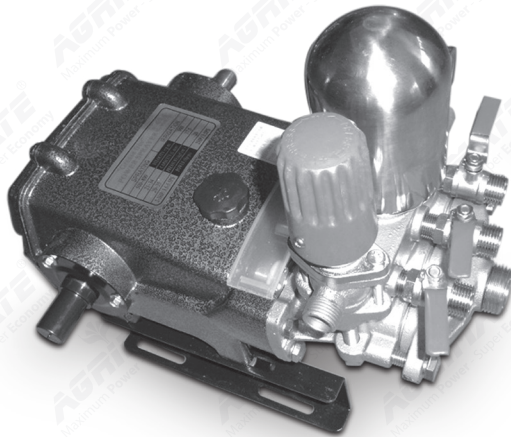


User Manual

AM LS 534 POWER SPRAYER



DISCLAIMER: DUE TO CONSTANT UPGRADATION, FEATURES AND SPECIFICATIONS ARE SUBJECT TO CHANGE WITHOUT NOTICE



BEFORE OPERATING THIS MACHINE,
PLEASE READ THESE INSTRUCTIONS CAREFULLY

INTRODUCTION

Please peruse the contents in the instruction manual prior to use this machine, correctly carried out installation and debugging, as well as used it strictly cording to the working specification in the instruction manual. The user should be familiar with the safety notices, machine performance, and maintenance, etc. The instruction manual will be used in the later use, repair, accessories replacement, and accessories procurement, so please keep it carefully

OPERATING INSTRUCTION

- 1 Securely mount the machine on the frame, ensured the two belt pulleys be parallel and on the same plane, and the tension of belt be moderate;
- 2 Add 30~40# machine oil up to 1/2 of oil gauge plug;
- 3 The connectors of each rubber pipe and high pressure pipe must be locked tightly ;
- 4 Before start the motor, open the jet gun and ball cock, and loosen the adjusting screw;
- 5 Start the motor, keeping it at appropriate velocity; Waiting there is water ejecting from the jet gun , close the jet gun or ball cock, and adjust the adjusting screw to let the pressure reach the working pressure;
- 6 Turn on the ball cock and jet gun, beginning spraying. During the process may properly adjust the adjusting screw to maintain the required pressure, and lock tightly the fly nut at any moment;
- 7 After spraying , operate the sprayer with clean water for 2~3 minutes to clean the residual interior chemicals;
- 8 Firstly dismantle the suction hose, waiting there is no water flowing out from the jet gun or the overflow hose, stop the machine and dismantle over flow hose, high pressure pipe, and loosen the adjusting screw.

We reserve the right for revision without further notice !

TECHNICAL PARAMETERS

Model	AM LS 534
Name	Power Sprayer
Velocity	500 ~ 800 RPM
Capacity	21 ~ 34 L/Min
Pressure	20 ~ 35 Kgf/cm ²
Power	1.5 ~ 3 HP 3 ~ 5PS
Dia.	30m/m
Stroke	20m/m
oil	30~40# machine oil

TROUBLE ANALYSIS

Trouble	Cause	Solution
Can't supply water Unstable pressure	Strainer Assy blocked	Clean Strainer Assy
	Suction Hose leaked	Lock tightly Wing Net or replace Packing
	Redundant air inside pump	Exhaust redundant air inside pump
	Valve damaged or blocked	Eliminate impurities or replace Valve Seal
Cylinder leaked	Grand too loose	Lock tightly Grand (After machine stopped)
	V-packing damaged	Replace V-packing
Pressure shortage	Improper pressure adjustment	Adjust adjusting screw to proper pressure
	Belt too loose	Adjust belt to moderate tension
	High pressure pipe leaked	Check, repair, or replace high pressure pipe
	Valve or valve seat damaged	Replace valve or valve seat
Leaked oil	Oil seal damaged, unlocked tightly	Lock tightly or replace relevant oil seal
Temperature too high	No lubricating oil or too dirty	Add grease on time, replace clean lubricating oil
	Pressure or velocity too high	Adjust to proper pressure or velocity

We reserve the right for revision without further notice !

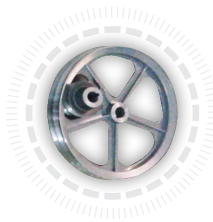
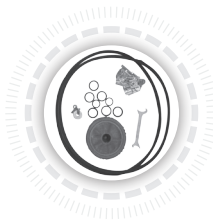
MAINTENANCE AND SERVICE

1. Replace the oil after begin use for 40 hours, and thence replace it one time using each 70 hours;
2. Add grease one time each two hours during using;
3. After each work finished, operate it with clean water for 2~3 minutes to eliminate the residual chemical and keep each parts clean;
4. For long term placement, wipe clean the spraying machine and place it at the cool and dry place.

SAFETY NOTICES

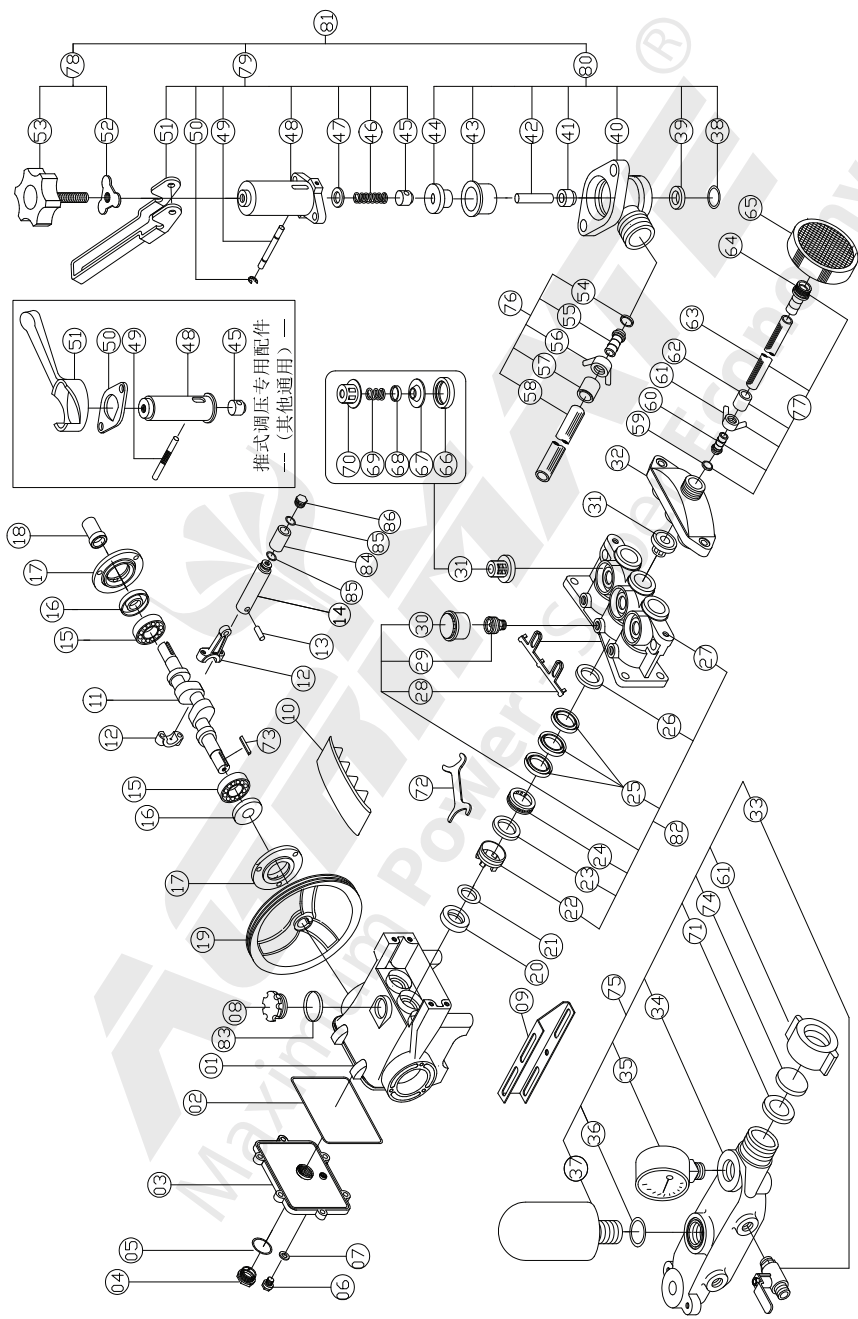
1. Using this machine with extra high pressure is prohibited (Should $\leq 35\text{kgf/cm}^2$)
2. The belt pulley should have safety protective device;
3. Should wear such protective tools as breathing mask in spraying, and spraying toward personnel and working at the downwind position are prohibited;
4. Running without water or lubricating oil is prohibited;
5. Using such special working solutions as strong acid, strong alkali, etc. is prohibited, and should operate strictly according to the safety prompts of manufacturing plant in spraying.

ACCESSORIES



Content			
Suction Hose 5mtr	Oil Seal	Special Spanner	V Pully
Overflow Hose 5mtr	'O' Ring	Suction Strainer	
Belt	Pump Fitting Fastners	User Manual	

SPARE PARTS DIAGRAM OF AM LS 534 POWER SPRAYER



SPARE PARTS OF AM LS 534 POWER SPRAYER

SL.NO.	PART NO.	PARTS NAME
1	524-534-001	Crank Case
2	524-534-002	Ring CrankCase
3	524-534-003	Cover CrankCase
4	22-004	Oil Gauge Plug
5	HS-002824	O-Ring28x2.4
6	22-006	Oil Plug
7	22-007	Ring 16x11
8	22-010	Oil Plug
9	524-534-012	Bed CrankCase
10	522-30-009	Plunger Cover
11	22-45-020	Crank Shaft
12	22-30-021	Connecting Rod
13	22-30-022	Plunger Pin
14	524-534-023A	Plunger
15	22-30-024	Bearing
16	22-30-025	Oil Seal,Crank Shaft
17	22-026	Cover,Oil Seal
18	22-027	Cover,Shaft
19	22-30-028	Pully
20	22-30-030	Oil Seal,Plunger
21	22-30-031	Seal,Stopping Water
22	524-534-032	Grand
23	HS-002815	O-Ring28x1.5

SPARE PARTS OF AM LS 534 POWER SPRAYER

SL.NO.	PART NO.	PARTS NAME
23	HS-003825	O-Ring38x2.5
24	524-534-034	Grease Ring
25	524-534-035	V-Packing
26	22-30-036	V-Packing Seat
27	22-30-037	Cylinder
28	22-30-046	Packing Stable Plate
29	22-038	Grease Cup(seat)
30	22-039	Grease Cup(head)
31	22-30-3001	Valve Assy
32	22-30-045	Suction Metal
33	22-051	Ball Cock
34	22-30-050	Discharge Metal
35	22-30-054	Pressure Gauge
36	HS-00282	O-Ring 28x2
37	22-30-053	Air Chamber
38	HS-00262	O-Ring 26x2
39	22-060	Valve Seat
40	22-064	Body Overflow
41	22-061	Valve
42	22-055	Valve Bar
43	22-058	Water Seal Cup
44	22-062	Box Water Seal
45	22-067	Under Metal
45	22-067B	Under Metal

SPARE PARTS OF AM LS 534 POWER SPRAYER

SL.NO.	PART NO.	PARTS NAME
46	22-069	Spring
47	22-070	Upper Metal
48	22-065	Spring Box
48	22-065B	Spring Box
49	22-068	Pin
49	22-068B	Pin
50	22-073	Fastener
50	22-073B	Spring-Box Stator
51	22-066	Lever
51	22-066B	Lever
52	22-071	Fly Nut
53	22-072	Adjusting Screw
54	22-080	Packing 17x13
55	22-081	Core Coupling
56	22-082	Wing Net
57	22-084	Brass Cup
58	22-083	Overflow Hose
59	22-30-090	Packing
60	22-30-091	Core Coupling
61	22-30-092	Wing Net
62	22-30-094	Brass Cup
63	22-30-093	Suction Hose
64	22-30-095	Core Strainer
65	22-096	Strainer Assy

SPARE PARTS OF AM LS 534 POWER SPRAYER

SL.NO.	PART NO.	PARTS NAME
66	22-30-040	Valve Seal
67	22-30-041	Valve Seat
68	22-30-042	Stopper
69	22-30-043	Valve Spring
70	22-30-044	Spring Box
71	622-30-073	Ring
72	22-057	Adjusting Belt
73	HS-005525	Key
74	622-30-074	Washer
75	22-2203/30-3003	Discharge Metal Assy
76	22-2204	Overflow Hose Assy
77	22-2206/30-3006	Suction Hose Assy
78	22-2205	Adjusting Screw Assy
79	22-2207	Spring Box Assy
80	22-2208	Body Overflow Assy
81	22-2209	Adjusting Assy
82	524-2402/534-3402	Cylinder Assy
83	HS-00262	O-Ring 26x2
84	524-534-023B	Ceramic Plunger
85	HS-001352	O-Ring 13.5x2
85	HS-002024	O-Ring 20x2.4
86	524-534-023C	Screw

INSPECTION & MAINTENANCE

For safety use, make sure the machine is cleaned every three-months. Before working, make sure to inspect the filter and the nozzle, and ensure there is no impurity. After working, make sure there is no water in the pump and the hose.

If the machine needs to be repaired in the guarantee period, please return the machine to the shop. You need to provide the certificate of purchase in order to repair or get the substitute.

Before Packing, the machine should be cleaned, then use closed packaging, packaging should be firm. Store the machine in dry place.

For transportation safety. The machine should comply with ISTA.



Meaning of crossed - out wheeled dustbin:

Do not dispose of electrical machines as unsorted municipal waste, use separate collection facilities.

If electrical machines are disposed of in landfills or dumps, hazardous substances can leak into the groundwater and get into the food chain, damaging your health and well-being.

When replacing old machines with new ones, the retailer is legally obligated to take back your old machine for disposals at least free of charge.

Warranty Card

CUSTOMER COPY



Date _____

Purchaser's Name & Address

Product Name

AM LS 534 POWER SPRAYER

Product Serial No.

Invoice / DN No.

Date of Delivery

Dealer's Office Seal

Dealer Sign _____

Customer Sign. _____

I/We accept the terms and conditions of Warranty as in the Warranty Card.

Warranty Card

DEALER'S COPY



Date _____

Purchaser's Name & Address

Product Name

AM LS 534 POWER SPRAYER

Product Serial No.

Invoice / DN No.

Date of Delivery

Dealer's Office Seal

Dealer Sign _____

Customer Sign. _____

I/We accept the terms and conditions of Warranty as in the Warranty Card.

Warranty Card

COMPANY COPY



Date _____

Purchaser's Name & Address

Product Name

AM LS 534 POWER SPRAYER

Product Serial No.

Invoice / DN No.

Date of Delivery

Dealer's Office Seal

Dealer Sign _____

Customer Sign. _____

I/We accept the terms and conditions of Warranty as in the Warranty Card.

1. **LIMITED WARRANTY PERIOD** : For a period of six months from the date of Sale / delivery of the product which ever is earlier. 2. **LIMITED WARRANTY OBLIGATION** : Replacement of defective part(s) by authorized dealer are free of charges. If found defective by reasons of defective material / poor workmanship, parts will be replaced and there will be no value re-imbusement. 3. **TERMS & CONDITIONS** : a. Claims under warranty will be accepted on submission of Warranty Card duly filled and stamped by authorized dealer together with the original purchase document. : b. Shipping / transportation / Incidental charges incurred in replacing defective parts under warranty shall be borne by the purchaser.

WARRANTY null & void if

- (i) Lack of maintenance, (ii) Incorrect use of the machine or tampering, (iii) Use of non-genuine spare parts, (iv) Usage of acids, solvents, or any flammable materials, (v) Non-usage of filter water / clear water / soft water & using water above 40°C temperature, (vi) While using the pressure washers to draw water which is contaminated with dust & solvents (eg. paint thinners, gasoline, oil, etc.), (vii) Repair done by unauthorized service people, (viii) Those parts subject to wear & tear due to normal operations and plastic parts, rubber items etc, (ix) Loose connections, faulty electrical fixtures & fluctuations in power supply.
4. Should any failure occur during or after the warranty period, customer does not have the right to interrupt payment / price discount.
5. Incidental or consequential damages like inconvenience commercial loss, loss of tie, mental agony etc.
6. Loss of any nature due to operation or non-operation is not covered under warranty.
7. All free service are at Dealer's service point only.
8. Warranty ceases if service is not done periodically.
9. The attached card should be completed and returned to Ratnagiri Impex Pvt. Ltd. for registration immediately after sale / delivery.
10. The warranty is void unless you register the warranty card with Ratnagiri Impex Pvt. Ltd.
11. The decision of Ratnagiri Impex Pvt. Ltd., in settling the warranty is final in all respects.
12. All disputes are subject to Bangalore Courts Jurisdiction

1. **LIMITED WARRANTY PERIOD** : For a period of six months from the date of Sale / delivery of the product which ever is earlier. 2. **LIMITED WARRANTY OBLIGATION** : Replacement of defective part(s) by authorized dealer are free of charges. If found defective by reasons of defective material / poor workmanship, parts will be replaced and there will be no value re-imbusement. 3. **TERMS & CONDITIONS** : a. Claims under warranty will be accepted on submission of Warranty Card duly filled and stamped by authorized dealer together with the original purchase document. : b. Shipping / transportation / Incidental charges incurred in replacing defective parts under warranty shall be borne by the purchaser.

WARRANTY null & void if

- (i) Lack of maintenance, (ii) Incorrect use of the machine or tampering, (iii) Use of non-genuine spare parts, (iv) Usage of acids, solvents, or any flammable materials, (v) Non-usage of filter water / clear water / soft water & using water above 40°C temperature, (vi) While using the pressure washers to draw water which is contaminated with dust & solvents (eg. paint thinners, gasoline, oil, etc.), (vii) Repair done by unauthorized service people, (viii) Those parts subject to wear & tear due to normal operations and plastic parts, rubber items etc, (ix) Loose connections, faulty electrical fixtures & fluctuations in power supply.
4. Should any failure occur during or after the warranty period, customer does not have the right to interrupt payment / price discount.
5. Incidental or consequential damages like inconvenience commercial loss, loss of tie, mental agony etc.
6. Loss of any nature due to operation or non-operation is not covered under warranty.
7. All free service are at Dealer's service point only.
8. Warranty ceases if service is not done periodically.
9. The attached card should be completed and returned to Ratnagiri Impex Pvt. Ltd. for registration immediately after sale / delivery.
10. The warranty is void unless you register the warranty card with Ratnagiri Impex Pvt. Ltd.
11. The decision of Ratnagiri Impex Pvt. Ltd., in settling the warranty is final in all respects.
12. All disputes are subject to Bangalore Courts Jurisdiction

1. **LIMITED WARRANTY PERIOD** : For a period of six months from the date of Sale / delivery of the product which ever is earlier. 2. **LIMITED WARRANTY OBLIGATION** : Replacement of defective part(s) by authorized dealer are free of charges. If found defective by reasons of defective material / poor workmanship, parts will be replaced and there will be no value re-imbusement. 3. **TERMS & CONDITIONS** : a. Claims under warranty will be accepted on submission of Warranty Card duly filled and stamped by authorized dealer together with the original purchase document. : b. Shipping / transportation / Incidental charges incurred in replacing defective parts under warranty shall be borne by the purchaser.

WARRANTY null & void if

- (i) Lack of maintenance, (ii) Incorrect use of the machine or tampering, (iii) Use of non-genuine spare parts, (iv) Usage of acids, solvents, or any flammable materials, (v) Non-usage of filter water / clear water / soft water & using water above 40°C temperature, (vi) While using the pressure washers to draw water which is contaminated with dust & solvents (eg. paint thinners, gasoline, oil, etc.), (vii) Repair done by unauthorized service people, (viii) Those parts subject to wear & tear due to normal operations and plastic parts, rubber items etc, (ix) Loose connections, faulty electrical fixtures & fluctuations in power supply.
4. Should any failure occur during or after the warranty period, customer does not have the right to interrupt payment / price discount.
5. Incidental or consequential damages like inconvenience commercial loss, loss of tie, mental agony etc.
6. Loss of any nature due to operation or non-operation is not covered under warranty.
7. All free service are at Dealer's service point only.
8. Warranty ceases if service is not done periodically.
9. The attached card should be completed and returned to Ratnagiri Impex Pvt. Ltd. for registration immediately after sale / delivery.
10. The warranty is void unless you register the warranty card with Ratnagiri Impex Pvt. Ltd.
11. The decision of Ratnagiri Impex Pvt. Ltd., in settling the warranty is final in all respects.
12. All disputes are subject to Bangalore Courts Jurisdiction



1st Free Service Coupon

ISO 9001-2008
CERTIFIED COMPANY

FREE SERVICE COUPON (30 Days / 20 hrs (Which ever is earlier))

Model AM LS 534 POWER SPRAYER	Serial Number
---	---------------

PDI Date	Service No.	Purchase bill no.	Date
----------	-------------	-------------------	------

Dealer's Office Seal

- Operations:
- Check and Test the Fuel Mixture.
 - Check and Clean the Air Filter
 - Check, Clean and Adjust the Spark plug
 - Check and Adjust the Carburetor Tuning
 - Check and Sharpen the cutting Tools
 - Start and Check the Noise, Vibration, Loosen / Fasteners etc.
 - Product familiarization on Usage
 - Routine maintenance and Storage

Dealer Signature.....

Customer Signature.....

Conditions: Operations listed have been performed to my entire satisfaction without any labour charges. Only consumables were charged.

agriculture | horticulture | sericulture | plantations | forestry | garden | health care

WARRANTY AND FREE SERVICE COUPON



2nd Free Service Coupon

ISO 9001-2008
CERTIFIED COMPANY

FREE SERVICE COUPON 60 Days/100 hrs (Which ever is earlier)

Model AM LS 534 POWER SPRAYER	Serial Number
---	---------------

PDI Date	Service No.	Purchase bill no.	Date
----------	-------------	-------------------	------

Dealer's Office Seal

- Operations:
- Check and Test the Fuel Mixture.
 - Check and Clean the Air Filter
 - Check, Clean and Adjust the Spark plug
 - Check and Adjust the Carburetor Tuning
 - Check and Sharpen the cutting Tools
 - Start and Check the Noise, Vibration, Loosen / Fasteners etc.
 - Product familiarization on Usage
 - Routine maintenance and Storage

Dealer Signature.....

Customer Signature.....

Conditions: Operations listed have been performed to my entire satisfaction without any labour charges. Only consumables were charged.

agriculture | horticulture | sericulture | plantations | forestry | garden | health care

WARRANTY AND FREE SERVICE COUPON



3rd Free Service Coupon

ISO 9001-2008
CERTIFIED COMPANY

FREE SERVICE COUPON 90 Days/200 hrs (Which ever is earlier)

Model AM LS 534 POWER SPRAYER	Serial Number
---	---------------

PDI Date	Service No.	Purchase bill no.	Date
----------	-------------	-------------------	------

Dealer's Office Seal

- Operations:
- Check and Test the Fuel Mixture.
 - Check and Clean the Air Filter
 - Check, Clean and Adjust the Spark plug
 - Check and Adjust the Carburetor Tuning
 - Check and Sharpen the cutting Tools
 - Start and Check the Noise, Vibration, Loosen / Fasteners etc.
 - Product familiarization on Usage
 - Routine maintenance and Storage

Dealer Signature.....

Customer Signature.....

Conditions: Operations listed have been performed to my entire satisfaction without any labour charges. Only consumables were charged.

agriculture | horticulture | sericulture | plantations | forestry | garden | health care

WARRANTY AND FREE SERVICE COUPON



Small Maintenance. Big Savings.



Small Maintenance. Big Savings.



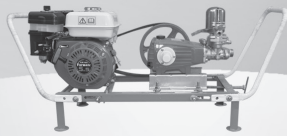
Small Maintenance. Big Savings.

Do's & Don'ts

- Always read the instruction manual supplied along with the equipments and understand the correct installation and operating procedures before attempting to use the equipments.
- It is important to use the personal protection equipments such as head helmet with visor, ear defenders, goggles, safety gloves, cut resistant shoes, trousers and jackets while operating potentially dangerous machines.
- Avoid untrained persons using the equipments. Children must not be allowed to handle these equipments.
- Always use genuine spares and accessories in repairs and usage to derive maximum life of the equipments.
- Always keep the equipments in good working condition to minimize loss of output as well as to reduce the pollution and save the environment.
- Do not use the machine within range of persons unless they wear protective clothing.
- Do not operate the machine when fatigued or under the influence of alcohol or drugs.
- When the machine is running, please maintain a constant water supply. Without water circulation will damage the sealing rings of the machine.
- For more query kindly contact for our Service Center/Dealer/ franchise

Agrimate Army For Pest Control

ANY WHERE - ANY TIME - ANY CROP




AGRIMATE[®]
Maximum Power - Super Economy

RATNAGIRI IMPEX PVT., LTD.,
Annapurna House, #1 / 1G, 7th Cross, New Guddadahalli
Mysore Road, Bangalore - 560 026
Customer Care: 1800-425-3036
Email: marketing@ratnagiriimpex.com



Marketed by:
 **ratnagiri**
impex
BRINGING YOU THE FUTURE... NOW

www.ratnagiriimpex.com

AN ISO 9001:2008 CERTIFIED COMPANY