

# AM-CL-22T POWER SPRAYER



DISCLAIMER: DUE TO CONSTANT UPGRADATION, FEATURES AND SPECIFICATIONS ARE SUBJECT TO CHANGE WITHOUT NOTICE



BEFORE OPERATING THIS MACHINE,  
PLEASE READ THESE INSTRUCTIONS CAREFULLY



Good Products – Great Values

**Dear Sir/Madam,**

Thank you for choosing Agrimate product. You are the proud owner of high technology and durable machine. Trust that our franchisee/dealer installed the product and explained you about the usage and service instructions. Please visit our authorised dealer for your future requirement of our other equipments, genuine spares, accessories and service. Service coupons are attached with this manual and you can avail free service to keep your machine fit always to use on demand.

### **About Ratnagiri**

We import and market of high quality of agriculture wide range of equipment's Which we are selling through our authorized franchisee or dealer network. We are in this field from past 20 years serving the former community. For further details, you may please visit our website [www.agrimart.in](http://www.agrimart.in), Tool Free No: 1800-425-3036.

#### Range of Brands



#### Our Retail Formats



Agriculture | Horticulture | Sericulture | Plantations | Forestry | Garden | Health care

## TECHNICAL PARAMETERS

Model	AM- CL22T
Name	Power Sprayer
OUTPUT	21-37.5L/MIN
PRESSURE	2-3.5MPA
RPM	500-900RPM
POWER	2.2-4KW

## TROUBLE ANALYSIS

Trouble	Cause	Solution
Can't supply water Unstable pressure	Strainer Assy blocked	Clean Strainer Assy
	Suction Hose leaked	Lock tightly Wing Net or replace Packing
	Redundant air inside pump	Exhaust redundant air inside pump
	Valve damaged or blocked	Eliminate impurities or replace Valve Seal
Cylinder leaked	Grand too loose	Lock tightly Grand (After machine stopped)
	V-packing damaged	Replace V-packing
Pressure shortage	Improper pressure adjustment	Adjust adjusting screw to proper pressure
	Belt too loose	Adjust belt to moderate tension
	High pressure pipe leaked	Check, repair, or replace high pressure pipe
	Valve or valve seat damaged	Replace valve or valve seat
Leaked oil	Oil seal damaged, unlocked tightly	Lock tightly or replace relevant oil seal
Temperature too high	No lubricating oil or too dirty	Add grease on time, replace clean lubricating oil
	Pressure or velocity too high	Adjust to proper pressure or velocity

**We reserve the right for revision without further notice !**

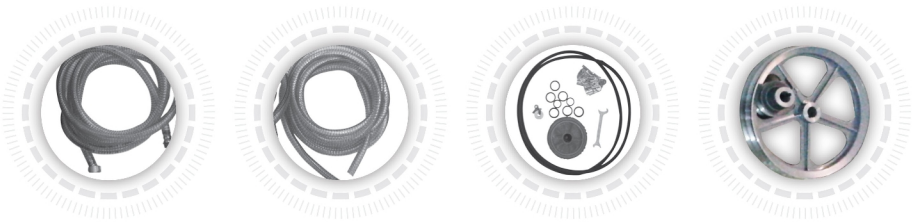
## MAINTENANCE AND SERVICE

1. Replace the oil after begin use for 40 hours, and thence replace it one time using each 70 hours;
2. Add grease one time each two hours during using;
3. After each work finished, operate it with clean water for 2 ~ 3 minutes to eliminate the residual chemical and keep each parts clean;
4. For long term placement, wipe clean the spraying machine and place it at the cool and dry place.

## SAFETY NOTICES

1. Using this machine with extra high pressure is prohibited (Should  $\leq 35\text{kgf/cm}^2$ )
2. The belt pulley should have safety protective device;
3. Should wear such protective tools as breathing mask in spraying, and spraying toward personnel and working at the downwind position are prohibited;
4. Running without water or lubricating oil is prohibited;
5. Using such special working solutions as strong acid, strong alkali, etc. is prohibited, and should operate strictly according to the safety prompts of manufacturing plant in spraying.

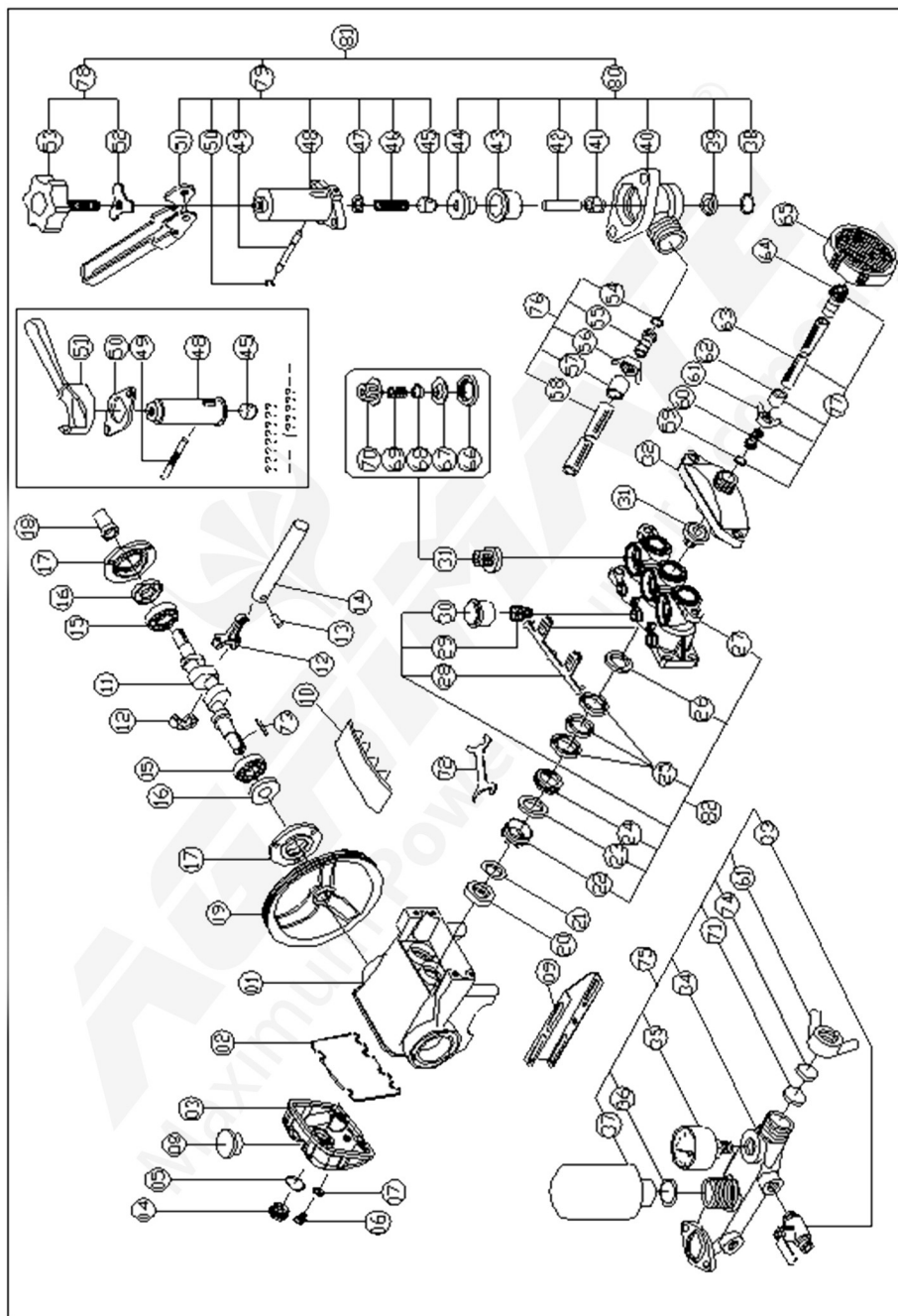
## ACCESSORIES



Content			
Suction Hose 5mtr	Oil Seal	Special Spanner	V Pully
Overflow Hose 5mtr	'O' Ring	Suction Strainer	
Belt	Pump Fitting Fastners	User Manual	



# SPARE PARTS DAIGRAM OF AM-CL-22T POWER SPRAYER



## SPARE PARTS OF AM-CL-22T POWER SPRAYER

Sl No.	Part No.	Description
1	AM-CL-22T-01	Crank Case
2	AM-CL-22T-02	Ring CrankCase
3	AM-CL-22T-03	Cover CrankCase
4	AM-CL-22T-04	Oil Gauge Plug
5	AM-CL-22T-05	O-Ring
6	AM-CL-22T-06	Oil Plug
7	AM-CL-22T-07	Ring
8	AM-CL-22T-08	Oil Plug
9	AM-CL-22T-09	Bed CrankCase
10	AM-CL-22T-10	Plunger Cover
11	AM-CL-22T-11	Crank Shaft
12	AM-CL-22T-12	Connecting Rod
13	AM-CL-22T-13	Plunger Pin
14	AM-CL-22T-14	Plunger
15	AM-CL-22T-15	Bearing
16	AM-CL-22T-16	Oil Seal,Crank Shaft
17	AM-CL-22T-17	Cover,Oil Seal
18	AM-CL-22T-18	Cover,Shaft
19	AM-CL-22T-19	Pully
20	AM-CL-22T-20	Oil Seal,Plunger
21	AM-CL-22T-21	Seal,Stopping Water
22	AM-CL-22T-22	Grand
23	AM-CL-22T-23	O-Ring
24	AM-CL-22T-24	Grease Ring

## SPARE PARTS OF AM-CL22T POWER SPRAYER

Sl No.	Part No.	Description
25	AM-CL-22T-25	V-Packing
26	AM-CL-22T-26	V-Packing Seat
27	AM-CL-22T-27	Cylinder
28	AM-CL-22T-28	Packing Stable Plate
29	AM-CL-22T-29	Grease Cup(seat)
30	AM-CL-22T-30	Grease Cup(head)
31	AM-CL-22T-31	Valve Assy
32	AM-CL-22T-32	Suction Metal
33	AM-CL-22T-33	Ball Cock
34	AM-CL-22T-34	Discharge Metal
35	AM-CL-22T-35	Pressure Gauge
36	AM-CL-22T-36	O-Ring
37	AM-CL-22T-37	Air Chamber
38	AM-CL-22T-38	O-Ring
39	AM-CL-22T-39	Valve Seat
40	AM-CL-22T-40	Body Overflow
41	AM-CL-22T-41	Valve
42	AM-CL-22T-42	Valve Bar
43	AM-CL-22T-43	Water Seal Cup
44	AM-CL-22T-44	Box WaterSeal
45	AM-CL-22T-45	Under Metal
45	AM-CL-22T-45	Under Metal
46	AM-CL-22T-46	Spring
47	AM-CL-22T-47	Upper Metal
48	AM-CL-22T-48	Spring Box

## SPARE PARTS OF AM-CL22T POWER SPRAYER

Sl No.	Part No.	Description
48	AM-CL-22T-48	Spring Box
49	AM-CL-22T-49	Pin
49	AM-CL-22T-49	Pin
50	AM-CL-22T-50	Fastener
50	AM-CL-22T-50	Spring-Box Stator
51	AM-CL-22T-51	Lever
51	AM-CL-22T-51	Lever
52	AM-CL-22T-52	Fly Nut
53	AM-CL-22T-53	Adjusting Screw
54	AM-CL-22T-54	Packing
55	AM-CL-22T-55	Core Coupling
56	AM-CL-22T-56	Wing Net
57	AM-CL-22T-57	Brass Cup
58	AM-CL-22T-58	Overflow Hose
59	AM-CL-22T-59	Packing
60	AM-CL-22T-60	Core Coupling
61	AM-CL-22T-61	Wing Net
62	AM-CL-22T-62	Brass Cup
63	AM-CL-22T-63	Suction Hose
64	AM-CL-22T-64	Core Strainer
65	AM-CL-22T-65	Strainer Assy
66	AM-CL-22T-66	Valve Seal
67	AM-CL-22T-67	Valve Seat
68	AM-CL-22T-68	Stopper
69	AM-CL-22T-69	Valve Spring

## SPARE PARTS OF AM-CL22T POWER SPRAYER

SI No.	Part No.	Description
70	AM-CL-22T-70	Spring Box
71	AM-CL-22T-71	Ring
72	AM-CL-22T-72	Adjusting Belt
73	AM-CL-22T-73	Key
74	AM-CL-22T-74	Washer
75	AM-CL-22T-75	Discharge Metal Assy
76	AM-CL-22T-76	Overflow Hose Assy
77	AM-CL-22T-77	Suction Hose Assy
78	AM-CL-22T-78	Adjusting Screw Assy
79	AM-CL-22T-79	Spring Box Assy
80	AM-CL-22T-80	Body Overflow Assy
81	AM-CL-22T-81	Adjusting Assy
82	AM-CL-22T-82	Cylinder Assy



## INSPECTION & MAINTENANCE

For safety use, make sure the machine is cleaned every three-months. Before working, make sure to inspect the filter and the nozzle, and ensure there is no impurity. After working, make sure there is no water in the pump and the hose.

If the machine needs to be repaired in the guarantee period, please return the machine to the shop. You need to provide the certificate of purchase in order to repair or get the substitute.

Before Packing, the machine should be cleaned, then use closed packaging, packaging should be firm. Store the machine in dry place.

For transportation safety. The machine should comply with ISTA.



Meaning of crossed - out wheeled dustbin:

Do not dispose of electrical machines as unsorted municipal waste, use separate collection facilities.

If electrical machines are disposed of in landfills or dumps, hazardous substances can leak into the groundwater and get into the food chain, damaging your health and well-being.

When replacing old machines with new ones, the retailer is legally obligated to take back your old machine for disposals at least free of charge.

## Warranty Card

CUSTOMER COPY



Date \_\_\_\_\_

Purchaser's Name & Address

\_\_\_\_\_  
\_\_\_\_\_  
\_\_\_\_\_

Product Name

**AM - CL22T POWER SPRAYER**

Product Serial No.

\_\_\_\_\_

Invoice / DN No.

\_\_\_\_\_

Date of Delivery

\_\_\_\_\_

Dealer's Office Seal

\_\_\_\_\_

Dealer Sign \_\_\_\_\_

Customer Sign. \_\_\_\_\_

I/We accept the terms and conditions of Warranty as in the Warranty Card.

## Warranty Card

DEALER'S COPY



Date \_\_\_\_\_

Purchaser's Name & Address

\_\_\_\_\_  
\_\_\_\_\_  
\_\_\_\_\_

Product Name

**AM - CL22T POWER SPRAYER**

Product Serial No.

\_\_\_\_\_

Invoice / DN No.

\_\_\_\_\_

Date of Delivery

\_\_\_\_\_

Dealer's Office Seal

\_\_\_\_\_

Dealer Sign \_\_\_\_\_

Customer Sign. \_\_\_\_\_

I/We accept the terms and conditions of Warranty as in the Warranty Card.

## Warranty Card

COMPANY COPY



Date \_\_\_\_\_

Purchaser's Name & Address

\_\_\_\_\_  
\_\_\_\_\_  
\_\_\_\_\_

Product Name

**AM - CL22T POWER SPRAYER**

Product Serial No.

\_\_\_\_\_

Invoice / DN No.

\_\_\_\_\_

Date of Delivery

\_\_\_\_\_

Dealer's Office Seal

\_\_\_\_\_

Dealer Sign \_\_\_\_\_

Customer Sign. \_\_\_\_\_

I/We accept the terms and conditions of Warranty as in the Warranty Card.

1. **LIMITED WARRANTY PERIOD** : For a period of six months from the date of Sale / delivery of the product which ever is earlier. 2. **LIMITED WARRANTY OBLIGATION** : Replacement of defective part(s) by authorized dealer are free of charges. If found defective by reasons of defective material / poor workmanship, parts will be replaced and there will be no value re-imbusement. 3. **TERMS & CONDITIONS** : a. Claims under warranty will be accepted on submission of Warranty Card duly filled and stamped by authorized dealer together with the original purchase document. : b. Shipping / transportation / Incidental charges incurred in replacing defective parts under warranty shall be borne by the purchaser.

**WARRANTY null & void if**

- (i) Lack of maintenance, (ii) Incorrect use of the machine or tampering, (iii) Use of non-genuine spare parts, (iv) Usage of acids, solvents, or any flammable materials, (v) Non-usage of filter water / clear water / soft water & using water above 40°C temperature, (vi) While using the pressure washers to draw water which is contaminated with dust & solvents (eg. paint thinners, gasoline, oil, etc.), (vii) Repair done by unauthorized service people, (viii) Those parts subject to wear & tear due to normal operations and plastic parts, rubber items etc, (ix) Loose connections, faulty electrical fixtures & fluctuations in power supply.
4. Should any failure occur during or after the warranty period, customer does not have the right to interrupt payment / price discount.
  5. Incidental or consequential damages like inconvenience commercial loss, loss of tie, mental agony etc.
  6. Loss of any nature due to operation or non-operation is not covered under warranty.
  7. All free service are at Dealer's service point only.
  8. Warranty ceases if service is not done periodically.
  9. The attached card should be completed and returned to Ratnagiri Impex Pvt. Ltd. for registration immediately after sale / delivery.
  10. The warranty is void unless you register the warranty card with Ratnagiri Impex Pvt. Ltd.
  11. The decision of Ratnagiri Impex Pvt. Ltd., in settling the warranty is final in all respects.
  12. All disputes are subject to Bangalore Courts Jurisdiction

1. **LIMITED WARRANTY PERIOD** : For a period of six months from the date of Sale / delivery of the product which ever is earlier. 2. **LIMITED WARRANTY OBLIGATION** : Replacement of defective part(s) by authorized dealer are free of charges. If found defective by reasons of defective material / poor workmanship, parts will be replaced and there will be no value re-imbusement. 3. **TERMS & CONDITIONS** : a. Claims under warranty will be accepted on submission of Warranty Card duly filled and stamped by authorized dealer together with the original purchase document. : b. Shipping / transportation / Incidental charges incurred in replacing defective parts under warranty shall be borne by the purchaser.

**WARRANTY null & void if**

- (i) Lack of maintenance, (ii) Incorrect use of the machine or tampering, (iii) Use of non-genuine spare parts, (iv) Usage of acids, solvents, or any flammable materials, (v) Non-usage of filter water / clear water / soft water & using water above 40°C temperature, (vi) While using the pressure washers to draw water which is contaminated with dust & solvents (eg. paint thinners, gasoline, oil, etc.), (vii) Repair done by unauthorized service people, (viii) Those parts subject to wear & tear due to normal operations and plastic parts, rubber items etc, (ix) Loose connections, faulty electrical fixtures & fluctuations in power supply.
4. Should any failure occur during or after the warranty period, customer does not have the right to interrupt payment / price discount.
  5. Incidental or consequential damages like inconvenience commercial loss, loss of tie, mental agony etc.
  6. Loss of any nature due to operation or non-operation is not covered under warranty.
  7. All free service are at Dealer's service point only.
  8. Warranty ceases if service is not done periodically.
  9. The attached card should be completed and returned to Ratnagiri Impex Pvt. Ltd. for registration immediately after sale / delivery.
  10. The warranty is void unless you register the warranty card with Ratnagiri Impex Pvt. Ltd.
  11. The decision of Ratnagiri Impex Pvt. Ltd., in settling the warranty is final in all respects.
  12. All disputes are subject to Bangalore Courts Jurisdiction

1. **LIMITED WARRANTY PERIOD** : For a period of six months from the date of Sale / delivery of the product which ever is earlier. 2. **LIMITED WARRANTY OBLIGATION** : Replacement of defective part(s) by authorized dealer are free of charges. If found defective by reasons of defective material / poor workmanship, parts will be replaced and there will be no value re-imbusement. 3. **TERMS & CONDITIONS** : a. Claims under warranty will be accepted on submission of Warranty Card duly filled and stamped by authorized dealer together with the original purchase document. : b. Shipping / transportation / Incidental charges incurred in replacing defective parts under warranty shall be borne by the purchaser.

**WARRANTY null & void if**

- (i) Lack of maintenance, (ii) Incorrect use of the machine or tampering, (iii) Use of non-genuine spare parts, (iv) Usage of acids, solvents, or any flammable materials, (v) Non-usage of filter water / clear water / soft water & using water above 40°C temperature, (vi) While using the pressure washers to draw water which is contaminated with dust & solvents (eg. paint thinners, gasoline, oil, etc.), (vii) Repair done by unauthorized service people, (viii) Those parts subject to wear & tear due to normal operations and plastic parts, rubber items etc, (ix) Loose connections, faulty electrical fixtures & fluctuations in power supply.
4. Should any failure occur during or after the warranty period, customer does not have the right to interrupt payment / price discount.
  5. Incidental or consequential damages like inconvenience commercial loss, loss of tie, mental agony etc.
  6. Loss of any nature due to operation or non-operation is not covered under warranty.
  7. All free service are at Dealer's service point only.
  8. Warranty ceases if service is not done periodically.
  9. The attached card should be completed and returned to Ratnagiri Impex Pvt. Ltd. for registration immediately after sale / delivery.
  10. The warranty is void unless you register the warranty card with Ratnagiri Impex Pvt. Ltd.
  11. The decision of Ratnagiri Impex Pvt. Ltd., in settling the warranty is final in all respects.
  12. All disputes are subject to Bangalore Courts Jurisdiction



### 1st Free Service Coupon

ISO 9001:2015  
CERTIFIED COMPANY

**FREE SERVICE COUPON (30 Days / 30 hrs (Which ever is earlier))**

Model **AM - CL22T POWER SPRAYER** Serial Number

PDI Date  Service No.  Purchase bill no.  Date

Dealer's Office Seal

- Operations:
- Check and Test the Fuel Mixture.
  - Check and Clean the Air Filter
  - Check, Clean and Adjust the Spark plug
  - Check and Adjust the Carburetor Tuning
  - Check and Sharpen the cutting Tools
  - Start and Check the Noise, Vibration, Loosen / Fasteners etc.
  - Product familiarization on Usage
  - Routine maintenance and Storage

Dealer Signature.....

Customer Signature.....

Conditions: Operations listed have been performed to my entire satisfaction without any labour charges. Only consumables were charged.

agriculture | horticulture | sericulture | plantations | forestry | garden | health care

WARRANTY AND FREE SERVICE COUPON



### 2nd Free Service Coupon

ISO 9001:2015  
CERTIFIED COMPANY

**FREE SERVICE COUPON 60 Days/ 60 hrs (Which ever is earlier)**

Model **AM - CL22T POWER SPRAYER** Serial Number

PDI Date  Service No.  Purchase bill no.  Date

Dealer's Office Seal

- Operations:
- Check and Test the Fuel Mixture.
  - Check and Clean the Air Filter
  - Check, Clean and Adjust the Spark plug
  - Check and Adjust the Carburetor Tuning
  - Check and Sharpen the cutting Tools
  - Start and Check the Noise, Vibration, Loosen / Fasteners etc.
  - Product familiarization on Usage
  - Routine maintenance and Storage

Dealer Signature.....

Customer Signature.....

Conditions: Operations listed have been performed to my entire satisfaction without any labour charges. Only consumables were charged.

agriculture | horticulture | sericulture | plantations | forestry | garden | health care

WARRANTY AND FREE SERVICE COUPON



### 3rd Free Service Coupon

ISO 9001:2015  
CERTIFIED COMPANY

**FREE SERVICE COUPON 90 Days/120 hrs (Which ever is earlier)**

Model **AM - CL22T POWER SPRAYER** Serial Number

PDI Date  Service No.  Purchase bill no.  Date

Dealer's Office Seal

- Operations:
- Check and Test the Fuel Mixture.
  - Check and Clean the Air Filter
  - Check, Clean and Adjust the Spark plug
  - Check and Adjust the Carburetor Tuning
  - Check and Sharpen the cutting Tools
  - Start and Check the Noise, Vibration, Loosen / Fasteners etc.
  - Product familiarization on Usage
  - Routine maintenance and Storage

Dealer Signature.....

Customer Signature.....

Conditions: Operations listed have been performed to my entire satisfaction without any labour charges. Only consumables were charged.

agriculture | horticulture | sericulture | plantations | forestry | garden | health care

WARRANTY AND FREE SERVICE COUPON



# AGRIMATE MEGA™

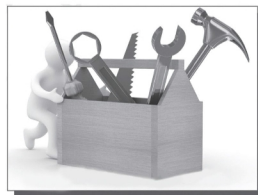
FARM EQUIPMENT | GREEN CARE | SERVICES





# Do's & Don'ts

- Always read the instruction manual supplied along with the equipments and understand the correct installation and operating procedures before attempting to use the equipments.
- It is important to use the personal protection equipments such as head helmet with visor, ear defenders, goggles, safety gloves, cut resistant shoes, trousers and jackets while operating potentially dangerous machines.
- Avoid untrained persons using the equipments. Children must not be allowed to handle these equipments.
- Always use genuine spares and accessories in repairs and usage to derive maximum life of the equipments.
- Always keep the equipments in good working condition to minimize loss of output as well as to reduce the pollution and save the environment.
- Do not use the machine within range of persons unless they wear protective clothing.
- Do not operate the machine when fatigued or under the influence of alcohol or drugs.
- For more query kindly contact for our Service Center/Dealer/ franchise



Small and Timely Maintenance - Big Savings

# MULTIPLY PROFITS

## WITH OUR MULTI CROP, MULTI PURPOSE EQUIPMENTS



Maximum Power - Super Economy  
**RANGE OF PRODUCTS**



BATTERY /  
MANUAL  
SPRAYER



PORTABLE  
POWER  
SPRAYER



KNAPSACK  
POWER  
SPRAYER



ROTARY  
TILLER



CHAFF  
CUTTER



TEA  
PRUNER



FOGGER



POWER  
WEEDER



CHAINSAW



ROTARY  
TILLER



LAWN  
MOWER



HIGH  
PRESSURE  
WASHER



EARTH  
AUGER



RIDE ON  
MOWER



our power, your passion  
**RANGE OF PRODUCTS**



Advanced Technology

Advanced Technology

**RANGE OF PRODUCTS**



BRUSH CUTTER  
- PUSH TYPE



BRUSH CUTTER -  
BACK PACK



BRUSH CUTTER -  
MULTI TOOL



POLE PRUNER



BLOWER  
BACK PACK



LAWN MOWER



BRUSH  
CUTTER



BACK PACK  
BC



TILLER



FOGGER



EARTH  
AUGER



Green Panther®

**RANGE OF PRODUCTS**

### OUR RETAIL FORMATS



FARM EQUIPMENT | GREEN CARE | SERVICES



FARM EQUIPMENT | GREEN CARE | SERVICES



FARM EQUIPMENT | GREEN CARE | SERVICES

IMPORTERS & MARKETING BY:

**Ratnagiri Impex Pvt. Ltd.**

Annapurna House, # 1/1G,

7th Cross New Guddadahalli,

Mysore Road Bangalore - 560 026, India

Ph: 080-26985100/1/2

Email: info@ratnagiriimpex.com



**TOLL FREE :**  
**1800-425-3036**

[www.ratnagiriimpex.com](http://www.ratnagiriimpex.com)

[www.agrimart.in](http://www.agrimart.in)



**ratnagiri impex**  
BRINGING YOU THE FUTURE... NOW

An ISO 9001:2015 Certified Company

agriculture | horticulture | sericulture | plantations | forestry | garden | health care