


# User Manual

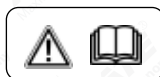
  
**AGRIMATE®**  
Maximum Power - Super Economy

AMH-P769   
with GX25 ☐  
with GX35 ☐

## Portable Motorised Sprayer



**DISCLAIMER:** DUE TO CONSTANT UPGRADATION, FEATURES AND SPECIFICATIONS ARE SUBJECT TO CHANGE WITHOUT NOTICE



**BEFORE OPERATING THIS MACHINE,  
PLEASE READ THESE INSTRUCTIONS CAREFULLY**

## CAUTION

1. Stop running the gasoline engine before the tank is refueled, and ensure that the gasoline engine is far from the fire. Against the position, discharge the exhaust gas from the rooms, channels using gasoline engine or any other closed places.
2. Forbid to touch the muffler and the body when the gasoline engine runs and just stops.
3. Don't touch the ignition plug cap and wires, to avoid the electrical shock
4. Forbid children and persons unconcerned to touch the gasoline engine.
5. Ensure the cooling of the muffler and the body, cover the gasoline engine after daily work.
6. Against the problem, the damage or the misfire of gasoline engine, check and maintain the gasoline regularly and clean the deposit carbon in the muffler and in the cylinder exhaust.
7. Forbid to use pure gasoline (without two-stroke engine oil) as fuel.
8. Against the damage of gasoline engine and the instruments, forbid to accelerate abruptly, to run speedily and stop abruptly.
9. Forbid the drunk, the dizzy and the pregnant to use the gasoline engine.

## PREPARATION

### Refuel

Use the mixture of the gasoline and the two stroke engine oil, the volume ratio is 25-30:1 (Fig-1)

### Check and clean the air filter

The air filter must be often cleaned, or the polluted air filter will lower the output power of the engine. If the core is blocked by dust, use gasoline to clean the core and the inside of the air filter, then dip in the oil, wring oil out and put the core back (Fig 2)

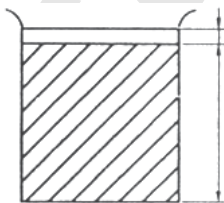


Fig 1

1. The FC Two-stroke engine oil
25. The Gasoline

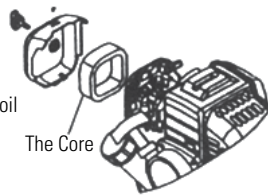


Fig 2

## START UP

1. Turn on the gasoline switch until the gasoline flows out the clear plastic pipe. (Fig 3)
2. Close the choke totally (Fig 4)  
If the engine is heated, the choke must be totally opened.
3. Open half the throttle.
4. Draw the starter several times slowly, and then draw quickly.

Note: If the excessive gasoline causes the difficult start, take down the ignition plug and the input pipe, open the choke and the throttle totally, draw the starter several times then install the input pipe and start the engine. After the startup, open the choke totally.



Fig 3

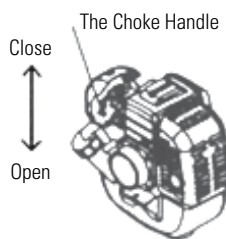


Fig 4

## RUNNING

1. After the engine starts, run 3-5 minutes at a low speed
2. When the engine is heated enough, adjust the throttle handle to the corresponding speed.
3. Note: don't accelerate abruptly due to bad lubrication of the engine at the beginning of startup.
4. Avoid the speedy idle motion and over speed motion. If the throttle is totally opened, the engine will run over speed, which not only shortens the service life of the engine but also causes more problems in the engine.

## STOPPING

1. Reduce the gasoline engine to the slowest speed and run 3-5 mins
2. Press the stop switch to stop the engine.

## MAINTENANCE

### 1. Daily check

- Check all screws and nuts
- Check oil leakage or air leakage

### 2. Check after running 20 hours

- Clean the core of the air cleaner
- Clean the gasoline filter

### 3. Check after running 50 hours

- Refasten the nuts of the cylinder
- Clean the accumulated carbon both in the combustion chamber and in the exhaust of the cylinder
- Clean the accumulated carbon in the ignition plug, adjust the clearance to 0.6mm (Fig 5)
- Clean the accumulated carbon both in the intake and in the exhaust of the muffler (Fig 6,7)



Fig 5

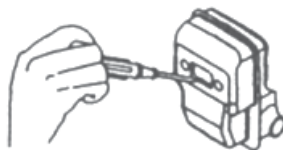


Fig 6

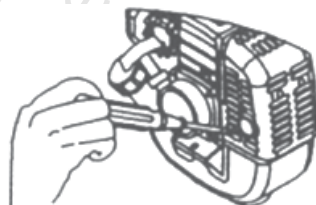


Fig 7

## STORAGE

If the gasoline engine isn't used for a long time, it must be maintained as follows:

1. Remove the fuel in the tank and in the carburetor, close the choke totally, draw the starter 3-5 times.
2. Take down the spark plug, add certain engine oil from the spark plug hole into the cylinder, and draw the starter 2-3 times to move the piston to the top dead center, then install the spark plug.
3. Use the soft cloth with engine oil to clean the surface of the engine, stor the engine in a dry and windy place for the next use.

## TROUBLE SHOOTING

### 1. Fail to start

- Oil switch is not turned on
- Gasoline is mixed with water, replace it
- The ignition plug has accumulated carbon or has been broken
- Poor contact of the high voltage wire with the spark plug

### 2. The engine can start, but can't run fast

- The choke is either open or closed fully
- The ratio of engine oil and the gasoline is normal or not
- May be there is water in gasoline

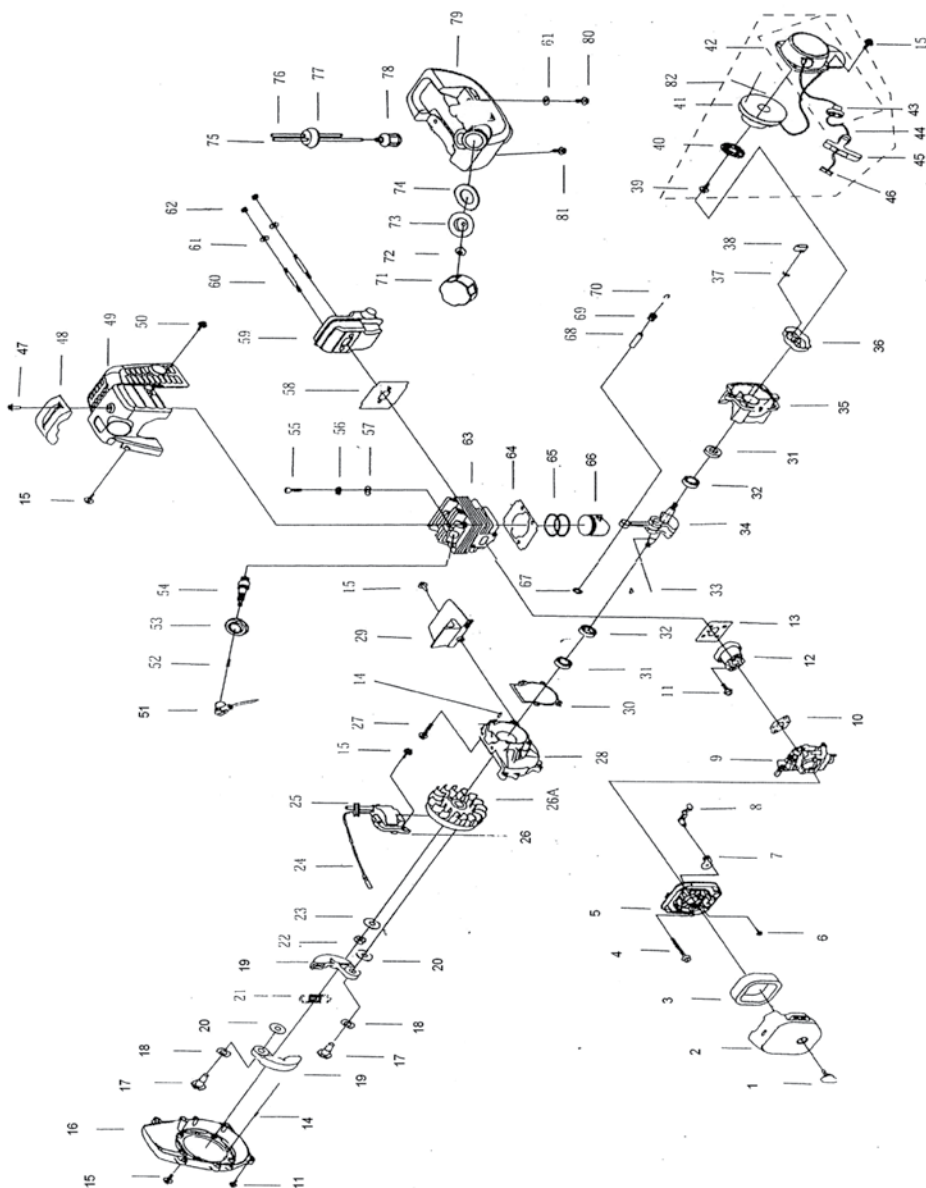
### 3. The gasoline engine can run, but has not enough power

- May be the core of the air filter is blocked by dust
- Maybe the cylinder exhaust and the muffler are blocked by accumulated carbon
- The piston, the piston rings and cylinder have been badly worn out
- May be the gasoline filter is blocked by dust
- The body or the top of the shaft has oil leakage and air leakage

### 4. The gasoline engine stops suddenly when running

- Run out of the gasoline
- The high voltage wire drops
- The ignition plug has accumulated carbon or has been broken
- The gasoline filter is blocked by dust
- Maybe there is water in the gasoline
- The air hole of the tank lid is blocked by dust

# ENGINE SPARE PARTS DIAGRAM OF PORTABLE MOTORISED SPRAYER AMH-P769 with GX25 & GX35



**For Engine Spare Parts Refer GX25 Engine Manual**

PART NO.	PART NAME
AMHP-769-01	Screw
AMHP-769-02	Cleaner Outside Cover
AMHP-769-03	Filter Element
AMHP-769-04	Screw Assy
AMHP-769-05	Cleaner Inside Cover
AMHP-769-06	Screw
AMHP-769-07	Choke
AMHP-769-08	Choke Handle
AMHP-769-09	Carburetor
AMHP-769-10	Gasket, Carburetor Side
AMHP-769-11	Screw Assy
AMHP-769-12	Inlet Main fold
AMHP-769-13	Washer, Cylinder Side
AMHP-769-14	Pin
AMHP-769-15	Screw Assy
AMHP-769-16	Fan Cover
AMHP-769-17	Clutch Step Screw
AMHP-769-18	Washer
AMHP-769-19-21	Clutch Assy
AMHP-769-20	Washer
AMHP-769-21	Spring
AMHP-769-22	Nut
AMHP-769-23	Washer
AMHP-769-24	Stop Cord Comp.
AMHP-769-25	Primary Cord Grommet
AMHP-769-26	Magneto Stator
AMHP-769-26	Magneto Rotor
AMHP-769-27	Screw
AMHP-769-28	Front Half Crankcase

PART NO.	PART NAME
AMHP-769-29	Guide Plate
AMHP-769-30	Gasket, Crankcase
AMHP-769-31	Oil Seal
AMHP-769-32	Ball-Bearing
AMHP-769-33	Key
AMHP-769-34	Crankshaft Comp.
AMHP-769-35	Rear Half Crankcase
AMHP-769-36	Starter Case AM 708 Only
AMHP-769-36+37+38	Starter Pawl & Spring Assy AM 708
AMHP-769-36+37+38	Starter Pawl & Spring Assy AMP 768
AMHP-769-37	Starter Pawl Spring
AMHP-769-38	Starter Pawl
AMHP-769-39	Screw
AMHP-769-40	Recoil Spring
AMHP-769-41	Starter Pulley
AMHP-769-42	Recoil Starter Body
AMHP-769-43	Rope Guide
AMHP-769-44	Rope
AMHP-769-45	Starter Handle
AMHP-769-46	Gasket
AMHP-769-47	Screw Assy
AMHP-769-48	Cover
AMHP-769-49	Cover
AMHP-769-50	Screw Assy
AMHP-769-50	Gasket Muffler
AMHP-769-51	Plug Cap
AMHP-769-52	Screw
AMHP-769-53	Plug Cover
AMHP-769-54	Plug



PART NO.	PART NAME
AMHP-769-55	Screw
AMHP-769-56	Washer
AMHP-769-57	Washer
AMHP-769-58	Sealing Washer
AMHP-769-59	Muffler
AMHP-769-60	Bolt
AMHP-769-61	Washer
AMHP-769-62	Nut
AMHP-769-63	Cylinder
AMHP-769-64	Gasket, Cylinder
AMHP-769-65	Ring, Piston
AMHP-769-66	Piston
AMHP-769-66	Gasket, Fuel Tank Cap
AMHP-769-67	Stop Ring
AMHP-769-68	Pin, Piston
AMHP-769-69	Needle, Bearing
AMHP-769-70	Piston Pin Circlet
AMHP-769-71	Fuel Tank Cap
AMHP-769-72	Air Inlet Mouth
AMHP-769-73	Frame
AMHP-769-74	Sealing Washer
AMHP-769-75	Outlet Fuel Pipe
AMHP-769-76	Inlet Fuel Pipe
AMHP-769-77	Primary Cord Grommet
AMHP-769-78	Cleaner
AMHP-769-79	Fuel Tank - AM 708
AMHP-769-80	Screw
AMHP-769-81	Screw
AMHP-769-82	Starter Pulley Assy

# PUMP SPARE PARTS DIAGRAM OF PORTABLE MOTORISED SPRAYER AMH-P769 withGX25 & GX35

The diagram illustrates the exploded view of the pump assembly for the AMH-P769 portable motorised sprayer. Key components shown include the engine, pump housing, various shafts, gears, and nozzles, all labeled with numbers for identification. The diagram is a technical drawing showing the assembly structure of the pump.

10

PART NO.	PART NAME
AMHP-769-25	N/A
AMHP-769-28	Stop Switch
AMHP-769-32	Cord Comp
AMHP-769-34	Throttle Wire
AMHP-769-34-1	Throttle Lever
AMHP-769-38	N/A
AMHP-769-39	Engine Stand
AMHP-769-46	Joint S
AMHP-769-46-1	Joint-L
AMHP-769-47	Crank Case
AMHP-769-48	Bearing
AMHP-769-50	Shaft
AMHP-769-51	Bearing
AMHP-769-52	O-Ring
AMHP-769-53	Steel Pipe
AMHP-769-54	Gasket
AMHP-769-55	Drum Case
AMHP-769-56	Drum Clutch
AMHP-769-57	Bearing
AMHP-769-58	Bearing
AMHP-769-60	Gear Shaft and Gear
AMHP-769-61	Bearing
AMHP-769-62	O-Ring
AMHP-769-63	Oil Inlet Cup
AMHP-769-64	Crankcase Cover
AMHP-769-64-1	O-Ring
AMHP-769-65	N/A
AMHP-769-66	O-Ring

PART NO.	PART NAME
AMHP-769-67	Oil Glass
AMHP-769-68	O-Ring
AMHP-769-69	Drain Plug
AMHP-769-70	Oil Seal
AMHP-769-70-1	Oil Seal
AMHP-769-71	O-Ring
AMHP-769-72	Adjusting Ring
AMHP-769-73	Grease Ring
AMHP-769-74	V-Packing Upper Seal
AMHP-769-75	V-Packing
AMHP-769-76	N/A
AMHP-769-77	Packing Seat
AMHP-769-78	Cylinder
AMHP-769-79+80	Grease Cup
AMHP-769-81	Valve Assy
AMHP-769-81-1	N/A
AMHP-769-81-2	N/A
AMHP-769-81-3	N/A
AMHP-769-81-4	N/A
AMHP-769-81-5	N/A
AMHP-769-81-6	N/A
AMHP-769-82	Suction Chamber
AMHP-769-83	Clip-L
AMHP-769-83-1	Clip-S
AMHP-769-84	Suction Hose
AMHP-769-85	Outlet Chamber
AMHP-769-86	Valve Seat

PART NO.	PART NAME
AMHP-769-88	Pressure Valve
AMHP-769-89	Pressure Valve Rod
AMHP-769-90	Spring
AMHP-769-93	Relief Valve Assy
AMHP-769-94	Nut
AMHP-769-95	Pressure Valve Screw
AMHP-769-96	Pressure Adjusting
AMHP-769-97	Overflow Hose
AMHP-769-99	Plunger
AMHP-769-100	High Pressure Hose
AMHP-769-101	Cylinder
AMHP-769-102	Suction Chamber
AMHP-769-103	Outlet Chamber
AMHP-769-104	Suction Hose
AMHP-769-105	High Pressure Hose
AMHP-769-106	N/A
AMHP-769-107	Hose Pipe Handle
AMHP-769-108	Roller
AMHP-769-109	Ball Cock
AMHP-769-110	N/A
AMHP-769-111	Spray Rod (SG101-C)
AMHP-769-112	N/A
AMHP-769-123	Fixed Plate



## Warranty Card

## CUSTOMER COPY



Purchaser's Name &amp; Address

Product Name

AMH-P769 ☒ with GX25 ☐ AMH-P769 ☐ with GX25 ☐

Product Serial No.

Invoice / DN No.

Date of Delivery

Dealer's Office Seal

Dealer Sign \_\_\_\_\_

Customer Sign. \_\_\_\_\_

I/We accept the terms and conditions of Warranty as in the Warranty Card.

## Warranty Card

## DEALER'S COPY



Purchaser's Name &amp; Address

Product Name

AMH-P769 ☒ with GX25 ☐ AMH-P769 ☐ with GX25 ☐

Product Serial No.

Invoice / DN No.

Date of Delivery

Dealer's Office Seal

Dealer Sign \_\_\_\_\_

Customer Sign. \_\_\_\_\_

I/We accept the terms and conditions of Warranty as in the Warranty Card.

## Warranty Card

## COMPANY COPY



Purchaser's Name &amp; Address

Product Name

AMH-P769 ☒ with GX25 ☐ AMH-P769 ☐ with GX25 ☐

Product Serial No.

Invoice / DN No.

Date of Delivery

Dealer's Office Seal

Dealer Sign \_\_\_\_\_

Customer Sign. \_\_\_\_\_

I/We accept the terms and conditions of Warranty as in the Warranty Card.

1. **LIMITED WARRANTY PERIOD** : For a period of six months from the date of Sale / delivery of the product which ever is earlier. 2. **LIMITED WARRANTY OBLIGATION** : Replacement of defective part(s) by authorized dealer are free of charges. If found defective by reasons of defective material / poor workmanship, parts will be replaced and there will be no value re-imburement. 3. **TERMS & CONDITIONS** : a. Claims under warranty will be accepted on submission of Warranty Card duly filled and stamped by authorized dealer together with the original purchase document. : b. Shipping / transportation / Incidental charges incurred in replacing defective parts under warranty shall be borne by the purchaser.

**WARRANTY null & void if**

- (i) Lack of maintenance, (ii) Incorrect use of the machine or tampering, (iii) Use of non-genuine spare parts, (iv) Usage of acids, solvents, or any flammable materials, (v) Non-usage of filter water / clear water / soft water & using water above 40°C temperature, (vi) While using the pressure washers to draw water which is contaminated with dust & solvents (eg. paint thinners, gasoline, oil, etc.), (vii) Repair done by unauthorized service people, (viii) Those parts subject to wear & tear due to normal operations and plastic parts, rubber items etc, (ix) Loose connections, faulty electrical fixtures & fluctuations in power supply.
4. Should any failure occur during or after the warranty period, customer does not have the right to interrupt payment / price discount.
5. Incidental or consequential damages like inconvenience commercial loss, loss of tie, mental agony etc.
6. Loss of any nature due to operation or non-operation is not covered under warranty.
7. All free service are at Dealer's service point only.
8. Warranty ceases if service is not done periodically.
9. The attached card should be completed and returned to Ratnagiri Impex Pvt. Ltd. for registration immediately after sale / delivery.
10. The warranty is void unless you register the warranty card with Ratnagiri Impex Pvt. Ltd.
11. The decision of Ratnagiri Impex Pvt. Ltd., in settling the warranty is final in all respects.
12. All disputes are subject to Bangalore Courts Jurisdiction

1. **LIMITED WARRANTY PERIOD** : For a period of six months from the date of Sale / delivery of the product which ever is earlier. 2. **LIMITED WARRANTY OBLIGATION** : Replacement of defective part(s) by authorized dealer are free of charges. If found defective by reasons of defective material / poor workmanship, parts will be replaced and there will be no value re-imburement. 3. **TERMS & CONDITIONS** : a. Claims under warranty will be accepted on submission of Warranty Card duly filled and stamped by authorized dealer together with the original purchase document. : b. Shipping / transportation / Incidental charges incurred in replacing defective parts under warranty shall be borne by the purchaser.

**WARRANTY null & void if**

- (i) Lack of maintenance, (ii) Incorrect use of the machine or tampering, (iii) Use of non-genuine spare parts, (iv) Usage of acids, solvents, or any flammable materials, (v) Non-usage of filter water / clear water / soft water & using water above 40°C temperature, (vi) While using the pressure washers to draw water which is contaminated with dust & solvents (eg. paint thinners, gasoline, oil, etc.), (vii) Repair done by unauthorized service people, (viii) Those parts subject to wear & tear due to normal operations and plastic parts, rubber items etc, (ix) Loose connections, faulty electrical fixtures & fluctuations in power supply.
4. Should any failure occur during or after the warranty period, customer does not have the right to interrupt payment / price discount.
5. Incidental or consequential damages like inconvenience commercial loss, loss of tie, mental agony etc.
6. Loss of any nature due to operation or non-operation is not covered under warranty.
7. All free service are at Dealer's service point only.
8. Warranty ceases if service is not done periodically.
9. The attached card should be completed and returned to Ratnagiri Impex Pvt. Ltd. for registration immediately after sale / delivery.
10. The warranty is void unless you register the warranty card with Ratnagiri Impex Pvt. Ltd.
11. The decision of Ratnagiri Impex Pvt. Ltd., in settling the warranty is final in all respects.
12. All disputes are subject to Bangalore Courts Jurisdiction

1. **LIMITED WARRANTY PERIOD** : For a period of six months from the date of Sale / delivery of the product which ever is earlier. 2. **LIMITED WARRANTY OBLIGATION** : Replacement of defective part(s) by authorized dealer are free of charges. If found defective by reasons of defective material / poor workmanship, parts will be replaced and there will be no value re-imburement. 3. **TERMS & CONDITIONS** : a. Claims under warranty will be accepted on submission of Warranty Card duly filled and stamped by authorized dealer together with the original purchase document. : b. Shipping / transportation / Incidental charges incurred in replacing defective parts under warranty shall be borne by the purchaser.

**WARRANTY null & void if**

- (i) Lack of maintenance, (ii) Incorrect use of the machine or tampering, (iii) Use of non-genuine spare parts, (iv) Usage of acids, solvents, or any flammable materials, (v) Non-usage of filter water / clear water / soft water & using water above 40°C temperature, (vi) While using the pressure washers to draw water which is contaminated with dust & solvents (eg. paint thinners, gasoline, oil, etc.), (vii) Repair done by unauthorized service people, (viii) Those parts subject to wear & tear due to normal operations and plastic parts, rubber items etc, (ix) Loose connections, faulty electrical fixtures & fluctuations in power supply.
4. Should any failure occur during or after the warranty period, customer does not have the right to interrupt payment / price discount.
5. Incidental or consequential damages like inconvenience commercial loss, loss of tie, mental agony etc.
6. Loss of any nature due to operation or non-operation is not covered under warranty.
7. All free service are at Dealer's service point only.
8. Warranty ceases if service is not done periodically.
9. The attached card should be completed and returned to Ratnagiri Impex Pvt. Ltd. for registration immediately after sale / delivery.
10. The warranty is void unless you register the warranty card with Ratnagiri Impex Pvt. Ltd.
11. The decision of Ratnagiri Impex Pvt. Ltd., in settling the warranty is final in all respects.
12. All disputes are subject to Bangalore Courts Jurisdiction





ratnagiri  
impex  
BRIDGING THE FUTURE - NOW

## 1st Free Service Coupon

ISO 9001-2008  
CERTIFIED COMPANY

FREE SERVICE COUPON (30 Days / 20 hrs (Which ever is earlier))

Model  
AMH-P769 ☒ with GX25 ☐ AMH-P769 ☒ with GX25 ☐

PDI Date

Service No.

Dealer's Office Seal

Dealer Signature.....

Serial Number

Purchase bill no.  Date

- Operations:
- Check and Test the Fuel Mixture.
  - Check and Clean the Air Filter
  - Check, Clean and Adjust the Spark plug
  - Check and Adjust the Carburetor Tuning
  - Check and Sharpen the cutting Tools
  - Start and Check the Noise, Vibration, Loosen / Fasteners etc.
  - Product familiarization on Usage
  - Routine maintenance and Storage

Customer Signature.....

Conditions: Operations listed have been performed to my entire satisfaction without any labour charges. Only consumables were charged.



agriculture | horticulture | sericulture | plantations | forestry | garden | health care

WARRANTY AND FREE SERVICE COUPON



ratnagiri  
impex  
BRIDGING THE FUTURE - NOW

## 2nd Free Service Coupon

ISO 9001-2008  
CERTIFIED COMPANY

FREE SERVICE COUPON (30 Days / 20 hrs (Which ever is earlier))

Model  
AMH-P769 ☒ with GX25 ☐ AMH-P769 ☒ with GX25 ☐

PDI Date

Service No.

Dealer's Office Seal

Dealer Signature.....

Serial Number

Purchase bill no.  Date

- Operations:
- Check and Test the Fuel Mixture.
  - Check and Clean the Air Filter
  - Check, Clean and Adjust the Spark plug
  - Check and Adjust the Carburetor Tuning
  - Check and Sharpen the cutting Tools
  - Start and Check the Noise, Vibration, Loosen / Fasteners etc.
  - Product familiarization on Usage
  - Routine maintenance and Storage

Customer Signature.....

Conditions: Operations listed have been performed to my entire satisfaction without any labour charges. Only consumables were charged.



agriculture | horticulture | sericulture | plantations | forestry | garden | health care

WARRANTY AND FREE SERVICE COUPON



ratnagiri  
impex  
BRIDGING THE FUTURE - NOW

## 3rd Free Service Coupon

ISO 9001-2008  
CERTIFIED COMPANY

FREE SERVICE COUPON (30 Days / 20 hrs (Which ever is earlier))

Model  
AMH-P769 ☒ with GX25 ☐ AMH-P769 ☒ with GX25 ☐

PDI Date

Service No.

Dealer's Office Seal

Dealer Signature.....

Serial Number

Purchase bill no.  Date

- Operations:
- Check and Test the Fuel Mixture.
  - Check and Clean the Air Filter
  - Check, Clean and Adjust the Spark plug
  - Check and Adjust the Carburetor Tuning
  - Check and Sharpen the cutting Tools
  - Start and Check the Noise, Vibration, Loosen / Fasteners etc.
  - Product familiarization on Usage
  - Routine maintenance and Storage

Customer Signature.....

Conditions: Operations listed have been performed to my entire satisfaction without any labour charges. Only consumables were charged.



agriculture | horticulture | sericulture | plantations | forestry | garden | health care

WARRANTY AND FREE SERVICE COUPON



Small Maintenance. Big Savings.



Small Maintenance. Big Savings.



Small Maintenance. Big Savings.

# Do's & Don'ts

- Always read the instruction manual supplied along with the equipments and understand the correct installation and operating procedures before attempting to use the equipments.
- It is important to use the personal protection equipments such as head helmet with visor, ear defenders, goggles, safety gloves, cut resistant shoes, trousers and jackets while operating potentially dangerous machines.
- Avoid untrained persons using the equipments. Children must not be allowed to handle these equipments.
- Always use genuine spares and accessories in repairs and usage to derive maximum life of the equipments.
- Always keep the equipments in good working condition to minimise loss of output as well as to reduce the pollution and save the environment.
- Do not use the machine within range of persons unless they wear protective clothing.
- Do not operate the machine when fatigued or under the influence of alcohol or drugs.
- When the machine is running, please maintain a constant water supply. Without water circulation will damage the sealing rings of the machine.
- For more query kindly contact for our Service Center/Dealer/franchise

# Agrimate Army For Pest Control

ANY WHERE - ANY TIME - ANY CROP



  
**AGRIMATE®**  
Maximum Power - Super Economy

RATNAGIRI IMPEX PVT LTD  
Annapurna House, #1/1G, 7th Cross, New Guddadahalli  
Mysore Road, Bangalore-560 026  
Customer Care: 1800 425 3036  
email: [marketing@ratnagiriimpex.com](mailto:marketing@ratnagiriimpex.com)



Marketed by:  
 **ratnagiri  
impex**  
BRINGING YOU THE FUTURE... NOW

[www.ratnagiriimpex.com](http://www.ratnagiriimpex.com)

AN ISO 9001:2008 CERTIFIED COMPANY