

# AM-P768-PRO Portable Power Sprayer



**DISCLAIMER:** DUE TO CONSTANT UPGRADATION, FEATURES AND SPECIFICATIONS ARE SUBJECT TO CHANGE WITHOUT NOTICE



**BEFORE OPERATING THIS MACHINE,  
PLEASE READ THESE INSTRUCTIONS CAREFULLY**

## CAUTION

1. Stop running the gasoline engine before the tank is refueled, and ensure that the gasoline engine is far from the fire. Against the position, discharge the exhaust gas from the rooms, channels using gasoline engine or any other closed places.
2. Forbid to touch the muffler and the body when the gasoline engine runs and just stops.
3. Don't touch the ignition plug cap and wires, to avoid the electrical shock
4. Forbid children and persons unconcerned to touch the gasoline engine.
5. Ensure the cooling of the muffler and the body, cover the gasoline engine after daily work.
6. Against the problem, the damage or the misfire of gasoline engine, check and maintain the gasoline regularly and clean the deposit carbon in the muffler and in the cylinder exhaust.
7. Forbid to use pure gasoline (without two-stroke engine oil) as fuel.
8. Against the damage of gasoline engine and the instruments, forbid to accelerate abruptly, to run speedily and stop abruptly.
9. Forbid the drunk, the dizzy and the pregnant to use the gasoline engine.

## PREPARATION

### Refuel

Use the mixture of the gasoline and the two stroke engine oil, the volume ratio is 25-30:1 (Fig-1)

### Check and clean the air filter

The air filter must be often cleaned, or the polluted air filter will lower the output power of the engine. If the core is blocked by dust, use gasoline to clean the core and the inside of the air filter, then dip in the oil, wring oil out and put the core back (Fig 2)

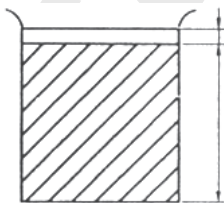


Fig 1

1. The FC Two-stroke engine oil
25. The Gasoline

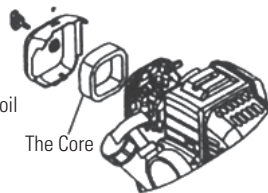


Fig 2

## START UP

1. Turn on the gasoline switch until the gasoline flows out the clear plastic pipe. (Fig 3)
2. Close the choke totally (Fig 4)  
If the engine is heated, the choke must be totally opened.
3. Open half the throttle.
4. Draw the starter several times slowly, and then draw quickly.

Note: If the excessive gasoline causes the difficult start, take down the ignition plug and the input pipe, open the choke and the throttle totally, draw the starter several times then install the input pipe and start the engine. After the startup, open the choke totally.



Fig 3

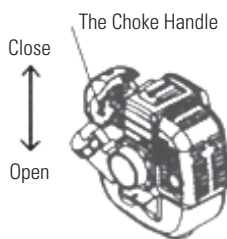


Fig 4

## RUNNING

1. After the engine starts, run 3-5 minutes at a low speed
2. When the engine is heated enough, adjust the throttle handle to the corresponding speed.
3. Note: don't accelerate abruptly due to bad lubrication of the engine at the beginning of startup.
4. Avoid the speedy idle motion and over speed motion. If the throttle is totally opened, the engine will run over speed, which not only shortens the service life of the engine but also causes more problems in the engine.

## STOPPING

1. Reduce the gasoline engine to the slowest speed and run 3-5 mins
2. Press the stop switch to stop the engine.

## MAINTENANCE

### 1. Daily check

- Check all screws and nuts
- Check oil leakage or air leakage

### 2. Check after running 20 hours

- Clean the core of the air cleaner
- Clean the gasoline filter

### 3. Check after running 50 hours

- Refasten the nuts of the cylinder
- Clean the accumulated carbon both in the combustion chamber and in the exhaust of the cylinder
- Clean the accumulated carbon in the ignition plug, adjust the clearance to 0.6mm (Fig 5)
- Clean the accumulated carbon both in the intake and in the exhaust of the muffler (Fig 6,7)

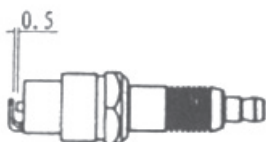


Fig 5

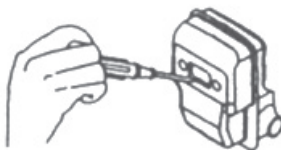


Fig 6

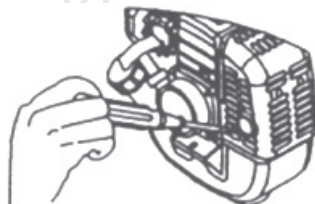


Fig 7

## STORAGE

If the gasoline engine isn't used for a long time, it must be maintained as follows:

1. Remove the fuel in the tank and in the carburetor, close the choke totally, draw the starter 3-5 times.
2. Take down the spark plug, add certain engine oil from the spark plug hole into the cylinder, and draw the starter 2-3 times to move the piston to the top dead center, then install the spark plug.
3. Use the soft cloth with engine oil to clean the surface of the engine, stor the engine in a dry and windy place for the next use.

# TRUBLE SHOOTING

## 1. Fail to start

- Oil switch is not turned on
- Gasoline is mixed with water, replace it
- The ignition plug has accumulated carbon or has been broken
- Poor contact of the high voltage wire with the spark plug

## 2. The engine can start, but can't run fast

- The choke is either open or closed fully
- The ratio of engine oil and the gasoline is normal or not
- Maybe there is water in gasoline

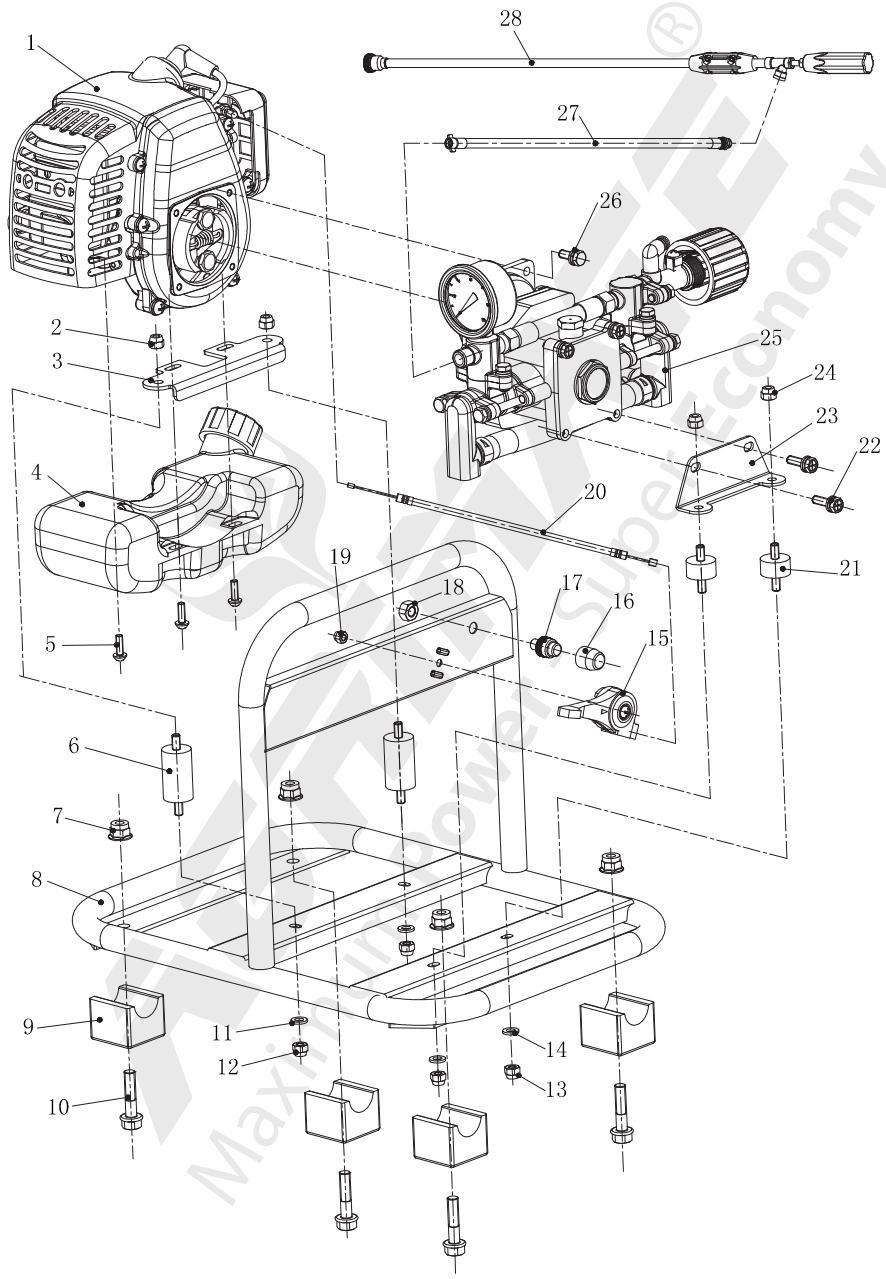
## 3. The gasoline engine can run, but has not enough power

- Maybe the core of the air filter is blocked by dust
- Maybe the cylinder exhaust and the muffler are blocked by accumulated carbon
- The piston, the piston rings and cylinder have been badly worn out
- Maybe the gasoline filter is blocked by dust
- The body or the top of the shaft has oil leakage and air leakage

## 4. The gasoline engine stops suddenly when running

- Run out of the gasoline
- The high voltage wire drops
- The ignition plug has accumulated carbon or has been broken
- The gasoline filter is blocked by dust
- Maybe there is water in the gasoline
- The air hole of the tank lid is blocked by dust

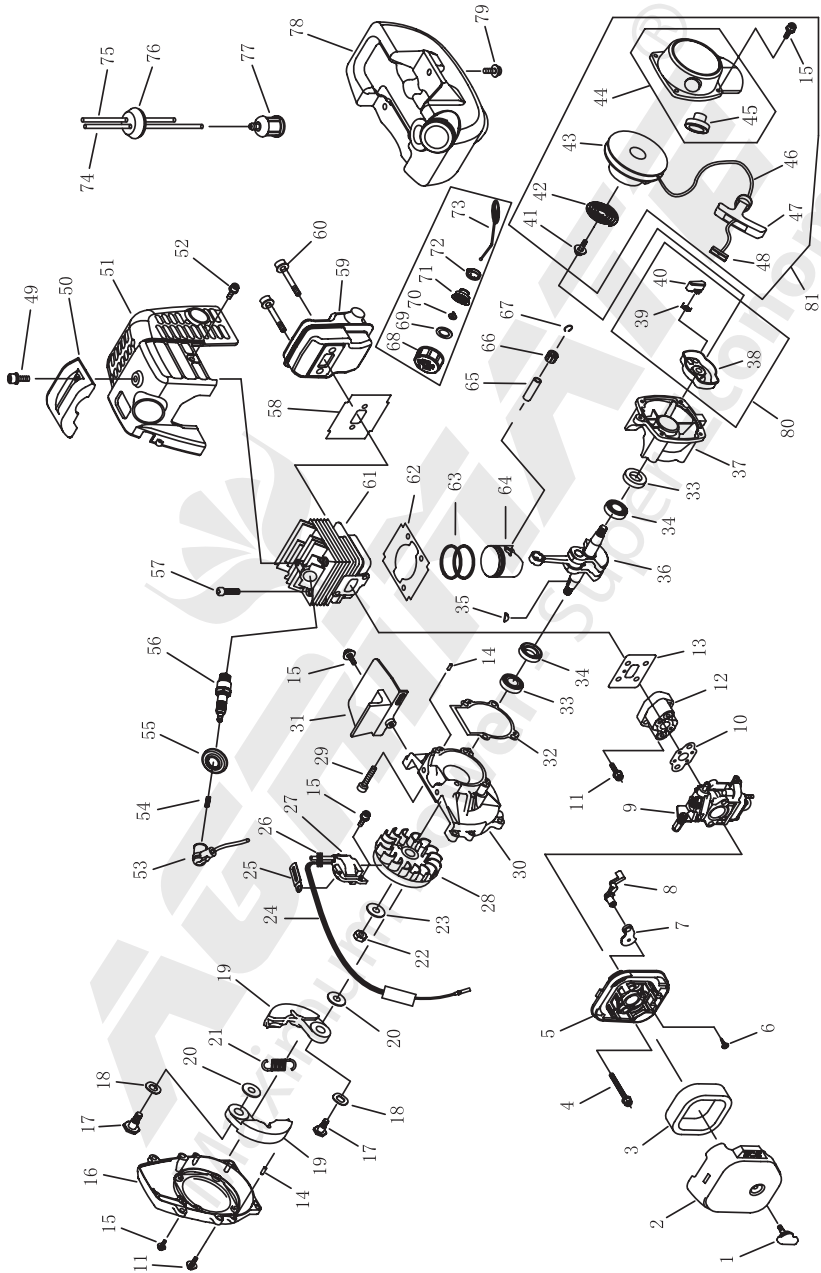
# STAND DIAGRAM OF AM P768 PRO



## STAND PARTS LIST OF AM P768 PRO

| S.N | Part No.        | Description           |
|-----|-----------------|-----------------------|
| 1   | AMP 768 PRO S01 | Engine                |
| 2   | AMP 768 PRO S02 | Nut M6                |
| 3   | AMP 768 PRO S03 | Engine stand          |
| 4   | AMP 768 PRO S04 | Oil tank              |
| 5   | AMP 768 PRO S05 | Screw M5X16           |
| 6   | AMP 768 PRO S06 | Joint                 |
| 7   | AMP 768 PRO S07 | Nut M8                |
| 8   | AMP 768 PRO S08 | Frame                 |
| 9   | AMP 768 PRO S09 | Joint                 |
| 10  | AMP 768 PRO S10 | Bolt M8*35            |
| 11  | AMP 768 PRO S11 | Washer M6             |
| 12  | AMP 768 PRO S12 | Nut M6                |
| 13  | AMP 768 PRO S13 | Nut M6                |
| 14  | AMP 768 PRO S14 | Washer M6             |
| 15  | AMP 768 PRO S15 | Flex acceler ator     |
| 16  | AMP 768 PRO S16 | Engine stop protector |
| 17  | AMP 768 PRO S17 | Engine stop switch    |
| 18  | AMP 768 PRO S18 | Nut M8                |
| 19  | AMP 768 PRO S19 | Nut M5                |
| 20  | AMP 768 PRO S20 | Cable                 |
| 21  | AMP 768 PRO S21 | Joint (pump)          |
| 22  | AMP 768 PRO S22 | Bolt M6*16            |
| 23  | AMP 768 PRO S23 | Pump stand            |
| 24  | AMP 768 PRO S24 | Nut M6                |
| 25  | AMP 768 PRO S25 | Pump                  |
| 26  | AMP 768 PRO S26 | Bolt M6*16            |
| 27  | AMP 768 PRO S27 | Outlet hose           |
| 28  | AMP 768 PRO S28 | spray gun             |

# ENGINE SPARE PARTS DIAGRAM OF AM-P768-PRO





## ENGINE SPARE PARTS LIST OF AM-P768-PRO

| S.N. | Part No.        | Description           |
|------|-----------------|-----------------------|
| 1    | AMP 768 PRO E01 | SCREW                 |
| 2    | AMP 768 PRO E02 | CLEANER OUTSIDE COVER |
| 3    | AMP 768 PRO E03 | CLEANER ELEMENT       |
| 4    | AMP 768 PRO E04 | SCREW M5X55           |
| 5    | AMP 768 PRO E05 | CLEANER INSIDE COVER  |
| 6    | AMP 768 PRO E06 | SCREW ST4.2X12-F-H    |
| 7    | AMP 768 PRO E07 | CHOKE                 |
| 8    | AMP 768 PRO E08 | CHOKE HANDLE          |
| 9    | AMP 768 PRO E09 | CARBURATOR            |
| 10   | AMP 768 PRO E10 | GASKET                |
| 11   | AMP 768 PRO E11 | SCREW M5X20           |
| 12   | AMP 768 PRO E12 | INLET MANIFOLD        |
| 13   | AMP 768 PRO E13 | CYINDER WASHER        |
| 14   | AMP 768 PRO E14 | ANNUL B3X10           |
| 15   | AMP 768 PRO E15 | SCREW M4X16           |
| 16   | AMP 768 PRO E16 | FAN COVER             |
| 17   | AMP 768 PRO E17 | CLUTCH STEP SCREW     |
| 18   | AMP 768 PRO E18 | WASHER                |
| 19   | AMP 768 PRO E19 | CLUTCH SHOE COMP.     |
| 20   | AMP 768 PRO E20 | WASHER                |
| 21   | AMP 768 PRO E21 | CLUTCH SPRING         |
| 22   | AMP 768 PRO E22 | NUT M8X1              |
| 23   | AMP 768 PRO E23 | WASHER 8              |
| 24   | AMP 768 PRO E24 | STOP CORD COMP        |
| 25   | AMP 768 PRO E25 | CLIP                  |
| 26   | AMP 768 PRO E26 | PRIMARY CORD GROMMET  |
| 27   | AMP 768 PRO E27 | MAGNETO STATOR        |

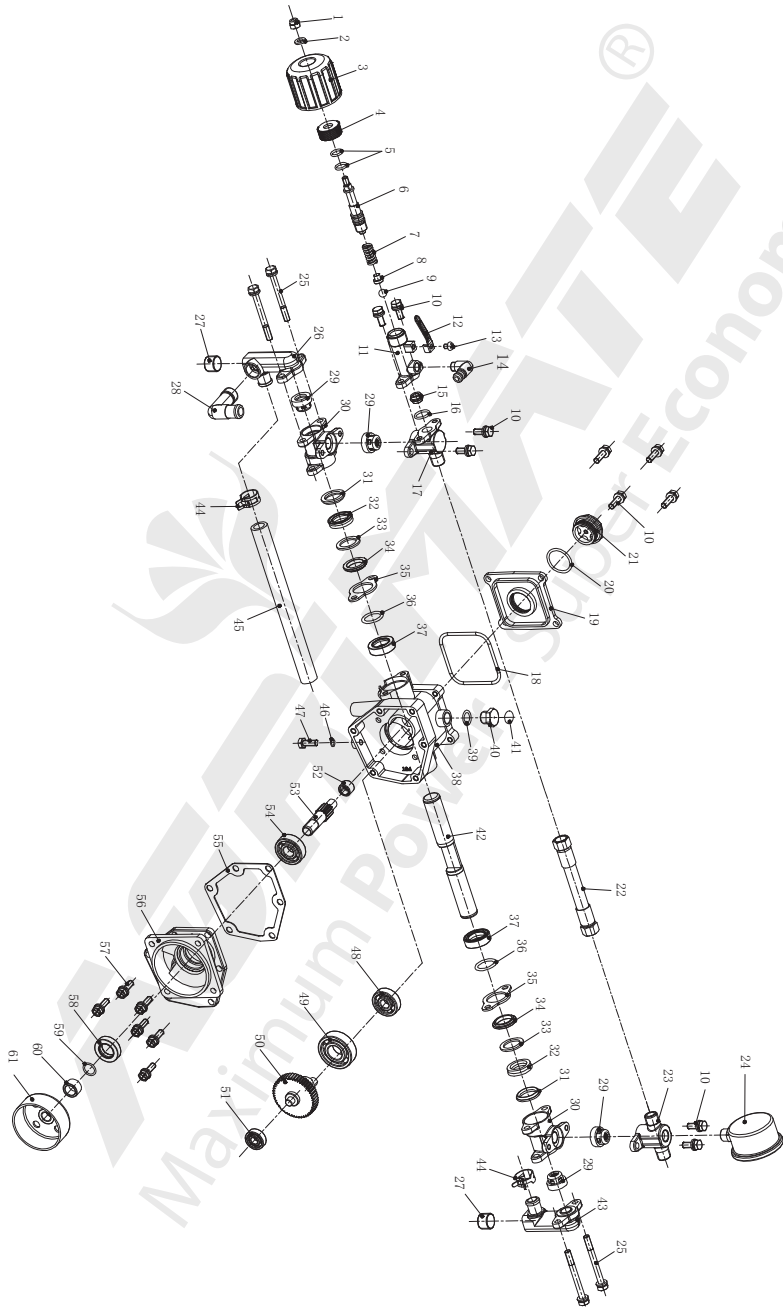
## ENGINE SPARE PARTS LIST OF AM-P768-PRO

| S.N. | Part No.        | Description           |
|------|-----------------|-----------------------|
| 28   | AMP 768 PRO E28 | MAGNETO ROTOR         |
| 29   | AMP 768 PRO E29 | SCREW M5X25           |
| 30   | AMP 768 PRO E30 | FRONT HALF CRANK CASE |
| 31   | AMP 768 PRO E31 | GUIDE PLATE           |
| 32   | AMP 768 PRO E32 | CRANK CASE GASKET     |
| 33   | AMP 768 PRO E33 | OIL SEAL              |
| 34   | AMP 768 PRO E34 | BALL BEARING 6001/P5  |
| 35   | AMP 768 PRO E35 | KEY                   |
| 36   | AMP 768 PRO E36 | CRANK SHAFT COMP.     |
| 37   | AMP 768 PRO E37 | REAR HALF CRANK CASE  |
| 38   | AMP 768 PRO E38 | STARTER PULEEY ASS'Y  |
| 39   | AMP 768 PRO E39 | STARTER PAWL SPRING   |
| 40   | AMP 768 PRO E40 | STARTER PAWL          |
| 41   | AMP 768 PRO E41 | SCREW M5X10           |
| 42   | AMP 768 PRO E42 | RECOIL SPRING         |
| 43   | AMP 768 PRO E43 | STARTER ROPE REEL     |
| 44   | AMP 768 PRO E44 | RECOIL STARTER BODY   |
| 45   | AMP 768 PRO E45 | ROPE GUIDE            |
| 46   | AMP 768 PRO E46 | ROPE                  |
| 47   | AMP 768 PRO E47 | STARTER HANDLE        |
| 48   | AMP 768 PRO E48 | GASKET                |
| 49   | AMP 768 PRO E49 | SCREW M5X14           |
| 50   | AMP 768 PRO E50 | COVER                 |
| 51   | AMP 768 PRO E51 | COVER                 |
| 52   | AMP 768 PRO E52 | SCREW M4X12           |
| 53   | AMP 768 PRO E53 | PLUG CAP              |
| 54   | AMP 768 PRO E54 | CLICK SPRING          |

## ENGINE SPARE PARTS LIST OF AM-P768-PRO

| S.N. | Part No.        | Description         |
|------|-----------------|---------------------|
| 55   | AMP 768 PRO E55 | PLUG COVER          |
| 56   | AMP 768 PRO E56 | SPARK PLUG          |
| 57   | AMP 768 PRO E57 | SCREW M5X20         |
| 58   | AMP 768 PRO E58 | GASKET              |
| 59   | AMP 768 PRO E59 | MUFFLER COMP.       |
| 60   | AMP 768 PRO E60 | SCREW M5X50-10.9    |
| 61   | AMP 768 PRO E61 | CYLINDER            |
| 62   | AMP 768 PRO E62 | CYLINDER WASHER     |
| 63   | AMP 768 PRO E63 | PISTON RING         |
| 64   | AMP 768 PRO E64 | PISTON              |
| 65   | AMP 768 PRO E65 | PISTON PIN          |
| 66   | AMP 768 PRO E66 | NEEDLE BEARING      |
| 67   | AMP 768 PRO E67 | PISTON PIN CIRCLLET |
| 68   | AMP 768 PRO E68 | FUEL TANK LID       |
| 69   | AMP 768 PRO E69 | GASKET              |
| 70   | AMP 768 PRO E70 | AIRINLET MOUTH      |
| 71   | AMP 768 PRO E71 | INSIDE COVER        |
| 72   | AMP 768 PRO E72 | CASING              |
| 73   | AMP 768 PRO E73 | CHAIN               |
| 74   | AMP 768 PRO E74 | FUEL PIPE           |
| 75   | AMP 768 PRO E75 | FUEL PIPE           |
| 76   | AMP 768 PRO E76 | PLUG                |
| 77   | AMP 768 PRO E77 | CLEANER             |
| 78   | AMP 768 PRO E78 | FUEL TANK LID       |
| 79   | AMP 768 PRO E79 | SCREW M5X16         |
| 80   | AMP 768 PRO E80 | STARTER PULLEY ASSY |
| 81   | AMP 768 PRO E81 | STARTER             |

# PUMP SPARE PARTS DIAGRAM OF AM-P768-PRO



# PUMP SPARE PARTS LIST OF AM P768 PRO

| S.N. | PART NO.           | PARTICULARS          |
|------|--------------------|----------------------|
| 1    | AMP-768-PRO-PG-R01 | Nut M6               |
| 2    | AMP-768-PRO-PG-R02 | Washer D6            |
| 3    | AMP-768-PRO-PG-R03 | Pressure wheel       |
| 4    | AMP-768-PRO-PG-R04 | Nut                  |
| 5    | AMP-768-PRO-PG-R05 | O-ring               |
| 6    | AMP-768-PRO-PG-R06 | Pressure valve rod   |
| 7    | AMP-768-PRO-PG-R07 | Spring               |
| 8    | AMP-768-PRO-PG-R08 | Ball seat            |
| 9    | AMP-768-PRO-PG-R09 | Steel ball           |
| 10   | AMP-768-PRO-PG-R10 | Bolt                 |
| 11   | AMP-768-PRO-PG-R11 | Relief valve assy    |
| 12   | AMP-768-PRO-PG-R12 | Pin                  |
| 13   | AMP-768-PRO-PG-R13 | Screw M5*6.5         |
| 14   | AMP-768-PRO-PG-R14 | Overflow elbow       |
| 15   | AMP-768-PRO-PG-R15 | Valve seat           |
| 16   | AMP-768-PRO-PG-R16 | o-ring               |
| 17   | AMP-768-PRO-PG-R17 | Outlet chamber-L     |
| 18   | AMP-768-PRO-PG-R18 | O-ring               |
| 19   | AMP-768-PRO-PG-R19 | Crankcase cover      |
| 20   | AMP-768-PRO-PG-R20 | O-ring               |
| 21   | AMP-768-PRO-PG-R21 | Al. pressure gauge   |
| 22   | AMP-768-PRO-PG-R22 | Outlet pressure hose |
| 23   | AMP-768-PRO-PG-R23 | Outlet chamber-R     |
| 24   | AMP-768-PRO-PG-R24 | Pressure gauge       |
| 25   | AMP-768-PRO-PG-R25 | Bolt M6*60           |
| 26   | AMP-768-PRO-PG-R26 | Suction chamber -L   |
| 27   | AMP-768-PRO-PG-R27 | Nut                  |
| 28   | AMP-768-PRO-PG-R28 | Suction elbow        |
| 29   | AMP-768-PRO-PG-R29 | Valve assy           |
| 30   | AMP-768-PRO-PG-R30 | Cylinder             |
| 31   | AMP-768-PRO-PG-R31 | Packing seat         |

| S.N. | PART NO.           | PARTICULARS        |
|------|--------------------|--------------------|
| 32   | AMP-768-PRO-PG-R32 | Fabirc V-packing   |
| 33   | AMP-768-PRO-PG-R33 | Gasket             |
| 34   | AMP-768-PRO-PG-R34 | Grand              |
| 35   | AMP-768-PRO-PG-R35 | Fixed seat         |
| 36   | AMP-768-PRO-PG-R36 | O-RING             |
| 37   | AMP-768-PRO-PG-R37 | Oil Seal 18X28X8   |
| 38   | AMP-768-PRO-PG-R38 | Crankcase          |
| 39   | AMP-768-PRO-PG-R39 | O-ring             |
| 40   | AMP-768-PRO-PG-R40 | Oil inlet bolt     |
| 41   | AMP-768-PRO-PG-R41 | Paster             |
| 42   | AMP-768-PRO-PG-R42 | Ceramic plunger    |
| 43   | AMP-768-PRO-PG-R43 | Suction chamber -R |
| 44   | AMP-768-PRO-PG-R44 | Clip               |
| 45   | AMP-768-PRO-PG-R45 | Suction hose       |
| 46   | AMP-768-PRO-PG-R46 | O ring             |
| 47   | AMP-768-PRO-PG-R47 | Bolt               |
| 48   | AMP-768-PRO-PG-R48 | Bearing 6200       |
| 49   | AMP-768-PRO-PG-R49 | Bearing 6203       |
| 50   | AMP-768-PRO-PG-R50 | Gear               |
| 51   | AMP-768-PRO-PG-R51 | Bearing 608        |
| 52   | AMP-768-PRO-PG-R52 | Bearing HK1010     |
| 53   | AMP-768-PRO-PG-R53 | Gear shaft         |
| 54   | AMP-768-PRO-PG-R54 | Bearing 6201       |
| 55   | AMP-768-PRO-PG-R55 | Gasket             |
| 56   | AMP-768-PRO-PG-R56 | Drum case          |
| 57   | AMP-768-PRO-PG-R57 | BoltM*16           |
| 58   | AMP-768-PRO-PG-R58 | Oil seal           |
| 59   | AMP-768-PRO-PG-R59 | o-ring             |
| 60   | AMP-768-PRO-PG-R60 | Pipe               |
| 61   | AMP-768-PRO-PG-R61 | Cluth drum         |

## INSPECTION & MAINTENANCE

For safety use, make sure the machine is cleaned every three-months. Before working, make sure to inspect the filter and the nozzle, and ensure there is no impurity. After working, make sure there is no water in the pump and the hose.

If the machine needs to be repaired in the guarantee period, please return the machine to the shop. You need to provide the certificate of purchase in order to repair or get the substitute.

Before Packing, the machine should be cleaned, then use closed packaging, packaging should be firm. Store the machine in dry place.

For transportation safety. The machine should comply with ISTA.



Meaning of crossed - out wheeled dustbin:

Do not dispose of electrical machines as unsorted municipal waste, use separate collection facilities.

If electrical machines are disposed of in landfills or dumps, hazardous substances can leak into the groundwater and get into the food chain, damaging your health and well-being.

When replacing old machines with new ones, the retailer is legally obligated to take back your old machine for disposals at least free of charge.

Warranty Card

CUSTOMER COPY



Purchaser's Name & Address

\_\_\_\_\_

Product Name

AM-P768-PRO Portable Power Sprayer

Product Serial No.

\_\_\_\_\_

Invoice / DN No.

\_\_\_\_\_

Date of Delivery

\_\_\_\_\_

Dealer's Office Seal

\_\_\_\_\_

Dealer Sign \_\_\_\_\_

Customer Sign. \_\_\_\_\_

I/We accept the terms and conditions of Warranty as in the Warranty Card.

Warranty Card

DEALER'S COPY



Purchaser's Name & Address

\_\_\_\_\_

Product Name

AM-P768-PRO Portable Power Sprayer

Product Serial No.

\_\_\_\_\_

Invoice / DN No.

\_\_\_\_\_

Date of Delivery

\_\_\_\_\_

Dealer's Office Seal

\_\_\_\_\_

Dealer Sign \_\_\_\_\_

Customer Sign. \_\_\_\_\_

I/We accept the terms and conditions of Warranty as in the Warranty Card.

Warranty Card

COMPANY COPY



Purchaser's Name & Address

\_\_\_\_\_

Product Name

AM-P768-PRO Portable Power Sprayer

Product Serial No.

\_\_\_\_\_

Invoice / DN No.

\_\_\_\_\_

Date of Delivery

\_\_\_\_\_

Dealer's Office Seal

\_\_\_\_\_

Dealer Sign \_\_\_\_\_

Customer Sign. \_\_\_\_\_

I/We accept the terms and conditions of Warranty as in the Warranty Card.

1. **LIMITED WARRANTY PERIOD** : For a period of six months from the date of Sale / delivery of the product which ever is earlier. 2. **LIMITED WARRANTY OBLIGATION** : Replacement of defective part(s) by authorized dealer are free of charges. If found defective by reasons of defective material / poor workmanship, parts will be replaced and there will be no value re-imburement. 3. **TERMS & CONDITIONS** : a. Claims under warranty will be accepted on submission of Warranty Card duly filled and stamped by authorized dealer together with the original purchase document. : b. Shipping / transportation / Incidental charges incurred in replacing defective parts under warranty shall be borne by the purchaser.

**WARRANTY null & void if**

- (i) Lack of maintenance, (ii) Incorrect use of the machine or tampering, (iii) Use of non-genuine spare parts, (iv) Usage of acids, solvents, or any flammable materials, (v) Non-usage of filter water / clear water / soft water & using water above 40°C temperature, (vi) While using the pressure washers to draw water which is contaminated with dust & solvents (eg. paint thinners, gasoline, oil, etc.), (vii) Repair done by unauthorized service people, (viii) Those parts subject to wear & tear due to normal operations and plastic parts, rubber items etc, (ix) Loose connections, faulty electrical fixtures & fluctuations in power supply.
4. Should any failure occur during or after the warranty period, customer does not have the right to interrupt payment / price discount.
5. Incidental or consequential damages like inconvenience commercial loss, loss of tie, mental agony etc.
6. Loss of any nature due to operation or non-operation is not covered under warranty.
7. All free service are at Dealer's service point only.
8. Warranty ceases if service is not done periodically.
9. The attached card should be completed and returned to Ratnagiri Impex Pvt. Ltd. for registration immediately after sale / delivery.
10. The warranty is void unless you register the warranty card with Ratnagiri Impex Pvt. Ltd.
11. The decision of Ratnagiri Impex Pvt. Ltd., in settling the warranty is final in all respects.
12. All disputes are subject to Bangalore Courts Jurisdiction

1. **LIMITED WARRANTY PERIOD** : For a period of six months from the date of Sale / delivery of the product which ever is earlier. 2. **LIMITED WARRANTY OBLIGATION** : Replacement of defective part(s) by authorized dealer are free of charges. If found defective by reasons of defective material / poor workmanship, parts will be replaced and there will be no value re-imburement. 3. **TERMS & CONDITIONS** : a. Claims under warranty will be accepted on submission of Warranty Card duly filled and stamped by authorized dealer together with the original purchase document. : b. Shipping / transportation / Incidental charges incurred in replacing defective parts under warranty shall be borne by the purchaser.

**WARRANTY null & void if**

- (i) Lack of maintenance, (ii) Incorrect use of the machine or tampering, (iii) Use of non-genuine spare parts, (iv) Usage of acids, solvents, or any flammable materials, (v) Non-usage of filter water / clear water / soft water & using water above 40°C temperature, (vi) While using the pressure washers to draw water which is contaminated with dust & solvents (eg. paint thinners, gasoline, oil, etc.), (vii) Repair done by unauthorized service people, (viii) Those parts subject to wear & tear due to normal operations and plastic parts, rubber items etc, (ix) Loose connections, faulty electrical fixtures & fluctuations in power supply.
4. Should any failure occur during or after the warranty period, customer does not have the right to interrupt payment / price discount.
5. Incidental or consequential damages like inconvenience commercial loss, loss of tie, mental agony etc.
6. Loss of any nature due to operation or non-operation is not covered under warranty.
7. All free service are at Dealer's service point only.
8. Warranty ceases if service is not done periodically.
9. The attached card should be completed and returned to Ratnagiri Impex Pvt. Ltd. for registration immediately after sale / delivery.
10. The warranty is void unless you register the warranty card with Ratnagiri Impex Pvt. Ltd.
11. The decision of Ratnagiri Impex Pvt. Ltd., in settling the warranty is final in all respects.
12. All disputes are subject to Bangalore Courts Jurisdiction

1. **LIMITED WARRANTY PERIOD** : For a period of six months from the date of Sale / delivery of the product which ever is earlier. 2. **LIMITED WARRANTY OBLIGATION** : Replacement of defective part(s) by authorized dealer are free of charges. If found defective by reasons of defective material / poor workmanship, parts will be replaced and there will be no value re-imburement. 3. **TERMS & CONDITIONS** : a. Claims under warranty will be accepted on submission of Warranty Card duly filled and stamped by authorized dealer together with the original purchase document. : b. Shipping / transportation / Incidental charges incurred in replacing defective parts under warranty shall be borne by the purchaser.

**WARRANTY null & void if**

- (i) Lack of maintenance, (ii) Incorrect use of the machine or tampering, (iii) Use of non-genuine spare parts, (iv) Usage of acids, solvents, or any flammable materials, (v) Non-usage of filter water / clear water / soft water & using water above 40°C temperature, (vi) While using the pressure washers to draw water which is contaminated with dust & solvents (eg. paint thinners, gasoline, oil, etc.), (vii) Repair done by unauthorized service people, (viii) Those parts subject to wear & tear due to normal operations and plastic parts, rubber items etc, (ix) Loose connections, faulty electrical fixtures & fluctuations in power supply.
4. Should any failure occur during or after the warranty period, customer does not have the right to interrupt payment / price discount.
5. Incidental or consequential damages like inconvenience commercial loss, loss of tie, mental agony etc.
6. Loss of any nature due to operation or non-operation is not covered under warranty.
7. All free service are at Dealer's service point only.
8. Warranty ceases if service is not done periodically.
9. The attached card should be completed and returned to Ratnagiri Impex Pvt. Ltd. for registration immediately after sale / delivery.
10. The warranty is void unless you register the warranty card with Ratnagiri Impex Pvt. Ltd.
11. The decision of Ratnagiri Impex Pvt. Ltd., in settling the warranty is final in all respects.
12. All disputes are subject to Bangalore Courts Jurisdiction





ratnagiri impex  
BRINGING YOU THE FUTURE TODAY

### 1st Free Service Coupon

ISO 9001-2015  
CERTIFIED COMPANY

FREE SERVICE COUPON (30 Days / 20 hrs (Which ever is earlier))

Model  
AM-P768-PRO Portable Power Sprayer

Serial Number

PDI Date

Purchase bill no.

Date

Service No.

Dealer's Office Seal

Dealer Signature.....

Customer Signature.....

Conditions: Operations listed have been performed to my entire satisfaction without any labour charges. Only consumables were charged.



agriculture | horticulture | sericulture | plantations | forestry | garden | health care

WARRANTY AND FREE SERVICE COUPON



ratnagiri impex  
BRINGING YOU THE FUTURE TODAY

### 2nd Free Service Coupon

ISO 9001-2015  
CERTIFIED COMPANY

FREE SERVICE COUPON (30 Days / 20 hrs (Which ever is earlier))

Model  
AM-P768-PRO Portable Power Sprayer

Serial Number

PDI Date

Purchase bill no.

Date

Service No.

Dealer's Office Seal

Dealer Signature.....

Customer Signature.....

Conditions: Operations listed have been performed to my entire satisfaction without any labour charges. Only consumables were charged.



agriculture | horticulture | sericulture | plantations | forestry | garden | health care

WARRANTY AND FREE SERVICE COUPON



ratnagiri impex  
BRINGING YOU THE FUTURE TODAY

### 3rd Free Service Coupon

ISO 9001-2015  
CERTIFIED COMPANY

FREE SERVICE COUPON (30 Days / 20 hrs (Which ever is earlier))

Model  
AM-P768-PRO Portable Power Sprayer

Serial Number

PDI Date

Purchase bill no.

Date

Service No.

Dealer's Office Seal

Dealer Signature.....

Customer Signature.....

Conditions: Operations listed have been performed to my entire satisfaction without any labour charges. Only consumables were charged.



agriculture | horticulture | sericulture | plantations | forestry | garden | health care

WARRANTY AND FREE SERVICE COUPON



Small Maintenance. Big Savings.



Small Maintenance. Big Savings.



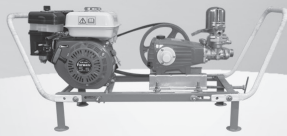
Small Maintenance. Big Savings.

# Do's & Don'ts

- Always read the instruction manual supplied along with the equipments and understand the correct installation and operating procedures before attempting to use the equipments.
- It is important to use the personal protection equipments such as head helmet with visor, ear defenders, goggles, safety gloves, cut resistant shoes, trousers and jackets while operating potentially dangerous machines.
- Avoid untrained persons using the equipments. Children must not be allowed to handle these equipments.
- Always use genuine spares and accessories in repairs and usage to derive maximum life of the equipments.
- Always keep the equipments in good working condition to minimise loss of output as well as to reduce the pollution and save the environment.
- Do not use the machine within range of persons unless they wear protective clothing.
- Do not operate the machine when fatigued or under the influence of alcohol or drugs.
- When the machine is running, please maintain a constant water supply. Without water circulation will damage the sealing rings of the machine.
- For more query kindly contact for our Service Center/Dealer/ franchise

# Agrimate Army For Pest Control

ANY WHERE - ANY TIME - ANY CROP



  
**AGRIMATE**<sup>®</sup>  
Maximum Power - Super Economy

RATNAGIRI IMPEX PVT LTD  
Annapurna House, #1/1G, 7th Cross, New Guddadahalli  
Mysore Road, Bangalore-560 026  
Customer Care: 1800 425 3036  
email: info@ratnagiriimpex.com



 **ratnagiri**<sup>®</sup>  
**impex**  
BRINGING YOU THE FUTURE... NOW

www.ratnagiriimpex.com

AN ISO 9001:2015 CERTIFIED COMPANY