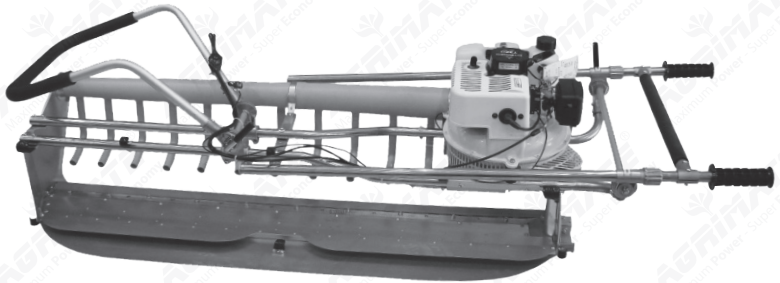


# AMTH-2M-320 TWO-MEN HARVESTER



**DISCLAIMER:** DUE TO CONSTANT UPGRADATION, FEATURES AND SPECIFICATIONS ARE SUBJECT TO CHANGE WITHOUT NOTICE



**BEFORE OPERATING THIS APPLIANCE  
PLEASE READ THESE INSTRUCTIONS CAREFULLY**

## PREFACE

Thank you for your purchase and use of our products. In order to avoid accidents or injury, please read this instruction and the instruction of gasoline engine carefully before using. After reading, Please keep the instruction carefully for further reference.

## INSTRUCTION TO OPERATOR

1. The man who borrows this machine or is unfamiliar on its operation shall accept safety guidance before operation.
2. The following persons are not allowed to use this machine:  
(1) the drunk,                      (2) mental Patient,                      (3) children, pregnant woman, &  
(4) the man who is unable to make operation due to excessive fatigue, disease, or medicine allergy.

## OPERATOR'S APPAREL

1. Please wear long sleeve clothing and long trousers, not wear wide-sleeve clothing or wide trousers
2. Wear brimmed cap and protection glasses
3. Wear gloves during inspection and maintenance
4. Wear anti-slip shoes.

## NO FIRING OR SMOKING

1. Do not store the fuel at place liable to fire.
2. Do not smoke when starting the engine or replenishing oil.
3. Stop the engine when replenishing oil. In case of turning over of machine or spattering fuel on to machine body, please wipe out the fuel on the machine body with dry cloth.

## PRECAUTION BEFORE OPERATION

1. Before operation make inspection and necessary adjustment, and apply for repair in case of abnormalities, please relegate to the mono polistic store to repair.
2. Inspections before operation

*Notes: (1) Conducting after stopping of the gasoline engine,  
(2) conducting after cooling down of the gasoline engine.*

Location	Check Content	Correction
Appearance	Wearing - out or loosing	Reinforcing or replacing fasteners
Fasteners	Loosing	Replenishing every 20 to 30 hours
Gearbox	sufficient grease	Replacing components
Blades	Rounding, breaking or deformation of blades	
	lubricating of blades	Lubricating
Air Filter	contamination	Cleaning
Oil tank	Sufficient fuel and loosing of tank cover	Replenishing or reinforcing
Dual-purpose switch	Smooth operation	Adjusting or replacing components
Switch of gasoline engine	proper on/off operation	Replacing components
Blade adjusting nut	proper adjustment of gap between blades	Adjusting
Handle	proper fixation of handle	Adjusting

### WHILE STARTING

1. Not too close to the surroundings
2. When pulling the start rope, stand clear of the blade edge.

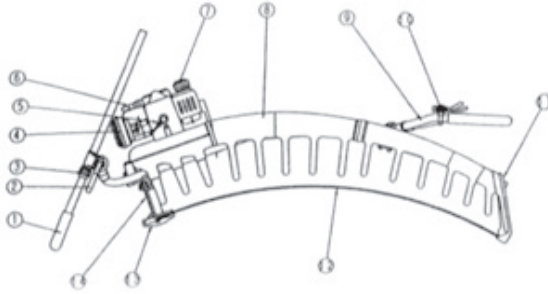
### NOTES DURING OPERATION

1. During operating, hold the handle and keep a free posture
2. During operation, keep away from other persons
3. Special stress on safe operation on slipper ground in case of raining.
4. In case of seizure of blades by tree branches or twigs, please immediately stop the gasoline engine and take out the foreign matters
5. Do not run the machine in a reverse way.
6. For termination of operation, please stop the gasoline engine and place cover on the blade.
7. For movement, even in a short distance, please also stop the gasoline engine and place cover on the blade.

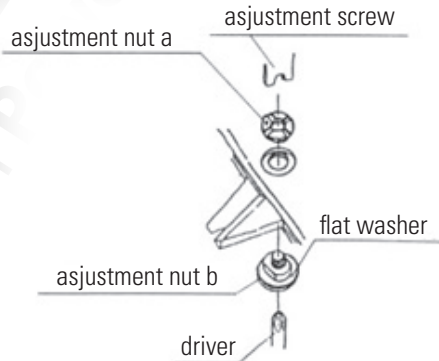
## MAINTENANCE

1. Do not repair or disassemble the machine by unauthorized person
2. In case of abnormalities found during maintenance, please eliminate the troubles before use.
3. Do not arbitrarily modify the machine or use parts other than ours

## PARTS OF MACHINE



- (1) Handle on the side of gasoline engine
- (2) Operation switch
- (3) Slide nut
- (4) Air Filter
- (5) Spark Plug
- (6) Starter
- (7) Oil tank cover
- (8) Air Feed duct
- (9) Handle on the side of cutter
- (10) Dual - purpose switch
- (11) Plate on the side of cutter
- (12) Blades: Notes: Blades shall be fixed with covers
- (13) Crank box
- (14) Side place on the side of gasoline engine





# EXPLANATION ON OPERATION

## 1. Adjustment of gap between blades

\* Adjusting the nuts with blade

1. Loosen the high speed nut (a) on the adjustment washer.
2. Fully tighten the adjustment screw (b) with a driver
3. Backwards rotate the adjustment screw (b) for  $\frac{1}{2}$  to  $\frac{3}{4}$  revolution (1800 to 2700)
4. Keep the driver under this state and tighten adjustment nut (a) with a screw

The flat washer © shall keep little gap. In case of large gap. Please return to operation (1) and make adjustment to reduce the retraction (3). In case of small gap, please return to operation(1) and make adjustment to increase the retraction(3)

5. Start both the gasoline engine and the blades to confirm no abnormalities.

**NOTE:** *In case of abnormal sound or vibration, or poor cutting mark during operation, please contact the Dealer*

## 2. Fuel and oil-replenishing

- Danger: Be careful in operation of fuel
- Danger: No fire, especially no smoking during oil replenishing
- Danger: Fill the fuel in special containers and store them in a fire – free safe place

**Note:** *In case of fuel contact eyes, please immediately wash eyes with plenty of water. If still feel pain, please consult doctor.*

## FUEL:

For this machine the mixture of 90# common car gasoline and two stroke purpose machine oil is used.

Mixing ratio (by volume) gasoline-two stroke purpose (JASO FB Grade) machine Oil 25:1

- Deteriorated fuel or fuel at incorrect mixing ration shall not be used, or operation would be abnormal.
- Do not use machine oil other than two stroke purpose machine oil.

## OIL REPLENISHING

1. Replenishing oil after stopping and cooling down of the gasoline engine.
2. Replenishing oil in well-ventilated place or outdoors.
3. Cleaning the oil tank cover to prevent foreign matter from entering.
4. Slowly and carefully remove the oil tank cover to avoid blowing out of fuel due to increase of pressure inside the tank.
5. Wiping the overflowed oil with dry cloth.
6. Carefully fill the oil to avoid overflow.
7. Fill the oil to Can 80% of tank capacity otherwise oil would leak and start would become difficult.
8. Tightening the oil tank cover.
9. After oil replenishing, re start the gasoline engine at least 3m away from the ground.



Fill the oil to can 80% of tank capacity



blade cover

**3. Functions and adjustment of each unit Blades.**  
Blade consist of the upper and the lower blade and their reciprocating movement cuts off the clamped matters

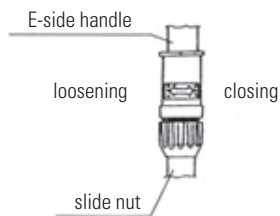
- **Danger:**

The blades are very sharp and especially the moving blades shall not be touched or faced against person.

The handle on gasoline engine side (e-side handle) is fixed with anti vibration rubber

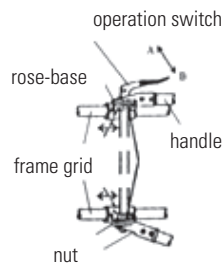
- **Adjustment of slide nut**

When the nut is rotated in "loosening" direction E-side handle is adjusted to an easy operation position. After this adjustment return the slide nut at "closing" position and then tighten it.



- **Adjustment of operation switch**

It is used to adjust the angle of the E-side and the cutting - side handle. and to slide the cutting side handle For Loosening, Trun The Switch Fixed On The Handle. In direction A.



After adjustment to proper position, turn the switch in direction B to fix the adjusted position.

### • Operation of dual - purpose switch

It is fixed on cutting side handle.

The upper switch is a tensioning cord switch to control movement and stopping of blades and the lower one is a throttle switch to control the speed of gasoline engine.

### • Gasoline Engine switch

Stop switch at gasoline side: It is a button switch for stopping the gasoline engine.

Stop switch at cutting side handle. When it is set "OFF" side, the gasoline engine will be stopped. At that position, even pressing the starter will not start the machine.

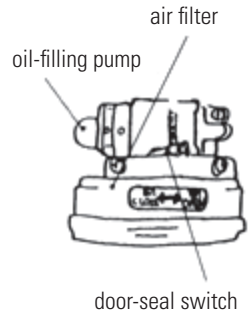
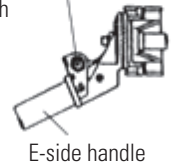
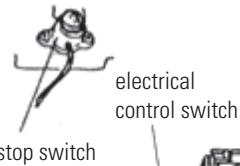
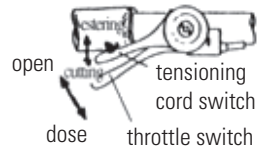
### • Start Procedures

1. Checking the tensioning cord switch for being set at position "closing"
2. Pressing the Oil filling pump for 3 to 4 times
3. Setting the door seal switch at the full closed position, and setting it at the full - opened position when the gasoline engine becomes hot.
4. Setting the throttle switch at an intermediate position (Between full opened the position and the full closed position)
5. Setting the stop switch at the cutting side handle at "ON" position
6. Manually pulling the starter
7. After starting, observing the gasoline engine, slowly setting the door seal switch at the full - opened position (OPEN) and at restarting (while the gasoline engine is still hot) setting the door seal switch at the full closed position.

### 5. Stopping Procedures

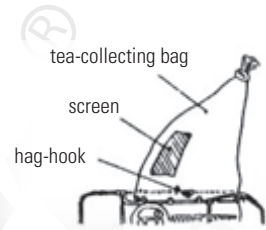
Setting the throttle switch at full closed position

Setting the gasoline switch at the cutting - side handle at "OFF" position.

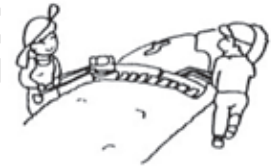


### (III) Notes for tea plucking Procedures for tea plucking

1. Setting the handle at easy operating position
  2. Fixing the tea-collecting bag on bag-hooks of the machine, & slightly moving the screen from machine center towards gasoline side.
- Note: Please use our genuine tea - collecting bags.
3. Removing blade covers
  4. During refueling, please oil the blades to avoid wearing out.
  5. Starting the gasoline engine in the start sequences
  6. During operation, holding the E side and cutting side handle with hands.
  7. Slowly setting the throttle switch (lower) of the dual purpose switch at position " open " to increase the speed of gasoline engine and adjust the air speed and setting the tensioning cord switch (Upper) at position " entering " to drive the blades make reciprocating movement.



8. Adjusting the speed of gasoline engine according to the operators running speed, cutting mark & tea collecting conditions, generally setting at a full opened position (high speed) for wet tea.
9. Plucking the tea leaves in the field from one side to another. Slow speed on the gasoline engine side to another. Slow speed on the gasoline engine side facilitating smooth operation.



#### Notes

- (I) In case of interruption due to directional changeover, please surely set the dual purpose switch at full - closed position to completely stop blades before restart the machine.
- (II) For interruption or termination of operation
- (III) Please stop the gasoline engine and put the blade covers.

#### • Warning

During operation, in case of abnormal vibration due to seizure of blades by foreign matters such as tree twigs, please set the throttle switch at position " low speed " and the switch of gasoline engine at position " OFF " to completely stop gasoline engine, move the machine to a safe place and make inspection and treatment. In case of abnormal conditions, please immediately stop use and have it repaired at authorized dealers. Removing foreign matters during operation of

gasoline engine is very advantageous.

### After termination of operation

Notes:

1. Before cleaning, please stop the gasoline engine
2. Cover the machine with waterproof fabric after cooling down of the gasoline engine.

### Handling:

Fix the gasoline to prevent it from dropping

### Maintenance of machine:

1. Remove soils and grasses from the blades and then oil the blades
2. Check each component, and make adjustment, if necessary

### For Long term Shutdown:

1. Repair the abnormal parts
2. Before long term storage, discharge fuel after cooling down the gasoline engine.  
Remove the filter from the oil tank and press the oil filling pump several times to return the residual oil in pipeline to the oil tank and pump out all oils from the tank.
3. Take out spark plug, fill drops of machine oil into the hole, slightly pull the starter to oil the inside of gasoline engine, and replace the spark plug.
4. Wipe out external fouling and keep the machine in a dry place.

### • Regular inspection:

Before operation, please conduct 'pre operation' inspection and regular inspection.

- Danger: make oil filling, inspection and repair in a flat and safe place.

Notes:

- (1) For avoiding abrupt starting of gasoline engine, please make inspection after stopping and cooling down the gasoline engine and removal of spark cup.
- (2) Apply the authorized dealer for necessary inspection, repair, adjustment and replacement.



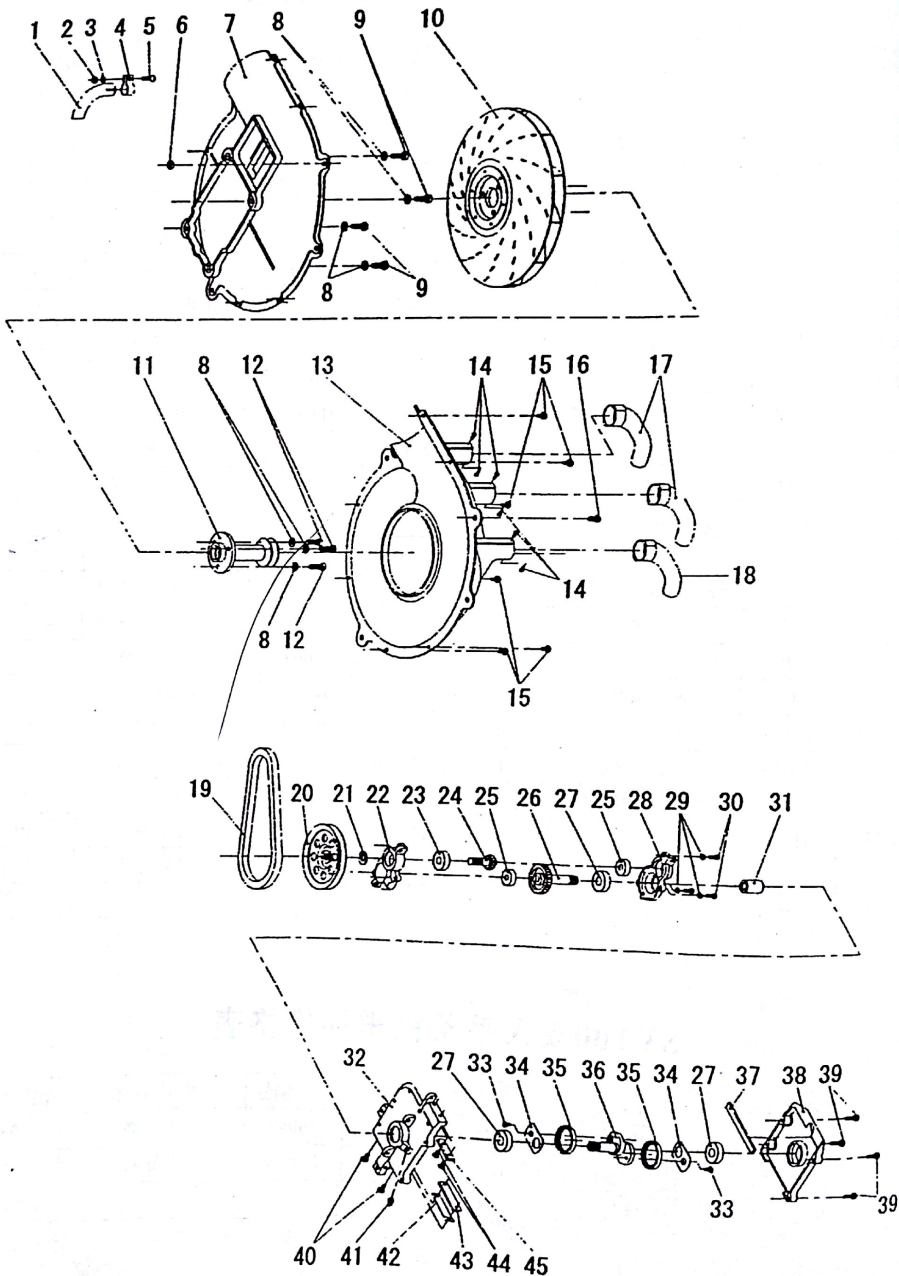
## PERIODICAL CHECKING

ITEM	CONTENT	
Oil-filling	Gear Box	Fill grease from the nipples every 20 to 30 hours.
Inspection	Throttle cord Tensioning cord	Check for proper function, make adjustment, and replace the damaged one
Cleaning	Air Filter (sponge) Spark Plug	Every 50 running hours: cleaning with white lamp oil-drying-filling gasoline-cleaning. Every 150 running hours: make sweeping and replacement(if necessary)
Replacement	Oil tank	Every 3 months, completely empty the oil tank to ensure no entrance of dust
	Carburetor	Every 3 months, take out the carburetor and replace a new one
	Blades	Sharpen the rounded or damaged blades and replace the broken blade
	V-Belt (specification M19)	In case of wearing out or damage of the blade driving belt, immediately make replacement in the authorized dealer

## DATA OF GASOLINE ENGINE / GP520

Model	Mitsubishi T320
Total displacement(cc)	46
Fuel	Mixed gasoline 25:1 to 20:1
Capacity of oil tank(L)	1.4

# DIAGRAM OF BLOWER TWO-MEN TEA HARVESTER

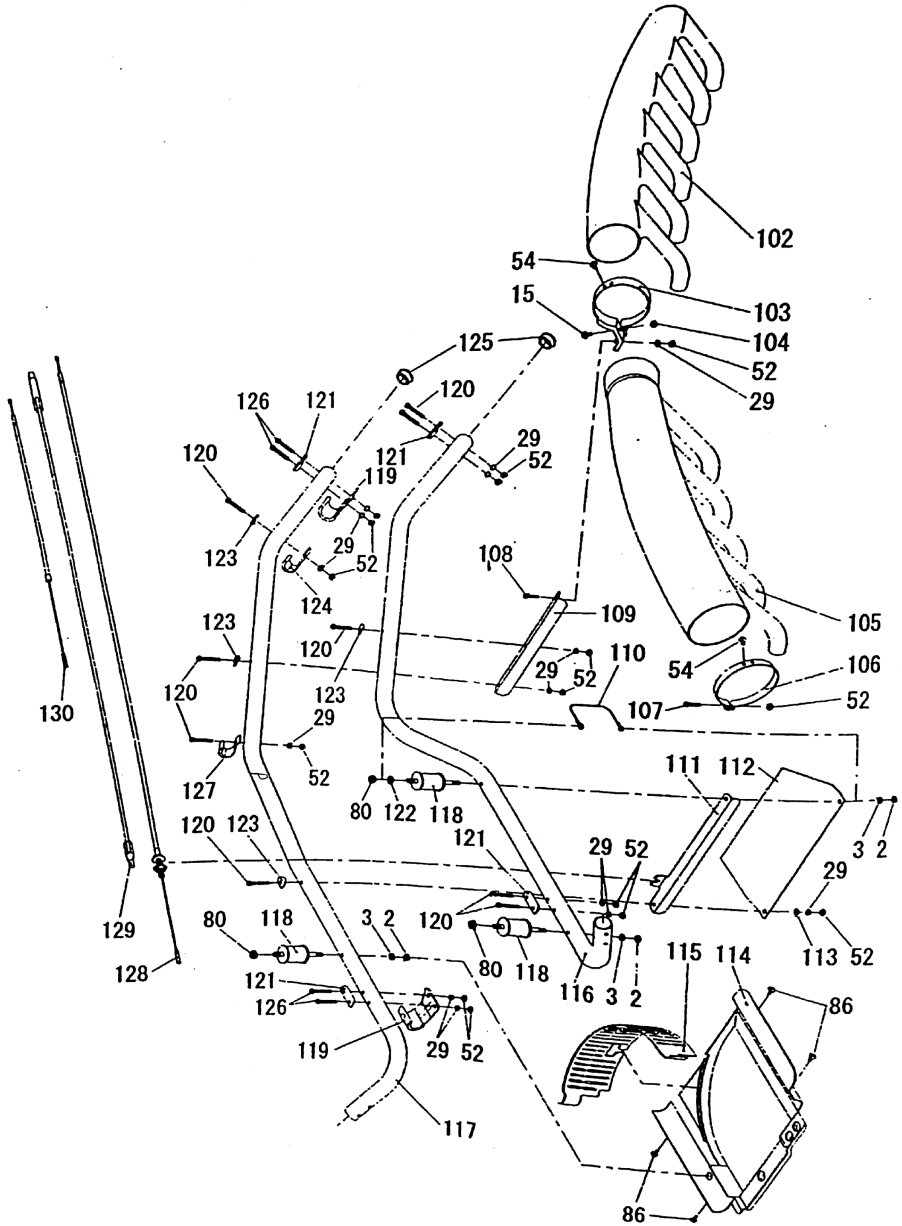




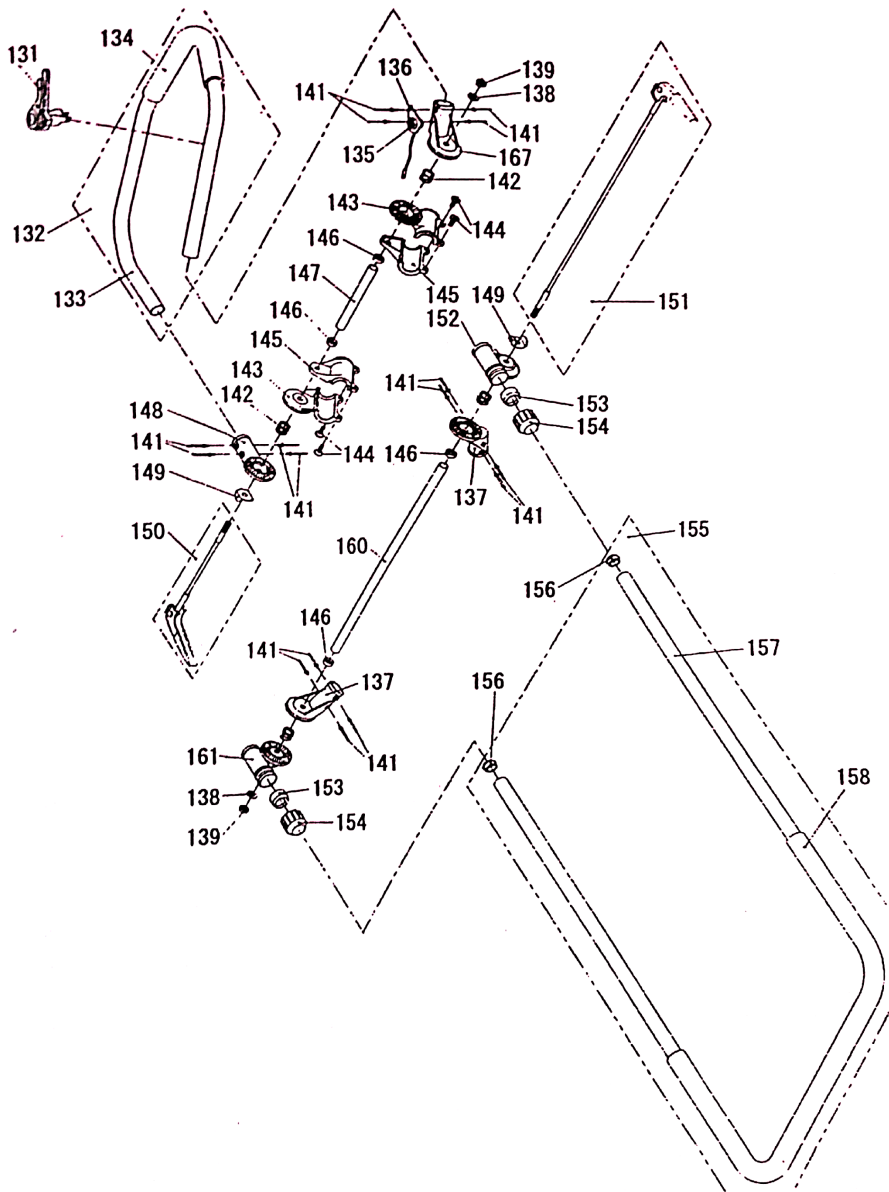




# DIAGRAM OF BLOWER TWO-MEN TEA HARVESTER



# DIAGRAM OF BLOWER TWO-MEN TEA HARVESTER



## PART LIST OF AMTH-2M BLOWER ASSEMBLY

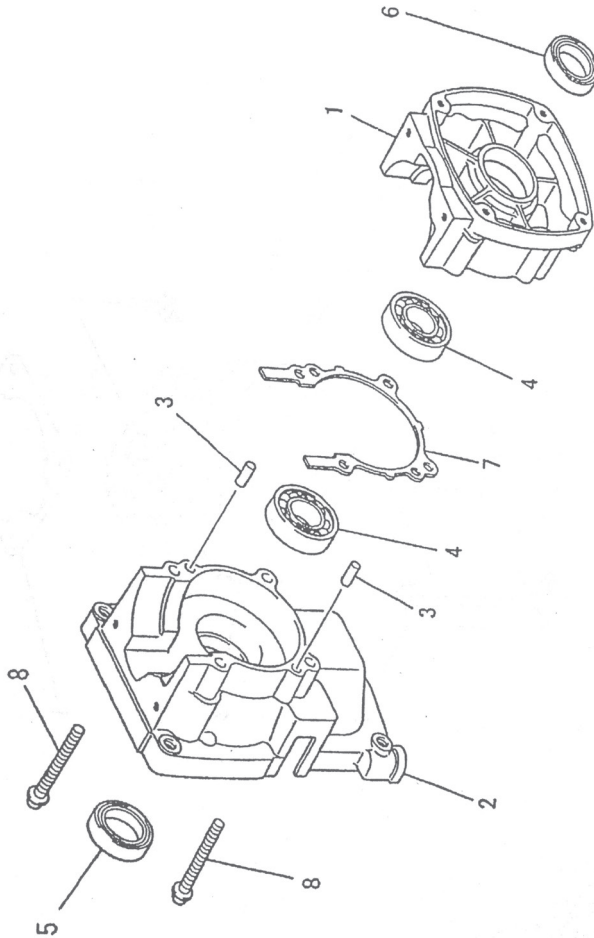
PART NO.	PART NAME	PART NO.	PART NAME
AMTH-2M-B6	Thin hexagonal nut M6	AMTH-2M-B32	Crank Box (upper)
AMTH-2M-B7	Fan Guard (internal)	AMTH-2M-B33	Sunk -head screw-M4X6
AMTH-2M-B8	Washer M6	AMTH-2M-B34	Roller press-plate
AMTH-2M-B9	External hexagonal bolt M6x 18	AMTH-2M-B35	Roller bearing
AMTH-2M-B10	Fan	AMTH-2M-B36	Cam
AMTH-2M-B11	Small Pulley	AMTH-2M-B37	Felt
AMTH-2M-B12	Internal hexagonal screw M6x20	AMTH-2M-B38	Crank box (lower)
AMTH-2M-B13	Fan guard (external)	AMTH-2M-B39	External hexagonal bolt M4X20
AMTH-2M-B14	Self-tapping screw M4x6	AMTH-2M-B40	External hexagonal bolt M4X6
AMTH-2M-B15	Cross large round head screw M4x8	AMTH-2M-B41	Grease nipple M6
AMTH-2M-B16	Screw M6x12	AMTH-2M-B42	Lining pad of guide plate crank box
AMTH-2M-B17	Blowing out cylinder 1	AMTH-2M-B43	Guide plate crank box
AMTH-2M-B18	Blowing out cylinder 2	AMTH-2M-B44	
AMTH-2M-B19	V-belt M19	AMTH-2M-B45	
AMTH-2M-B20	Large pulley	AMTH-2M-B46	Cross large round head screw M5x20
AMTH-2M-B21	Flat washer	AMTH-2M-B47	Cross large round-head screw M5x15
AMTH-2M-B22	Gear Box (upper)	AMTH-2M-B48	Flange of frame
AMTH-2M-B23	Bearing 6000ZZ	AMTH-2M-B49	Cutting -side plate
AMTH-2M-B24	Small Gear	AMTH-2M-B50	Rubber cover
AMTH-2M-B25	Bearing 608ZZ	AMTH-2M-B51	Self-plugging rivet
AMTH-2M-B26	Large gear	AMTH-2M-B52	Hexagonal nut M4
AMTH-2M-B27	Bearing 6001ZZ	AMTH-2M-B53	Bracket of air-feed duct
AMTH-2M-B28	Gear box (lower)	AMTH-2M-B54	Self-tapping screw M4x8
AMTH-2M-B29	Washer M4	AMTH-2M-B55	Flat Washer M3
AMTH-2M-B30	Screw M4x12	AMTH-2M-B56	Screw M4x8
AMTH-2M-B31	Coupler		

PART NO.	PART NAME	PART NO.	PART NAME
AMTH-2M-B57	Screw M4x10	AMTH-2M-B85	Screw M5x8
AMTH-2M-B58	Bag hook (right)	AMTH-2M-B86	Screw M5x10
AMTH-2M-B59	Cross round -head screw M4x10	AMTH-2M-B87	Slotted self tapping Screw M4x8
AMTH-2M-B60	Blade edge press-piece	AMTH-2M-B88	Belt guar
AMTH-2M-B61		AMTH-2M-B89	E-side plate
AMTH-2M-B62	Upper Blade	AMTH-2M-B90	External hexagonal
AMTH-2M-B63	Lower Blade	AMTH-2M-B91	bolt M6x15 Flat Washer
AMTH-2M-B64	Blade Cover	AMTH-2M-B92	Tensioning pull-rod
AMTH-2M-B65		AMTH-2M-B93	Tensioning spring
AMTH-2M-B66	Blade adjustment nut	AMTH-2M-B94	Tensioning bracket
AMTH-2M-B67	Blade adjustment slide	AMTH-2M-B95	
AMTH-2M-B68	Blade adjustment washer	AMTH-2M-B96	Tensioning roller
AMTH-2M-B69	Blade adjustment screw	AMTH-2M-B97	Bearing 626ZZ
AMTH-2M-B70	Screw M6x18	AMTH-2M-B98	Fixing spring clip CS-19
AMTH-2M-B71	Sunk-head screw M5x8	AMTH-2M-B99	External hexagonal bolt M6x16
AMTH-2M-B72	Bag hook (base plate)	AMTH-2M-B100	Guide Plate (internal)
AMTH-2M-B73	Vane plate	AMTH-2M-B101	
AMTH-2M-B74	Reinforcing rib	AMTH-2M-B102	Cutting-side air-feed duct
AMTH-2M-B75	Ribbed guide plate	AMTH-2M-B103	Fixing ring 2 of air-feed duct
AMTH-2M-B76	Spacing Plate	AMTH-2M-B104	Nut M4
AMTH-2M-B77	Self-plugging rivet	AMTH-2M-B105	E-side air feed duct
AMTH-2M-B78	Self-plugging rivet	AMTH-2M-B106	Fixing ring 1 of air-feed duct
AMTH-2M-B79	Screw M4x15	AMTH-2M-B107	Screw M4x16
AMTH-2M-B80	Thin self-locking nutM6	AMTH-2M-B108	Screw M4x14
AMTH-2M-B81	Belt press-rod1	AMTH-2M-B109	Reinforcing angle 1
AMTH-2M-B82	Belt press-rod2	AMTH-2M-B110	Earth Wire
AMTH-2M-B83	External hexagonal bolt M6x12		
AMTH-2M-B84	Guide Plate (external)		

PART NO.	PART NAME
AMTH-2M-B111	Reinforcing angle 2
AMTH-2M-B112	Transparent plate
AMTH-2M-B113	Flat Washer M4
AMTH-2M-B114	Bottom Cover
AMTH-2M-B115	Side Cover
AMTH-2M-B116	Frame gird (front)
AMTH-2M-B117	Frame gird (rear)
AMTH-2M-B118	Anti-vibration rubber Screw
AMTH-2M-B119	Bag hook (left)
AMTH-2M-B120	Screw M4x30
AMTH-2M-B121	R washer (long)
AMTH-2M-B122	Inner-toothed spring washer M6
AMTH-2M-B123	R washer
AMTH-2M-B124	
AMTH-2M-B125	Bottom cover of frame gird
AMTH-2M-B126	Screw M4x32
AMTH-2M-B127	Bag Hook (middle)
AMTH-2M-B128	Tensioning cord
AMTH-2M-B129	Switch cord
AMTH-2M-B130	Throttle cord
AMTH-2M-B131	Dual-Purpose switch
AMTH-2M-B132	
AMTH-2M-B133	Cutting side handle
AMTH-2M-B134	Cutting side anti vibration rubber handle cover
AMTH-2M-B135	Electrical Switch
AMTH-2M-B136	Electrical socket
AMTH-2M-B137	Rose-base 7

PART NO.	PART NAME
AMTH-2M-B138	Flat washer M8
AMTH-2M-B139	Thin self-locking nut M8
AMTH-2M-B140	Screw M5x35
AMTH-2M-B141	Screw M5x32
AMTH-2M-B142	Rose -base spring
AMTH-2M-B143	Cutting-model rose-base
AMTH-2M-B144	
AMTH-2M-B145	Cutting model rose base pad
AMTH-2M-B146	operation sleeve cover
AMTH-2M-B147	operation sleeve (cutting side)
AMTH-2M-B148	Rose-base 1
AMTH-2M-B149	curved-mold pad
AMTH-2M-B150	Cutting-side operation shaft set
AMTH-2M-B151	E-side operation shaft set
AMTH-2M-B152	Rose-base (right)
AMTH-2M-B153	Split pin ring
AMTH-2M-B154	Slide nut
AMTH-2M-B155	
AMTH-2M-B156	E-side handle cover
AMTH-2M-B157	E-side handle
AMTH-2M-B158	E-sdie anti -vibration rubber handle cover
AMTH-2M-B159	Rose-base spring
AMTH-2M-B160	Operation sleeve (E-side)
AMTH-2M-B161	Rose-base (left)
AMTH-2M-B162	Washer M5
AMTH-2M-B163	Nut M5

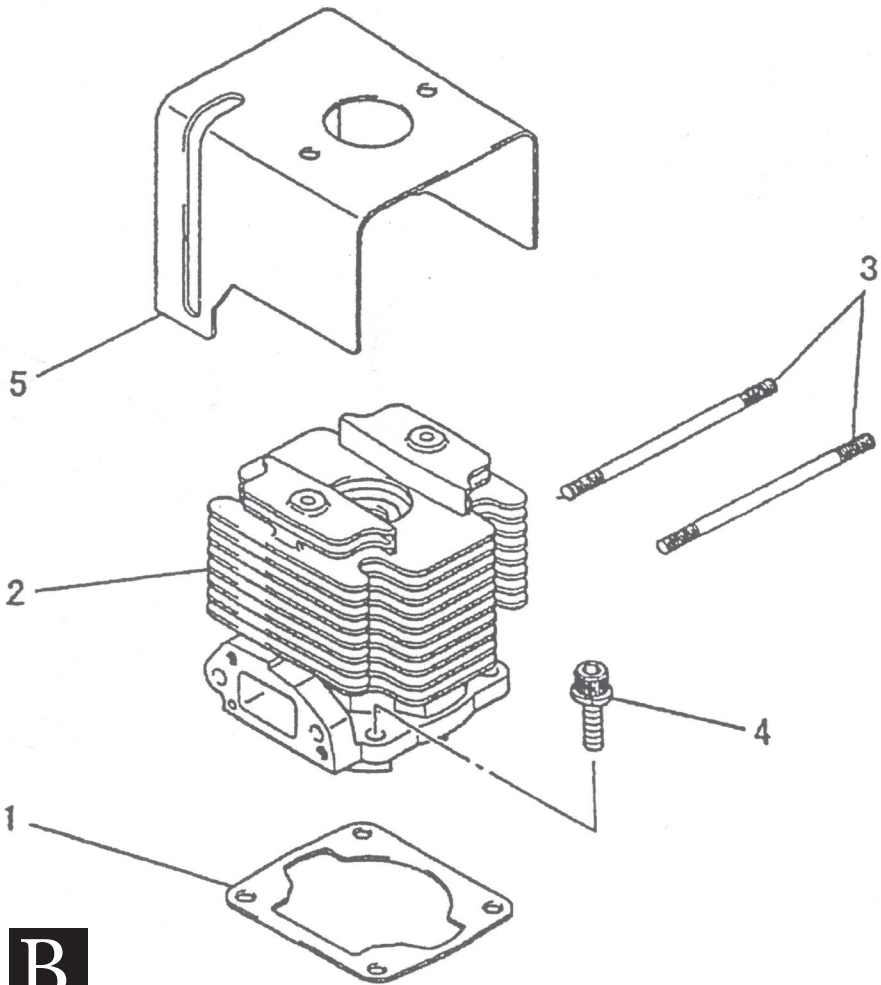
## DIAGRAM OF ENGINE TWO-MEN TEA HARVESTER



A

PART NO. RIPL	PART NO.	PART NAME	MOQ
AMTH-2M-E1 A	1896891	Case Starter	1
AMTH-2M-E2 A	1896892	Case Drive	1
AMTH-2M-E3 A	1894478	Pin Dowel	2
AMTH-2M-E4 A	1894672	Bearing Ball	2
AMTH-2M-E5 A	1894344	Oil Seal	1
AMTH-2M-E6 A	1896494	Oil Seal	1
AMTH-2M-E7 A	1896493	Gasket Crankcase	1
AMTH-2M-E8 A	1894457	Screw & Washer	4

## DIAGRAM OF ENGINE TWO-MEN TEA HARVESTER

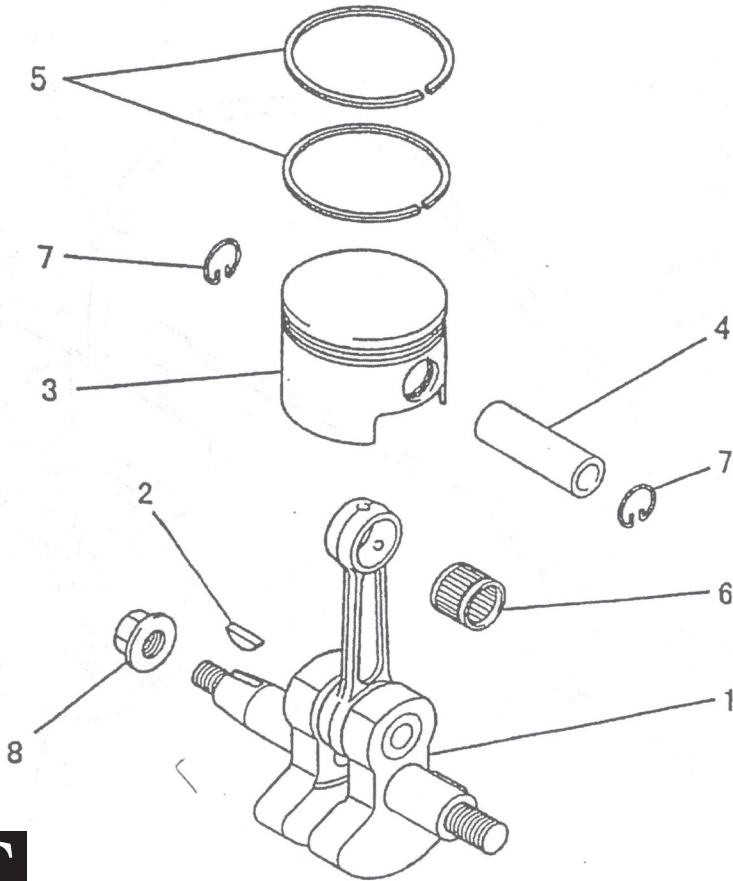


**B**

PART NO. RIPL	PART NO	PART NAME	MOQ
AMTH-2M-E1 B	1896433	Gasket Cylinder	1
AMTH-2M-E2 B	1896430	Cylinder	1
AMTH-2M-E3 B	1896625	Bolt Stud	2
AMTH-2M-E4 B	1897504	Bolt Washer	4
AMTH-2M-E5 B	1896999	Cover Cylinder	1



## DIAGRAM OF ENGINE TWO-MEN TEA HARVESTER

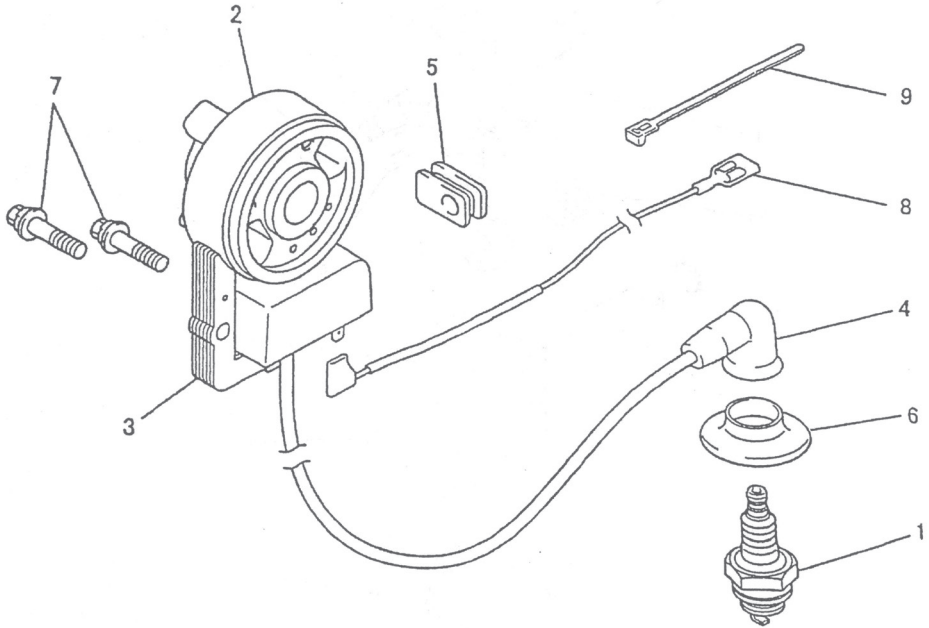


C

PART NO. RIPL	PART NO	PART NAME	MOQ
AMTH-2M-E1 C	1896047	Crankshaft Assy.	1
AMTH-2M-E2 C	1894583	Key Woodruff	1
AMTH-2M-E3 C	1896435	Piston	1
AMTH-2M-E4 C	1896469	Pin Piston	1
AMTH-2M-E5 C	1896434	Ring Top	2
AMTH-2M-E6 C	1896444	Bearing Needle	1
AMTH-2M-E7 C	1894187	Clip Piston Pin	2
AMTH-2M-E8 C	1894586	Nut Conical SPG	1



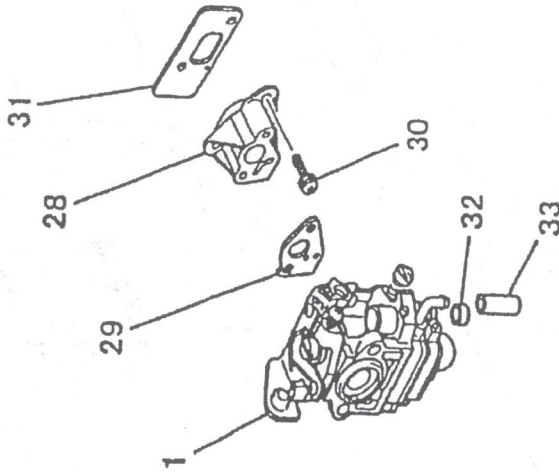
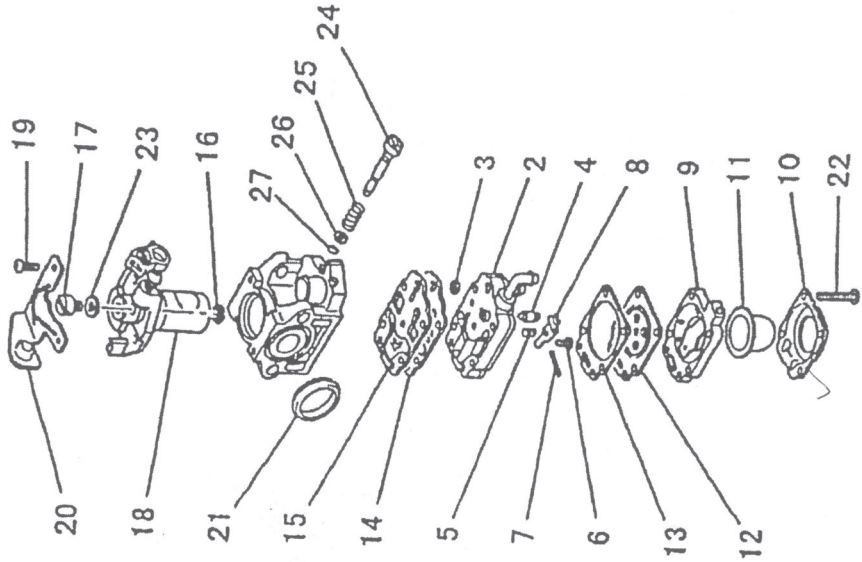
## DIAGRAM OF ENGINE TWO-MEN TEA HARVESTER



# D

PART NO. RIPL	PART NO	PART NAME	MOQ
AMTH-2M-E1 D	1896444	Plug Spark	1
AMTH-2M-E2 D	1896787	Rotor	1
AMTH-2M-E3 D	1896603	Coil Ignition	1
AMTH-2M-E4 D	1894683	Cap Plug	1
AMTH-2M-E5 D	1894702	Grommet	1
AMTH-2M-E6 D	1894382	Cap Plug	1
AMTH-2M-E7 D	1894763	Bolt & Washer	2
AMTH-2M-E8 D	1896843	Wire Lead	1
AMTH-2M-E9 D	1896844	Band	1

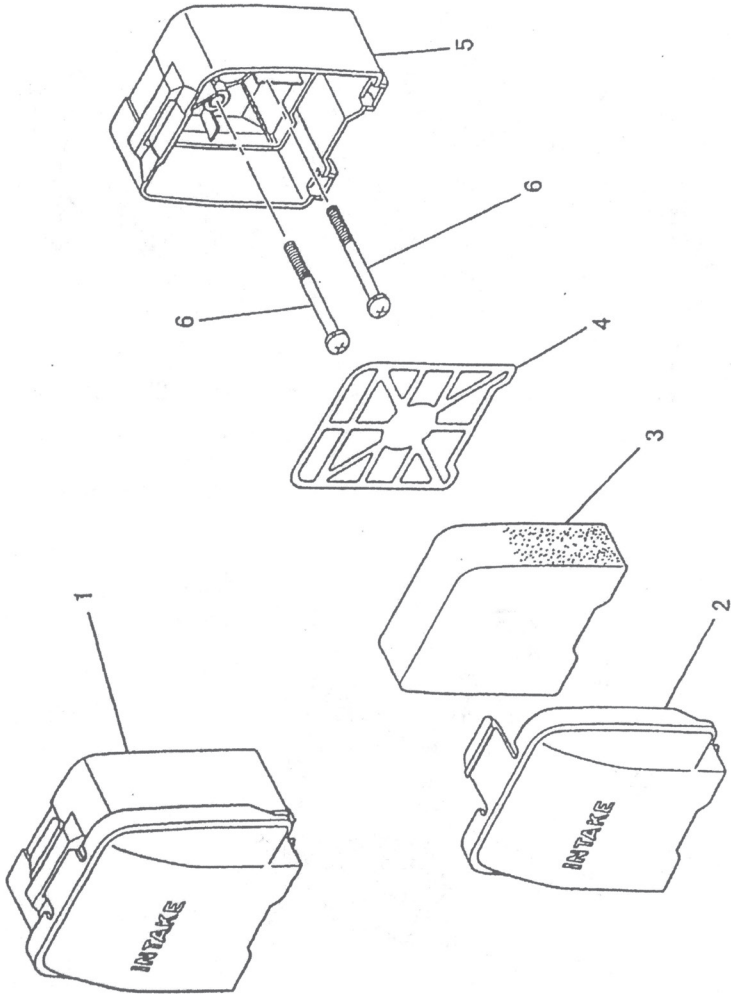
# DIAGRAM OF ENGINE TWO-MEN TEA HARVESTER



**E**

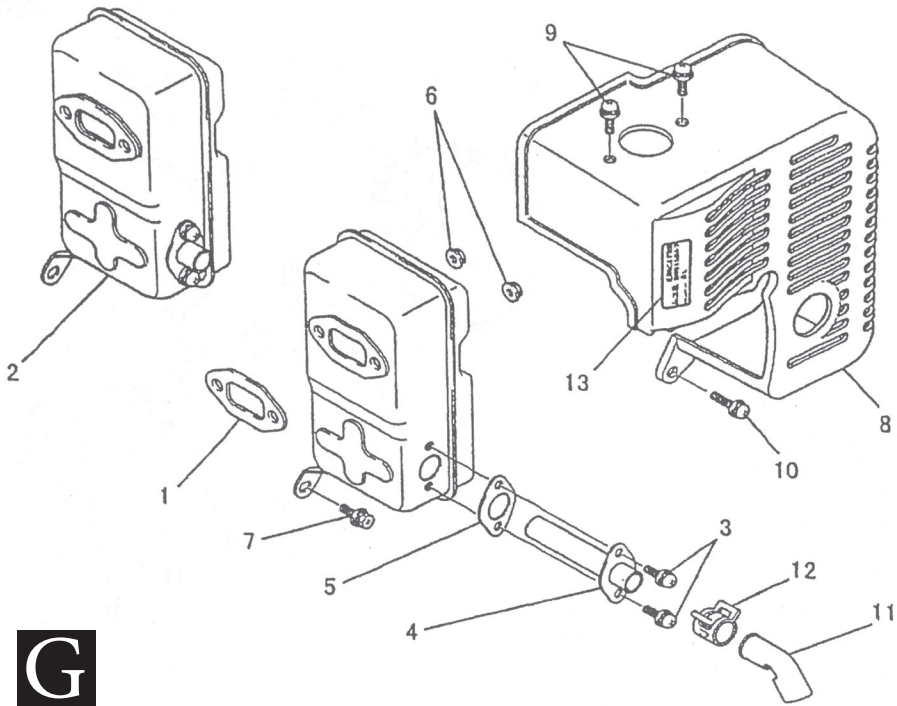
PART NO. RIPL	PART NO	PART NAME	MOQ
AMTH-2M-E1 E	1896945	Carburetor	1
AMTH-2M-E2 E	1896845	Body Pump	1
AMTH-2M-E3 E	1896225	Screen	1
AMTH-2M-E4 E	1896200	Valve Needle	1
AMTH-2M-E5 E	1896227	Spring	1
AMTH-2M-E6 E	1896226	Screw	1
AMTH-2M-E7 E	1896228	Pin	1
AMTH-2M-E8 E	1896202	Lever	1
AMTH-2M-E9 E	1896203	Body Pump	1
AMTH-2M-E10 E	1896724	cover	1
AMTH-2M-E11 E	1896183	Cap	1
AMTH-2M-E12 E	1896528	Diapuragm	1
AMTH-2M-E13 E	1896151	Gasket	1
AMTH-2M-E14 E	1896158	Diapuragm	1
AMTH-2M-E15 E	1896159	Gasket	1
AMTH-2M-E16 E	1896474	Clip	1
AMTH-2M-E17 E	1896475	Holder Wire	1
AMTH-2M-E18 E		Valve Throttle	1
AMTH-2M-E19 E	1896476	Screw	2
AMTH-2M-E20 E	1896478	Bracket	1
AMTH-2M-E21 E	1896191	Packing	1
AMTH-2M-E22 E	1869440	Screw	4
AMTH-2M-E23 E	1896731	Washer	1
AMTH-2M-E24 E	1896847	Needle High Speed	1
AMTH-2M-E25 E	1896728	Spring	1
AMTH-2M-E26 E	1896729	Washer	1
AMTH-2M-E27 E	1896192	O-Ring	1
AMTH-2M-E28 E	1896447	Insulator	1
AMTH-2M-E29 E	1896436	Gasket Carburetor	1
AMTH-2M-E30 E	1896317	Screw & Washer	2
AMTH-2M-E31 E	1896607	Gasket Insulator	1
AMTH-2M-E32 E	1896753	Tube Fuel	1
AMTH-2M-E33 E	1896848	Tube	1

# DIAGRAM OF ENGINE TWO-MEN TEA HARVESTER



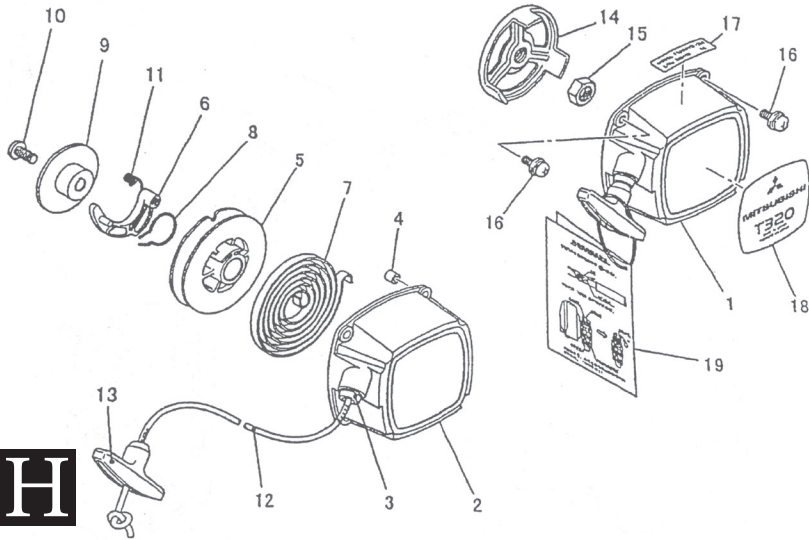
PART NO. RIPL	PART NO	PART NAME	MOQ
AMTH-2M-E1 F		Air Cleaner	1
AMTH-2M-E2 F	1896849	Cover Cleaner	1
AMTH-2M-E3 F	1896982	Element Cleaner	1
AMTH-2M-E4 F	1896841	Grid	1
AMTH-2M-E5 F	1896965	Case Cleaner	1
AMTH-2M-E6 F	1896943	Screw & Washer	2

## DIAGRAM OF ENGINE TWO-MEN TEA HARVESTER



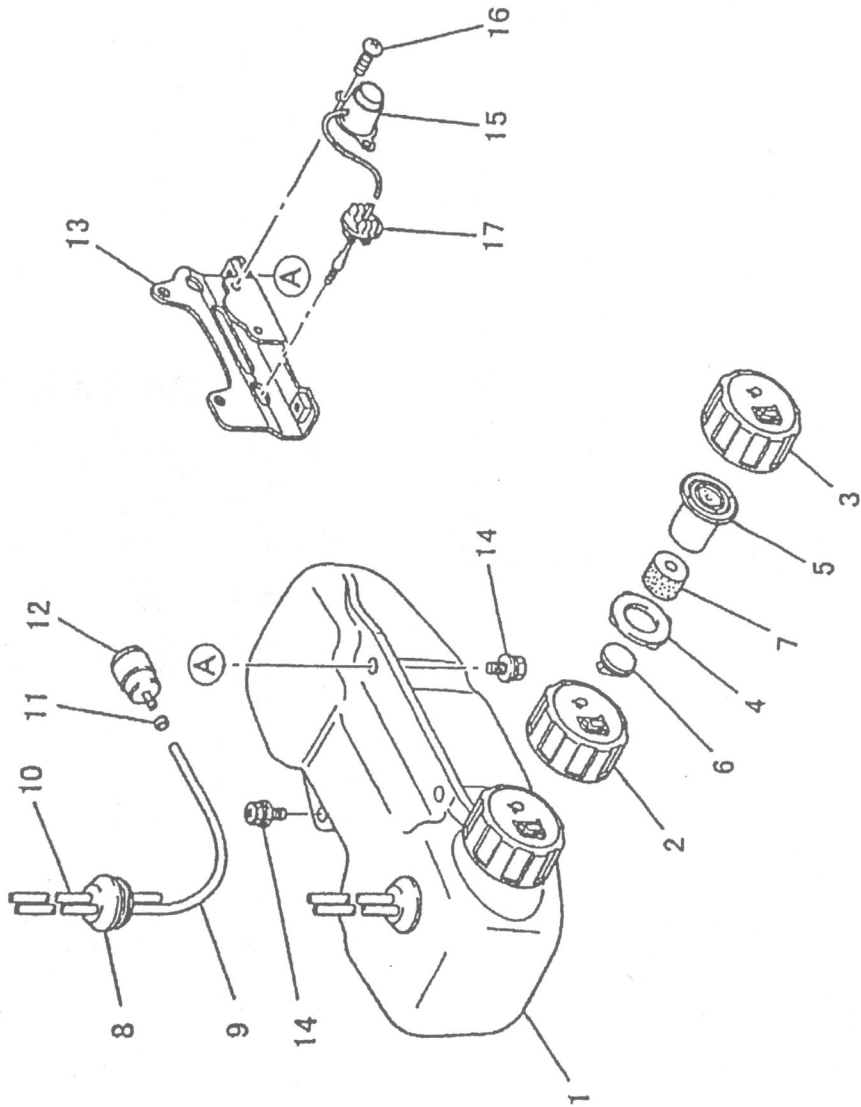
PART NO. RIPL	PART NO	PART NAME	MOQ
AMTH-2M-E1 G	1896609	Gasket Muffler	1
AMTH-2M-E2 G	1896606	Muffler Assy.	1
AMTH-2M-E3 G	1896760	Screw & Washer	2
AMTH-2M-E4 G	1896698	Pipe Tail	1
AMTH-2M-E5 G	1896699	Gasket	1
AMTH-2M-E6 G	1894569	Nut Flange	2
AMTH-2M-E7 G		Bolt & Washer	1
AMTH-2M-E8 G	1896851	Cover Muffler	1
AMTH-2M-E9 G	1894864	Screw & Washer	2
AMTH-2M-E10 G	1894547	Screw & Washer	1
AMTH-2M-E11 G	1896604	Pipe Tail	1
AMTH-2M-E12 G	1896605	Clamp	1
AMTH-2M-E13 G	1896248	label Caution	1

## DIAGRAM OF ENGINE TWO-MEN TEA HARVESTER



PART NO. RIPL	PART NO	PART NAME	MOQ
AMTH-2M-E1 H	1896647	Fuel Tank Assy.	1
AMTH-2M-E2 H	1896420	Tank Cap Assy.	1
AMTH-2M-E3 H	1896371	Cap Fuel Tank	1
AMTH-2M-E4 H	1896352	Packing	1
AMTH-2M-E5 H	1896492	Valve Breather	1
AMTH-2M-E6 H	1896353	Cap	1
AMTH-2M-E7 H	1896858	Sponge	1
AMTH-2M-E8 H	1896655	Plug	1
AMTH-2M-E9 H	1896686	Tube Fuel	1
AMTH-2M-E10 H	1896687	Tube Fuel	1
AMTH-2M-E11 H	1896755	Bush	1
AMTH-2M-E12 H	1896087	Filter fuel	1
AMTH-2M-E13 H	1896975	Bracket Tank	1
AMTH-2M-E14 H	1894548	Bolt & Washer	4
AMTH-2M-E15 H		Switch Stop	1
AMTH-2M-E16 H	1894687	Screw Washer	2
AMTH-2M-E17 H		Clip	1

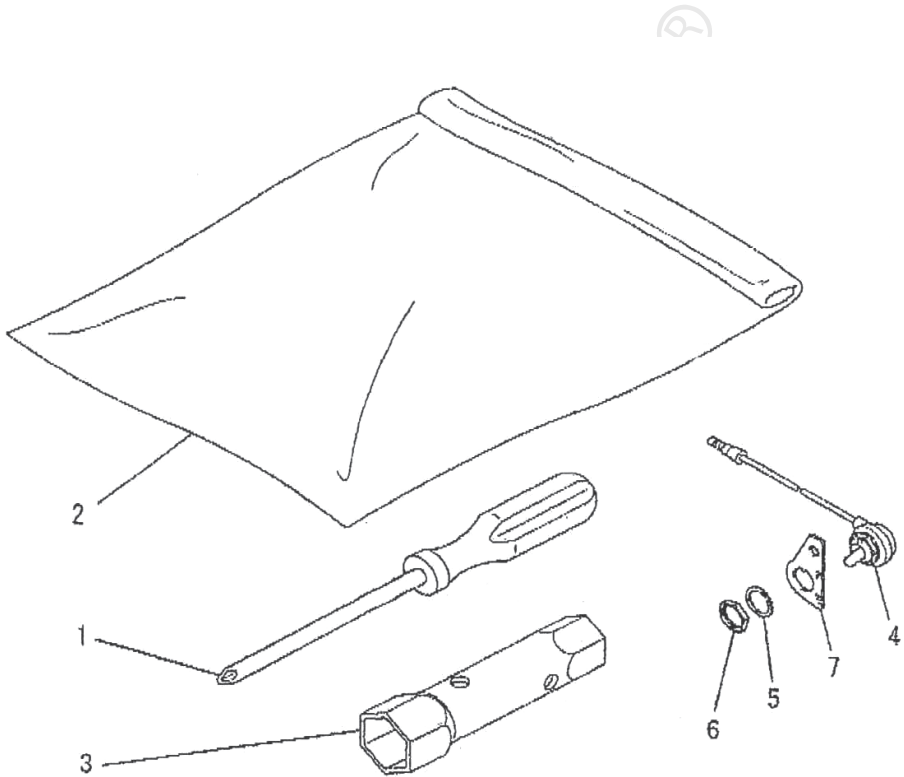
# DIAGRAM OF ENGINE TWO-MEN TEA HARVESTER



PART NO. RIPL	PART NO	PART NAME	MOQ
AMTH-2M-E1 i	1896684	Recoll Starter	1
AMTH-2M-E2 i	1896852	Case Starter	1
AMTH-2M-E3 i	1896853	Part Inner	1
AMTH-2M-E4 i	1896854	Plpe	4
AMTH-2M-E5 i	1896770	Reel	1
AMTH-2M-E6 i	1896952	Ratchet	1
AMTH-2M-E7 i	1896685	Spring	1
AMTH-2M-E8 i	1894285	Spring Frlctlon	1
AMTH-2M-E9 i	1894288	Plate Frlctlon	1
AMTH-2M-E10 i	1896855	Screw	1
AMTH-2M-E11 i	1896856	Spring Return	1
AMTH-2M-E12 i	1896627	Rope Starter	1
AMTH-2M-E13 i	1896857	Knob Starter	1
AMTH-2M-E14 i	1894729	Pulley Starter	1
AMTH-2M-E15 i	1894727	Nut J/S	1
AMTH-2M-E16 i	1896208	Screw & Washer	4
AMTH-2M-E17 i	1896189	Label	1
AMTH-2M-E18 i	1896661	label Name	1
AMTH-2M-E19 i		Label Cautlon	1



## DIAGRAM OF ENGINE TWO-MEN TEA HARVESTER



**J**

SN	PART NO	PART NAME	MOQ
AMTH-2M-E1 J	1896774	Driver Screw	1
AMTH-2M-E2 J	1896541	Bag Tool	1
AMTH-2M-E3 J	1896542	Spanner Box	1
AMTH-2M-E4 J	1894978	Switch Stop	1
AMTH-2M-E5 J		Washer SPG	1
AMTH-2M-E6 J		Nut	1
AMTH-2M-E7 J	1894966	Bracket	1

## INSPECTION & MAINTENANCE

For safety use, make sure the machine is cleaned every three-months. Before working, make sure to inspect the filter and the nozzle, and ensure there is no impurity. After working, make sure there is no water in the pump and the hose.

If the machine needs to be repaired in the guarantee period, please return the machine to the shop. You need to provide the certificate of purchase in order to repair or get the substitute.

Before Packing, the machine should be cleaned, then use closed packaging, packaging should be firm. Store the machine in dry place.

For transportation safety. The machine should comply with ISTA.



Meaning of crossed - out wheeled dustbin:

Do not dispose of electrical machines as unsorted municipal waste, use separate collection facilities.

If electrical machines are disposed of in landfills or dumps, hazardous substances can leak into the groundwater and get into the food chain, damaging your health and well-being.

When replacing old machines with new ones, the retailer is legally obligated to take back your old machine for disposals at least free of charge.

## Warranty Card

CUSTOMER COPY



Purchaser's Name & Address

\_\_\_\_\_  
\_\_\_\_\_

Product Name

AMTH-2M-320 Two-Men Harvester

Product Serial No.

\_\_\_\_\_

Invoice / DN No.

\_\_\_\_\_

Date of Delivery

\_\_\_\_\_

Dealer's Office Seal

\_\_\_\_\_

Dealer Sign \_\_\_\_\_

Customer Sign. \_\_\_\_\_

I/We accept the terms and conditions of Warranty as in the Warranty Card.

## Warranty Card

DEALER'S COPY



Purchaser's Name & Address

\_\_\_\_\_  
\_\_\_\_\_

Product Name

AMTH-2M-320 Two-Men Harvester

Product Serial No.

\_\_\_\_\_

Invoice / DN No.

\_\_\_\_\_

Date of Delivery

\_\_\_\_\_

Dealer's Office Seal

\_\_\_\_\_

Dealer Sign \_\_\_\_\_

Customer Sign. \_\_\_\_\_

I/We accept the terms and conditions of Warranty as in the Warranty Card.

## Warranty Card

COMPANY COPY



Purchaser's Name & Address

\_\_\_\_\_  
\_\_\_\_\_

Product Name

AMTH-2M-320 Two-Men Harvester

Product Serial No.

\_\_\_\_\_

Invoice / DN No.

\_\_\_\_\_

Date of Delivery

\_\_\_\_\_

Dealer's Office Seal

\_\_\_\_\_

Dealer Sign \_\_\_\_\_

Customer Sign. \_\_\_\_\_

I/We accept the terms and conditions of Warranty as in the Warranty Card.

1. **LIMITED WARRANTY PERIOD** : For a period of six months from the date of Sale / delivery of the product which ever is earlier. 2. **LIMITED WARRANTY OBLIGATION** : Replacement of defective part(s) by authorized dealer are free of charges. If found defective by reasons of defective material / poor workmanship, parts will be replaced and there will be no value re-imbursalment. 3. **TERMS & CONDITIONS** : a. Claims under warranty will be accepted on submission of Warranty Card duly filled and stamped by authorized dealer together with the original purchase document. : b. Shipping / transportation / Incidental charges incurred in replacing defective parts under warranty shall be borne by the purchaser.

**WARRANTY null & void if**

- (i) Lack of maintenance, (ii) Incorrect use of the machine or tampering, (iii) Use of non-genuine spare parts, (iv) Usage of acids, solvents, or any flammable materials, (v) Non-usage of filter water / clear water / soft water & using water above 40°C temperature, (vi) While using the pressure washers to draw water which is contaminated with dust & solvents (eg. paint thinners, gasoline, oil, etc.), (vii) Repair done by unauthorized service people, (viii) Those parts subject to wear & tear due to normal operations and plastic parts, rubber items etc, (ix) Loose connections, faulty electrical fixtures & fluctuations in power supply.
4. Should any failure occur during or after the warranty period, customer does not have the right to interrupt payment / price discount.
  5. Incidental or consequential damages like inconvenience commercial loss, loss of tie, mental agony etc.
  6. Loss of any nature due to operation or non-operation is not covered under warranty.
  7. All free service are at Dealer's service point only.
  8. Warranty ceases if service is not done periodically.
  9. The attached card should be completed and returned to Ratnagiri Impex Pvt. Ltd. for registration immediately after sale / delivery.
  10. The warranty is void unless you register the warranty card with Ratnagiri Impex Pvt. Ltd.
  11. The decision of Ratnagiri Impex Pvt. Ltd., in settling the warranty is final in all respects.
  12. All disputes are subject to Bangalore Courts Jurisdiction

1. **LIMITED WARRANTY PERIOD** : For a period of six months from the date of Sale / delivery of the product which ever is earlier. 2. **LIMITED WARRANTY OBLIGATION** : Replacement of defective part(s) by authorized dealer are free of charges. If found defective by reasons of defective material / poor workmanship, parts will be replaced and there will be no value re-imbursalment. 3. **TERMS & CONDITIONS** : a. Claims under warranty will be accepted on submission of Warranty Card duly filled and stamped by authorized dealer together with the original purchase document. : b. Shipping / transportation / Incidental charges incurred in replacing defective parts under warranty shall be borne by the purchaser.

**WARRANTY null & void if**

- (i) Lack of maintenance, (ii) Incorrect use of the machine or tampering, (iii) Use of non-genuine spare parts, (iv) Usage of acids, solvents, or any flammable materials, (v) Non-usage of filter water / clear water / soft water & using water above 40°C temperature, (vi) While using the pressure washers to draw water which is contaminated with dust & solvents (eg. paint thinners, gasoline, oil, etc.), (vii) Repair done by unauthorized service people, (viii) Those parts subject to wear & tear due to normal operations and plastic parts, rubber items etc, (ix) Loose connections, faulty electrical fixtures & fluctuations in power supply.
4. Should any failure occur during or after the warranty period, customer does not have the right to interrupt payment / price discount.
  5. Incidental or consequential damages like inconvenience commercial loss, loss of tie, mental agony etc.
  6. Loss of any nature due to operation or non-operation is not covered under warranty.
  7. All free service are at Dealer's service point only.
  8. Warranty ceases if service is not done periodically.
  9. The attached card should be completed and returned to Ratnagiri Impex Pvt. Ltd. for registration immediately after sale / delivery.
  10. The warranty is void unless you register the warranty card with Ratnagiri Impex Pvt. Ltd.
  11. The decision of Ratnagiri Impex Pvt. Ltd., in settling the warranty is final in all respects.
  12. All disputes are subject to Bangalore Courts Jurisdiction

1. **LIMITED WARRANTY PERIOD** : For a period of six months from the date of Sale / delivery of the product which ever is earlier. 2. **LIMITED WARRANTY OBLIGATION** : Replacement of defective part(s) by authorized dealer are free of charges. If found defective by reasons of defective material / poor workmanship, parts will be replaced and there will be no value re-imbursalment. 3. **TERMS & CONDITIONS** : a. Claims under warranty will be accepted on submission of Warranty Card duly filled and stamped by authorized dealer together with the original purchase document. : b. Shipping / transportation / Incidental charges incurred in replacing defective parts under warranty shall be borne by the purchaser.

**WARRANTY null & void if**

- (i) Lack of maintenance, (ii) Incorrect use of the machine or tampering, (iii) Use of non-genuine spare parts, (iv) Usage of acids, solvents, or any flammable materials, (v) Non-usage of filter water / clear water / soft water & using water above 40°C temperature, (vi) While using the pressure washers to draw water which is contaminated with dust & solvents (eg. paint thinners, gasoline, oil, etc.), (vii) Repair done by unauthorized service people, (viii) Those parts subject to wear & tear due to normal operations and plastic parts, rubber items etc, (ix) Loose connections, faulty electrical fixtures & fluctuations in power supply.
4. Should any failure occur during or after the warranty period, customer does not have the right to interrupt payment / price discount.
  5. Incidental or consequential damages like inconvenience commercial loss, loss of tie, mental agony etc.
  6. Loss of any nature due to operation or non-operation is not covered under warranty.
  7. All free service are at Dealer's service point only.
  8. Warranty ceases if service is not done periodically.
  9. The attached card should be completed and returned to Ratnagiri Impex Pvt. Ltd. for registration immediately after sale / delivery.
  10. The warranty is void unless you register the warranty card with Ratnagiri Impex Pvt. Ltd.
  11. The decision of Ratnagiri Impex Pvt. Ltd., in settling the warranty is final in all respects.
  12. All disputes are subject to Bangalore Courts Jurisdiction



ratnagiri  
impex  
BRINGING YOU THE BEST USE - NOW

### 1st Free Service Coupon

ISO 9001-2008  
CERTIFIED COMPANY

**FREE SERVICE COUPON (30 Days / 20 hrs (Which ever is earlier))**

Model  
AMTH-2M-320 Two-Men Harvester

Serial Number

PDI Date

Service No.

Purchase bill no.      Date

Dealer's Office Seal & Signature

- Operations:
- Check and Test the Fuel Mixture.
  - Check and Clean the Air Filter
  - Check, Clean and Adjust the Spark plug
  - Check and Adjust the Carburetor Tuning
  - Check and Sharpen the cutting Tools
  - Start and Check the Noise, Vibration, Loosen / Fasteners etc.
  - Product familiarization on Usage
  - Routine maintenance and Storage

Customer Signature.....

Conditions: Operations listed have been performed to my entire satisfaction without any labour charges. Only consumables were charged.



agriculture | horticulture | sericulture | plantations | forestry | garden | health care

WARRANTY AND FREE SERVICE COUPON



ratnagiri  
impex  
BRINGING YOU THE BEST USE - NOW

### 2nd Free Service Coupon

ISO 9001-2008  
CERTIFIED COMPANY

**FREE SERVICE COUPON (30 Days / 20 hrs (Which ever is earlier))**

Model  
AMTH-2M-320 Two-Men Harvester

Serial Number

PDI Date

Service No.

Purchase bill no.      Date

Dealer's Office Seal & Signature

- Operations:
- Check and Test the Fuel Mixture.
  - Check and Clean the Air Filter
  - Check, Clean and Adjust the Spark plug
  - Check and Adjust the Carburetor Tuning
  - Check and Sharpen the cutting Tools
  - Start and Check the Noise, Vibration, Loosen / Fasteners etc.
  - Product familiarization on Usage
  - Routine maintenance and Storage

Customer Signature.....

Conditions: Operations listed have been performed to my entire satisfaction without any labour charges. Only consumables were charged.



agriculture | horticulture | sericulture | plantations | forestry | garden | health care

WARRANTY AND FREE SERVICE COUPON



ratnagiri  
impex  
BRINGING YOU THE BEST USE - NOW

### 3rd Free Service Coupon

ISO 9001-2008  
CERTIFIED COMPANY

**FREE SERVICE COUPON (30 Days / 20 hrs (Which ever is earlier))**

Model  
AMTH-2M-320 Two-Men Harvester

Serial Number

PDI Date

Service No.

Purchase bill no.      Date

Dealer's Office Seal & Signature

- Operations:
- Check and Test the Fuel Mixture.
  - Check and Clean the Air Filter
  - Check, Clean and Adjust the Spark plug
  - Check and Adjust the Carburetor Tuning
  - Check and Sharpen the cutting Tools
  - Start and Check the Noise, Vibration, Loosen / Fasteners etc.
  - Product familiarization on Usage
  - Routine maintenance and Storage

Customer Signature.....

Conditions: Operations listed have been performed to my entire satisfaction without any labour charges. Only consumables were charged.



agriculture | horticulture | sericulture | plantations | forestry | garden | health care

WARRANTY AND FREE SERVICE COUPON



Small Maintenance. Big Savings.



Small Maintenance. Big Savings.



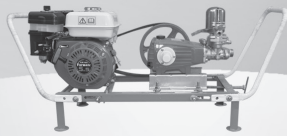
Small Maintenance. Big Savings.

# Do's & Don'ts

- Always read the instruction manual supplied along with the equipments and understand the correct installation and operating procedures before attempting to use the equipments.
- It is important to use the personal protection equipments such as head helmet with visor, ear defenders, goggles, safety gloves, cut resistant shoes, trousers and jackets while operating potentially dangerous machines.
- Avoid untrained persons using the equipments. Children must not be allowed to handle these equipments.
- Always use genuine spares and accessories in repairs and usage to derive maximum life of the equipments.
- Always keep the equipments in good working condition to minimise loss of output as well as to reduce the pollution and save the environment.
- Do not use the machine within range of persons unless they wear protective clothing.
- Do not operate the machine when fatigued or under the influence of alcohol or drugs.
- For more query kindly contact for our Service Center/Dealer/ Franchise

# Agrimate Army For Pest Control

ANY WHERE - ANY TIME - ANY CROP



  
**AGRIMATE**<sup>®</sup>  
Maximum Power - Super Economy

RATNAGIRI IMPEX PVT LTD  
Annapurna House, #1/1G, 7th Cross, New Guddadahalli  
Mysore Road, Bangalore-560 026  
Customer Care: 1800-425-7475  
email: [customercare@ratnagiriimpex.com](mailto:customercare@ratnagiriimpex.com)



Marketed by:  
 **ratnagiri**<sup>®</sup>  
**impex**  
BRINGING YOU THE FUTURE... NOW

[www.ratnagiriimpex.com](http://www.ratnagiriimpex.com)

AN ISO 9001:2008 CERTIFIED COMPANY