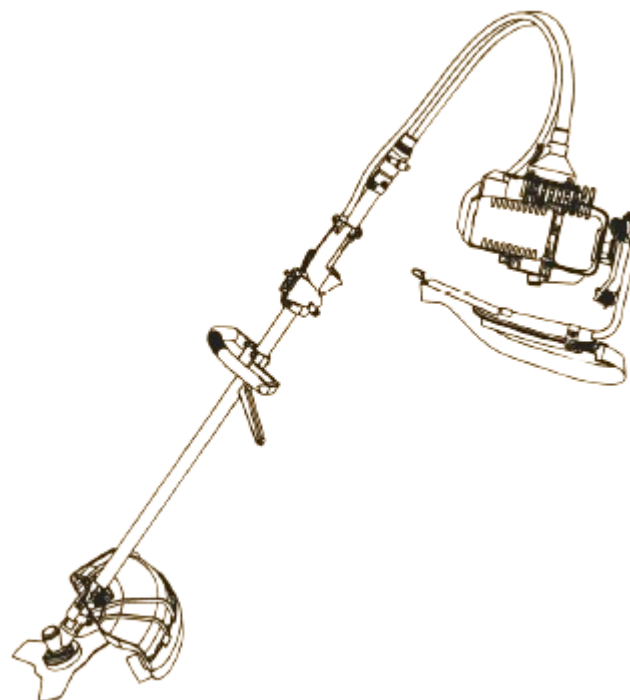


USER MANUAL

AGRIMATE BRUSH CUTTER - BACKPACK AM-400HC-BP-4S-PRO



INTRODUCTION

Dear Sir/ Madam,

Thank you for choosing Agrimate product. You are the proud owner of high technology & durable machine. Trust that our Franchisee/Dealer installed the product & installed the product and explained you about the usage & service instructions. Please visit our autorised dealer for your future requirement of our other equipments, genuine spares, accessories and services. Service coupons are attached with this manual and you can avail free service to keep your machine fit always to use on demand.

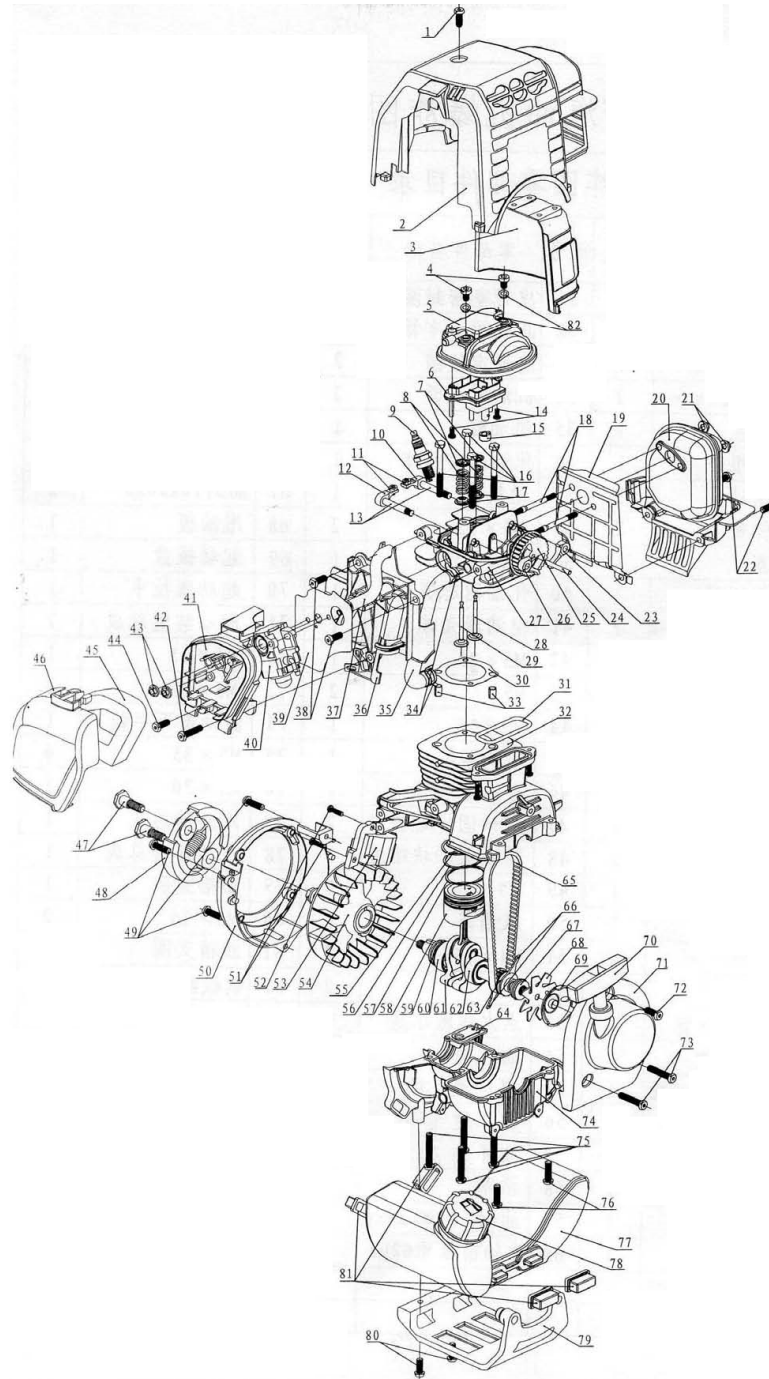
About Ratnagiri,

We import and market of high quality of agriculture wide range of equipments which we are selling through our authorised franchisee or dealer network. We are in this field from past years service the farmer. community. For further details, Please visit our website www.agrimart.in. & Give a missed call to 7393 938 938.

TECHNICAL SPECIFICATIONS

MODEL	AM-400HC-BP-4S-PRO
ENGINE MODEL	GX35
DISPLACEMENT	35.8CC
ENGINE POWER	1.0kw/7800rpm
CARBURETOR	Diaphragm
FUEL TANK CAPACITY	0.85LTR
TUBE DIAMETER	28mm

ENGINE DIAGRAM & SPARE PARTS LIST OF AM-400HC-BP-4S-PRO BRUSH CUTTER BACKPACK



ENGINE DIAGRAM & SPARE PARTS LIST OF AM-400HC-BP-4S-PRO BRUSH CUTTER BACKPACK

SL NO	RIPL PART NO	DESCRIPTION	SL NO	RIPL PART NO	DESCRIPTION
1	AM-400HC-BP-EA01	SCREW	17	AM-400HC-BP-EA17	VALVE OIL SEAL
2	AM-400HC-BP-EA02	ENGINE COVER	18	AM-400HC-BP-EA18	MUFFLER DUAL-HEAD SCREW
3	AM-400HC-BP-EA03	ADIABATIC WASHER	19	AM-400HC-BP-EA19	EXHAUST WIND BOARD
4	AM-400HC-BP-EA04	SCREW	20	AM-400HC-BP-EA20	MUFFLER ASSEMBLY
5	AM-400HC-BP-EA05	ROCKER CHAMBERLID	21	AM-400HC-BP-EA21	Screw
6	AM-400HC-BP-EA06	RETURE OIL BOARD	22	AM-400HC-BP-EA22	SCREW
7	AM-400HC-BP-EA07	VALVER LOCK	23	AM-400HC-BP-EA23	EXHAUST CAMROCKER
8	AM-400HC-BP-EA08	VALVE SPRING	24	AM-400HC-BP-EA24	CAM SHAFT
9	AM-400HC-BP-EA09	SPARK PLUG	25	AM-400HC-BP-EA25	PASSIVE WHEEL
10	AM-400HC-BP-EA10	EXHAUST VALVEROCKER	26	AM-400HC-BP-EA26	INLET VALVE CAMROCKER
11	AM-400HC-BP-EA11	ADJUST SCREW	27	AM-400HC-BP-EA27	CYLINDER HEAD
12	AM-400HC-BP-EA12	INLET VALVER TAPROCKER	28	AM-400HC-BP-EA28	EXHAUST VALVE(ZE)
13	AM-400HC-BP-EA13	ROCKER SHAFT	29	AM-400HC-BP-EA29	INLET VALVE (ZI)
14	AM-400HC-BP-EA14	SCREW	30	AM-400HC-BP-EA30	CYLINDER HEAD GASKET
15	AM-400HC-BP-EA15	OIL PIPE SHEATH	31	AM-400HC-BP-EA31	STRAP CHAMER GASKET
16	AM-400HC-BP-EA16	SCREW	32	AM-400HC-BP-EA32	THE FIRST HALF CRANKCASE

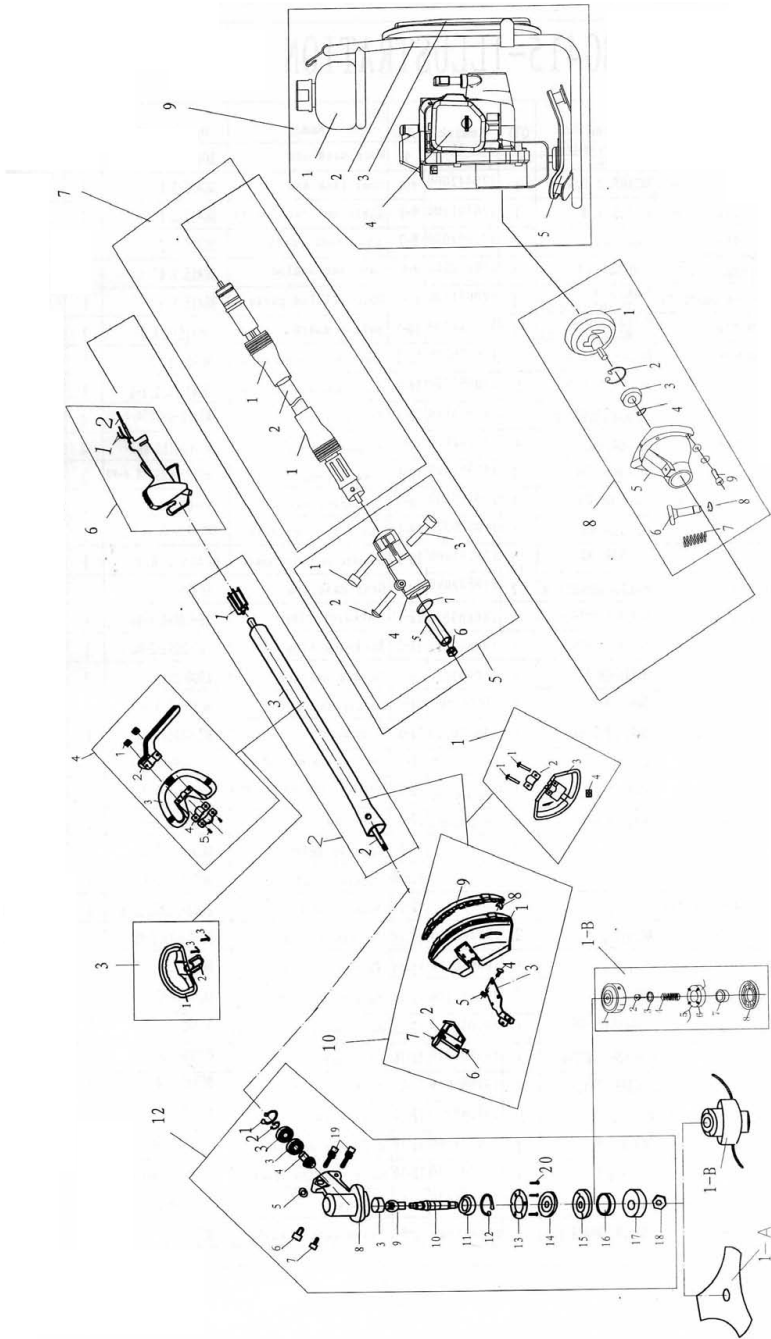
ENGINE DIAGRAM & SPARE PARTS LIST OF AM-400HC-BP-4S-PRO BRUSH CUTTER BACKPACK

SL NO	RIPL PART NO	DESCRIPTION	SL NO	RIPL PART NO	DESCRIPTION
33	AM-400HC-BP-EA33	ORIENTATION PIN	49	AM-400HC-BP-EA49	SCREW
34	AM-400HC-BP-EA34	OIL PIPE CLIP	50	AM-400HC-BP-EA50	FANCOVER
35	AM-400HC-BP-EA35	LUBRICATING OIL PIPE	51	AM-400HC-BP-EA51	SCREW
36	AM-400HC-BP-EA36	CARBURETOR INSTALL SEAT	52	AM-400HC-BP-EA52	SCREW
37	AM-400HC-BP-EA37	INLET AIR PIPE	53	AM-400HC-BP-EA53	COIL ASSEMBLY
38	AM-400HC-BP-EA38	SCREW	54	AM-400HC-BP-EA54	MAGNETIC FLY WHEEL
39	AM-400HC-BP-EA39	CARBURETOR WASHER	55	AM-400HC-BP-EA55	PISTON RING FOR AIR(1)
40	AM-400HC-BP-EA40	CARBURETOR ASSEMBLY	56	AM-400HC-BP-EA56	PISTON RING (2)
41	AM-400HC-BP-EA41	AIR FILTER SHELL	57	AM-400HC-BP-EA57	PISTON RING FOR OIL
42	AM-400HC-BP-EA42	SCREW	58	AM-400HC-BP-EA58	PISTON
43	AM-400HC-BP-EA43	SCREW	59	AM-400HC-BP-EA59	OIL SEAL
44	AM-400HC-BP-EA44	SCREW	60	AM-400HC-BP-EA60	bearing
45	AM-400HC-BP-EA45	AIR FILTER SPONGE	61	AM-400HC-BP-EA61	CRANK SHAFT ASSEMBLY
46	AM-400HC-BP-EA46	AIR FILTER COVER	62	AM-400HC-BP-EA62	BEARING
47	AM-400HC-BP-EA47	CLUTCH SHOE SCREW	63	AM-400HC-BP-EA63	TIMING BELT WHEEL
48	AM-400HC-BP-EA48	CLUTH ASSEMBLY	64	AM-400HC-BP-EA64	VALVE

ENGINE DIAGRAM & SPARE PARTS LIST OF AM-400HC-BP-4S-PRO BRUSH CUTTER BACKPACK

SL NO	RIPL PART NO	DESCRIPTION	SL NO	RIPL PART NO	DESCRIPTION
65	AM-400HC-BP-EA65	TIMING BELT WHEEL	75	AM-400HC-BP-EA75	SCREW
66	AM-400HC-BP-EA66	THROW OIL BOARD	76	AM-400HC-BP-EA76	SCREW
67	AM-400HC-BP-EA67	OIL SEAL	77	AM-400HC-BP-EA77	FUEL TANK ASSEMBLY
68	AM-400HC-BP-EA68	FAN	78	AM-400HC-BP-EA78	FUEL TANK LID ASSEMBLY
69	AM-400HC-BP-EA69	STARTER PLATE	79	AM-400HC-BP-EA79	FUEL TANK BRACKET
70	AM-400HC-BP-EA70	STARTER KNOB	80	AM-400HC-BP-EA80	SCREW
71	AM-400HC-BP-EA71	STARTER SET ASSEMBLY	81	AM-400HC-BP-EA81	ANTI-VIBRATION GASKET
72	AM-400HC-BP-EA72	SCREW	82	AM-400HC-BP-EA82	SCREW
73	AM-400HC-BP-EA73	SCREW			
74	AM-400HC-BP-EA74	THE SECONDHAF4 CARANK CASE			

TRANSMISSION DIAGRAM & SPARE PARTS LIST OF AM-400HC-BP-4S-PRO BRUSH CUTTER BACKPACK



TRANSMISSION DIAGRAM & SPARE PARTS LIST OF AM-400HC-BP-4S-PRO BRUSH CUTTER BACKPACK

SL NO	RIPL PART NO	DESCRIPTION	SL NO	RIPL PART NO	DESCRIPTION
1	AM-400HC-BP-T01	Small Safety Guards	4-2	AM-400HC-BP-T4.2	handles protection
1-1	AM-400HC-BP-T1.1	"+" heads screws	4-3	AM-400HC-BP-T4.3	"D" handle
1-5	AM-400HC-BP-T1-5	Spring cushion	4-4	AM-400HC-BP-T4.4	lock
1-2	AM-400HC-BP-T1.2	Press board for safety guards	4-5	AM-400HC-BP-T4.5	"+"screws
1-3	AM-400HC-BP-T1.3	Cover of safety guard	5-1	AM-400HC-BP-T5.1	Inner 6 angles screws
1-4	AM-400HC-BP-T1.4	Square screws	5-2	AM-400HC-BP-T5.2	Inner 6 angles screws
2-1	AM-400HC-BP-T2.1	Oil bearing	5-3	AM-400HC-BP-T5.3	Inner 6 angles screws
2-2	AM-400HC-BP-T2.2	Transmission shaft(7T)	5-4	AM-400HC-BP-T5.4	red connecting parts
2-3	AM-400HC-BP-T2.3	Aluminium pipe	5-5	AM-400HC-BP-T5.5	connectors of shaft
3-1	AM-400HC-BP-T3.1	D type handle	5-6	AM-400HC-BP-T5.6	6 angles screw
3-2	AM-400HC-BP-T3.2	press board of handle screw	5-7	AM-400HC-BP-T5.7	Shock of connector
3-3	AM-400HC-BP-T3.3	"+" screw parts	6	AM-400HC-BP-T06	single hand grip
3-4	AM-400HC-BP-T3.4	6 square screw	6-1	AM-400HC-BP-T6.1	Stop line
4-1	AM-400HC-BP-T4.1	4-square screws	6-2	AM-400HC-BP-T6.2	Throttle line






TRANSMISSION DIAGRAM & SPARE PARTS LIST OF AM-400HC-BP-4S-PRO BRUSH CUTTER BACKPACK

SL NO	RIPL PART NO	DESCRIPTION	SL NO	RIPL PART NO	DESCRIPTION
7	AM-400HC-BP-T07	Flexible shaft parts	9-3	AM-400HC-BP-T9.3	backpack parts
7-1	AM-400HC-BP-T7.1	Housing of shaft	9-4	AM-400HC-BP-T9.4	gasoline engine
7-2	AM-400HC-BP-T7.2	Flexible shaft parts	9-5	AM-400HC-BP-T9.5	motor fixing parts
8-1	AM-400HC-BP-T8.1	clutch plate (square)	10-1	AM-400HC-BP-T10.1	Safety guard
8-2	AM-400HC-BP-T8.2	backstop ring	10-2	AM-400HC-BP-T10.2	localizer for safety guard
8-3	AM-400HC-BP-T8.3	needle bearing	10-3	AM-400HC-BP-T10.3	connecting board of safety guard
8-4	AM-400HC-BP-T8.4	backstop ring shaft	10-4	AM-400HC-BP-T10.4	"+" screws
8-5	AM-400HC-BP-T8.5	connecting plate back	10-5	AM-400HC-BP-T10.5	6 square screws
8-6	AM-400HC-BP-T8.6	insert pin	10-6	AM-400HC-BP-T10.6	"+" screws
8-7	AM-400HC-BP-T8.7	Spring cushion	10-7	AM-400HC-BP-T10.7	6 square screws
8-8	AM-400HC-BP-T8.8	Backstop mouth ting	10-8	AM-400HC-BP-T10.8	Cutting line plate
8-9	AM-400HC-BP-T8.9	Inner 6 angles screws	10-9	AM-400HC-BP-T10.9	Plastic parts for guard
9	AM-400HC-BP-T09	backpack ack ass'	12	AM-400HC-BP-T12	Gear case ass'
9-1	AM-400HC-BP-T9.1	fuel tank ass'	12-1	AM-400HC-BP-T12.1	Backstop ring
9-2	AM-400HC-BP-T9.2	shaft of backpack parts	12-2	AM-400HC-BP-T12.2	Backstop ring

SL NO	RIPL PART NO	DESCRIPTION	SL NO	RIPL PART NO	DESCRIPTION
12-3	AM-400HC-BP-T12.3	Needle bearing	12-13	AM-400HC-BP-T12.13	Protecting cap
12-4	AM-400HC-BP-T12.4	Initiative Gear	12-14	AM-400HC-BP-T12.14	Washer of shaft
12-5	AM-400HC-BP-T12.5	6 square screws	12-15	AM-400HC-BP-T12.15	Press board of blade
12-6	AM-400HC-BP-T12.6	Inner 6 angles screws	12-16	AM-400HC-BP-T12.16	oil seal
12-7	AM-400HC-BP-T12.7	Inner 6 angles screws	12-17	AM-400HC-BP-T12.17	Protecting cover
12-8	AM-400HC-BP-T12.8	Gear case ass'	12-18	AM-400HC-BP-T12.18	Left-turn screws
12-9	AM-400HC-BP-T12.9	Passive gear	12-19	AM-400HC-BP-T12.19	6 angles screws
12-10	AM-400HC-BP-T12.10	Spline shaft	12-20	AM-400HC-BP-T12.20	Inner 6 angles screws
12-11	AM-400HC-BP-T12.11	Needle bearing	1-A	AM-400HC-BP-T1A	blades
12-12	AM-400HC-BP-T12.12	Backstop ring	1-B	AM-400HC-BP-T1B	Nylong cutter ass'






WARRANTY CARD

CUSTOMER COPY

DATE _____	DATE OF DELIVERY _____	DEALERS OFFICIAL SEAL	DEALERS SIGN _____
PURCHASERS NAME & ADDRESS _____ _____	 CUSTOMER SIGN		
PRODUCT NAME	PRODUCT SERIAL NO.	INVOICE/DN NO.	
			






I/Will accept the terms and conditions of warranty as in the warranty card

DEALERS COPY

DATE _____	DATE OF DELIVERY _____	DEALERS OFFICIAL SEAL	DEALERS SIGN _____
PURCHASERS NAME & ADDRESS _____ _____	 CUSTOMER SIGN		
PRODUCT NAME	PRODUCT SERIAL NO.	INVOICE/DN NO.	
			

I/Will accept the terms and conditions of warranty as in the warranty card

COMPANY COPY

DATE _____	DATE OF DELIVERY _____	DEALERS OFFICIAL SEAL	DEALERS SIGN _____
PURCHASERS NAME & ADDRESS _____ _____	 CUSTOMER SIGN		
PRODUCT NAME	PRODUCT SERIAL NO.	INVOICE/DN NO.	
			

I/Will accept the terms and conditions of warranty as in the warranty card

1. LIMITED WARRANTY PERIOD : For a period of six months from the date of Sale / delivery of the product which ever is earlier. 2. LIMITED WARRANTY OBLIGATION : Replacement of defective part(s) by authorized dealer are free of charges. If found defective by reasons of defective material / poor workmanship, parts will be replaced and there will be no value re-imburement. 3. TERMS & CONDITIONS : a. Claims under warranty will be accepted on submission of Warranty Card duly filled and stamped by authorized dealer together with the original purchase document. : b. Shipping / transportation / Incidental charges incurred in replacing defective parts under warranty shall be borne by the purchaser

WARRANTY null & void if

- (i) Lack of maintenance, (ii) Incorrect use of the machine or tampering, (iii) Use of non-genuine spare parts, (iv) Usage of acids, solvents, or any flammable materials, (v) Non-usage of filter water / clear water / soft water & using water above 40°C temperature, (vi) While using the pressure washers to draw water which is contaminated with dust & solvents (eg. paint thinners, gasoline, oil, etc.), (vii) Repair done by unauthorized service people, (viii) Those parts subject to wear & tear due to normal operations and plastic parts, rubber items etc, (ix) Loose connections, faulty electrical fixtures & fluctuations in power supply.
- 4. Should any failure occur during or after the warranty period, customer does not have the right to interrupt payment / price discount.
- 5. Incidental or consequential damages like inconvenience commercial loss, loss of tie, mental agony etc.
- 6. Loss of any nature due to operation or non-operation is not covered under warranty.
- 7. All free service are at Dealer's service point only.
- 8. Warranty ceases if service is not done periodically.
- 9. The attached card should be completed and returned to Ratnagiri Impex Pvt. Ltd. for registration immediately after sale / delivery.
- 10. The warranty is void unless you register the warranty card with Ratnagiri Impex Pvt. Ltd.
- 11. The decision of Ratnagiri Impex Pvt. Ltd., in settling the warranty is final in all respects.
- 12. All disputes are subject to Bangalore Courts Jurisdiction

1. LIMITED WARRANTY PERIOD : For a period of six months from the date of Sale / delivery of the product which ever is earlier. 2. LIMITED WARRANTY OBLIGATION : Replacement of defective part(s) by authorized dealer are free of charges. If found defective by reasons of defective material / poor workmanship, parts will be replaced and there will be no value re-imburement. 3. TERMS & CONDITIONS : a. Claims under warranty will be accepted on submission of Warranty Card duly filled and stamped by authorized dealer together with the original purchase document. : b. Shipping / transportation / Incidental charges incurred in replacing defective parts under warranty shall be borne by the purchaser.

WARRANTY null & void if

- (i) Lack of maintenance, (ii) Incorrect use of the machine or tampering, (iii) Use of non-genuine spare parts, (iv) Usage of acids, solvents, or any flammable materials, (v) Non-usage of filter water / clear water / soft water & using water above 40°C temperature, (vi) While using the pressure washers to draw water which is contaminated with dust & solvents (eg. paint thinners, gasoline, oil, etc.), (vii) Repair done by unauthorized service people, (viii) Those parts subject to wear & tear due to normal operations and plastic parts, rubber items etc, (ix) Loose connections, faulty electrical fixtures & fluctuations in power supply.
- 4. Should any failure occur during or after the warranty period, customer does not have the right to interrupt payment / price discount.
- 5. Incidental or consequential damages like inconvenience commercial loss, loss of tie, mental agony etc.
- 6. Loss of any nature due to operation or non-operation is not covered under warranty.
- 7. All free service are at Dealer's service point only.
- 8. Warranty ceases if service is not done periodically.
- 9. The attached card should be completed and returned to Ratnagiri Impex Pvt. Ltd. for registration immediately after sale / delivery.
- 10. The warranty is void unless you register the warranty card with Ratnagiri Impex Pvt. Ltd.
- 11. The decision of Ratnagiri Impex Pvt. Ltd., in settling the warranty is final in all respects.
- 12. All disputes are subject to Bangalore Courts Jurisdiction

1. LIMITED WARRANTY PERIOD : For a period of six months from the date of Sale / delivery of the product which ever is earlier. 2. LIMITED WARRANTY OBLIGATION : Replacement of defective part(s) by authorized dealer are free of charges. If found defective by reasons of defective material / poor workmanship, parts will be replaced and there will be no value re-imburement. 3. TERMS & CONDITIONS : a. Claims under warranty will be accepted on submission of Warranty Card duly filled and stamped by authorized dealer together with the original purchase document. : b. Shipping / transportation / Incidental charges incurred in replacing defective parts under warranty shall be borne by the purchaser.

WARRANTY null & void if

- (i) Lack of maintenance, (ii) Incorrect use of the machine or tampering, (iii) Use of non-genuine spare parts, (iv) Usage of acids, solvents, or any flammable materials, (v) Non-usage of filter water / clear water / soft water & using water above 40°C temperature, (vi) While using the pressure washers to draw water which is contaminated with dust & solvents (eg. paint thinners, gasoline, oil, etc.), (vii) Repair done by unauthorized service people, (viii) Those parts subject to wear & tear due to normal operations and plastic parts, rubber items etc, (ix) Loose connections, faulty electrical fixtures & fluctuations in power supply.
- 4. Should any failure occur during or after the warranty period, customer does not have the right to interrupt payment / price discount.
- 5. Incidental or consequential damages like inconvenience commercial loss, loss of tie, mental agony etc.
- 6. Loss of any nature due to operation or non-operation is not covered under warranty.
- 7. All free service are at Dealer's service point only.
- 8. Warranty ceases if service is not done periodically.
- 9. The attached card should be completed and returned to Ratnagiri Impex Pvt. Ltd. for registration immediately after sale / delivery.
- 10. The warranty is void unless you register the warranty card with Ratnagiri Impex Pvt. Ltd.
- 11. The decision of Ratnagiri Impex Pvt. Ltd., in settling the warranty is final in all respects.
- 12. All disputes are subject to Bangalore Courts Jurisdiction



FREE SERVICE COUPON (30DAYS/30HRS. WHICHEVER IS EARLIER)

MODEL	<input type="text"/>	SERIAL NUMBER	<input type="text"/>
PDI DATE	SERVICE NO.	PURCHASE BILL NO.	DATE
<input type="text"/>	<input type="text"/>	<input type="text"/>	<input type="text"/>
DEALERS OFFICE SEAL	OPERATIONS		
<input type="text"/>	<ol style="list-style-type: none"> 1. Check and test the fuel mixture 3. Check , clean and adjust the spark plug 5. Check and sparken the cutting tools 7. Start and check the noise, vibration, loosen etc.. 	<ol style="list-style-type: none"> 2. check and clean the air filter 4. Check and adjust the carburetor tuning 6. Product familirisation on usage 8. Routine maintenance and shortage. 	

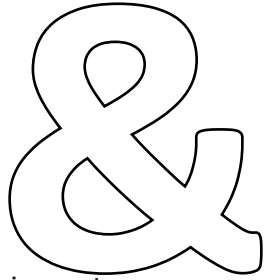
FREE SERVICE COUPON (30DAYS/30HRS. WHICHEVER IS EARLIER)

MODEL	<input type="text"/>	SERIAL NUMBER	<input type="text"/>
PDI DATE	SERVICE NO.	PURCHASE BILL NO.	DATE
<input type="text"/>	<input type="text"/>	<input type="text"/>	<input type="text"/>
DEALERS OFFICE SEAL	OPERATIONS		
<input type="text"/>	<ol style="list-style-type: none"> 1. Check and test the fuel mixture 3. Check , clean and adjust the spark plug 5. Check and sparken the cutting tools 7. Start and check the noise, vibration, loosen etc.. 	<ol style="list-style-type: none"> 2. check and clean the air filter 4. Check and adjust the carburetor tuning 6. Product familirisation on usage 8. Routine maintenance and shortage. 	

FREE SERVICE COUPON (30DAYS/30HRS. WHICHEVER IS EARLIER)

MODEL	<input type="text"/>	SERIAL NUMBER	<input type="text"/>
PDI DATE	SERVICE NO.	PURCHASE BILL NO.	DATE
<input type="text"/>	<input type="text"/>	<input type="text"/>	<input type="text"/>
DEALERS OFFICE SEAL	OPERATIONS		
<input type="text"/>	<ol style="list-style-type: none"> 1. Check and test the fuel mixture 3. Check , clean and adjust the spark plug 5. Check and sparken the cutting tools 7. Start and check the noise, vibration, loosen etc.. 	<ol style="list-style-type: none"> 2. check and clean the air filter 4. Check and adjust the carburetor tuning 6. Product familirisation on usage 8. Routine maintenance and shortage. 	

DOS



DONT'S

attempting to use the equipments.

1. Always read the instruction manual supplied along with the equipments and understand the correct installation and operating procedures before

trousers and jackets while operating potentially dangerous machines
2. It is important to use the personal protection equipments such as head helmet with visor, ear defenders, goggles, safety gloves, cut resistant shoes,
3. Avoid untrained persons using the equipments. Children must not be allowed to handle these equipments
4. Always use genuine spares and accessories in repairs and usage to derive maximum life of the equipments.
5. Always keep the equipments in good working condition to minimize loss of output as well as to reduce the pollution and save the environment
6. Do not use the machine within range of persons unless they wear protective clothing
7. Do not operate the machine when fatigued or under the influence of alcohol or drugs
8. For more query kindly contact for our Service Center/Dealer/ franchise

NO. 1 CHOICE OF FARMERS SINCE 1999



Marketed by.
**ratnagiri
impex**
BRINGING YOU THE FUTURE... NOW

RATNAGIRI IMPEX PVT., LTD.,

Annapurna House, #1 / 1G, 7th Cross, New
Guddadahalli

Mysore Road, Bangalore - 560 026

Missed Call : 7393 938 938

Email: ask@agrimart.in