

User Manual


AGRIMATE[®]
Maximum Power - Super Economy

AM BIG BOSS BATTERY SPRAYER



BEFORE OPERATING THIS MACHINE,
PLEASE READ THESE INSTRUCTIONS CAREFULLY

DISCLAIMER: DUE TO CONSTANT UPGRADATION, FEATURES AND SPECIFICATIONS ARE SUBJECT TO CHANGE WITHOUT NOTICE

VERY HIGH PRESSURE!!!

- Tank body inspired from the shape of Human Backbone & ribcage.
- Very Strong & Durable Sprayer

SAILENT FEATURES

- Capacity : 20L
- TANK MATERIAL : PP
- WORKING PRESSURE : 7.5L/M
- BATTERY : 12V/14AH

TECHNICAL SPECIFICATION

Model	AM BIG BOSS
Model Name	Battery Sprayer
Chamber/Barrel	Plastic PP (High pressure)
Trigger/Clutch	Plastic
Belt	Synthetic
Handle set	Heavy Pipe
Working Pressure	7.5L/M
Net weight	6.8KG
Gross Weight	7.4KG

NOTE

Please clean tank inside by clear water after spraying each time, Please use filter when put into water.

STORE

Every time after using, Please clean the pump, then charge 10-15 hours, keep it in dry and shady place.

WARNING

Don't let battery be without any power, otherwise it will be difficult to be recharged next time. As battery is with self-discharge function, please recharge it every two or three months.

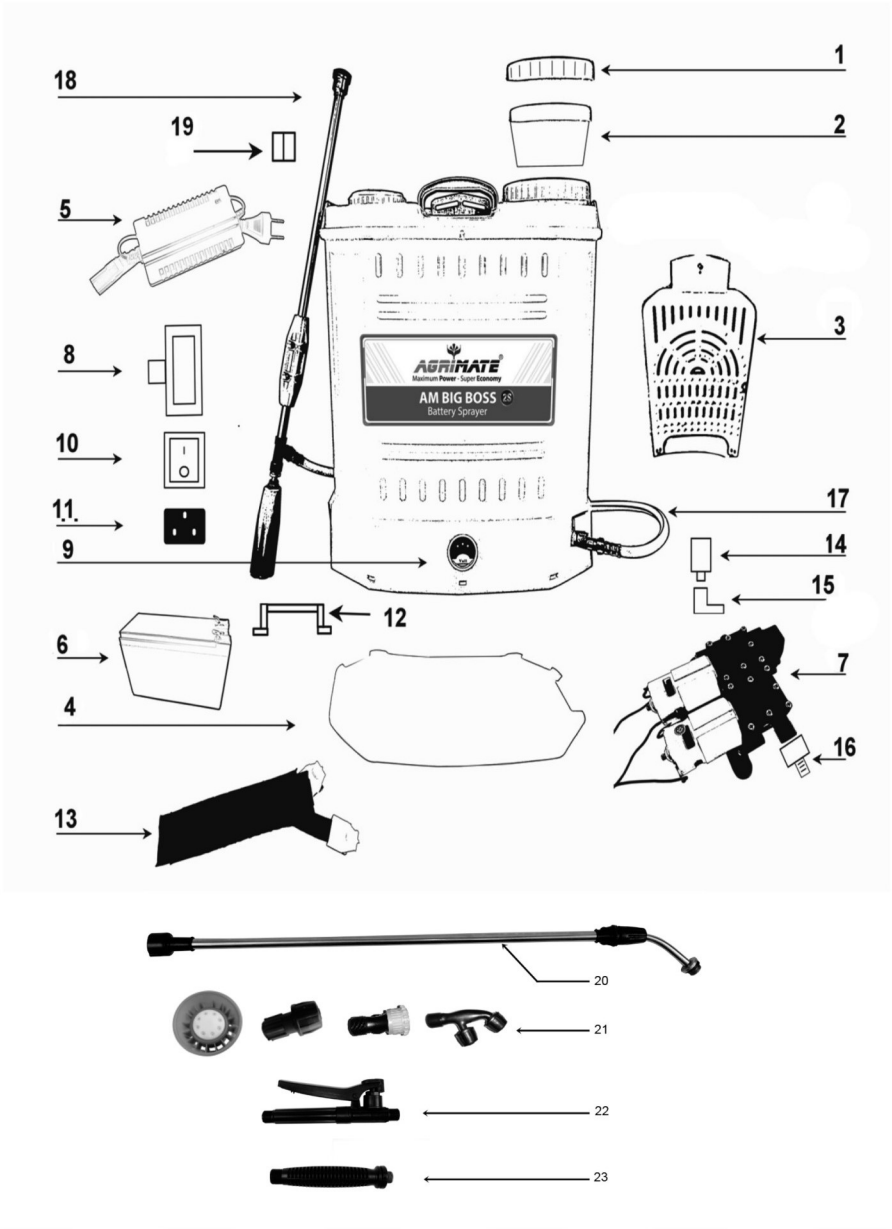
MAINTENANCE

1. Each time after using, the sprayer must be recharged to maintain inside power and to avoid short working life.
2. When doing charge or discharge, please ensure that you have switched off the sprayer to avoid wasting power.
3. After using the sprayer, it should be recharged, If not using the sprayer for a long time, please charge the battery approx once in a month to retain life-span of battery.
4. After using the sprayer, please keep outside and inside of the sprayer clean.
5. Keep the sprayer in the shady place, don't store the sprayer under direct sunlight.
6. Please keep no residue of insecticide, fertilizer or herbicide at bottom of the tank, keep bottom dry so as to avoid corrosion.

SAFETY WARNING

If you are using the sprayer with hazardous or poisonous liquid, use only with directions supplied by the manufacturer of the hazardous or poisonous liquid. Please clean the sprayer thoroughly after use.

DIAGRAM OF AM BIG BOSS - BATTERY SPRAYER



AM BIG BOSS BATTERY SPRAYER - SPARE PARTS

Sl. No.	Part No.	Description
1	AM-BIG-BOSS-01	Tank cap
2	AM-BIG-BOSS-02	Strainer
3	AM-BIG-BOSS-03	Backrest
4	AM-BIG-BOSS-04	Bottom plate
5	AM-BIG-BOSS-05	1.7A Charger
6	AM-BIG-BOSS-06	12V/14AH battery
7	AM-BIG-BOSS-07	Double pump
8	AM-BIG-BOSS-08	Regulator
9	AM-BIG-BOSS-09	Volt meter
10	AM-BIG-BOSS-10	Double switch
11	AM-BIG-BOSS-11	Charging socket
12	AM-BIG-BOSS-12	Battery clip
13	AM-BIG-BOSS-13	Belt
14	AM-BIG-BOSS-14	Inner filter
15	AM-BIG-BOSS-15	Elbow
16	AM-BIG-BOSS-16	Pump outlet connector
17	AM-BIG-BOSS-17	Power hose
18	AM-BIG-BOSS-18	Spraying gun
19	AM-BIG-BOSS-19	Lance clip
20	AM-BIG-BOSS-20	SS LANCE
21	AM-BIG-BOSS-21-1	8holes nozzle
22	AM-BIG-BOSS-21-2	Single nozzle
23	AM-BIG-BOSS-21-3	4holes nozzle
24	AM-BIG-BOSS-21-4	Double nozzle
25	AM-BIG-BOSS-22	Trigger
26	AM-BIG-BOSS-23	Gun handle

Parts list of Big boss



AM BIG BOSS-01
Tank cap



AM BIG BOSS-02
Strainer



AM BIG BOSS-03
Backrest



AM BIG BOSS-04
Bottom plate



AM BIG BOSS-05
1.7A Charger



AM BIG BOSS-06
12V/14AH battery



AM BIG BOSS-07
Double pump



AM BIG BOSS-08
Regulator



AM BIG BOSS-09
Volt meter



AM BIG BOSS-10
Double switch



AM BIG BOSS-11
Charging socket



AM BIG BOSS-12
Battery clip



AM BIG BOSS-13
Belt



AM BIG BOSS-14
Inner filter



AM BIG BOSS-15
Elbow

Parts list of Big boss



AM BIG BOSS-13
Belt



AM BIG BOSS-14
Inner filter



AM BIG BOSS-15
Elbow



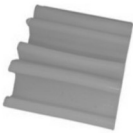
AM BIG BOSS-16
Pump outlet connector



AM BIG BOSS-17
Power hose



AM BIG BOSS-18
Spraying gun



AM BIG BOSS-19
Lance clip



AM-BIG-BOSS-20
SS LANCE



AM-BIG-BOSS-21-1
8holes nozzle



AM-BIG-BOSS-21-2
Single nozzle



AM-BIG-BOSS-21-3
4holes nozzle



AM-BIG-BOSS-21-4
Double nozzle



AM-BIG-BOSS-22 Trigger



AM-BIG-BOSS-23
Gun handle

Warranty Card

CUSTOMER COPY



Purchaser's Name & Address

Product Name

AM BIG BOSS BATTERY SPRAYER

Product Serial No.

Invoice / DN No.

Date of Delivery

Dealer's Office Seal

Dealer Sign _____

Customer Sign. _____

I/We accept the terms and conditions of Warranty as in the Warranty Card.

Warranty Card

DEALER'S COPY



Purchaser's Name & Address

Product Name

AM BIG BOSS BATTERY SPRAYER

Product Serial No.

Invoice / DN No.

Date of Delivery

Dealer's Office Seal

Dealer Sign _____

Customer Sign. _____

I/We accept the terms and conditions of Warranty as in the Warranty Card.

Warranty Card

COMPANY COPY



Purchaser's Name & Address

Product Name

AM BIG BOSS BATTERY SPRAYER

Product Serial No.

Invoice / DN No.

Date of Delivery

Dealer's Office Seal

Dealer Sign _____

Customer Sign. _____

I/We accept the terms and conditions of Warranty as in the Warranty Card.

1. **LIMITED WARRANTY PERIOD** : For a period of six months from the date of Sale / delivery of the product which ever is earlier. 2. **LIMITED WARRANTY OBLIGATION** : Replacement of defective part(s) by authorized dealer are free of charges. If found defective by reasons of defective material / poor workmanship, parts will be replaced and there will be no value re-imbusement. 3. **TERMS & CONDITIONS** : a. Claims under warranty will be accepted on submission of Warranty Card duly filled and stamped by authorized dealer together with the original purchase document. : b. Shipping / transportation / Incidental charges incurred in replacing defective parts under warranty shall be borne by the purchaser.

WARRANTY null & void if

- (i) Lack of maintenance, (ii) Incorrect use of the machine or tampering, (iii) Use of non-genuine spare parts, (iv) Usage of acids, solvents, or any flammable materials, (v) Non-usage of filter water / clear water / soft water & using water above 40°C temperature, (vi) While using the pressure washers to draw water which is contaminated with dust & solvents (eg. paint thinners, gasoline, oil, etc.), (vii) Repair done by unauthorized service people, (viii) Those parts subject to wear & tear due to normal operations and plastic parts, rubber items etc, (ix) Loose connections, faulty electrical fixtures & fluctuations in power supply.
4. Should any failure occur during or after the warranty period, customer does not have the right to interrupt payment / price discount.
5. Incidental or consequential damages like inconvenience commercial loss, loss of tie, mental agony etc.
6. Loss of any nature due to operation or non-operation is not covered under warranty.
7. All free service are at Dealer's service point only.
8. Warranty ceases if service is not done periodically.
9. The attached card should be completed and returned to Ratnagiri Impex Pvt. Ltd. for registration immediately after sale / delivery.
10. The warranty is void unless you register the warranty card with Ratnagiri Impex Pvt. Ltd.
11. The decision of Ratnagiri Impex Pvt. Ltd., in settling the warranty is final in all respects.
12. All disputes are subject to Bangalore Courts Jurisdiction

1. **LIMITED WARRANTY PERIOD** : For a period of six months from the date of Sale / delivery of the product which ever is earlier. 2. **LIMITED WARRANTY OBLIGATION** : Replacement of defective part(s) by authorized dealer are free of charges. If found defective by reasons of defective material / poor workmanship, parts will be replaced and there will be no value re-imbusement. 3. **TERMS & CONDITIONS** : a. Claims under warranty will be accepted on submission of Warranty Card duly filled and stamped by authorized dealer together with the original purchase document. : b. Shipping / transportation / Incidental charges incurred in replacing defective parts under warranty shall be borne by the purchaser.

WARRANTY null & void if

- (i) Lack of maintenance, (ii) Incorrect use of the machine or tampering, (iii) Use of non-genuine spare parts, (iv) Usage of acids, solvents, or any flammable materials, (v) Non-usage of filter water / clear water / soft water & using water above 40°C temperature, (vi) While using the pressure washers to draw water which is contaminated with dust & solvents (eg. paint thinners, gasoline, oil, etc.), (vii) Repair done by unauthorized service people, (viii) Those parts subject to wear & tear due to normal operations and plastic parts, rubber items etc, (ix) Loose connections, faulty electrical fixtures & fluctuations in power supply.
4. Should any failure occur during or after the warranty period, customer does not have the right to interrupt payment / price discount.
5. Incidental or consequential damages like inconvenience commercial loss, loss of tie, mental agony etc.
6. Loss of any nature due to operation or non-operation is not covered under warranty.
7. All free service are at Dealer's service point only.
8. Warranty ceases if service is not done periodically.
9. The attached card should be completed and returned to Ratnagiri Impex Pvt. Ltd. for registration immediately after sale / delivery.
10. The warranty is void unless you register the warranty card with Ratnagiri Impex Pvt. Ltd.
11. The decision of Ratnagiri Impex Pvt. Ltd., in settling the warranty is final in all respects.
12. All disputes are subject to Bangalore Courts Jurisdiction

1. **LIMITED WARRANTY PERIOD** : For a period of six months from the date of Sale / delivery of the product which ever is earlier. 2. **LIMITED WARRANTY OBLIGATION** : Replacement of defective part(s) by authorized dealer are free of charges. If found defective by reasons of defective material / poor workmanship, parts will be replaced and there will be no value re-imbusement. 3. **TERMS & CONDITIONS** : a. Claims under warranty will be accepted on submission of Warranty Card duly filled and stamped by authorized dealer together with the original purchase document. : b. Shipping / transportation / Incidental charges incurred in replacing defective parts under warranty shall be borne by the purchaser.

WARRANTY null & void if

- (i) Lack of maintenance, (ii) Incorrect use of the machine or tampering, (iii) Use of non-genuine spare parts, (iv) Usage of acids, solvents, or any flammable materials, (v) Non-usage of filter water / clear water / soft water & using water above 40°C temperature, (vi) While using the pressure washers to draw water which is contaminated with dust & solvents (eg. paint thinners, gasoline, oil, etc.), (vii) Repair done by unauthorized service people, (viii) Those parts subject to wear & tear due to normal operations and plastic parts, rubber items etc, (ix) Loose connections, faulty electrical fixtures & fluctuations in power supply.
4. Should any failure occur during or after the warranty period, customer does not have the right to interrupt payment / price discount.
5. Incidental or consequential damages like inconvenience commercial loss, loss of tie, mental agony etc.
6. Loss of any nature due to operation or non-operation is not covered under warranty.
7. All free service are at Dealer's service point only.
8. Warranty ceases if service is not done periodically.
9. The attached card should be completed and returned to Ratnagiri Impex Pvt. Ltd. for registration immediately after sale / delivery.
10. The warranty is void unless you register the warranty card with Ratnagiri Impex Pvt. Ltd.
11. The decision of Ratnagiri Impex Pvt. Ltd., in settling the warranty is final in all respects.
12. All disputes are subject to Bangalore Courts Jurisdiction



1st Free Service Coupon

ISO 9001:2015
CERTIFIED COMPANY

FREE SERVICE COUPON (30 Days / 30 hrs (Which ever is earlier))

Model
AM- BIG BOSS BATTERY SPRAYER

Serial Number

PDI Date

Purchase bill no. _____ Date _____

Service No.

Dealer's Office Seal

Dealer Signature.....

Customer Signature.....

Conditions: Operations listed have been performed to my entire satisfaction without any labour charges. Only consumables were charged.



agriculture | horticulture | sericulture | plantations | forestry | garden | health care

WARRANTY AND FREE SERVICE COUPON



2nd Free Service Coupon

ISO 9001:2015
CERTIFIED COMPANY

FREE SERVICE COUPON (60Days / 60hrs (Which ever is earlier))

Model
AM- BIG BOSS BATTERY SPRAYER

Serial Number

PDI Date

Purchase bill no. _____ Date _____

Service No.

Dealer's Office Seal

Dealer Signature.....

Customer Signature.....

Conditions: Operations listed have been performed to my entire satisfaction without any labour charges. Only consumables were charged.



agriculture | horticulture | sericulture | plantations | forestry | garden | health care

WARRANTY AND FREE SERVICE COUPON



3rd Free Service Coupon

ISO 9001:2015
CERTIFIED COMPANY

FREE SERVICE COUPON (90Days /120hrs (Which ever is earlier))

Model
AM- BIG BOSS BATTERY SPRAYER

Serial Number

PDI Date

Purchase bill no. _____ Date _____

Service No.

Dealer's Office Seal

Dealer Signature.....

Customer Signature.....

Conditions: Operations listed have been performed to my entire satisfaction without any labour charges. Only consumables were charged.



agriculture | horticulture | sericulture | plantations | forestry | garden | health care

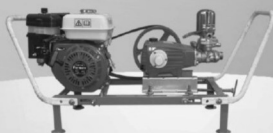
WARRANTY AND FREE SERVICE COUPON

Do's & Don'ts

- Always read the instruction manual supplied along with the equipments and understand the correct installation and operating procedures before attempting to use the equipments.
- It is important to use the personal protection equipments such as head helmet with visor, ear defenders, goggles, safety gloves, cut resistant shoes, trousers and jackets while operating potentially dangerous machines.
- Avoid untrained persons using the equipments. Children must not be allowed to handle these equipments.
- Always use genuine spares and accessories in repairs and usage to derive maximum life of the equipments.
- Always keep the equipments in good working condition to minimise loss of output as well as to reduce the pollution and save the environment.
- Do not use the machine within range of persons unless they wear protective clothing.
- Do not operate the machine when fatigued or under the influence of alcohol or drugs.
- To reduce the risk of injury, close supervision is necessary when a machine is used near children. Equipment shall not be used by children or untrained person.
- Disconnect from the battery power supply before carrying out user maintenance.

Agrimate Army For Pest Control

ANY WHERE - ANY TIME - ANY CROP



AGRIMATE[®]
Maximum Power - Super Economy

Imported & Marketed by
RATNAGIRI IMPEX PVT LTD
Annapurna House, #1/1G, 7th Cross, New Guddadahalli
Mysore Road, Bangalore-560 026
Customer Care: 1800-425-7475
Email Id:ask@agrimate.in



Marketed by:
**ratnagiri
impeX**
BRINGING YOU THE FUTURE... NOW

www.agrimate.in

AN ISO 9001:2015 CERTIFIED COMPANY