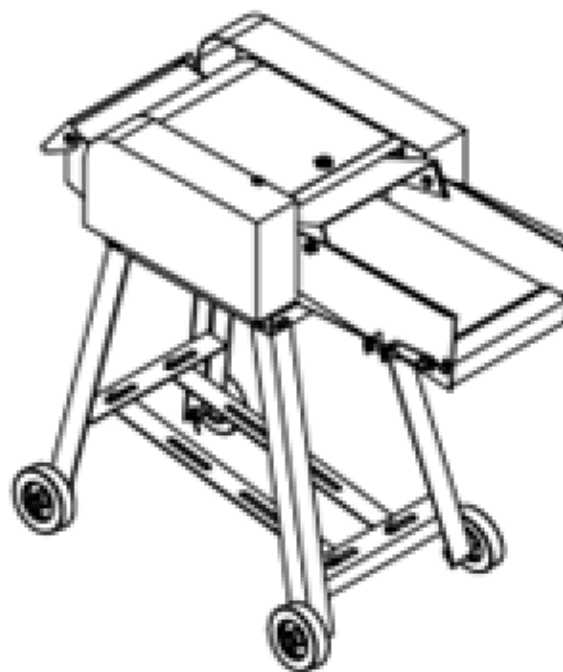


AGRIMATE CHAFF CUTTER - 3HP

AM-CCM-4B3H-CBS-WP ☐

AM-CCM-4B3H-CBL-WP ☐



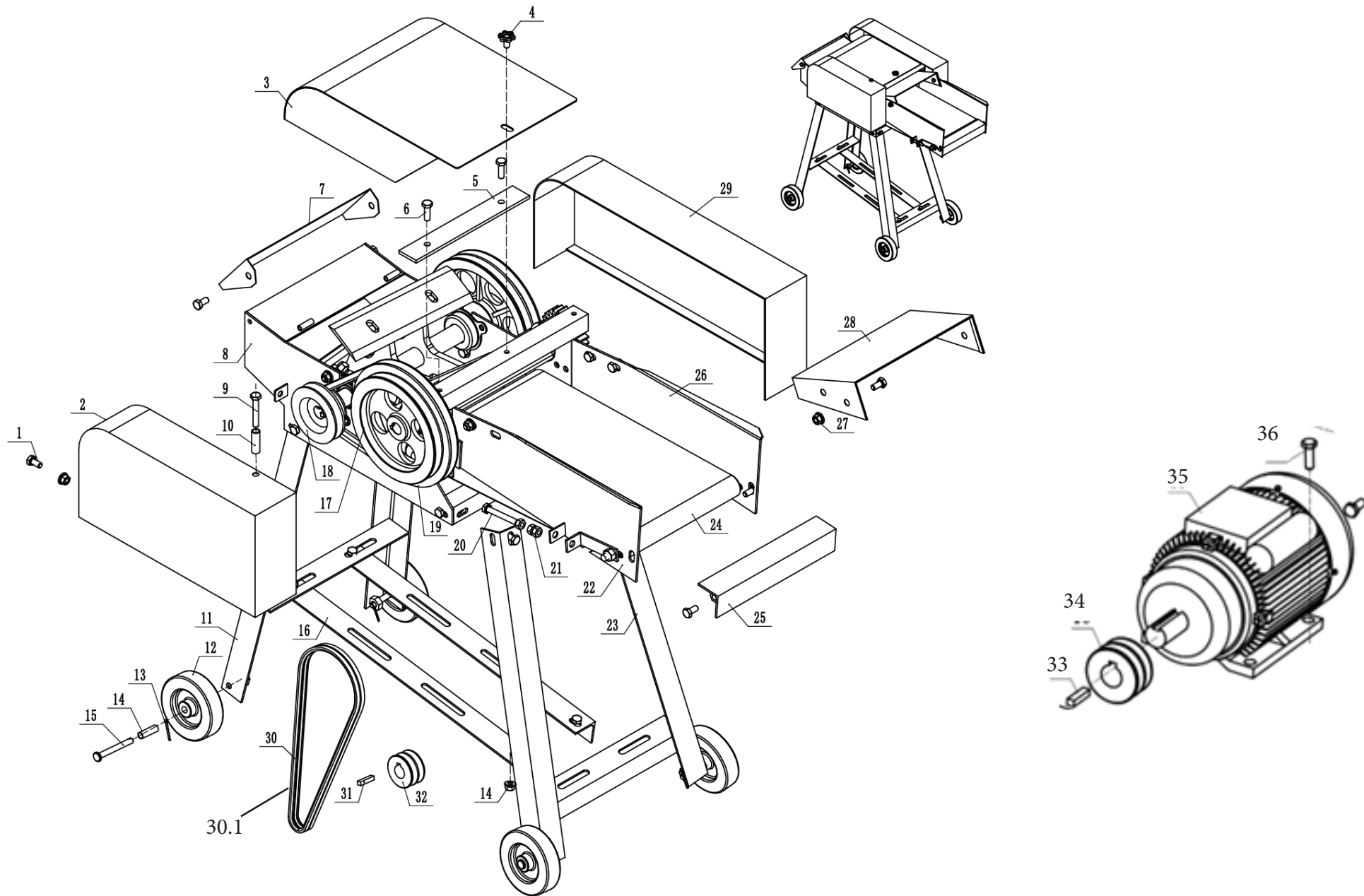
AN ISO 9001 : 2015 CERTIFIED COMPANY

TECHNICAL SPECIFICATIONS

MODEL NAME	CHAFF CUTTER WITH CONVEYOR BELT - 1000MM	CHAFF CUTTER WITH CONVEYOR BELT - 1200MM
MODEL NUMBER	AM-CCM-4B3H-CBS-WP	AM-CCM-4B3H-CBL-WP
POWER	2.2KW/3HP - Copper Winding	2.2KW/3HP - Copper Winding
MOTOR	220v, 50HZ	220v, 50HZ
CAPACITY	UPTO - 800 KG PER HR.	UPTO - 800 KG PER HR.
NO. OF BLADES	4 BLADES	4 BLADES

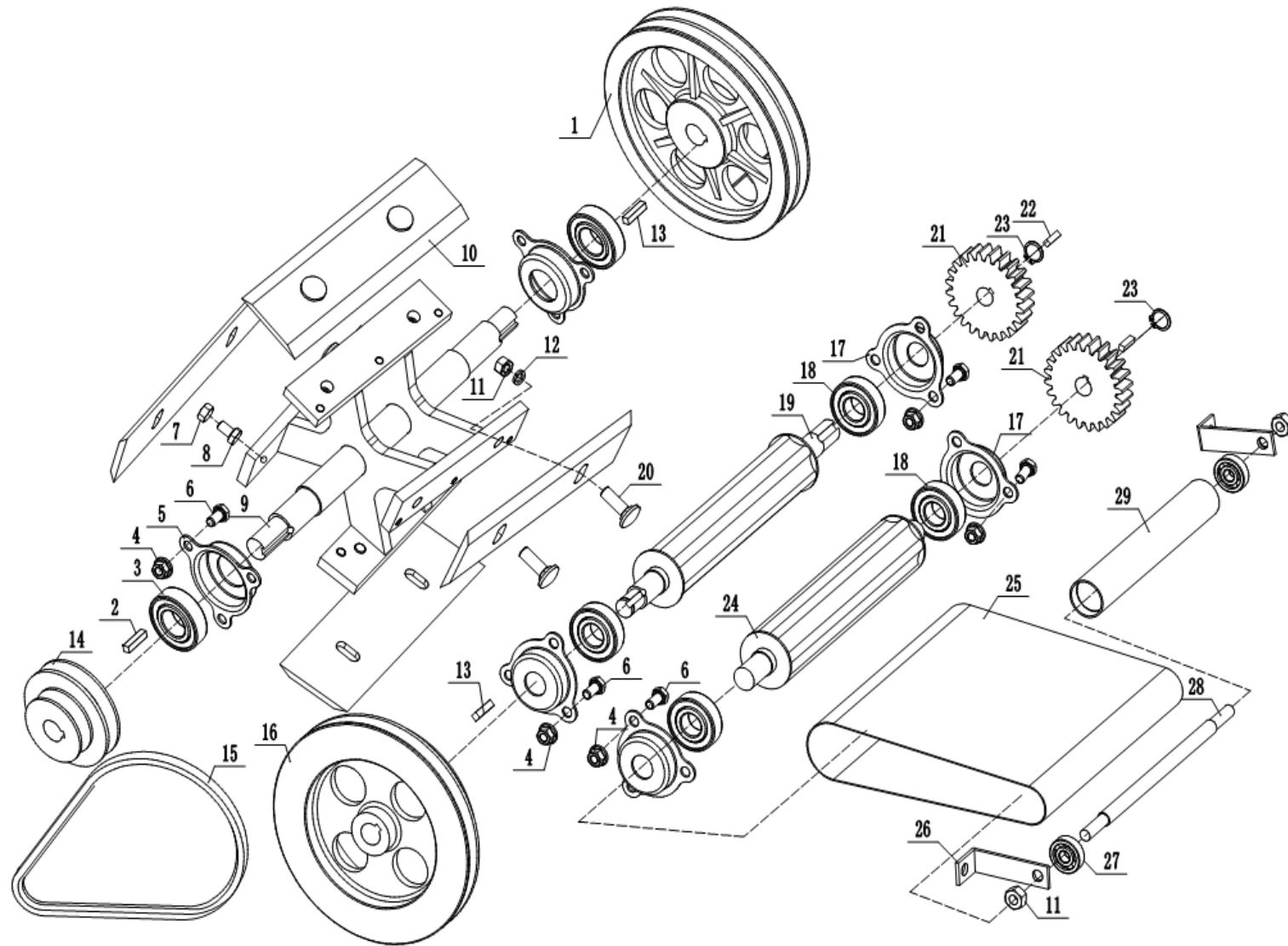
CHAFF CUTTER DIAGRAM & SPARE PARTS LIST

CHAFF CUTTER - A



SL NO.	PART NO.	DESCRIPTION	SL NO.	PART NO.	DESCRIPTION
1	AM-CCM-4B3H-CBL-CA01	Hexagon head bolt with full thread"C" class	20	AM-CCM-4B3H-CBL-CA20	Hexagon head bolt with full thread C class
2	AM-CCM-4B3H-CBL-CA02	Belt guard	21	AM-CCM-4B3H-CBL-CA21	Hexagon nut C class
3	AM-CCM-4B3H-CBL-CA03	welded upper cover	22	AM-CCM-4B3H-CBL-CA22	Conveyor side plate
4	AM-CCM-4B3H-CBL-CA04	Hand wheel	23	AM-CCM-4B3H-CBL-CA23	Front frame foot
5	AM-CCM-4B3H-CBL-CA05	Stationary knife	24	AM-CCM-4B3H-CBL-CA24	Tensioning wheel tube assembly
6	AM-CCM-4B3H-CBL-CA06	Standard spring washer	25	AM-CCM-4B3H-CBL-CA25	Feed Angle steel
7	AM-CCM-4B3H-CBL-CA07	Discharge guard	26	AM-CCM-4B3H-CBL-CA26	Conveyor side plate
8	AM-CCM-4B3H-CBL-CA08	Case welding	27	AM-CCM-4B3H-CBL-CA27	Hexagon nut C class
9	AM-CCM-4B3H-CBL-CA09	Hexagon head bolt with full thread C class	28	AM-CCM-4B3H-CBL-CA28	Feed guard
10	AM-CCM-4B3H-CBL-CA10	Bolt spacer	29	AM-CCM-4B3H-CBL-CA29	Belt guard
11	AM-CCM-4B3H-CBL-CA11	Rear frame foot	30	AM-CCM-4B3H-CBL-CA30	Belt -1200MM
12	AM-CCM-4B3H-CBL-CA12	wheel	30.1	AM-CCM-4B3H-CBL-CA30.1	Belt -1000MM
13	AM-CCM-4B3H-CBL-CA13	Castor inner sleeve	31	AM-CCM-4B3H-CBL-CA31	Plain type flat key-B type
14	AM-CCM-4B3H-CBL-CA14	Cotter pin	32	AM-CCM-4B3H-CBL-CA32	motor belt
15	AM-CCM-4B3H-CBL-CA15	pin B type	33	AM-CCM-4B3H-CBL-CA33	Ordinary flat key - Type B
16	AM-CCM-4B3H-CBL-CA16	Motor Angle	34	AM-CCM-4B3H-CBL-CA34	Motor belt
17	AM-CCM-4B3H-CBL-CA17	Upper feed shaft assembly	35	AM-CCM-4B3H-CBL-CA35	Motor
18	AM-CCM-4B3H-CBL-CA18	Tool shaft assembly	36	AM-CCM-4B3H-CBL-CA36	Hexagon head bolt full thread C grade
19	AM-CCM-4B3H-CBL-CA19	Feed shaft assembly			

CUTTER ASSY - B



SL NO.	PART NO.	DESCRIPTION	SL NO.	PART NO.	DESCRIPTION
1	AM-CCM-4B3H-CBL-CB01	Enter the pulley	16	AM-CCM-4B3H-CBL-CB16	Speed regulating pulley
2	AM-CCM-4B3H-CBL-CB02	Plain type flat key-B type	17	AM-CCM-4B3H-CBL-CB17	Bearing block
3	AM-CCM-4B3H-CBL-CB03	Deep groove ball bearing	18	AM-CCM-4B3H-CBL-CB18	Deep groove ball bearing
4	AM-CCM-4B3H-CBL-CB04	All metal hexagon flange locking nut	19	AM-CCM-4B3H-CBL-CB19	Feed roller
5	AM-CCM-4B3H-CBL-CB05	Bearing block	20	AM-CCM-4B3H-CBL-CB20	Large half round head square neck bolt
6	AM-CCM-4B3H-CBL-CB06	Hexagon head bolt with full thread C class	21	AM-CCM-4B3H-CBL-CB21	Drive gear
7	AM-CCM-4B3H-CBL-CB07	Hexagon nut C class	22	AM-CCM-4B3H-CBL-CB22	Plain type flat key-B type
8	AM-CCM-4B3H-CBL-CB08	Hexagon head bolt with full thread C class	23	AM-CCM-4B3H-CBL-CB23	Elastic retainer for type A shaft
9	AM-CCM-4B3H-CBL-CB09	Cutter shaft welding	24	AM-CCM-4B3H-CBL-CB24	Feed roller
10	AM-CCM-4B3H-CBL-CB10	slash	25	AM-CCM-4B3H-CBL-CB25	Conveyor belt
11	AM-CCM-4B3H-CBL-CB11	Hexagon nut C class	26	AM-CCM-4B3H-CBL-CB26	Pull size
12	AM-CCM-4B3H-CBL-CB12	Standard elastic washer	27	AM-CCM-4B3H-CBL-CB27	Deep groove ball bearing
13	AM-CCM-4B3H-CBL-CB13	Plain type flat key-B type	28	AM-CCM-4B3H-CBL-CB28	Tension shaft
14	AM-CCM-4B3H-CBL-CB14	Output pulley	29	AM-CCM-4B3H-CBL-CB29	Tension tube
15	AM-CCM-4B3H-CBL-CB15	comment V belt			

INSPECTION & MAINTAINANCE

For safety use, make sure the machine is cleaned every three months. Before working, make sure to inspect the filter and the nozzle and ensure there is no impurity. After working, make sure there is no water in the pump and the hose.

If the machine needs to be repaired in the guarantee period, please return the machine to the shop. You need to provide the certificate of purchase on order to repair or get the substitute.

Before packing, the machine should be cleaned, then use closed packaging, packaging should be firm. Store the machine in dry place.

For transportation safety. The machine should comply with ISTA.

Do not dispose of electrical machines as unsorted municipal waste, use separate collection facilities.

If electrical machines are disposed of in landfills or dumps, hazardous substances can leak into the ground water and get into the food chain, damaging your health and well being.

When replacing old machines with new ones, the retailer is legally obligated to take back your old machine for disposals at least free of charge.

WARRANTY CARD

CUSTOMER COPY

DATE _____	DATE OF DELIVERY _____	DEALERS OFFICIAL SEAL _____	DEALERS SIGN _____
PURCHASERS NAME & ADDRESS _____ _____ _____	<div>CUSTOMER SIGN</div>	<div></div>	
PRODUCT NAME	PRODUCT SERIAL NO.	INVOICE/DN NO.	
<div>CHAFF CUTTER- AM-CCM-4B3H-CBS-WP/AM-CCM-4B3H-CBL-WP</div>	<div></div>	<div></div>	

I/Will accept the terms and conditions of warranty as in the warranty card

DEALERS COPY

DATE _____	DATE OF DELIVERY _____	DEALERS OFFICIAL SEAL _____	DEALERS SIGN _____
PURCHASERS NAME & ADDRESS _____ _____ _____	<div>CUSTOMER SIGN</div>	<div></div>	
PRODUCT NAME	PRODUCT SERIAL NO.	INVOICE/DN NO.	
<div>CHAFF CUTTER- AM-CCM-4B3H-CBS-WP/AM-CCM-4B3H-CBL-WP</div>	<div></div>	<div></div>	

I/Will accept the terms and conditions of warranty as in the warranty card

COMPANY COPY

DATE _____	DATE OF DELIVERY _____	DEALERS OFFICIAL SEAL _____	DEALERS SIGN _____
PURCHASERS NAME & ADDRESS _____ _____ _____	<div>CUSTOMER SIGN</div>	<div></div>	
PRODUCT NAME	PRODUCT SERIAL NO.	INVOICE/DN NO.	
<div>CHAFF CUTTER- AM-CCM-4B3H-CBS-WP/AM-CCM-4B3H-CBL-WP</div>	<div></div>	<div></div>	

I/Will accept the terms and conditions of warranty as in the warranty card

1. LIMITED WARRANTY PERIOD : For a period of six months from the date of Sale / delivery of the product which ever is earlier. 2. LIMITED WARRANTY OBLIGATION : Replacement of defective part(s) by authorized dealer are free of charges. If found defective by reasons of defective material / poor workmanship, parts will be replaced and there will be no value re-imbursement. 3. TERMS & CONDITIONS : a. Claims under warranty will be accepted on submission of Warranty Card duly filled and stamped by authorized dealer together with the original purchase document. : b. Shipping / transportation / Incidental charges incurred in replacing defective parts under warranty shall be borne by the purchaser

WARRANTY null & void if
(i) Lack of maintenance, (ii) Incorrect use of the machine or tampering, (iii) Use of non-genuine spare parts, (iv) Usage of acids, solvents, or any flammable materials, (v) Non-usage of filter water / clear water / soft water & using water above 40°C temperature, (vi) While using the pressure washers to draw water which is contaminated with dust & solvents (eg. paint thinners, gasoline, oil, etc.), (vii) Repair done by unauthorized service people, (viii) Those parts subject to wear & tear due to normal operations and plastic parts, rubber items etc, (ix) Loose connections, faulty electrical fixtures & fluctuations in power supply.
4. Should any failure occur during or after the warranty period, customer does not have the right to interrupt payment / price discount.
5. Incidental or consequential damages like inconvenience commercial loss, loss of tie, mental agony etc.
6. Loss of any nature due to operation or non-operation is not covered under warranty.
7. All free service are at Dealer's service point only.
8. Warranty ceases if service is not done periodically.
9. The attached card should be completed and returned to Ratnagiri Impex Pvt. Ltd. for registration immediately after sale / delivery.
10. The warranty is void unless you register the warranty card with Ratnagiri Impex Pvt. Ltd.
11. The decision of Ratnagiri Impex Pvt. Ltd., in settling the warranty is final in all respects.
12. All disputes are subject to Bangalore Courts Jurisdiction

1. LIMITED WARRANTY PERIOD : For a period of six months from the date of Sale / delivery of the product which ever is earlier. 2. LIMITED WARRANTY OBLIGATION : Replacement of defective part(s) by authorized dealer are free of charges. If found defective by reasons of defective material / poor workmanship, parts will be replaced and there will be no value re-imbursement. 3. TERMS & CONDITIONS : a. Claims under warranty will be accepted on submission of Warranty Card duly filled and stamped by authorized dealer together with the original purchase document. : b. Shipping / transportation / Incidental charges incurred in replacing defective parts under warranty shall be borne by the purchaser.
WARRANTY null & void if
(i) Lack of maintenance, (ii) Incorrect use of the machine or tampering, (iii) Use of non-genuine spare parts, (iv) Usage of acids, solvents, or any flammable materials, (v) Non-usage of filter water / clear water / soft water & using water above 40°C temperature, (vi) While using the pressure washers to draw water which is contaminated with dust & solvents (eg. paint thinners, gasoline, oil, etc.), (vii) Repair done by unauthorized service people, (viii) Those parts subject to wear & tear due to normal operations and plastic parts, rubber items etc, (ix) Loose connections, faulty electrical fixtures & fluctuations in power supply.
4. Should any failure occur during or after the warranty period, customer does not have the right to interrupt payment / price discount.
5. Incidental or consequential damages like inconvenience commercial loss, loss of tie, mental agony etc.
6. Loss of any nature due to operation or non-operation is not covered under warranty.
7. All free service are at Dealer's service point only.
8. Warranty ceases if service is not done periodically.
9. The attached card should be completed and returned to Ratnagiri Impex Pvt. Ltd. for registration immediately after sale / delivery.
10. The warranty is void unless you register the warranty card with Ratnagiri Impex Pvt. Ltd.
11. The decision of Ratnagiri Impex Pvt. Ltd., in settling the warranty is final in all respects.
12. All disputes are subject to Bangalore Courts Jurisdiction

1. LIMITED WARRANTY PERIOD : For a period of six months from the date of Sale / delivery of the product which ever is earlier. 2. LIMITED WARRANTY OBLIGATION : Replacement of defective part(s) by authorized dealer are free of charges. If found defective by reasons of defective material / poor workmanship, parts will be replaced and there will be no value re-imbursement. 3. TERMS & CONDITIONS : a. Claims under warranty will be accepted on submission of Warranty Card duly filled and stamped by authorized dealer together with the original purchase document. : b. Shipping / transportation / Incidental charges incurred in replacing defective parts under warranty shall be borne by the purchaser.
WARRANTY null & void if
(i) Lack of maintenance, (ii) Incorrect use of the machine or tampering, (iii) Use of non-genuine spare parts, (iv) Usage of acids, solvents, or any flammable materials, (v) Non-usage of filter water / clear water / soft water & using water above 40°C temperature, (vi) While using the pressure washers to draw water which is contaminated with dust & solvents (eg. paint thinners, gasoline, oil, etc.), (vii) Repair done by unauthorized service people, (viii) Those parts subject to wear & tear due to normal operations and plastic parts, rubber items etc, (ix) Loose connections, faulty electrical fixtures & fluctuations in power supply.
4. Should any failure occur during or after the warranty period, customer does not have the right to interrupt payment / price discount.
5. Incidental or consequential damages like inconvenience commercial loss, loss of tie, mental agony etc.
6. Loss of any nature due to operation or non-operation is not covered under warranty.
7. All free service are at Dealer's service point only.
8. Warranty ceases if service is not done periodically.
9. The attached card should be completed and returned to Ratnagiri Impex Pvt. Ltd. for registration immediately after sale / delivery.
10. The warranty is void unless you register the warranty card with Ratnagiri Impex Pvt. Ltd.
11. The decision of Ratnagiri Impex Pvt. Ltd., in settling the warranty is final in all respects.
12. All disputes are subject to Bangalore Courts Jurisdiction

FREE SERVICE COUPON (30DAYS/30HRS. WHICHEVER IS EARLIER)

MODEL	AM-CCM-4B3H-CBS-WP/ AM-CCM-4B3H-CBL-WP	SERIAL NUMBER	
PDI DATE	SERVICE NO.	PURCHASE BILL NO.	DATE
DEALERS OFFICE SEAL	OPERATIONS		
	<div> 1. Check and test the fuel mixture 3. Check , clean and adjust the spark plug 5. Check and sparken the cutting tools 7. Start and check the noise, vibration, loosen etc.. </div> <div> 2. check and clean the air filter 4. Check and adjust the carburetor tuning 6. Product familiarisation on usage 8. Routine maintenance and shortage. </div>		

FREE SERVICE COUPON (30DAYS/30HRS. WHICHEVER IS EARLIER)

MODEL	AM-CCM-4B3H-CBS-WP/ AM-CCM-4B3H-CBL-WP	SERIAL NUMBER	
PDI DATE	SERVICE NO.	PURCHASE BILL NO.	DATE
DEALERS OFFICE SEAL	OPERATIONS		
	<div> 1. Check and test the fuel mixture 3. Check , clean and adjust the spark plug 5. Check and sparken the cutting tools 7. Start and check the noise, vibration, loosen etc.. </div> <div> 2. check and clean the air filter 4. Check and adjust the carburetor tuning 6. Product familiarisation on usage 8. Routine maintenance and shortage. </div>		

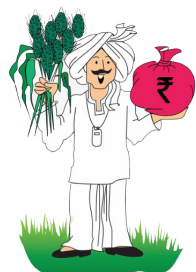
FREE SERVICE COUPON (30DAYS/30HRS. WHICHEVER IS EARLIER)

MODEL	AM-CCM-4B3H-CBS-WP/ AM-CCM-4B3H-CBL-WP	SERIAL NUMBER	
PDI DATE	SERVICE NO.	PURCHASE BILL NO.	DATE
DEALERS OFFICE SEAL	OPERATIONS		
	<div> 1. Check and test the fuel mixture 3. Check , clean and adjust the spark plug 5. Check and sparken the cutting tools 7. Start and check the noise, vibration, loosen etc.. </div> <div> 2. check and clean the air filter 4. Check and adjust the carburetor tuning 6. Product familiarisation on usage 8. Routine maintenance and shortage. </div>		

DOS & DONTs

1. Always read the instruction manual supplied along with the equipments and understand the correct installation and operating procedures before attempting to use the equipments.
2. It is important to use the personal protection equipments such as head helmet with visor, ear defenders, goggles, safety gloves, cut resistant shoes, trousers and jackets while operating potentially dangerous machines
3. Avoid untrained persons using the equipments. Children must not be allowed to handle these equipments
4. Always use genuine spares and accessories in repairs and usage to derive maximum life of the equipments.
5. Always keep the equipments in good working condition to minimize loss of output as well as to reduce the pollution and save the environment
6. Do not use the machine within range of persons unless they wear protective clothing
7. Do not operate the machine when fatigued or under the influence of alcohol or drugs
8. When the machine is running, please maintain a constant water supply. Without water circulation will damage the sealing rings of the machine.
9. For more query kindly contact for our Service Center/Dealer/ franchise

AGRIMATE MULTI PURPOSE EQUIPMENT ANYWHERE - ANYTIME - ANY CROP



**ratnagiri[®]
impex**

BRINGING YOU THE FUTURE... NOW

IMPORTED & MARKETING BY,

RATNAGIRI IMPEX PVT., LTD.,

Annapurna House, #1 / 1G, 7th Cross, New

Guddadahalli Mysore Road, Bangalore - 560 026

Missed Call : 7393 938 938 Email: ask@agrimart.in