

AGRIMATE KNAPSACK POWER SPRAYER AM-K139S-25TG-4S-PRO

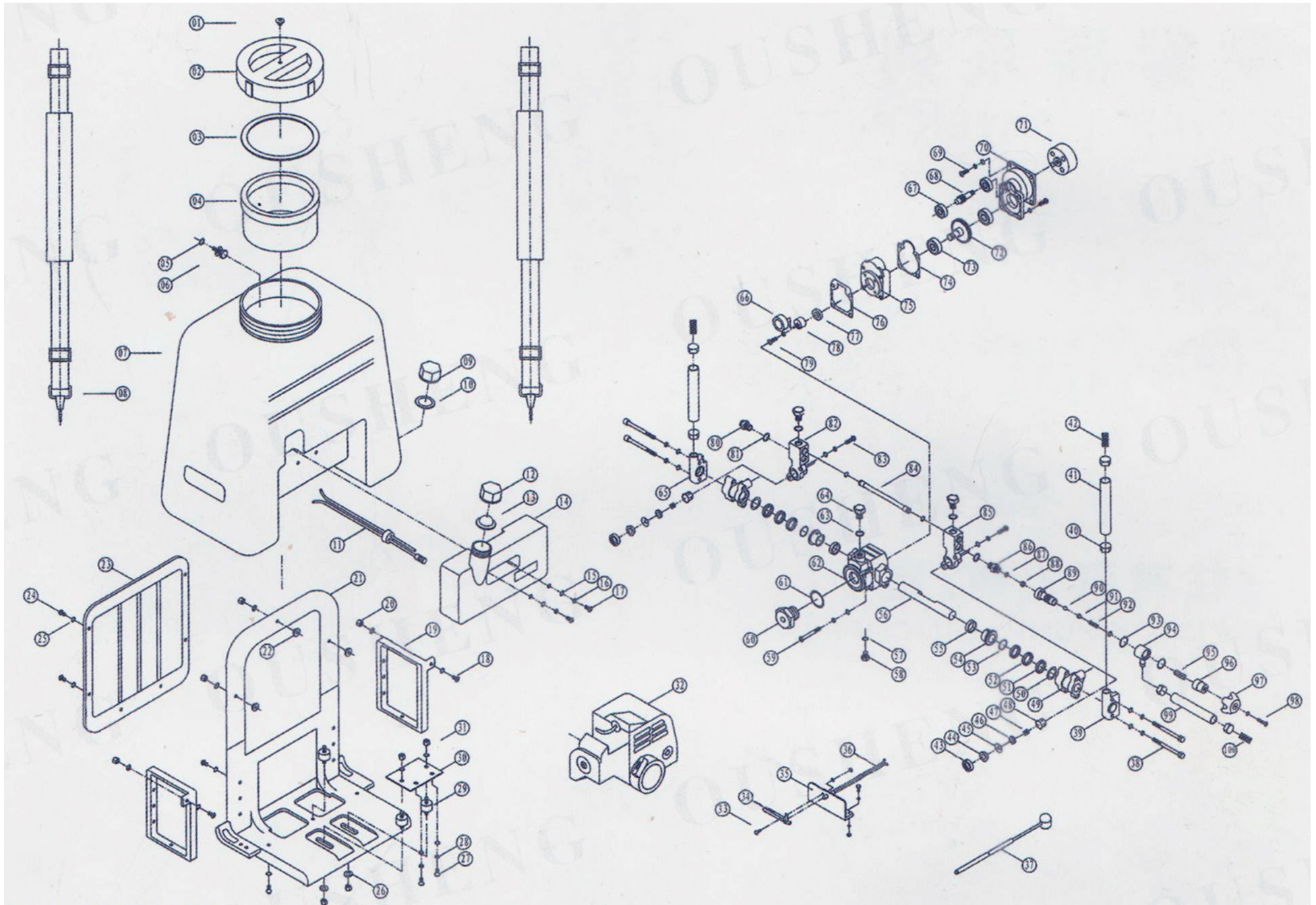


AN ISO 9001 : 2015 CERTIFIED COMPANY

TECHNICAL SPECIFICATIONS

Model	AM-K139S-25TG-4S-PRO
Engine	AM-139F
Engine type	4-stroke Air cooled, Single Cylinder
Displacement	31cc
Power	0.75KW/6500RPM/1HP
Carburetor	Diaphragm type
Start system	Recoil starter
Fuel tank capacity	0.75L

TANK DIAGRAM & PARTS LIST OF AM-K139S-25TG-4S-PRO



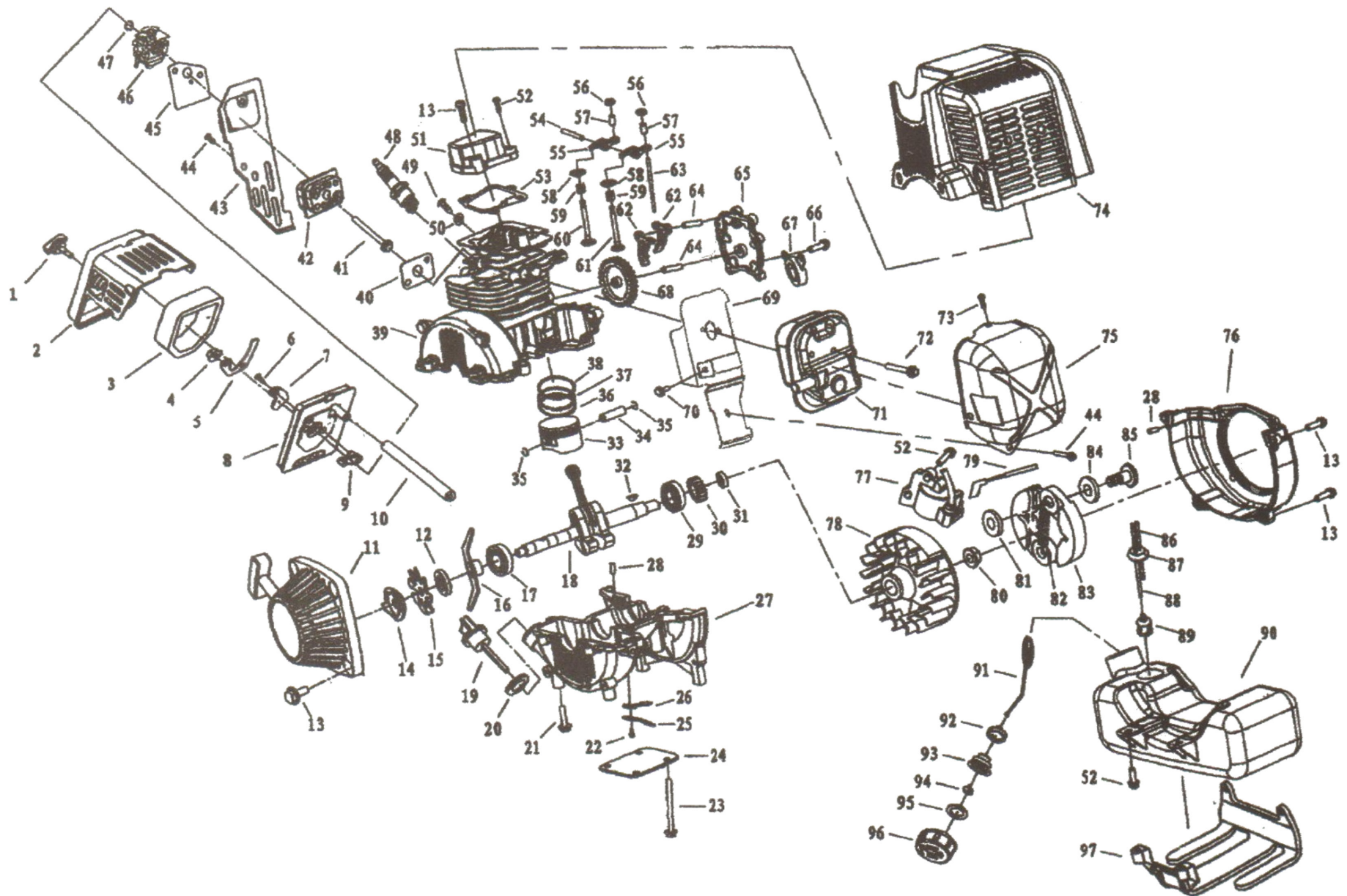
TANK DIAGRAM & PARTS LIST OF AM-K139S-25TG-4S-PRO

SL NO.	PART NO.	DESCRIPTION	SL NO.	PART NO.	DESCRIPTION
1	AM-K139S-T01	Ventilating plug	17	AM-K139S-T17	Cross screw
2	AM-K139S-T02	Tank cover	18	AM-K139S-T18	Cross screw
3	AM-K139S-T03	Tank cover oil seal	19	AM-K139S-T19	Packing seat
4	AM-K139S-T04	Filler	20	AM-K139S-T20	Nut
5	AM-K139S-T05	O-ring	21	AM-K139S-T21	Base seat
6	AM-K139S-T06	Washer, nut	22	AM-K139S-T22	Nut
7	AM-K139S-T07	Tank	23	AM-K139S-T23	Back pad
8	AM-K139S-T08	Belt	24	AM-K139S-T24	Screw
9	AM-K139S-T09	Draining nut	25	AM-K139S-T25	Big gasket
10	AM-K139S-T10	Draining oil seal	26	AM-K139S-T26	Cross screw
11	AM-K139S-T11	Oil pipe	27	AM-K139S-T27	Spring gasket
12	AM-K139S-T12	Oil tank cover	28	AM-K139S-T28	Absorber
13	AM-K139S-T13	Oil seal	29	AM-K139S-T29	Engine fixed seat
14	AM-K139S-T14	Oil tank	30	AM-K139S-T30	Turret nut
15	AM-K139S-T15	Gasket	31	AM-K139S-T31	Engine
16	AM-K139S-T16	Gasket	32	AM-K139S-T32	Cross screw

TANK DIAGRAM & PARTS LIST OF AM-K139S-25TG-4S-PRO

SL NO.	PART NO.	DESCRIPTION	SL NO.	PART NO.	DESCRIPTION
33	AM-K139S-T33	Accelerator	49	AM-K139S-T49	Seal
34	AM-K139S-T34	O-ring	50	AM-K139S-T50	Ear shaft
35	AM-K139S-T35	Crاند	51	AM-K139S-T51	Accelerator switch fixed seat
36	AM-K139S-T36	Oil seal	52	AM-K139S-T52	Stopping switch
37	AM-K139S-T37	Piston	53	AM-K139S-T53	Throttle cable
38	AM-K139S-T38	O-ring	54	AM-K139S-T54	Screw
39	AM-K139S-T39	Draining screw plug	55	AM-K139S-T55	Left suction metal
40	AM-K139S-T40	Cross screw	56	AM-K139S-T56	Fastening ring
41	AM-K139S-T41	Oil gauge	57	AM-K139S-T57	Suction hose
42	AM-K139S-T42	Oil gauge o-ring			
43	AM-K139S-T43	Pump body			
44	AM-K139S-T44	O-ring			
45	AM-K139S-T45	Screw			
46	AM-K139S-T46	Right suction metal			
47	AM-K139S-T47	Bearing			
48	AM-K139S-T48	Bearing			

ENGINE DIAGRAM & PARTS LIST OF AM-K139S-25TG-4S-PRO



ENGINE DIAGRAM & PARTS LIST OF AM-K139S-25TG-4S-PRO

SL NO.	PART NO.	DESCRIPTION	SL NO.	PART NO.	DESCRIPTION
1	AM-K139S-E01	Intake Valve Plug	17	AM-K139S-E17	Exhaust Valve Spring
2	AM-K139S-E02	Screw	18	AM-K139S-E18	Exhaust Valve Seat
3	AM-K139S-E03	Nameplate	19	AM-K139S-E19	Screw
4	AM-K139S-E04	Screw	20	AM-K139S-E20	Plunger
5	AM-K139S-E05	Outer Hex Nut	21	AM-K139S-E21	Plunger Seal
6	AM-K139S-E06	Large Washer	22	AM-K139S-E22	Plunger Spring
7	AM-K139S-E07	Spring Washer	23	AM-K139S-E23	Plunger Seat
8	AM-K139S-E08	Intake Valve	24	AM-K139S-E24	Water Inlet Joint
9	AM-K139S-E09	Intake Valve O-Ring	25	AM-K139S-E25	Screw
10	AM-K139S-E10	Intake Valve Seal	26	AM-K139S-E26	Seal Ring
11	AM-K139S-E11	Intake Valve Spring	27	AM-K139S-E27	Drain Joint
12	AM-K139S-E12	Intake Valve Seat	28	AM-K139S-E28	Pump Body
13	AM-K139S-E13	Screw	29	AM-K139S-E29	Screw
14	AM-K139S-E14	Exhaust Valve	30	AM-K139S-E30	Screw
15	AM-K139S-E15	Exhaust Valve O-Ring	31	AM-K139S-E31	Screw
16	AM-K139S-E16	Exhaust Valve Seal	32	AM-K139S-E32	Seal Gasket

ENGINE DIAGRAM & PARTS LIST OF AM-K139S-25TG-4S-PRO

SL NO.	PART NO.	DESCRIPTION	SL NO.	PART NO.	DESCRIPTION
33	AM-K139S-E33	Pump Cover	49	AM-K139S-E49	V-Ring Seal
34	AM-K139S-E34	Seal Ring	50	AM-K139S-E50	O-Ring
35	AM-K139S-E35	Seal Ring	51	AM-K139S-E51	Seal Ring
36	AM-K139S-E36	Seal Ring	52	AM-K139S-E52	Oil Gauge
37	AM-K139S-E37	Safety Valve	53	AM-K139S-E53	Oil Seal
38	AM-K139S-E38	Valve Seat	54	AM-K139S-E54	Ball
39	AM-K139S-E39	Seal Ring	55	AM-K139S-E55	Ball Seat
40	AM-K139S-E40	Seal Ring	56	AM-K139S-E56	Oil Level Gauge
41	AM-K139S-E41	Screw	57	AM-K139S-E57	Oil Plug
42	AM-K139S-E42	Overflow Valve	58	AM-K139S-E58	Seal Ring
43	AM-K139S-E43	Seal Ring	59	AM-K139S-E59	Return Pipe
44	AM-K139S-E44	Seal Ring	60	AM-K139S-E60	Return Valve
45	AM-K139S-E45	Overflow Valve Body	61	AM-K139S-E61	Screw
46	AM-K139S-E46	Spring	62	AM-K139S-E62	Bearing
47	AM-K139S-E47	Bracket	63	AM-K139S-E63	Bearing
48	AM-K139S-E48	V-Ring Seal	64	AM-K139S-E64	Bearing

ENGINE DIAGRAM & PARTS LIST OF AM-K139S-25TG-4S-PRO

SL NO.	PART NO.	DESCRIPTION	SL NO.	PART NO.	DESCRIPTION
65	AM-K139S-E65	Gear Shaft	81	AM-K139S-E81	Overflow Pipe
66	AM-K139S-E66	Gasket A	82	AM-K139S-E82	Overflow Pipe Spring
67	AM-K139S-E67	Gasket B			
68	AM-K139S-E68	Gasket C			
69	AM-K139S-E69	Gasket D			
70	AM-K139S-E70	Gasket E			
71	AM-K139S-E71	Cross Screw			
72	AM-K139S-E72	Flywheel			
73	AM-K139S-E73	Centrifugal Switch			
74	AM-K139S-E74	Charging Meter			
75	AM-K139S-E75	Flywheel Nut			
76	AM-K139S-E76	Flywheel Key			
77	AM-K139S-E77	High-Pressure Pipe			
78	AM-K139S-E78	High-Pressure Pipe Joint			
79	AM-K139S-E79	Suction Pipe			
80	AM-K139S-E80	Suction Pipe Joint			

Safety and Maintenance Guidelines

- Pre-Use Inspection: Before operation, check the filter and nozzle for impurities and ensure they are clean.
- Regular Cleaning: Clean the machine every three months to ensure optimal performance and safety.
- Post-Use Maintenance: After use, remove any remaining water from the pump and hose to prevent damage.
- Repairs and Warranty: If repairs are required during the warranty period, return the machine to the service centre along with the invoice copy for servicing or replacement.
- Storage and Packaging: Before storing, clean the machine thoroughly. Use secure, closed packaging and store it in a dry place.
- Transportation Compliance: Ensure the machine meets ISTA (International Safe Transit Association) standards for safe transport.
- **Proper Disposal:**
 - o Do not dispose of electrical machines as unsorted municipal waste. Use designated collection facilities.
 - o Improper disposal in landfills or dumps may release hazardous substances into groundwater, contaminating the environment and posing health risks.
 - o When replacing an old machine, retailers are legally required to accept and dispose of it free of charge.

WARRANTY CARD

CUSTOMER COPY

DATE _____	DATE OF DELIVERY _____	DEALERS OFFICIAL SEAL _____	DEALERS SIGN _____
PURCHASERS NAME & ADDRESS _____ _____ _____	<div>CUSTOMER SIGN</div>	<div></div>	
PRODUCT NAME	PRODUCT SERIAL NO.	INVOICE/DN NO.	
<div></div>	<div></div>	<div></div>	
I/Will accept the terms and conditions of warranty as in the warranty card			

DEALERS COPY

DATE _____	DATE OF DELIVERY _____	DEALERS OFFICIAL SEAL _____	DEALERS SIGN _____
PURCHASERS NAME & ADDRESS _____ _____ _____	<div>CUSTOMER SIGN</div>	<div></div>	
PRODUCT NAME	PRODUCT SERIAL NO.	INVOICE/DN NO.	
<div></div>	<div></div>	<div></div>	
I/Will accept the terms and conditions of warranty as in the warranty card			

COMPANY COPY

DATE _____	DATE OF DELIVERY _____	DEALERS OFFICIAL SEAL _____	DEALERS SIGN _____
PURCHASERS NAME & ADDRESS _____ _____ _____	<div>CUSTOMER SIGN</div>	<div></div>	
PRODUCT NAME	PRODUCT SERIAL NO.	INVOICE/DN NO.	
<div></div>	<div></div>	<div></div>	
I/Will accept the terms and conditions of warranty as in the warranty card			

1. LIMITED WARRANTY PERIOD : For a period of six months from the date of Sale / delivery of the product which ever is earlier. 2. LIMITED WARRANTY OBLIGATION : Replacement of defective part(s) by authorized dealer are free of charges. If found defective by reasons of defective material / poor workmanship, parts will be replaced and there will be no value re-imbursement. 3. TERMS & CONDITIONS : a. Claims under warranty will be accepted on submission of Warranty Card duly filled and stamped by authorized dealer together with the original purchase document. : b. Shipping / transportation / Incidental charges incurred in replacing defective parts under warranty shall be borne by the purchaser

WARRANTY null & void if
(i) Lack of maintenance, (ii) Incorrect use of the machine or tampering, (iii) Use of non-genuine spare parts, (iv) Usage of acids, solvents, or any flammable materials, (v) Non-usage of filter water / clear water / soft water & using water above 40°C temperature, (vi) While using the pressure washers to draw water which is contaminated with dust & solvents (eg. paint thinners, gasoline, oil, etc.), (vii) Repair done by unauthorized service people, (viii) Those parts subject to wear & tear due to normal operations and plastic parts, rubber items etc, (ix) Loose connections, faulty electrical fixtures & fluctuations in power supply.
4. Should any failure occur during or after the warranty period, customer does not have the right to interrupt payment / price discount.
5. Incidental or consequential damages like inconvenience commercial loss, loss of tie, mental agony etc.
6. Loss of any nature due to operation or non-operation is not covered under warranty.
7. All free service are at Dealer's service point only.
8. Warranty ceases if service is not done periodically.
9. The attached card should be completed and returned to Ratnagiri Impex Pvt. Ltd. for registration immediately after sale / delivery.
10. The warranty is void unless you register the warranty card with Ratnagiri Impex Pvt. Ltd.
11. The decision of Ratnagiri Impex Pvt. Ltd., in settling the warranty is final in all respects.
12. All disputes are subject to Bangalore Courts Jurisdiction

1. LIMITED WARRANTY PERIOD : For a period of six months from the date of Sale / delivery of the product which ever is earlier. 2. LIMITED WARRANTY OBLIGATION : Replacement of defective part(s) by authorized dealer are free of charges. If found defective by reasons of defective material / poor workmanship, parts will be replaced and there will be no value re-imbursement. 3. TERMS & CONDITIONS : a. Claims under warranty will be accepted on submission of Warranty Card duly filled and stamped by authorized dealer together with the original purchase document. : b. Shipping / transportation / Incidental charges incurred in replacing defective parts under warranty shall be borne by the purchaser.
WARRANTY null & void if
(i) Lack of maintenance, (ii) Incorrect use of the machine or tampering, (iii) Use of non-genuine spare parts, (iv) Usage of acids, solvents, or any flammable materials, (v) Non-usage of filter water / clear water / soft water & using water above 40°C temperature, (vi) While using the pressure washers to draw water which is contaminated with dust & solvents (eg. paint thinners, gasoline, oil, etc.), (vii) Repair done by unauthorized service people, (viii) Those parts subject to wear & tear due to normal operations and plastic parts, rubber items etc, (ix) Loose connections, faulty electrical fixtures & fluctuations in power supply.
4. Should any failure occur during or after the warranty period, customer does not have the right to interrupt payment / price discount.
5. Incidental or consequential damages like inconvenience commercial loss, loss of tie, mental agony etc.
6. Loss of any nature due to operation or non-operation is not covered under warranty.
7. All free service are at Dealer's service point only.
8. Warranty ceases if service is not done periodically.
9. The attached card should be completed and returned to Ratnagiri Impex Pvt. Ltd. for registration immediately after sale / delivery.
10. The warranty is void unless you register the warranty card with Ratnagiri Impex Pvt. Ltd.
11. The decision of Ratnagiri Impex Pvt. Ltd., in settling the warranty is final in all respects.
12. All disputes are subject to Bangalore Courts Jurisdiction

1. LIMITED WARRANTY PERIOD : For a period of six months from the date of Sale / delivery of the product which ever is earlier. 2. LIMITED WARRANTY OBLIGATION : Replacement of defective part(s) by authorized dealer are free of charges. If found defective by reasons of defective material / poor workmanship, parts will be replaced and there will be no value re-imbursement. 3. TERMS & CONDITIONS : a. Claims under warranty will be accepted on submission of Warranty Card duly filled and stamped by authorized dealer together with the original purchase document. : b. Shipping / transportation / Incidental charges incurred in replacing defective parts under warranty shall be borne by the purchaser.
WARRANTY null & void if
(i) Lack of maintenance, (ii) Incorrect use of the machine or tampering, (iii) Use of non-genuine spare parts, (iv) Usage of acids, solvents, or any flammable materials, (v) Non-usage of filter water / clear water / soft water & using water above 40°C temperature, (vi) While using the pressure washers to draw water which is contaminated with dust & solvents (eg. paint thinners, gasoline, oil, etc.), (vii) Repair done by unauthorized service people, (viii) Those parts subject to wear & tear due to normal operations and plastic parts, rubber items etc, (ix) Loose connections, faulty electrical fixtures & fluctuations in power supply.
4. Should any failure occur during or after the warranty period, customer does not have the right to interrupt payment / price discount.
5. Incidental or consequential damages like inconvenience commercial loss, loss of tie, mental agony etc.
6. Loss of any nature due to operation or non-operation is not covered under warranty.
7. All free service are at Dealer's service point only.
8. Warranty ceases if service is not done periodically.
9. The attached card should be completed and returned to Ratnagiri Impex Pvt. Ltd. for registration immediately after sale / delivery.
10. The warranty is void unless you register the warranty card with Ratnagiri Impex Pvt. Ltd.
11. The decision of Ratnagiri Impex Pvt. Ltd., in settling the warranty is final in all respects.
12. All disputes are subject to Bangalore Courts Jurisdiction

FREE SERVICE COUPON (30DAYS/30HRS. WHICHEVER IS EARLIER)

MODEL			SERIAL NUMBER		
PDI DATE	SERVICE NO.		PURCHASE BILL NO.		DATE
DEALERS OFFICE SEAL	OPERATIONS				
	<ol style="list-style-type: none"> 1. Check and test the fuel mixture 2. check and clean the air filter 3. Check , clean and adjust the spark plug 4. Check and adjust the carburetor tuning 5. Check and sparken the cutting tools 6. Product familiarisation on usage 7. Start and check the noise, vibration, loosen etc.. 8. Routine maintenance and shortage. 				

FREE SERVICE COUPON (30DAYS/30HRS. WHICHEVER IS EARLIER)

MODEL			SERIAL NUMBER		
PDI DATE	SERVICE NO.		PURCHASE BILL NO.		DATE
DEALERS OFFICE SEAL	OPERATIONS				
	<ol style="list-style-type: none"> 1. Check and test the fuel mixture 2. check and clean the air filter 3. Check , clean and adjust the spark plug 4. Check and adjust the carburetor tuning 5. Check and sparken the cutting tools 6. Product familiarisation on usage 7. Start and check the noise, vibration, loosen etc.. 8. Routine maintenance and shortage. 				

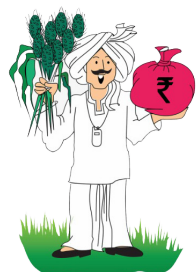
FREE SERVICE COUPON (30DAYS/30HRS. WHICHEVER IS EARLIER)

MODEL			SERIAL NUMBER		
PDI DATE	SERVICE NO.		PURCHASE BILL NO.		DATE
DEALERS OFFICE SEAL	OPERATIONS				
	<ol style="list-style-type: none"> 1. Check and test the fuel mixture 2. check and clean the air filter 3. Check , clean and adjust the spark plug 4. Check and adjust the carburetor tuning 5. Check and sparken the cutting tools 6. Product familiarisation on usage 7. Start and check the noise, vibration, loosen etc.. 8. Routine maintenance and shortage. 				

DOS & DONTs

1. Always read the instruction manual supplied along with the equipments and understand the correct installation and operating procedures before attempting to use the equipments.
2. It is important to use the personal protection equipments such as head helmet with visor, ear defenders, goggles, safety gloves, cut resistant shoes, trousers and jackets while operating potentially dangerous machines
3. Avoid untrained persons using the equipments. Children must not be allowed to handle these equipments
4. Always use genuine spares and accessories in repairs and usage to derive maximum life of the equipments.
5. Always keep the equipments in good working condition to minimize loss of output as well as to reduce the pollution and save the environment
6. Do not use the machine within range of persons unless they wear protective clothing
7. Do not operate the machine when fatigued or under the influence of alcohol or drugs
8. When the machine is running, please maintain a constant water supply. Without water circulation will damage the sealing rings of the machine.
9. For more query kindly contact for our Service Center/Dealer/ franchise

AGRIMATE MULTI PURPOSE EQUIPMENT ANYWHERE - ANYTIME - ANY CROP



**ratnagiri[®]
impex**

BRINGING YOU THE FUTURE... NOW

IMPORTED & MARKETING BY,

RATNAGIRI IMPEX PVT., LTD.,

Annapurna House, #1 / 1G, 7th Cross, New

Guddadahalli Mysore Road, Bangalore - 560 026

Missed Call : 7393 938 938 Email: ask@agrimart.in