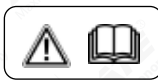


AM-K-26708

Motorised Sprayer

Operating Instructions



BEFORE OPERATING THIS APPLIANCE
PLEASE READ THESE INSTRUCTIONS CAREFULLY

INTRODUCTION

To correctly use the sprayer and prevent accidents, do not start work without having first carefully read this manual. You will find explanations concerning the operation of the various parts plus instructions for necessary checks and relative maintenance.

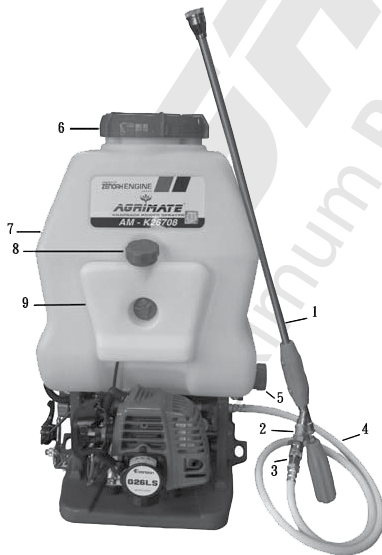
SAFETY PRECAUTIONS

WARNING: If correctly used, the sprayer is a quick, easy to handle and efficient tool: if used improperly, or without the due precautions it could become a dangerous tool. For pleasant and safe work, always strictly comply with the safety rules that follow and throughout this manual.

1. The sprayer must be used only by adults with knowledge of the operating instructions.
2. Do not use the sprayer when you are physically tired.
3. Wear gloves, protective glasses and ear protection. Wear long trousers; DO NOT WEAR short trousers. Wear non-slip footwear; DO NOT work with open sandals or barefooted.
4. Never allow bystanders to remain within your working area.
5. Always work from a firm-footed and safe position.
6. Transport the sprayer with the engine switched off and the liquid tank empty.
7. Do not attempt to service the sprayer while the engine is running.
8. Fill the tank away from sources of heat and with the engine stopped. Never smoke while filling. Never take the cap off the tank when the engine is running. If fuel spills over while filling, move the sprayer at least 3 meters (10 ft) away before starting.
9. Before starting, make sure that the liquid cock is closed.
10. Check the sprayer each day to ensure that each device, whether for safety or otherwise, is functional.
11. Always follow the manufacturer's instructions for the maintenance operations.
12. Never use a damaged, modified, or improperly repaired or assembled sprayer. Do not remove or damage any of the safety devices.
13. Never carry out operations or repairs on your own that are other than routine maintenance. Call specialized and authorized workshops only.
14. Never use fuel for cleaning operations.
15. Keep the sprayer in a dry place, off the ground with the tanks empty.
16. Wear an approved respirator and protective overalls for protection against toxic liquids.
17. Do not operate the sprayer in explosive atmospheres or near inflammable substances. When spraying in a greenhouse, ensure that the work area is well ventilated.
18. Do not use the sprayer until you have completely understood the specific operating method.

19. It is prohibited to attach a pump or any other implement not supplied by the manufacturer to the power take – off the pump.
20. If your sprayer is no longer usable, dispose of it carefully without damaging the environment by handing it into your local Dealer who will arrange for its correct disposal.
21. Only loan your sprayer to expert users who are completely familiar with sprayer operation and correct use. Give other users the manual with operating instructions, which they should read before using the sprayer.
22. Keep this manual on hand and consult it before each use of the tool.
23. Do not direct the lance and nozzles towards persons or animals.
24. Never start the machine without pump. It will cause serious damages to the engine parts as well as the withdrawal of the warranty.
25. Do not use the sprayer set close to electrical equipment.
26. Take the cap off the spark plug each maintenance time, during cleaning or repair work.
27. The sprayer must always be kept upright to prevent liquid escaping from the tank.
28. Do not use the sprayer with inflammable and / or corrosive substances.
29. Do not assemble the pump on other motors or power transmissions.
30. The engine is 2-stroke. Always use mixture for the fuel. Gasoline without oil damages engine in a short time.

SPRAYER COMPONENTS



- 1 - Spray gun
- 2 - Cock switch
- 3 - Roller
- 4 - High pressure PVC hose
- 5 - Drain cup
- 6 - Tank cover
- 7 - Liquid tank
- 8 - Fuel cap
- 9 - Fuel tank

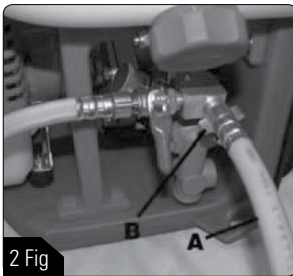
ASSEMBLY



1 Fig

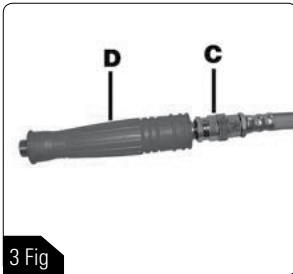
Assembling the lance:

The sprayer is supplied packaged as shown in Fig. 1. To prepare the sprayer for use a few simple operations are required:



2 Fig

- Connect the high pressure hose (Fig 2-A) to the pump and secure with wing nut (Fig 2-B).
- Screw the jet regulator (Fig 3-C) onto the tip of the handle (Fig 3-D) and high pressure hose (Fig 2-A).
- Screw the lance (Fig 4-E) onto the control valve (Fig 4-F)

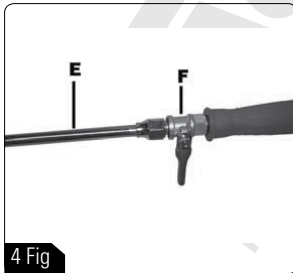


3 Fig

Optional

A range of lances for all operator requirements can be purchased separately (Fig 5)

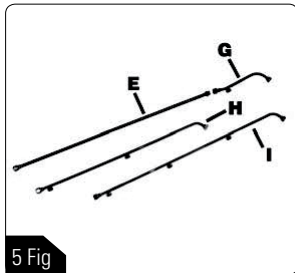
- Lance with 2 nozzle (Fig 5-G)
- Lance with 3 nozzle (Fig 5-H)
- Lance with 4 nozzle (Fig 5-I)



4 Fig

Lance performance:

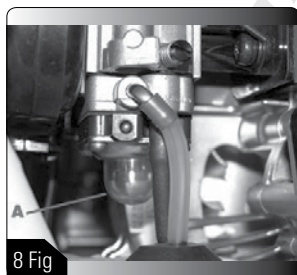
The standard lance with single nozzle with the regulator fully open (turned counter-clockwise) has a vertical throw of 220cm from the lance tip (Fig 6).



STARTING

Fuel Mixture:

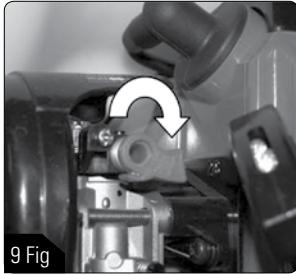
Use a 4% (25:1) oil-gasoline mixture. (oil : two stroke oil or 20/50 engine oil) Warning: two stroke engines have hing specific horsepower and we therefore recommend the use of well known, super gasoline, with or without lead and an octane rating of no less than 90. When preparing the mixture, only use oil for two stroke engines. Shake the fuel canister before filling. Refill (Fig 7) when the engine is switched off and far away from naked flames. Before unscrewing the fuel tank cap position the sprayer on a flat, solid surface to prevent fuel spills. Only prepare the quantity of mixture for each job, do not leave the mixture in the fuel tank or in a fuel canister for prolonged periods.



Starting the engine:

Make sure that the throttle lever is in the idle position. Fill the carburetor by pushing the primer bulb (Fig 8-A). Put the choke lever (Fig 9-B) in the "CLOSE" position. Place the sprayer on the ground in a stable position. Holding the sprayer firmly (Fig 10), pull sharply on the starter cord to start the engine. Wait a few seconds then operate the throttle lever to release the automatic semi-acceleration device. The starter lever should return to its original "OPEN" position.

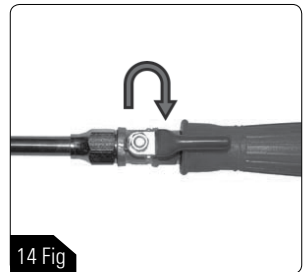
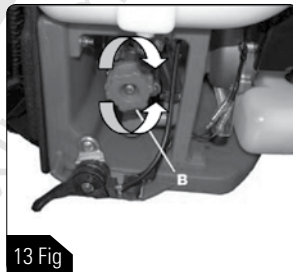
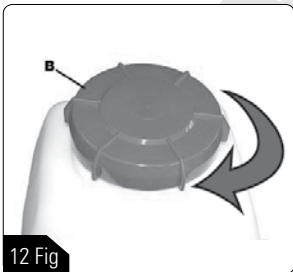
Warning: once the engine is warmed up, do not use choke to start up again.



USE-STOPPING THE ENGINE

USE:

- Fill the liquid tank through the filter provided to prevent the introduction of foreign bodies (Fig 11-A)
- Replace the filler cap (Fig 12-B) making sure it is tightly sealed.
- After starting the engine, adjust the liquid flow by way of the pressure regulator (Fig 13-C). The regulator can be easily operated when the sprayer is on the back of the operator.
- Operate the control valve to control the Spray (Fig 14-D).



Warning:

After starting the sprayer, operate the control valve immediately to allow any residual air trapped inside the pump to escape and to check that the liquid is flowing normally. If the liquid does not flow normally, operate the pressure regulator to eliminate air from the pump. **Never ever operate the pump when the liquid tank is empty.**

Warning:

On completion of work, close the liquid valve before stopping the engine.

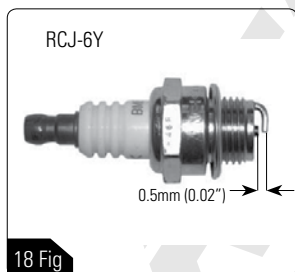
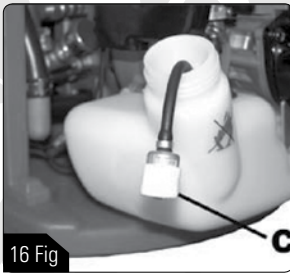
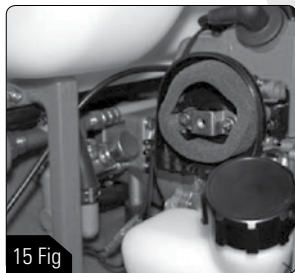
Stopping the engine:

Set the throttle lever to minimum. Switch off the engine by turning the stop switch to STOP.

Warning:

After use of liquid chemicals, flush out the pump immediately by filling the tank with clean water and re-starting the sprayer.

ENGINE MAINTENANCE-STORAGE



Engine maintenance:

Warning: maintenance operations. Do not carry out maintenance when the engine is hot.

Air filter: Every 8-10 working hours, take off the Cover. The filter should be cleaned by shaking it Well and with a soft brush (Fig 15).

Fuel filter: Check the fuel filter periodically. Replace it if too dirty (Fig 16).

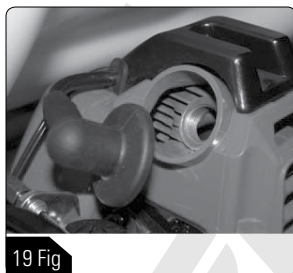
Engine: Clean the cylinder fans (Fig 17) with compressed air or a brush periodically. Dangerous overheating of engine may occur due to impurities on the cylinder.

Spark plug: Clean the spark pug and check the Electrode gap periodically (Fig 18).

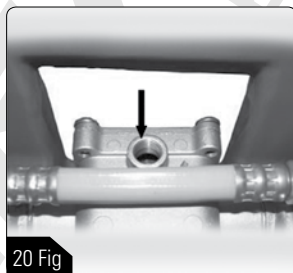
Storage:

- When the mist blower is stored for long intervals, use clean water and run sprayer for few minutes. Dry the sprayer thoroughly, empty the fuel tank and clean the engine.
- Empty the fuel cap and put the cap back on.
- Remove the spark plug; pour a small amount of oil into the cylinder(Fig 19).
- Rotate the crankshaft several times using the starting rope in order to distribute the oil. Put the spark plug back in.
- Store the pump in a dry place, preferably not in direct contact with the floor and away from the heat sources.
- Do not lie the sprayer on its side, oil may leak.

Warning: All maintenance operations not reported in this manual must be carried out by an authorized Service Center. To ensure steady and regular sprayer operation, remember that parts must only be replaced with original spares.



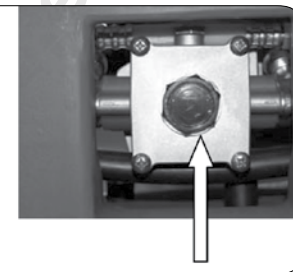
19 Fig



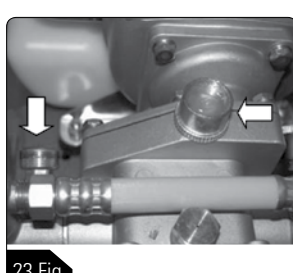
20 Fig



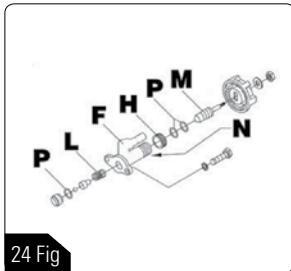
21 Fig



22 Fig



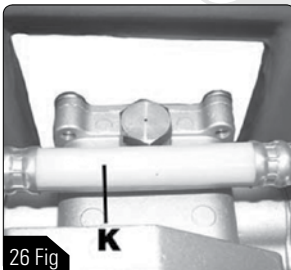
23 Fig



24 Fig



25 Fig



26 Fig

PUMP MAINTENANCE

Oil- To check the oil level, remove the protective rubber cushion (Fig 21) by removing the screws. Change oil firstly after 30 operating hours, then every 100 operating.

1. Unscrew plug (Fig 22-C) and drain oil. Replace and tighten drain plug.
2. Unscrew breather cap (Fig 20) of the oil tank and fill with 120cc of SAE 40 or 20/50 engine oil.

Grease nipples - Apply with grease at each grease nipple (Fig 23-E)

Warning: Screw in the grease nipple two turns every 2 operating hours.

Valve- To remove the valve (Fig 24-F), for cleaning, remove the screws (Fig24-G) and valve cap. Remove any residue from the valve cap. Change the valve spring (fig 24- L) if broken or worn.

If the valve loses pressure:

1. Fit a new valve if the pressure regulator (Fig 24-M) or the valveseat (Fig 24-N) is worn.
2. Remove any residue from the valve seat.
3. Renew the oil seals if worn.

Nozzles - Replace the nozzles if broken or if the y loose pressure (Fig 25).

High pressure hose - Replace the high pressure hose (Fig 26-K) if broken or worn.

TECHNICAL DATA

Engine		Zenoah G26LS	KM26 engine
Displacement	cc	25.4	25.6
Power	kW	0.81	0.80
Max. rpm	min ⁻¹		9000
Min. rpm	min ⁻¹		3000
Fuel tank capacity	cm ³		1000
Electronic ignition			Yes
Anti-vibration system			Yes
Diaphragm carburetor			Yes
Primer carburetor			Yes
Centrifugal clutch			Yes
Max. vertical liquid range	m		2.2
Pump reduction ratio			1 ÷ 4
Agricultural chemical solutions containing acids	pH		4 - 9
Prohibited chemical solutions		Sulfuric acid, nitric acid, hydrochloric acid, alkalis, powdered & insoluble chemicals	
Liquid discharge	l/min		7.2
Weight	Kg		11.2
Dimensions	mm	390x330x630	
Main tank capacity	L		23
pressure	Kg/cm ²		35

WARRANTY CERTIFICATE

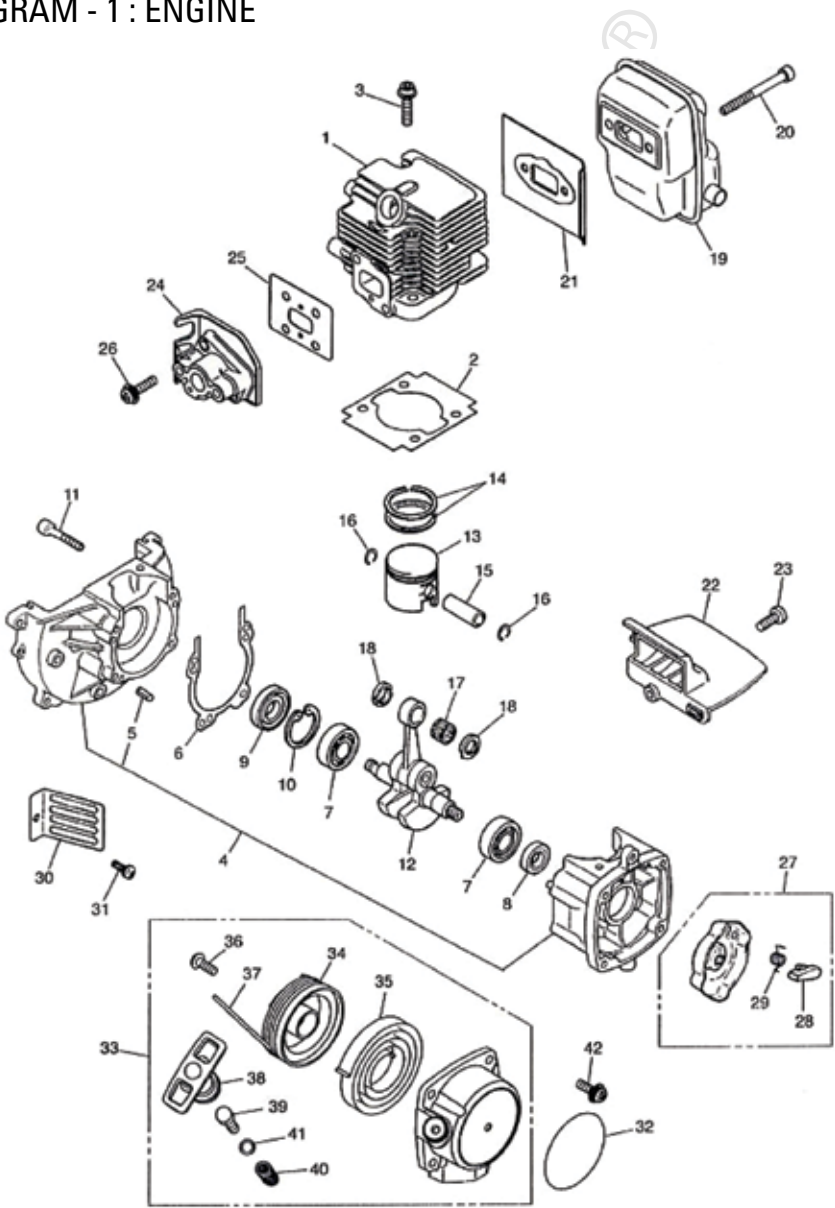
This machine has been designed and manufactured using the most modern techniques. The manufacturer guarantees the machine to be free from defects for a period of twelve months from the date of purchase provided it is used exclusively for private/hobby purposes. If the machine is used for professional purposes, the warranty period shall be for a period of six months. If the machine is used for hire no warranty. This warranty is only for first owner.

Limited Warranty

- 1) The warranty period starts on the date of sale. The manufacturer, acting through the sales and technical assistance network, shall replace free of charge any parts proven defective in material, machining and manufacturing. The warranty does not affect the purchaser's rights as established under legislation governing the consequences of defects in the machine.
- 2) Technical personnel will undertake the necessary repairs in the minimum time possible compatible with organizational needs.
- 3) To make any claim under the warranty, this certificate of warranty, fully complied, bearing the dealer's stamp, and accompanied by the invoice or receipt showing the date of purchase, must be displayed to the personnel authorized to approve work.
- 4) The warranty shall be null and void if:
 - The machine has evidently not been serviced correctly.
 - The machine has been used for improper purposes or has been modified in any way.
 - Unsuitable lubricants and fuels have been used.
 - Non-original spare parts and accessories have been fitted.
 - Work has been done on the machine by unauthorized personnel.
- 5) The warranty does not cover consumables or parts subject to normal wear.
- 6) The warranty does not cover work to update or improve the machine.
- 7) The warranty does not cover any preparation or servicing work required during the warranty period.
- 8) Damaged incurred during transport must be immediately brought to the attention of the carrier: failure to do so shall render null and void the warranty.
- 9) The warranty does not cover injury or damage caused directly or indirectly to persons or things by defects in the machine or by periods of extended disuse of the machine resulting from the said defects.

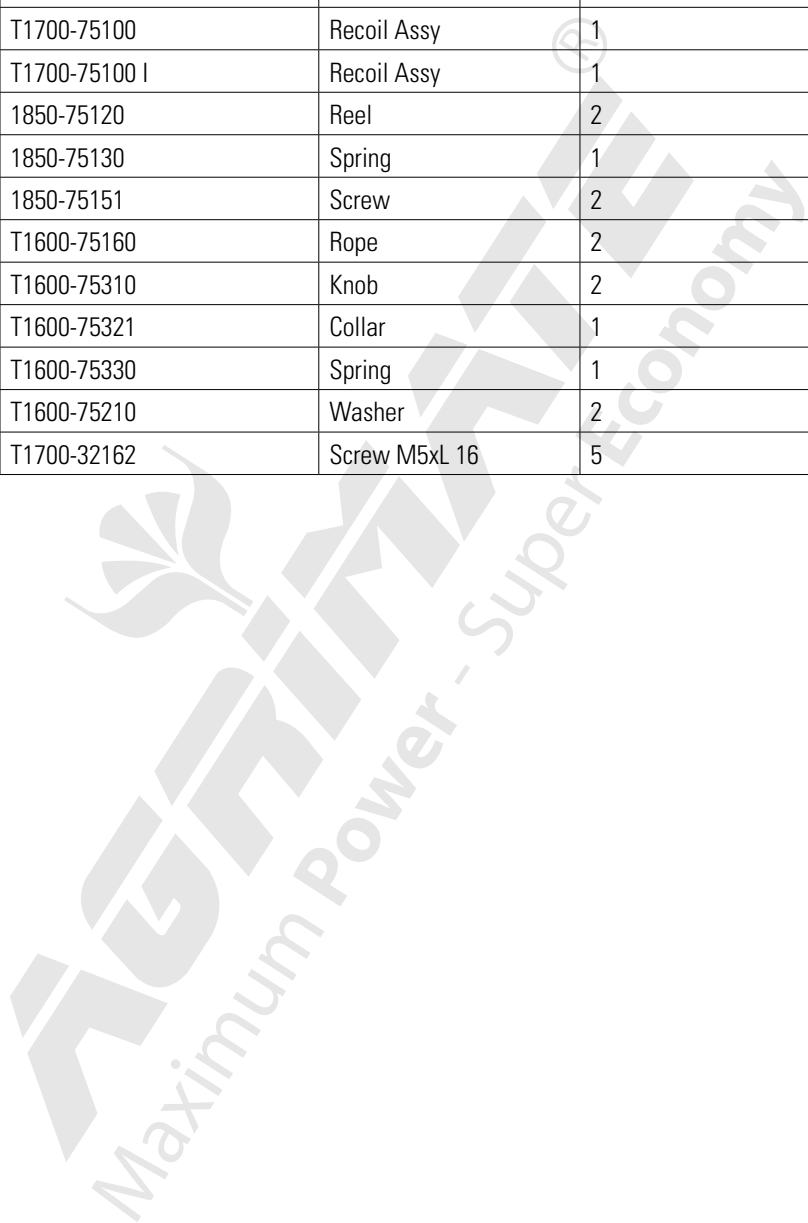
AGRIMATE MOTORISED BACKPACK SPRAYER K26708 - ENGINE

DIAGRAM - 1 : ENGINE



Ref No	Part No	Part Name	MOQ
1	T1800-12110	Cylinder	***
2	5500-12213	Gasket	5
3	1850-12130	Bolt M5xL22	5
4	5500-21100	Crankcase-C	***
5	2629-21130	Pin	5
6	5500-21141	Gasket	5
7	06030-06001	Bearing	1
8	2169-21210	Seal	2
9	1850-21220	Seal	2
10	04065-02812	Ring	2
11	01252-30530	Bolt M5xL30	2
12	5500-42001	Crankshaft-C	***
13	5700-41110	Piston	1
13	5700-41110 I	Piston Ind	1
14	5910-41210	Ring	2
14	5910-41210 I	Ring Ind	
15	1600-41310	Pin	2
16	1260-41320	Ring	5
17	5500-41410	Bearing	2
18	1101-41340	Washer	2
19	T1700-15110	Muffler	1
20	01252-30550	Bolt M5xL50	2
21	T1600-15210	Gasket	1
22	5500-15221	Plate(T)	1
23	0263-90416	Screw M4xL 16	5
24	T1700-13160	Insulator	1
25	5500-13121	Gasket, Insulator	2
26	0263-90520	Screw M5xL20	2
27	1850-75201	Pulley Assy	1
28	1850-75221	Ratchet	2
29	1820-75230	Spring	5
30	5500-22110	Guard	2

31	0263-90514	Screw M5xL 14	5
32	T1821-75410	Label, Recoil	NA
33	T1700-75100	Recoil Assy	1
33	T1700-75100 I	Recoil Assy	1
34	1850-75120	Reel	2
35	1850-75130	Spring	1
36	1850-75151	Screw	2
37	T1600-75160	Rope	2
38	T1600-75310	Knob	2
39	T1600-75321	Collar	1
40	T1600-75330	Spring	1
41	T1600-75210	Washer	2
42	T1700-32162	Screw M5xL 16	5



AGRIMATE MOTORISED BACKPACK SPRAYER K26708 - ENGINE

DIAGRAM - 2 : ENGINE

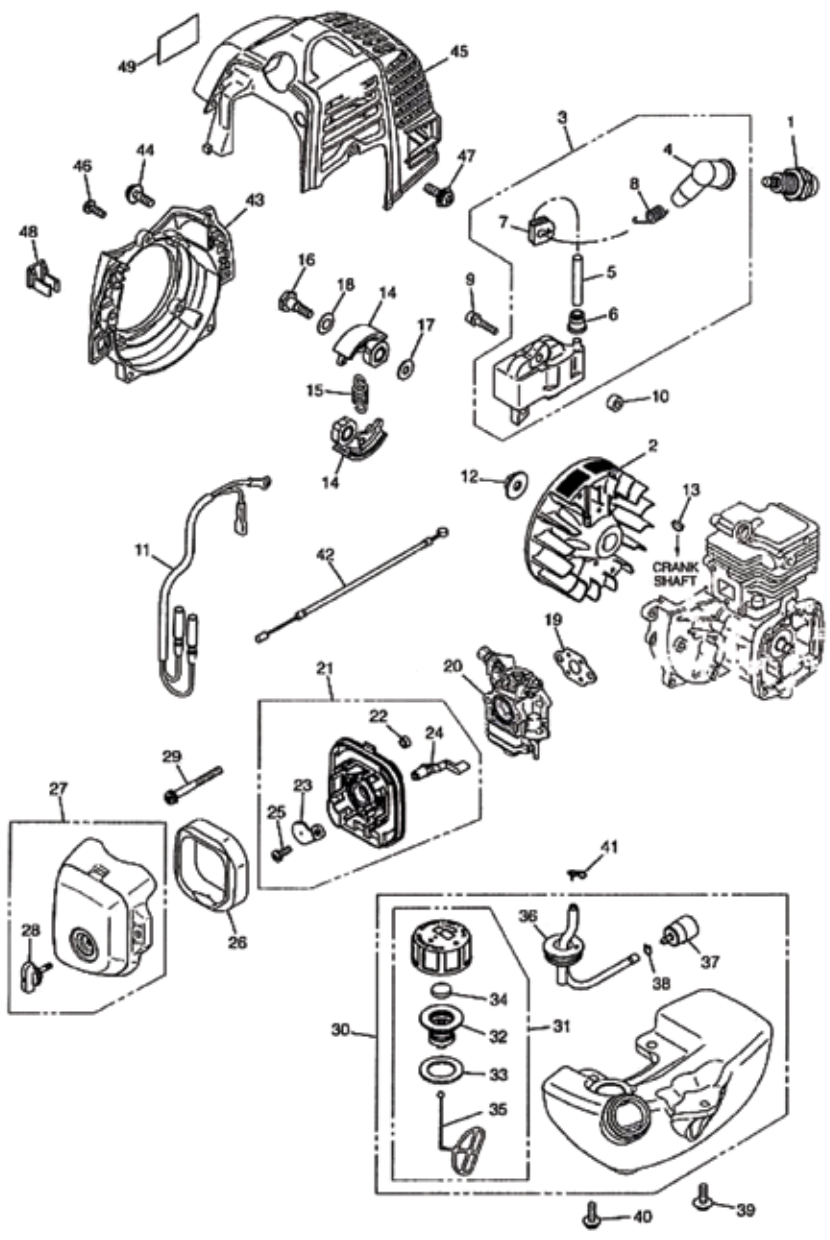


DIAGRAM - 2 : ENGINE

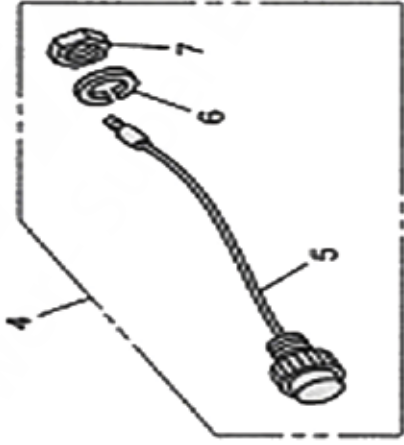
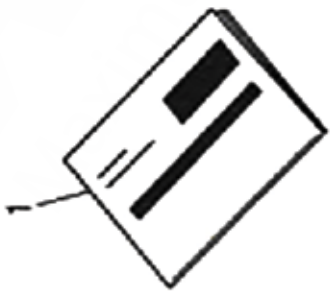
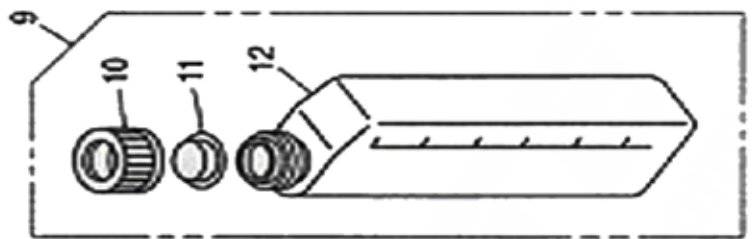
Ref No	Part No	Part Name	MOQ
1	1881-73110	Spark Plug	1
1	1881-73110E	Spark Plug - Eco	1
2	T1700-71110	Rotor	***
3	T1700-71201	Coil-A	***
4	5500-72110	Cap	5
5	T1700-71220	Cord	1
6	2616-71320	Cap	1
7	5500-72130	Grommet	2
8	5500-72120	Spring	2
9	3310-72150	Bolt	5
10	T1700-71260	Spacer	2
11	T1700-73200	Cord-Comp	1
12	1650-43230	Nut	5
13	1000-43240	Key	2
14	1140-51111	Shoe	1
14	1140-51111 I	Clutch Assy	1
15	T1700-51220	Spring	2
16	1140-51250	Screw	2
17	1140-51230	Washer	5
18	1970-51241	Washer	5
19	5500-13131	Gasket	5
20	T1701-81000	Carburetor-A	1
20	T1701-81000E	Carburetor-A Eco	1
21	T1700-82100	Body-A	1
22	1970-82190	Sleeve	2
23	T1700-82130	Plate, Choke	1
24	T1700-82140	Lever	1
25	2630-33610	Screw	2
26	5500-82171	Element	2
27	T1600-82200	Cover-A	1

28	5500-82221	Knob	1
29	0263-90560	Screw	2
30	T1700-85001	Tank-A	1
31	5607-85201	Cap-A	2
32	5601-85300	Holder-A	NA
33	5500-85220	Packing	NA
34	5601-85260	Filter	NA
35	4820-85260	Stopper	NA
36	5500-85300	Pipe-C	1
37	5500-85400	Filte-A	1
38	1260-85460	Clip	NA
39	5910-85510	Screw	NA
40	5500-85510	Screw	NA
41	1950-86120	Clip	NA
42	T1606-83100	Cable-C	2
43	T1815-31110	Cover-Fan	1
44	0263-90520	Screw M5 x L20	2
45	T1815-32110	Cover ,Engine	1
46	0263-90510	ScrewM5x L10	2
47	T1700-32162	ScrewM4x L16	2
48	T1600-72210	Clamp	1
49	T1606-31130	Label, Cover	NA

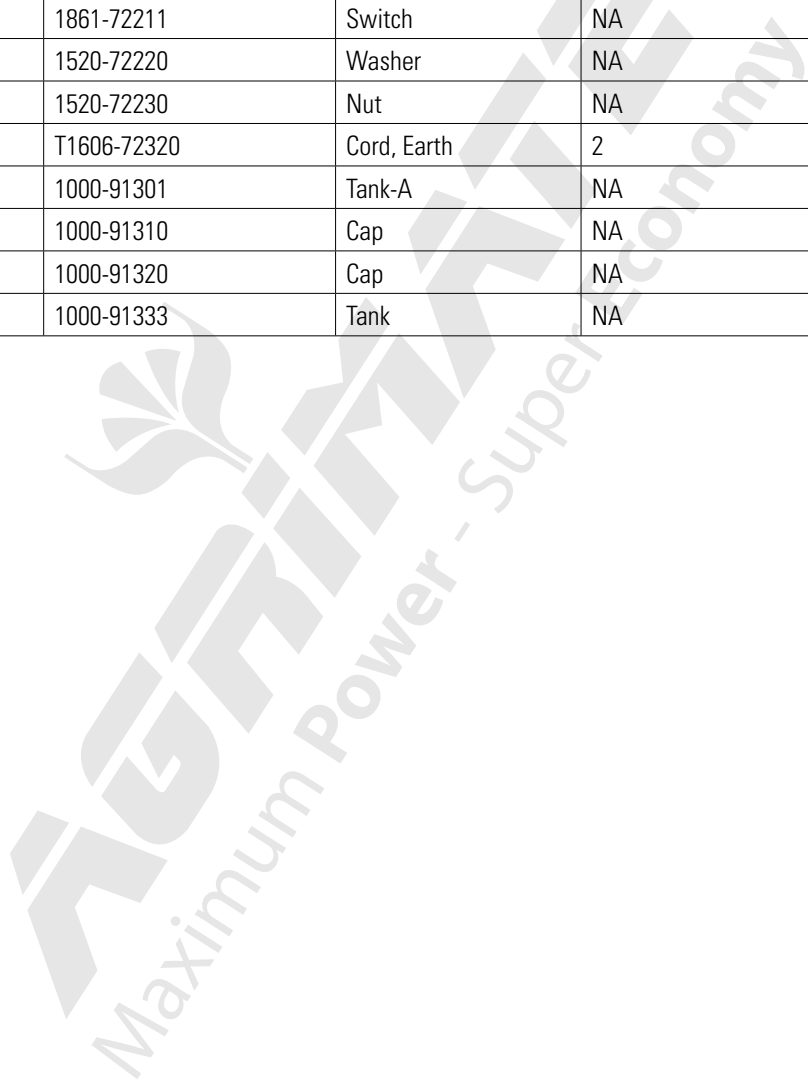
Ref No	Part No	Part Name	MOQ
1	T1701-81000	Carburetor	1
1	T1701-81000	Carburetor - Eco	1
2	1794-81450	Body-A	NA
3	3306-81380	Screen	NA
4	3356-81310	Vlave, Inlet	NA
5	1794-81270	Spring	NA
6	1850-81220	Screw	NA
7	3310-81250	Pin	NA
8	3310-81230	Lever	NA
9	1850-81490	Body	NA
10	1850-81520	Cover, Pump	1
11	1751-81510	Pump, Primer	2
12	3310-81260	Diaphram, Metaling	1
13	1850-81470	Gasket	1
14	1065-81420	Diaphram, Pump	1
15	1065-81410	Gasket	1
18	1751-81130	Ring	NA
19	5500-81160	Washer	NA
20	1881-81140	Swivel	1
21	T1700-81150	Valve Assy	NA
22	1752-81110	Screw	2
23	5500-81120	Bracket	1
24	1751-81180	Nut	1
25	1918-81170	Screw, Adjust	1
26	1881-81130	Ring	1
27	1850-81530	Screw	1
28	T1802-81610	Needle	NA
29	1491-81160	Spring	1
30	1881-81190	Washer	1
31	1881-81240	O -Ring	1

AGRIMATE MOTORISED BACKPACK SPRAYER K26708 - ENGINE

DIAGRAM - 4 : ACCESSORIES

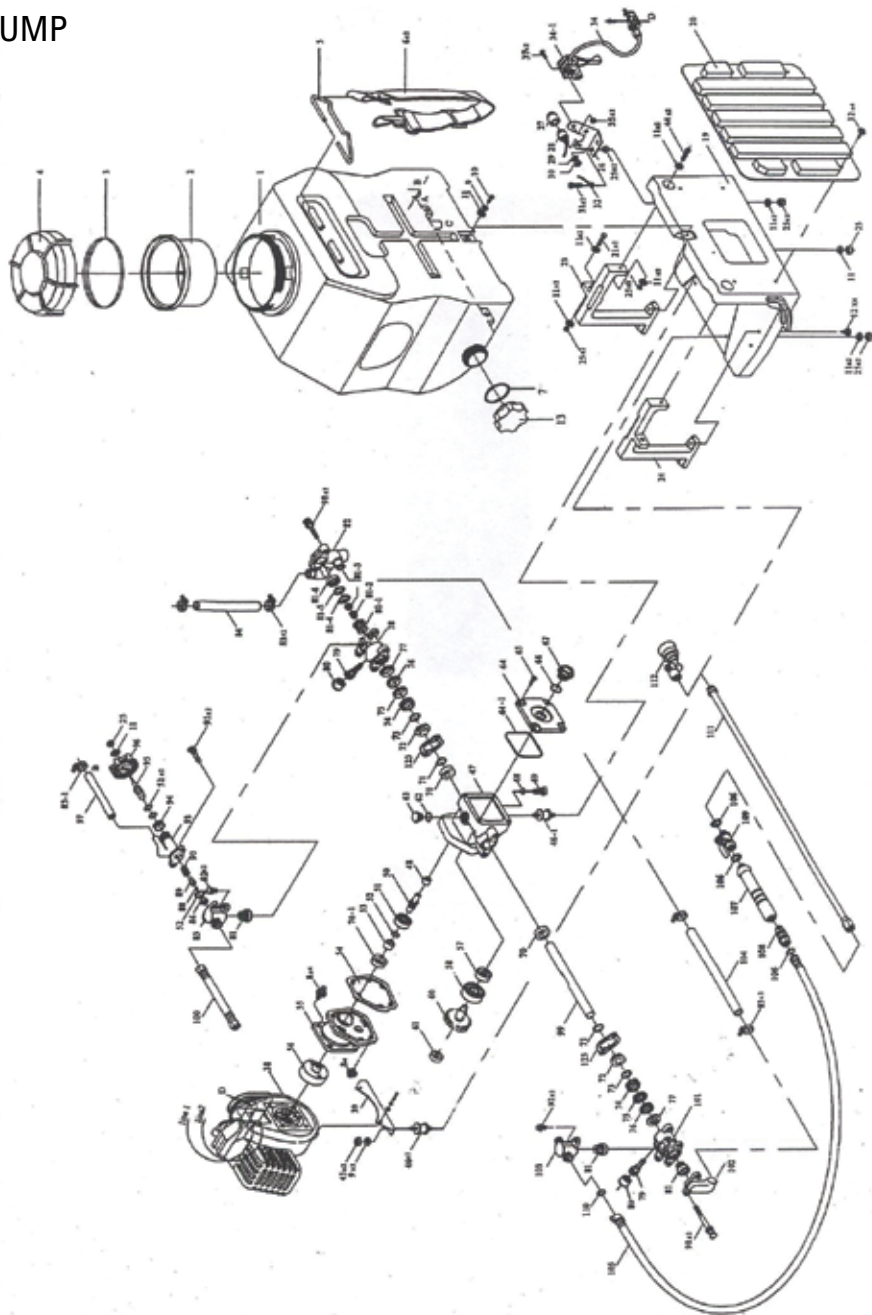


Ref No	Part No	Part Name	MOQ
1	T1709-93110	Manual	NA
2	3294-18150	Manual	NA
3	1968-82200	Lever-Assy	1
4	1861-72201	Switch-A	1
5	1861-72211	Switch	NA
6	1520-72220	Washer	NA
7	1520-72230	Nut	NA
8	T1606-72320	Cord, Earth	2
9	1000-91301	Tank-A	NA
10	1000-91310	Cap	NA
11	1000-91320	Cap	NA
12	1000-91333	Tank	NA



AGRIMATE MOTORISED BACKPACK SPRAYER K26708 PUMP

PUMP



Part No	Part Name	MOQ
K26708P-01	Chemical Container	1
K26708P-02	Filter	1
K26708P-03	Gasket	2
K26708P-04	Container Cover	1
K26708P-06	Strap	1
K26708P-07	Gasket	5
K26708P-08	Screw	5
K26708P-09	Spring Washer	5
K26708P-10	Screw	5
K26708P-11	Washer	5
K26708P-12	Screw	5
K26708P-13	Drain Cup	2
K26708P-14	Fuel Tank	1
K26708P-15	Cap Of Fuel Tank	1
K26708P-19	Frame	1
K26708P-20	Pad	1
K26708P-21	Screw	2
K26708P-23	Right Stand	1
K26708P-24	Left Stand	1
K26708P-25	Nylon Nut	5
K26708P-26	Fixed Plate	2
K26708P-28	Stop Switch	1
K26708P-31	Screw	5
K26708P-32	Cord Comp	2
K26708P-33	Washer	5
K26708P-34	Cable Comp	2
K26708P-34-1	Flex Accelerator	1
K26708P-35	Nylon Nut	5
K26708P-37	Screw	2
K26708P-39	Engine Stand	1

K26708P-40	Washer	5
K26708P-41	Spring Washer	5
K26708P-42	Screw	2
K26708P-43	Nut	2
K26708P-46	Joint-S	1
K26708P-46-1	Joint-L	1
K26708P-47	Crankcase	1
K26708P-48	Bearing	1
K26708P-50	Shaft	1
K26708P-51	Bearing	1
K26708P-52	O-Ring	5
K26708P-53	Steel Pipe	1
K26708P-54	Gasket	2
K26708P-55	Drum Case	1
K26708P-56	Drum Clutch	1
K26708P-57	Bearing	1
K26708P-58	Bearing	1
K26708P-59-60	Gear Shaft and Gear	1
K26708P-61	Bearing	1
K26708P-62	O-Ring	5
K26708P-63	Oil Inlet Cup	2
K26708P-64	Crankcase Cover	1
K26708P-64-1	O-Ring	5
K26708P-65	Screw	5
K26708P-66	O-Ring	5
K26708P-67	Oil Glass	1
K26708P-68	O-Ring	5
K26708P-69	Drain Plug	2
K26708P-70	Oil Seal	2
K26708P-70-1	Oil Seal	2
K26708P-71	O-Ring	5

K26708P-72	Adjusting Ring	2
K26708P-73	Grease Ring	2
K26708P-74	V-Packing Upper Seal	2
K26708P-75	V-Packing	2
K26708P-76	V-Packing	2
K26708P-77	Packing Seat	2
K26708P-78	Cylinder	1
K26708P-79-80	Grease Cup	1
K26708P-81	Valve Ass'y	1
K26708P-82	Suction Chamber	1
K26708P-83	Clip-L	2
K26708P-83-1	Clip-S	2
K26708P-84	Suction Hose	1
K26708P-85	Outlet Chamber	1
K26708P-86	Valve Seat	2
K26708P-88	Pressure Valve	2
K26708P-89	Pressure Valve Rod	1
K26708P-90	Spring	2
K26708P-91	Screw	5
K26708P-93	Relief Valve Ass'y	1
K26708P-94	Nut	2
K26708P-95	Pressure Valve Screw	1
K26708P-96	Pressure Adjusting	2
K26708P-97	Overflow Hose	1
K26708P-98	Screw	2
K26708P-99	Plunger	1
K26708P-99 I	Plunger Ind	1
K26708P-100	High Pressure Hose	1
K26708P-101	Cylinder	1
K26708P-102	Suction Chamber	1
K26708P-103	Outlet Chamber	1

K26708P-104	Suction Hose	1
K26708P-105	High Pressure Hose	1
K26708P-106	Packing	5
K26708P-107	Hose Pipe Handle	1
K26708P-108	Roller	1
K26708P-109	Ball Cock	1
K26708P-110	Packing	5
K26708P-111	Spray Rod (SG101-C)	1
K26708P-123	Fixed Plate	2

INSPECTION & MAINTENANCE

For safety use, make sure a three-month clean the machine. Before working, make sure inspect the filter and the nozzle, make sure there is no impurity. After working, make sure there is no water in the pump and the hose.

If the machine need to be repaired in the guarantee period, please return the machine to the shop. You need to provide the certificate of purchase in order to repair or get the substitute.

Before Packaging, The machine should be cleaned, then use closed packaging, packaging should be firm. Storage the machine in dry.

For transportation safety. The machine should comply with ISTA.



Meaning of crossed –out wheeled dustbin:

Do not dispose of electrical machines as unsorted municipal waste, use separate collection facilities.

Contact you local government for information regarding the collection systems available.

If electrical machines are disposed of in landfills or dumps, hazardous substances can leak into the groundwater and get into the food chain, damaging your health and well-being.

When replacing old machines with new ones, the retailer is legally obligated to take back your old machine for disposals at least free of charge.

Warranty Card

CUSTOMER COPY

ISO 9001:2008

Date _____

Purchaser's Name & Address

Product Name

Product Serial No.

Invoice / DN No.

Date of Delivery

Dealer's Office Seal

Dealer Sign _____

Customer Sign. _____

I/We accept the terms and conditions of Warranty as in the Warranty Card.

Warranty Card

DEALER'S COPY

ISO 9001:2008

Date _____

Purchaser's Name & Address

Product Name

Product Serial No.

Invoice / DN No.

Date of Delivery

Dealer's Office Seal

Dealer Sign _____

Customer Sign. _____

I/We accept the terms and conditions of Warranty as in the Warranty Card.

Warranty Card

COMPANY COPY

ISO 9001:2008

Date _____

Purchaser's Name & Address

Product Name

Product Serial No.

Invoice / DN No.

Date of Delivery

Dealer's Office Seal

Dealer Sign _____

Customer Sign. _____

I/We accept the terms and conditions of Warranty as in the Warranty Card.

1. **LIMITED WARRANTY PERIOD** : For a period of six months from the date of Sale / delivery of the product which ever is earlier. 2. **LIMITED WARRANTY OBLIGATION** : Replacement of defective part(s) by authorized dealer are free of charges. If found defective by reasons of defective material / poor workmanship, parts will be replaced and there will be no value re-imbursalment. 3. **TERMS & CONDITIONS** : a. Claims under warranty will be accepted on submission of Warranty Card duly filled and stamped by authorized dealer together with the original purchase document. : b. Shipping / transportation / Incidental charges incurred in replacing defective parts under warranty shall be borne by the purchaser.

WARRANTY null & void if

- (i) Lack of maintenance, (ii) Incorrect use of the machine or tampering, (iii) Use of non-genuine spare parts, (iv) Usage of acids, solvents, or any flammable materials, (v) Non-usage of filter water / clear water / soft water & using water above 40°C temperature, (vi) While using the pressure washers to draw water which is contaminated with dust & solvents (eg. paint thinners, gasoline, oil, etc.), (vii) Repair done by unauthorized service people, (viii) Those parts subject to wear & tear due to normal operations and plastic parts, rubber items etc, (ix) Loose connections, faulty electrical fixtures & fluctuations in power supply.
4. Should any failure occur during or after the warranty period, customer does not have the right to interrupt payment / price discount.
5. Incidental or consequential damages like inconvenience commercial loss, loss of tie, mental agony etc.
6. Loss of any nature due to operation or non-operation is not covered under warranty.
7. All free service are at Dealer's service point only.
8. Warranty ceases if service is not done periodically.
9. The attached card should be completed and returned to Ratnagiri Impex Pvt. Ltd. for registration immediately after sale / delivery.
10. The warranty is void unless you register the warranty card with Ratnagiri Impex Pvt. Ltd.
11. The decision of Ratnagiri Impex Pvt. Ltd., in settling the warranty is final in all respects.
12. All disputes are subject to Bangalore Courts Jurisdiction

1. **LIMITED WARRANTY PERIOD** : For a period of six months from the date of Sale / delivery of the product which ever is earlier. 2. **LIMITED WARRANTY OBLIGATION** : Replacement of defective part(s) by authorized dealer are free of charges. If found defective by reasons of defective material / poor workmanship, parts will be replaced and there will be no value re-imbursalment. 3. **TERMS & CONDITIONS** : a. Claims under warranty will be accepted on submission of Warranty Card duly filled and stamped by authorized dealer together with the original purchase document. : b. Shipping / transportation / Incidental charges incurred in replacing defective parts under warranty shall be borne by the purchaser.

WARRANTY null & void if

- (i) Lack of maintenance, (ii) Incorrect use of the machine or tampering, (iii) Use of non-genuine spare parts, (iv) Usage of acids, solvents, or any flammable materials, (v) Non-usage of filter water / clear water / soft water & using water above 40°C temperature, (vi) While using the pressure washers to draw water which is contaminated with dust & solvents (eg. paint thinners, gasoline, oil, etc.), (vii) Repair done by unauthorized service people, (viii) Those parts subject to wear & tear due to normal operations and plastic parts, rubber items etc, (ix) Loose connections, faulty electrical fixtures & fluctuations in power supply.
4. Should any failure occur during or after the warranty period, customer does not have the right to interrupt payment / price discount.
5. Incidental or consequential damages like inconvenience commercial loss, loss of tie, mental agony etc.
6. Loss of any nature due to operation or non-operation is not covered under warranty.
7. All free service are at Dealer's service point only.
8. Warranty ceases if service is not done periodically.
9. The attached card should be completed and returned to Ratnagiri Impex Pvt. Ltd. for registration immediately after sale / delivery.
10. The warranty is void unless you register the warranty card with Ratnagiri Impex Pvt. Ltd.
11. The decision of Ratnagiri Impex Pvt. Ltd., in settling the warranty is final in all respects.
12. All disputes are subject to Bangalore Courts Jurisdiction

1. **LIMITED WARRANTY PERIOD** : For a period of six months from the date of Sale / delivery of the product which ever is earlier. 2. **LIMITED WARRANTY OBLIGATION** : Replacement of defective part(s) by authorized dealer are free of charges. If found defective by reasons of defective material / poor workmanship, parts will be replaced and there will be no value re-imbursalment. 3. **TERMS & CONDITIONS** : a. Claims under warranty will be accepted on submission of Warranty Card duly filled and stamped by authorized dealer together with the original purchase document. : b. Shipping / transportation / Incidental charges incurred in replacing defective parts under warranty shall be borne by the purchaser.

WARRANTY null & void if

- (i) Lack of maintenance, (ii) Incorrect use of the machine or tampering, (iii) Use of non-genuine spare parts, (iv) Usage of acids, solvents, or any flammable materials, (v) Non-usage of filter water / clear water / soft water & using water above 40°C temperature, (vi) While using the pressure washers to draw water which is contaminated with dust & solvents (eg. paint thinners, gasoline, oil, etc.), (vii) Repair done by unauthorized service people, (viii) Those parts subject to wear & tear due to normal operations and plastic parts, rubber items etc, (ix) Loose connections, faulty electrical fixtures & fluctuations in power supply.
4. Should any failure occur during or after the warranty period, customer does not have the right to interrupt payment / price discount.
5. Incidental or consequential damages like inconvenience commercial loss, loss of tie, mental agony etc.
6. Loss of any nature due to operation or non-operation is not covered under warranty.
7. All free service are at Dealer's service point only.
8. Warranty ceases if service is not done periodically.
9. The attached card should be completed and returned to Ratnagiri Impex Pvt. Ltd. for registration immediately after sale / delivery.
10. The warranty is void unless you register the warranty card with Ratnagiri Impex Pvt. Ltd.
11. The decision of Ratnagiri Impex Pvt. Ltd., in settling the warranty is final in all respects.
12. All disputes are subject to Bangalore Courts Jurisdiction



FATMAGIRI
impex
BRINGING YOU THE FUTURE TODAY

1st Free Service Coupon

ISO 9001-2008
CERTIFIED COMPANY

FREE SERVICE COUPON (30 Days / 20 hrs (Which ever is earlier))

Model Serial Number

PDI Date Service No. Purchase bill no. Date

Dealer's Office Seal

- Operations:
- Check and Test the Fuel Mixture.
 - Check and Clean the Air Filter
 - Check, Clean and Adjust the Spark plug
 - Check and Adjust the Carburetor Tuning
 - Check and Sharpen the cutting Tools
 - Start and Check the Noise, Vibration, Loosen / Fasteners etc.
 - Product familiarization on Usage
 - Routine maintenance and Storage

Dealer Signature.....

Customer Signature.....

Conditions: Operations listed have been performed to my entire satisfaction without any labour charges. Only consumables were charged.



agriculture | horticulture | sericulture | plantations | forestry | garden | health care

WARRANTY AND FREE SERVICE COUPON



FATMAGIRI
impex
BRINGING YOU THE FUTURE TODAY

2nd Free Service Coupon

ISO 9001-2008
CERTIFIED COMPANY

FREE SERVICE COUPON 60 Days/100 hrs (Which ever is earlier)

Model Serial Number

PDI Date Service No. Purchase bill no. Date

Dealer's Office Seal

- Operations:
- Check and Test the Fuel Mixture.
 - Check and Clean the Air Filter
 - Check, Clean and Adjust the Spark plug
 - Check and Adjust the Carburetor Tuning
 - Check and Sharpen the cutting Tools
 - Start and Check the Noise, Vibration, Loosen / Fasteners etc.
 - Product familiarization on Usage
 - Routine maintenance and Storage

Dealer Signature.....

Customer Signature.....

Conditions: Operations listed have been performed to my entire satisfaction without any labour charges. Only consumables were charged.



agriculture | horticulture | sericulture | plantations | forestry | garden | health care

WARRANTY AND FREE SERVICE COUPON



FATMAGIRI
impex
BRINGING YOU THE FUTURE TODAY

3rd Free Service Coupon

ISO 9001-2008
CERTIFIED COMPANY

FREE SERVICE COUPON 90 Days/200 hrs (Which ever is earlier)

Model Serial Number

PDI Date Service No. Purchase bill no. Date

Dealer's Office Seal

- Operations:
- Check and Test the Fuel Mixture.
 - Check and Clean the Air Filter
 - Check, Clean and Adjust the Spark plug
 - Check and Adjust the Carburetor Tuning
 - Check and Sharpen the cutting Tools
 - Start and Check the Noise, Vibration, Loosen / Fasteners etc.
 - Product familiarization on Usage
 - Routine maintenance and Storage

Dealer Signature.....

Customer Signature.....

Conditions: Operations listed have been performed to my entire satisfaction without any labour charges. Only consumables were charged.



agriculture | horticulture | sericulture | plantations | forestry | garden | health care

WARRANTY AND FREE SERVICE COUPON



Small Maintenance. Big Savings.



Small Maintenance. Big Savings.



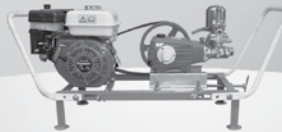
Small Maintenance. Big Savings.

Do's & Don'ts

- Always read the instruction manual supplied along with the equipments and understand the correct installation and operating procedures before attempting to use the equipments.
- It is important to use the personal protection equipments such as head helmet with visor, ear defenders, goggles, safety gloves, cut resistant shoes, trousers and jackets while operating potentially dangerous machines.
- Avoid untrained persons using the equipments. Children must not be allowed to handle these equipments.
- Always use genuine spares and accessories in repairs and usage to derive maximum life of the equipments.
- Always keep the equipments in good working condition to minimise loss of output as well as to reduce the pollution and save the environment.
- Do not use the machine within range of persons unless they wear protective clothing.
- Do not operate the machine when fatigued or under the influence of alcohol or drugs.
- When the machine is running, please maintain a constant water supply. Without water circulation will damage the sealing rings of the machine.
- To reduce the risk of injury, close supervision is necessary when a machine is used near children. High-pressure cleaner shall not be used by children or untrained person.
- Disconnect from the electrical power supply before carrying out user maintenance.

Agrimate Army For Pest Control

ANY WHERE - ANY TIME - ANY CROP




AGRIMATE[®]
Maximum Power - Super Economy

RATNAGIRI IMPEX PVT LTD
Annapurna House, #1/1G, 7th Cross, New Guddadahalli
Mysore Road, Bangalore-560 026
Customer Care: 1800-425-7475
email: customercare@ratnagiriimpex.com



Marketed by:
 **ratnagiri**
impex
BRINGING YOU THE FUTURE... NOW

www.ratnagiriimpex.com

AN ISO 9001:2008 CERTIFIED COMPANY