

USER MANUAL


AGRIMATE[®]
Maximum Power - Super Economy

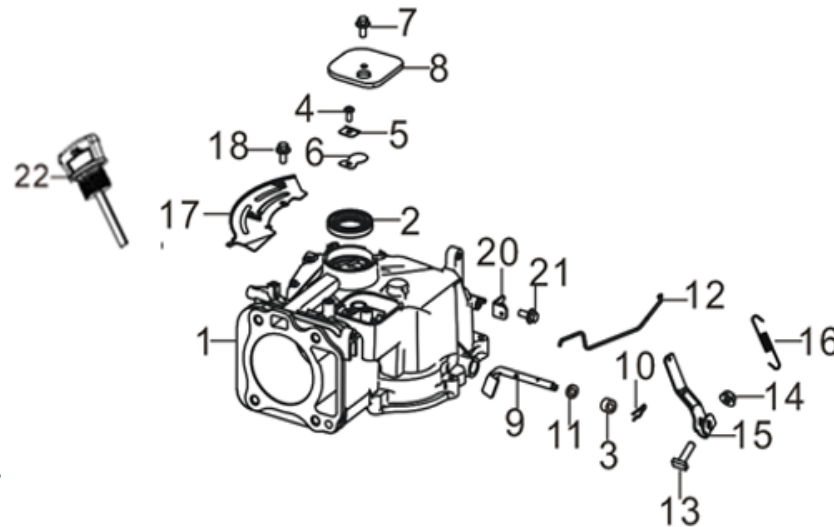
AGRIMATE LAWN MOWER - PUSH TYPE AM-LM-18PT-170P-UNIVERSAL



TECHNICAL SPECIFICATIONS

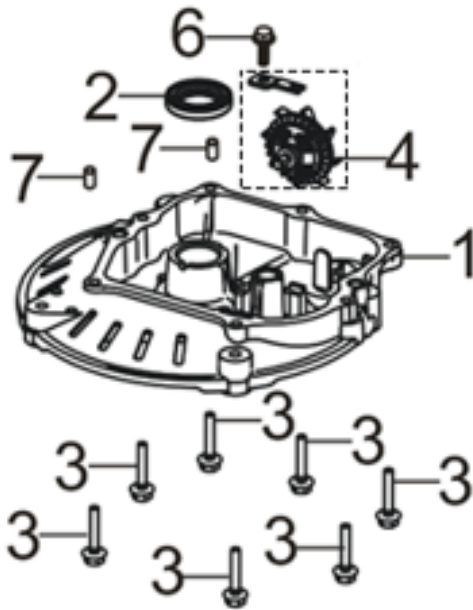
Model	AM-LM-18PT-170P
Cutting Width	46cm18"
Deck Material	Steel
Displacement	170 cc
Rear Discharge	Yes
Bagg Size	60 L
Cutting Height	25-75 cm 1"-3"
Front Wheel Size	20 mm8"
Rear Wheel Size	25 mm10"
Driving System	Push

CRANKCASE. / GEAR ASSY, GOVERNOR - A



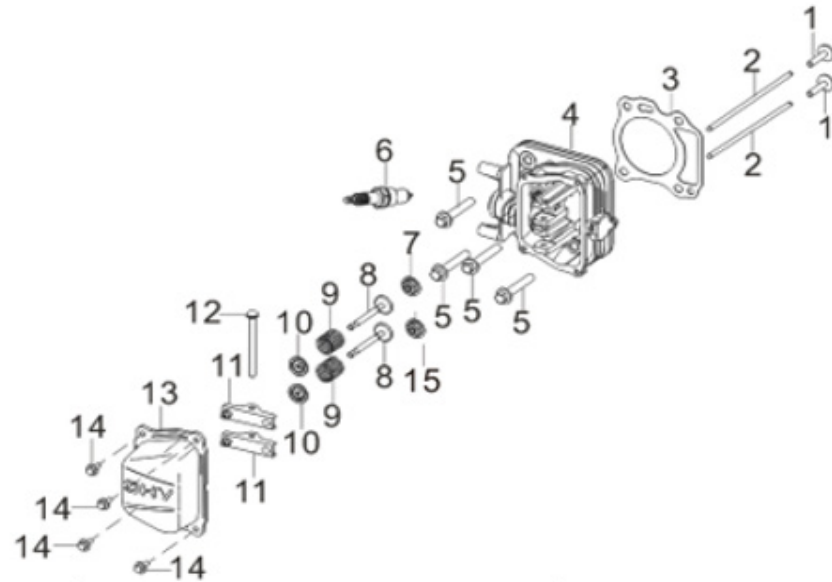
SL NO	PART NO	DESCRIPTION	SL NO	PART NO	DESCRIPTION
1	AM-LM-18PT-EA01	Crankcase Subassembly	12	AM-LM-18PT-EA12	Governeor Rod
2	AM-LM-18PT-EA02	Oil Seal	13	AM-LM-18PT-EA13	Governor Support Bolt
3	AM-LM-18PT-EA03	Oil Seal	14	AM-LM-18PT-EA14	Hexagon Nut With Flange
4	AM-LM-18PT-EA04	Cross-Recessed Pan Head Screw	15	AM-LM-18PT-EA15	Governor Bracket Subassembly
5	AM-LM-18PT-EA05	Breath Sheet	16	AM-LM-18PT-EA16	Governor Spring
6	AM-LM-18PT-EA06	Breath Sheet Stop Plate	17	AM-LM-18PT-EA17	Body Left Shield
7	AM-LM-18PT-EA07	Bolt	18	AM-LM-18PT-EA18	Bolt
8	AM-LM-18PT-EA08	Breath Groove Cover Plate	19	AM-LM-18PT-EA19	NA
9	AM-LM-18PT-EA09	Governor Arm	20	AM-LM-18PT-EA20	Throtile Operating Bottom Plate
10	AM-LM-18PT-EA10	Cotter Pin	21	AM-LM-18PT-EA21	Bolt
11	AM-LM-18PT-EA11	Flat Washer	22	AM-LM-18PT-EA22	Dipstick Oil

COVER SUBASSEMBLY, CRANKCASE - B



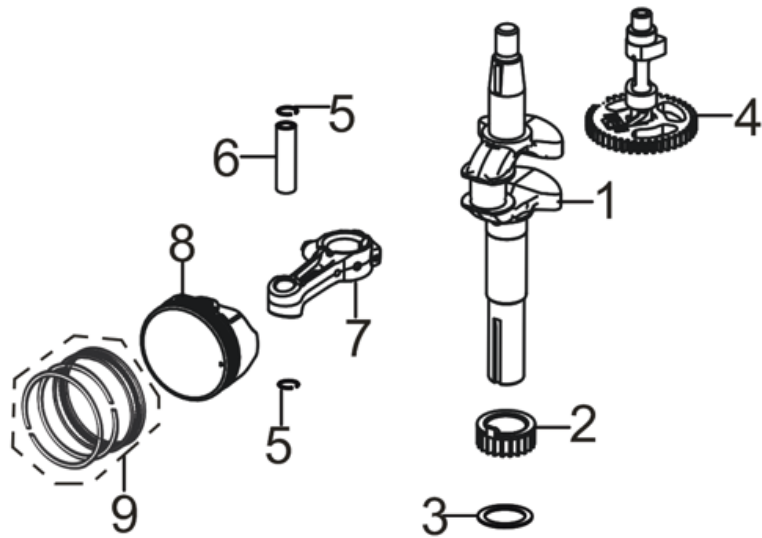
SL NO	PART NO	DESCRIPTION
1	AM-LM-18PT-EB01	Cover, Crankcase
2	AM-LM-18PT-EB02	Oil Seal
3	AM-LM-18PT-EB03	Bolt
4	AM-LM-18PT-EB04	Gear Assy, Governor
5	AM-LM-18PT-EB05	NA
6	AM-LM-18PT-EB06	Bolt
7	AM-LM-18PT-EB07	Position Pin

HEAD SUBASSEMBLY, CYLINDER / PLUG, SPARK - C



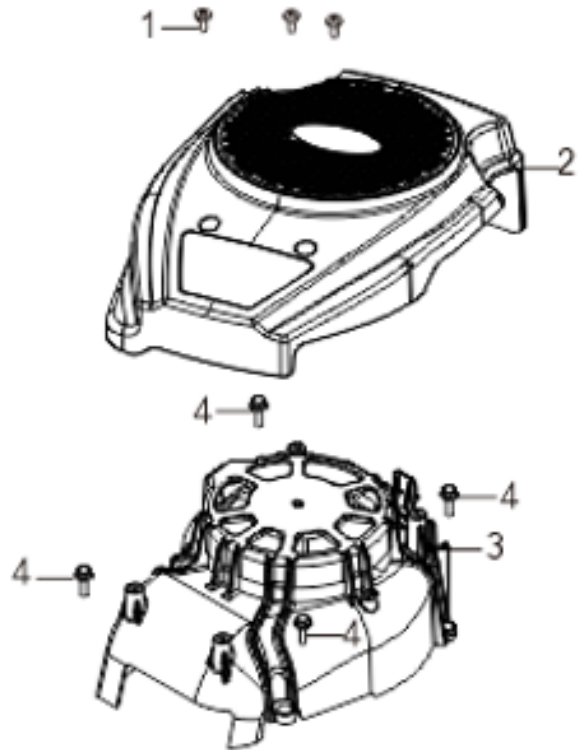
SL NO	PART NO	DESCRIPTION	SL NO	PART NO	DESCRIPTION
1	AM-LM-18PT-EC01	Valve Tappet	9	AM-LM-18PT-EC09	Valve Spring
2	AM-LM-18PT-EC02	Valve Lifter	10	AM-LM-18PT-EC10	Valve Spring Seat
3	AM-LM-18PT-EC03	Cylinder Head Gasket	11	AM-LM-18PT-EC11	Valve Rocker Subassembly
4	AM-LM-18PT-EC04	Cylinder Head Subassembly	12	AM-LM-18PT-EC12	Valve Rocker Shaft
5	AM-LM-18PT-EC05	Bolt	13	AM-LM-18PT-EC13	Cylinder Head Cover
6	AM-LM-18PT-EC06	Spark Plug	14	AM-LM-18PT-EC14	Bolt
7	AM-LM-18PT-EC07	Seal Guide	15	AM-LM-18PT-EC15	Seal Guide
8	AM-LM-18PT-EC08	Valves Set			

CRANKSHAFT CONNETING ROD - D



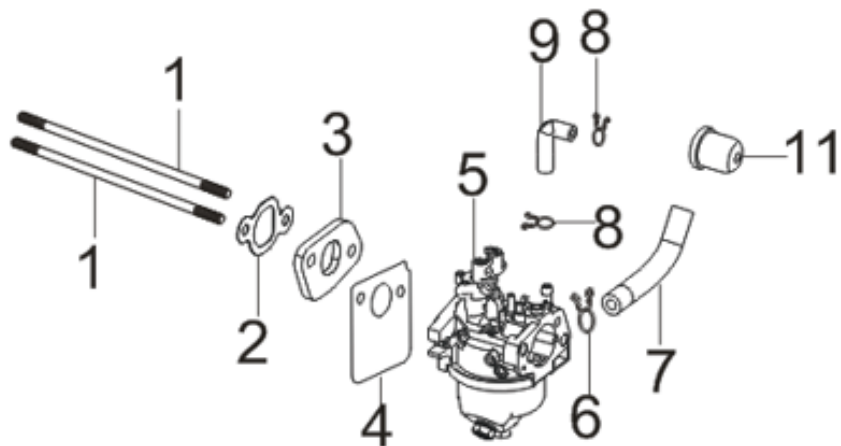
SL NO	PART NO	DESCRIPTION
1	AM-LM-18PT-ED01	Crankshaft Assy.
2	AM-LM-18PT-ED02	Timing Drive Gear
3	AM-LM-18PT-ED03	Flat Washer
4	AM-LM-18PT-ED04	Camshaft Assy.
5	AM-LM-18PT-ED05	Piston Pin Clip
6	AM-LM-18PT-ED06	Piston Pin
7	AM-LM-18PT-ED07	Connecting Rod
8	AM-LM-18PT-ED08	Piston
9	AM-LM-18PT-ED09	Piston Ring Assy

RECOIL STARTER - E



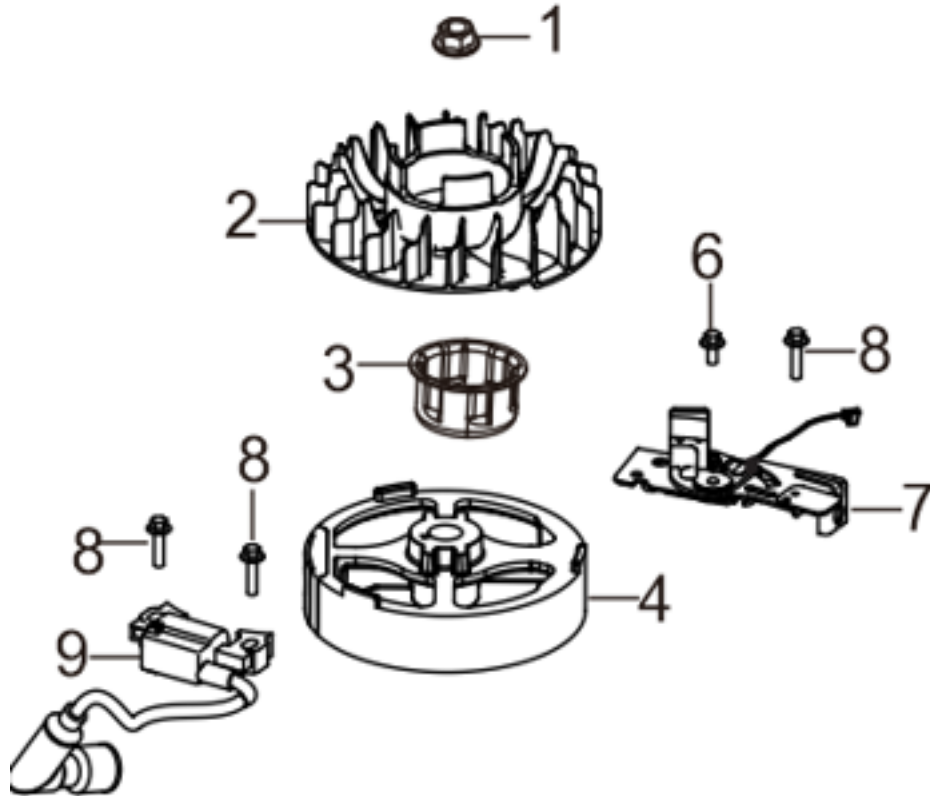
SL NO	PART NO	DESCRIPTION
1	AM-LM-18PT-EE01	Self-Tapping Screw
2	AM-LM-18PT-EE02	Housing, Engine
3	AM-LM-18PT-EE03	Recoil Starter Assy
4	AM-LM-18PT-EE04	Bolt

CARBURETOR ASSY. - F



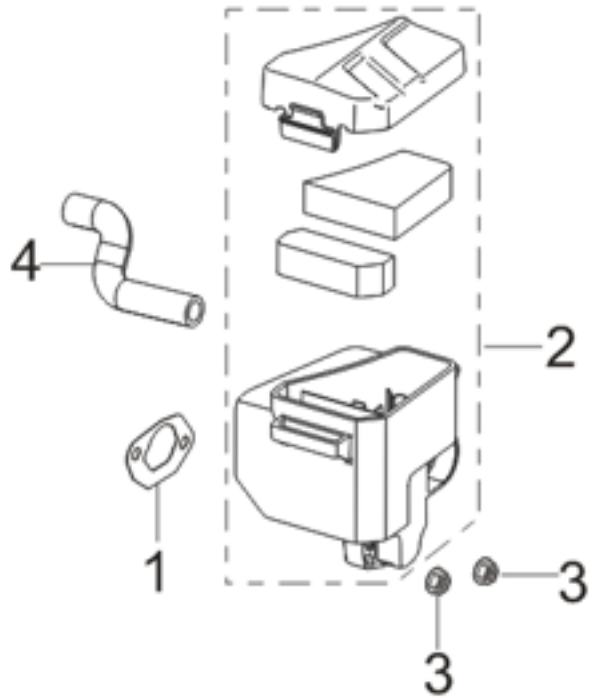
SL NO	PART NO	DESCRIPTION	SL NO	PART NO	DESCRIPTION
1	AM-LM-18PT-EF01	Stud Bolt	7	AM-LM-18PT-EF07	Fuel Tube
2	AM-LM-18PT-EF02	Inlet Gasket	8	AM-LM-18PT-EF08	Pipe Clamp
3	AM-LM-18PT-EF03	Carburetor Insulator Plate	9	AM-LM-18PT-EF09	Starting Riched Valve Tube
4	AM-LM-18PT-EF04	Insulator Plate Gasket	10	AM-LM-18PT-EF10	NA
5	AM-LM-18PT-EF05	Carburetor Assy.	11	AM-LM-18PT-EF11	Starting Riched Valve
6	AM-LM-18PT-EF06	Pipe Clamp			

FLYWHEEL / IMPELLER / STARTER PULLEY / IGNITION COIL -G



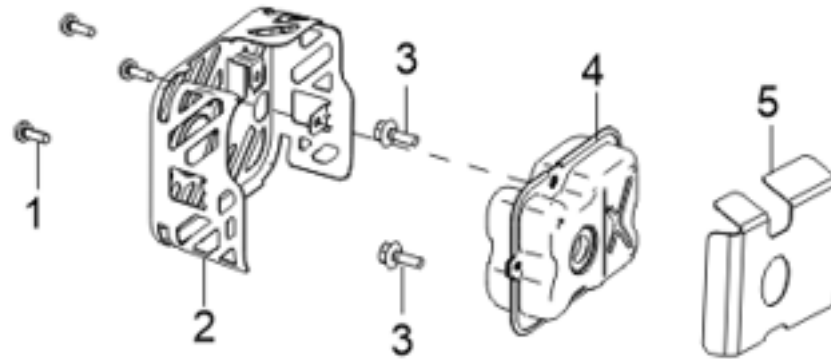
SL NO	PART NO	DESCRIPTION
1	AM-LM-18PT-EG01	Flywheel Nut
2	AM-LM-18PT-EG02	Impeller
3	AM-LM-18PT-EG03	Starter Pulley
4	AM-LM-18PT-EG04	Flywheel Subassembly
5	AM-LM-18PT-EG05	Shroud Lug
6	AM-LM-18PT-EG06	Bolt
7	AM-LM-18PT-EG07	Brake Assy.
8	AM-LM-18PT-EG08	Bolt
9	AM-LM-18PT-EG09	Ignition Coil
10	AM-LM-18PT-EG10	Bolt

AIR CLEANER -H



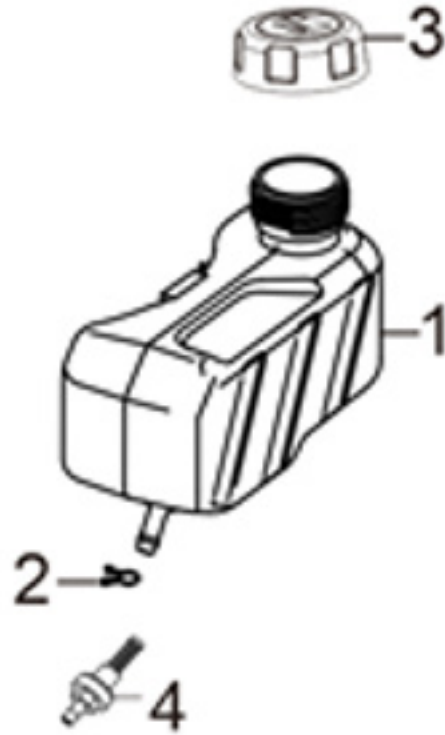
SL NO	PART NO	DESCRIPTION
1	AM-LM-18PT-EH01	Air Cleaner Seal Gasket
2	AM-LM-18PT-EH02	Air Cleaner
3	AM-LM-18PT-EH03	Hexagon Nut With Flange
4	AM-LM-18PT-EH04	Breather Tube

MUFFLER ASSY - J



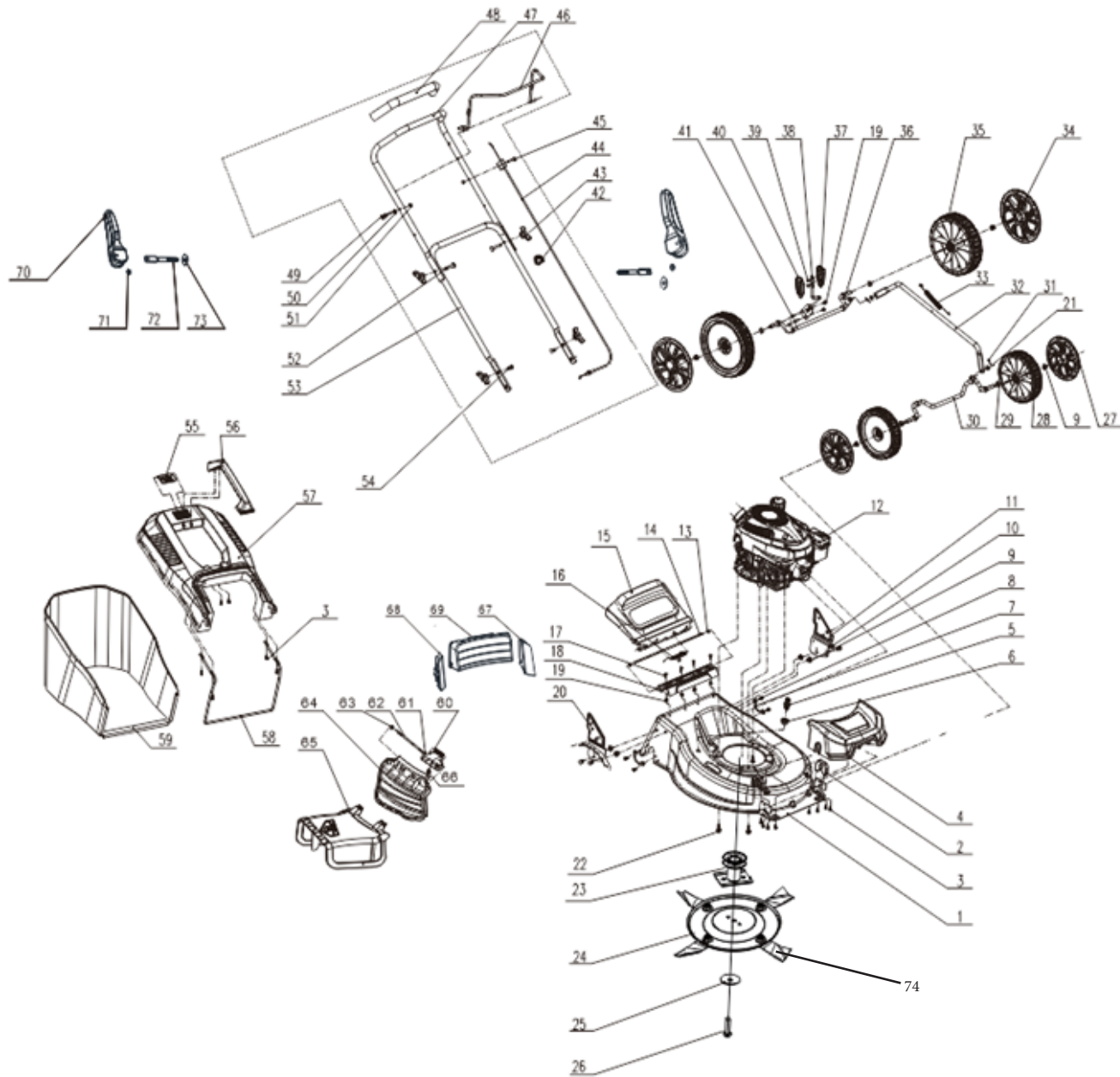
SL NO	PART NO	DESCRIPTION	SL NO	PART NO	DESCRIPTION
1	AM-LM-18PT-EH01	Air Cleaner Seal Gasket			
2	AM-LM-18PT-EH02	Air Cleaner			
3	AM-LM-18PT-EH03	Hexagon Nut With Flange			
4	AM-LM-18PT-EH04	Breather Tube			

FUEL TANK ASSY - K



SL NO	PART NO	DESCRIPTION
1	AM-LM-18PT-EK01	Fuel Tank Assy
2	AM-LM-18PT-EK02	Pipe Clamp
3	AM-LM-18PT-EK03	Fuel Tank Cover
4	AM-LM-18PT-EK04	Fuel Strainer

TRANSMISSION PART DIAGRAM



SL NO	PART NO.	DESCRIPTION	SL NO.	PART NO.	DESCRIPTION
1	AM-LM-18PT-T01	Deck	17	AM-LM-18PT-T17	Cross-Recessed Pan Head Screw
2	AM-LM-18PT-T02	Front Axle Plank	18	AM-LM-18PT-T18	Fender Black
3	AM-LM-18PT-T03	Screw	19	AM-LM-18PT-T19	Hexagon lock Nut
4	AM-LM-18PT-T04	Hood	20	AM-LM-18PT-T20	Right Handle Support
5	AM-LM-18PT-T05	Washing Nozzle	21	AM-LM-18PT-T21	Flat Washer - Grade A
6	AM-LM-18PT-T06	Nut, Flywheel	22	AM-LM-18PT-T22	Bolt
7	AM-LM-18PT-T07	Rear Axle Plank	23	AM-LM-18PT-T23	Blade Adapter
8	AM-LM-18PT-T08	Hexagon Head Self-Extrusion Screw	24	AM-LM-18PT-T24	Disc
9	AM-LM-18PT-T09	Flange Nut	25	AM-LM-18PT-T25	Disc Washer
10	AM-LM-18PT-T10	Bolts	26	AM-LM-18PT-T26	Flange bolt
11	AM-LM-18PT-T11	Left Handle Support	27	AM-LM-18PT-T27	Wheel Cover
12	AM-LM-18PT-T12	Engine	28	AM-LM-18PT-T28	Push Wheel
13	AM-LM-18PT-T13	Split Washer	29	AM-LM-18PT-T29	Wave Elastic Washer
14	AM-LM-18PT-T14	Rear Deflector Plank	30	AM-LM-18PT-T30	Shaft, Front Wheel
15	AM-LM-18PT-T15	Rear Deflector	31	AM-LM-18PT-T31	Cotter Pin
16	AM-LM-18PT-T16	Rear Deflector Spring	32	AM-LM-18PT-T32	Cutting Height Lever

SL NO	PART NO.	DESCRIPTION	SL NO.	PART NO.	DESCRIPTION
33	AM-LM-18PT-T33	Cutting Height Spring	49	AM-LM-18PT-T49	Bent Rope Bolt
34	AM-LM-18PT-T34	Wheel Cover	50	AM-LM-18PT-T50	Hexagon Nut With Flange
35	AM-LM-18PT-T35	Push Wheel	51	AM-LM-18PT-T51	Acorn Hexagon Nuts
36	AM-LM-18PT-T36	Shaft Rear Wheel	52	AM-LM-18PT-T52	Locking Bolt
37	AM-LM-18PT-T37	Cutting Height Lever Sleeve	53	AM-LM-18PT-T53	Inferior Handle
38	AM-LM-18PT-T38	Cutting Height Lever	54	AM-LM-18PT-T54	Half Round Head Square Neck Bolt
39	AM-LM-18PT-T39	Screw	55	AM-LM-18PT-T55	Straw Box Indicating Door
40	AM-LM-18PT-T40	Cutting Height Lever Sleeve	56	AM-LM-18PT-T56	Straw Box Handle
41	AM-LM-18PT-T41	Hexagonal Head Bolt - Full Thread	57	AM-LM-18PT-T57	Straw Box Upper Cover
42	AM-LM-18PT-T42	Wire Clip	58	AM-LM-18PT-T58	Straw Box Support
43	AM-LM-18PT-T43	Fast Screw	59	AM-LM-18PT-T59	Straw Box Lower Bag
44	AM-LM-18PT-T44	Flame-Out Cable	60	AM-LM-18PT-T60	Side Deflector Spring
45	AM-LM-18PT-T45	Cross Recessed Shaped Bolts	61	AM-LM-18PT-T61	Side Discharge Spport
46	AM-LM-18PT-T46	Brake Lever	62	AM-LM-18PT-T62	Side Deflector Pole
47	AM-LM-18PT-T47	Upper Handle	63	AM-LM-18PT-T63	Split Washer
48	AM-LM-18PT-T48	Sleeve, Handle Rubber	64	AM-LM-18PT-T64	Side Deflector

SL NO	PART NO.	DESCRIPTION	SL NO.	PART NO.	DESCRIPTION
65	AM-LM-18PT-T65	Side Discharge			
66	AM-LM-18PT-T66	Flange Nut			
67	AM-LM-18PT-T67	Block			
68	AM-LM-18PT-T68	Block			
69	AM-LM-18PT-T69	Rear Mulching Plug			
70	AM-LM-18PT-T70	Lock Handle			
71	AM-LM-18PT-T71	Split Washer			
72	AM-LM-18PT-T72	Pin Shaft			
73	AM-LM-18PT-T73	Flat Washer			
74	AM-LM-18PT-T74	Blade			

INSPECTION & MAINTAINANCE

For safety use, make sure the machine is cleaned every three months. Before working, make sure to inspect the filter and the nozzle and ensure there is no impurity. After working, make sure there is no water in the pump and the hose.

If the machine needs to be repaired in the guarantee period, please return the machine to the shop. You need to provide the certificate of purchase on order to repair or get the substitute.

Before packing, the machine should be cleaned, then use closed packaging, packaging should be firm. Store the machine in dry place.

For transportation safety. The machine should comply with ISTA.






Do not dispose of electrical machines as unsorted municipal waste, use separate collection facilities.

If electrical machines are disposed of in landfills or dumps, hazardous substances can leak into the ground water and get into the food chain, damaging your health and well being.

When replacing old machines with new ones, the retailer is legally obligated to take back your old machine for disposals at least free of charge.

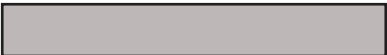




WARRANTY CARD

CUSTOMER COPY

DATE _____	DATE OF DELIVERY _____	DEALERS OFFICIAL SEAL	DEALERS SIGN _____
PURCHASERS NAME & ADDRESS _____ _____	 CUSTOMER SIGN		
PRODUCT NAME	PRODUCT SERIAL NO.	INVOICE/DN NO.	
			






I/Will accept the terms and conditions of warranty as in the warranty card

DEALERS COPY

DATE _____	DATE OF DELIVERY _____	DEALERS OFFICIAL SEAL	DEALERS SIGN _____
PURCHASERS NAME & ADDRESS _____ _____	 CUSTOMER SIGN		
PRODUCT NAME	PRODUCT SERIAL NO.	INVOICE/DN NO.	
			

I/Will accept the terms and conditions of warranty as in the warranty card

COMPANY COPY

DATE _____	DATE OF DELIVERY _____	DEALERS OFFICIAL SEAL	DEALERS SIGN _____
PURCHASERS NAME & ADDRESS _____ _____	 CUSTOMER SIGN		
PRODUCT NAME	PRODUCT SERIAL NO.	INVOICE/DN NO.	
			

I/Will accept the terms and conditions of warranty as in the warranty card

1. LIMITED WARRANTY PERIOD : For a period of six months from the date of Sale / delivery of the product which ever is earlier. 2. LIMITED WARRANTY OBLIGATION : Replacement of defective part(s) by authorized dealer are free of charges. If found defective by reasons of defective material / poor workmanship, parts will be replaced and there will be no value re-imbusement. 3. TERMS & CONDITIONS : a. Claims under warranty will be accepted on submission of Warranty Card duly filled and stamped by authorized dealer together with the original purchase document. : b. Shipping / transportation / Incidental charges incurred in replacing defective parts under warranty shall be borne by the purchaser

WARRANTY null & void if

- (i) Lack of maintenance, (ii) Incorrect use of the machine or tampering, (iii) Use of non-genuine spare parts, (iv) Usage of acids, solvents, or any flammable materials, (v) Non-usage of filter water / clear water / soft water & using water above 40°C temperature, (vi) While using the pressure washers to draw water which is contaminated with dust & solvents (eg. paint thinners, gasoline, oil, etc.), (vii) Repair done by unauthorized service people, (viii) Those parts subject to wear & tear due to normal operations and plastic parts, rubber items etc, (ix) Loose connections, faulty electrical fixtures & fluctuations in power supply.
- 4. Should any failure occur during or after the warranty period, customer does not have the right to interrupt payment / price discount.
- 5. Incidental or consequential damages like inconvenience commercial loss, loss of tie, mental agony etc.
- 6. Loss of any nature due to operation or non-operation is not covered under warranty.
- 7. All free service are at Dealer's service point only.
- 8. Warranty ceases if service is not done periodically.
- 9. The attached card should be completed and returned to Ratnagiri Impex Pvt. Ltd. for registration immediately after sale / delivery.
- 10. The warranty is void unless you register the warranty card with Ratnagiri Impex Pvt. Ltd.
- 11. The decision of Ratnagiri Impex Pvt. Ltd., in settling the warranty is final in all respects.
- 12. All disputes are subject to Bangalore Courts Jurisdiction

1. LIMITED WARRANTY PERIOD : For a period of six months from the date of Sale / delivery of the product which ever is earlier. 2. LIMITED WARRANTY OBLIGATION : Replacement of defective part(s) by authorized dealer are free of charges. If found defective by reasons of defective material / poor workmanship, parts will be replaced and there will be no value re-imbusement. 3. TERMS & CONDITIONS : a. Claims under warranty will be accepted on submission of Warranty Card duly filled and stamped by authorized dealer together with the original purchase document. : b. Shipping / transportation / Incidental charges incurred in replacing defective parts under warranty shall be borne by the purchaser.

WARRANTY null & void if

- (i) Lack of maintenance, (ii) Incorrect use of the machine or tampering, (iii) Use of non-genuine spare parts, (iv) Usage of acids, solvents, or any flammable materials, (v) Non-usage of filter water / clear water / soft water & using water above 40°C temperature, (vi) While using the pressure washers to draw water which is contaminated with dust & solvents (eg. paint thinners, gasoline, oil, etc.), (vii) Repair done by unauthorized service people, (viii) Those parts subject to wear & tear due to normal operations and plastic parts, rubber items etc, (ix) Loose connections, faulty electrical fixtures & fluctuations in power supply.
- 4. Should any failure occur during or after the warranty period, customer does not have the right to interrupt payment / price discount.
- 5. Incidental or consequential damages like inconvenience commercial loss, loss of tie, mental agony etc.
- 6. Loss of any nature due to operation or non-operation is not covered under warranty.
- 7. All free service are at Dealer's service point only.
- 8. Warranty ceases if service is not done periodically.
- 9. The attached card should be completed and returned to Ratnagiri Impex Pvt. Ltd. for registration immediately after sale / delivery.
- 10. The warranty is void unless you register the warranty card with Ratnagiri Impex Pvt. Ltd.
- 11. The decision of Ratnagiri Impex Pvt. Ltd., in settling the warranty is final in all respects.
- 12. All disputes are subject to Bangalore Courts Jurisdiction

1. LIMITED WARRANTY PERIOD : For a period of six months from the date of Sale / delivery of the product which ever is earlier. 2. LIMITED WARRANTY OBLIGATION : Replacement of defective part(s) by authorized dealer are free of charges. If found defective by reasons of defective material / poor workmanship, parts will be replaced and there will be no value re-imbusement. 3. TERMS & CONDITIONS : a. Claims under warranty will be accepted on submission of Warranty Card duly filled and stamped by authorized dealer together with the original purchase document. : b. Shipping / transportation / Incidental charges incurred in replacing defective parts under warranty shall be borne by the purchaser.

WARRANTY null & void if

- (i) Lack of maintenance, (ii) Incorrect use of the machine or tampering, (iii) Use of non-genuine spare parts, (iv) Usage of acids, solvents, or any flammable materials, (v) Non-usage of filter water / clear water / soft water & using water above 40°C temperature, (vi) While using the pressure washers to draw water which is contaminated with dust & solvents (eg. paint thinners, gasoline, oil, etc.), (vii) Repair done by unauthorized service people, (viii) Those parts subject to wear & tear due to normal operations and plastic parts, rubber items etc, (ix) Loose connections, faulty electrical fixtures & fluctuations in power supply.
- 4. Should any failure occur during or after the warranty period, customer does not have the right to interrupt payment / price discount.
- 5. Incidental or consequential damages like inconvenience commercial loss, loss of tie, mental agony etc.
- 6. Loss of any nature due to operation or non-operation is not covered under warranty.
- 7. All free service are at Dealer's service point only.
- 8. Warranty ceases if service is not done periodically.
- 9. The attached card should be completed and returned to Ratnagiri Impex Pvt. Ltd. for registration immediately after sale / delivery.
- 10. The warranty is void unless you register the warranty card with Ratnagiri Impex Pvt. Ltd.
- 11. The decision of Ratnagiri Impex Pvt. Ltd., in settling the warranty is final in all respects.
- 12. All disputes are subject to Bangalore Courts Jurisdiction



FREE SERVICE COUPON (30DAYS/30HRS. WHICHEVER IS EARLIER)

MODEL

SERIAL NUMBER

PDI DATE

SERVICE NO.

PURCHASE BILL NO.

DATE

DEALERS OFFICE SEAL

- 1. Check and test the fuel mixture
- 3. Check , clean and adjust the spark plug
- 5. Check and sparken the cutting tools
- 7. Start and check the noise, vibration, loosen etc..

OPERATIONS

- 2. check and clean the air filter
- 4. Check and adjust the carburetor tuning
- 6. Product familirisation on usage
- 8. Routine maintenance and shortage.

FREE SERVICE COUPON (30DAYS/30HRS. WHICHEVER IS EARLIER)

MODEL

SERIAL NUMBER

PDI DATE

SERVICE NO.

PURCHASE BILL NO.

DATE

DEALERS OFFICE SEAL

- 1. Check and test the fuel mixture
- 3. Check , clean and adjust the spark plug
- 5. Check and sparken the cutting tools
- 7. Start and check the noise, vibration, loosen etc..

OPERATIONS

- 2. check and clean the air filter
- 4. Check and adjust the carburetor tuning
- 6. Product familirisation on usage
- 8. Routine maintenance and shortage.

FREE SERVICE COUPON (30DAYS/30HRS. WHICHEVER IS EARLIER)

MODEL

SERIAL NUMBER

PDI DATE

SERVICE NO.

PURCHASE BILL NO.

DATE

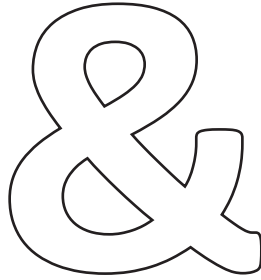
DEALERS OFFICE SEAL

- 1. Check and test the fuel mixture
- 3. Check , clean and adjust the spark plug
- 5. Check and sparken the cutting tools
- 7. Start and check the noise, vibration, loosen etc..

OPERATIONS

- 2. check and clean the air filter
- 4. Check and adjust the carburetor tuning
- 6. Product familirisation on usage
- 8. Routine maintenance and shortage.

DOS

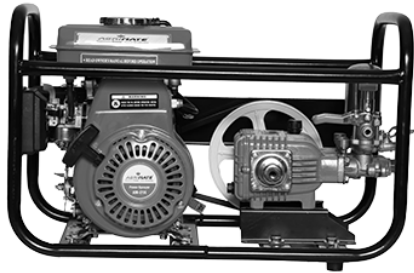
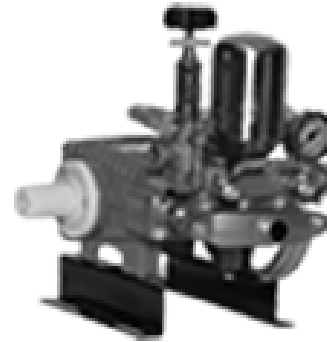


DONT'S

1. Always read the instruction manual supplied along with the equipments and understand the correct installation and operating procedures before attempting to use the equipments.
2. It is important to use the personal protection equipments such as head helmet with visor, ear defenders, goggles, safety gloves, cut resistant shoes, trousers and jackets while operating potentially dangerous machines
3. Avoid untrained persons using the equipments. Children must not be allowed to handle these equipments
4. Always use genuine spares and accessories in repairs and usage to derive maximum life of the equipments.
5. Always keep the equipments in good working condition to minimize loss of output as well as to reduce the pollution and save the environment
6. Do not use the machine within range of persons unless they wear protective clothing
7. Do not operate the machine when fatigued or under the influence of alcohol or drugs
8. When the machine is running, please maintain a constant water supply. Without water circulation will damage the sealing rings of the machine.
9. For more query kindly contact for our Service Center/Dealer/ franchise

Agrimate Army For Pest Control

ANY WHERE - ANY TIME - ANY CROP



Marketed by:
**ratnagiri
impex**
BRINGING YOU THE FUTURE... NOW

IMPORTED & MARKETED BY,
RATNAGIRI IMPEX PVT., LTD.,

Annapurna House, #1 / 1G, 7th Cross, New
Guddadahalli Mysore Road, Bangalore - 560 026

Missed Call : 7393 938 938 Email: ask@agrimart.in