

USER MANUAL


AGRIMATE[®]
Maximum Power - Super Economy

AGRIMATE LAWN MOWER - PUSH TYPE AM-LM-18PT-170P-UNIVERSAL



INTRODUCTION

Dear Sir/ Madam,

Thank you for choosing Agrimate product. You are the proud owner of high technology & durable machine. Trust that our Franchisee/Dealer installed the product & installed the product and explained you about the usage & service instructions. Please visit our autorised dealer for your future requirement of our other equipments, genuine spares, accessories and services. Service coupons are attached with this manual and you can avail free service to keep your machine fit always to use on demand.

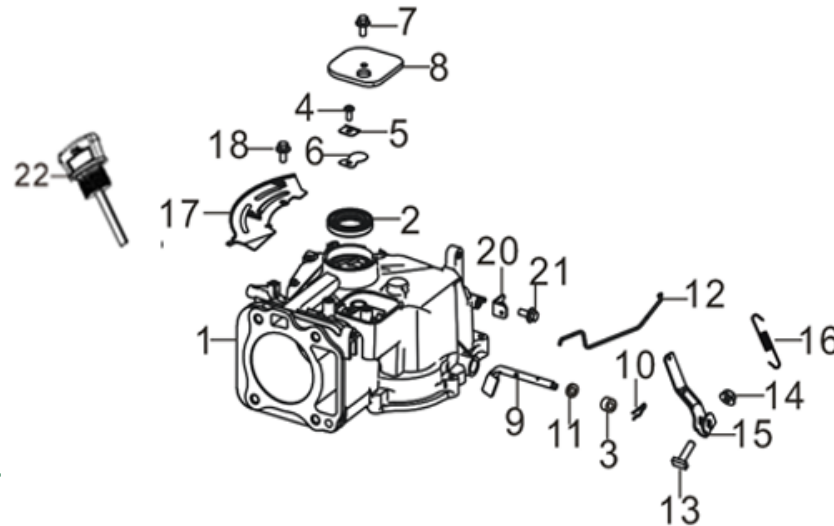
About Ratnagiri,

We import and market of high quality of agriculture wide range of equipments which we are selling through our authorised franchisee or dealer network. We are in this field from past years service the farmer. community. For further details, Please visit our website www.agrimart.in. & Give a missed call to 7393 938 938.

TECHNICAL SPECIFICATIONS

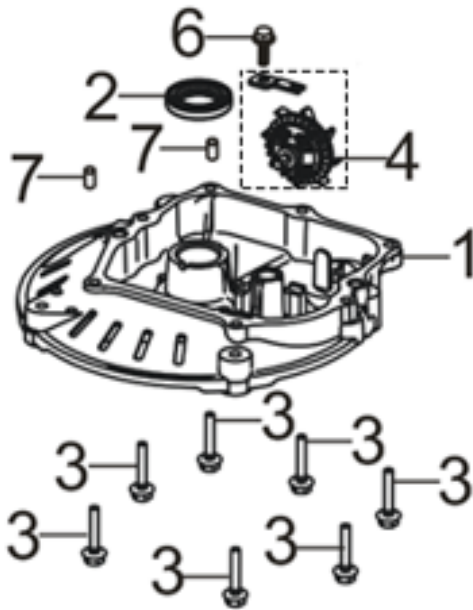
Model	AM-LM-18PT-170P
Cutting Width	46cm18"
Deck Material	Steel
Displacement	170 cc
Rear Discharge	Yes
Bagg Size	60 L
Cutting Height	25-75 cm 1"-3"
Front Wheel Size	20 mm8"
Rear Wheel Size	25 mm10"
Driving System	Push

CRANKCASE. / GEAR ASSY, GOVERNOR - A



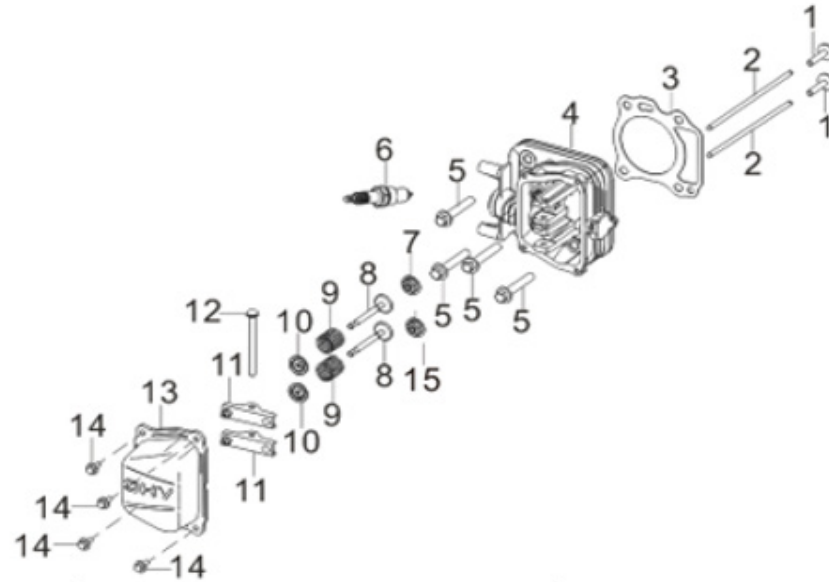
SL NO	PART NO	DESCRIPTION	SL NO	PART NO	DESCRIPTION
1	AM-LM-18PT-EA01	Crankcase Subassembly	12	AM-LM-18PT-EA12	Governeor Rod
2	AM-LM-18PT-EA02	Oil Seal	13	AM-LM-18PT-EA13	Governor Support Bolt
3	AM-LM-18PT-EA03	Oil Seal	14	AM-LM-18PT-EA14	Hexagon Nut With Flange
4	AM-LM-18PT-EA04	Cross-Recessed Pan Head Screw	15	AM-LM-18PT-EA15	Governor Bracket Subassembly
5	AM-LM-18PT-EA05	Breath Sheet	16	AM-LM-18PT-EA16	Governor Spring
6	AM-LM-18PT-EA06	Breath Sheet Stop Plate	17	AM-LM-18PT-EA17	Body Left Shield
7	AM-LM-18PT-EA07	Bolt	18	AM-LM-18PT-EA18	Bolt
8	AM-LM-18PT-EA08	Breath Groove Cover Plate	19	AM-LM-18PT-EA19	NA
9	AM-LM-18PT-EA09	Governor Arm	20	AM-LM-18PT-EA20	Throtile Operating Bottom Plate
10	AM-LM-18PT-EA10	Cotter Pin	21	AM-LM-18PT-EA21	Bolt
11	AM-LM-18PT-EA11	Flat Washer	22	AM-LM-18PT-EA22	Dipstick Oil

COVER SUBASSEMBLY, CRANKCASE - B



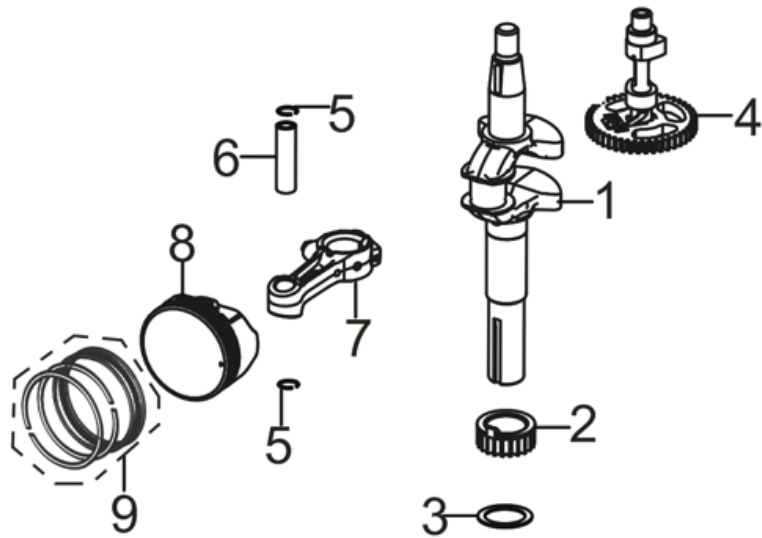
SL NO	PART NO	DESCRIPTION
1	AM-LM-18PT-EB01	Cover, Crankcase
2	AM-LM-18PT-EB02	Oil Seal
3	AM-LM-18PT-EB03	Bolt
4	AM-LM-18PT-EB04	Gear Assy, Governor
5	AM-LM-18PT-EB05	NA
6	AM-LM-18PT-EB06	Bolt
7	AM-LM-18PT-EB07	Position Pin

HEAD SUBASSEMBLY, CYLINDER / PLUG, SPARK - C



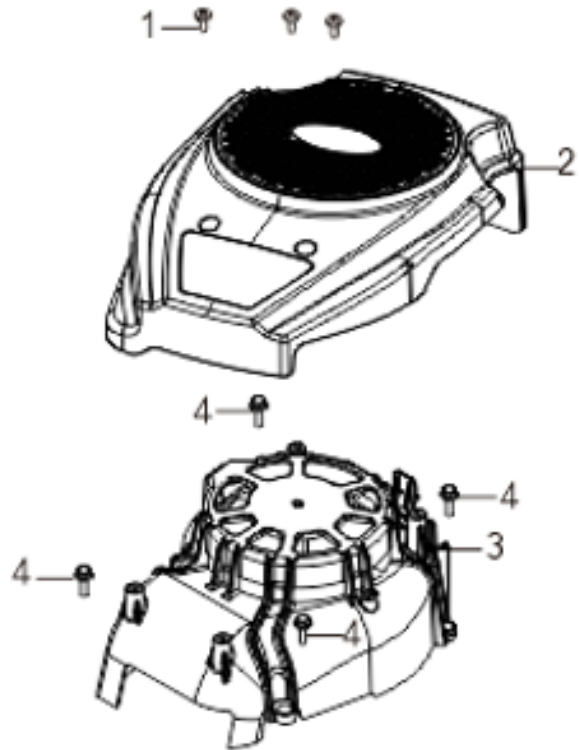
SL NO	PART NO	DESCRIPTION	SL NO	PART NO	DESCRIPTION
1	AM-LM-18PT-EC01	Valve Tappet	9	AM-LM-18PT-EC09	Valve Spring
2	AM-LM-18PT-EC02	Valve Lifter	10	AM-LM-18PT-EC10	Valve Spring Seat
3	AM-LM-18PT-EC03	Cylinder Head Gasket	11	AM-LM-18PT-EC11	Valve Rocker Subassembly
4	AM-LM-18PT-EC04	Cylinder Head Subassembly	12	AM-LM-18PT-EC12	Valve Rocker Shaft
5	AM-LM-18PT-EC05	Bolt	13	AM-LM-18PT-EC13	Cylinder Head Cover
6	AM-LM-18PT-EC06	Spark Plug	14	AM-LM-18PT-EC14	Bolt
7	AM-LM-18PT-EC07	Seal Guide	15	AM-LM-18PT-EC15	Seal Guide
8	AM-LM-18PT-EC08	Valves Set			

CRANKSHAFT CONNETING ROD - D



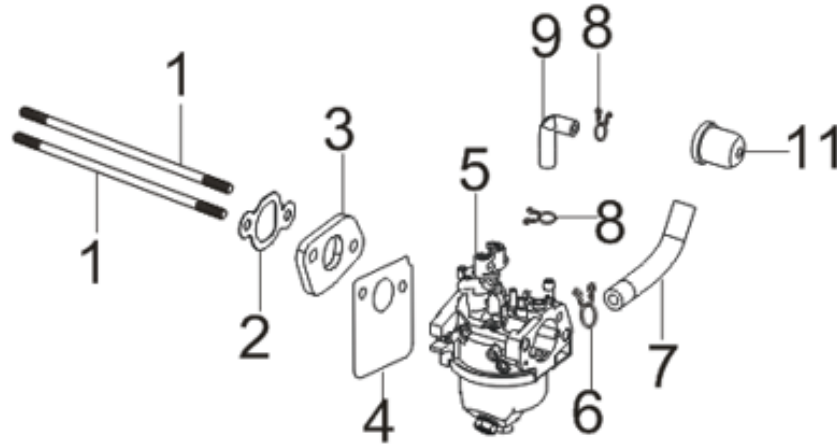
SL NO	PART NO	DESCRIPTION
1	AM-LM-18PT-ED01	Crankshaft Assy.
2	AM-LM-18PT-ED02	Timing Drive Gear
3	AM-LM-18PT-ED03	Flat Washer
4	AM-LM-18PT-ED04	Camshaft Assy.
5	AM-LM-18PT-ED05	Piston Pin Clip
6	AM-LM-18PT-ED06	Piston Pin
7	AM-LM-18PT-ED07	Connecting Rod
8	AM-LM-18PT-ED08	Piston
9	AM-LM-18PT-ED09	Piston Ring Assy

RECOIL STARTER - E



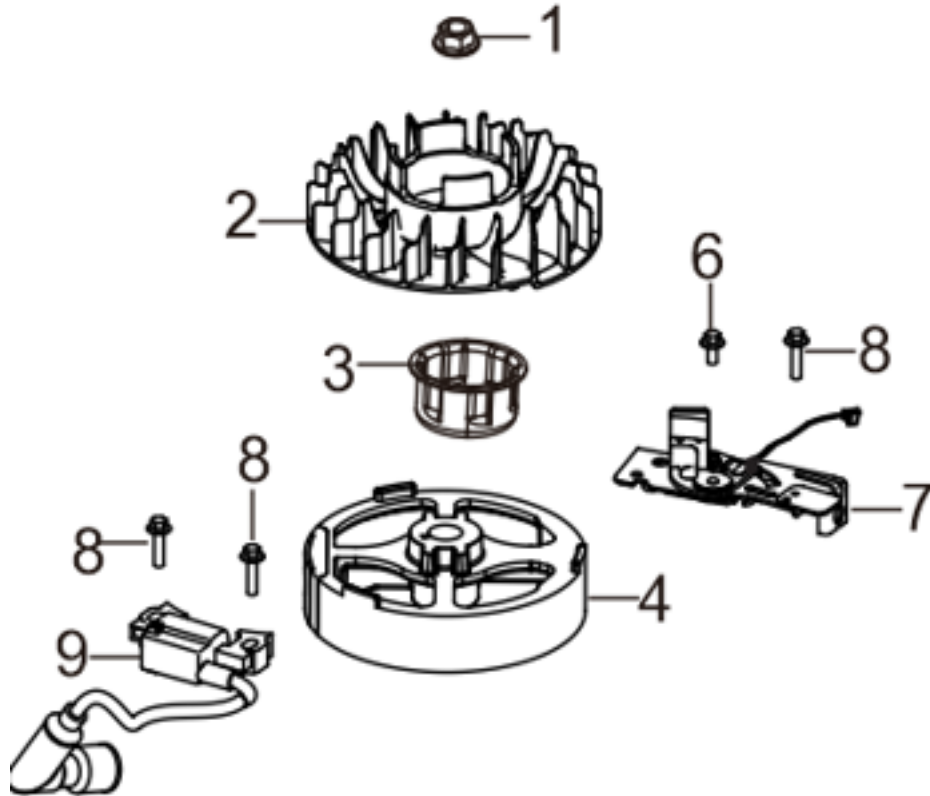
SL NO	PART NO	DESCRIPTION
1	AM-LM-18PT-EE01	Self-Tapping Screw
2	AM-LM-18PT-EE02	Housing, Engine
3	AM-LM-18PT-EE03	Recoil Starter Assy
4	AM-LM-18PT-EE04	Bolt

CARBURETOR ASSY. - F



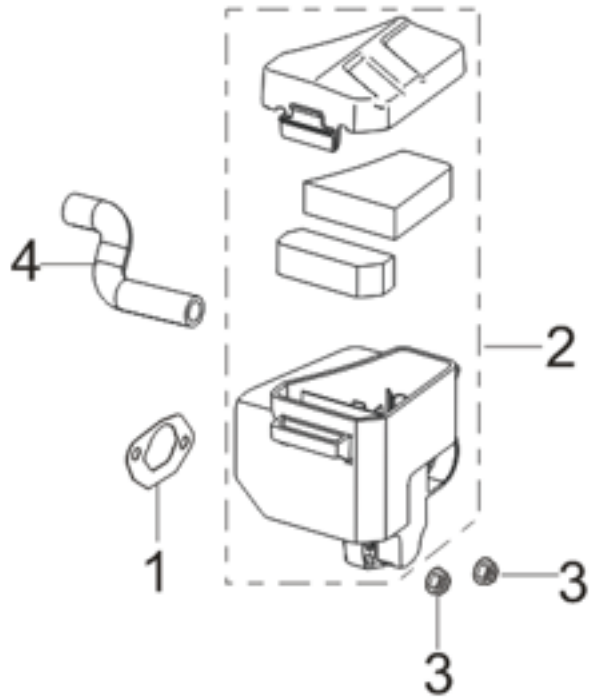
SL NO	PART NO	DESCRIPTION	SL NO	PART NO	DESCRIPTION
1	AM-LM-18PT-EF01	Stud Bolt	7	AM-LM-18PT-EF07	Fuel Tube
2	AM-LM-18PT-EF02	Inlet Gasket	8	AM-LM-18PT-EF08	Pipe Clamp
3	AM-LM-18PT-EF03	Carburetor Insulator Plate	9	AM-LM-18PT-EF09	Starting Riched Valve Tube
4	AM-LM-18PT-EF04	Insulator Plate Gasket	10	AM-LM-18PT-EF10	NA
5	AM-LM-18PT-EF05	Carburetor Assy.	11	AM-LM-18PT-EF11	Starting Riched Valve
6	AM-LM-18PT-EF06	Pipe Clamp			

FLYWHEEL / IMPELLER / STARTER PULLEY / IGNITION COIL -G



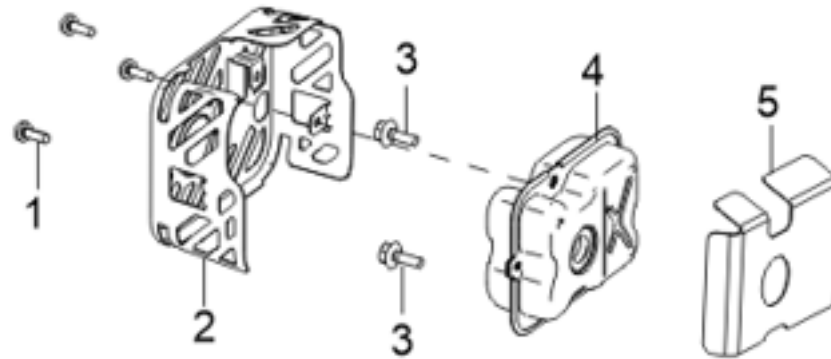
SL NO	PART NO	DESCRIPTION
1	AM-LM-18PT-EG01	Flywheel Nut
2	AM-LM-18PT-EG02	Impeller
3	AM-LM-18PT-EG03	Starter Pulley
4	AM-LM-18PT-EG04	Flywheel Subassembly
5	AM-LM-18PT-EG05	Shroud Lug
6	AM-LM-18PT-EG06	Bolt
7	AM-LM-18PT-EG07	Brake Assy.
8	AM-LM-18PT-EG08	Bolt
9	AM-LM-18PT-EG09	Ignition Coil
10	AM-LM-18PT-EG10	Bolt

AIR CLEANER -H



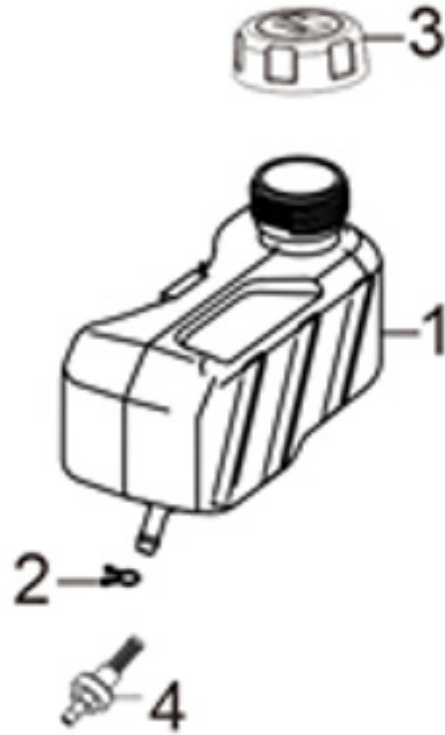
SL NO	PART NO	DESCRIPTION
1	AM-LM-18PT-EH01	Air Cleaner Seal Gasket
2	AM-LM-18PT-EH02	Air Cleaner
3	AM-LM-18PT-EH03	Hexagon Nut With Flange
4	AM-LM-18PT-EH04	Breather Tube

MUFFLER ASSY - J



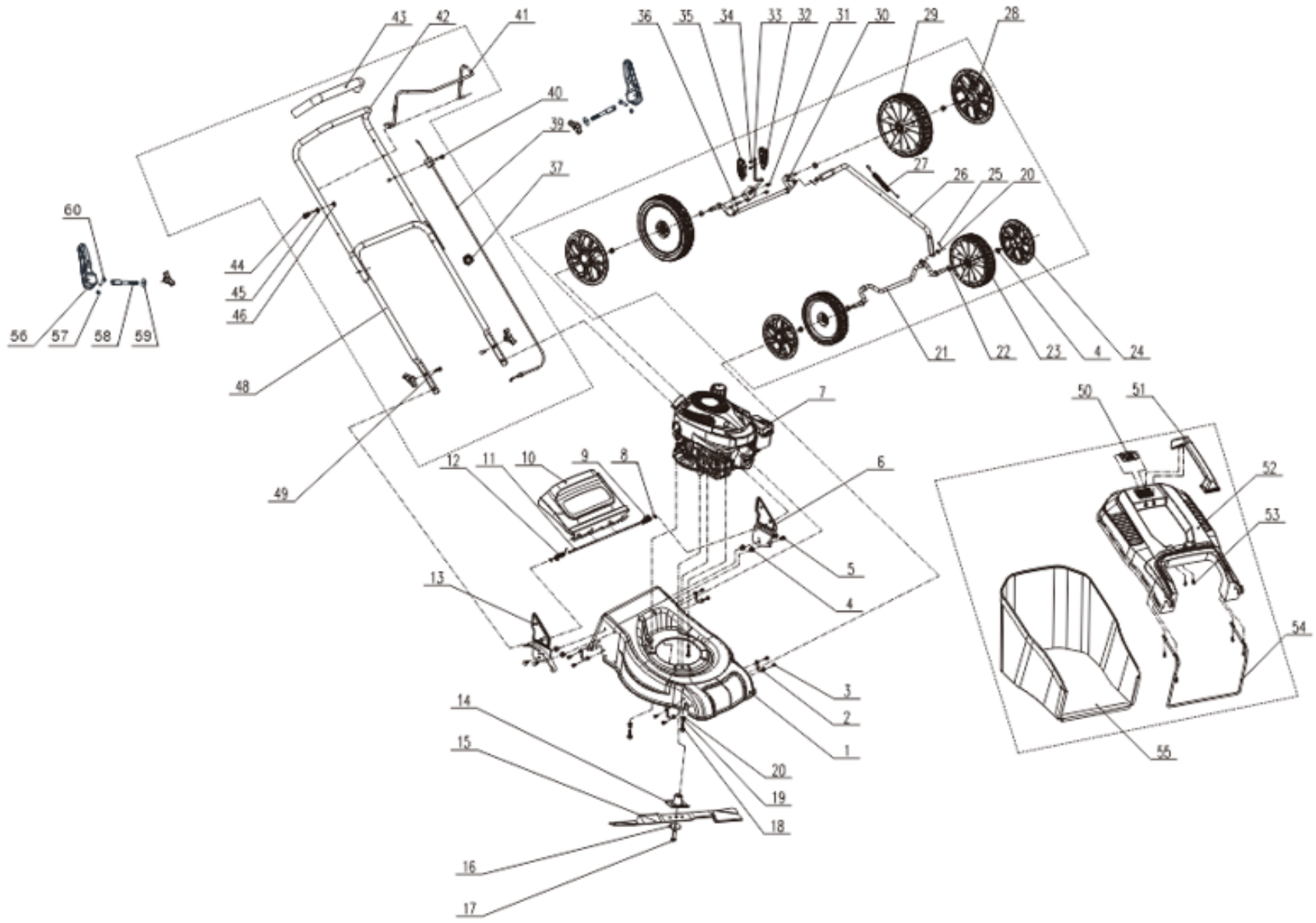
SL NO	PART NO	DESCRIPTION	SL NO	PART NO	DESCRIPTION
1	AM-LM-18PT-EH01	Air Cleaner Seal Gasket			
2	AM-LM-18PT-EH02	Air Cleaner			
3	AM-LM-18PT-EH03	Hexagon Nut With Flange			
4	AM-LM-18PT-EH04	Breather Tube			

FUEL TANK ASSY - K



SL NO	PART NO	DESCRIPTION
1	AM-LM-18PT-EK01	Fuel Tank Assy
2	AM-LM-18PT-EK02	Pipe Clamp
3	AM-LM-18PT-EK03	Fuel Tank Cover
4	AM-LM-18PT-EK04	Fuel Strainer

TRANSMISSION PART DIAGRAM








SL NO	PART NO	DESCRIPTION	SL NO	PART NO	DESCRIPTION
1	AM-LM-18PT-T01	Deck	13	AM-LM-18PT-T13	Right Handle Support
2	AM-LM-18PT-T02	Rear Axle Plank	14	AM-LM-18PT-T14	Blade Adapter
3	AM-LM-18PT-T03	Hexagon Head Self-Extrusion Screw	15	AM-LM-18PT-T15	Blade
4	AM-LM-18PT-T04	Nut	16	AM-LM-18PT-T16	Disc Washer
5	AM-LM-18PT-T05	Bolt	17	AM-LM-18PT-T17	Bolt
6	AM-LM-18PT-T06	Left Handle Support	18	AM-LM-18PT-T18	Bolt
7	AM-LM-18PT-T07	Engine	19	AM-LM-18PT-T19	Standard Spring Washer
8	AM-LM-18PT-T08	Split Washer	20	AM-LM-18PT-T20	Flat Washer - Grade A
9	AM-LM-18PT-T09	Rear Deflector Spring	21	AM-LM-18PT-T21	Shaft, Front Wheel
10	AM-LM-18PT-T10	Rear Deflector	22	AM-LM-18PT-T22	Wave Elastic Washer
11	AM-LM-18PT-T11	Rear Deflector Plank	23	AM-LM-18PT-T23	Push Wheel
12	AM-LM-18PT-T12	Rear Deflector Spring	24	AM-LM-18PT-T24	Wheel Cover

SL NO	PART NO	DESCRIPTION	SL NO	PART NO	DESCRIPTION
25	AM-LM-18PT-T25	Cotter Pin	37	AM-LM-18PT-T37	Wire Clip
26	AM-LM-18PT-T26	Cutting Height Lever	38	AM-LM-18PT-T38	Fast Screw
27	AM-LM-18PT-T27	Cutting Height Spring	39	AM-LM-18PT-T39	Flame-Out Cable
28	AM-LM-18PT-T28	Wheel Cover	40	AM-LM-18PT-T40	Cross Recessed Shaped Bolts
29	AM-LM-18PT-T29	Push Wheel	41	AM-LM-18PT-T41	Brake Lever
30	AM-LM-18PT-T30	Shaft Rear Wheel	42	AM-LM-18PT-T42	Upper Handle
31	AM-LM-18PT-T31	Nut	43	AM-LM-18PT-T43	Sleeve, Handle Rubber
32	AM-LM-18PT-T32	Cutting Height Lever Sleeve	44	AM-LM-18PT-T44	Bent Rope Bolt
33	AM-LM-18PT-T33	Cutting Height Lever	45	AM-LM-18PT-T45	Hexagon Nut With Flange
34	AM-LM-18PT-T34	Screw	46	AM-LM-18PT-T46	Acorn Hexagon Nuts
35	AM-LM-18PT-T35	Cutting Height Lever Sleeve	47	AM-LM-18PT-T47	NA
36	AM-LM-18PT-T36	Bolt	48	AM-LM-18PT-T48	Inferior Handle

SL NO	PART NO	DESCRIPTION	SL NO	PART NO	DESCRIPTION
49	AM-LM-18PT-T49	Bolt			
50	AM-LM-18PT-T50	Straw Box Indicating Door			
51	AM-LM-18PT-T51	Straw Box Handle			
52	AM-LM-18PT-T52	Straw Box Upper Cover			
53	AM-LM-18PT-T53	Screw			
54	AM-LM-18PT-T54	Straw Box Support			
55	AM-LM-18PT-T55	Straw Box Lower Bag			
56	AM-LM-18PT-T56	Lock Handle			
57	AM-LM-18PT-T57	Split Washer			
58	AM-LM-18PT-T58	Locking Bolt			
59	AM-LM-18PT-T59	Flat Washer			
60	AM-LM-18PT-T60	Pin Shaft			






WARRANTY CARD

CUSTOMER COPY

DATE _____	DATE OF DELIVERY _____	DEALERS OFFICIAL SEAL	DEALERS SIGN _____
PURCHASERS NAME & ADDRESS _____ _____	 CUSTOMER SIGN		
PRODUCT NAME	PRODUCT SERIAL NO.	INVOICE/DN NO.	
			






I/Will accept the terms and conditions of warranty as in the warranty card

DEALERS COPY

DATE _____	DATE OF DELIVERY _____	DEALERS OFFICIAL SEAL	DEALERS SIGN _____
PURCHASERS NAME & ADDRESS _____ _____	 CUSTOMER SIGN		
PRODUCT NAME	PRODUCT SERIAL NO.	INVOICE/DN NO.	
			

I/Will accept the terms and conditions of warranty as in the warranty card

COMPANY COPY

DATE _____	DATE OF DELIVERY _____	DEALERS OFFICIAL SEAL	DEALERS SIGN _____
PURCHASERS NAME & ADDRESS _____ _____	 CUSTOMER SIGN		
PRODUCT NAME	PRODUCT SERIAL NO.	INVOICE/DN NO.	
			

I/Will accept the terms and conditions of warranty as in the warranty card

1. LIMITED WARRANTY PERIOD : For a period of six months from the date of Sale / delivery of the product which ever is earlier. 2. LIMITED WARRANTY OBLIGATION : Replacement of defective part(s) by authorized dealer are free of charges. If found defective by reasons of defective material / poor workmanship, parts will be replaced and there will be no value re-imburement. 3. TERMS & CONDITIONS : a. Claims under warranty will be accepted on submission of Warranty Card duly filled and stamped by authorized dealer together with the original purchase document. : b. Shipping / transportation / Incidental charges incurred in replacing defective parts under warranty shall be borne by the purchaser

WARRANTY null & void if

- (i) Lack of maintenance, (ii) Incorrect use of the machine or tampering, (iii) Use of non-genuine spare parts, (iv) Usage of acids, solvents, or any flammable materials, (v) Non-usage of filter water / clear water / soft water & using water above 40°C temperature, (vi) While using the pressure washers to draw water which is contaminated with dust & solvents (eg. paint thinners, gasoline, oil, etc.), (vii) Repair done by unauthorized service people, (viii) Those parts subject to wear & tear due to normal operations and plastic parts, rubber items etc, (ix) Loose connections, faulty electrical fixtures & fluctuations in power supply.
- 4. Should any failure occur during or after the warranty period, customer does not have the right to interrupt payment / price discount.
- 5. Incidental or consequential damages like inconvenience commercial loss, loss of tie, mental agony etc.
- 6. Loss of any nature due to operation or non-operation is not covered under warranty.
- 7. All free service are at Dealer's service point only.
- 8. Warranty ceases if service is not done periodically.
- 9. The attached card should be completed and returned to Ratnagiri Impex Pvt. Ltd. for registration immediately after sale / delivery.
- 10. The warranty is void unless you register the warranty card with Ratnagiri Impex Pvt. Ltd.
- 11. The decision of Ratnagiri Impex Pvt. Ltd., in settling the warranty is final in all respects.
- 12. All disputes are subject to Bangalore Courts Jurisdiction

1. LIMITED WARRANTY PERIOD : For a period of six months from the date of Sale / delivery of the product which ever is earlier. 2. LIMITED WARRANTY OBLIGATION : Replacement of defective part(s) by authorized dealer are free of charges. If found defective by reasons of defective material / poor workmanship, parts will be replaced and there will be no value re-imburement. 3. TERMS & CONDITIONS : a. Claims under warranty will be accepted on submission of Warranty Card duly filled and stamped by authorized dealer together with the original purchase document. : b. Shipping / transportation / Incidental charges incurred in replacing defective parts under warranty shall be borne by the purchaser.

WARRANTY null & void if

- (i) Lack of maintenance, (ii) Incorrect use of the machine or tampering, (iii) Use of non-genuine spare parts, (iv) Usage of acids, solvents, or any flammable materials, (v) Non-usage of filter water / clear water / soft water & using water above 40°C temperature, (vi) While using the pressure washers to draw water which is contaminated with dust & solvents (eg. paint thinners, gasoline, oil, etc.), (vii) Repair done by unauthorized service people, (viii) Those parts subject to wear & tear due to normal operations and plastic parts, rubber items etc, (ix) Loose connections, faulty electrical fixtures & fluctuations in power supply.
- 4. Should any failure occur during or after the warranty period, customer does not have the right to interrupt payment / price discount.
- 5. Incidental or consequential damages like inconvenience commercial loss, loss of tie, mental agony etc.
- 6. Loss of any nature due to operation or non-operation is not covered under warranty.
- 7. All free service are at Dealer's service point only.
- 8. Warranty ceases if service is not done periodically.
- 9. The attached card should be completed and returned to Ratnagiri Impex Pvt. Ltd. for registration immediately after sale / delivery.
- 10. The warranty is void unless you register the warranty card with Ratnagiri Impex Pvt. Ltd.
- 11. The decision of Ratnagiri Impex Pvt. Ltd., in settling the warranty is final in all respects.
- 12. All disputes are subject to Bangalore Courts Jurisdiction

1. LIMITED WARRANTY PERIOD : For a period of six months from the date of Sale / delivery of the product which ever is earlier. 2. LIMITED WARRANTY OBLIGATION : Replacement of defective part(s) by authorized dealer are free of charges. If found defective by reasons of defective material / poor workmanship, parts will be replaced and there will be no value re-imburement. 3. TERMS & CONDITIONS : a. Claims under warranty will be accepted on submission of Warranty Card duly filled and stamped by authorized dealer together with the original purchase document. : b. Shipping / transportation / Incidental charges incurred in replacing defective parts under warranty shall be borne by the purchaser.

WARRANTY null & void if

- (i) Lack of maintenance, (ii) Incorrect use of the machine or tampering, (iii) Use of non-genuine spare parts, (iv) Usage of acids, solvents, or any flammable materials, (v) Non-usage of filter water / clear water / soft water & using water above 40°C temperature, (vi) While using the pressure washers to draw water which is contaminated with dust & solvents (eg. paint thinners, gasoline, oil, etc.), (vii) Repair done by unauthorized service people, (viii) Those parts subject to wear & tear due to normal operations and plastic parts, rubber items etc, (ix) Loose connections, faulty electrical fixtures & fluctuations in power supply.
- 4. Should any failure occur during or after the warranty period, customer does not have the right to interrupt payment / price discount.
- 5. Incidental or consequential damages like inconvenience commercial loss, loss of tie, mental agony etc.
- 6. Loss of any nature due to operation or non-operation is not covered under warranty.
- 7. All free service are at Dealer's service point only.
- 8. Warranty ceases if service is not done periodically.
- 9. The attached card should be completed and returned to Ratnagiri Impex Pvt. Ltd. for registration immediately after sale / delivery.
- 10. The warranty is void unless you register the warranty card with Ratnagiri Impex Pvt. Ltd.
- 11. The decision of Ratnagiri Impex Pvt. Ltd., in settling the warranty is final in all respects.
- 12. All disputes are subject to Bangalore Courts Jurisdiction



FREE SERVICE COUPON (30DAYS/30HRS. WHICHEVER IS EARLIER)

MODEL

SERIAL NUMBER

PDI DATE

SERVICE NO.

PURCHASE BILL NO.

DATE

DEALERS OFFICE SEAL

- 1. Check and test the fuel mixture
- 3. Check , clean and adjust the spark plug
- 5. Check and sparken the cutting tools
- 7. Start and check the noise, vibration, loosen etc..

OPERATIONS

- 2. check and clean the air filter
- 4. Check and adjust the carburetor tuning
- 6. Product familirisation on usage
- 8. Routine maintenance and shortage.

FREE SERVICE COUPON (30DAYS/30HRS. WHICHEVER IS EARLIER)

MODEL

SERIAL NUMBER

PDI DATE

SERVICE NO.

PURCHASE BILL NO.

DATE

DEALERS OFFICE SEAL

- 1. Check and test the fuel mixture
- 3. Check , clean and adjust the spark plug
- 5. Check and sparken the cutting tools
- 7. Start and check the noise, vibration, loosen etc..

OPERATIONS

- 2. check and clean the air filter
- 4. Check and adjust the carburetor tuning
- 6. Product familirisation on usage
- 8. Routine maintenance and shortage.

FREE SERVICE COUPON (30DAYS/30HRS. WHICHEVER IS EARLIER)

MODEL

SERIAL NUMBER

PDI DATE

SERVICE NO.

PURCHASE BILL NO.

DATE

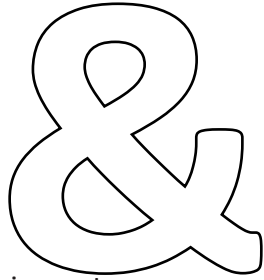
DEALERS OFFICE SEAL

- 1. Check and test the fuel mixture
- 3. Check , clean and adjust the spark plug
- 5. Check and sparken the cutting tools
- 7. Start and check the noise, vibration, loosen etc..

OPERATIONS

- 2. check and clean the air filter
- 4. Check and adjust the carburetor tuning
- 6. Product familirisation on usage
- 8. Routine maintenance and shortage.

DOS



DONT'S

attempting to use the equipments.

1. Always read the instruction manual supplied along with the equipments and understand the correct installation and operating procedures before

trousers and jackets while operating potentially dangerous machines
2. It is important to use the personal protection equipments such as head helmet with visor, ear defenders, goggles, safety gloves, cut resistant shoes,
3. Avoid untrained persons using the equipments. Children must not be allowed to handle these equipments
4. Always use genuine spares and accessories in repairs and usage to derive maximum life of the equipments.
5. Always keep the equipments in good working condition to minimize loss of output as well as to reduce the pollution and save the environment
6. Do not use the machine within range of persons unless they wear protective clothing
7. Do not operate the machine when fatigued or under the influence of alcohol or drugs
8. For more query kindly contact for our Service Center/Dealer/ franchise

NO. 1 CHOICE OF FARMERS SINCE 1999



Marketed by:
**ratnagiri
impex**
BRINGING YOU THE FUTURE... NOW

RATNAGIRI IMPEX PVT., LTD.,

Annapurna House, #1 / 1G, 7th Cross, New
Guddadahalli

Mysore Road, Bangalore - 560 026

Missed Call : 7393 938 938

Email: ask@agrimart.in