

## AGRIMATE LAWN MOWER - SELF PROPELLED

AM-LM-18SP-170P

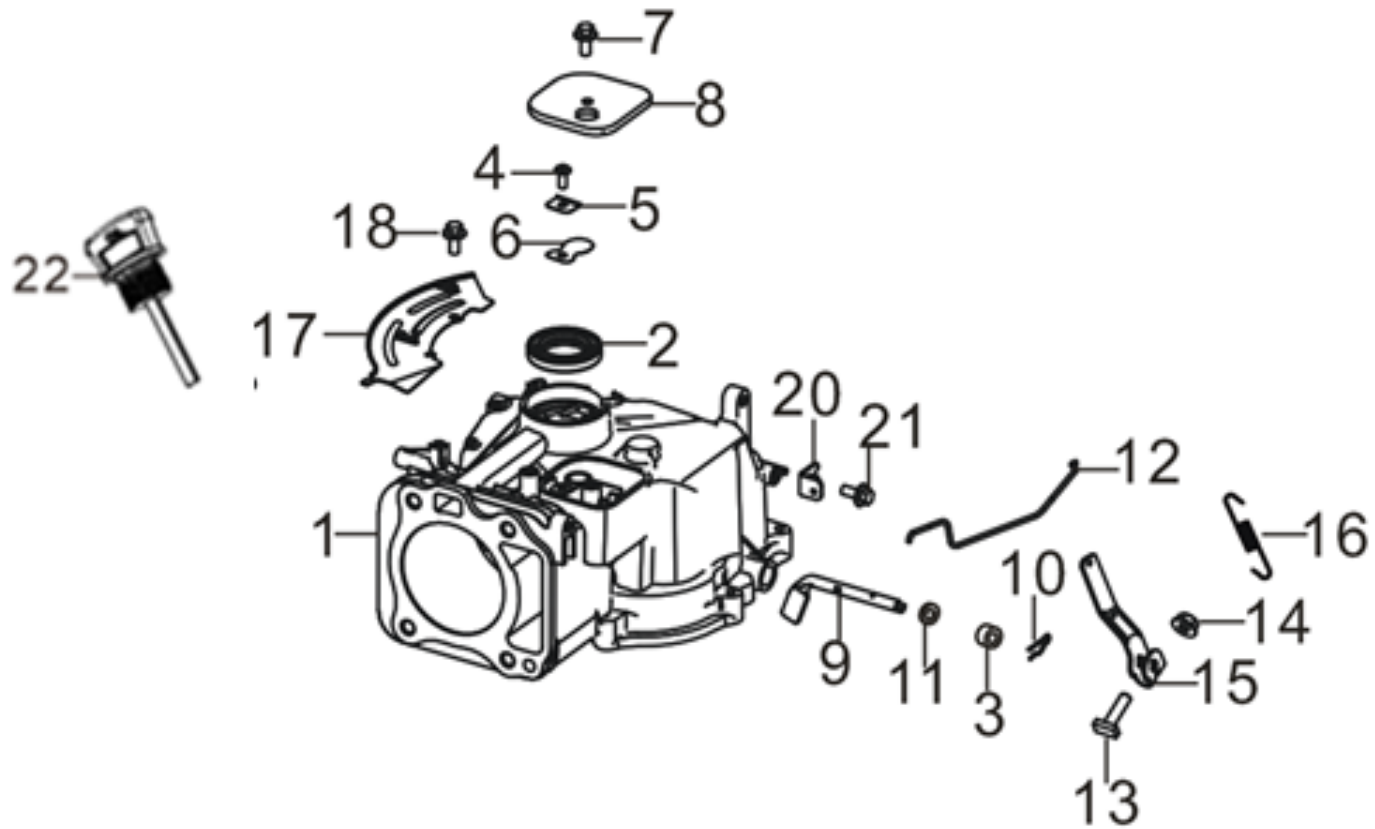
AM-LM-21SP-170P



## TECHNCIAL SPECIFICATIONS

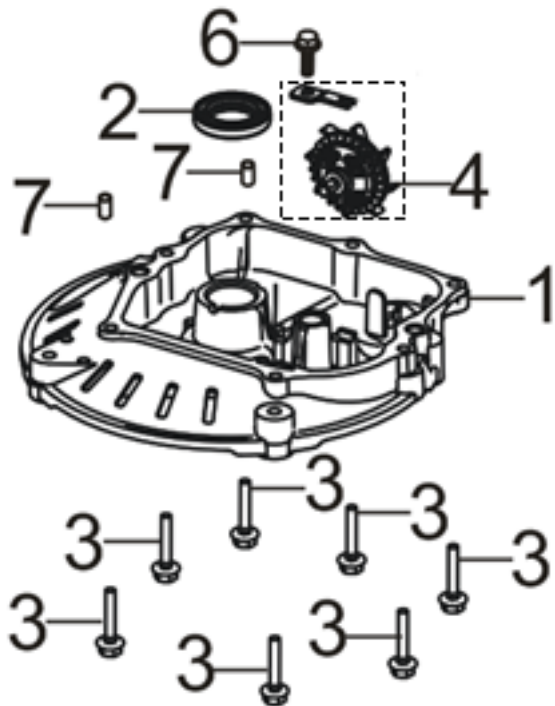
MODEL	AM-LM-18SP-170P	AM-LM-21SP-170P
Cutting Width	46cm (18")	53cm (21")
Displacement	170 cc	170 cc
Bagg Size	60 L	60L
Cutting Height	"25-75 cm 1""-3""	"30-95 cm 1.2""-3.75""
Height Adjustment	Central adjustment	Central adjustment
Front Wheel Size	20 mm(8")	20 mm(8")
Rear Wheel Size	25 mm(10")	25 mm (10")
Driving System	Rear wheel drive	Rear wheel drive

# CRANKCASE. / GEAR ASSY, GOVERNOR - A



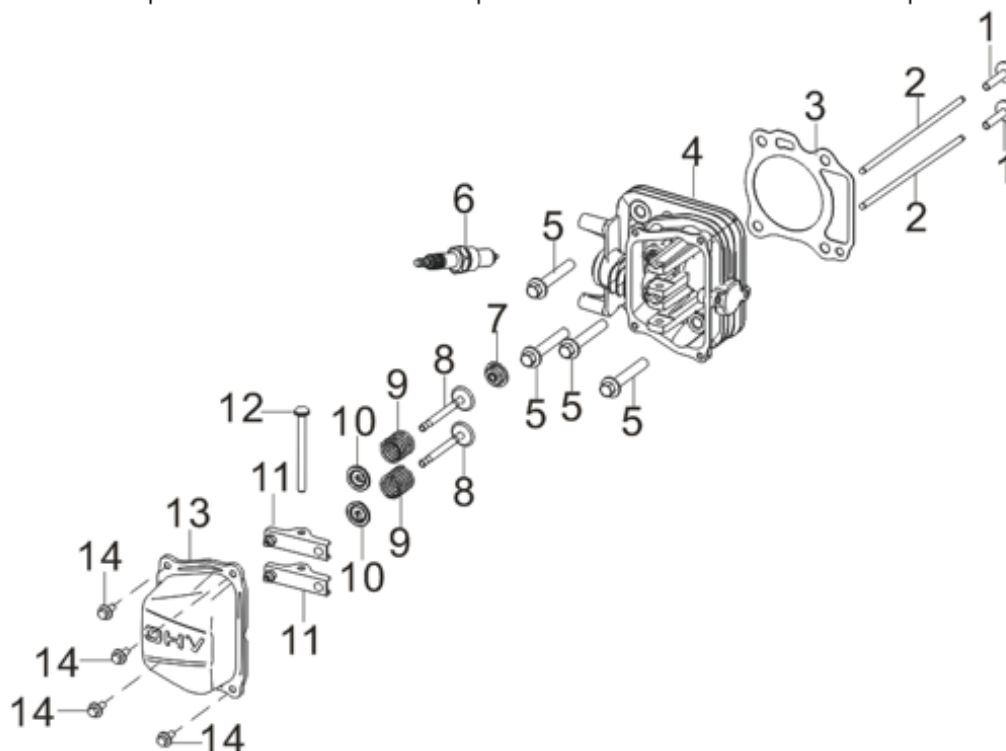
SL NO	PART NO	DESCRIPTION	SL NO	PART NO	DESCRIPTION
1	AM-LM-18/21SP-EA01	CRANKCASE SUBASSEMBLY	12	AM-LM-18/21SP-EA12	GOVERNEOR ROD
2	AM-LM-18/21SP-EA02	OIL SEAL	13	AM-LM-18/21SP-EA13	BOLT
3	AM-LM-18/21SP-EA03	OIL SEAL	14	AM-LM-18/21SP-EA14	NUT
4	AM-LM-18/21SP-EA04	SCREW	15	AM-LM-18/21SP-EA15	GOVERNOR BRACKET
5	AM-LM-18/21SP-EA05	BREATH SHEET	16	AM-LM-18/21SP-EA16	SPRING, GOVERNOR
6	AM-LM-18/21SP-EA06	BREATH SHEET STOP PLATE	17	AM-LM-18/21SP-EA17	BODY LEFT SHIELD
7	AM-LM-18/21SP-EA07	BOLT	18	AM-LM-18/21SP-EA18	BOLT
8	AM-LM-18/21SP-EA08	BREATH GROOVE COVER PLATE	19	AM-LM-18/21SP-EA19	NA
9	AM-LM-18/21SP-EA09	GOVERNOR ARM	20	AM-LM-18/21SP-EA20	THROTILE OPERATING BOTTOM PLATE
10	AM-LM-18/21SP-EA10	COTTER PIN	21	AM-LM-18/21SP-EA21	BOLT
11	AM-LM-18/21SP-EA11	FLAT WASHER	22	AM-LM-18/21SP-EA22	DIPSTICK, OIL

# COVER SUBASSEMBLY, CRANKCASE -B



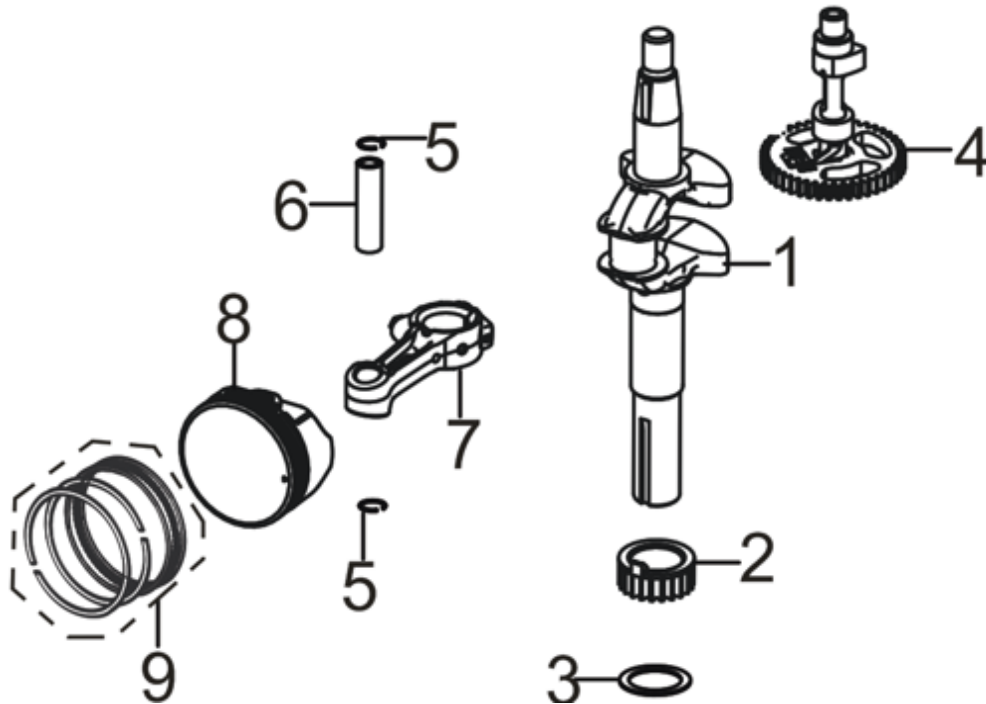
SL NO	PART NO	DESCRIPTION
1	AM-LM-18/21SP-EB01	CRANKCASE COVER
2	AM-LM-18/21SP-EB02	OIL SEAL
3	AM-LM-18/21SP-EB03	BOLT
4	AM-LM-18/21SP-EB04	GOVERNOR GEAR ASSY
5	AM-LM-18/21SP-EB05	NA
6	AM-LM-18/21SP-EB06	BOLT
7	AM-LM-18/21SP-EB07	POSITION PIN

# HEAD SUBASSEMBLY, CYLINDER / SPARK PLUG - C



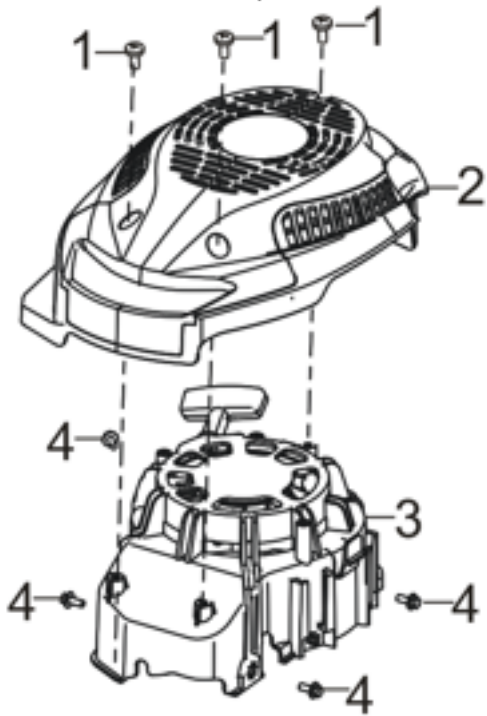
SL NO	PART NO	DESCRIPTION	SL NO	PART NO	DESCRIPTION
1	AM-LM-18/21SP-EC01	TAPPET VALVE	8	AM-LM-18/21SP-EC08	VALVES SET
2	AM-LM-18/21SP-EC02	VALVE LIFTER	9	AM-LM-18/21SP-EC09	VALVE SPRING
3	AM-LM-18/21SP-EC03	CYLINDER HEAD GASKET	10	AM-LM-18/21SP-EC10	VALVE SPRING SEAT
4	AM-LM-18/21SP-EC04	CYLINDER HEAD SUBASSEMBLY	11	AM-LM-18/21SP-EC11	VALVE ROCKER SUBASSEMBLY
5	AM-LM-18/21SP-EC05	BOLT	12	AM-LM-18/21SP-EC12	VALVE ROCKER SHAFT
6	AM-LM-18/21SP-EC06	SPARK PLUG	13	AM-LM-18/21SP-EC13	CYLINDER HEAD COVER
7	AM-LM-18/21SP-EC07	SEAL GUIDE	14	AM-LM-18/21SP-EC14	BOLT

# CRANKSHAFT CONNETING ROD - D



SL NO	PART NO	DESCRIPTION
1	AM-LM-18/21SP-ED01	CRANKSHAFT ASSY
2	AM-LM-18/21SP-ED02	GEAR, TIMING DRIVE
3	AM-LM-18/21SP-ED03	FLAT WASHER
4	AM-LM-18/21SP-ED04	CAMSHAFT ASSY.
5	AM-LM-18/21SP-ED05	PISTON PIN CLIP
6	AM-LM-18/21SP-ED06	PISTON PIN
7	AM-LM-18/21SP-ED07	CONNECTING ROD
8	AM-LM-18/21SP-ED08	PISTON
9	AM-LM-18/21SP-ED09	PISTON RING ASSY

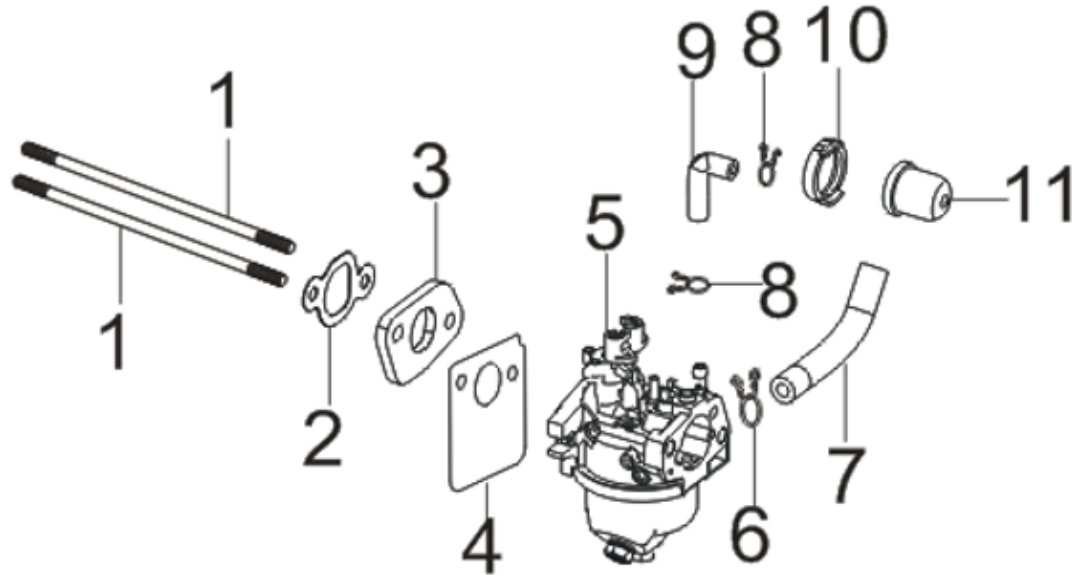
# RECOIL STARTER - E



SL NO	PART NO	DESCRIPTION
1	AM-LM-18/21SP-EE01	SELF-TAPPING SCREW
2	AM-LM-18/21SP-EE02	ENGINE HOUSING
3	AM-LM-18/21SP-EE03	RECOIL STARTER ASSY
4	AM-LM-18/21SP-EE04	BOLT

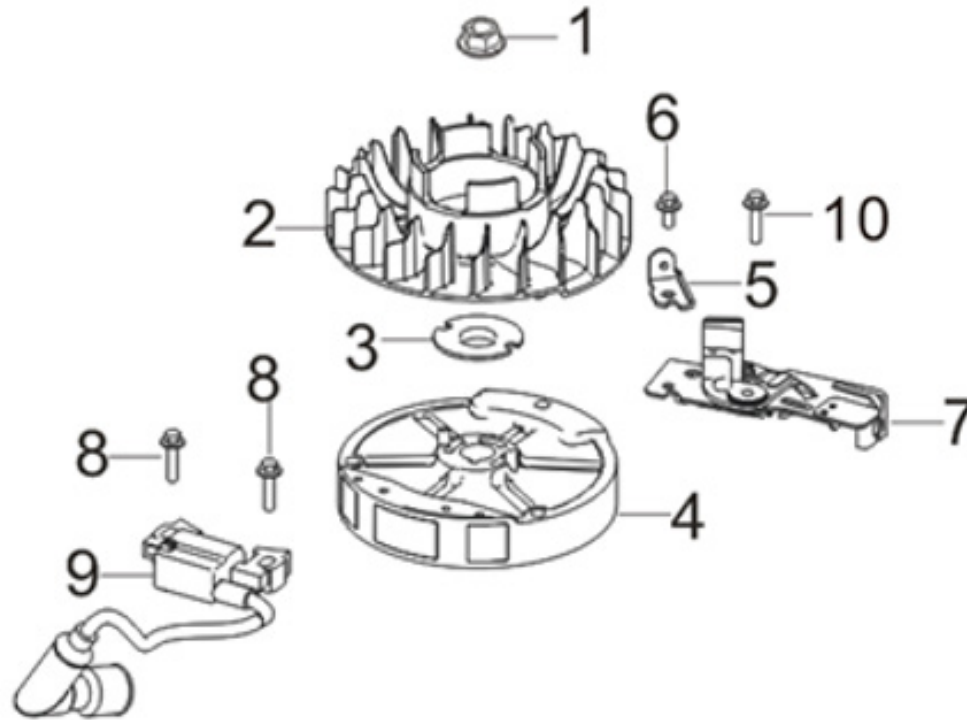


# CARBURETOR ASSY - F



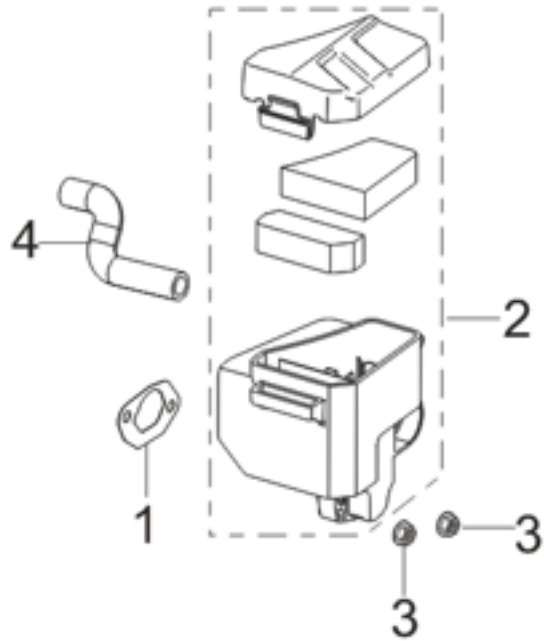
SL NO	PART NO	DESCRIPTION	SL NO	PART NO	DESCRIPTION
1	AM-LM-18/21SP-EF01	STUD BOLT	7	AM-LM-18/21SP-EF07	FUEL TUBE
2	AM-LM-18/21SP-EF02	INLET GASKET	8	AM-LM-18/21SP-EF08	PIPE CLAMP
3	AM-LM-18/21SP-EF03	CARBURETOR INSULATOR PLATE	9	AM-LM-18/21SP-EF09	STARTING RICHED VALVE TUBE
4	AM-LM-18/21SP-EF04	INSULATOR PLATE GASKET	10	AM-LM-18/21SP-EF10	STARTING RICHED VALVE SEAT
5	AM-LM-18/21SP-EF05	CARBURETOR ASSY	11	AM-LM-18/21SP-EF11	STARTING RICHED VALVE BODY
6	AM-LM-18/21SP-EF06	PIPE CLAMP			

# FLYWHEEL / IMPELLER / STARTER PULLEY / IGNITION COIL - G



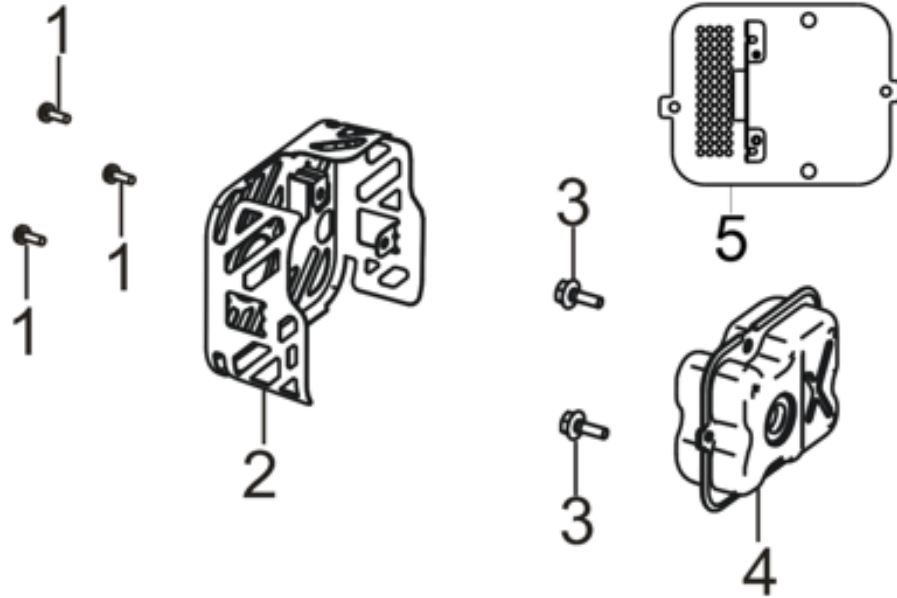
SL NO	PART NO	DESCRIPTION	SL NO	PART NO	DESCRIPTION
1	AM-LM-18/21SP-EG01	FLYWHEEL NUT	6	AM-LM-18/21SP-EG06	BOLT
2	AM-LM-18/21SP-EG02	IMPELLER	7	AM-LM-18/21SP-EG07	BRAKE ASSY
3	AM-LM-18/21SP-EG03	STARTER CUP SEAT	8	AM-LM-18/21SP-EG08	BOLT
4	AM-LM-18/21SP-EG04	FLYWHEEL SUBASSEMBLY	9	AM-LM-18/21SP-EG09	IGNITION COIL
5	AM-LM-18/21SP-EG05	SHROUD LUG	10	AM-LM-18/21SP-EG10	BOLT

# AIR CLEANER - H



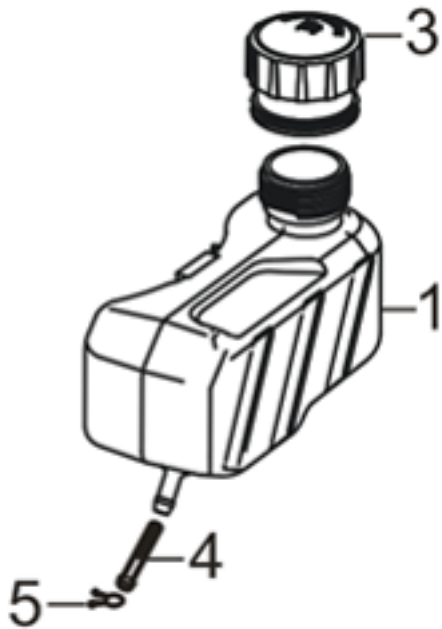
SL NO	PART NO	DESCRIPTION
1	AM-LM-18/21SP-EH01	AIR CLEANER SEAL GASKET
2	AM-LM-18/21SP-EH02	AIR CLEANER
3	AM-LM-18/21SP-EH03	HEXAGON NUT WITH FLANGE
4	AM-LM-18/21SP-EH04	BREATHER TUBE

# MUFFLER ASSY - J



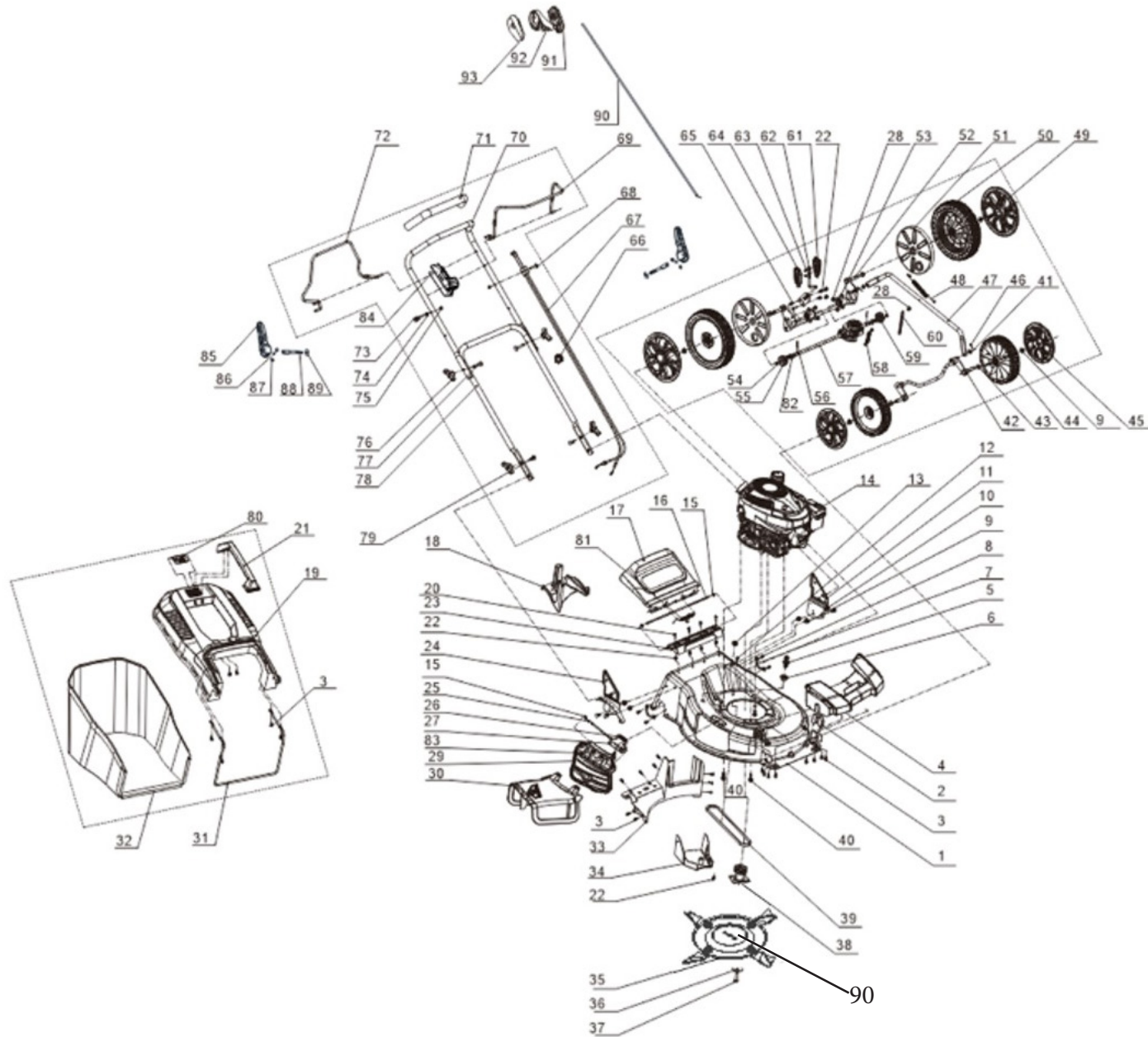
SL NO	PART NO	DESCRIPTION
1	AM-LM-18/21SP-EJ01	SELF-TAPPING SCREW
2	AM-LM-18/21SP-EJ02	MUFFLER OUTER COVER
3	AM-LM-18/21SP-EJ03	BOLT
4	AM-LM-18/21SP-EJ04	MUFFLER ASSY
5	AM-LM-18/21SP-EJ05	MUFFLER INSULATOR PLATE

# FUEL TANK ASSY - K



SL NO	PART NO	DESCRIPTION
1	AM-LM-18/21SP-EK01	FUEL TANK ASSY
2	AM-LM-18/21SP-EK02	FUEL TANK COVER
3	AM-LM-18/21SP-EK03	FUEL STRAINER
4	AM-LM-18/21SP-EK04	PIPE CLAMP

# TRANSMISSION PART DIAGRAM



SL NO	PART NO.	DESCRIPTION	SL NO.	PART NO.	DESCRIPTION
1	AM-LM-18/21SP-T01	Deck	17	AM-LM-18/21SP-T17	Rear Deflector
2	AM-LM-18/21SP-T02	Front Axle Plank	18	AM-LM-18/21SP-T18	Rear Mulching Plug
3	AM-LM-18/21SP-T03	Screw	19	AM-LM-18/21SP-T19	Straw Box Upper Cover
4	AM-LM-18/21SP-T04	Hood	20	AM-LM-18/21SP-T20	Cross-Recessed Pan Head Screw
5	AM-LM-18/21SP-T05	Washing Nozzle	21	AM-LM-18/21SP-T21	Straw Box Handle
6	AM-LM-18/21SP-T06	Nut, Flywheel	22	AM-LM-18/21SP-T22	Hexagon Lock Nut With Flange
7	AM-LM-18/21SP-T07	Rear Axle Plank	23	AM-LM-18/21SP-T23	Fender Black
8	AM-LM-18/21SP-T08	Screw	24	AM-LM-18/21SP-T24	Right Handle Support
9	AM-LM-18/21SP-T09	Hexagon Nut	25	AM-LM-18/21SP-T25	Side Deflector Pole
10	AM-LM-18/21SP-T10	Bolts	26	AM-LM-18/21SP-T26	Side Deflector Spring
11	AM-LM-18/21SP-T11	Left Handle Support	27	AM-LM-18/21SP-T27	Side Discharge Spport
12	AM-LM-18/21SP-T12	Bolts	28	AM-LM-18/21SP-T28	Flange Nut
13	AM-LM-18/21SP-T13	Cable Sheath	29	AM-LM-18/21SP-T29	Side Deflector
14	AM-LM-18/21SP-T14	Engine	30	AM-LM-18/21SP-T30	Side Discharge
15	AM-LM-18/21SP-T15	Split Washer	31	AM-LM-18/21SP-T31	Straw Box Support
16	AM-LM-18/21SP-T16	Rear Deflector Plank	32	AM-LM-18/21SP-T32	Straw Box Lower Bag

SL NO	PART NO.	DESCRIPTION	SL NO.	PART NO.	DESCRIPTION
33	AM-LM-18/21SP-T33	Rear Air Path	49	AM-LM-18/21SP-T49	Wheel Cover
34	AM-LM-18/21SP-T34	Belt Cover	50	AM-LM-18/21SP-T50	Wheel, Transportation
35	AM-LM-18/21SP-T35	Blade	51	AM-LM-18/21SP-T51	Dust Wheel Cover
36	AM-LM-18/21SP-T36	Disc Washer	52	AM-LM-18/21SP-T52	Shaft Rear Wheel
37	AM-LM-18/21SP-T37	Flange Bolt	53	AM-LM-18/21SP-T53	Shaft Sleeve
38	AM-LM-18/21SP-T38	Blade Adapter	54	AM-LM-18/21SP-T54	Circlip For Shaft - Type A
39	AM-LM-18/21SP-T39	V Adapter	55	AM-LM-18/21SP-T55	Gear Pinion
40	AM-LM-18/21SP-T40	Bolt	56	AM-LM-18/21SP-T56	Gear Pinion Pin
41	AM-LM-18/21SP-T41	Flat Washer - Grade A	57	AM-LM-18/21SP-T57	Retarder Part
42	AM-LM-18/21SP-T42	Shaft, Front Wheel	58	AM-LM-18/21SP-T58	Extension Spring
43	AM-LM-18/21SP-T43	Wave Elastic Washer	59	AM-LM-18/21SP-T59	Gear Pinion
44	AM-LM-18/21SP-T44	Push Wheel	60	AM-LM-18/21SP-T60	Wire Clip
45	AM-LM-18/21SP-T45	Wheel Cover	61	AM-LM-18/21SP-T61	Cutting Height Lever Sleeve
46	AM-LM-18/21SP-T46	Cotter Pin	62	AM-LM-18/21SP-T62	Cutting Height Lever
47	AM-LM-18/21SP-T47	Cutting Height Lever	63	AM-LM-18/21SP-T63	Screw
48	AM-LM-18/21SP-T48	Cutting Height Spring	64	AM-LM-18/21SP-T64	Cutting Height Lever Sleeve



SL NO	PART NO.	DESCRIPTION	SL NO.	PART NO.	DESCRIPTION
65	AM-LM-18/21SP-T65	Hexagonal Head Bolt - Full Thread	81	AM-LM-18/21SP-T81	Rear Deflector Spring
66	AM-LM-18/21SP-T66	Wire Clip	82	AM-LM-18/21SP-T82	Flat Washer
67	AM-LM-18/21SP-T67	Brake Cable	83	AM-LM-18/21SP-T83	Flange bolt
68	AM-LM-18/21SP-T68	Cross Recessed Shaped Bolts	84	AM-LM-18/21SP-T84	Limit sleeve
69	AM-LM-18/21SP-T69	Brake Lever	85	AM-LM-18/21SP-T85	Lock Handle
70	AM-LM-18/21SP-T70	Upper Handle	86	AM-LM-18/21SP-T86	Pin Shaft
71	AM-LM-18/21SP-T71	Sleeve, Handle Rubber	87	AM-LM-18/21SP-T87	Split Washer
72	AM-LM-18/21SP-T72	Drive Lever	88	AM-LM-18/21SP-T88	Locking Bolt
73	AM-LM-18/21SP-T73	Bent Rope Bolt	89	AM-LM-18/21SP-T89	Flat Washer
74	AM-LM-18/21SP-T74	Hexagon Nut With Flange	90	AM-LM-18/21SP-T90	Disc
75	AM-LM-18/21SP-T75	Acorn Hexagon Nuts			
76	AM-LM-18/21SP-T76	Fast Screw			
77	AM-LM-18/21SP-T77	Locking Bolt			
78	AM-LM-18/21SP-T78	Inferior Handle			
79	AM-LM-18/21SP-T79	Half Round Head Square Neck Bolt			
80	AM-LM-18/21SP-T80	Straw Box Indicating Door			

## INSPECTION & MAINTAINANCE

For safety use, make sure the machine is cleaned every three months. Before working, make sure to inspect the filter and the nozzle and ensure there is no impurity. After working, make sure there is no water in the pump and the hose.

If the machine needs to be repaired in the guarantee period, please return the machine to the shop. You need to provide the certificate of purchase on order to repair or get the substitute.

Before packing, the machine should be cleaned, then use closed packaging, packaging should be firm. Store the machine in dry place.

For transportation safety. The machine should comply with ISTA.

Do not dispose of electrical machines as unsorted municipal waste, use separate collection facilities.

If electrical machines are disposed of in landfills or dumps, hazardous substances can leak into the ground water and get into the food chain, damaging your health and well being.

When replacing old machines with new ones, the retailer is legally obligated to take back your old machine for disposals at least free of charge.

# WARRANTY CARD

## CUSTOMER COPY

DATE _____	DATE OF DELIVERY _____	DEALERS OFFICIAL SEAL _____	DEALERS SIGN _____
PURCHASERS NAME & ADDRESS _____ _____	CUSTOMER SIGN _____		
PRODUCT NAME _____	PRODUCT SERIAL NO. _____	INVOICE/DN NO. _____	
I/Will accept the terms and conditions of warranty as in the warranty card			

## DEALERS COPY

DATE _____	DATE OF DELIVERY _____	DEALERS OFFICIAL SEAL _____	DEALERS SIGN _____
PURCHASERS NAME & ADDRESS _____ _____	CUSTOMER SIGN _____		
PRODUCT NAME _____	PRODUCT SERIAL NO. _____	INVOICE/DN NO. _____	
I/Will accept the terms and conditions of warranty as in the warranty card			

## COMPANY COPY

DATE _____	DATE OF DELIVERY _____	DEALERS OFFICIAL SEAL _____	DEALERS SIGN _____
PURCHASERS NAME & ADDRESS _____ _____	CUSTOMER SIGN _____		
PRODUCT NAME _____	PRODUCT SERIAL NO. _____	INVOICE/DN NO. _____	
I/Will accept the terms and conditions of warranty as in the warranty card			

1. LIMITED WARRANTY PERIOD : For a period of six months from the date of Sale / delivery of the product which ever is earlier. 2. LIMITED WARRANTY OBLIGATION : Replacement of defective part(s) by authorized dealer are free of charges. If found defective by reasons of defective material / poor workmanship, parts will be replaced and there will be no value re-imburement. 3. TERMS & CONDITIONS : a. Claims under warranty will be accepted on submission of Warranty Card duly filled and stamped by authorized dealer together with the original purchase document. : b. Shipping / transportation / Incidental charges incurred in replacing defective parts under warranty shall be borne by the purchaser

WARRANTY null & void if

- (i) Lack of maintenance, (ii) Incorrect use of the machine or tampering, (iii) Use of non-genuine spare parts, (iv) Usage of acids, solvents, or any flammable materials, (v) Non-usage of filter water / clear water / soft water & using water above 40°C temperature, (vi) While using the pressure washers to draw water which is contaminated with dust & solvents (eg. paint thinners, gasoline, oil, etc.), (vii) Repair done by unauthorized service people, (viii) Those parts subject to wear & tear due to normal operations and plastic parts, rubber items etc, (ix) Loose connections, faulty electrical fixtures & fluctuations in power supply.
- 4. Should any failure occur during or after the warranty period, customer does not have the right to interrupt payment / price discount.
- 5. Incidental or consequential damages like inconvenience commercial loss, loss of tie, mental agony etc.
- 6. Loss of any nature due to operation or non-operation is not covered under warranty.
- 7. All free service are at Dealer's service point only.
- 8. Warranty ceases if service is not done periodically.
- 9. The attached card should be completed and returned to Ratnagiri Impex Pvt. Ltd. for registration immediately after sale / delivery.
- 10. The warranty is void unless you register the warranty card with Ratnagiri Impex Pvt. Ltd.
- 11. The decision of Ratnagiri Impex Pvt. Ltd., in settling the warranty is final in all respects.
- 12. All disputes are subject to Bangalore Courts Jurisdiction

1. LIMITED WARRANTY PERIOD : For a period of six months from the date of Sale / delivery of the product which ever is earlier. 2. LIMITED WARRANTY OBLIGATION : Replacement of defective part(s) by authorized dealer are free of charges. If found defective by reasons of defective material / poor workmanship, parts will be replaced and there will be no value re-imburement. 3. TERMS & CONDITIONS : a. Claims under warranty will be accepted on submission of Warranty Card duly filled and stamped by authorized dealer together with the original purchase document. : b. Shipping / transportation / Incidental charges incurred in replacing defective parts under warranty shall be borne by the purchaser.

WARRANTY null & void if

- (i) Lack of maintenance, (ii) Incorrect use of the machine or tampering, (iii) Use of non-genuine spare parts, (iv) Usage of acids, solvents, or any flammable materials, (v) Non-usage of filter water / clear water / soft water & using water above 40°C temperature, (vi) While using the pressure washers to draw water which is contaminated with dust & solvents (eg. paint thinners, gasoline, oil, etc.), (vii) Repair done by unauthorized service people, (viii) Those parts subject to wear & tear due to normal operations and plastic parts, rubber items etc, (ix) Loose connections, faulty electrical fixtures & fluctuations in power supply.
- 4. Should any failure occur during or after the warranty period, customer does not have the right to interrupt payment / price discount.
- 5. Incidental or consequential damages like inconvenience commercial loss, loss of tie, mental agony etc.
- 6. Loss of any nature due to operation or non-operation is not covered under warranty.
- 7. All free service are at Dealer's service point only.
- 8. Warranty ceases if service is not done periodically.
- 9. The attached card should be completed and returned to Ratnagiri Impex Pvt. Ltd. for registration immediately after sale / delivery.
- 10. The warranty is void unless you register the warranty card with Ratnagiri Impex Pvt. Ltd.
- 11. The decision of Ratnagiri Impex Pvt. Ltd., in settling the warranty is final in all respects.
- 12. All disputes are subject to Bangalore Courts Jurisdiction

1. LIMITED WARRANTY PERIOD : For a period of six months from the date of Sale / delivery of the product which ever is earlier. 2. LIMITED WARRANTY OBLIGATION : Replacement of defective part(s) by authorized dealer are free of charges. If found defective by reasons of defective material / poor workmanship, parts will be replaced and there will be no value re-imburement. 3. TERMS & CONDITIONS : a. Claims under warranty will be accepted on submission of Warranty Card duly filled and stamped by authorized dealer together with the original purchase document. : b. Shipping / transportation / Incidental charges incurred in replacing defective parts under warranty shall be borne by the purchaser.

WARRANTY null & void if

- (i) Lack of maintenance, (ii) Incorrect use of the machine or tampering, (iii) Use of non-genuine spare parts, (iv) Usage of acids, solvents, or any flammable materials, (v) Non-usage of filter water / clear water / soft water & using water above 40°C temperature, (vi) While using the pressure washers to draw water which is contaminated with dust & solvents (eg. paint thinners, gasoline, oil, etc.), (vii) Repair done by unauthorized service people, (viii) Those parts subject to wear & tear due to normal operations and plastic parts, rubber items etc, (ix) Loose connections, faulty electrical fixtures & fluctuations in power supply.
- 4. Should any failure occur during or after the warranty period, customer does not have the right to interrupt payment / price discount.
- 5. Incidental or consequential damages like inconvenience commercial loss, loss of tie, mental agony etc.
- 6. Loss of any nature due to operation or non-operation is not covered under warranty.
- 7. All free service are at Dealer's service point only.
- 8. Warranty ceases if service is not done periodically.
- 9. The attached card should be completed and returned to Ratnagiri Impex Pvt. Ltd. for registration immediately after sale / delivery.
- 10. The warranty is void unless you register the warranty card with Ratnagiri Impex Pvt. Ltd.
- 11. The decision of Ratnagiri Impex Pvt. Ltd., in settling the warranty is final in all respects.
- 12. All disputes are subject to Bangalore Courts Jurisdiction



**FREE SERVICE COUPON (30DAYS/30HRS. WHICHEVER IS EARLIER)**

MODEL

SERIAL NUMBER

PDI DATE

SERVICE NO.

PURCHASE BILL NO.

DATE

DEALERS OFFICE SEAL

- 1. Check and test the fuel mixture
- 3. Check , clean and adjust the spark plug
- 5. Check and sparken the cutting tools
- 7. Start and check the noise, vibration, loosen etc..

OPERATIONS

- 2. check and clean the air filter
- 4. Check and adjust the carburetor tuning
- 6. Product familirisation on usage
- 8. Routine maintenance and shortage.

**FREE SERVICE COUPON (30DAYS/30HRS. WHICHEVER IS EARLIER)**

MODEL

SERIAL NUMBER

PDI DATE

SERVICE NO.

PURCHASE BILL NO.

DATE

DEALERS OFFICE SEAL

- 1. Check and test the fuel mixture
- 3. Check , clean and adjust the spark plug
- 5. Check and sparken the cutting tools
- 7. Start and check the noise, vibration, loosen etc..

OPERATIONS

- 2. check and clean the air filter
- 4. Check and adjust the carburetor tuning
- 6. Product familirisation on usage
- 8. Routine maintenance and shortage.

**FREE SERVICE COUPON (30DAYS/30HRS. WHICHEVER IS EARLIER)**

MODEL

SERIAL NUMBER

PDI DATE

SERVICE NO.

PURCHASE BILL NO.

DATE

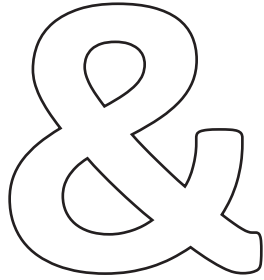
DEALERS OFFICE SEAL

- 1. Check and test the fuel mixture
- 3. Check , clean and adjust the spark plug
- 5. Check and sparken the cutting tools
- 7. Start and check the noise, vibration, loosen etc..

OPERATIONS

- 2. check and clean the air filter
- 4. Check and adjust the carburetor tuning
- 6. Product familirisation on usage
- 8. Routine maintenance and shortage.

# DOS

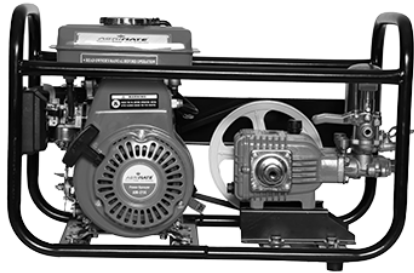
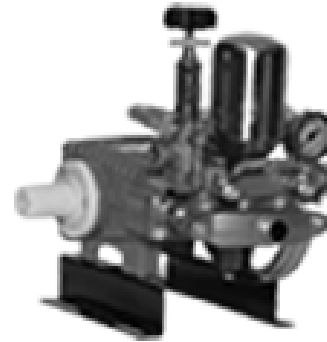


# DONT'S

1. Always read the instruction manual supplied along with the equipments and understand the correct installation and operating procedures before attempting to use the equipments.
2. It is important to use the personal protection equipments such as head helmet with visor, ear defenders, goggles, safety gloves, cut resistant shoes, trousers and jackets while operating potentially dangerous machines
3. Avoid untrained persons using the equipments. Children must not be allowed to handle these equipments
4. Always use genuine spares and accessories in repairs and usage to derive maximum life of the equipments.
5. Always keep the equipments in good working condition to minimize loss of output as well as to reduce the pollution and save the environment
6. Do not use the machine within range of persons unless they wear protective clothing
7. Do not operate the machine when fatigued or under the influence of alcohol or drugs
8. When the machine is running, please maintain a constant water supply. Without water circulation will damage the sealing rings of the machine.
9. For more query kindly contact for our Service Center/Dealer/ franchise

# Agrimate Army For Pest Control

ANY WHERE - ANY TIME - ANY CROP



Marketed by:  
**ratnagiri  
impex**  
BRINGING YOU THE FUTURE... NOW

IMPORTED & MARKETED BY,  
**RATNAGIRI IMPEX PVT., LTD.,**

Annapurna House, #1 / 1G, 7th Cross, New  
Guddadahalli Mysore Road, Bangalore - 560 026

Missed Call : 7393 938 938 Email: [ask@agrimart.in](mailto:ask@agrimart.in)