

AGRIMATE LAWN MOWER - SELF PROPELLED

AM-LM-18SP-170P

AM-LM-21SP-170P



INTRODUCTION

Dear Sir/ Madam,

Thank you for choosing Agrimate product. You are the proud owner of high technology & durable machine. Trust that our Franchisee/Dealer installed the product & installed the product and explained you about the usage & service instructions. Please visit our autorised dealer for your future requirement of our other equipments, genuine spares, accessories and services. Service coupons are attached with this manual and you can avail free service to keep your machine fit always to use on demand.

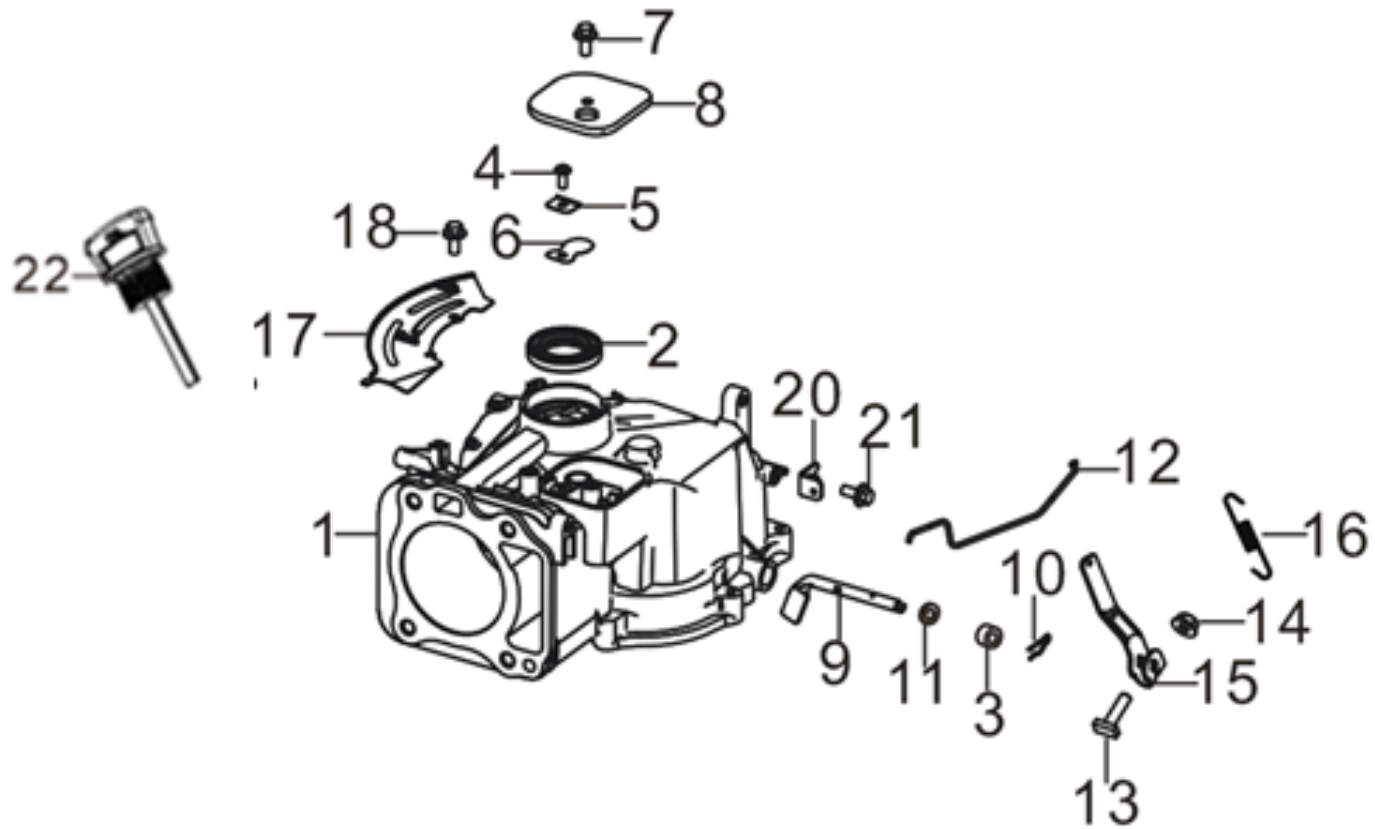
About Ratnagiri,

We import and market of high quality of agriculture wide range of equipments which we are selling through our authorised franchisee or dealer network. We are in this field from past years service the farmer. community. For further details, Please visit our website www.agrimart.in. & Give a missed call to 7393 938 938.

TECHNCIAL SPECIFICATIONS

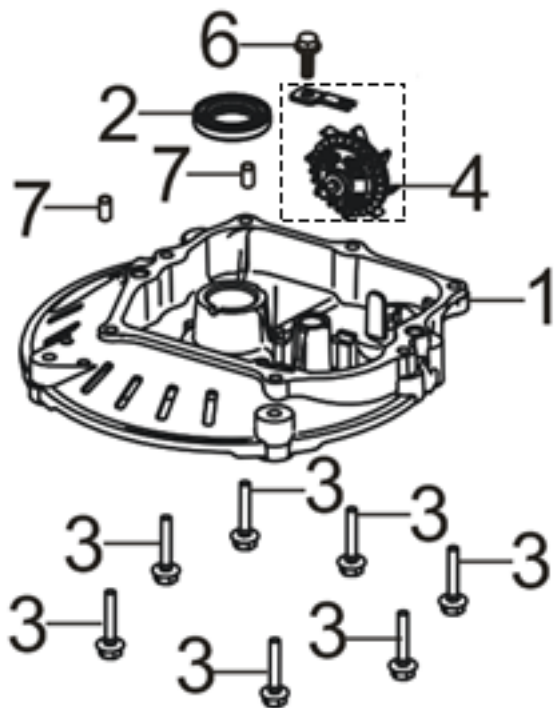
MODEL	AM-LM-18SP-170P	AM-LM-21SP-170P
Cutting Width	46cm (18")	53cm (21")
Displacement	170 cc	170 cc
Bagg Size	60 L	60L
Cutting Height	"25-75 cm 1""-3""	"30-95 cm 1.2""-3.75""
Height Adjustment	Central adjustment	Central adjustment
Front Wheel Size	20 mm(8")	20 mm(8")
Rear Wheel Size	25 mm(10")	25 mm (10")
Driving System	Rear wheel drive	Rear wheel drive

CRANKCASE. / GEAR ASSY, GOVERNOR - A



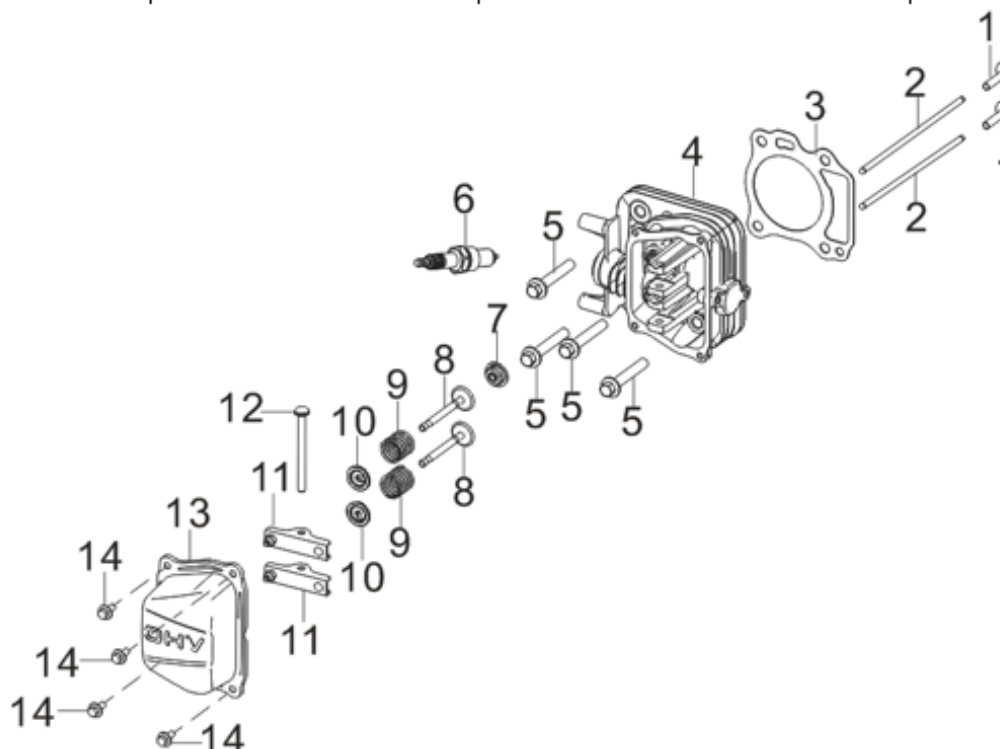
SL NO	PART NO	DESCRIPTION	SL NO	PART NO	DESCRIPTION
1	AM-LM-18/21SP-EA01	CRANKCASE SUBASSEMBLY	12	AM-LM-18/21SP-EA12	GOVERNEOR ROD
2	AM-LM-18/21SP-EA02	OIL SEAL	13	AM-LM-18/21SP-EA13	BOLT
3	AM-LM-18/21SP-EA03	OIL SEAL	14	AM-LM-18/21SP-EA14	NUT
4	AM-LM-18/21SP-EA04	SCREW	15	AM-LM-18/21SP-EA15	GOVERNOR BRACKET
5	AM-LM-18/21SP-EA05	BREATH SHEET	16	AM-LM-18/21SP-EA16	SPRING, GOVERNOR
6	AM-LM-18/21SP-EA06	BREATH SHEET STOP PLATE	17	AM-LM-18/21SP-EA17	BODY LEFT SHIELD
7	AM-LM-18/21SP-EA07	BOLT	18	AM-LM-18/21SP-EA18	BOLT
8	AM-LM-18/21SP-EA08	BREATH GROOVE COVER PLATE	19	AM-LM-18/21SP-EA19	NA
9	AM-LM-18/21SP-EA09	GOVERNOR ARM	20	AM-LM-18/21SP-EA20	THROTILE OPERATING BOTTOM PLATE
10	AM-LM-18/21SP-EA10	COTTER PIN	21	AM-LM-18/21SP-EA21	BOLT
11	AM-LM-18/21SP-EA11	FLAT WASHER	22	AM-LM-18/21SP-EA22	DIPSTICK, OIL

COVER SUBASSEMBLY, CRANKCASE -B



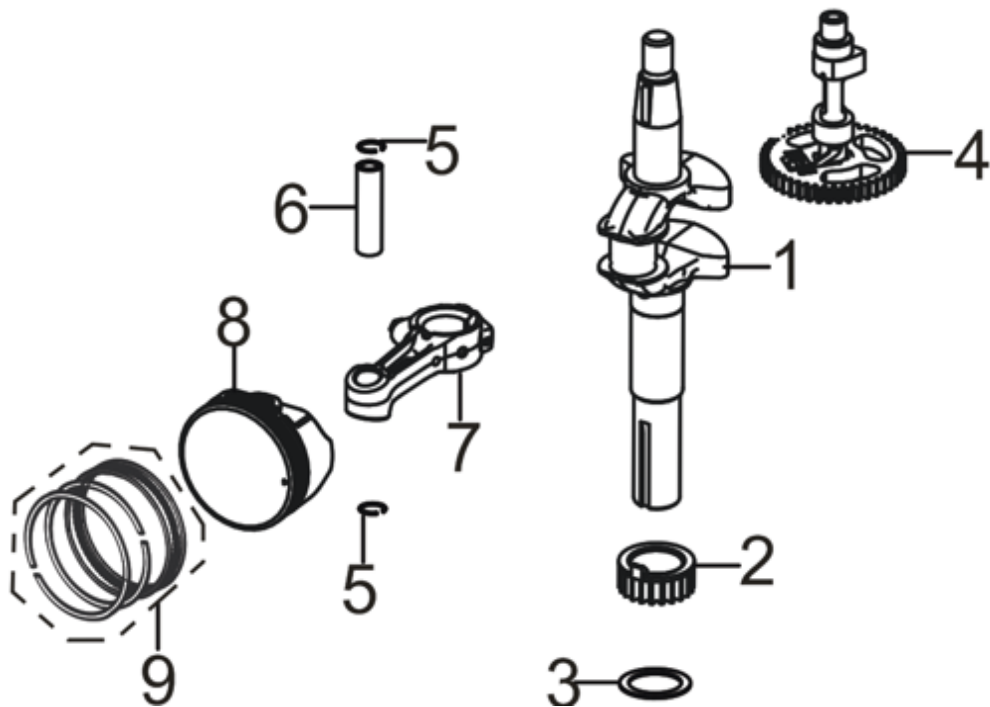
SL NO	PART NO	DESCRIPTION
1	AM-LM-18/21SP-EB01	CRANKCASE COVER
2	AM-LM-18/21SP-EB02	OIL SEAL
3	AM-LM-18/21SP-EB03	BOLT
4	AM-LM-18/21SP-EB04	GOVERNOR GEAR ASSY
5	AM-LM-18/21SP-EB05	NA
6	AM-LM-18/21SP-EB06	BOLT
7	AM-LM-18/21SP-EB07	POSITION PIN

HEAD SUBASSEMBLY, CYLINDER / SPARK PLUG - C



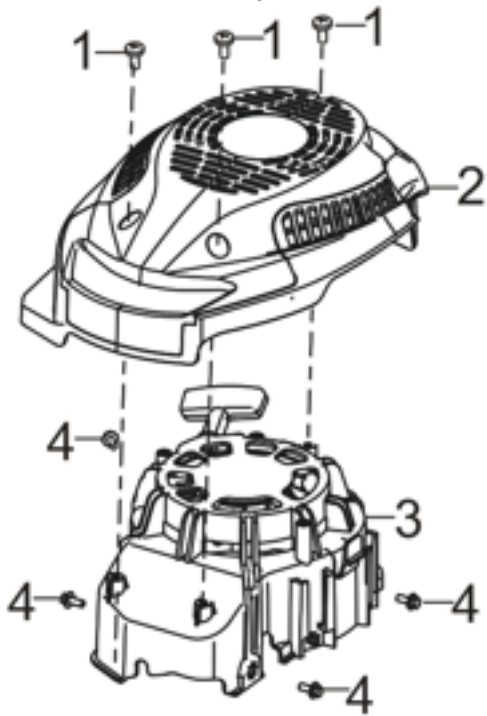
SL NO	PART NO	DESCRIPTION	SL NO	PART NO	DESCRIPTION
1	AM-LM-18/21SP-EC01	TAPPET VALVE	8	AM-LM-18/21SP-EC08	VALVES SET
2	AM-LM-18/21SP-EC02	VALVE LIFTER	9	AM-LM-18/21SP-EC09	VALVE SPRING
3	AM-LM-18/21SP-EC03	CYLINDER HEAD GASKET	10	AM-LM-18/21SP-EC10	VALVE SPRING SEAT
4	AM-LM-18/21SP-EC04	CYLINDER HEAD SUBASSEMBLY	11	AM-LM-18/21SP-EC11	VALVE ROCKER SUBASSEMBLY
5	AM-LM-18/21SP-EC05	BOLT	12	AM-LM-18/21SP-EC12	VALVE ROCKER SHAFT
6	AM-LM-18/21SP-EC06	SPARK PLUG	13	AM-LM-18/21SP-EC13	CYLINDER HEAD COVER
7	AM-LM-18/21SP-EC07	SEAL GUIDE	14	AM-LM-18/21SP-EC14	BOLT

CRANKSHAFT CONNETING ROD - D



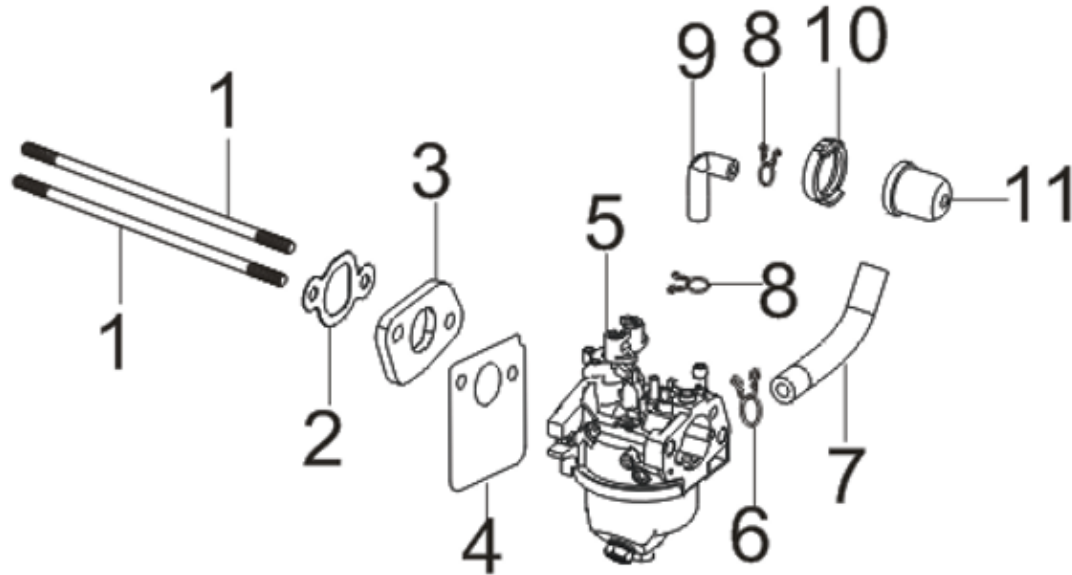
SL NO	PART NO	DESCRIPTION
1	AM-LM-18/21SP-ED01	CRANKSHAFT ASSY
2	AM-LM-18/21SP-ED02	GEAR, TIMING DRIVE
3	AM-LM-18/21SP-ED03	FLAT WASHER
4	AM-LM-18/21SP-ED04	CAMSHAFT ASSY.
5	AM-LM-18/21SP-ED05	PISTON PIN CLIP
6	AM-LM-18/21SP-ED06	PISTON PIN
7	AM-LM-18/21SP-ED07	CONNECTING ROD
8	AM-LM-18/21SP-ED08	PISTON
9	AM-LM-18/21SP-ED09	PISTON RING ASSY

RECOIL STARTER - E



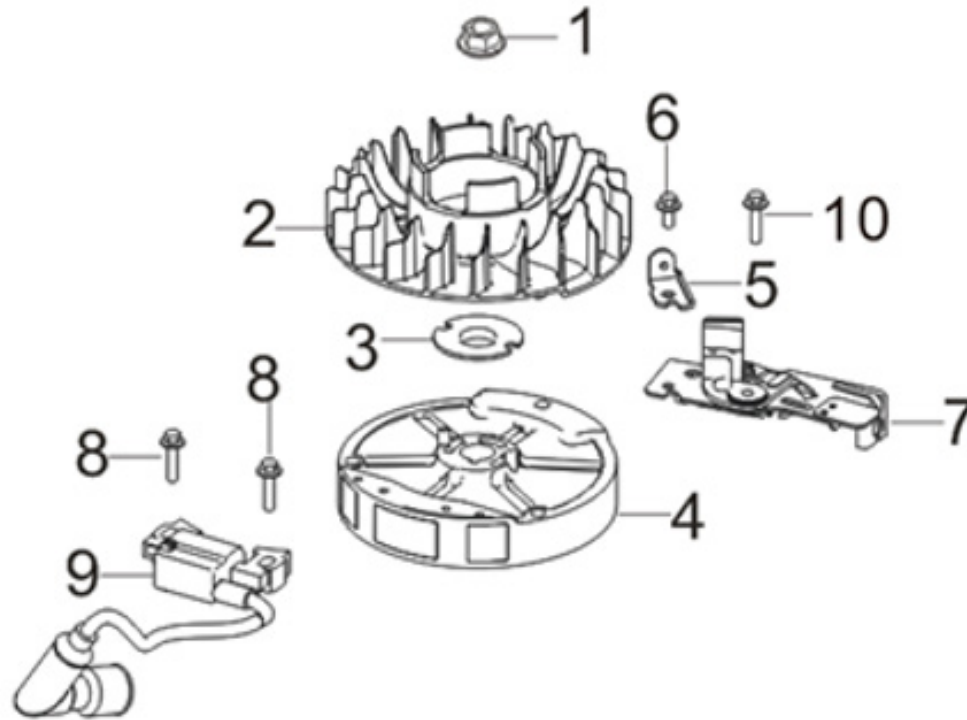
SL NO	PART NO	DESCRIPTION
1	AM-LM-18/21SP-EE01	SELF-TAPPING SCREW
2	AM-LM-18/21SP-EE02	ENGINE HOUSING
3	AM-LM-18/21SP-EE03	RECOIL STARTER ASSY
4	AM-LM-18/21SP-EE04	BOLT

CARBURETOR ASSY - F



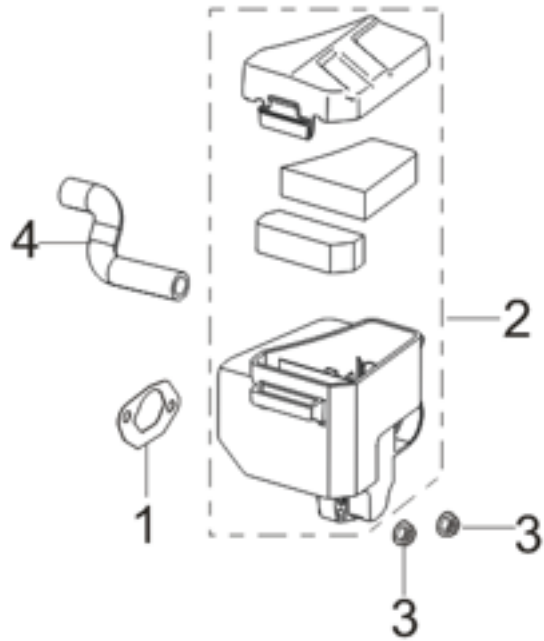
SL NO	PART NO	DESCRIPTION	SL NO	PART NO	DESCRIPTION
1	AM-LM-18/21SP-EF01	STUD BOLT	7	AM-LM-18/21SP-EF07	FUEL TUBE
2	AM-LM-18/21SP-EF02	INLET GASKET	8	AM-LM-18/21SP-EF08	PIPE CLAMP
3	AM-LM-18/21SP-EF03	CARBURETOR INSULATOR PLATE	9	AM-LM-18/21SP-EF09	STARTING RICHED VALVE TUBE
4	AM-LM-18/21SP-EF04	INSULATOR PLATE GASKET	10	AM-LM-18/21SP-EF10	STARTING RICHED VALVE SEAT
5	AM-LM-18/21SP-EF05	CARBURETOR ASSY	11	AM-LM-18/21SP-EF11	STARTING RICHED VALVE BODY
6	AM-LM-18/21SP-EF06	PIPE CLAMP			

FLYWHEEL / IMPELLER / STARTER PULLEY / IGNITION COIL - G



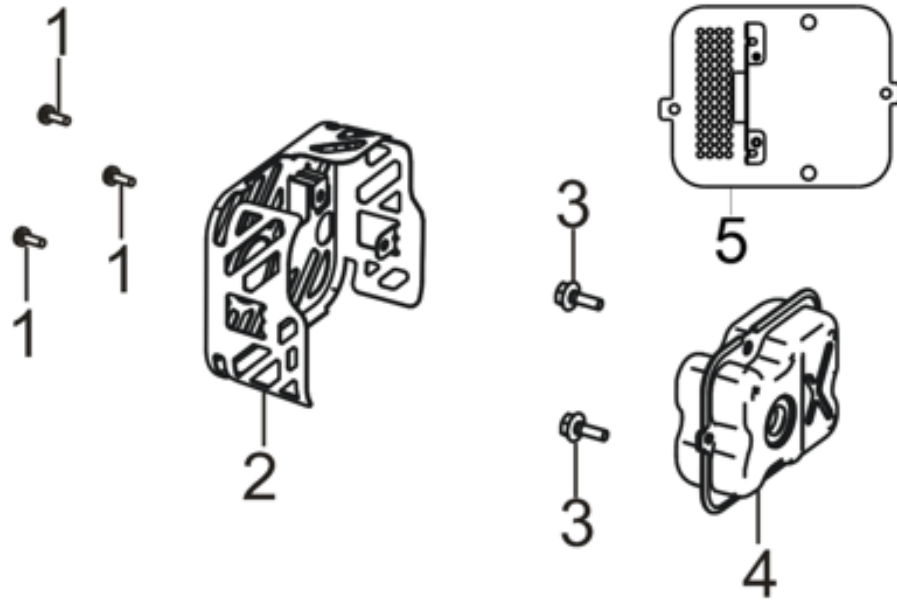
SL NO	PART NO	DESCRIPTION	SL NO	PART NO	DESCRIPTION
1	AM-LM-18/21SP-EG01	FLYWHEEL NUT	6	AM-LM-18/21SP-EG06	BOLT
2	AM-LM-18/21SP-EG02	IMPELLER	7	AM-LM-18/21SP-EG07	BRAKE ASSY
3	AM-LM-18/21SP-EG03	STARTER CUP SEAT	8	AM-LM-18/21SP-EG08	BOLT
4	AM-LM-18/21SP-EG04	FLYWHEEL SUBASSEMBLY	9	AM-LM-18/21SP-EG09	IGNITION COIL
5	AM-LM-18/21SP-EG05	SHROUD LUG	10	AM-LM-18/21SP-EG10	BOLT

AIR CLEANER - H



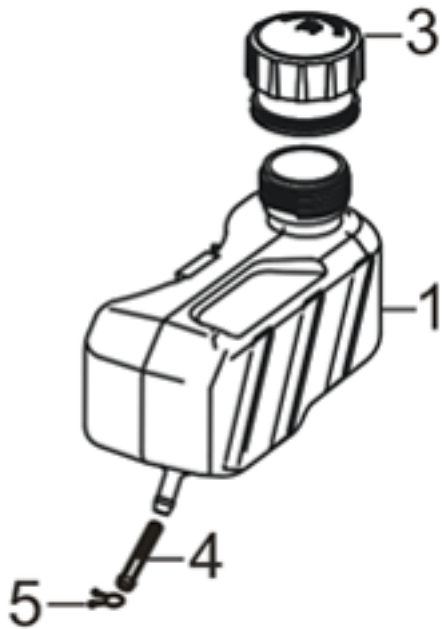
SL NO	PART NO	DESCRIPTION
1	AM-LM-18/21SP-EH01	AIR CLEANER SEAL GASKET
2	AM-LM-18/21SP-EH02	AIR CLEANER
3	AM-LM-18/21SP-EH03	HEXAGON NUT WITH FLANGE
4	AM-LM-18/21SP-EH04	BREATHER TUBE

MUFFLER ASSY - J



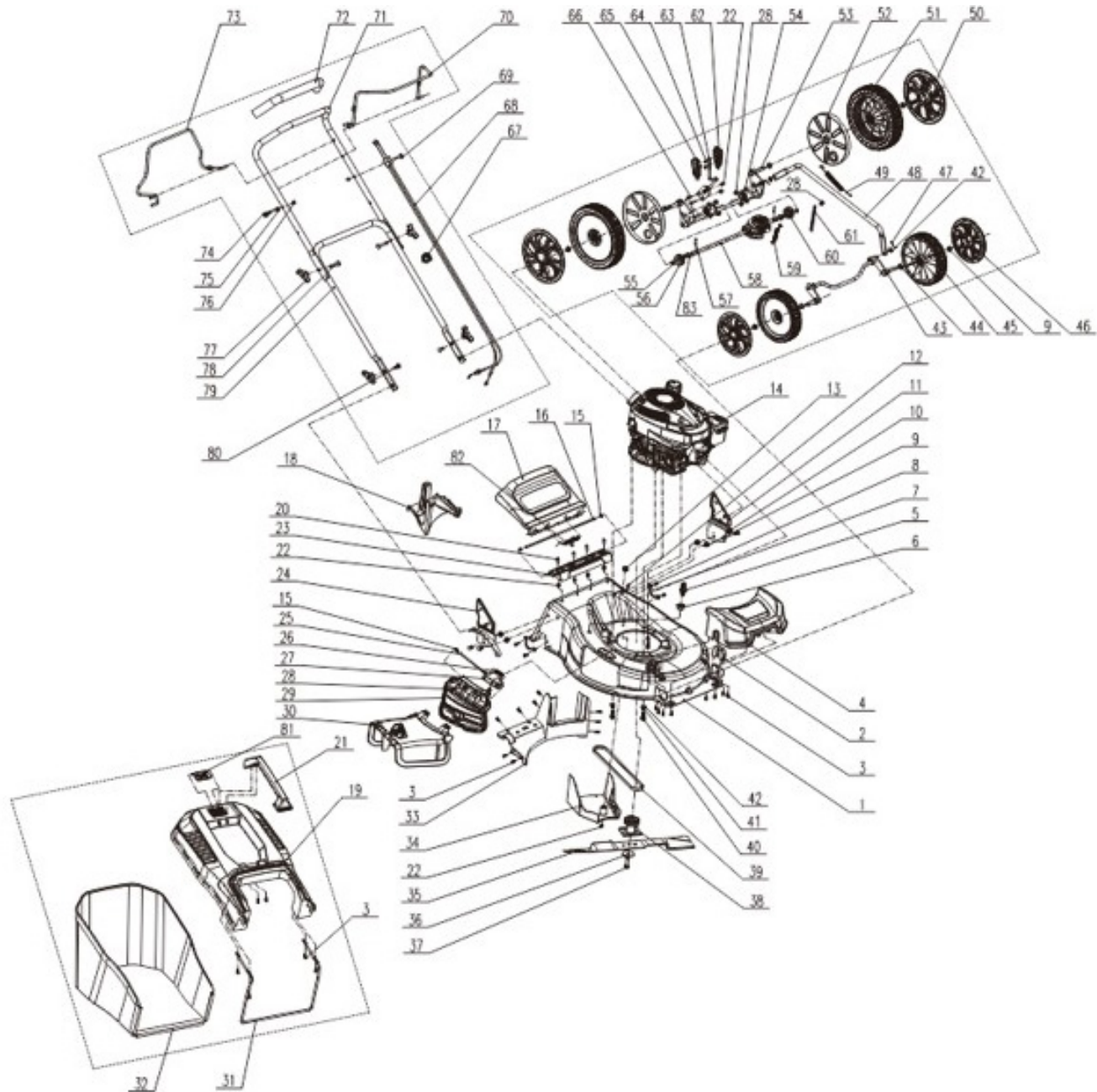
SL NO	PART NO	DESCRIPTION
1	AM-LM-18/21SP-EJ01	SELF-TAPPING SCREW
2	AM-LM-18/21SP-EJ02	MUFFLER OUTER COVER
3	AM-LM-18/21SP-EJ03	BOLT
4	AM-LM-18/21SP-EJ04	MUFFLER ASSY
5	AM-LM-18/21SP-EJ05	MUFFLER INSULATOR PLATE

FUEL TANK ASSY - K



SL NO	PART NO	DESCRIPTION
1	AM-LM-18/21SP-EK01	FUEL TANK ASSY
2	AM-LM-18/21SP-EK02	FUEL TANK COVER
3	AM-LM-18/21SP-EK03	FUEL STRAINER
4	AM-LM-18/21SP-EK04	PIPE CLAMP

TRANSMISSION PART DIAGRAM



SL NO	PART NO	DESCRIPTION	SL NO	PART NO	DESCRIPTION
1	AM-LM-18/21SP-T01	DECK	13	AM-LM-18/21SP-T13	CABLE SHEATH
2	AM-LM-18/21SP-T02	FRONT AXLE FIXED BLOCK	14	AM-LM-18/21SP-T14	SPLIT WASHER
3	AM-LM-18/21SP-T03	SCREW	15	AM-LM-18/21SP-T15	REAR COVER SHAFT
4	AM-LM-18/21SP-T04	HOOD	16	AM-LM-18/21SP-T16	REAR COVER
5	AM-LM-18/21SP-T05	CLEAN MOUTH	17	AM-LM-18/21SP-T17	" REAR PLUG"
6	AM-LM-18/21SP-T06	NUT, FLYWHEEL	18	AM-LM-18/21SP-T18	GRASS BOX TOP COVER
7	AM-LM-18/21SP-T07	REAR AXLE FIXING PLATE	19	AM-LM-18/21SP-T19	CROSS-RECESSED PAN HEAD SCREW
8	AM-LM-18/21SP-T08	SCREW	20	AM-LM-18/21SP-T20	GRASS BOX HANDLE
9	AM-LM-18/21SP-T09	NUT	21	AM-LM-18/21SP-T21	NUT
10	AM-LM-18/21SP-T10	BOLT	22	AM-LM-18/21SP-T22	CHASSIS SPACER
11	AM-LM-18/21SP-T11	LEFT ARMREST BRACKET	23	AM-LM-18/21SP-T23	RIGHT ARMREST BRACKET
12	AM-LM-18/21SP-T12	BOLT	24	AM-LM-18/21SP-T24	SIDE COVER SHAFT






SL NO	PART NO	DESCRIPTION	SL NO	PART NO	DESCRIPTION
25	AM-LM-18/21SP-T25	SIDE COVER TORSION SPRING	37	AM-LM-18/21SP-T37	KNIFE HOLDER
26	AM-LM-18/21SP-T26	SIDE ROW BRACKET	38	AM-LM-18/21SP-T38	V-BELT
27	AM-LM-18/21SP-T27	BOLT	39	AM-LM-18/21SP-T39	BOLT
28	AM-LM-18/21SP-T28	SIDE COVER	40	AM-LM-18/21SP-T40	SPRING WASHER
29	AM-LM-18/21SP-T29	SIDE GRASS GUIDES	41	AM-LM-18/21SP-T41	FLAT WASHER - GRADE A
30	AM-LM-18/21SP-T30	GRASS BOX STAND	42	AM-LM-18/21SP-T42	SHAFT, FRONT WHEEL
31	AM-LM-18/21SP-T31	GRASS BAG UNDER GRASS BOX	43	AM-LM-18/21SP-T43	WAVE ELASTIC WASHER
32	AM-LM-18/21SP-T32	REAR AIR DUCT	44	AM-LM-18/21SP-T44	HAND WHEEL
33	AM-LM-18/21SP-T33	BELT COVER	45	AM-LM-18/21SP-T45	WHEEL COVER
34	AM-LM-18/21SP-T34	BLADE	46	AM-LM-18/21SP-T46	COTTER PIN
35	AM-LM-18/21SP-T35	DISC WASHER	47	AM-LM-18/21SP-T47	CONNECTING ROD
36	AM-LM-18/21SP-T36	BOLT	48	AM-LM-18/21SP-T48	TENSION SPRING

SL NO	PART NO	DESCRIPTION	SL NO	PART NO	DESCRIPTION
49	AM-LM-18/21SP-T49	WHEEL COVER	61	AM-LM-18/21SP-T61	RAISE THE GLOVE
50	AM-LM-18/21SP-T50	SELF-PROPELLED WHEEL	62	AM-LM-18/21SP-T62	HANDLE BAR
51	AM-LM-18/21SP-T51	DUST WHEEL COVER	63	AM-LM-18/21SP-T63	SCREW
52	AM-LM-18/21SP-T52	REAR WHEEL SHAFT	64	AM-LM-18/21SP-T64	RAISE THE GLOVE
53	AM-LM-18/21SP-T53	SHAFT SLEEVE	65	AM-LM-18/21SP-T65	BOLT
54	AM-LM-18/21SP-T54	CIRCLIP FOR SHAFT - TYPE A	66	AM-LM-18/21SP-T66	WIRE CLIP
55	AM-LM-18/21SP-T55	DRIVE GEAR	67	AM-LM-18/21SP-T67	DRIVE STALL DOUBLE CABLE
56	AM-LM-18/21SP-T56	DRIVE GEAR PIN	68	AM-LM-18/21SP-T68	BOLT
57	AM-LM-18/21SP-T57	RETARDER PART	69	AM-LM-18/21SP-T69	BRAKE LEVER
58	AM-LM-18/21SP-T58	TENSION SPRING	70	AM-LM-18/21SP-T70	PUTT
59	AM-LM-18/21SP-T59	DRIVE GEAR	71	AM-LM-18/21SP-T71	HANDLE RUBBER SLEEVE
60	AM-LM-18/21SP-T60	WIRE CLIP	72	AM-LM-18/21SP-T72	DRIVE ROD

SL NO	PART NO	DESCRIPTION	SL NO	PART NO	DESCRIPTION
73	AM-LM-18/21SP-T73	DRAWSTRING HOOK			
74	AM-LM-18/21SP-T74	HEXAGON NUT WITH FLANGE			
75	AM-LM-18/21SP-T75	ACORN HEXAGON NUTS			
76	AM-LM-18/21SP-T76	LOCKING KNOB			
77	AM-LM-18/21SP-T77	SPECIAL-SHAPED BOLTS			
78	AM-LM-18/21SP-T78	DOWN PUTTER			
79	AM-LM-18/21SP-T79	BOLT			
80	AM-LM-18/21SP-T80	GRASS BOX INDICATOR DOOR			
81	AM-LM-18/21SP-T81	REAR COVER TORSION SPRING			
82	AM-LM-18/21SP-T82	FLAT WASHER			






WARRANTY CARD

CUSTOMER COPY

DATE _____	DATE OF DELIVERY _____	DEALERS OFFICIAL SEAL	DEALERS SIGN _____
PURCHASERS NAME & ADDRESS _____ _____	 CUSTOMER SIGN		
PRODUCT NAME	PRODUCT SERIAL NO.	INVOICE/DN NO.	
			






I/Will accept the terms and conditions of warranty as in the warranty card

DEALERS COPY

DATE _____	DATE OF DELIVERY _____	DEALERS OFFICIAL SEAL	DEALERS SIGN _____
PURCHASERS NAME & ADDRESS _____ _____	 CUSTOMER SIGN		
PRODUCT NAME	PRODUCT SERIAL NO.	INVOICE/DN NO.	
			

I/Will accept the terms and conditions of warranty as in the warranty card

COMPANY COPY

DATE _____	DATE OF DELIVERY _____	DEALERS OFFICIAL SEAL	DEALERS SIGN _____
PURCHASERS NAME & ADDRESS _____ _____	 CUSTOMER SIGN		
PRODUCT NAME	PRODUCT SERIAL NO.	INVOICE/DN NO.	
			

I/Will accept the terms and conditions of warranty as in the warranty card

1. LIMITED WARRANTY PERIOD : For a period of six months from the date of Sale / delivery of the product which ever is earlier. 2. LIMITED WARRANTY OBLIGATION : Replacement of defective part(s) by authorized dealer are free of charges. If found defective by reasons of defective material / poor workmanship, parts will be replaced and there will be no value re-imburement. 3. TERMS & CONDITIONS : a. Claims under warranty will be accepted on submission of Warranty Card duly filled and stamped by authorized dealer together with the original purchase document. : b. Shipping / transportation / Incidental charges incurred in replacing defective parts under warranty shall be borne by the purchaser

WARRANTY null & void if

- (i) Lack of maintenance, (ii) Incorrect use of the machine or tampering, (iii) Use of non-genuine spare parts, (iv) Usage of acids, solvents, or any flammable materials, (v) Non-usage of filter water / clear water / soft water & using water above 40°C temperature, (vi) While using the pressure washers to draw water which is contaminated with dust & solvents (eg. paint thinners, gasoline, oil, etc.), (vii) Repair done by unauthorized service people, (viii) Those parts subject to wear & tear due to normal operations and plastic parts, rubber items etc, (ix) Loose connections, faulty electrical fixtures & fluctuations in power supply.
- 4. Should any failure occur during or after the warranty period, customer does not have the right to interrupt payment / price discount.
- 5. Incidental or consequential damages like inconvenience commercial loss, loss of tie, mental agony etc.
- 6. Loss of any nature due to operation or non-operation is not covered under warranty.
- 7. All free service are at Dealer's service point only.
- 8. Warranty ceases if service is not done periodically.
- 9. The attached card should be completed and returned to Ratnagiri Impex Pvt. Ltd. for registration immediately after sale / delivery.
- 10. The warranty is void unless you register the warranty card with Ratnagiri Impex Pvt. Ltd.
- 11. The decision of Ratnagiri Impex Pvt. Ltd., in settling the warranty is final in all respects.
- 12. All disputes are subject to Bangalore Courts Jurisdiction

1. LIMITED WARRANTY PERIOD : For a period of six months from the date of Sale / delivery of the product which ever is earlier. 2. LIMITED WARRANTY OBLIGATION : Replacement of defective part(s) by authorized dealer are free of charges. If found defective by reasons of defective material / poor workmanship, parts will be replaced and there will be no value re-imburement. 3. TERMS & CONDITIONS : a. Claims under warranty will be accepted on submission of Warranty Card duly filled and stamped by authorized dealer together with the original purchase document. : b. Shipping / transportation / Incidental charges incurred in replacing defective parts under warranty shall be borne by the purchaser.

WARRANTY null & void if

- (i) Lack of maintenance, (ii) Incorrect use of the machine or tampering, (iii) Use of non-genuine spare parts, (iv) Usage of acids, solvents, or any flammable materials, (v) Non-usage of filter water / clear water / soft water & using water above 40°C temperature, (vi) While using the pressure washers to draw water which is contaminated with dust & solvents (eg. paint thinners, gasoline, oil, etc.), (vii) Repair done by unauthorized service people, (viii) Those parts subject to wear & tear due to normal operations and plastic parts, rubber items etc, (ix) Loose connections, faulty electrical fixtures & fluctuations in power supply.
- 4. Should any failure occur during or after the warranty period, customer does not have the right to interrupt payment / price discount.
- 5. Incidental or consequential damages like inconvenience commercial loss, loss of tie, mental agony etc.
- 6. Loss of any nature due to operation or non-operation is not covered under warranty.
- 7. All free service are at Dealer's service point only.
- 8. Warranty ceases if service is not done periodically.
- 9. The attached card should be completed and returned to Ratnagiri Impex Pvt. Ltd. for registration immediately after sale / delivery.
- 10. The warranty is void unless you register the warranty card with Ratnagiri Impex Pvt. Ltd.
- 11. The decision of Ratnagiri Impex Pvt. Ltd., in settling the warranty is final in all respects.
- 12. All disputes are subject to Bangalore Courts Jurisdiction

1. LIMITED WARRANTY PERIOD : For a period of six months from the date of Sale / delivery of the product which ever is earlier. 2. LIMITED WARRANTY OBLIGATION : Replacement of defective part(s) by authorized dealer are free of charges. If found defective by reasons of defective material / poor workmanship, parts will be replaced and there will be no value re-imburement. 3. TERMS & CONDITIONS : a. Claims under warranty will be accepted on submission of Warranty Card duly filled and stamped by authorized dealer together with the original purchase document. : b. Shipping / transportation / Incidental charges incurred in replacing defective parts under warranty shall be borne by the purchaser.

WARRANTY null & void if

- (i) Lack of maintenance, (ii) Incorrect use of the machine or tampering, (iii) Use of non-genuine spare parts, (iv) Usage of acids, solvents, or any flammable materials, (v) Non-usage of filter water / clear water / soft water & using water above 40°C temperature, (vi) While using the pressure washers to draw water which is contaminated with dust & solvents (eg. paint thinners, gasoline, oil, etc.), (vii) Repair done by unauthorized service people, (viii) Those parts subject to wear & tear due to normal operations and plastic parts, rubber items etc, (ix) Loose connections, faulty electrical fixtures & fluctuations in power supply.
- 4. Should any failure occur during or after the warranty period, customer does not have the right to interrupt payment / price discount.
- 5. Incidental or consequential damages like inconvenience commercial loss, loss of tie, mental agony etc.
- 6. Loss of any nature due to operation or non-operation is not covered under warranty.
- 7. All free service are at Dealer's service point only.
- 8. Warranty ceases if service is not done periodically.
- 9. The attached card should be completed and returned to Ratnagiri Impex Pvt. Ltd. for registration immediately after sale / delivery.
- 10. The warranty is void unless you register the warranty card with Ratnagiri Impex Pvt. Ltd.
- 11. The decision of Ratnagiri Impex Pvt. Ltd., in settling the warranty is final in all respects.
- 12. All disputes are subject to Bangalore Courts Jurisdiction



FREE SERVICE COUPON (30DAYS/30HRS. WHICHEVER IS EARLIER)

MODEL

SERIAL NUMBER

PDI DATE

SERVICE NO.

PURCHASE BILL NO.

DATE

DEALERS OFFICE SEAL

- 1. Check and test the fuel mixture
- 3. Check , clean and adjust the spark plug
- 5. Check and sparken the cutting tools
- 7. Start and check the noise, vibration, loosen etc..

OPERATIONS

- 2. check and clean the air filter
- 4. Check and adjust the carburetor tuning
- 6. Product familirisation on usage
- 8. Routine maintenance and shortage.

FREE SERVICE COUPON (30DAYS/30HRS. WHICHEVER IS EARLIER)

MODEL

SERIAL NUMBER

PDI DATE

SERVICE NO.

PURCHASE BILL NO.

DATE

DEALERS OFFICE SEAL

- 1. Check and test the fuel mixture
- 3. Check , clean and adjust the spark plug
- 5. Check and sparken the cutting tools
- 7. Start and check the noise, vibration, loosen etc..

OPERATIONS

- 2. check and clean the air filter
- 4. Check and adjust the carburetor tuning
- 6. Product familirisation on usage
- 8. Routine maintenance and shortage.

FREE SERVICE COUPON (30DAYS/30HRS. WHICHEVER IS EARLIER)

MODEL

SERIAL NUMBER

PDI DATE

SERVICE NO.

PURCHASE BILL NO.

DATE

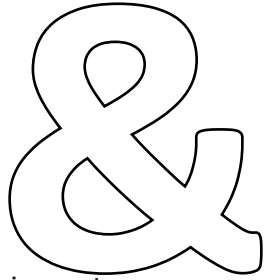
DEALERS OFFICE SEAL

- 1. Check and test the fuel mixture
- 3. Check , clean and adjust the spark plug
- 5. Check and sparken the cutting tools
- 7. Start and check the noise, vibration, loosen etc..

OPERATIONS

- 2. check and clean the air filter
- 4. Check and adjust the carburetor tuning
- 6. Product familirisation on usage
- 8. Routine maintenance and shortage.

DOS



DONT'S

attempting to use the equipments.

1. Always read the instruction manual supplied along with the equipments and understand the correct installation and operating procedures before

trousers and jackets while operating potentially dangerous machines
2. It is important to use the personal protection equipments such as head helmet with visor, ear defenders, goggles, safety gloves, cut resistant shoes,
3. Avoid untrained persons using the equipments. Children must not be allowed to handle these equipments
4. Always use genuine spares and accessories in repairs and usage to derive maximum life of the equipments.
5. Always keep the equipments in good working condition to minimize loss of output as well as to reduce the pollution and save the environment
6. Do not use the machine within range of persons unless they wear protective clothing
7. Do not operate the machine when fatigued or under the influence of alcohol or drugs
8. For more query kindly contact for our Service Center/Dealer/ franchise

NO. 1 CHOICE OF FARMERS SINCE 1999



Marketed by.
**ratnagiri
impex**
BRINGING YOU THE FUTURE... NOW

RATNAGIRI IMPEX PVT., LTD.,

Annapurna House, #1 / 1G, 7th Cross, New
Guddadahalli

Mysore Road, Bangalore - 560 026

Missed Call : 7393 938 938

Email: ask@agrimart.in