

# AM LS 518 with AM 152PE Gasoline Engine



**DISCLAIMER:** DUE TO CONSTANT UPGRADATION, FEATURES AND SPECIFICATIONS ARE SUBJECT TO CHANGE WITHOUT NOTICE



BEFORE OPERATING THIS MACHINE,  
PLEASE READ THESE INSTRUCTIONS CAREFULLY

## INTRODUCTION

Please peruse the contents in the instruction manual prior to use this machine, correctly carried out installation and debugging, as well as used it strictly cording to the working specification in the instruction manual. The user should be familiar with the safety notices, machine performance, and maintenance, etc. The instruction manual will be used in the later use, repair, accessories replacement, and accessories procurement, so please keep it carefully

## OPERATING INSTRUCTION

- 1 Securely mount the machine on the frame, ensured the two belt pulleys be parallel and on the same plane, and the tension of belt be moderate;
- 2 Add 30~40# machine oil up to 1/2 of oil gauge plug;
- 3 The connectors of each rubber pipe and high pressure pipe must be locked tightly ;
- 4 Before start the motor, open the jet gun and ball cock, and loosen the adjusting screw;
- 5 Start the motor, keeping it at appropriate velocity; Waiting there is water ejecting from the jet gun , close the jet gun or ball cock, and adjust the adjusting screw to let the pressure reach the working pressure;
- 6 Turn on the ball cock and jet gun, beginning spraying. During the process may properly adjust the adjusting screw to maintain the required pressure, and lock tightly the fly nut at any moment;
- 7 After spraying , operate the sprayer with clean water for 2~3 minutes to clean the residual interior chemicals;
- 8 Firstly dismantle the suction hose, waiting there is no water flowing out from the jet gun or the overflow hose, stop the machine and dismantle over flow hose, high pressure pipe, and loosen the adjusting screw.

# TECHNICAL PARAMETERS

## AM LS 518 - POWER SPRAYER

RPM	500-900
Flow (L/Min)	6-10
Working Pressure (Kgf/cm <sup>2</sup> )	20-35
Power (HP)	1-2
Piston Dia (mm)	18
Stroke (mm)	16

**A Quality Product - Taiwan Joint Venture**

## TROUBLE ANALYSIS

Trouble	Cause	Solution
Can't supply water Unstable pressure	Strainer Assy blocked	Clean Strainer Assy
	Suction Hose leaked	Lock tightly Wing Net or replace Packing
	Redundant air inside pump	Exhaust redundant air inside pump
	Valve damaged or blocked	Eliminate impurities or replace Valve Seal
Cylinder leaked	Grand too loose	Lock tightly Grand (After machine stopped)
	V-packing damaged	Replace V-packing
Pressure shortage	Improper pressure adjustment	Adjust adjusting screw to proper pressure
	Belt too loose	Adjust belt to moderate tension
	High pressure pipe leaked	Check, repair, or replace high pressure pipe
	Valve or valve seat damaged	Replace valve or valve seat
Leaked oil	Oil seal damaged, unlocked tightly	Lock tightly or replace relevant oil seal
Temperature too high	No lubricating oil or too dirty	Add grease on time, replace clean lubricating oil
	Pressure or velocity too high	Adjust to proper pressure or velocity

**We reserve the right for revision without further notice !**

## MAINTENANCE AND SERVICE

1. Replace the oil after begin use for 40 hours, and thence replace it one time using each 70 hours;
2. Add grease one time each two hours during using;
3. After each work finished, operate it with clean water for 2 ~ 3 minutes to eliminate the residual chemical and keep each parts clean;
4. For long term placement, wipe clean the spraying machine and place it at the cool and dry place.

## SAFETY NOTICES

1. Using this machine with extra high pressure is prohibited (Should  $\leq 35\text{kgf/cm}^2$ );
2. The belt pulley should have safety protective device;
3. Should wear such protective tools as breathing mask in spraying, and spraying toward personnel and working at the downwind position are prohibited;
4. Running without water or lubricating oil is prohibited;
5. Using such special working solutions as strong acid, strong alkali, etc. is prohibited, and should operate strictly according to the safety prompts of manufacturing plant in spraying.

## ACCESSORIES



Content	
Suction Hose 5m	Strainer
Over Flow Hose 5m	User Manual with warranty card
V Pulley	Standard Tools & Accessories



## SPARE PARTS OF AM LS 518 POWER SPRAYER

SL.NO.	PARTS NAME
AM LS 518 01	Crank Case
AM LS 518 02	Ring CrankCase
AM LS 518 03	Cover CrankCase
AM LS 518 04	Oil Gauge Plug
AM LS 518 05	O-Ring28x2.4
AM LS 518 06	Screw
AM LS 518 07	Ring 18x2.4
AM LS 518 08	Oil Plug
AM LS 518 09	Bed CrankCase
AM LS 518 10	Plunger Cover
AM LS 518 11	Crank Shaft
AM LS 518 12	Connecting Rod
AM LS 518 13	Plunger Pin
AM LS 518 14	Plunger
AM LS 518 15	Bearing
AM LS 518 16	Oil Seal,Crank Shaft
AM LS 518 17	Cover,Oil Seal
AM LS 518 18	Cover,Shaft
AM LS 518 19	Pully
AM LS 518 20	Oil Seal,Plunger

## SPARE PARTS OF AM LS 518 POWER SPRAYER

SL.NO.	PARTS NAME
AM LS 518 21	O-Ring21x2.5
AM LS 518 22	Grand
AM LS 518 23	O-Ring22x2
AM LS 518 24	Grease Ring
AM LS 518 25	V-Packing
AM LS 518 26	V-Packing Seat
AM LS 518 27	Cylinder
AM LS 518 28	Packing Stable Plate
AM LS 518 29	Grease Cup(seat)
AM LS 518 30	Grease Cup(head)
AM LS 518 31	Valve Assy
AM LS 518 32	Suction Metal
AM LS 518 33	Ball Cock
AM LS 518 34	Discharge Metal
AM LS 518 35	Pressure Gauge
AM LS 518 36	O-Ring21x2.5
AM LS 518 37	Air Chamber
AM LS 518 38	O-Ring17x2
AM LS 518 39	Valve Seat
AM LS 518 40	Body Overflow

## SPARE PARTS OF AM LS 518 POWER SPRAYER

SL.NO.	PARTS NAME
AM LS 518 41	Valve
AM LS 518 42	Valve Bar
AM LS 518 43	Box WaterSeal
AM LS 518 44	Under Metal
AM LS 518 45	Spring
AM LS 518 46	Upper Metal
AM LS 518 47	Spring Box
AM LS 518 48	Pin
AM LS 518 49	Fastener
AM LS 518 50	Lever
AM LS 518 51	Fly Nut
AM LS 518 52	Adjusting Screw
AM LS 518 53	O-Ring13.5x2
AM LS 518 54	Core Coupling
AM LS 518 55	Wing Net
AM LS 518 56	Brass Cup
AM LS 518 57	Overflow Hose
AM LS 518 58	Packing 17x13
AM LS 518 59	Core Coupling
AM LS 518 60	Wing Net



## SPARE PARTS OF AM LS 518 POWER SPRAYER

SL.NO.	PARTS NAME
AM LS 518 61	Brass Cup
AM LS 518 62	Overflow Hose
AM LS 518 63	Core Strainer
AM LS 518 64	Strainer Assy
AM LS 518 65	Valve Seal
AM LS 518 66	Valve Seat
AM LS 518 67	Stopper
AM LS 518 68	Valve Spring
AM LS 518 69	Spring Box
AM LS 518 70	O-Ring18x2.4
AM LS 518 71	Adjusting Belt
AM LS 518 72	Key
AM LS 518 73	Cylinder Assy
AM LS 518 74	Discharge Metal Assy
AM LS 518 75	Overflow Hose Assy
AM LS 518 76	Suction Hose Assy
AM LS 518 77	Spring Box Assy
AM LS 518 78	Body Overflow Assy
AM LS 518 79	Adjusting Assy

# AM 152PE Gasoline Engine



## SUMMARY

152PE GENERAL GASOLINE ENGINE with single – cylinder, 4-stroke, OHV air-forced cooling is very useful and popular.

## SAFETY PRECAUTIONS

**! Warning:** The machine may be mangled or cause accident if not following the under-mentioned item:

- a. Strictly prohibit run the machine under neither overcharge, over-rev nor low-charge, low-rev.
- b. Keep the oil plants filtrated adequately before usage and make sure use gasoline and oil of stated trademark.
- c. Check the degree of tightness of the bolt termly.
- d. Clean the element of air-cleaner termly and replace it if necessary.
- e. To ensure the gasoline engine cool down normally, please clean up the sundries and feculence on the fan dully.
- f. Persist to current maintenance, and obviate malfunctions in time.
- g. Do not touch the muffler, flywheel etc. during in use in case of damage of clay.

### b. Important bolt screw-moment

Unit	:	N•m
Connecting bolt between the cylinder and the cover(M6)	:	16 N•m
Connecting bolt of the crankcase cover(M6)	:	16 N•m
Connecting rod bolt	:	12 N•m
Flywheel bolt	:	45 N•m
Other bolts	:	8-10 N•m

## OIL PLANTS SPECIFICATION

- a. Gasoline: recommend to use 93#gasoline.
- b. Oil, crankcase: SE15-40 4-stroke lubricating oil.

## OPERATION

1. Preparation before operation
  - a. Check the connection of each parts, ensure they are in order.
  - b. Open the crankcase cover, then inject the gasoline.
  - c. Pull the handle-recoil, see if the pressure in the cylinder is natural.
2. Starting
  - a. Open the fuel tank switch and the ignition switch, then close the choke of the carburetor and turn the actiyator to 1/2-3 level.
  - b. Slowly pull the handle-rope for several times, inject the gasoline into the cylinder , then quickly pull the rope again.
  - c. When the machine is running, open the choke.
3. Stop running
  - a. Turn down the accelerograph, run the machine for 4-5 minutes at a low rev.
  - b. Cut down the ignition switch, stop running.
  - c. Cut off the oil switch.

## QUALITY GUARANTEE

Any of the malfunctions or inefficiency being caused by our manufacturing (testified by our company), would enjoy our quality guarantee service within the period of validity except:

- a. Any badness or deformity or worsening of the product(s) due to improper transportation or preservation or exceeding storing time.
- b. The damage(s) of the product(s) due to not following the instructions of Owner's Manual to operate/maintain/preserve the product(s).
- c. The product(s) is/are without sales invoice or quality guarantee card, or the serial number(s) of the product(s) is/are not conform to the serial number(s) written in quality guarantee card.
- d. The damage(s) due to the force event.

## PACKING LIST OF 152PE-1 GASOLINE ENGINE

Items	QTY
152 Gasoline Engine	1
Spark Plug	1
Owner's Manual	1
Qualification certificate	1

# TECHNICAL SPECIFICATION

## GENERAL GASOLINE ENGINE

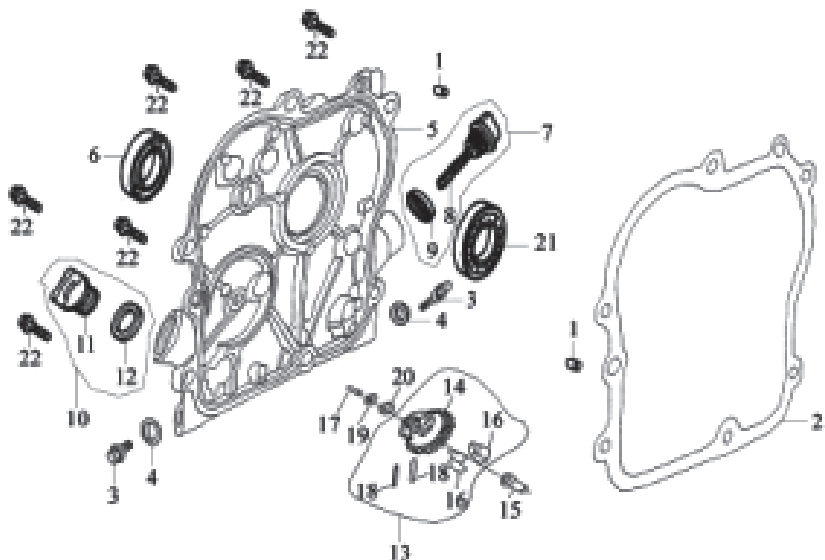
AM model	AM152PE
Type	single-cylinder,4-stroke,OHV air-forced cooling
Ignition	Non-contact transistorized ignition
Lubricate	splash
Start	Recoil
Fuel consumption (g / kw. h)	≤450
Displacement CC	98
Max Power KW(HP)/RPM	1.8kW(2.5)/3600
Rated Power KW(HP)/RPM	1.15kW(1.6)/3600
Bore Stroke mm	52X46
Fuel Tank Capacity L	1.3
Oil Capacity L	0.3
Max Torque Nm/RPM	3.2/3000
Net Weight KG	8.5
Gross Weight KG	10
Packing Size mm	330x300x400

# SPARE PARTS DIAGRAM OF AM 152PE GASOLINE ENGINE

CRANKCASE COVER ASSY

**A**

PART 1



S.N.	PART NO.	DESCRIPTION
1	AM 152PE-A1	Set pin $\phi 8 \times 14$
2	AM 152PE-A2	Gasket,crankcase
3	AM 152PE-A3	Drain plug
4	AM 152PE-A4	Washer
5	AM 152PE-A5	Crankcase cover
6	AM 152PE-A6	Oil seal(17× 30×6)
7	AM 152PE-A7	crankshaft
8	AM 152PE-A8	Dipstick sub-assy
9	AM 152PE-A9	Dipstick
10	AM 152PE-A10	Seal, dipstick
11	AM 152PE-A11	Oil plug sub-assy
12	AM 152PE-A12	Oil plug

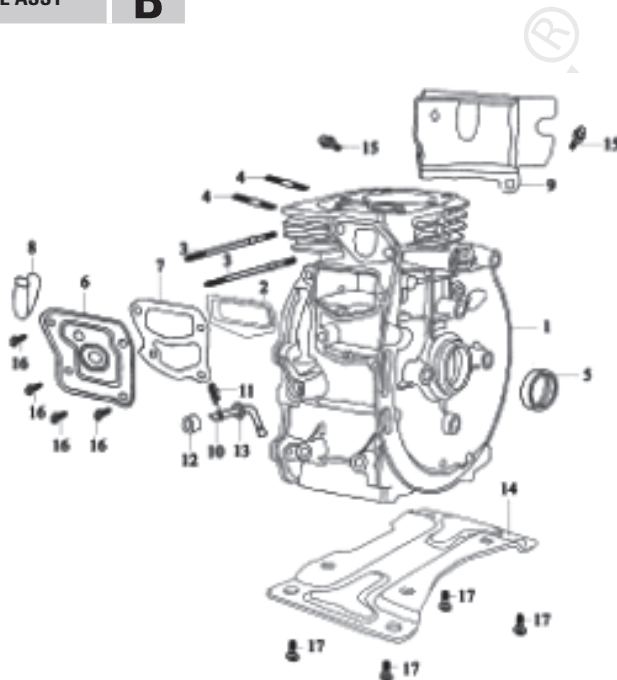
S.N.	PART NO.	DESCRIPTION
13	AM 152PE-A13	Seal,oil plug
14	AM 152PE-A14	Driven gear sub-assy, governor
15	AM 152PE-A15	Driven gear, governor
16	AM 152PE-A16	Sliding sleeve
17	AM 152PE-A17	Flyweight
18	AM 152PE-A18	Governing shaft
19	AM 152PE-A19	Pin, flyweight
20	AM 152PE-A20	Snap ring
21		ball bearing
22		bolt

# SPARE PARTS DIAGRAM OF AM 152PE GASOLINE ENGINE

CRANKCASE ASSY

**B**

PART 3



S.N.	PART NO.	DESCRIPTION
1	AM 152PE-B1	Crankcase
2	AM 152PE-B2	Valve chamber clapboard sub-assy
3	AM 152PE-B3	Stud M5x115
4	AM 152PE-B4	Stud M6x55
5	AM 152PE-B5	Oil seal(17x30x6)
6	AM 152PE-B6	crankshaft
7	AM 152PE-B7	Cover, oil filter
8	AM 152PE-B8	Gasket

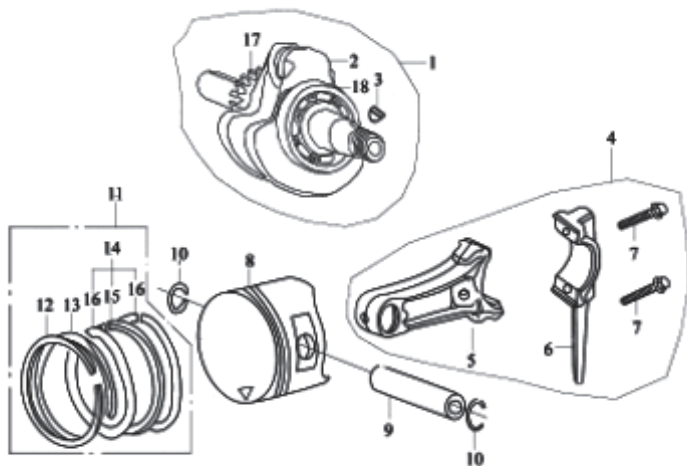
S.N.	PART NO.	DESCRIPTION
9	AM 152PE-B9	Return pipe
10	AM 152PE-B10	Flow guard, lower Sway bar
11	AM 152PE-B11	Keeper, sway bar
12	AM 152PE-B12	Oil seal, sway bar
13	AM 152PE-B13	Washer, sway bar
14	AM 152PE-B14	Bottom plate
15	AM 152PE-B15	Bolt M6x14
16	AM 152PE-B16	Bolt M5x10
17	AM 152PE-B17	Bolt M8x14

# SPARE PARTS DIAGRAM OF AM 152PE GASOLINE ENGINE

**CRANKSHAFT, PISTON  
CONNECTING ROD**

**C**

**PART 5**



S.N.	PART NO.	DESCRIPTION
1	AM 152PE-C1	Crankshaft sub-assy
2	AM 152PE-C2	Crankshaft
3	AM 152PE-C3	Woodruff key
4	AM 152PE-C4	Connecting rod
5	AM 152PE-C5	Shank
6	AM 152PE-C6	Cap connecting rod
7	AM 152PE-C7	Bolt M5×24
8	AM 152PE-C8	Piston
9	AM 152PE-C9	Piston pin

S.N.	PART NO.	DESCRIPTION
10	AM 152PE-C10	Circlip, piston pin
11	AM 152PE-C11	Piston ring set
12	AM 152PE-C12	Piston ring(I), Piston ring(II)
13	AM 152PE-C13	Oil ring, 3-piece
14	AM 152PE-C14	Expander
15	AM 152PE-C15	Side rail
16	AM 152PE-C16	Timing driving gear
17	AM 152PE-C17	Bearing 6203

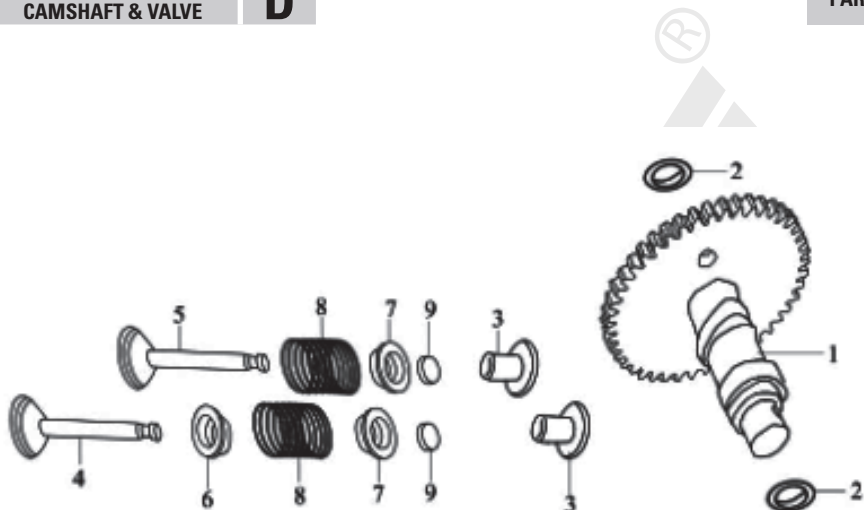


# SPARE PARTS DIAGRAM OF AM 152PE GASOLINE ENGINE

COMBINATION OF  
CAMSHAFT & VALVE

**D**

PART 7



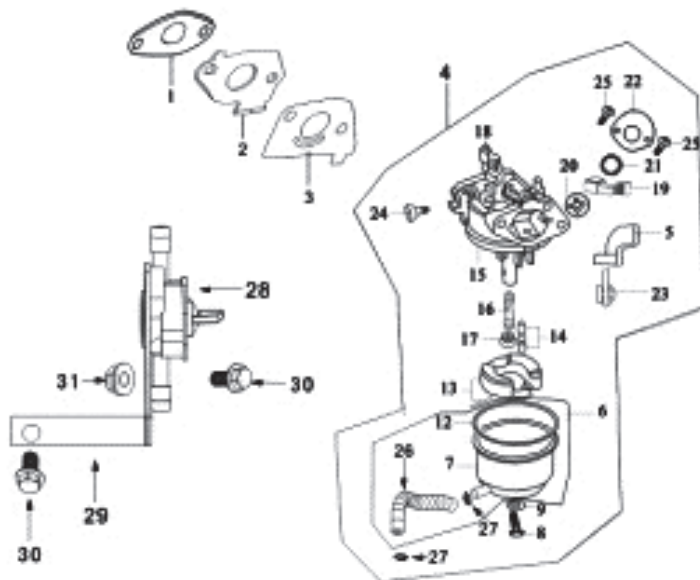
S.N.	PART NO.	DESCRIPTION
1	AM 152PE-D1	Camshaft
2	AM 152PE-D2	Washer,Camshaft
3	AM 152PE-D3	Tappet
4	AM 152PE-D4	Intake valve
5	AM 152PE-D5	Exhaust valve
6	AM 152PE-D6	Oil seal, valve stem
7	AM 152PE-D7	Spring seat, Valve
8	AM 152PE-D8	Valve spring
9	AM 152PE-D9	Cap

# SPARE PARTS DIAGRAM OF AM 152PE GASOLINE ENGINE

CARBURETOR ASSY

**E**

PART 9



S.N.	PART NO.	DESCRIPTION
1	AM 152PE-E1	Gasket, intake port
2	AM 152PE-E2	Carburetor assy
3	AM 152PE-E3	Connecting block
4	AM 152PE-E4	Gasket, carburetor
5	AM 152PE-E5	Choke lever
6	AM 152PE-E6	Float chamber sub-assy
7	AM 152PE-E7	Float chamber
8	AM 152PE-E8	Screw
9	AM 152PE-E9	Seal, screw
10	AM 152PE-E10	Drain screw, float chamber
11	AM 152PE-E11	Washer
12	AM 152PE-E12	Gasket, float chamber
13	AM 152PE-E13	Float sub-assy
14	AM 152PE-E14	Needle valve
15	AM 152PE-E15	Mixture chamber body

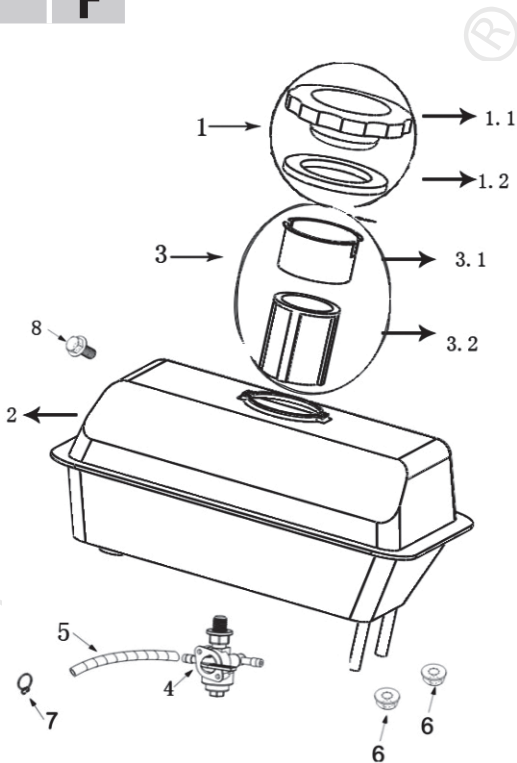
S.N.	PART NO.	DESCRIPTION
16	AM 152PE-E16	Main nozzle
17	AM 152PE-E17	Main jet
18	AM 152PE-E18	N/A
19	AM 152PE-E19	N/A
20	AM 152PE-E20	N/A
21	AM 152PE-E21	N/A
22	AM 152PE-E22	N/A
23	AM 152PE-E23	N/A
24	AM 152PE-E24	N/A
25	AM 152PE-E25	N/A
26	AM 152PE-E26	N/A
27	AM 152PE-E27	N/A
28	AM 152PE-E28	N/A
29	AM 152PE-E29	N/A
30	AM 152PE-E30	N/A

# SPARE PARTS DIAGRAM OF AM 152PE GASOLINE ENGINE

FUEL TANK ASSY

**F**

PART 11



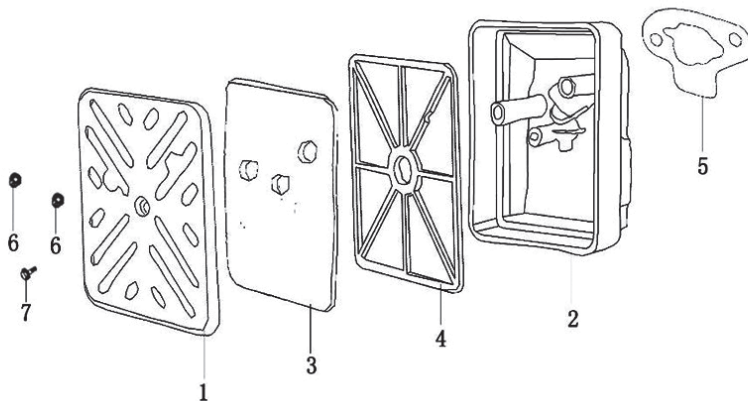
S.N.	PART NO.	DESCRIPTION
1	AM 152PE-F1	Oil tank combination
2	AM 152PE-F1.1	Oil tank cover
3	AM 152PE-F1.2	Oil tank cover seal
4	AM 152PE-F2	Oil tank
5	AM 152PE-F3	Filter cup
6	AM 152PE-F4	Oil outlet pipe
7	AM 152PE-F5	nut
8	AM 152PE-F6	Oil tube clip
9	AM 152PE-F7	bolt

# SPARE PARTS DIAGRAM OF AM 152PE GASOLINE ENGINE

CLEANER ASSY

G

PART 13



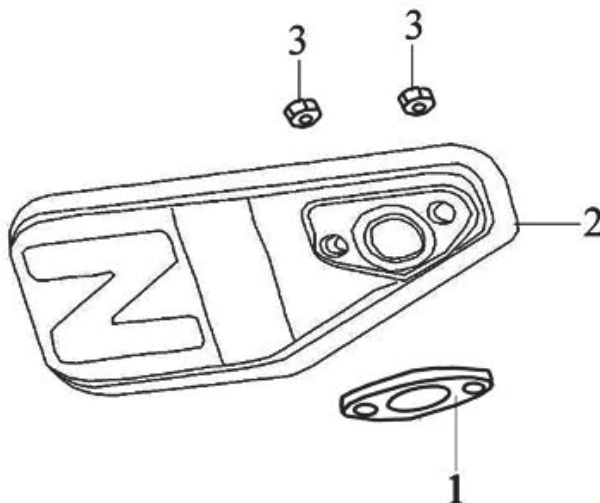
S.N.	PART NO.	DESCRIPTION
1	AM 152PE-G1	Cover,air cleaner
2	AM 152PE-G2	Housing, air cleaner
3	AM 152PE-G3	Foam, air cleaner
4	AM 152PE-G4	Bracket, air cleaner
5	AM 152PE-G5	Gasket, air cleaner
6	AM 152PE-G6	Nut M5
7	AM 152PE-G7	Self-tapping screw ST4×10

# SPARE PARTS DIAGRAM OF AM 152PE GASOLINE ENGINE

MUFFLER

H

PART 15



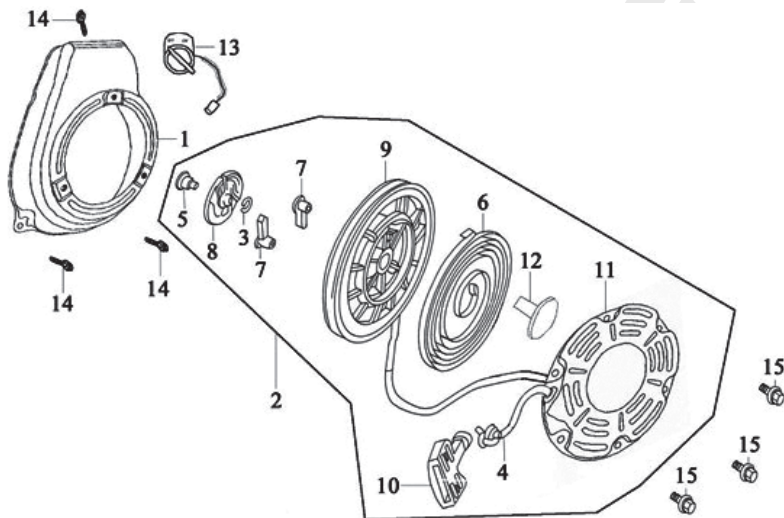
S.N.	PART NO.	DESCRIPTION
1	AM 152PE-H1	Gasket,exhaust port
2	AM 152PE-H2	Exhaust muffler
3	AM 152PE-H3	Nut M6

# SPARE PARTS DIAGRAM OF AM 152PE GASOLINE ENGINE

RECOIL STARTER

J

PART 17



S.N.	PART NO.	DESCRIPTION
1	AM 152PE-J1	Fan hood sub-assy
2	AM 152PE-J2	Recoil starter
3	AM 152PE-J3	Friction spring
4	AM 152PE-J4	Rope
5	AM 152PE-J5	Shoulder screw
6	AM 152PE-J6	Spiral spring
7	AM 152PE-J7	Ratchet
8	AM 152PE-J8	Lid, spring

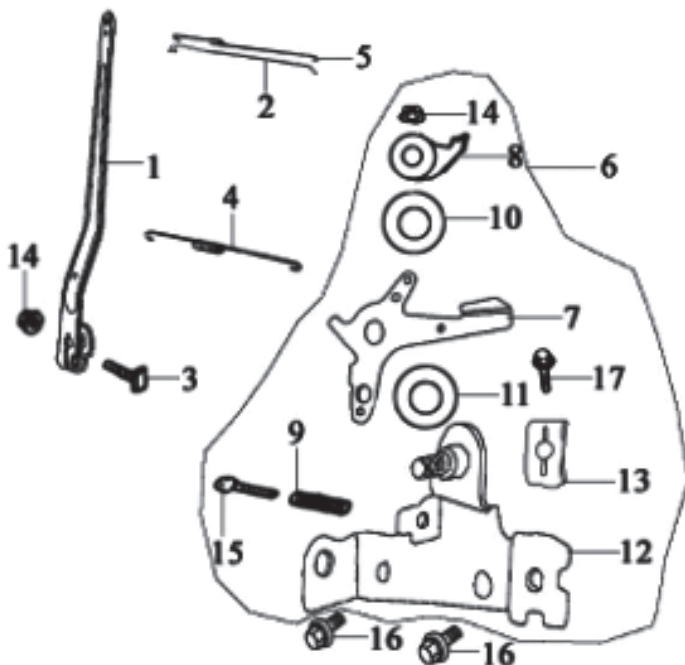
S.N.	PART NO.	DESCRIPTION
9	AM 152PE-J9	Spool, starter
10	AM 152PE-J10	Grip, starter
11	AM 152PE-J11	Casing
12	AM 152PE-J12	Spring seat
13	AM 152PE-J13	Engine switch
14	AM 152PE-J14	Bolt M6×10
15	AM 152PE-J15	Bolt M6×14

# SPARE PARTS DIAGRAM OF AM 152PE GASOLINE ENGINE

**GOVERNING CONTROL SYSTEM**

**K**

**PART 19**



S.N.	PART NO.	DESCRIPTION
1	AM 152PE-K1	Governor arm
2	AM 152PE-K2	Pull-rod, governor
3	AM 152PE-K3	Lock bolt
4	AM 152PE-K4	Return spring
5	AM 152PE-K5	Assistant spring, governor
6	AM 152PE-K6	Mount, governor
7	AM 152PE-K7	Handle

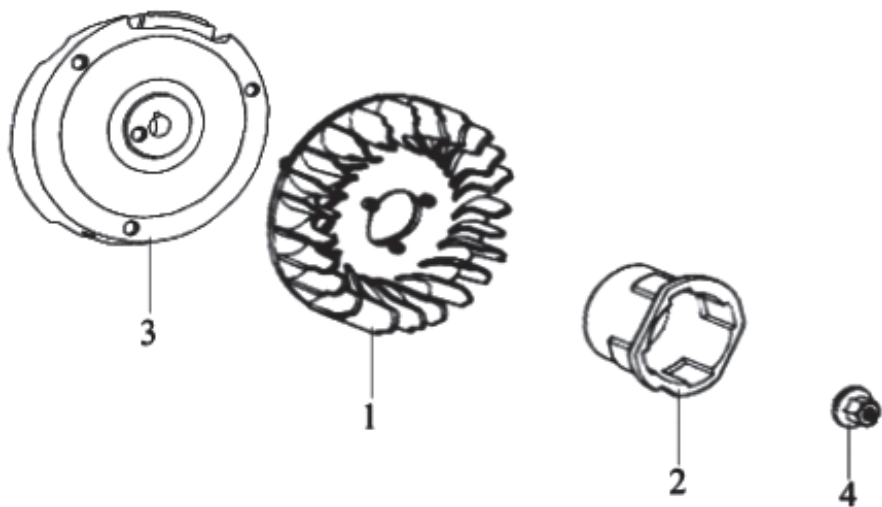
S.N.	PART NO.	DESCRIPTION
8	AM 152PE-K8	Positioning plate
9	AM 152PE-K9	Spring, governor
10	AM 152PE-K10	Wave washer
11	AM 152PE-K11	Washer
12	AM 152PE-K12	Supporting plate unit
13	AM 152PE-K13	Pressure plate
14	AM 152PE-K14	Nut M6

# SPARE PARTS DIAGRAM OF AM 152PE GASOLINE ENGINE

FLYWHEEL

L

PART 21



S.N.	PART NO.	DESCRIPTION
1	AM 152PE-L1	Fan,flywheel
2	AM 152PE-L2	Starting flange
3	AM 152PE-L3	Flywheel
4	AM 152PE-L4	Nut M12x1.25

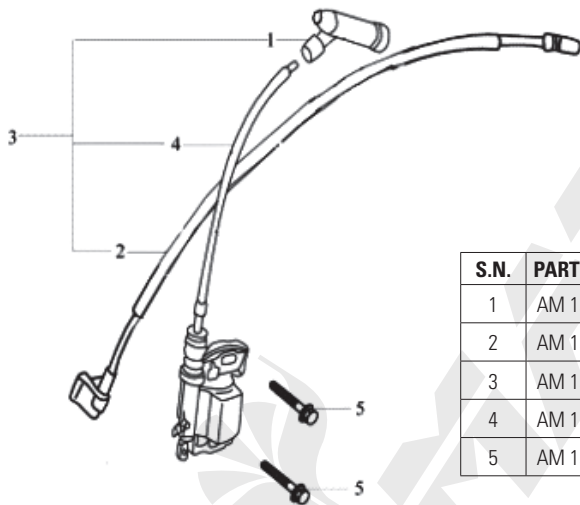


# SPARE PARTS DIAGRAM OF AM 152PE GASOLINE ENGINE

## IGNITION COIL

# M

### PART 23

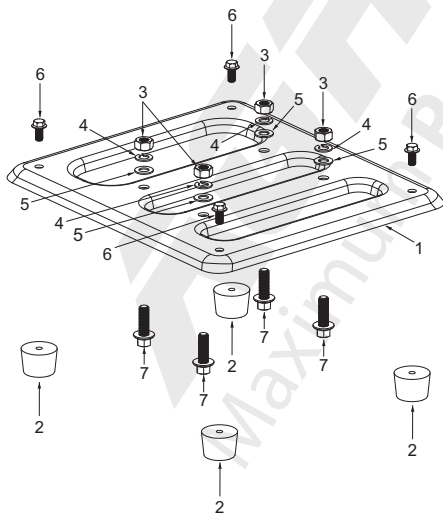


S.N.	PART NO.	DESCRIPTION
1	AM 152PE-M1	Cap, spark plug
2	AM 152PE-M2	Cable, engine stop
3	AM 152PE-M3	Ignition coil sub-assy
4	AM 152PE-M4	Ignition coil
5	AM 152PE-M5	Bolt M6x25

## FRAME PARTS

# N

### PART 25



S.N.	PART NO.	DESCRIPTION
1	AM 152PE-N1	Frame
2	AM 152PE-N2	Frame absorber
3	AM 152PE-N3	Nut
4	AM 152PE-N4	Spring washer
5	AM 152PE-N5	Washer
6	AM 152PE-N6	Bolt
7	AM 152PE-N7	Bolt

## INSPECTION & MAINTENANCE

For safety use, make sure the machine is cleaned every three-months. Before working, make sure to inspect the filter and the nozzle, and ensure there is no impurity. After working, make sure there is no water in the pump and the hose.

If the machine needs to be repaired in the guarantee period, please return the machine to the shop. You need to provide the certificate of purchase in order to repair or get the substitute.

Before Packing, the machine should be cleaned, then use closed packaging, packaging should be firm. Store the machine in dry place.

For transportation safety. The machine should comply with ISTA.



Meaning of crossed - out wheeled dustbin:

Do not dispose of electrical machines as unsorted municipal waste, use separate collection facilities.

If electrical machines are disposed of in landfills or dumps, hazardous substances can leak into the groundwater and get into the food chain, damaging your health and well-being.

When replacing old machines with new ones, the retailer is legally obligated to take back your old machine for disposals at least free of charge.

## Warranty Card

CUSTOMER COPY



Purchaser's Name & Address

\_\_\_\_\_  
\_\_\_\_\_

Product Name

AM LS 518 with AM 152PE Gasoline Engine

Product Serial No.

\_\_\_\_\_  
\_\_\_\_\_

Invoice / DN No.

\_\_\_\_\_

Date of Delivery

\_\_\_\_\_

Dealer's Office Seal

\_\_\_\_\_

Dealer Sign \_\_\_\_\_

Customer Sign. \_\_\_\_\_

I/We accept the terms and conditions of Warranty as in the Warranty Card.

## Warranty Card

DEALER'S COPY



Purchaser's Name & Address

\_\_\_\_\_  
\_\_\_\_\_

Product Name

AM LS 518 with AM 152PE Gasoline Engine

Product Serial No.

\_\_\_\_\_  
\_\_\_\_\_

Invoice / DN No.

\_\_\_\_\_

Date of Delivery

\_\_\_\_\_

Dealer's Office Seal

\_\_\_\_\_

Dealer Sign \_\_\_\_\_

Customer Sign. \_\_\_\_\_

I/We accept the terms and conditions of Warranty as in the Warranty Card.

## Warranty Card

COMPANY COPY



Purchaser's Name & Address

\_\_\_\_\_  
\_\_\_\_\_

Product Name

AM LS 518 with AM 152PE Gasoline Engine

Product Serial No.

\_\_\_\_\_  
\_\_\_\_\_

Invoice / DN No.

\_\_\_\_\_

Date of Delivery

\_\_\_\_\_

Dealer's Office Seal

\_\_\_\_\_

Dealer Sign \_\_\_\_\_

Customer Sign. \_\_\_\_\_

I/We accept the terms and conditions of Warranty as in the Warranty Card.

1. **LIMITED WARRANTY PERIOD** : For a period of six months from the date of Sale / delivery of the product which ever is earlier. 2. **LIMITED WARRANTY OBLIGATION** : Replacement of defective part(s) by authorized dealer are free of charges. If found defective by reasons of defective material / poor workmanship, parts will be replaced and there will be no value re-imbursalment. 3. **TERMS & CONDITIONS** : a. Claims under warranty will be accepted on submission of Warranty Card duly filled and stamped by authorized dealer together with the original purchase document. : b. Shipping / transportation / Incidental charges incurred in replacing defective parts under warranty shall be borne by the purchaser.

**WARRANTY null & void if**

- (i) Lack of maintenance, (ii) Incorrect use of the machine or tampering, (iii) Use of non-genuine spare parts, (iv) Usage of acids, solvents, or any flammable materials, (v) Non-usage of filter water / clear water / soft water & using water above 40°C temperature, (vi) While using the pressure washers to draw water which is contaminated with dust & solvents (eg. paint thinners, gasoline, oil, etc.), (vii) Repair done by unauthorized service people, (viii) Those parts subject to wear & tear due to normal operations and plastic parts, rubber items etc, (ix) Loose connections, faulty electrical fixtures & fluctuations in power supply.
4. Should any failure occur during or after the warranty period, customer does not have the right to interrupt payment / price discount.
5. Incidental or consequential damages like inconvenience commercial loss, loss of tie, mental agony etc.
6. Loss of any nature due to operation or non-operation is not covered under warranty.
7. All free service are at Dealer's service point only.
8. Warranty ceases if service is not done periodically.
9. The attached card should be completed and returned to Ratnagiri Impex Pvt. Ltd. for registration immediately after sale / delivery.
10. The warranty is void unless you register the warranty card with Ratnagiri Impex Pvt. Ltd.
11. The decision of Ratnagiri Impex Pvt. Ltd., in settling the warranty is final in all respects.
12. All disputes are subject to Bangalore Courts Jurisdiction

1. **LIMITED WARRANTY PERIOD** : For a period of six months from the date of Sale / delivery of the product which ever is earlier. 2. **LIMITED WARRANTY OBLIGATION** : Replacement of defective part(s) by authorized dealer are free of charges. If found defective by reasons of defective material / poor workmanship, parts will be replaced and there will be no value re-imbursalment. 3. **TERMS & CONDITIONS** : a. Claims under warranty will be accepted on submission of Warranty Card duly filled and stamped by authorized dealer together with the original purchase document. : b. Shipping / transportation / Incidental charges incurred in replacing defective parts under warranty shall be borne by the purchaser.

**WARRANTY null & void if**

- (i) Lack of maintenance, (ii) Incorrect use of the machine or tampering, (iii) Use of non-genuine spare parts, (iv) Usage of acids, solvents, or any flammable materials, (v) Non-usage of filter water / clear water / soft water & using water above 40°C temperature, (vi) While using the pressure washers to draw water which is contaminated with dust & solvents (eg. paint thinners, gasoline, oil, etc.), (vii) Repair done by unauthorized service people, (viii) Those parts subject to wear & tear due to normal operations and plastic parts, rubber items etc, (ix) Loose connections, faulty electrical fixtures & fluctuations in power supply.
4. Should any failure occur during or after the warranty period, customer does not have the right to interrupt payment / price discount.
5. Incidental or consequential damages like inconvenience commercial loss, loss of tie, mental agony etc.
6. Loss of any nature due to operation or non-operation is not covered under warranty.
7. All free service are at Dealer's service point only.
8. Warranty ceases if service is not done periodically.
9. The attached card should be completed and returned to Ratnagiri Impex Pvt. Ltd. for registration immediately after sale / delivery.
10. The warranty is void unless you register the warranty card with Ratnagiri Impex Pvt. Ltd.
11. The decision of Ratnagiri Impex Pvt. Ltd., in settling the warranty is final in all respects.
12. All disputes are subject to Bangalore Courts Jurisdiction

1. **LIMITED WARRANTY PERIOD** : For a period of six months from the date of Sale / delivery of the product which ever is earlier. 2. **LIMITED WARRANTY OBLIGATION** : Replacement of defective part(s) by authorized dealer are free of charges. If found defective by reasons of defective material / poor workmanship, parts will be replaced and there will be no value re-imbursalment. 3. **TERMS & CONDITIONS** : a. Claims under warranty will be accepted on submission of Warranty Card duly filled and stamped by authorized dealer together with the original purchase document. : b. Shipping / transportation / Incidental charges incurred in replacing defective parts under warranty shall be borne by the purchaser.

**WARRANTY null & void if**

- (i) Lack of maintenance, (ii) Incorrect use of the machine or tampering, (iii) Use of non-genuine spare parts, (iv) Usage of acids, solvents, or any flammable materials, (v) Non-usage of filter water / clear water / soft water & using water above 40°C temperature, (vi) While using the pressure washers to draw water which is contaminated with dust & solvents (eg. paint thinners, gasoline, oil, etc.), (vii) Repair done by unauthorized service people, (viii) Those parts subject to wear & tear due to normal operations and plastic parts, rubber items etc, (ix) Loose connections, faulty electrical fixtures & fluctuations in power supply.
4. Should any failure occur during or after the warranty period, customer does not have the right to interrupt payment / price discount.
5. Incidental or consequential damages like inconvenience commercial loss, loss of tie, mental agony etc.
6. Loss of any nature due to operation or non-operation is not covered under warranty.
7. All free service are at Dealer's service point only.
8. Warranty ceases if service is not done periodically.
9. The attached card should be completed and returned to Ratnagiri Impex Pvt. Ltd. for registration immediately after sale / delivery.
10. The warranty is void unless you register the warranty card with Ratnagiri Impex Pvt. Ltd.
11. The decision of Ratnagiri Impex Pvt. Ltd., in settling the warranty is final in all respects.
12. All disputes are subject to Bangalore Courts Jurisdiction



ratnagiri  
impex  
BRINGING THE BEST TO YOU - NOW

### 1st Free Service Coupon

ISO 9001-2008  
CERTIFIED COMPANY

#### FREE SERVICE COUPON (30 Days / 20 hrs (Which ever is earlier))

Model  
AM LS 518 with AM 152PE Gasoline Engine

Serial Number

PDI Date

Service No.

Purchase bill no.      Date

Dealer's Office Seal & Signature

- Operations:
- Check and Test the Fuel Mixture.
  - Check and Clean the Air Filter
  - Check, Clean and Adjust the Spark plug
  - Check and Adjust the Carburetor Tuning
  - Check and Sharpen the cutting Tools
  - Start and Check the Noise, Vibration, Loosen / Fasteners etc.
  - Product familiarization on Usage
  - Routine maintenance and Storage

Customer Signature.....

Conditions: Operations listed have been performed to my entire satisfaction without any labour charges. Only consumables were charged.



agriculture | horticulture | sericulture | plantations | forestry | garden | health care

WARRANTY AND FREE SERVICE COUPON



ratnagiri  
impex  
BRINGING THE BEST TO YOU - NOW

### 2nd Free Service Coupon

ISO 9001-2008  
CERTIFIED COMPANY

#### FREE SERVICE COUPON (30 Days / 20 hrs (Which ever is earlier))

Model  
AM LS 518 with AM 152PE Gasoline Engine

Serial Number

PDI Date

Service No.

Purchase bill no.      Date

Dealer's Office Seal & Signature

- Operations:
- Check and Test the Fuel Mixture.
  - Check and Clean the Air Filter
  - Check, Clean and Adjust the Spark plug
  - Check and Adjust the Carburetor Tuning
  - Check and Sharpen the cutting Tools
  - Start and Check the Noise, Vibration, Loosen / Fasteners etc.
  - Product familiarization on Usage
  - Routine maintenance and Storage

Customer Signature.....

Conditions: Operations listed have been performed to my entire satisfaction without any labour charges. Only consumables were charged.



agriculture | horticulture | sericulture | plantations | forestry | garden | health care

WARRANTY AND FREE SERVICE COUPON



ratnagiri  
impex  
BRINGING THE BEST TO YOU - NOW

### 3rd Free Service Coupon

ISO 9001-2008  
CERTIFIED COMPANY

#### FREE SERVICE COUPON (30 Days / 20 hrs (Which ever is earlier))

Model  
AM LS 518 with AM 152PE Gasoline Engine

Serial Number

PDI Date

Service No.

Purchase bill no.      Date

Dealer's Office Seal & Signature

- Operations:
- Check and Test the Fuel Mixture.
  - Check and Clean the Air Filter
  - Check, Clean and Adjust the Spark plug
  - Check and Adjust the Carburetor Tuning
  - Check and Sharpen the cutting Tools
  - Start and Check the Noise, Vibration, Loosen / Fasteners etc.
  - Product familiarization on Usage
  - Routine maintenance and Storage

Customer Signature.....

Conditions: Operations listed have been performed to my entire satisfaction without any labour charges. Only consumables were charged.



agriculture | horticulture | sericulture | plantations | forestry | garden | health care

WARRANTY AND FREE SERVICE COUPON



Small Maintenance. Big Savings.



Small Maintenance. Big Savings.



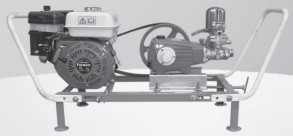
Small Maintenance. Big Savings.

# Do's & Don'ts

- Always read the instruction manual supplied along with the equipments and understand the correct installation and operating procedures before attempting to use the equipments.
- It is important to use the personal protection equipments such as head helmet with visor, ear defenders, goggles, safety gloves, cut resistant shoes, trousers and jackets while operating potentially dangerous machines.
- Avoid untrained persons using the equipments. Children must not be allowed to handle these equipments.
- Always use genuine spares and accessories in repairs and usage to derive maximum life of the equipments.
- Always keep the equipments in good working condition to minimise loss of output as well as to reduce the pollution and save the environment.
- Do not use the machine within range of persons unless they wear protective clothing.
- Do not operate the machine when fatigued or under the influence of alcohol or drugs.
- When the machine is running, please maintain a constant water supply. Without water circulation will damage the sealing rings of the machine.
- For more query kindly contact for our Service Center/Dealer/ franchise

# Agrimate Army For Pest Control

ANY WHERE - ANY TIME - ANY CROP



  
**AGRIMATE**<sup>®</sup>  
Maximum Power - Super Economy

RATNAGIRI IMPEX PVT., LTD.,  
Annapurna House, #1/1G, 7th Cross, New Guddadahalli  
Mysore Road, Bangalore - 560 026  
Customer Care: 1800-425-3036  
Email: [info@ratnagiriimpe.com](mailto:info@ratnagiriimpe.com)



Marketed by:  
 **ratnagiri**  
**impex**  
BRINGING YOU THE FUTURE... NOW

[www.ratnagiriimpe.com](http://www.ratnagiriimpe.com)

AN ISO 9001:2008 CERTIFIED COMPANY