

INTERCULTIVATOR/POWER WEEDER AM-MPTC-1100-6D-CHAMPION NEW MANUAL START

ENGINE PART DIAGRAM



INTRODUCTION

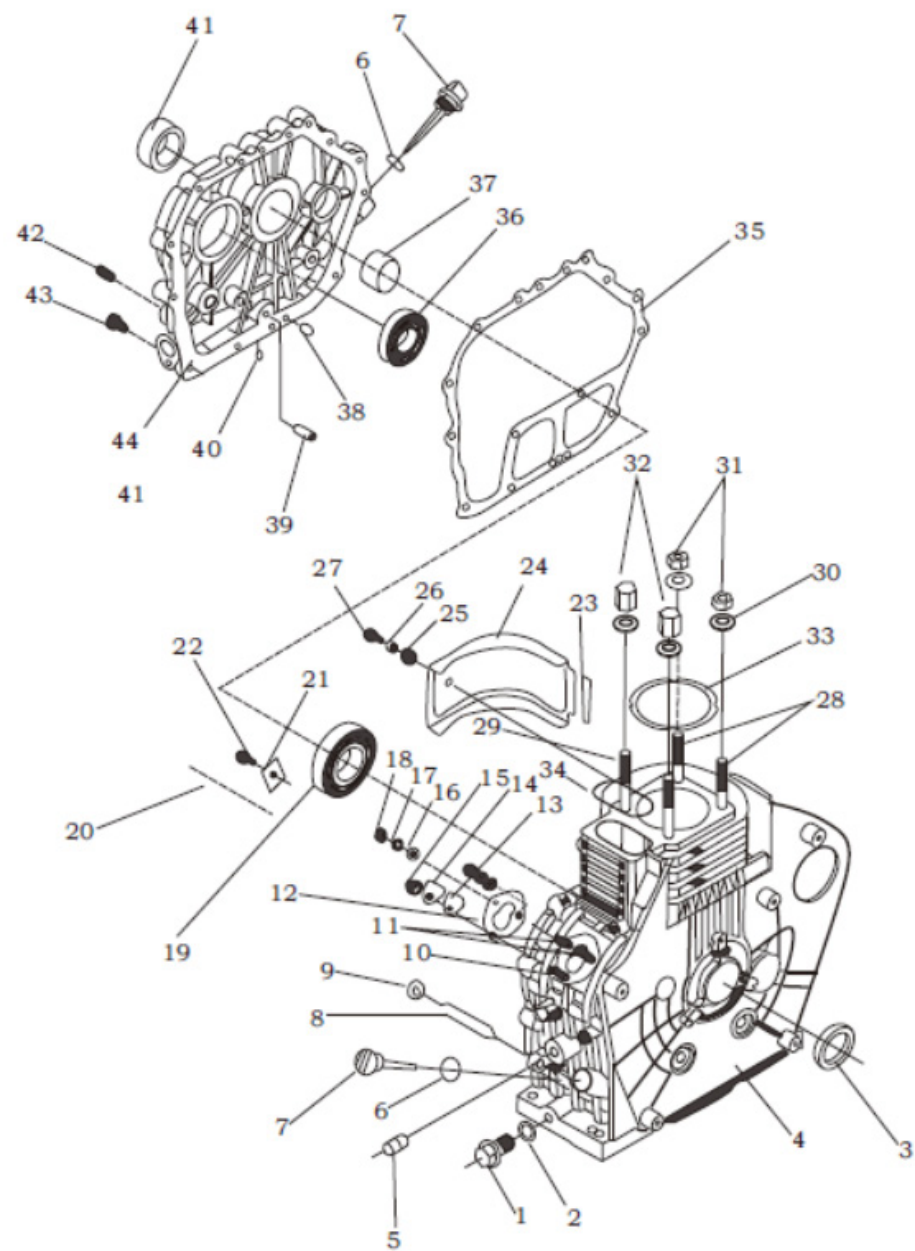
Please pursue the contents in the instructions manual prior to using this machine, correctly carried out installation and debugging, as well as use it strictly according to the working specifications in the instruction manual. The user should be familiar with the safety notices, machine performance and maintenance, etc. The instruction manual will be used in the later use, repair, accessories replacement, and accessories procurement, so please keep it carefully.

OPERATING INSTRUCTION

1. Securely mount the machine on the frame, ensure the two belt pulleys be parallel and on the same plane, and the tension of belt be moderate.
2. Add 30~ 40# machine oil up to 1/2 of oil gauge plug
3. The connectors of each rubber pipe and high pressure pipe must be locked tightly.
4. Before start the motor, open the jet gun and ball cock and loosen the adjusting screw
5. Start the motor, keeping it at appropriate velocity, waiting there is water ejecting from the jet gun, close the jet gun or ball cock, and adjust screw to let the pressure reach the working pressure.
6. Turn on the ball cock and jet gun, beginning spraying. During the process may properly adjust the adjusting screw to maintain the required pressure and lock tightly the fly nut at any moment.
7. After spraying, operate the sprayer with clean water for 2~3 minutes to clean the residual interior chemicals.
8. Firstly dismantle the suction hose, waiting there is no water flowing out from the jet gun or the overflow hose, stop the machine and dismantle overflow hose, high pressure pipe and loosen the adjusting screw.

TECHNICAL SPECIFICATIONS

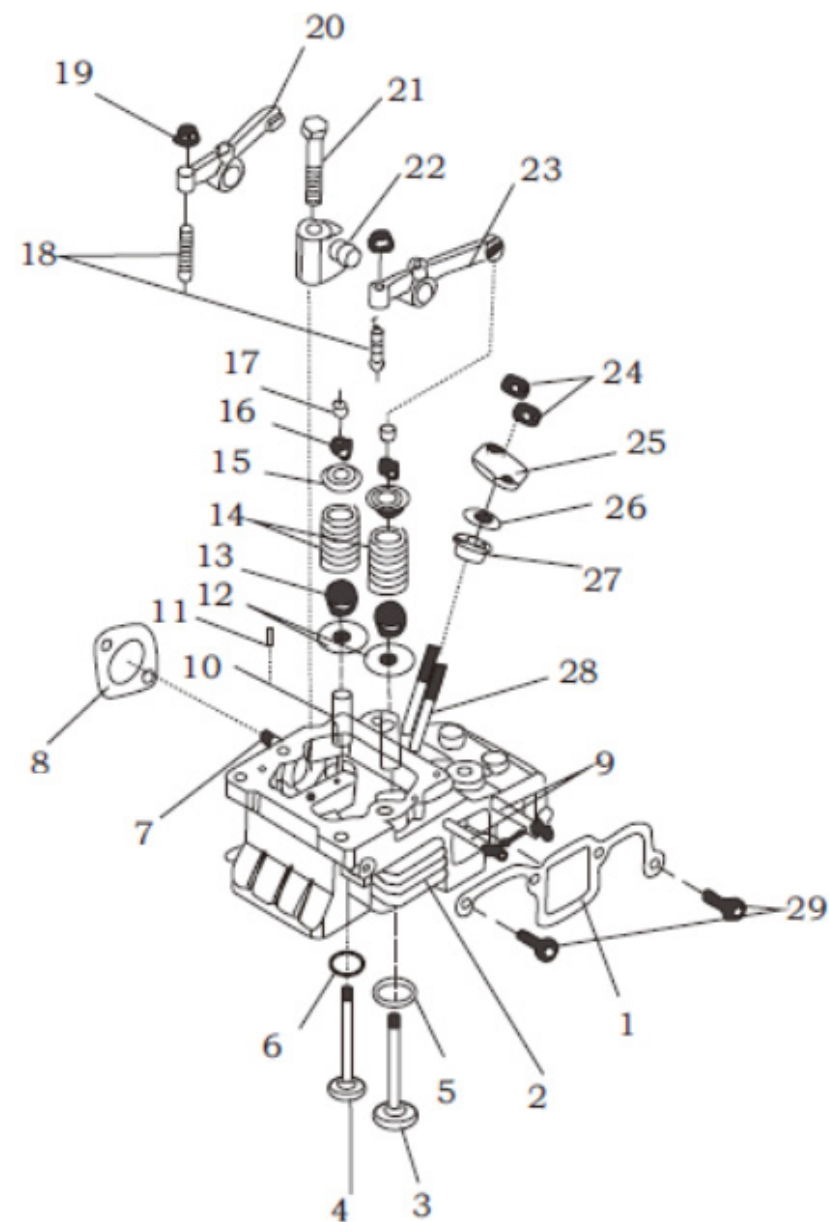
Model	AM-RTD-6D CHAMPION NEW
Engine	AM-178FD
Starting	MANUAL
Displacement	296CC
Fuel Tank Capacity	3.5LTR
Driving Model	GEAR TRANSMISSION
Oil Capacity in Gear box	2.2LTR
Gears	2 FORWARD,1 REVERSE
Tilling Width	1050MM
Tilling Depth	≥150MM
Net Weight	128



SL NO	PART NO	DESCRIPTION	SL NO	PART NO	DESCRIPTION
1	AM-178FDM-A01	Drain Plug Screw	16	AM-178FDM-A16	Gasket
1.1	AM-178FDM-A1.1	Connecting bolt of drain plug	17	AM-178FDM-A17	Gasket
2	AM-178FDM-A02	Washer Unit of Drain Plug	18	AM-178FDM-A18	Nut
3	AM-178FDM-A03	Oil Seal	19	AM-178FDM-A19	Ball Bearing
4	AM-178FDM-A04	Cylinder Block	20	AM-178FDM-A20	Needle Bearing
5	AM-178FDM-A05	Needle Bearing	21	AM-178FDM-A21	Thrust Plate
6	AM-178FDM-A06	O-Ring	22	AM-178FDM-A22	Bolt
7	AM-178FDM-A07	Oil Dipstick	23	AM-178FDM-A23	Cushion blocking
8	AM-178FDM-A08	Fuel Controller Assem	24	AM-178FDM-A24	Governor
9	AM-178FDM-A09	Nut	25	AM-178FDM-A25	Vibration isolation cushion block
10	AM-178FDM-A10	Forcing Stud of Fuel Injection Pump(Short)	26	AM-178FDM-A26	Sheath
11	AM-178FDM-A11	Forcing Stud of Fuel Injection Pump(Short)	27	AM-178FDM-A27	Bolt
12	AM-178FDM-A12	Fuel Injection Pump Washer	28	AM-178FDM-A28	Cylinder Head Stud Bolt(Short)
13	AM-178FDM-A13	Joint Washer	29	AM-178FDM-A29	Cylinder Head Stud Bolt(Long)
14	AM-178FDM-A14	Seal Plate	30	AM-178FDM-A30	Cylinder Head Nut Gasket
15	AM-178FDM-A15	Nut	31	AM-178FDM-A31	Cylinder Head Nut(Thin)

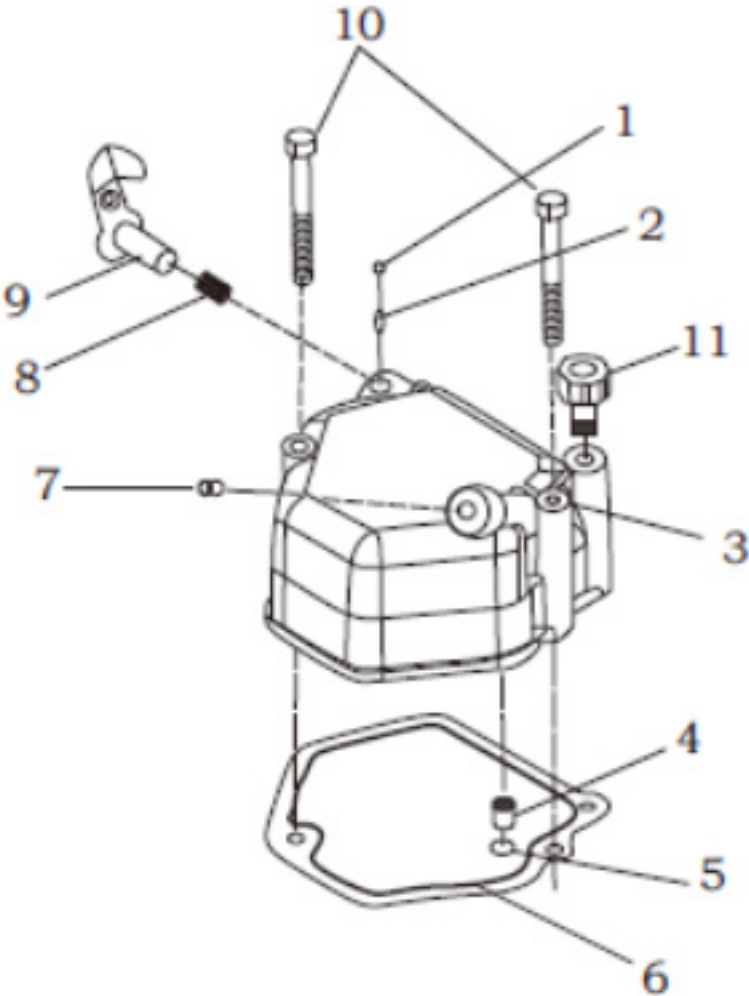
SL NO	PART NO	DESCRIPTION	SL NO	PART NO	DESCRIPTION
32	AM-178FDM-A32	Cylinder Head Nut(Thick)			
33	AM-178FDM-A33	Cylinder Head Shim			
34	AM-178FDM-A34	Sheet Gasket			
35	AM-178FDM-A35	Crankcase Cover Washer			
36	AM-178FDM-A36	Ball Bearing			
37	AM-178FDM-A37	Main Bearing			
38	AM-178FDM-A38	Pin			
39	AM-178FDM-A39	Oil Conduit			
40	AM-178FDM-A40	Plunger			
41	AM-178FDM-A41	Oil Seal			
42	AM-178FDM-A42	Hexagonal Internal Screw Plug			
43	AM-178FDM-A42.1	Oil indicator			
44	AM-178FDM-A43	Bolt			
45	AM-178FDM-A44	Crankcase Cover			

Cylinder Head Assembly - B



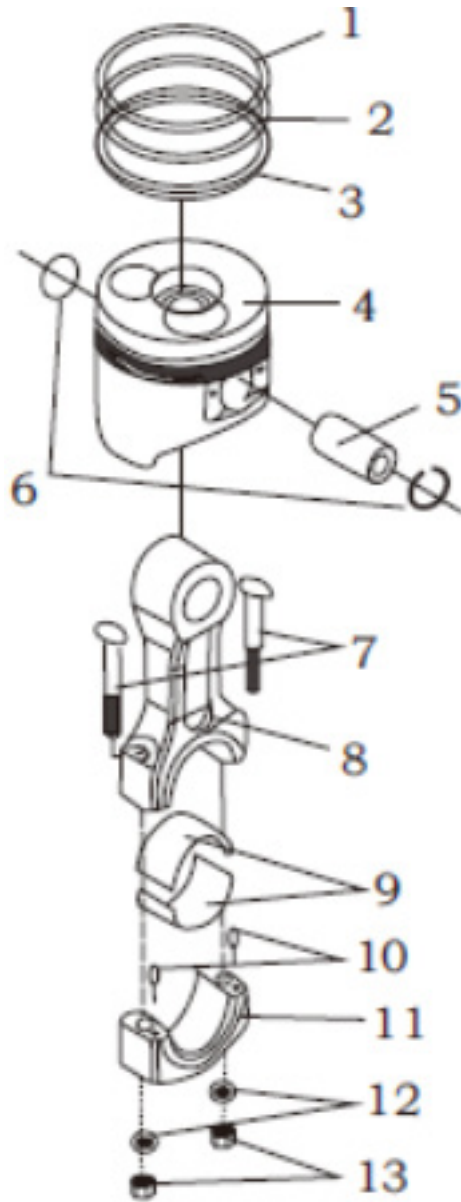
SL NO	PART NO	DESCRIPTION	SL NO	PART NO	DESCRIPTION
1	AM-178FDM-B01	Intake Pipe Shim	17	AM-178FDM-B17	Valve Adjusting Cushion
2	AM-178FDM-B02	Cylinder Head	18	AM-178FDM-B18	Valve Clearance Adjusting Screw
3	AM-178FDM-B03	Intake Valve	19	AM-178FDM-B19	Valve Clearance Adjustment Locking Nut
4	AM-178FDM-B04	Exhaust Valve	20	AM-178FDM-B20	Exhaust Valve Rocker Arm
5	AM-178FDM-B05	Inlet Valve seat	21	AM-178FDM-B21	Set Bolt of Rocker Arm Seat
6	AM-178FDM-B06	Exhaust Valve Stud	22	AM-178FDM-B22	Rocker Arm Seat Assem
7	AM-178FDM-B07	Stud	23	AM-178FDM-B23	Intake Valve Rocker Arm
8	AM-178FDM-B08	Muffler Shim	24	AM-178FDM-B24	Nut
9	AM-178FDM-B09	Stud	25	AM-178FDM-B25	Fuel Injection Valve Retainer
10	AM-178FDM-B10	Valve conduit	26	AM-178FDM-B26	Heat Insulator Gasket
11	AM-178FDM-B11	Pin	27	AM-178FDM-B27	Heat Insulator
12	AM-178FDM-B12	Valve Spring Gasket	28	AM-178FDM-B28	Stud
13	AM-178FDM-B13	Valve Conduit Oil Seal	29	AM-178FDM-B29	Stud
14	AM-178FDM-B14	Valve Spring			
15	AM-178FDM-B15	Valve Spring Seat			
16	AM-178FDM-B16	Valve Retaining Clip			

Cyl.Head Cover Assembly - C



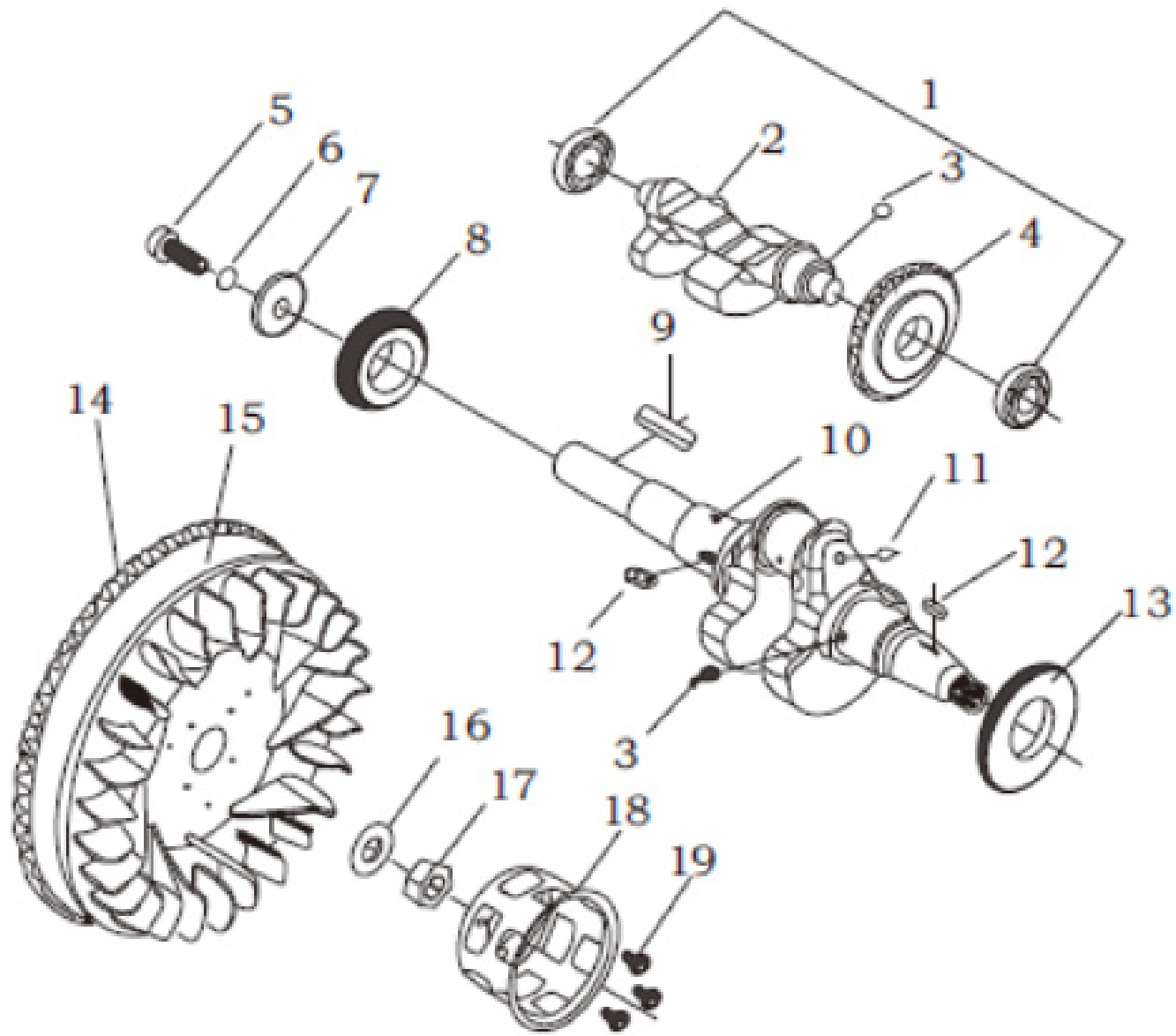
SL NO	PART NO	DESCRIPTION
1	AM-178FDM-C01	Steel ball
2	AM-178FDM-C02	Rolling pin
3	AM-178FDM-C03	Cylinder Head Cover
4	AM-178FDM-C04	Breather Seat
5	AM-178FDM-C05	O-Ring
6	AM-178FDM-C06	Cylinder Head Cover Washer
7	AM-178FDM-C07	Plunger
8	AM-178FDM-C08	Decompression Spring
9	AM-178FDM-C09	Decompression Shaft Assem
10	AM-178FDM-C10	Bolt
11	AM-178FDM-C11	Filler Screw Plug

Piston & Connecting Rod Assembly - D



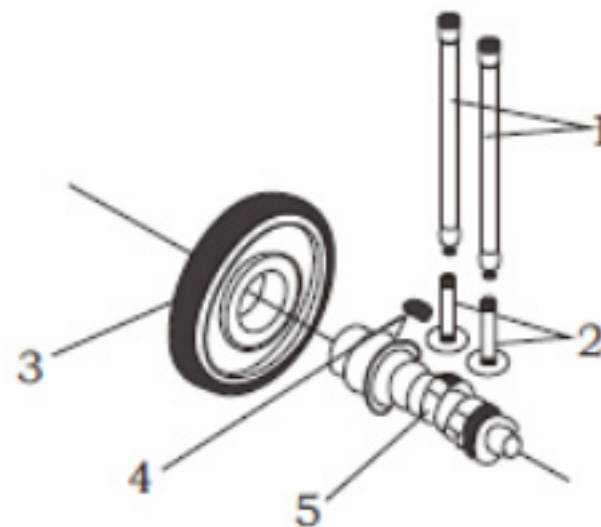
SL NO	PART NO	DESCRIPTION
1	AM-178FDM-D01	First Air Ring
2	AM-178FDM-D02	Second Air Ring
3	AM-178FDM-D03	Oil Ring Assem
4	AM-178FDM-D04	Piston
5	AM-178FDM-D05	Piston Pin
6	AM-178FDM-D06	Retainer Ring
7	AM-178FDM-D07	Connecting Rod Bolt
8	AM-178FDM-D08	Connecting Rod Block
9	AM-178FDM-D09	Connecting Rod Shaft Bushing
10	AM-178FDM-D10	Pin
11	AM-178FDM-D11	Connecting Rod Cover
12	AM-178FDM-D12	Connecting Rod Bolt Gasket
13	AM-178FDM-D13	Connecting Rod Nut

Crank Shaft & Flywheel Assembly - E



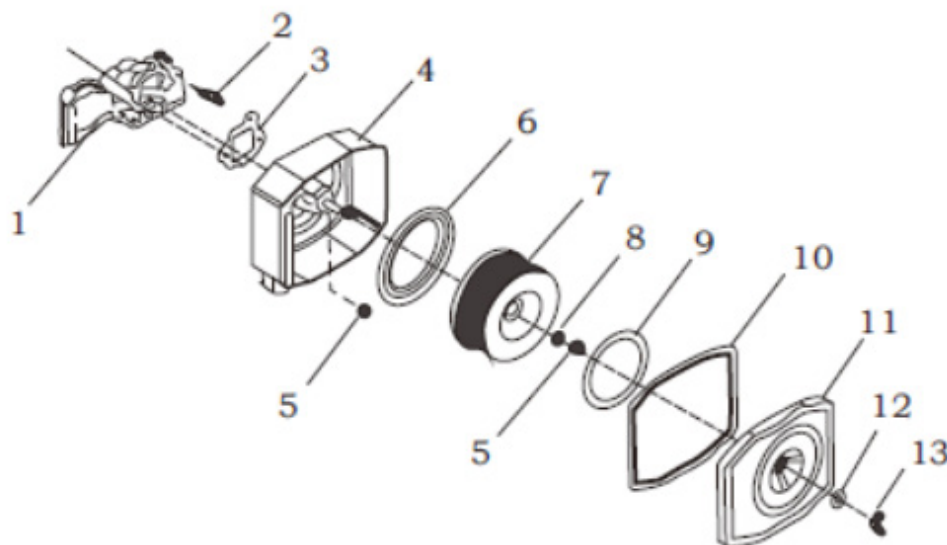
SL NO	PART NO	DESCRIPTION	SL NO	PART NO	DESCRIPTION
1	AM-178FDM-E01	Ball Bearing	17	AM-178FDM-E17	Flywheel Nut
2	AM-178FDM-E02	Balance Shaft	18	AM-178FDM-E18	Starting Ratchet Reel
3	AM-178FDM-E03	Key	19	AM-178FDM-E19	Bolt
4	AM-178FDM-E04	Timing Gear of Balance Shaft			
5	AM-178FDM-E05	Output End Set Bolt			
6	AM-178FDM-E06	Gasket			
7	AM-178FDM-E07	Gasket			
8	AM-178FDM-E08	Grankshaft Timing Gear			
9	AM-178FDM-E09	Key			
10	AM-178FDM-E10	Crankshaft			
11	AM-178FDM-E11	Steel Ball			
12	AM-178FDM-E12	Key			
13	AM-178FDM-E13	Drive Gear of Balance Shaft			
14	AM-178FDM-E14	Flywheel			
15	AM-178FDM-E15	Flywheel teeth			
16	AM-178FDM-E16	Flywhteel Nut Gasket			

Camshaft Assembly - F



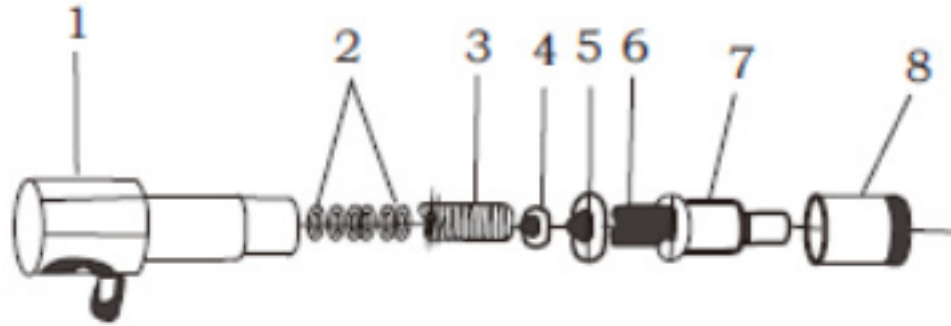
SL NO	PART NO	DESCRIPTION	SL NO	PART NO	DESCRIPTION
1	AM-178FDM-F01	Valve Push Rod Assem			
2	AM-178FDM-F02	Valve Tappet			
3	AM-178FDM-F03	Camshaft Timing Gear			
4	AM-178FDM-F04	Key			
5	AM-178FDM-F05	Camshaft			

Air Intake Assem. - G



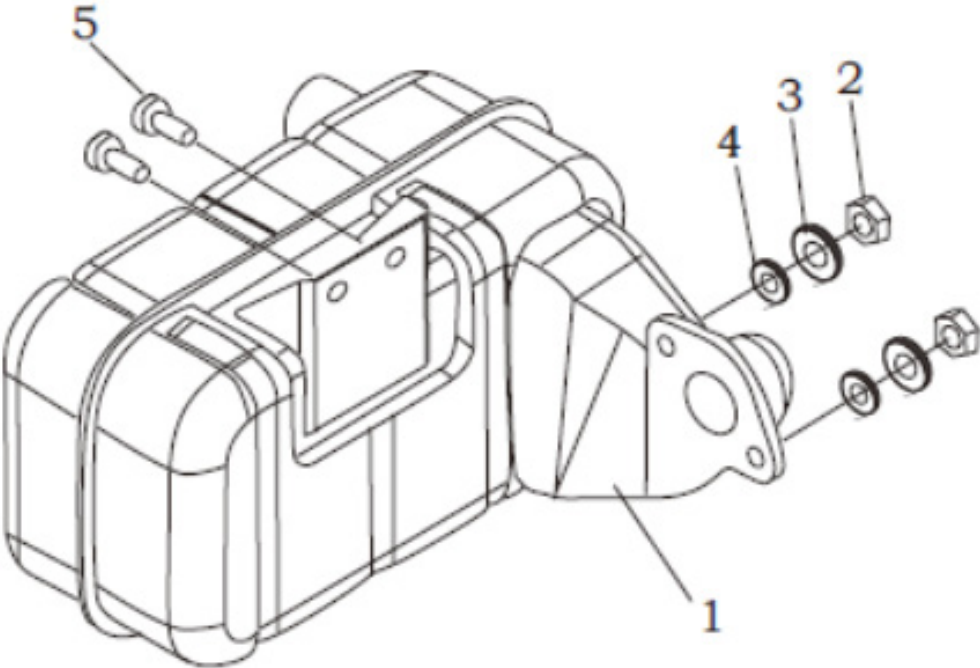
SL NO	PART NO	DESCRIPTION
1	AM-178FDM-G01	Inlet Pipe
2	AM-178FDM-G02	Tightening bolt of air chener
3	AM-178FDM-G03	Air Cleaner Washer
4	AM-178FDM-G04	Air Cleaner Bottom Case Assem.
5	AM-178FDM-G05	Nut
6	AM-178FDM-G06	Shockproof Sheet Gasket II
7	AM-178FDM-G07	Air Cleaner Element Assem.
8	AM-178FDM-G08	Shockproof Unit
9	AM-178FDM-G09	Shockproof Sheet Gasket I
10	AM-178FDM-G10	Sheet Gasket
11	AM-178FDM-G11	Air Cleaner Cover
12	AM-178FDM-G12	Shockproof Seal Assem
13	AM-178FDM-G13	Nut

Fuel Injection Valve Assembly - H



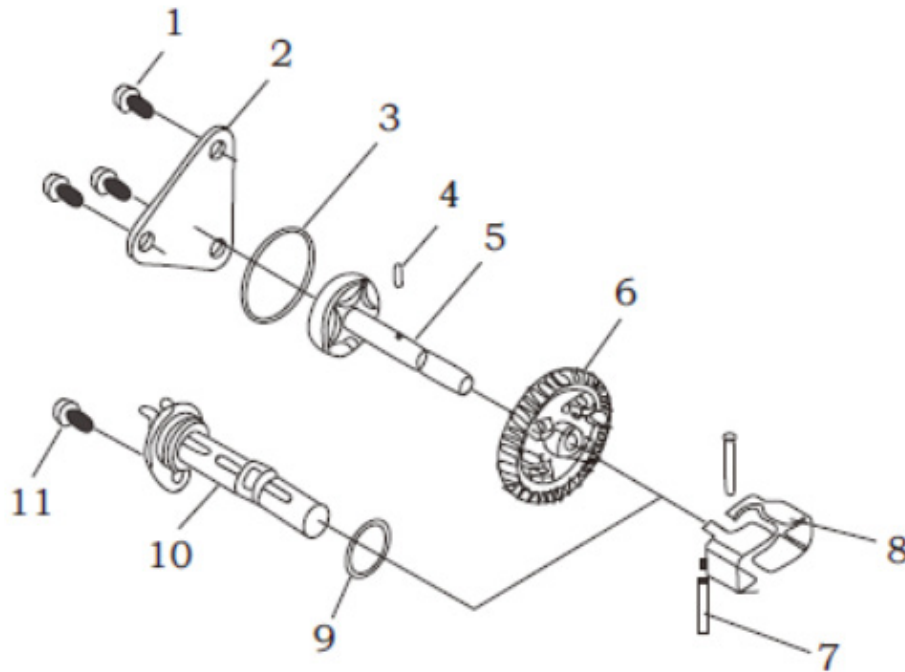
SL NO	PART NO	DESCRIPTION
1	AM-178FDM-H01	Fuel Injection Valve Block
2	AM-178FDM-H02	Washer
3	AM-178FDM-H03	Volt-adjustment Spring
4	AM-178FDM-H04	Mandril
5	AM-178FDM-H05	Intermediate Block
6	AM-178FDM-H06	Locating Pin
7	AM-178FDM-H07	Nozzle
8	AM-178FDM-H08	Nozzle Forcing Nut

Muffler Assem - J



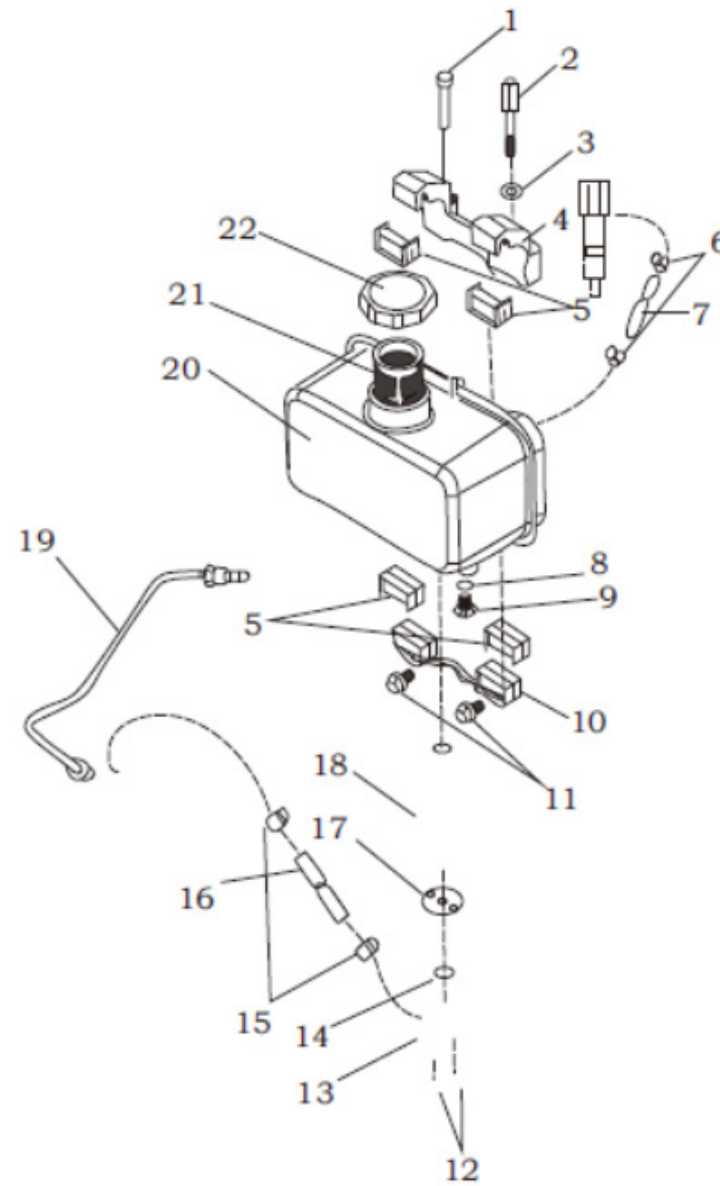
SL NO	PART NO	DESCRIPTION	SL NO	PART NO	DESCRIPTION
1	AM-178FDM-J01	Muffler Assem.			
2	AM-178FDM-J02	Nut			
3	AM-178FDM-J03	Gasket			
4	AM-178FDM-J04	Spring Gasket			
5	AM-178FDM-J05	Bolt			

Lubricating system -K



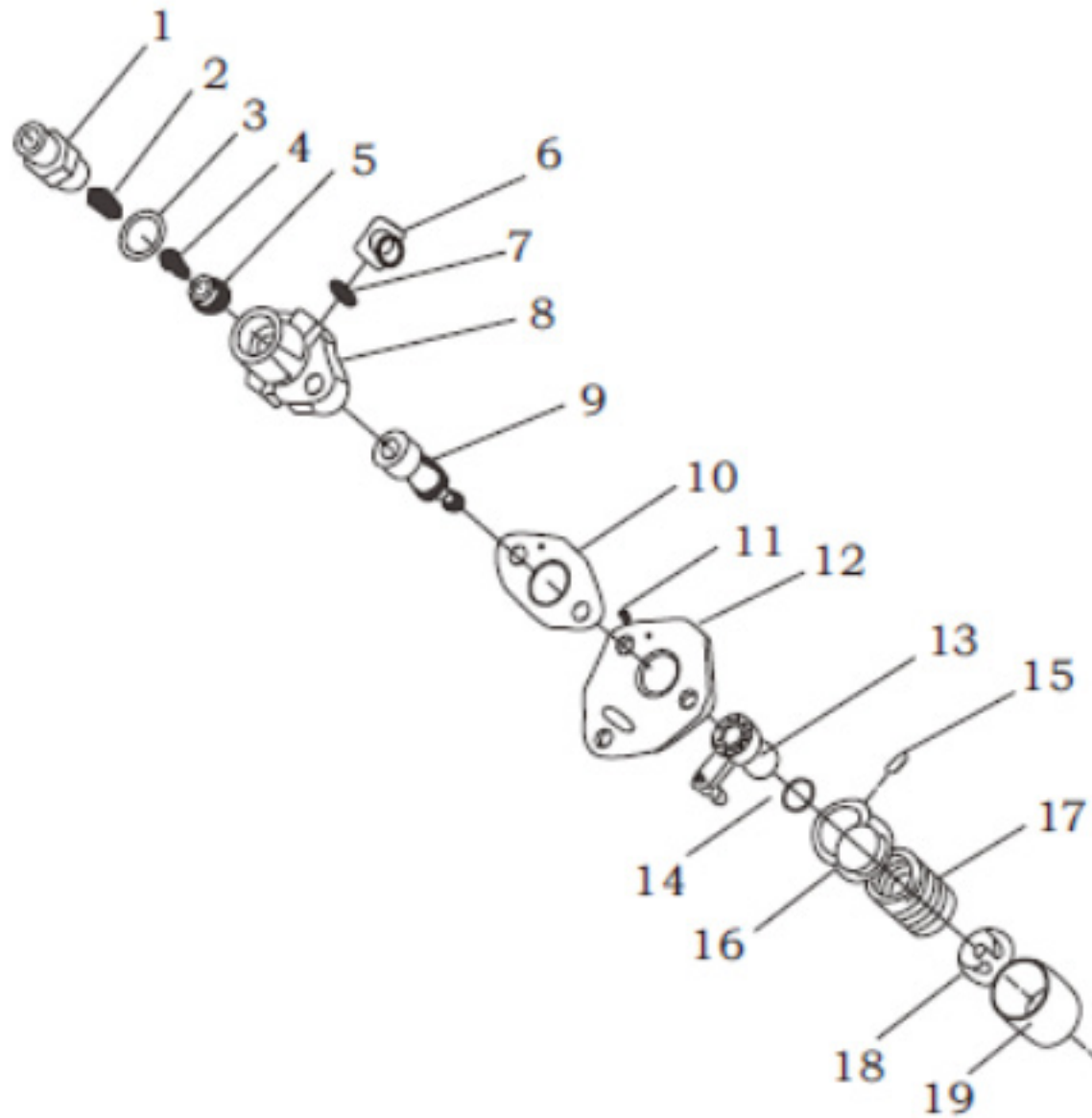
SL NO	PART NO	DESCRIPTION
1	AM-178FDM-K01	Bolt
2	AM-178FDM-K02	Lube Oil Pump Cover
3	AM-178FDM-K03	O-Ring
4	AM-178FDM-K04	Pin
5	AM-178FDM-K05	Engine Oil Pump unit)
6	AM-178FDM-K06	Drive Gear of Lube Oil Pump
7	AM-178FDM-K07	Flying Weight
8	AM-178FDM-K08	Flying Weight Pin
9	AM-178FDM-K09	O-ring
10	AM-178FDM-K10	Lube Oil Cleaner Unit
11	AM-178FDM-K11	Bolt

FuelSystem Assembly - L



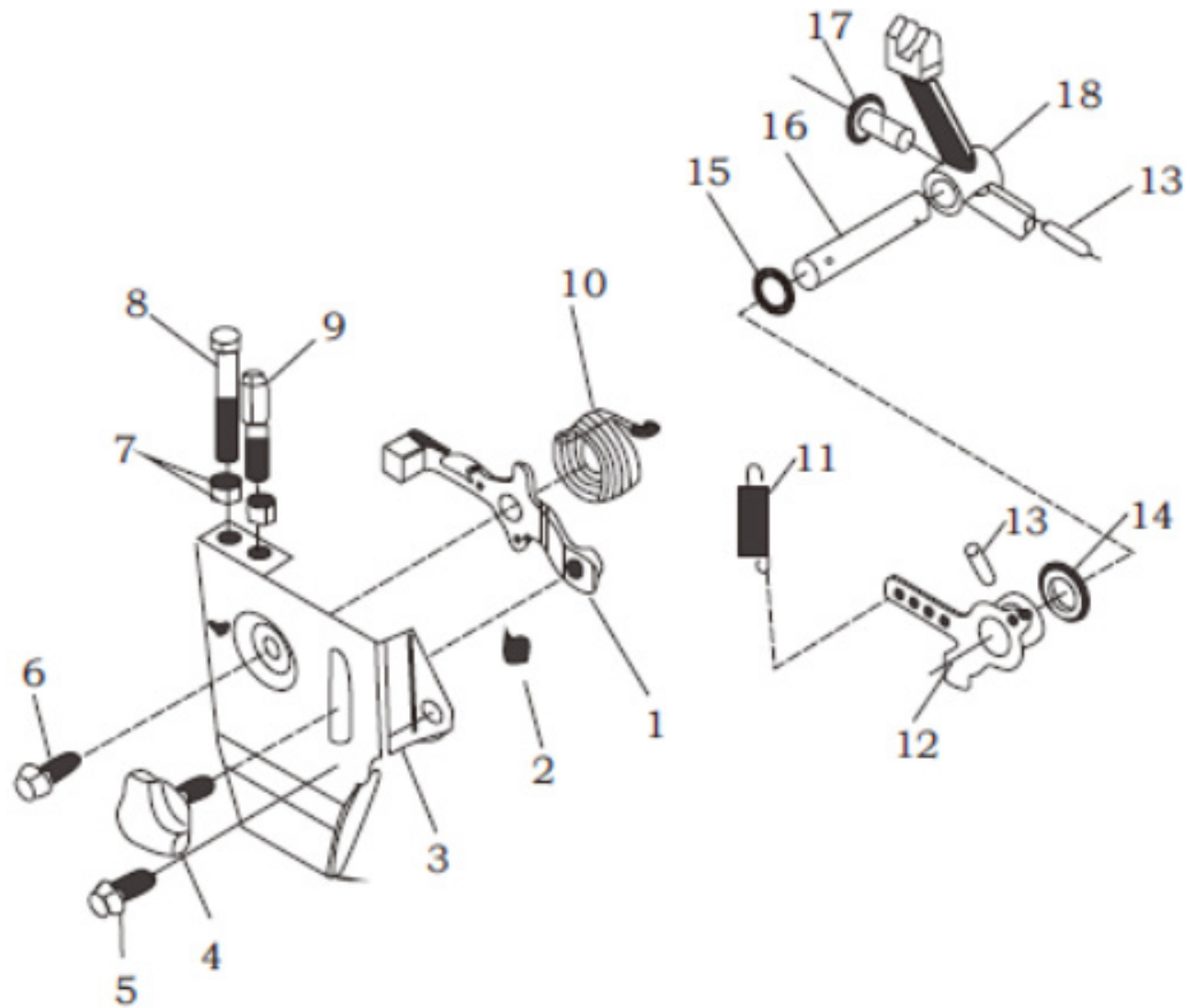
SL NO	PART NO	DESCRIPTION	SL NO	PART NO	DESCRIPTION
1	AM-178FDM-L01	Bolt	17	AM-178FDM-L17	Fuel Filter Washer
2	AM-178FDM-L02	Set Bolt of Fuel Tank Upper Support	18	AM-178FDM-L18	Element Assem
3	AM-178FDM-L03	Gasket8	19	AM-178FDM-L19	High-pressure Fuel Pipe Unit
4	AM-178FDM-L04	Fuel Tank Upper Support	20	AM-178FDM-L20	Fuel Tank Weldment Assem
5	AM-178FDM-L05	Cushion	21	AM-178FDM-L21	Fuel Filler Screen
6	AM-178FDM-L06	Fuel Return Pipe	22	AM-178FDM-L22	Fuel Tank Cap
7	AM-178FDM-L07	Fuel Return Pipe Clip			
8	AM-178FDM-L08	Drain Bolt Washer			
9	AM-178FDM-L09	Bolt			
10	AM-178FDM-L10	Fuel Tank Lower Support			
11	AM-178FDM-L11	Bolt			
12	AM-178FDM-L12	Nut			
13	AM-178FDM-L13	Fuel Tank Switch Assem			
14	AM-178FDM-L14	O-Ring			
15	AM-178FDM-L15	Clip I			
16	AM-178FDM-L16	Fuel Pipe			

Fuel Injection Pump Assembly - M



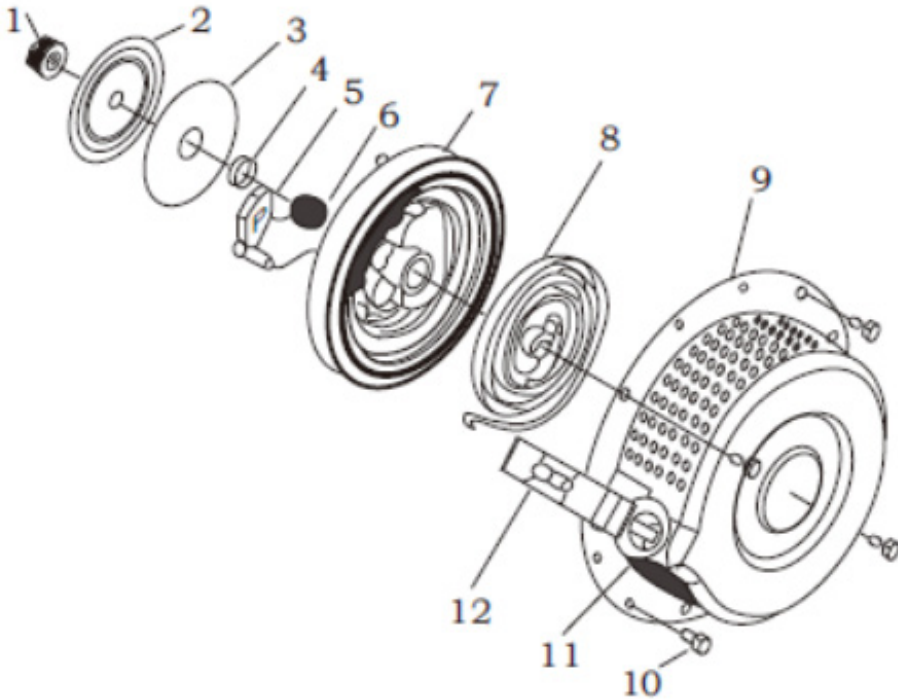
SL NO	PART NO	DESCRIPTION	SL NO	PART NO	DESCRIPTION
1	AM-178FDM-M01	Fuel Delivery Valve Forcing Holder	17	AM-178FDM-M17	Spring
2	AM-178FDM-M02	Fuel Delivery Valve Spring	18	AM-178FDM-M18	Spring Holder
3	AM-178FDM-M03	Fuel Delivery Valve Sheet Gasket	19	AM-178FDM-M19	Tappet
4	AM-178FDM-M04	Fuel Delivery Valve Core			
5	AM-178FDM-M05	Fuel Delivery Valve Seat			
6	AM-178FDM-M06	Fuel Pipe Weldment Assem.			
7	AM-178FDM-M07	O-Ring			
8	AM-178FDM-M08	FIP Block			
9	AM-178FDM-M09	Plunger			
10	AM-178FDM-M10	Washer			
11	AM-178FDM-M11	Pin			
12	AM-178FDM-M12	FIP connecting plate			
13	AM-178FDM-M13	Fuel Limiting sheath weldment assy			
14	AM-178FDM-M14	Steel Clip			
15	AM-178FDM-M15	Pin			
16	AM-178FDM-M16	Support			

Governor & Control System - N



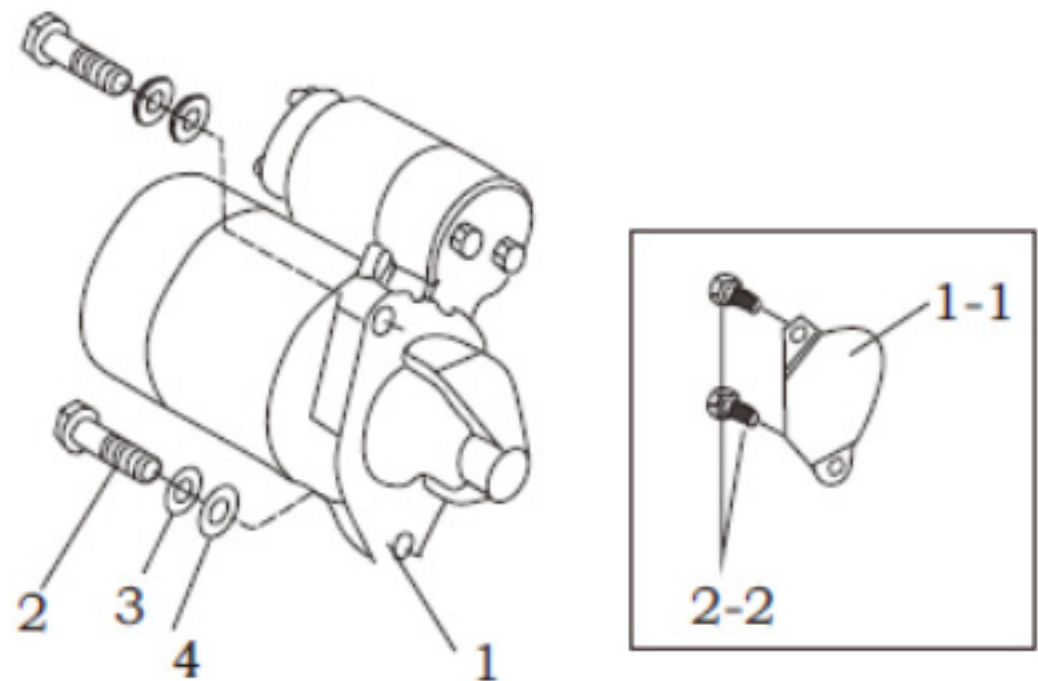
SL NO	PART NO	DESCRIPTION	SL NO	PART NO	DESCRIPTION
1	AM-178FDM-N01	Control Handle	17	AM-178FDM-N17	Governor Push Reel
2	AM-178FDM-N02	Return Spring II	18	AM-178FDM-N18	Fork
3	AM-178FDM-N03	Control Handle Support			
4	AM-178FDM-N04	Handle			
5	AM-178FDM-N05	BoltM6 x 14			
6	AM-178FDM-N06	BoltM6 x 18			
7	AM-178FDM-N07	NutM6			
8	AM-178FDM-N08	Pull Bolt			
9	AM-178FDM-N09	High Speed Limit Screw			
10	AM-178FDM-N10	Return Spring I			
11	AM-178FDM-N11	Governor Spring			
12	AM-178FDM-N12	Governor Lever Weldment Assem.			
13	AM-178FDM-N13	Pin3 x 22			
14	AM-178FDM-N14	Gasket			
15	AM-178FDM-N15	Lever Shaft Oil Seal			
16	AM-178FDM-N16	Lever Shaft			

Recoil Starter Assembly - P



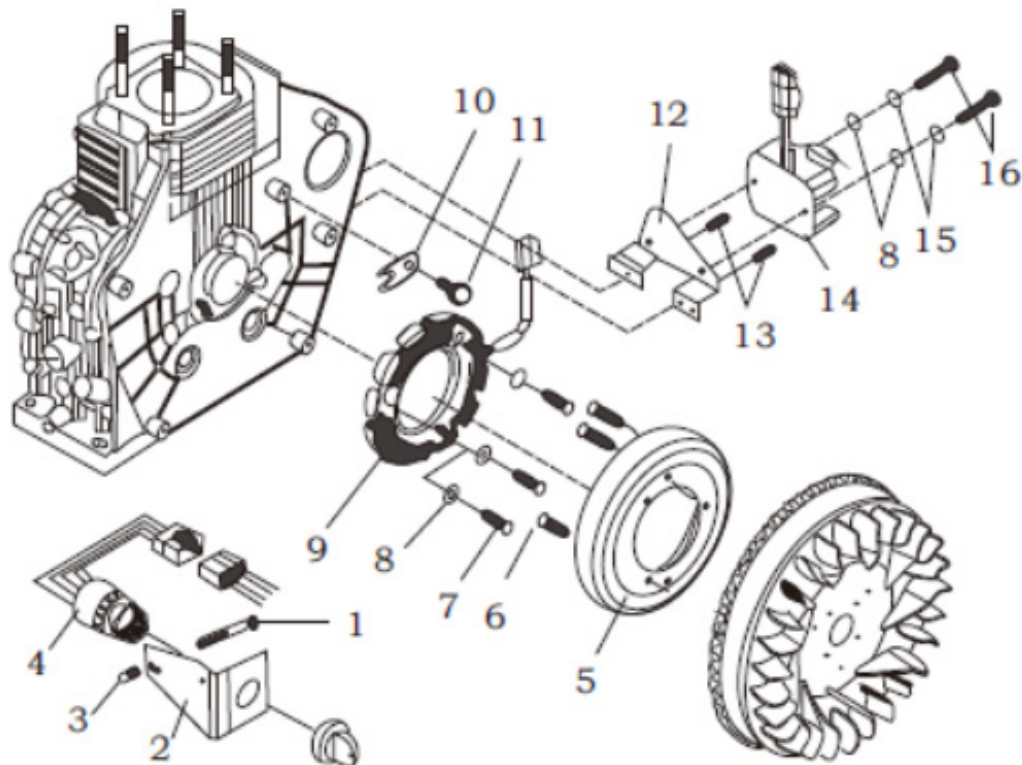
SL NO	PART NO	DESCRIPTION
1	AM-178FDM-P01	Nut M8
2	AM-178FDM-P02	Friction Reel
3	AM-178FDM-P03	Friction Plate
4	AM-178FDM-P04	Spring Cover
5	AM-178FDM-P05	Ratchet
6	AM-178FDM-P06	Return Spring
7	AM-178FDM-P07	Starter Reel
8	AM-178FDM-P08	Spiral Spring
9	AM-178FDM-P09	Outer Case Assem
10	AM-178FDM-P10	Bolt M6 x 8
11	AM-178FDM-P11	Starter Rope
12	AM-178FDM-P12	Starter Handle

Starting Motor Assem - Q



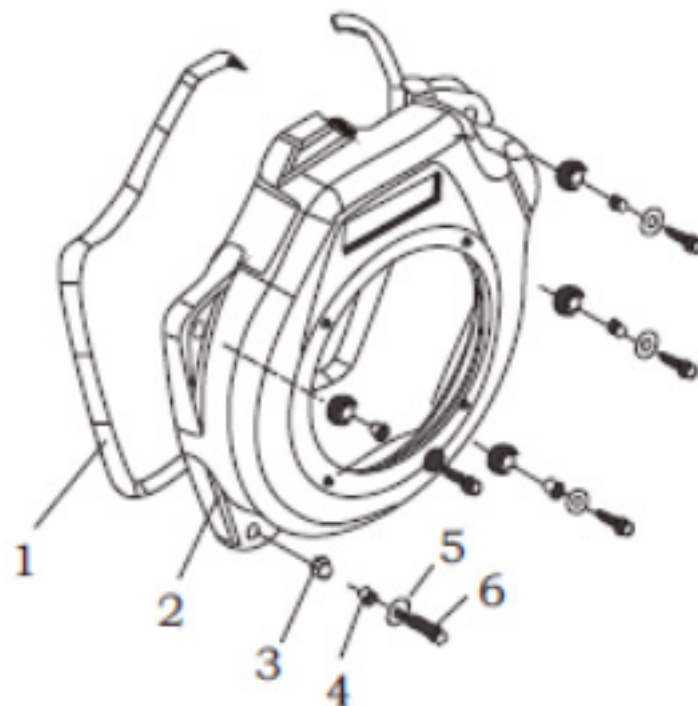
SL NO	PART NO	DESCRIPTION	SL NO	PART NO	DESCRIPTION
1	AM-178FDM-Q01	Starting Motor Assem.			
1.1	AM-178FDM-Q1.1	Engine motor hole cover board			
2	AM-178FDM-Q02	Bolt			
2.2	AM-178FDM-Q2.2	Bolt			
3	AM-178FDM-Q3	Spring Gasket			
4	AM-178FDM-Q4	Gasket			

Flywheel Alternator Assem - R



SL NO	PART NO	DESCRIPTION
1	AM-178FDM-R01	Bolt
2	AM-178FDM-R02	Switch Board of Electric Starter
3	AM-178FDM-R03	Long Gasket
4	AM-178FDM-R04	Starting Key Assem
5	AM-178FDM-R05	Rotator Assem
6	AM-178FDM-R06	Screw
7	AM-178FDM-R07	Bolt
8	AM-178FDM-R08	Gasket
9	AM-178FDM-R09	Stator Assem
10	AM-178FDM-R10	Retainer
11	AM-178FDM-R11	Screw
12	AM-178FDM-R12	Support of Governor
13	AM-178FDM-R13	Screw
14	AM-178FDM-R14	Volt Regulator Assem
15	AM-178FDM-R15	Gasket
16	AM-178FDM-R16	Bolt

Fan Cover Assem - S



SL NO	PART NO	DESCRIPTION	SL NO	PART NO	DESCRIPTION
1	AM-178FDM-S01	Cushion			
2	AM-178FDM-S02	Fan Cover Weldment Assem			
3	AM-178FDM-S03	Cushion Sheath			
4	AM-178FDM-S04	Sheath			
5	AM-178FDM-S05	Gasket			
6	AM-178FDM-S06	Bolt			

WARRANTY CARD

CUSTOMER COPY

DATE _____	DATE OF DELIVERY _____	DEALERS OFFICIAL SEAL _____	DEALERS SIGN _____
PURCHASERS NAME & ADDRESS _____ _____ _____	<div>CUSTOMER SIGN</div>	<div></div>	
PRODUCT NAME	PRODUCT SERIAL NO.	INVOICE/DN NO.	
<div></div>	<div></div>	<div></div>	
I/Will accept the terms and conditions of warranty as in the warranty card			

DEALERS COPY

DATE _____	DATE OF DELIVERY _____	DEALERS OFFICIAL SEAL _____	DEALERS SIGN _____
PURCHASERS NAME & ADDRESS _____ _____ _____	<div>CUSTOMER SIGN</div>	<div></div>	
PRODUCT NAME	PRODUCT SERIAL NO.	INVOICE/DN NO.	
<div></div>	<div></div>	<div></div>	
I/Will accept the terms and conditions of warranty as in the warranty card			

COMPANY COPY

DATE _____	DATE OF DELIVERY _____	DEALERS OFFICIAL SEAL _____	DEALERS SIGN _____
PURCHASERS NAME & ADDRESS _____ _____ _____	<div>CUSTOMER SIGN</div>	<div></div>	
PRODUCT NAME	PRODUCT SERIAL NO.	INVOICE/DN NO.	
<div></div>	<div></div>	<div></div>	
I/Will accept the terms and conditions of warranty as in the warranty card			

1. LIMITED WARRANTY PERIOD : For a period of six months from the date of Sale / delivery of the product which ever is earlier. 2. LIMITED WARRANTY OBLIGATION : Replacement of defective part(s) by authorized dealer are free of charges. If found defective by reasons of defective material / poor workmanship, parts will be replaced and there will be no value re-imbursement. 3. TERMS & CONDITIONS : a. Claims under warranty will be accepted on submission of Warranty Card duly filled and stamped by authorized dealer together with the original purchase document. : b. Shipping / transportation / Incidental charges incurred in replacing defective parts under warranty shall be borne by the purchaser

WARRANTY null & void if
(i) Lack of maintenance, (ii) Incorrect use of the machine or tampering, (iii) Use of non-genuine spare parts, (iv) Usage of acids, solvents, or any flammable materials, (v) Non-usage of filter water / clear water / soft water & using water above 40°C temperature, (vi) While using the pressure washers to draw water which is contaminated with dust & solvents (eg. paint thinners, gasoline, oil, etc.), (vii) Repair done by unauthorized service people, (viii) Those parts subject to wear & tear due to normal operations and plastic parts, rubber items etc, (ix) Loose connections, faulty electrical fixtures & fluctuations in power supply.
4. Should any failure occur during or after the warranty period, customer does not have the right to interrupt payment / price discount.
5. Incidental or consequential damages like inconvenience commercial loss, loss of tie, mental agony etc.
6. Loss of any nature due to operation or non-operation is not covered under warranty.
7. All free service are at Dealer's service point only.
8. Warranty ceases if service is not done periodically.
9. The attached card should be completed and returned to Ratnagiri Impex Pvt. Ltd. for registration immediately after sale / delivery.
10. The warranty is void unless you register the warranty card with Ratnagiri Impex Pvt. Ltd.
11. The decision of Ratnagiri Impex Pvt. Ltd., in settling the warranty is final in all respects.
12. All disputes are subject to Bangalore Courts Jurisdiction

1. LIMITED WARRANTY PERIOD : For a period of six months from the date of Sale / delivery of the product which ever is earlier. 2. LIMITED WARRANTY OBLIGATION : Replacement of defective part(s) by authorized dealer are free of charges. If found defective by reasons of defective material / poor workmanship, parts will be replaced and there will be no value re-imbursement. 3. TERMS & CONDITIONS : a. Claims under warranty will be accepted on submission of Warranty Card duly filled and stamped by authorized dealer together with the original purchase document. : b. Shipping / transportation / Incidental charges incurred in replacing defective parts under warranty shall be borne by the purchaser.

WARRANTY null & void if
(i) Lack of maintenance, (ii) Incorrect use of the machine or tampering, (iii) Use of non-genuine spare parts, (iv) Usage of acids, solvents, or any flammable materials, (v) Non-usage of filter water / clear water / soft water & using water above 40°C temperature, (vi) While using the pressure washers to draw water which is contaminated with dust & solvents (eg. paint thinners, gasoline, oil, etc.), (vii) Repair done by unauthorized service people, (viii) Those parts subject to wear & tear due to normal operations and plastic parts, rubber items etc, (ix) Loose connections, faulty electrical fixtures & fluctuations in power supply.
4. Should any failure occur during or after the warranty period, customer does not have the right to interrupt payment / price discount.
5. Incidental or consequential damages like inconvenience commercial loss, loss of tie, mental agony etc.
6. Loss of any nature due to operation or non-operation is not covered under warranty.
7. All free service are at Dealer's service point only.
8. Warranty ceases if service is not done periodically.
9. The attached card should be completed and returned to Ratnagiri Impex Pvt. Ltd. for registration immediately after sale / delivery.
10. The warranty is void unless you register the warranty card with Ratnagiri Impex Pvt. Ltd.
11. The decision of Ratnagiri Impex Pvt. Ltd., in settling the warranty is final in all respects.
12. All disputes are subject to Bangalore Courts Jurisdiction

1. LIMITED WARRANTY PERIOD : For a period of six months from the date of Sale / delivery of the product which ever is earlier. 2. LIMITED WARRANTY OBLIGATION : Replacement of defective part(s) by authorized dealer are free of charges. If found defective by reasons of defective material / poor workmanship, parts will be replaced and there will be no value re-imbursement. 3. TERMS & CONDITIONS : a. Claims under warranty will be accepted on submission of Warranty Card duly filled and stamped by authorized dealer together with the original purchase document. : b. Shipping / transportation / Incidental charges incurred in replacing defective parts under warranty shall be borne by the purchaser.

WARRANTY null & void if
(i) Lack of maintenance, (ii) Incorrect use of the machine or tampering, (iii) Use of non-genuine spare parts, (iv) Usage of acids, solvents, or any flammable materials, (v) Non-usage of filter water / clear water / soft water & using water above 40°C temperature, (vi) While using the pressure washers to draw water which is contaminated with dust & solvents (eg. paint thinners, gasoline, oil, etc.), (vii) Repair done by unauthorized service people, (viii) Those parts subject to wear & tear due to normal operations and plastic parts, rubber items etc, (ix) Loose connections, faulty electrical fixtures & fluctuations in power supply.
4. Should any failure occur during or after the warranty period, customer does not have the right to interrupt payment / price discount.
5. Incidental or consequential damages like inconvenience commercial loss, loss of tie, mental agony etc.
6. Loss of any nature due to operation or non-operation is not covered under warranty.
7. All free service are at Dealer's service point only.
8. Warranty ceases if service is not done periodically.
9. The attached card should be completed and returned to Ratnagiri Impex Pvt. Ltd. for registration immediately after sale / delivery.
10. The warranty is void unless you register the warranty card with Ratnagiri Impex Pvt. Ltd.
11. The decision of Ratnagiri Impex Pvt. Ltd., in settling the warranty is final in all respects.
12. All disputes are subject to Bangalore Courts Jurisdiction

**FREE SERVICE COUPON (30DAYS/30HRS. WHICHEVER IS EARLIER)**

MODEL

SERIAL NUMBER

PDI DATE

SERVICE NO.

PURCHASE BILL NO.

DATE

DEALERS OFFICE SEAL

OPERATIONS

1. Check and test the fuel mixture
3. Check , clean and adjust the spark plug
5. Check and sparken the cutting tools
7. Start and check the noise, vibration, loosen etc..

2. check and clean the air filter
4. Check and adjust the carburetor tuning
6. Product familiarisation on usage
8. Routine maintenance and shortage.

FREE SERVICE COUPON (30DAYS/30HRS. WHICHEVER IS EARLIER)

MODEL

SERIAL NUMBER

PDI DATE

SERVICE NO.

PURCHASE BILL NO.

DATE

DEALERS OFFICE SEAL

OPERATIONS

1. Check and test the fuel mixture
3. Check , clean and adjust the spark plug
5. Check and sparken the cutting tools
7. Start and check the noise, vibration, loosen etc..

2. check and clean the air filter
4. Check and adjust the carburetor tuning
6. Product familiarisation on usage
8. Routine maintenance and shortage.

FREE SERVICE COUPON (30DAYS/30HRS. WHICHEVER IS EARLIER)

MODEL

SERIAL NUMBER

PDI DATE

SERVICE NO.

PURCHASE BILL NO.

DATE

DEALERS OFFICE SEAL

OPERATIONS

1. Check and test the fuel mixture
3. Check , clean and adjust the spark plug
5. Check and sparken the cutting tools
7. Start and check the noise, vibration, loosen etc..

2. check and clean the air filter
4. Check and adjust the carburetor tuning
6. Product familiarisation on usage
8. Routine maintenance and shortage.

DOS & DONTs

attempting to use the equipments.

1. Always read the instruction manual supplied along with the equipments and understand the correct installation and operating procedures before

trousers and jackets while operating potentially dangerous machines
2. It is important to use the personal protection equipments such as head helmet with visor, ear defenders, goggles, safety gloves, cut resistant shoes,
3. Avoid untrained persons using the equipments. Children must not be allowed to handle these equipments
4. Always use genuine spares and accessories in repairs and usage to derive maximum life of the equipments.
5. Always keep the equipments in good working condition to minimize loss of output as well as to reduce the pollution and save the environment
6. Do not use the machine within range of persons unless they wear protective clothing
7. Do not operate the machine when fatigued or under the influence of alcohol or drugs
8. For more query kindly contact for our Service Center/Dealer/ franchise

NO. 1 CHOICE OF FARMERS SINCE 1999



RATNAGIRI IMPEX PVT., LTD.,

Annapurna House, #1 / 1G, 7th Cross, New
Guddadahalli

Mysore Road, Bangalore - 560 026

Missed Call : 7393 938 938

Email: ask@agrimart.in