

USER MANUAL



INTERCULTIVATOR/POWER WEEDER

AM-MPT-1100-9D-3G

USER MANUAL



INTRODUCTION

Please peruse the contents in the instructions manual prior to using this machine, correctly carried out installation and debugging, as well as use it strictly according to the working specifications in the instruction manual. The user should be familiar with the safety notices, machine performance and maintenance, etc. The instruction manual will be used in the later use, repair, accessories replacement, and accessories procurement, so please keep it carefully.

OPERATING INSTRUCTION

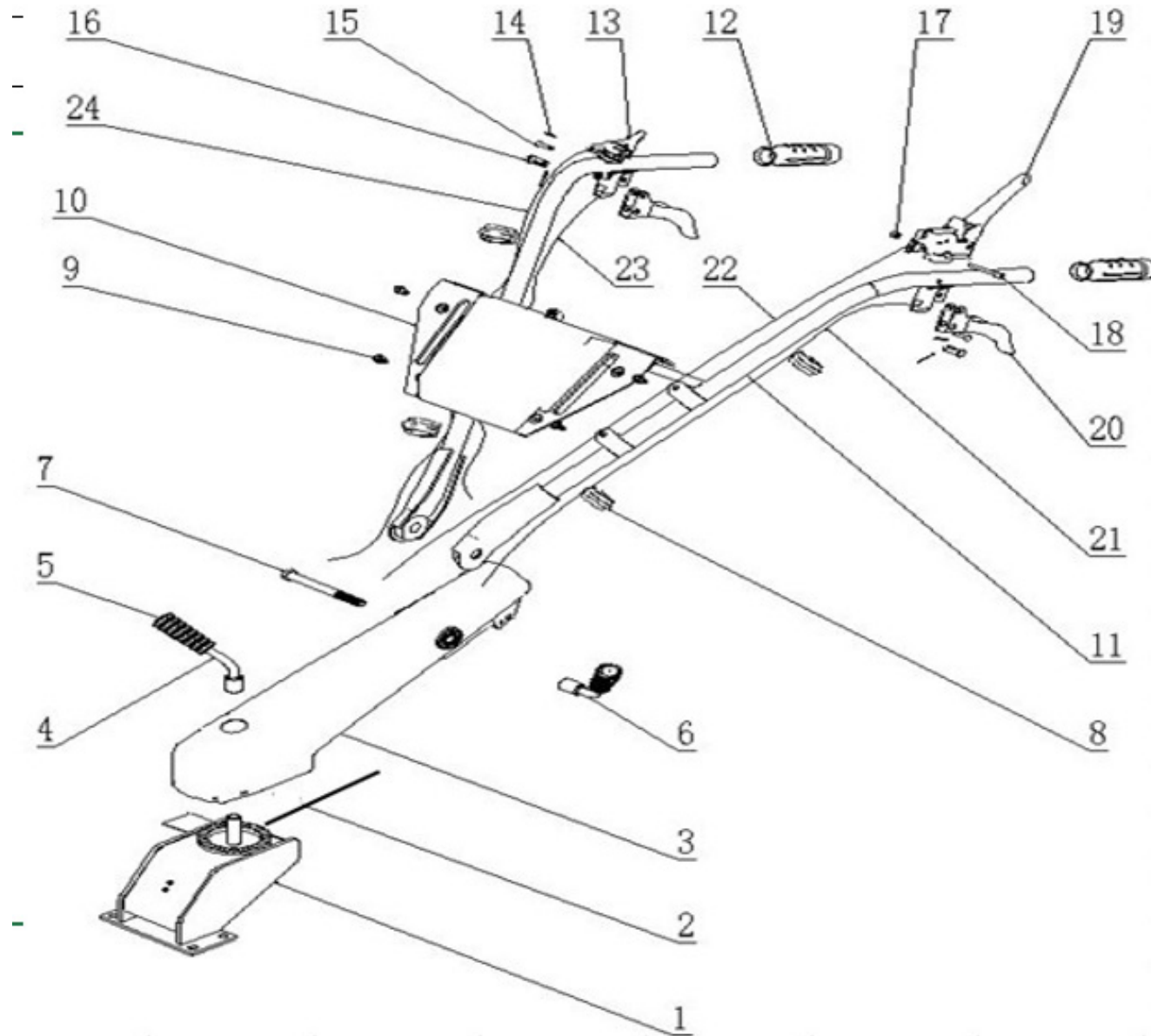
1. Securely mount the machine on the frame, ensure the two belt pulleys be parallel and on the same plane, and the tension of belt be moderate.
2. Add 30~ 40# machine oil up to 1/2 of oil gauge plug
3. The connectors of each rubber pipe and high pressure pipe must be locked tightly.
4. Before start the motor, open the jet gun and ball cock and loosen the adjusting screw
5. Start the motor, keeping it at appropriate velocity, waiting there is water ejecting from the jet gun, close the jet gun or ball cock, and adjust screw to let the pressure reach the working pressure.
6. Turn on the ball cock and jet gun, beginning spraying. During the process may properly adjust the adjusting screw to maintain the required pressure and lock tightly the fly nut at any moment.
7. After spraying, operate the sprayer with clean water for 2`3 minutes to clean the residual interior chemicals.
8. Firstly dismantle the suction hose, waiting there is no water flowing out from the jet gun or the overflow hose, stop the machine and dismantle overflow hose, high pressure pipe and loosen the adjusting screw.

TECHNICAL SPECIFICATIONS

Model	AM-MPTC-1100-9D-E-3G
Engine	AM-186FA DIESEL
Starting	MANUAL
Displacement	418CC/296CC
Fuel Tank Capacity	5.5LTR./3.5LTR
Driving Model	GEAR TRANSMISSION
Oil Capacity in Gear box	2.2LTR./
Gears	2 FORWARD,1 REVERSE
Tilling Width	1350MM/1050MM
Tilling Depth	≥150MM
Net Weight	162 KG/128KG

TRANSMISSION DIAGRAM & PART LIST OF INTERCULTIVATOR/POWER WEEDER

ARMREST ASSY - A

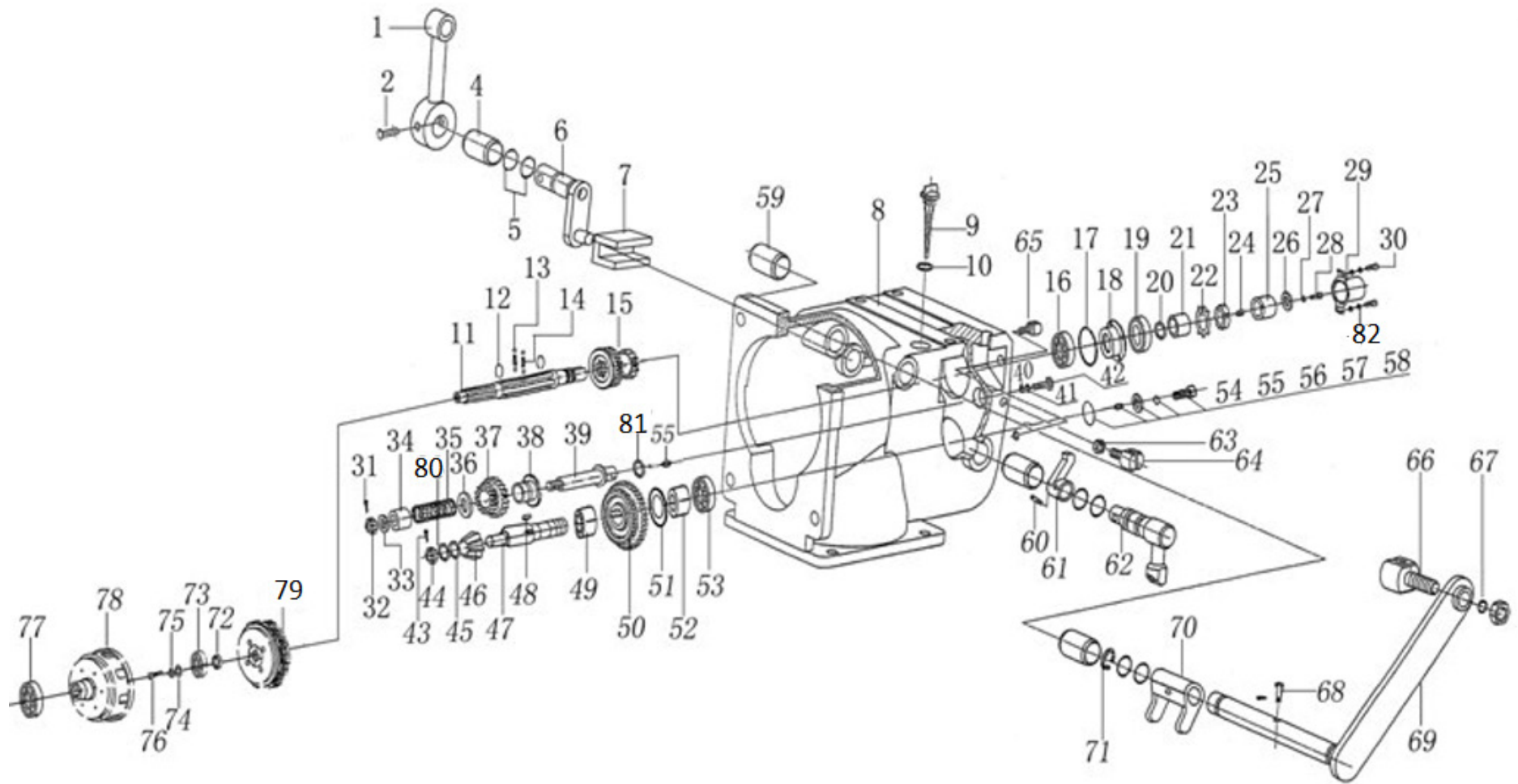


TRANSMISSION DIAGRAM & PART LIST OF INTERCULTIVATOR/POWER WEEDER

SL NO	PART NO	DESCRIPTION	SL NO	PART NO	DESCRIPTION
1	AM-MPTC-1100-9D-3G-TA01	Handle Seat	17	AM-MPTC-1100-9D-3G-TA17	Screw
2	AM-MPTC-1100-9D-3G-TA02	Gear Shifting Level	18	AM-MPTC-1100-9D-3G-TA18	Nut
3	AM-MPTC-1100-9D-3G-TA03	Handle Middle Part	19	AM-MPTC-1100-9D-3G-TA19	Shut Down Bar
4	AM-MPTC-1100-9D-3G-TA04	Locking Bar	20	AM-MPTC-1100-9D-3G-TA20	Clutch Handle
5	AM-MPTC-1100-9D-3G-TA05	Locking Bar Cover	21	AM-MPTC-1100-9D-3G-TA21	Clutch Cable
6	AM-MPTC-1100-9D-3G-TA06	Locking Bar	22	AM-MPTC-1100-9D-3G-TA22	Shut Down Cable
7	AM-MPTC-1100-9D-3G-TA07	Bolt	23	AM-MPTC-1100-9D-3G-TA23	Reverse Cable
8	AM-MPTC-1100-9D-3G-TA08	Cable Holder	24	AM-MPTC-1100-9D-3G-TA24	Fuel Cable
9	AM-MPTC-1100-9D-3G-TA09	Hex Bolt	25		
10	AM-MPTC-1100-9D-3G-TA10	Tool Box	26		
11	AM-MPTC-1100-9D-3G-TA11	Handle Bar	27		
12	AM-MPTC-1100-9D-3G-TA12	Grip	28		
13	AM-MPTC-1100-9D-3G-TA13	Fuel Switch	29		
14	AM-MPTC-1100-9D-3G-TA14	Split Pin	30		
15	AM-MPTC-1100-9D-3G-TA15	Calble Connector	31		
16	AM-MPTC-1100-9D-3G-TA16	Pin	32		

TRANSMISSION DIAGRAM & PART LIST OF INTERCULTIVATOR/POWER WEEDER

TRANSMISSION PARTS - B



TRANSMISSION DIAGRAM & PART LIST OF INTERCULTIVATOR/POWER WEEDER

SL NO	PART NO	DESCRIPTION	SL NO	PART NO	DESCRIPTION
1	AM-MPTC-1100-9D-3G-TB01	Shift Arm	17	AM-MPTC-1100-9D-3G-TB17	Mainshaft Gland
2	AM-MPTC-1100-9D-3G-TB02	Hexagon Bolt	18	AM-MPTC-1100-9D-3G-TB18	Oil Seal
3	AM-MPTC-1100-9D-3G-TB03	Shift Bush	19	AM-MPTC-1100-9D-3G-TB19	O Ring
4	AM-MPTC-1100-9D-3G-TB04	O Ring Seals	20	AM-MPTC-1100-9D-3G-TB20	Spindle Bush
5	AM-MPTC-1100-9D-3G-TB05	Shifting Fork	21	AM-MPTC-1100-9D-3G-TB21	Washer
6	AM-MPTC-1100-9D-3G-TB06	Shifting Fork Block	22	AM-MPTC-1100-9D-3G-TB22	Round Nut
7	AM-MPTC-1100-9D-3G-TB07	Gear Box	23	AM-MPTC-1100-9D-3G-TB23	Flat Key
8	AM-MPTC-1100-9D-3G-TB08	Oil Dipstick	24	AM-MPTC-1100-9D-3G-TB24	Spindle Flat Key
9	AM-MPTC-1100-9D-3G-TB09	Oil Dipstick O Ring	25	AM-MPTC-1100-9D-3G-TB25	Flat Washer
10	AM-MPTC-1100-9D-3G-TB10	Spindle	26	AM-MPTC-1100-9D-3G-TB26	Spring Washer
11	AM-MPTC-1100-9D-3G-TB11	Steel Ring	27	AM-MPTC-1100-9D-3G-TB27	Hexagon Bolt
12	AM-MPTC-1100-9D-3G-TB12	Steel Ball	28	AM-MPTC-1100-9D-3G-TB28	Spindle Protective Cover
13	AM-MPTC-1100-9D-3G-TB13	Locating Spring	29	AM-MPTC-1100-9D-3G-TB29	Hexagonal Bolt
14	AM-MPTC-1100-9D-3G-TB14	Spindle Double Gear	30	AM-MPTC-1100-9D-3G-TB30	Split Pin
15	AM-MPTC-1100-9D-3G-TB15	Bearing	31	AM-MPTC-1100-9D-3G-TB31	Hexagon Slotted Nut
16	AM-MPTC-1100-9D-3G-TB16	O Ring	32	AM-MPTC-1100-9D-3G-TB32	Flat Washer

TRANSMISSION DIAGRAM & PART LIST OF INTERCULTIVATOR/POWER WEEDER

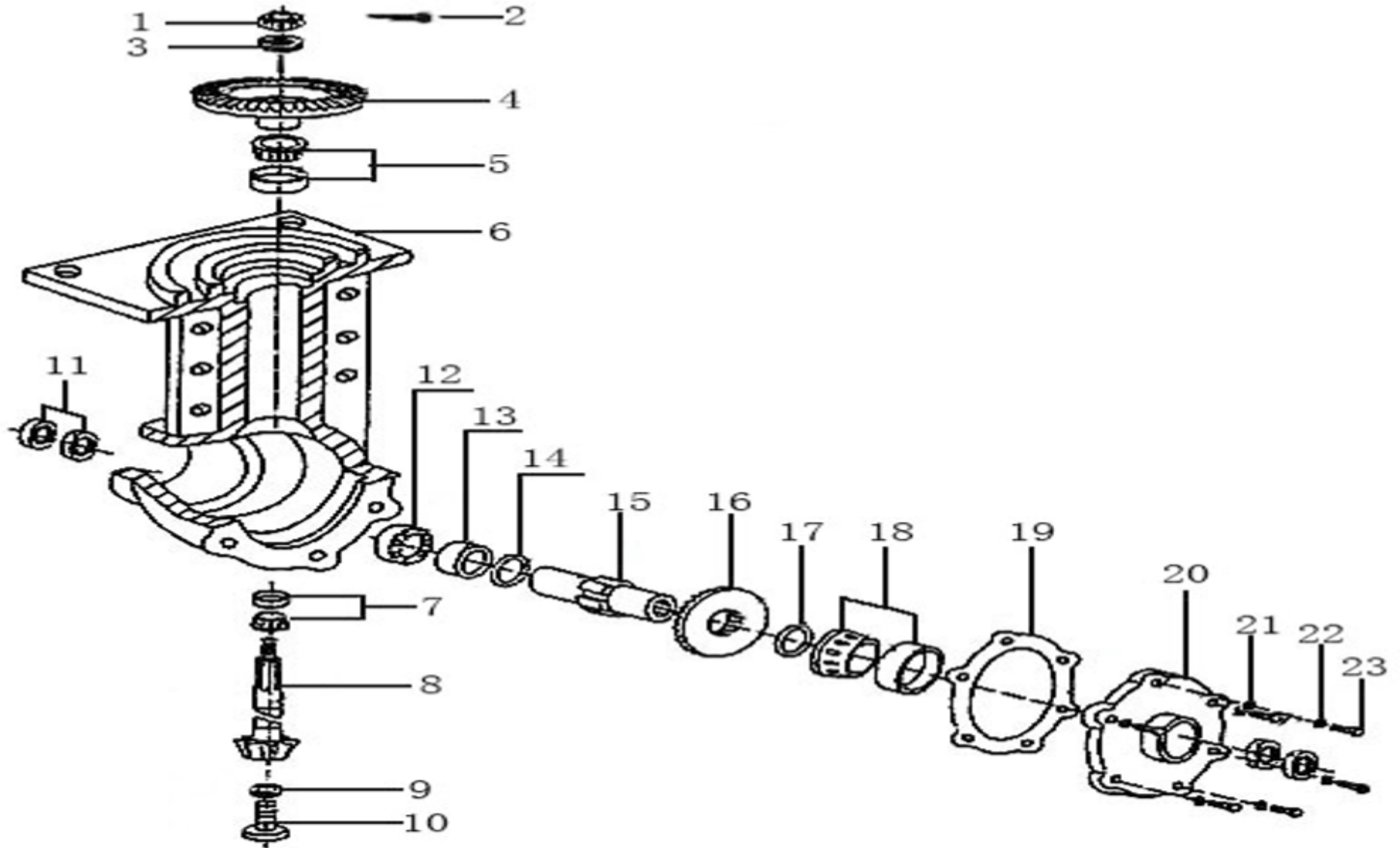
SL NO	PART NO	DESCRIPTION	SL NO	PART NO	DESCRIPTION
33	AM-MPTC-1100-9D-3G-TB33	Reverse Gear Limit Bush	49	AM-MPTC-1100-9D-3G-TB49	Countershaft Adjustable Washer
34	AM-MPTC-1100-9D-3G-TB34	Reverse Spring	50	AM-MPTC-1100-9D-3G-TB50	Countershaft Adjustable Washer
35	AM-MPTC-1100-9D-3G-TB35	Reverse Spring	51	AM-MPTC-1100-9D-3G-TB51	Countershaft Adjustable Washer
36	AM-MPTC-1100-9D-3G-TB36	Reverse Gear Dual Gear	52	AM-MPTC-1100-9D-3G-TB52	Countershaft Sleeve
37	AM-MPTC-1100-9D-3G-TB37	Reverse Gear Plate	53	AM-MPTC-1100-9D-3G-TB53	Bearing
38	AM-MPTC-1100-9D-3G-TB38	Reverse Gear Shaft	54	AM-MPTC-1100-9D-3G-TB54	O Ring
39	AM-MPTC-1100-9D-3G-TB39	Flat Washer	55	AM-MPTC-1100-9D-3G-TB55	Round Pin
40	AM-MPTC-1100-9D-3G-TB40	Spring Washer	56	AM-MPTC-1100-9D-3G-TB56	Flat Washer
41	AM-MPTC-1100-9D-3G-TB41	Bolt	57	AM-MPTC-1100-9D-3G-TB57	Spring Washer
42	AM-MPTC-1100-9D-3G-TB42	Cotter Pin	58	AM-MPTC-1100-9D-3G-TB58	Hexagonal Bolt
43	AM-MPTC-1100-9D-3G-TB43	Hexagon Slotted Nuts	59	AM-MPTC-1100-9D-3G-TB59	Reverse Gear Shaft Bushing
44	AM-MPTC-1100-9D-3G-TB44	Axle Drive Bevel Pinion	60	AM-MPTC-1100-9D-3G-TB60	Threaded Pin
45	AM-MPTC-1100-9D-3G-TB45	Countershaft Assy	61	AM-MPTC-1100-9D-3G-TB61	Reverse Gear Shifting Fork
46	AM-MPTC-1100-9D-3G-TB46	Key	62	AM-MPTC-1100-9D-3G-TB62	Reverse Gear Shifting Fork Shaft
47	AM-MPTC-1100-9D-3G-TB47	Bearing	63	AM-MPTC-1100-9D-3G-TB63	Bolt
48	AM-MPTC-1100-9D-3G-TB48	Countershaft Gear Dual Gear	64	AM-MPTC-1100-9D-3G-TB64	Reverse Cable Seat

TRANSMISSION DIAGRAM & PART LIST OF INTERCULTIVATOR/POWER WEEDER

SL NO	PART NO	DESCRIPTION	SL NO	PART NO	DESCRIPTION
65	AM-MPTC-1100-9D-3G-TB65	Clutch Cable Seat	81	AM-MPTC-1100-9D-3G-TB81	O Ring
66	AM-MPTC-1100-9D-3G-TB66	Clutch Cable Seat	82	AM-MPTC-1100-9D-3G-TB82	Flat Washer
67	AM-MPTC-1100-9D-3G-TB67	Spring Washer			
68	AM-MPTC-1100-9D-3G-TB68	Clutch Fork Pin			
69	AM-MPTC-1100-9D-3G-TB69	Clutch Fork Shaft			
70	AM-MPTC-1100-9D-3G-TB70	Clutch Fork			
71	AM-MPTC-1100-9D-3G-TB71	Washer			
72	AM-MPTC-1100-9D-3G-TB72	Clutch Flat Washer			
73	AM-MPTC-1100-9D-3G-TB73	Deep Groove Ball Bearing			
74	AM-MPTC-1100-9D-3G-TB74	Washer			
75	AM-MPTC-1100-9D-3G-TB75	Locking Washer			
76	AM-MPTC-1100-9D-3G-TB76	Hexagonal Bolt			
77	AM-MPTC-1100-9D-3G-TB77	Deep Groove Ball Bearing			
78	AM-MPTC-1100-9D-3G-TB78	Clutch Cover Assy			
79	AM-MPTC-1100-9D-3G-TB79	Clutch Core Assy			
80	AM-MPTC-1100-9D-3G-TB80	Driving Bevel Gear Washer			

TRANSMISSION DIAGRAM & PART LIST OF INTERCULTIVATOR/POWER WEEDER

WALKING BOX- C

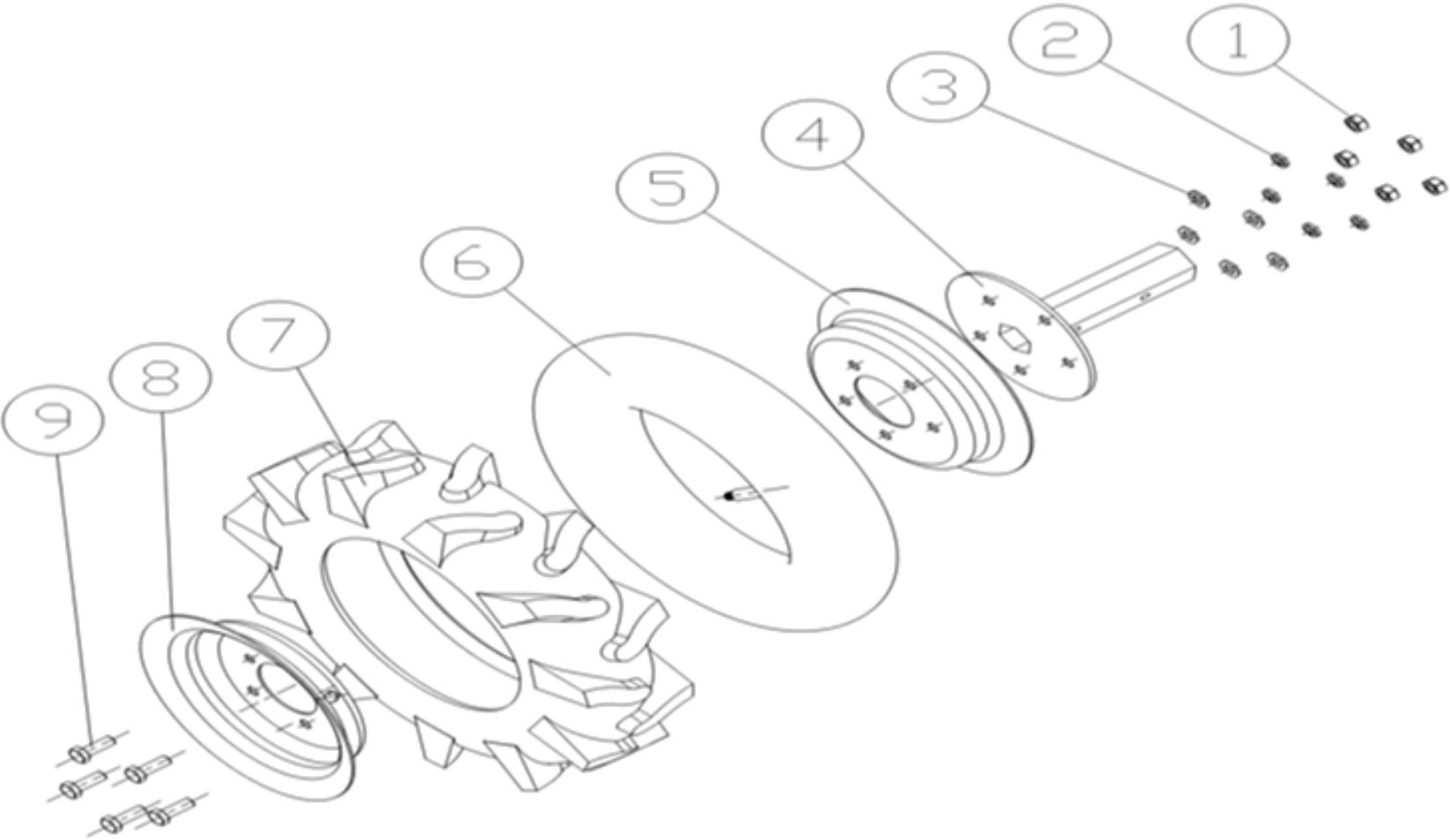


TRANSMISSION DIAGRAM & PART LIST OF INTERCULTIVATOR/POWER WEEDER

SL NO	PART NO	DESCRIPTION	SL NO	PART NO	DESCRIPTION
1	AM-MPTC-1100-9D-3G-TC01	Nut	17	AM-MPTC-1100-9D-3G-TC17	adjusting washer
2	AM-MPTC-1100-9D-3G-TC02	Split pin	18	AM-MPTC-1100-9D-3G-TC18	Tapered Roller Bearing
3	AM-MPTC-1100-9D-3G-TC03	Spring washer	19	AM-MPTC-1100-9D-3G-TC19	walking case paper pad
4	AM-MPTC-1100-9D-3G-TC04	Driven umbrella gear	20	AM-MPTC-1100-9D-3G-TC20	walking case end cover
5	AM-MPTC-1100-9D-3G-TC05	Tapered Roller Bearing	21	AM-MPTC-1100-9D-3G-TC21	flat washer
6	AM-MPTC-1100-9D-3G-TC06	walking case	22	AM-MPTC-1100-9D-3G-TC22	spring washer
7	AM-MPTC-1100-9D-3G-TC07	Tapered Roller Bearing	23	AM-MPTC-1100-9D-3G-TC23	Bolt
8	AM-MPTC-1100-9D-3G-TC08	umbrella gear shaft			
9	AM-MPTC-1100-9D-3G-TC09	O ring			
10	AM-MPTC-1100-9D-3G-TC10	drain bolt			
11	AM-MPTC-1100-9D-3G-TC11	oil seal			
12	AM-MPTC-1100-9D-3G-TC12	deep groove ball bearing			
13	AM-MPTC-1100-9D-3G-TC13	output shaft bush			
14	AM-MPTC-1100-9D-3G-TC14	adjusting washer			
15	AM-MPTC-1100-9D-3G-TC15	Inner hex output shaft bush			
16	AM-MPTC-1100-9D-3G-TC16	walking umbrella gear			

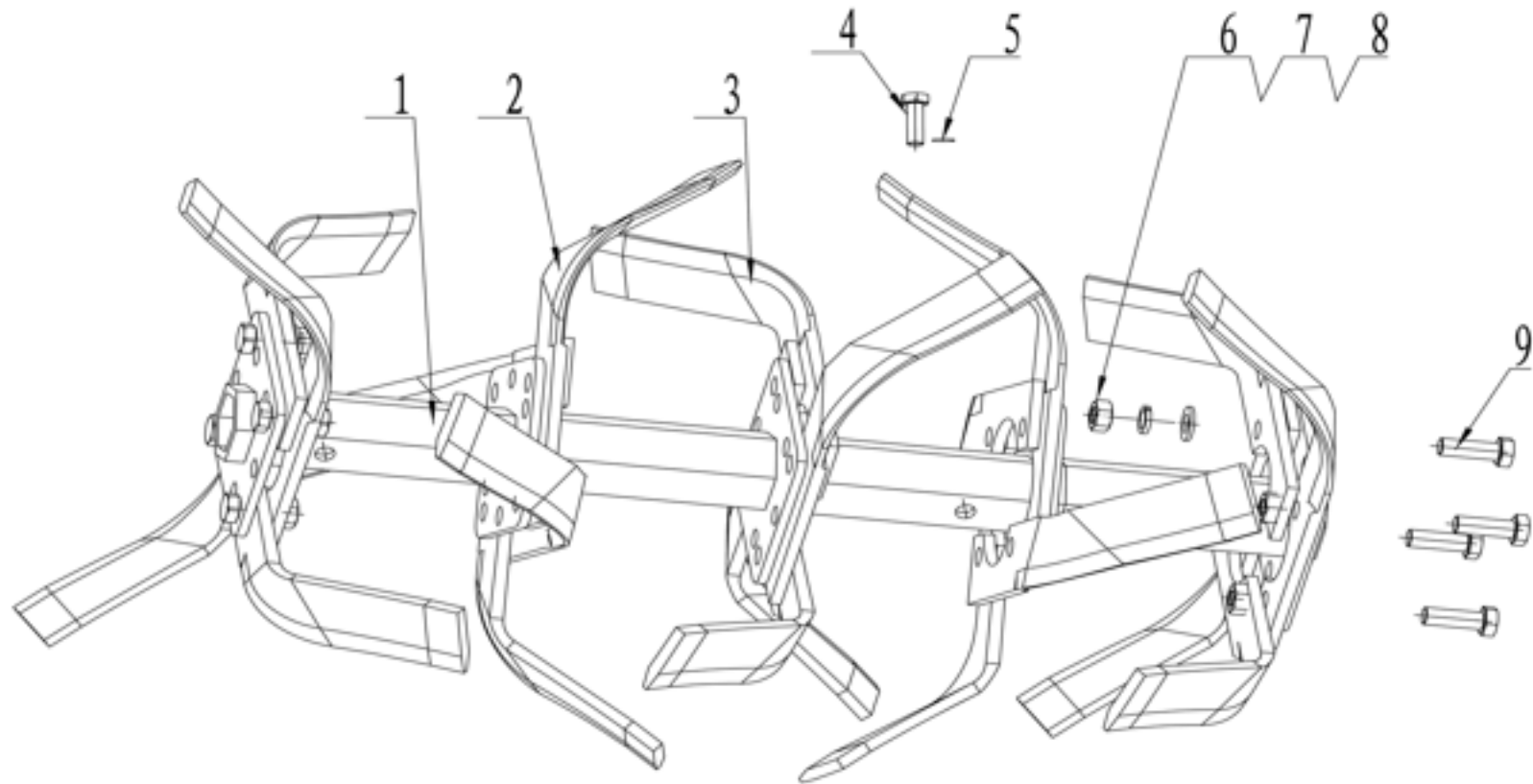
TRANSMISSION DIAGRAM & PART LIST OF INTERCULTIVATOR/POWER WEEDER

WHEEL ASSY - D



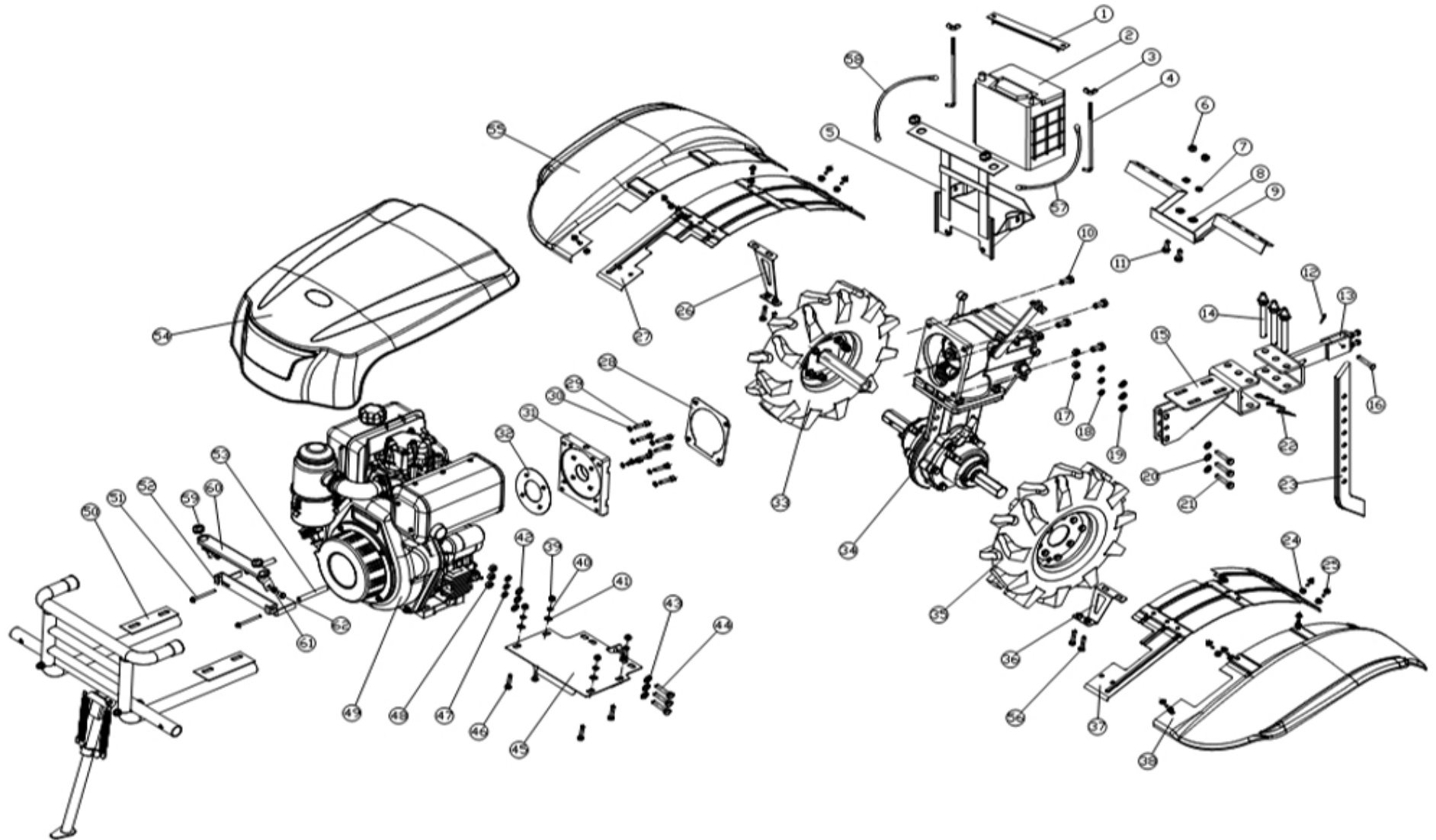
TRANSMISSION DIAGRAM & PART LIST OF INTERCULTIVATOR/POWER WEEDER

BLADE ASYY - E



TRANSMISSION DIAGRAM & PART LIST OF INTERCULTIVATOR/POWER WEEDER

FENDER - F



TRANSMISSION DIAGRAM & PART LIST OF INTERCULTIVATOR/POWER WEEDER

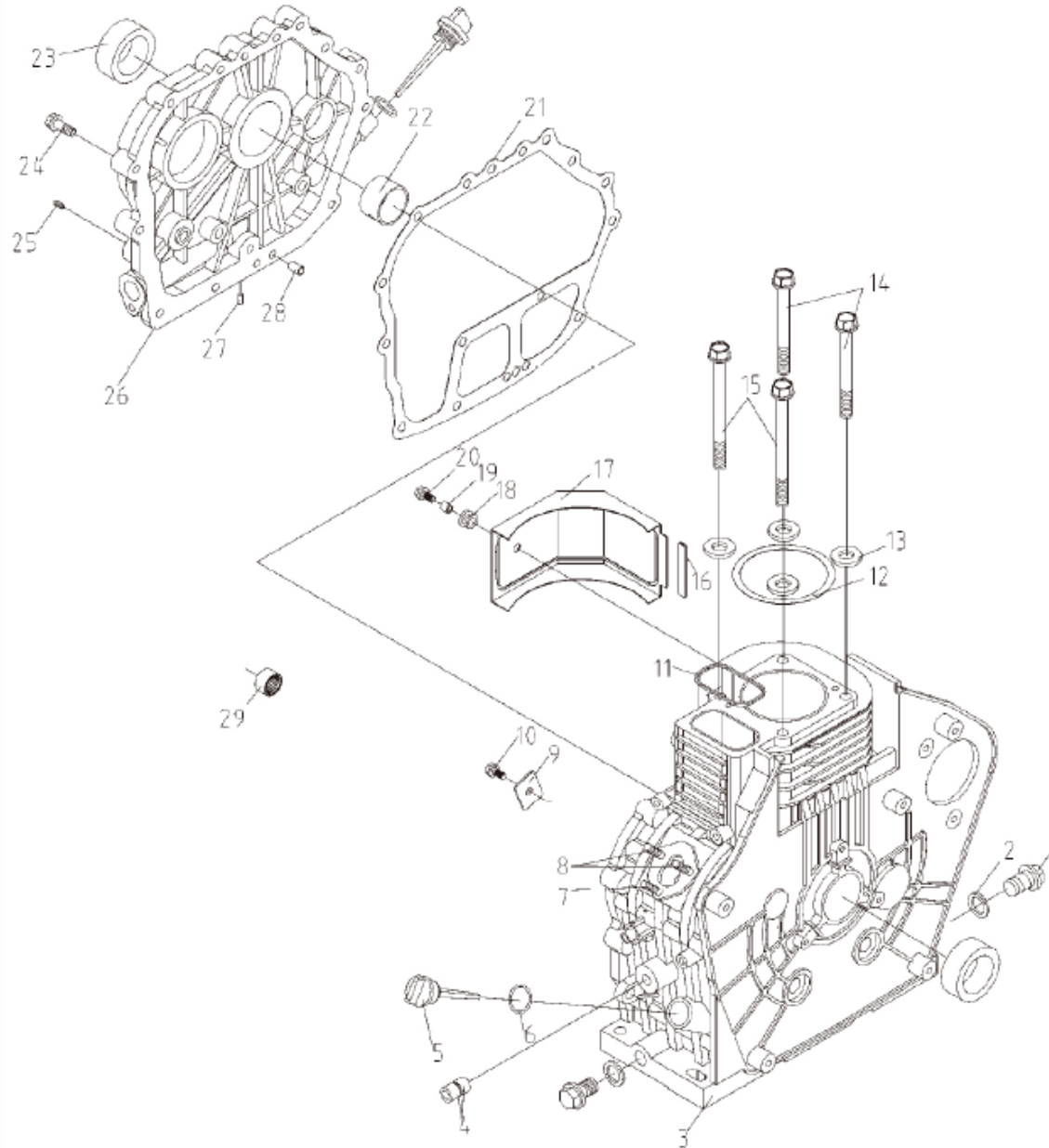
SL NO	PART NO	DESCRIPTION	SL NO	PART NO	DESCRIPTION
1	AM-MPTC-1100-9D-3G-TF01	Battery strip assy	17	AM-MPTC-1100-9D-3G-TF17	B type pin
2	AM-MPTC-1100-9D-3G-TF02	Battery	18	AM-MPTC-1100-9D-3G-TF18	Hexagon nut
3	AM-MPTC-1100-9D-3G-TF03	white zinc	19	AM-MPTC-1100-9D-3G-TF19	spring washer
4	AM-MPTC-1100-9D-3G-TF04	Threaded rod	20	AM-MPTC-1100-9D-3G-TF20	Flat washer
5	AM-MPTC-1100-9D-3G-TF05	Battery box assy	21	AM-MPTC-1100-9D-3G-TF21	Flat washer
6	AM-MPTC-1100-9D-3G-TF06	Hexagon nut	22	AM-MPTC-1100-9D-3G-TF22	Hexagon bolt
7	AM-MPTC-1100-9D-3G-TF07	spring washer	23	AM-MPTC-1100-9D-3G-TF23	R type split pin
8	AM-MPTC-1100-9D-3G-TF08	Flat washer	24	AM-MPTC-1100-9D-3G-TF24	Plow knife
9	AM-MPTC-1100-9D-3G-TF09	Fender rear holder	25	AM-MPTC-1100-9D-3G-TF25	Hexagon flange lock nut
10	AM-MPTC-1100-9D-3G-TF10	Hexagon flange bolt	26	AM-MPTC-1100-9D-3G-TF26	Hexagon flange bolt
11	AM-MPTC-1100-9D-3G-TF11	Hexagon flange bolt	27	AM-MPTC-1100-9D-3G-TF27	Fender front holder(right)
12	AM-MPTC-1100-9D-3G-TF12	threaded hexagon bolt	28	AM-MPTC-1100-9D-3G-TF28	Right fender
13	AM-MPTC-1100-9D-3G-TF13	R type split pin	29	AM-MPTC-1100-9D-3G-TF29	Gearbox paper pad
14	AM-MPTC-1100-9D-3G-TF14	connecting frame	30	AM-MPTC-1100-9D-3G-TF30	Hexagon screw
15	AM-MPTC-1100-9D-3G-TF15	Pin	31	AM-MPTC-1100-9D-3G-TF31	spring washer
16	AM-MPTC-1100-9D-3G-TF16	Towed body	32	AM-MPTC-1100-9D-3G-TF32	Flange plate

TRANSMISSION DIAGRAM & PART LIST OF INTERCULTIVATOR/POWER WEEDER

SL NO	PART NO	DESCRIPTION	SL NO	PART NO	DESCRIPTION
33	AM-MPTC-1100-9D-3G-TF33	Flange plate paper pad	49	AM-MPTC-1100-9D-3G-TF49	Hexagon nut
34	AM-MPTC-1100-9D-3G-TF34	Right wheel assy	50	AM-MPTC-1100-9D-3G-TF50	186FE diesel(as per order requirement)
35	AM-MPTC-1100-9D-3G-TF35	186F diesel engine	51	AM-MPTC-1100-9D-3G-TF51	Bumper assy
36	AM-MPTC-1100-9D-3G-TF36	Left wheel assy	52	AM-MPTC-1100-9D-3G-TF52	Hexagon flange bolt
37	AM-MPTC-1100-9D-3G-TF37	Fender front holder(left)	53	AM-MPTC-1100-9D-3G-TF53	Lamp cover front holder A block
38	AM-MPTC-1100-9D-3G-TF38	Left fender	54	AM-MPTC-1100-9D-3G-TF54	Lamp cover front holder B block
39	AM-MPTC-1100-9D-3G-TF39	Left deputy fender	55	AM-MPTC-1100-9D-3G-TF55	H glue
40	AM-MPTC-1100-9D-3G-TF40	Hexagon nut	56	AM-MPTC-1100-9D-3G-TF56	lamp cover holder
41	AM-MPTC-1100-9D-3G-TF41	spring washer	57	AM-MPTC-1100-9D-3G-TF57	cover assy
42	AM-MPTC-1100-9D-3G-TF42	Flat washer	58	AM-MPTC-1100-9D-3G-TF58	right deputy fender
43	AM-MPTC-1100-9D-3G-TF43	Flat washer	59	AM-MPTC-1100-9D-3G-TF59	hexagon bolt
44	AM-MPTC-1100-9D-3G-TF44	Flat washer	60	AM-MPTC-1100-9D-3G-TF60	cable
45	AM-MPTC-1100-9D-3G-TF45	Hexagon bolt	61	AM-MPTC-1100-9D-3G-TF61	cable
46	AM-MPTC-1100-9D-3G-TF46	Engine holder			
47	AM-MPTC-1100-9D-3G-TF47	Hexagon bolt			
48	AM-MPTC-1100-9D-3G-TF48	spring washer			

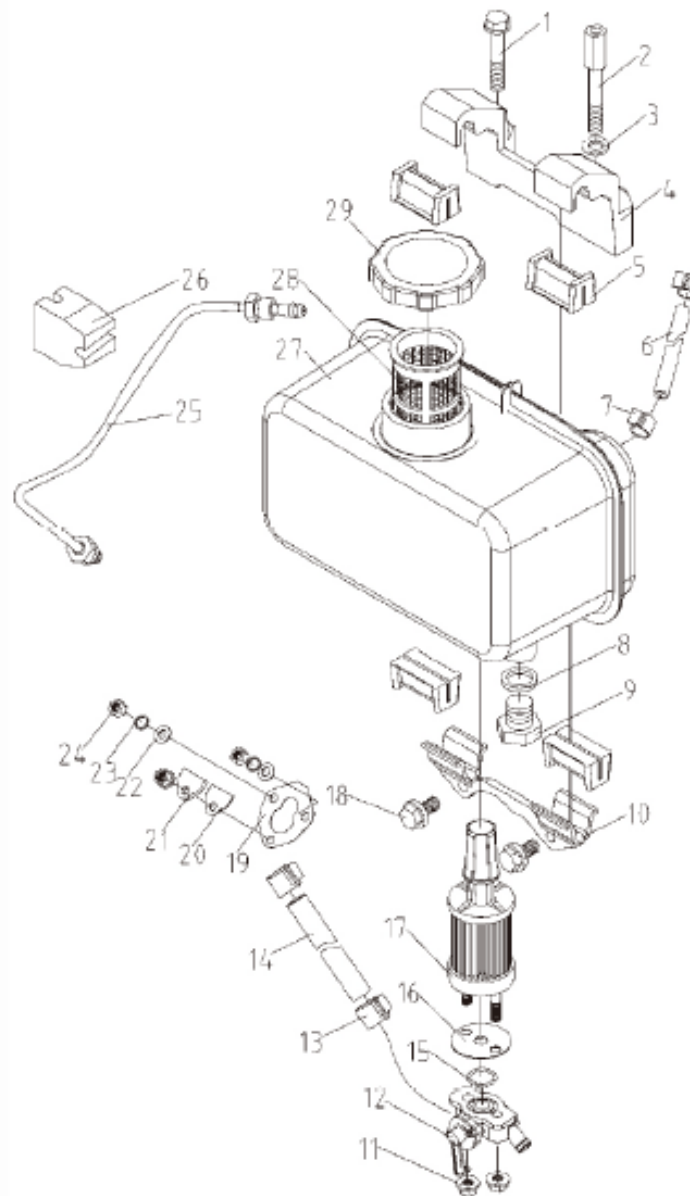
ENGINE DIAGRAM & PART LIST OF INTERCULTIVATOR/POWER WEEDER

CRANKCASE ASSY - A



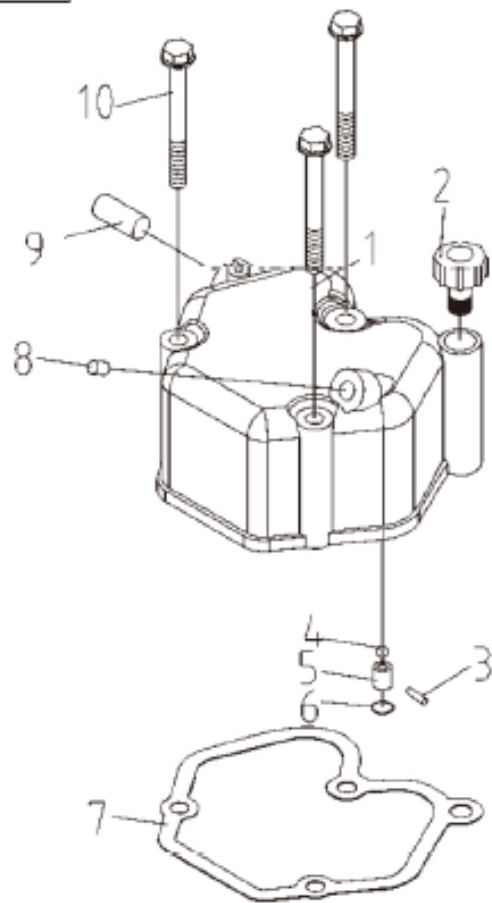
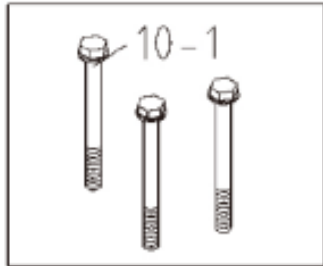
SL NO	PART NO.	DESCRIPTION	SL NO	PART NO.	DESCRIPTION
1	AM-186FD-EA01	Drain Plug	17	AM-186FD-EA17	Defector Plate
2	AM-186FD-EA02	Drain Plug gasket	18	AM-186FD-EA18	Isolation pad
3	AM-186FD-EA03	Body	19	AM-186FD-EA19	Bush
4	AM-186FD-EA04	Needle Bearing	20	AM-186FD-EA20	Bolt
5	AM-186FD-EA05	Oil Level Guage	21	AM-186FD-EA21	Crankcase Cover gasket
6	AM-186FD-EA06	O-Ring Seal	22	AM-186FD-EA22	Sliding bearing
7	AM-186FD-EA07	Injection Pump tighten Stud (Short)	23	AM-186FD-EA23	Oil Seal
8	AM-186FD-EA08	Injection Pump tighten Stud (Long)	24	AM-186FD-EA24	Bolt
9	AM-186FD-EA09	Thrust Plate	25	AM-186FD-EA25	Hexagonal socket head plug
10	AM-186FD-EA10	Bolt	26	AM-186FD-EA26	Crankcase cover
11	AM-186FD-EA11	Seal Ring	27	AM-186FD-EA27	Blocking
12	AM-186FD-EA12	Cylinder Head Gasket	28	AM-186FD-EA28	Pin
13	AM-186FD-EA13	Cylinder Headd Nut washer	29	AM-186FD-EA29	Needle Bearing
14	AM-186FD-EA14	Cylinder Head Bolt (Short)			
15	AM-186FD-EA15	Cylinder Head Bolt (Long)			
16	AM-186FD-EA16	Isolation Pad Strip			

FUEL SYSTEM - B



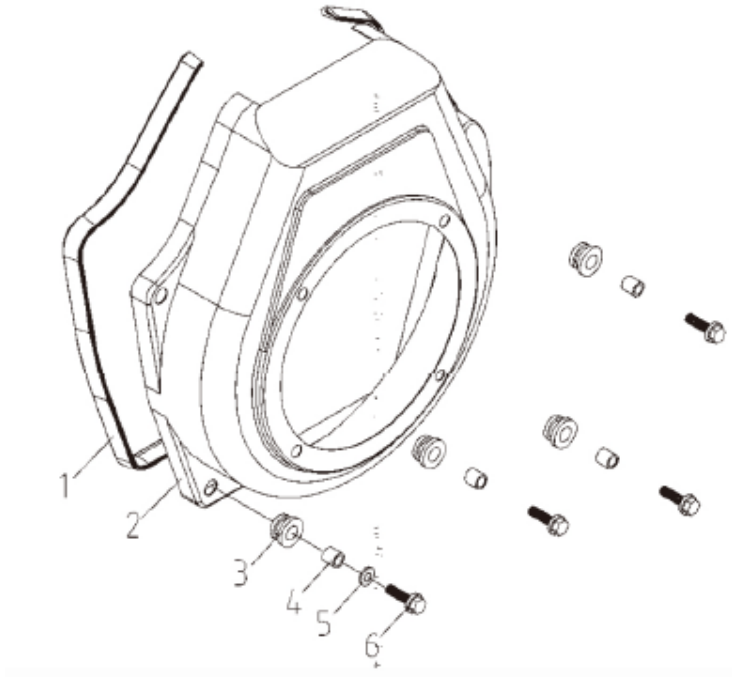
SL NO	PART NO.	DESCRIPTION	SL NO	PART NO.	DESCRIPTION
1	AM-186FD-EB01	Bolt	17	AM-186FD-EB17	Filter Element component
2	AM-186FD-EB02	Bolt	18	AM-186FD-EB18	Bolt
3	AM-186FD-EB03	Gasket	19	AM-186FD-EB19	Gasket
4	AM-186FD-EB04	Fuel Tank Bracket	20	AM-186FD-EB20	Gasket Seal
5	AM-186FD-EB05	Shock obserbing Pad	21	AM-186FD-EB21	Seal Plate
6	AM-186FD-EB06	Oil Return Pipe	22	AM-186FD-EB22	Gasket
7	AM-186FD-EB07	Retur Pipe Clamp	23	AM-186FD-EB23	Gasket
8	AM-186FD-EB08	Oil Drain Bolt Gasket	24	AM-186FD-EB24	Bolt
9	AM-186FD-EB09	Bolt	25	AM-186FD-EB25	High Pressure tubing Part
10	AM-186FD-EB10	Tank Lower support Unit	26	AM-186FD-EB26	Shock observing pad
11	AM-186FD-EB11	Bolt	27	AM-186FD-EB27	Tank Welded Parts
12	AM-186FD-EB12	Tank Switch Body Component	28	AM-186FD-EB28	Oil Filter
13	AM-186FD-EB13	Damp	29	AM-186FD-EB29	Fuel Tank Cap Components
14	AM-186FD-EB14	Oil Delivery Pipe			
15	AM-186FD-EB15	O-Ring			
16	AM-186FD-EB16	Diesel Gasket			

CYLINDER HEAD COVER ASSY - C



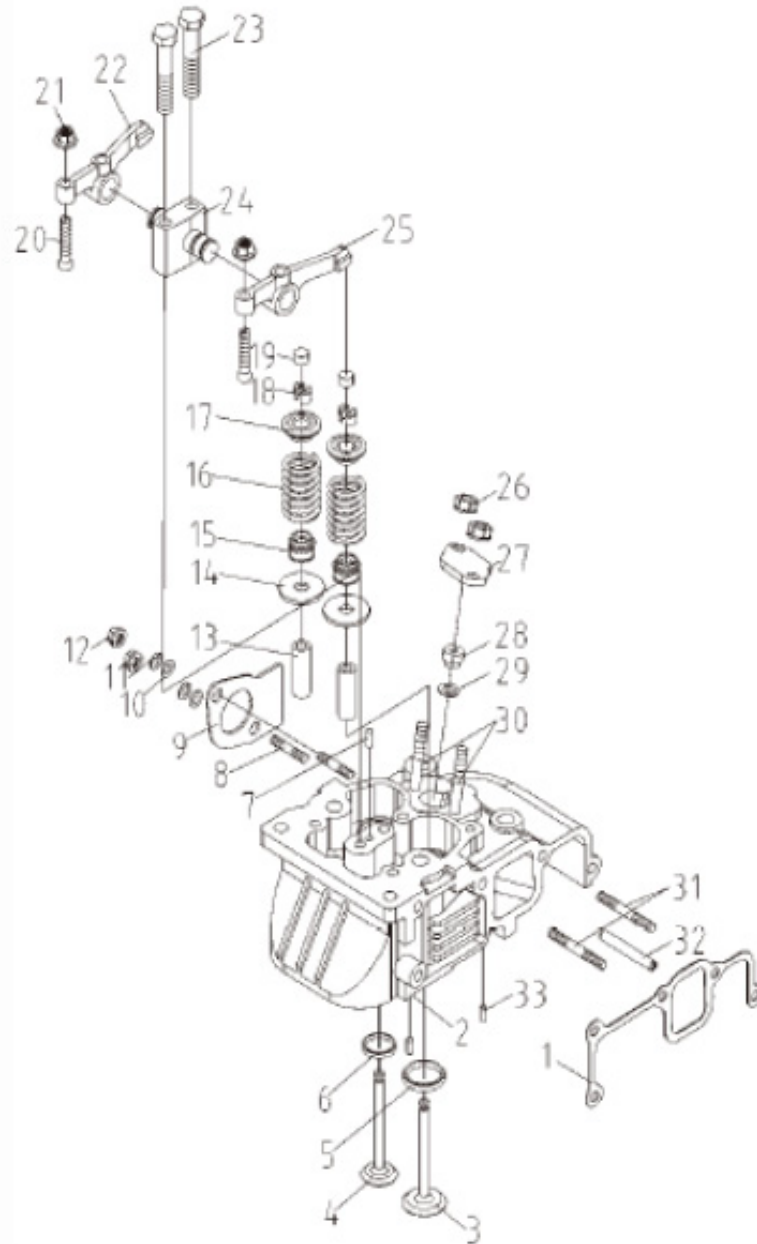
SL NO	PART NO.	DESCRIPTION
1	AM-186FD-EC01	Cylinder Head Cover
2	AM-186FD-EC02	Oiling Plug
3	AM-186FD-EC03	Pin
4	AM-186FD-EC04	Ball
5	AM-186FD-EC05	Holder
6	AM-186FD-EC06	O-Ring
7	AM-186FD-EC07	Cylinder Head cover gasket
8	AM-186FD-EC08	Blocking
9	AM-186FD-EC09	Decompression shaft blocking
10	AM-186FD-EC10	Bolt
10.1	AM-186FD-EC10.1	Bolt

AIR HOOD ASSY -D



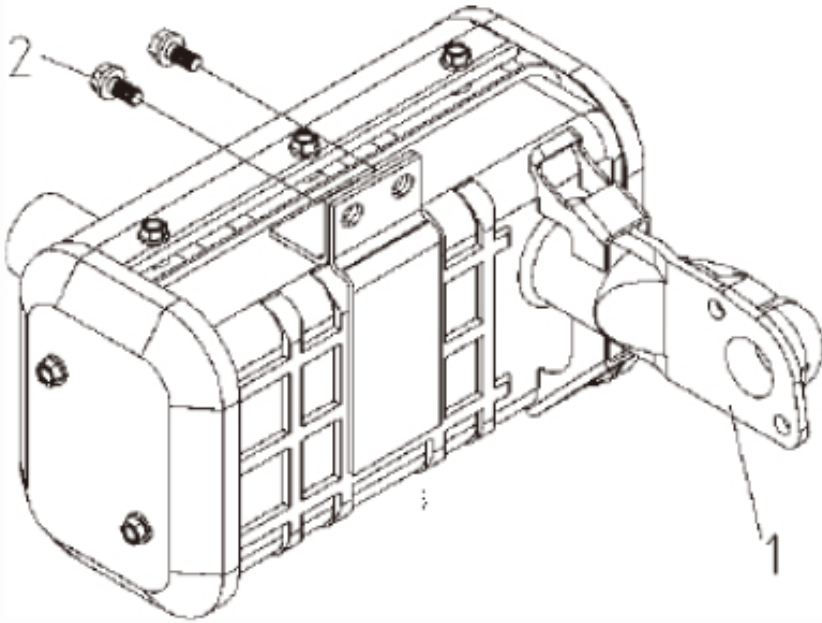
SL NO	PART NO.	DESCRIPTION
1	AM-186FD-ED01	Shock observing pad
2	AM-186FD-ED02	Air hood Welds
3	AM-186FD-ED03	Shock observer sleeve
4	AM-186FD-ED04	Bush
5	AM-186FD-ED05	Gasket
6	AM-186FD-ED06	Bolt

CYLINDER HEAD ASSY - E



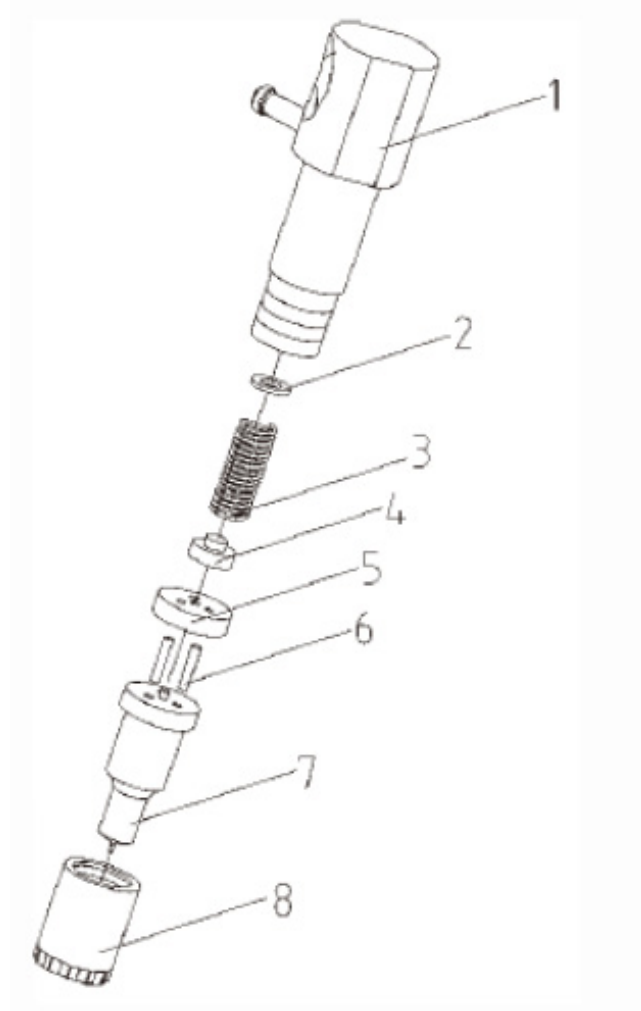
SL NO	PART NO.	DESCRIPTION	SL NO	PART NO.	DESCRIPTION
1	AM-186FD-EE01	Intake Gasket	18	AM-186FD-EE18	Valve Collect
2	AM-186FD-EE02	Cylinder Head	19	AM-186FD-EE19	Valve adjustment pad
3	AM-186FD-EE03	Intake Valve	20	AM-186FD-EE20	Valve adjusting Screw
4	AM-186FD-EE04	Exhaust Valve	21	AM-186FD-EE21	Valve adjustment lock nut
5	AM-186FD-EE05	Intake Valve seat	22	AM-186FD-EE22	Exhaust valve Rocker arm
6	AM-186FD-EE06	Exhaust Valve seat	23	AM-186FD-EE23	Rocker arm Support bolt
7	AM-186FD-EE07	Pin	24	AM-186FD-EE24	Rocker arm Support
8	AM-186FD-EE08	Stud	25	AM-186FD-EE25	Inlet Valve rocker arm
9	AM-186FD-EE09	Exhaust Gasket	26	AM-186FD-EE26	Nut
10	AM-186FD-EE10	Gasket	27	AM-186FD-EE27	Fuel injector pressure plate
11	AM-186FD-EE11	Gasket	28	AM-186FD-EE28	insulation cover
12	AM-186FD-EE12	Nut	29	AM-186FD-EE29	Insulation cover Gasket
13	AM-186FD-EE13	Valve Guide pipe	30	AM-186FD-EE30	Stud
14	AM-186FD-EE14	Valve Spring Washer	31	AM-186FD-EE31	Stud
15	AM-186FD-EE15	Valve Guide oil Seal	32	AM-186FD-EE32	Exhaust circulation pipe
16	AM-186FD-EE16	Valve Spring	33	AM-186FD-EE33	Pipe
17	AM-186FD-EE17	Valve Spring Retainer			

EXHAUST SYSTEM - F



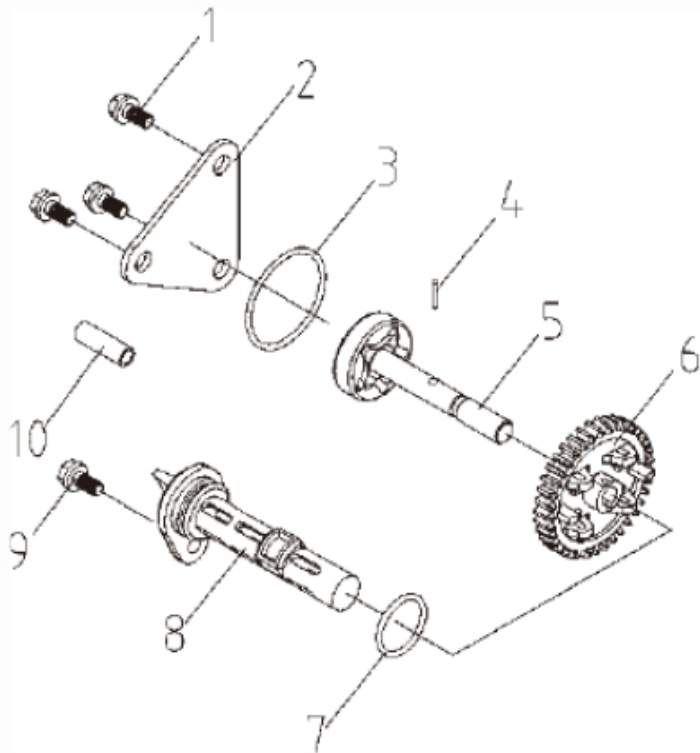
SL NO	PART NO.	DESCRIPTION
1	AM-186FD-EF01	Muffler Component
2	AM-186FD-EF02	Bolt

OIL INJECTOR ASSY - G



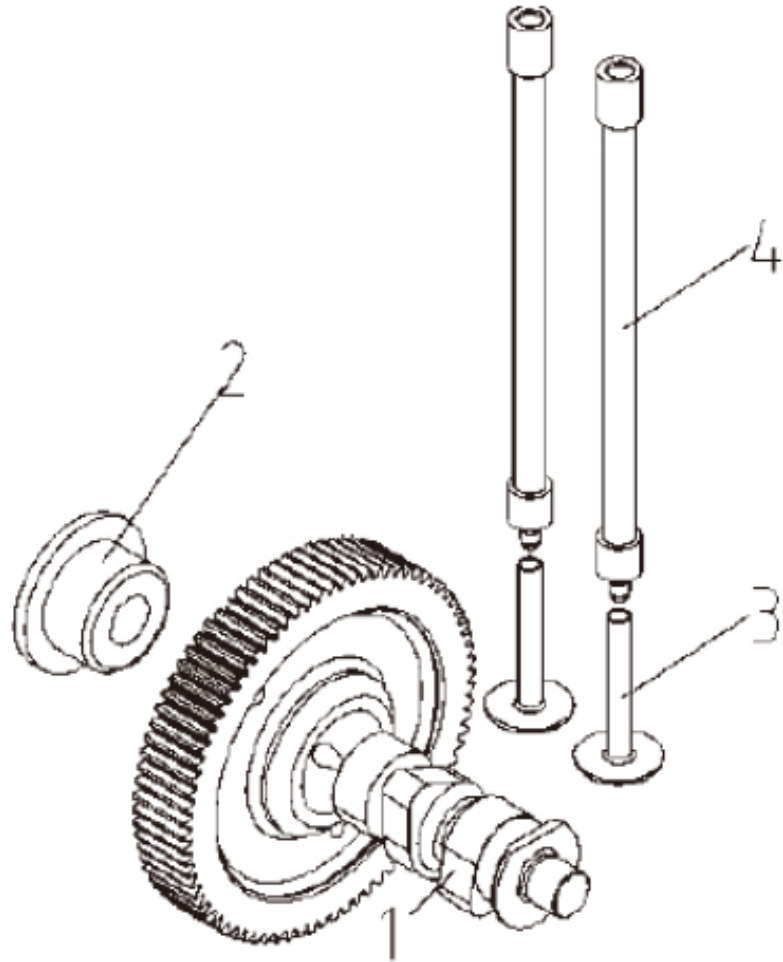
SL NO	PART NO.	DESCRIPTION
1	AM-186FD-EG01	Fuel Injector Body Assy
2	AM-186FD-EG02	Pressure Regulating Gasket
3	AM-186FD-EG03	Pressure adjusting Spring
4	AM-186FD-EG04	Nuchal bar
5	AM-186FD-EG05	Mid Body
6	AM-186FD-EG06	Locating Pin
7	AM-186FD-EG07	Injector Nozzel Parts
8	AM-186FD-EG08	Nozzel retaining nuts

Lubrication System - H



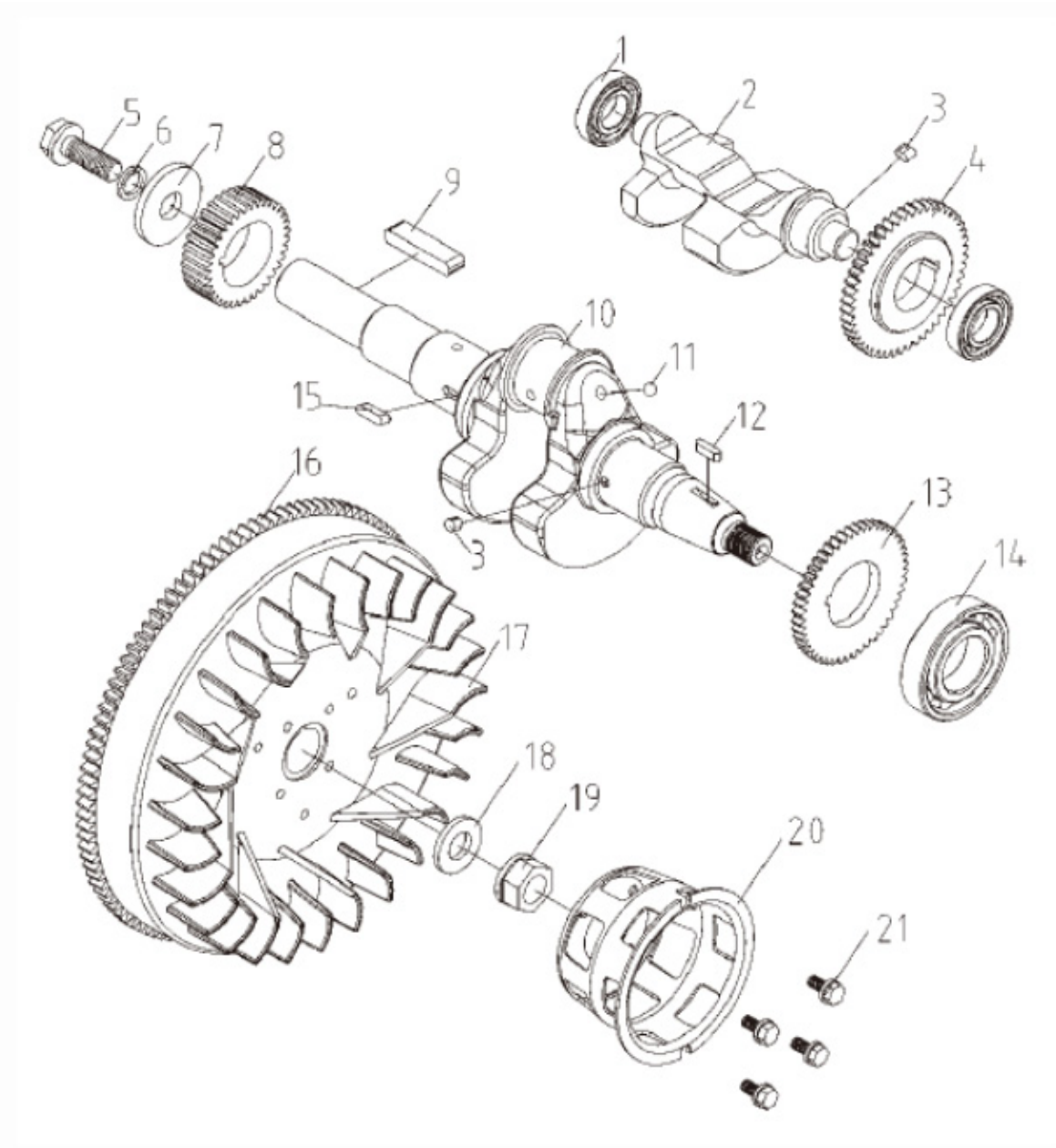
SL NO	PART NO.	DESCRIPTION
1	AM-186FD-EH01	Bolt
2	AM-186FD-EH02	Oil
3	AM-186FD-EH03	O-Ring
4	AM-186FD-EH04	Pin
5	AM-186FD-EH05	Oil Pump Component
6	AM-186FD-EH06	Oil Pump Transmission Gear
7	AM-186FD-EH07	O-Ring
8	AM-186FD-EH08	Oil Filter Component
9	AM-186FD-EH09	Bolt
10	AM-186FD-EH10	Oil inlet Duct

CAMSHAFT ASSY - J



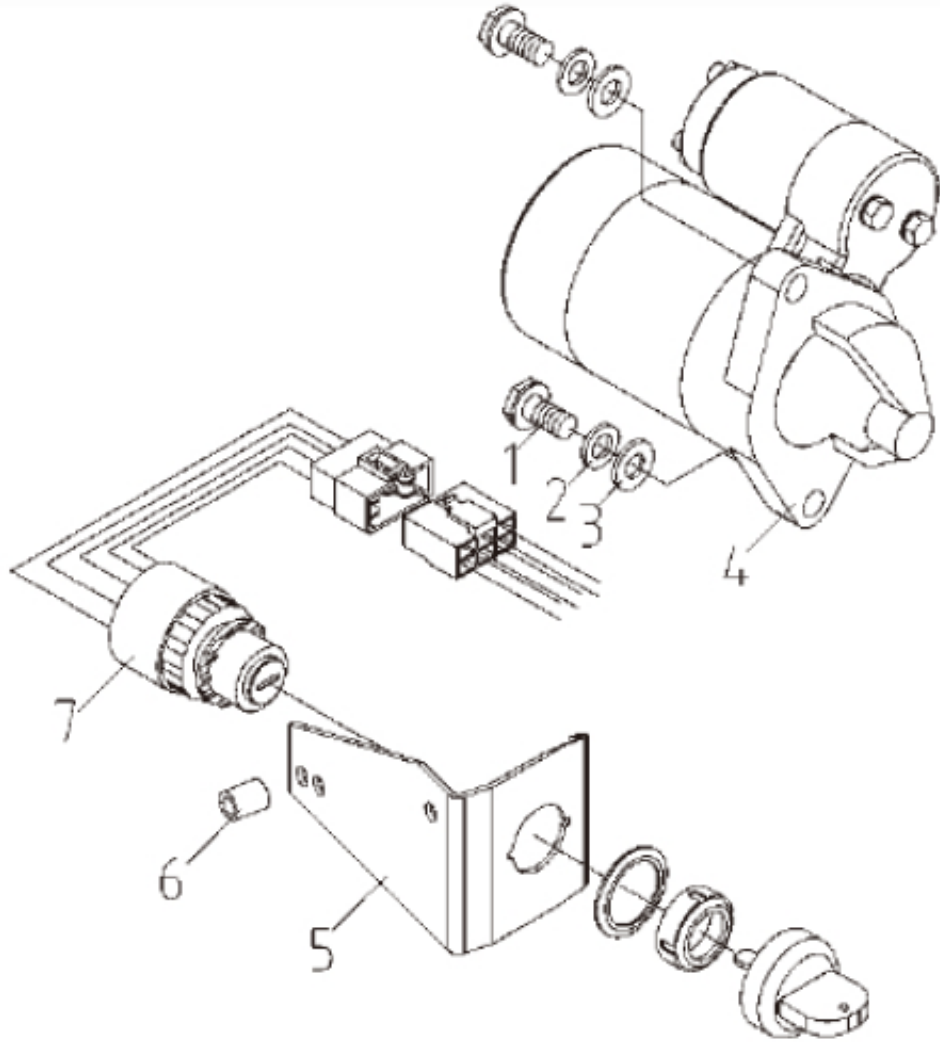
SL NO	PART NO.	DESCRIPTION
1	AM-186FD-EJ01	Camshaft Timing Gear Comp
2	AM-186FD-EJ02	Camshaft Sleeve
3	AM-186FD-EJ03	Valve Filter
4	AM-186FD-EJ04	Valve Push Rod Comp

CRANKSHAFT FLY WHEEL ASSY - K



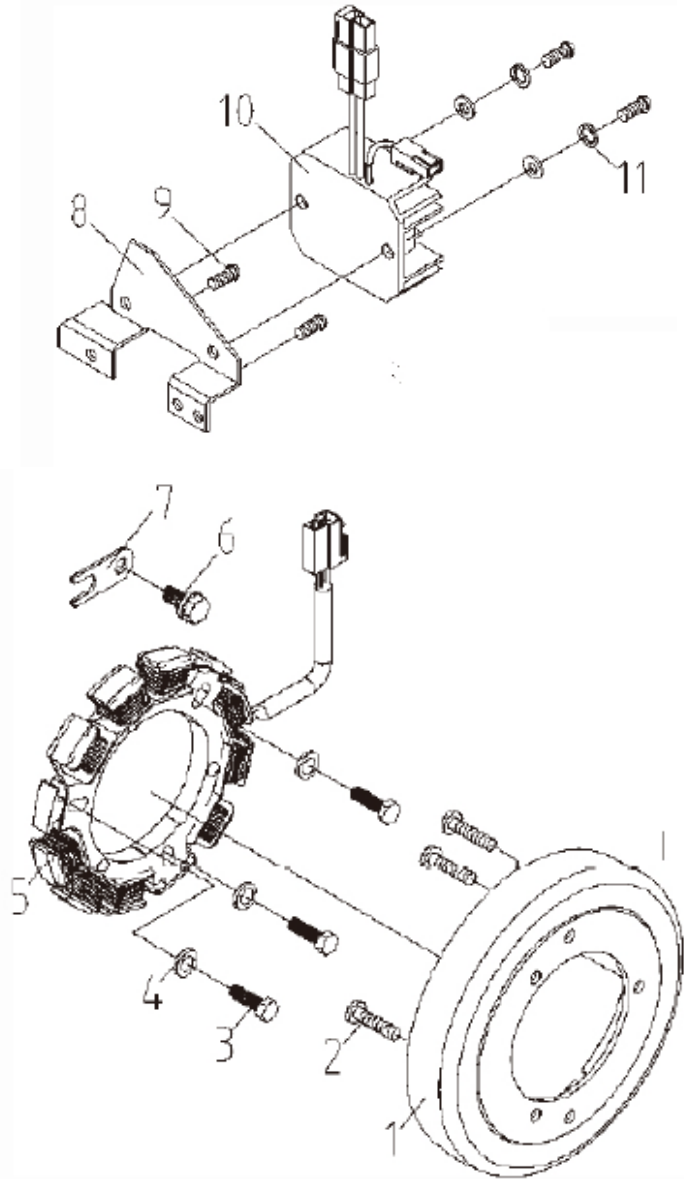
SL NO	PART NO.	DESCRIPTION	SL NO	PART NO.	DESCRIPTION
1	AM-186FD-EK01	Rolling Bearing	12	AM-186FD-EK12	Shaft
2	AM-186FD-EK02	Balance Shaft	13	AM-186FD-EK13	Balance shaft Frive gear
3	AM-186FD-EK03	Key	14	AM-186FD-EK14	Rolling Bear
4	AM-186FD-EK04	Balance Shaft Timing Gear	15	AM-186FD-EK15	Shaft
5	AM-186FD-EK05	Output End Tighter Bolt	16	AM-186FD-EK16	Flywheel Ring Gear
6	AM-186FD-EK06	Gasket	17	AM-186FD-EK17	Flywheel
7	AM-186FD-EK07	Output Washer	18	AM-186FD-EK18	Flywheel Nut Washer
8	AM-186FD-EK08	Crankshaft Timing Gear	19	AM-186FD-EK19	Flywheel Nut
9	AM-186FD-EK09	Shaft	20	AM-186FD-EK20	Starting Pawl
10	AM-186FD-EK10	Crankshaft	21	AM-186FD-EK21	Bolt
11	AM-186FD-EK11	Steel Ball			

STARTER MOTOR ASSY - L



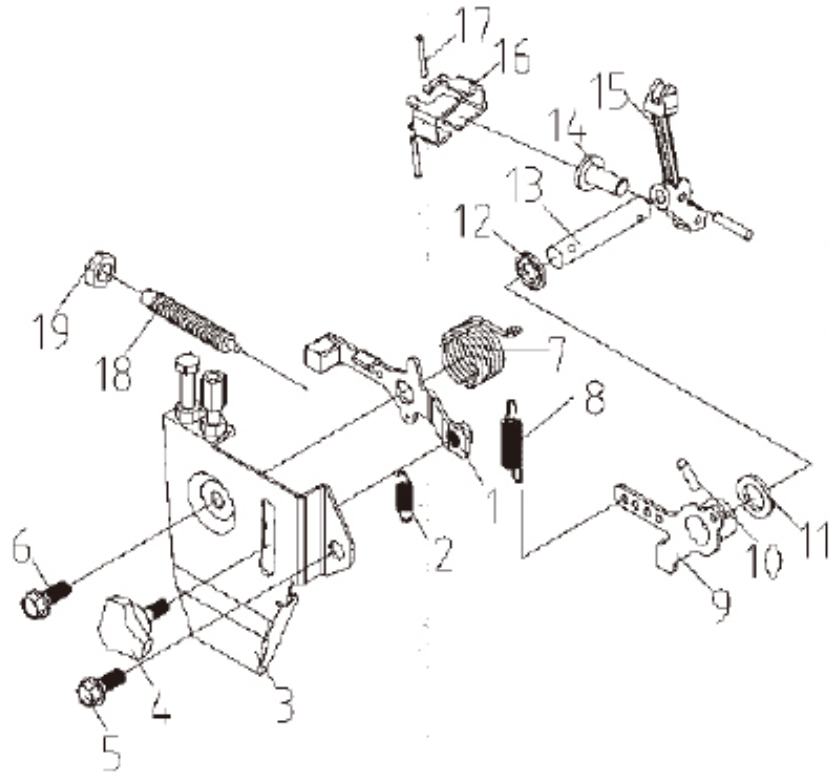
SL NO	PART NO.	DESCRIPTION
1	AM-186FD-EL01	Bolt
2	AM-186FD-EL02	Gasket
3	AM-186FD-EL03	Gasket
4	AM-186FD-EL04	Starter Motor Component
5	AM-186FD-EL05	Electric Switch Board
6	AM-186FD-EL06	Long Washer
7	AM-186FD-EL07	Starter motor Switch body comp

FLYWHEEL GENERATOR ASSY - M



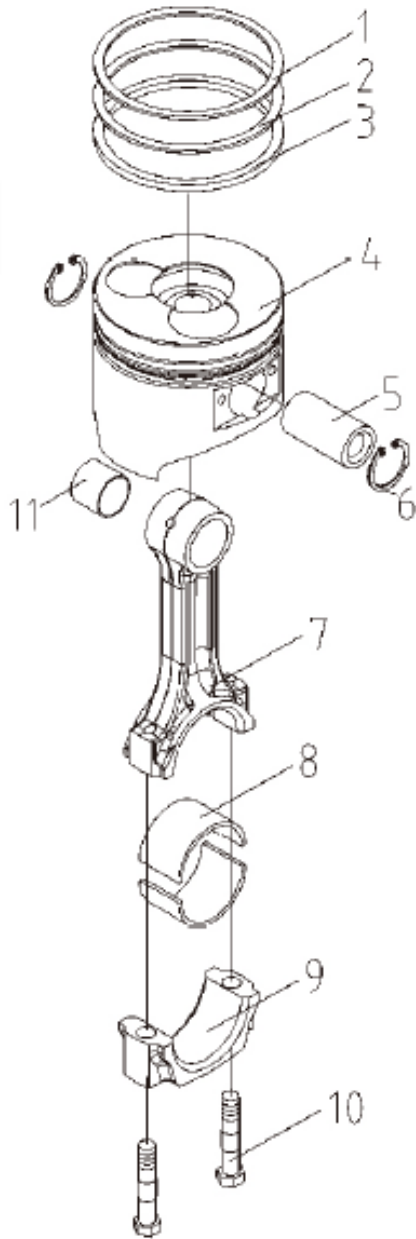
SL NO	PART NO.	DESCRIPTION
1	AM-186FD-EM01	Generator magnet Rotor
2	AM-186FD-EM02	Bolt
3	AM-186FD-EM03	Bolt
4	AM-186FD-EM04	Gasket
5	AM-186FD-EM05	Generator Coil Components
6	AM-186FD-EM06	Bolt
7	AM-186FD-EM07	Briquetting
8	AM-186FD-EM08	Regular Support
9	AM-186FD-EM09	Bolt
10	AM-186FD-EM10	Regulator Unit
11	AM-186FD-EM11	Gasket

SPEED REGULATION & OPERATING SYSTEM - N



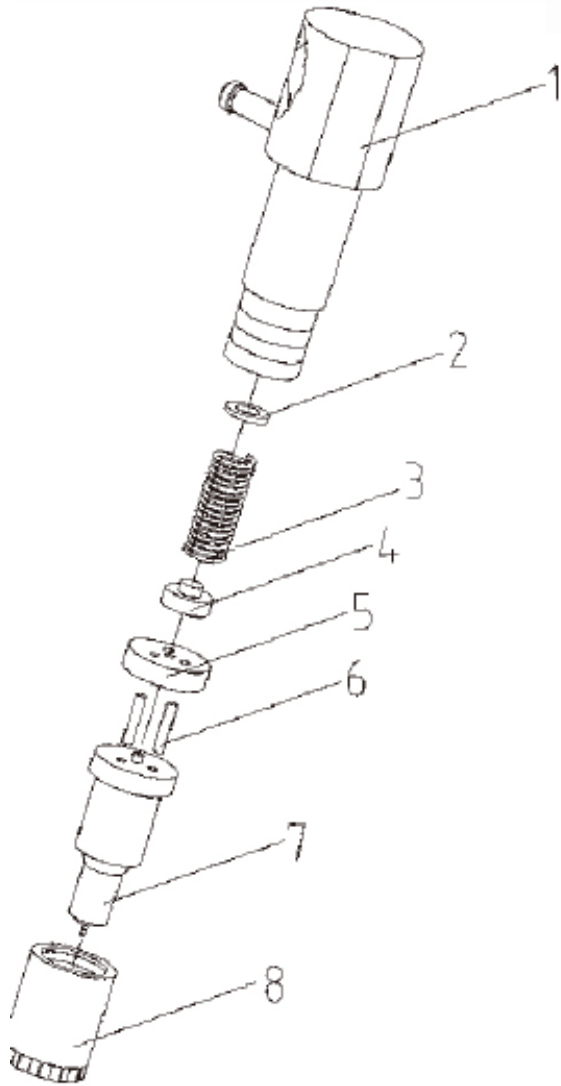
SL NO	PART NO.	DESCRIPTION
1	AM-186FD-EN01	Speed Control handle part
2	AM-186FD-EN02	Return Spring
3	AM-186FD-EN03	Control handle bracket welds
4	AM-186FD-EN04	Handle
5	AM-186FD-EN05	Bolt
6	AM-186FD-EN06	Bolt
7	AM-186FD-EN07	Return Spring
8	AM-186FD-EN08	Governor Spring
9	AM-186FD-EN09	Governor Lever welding parts
10	AM-186FD-EN10	Pin
11	AM-186FD-EN11	Gasket
12	AM-186FD-EN12	Lever shaft oil Seal
13	AM-186FD-EN13	Lever Shaft
14	AM-186FD-EN14	Governor Push Plate
15	AM-186FD-EN15	Shifting Fork
16	AM-186FD-EN16	Flyball
17	AM-186FD-EN17	Flyball Pin
18	AM-186FD-EN18	Fuel Control Unit
19	AM-186FD-EN19	Nut

PISTON & ROD ASSY - P



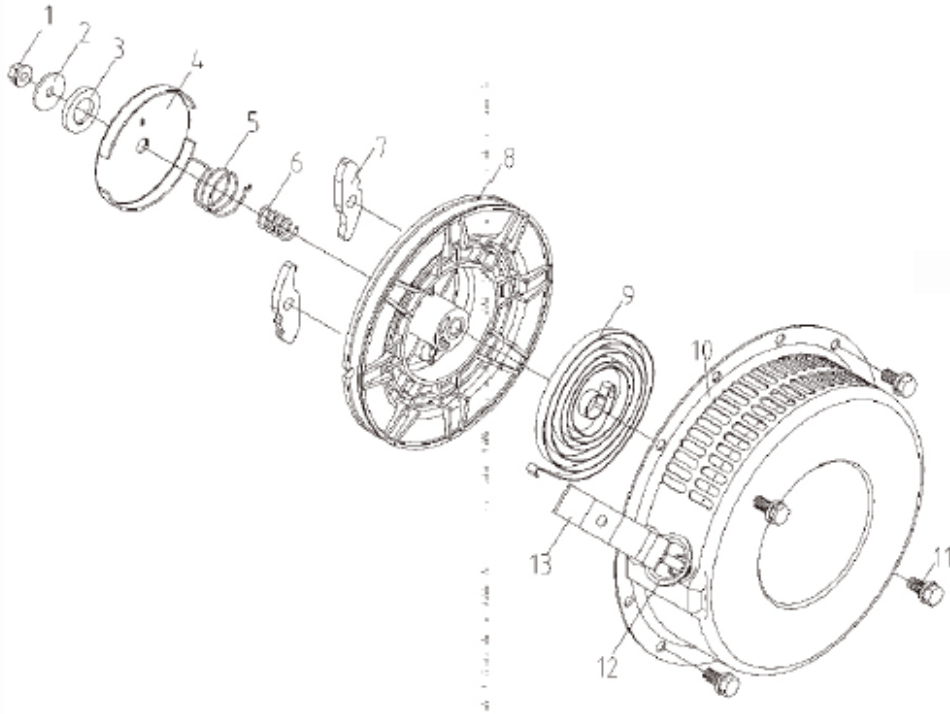
SL NO	PART NO.	DESCRIPTION
1	AM-186FD-EP01	Top Compressoin Ring
2	AM-186FD-EP02	Second Compression Ring
3	AM-186FD-EP03	Oil Ring Unit
4	AM-186FD-EP04	Piston
5	AM-186FD-EP05	Piston Pin
6	AM-186FD-EP06	Retainer Ring
7	AM-186FD-EP07	Connecting Rod Body
8	AM-186FD-EP08	Pitman Box
9	AM-186FD-EP09	Connecting Rod cap
10	AM-186FD-EP10	Connecting Rod Bolt
11	AM-186FD-EP11	Connecting Rod Bush

FUEL INJECTION PUMP ASSY - Q



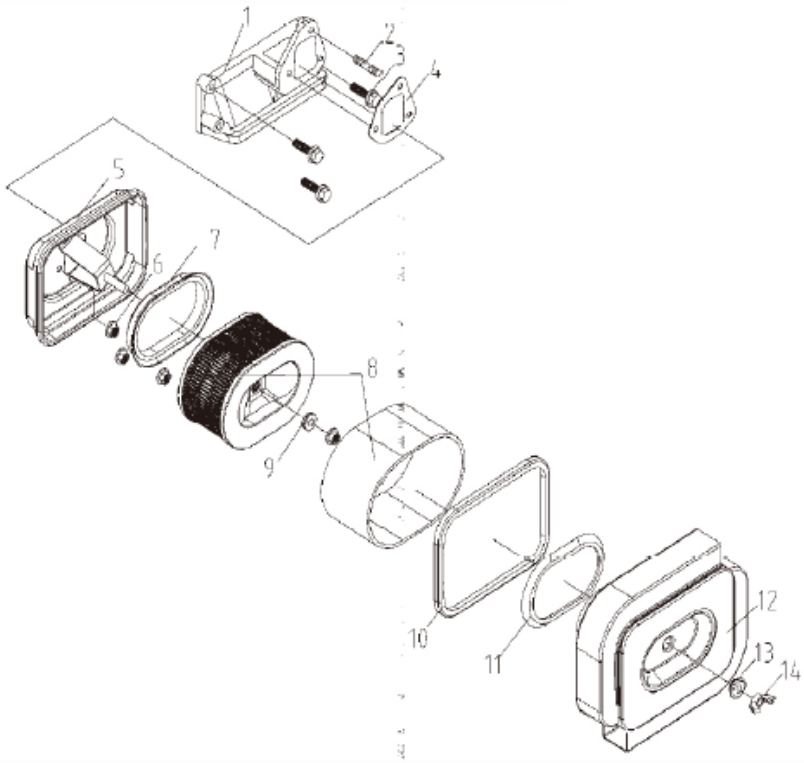
SL NO	PART NO.	DESCRIPTION
1	AM-186FD-EQ01	Oil Delivery Valve Assy
2	AM-186FD-EQ02	High Pressure gasket
3	AM-186FD-EQ03	Spring
4	AM-186FD-EQ04	Oil Inlet
5	AM-186FD-EQ05	plate
6	AM-186FD-EQ06	Pin
7	AM-186FD-EQ07	Nozzel
8	AM-186FD-EQ08	Tappet body locating pin

STARTER ASSY - R



SL NO	PART NO.	DESCRIPTION
1	AM-186FD-ER01	Bolt
2	AM-186FD-ER02	Gasket
3	AM-186FD-ER03	Friction Plate
4	AM-186FD-ER04	Starting Jaw Press
5	AM-186FD-ER05	Torsion Spring
6	AM-186FD-ER06	Compression Spring
7	AM-186FD-ER07	Cranking Claw
8	AM-186FD-ER08	Starting Puller
9	AM-186FD-ER09	Flat Spiral Spring
10	AM-186FD-ER10	Housing Comp
11	AM-186FD-ER11	Bolt
12	AM-186FD-ER12	Starting Rope
13	AM-186FD-ER13	Starting Hand Wheel

AIR INTAKE SYSTEM - S



SL NO	PART NO.	DESCRIPTION
1	AM-186FD-ES01	Intake Tube
2	AM-186FD-ES02	Air Filter fastening Bolt
3	AM-186FD-ES03	Bolt
4	AM-186FD-ES04	Air filter Gasket
5	AM-186FD-ES05	Air filter bottom Shell part
6	AM-186FD-ES06	Bolt
7	AM-186FD-ES07	Shock Proof Sealing Ring II
8	AM-186FD-ES08	Air Filter Core
9	AM-186FD-ES09	Shock Proof part
10	AM-186FD-ES10	Seal Ring
11	AM-186FD-ES11	Shock Proof Sealing Ring I
12	AM-186FD-ES12	Air Filter Cover
13	AM-186FD-ES13	Sock Proof Seal Assy
14	AM-186FD-ES14	Bolt

