

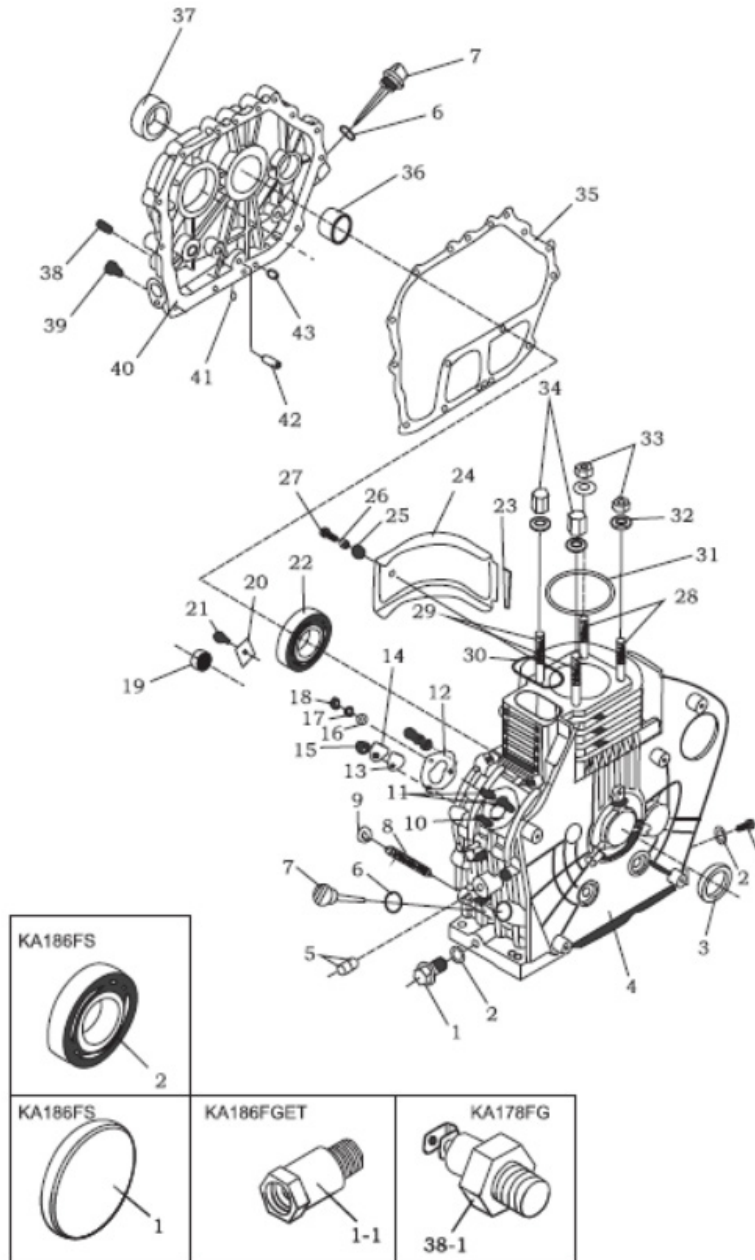
## INTERCULTIVATOR/POWER WEEDER

AM-MPT-1100-9D-CHAMPION NEW

ENGINE PART DIAGRAM



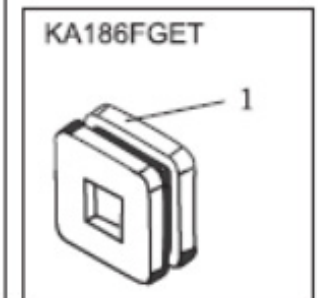
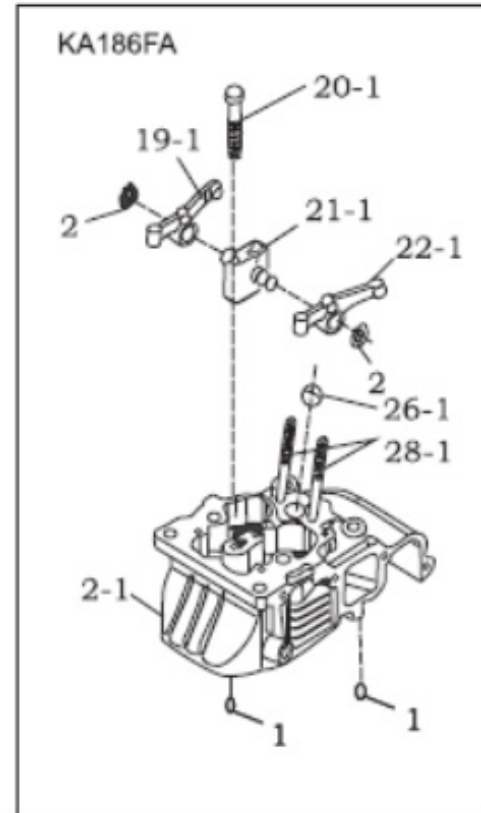
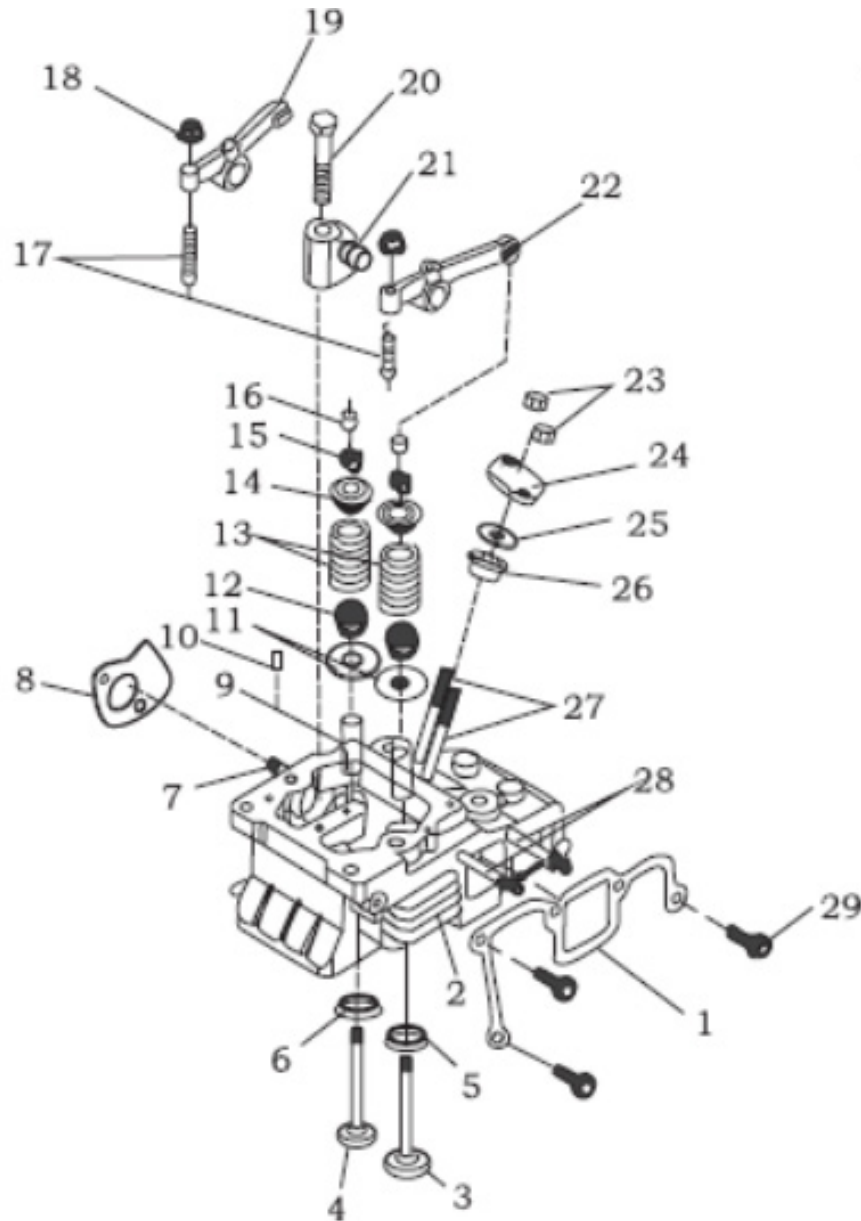
# CYLINDER BLOCK ASSY -A



SL NO	PART NO	DESCRIPTION	SL NO	PART NO	DESCRIPTION
1	AM-186FDM-EA01	Drain Plug Screw	17	AM-186FDM-EA16	GASKET
2	AM-186FDM-EA1.1	CONNECTING BOLT OF DRAIN PLUG	18	AM-186FDM-EA17	GASKET
3	AM-186FDM-EA02	WASHER UNIT OF DRAIN PLUG	19	AM-186FDM-EA18	NUT
4	AM-186FDM-EA03	OIL SEAL	20	AM-186FDM-EA19	NEEDLE BEARING
5	AM-186FDM-EA04	CYLINDER BLOCK	21	AM-186FDM-EA20	THRUST PLATE
6	AM-186FDM-EA05	NEEDLE BEARING	22	AM-186FDM-EA21	BOLT
7	AM-186FDM-EA06	O-RING	23	AM-186FDM-EA22	BALL BEARING
8	AM-186FDM-EA07	OIL DIPSTICK	24	AM-186FDM-EA23	CUSHION BLOACKING
9	AM-186FDM-EA08	FUEL CONTYROLLER ASSY	25	AM-186FDM-EA24	GOVERNOR
10	AM-186FDM-EA09	NUT	26	AM-186FDM-EA25	VIBRATION ISOLATION CUSHION BLOCK
11	AM-186FDM-EA10	FUEL INECTION PUMP-SHORT	27	AM-186FDM-EA26	SHEATH
12	AM-186FDM-EA11	FUEL INECTION PUMP-LONG	28	AM-186FDM-EA27	BLOT
13	AM-186FDM-EA12	FUEL INECTION PUMP WASHER	29	AM-186FDM-EA28	CYLINDER HEAD STUD BOLT-SHORT
14	AM-186FDM-EA13	JOINT WASHER	30	AM-186FDM-EA29	CYLINDER HEAD STUD BOLT- LONG
15	AM-186FDM-EA14	SEAL PLATE	31	AM-186FDM-EA30	SHEET GASKET
16	AM-186FDM-EA15	NUT	32	AM-186FDM-EA31	CYLINDER HEAD SHIM

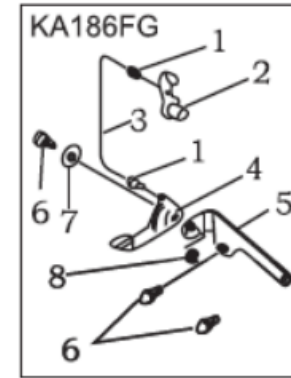
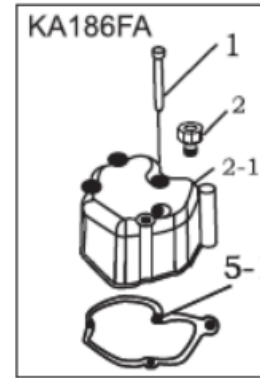
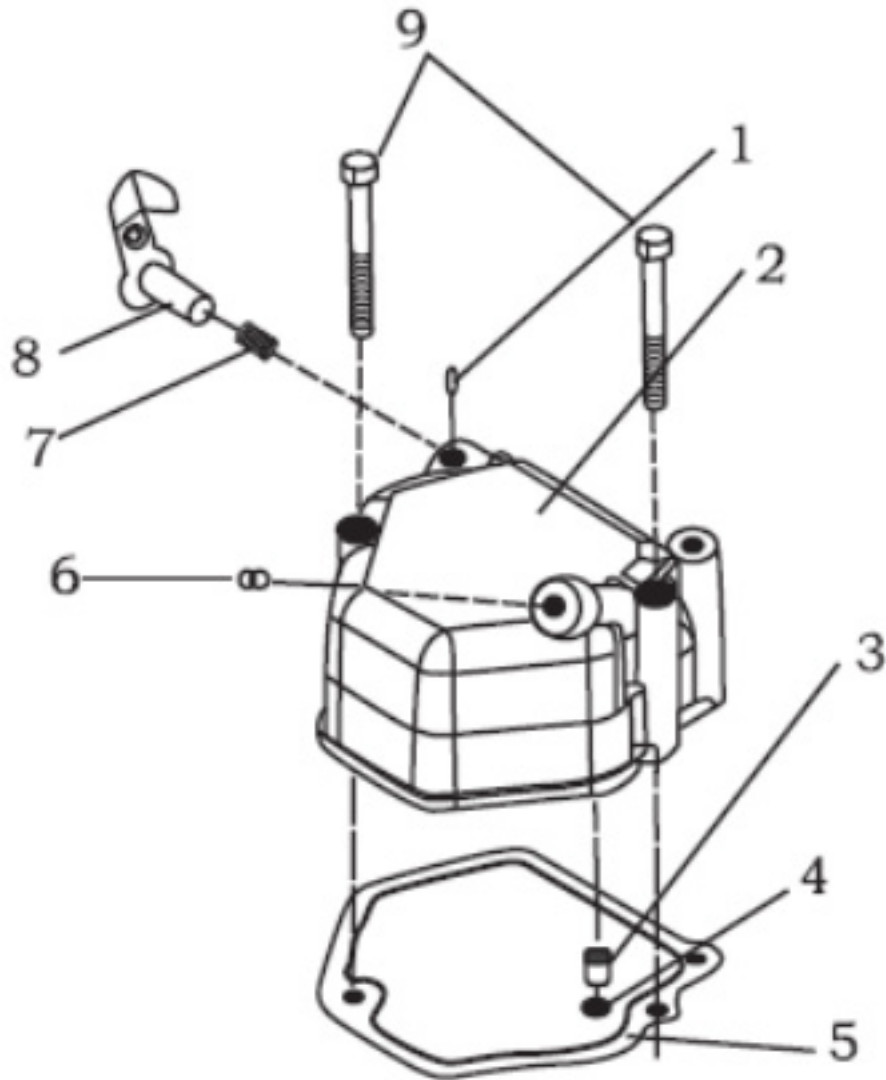
SL NO	PART NO	DESCRIPTION	SL NO	PART NO	DESCRIPTION
33	AM-186FDM-EA33	CYLINDER HEAD NUT THIN			
34	AM-186FDM-EA34	CYLINDER HEAD NUT THICK			
35	AM-186FDM-EA35	CRANK CASE COVER WASHER			
36	AM-186FDM-EA36	BALL BEARING			
37	AM-186FDM-EA37	OIL SEAL			
38	AM-186FDM-EA38	HEXAGON SCREW			
39	AM-186FDM-EA38.1	OIL INDICATOR			
40	AM-186FDM-EA39	BOLT			
41	AM-186FDM-EA40	CRANK CASE COVER			
42	AM-186FDM-EA41	PLUNGER			
43	AM-186FDM-EA42	OIL CONDUIT			
44	AM-186FDM-EA43	PIN			
45	AM-186FDM-EA44	BLOCK			
46	AM-186FDM-EA45	BALL BEARING			

# CYLINDER HEAD ASSY- B



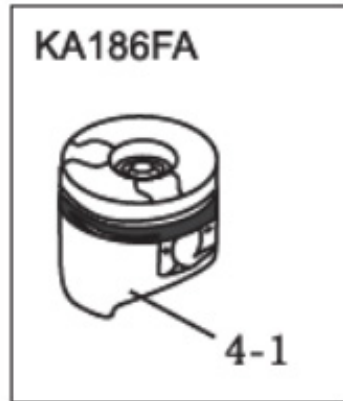
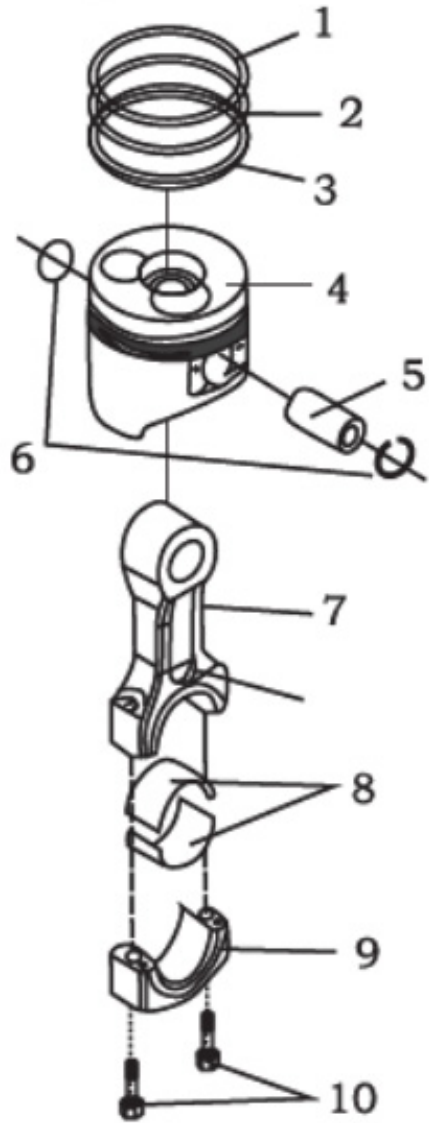
SL NO	PART NO	DESCRIPTION	SL NO	PART NO	DESCRIPTION
1	AM-186FDM-EB01	INTAKE PIPE SHIM	19	AM-186FDM-EB18	VALVE CLEARANCE ADJUSTMENT LOCKING NUT
2	AM-186FDM-EB02	CYLINDER COVER	20	AM-186FDM-EB19	EXHAUST VALVE ROCKER ARM
3	AM-186FDM-EB2.1	CYLINDER COVER	21	AM-186FDM-EB19.1	EXHAUST VALVE ROCKER ARM
4	AM-186FDM-EB03	INTAKE VALVE	22	AM-186FDM-EB20	SET BLOT OF ROCKER ARM SEAT
5	AM-186FDM-EB04	EXHAUST VALVE	23	AM-186FDM-EB20.1	SET BLOT OF ROCKER ARM SEAT
6	AM-186FDM-EB05	INLET VALVE SEAT	24	AM-186FDM-EB21	ROCKER ARM SEAT ASSY
7	AM-186FDM-EB06	EXHAUST VALVE SEAT	25	AM-186FDM-EB21.1	ROCKER ARM SEAT ASSY
8	AM-186FDM-EB07	STUD	26	AM-186FDM-EB22	INTAKE VALVE ROCKER ARM
9	AM-186FDM-EB08	EXHAUST PIPE WASHER	27	AM-186FDM-EB22.1	INTAKE VALVE ROCKER ARM
10	AM-186FDM-EB09	VALVE CONDUIT	28	AM-186FDM-EB23	NUT
11	AM-186FDM-EB10	PIN	29	AM-186FDM-EB24	FUEL INJETION VALVE RETAINER
12	AM-186FDM-EB11	VALVE SPRING GASKET	30	AM-186FDM-EB25	HEAT INSULATOR GASKET
13	AM-186FDM-EB12	VALVE CONDUIT OIL SEAL	31	AM-186FDM-EB26	HEAT INSULATOR
14	AM-186FDM-EB13	VALVE SPRING	32	AM-186FDM-EB26.1	HEAT INSULATOR
15	AM-186FDM-EB14	VALVE SPRING SEAT	33	AM-186FDM-EB27	STUD
16	AM-186FDM-EB15	VALVE RETAINING CLIP	34	AM-186FDM-EB27.1	STUD
17	AM-186FDM-EB16	VALVE ADJUSTINH CUSHION	35	AM-186FDM-EB28	STUD
18	AM-186FDM-EB17	VALVE CLEARANCE ADJUSTING SCREW	36	AM-186FDM-EB29	STUD

# CYLINDER HEAD ASSAMBLEY - C



SL NO	PART NO	DESCRIPTION
1	AM-186FDM-EC01	PIN
2	AM-186FDM-EC02	CYLINDER HEAD COVER
3	AM-186FDM-EC03	CYLINDER HEAD COVER
4	AM-186FDM-EC04	BREATHER SEAT
5	AM-186FDM-EC05	O- RING
6	AM-186FDM-EC06	CYLINDER HEAD COVER WASHER
7	AM-186FDM-EC07	CYLINDER HEAD COVER WASHER
8	AM-186FDM-EC08	PLUNGER
9	AM-186FDM-EC09	DECOMPRESSING SPRING
10	AM-186FDM-EC10	DECOMPRESSING SHAFT ASSY
11	AM-186FDM-EC11	BOLT

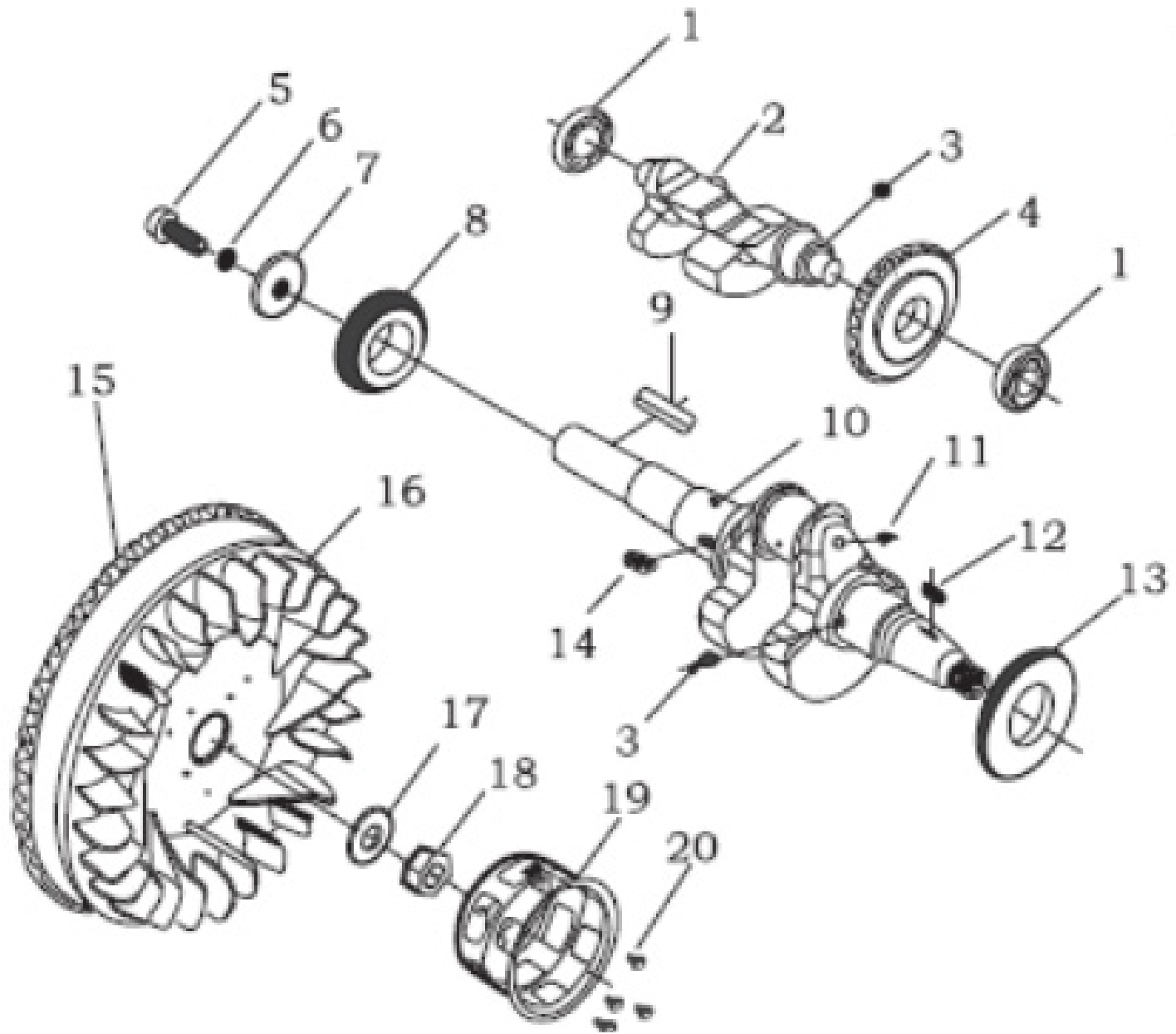
# PISTON & CONNECTING ROD - D



SL NO	PART NO	DESCRIPTION
1	AM-186FDM-ED01	FIRST AIR RING
2	AM-186FDM-ED02	SECOND AIR RING
3	AM-186FDM-ED03	OIL RING ASSY
4	AM-186FDM-ED04	PISTON
5	AM-186FDM-ED4.1	PISTON
6	AM-186FDM-ED05	PISTON PIN
7	AM-186FDM-ED06	RETAINER RING
8	AM-186FDM-ED07	Connecting rod bolt
9	AM-186FDM-ED08	Connecting Rod shaft bushing
10	AM-186FDM-ED09	Connecting Rod Cover
11	AM-186FDM-ED10	Connecting Rod Bolt

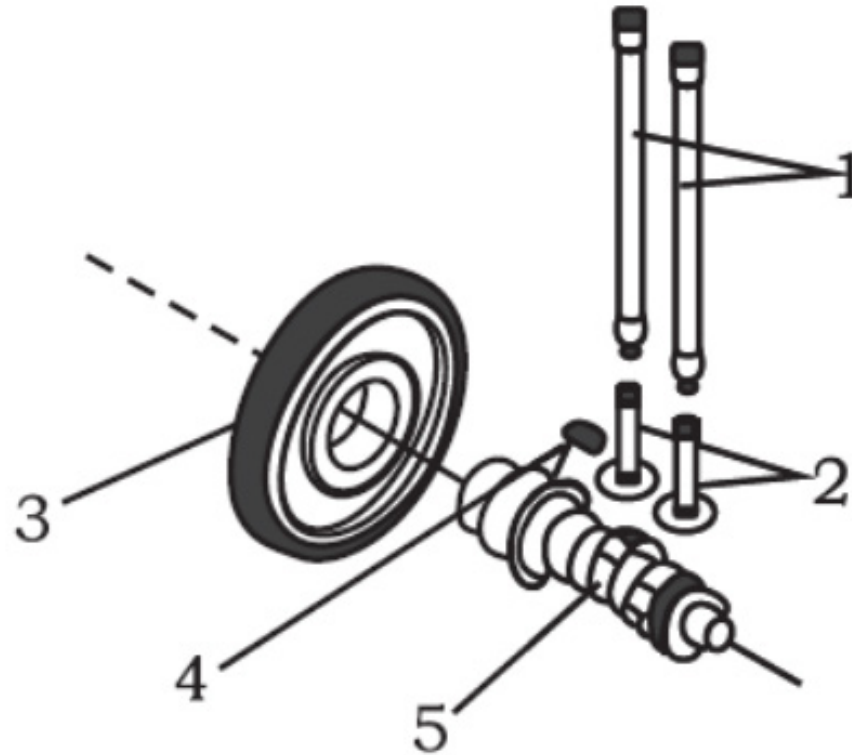


# Crankshaft & Flywheel Assy - E



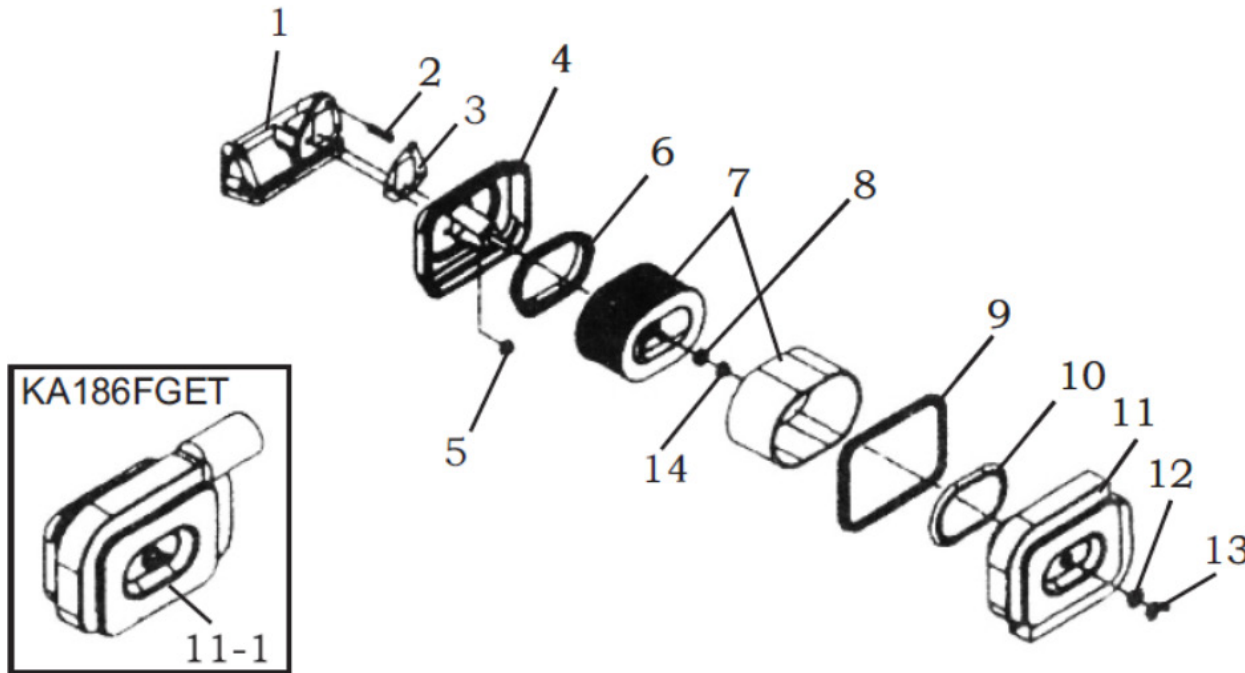
SL NO	PART NO	DESCRIPTION	SL NO	PART NO	DESCRIPTION
1	AM-186FDM-EE01	Ball Bearing	17	AM-186FDM-EE17	Flywheel nut gasket
2	AM-186FDM-EE02	Balance Shaft	18	AM-186FDM-EE18	Flywheel Nut
3	AM-186FDM-EE03	Key	19	AM-186FDM-EE19	Starting Ratchet Reel
4	AM-186FDM-EE04	Timing Gear of Blalce shaft	20	AM-186FDM-EE20	Bolt
5	AM-186FDM-EE05	Out put End set Bolt			
6	AM-186FDM-EE06	Gasket			
7	AM-186FDM-EE07	Output End Gasket			
8	AM-186FDM-EE08	Crankshaft Timing Gear			
9	AM-186FDM-EE09	Key			
10	AM-186FDM-EE10	Crankshaft			
11	AM-186FDM-EE11	Steel Ball			
12	AM-186FDM-EE12	Key			
13	AM-186FDM-EE13	Drive Gear of Balance Shaft			
14	AM-186FDM-EE14	Key			
15	AM-186FDM-EE15	Flywheel Tooth			
16	AM-186FDM-EE16	Fly wheel			

## Camshaft Assy - F



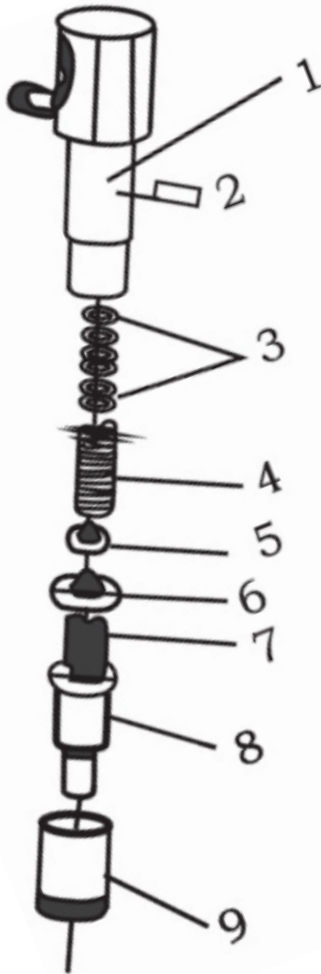
SL NO	PART NO	DESCRIPTION
1	AM-186FDM-EF01	Valve Push Rod Assy
2	AM-186FDM-EF02	Valve Tappet
3	AM-186FDM-EF03	Camshaft Timing Gear
4	AM-186FDM-EF04	Key
5	AM-186FDM-EF05	Camshaft
6	AM-186FDM-EF5.1	Camshaft

# Air Intake System -G



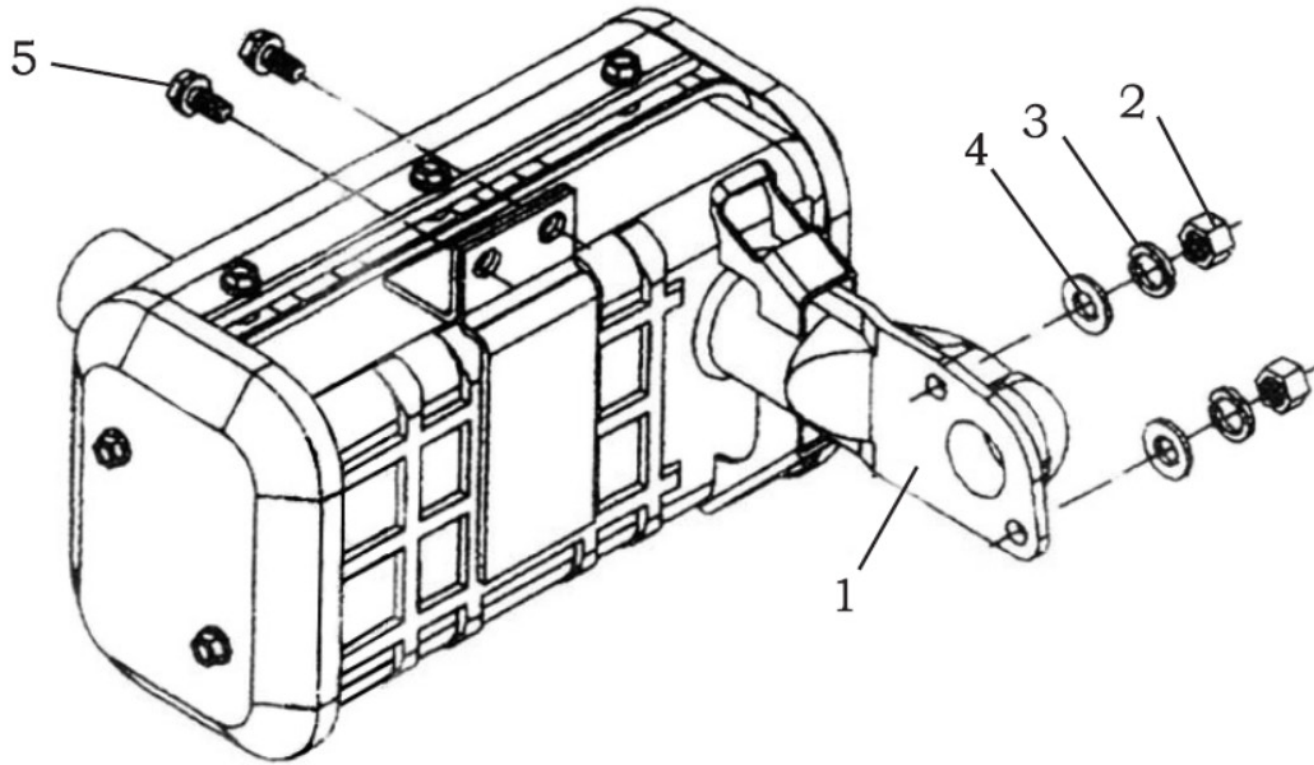
SL NO	PART NO	DESCRIPTION	SL NO	PART NO	DESCRIPTION
1	AM-186FDM-EG01	Inlet Pipe	9	AM-186FDM-EG09	Sheet Gasket
2	AM-186FDM-EG02	Tighting Bolt of Air Chamber	10	AM-186FDM-EG10	Shockproof Sheet Gasket I
3	AM-186FDM-EG03	Air Cleaner washer	11	AM-186FDM-EG11	Air Cleaner Cover
4	AM-186FDM-EG04	Air cleaner bottom case assy	11.1	AM-186FDM-EG11.1	Air Cleaner Cover
5	AM-186FDM-EG05	Nut	12	AM-186FDM-EG12	Shockproof Seal Assy
6	AM-186FDM-EG06	Shockproof Sheet Gasket II	13	AM-186FDM-EG13	Nut
7	AM-186FDM-EG07	Air cleaner Element Assy	14	AM-186FDM-EG14	Nut
8	AM-186FDM-EG08	Shockproof Unit			

## Fuel Injection Valve Assy - H



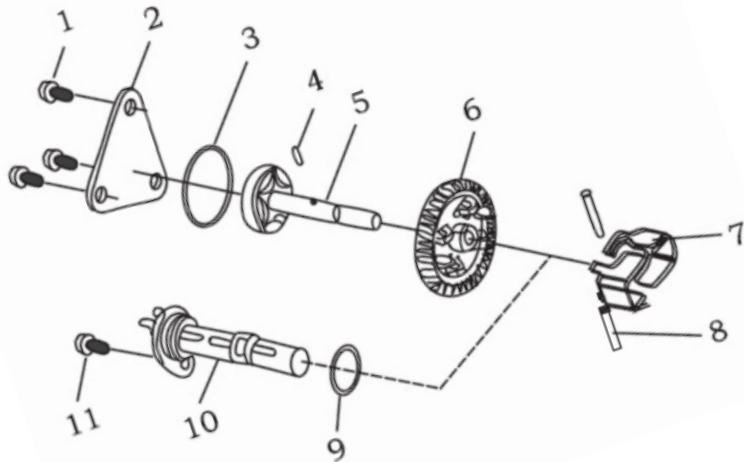
SL NO	PART NO	DESCRIPTION
1	AM-186FDM-EH01	Fuel Injection Valve Block
2	AM-186FDM-EH02	Pin
3	AM-186FDM-EH03	Volt adjustment Washer
4	AM-186FDM-EH04	Volt adjustment Spring
5	AM-186FDM-EH05	Mandril
6	AM-186FDM-EH06	Intermediate Block
7	AM-186FDM-EH07	Locating Pin
8	AM-186FDM-EH08	Fuel Injection Nozzel
9	AM-186FDM-EH09	Nozzel Forcing Niut

## Muffler Assy - J



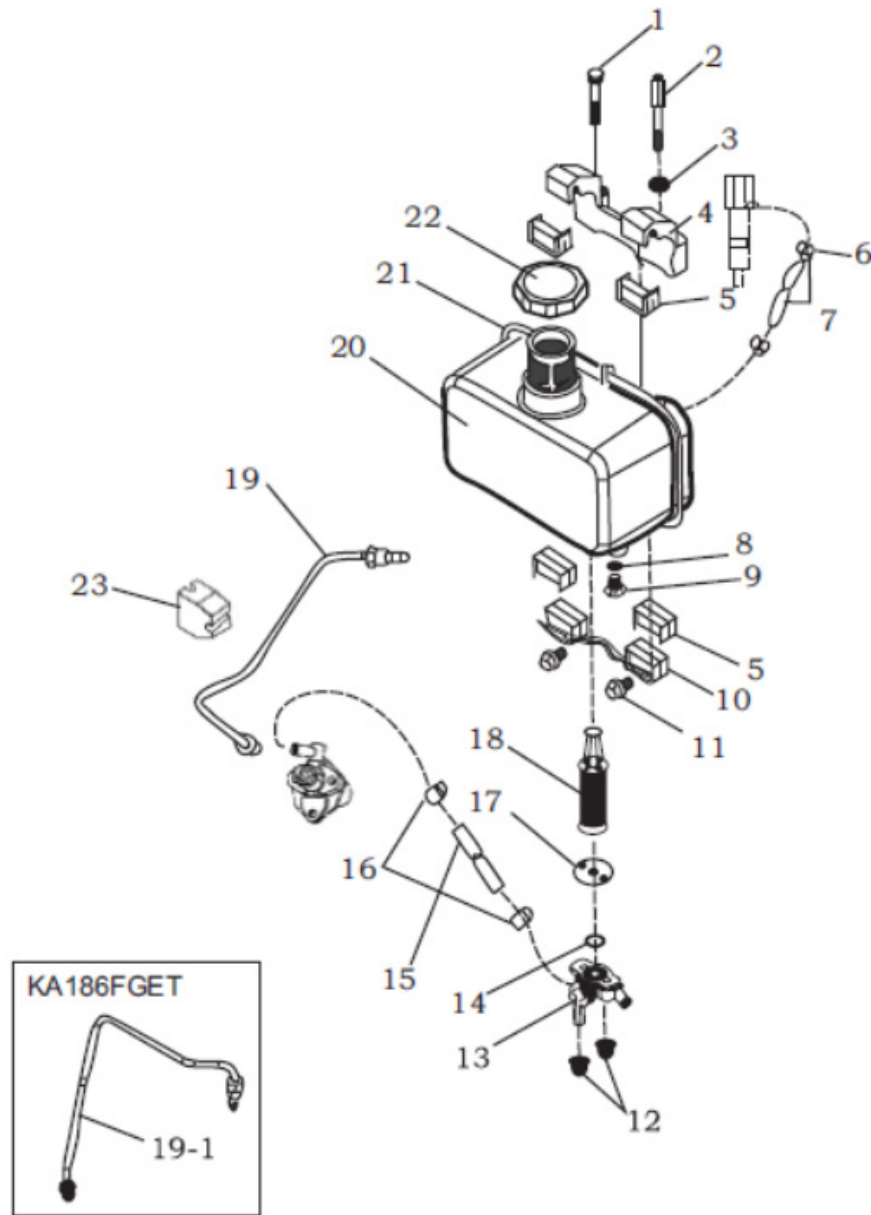
SL NO	PART NO	DESCRIPTION
1	AM-186FDM-EJ01	Muffler Assy
2	AM-186FDM-EJ02	Bolt
3	AM-186FDM-EJ03	Gasket
4	AM-186FDM-EJ04	Gasket
5	AM-186FDM-EJ05	Bolt

## Lubricating System - K



SL NO	PART NO	DESCRIPTION
1	AM-186FDM-EK01	Bolt
2	AM-186FDM-EK02	Lube oil Pump Cover
3	AM-186FDM-EK03	O-Ring
4	AM-186FDM-EK04	Pin
5	AM-186FDM-EK05	Engine Oil Pump Unit
6	AM-186FDM-EK06	Drive gear of Lube oil pump
7	AM-186FDM-EK07	Flying weight
8	AM-186FDM-EK08	Flying weight pin
9	AM-186FDM-EK09	O-Ring
10	AM-186FDM-EK10	Lube oil Filter Assy
11	AM-186FDM-EK11	Bolt

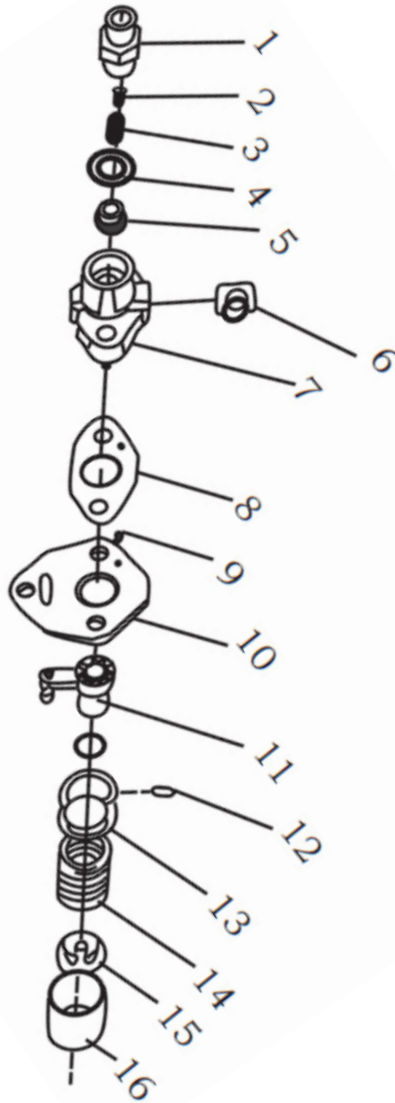
# FUEL SYSTEM - L





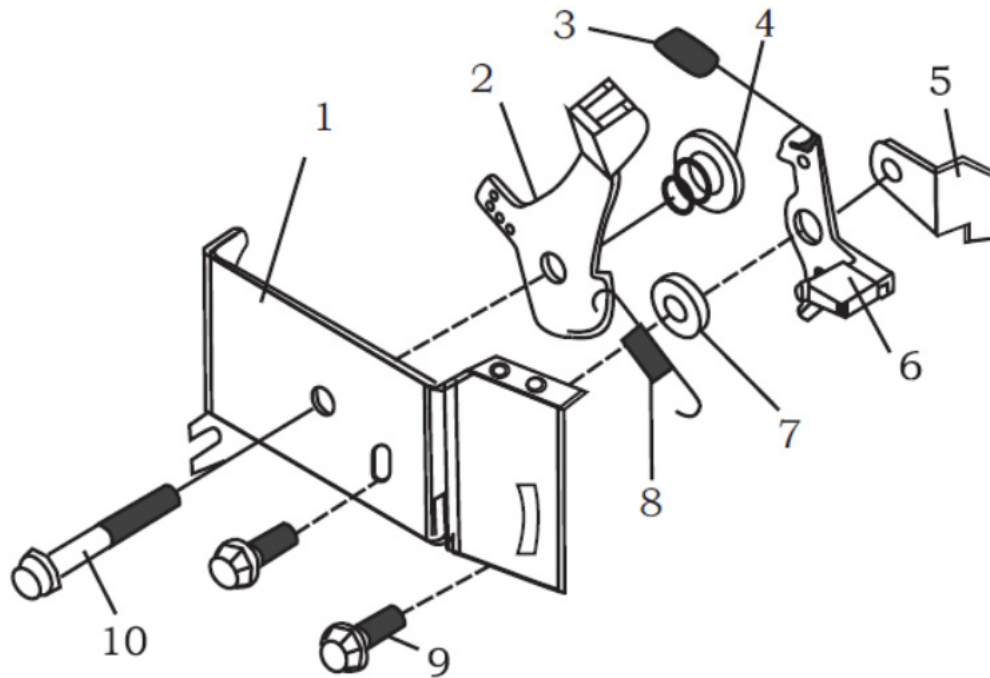
SL NO	PART NO.	DESCRIPTION	SLNO	PART NO.	DESCRIPTION
1	AM-186FDM-EL01	Bolt	17	AM-186FDM-EL17	Fuel Filter Washer
2	AM-186FDM-EL02	Set Bolt of Fuel Tank	18	AM-186FDM-EL18	Element Assy
3	AM-186FDM-EL03	Gasket	19	AM-186FDM-EL19	High presure Fuel pipe Unit
4	AM-186FDM-EL04	Fuel Tank Upper Support	20	AM-186FDM-EL20	High presure Fuel pipe Unit
5	AM-186FDM-EL05	Cushion	21	AM-186FDM-EL21	Fuel Tank weldment Assy
6	AM-186FDM-EL06	Fuel return Pipe	22	AM-186FDM-EL22	Fuel Filler screen
7	AM-186FDM-EL07	Fuel return Pipe Clip	23	AM-186FDM-EL23	Fuel Tank Cap
8	AM-186FDM-EL08	Drain Bolt	24	AM-186FDM-EL24	Cushion
9	AM-186FDM-EL09	Bolt			
10	AM-186FDM-EL10	Fuel tank Lower support			
11	AM-186FDM-EL11	Nut			
12	AM-186FDM-EL12	Nut			
13	AM-186FDM-EL13	Fuel TankSwitch Assy			
14	AM-186FDM-EL14	O- Ring			
15	AM-186FDM-EL15	Fuel pipe			
16	AM-186FDM-EL16	Clip			

# Fule Injection Pump Assy -M



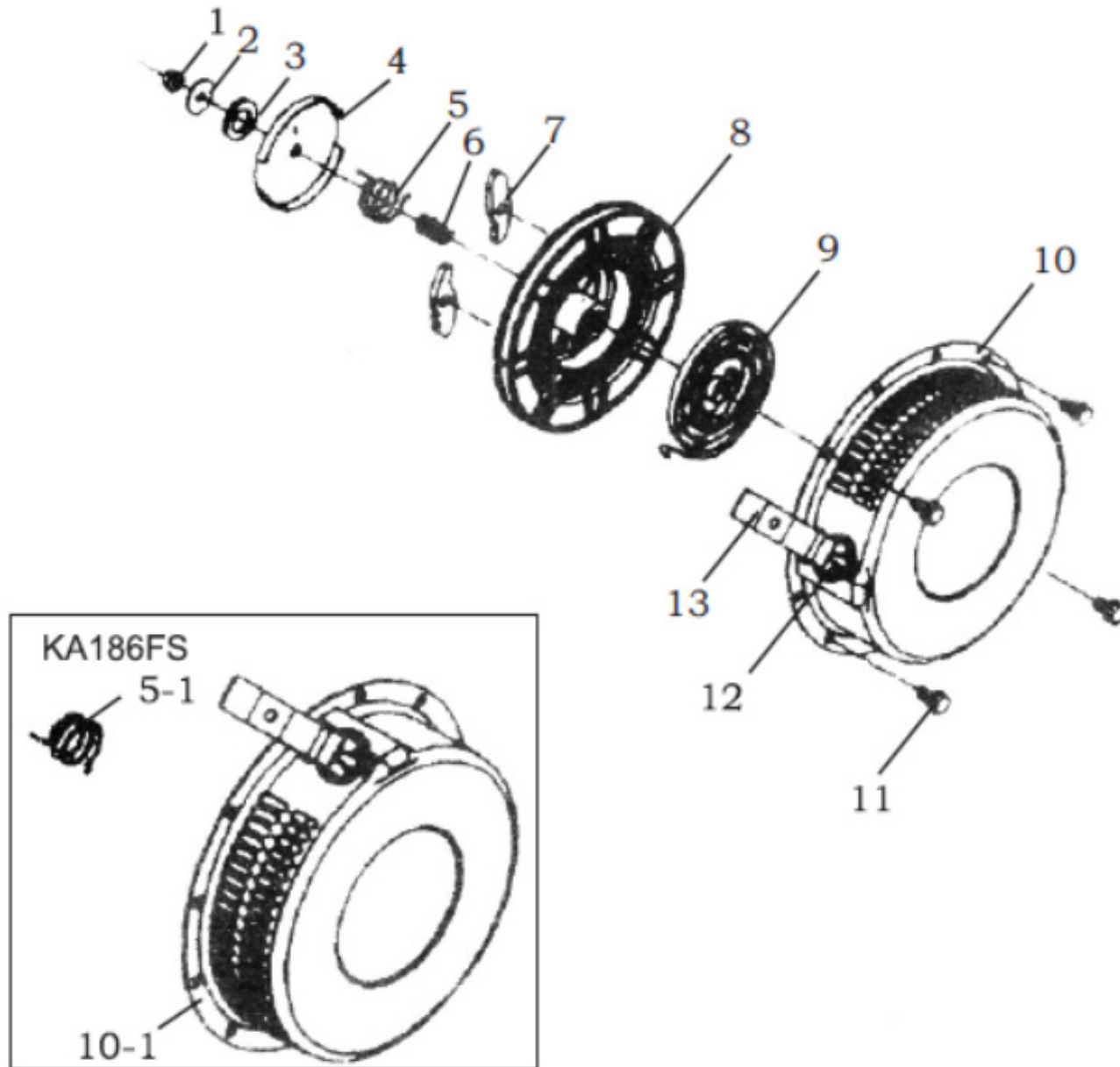
SL NO	PART NO.	DESCRIPTION
1	AM-186FDM-EN01	Control handle Support
2	AM-186FDM-EN02	Control handle
3	AM-186FDM-EN03	Return Spring I
4	AM-186FDM-EN04	Control Handle Shaft
5	AM-186FDM-EN05	Retainer Weldment Assy
6	AM-186FDM-EN06	Engine Shutoff Handle
7	AM-186FDM-EN07	Sheath
8	AM-186FDM-EN08	Governor Spring
9	AM-186FDM-EN09	Bolt
10	AM-186FDM-EN10	Bolt

# Governor & Control Assy - N



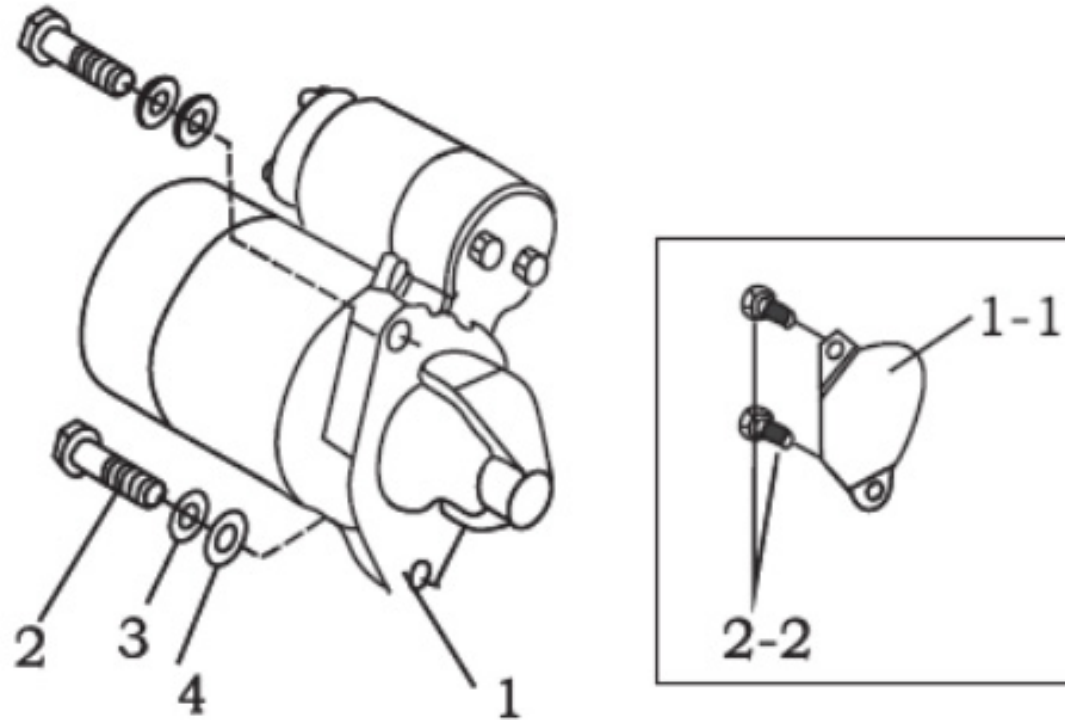
SL NO	PART NO.	DESCRIPTION
1	AM-186FDM-EN01	Control handle Support
2	AM-186FDM-EN02	Control handle
3	AM-186FDM-EN03	Return Spring I
4	AM-186FDM-EN04	Control Handle Shaft
5	AM-186FDM-EN05	Retainer Weldment Assy
6	AM-186FDM-EN06	Engine Shutoff Handle
7	AM-186FDM-EN07	Sheath
8	AM-186FDM-EN08	Governor Spring
9	AM-186FDM-EN09	Bolt
10	AM-186FDM-EN10	Bolt

# Recoil Starter Assy - P



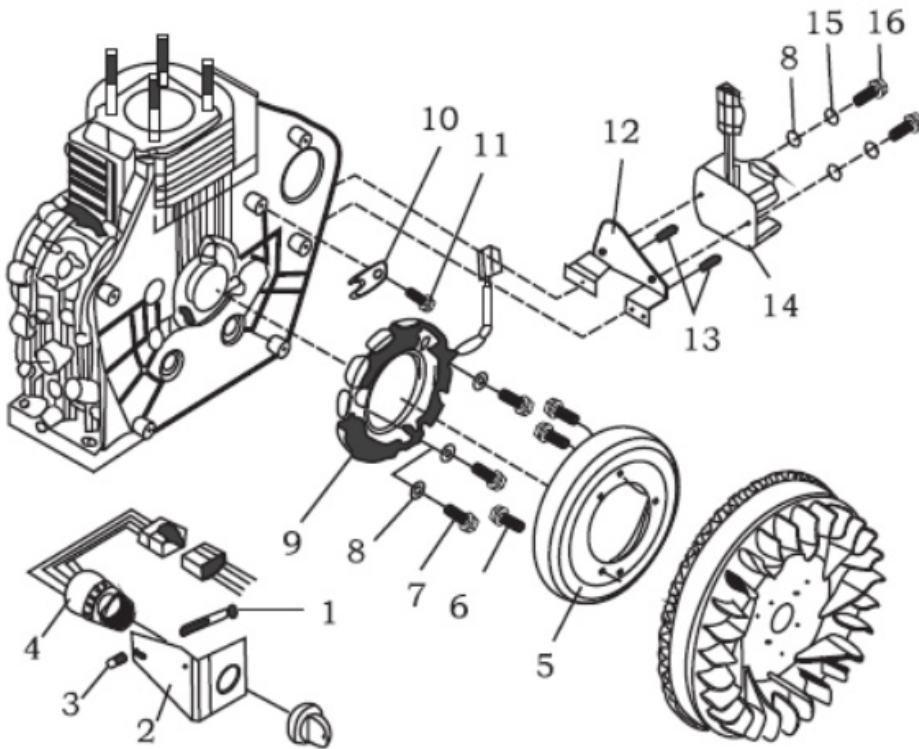
SL NO	PART NO.	DESCRIPTION	SLNO	PART NO.	DESCRIPTION
1	AM-186FDM-EP01	Nut			
2	AM-186FDM-EP02	Gasket			
3	AM-186FDM-EP03	Friction plate			
4	AM-186FDM-EP04	Starter Ratchet Reel			
5	AM-186FDM-EP05	Return Spring			
6	AM-186FDM-EP5.1	Torsion Spring			
7	AM-186FDM-EP06	Compression spring			
8	AM-186FDM-EP07	Ratchet			
9	AM-186FDM-EP08	Starter reel			
10	AM-186FDM-EP09	Spring			
11	AM-186FDM-EP10	Outer Case Assy			
12	AM-186FDM-EP10.1	Outer Case Assy			
13	AM-186FDM-EP11	Bolt			
14	AM-186FDM-EP12	Starter Rope			
15	AM-186FDM-EP13	Starter Handle			

# Starting Motor Assy -Q



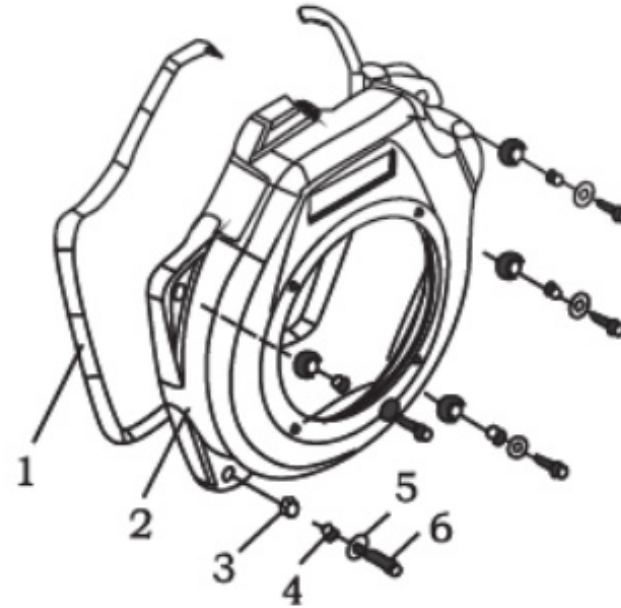
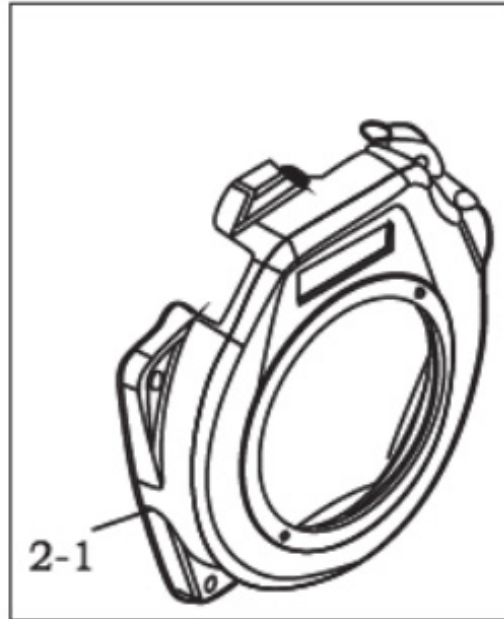
SL NO	PART NO.	DESCRIPTION	SLNO	PART NO.	DESCRIPTION
1	AM-186FDM-EQ01	Starting Motor Assy			
2	AM-186FDM-EQ1.1	Engine Motor hole cover board			
3	AM-186FDM-EQ02	Bolt			
4	AM-186FDM-EQ2.2	Bolt			
5	AM-186FDM-EQ03	Spring Gasket			
6	AM-186FDM-EQ04	Gasket			

# Flywheel Alternator Assy - R



SL NO	PART NO.	DESCRIPTION
1	AM-186FDM-ER01	Bolt
2	AM-186FDM-ER02	Switch board of Electric Starter
3	AM-186FDM-ER03	Long Gasket
4	AM-186FDM-ER04	Starting Key Assy
5	AM-186FDM-ER05	Rotator Assy
6	AM-186FDM-ER06	Screw
7	AM-186FDM-ER07	Bolt
8	AM-186FDM-ER08	Gasket
9	AM-186FDM-ER09	Stator Assy
10	AM-186FDM-ER10	Retainer
11	AM-186FDM-ER11	Screw
12	AM-186FDM-ER12	Support of Governor
13	AM-186FDM-ER13	Screw
14	AM-186FDM-ER14	Volt Regulator Assy
15	AM-186FDM-ER15	Gasket
16	AM-186FDM-ER16	Bolt

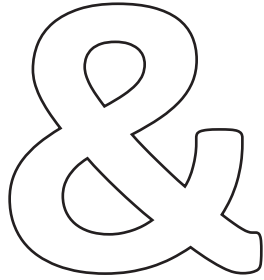
# Fan Cover Assy-S



SL NO	PART NO.	DESCRIPTION	SLNO	PART NO.	DESCRIPTION
1	AM-186FDM-ES01	Cushion			
2	AM-186FDM-ES02	Fan Cover Weldment Assy			
3	AM-186FDM-ES2.1	Fan Cover Weldment Assy			
4	AM-186FDM-ES03	Cushion Sheath			
5	AM-186FDM-ES04	Gasket			
6	AM-186FDM-ES05	Bolt			



# DOS

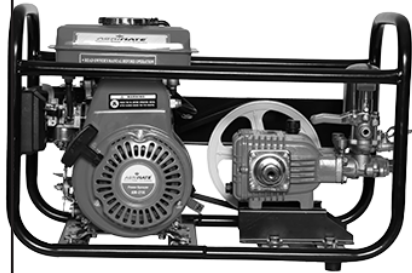
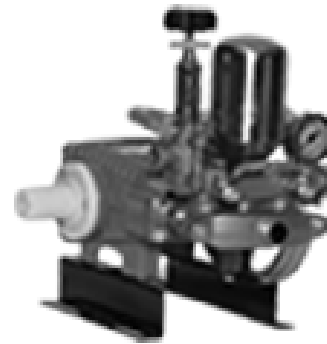


# DONTs

1. Always read the instruction manual supplied along with the equipments and understand the correct installation and operating procedures before attempting to use the equipments.
2. It is important to use the personal protection equipments such as head helmet with visor, ear defenders, goggles, safety gloves, cut resistant shoes, trousers and jackets while operating potentially dangerous machines
3. Avoid untrained persons using the equipments. Children must not be allowed to handle these equipments
4. Always use genuine spares and accessories in repairs and usage to derive maximum life of the equipments.
5. Always keep the equipments in good working condition to minimize loss of output as well as to reduce the pollution and save the environment
6. Do not use the machine within range of persons unless they wear protective clothing
7. Do not operate the machine when fatigued or under the influence of alcohol or drugs
8. When the machine is running, please maintain a constant water supply. Without water circulation will damage the sealing rings of the machine.
9. For more query kindly contact for our Service Center/Dealer/ franchise

# Agrimate Army For Pest Control

ANY WHERE - ANY TIME - ANY CROP



Marketed by:  
**ratnagiri  
impex**  
BRINGING YOU THE FUTURE... NOW

**RATNAGIRI IMPEX PVT., LTD.,**

Annapurna House, #1 / 1G, 7th Cross, New  
Guddadahalli

Mysore Road, Bangalore - 560 026

Missed Call : 7393 938 938

Email: [ask@agrimart.in](mailto:ask@agrimart.in)