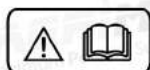
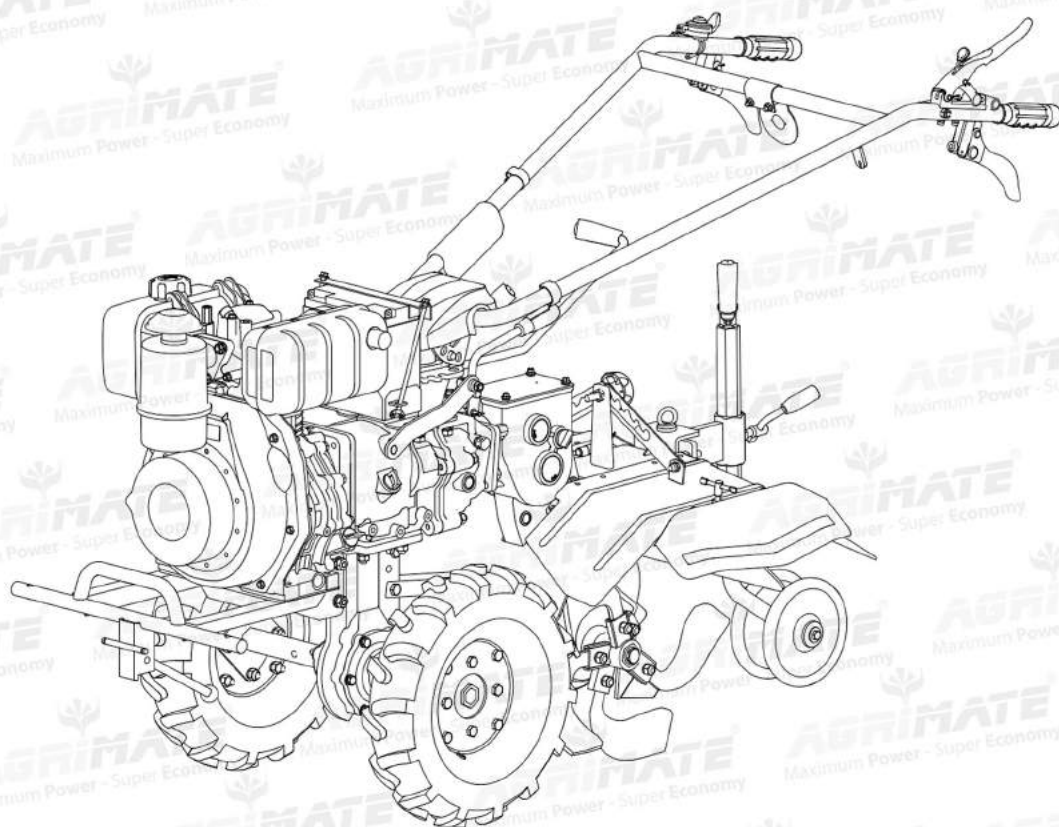


USER MANUAL

AGRIMATE
Maximum Power - Super Economy

AGRIMATE INTER-CULTIVATOR AM-2620-DGB-6D/9D



BEFORE OPERATING THIS MACHINE,
PLEASE READ THESE INSTRUCTIONS CAREFULLY

DISCLAIMER: DUE TO CONSTANT UPGRADATION, FEATURES AND SPECIFICATIONS ARE SUBJECT TO CHANGE WITHOUT NOTICE



CARING AND GROWING TOGETHER SINCE 1999

Dear Sir/Madam,

Thank you for choosing Agrimate product. You are the proud owner of high technology and durable machine. Trust that our franchisee/dealer installed the product and explained you about the usage and service instructions. Please visit our authorised dealer for your future requirement of our other equipments, genuine spares, accessories and service. Service coupons are attached with this manual and you can avail free service.

About Ratnagiri

We import and market of high quality of agriculture wide range of equipment's Which we are selling through our authorized franchisee or dealer network. We are in this field from past 20 years serving the former community. For further details, you may please visit our website www.agrimart.in.

Range of Brands



Our Retail Formats



Agriculture | Horticulture | Sericulture | Plantations | Forestry | Garden | Health care

Foreword

Thank you for purchasing our company's cultivator.

- ◆ This manual is for AM-2620-DGB-6D/9D cultivator operation and maintainance.
- ◆ This manual contains information on operation and maintenance of the AM-2620-DGB-6D/9D inter-cultivator, which is based on the most recent product information available at the time of approval for printing.
- ◆ We reserve the right to make amendments without advance notice and without incurring any obligation for sequences.
- ◆ No part of this publication maybe reproduced without written permission.
- ◆ This manual should be considered a permanent part of the Inter-Cultivator, and remain with it if it is resold.
- ◆ The products sold at each stage may be inconsistent with the manual. Please refer to the actual products when purchasing.
- ◆ Executive standard:Q/WM56-2017

Warning:

- ◆ Any changes of cultivator by the operators or dealers at their own are forbidden.
- ◆ This cultivator is not allowed to connect trailer.
- ◆ The cultivator must be used when the emergency stop handle is normal and reliable. Users or dealers are strictly prohibited to use the cultivator after removing the device.
- ◆ Any damages or injuries called by disobey the above terms, our company will be free from any responsibilities and warranty services for this machine will be terminated accordingly.

Safety information

Safety is very important for you and others, important safety information has been written down in both manual and machine. Please read it carefully.

Safety information gives you warning that it may bring potential danger to yourself and others. Every piece of safety information is consist of the symbol "!" and "danger, warning, attention".

- ◆ Please pay special attention to the meanings of the above-mentioned identifiers.

! Danger: Serious injuries, even death will be caused, if don't this indication in the manual.

! Warning: Device damage and people injures/death may be caused, if don't follow this indication in the manual.

! Attention: Device damage and injures may be caused, if don't follow this indication in the manual.

Damage prevention

You can see other important information marked with "ATTENTION".

ATTENTION: Device damage will be caused, if don't follow the indication in the manual.

Safety prevention



If Inter-Cultivator is operated follow those indicated in the manual, it will work safely and reliably. Before operating the inter-cultivator, please read this manual carefully. Otherwise, injures and device damage will be caused.

Attention

- When engine starting, the shift lever should be in the disengaged position with belt.
- When the machine is working, please pay attention to safety!
- Be careful about the rotary blades, because they may hurt you!
- Fuel and lube oil must be clean and specified in the manual.
- Before changing gear, should release the tension roller with the belt(The machine clutch device is comprised of tension roller and belt.), and turn the engine speed to slow speed. Reverse in the slow speed circumstance is safer.
- You'd better not use reverse gear while Inter-Cultivator is going up or down a slope

Contents

Chapter I. Safety information and warning	05
Chapter II. Profile of Inter-Cultivator	07
1. Specifications	07
2. General chart	07
Chapter III. Applicable scope	08
1. Ditching	08
2. Earth	09
3. Rotary tillage	09
Chapter IV. Installation method	09
Chapter V. Operations introduction	09
1. Ditching	09
2. Inter-Cultivator adjustment	10
3. Engine start and stop	10
4. Operation	11
5. Operation attention	11
Chapter VI. Maintenance	11
1. Running-in of inter-cultivator	12
2. Technical maintenance table of inter-cultivator	12
3. Technical maintenance of inter-cultivator	12
4. Long-period storage of inter-cultivator	13
Chapter VII. Adjustment methods and data	13
1. Adjustment of clutch cable	13
2. Adjustment of throttle cable	14
3. Adjustment of steering cable	14
Chapter VIII. Troubleshooting	14
1. Common troubles and solutions	14
2. others troubles and solutions	15
Chapter IX. Wearing parts list	15
Chapter X. Accessories	16

Chapter I. Safety information and Warning

◆ 1. Training

- a) Please read this manual carefully, and learn how to operate and use the Inter-Cultivator.
- b) Don't allow children and anyone without proper training to operate this Inter-Cultivator to avoid injury.
- c) Keep all persons (especial the kids) and pets away from the tilling working area.

◆ 2. Preparation

- a) Move all the sundries away from the Inter-Cultivator working area.
- b) Before engine starting, be sure the clutch is disengaged and the shift lever is in the neutral position.
- c) It is not allowed to operate the Inter-Cultivator without wearing proper coat. Wearing the antiskid shoes can improve the stability on the slide surface.
- d) Be careful the fuel, it is extremely flammable.
 - 1) Using the proper tank to store the fuel.
 - 2) It is not allowed to refuel when engine is working or before engine cooled. Refueling the lube oil into the tank is not permitted.
 - 3) Refuel in a well-ventilated area with the engine stopped.
 - 4) Before starting, tightening the fuel cap, and cleaning the spilled fuel.
- e) When engine running, any adjustment is not allowed (except the special adjustment recommended by manufacturer).
- f) Please wear the safety glasses for any operation, such as: preparation, operation and maintenance.

◆ 3. Operation

- a) Keep your hands and feet away from the rotating parts while engine is running.
- b) Be careful to operate on (or across) the cobble road, pavement or highroad. Be careful the potential risk and traffic. Taking the passenger is not allowed.
- c) Please stop the engine and check if the Inter-Cultivator be broken after striking sundries. It is not allowed to start or operate before it is repaired if broken.
- d) Attention the operation floor, avoid slipping down.
- e) Any unusual vibration is the sign of fault should stop and inspect machine immediately.
- f) Stop the engine, while leaving the operation position, cleaning the rotor, doing maintenance, adjusting or checking the machine.
- g) After using, should do the preventive measures, such as: disengage the power output, gear in neutral position, engine off.
- h) Before cleaning, maintenance and inspection, the engine should be off, and ensure all the moving parts to be stopped.
- i) Exhaust contains poisonous gas; don't use the Inter-Cultivator in enclosure space.
- j) No protective devices, no operation the Inter-Cultivator.
- k) Keep away from the kids and pets.
- l) To avoid over tilling depth, and over speed, cause the machine overload.

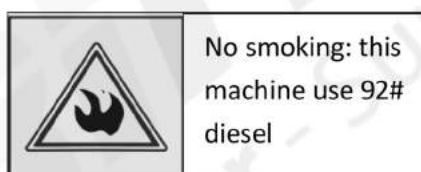
- m) The Inter-Cultivator should not be run in high speed on the slippery road, be careful the back situation when using backward gear.
- n) Keep people away from the machine.
- o) Use only genuine parts or their equivalents (such as: wheel bob-weight, balancing weight, cabin etc).
- p) Don't operate the Inter-Cultivator in poor view or weak light environment.
- q) Be careful to operate on hard land, because the blade into land can push the Inter-Cultivator forward. In this case, release the handle bar, don't try to control it.
- r) Do not use the Inter-Cultivator on slope.
- s) When the Inter-Cultivator goes up or down the slope, should prevent tip-over.

◆ 4. Maintenance and Storage

- a) Keep the Inter-Cultivator, attached device and components in good operation condition.
- b) At set intervals, check if the bolts fasten to ensure the Inter-Cultivator in safe operation condition.
- c) Indoor storage, away from the fire. Cool the engine before indoor storage.
- d) For long-period storage, should keep this manual well, too.
- e) Don't try to repair the machine, otherwise you have the proper tools and disassemble, assemble and maintenance manual.

◆ 5. Safety warning indication

△ Warning



A1 fire safety sign



△ Warning

Bystanders keep a safe distance from the machine, they will be harmed if approaching or touching the machine.



Do not open or remove the protective cover when the machine is working

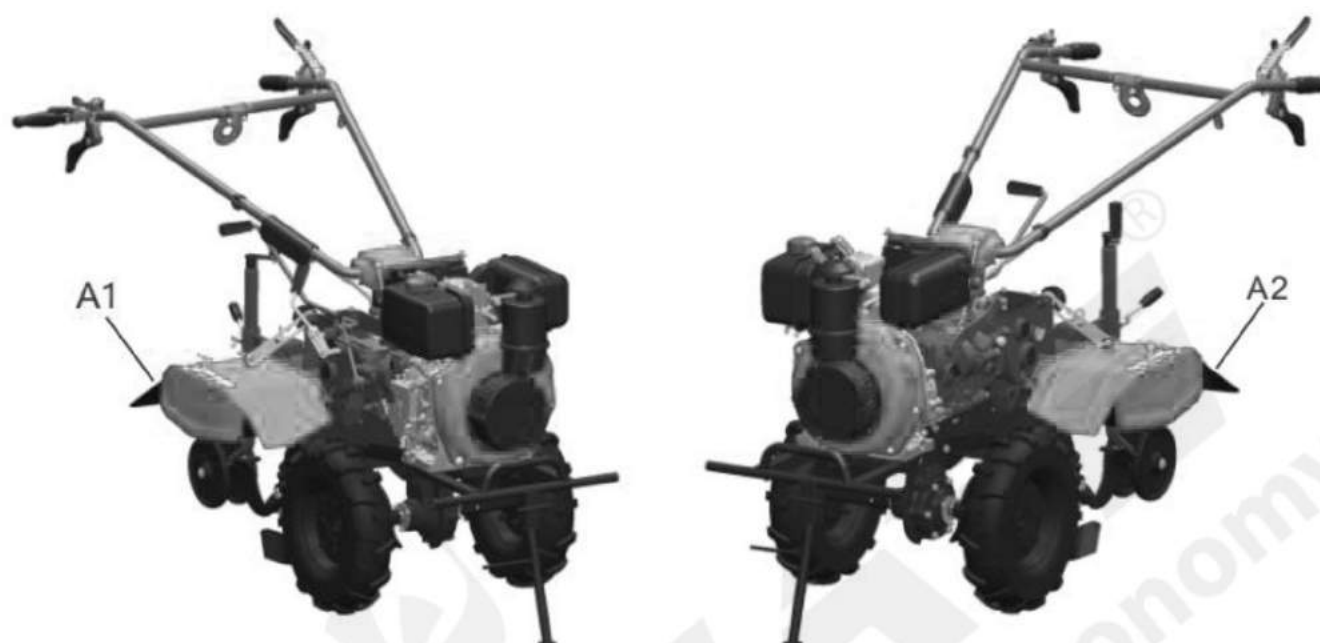


Read user manual carefully before operation, pay attention to safety especially when Inter-Cultivator is



A2 fire safety sign

◆ 6. Safety warning position



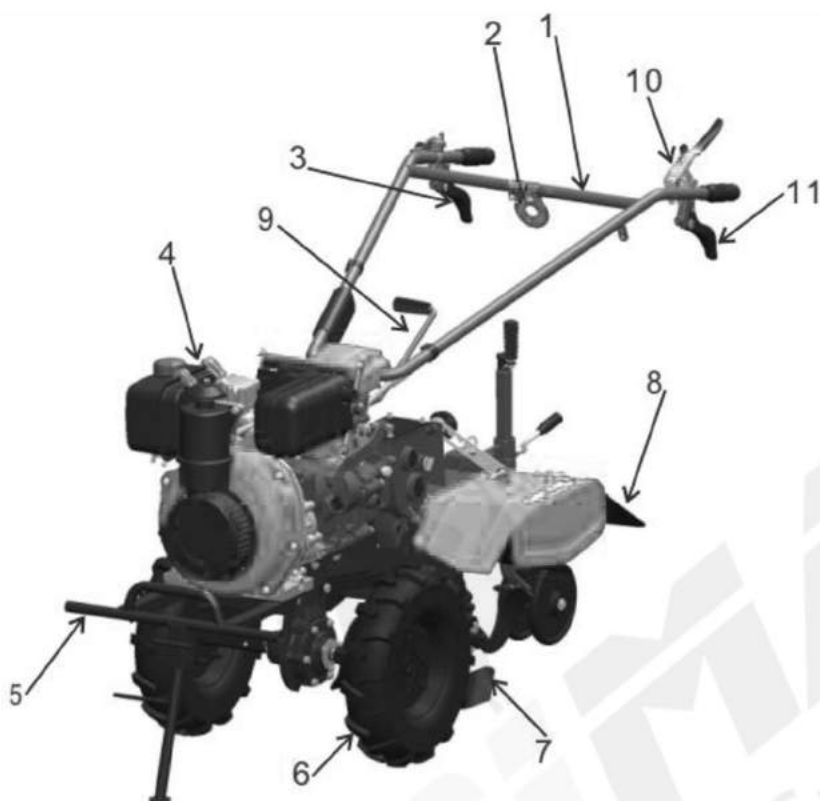
Chapter II. Profile of Inter-Cultivator

◆ 1. Specifications

Item		Data	
		AM-2620-DGB-6D AM-2620-DGB9D	
Inter-Cultivator	Dimension (L*W*H)mm	1480x800x1100	
	Net/Gross Weight(kg)	107/117	
	Driving Model	Gear	
	Gear		
Engine	Model	AM178F	AM186FB
	Bore × Stroke(mm)	78x62	86x72
	Displacement(cc)	296	418
	Rated Power(kw)	4.0	6.3
	Rated Rotation Speed (r/min)	3600	
	Fuel type	Diesel	
Attached with accessories	ditching	type	5pcs/ group, ditching blade
		ditching width(mm)	290
		ditching depth(mm)	≥60
	Cultivating	type	4pcs/ group, cultivating blade
		work width(mm)	620

		work depth(mm)	≥ 100
--	--	----------------	------------

◆ 2. general Chart



1	Handle frame
2	Flameout switch
3	Reverse gear lever
4	Diesel engine
5	Bumper
6	Walking wheel assy
7	Rotary blade assy
8	Fender parts
9	Output clutch lever
10	Clutch handle

Chapter IV. Installation Method

Assembly after unpackaged:

1. Take out the machine and accessories from the package.
2. Fix the body of the Inter-Cultivator, install left, right wheels on both side of the output shaft of walking case, and use pin 8*73 and pin to fix it; then install the rear wheel, adjust height, tighten the locking bolt to secure it.
3. Install ditching (ridging) blade: install the ditching device into the two ends of the output shaft (blade in front) in tillage case, and fix it with pin.
4. Fender (or narrow fender) and side fender installation: attach the left and right fenders to the Inter-Cultivator, install the split pin M8*55 and the lock nuts M8(8 pcs each), and tighten the bolts and nuts with an 8-10mm wrench, install the fender adjustment block to the fender, install the hex bolts M8*16 and lock nuts M8 (2pcs each), then install the side fenders on both sides and tighten the small handle. (if the fender and side fender have been installed to the machine after unpacking, this step can be omitted)
5. Check the whole machine, see if there are no missing parts and other missing parts in the accessory box, and then follow the instructions to perform the next steps.

Chapter V. Operation introduction

Before sending the Inter-Cultivator out of factory, adjusting and debugging is done, for comfortable and easier using, the user should inspect and adjust it again.

◆ 1. Daily Checking

- 1.1 Check all the bolts in the connecting part ensure all of them are tightening.
- 1.2 Checking the handles (throttle, Clutch and gear shifting lever), make them flexible and in the correct position.
- 1.3 Put the shift lever in the neutral gear place.
- 1.4 Add oil:
 - 1 Add lube oil (SAE10W-30) to crankcase as Photo III shows;
 - 2 Put the engine at horizontal position. Insert the dipstick into the filler neck without screwing it in. Get the dipstick out, check the oil level. The oil level should be the mentioned position in the dipstick. (Look at Photo III). for 178F diesel engine, add 1.1L, for 186FB diesel engine, add 1.65L
 - 3 Refuel air cleaner with oil, disassembling the synthetic glass cover tent below the cleaner, and refuel 0.1L #20 oil.
- 1.5 Add fuel: add #0 to fuel tank.
- 1.6 Make preparation following the user manual before starting machine.

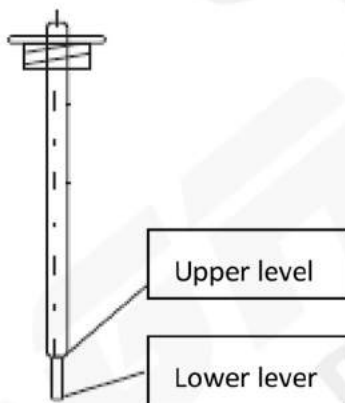


Photo III

Photo III

⚠ Attention

Don't rotate dipstick, don't add lube oil between upper level and lower level.

◆ 2. Inter-Cultivator adjustment

⚠ Attention

Please put the Inter-Cultivator on firm land level before adjusting the handle height to prevent the handle from collapsing accidentally.

2.1 Handle frame adjustment

Adjust the height and direction of handle frame by lock hands.

2.2 Cultivating depth adjustment

Control the tilling depth by adjusting the height of the resistance rod. Rod going down, cultivating depth decreased; Rod going up, tilling depth increased.

◆ 3. Engine start and stop

⚠ Attention

Shift lever must be in the neutral gear position.

3.1 Shift lever must be in the neutral gear position before starting the Inter-Cultivator.

3.2 Start the diesel engine following the steps of user manual.

3.3 Engines should run in the low speed (1500-2000r/min) for 2-3 minutes without load.

3.4 Check if the engine runs normally, if abnormal, please turn it off and repair.

⚠ Attention

The Inter-Cultivator must running-in before starting using. Check Chapter VI for running-in method.

◆ 4. Operation

4.1 Starting Inter-Cultivator: Clutch bar should be disengaged, and all gear shifting levers should be in neutral gear position, and then start the engine following the usual manual.

4.2 Running: Put gear shifting handle in the required gear position, clench the clutch handlebar to make the Inter-Cultivator work/walk.

4.3 Parking:

a) Loosen Clutch handlebar;

b) Put Gear shifting lever to Neutral position;

c) Following the user manual, if need to turn off the engine.

⚠ Attention

Park the Inter-Cultivator

⚠ Attention

- 5.1 When using inter-cultivator, you should pay attention to the working situation and sound of every part, check if the connection is good. There mustn't be loosed connection. If there is abnormal situation, please stop the inter-cultivator and check.
- 5.2 Never carry out work with heavy load if inter-cultivator has not been used for a long time, especially the new ones or the repaired ones.
- 5.3 Pay attention to the oil level of diesel engine, walking case and gear box. When they are insufficient, please refuel them.
- 5.4 Never cool the diesel engine in the way of water-pouring.
- 5.5 Prevent inter-cultivator from falling down when tilling.
- 5.6 Never install inter-cultivator with rotary blades when walking on sand or stone to avoid damaging blades.
- 5.7 After tilling, please clear away dirtiness on the inter-cultivator, such as mud,

Chapter VI. Maintenance

Due to rotary situation, abrasion and load change of inter-cultivator, bolts will become loose and parts will be worn during the work. These changes will destroy the proper working state of inter-cultivator, create abnormal fitting clearance, degrade output of diesel engine, increase oil consumption, lead to the maladjustment of spare parts, increase malfunction of inter-cultivator. All these will seriously affect the working efficiency of inter-cultivator. To decrease the frequency of the above-mentioned accidents, prevention of maintenance work must be done strictly and regularly to keep the inter-cultivator in a good technical state and prolong its life.

◆ 1. Running-in of inter-cultivator

- ◆ 1.1 As for running-in of diesel engine, please refer to its instruction.
- ◆ 1.2 If inter-cultivator is new or is just heavily repaired, it should work without load for one hour. After the inter-cultivator works with light load for five hours, all oil in gear box and crankcase of diesel engine should be drained immediately. Afterwards, you should refuel adequate clean diesel oil, pull the starting grip 5~10 times, then drain it. Refuel the lube oil for 4 hours running-in, then can use the Inter-Cultivator normally.

◆ 2. Technical maintenance table of inter-cultivator

- ◆ 2.1 Every-time maintenance (before and after work)

1. Listen and check if there is malfunction of every part (such as abnormal noise, overheat, loose screw and so on).
2. Check if there is oil leakage from diesel engine, gear box and running gear.
3. Check if the oil level of diesel engine and gear box is between the upper and lower limit of dipstick.
4. Clean the whole machine and spare parts which are with mud, grass and oil stain regularly.
5. Do daily record.

◆ 2.2 Primary maintenance (per 150 hours)

1. Carry out maintenance work based on all contents of every-time maintenance.
2. Wash gear box, running gearbox and change lube oil.
3. Check and adjust clutch, shift system and reverse gear system.

◆ 2.3 Secondary maintenance (per 800 hours)

1. Carry out maintenance work based on all contents of primary maintenance.
2. Check all gears and bearings. If they are fretted severely, please replace them.
3. Check other parts of inter-cultivator, such as: rotary blades or bolts and so on. If there is damage, please replace them.

◆ 2.4 Technical inspection (per 1500-2000 hours)

1. Take the whole machine to the specific maintenance station, and have a check. If the spare parts are severely fretted, they must be changed or repaired according to the situation.

◆ 3. Technical maintenance of inter-cultivator

Working intervals Maintenance contents	everyday	Work with half load for 8 hours	Work for 1 month or 20 hours	Work for 3 months or 150 hours	Every year or 1000 hours	Per 2 years or 2000 hours
Check & tighten nuts, bolts	√					
Check and refuel lube	√					
Check and change lube		√ (1 st time)	√ (2 nd time)	√ (3 rd time or more)		
Check if there is oil leakage	√					
Clean mud, grass and oil stain	√					
Debug malfunction	√					
Adjust operation parts	√					
Tighten the belt	√					

Gear and bearing					√	
------------------	--	--	--	--	---	--

◆ 4. Long-period storage of inter-cultivator

When inter-cultivator needs storing for a long period, the following measures should be taken to prevent tarnishing.

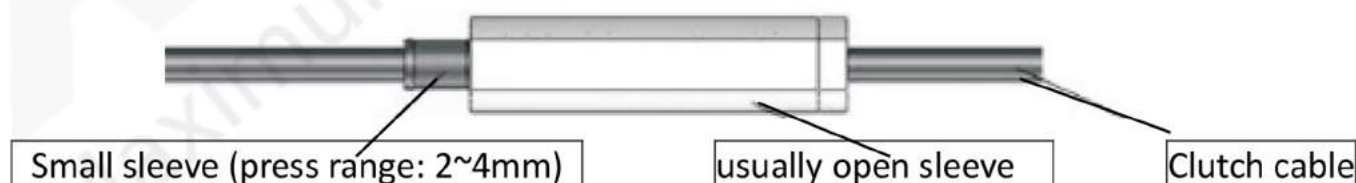
- 4.1 Wash oil stain and clean dust on the machine.
- 4.2 Drain lube oil in the gear box and refuel new oil.
- 4.3 Paint pickling oil on non-aluminum parts where there is no paint.
- 4.4 Store inter-cultivator in the dry, safe place where there is enough aeration.
- 4.5 Properly keep the attaching tools, certificates of conformity and instruction of inter-cultivator.

Chapter VII. Adjustment methods and data

◆ 1. Adjustment of clutch cable

The abrasion of friction plates and the clutch shifting fork will make malfunction of clutch after using for a long time, in this case, should adjust clutch accordingly.

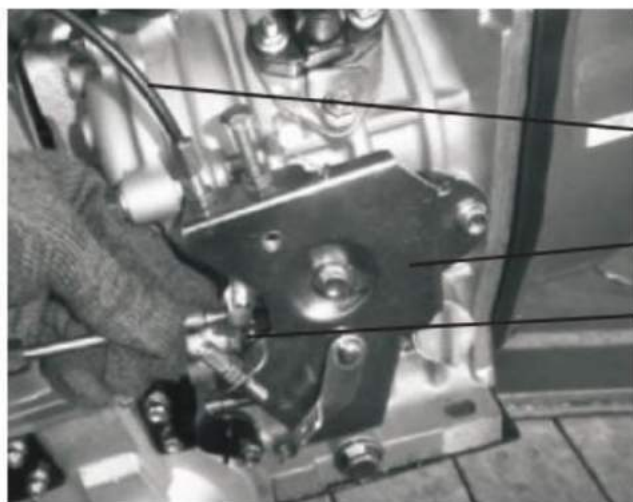
- 1.1 Clutch cable adjustment
 - 1.1.1 Every Inter-Cultivator must be equipped with one set of clutch limit usually open sleeve, which cannot be replaced by a common clutch cable;
 - 1.1.2 When adjusting the clutch, must make sure the small sleeve running in the scale range. When loosen clutch handlebar, the main output shaft should be stopped immediately. Please replace a new clutch cable if the small sleeve runs out of the scale range.
 - 1.1.3 When adjust clutch cable, please make the clutch cable adjusting rod on both clutch shifting fork arm and armrest-frame in the proper position, and then tighten the nut to lock them.



Requirement

The small sleeve must work in the scale range after all adjustment done.

◆ 2. Adjustment of throttle cable



Throttle cable

Throttle control panel

M4*10 screw

- ◆ 2.1 Adjust throttle cable, make throttle handle can reach the fastest and slowest position, then tighten the throttle switch with locking bolt.
- ◆ 3. Debugging method of steering cable
- ◆ 3.1 Adjust the tightness of the steering clutch cable so that the steering clutch handle is in a natural state of separation,
The clutch handle has an idle stroke of 2×3 mm; the steering clutch cable should not be adjusted too tight.

Chapter VIII. Troubleshooting

◆ 1. Common troubles and solutions

Phenomenon	Reason	Solution
Abnormal noise on gear	Over abrasion of the gear or improper installation	Reinstall or replace the gear
Gear cannot run smoothly	Improper installation	Reinstall the gear
Overheat of the machine	Less lube oil in the tank	Add lube oil as required
	Too narrow space between gears	Reassembly
	Two narrow space between bearings	Readjust
Oil leakage on the linkage of gear box	The connecting bolt is loosened	Tighten the bolt
Oil leakage	Sealing gasket is broken	Replace the sealing gasket
Oil leakage on the output shaft	Lip-shaped oil seal is broken	Replace the oil seal
Oil leakage on the oil-draining hole	O Ring is broken	Replace the O ring
	Screw plug is loosen	Tighten it accordingly
Oil leakage on the tank	Small holes on the tank	Welding or paint the holes

◆ 2. Other troubles and solutions

Phenomenon	Reason	Solution
Rotary blades are broken off	Hit stones or bricks when using	Replace it, pay attention to avoid the stones and bricks
Controlling cable is broken off	Long-time working abrasion	Replace the cable

Chapter IX. Wearing parts list

◆ Package contents

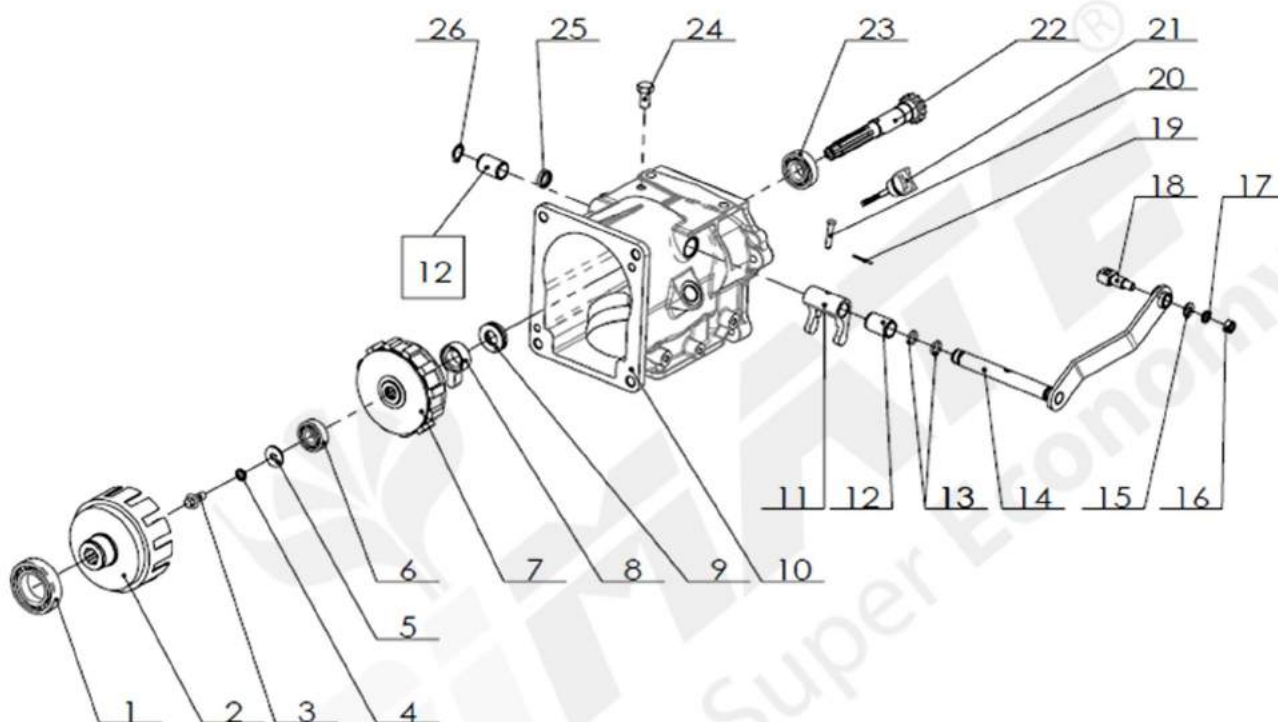
No.	Item	Assy
1	Clutch cable	Handle frame assy
2	Throttle switch cable	Handle frame assy
3	Throttle switch	Handle frame assy
4	Rubber handle bar	Handle frame assy
5	Rubber sleeve	Shift Knob, clamp handle
6	Slector rod oil seal	Walking gearbox,Tilling gearbox assembly
7	Oil plug	Gear-box
8	Rubber plate	fender and trailer body assembly
9	Steering cable	Handle assy
10	Wearing parts of engine	Refer to the user's manual of engine

Chapter X. Accessories

No.	Item Name	Qty.	Application	Remark
1	5 pcs one group ditching blades	1	Ditching	Standard
2	Rear-carriage wheel	1	Prop the machine and used for working	
3	Drag strut	1	Used for hard soil. Forbid use it when rear tilling	
4	Rear-wheel	1	Used for transporting and working	
5	3 pcs 3 group tilling blades	1	Used for rotary tilling	
6	4 pcs one group ditching blades	1	Ditching	Option
7	6 pcs one group ditching blades	1	Ditching	
8	Iron wheel	1	Used in soft soil and 4 pcs ditching blades	

PART DIAGRAM & PART LIST OF AM-2620-DGB-6D/9D INTER-CULTIVATOR

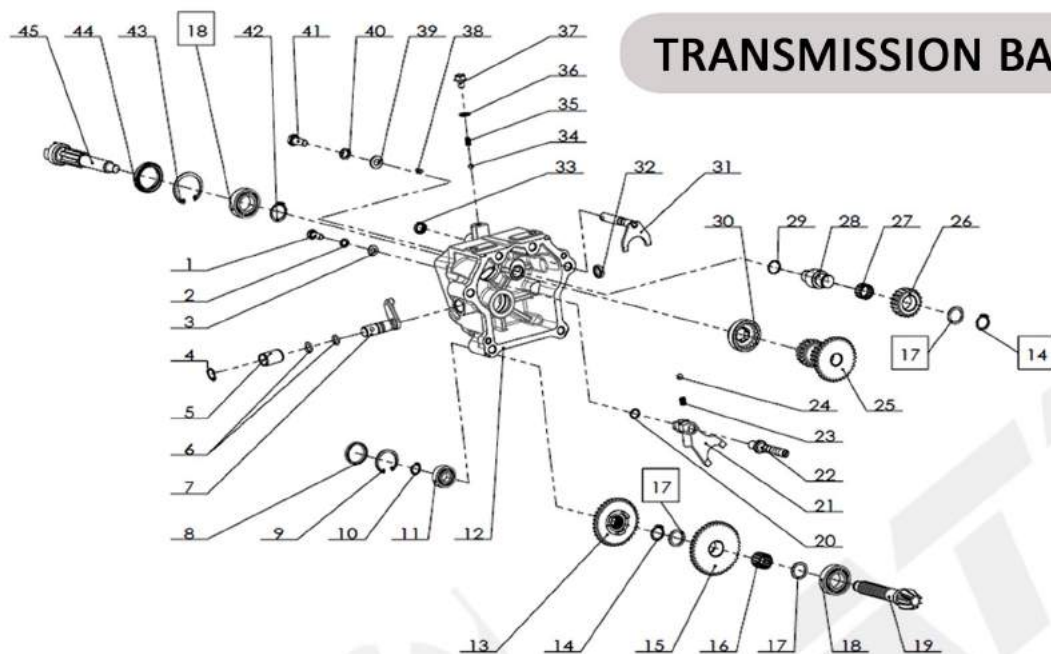
TRANSMISSION CASE COMP



SL. NO.	PART NUMBER	DESCRIPTION
1	AM-2620-DGB-A01	Deep groove ball bearings 6007
2	AM-2620-DGB-A02	Clutch cover assembly
3	AM-2620-DGB-A03	Hexagon flange bolt small series
4	AM-2620-DGB-A04	External serrated lock washer
5	AM-2620-DGB-A05	Large washers
6	AM-2620-DGB-A06	Bearing
7	AM-2620-DGB-A07	Clutch core assembly
8	AM-2620-DGB-A08	Cushion cover
9	AM-2620-DGB-A09	T26 friction disc
10	AM-2620-DGB-A10	Gear box
11	AM-2620-DGB-A11	Clutch fork
12	AM-2620-DGB-A12	Bushing
13	AM-2620-DGB-A13	O-ring

SL. NO.	PART NUMBER	DESCRIPTION
14	AM-2620-DGB-A14	Clutch fork shaft
15	AM-2620-DGB-A15	Flat washer
16	AM-2620-DGB-A16	Hex nut
17	AM-2620-DGB-A17	Spring washer
18	AM-2620-DGB-A18	Clutch cable movable seat
19	AM-2620-DGB-A19	Split pin
20	AM-2620-DGB-A20	Pin
21	AM-2620-DGB-A21	Dipstick assembly
22	AM-2620-DGB-A22	Spindle
23	AM-2620-DGB-A23	Deep groove ball bearings
24	AM-2620-DGB-A24	Hexagon head bolt
25	AM-2620-DGB-A25	Oil plug
26	AM-2620-DGB-A26	Circlip for shaft

PART DIAGRAM & PART LIST OF AM-2620-DGB-6D/9D INTER-CULTIVATOR



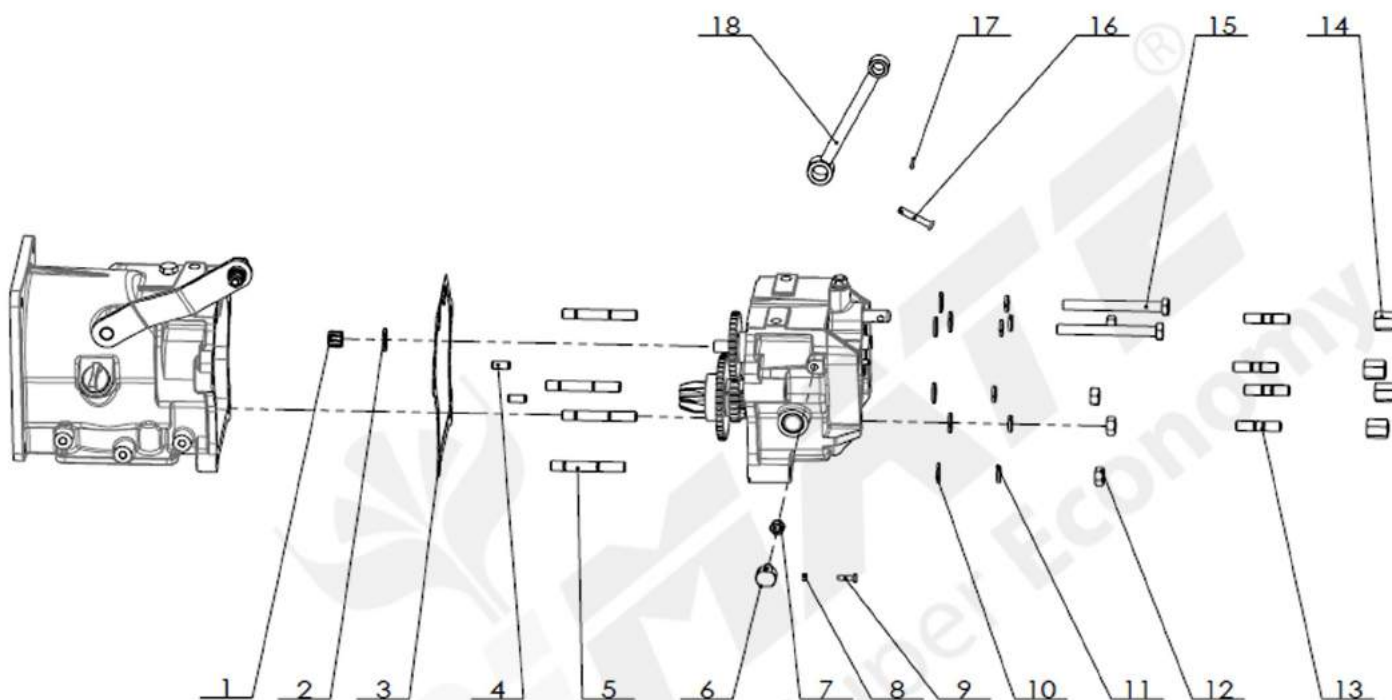
TRANSMISSION BACK CASE COMP

SL. NO.	PART NUMBER	DESCRIPTION
1	AM-2620-DGB-B01	Hexagon head bolt
2	AM-2620-DGB-B02	Spring washer
3	AM-2620-DGB-B03	Flat washer
4	AM-2620-DGB-B04	Circlip for shaft
5	AM-2620-DGB-B05	Bushing
6	AM-2620-DGB-B06	O-ring
7	AM-2620-DGB-B07	Shift rocker arm
8	AM-2620-DGB-B08	Oil plug
9	AM-2620-DGB-B09	Circlip for holes
10	AM-2620-DGB-B10	Circlip for shaft
11	AM-2620-DGB-B11	Deep groove ball bearings
12	AM-2620-DGB-B12	Gearbox back cover
13	AM-2620-DGB-B13	Shift gear A
14	AM-2620-DGB-B14	Circlip for shaft
15	AM-2620-DGB-B15	Transmission double gear
16	AM-2620-DGB-B16	Needle bearing
17	AM-2620-DGB-B17	Adjusting washer
18	AM-2620-DGB-B18	Deep groove ball bearings
19	AM-2620-DGB-B19	Countershaft
20	AM-2620-DGB-B20	O-ring
21	AM-2620-DGB-B21	Shift fork
22	AM-2620-DGB-B22	Shift fork shaft
23	AM-2620-DGB-B23	Shift spring

SL. NO.	PART NUMBER	DESCRIPTION
24	AM-2620-DGB-B24	Steel ball
25	AM-2620-DGB-B25	Triple gear
26	AM-2620-DGB-B26	Reverse gear
27	AM-2620-DGB-B27	Needle bearing
28	AM-2620-DGB-B28	Reverse shaft
29	AM-2620-DGB-B29	O-ring
30	AM-2620-DGB-B30	PTO dial
31	AM-2620-DGB-B31	PTO fork shaft assembly
32	AM-2620-DGB-B32	Oil plug
33	AM-2620-DGB-B33	Oil seal WD
34	AM-2620-DGB-B34	Steel ball
35	AM-2620-DGB-B35	Compression spring
36	AM-2620-DGB-B36	Seal
37	AM-2620-DGB-B37	Hexagon flange bolt small series
38	AM-2620-DGB-B38	Cylindrical pin unhardened steel and austenitic stainless steel
39	AM-2620-DGB-B39	Flat washer
40	AM-2620-DGB-B40	Spring washer
41	AM-2620-DGB-B41	Hexagon flange bolt
42	AM-2620-DGB-B42	Circlip for shaft
43	AM-2620-DGB-B43	Circlips for holes
44	AM-2620-DGB-B44	Oil seal
45	AM-2620-DGB-B45	PTO output shaft

PART DIAGRAM & PART LIST OF AM-2620-DGB-6D/9D INTER-CULTIVATOR

TRANSMISSION COMBINATION PARTS

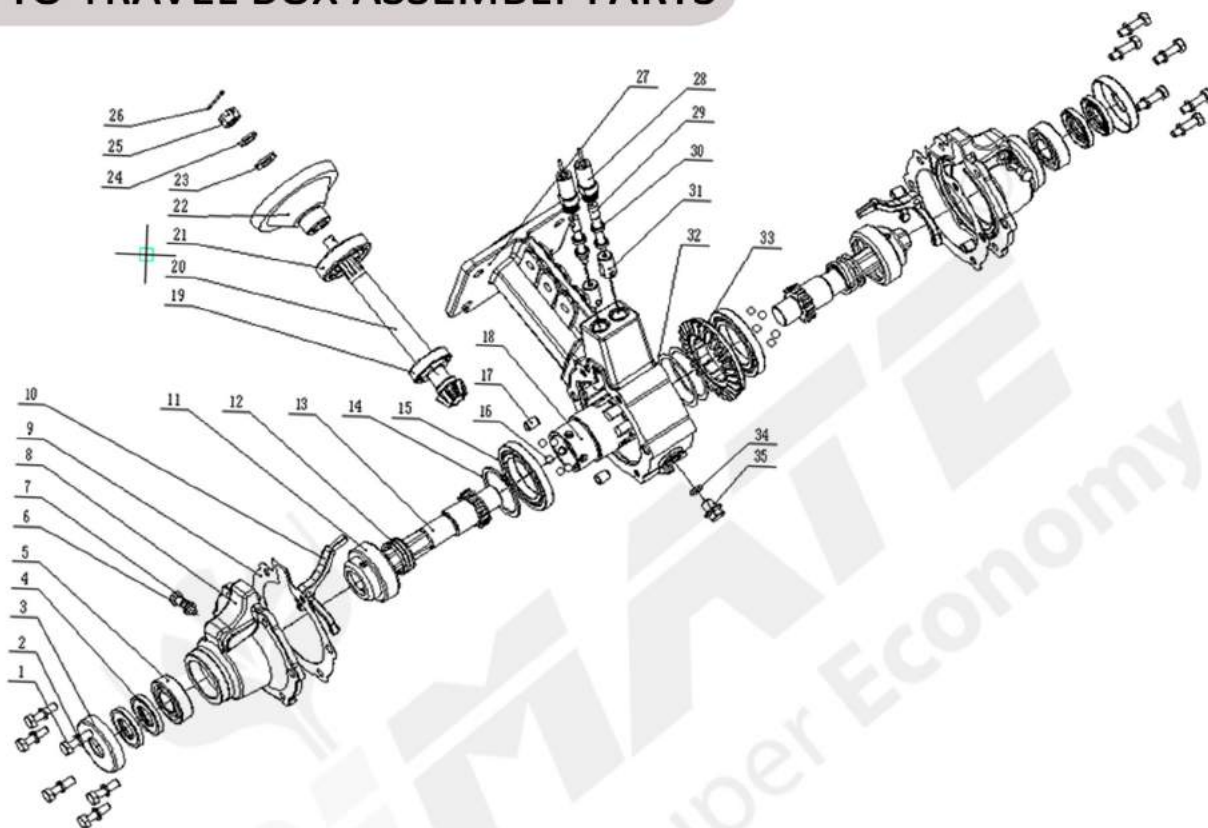


SL. NO.	PART NUMBER	DESCRIPTION
1	AM-2620-DGB-C01	Needle bearing
2	AM-2620-DGB-C02	Wear-resistant washer
3	AM-2620-DGB-C03	Rear box paper pad
4	AM-2620-DGB-C04	Locating pin
5	AM-2620-DGB-C05	Double-end stud
6	AM-2620-DGB-C06	Clutch seat
7	AM-2620-DGB-C07	Hexagon Thin Nut
8	AM-2620-DGB-C08	Type 1 hexagon nut
9	AM-2620-DGB-C09	Full thread hexagon head bolts

SL. NO.	PART NUMBER	DESCRIPTION
10	AM-2620-DGB-C10	Flat washer
11	AM-2620-DGB-C11	Spring washer
12	AM-2620-DGB-C12	Type 1 hexagon nut
13	AM-2620-DGB-C13	Equal-length double-ended stud C grade
14	AM-2620-DGB-C14	Cylinder head nut
15	AM-2620-DGB-C15	Hexagon head bolt
16	AM-2620-DGB-C16	Pin
17	AM-2620-DGB-C17	Circlip A
18	AM-2620-DGB-C18	Gear shift connecting arm

PART DIAGRAM & PART LIST OF AM-2620-DGB-6D/9D INTER-CULTIVATOR

TURN TO TRAVEL BOX ASSEMBLY PARTS

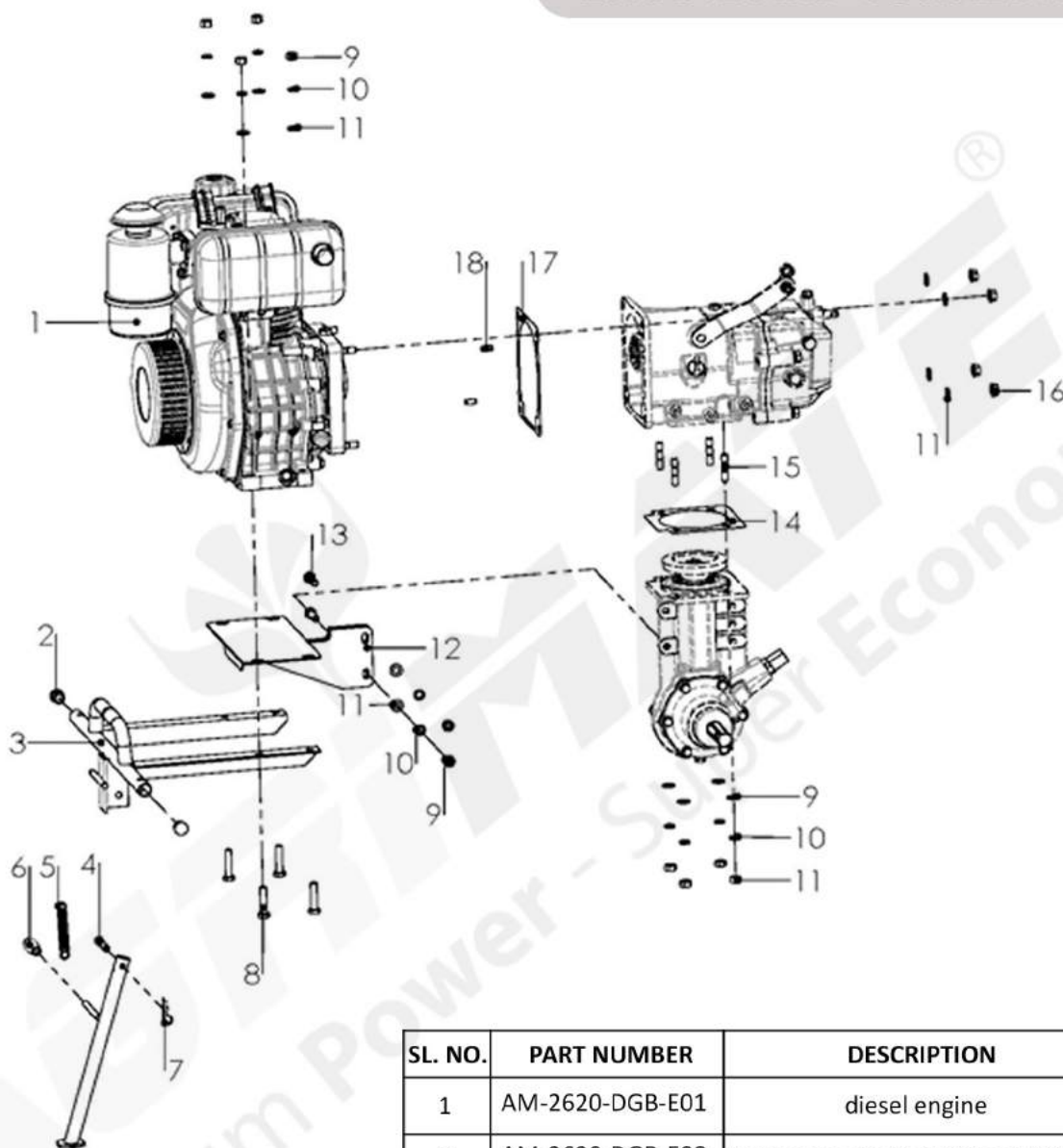


SL. NO.	PART NUMBER	DESCRIPTION
1	AM-2620-DGB-D01	Hexagon head bolts full thread
2	AM-2620-DGB-D02	Standard spring washer
3	AM-2620-DGB-D03	Dust cover
4	AM-2620-DGB-D04	Oil seal
5	AM-2620-DGB-D05	Deep groove ball bearing
6	AM-2620-DGB-D06	Lock bolt
7	AM-2620-DGB-D07	Non-standard flat washer
8	AM-2620-DGB-D08	Travel box end cover
9	AM-2620-DGB-D09	End cover paper pad
9	AM-2620-DGB-D10	End cover paper pad
10	AM-2620-DGB-D11	Steering separation fork
11	AM-2620-DGB-D12	Steering wheel
12	AM-2620-DGB-D13	Steering clutch return compression spring
13	AM-2620-DGB-D14	Half shaft
14	AM-2620-DGB-D15	Circlip for shaft
15	AM-2620-DGB-D16	Deep groove ball bearing
16	AM-2620-DGB-D17	Steel ball
17	AM-2620-DGB-D18	Positioning pin

SL. NO.	PART NUMBER	DESCRIPTION
18	AM-2620-DGB-D19	Spline bushing
19	AM-2620-DGB-D20	Tapered Roller Bearings
20	AM-2620-DGB-D21	Bevel gear shaft
21	AM-2620-DGB-D22	Tapered Roller Bearings
22	AM-2620-DGB-D23	Driven bevel gear
23	AM-2620-DGB-D24	Flat washer A grade
24	AM-2620-DGB-D25	Standard spring washer
25	AM-2620-DGB-D26	Hexagon Slotted Thin Nuts Class A and B
26	AM-2620-DGB-D27	Split pin
27	AM-2620-DGB-D28	Walking box
28	AM-2620-DGB-D29	Steering cable
29	AM-2620-DGB-D30	Connector
30	AM-2620-DGB-D31	Oil seal
31	AM-2620-DGB-D32	Cable seat
32	AM-2620-DGB-D33	Non-standard flat washer
33	AM-2620-DGB-D34	Walking bevel gear
34	AM-2620-DGB-D35	O-shaped rubber sealing ring
35	AM-2620-DGB-D36	Oil drain bolt

PART DIAGRAM & PART LIST OF AM-2620-DGB-6D/9D INTER-CULTIVATOR

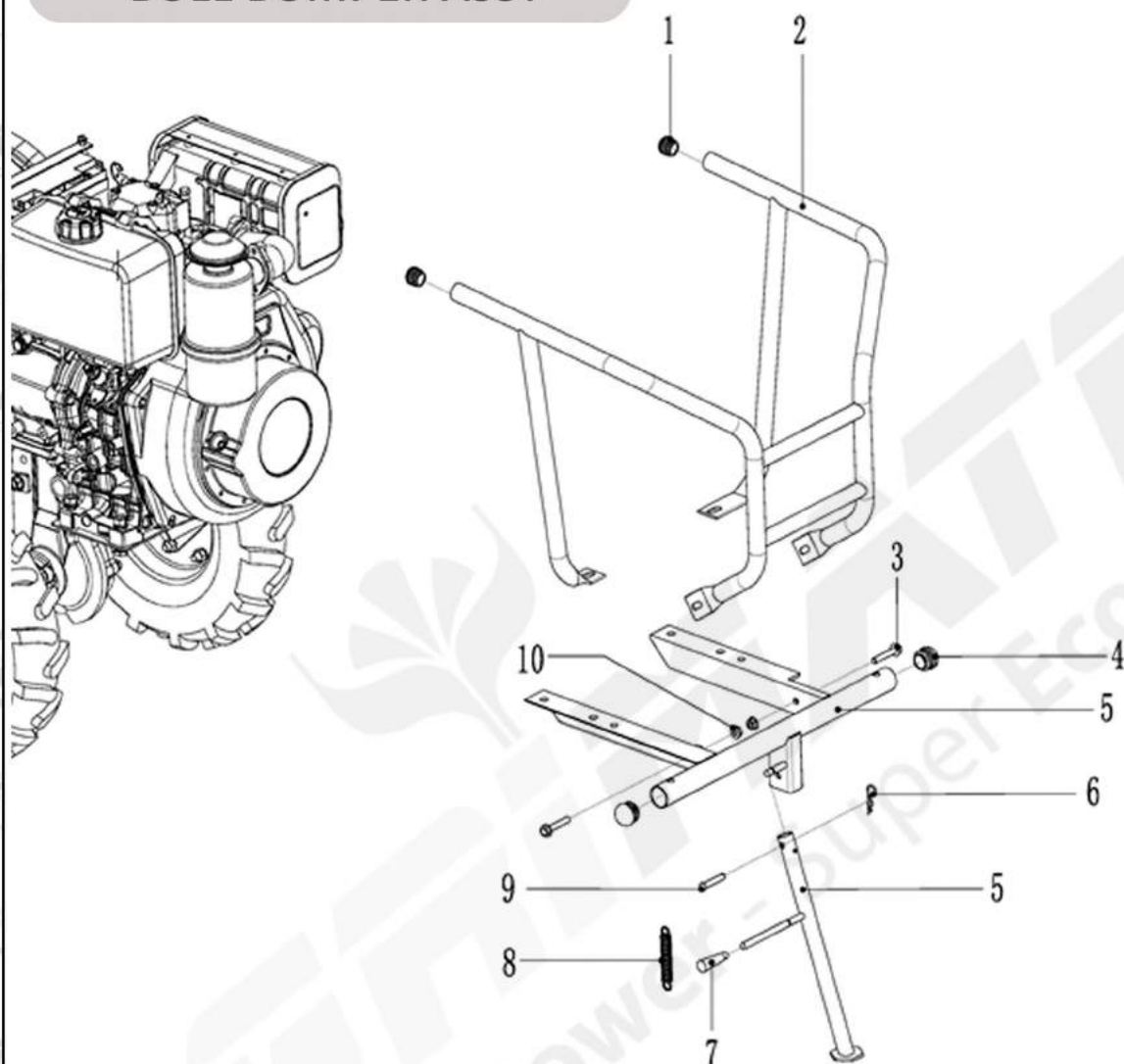
ENGINE AND CONNECTIONS



SL. NO.	PART NUMBER	DESCRIPTION
1	AM-2620-DGB-E01	diesel engine
2	AM-2620-DGB-E08	Hexagon head bolts full thread_M10*45
3	AM-2620-DGB-E09	Hex nut M10
4	AM-2620-DGB-E10	Spring washer 10
5	AM-2620-DGB-E11	Flat washer 10
6	AM-2620-DGB-E12	Engine bracket
7	AM-2620-DGB-E13	Hexagon head bolts full thread_M10*35
8	AM-2620-DGB-E14	Packing paper pad
9	AM-2620-DGB-E15	Equal-length double-ended stud C grade M10*40
10	AM-2620-DGB-E16	Type 2 hexagon flange nut M10
11	AM-2620-DGB-E17	Flange and gearbox paper gasket
12	AM-2620-DGB-E18	Locating pin 8*14

PART DIAGRAM & PART LIST OF AM-2620-DGB-6D/9D INTER-CULTIVATOR

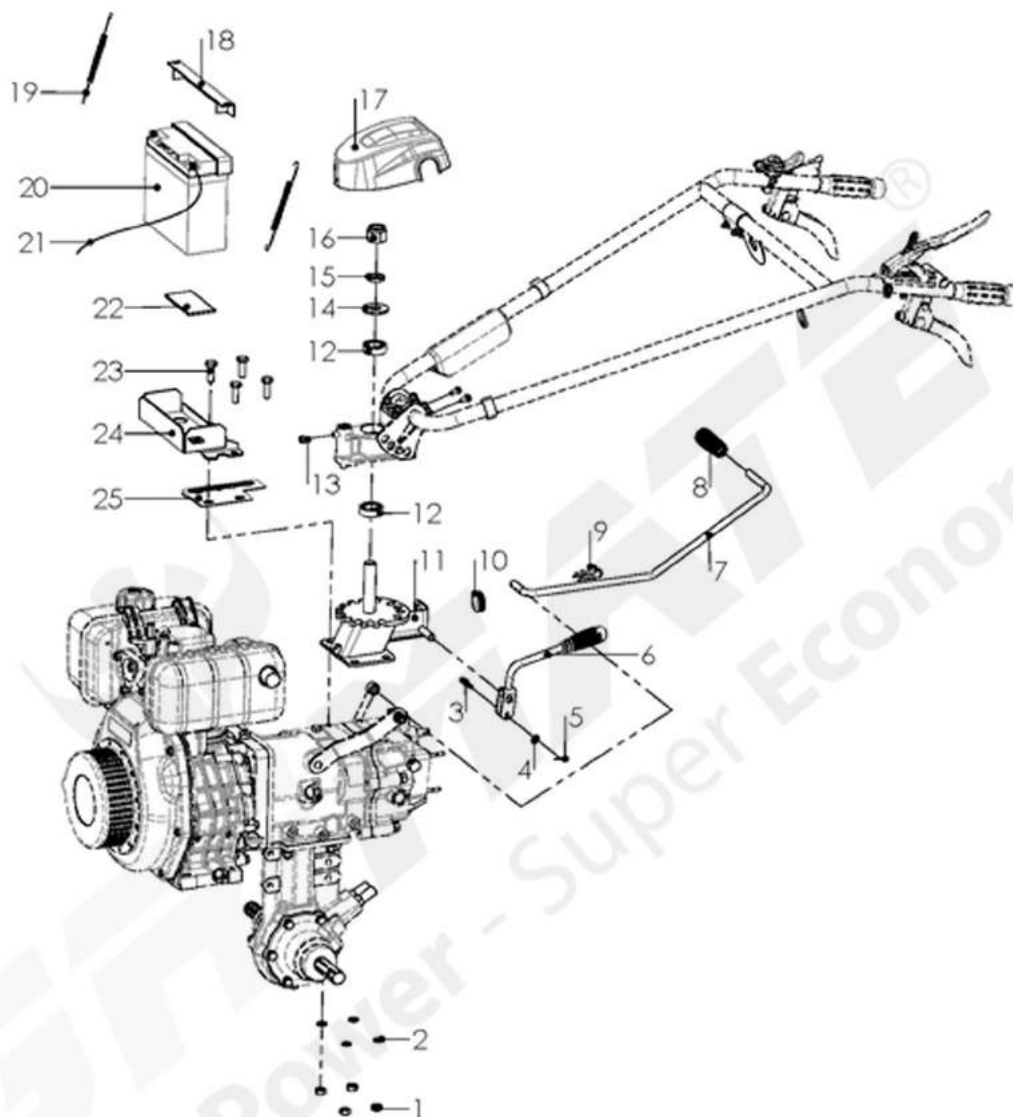
BULL BUMPER ASSY



SL. NO.	PART NUMBER	DESCRIPTION
1	AM-2620-DGB-F01	Bumper plug
2	AM-2620-DGB-F2.1	Upper bumper
	AM-2620-DGB-F2.2	Upper bumper
3	AM-2620-DGB-F03	Hexagon flange bolt
4	AM-2620-DGB-F04	Bumper plug
5	AM-2620-DGB-F5.1	Lower bumper
	AM-2620-DGB-F5.2	Lower bumper
6	AM-2620-DGB-F06	Circlip B
7	AM-2620-DGB-F07	Small crank rubber sleeve
8	AM-2620-DGB-F08	Support leg extension spring
9	AM-2620-DGB-F09	Pin shaft
10	AM-2620-DGB-F10	Hex flange nut M8

PART DIAGRAM & PART LIST OF AM-2620-DGB-6D/9D INTER-CULTIVATOR

HANDSTAND PARTS

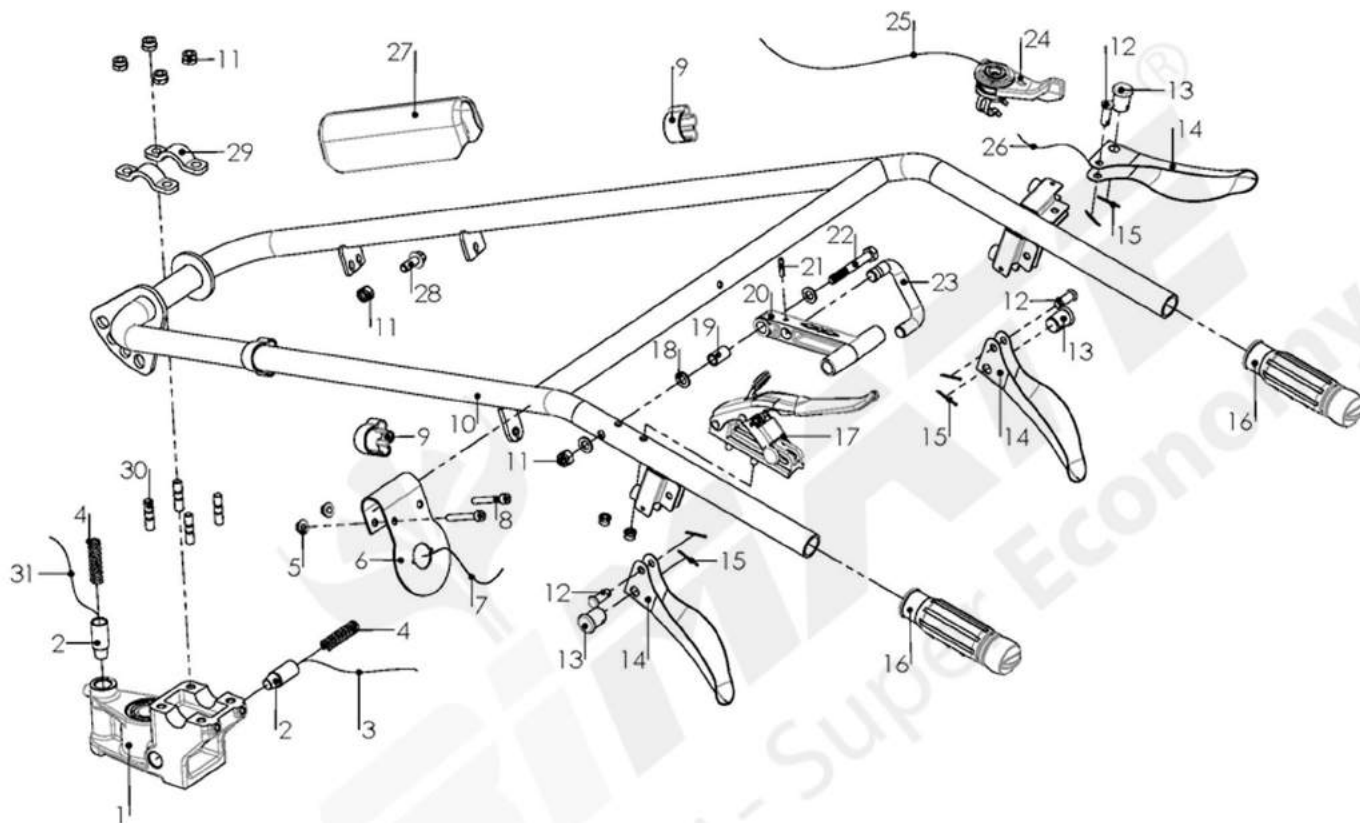


SL. NO.	PART NUMBER	DESCRIPTION
1	AM-2620-DGB-G01	Type 1 hexagon nut
2	AM-2620-DGB-G02	Standard spring washer
3	AM-2620-DGB-G03	Pin
4	AM-2620-DGB-G04	Flat washer
5	AM-2620-DGB-G05	Split pin
6	AM-2620-DGB-G06	PTO joystick B
7	AM-2620-DGB-G07	Shift lever
8	AM-2620-DGB-G08	φ12 shock-absorbing grip
9	AM-2620-DGB-G09	Circlip_B
10	AM-2620-DGB-G10	Handle seat wear-resistant cover
11	AM-2620-DGB-G11	Handle seat_A
12	AM-2620-DGB-G12	Deep groove ball bearing
13	AM-2620-DGB-G13	Hexagon flange bolts increased series B grade

SL. NO.	PART NUMBER	DESCRIPTION
14	AM-2620-DGB-G14	Gasket
15	AM-2620-DGB-G15	Standard spring washer
16	AM-2620-DGB-G16	Non-metallic insert hexagon lock nuts
17	AM-2620-DGB-G17	Handle seat cover
18	AM-2620-DGB-G18	Battery layering
19	AM-2620-DGB-G19	Speed control spring
20	AM-2620-DGB-G20	Battery
21	AM-2620-DGB-G21	Battery cable
22	AM-2620-DGB-G22	Anti-vibration rubber pad
23	AM-2620-DGB-G23	Hex Flange Bolt Small Series
24	AM-2620-DGB-G24	Battery box
25	AM-2620-DGB-G25	Gear indicator

PART DIAGRAM & PART LIST OF AM-2620-DGB-6D/9D INTER-CULTIVATOR

HANDLE PARTS WITH HAND

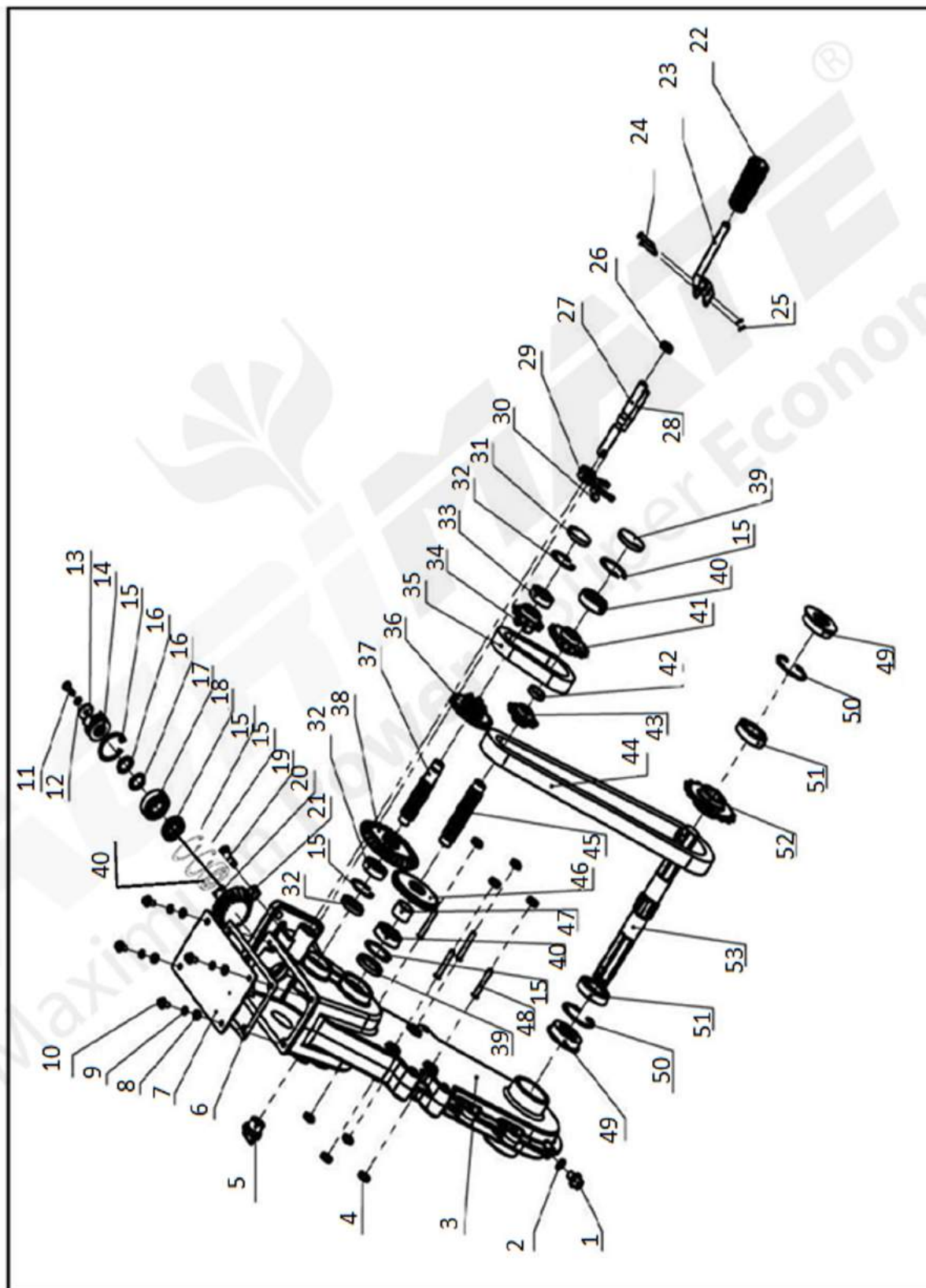


SL. NO.	PART NUMBER	DESCRIPTION
1	AM-2620-DGB-G01	Rotating seat
2	AM-2620-DGB-G02	Steering pin
3	AM-2620-DGB-G03	Handle height adjustment cable
4	AM-2620-DGB-G04	Regulating spring
5	AM-2620-DGB-G05	Type 2 Hexagon Flange Nut
6	AM-2620-DGB-G06	φ25 electric start positioning block
7	AM-2620-DGB-G07	Electric start control harness
8	AM-2620-DGB-G08	Hexagon socket head screw
9	AM-2620-DGB-G09	Self-locking hoop
10	AM-2620-DGB-G10	Handle bar
11	AM-2620-DGB-G12	Non-standard pin shaft
12	AM-2620-DGB-G13	Non-standard pin shaft
13	AM-2620-DGB-G14	Reverse gear/ clutch lever
14	AM-2620-DGB-G15	Split pin
15	AM-2620-DGB-G16	Damping grip
16	AM-2620-DGB-G17	Clutch lever assembly

SL. NO.	PART NUMBER	DESCRIPTION
17	AM-2620-DGB-G24	φ25 throttle switch
18	AM-2620-DGB-G25	Throttle cable
19	AM-2620-DGB-G26	Mainly Adjusting cable
20	AM-2620-DGB-G27	Handle bar side cover
21	AM-2620-DGB-G28	Hexagon flange bolt small series
22	AM-2620-DGB-G29	Handle bar pressing block
23	AM-2620-DGB-G30	Double stud bolt
24	AM-2620-DGB-G31	Handle adjusting cable for left and right

PART DIAGRAM OF AM-2620-DGB-6D/9D INTER-CULTIVATOR

DITCHING BOX PARTS



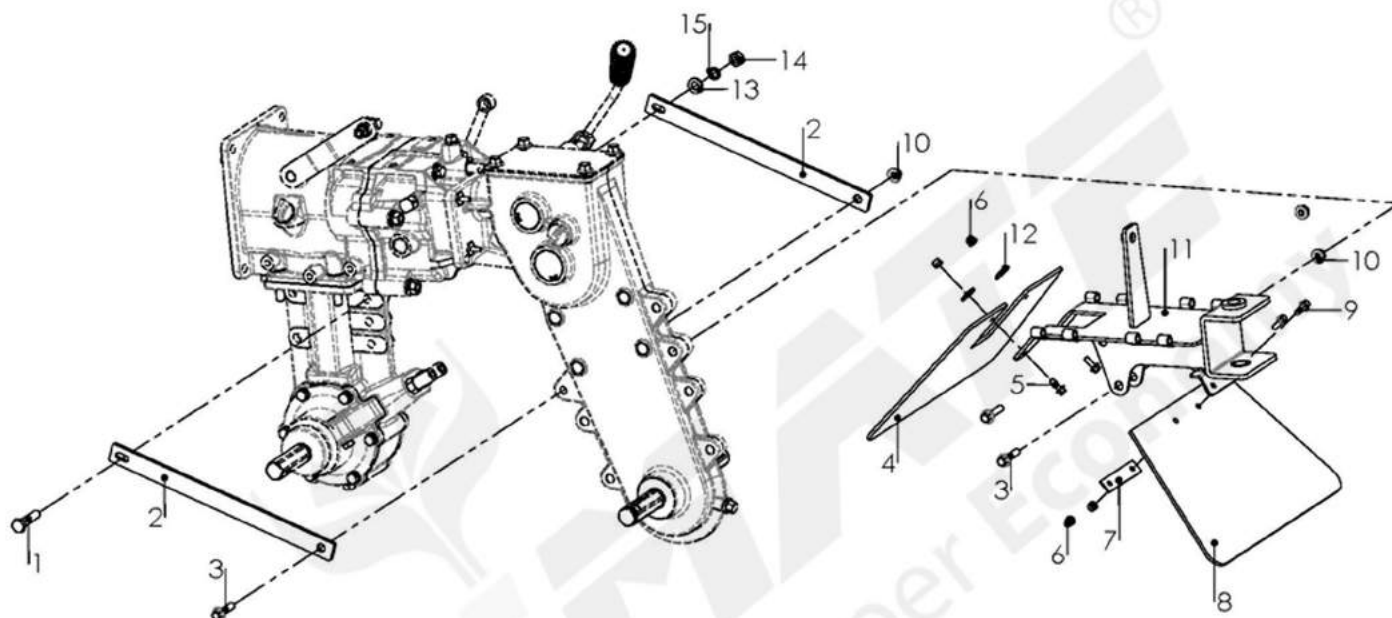
PART LIST OF AM-2620-DGB-6D/9D INTER-CULTIVATOR

SL. NO.	PART NUMBER	DESCRIPTION
1	AM-2620-DGB-H01	Hexagon flange bolts fine pitch small series
2	AM-2620-DGB-H02	Aluminum gasket
3	AM-2620-DGB-H03	Transmission case
4	AM-2620-DGB-H04	Oil plug B
5	AM-2620-DGB-H05	Oil filling plug
6	AM-2620-DGB-H06	Cover rubber pad
7	AM-2620-DGB-H07	Box cover
8	AM-2620-DGB-H08	Flat Washers
9	AM-2620-DGB-H09	Elastic washer
10	AM-2620-DGB-H10	Hexagon Flange Bolt Increased Series B Grade
11	AM-2620-DGB-H11	Hexagon head bolt
12	AM-2620-DGB-H12	External serrated lock washers
13	AM-2620-DGB-H13	Extra large washer C grade
14	AM-2620-DGB-H14	Output finger
15	AM-2620-DGB-H15	Retaining ring for hole
16	AM-2620-DGB-H16	Non-standard wear-resistant washer
17	AM-2620-DGB-H17	Deep groove ball bearings
18	AM-2620-DGB-H18	Oil seal
19	AM-2620-DGB-H19	Hexagon head bolt
20	AM-2620-DGB-H20	Driving bevel gear
21	AM-2620-DGB-H21	Hex nut
22	AM-2620-DGB-H22	φ12 shock-absorbing grip
23	AM-2620-DGB-H23	Shifting lever
24	AM-2620-DGB-H24	Pin shaft
25	AM-2620-DGB-H25	Split pin
26	AM-2620-DGB-H26	Oil seal
27	AM-2620-DGB-H27	Fork shaft

SL. NO.	PART NUMBER	DESCRIPTION
28	AM-2620-DGB-H28	Shifting support arm
29	AM-2620-DGB-H29	Shifting fork
30	AM-2620-DGB-H30	Hexagon head bolt
31	AM-2620-DGB-H31	Oil plug
32	AM-2620-DGB-H32	Circlip for hole
33	AM-2620-DGB-H33	Deep groove ball shaft
34	AM-2620-DGB-H34	Driving sprocket
35	AM-2620-DGB-H35	Chain
36	AM-2620-DGB-H36	Driving gear
37	AM-2620-DGB-H37	Driving shaft I
38	AM-2620-DGB-H38	Driven bevel gear
39	AM-2620-DGB-H39	Oil plug
40	AM-2620-DGB-H40	Deep groove ball bearings
41	AM-2620-DGB-H41	Cultivation box driven sprocket
42	AM-2620-DGB-H42	Bushing
43	AM-2620-DGB-H43	Driving sprocket
44	AM-2620-DGB-H44	Chain
45	AM-2620-DGB-H45	Driving shaft II
46	AM-2620-DGB-H46	Driven gear
47	AM-2620-DGB-H47	Bushing
48	AM-2620-DGB-H48	Pin
49	AM-2620-DGB-H49	Iron shell oil seal
50	AM-2620-DGB-H50	Circlips for holes
51	AM-2620-DGB-H51	Deep groove ball bearings
52	AM-2620-DGB-H52	Driven sprocket
53	AM-2620-DGB-H53	Hexagonal output shaft

PART DIAGRAM & PART LIST OF AM-2620-DGB-6D/9D INTER-CULTIVATOR

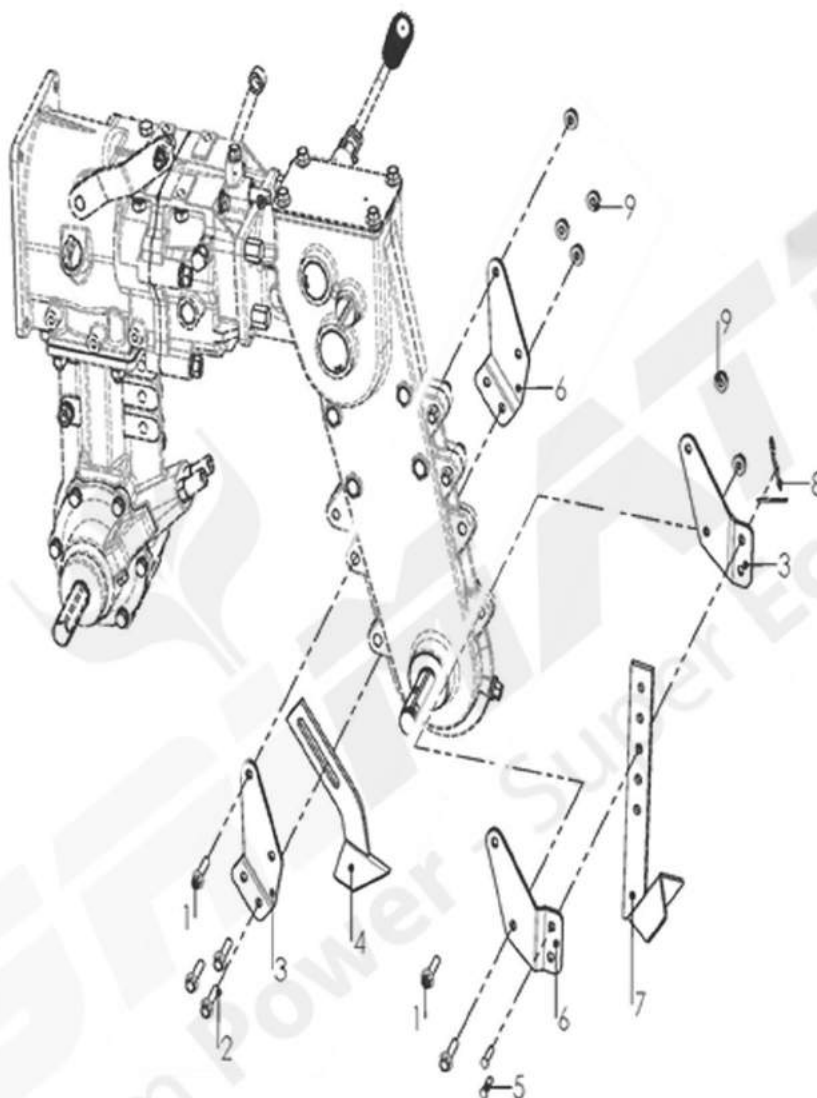
SUPPORT FRAME PARTS



SL. NO.	PART NUMBER	DESCRIPTION
1	AM-2620-DGB-K01	Hexagon head bolts full thread
2	AM-2620-DGB-K02	Gearbox connecting plate
3	AM-2620-DGB-K03	Hexagon flange bolt small series
4	AM-2620-DGB-K04	Front mudguard rubber
5	AM-2620-DGB-K05	Hexagon Flange Bolt Increased Series
6	AM-2620-DGB-K06	Hexagon lock nuts with non-metallic insert
7	AM-2620-DGB-K07	Rubber block layering
8	AM-2620-DGB-K08	Mudguard rubber plate/inner
9	AM-2620-DGB-K09	Hexagon Flange Bolt Increased Series B Grade
10	AM-2620-DGB-K10	Type 2 hexagon flange nut
11	AM-2620-DGB-K11	Supporting frame
12	AM-2620-DGB-K12	Extra large washers
13	AM-2620-DGB-K13	Flat washer
14	AM-2620-DGB-K14	Hex nut
15	AM-2620-DGB-K15	Spring washer

PART DIAGRAM & PART LIST OF AM-2620-DGB-6D/9D INTER-CULTIVATOR

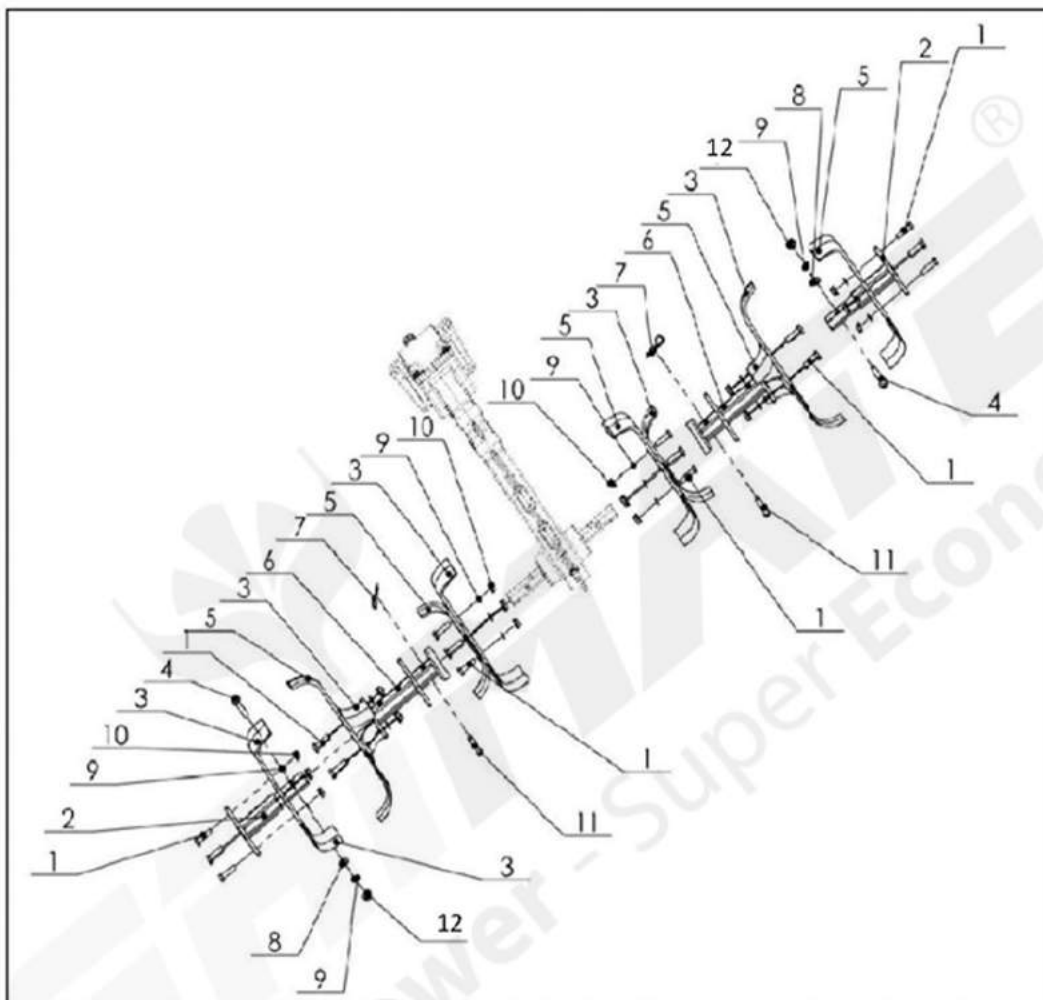
BREAKING SHOVEL PART



SL. NO.	PART NUMBER	DESCRIPTION
1	AM-2620-DGB-M01	Hexagon flange bolt
2	AM-2620-DGB-M02	Hexagon flange bolt
3	AM-2620-DGB-M03	Trencher shovel connecting plate/right
4	AM-2620-DGB-M04	Groundbreaker
5	AM-2620-DGB-M05	Pin
6	AM-2620-DGB-M06	Trencher shovel connecting plate/left
7	AM-2620-DGB-M07	Groundbreaker
8	AM-2620-DGB-M08	Circlip B
9	AM-2620-DGB-M09	Type 2 hexagon flange nut

PART DIAGRAM & PART LIST OF AM-2620-DGB-6D/9D INTER-CULTIVATOR

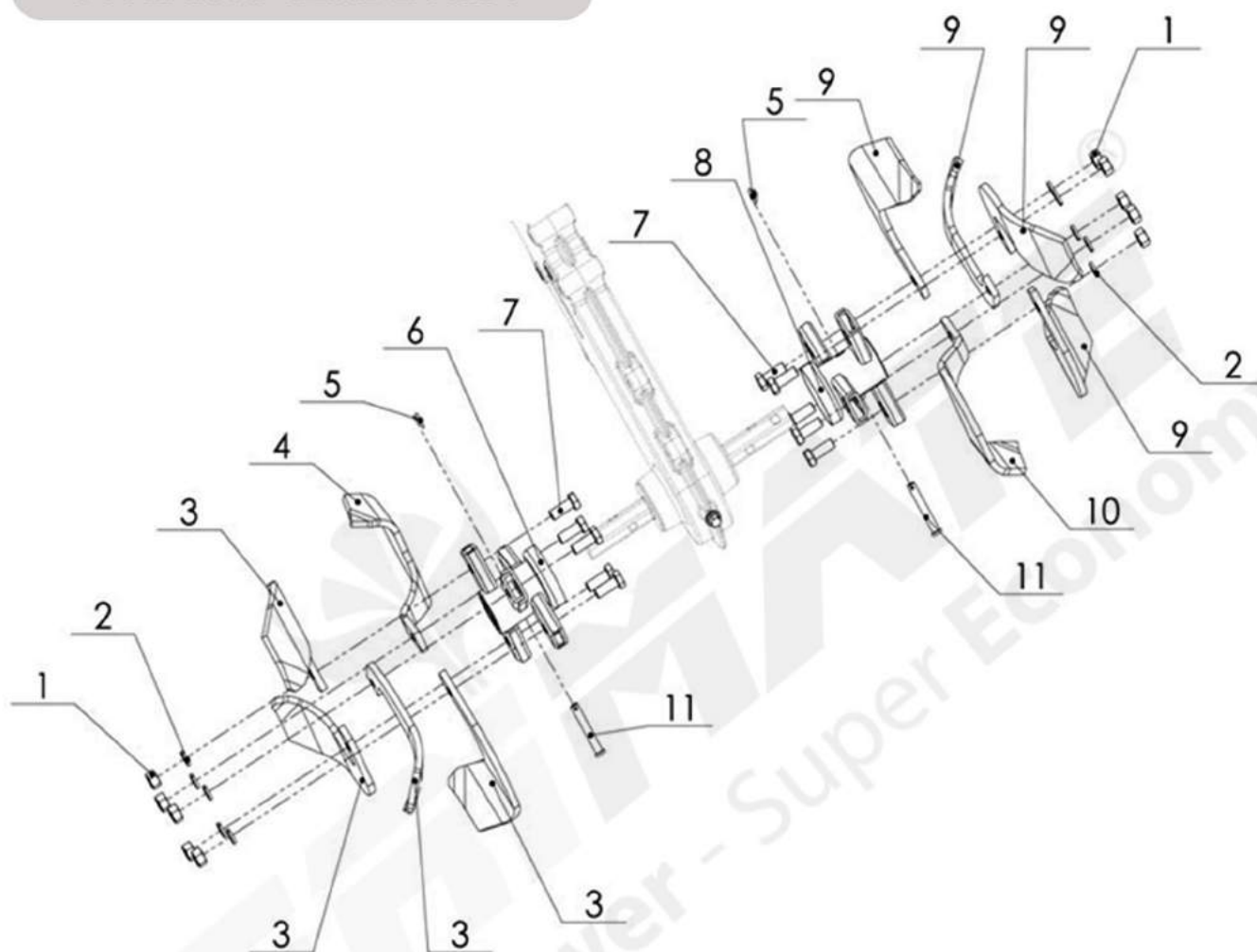
CULTIVATING BLADES



SL. NO.	PART NUMBER	DESCRIPTION
1	AM-2620-DGB-N01	Hexagon head bolts full thread
2	AM-2620-DGB-N02	Vice blade holder
3	AM-2620-DGB-N03	Rotary tilling blade (right)
4	AM-2620-DGB-N04	Hexagon flange bolt
5	AM-2620-DGB-N05	Rotary tilling blade (left)
6	AM-2620-DGB-N06	Main blade holder
7	AM-2620-DGB-N07	Circlip B
8	AM-2620-DGB-N08	Flat washer A grade
9	AM-2620-DGB-N09	Spring washer
10	AM-2620-DGB-N10	Hexagon lock nuts with non-metallic insert
11	AM-2620-DGB-N11	Pin
12	AM-2620-DGB-N12	Hex flange nut

PART DIAGRAM & PART LIST OF AM-2620-DGB-6D/9D INTER-CULTIVATOR

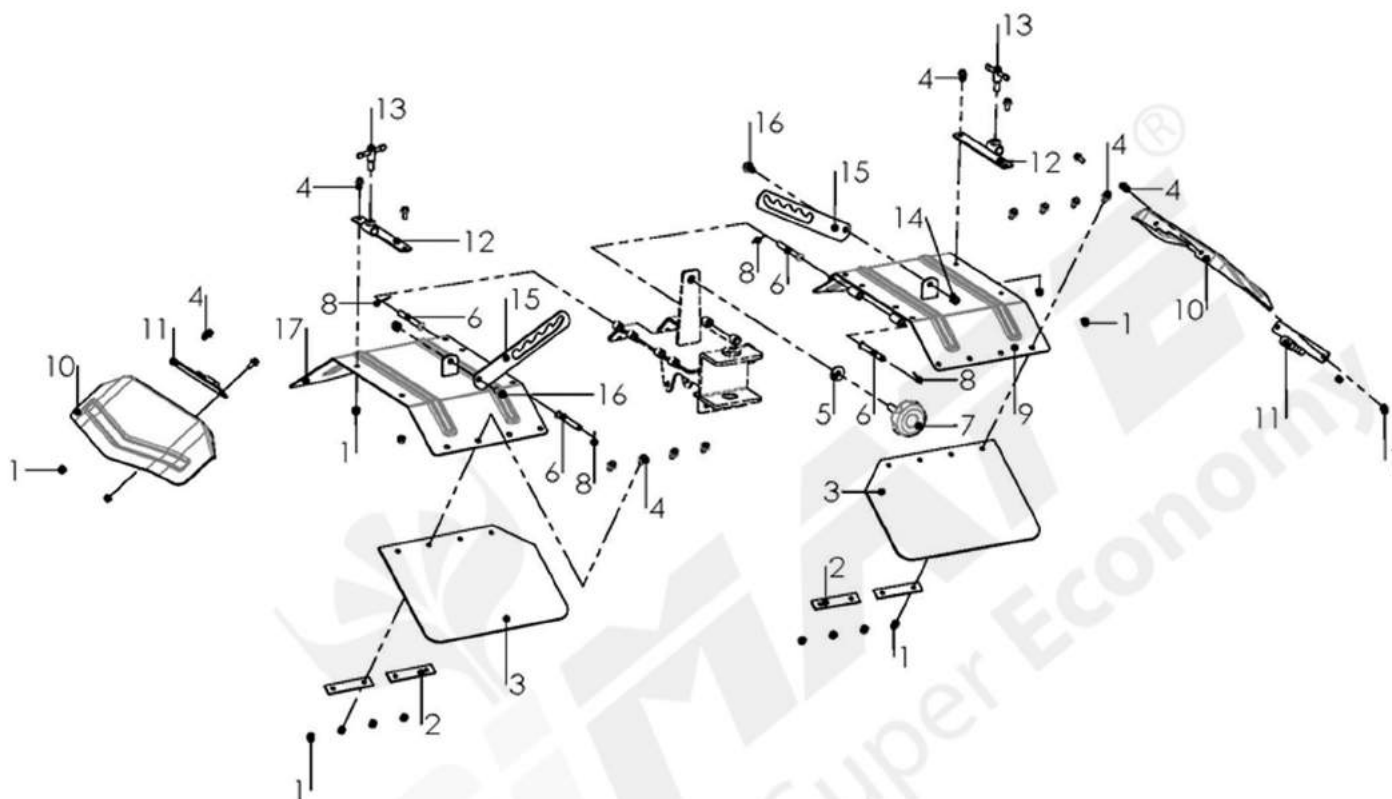
DITCHING BLADE ASSY



SL. NO.	PART NUMBER	DESCRIPTION
1	AM-2620-DGB-N01	Hex nut
2	AM-2620-DGB-N02	Spring washer
3	AM-2620-DGB-N03	Parallel ditching blade(left)
4	AM-2620-DGB-N04	Bowl-shaped ditching blade(left)
5	AM-2620-DGB-N05	Circlip B
6	AM-2620-DGB-N06	Five-piece ditching blade holder(left)
7	AM-2620-DGB-N07	Hexagon bolt
8	AM-2620-DGB-N08	Five-piece ditching blade holder(right)
9	AM-2620-DGB-N09	Parallel ditching blade(right)
10	AM-2620-DGB-N10	Bowl-shaped ditching blade(right)
11	AM-2620-DGB-N11	Pin

PART DIAGRAM & PART LIST OF AM-2620-DGB-6D/9D INTER-CULTIVATOR

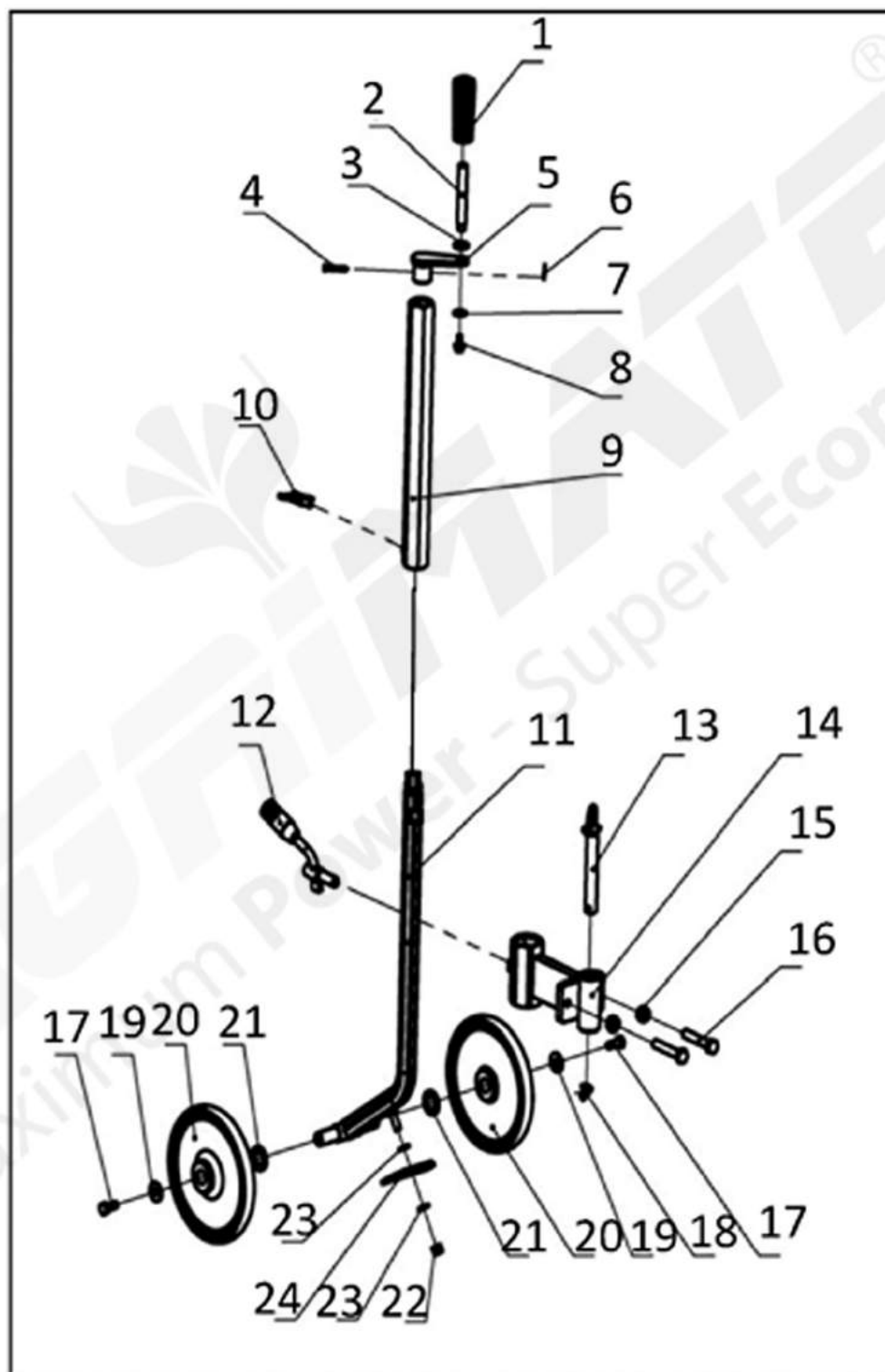
MUDGUARD PARTS



SL. NO.	PART NUMBER	DESCRIPTION
1	AM-2620-DGB-P01	Hexagon lock nuts with non-metallic
2	AM-2620-DGB-P02	Rubber block layering
3	AM-2620-DGB-P03	Mudguard rubber plate/outer
4	AM-2620-DGB-P04	Hexagon Flange Bolt Increased Series B Grade
5	AM-2620-DGB-P05	Large flat washer
6	AM-2620-DGB-P06	Pin
7	AM-2620-DGB-P07	Adjusting block locking handle
8	AM-2620-DGB-P08	Split pin
9	AM-2620-DGB-P09	Right fender
10	AM-2620-DGB-P10	Side fender
11	AM-2620-DGB-P11	Hinge A
12	AM-2620-DGB-P12	Hinge B
13	AM-2620-DGB-P13	Small locking handle
14	AM-2620-DGB-P14	Hexagon lock nuts with non-metallic
15	AM-2620-DGB-P15	Mudguard angle adjusting block
16	AM-2620-DGB-P16	Hexagon flange bolt small series
17	AM-2620-DGB-P17	Left fender

PART DIAGRAM OF AM-2620-DGB-6D/9D INTER-CULTIVATOR

REAR WHEEL PARTS



PART LIST OF AM-2620-DGB-6D/9D INTER-CULTIVATOR

SL. NO.	PART NUMBER	DESCRIPTION
1	AM-2620-DGB-R01	Shock absorption grip
2	AM-2620-DGB-R02	Adjusting handle connecting rod
3	AM-2620-DGB-R03	Flat washer
4	AM-2620-DGB-R04	Pin shaft
5	AM-2620-DGB-R05	Adjusting handle connecting block
6	AM-2620-DGB-R06	Circlip A
7	AM-2620-DGB-R07	Large flat washer
8	AM-2620-DGB-R08	Hexagon flange bolt
9	AM-2620-DGB-R09	Rear wheel extension connecting rod
10	AM-2620-DGB-R10	Small locking handle
11	AM-2620-DGB-R11	Depth-limited wheel bracket combination
12	AM-2620-DGB-R12	Locking handle of resistance cultivating blade
13	AM-2620-DGB-R13	Pin with ring
14	AM-2620-DGB-R14	E type connecting frame
15	AM-2620-DGB-R15	Hex nut
16	AM-2620-DGB-R16	Hexagon head bolt
17	AM-2620-DGB-R17	Hexagon head bolt
18	AM-2620-DGB-R18	Circlip B
19	AM-2620-DGB-R19	Large washers
20	AM-2620-DGB-R20	Rear wheel
21	AM-2620-DGB-R21	Flat washer
22	AM-2620-DGB-R22	Hexagon lock nuts with non-metallic insert
23	AM-2620-DGB-R23	Flat washer
24	AM-2620-DGB-R24	Mudguard

Warranty Card

CUSTOMER COPY



Purchaser's Name & Address

Product Name

AM-2620-DGB-6D/9D INTER-CULTIVATOR

Product Serial No.

Invoice / DN No.

Date of Delivery

Dealer's Office Seal

Dealer Sign

Customer Sign.

I/We accept the terms and conditions of Warranty as in the Warranty Card.

Warranty Card

DEALER'S COPY



Purchaser's Name & Address

Product Name

AM-2620-DGB-6D/9D INTER-CULTIVATOR

Product Serial No.

Invoice / DN No.

Date of Delivery

Dealer's Office Seal

Dealer Sign

Customer Sign.

I/We accept the terms and conditions of Warranty as in the Warranty Card.

Warranty Card

COMPANY COPY



Purchaser's Name & Address

Product Name

AM-2620-DGB-6D/9D INTER-CULTIVATOR

Product Serial No.

Invoice / DN No.

Date of Delivery

Dealer's Office Seal

Dealer Sign

Customer Sign.

I/We accept the terms and conditions of Warranty as in the Warranty Card.



1st Free Service Coupon

ISO 9001-2015
CERTIFIED COMPANY

FREE SERVICE COUPON (30 Days / 30 hrs (Which ever is earlier))

Model
AM-2620-DGB-6D/9D INTER-CULTIVATOR

Serial Number

PDI Date

Service No.

Purchase bill no.

Date

Dealer's Office Seal & Signature

Customer Signature.....

Conditions: Operations listed have been performed to my entire satisfaction without any labour charges. Only consumables were charged.



agriculture | horticulture | sericulture | plantations | forestry | garden | health care

WARRANTY AND FREE SERVICE COUPON



2nd Free Service Coupon

ISO 9001-2015
CERTIFIED COMPANY

FREE SERVICE COUPON (60 Days / 60 hrs (Which ever is earlier))

Model
AM-2620-DGB-6D/9D INTER-CULTIVATOR

Serial Number

PDI Date

Service No.

Purchase bill no.

Date

Dealer's Office Seal & Signature

Customer Signature.....

Conditions: Operations listed have been performed to my entire satisfaction without any labour charges. Only consumables were charged.



agriculture | horticulture | sericulture | plantations | forestry | garden | health care

WARRANTY AND FREE SERVICE COUPON



3rd Free Service Coupon

ISO 9001-2015
CERTIFIED COMPANY

FREE SERVICE COUPON (90 Days /120hrs (Which ever is earlier))

Model
AM-2620-DGB-6D/9D INTER-CULTIVATOR

Serial Number

PDI Date

Service No.

Purchase bill no.

Date

Dealer's Office Seal & Signature

Customer Signature.....

Conditions: Operations listed have been performed to my entire satisfaction without any labour charges. Only consumables were charged.



agriculture | horticulture | sericulture | plantations | forestry | garden | health care

WARRANTY AND FREE SERVICE COUPON

Do's & Don'ts

- Always read the instruction manual supplied along with the equipments and understand the correct installation and operating procedures before attempting to use the equipments.
- It is important to use the personal protection equipments such as head helmet with visor, ear defenders, goggles, safety gloves, cut resistant shoes, trousers and jackets while operating potentially dangerous machines.
- Avoid untrained persons using the equipments. Children must not be allowed to handle these equipments.
- Always use genuine spares and accessories in repairs and usage to derive maximum life of the equipments.
- Always keep the equipments in good working condition to minimize loss of output as well as to reduce the pollution and save the environment.
- Do not use the machine within range of persons unless they wear protective clothing.
- Do not operate the machine when fatigued or under the influence of alcohol or drugs.
- For more query kindly contact for our Service Center/Dealer/ franchise



Small and Timely Maintenance - Big Savings

MULTIPLY PROFITS

WITH OUR MULTI CROP, MULTI PURPOSE EQUIPMENTS



RANGE OF PRODUCTS



BATTERY /
MANUAL
SPRAYER



PORTABLE
POWER
SPRAYER



KNAPSACK
POWER
SPRAYER



ROTARY
TILLER



CHAFF
CUTTER



TEA
PRUNER



FOGGER



POWER
WEEDER



CHAINSAW



ROTARY
TILLER



LAWN
MOWER



HIGH
PRESSURE
WASHER



EARTH
AUGER



RIDE ON
MOWER



RANGE OF PRODUCTS



Advanced Technology

RANGE OF PRODUCTS



BRUSH CUTTER
- PUSH TYPE



BRUSH CUTTER -
BACK PACK



BRUSH CUTTER -
MULTI TOOL



POLE PRUNER



BLOWER
BACK PACK



LAWN MOWER



BRUSH
CUTTER



BACK PACK
BC



TILLER



FOGGER



EARTH
AUGER



RANGE OF PRODUCTS

OUR RETAIL FORMATS



IMPORTERS & MARKETING BY:

Ratnagiri Impex Pvt. Ltd.

Annapurna House, # 1/1G,

7th Cross New Guddadahalli,

Mysore Road Bangalore - 560 026, India

Ph: 080-26985100/1/2

Email: info@ratnagiriimpex.com



TOLL FREE :
1800-425-3036

www.ratnagiriimpex.com

www.agrimart.in



**ratnagiri
impex**
BRINGING YOU THE FUTURE... NOW

An ISO 9001:2015 Certified Company

agriculture | horticulture | sericulture | plantations | forestry | garden | health care