

TRACK TROLLY / TRANSPORTER AM-MT-320M TRANSMISSION PART LIST



TECHNICAL SPECIFICATIONS

WHEEL TROLLY/TRANSPORTER	
MODEL	AM-MT-320M
ENGINE	AM-170FP
POWER	7HP/212CC
NO. OF GEARS	3FORWARD, 1 REVERSE
LOADING CAPACITY	UPTO 350KG

Operation Instructions

Warnings

Forbid to operate, maintain and check the machine before read and mater the instructions Please safe-keep the instructions in order to operate, maintain and check the machine in time.

About the instructions

In order that you can operate our machine more safe, the instructions contains method for operating ,maintain and checking.Correctly operating method is on basis of reading and grasping.

Warnings

Forbid to operate, maintain and check the machine before read and mater the instructions.Please safe-keep the instructions in order to operate, maintain and check the machine in time.

About the machine

Warnings

This machine exists potential dangers, you should operate maintain and check based on the instructions.This machine is for fields convey, not for other ways. Forbid to operate on such roads, national highways. If any accidents in such road ,our factory will not burden any responsibility. Fobid to change the machine, in order to avoid any accidents, forbid to take off the proof cover.

About the warnings items in this instructions

The instructions define warnings to below parts based on danger level(or accidents level) Please get understood for below warning items, and then operate the machine.

item	meaning
dangers	Very dangerous warning, without notice, may cause fatal accidents
warnings	potential dangerous warning, without notice, may cause fatal accidents
cautions	potential dangerous warning, without notice, may cause accidents or injury. Even will harm the machine.
suggestions	Attract one attention, or feedback your advice



1. Safety affairs

Safety driving, safety operating

General safety precautions must comply with this record of driving, operation. Driving operation must be in accordance with the provisions of the articles of association of security matters, always remember to safe driving, safety operation.

1.1 Before driving instructions



The right to wear safety clothing, and wear the safety guard Do not wear the leisure clothes like vests, shorts and sandals when operating.

Check before operation



Check carefully before start,any fault,need remove timely. Fire forbidden Fire away from fuel. Futuremore,add the fuel after engine off.

Fire Forbidden



Fire away from fuel.

Futuremore,add the fuel after engine off.

Loading cautions

forbid over loading

Forbid to load over the max capacity for this machine

correct to load the goods

In order to avoid placing uneven, let the machine roll over, please place them even and fasten with rope, moreover, should avoid the height to ensure the sight view

cautions for quantity restrictions

When crossing the wood bridge, please make sure the total quantity of machine, goods and operator lower than max bearing quantity. And cross within limited speed.

cautions for loading capacity at the bevelled level

At the degree 15-20 bevelled level, loading capacity should control within 150KG. when at 20-25, should bear nothing to drive. Forbid to drive while the level over 25 degrees. Forbid to shift while overloading or at bevelled level

forbid to operate the bucket while at bevelled level

Forbid to operate the bucket while at bevelled level, which will let the machine roll over. Lay the machine at the horizontal position if must take the step.

Parking instructions

Forbid to park in danger area

Park at the stable roads, forbidden in danger area

Fasten the wheels when parking at bevelled level

Forbid to park in bevelled level, fasten the wheels if must

Ignition method



warnings

- Start the engine at ventilation area to avoid get poisoned
- start the engine after confirm safety background
- Make sure the clutch at the stop position before start the engine to avoid the machine running to cause any accidents

cautions

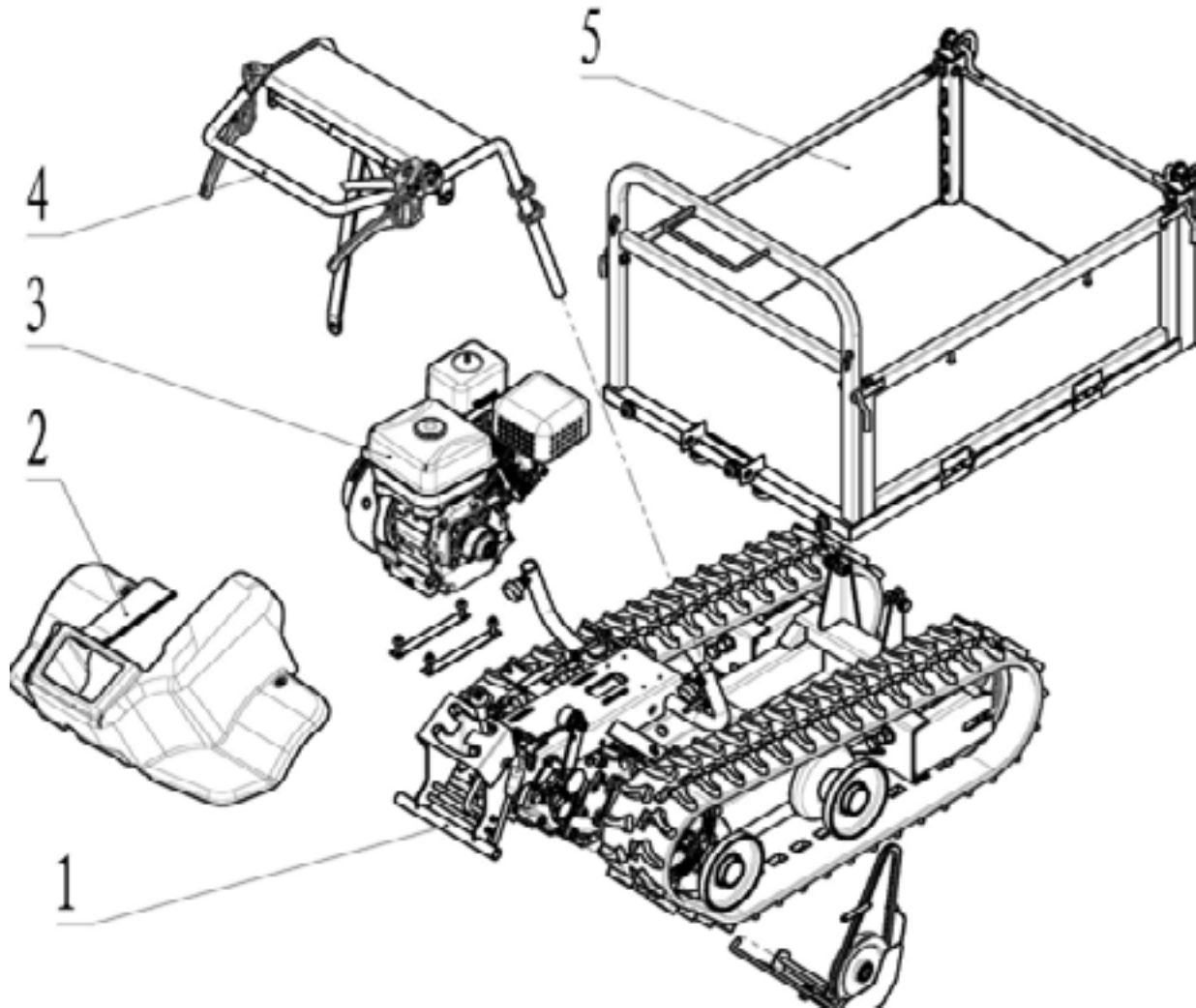
At winter or dry and cold environment, please warm up before driving, if not .will reduce the service for the machine

1. Make sure the clutch in stop position
2. Make sure the gearshift at neutral position
3. Turn the fuel tap to the ON position
4. Turn the throttle valve to the OFF position Suggestions: no need this step when the engine is hot
5. Turn the accelerating lever to the high position a little
6. Turn the main switch to the ON position
7. Pull the cable, start the engine
8. Turn the accelerating lever to the lower position after running the engine
9. Turn the throttle valve to the stiring position
10. 1-2 minutes working without any burden to warm up the machine suggestions After you have the machine, the first week(about 40-50H)just for running, avoid any overloading

Driving method

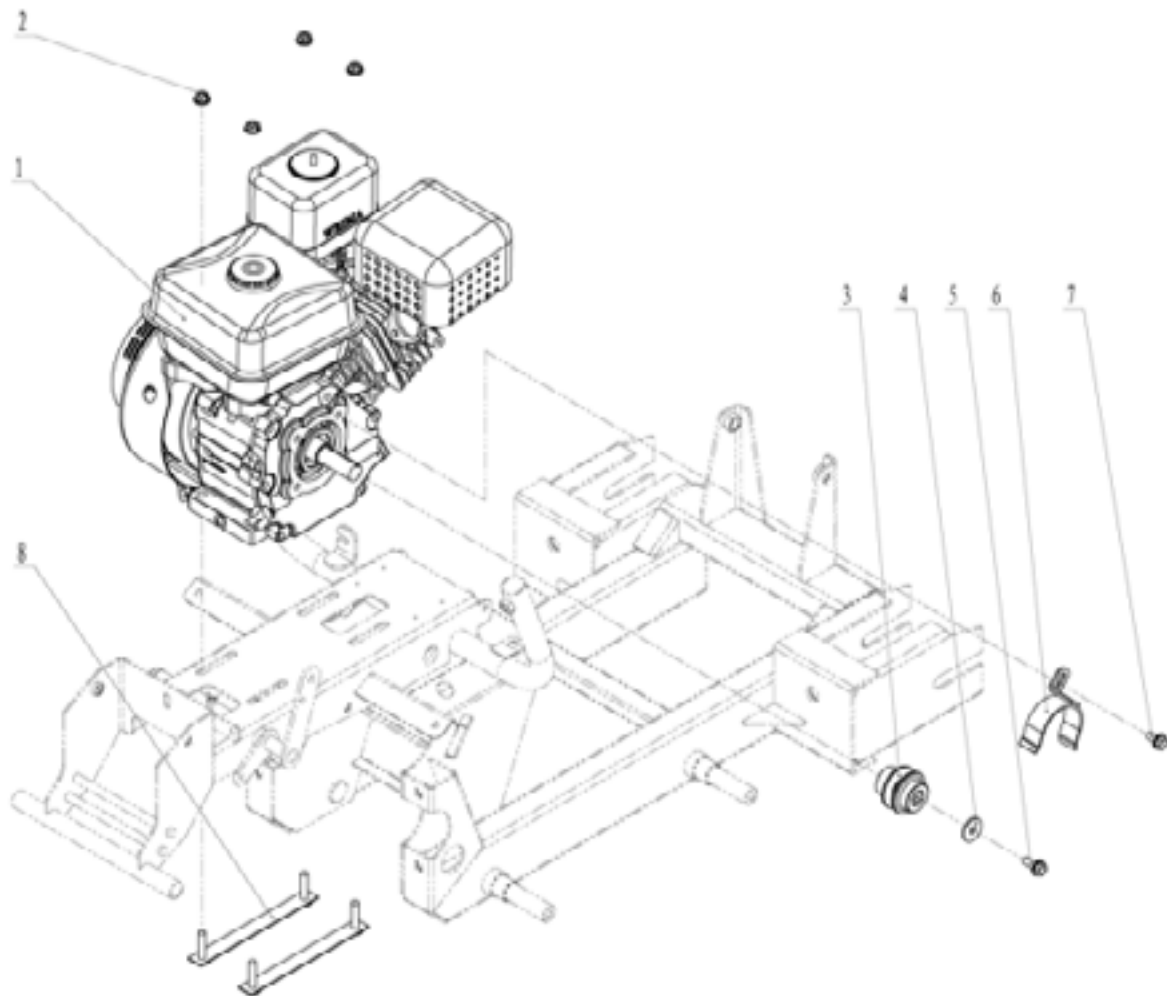
1. Make sure the safety affairs around the machine
2. Make sure the clutch at the stop position
3. Turn the gear lever and sub-gear lever to the neutral position suggestions About the walking speed for each gear lever, please refer the technical data.Turn the clutch forward to walking side slightly if gear lever can not move, then you can turn it again
4. Turn the accelerating lever forward to HIGH position, can speed up the output rotary speed.
5. turn the clutch to start position to start the machine
6. Turning left, operate the left clutch handle
7. Turning right, operate the right clutch handle

MACHINE WHOLE PARTS-A



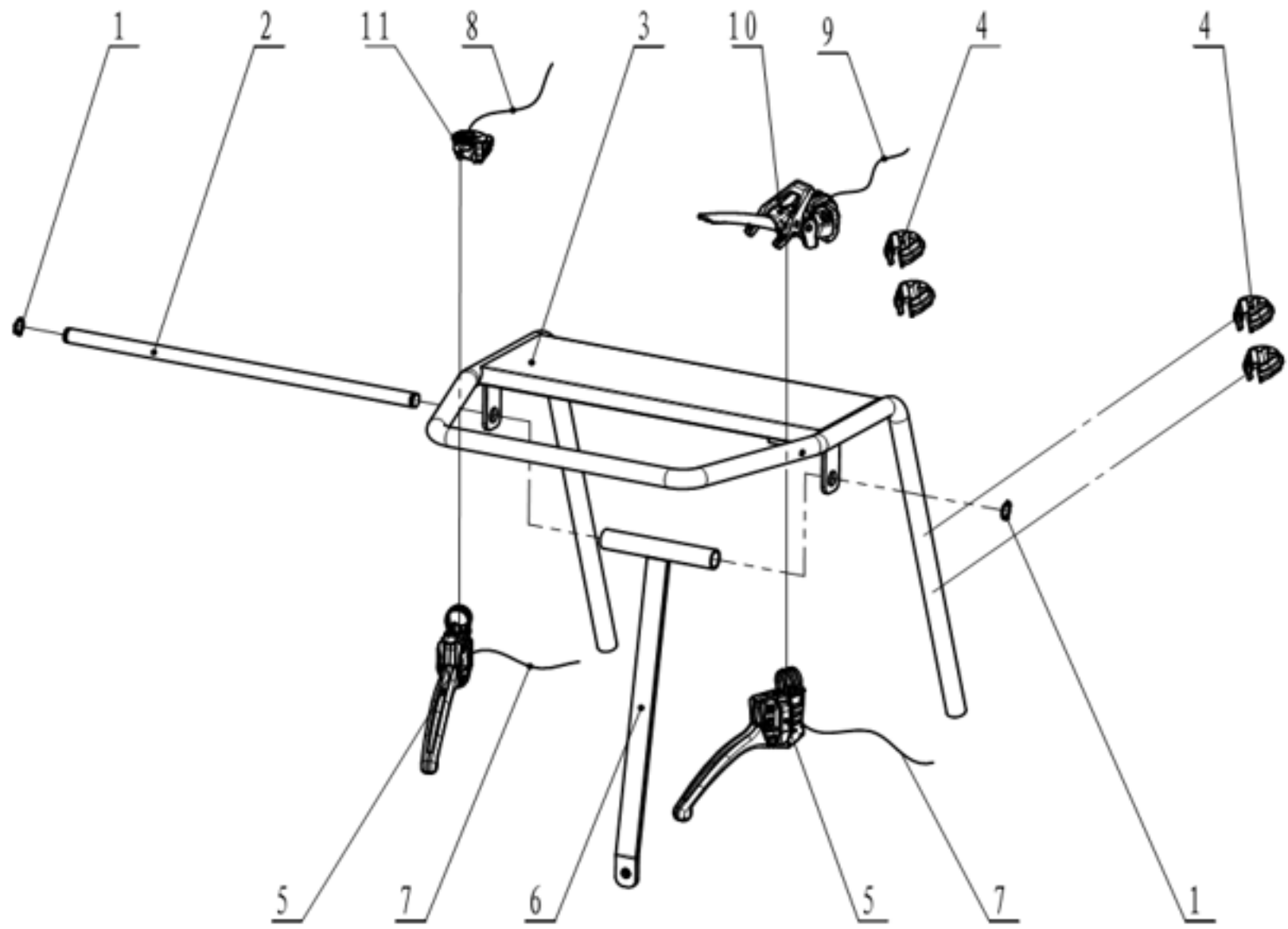
SL NO	PART NO	DESCRIPTION
1	AM-MT-320M-TA01	Chassis and gear box comp
2	AM-MT-320M-TA02	Cover and belt comp
3	AM-MT-320M-TA03	Engine
4	AM-MT-320M-TA04	Handle bar components
5	AM-MT-320M-TA05	Container comp

ENGINE PARTS - B



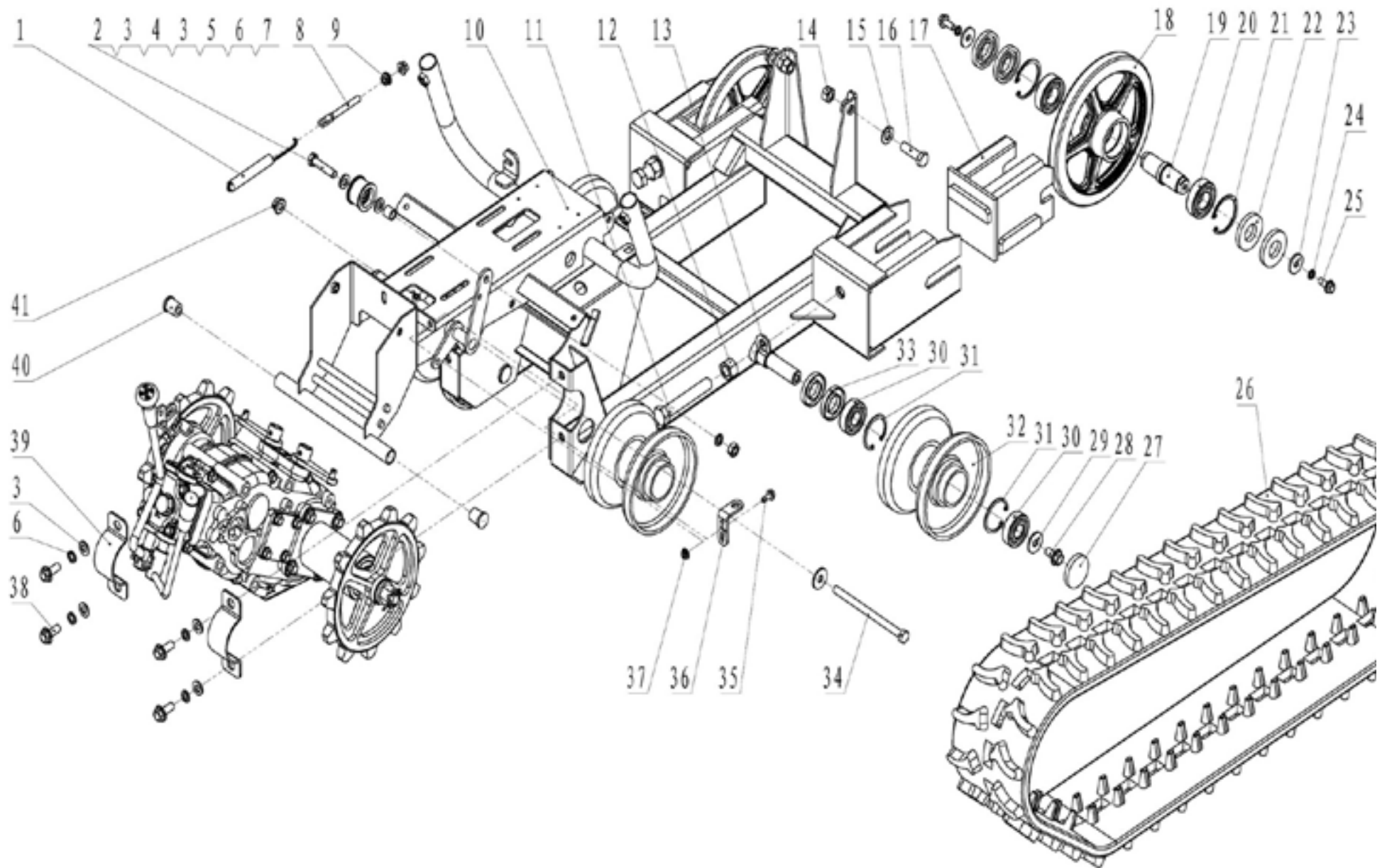
SL NO	PART NO	DESCRIPTION
1	AM-MT-320M-TB01	Gasoline engine AM170F/P
2	AM-MT-320M-TB02	Nut Flange
3	AM-MT-320M-TB03	Small belt pulley
4	AM-MT-320M-TB04	Washer 8, Special
5	AM-MT-320M-TB05	Flange Bolt
6	AM-MT-320M-TB06	Small belt pulley cover
7	AM-MT-320M-TB07	Flange Bolt
8	AM-MT-320M-TB08	Engine assembling support

Handle bar components - C



SL NO	PART NO	DESCRIPTION
1	AM-MT-320M-TC01	Clip Shaft lock,
2	AM-MT-320M-TC02	Long shaft
3	AM-MT-320M-TC03	Handle bar
4	AM-MT-320M-TC04	Cable clip
5	AM-MT-320M-TC05	turning clutch handle
6	AM-MT-320M-TC06	Support welding part
7	AM-MT-320M-TC07	turning cable, AKT style
8	AM-MT-320M-TC08	throttle cable,CE style
9	AM-MT-320M-TC09	clutch cable,CE style
10	AM-MT-320M-TC10	Lower pressure clutch handle
11	AM-MT-320M-TC11	shut down switch

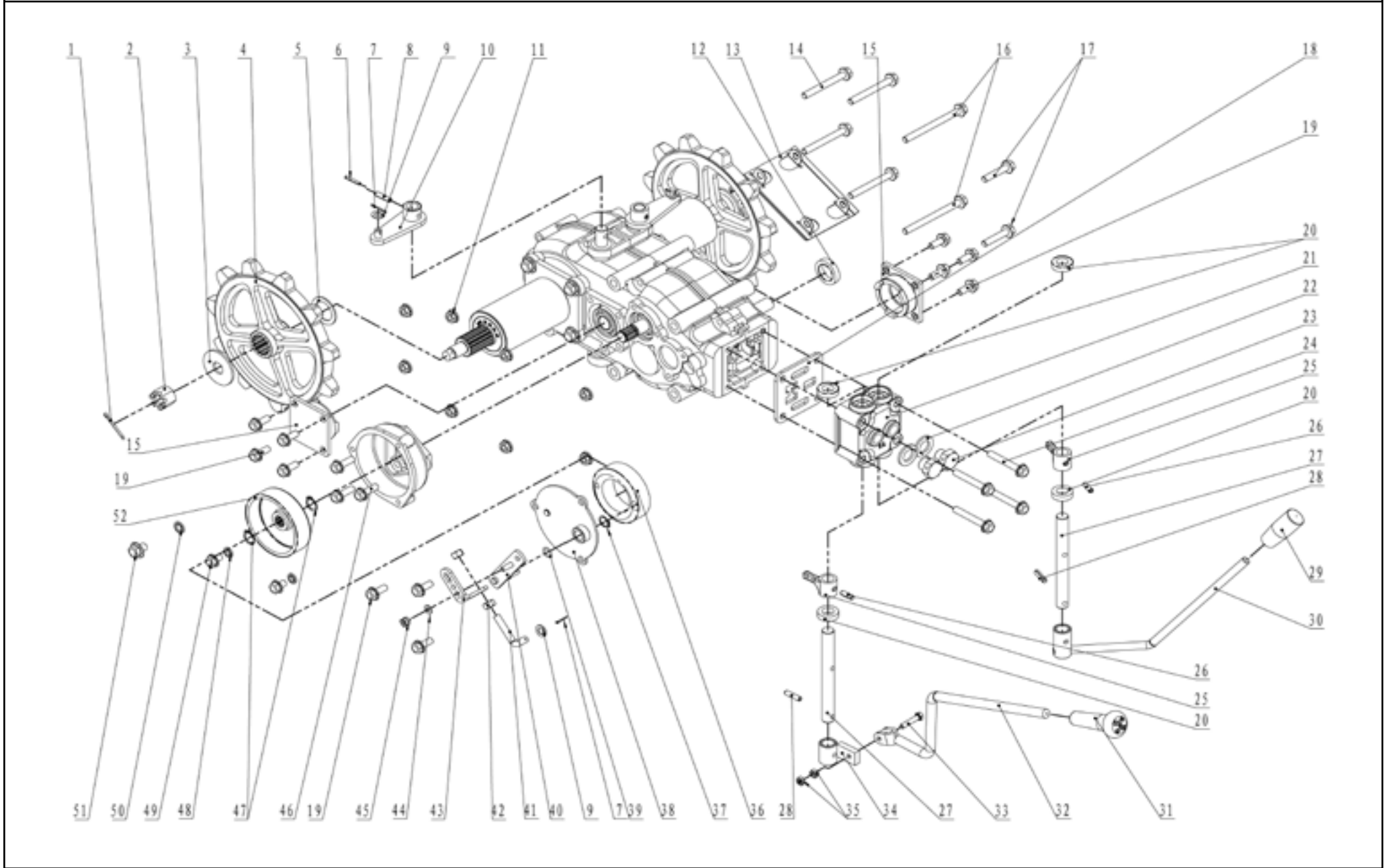
CHASSIS AND GEAR BOX COMP 1 - D



SL NO	PART NO	DESCRIPTION	SL NO	PART NO	DESCRIPTION
1	AM-MT-320M-TD01	CE tension spring	14	AM-MT-320M-TD14	Nut
2	AM-MT-320M-TD02	Bolt	15	AM-MT-320M-TD15	Washer
3	AM-MT-320M-TD03	Washer	16	AM-MT-320M-TD16	Bolt
4	AM-MT-320M-TD04	Tension pulley comp	17	AM-MT-320M-TD17	Tensioning fork
5	AM-MT-320M-TD05	Sheath	18	AM-MT-320M-TD18	Tension pulley
6	AM-MT-320M-TD06	Washer Spring	19	AM-MT-320M-TD19	Tension wheel shaft
7	AM-MT-320M-TD07	Nut	20	AM-MT-320M-TD20	Bearing Ball
8	AM-MT-320M-TD08	Adjustable short rod	21	AM-MT-320M-TD21	Retaining ring
9	AM-MT-320M-TD09	Nut Flange	22	AM-MT-320M-TD22	Oil seal
10	AM-MT-320M-TD10	Buttom frame comp	23	AM-MT-320M-TD23	Washer
11	AM-MT-320M-TD11	Bolt	24	AM-MT-320M-TD24	Washer Spring
12	AM-MT-320M-TD12	Nut	25	AM-MT-320M-TD25	Flange Bolt
13	AM-MT-320M-TD13	Washer	26	AM-MT-320M-TD26	Rubber pedrail

SL NO	PART NO	DESCRIPTION	SL NO	PART NO	DESCRIPTION
27	AM-MT-320M-TD27	Thrust wheel oil plug	36	AM-MT-320M-TD36	Camshaft arm plate
28	AM-MT-320M-TD28	Flange Bolt	37	AM-MT-320M-TD37	Nut Flange
29	AM-MT-320M-TD29	Washer	38	AM-MT-320M-TD38	Flange Bolt
30	AM-MT-320M-TD30	Bearing Ball	39	AM-MT-320M-TD39	Output shaft platen
31	AM-MT-320M-TD31	Retaining ring	40	AM-MT-320M-TD40	Rubber plug
32	AM-MT-320M-TD32	Thrust wheel welding	41	AM-MT-320M-TD41	Nut Flange
33	AM-MT-320M-TD33	Oil seal			
34	AM-MT-320M-TD34	Bolt			
35	AM-MT-320M-TD35	Flange Bolt			

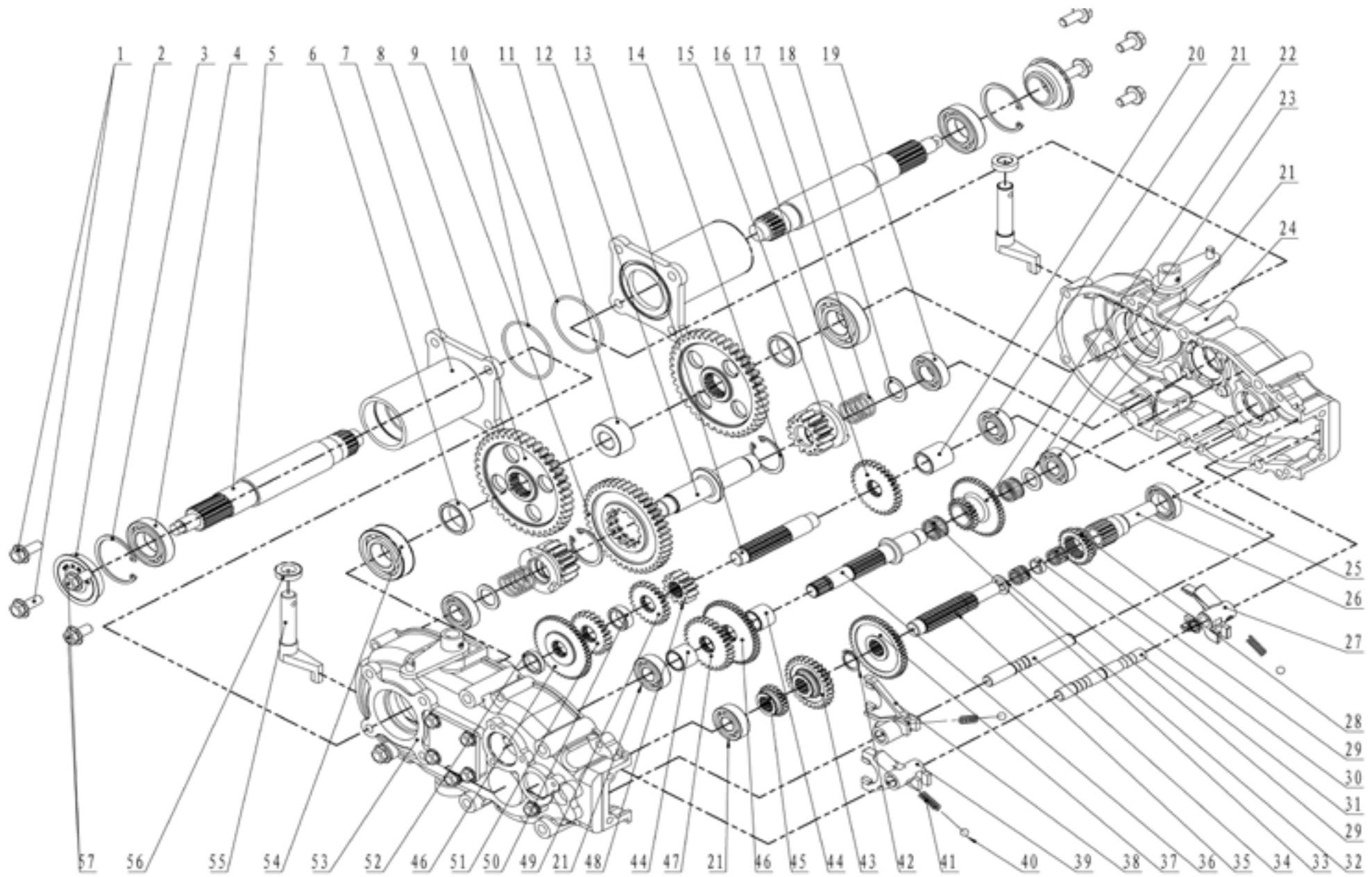
CHASSIS AND GEAR BOX COMP 2 - E



SL NO	PART NO	DESCRIPTION	SL NO	PART NO	DESCRIPTION
1	AM-MT-320M-TE01	Pin	17	AM-MT-320M-TE17	Flange Bolt
2	AM-MT-320M-TE02	Flange nut	18	AM-MT-320M-TE18	Lever limit place
3	AM-MT-320M-TE03	Washer	19	AM-MT-320M-TE19	Flange bolt
4	AM-MT-320M-TE04	Driving pulley	20	AM-MT-320M-TE20	Oil seal
5	AM-MT-320M-TE05	V shaft outside gasket	21	AM-MT-320M-TE21	Fork lever box
6	AM-MT-320M-TE06	Cylindrical pin 3.5×24	22	AM-MT-320M-TE22	Combination airproof
7	AM-MT-320M-TE07	Pin	23	AM-MT-320M-TE23	Breather plug
8	AM-MT-320M-TE08	Cylindrical pin	24	AM-MT-320M-TE24	Flange Bolt
9	AM-MT-320M-TE09	Washer	25	AM-MT-320M-TE25	Driving lever
10	AM-MT-320M-TE10	Turning detached arm	26	AM-MT-320M-TE26	Pin
11	AM-MT-320M-TE11	Nut Flange	27	AM-MT-320M-TE27	Driving lever shaft
12	AM-MT-320M-TE12	Oil seal	28	AM-MT-320M-TE28	Cylindrical pin
13	AM-MT-320M-TE13	Tramission box guard board	29	AM-MT-320M-TE29	Grip rubber
14	AM-MT-320M-TE14	Flange Bolt	30	AM-MT-320M-TE30	High-Low gear change lever
15	AM-MT-320M-TE15	Stop motion plate	31	AM-MT-320M-TE31	12 rod sheath
16	AM-MT-320M-TE16	Flange Bolt	32	AM-MT-320M-TE32	Shift gear lever

SL NO	PART NO	DESCRIPTION	SL NO	PART NO	DESCRIPTION
33	AM-MT-320M-TE33	Bolt	45	AM-MT-320M-TE45	Locker Nut
34	AM-MT-320M-TE34	Shift gear lever sheath	46	AM-MT-320M-TE46	Flange Bolt
35	AM-MT-320M-TE35	Nut	47	AM-MT-320M-TE47	Clip 16,Shaft lock,
36	AM-MT-320M-TE36	Brkea piece	48	AM-MT-320M-TE48	Combination airproof
37	AM-MT-320M-TE37	Clip 14,Shaft lock,	49	AM-MT-320M-TE49	Flange Bolt
38	AM-MT-320M-TE38	Break box welding part	50	AM-MT-320M-TE50	Combination airproof
39	AM-MT-320M-TE39	O-ring	51	AM-MT-320M-TE51	Flange Bolt
40	AM-MT-320M-TE40	Break box turning arm weld- ing part	52	AM-MT-320M-TE52	Drum break
41	AM-MT-320M-TE41	Hook-headed screw			
42	AM-MT-320M-TE42	Nut			
43	AM-MT-320M-TE43	Camshaft arm plate			
44	AM-MT-320M-TE44	Washer			

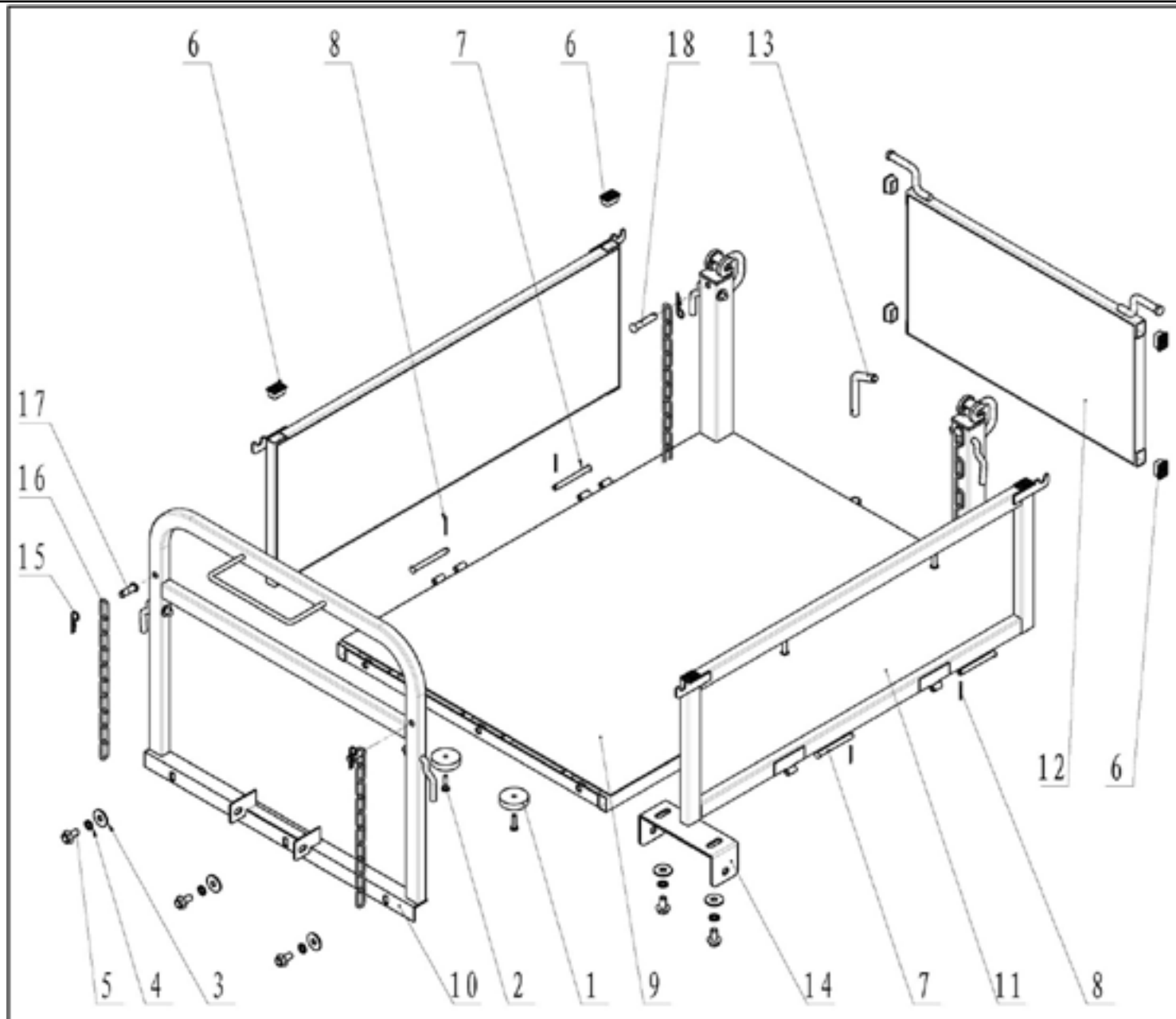
CHASSIS AND GEAR BOX COMP 3 - F



SL NO	PART NO	DESCRIPTION	SL NO	PART NO	DESCRIPTION
1	AM-MT-320M-TF01	Flange Bolt	17	AM-MT-320M-TF17	Walikng return spring
2	AM-MT-320M-TF02	Combination oil seal	18	AM-MT-320M-TF18	IV shaft gasket
3	AM-MT-320M-TF03	Clip	19	AM-MT-320M-TF19	Bearing Ball
4	AM-MT-320M-TF04	Bearing Ball	20	AM-MT-320M-TF20	III Shaft long sheath
5	AM-MT-320M-TF05	V shaft	21	AM-MT-320M-TF21	Bearing Ball
6	AM-MT-320M-TF06	V shaft sheath	22	AM-MT-320M-TF22	Vice speed double-toothed gear
7	AM-MT-320M-TF07	Support seat	23	AM-MT-320M-TF23	II shaft thin gasket
8	AM-MT-320M-TF08	V shaft driven gear	24	AM-MT-320M-TF24	Right case cover
9	AM-MT-320M-TF09	IV shaft driven gear	25	AM-MT-320M-TF25	Bearing Ball
10	AM-MT-320M-TF10	O-ring	26	AM-MT-320M-TF26	Input shaft
11	AM-MT-320M-TF11	V shaft connection sheath	27	AM-MT-320M-TF27	High-Low speed fork
12	AM-MT-320M-TF12	IV shaft	28	AM-MT-320M-TF28	Vice speed slippage gear
13	AM-MT-320M-TF13	III Shaft	29	AM-MT-320M-TF29	Needle bearing
14	AM-MT-320M-TF14	Clip	30	AM-MT-320M-TF30	Input shaft clip
15	AM-MT-320M-TF15	Turning gear	31	AM-MT-320M-TF31	Up fork
16	AM-MT-320M-TF16	2nd gear driven gear	32	AM-MT-320M-TF32	Gasket between input shaft and I shaft

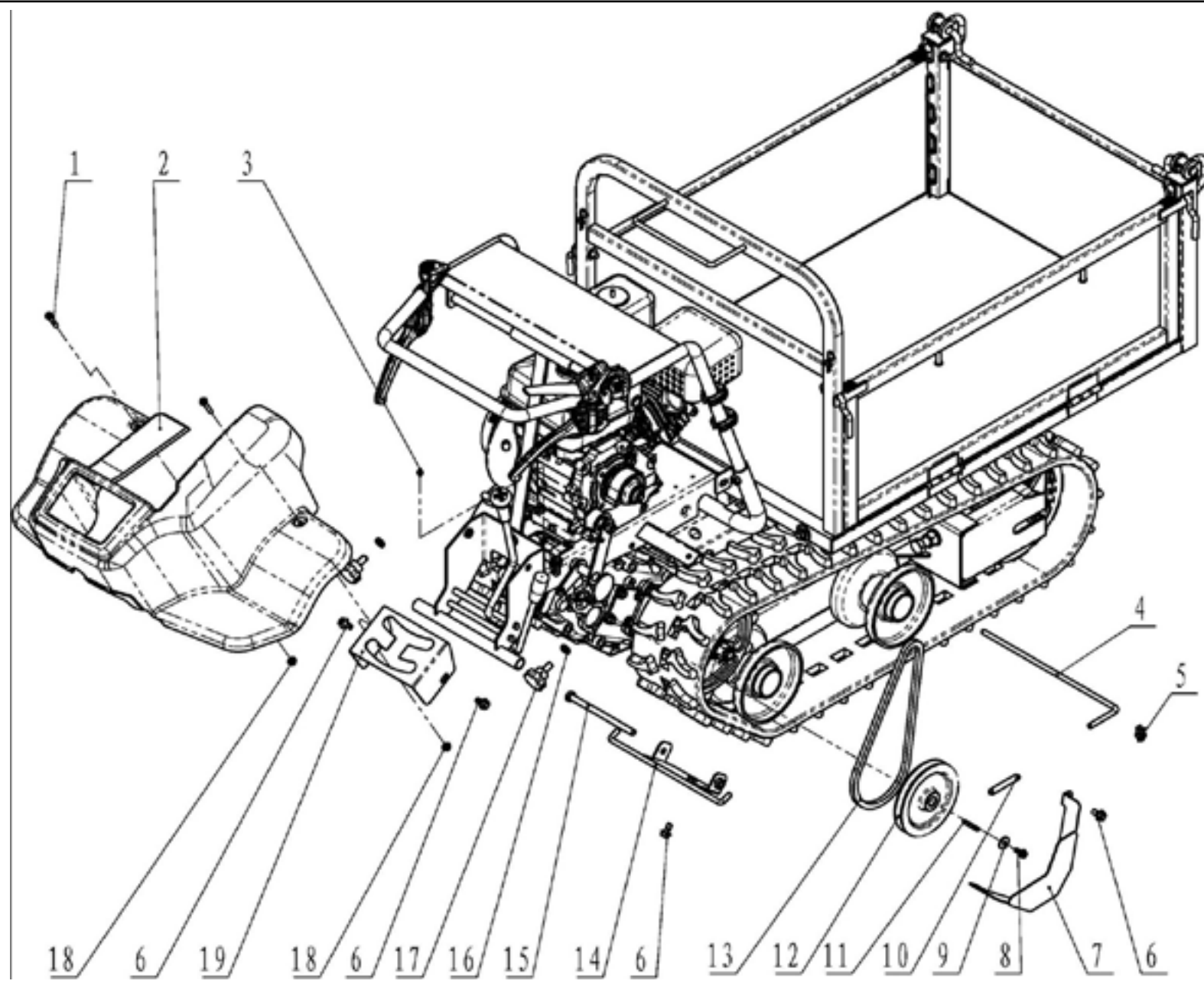
SL NO	PART NO	DESCRIPTION	SL NO	PART NO	DESCRIPTION
33	AM-MT-320M-TF33	Needle bearing	47	AM-MT-320M-TF47	II shaft driving gear
34	AM-MT-320M-TF34	Down fork	48	AM-MT-320M-TF48	III gear driving gear
35	AM-MT-320M-TF35	I shaft	49	AM-MT-320M-TF49	III gear driven gear
36	AM-MT-320M-TF36	II shaft	50	AM-MT-320M-TF50	III shaft middle sheath
37	AM-MT-320M-TF37	Vice speed driven gear	51	AM-MT-320M-TF51	III shaft driven gear
38	AM-MT-320M-TF38	2-3 gear fork	52	AM-MT-320M-TF52	III shaft short sheath
39	AM-MT-320M-TF39	1-R gear fork	53	AM-MT-320M-TF53	Left case cover
40	AM-MT-320M-TF40	Steel ball	54	AM-MT-320M-TF54	Bearing Ball
41	AM-MT-320M-TF41	Spring	55	AM-MT-320M-TF55	Turning separate fork
42	AM-MT-320M-TF42	Clip 20,Shaft lock,	56	AM-MT-320M-TF56	Oil seal
43	AM-MT-320M-TF43	2-3 slippage gear	57	AM-MT-320M-TF57	Flange Bolt
44	AM-MT-320M-TF44	II shaft sheath	58	AM-MT-320M-TF58	cylindrical pin
45	AM-MT-320M-TF45	1-R slippage gear			
46	AM-MT-320M-TF46	1-R driven gear			

CONTAINER COMP- G



SL NO	PART NO	DESCRIPTION	SL NO	PART NO	DESCRIPTION
1	AM-MT-320M-TG01	Cushion	11	AM-MT-320M-TG11	Container side board
2	AM-MT-320M-TG02	Cross pan head screw	12	AM-MT-320M-TG12	Container back board
3	AM-MT-320M-TG03	Washer	13	AM-MT-320M-TG13	Backboard lockpin
4	AM-MT-320M-TG04	Washer spring	14	AM-MT-320M-TG14	Bottom board support
5	AM-MT-320M-TG05	Flange Bolt	15	AM-MT-320M-TG15	Circlip B
6	AM-MT-320M-TG06	Container plug	16	AM-MT-320M-TG16	Ring chain
7	AM-MT-320M-TG07	Pin	17	AM-MT-320M-TG17	Half-round head pin shaft
8	AM-MT-320M-TG08	Split pin	18	AM-MT-320M-TG18	Half-round head pin shaft
9	AM-MT-320M-TG09	Container under board			
10	AM-MT-320M-TG10	Container front board			






COVER & BELT COMPONENT - H



SL NO	PART NO	DESCRIPTION	SL NO	PART NO	DESCRIPTION
1	AM-MT-320M-TH01	Cross pan head screw	12	AM-MT-320M-TH12	Big belt pulley
2	AM-MT-320M-TH02	Plasctic cover	13	AM-MT-320M-TH13	Belt
3	AM-MT-320M-TH03	Straight forced filling oil cup	14	AM-MT-320M-TH14	Cover suppoort frame
4	AM-MT-320M-TH04	Container stay bar	15	AM-MT-320M-TH15	Bolt
5	AM-MT-320M-TH05	Spring clip	16	AM-MT-320M-TH16	Nut
6	AM-MT-320M-TH06	Flange Bolt	17	AM-MT-320M-TH17	Star handle
7	AM-MT-320M-TH07	Big belt pulley cober	18	AM-MT-320M-TH18	Nut
8	AM-MT-320M-TH08	Flange bolt	19	AM-MT-320M-TH19	Limit plate
9	AM-MT-320M-TH09	Special Washer			
10	AM-MT-320M-TH10	Tension pulley return spring			
11	AM-MT-320M-TH11	Round head key			






WARRANTY CARD

CUSTOMER COPY

DATE _____	DATE OF DELIVERY _____	DEALERS OFFICIAL SEAL	DEALERS SIGN _____
PURCHASERS NAME & ADDRESS _____ _____	 CUSTOMER SIGN		
PRODUCT NAME	PRODUCT SERIAL NO.	INVOICE/DN NO.	
			






I/Will accept the terms and conditions of warranty as in the warranty card

DEALERS COPY

DATE _____	DATE OF DELIVERY _____	DEALERS OFFICIAL SEAL	DEALERS SIGN _____
PURCHASERS NAME & ADDRESS _____ _____	 CUSTOMER SIGN		
PRODUCT NAME	PRODUCT SERIAL NO.	INVOICE/DN NO.	
			

I/Will accept the terms and conditions of warranty as in the warranty card

COMPANY COPY

DATE _____	DATE OF DELIVERY _____	DEALERS OFFICIAL SEAL	DEALERS SIGN _____
PURCHASERS NAME & ADDRESS _____ _____	 CUSTOMER SIGN		
PRODUCT NAME	PRODUCT SERIAL NO.	INVOICE/DN NO.	
			

I/Will accept the terms and conditions of warranty as in the warranty card

1. LIMITED WARRANTY PERIOD : For a period of six months from the date of Sale / delivery of the product which ever is earlier. 2. LIMITED WARRANTY OBLIGATION : Replacement of defective part(s) by authorized dealer are free of charges. If found defective by reasons of defective material / poor workmanship, parts will be replaced and there will be no value re-imburement. 3. TERMS & CONDITIONS : a. Claims under warranty will be accepted on submission of Warranty Card duly filled and stamped by authorized dealer together with the original purchase document. : b. Shipping / transportation / Incidental charges incurred in replacing defective parts under warranty shall be borne by the purchaser

WARRANTY null & void if

- (i) Lack of maintenance, (ii) Incorrect use of the machine or tampering, (iii) Use of non-genuine spare parts, (iv) Usage of acids, solvents, or any flammable materials, (v) Non-usage of filter water / clear water / soft water & using water above 40°C temperature, (vi) While using the pressure washers to draw water which is contaminated with dust & solvents (eg. paint thinners, gasoline, oil, etc.), (vii) Repair done by unauthorized service people, (viii) Those parts subject to wear & tear due to normal operations and plastic parts, rubber items etc, (ix) Loose connections, faulty electrical fixtures & fluctuations in power supply.
- 4. Should any failure occur during or after the warranty period, customer does not have the right to interrupt payment / price discount.
- 5. Incidental or consequential damages like inconvenience commercial loss, loss of tie, mental agony etc.
- 6. Loss of any nature due to operation or non-operation is not covered under warranty.
- 7. All free service are at Dealer's service point only.
- 8. Warranty ceases if service is not done periodically.
- 9. The attached card should be completed and returned to Ratnagiri Impex Pvt. Ltd. for registration immediately after sale / delivery.
- 10. The warranty is void unless you register the warranty card with Ratnagiri Impex Pvt. Ltd.
- 11. The decision of Ratnagiri Impex Pvt. Ltd., in settling the warranty is final in all respects.
- 12. All disputes are subject to Bangalore Courts Jurisdiction

1. LIMITED WARRANTY PERIOD : For a period of six months from the date of Sale / delivery of the product which ever is earlier. 2. LIMITED WARRANTY OBLIGATION : Replacement of defective part(s) by authorized dealer are free of charges. If found defective by reasons of defective material / poor workmanship, parts will be replaced and there will be no value re-imburement. 3. TERMS & CONDITIONS : a. Claims under warranty will be accepted on submission of Warranty Card duly filled and stamped by authorized dealer together with the original purchase document. : b. Shipping / transportation / Incidental charges incurred in replacing defective parts under warranty shall be borne by the purchaser.

WARRANTY null & void if

- (i) Lack of maintenance, (ii) Incorrect use of the machine or tampering, (iii) Use of non-genuine spare parts, (iv) Usage of acids, solvents, or any flammable materials, (v) Non-usage of filter water / clear water / soft water & using water above 40°C temperature, (vi) While using the pressure washers to draw water which is contaminated with dust & solvents (eg. paint thinners, gasoline, oil, etc.), (vii) Repair done by unauthorized service people, (viii) Those parts subject to wear & tear due to normal operations and plastic parts, rubber items etc, (ix) Loose connections, faulty electrical fixtures & fluctuations in power supply.
- 4. Should any failure occur during or after the warranty period, customer does not have the right to interrupt payment / price discount.
- 5. Incidental or consequential damages like inconvenience commercial loss, loss of tie, mental agony etc.
- 6. Loss of any nature due to operation or non-operation is not covered under warranty.
- 7. All free service are at Dealer's service point only.
- 8. Warranty ceases if service is not done periodically.
- 9. The attached card should be completed and returned to Ratnagiri Impex Pvt. Ltd. for registration immediately after sale / delivery.
- 10. The warranty is void unless you register the warranty card with Ratnagiri Impex Pvt. Ltd.
- 11. The decision of Ratnagiri Impex Pvt. Ltd., in settling the warranty is final in all respects.
- 12. All disputes are subject to Bangalore Courts Jurisdiction

1. LIMITED WARRANTY PERIOD : For a period of six months from the date of Sale / delivery of the product which ever is earlier. 2. LIMITED WARRANTY OBLIGATION : Replacement of defective part(s) by authorized dealer are free of charges. If found defective by reasons of defective material / poor workmanship, parts will be replaced and there will be no value re-imburement. 3. TERMS & CONDITIONS : a. Claims under warranty will be accepted on submission of Warranty Card duly filled and stamped by authorized dealer together with the original purchase document. : b. Shipping / transportation / Incidental charges incurred in replacing defective parts under warranty shall be borne by the purchaser.

WARRANTY null & void if

- (i) Lack of maintenance, (ii) Incorrect use of the machine or tampering, (iii) Use of non-genuine spare parts, (iv) Usage of acids, solvents, or any flammable materials, (v) Non-usage of filter water / clear water / soft water & using water above 40°C temperature, (vi) While using the pressure washers to draw water which is contaminated with dust & solvents (eg. paint thinners, gasoline, oil, etc.), (vii) Repair done by unauthorized service people, (viii) Those parts subject to wear & tear due to normal operations and plastic parts, rubber items etc, (ix) Loose connections, faulty electrical fixtures & fluctuations in power supply.
- 4. Should any failure occur during or after the warranty period, customer does not have the right to interrupt payment / price discount.
- 5. Incidental or consequential damages like inconvenience commercial loss, loss of tie, mental agony etc.
- 6. Loss of any nature due to operation or non-operation is not covered under warranty.
- 7. All free service are at Dealer's service point only.
- 8. Warranty ceases if service is not done periodically.
- 9. The attached card should be completed and returned to Ratnagiri Impex Pvt. Ltd. for registration immediately after sale / delivery.
- 10. The warranty is void unless you register the warranty card with Ratnagiri Impex Pvt. Ltd.
- 11. The decision of Ratnagiri Impex Pvt. Ltd., in settling the warranty is final in all respects.
- 12. All disputes are subject to Bangalore Courts Jurisdiction



FREE SERVICE COUPON (30DAYS/30HRS. WHICHEVER IS EARLIER)

MODEL	<input type="text"/>	SERIAL NUMBER	<input type="text"/>
PDI DATE	SERVICE NO.	PURCHASE BILL NO.	DATE
<input type="text"/>	<input type="text"/>	<input type="text"/>	<input type="text"/>
DEALERS OFFICE SEAL	OPERATIONS		
<input type="text"/>	<ol style="list-style-type: none"> 1. Check and test the fuel mixture 3. Check , clean and adjust the spark plug 5. Check and sparken the cutting tools 7. Start and check the noise, vibration, loosen etc.. 	<ol style="list-style-type: none"> 2. check and clean the air filter 4. Check and adjust the carburetor tuning 6. Product familirisation on usage 8. Routine maintenance and shortage. 	

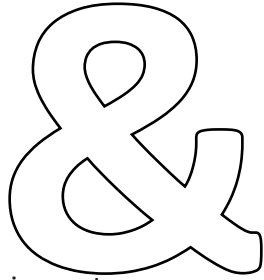
FREE SERVICE COUPON (30DAYS/30HRS. WHICHEVER IS EARLIER)

MODEL	<input type="text"/>	SERIAL NUMBER	<input type="text"/>
PDI DATE	SERVICE NO.	PURCHASE BILL NO.	DATE
<input type="text"/>	<input type="text"/>	<input type="text"/>	<input type="text"/>
DEALERS OFFICE SEAL	OPERATIONS		
<input type="text"/>	<ol style="list-style-type: none"> 1. Check and test the fuel mixture 3. Check , clean and adjust the spark plug 5. Check and sparken the cutting tools 7. Start and check the noise, vibration, loosen etc.. 	<ol style="list-style-type: none"> 2. check and clean the air filter 4. Check and adjust the carburetor tuning 6. Product familirisation on usage 8. Routine maintenance and shortage. 	

FREE SERVICE COUPON (30DAYS/30HRS. WHICHEVER IS EARLIER)

MODEL	<input type="text"/>	SERIAL NUMBER	<input type="text"/>
PDI DATE	SERVICE NO.	PURCHASE BILL NO.	DATE
<input type="text"/>	<input type="text"/>	<input type="text"/>	<input type="text"/>
DEALERS OFFICE SEAL	OPERATIONS		
<input type="text"/>	<ol style="list-style-type: none"> 1. Check and test the fuel mixture 3. Check , clean and adjust the spark plug 5. Check and sparken the cutting tools 7. Start and check the noise, vibration, loosen etc.. 	<ol style="list-style-type: none"> 2. check and clean the air filter 4. Check and adjust the carburetor tuning 6. Product familirisation on usage 8. Routine maintenance and shortage. 	

DOS



DONTs

attempting to use the equipments.

1. Always read the instruction manual supplied along with the equipments and understand the correct installation and operating procedures before

trousers and jackets while operating potentially dangerous machines
2. It is important to use the personal protection equipments such as head helmet with visor, ear defenders, goggles, safety gloves, cut resistant shoes,
3. Avoid untrained persons using the equipments. Children must not be allowed to handle these equipments
4. Always use genuine spares and accessories in repairs and usage to derive maximum life of the equipments.
5. Always keep the equipments in good working condition to minimize loss of output as well as to reduce the pollution and save the environment
6. Do not use the machine within range of persons unless they wear protective clothing
7. Do not operate the machine when fatigued or under the influence of alcohol or drugs
8. For more query kindly contact for our Service Center/Dealer/ franchise

NO. 1 CHOICE OF FARMERS SINCE 1999



Marketed by.
**ratnagiri
impex**
BRINGING YOU THE FUTURE... NOW

RATNAGIRI IMPEX PVT., LTD.,

Annapurna House, #1 / 1G, 7th Cross, New
Guddadahalli

Mysore Road, Bangalore - 560 026

Missed Call : 7393 938 938

Email: ask@agrimart.in