

WHEEL TROLLY / TRANSPORTER AM-MT-320M-WT TRANSMISSION PART LIST



TECHNICAL SPECIFICATIONS

WHEEL TROLLY/TRANSPORTER	
MODEL	AM-MT-320M-WT
ENGINE	AM-170FP
POWER	7HP/212CC
NO. OF GEARS	3FORWARD, 1 REVERSE
LOADING CAPACITY	UPTO 350KG

Operation Instructions

Warnings

Forbid to operate, maintain and check the machine before read and mater the instructions Please safe-keep the instructions in order to operate, maintain and check the machine in time.

About the instructions

In order that you can operate our machine more safe, the instructions contains method for operating ,maintain and checking. Correctly operating method is on basis of reading and grasping.

Warnings

Forbid to operate, maintain and check the machine before read and mater the instructions. Please safe-keep the instructions in order to operate, maintain and check the machine in time.

About the machine

Warnings

This machine exists potential dangers, you should operate maintain and check based on the instructions. This machine is for fields convey, not for other ways. Forbid to operate on such roads, national highways. If any accidents in such road ,our factory will not burden any responsibility. Fobid to change the machine, in order to avoid any accidents, forbid to take off the proof cover.

About the warnings items in this instructions

The instructions define warnings to below parts based on danger level(or accidents level) Please get understood for below warning items, and then operate the machine.

item	meaning
dangers	Very dangerous warning, without notice, may cause fatal accidents
warnings	potential dangerous warning, without notice, may cause fatal accidents
cautions	potential dangerous warning, without notice, may cause accidents or injury. Even will harm the machine.
suggestions	Attract one attention, or feedback your advice



1. Safety affairs

Safety driving, safety operating

General safety precautions must comply with this record of driving, operation. Driving operation must be in accordance with the provisions of the articles of association of security matters, always remember to safe driving, safety operation.

1.1 Before driving instructions



The right to wear safety clothing, and wear the safety guard Do not wear the leisure clothes like vests, shorts and sandals when operating.

Check before operation



Check carefully before start,any fault,need remove timely. Fire forbidden Fire away from fuel. Futuremore,add the fuel after engine off.

Fire Forbidden



Fire away from fuel.

Futuremore,add the fuel after engine off.

Loading cautions

forbid over loading

Forbid to load over the max capacity for this machine

correct to load the goods

In order to avoid placing uneven, let the machine roll over, please place them even and fasten with rope, moreover, should avoid the height to ensure the sight view

cautions for quantity restrictions

When crossing the wood bridge, please make sure the total quantity of machine, goods and operator lower than max bearing quantity. And cross within limited speed.

cautions for loading capacity at the bevelled level

At the degree 15-20 bevelled level, loading capacity should control within 150KG. when at 20-25, should bear nothing to drive. Forbid to drive while the level over 25 degrees. Forbid to shift while overloading or at bevelled level

forbid to operate the bucket while at bevelled level

Forbid to operate the bucket while at bevelled level, which will let the machine roll over. Lay the machine at the horizontal position if must take the step.

Parking instructions

Forbid to park in danger area

Park at the stable roads, forbidden in danger area

Fasten the wheels when parking at bevelled level

Forbid to park in bevelled level, fasten the wheels if must

Ignition method



warnings

- Start the engine at ventilation area to avoid get poisoned
- start the engine after confirm safety background
- Make sure the clutch at the stop position before start the engine to avoid the machine running to cause any accidents

cautions

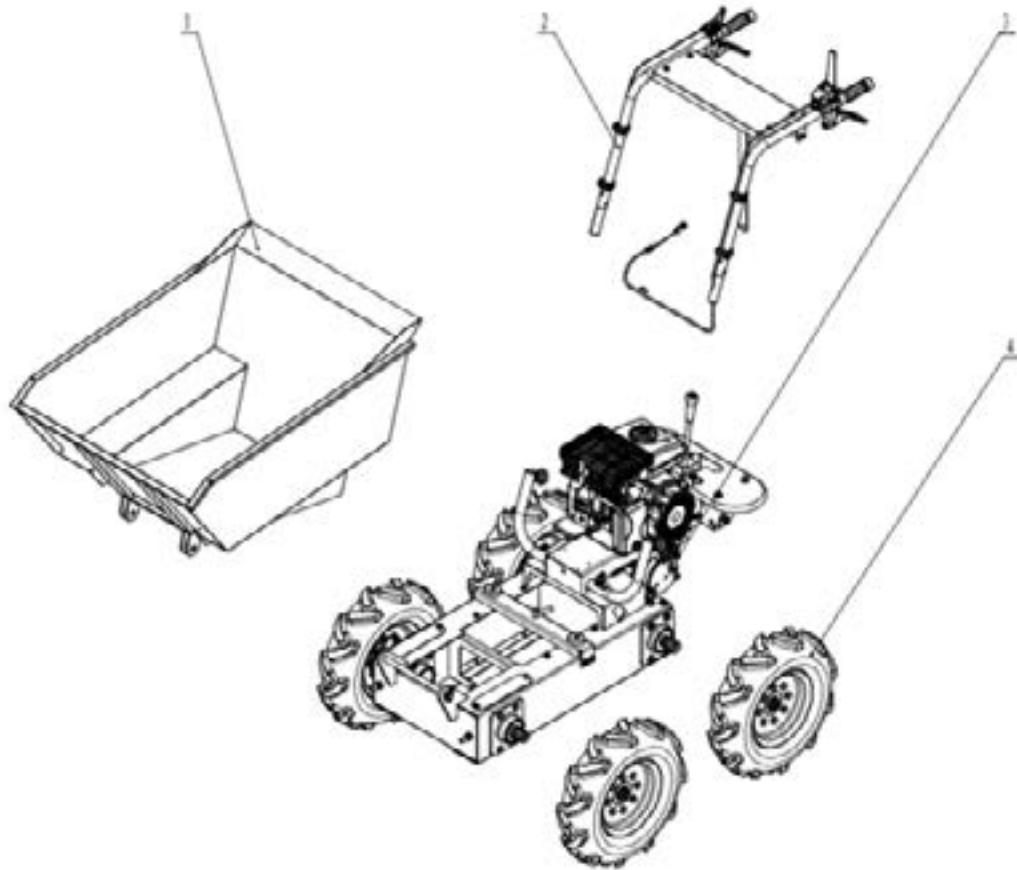
At winter or dry and cold environment, please warm up before driving, if not .will reduce the service for the machine

1. Make sure the clutch in stop position
2. Make sure the gearshift at neutral position
3. Turn the fuel tap to the ON position
4. Turn the throttle valve to the OFF position Suggestions: no need this step when the engine is hot
5. Turn the accelerating lever to the high position a little
6. Turn the main switch to the ON position
7. Pull the cable, start the engine
8. Turn the accelerating lever to the lower position after running the engine
9. Turn the throttle valve to the stiring position
10. 1-2 minutes working without any burden to warm up the machine suggestions After you have the machine, the first week(about 40-50H)just for running, avoid any overloading

Driving method

1. Make sure the safety affairs around the machine
2. Make sure the clutch at the stop position
3. Turn the gear lever and sub-gear lever to the neutral position suggestions About the walking speed for each gear lever, please refer the technical data.Turn the clutch forward to walking side slightly if gear lever can not move, then you can turn it again
4. Turn the accelerating lever forward to HIGH position, can speed up the output rotary speed.
5. turn the clutch to start position to start the machine
6. Turning left, operate the left clutch handle
7. Turning right, operate the right clutch handle

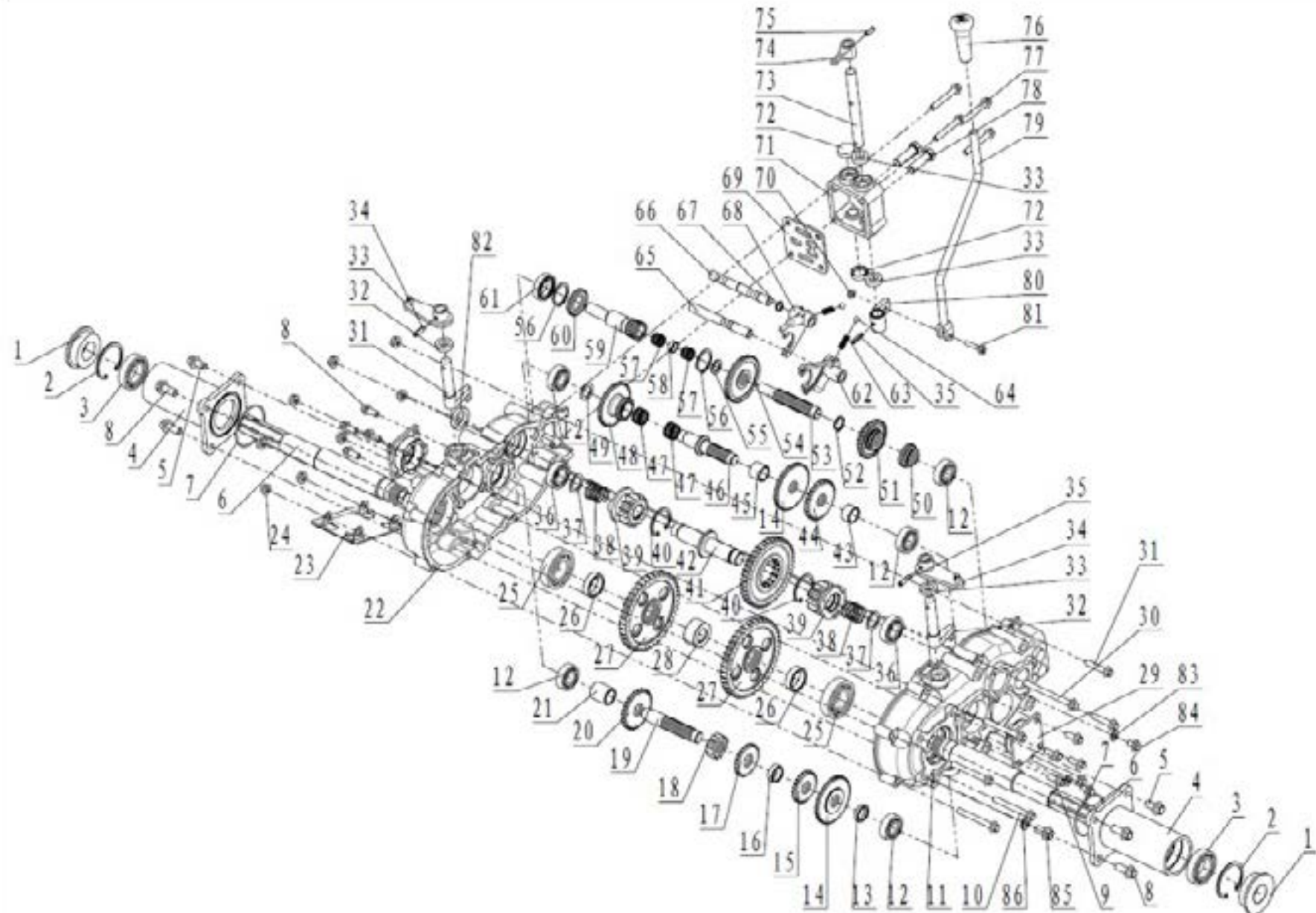
MACHINE WHOLE PARTS-A



SL NO	PART NO	DESCRIPTION
1	AM-MT-320M-WT-TA01	Container comp
2	AM-MT-320M-WT-TA02	Handle bar components
3	AM-MT-320M-WT-TA03	Chassis comp
4	AM-MT-320M-WT-TA04	Wheels assy

SL NO	PART NO	DESCRIPTION
1	AM-MT-320M-WT-TB01	Nut
2	AM-MT-320M-WT-TB02	Clutch handle
3	AM-MT-320M-WT-TB03	Φ25 grip
4	AM-MT-320M-WT-TB04	welding assembly for left lever
5	AM-MT-320M-WT-TB05	Bolt
6	AM-MT-320M-WT-TB06	Turning cable
7	AM-MT-320M-WT-TB07	line-card
8	AM-MT-320M-WT-TB08	connecting panel
9	AM-MT-320M-WT-TB09	Throttle cable
10	AM-MT-320M-WT-TB10	welding assembly for right lever
11	AM-MT-320M-WT-TB11	shut down switch
12	AM-MT-320M-WT-TB12	welding assembly
13	AM-MT-320M-WT-TB13	welding assembly

CHASSIS COMP 1 - C

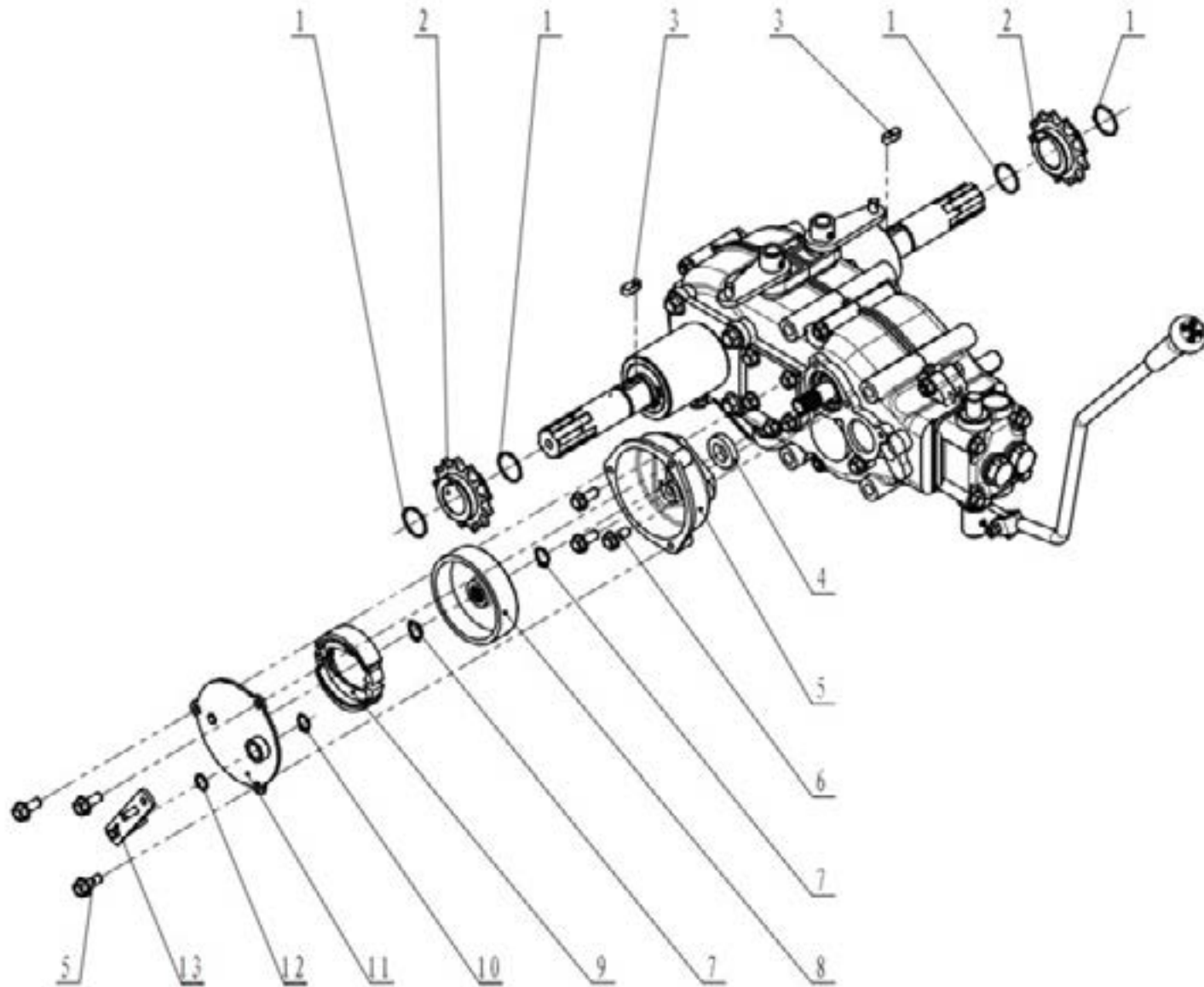


SL NO	PART NO	DESCRIPTION	SL NO	PART NO	DESCRIPTION
1	AM-MT-320M-WT-TC01	Oil seal	17	AM-MT-320M-WT-TC17	Three-speed driven gear
2	AM-MT-320M-WT-TC02	Circlips for holes	18	AM-MT-320M-WT-TC18	Three-speed driving gear
3	AM-MT-320M-WT-TC03	Deep groove ball bearings	19	AM-MT-320M-WT-TC19	III axis
4	AM-MT-320M-WT-TC04	Support seat weldment	20	AM-MT-320M-WT-TC20	Second gear driven gear
5	AM-MT-320M-WT-TC05	Hexagon flange bolt	21	AM-MT-320M-WT-TC21	III shaft long sleeve
6	AM-MT-320M-WT-TC06	V axis	22	AM-MT-320M-WT-TC22	Shell (right)
7	AM-MT-320M-WT-TC07	O-ring	23	AM-MT-320M-WT-TC23	Gearbox guard plate
8	AM-MT-320M-WT-TC08	Hexagon flange bolt	24	AM-MT-320M-WT-TC24	Hex flange nut
9	AM-MT-320M-WT-TC09	Hexagon flange bolt	25	AM-MT-320M-WT-TC25	Deep groove ball bearing
10	AM-MT-320M-WT-TC10	Hexagon flange bolt	26	AM-MT-320M-WT-TC26	V shaft sleeve
11	AM-MT-320M-WT-TC11	Shell (left)	27	AM-MT-320M-WT-TC27	V-axis driven gear
12	AM-MT-320M-WT-TC12	Deep groove ball bearings	28	AM-MT-320M-WT-TC28	V-axis connection sleeve
13	AM-MT-320M-WT-TC13	III shaft short sleeve	29	AM-MT-320M-WT-TC29	Stop seat
14	AM-MT-320M-WT-TC14	1R block driven gear	30	AM-MT-320M-WT-TC30	Hexagon flange bolt
15	AM-MT-320M-WT-TC15	III-axis driven gear	31	AM-MT-320M-WT-TC31	Hexagon flange bolt
16	AM-MT-320M-WT-TC16	III shaft sleeve	32	AM-MT-320M-WT-TC32	Steering separation fork

SL NO	PART NO	DESCRIPTION	SL NO	PART NO	DESCRIPTION
33	AM-MT-320M-WT-TC33	Oil seal	49	AM-MT-320M-WT-TC49	II shaft gasket
34	AM-MT-320M-WT-TC34	Steering separation arm assembly	50	AM-MT-320M-WT-TC50	1R block slip gear
35	AM-MT-320M-WT-TC35	Elastic cylindrical pin rolled standard type	51	AM-MT-320M-WT-TC51	Second and third gear slip gear
36	AM-MT-320M-WT-TC36	Deep groove ball bearing	52	AM-MT-320M-WT-TC52	Circlip for shaft
37	AM-MT-320M-WT-TC37	IV shaft gasket	53	AM-MT-320M-WT-TC53	I axis
38	AM-MT-320M-WT-TC38	Tension loop spring	54	AM-MT-320M-WT-TC54	Auxiliary transmission driven gear
39	AM-MT-320M-WT-TC39	Steering gear	55	AM-MT-320M-WT-TC55	Input shaft and I shaft gasket
40	AM-MT-320M-WT-TC40	Circlip for hole	56	AM-MT-320M-WT-TC56	Circlip for shaft
41	AM-MT-320M-WT-TC41	IV axis driven gear	57	AM-MT-320M-WT-TC57	Needle bearing
42	AM-MT-320M-WT-TC42	IV axis	58	AM-MT-320M-WT-TC58	Input shaft retaining ring
43	AM-MT-320M-WT-TC43	Bushing	59	AM-MT-320M-WT-TC59	Input shaft
44	AM-MT-320M-WT-TC44	II axis driving gear	60	AM-MT-320M-WT-TC60	Auxiliary gear shifting gear
45	AM-MT-320M-WT-TC45	II shaft sleeve	61	AM-MT-320M-WT-TC61	Deep groove ball bearings
46	AM-MT-320M-WT-TC46	axis	62	AM-MT-320M-WT-TC62	Second and third gear shift fork
47	AM-MT-320M-WT-TC47	Needle bearing	63	AM-MT-320M-WT-TC63	Gear compression spring
48	AM-MT-320M-WT-TC48	Auxiliary transmission double gear	64	AM-MT-320M-WT-TC64	Steel ball

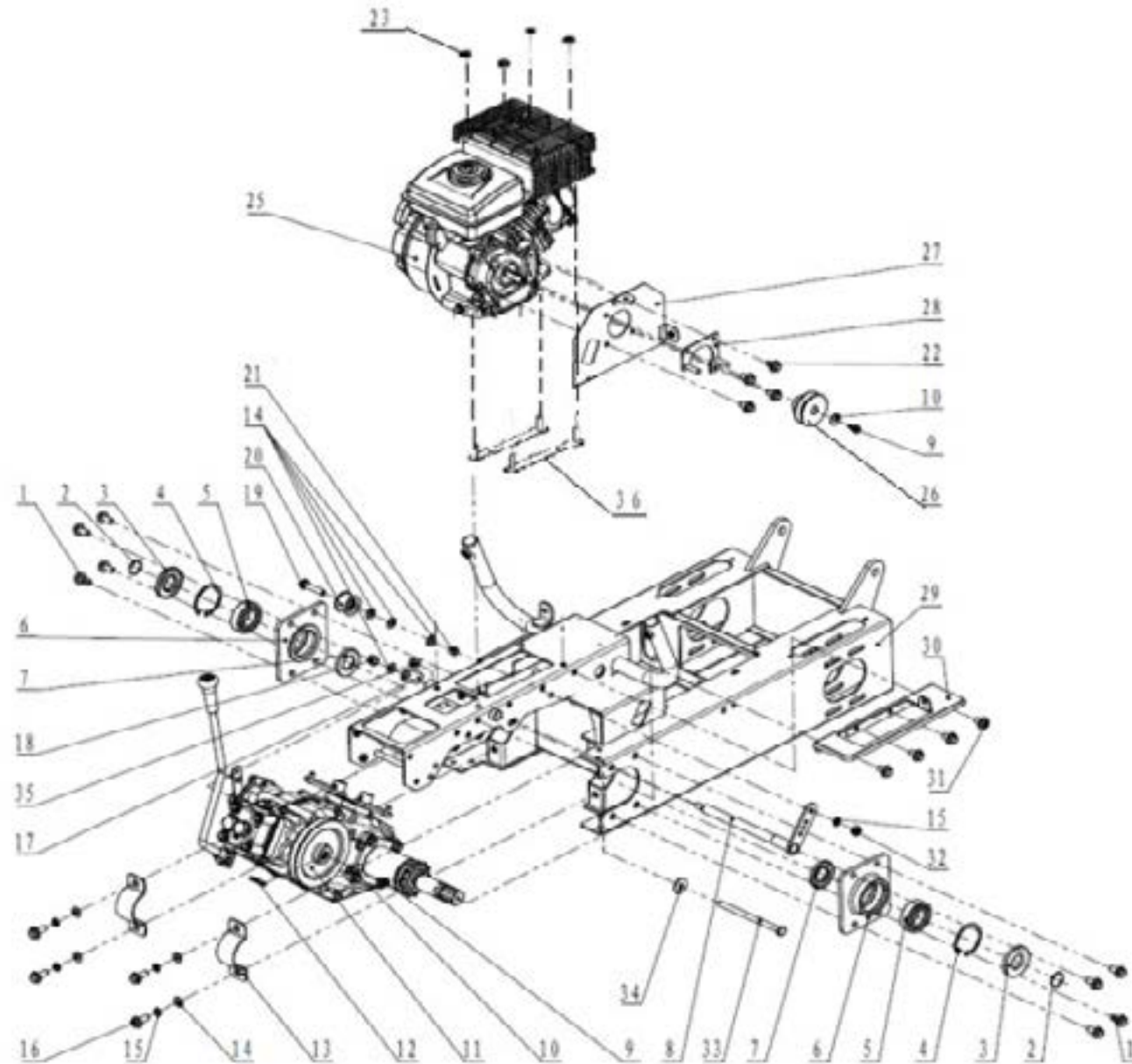
SL NO	PART NO	DESCRIPTION	SL NO	PART NO	DESCRIPTION
65	AM-MT-320M-WT-TC65	Lower fork shaft	78	AM-MT-320M-WT-TC78	Vent plug
66	AM-MT-320M-WT-TC66	Upper fork shaft	79	AM-MT-320M-WT-TC79	Shift lever
67	AM-MT-320M-WT-TC67	Circlip for shaft	80	AM-MT-320M-WT-TC80	Gear lever set
68	AM-MT-320M-WT-TC68	Reverse gear fork	81	AM-MT-320M-WT-TC81	Hexagon flange bolt
69	AM-MT-320M-WT-TC69	Lever limit plate	82	AM-MT-320M-WT-TC82	Oil seal
70	AM-MT-320M-WT-TC70	Type 1 hexagon nut	83	AM-MT-320M-WT-TC83	Combination gasket
71	AM-MT-320M-WT-TC71	Fork lever box	84	AM-MT-320M-WT-TC84	Hexagon flange bolt
72	AM-MT-320M-WT-TC72	Oil plug	85	AM-MT-320M-WT-TC85	Hex flange bolt
73	AM-MT-320M-WT-TC73	Lever shaft	86	AM-MT-320M-WT-TC86	Combination gasket
74	AM-MT-320M-WT-TC74	Lever			
75	AM-MT-320M-WT-TC75	Elastic cylindrical pin rolled standard type			
76	AM-MT-320M-WT-TC76	Damping grip (with gear mark)			
77	AM-MT-320M-WT-TC77	Hexagon flange bolt			

CHASSIS ASSY - 2 - D



SL NO	PART NO	DESCRIPTION	SL NO	PART NO	DESCRIPTION
1	AM-MT-320M-WT-TD 01	Wire retaining ring for shaft			
2	AM-MT-320M-WT-TD 02	Drive sprocket			
3	AM-MT-320M-WT-TD 03	Key			
4	AM-MT-320M-WT-TD 04	Oil seal			
5	AM-MT-320M-WT-TD 05	Brake box			
6	AM-MT-320M-WT-TD 06	Hexagon flange bolt small series			
7	AM-MT-320M-WT-TD 07	Circlip for shaft			
8	AM-MT-320M-WT-TD 08	Brake drum			
9	AM-MT-320M-WT-TD 09	Brake pads			
10	AM-MT-320M-WT-TD 10	Circlip for shaft			
11	AM-MT-320M-WT-TD 11	Brake cover weldment			
12	AM-MT-320M-WT-TD 12	O-ring			
13	AM-MT-320M-WT-TD 13	Brake box cam arm welding parts			

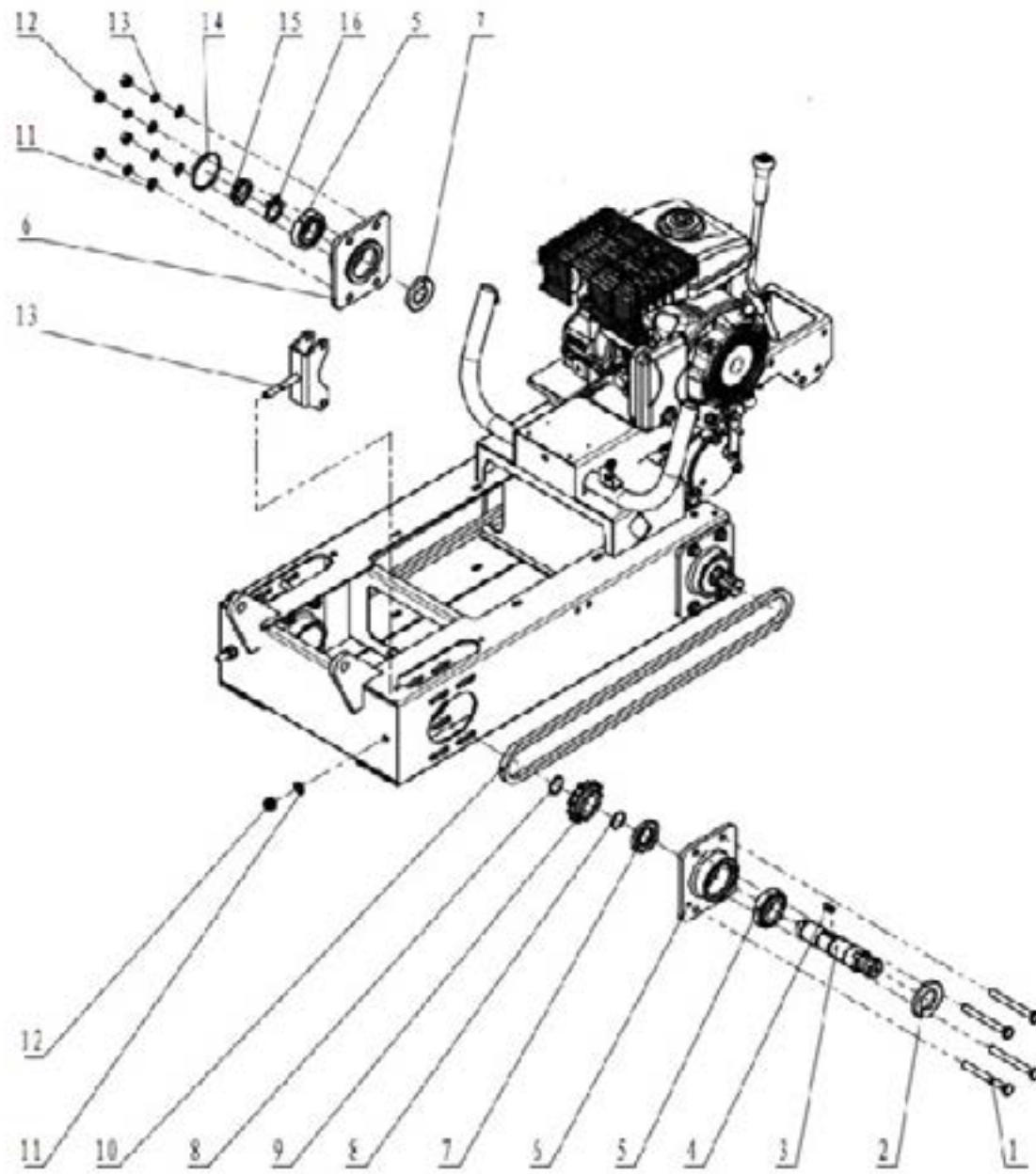
CHASSIS ASSY (3) -E



SL NO	PART NO	DESCRIPTION	SL NO	PART NO	DESCRIPTION
1	AM-MT-320M-WT-TE01	Hexagon flange bolt small series	10	AM-MT-320M-WT-TE10	Extra large washer C grade
2	AM-MT-320M-WT-TE02	Wire retaining ring for shaft	11	AM-MT-320M-WT-TE11	Big pulley
3	AM-MT-320M-WT-TE03	Oil seal	12	AM-MT-320M-WT-TE12	Key
4	AM-MT-320M-WT-TE04	Circlip for hole	13	AM-MT-320M-WT-TE13	Output shaft pressure plate
5	AM-MT-320M-WT-TE05	Deep groove ball bearing	14	AM-MT-320M-WT-TE14	Flat washer A grade
6	AM-MT-320M-WT-TE06	Bearing seat	15	AM-MT-320M-WT-TE15	Standard spring washer
7	AM-MT-320M-WT-TE07	Oil seal	16	AM-MT-320M-WT-TE16	Hexagon flange bolt small series
8	AM-MT-320M-WT-TE08	Brake shaft	17	AM-MT-320M-WT-TE17	Brake arm
9	AM-MT-320M-WT-TE09	Hexagon flange bolts B grade	18	AM-MT-320M-WT-TE18	Type 1 hexagon lock nut

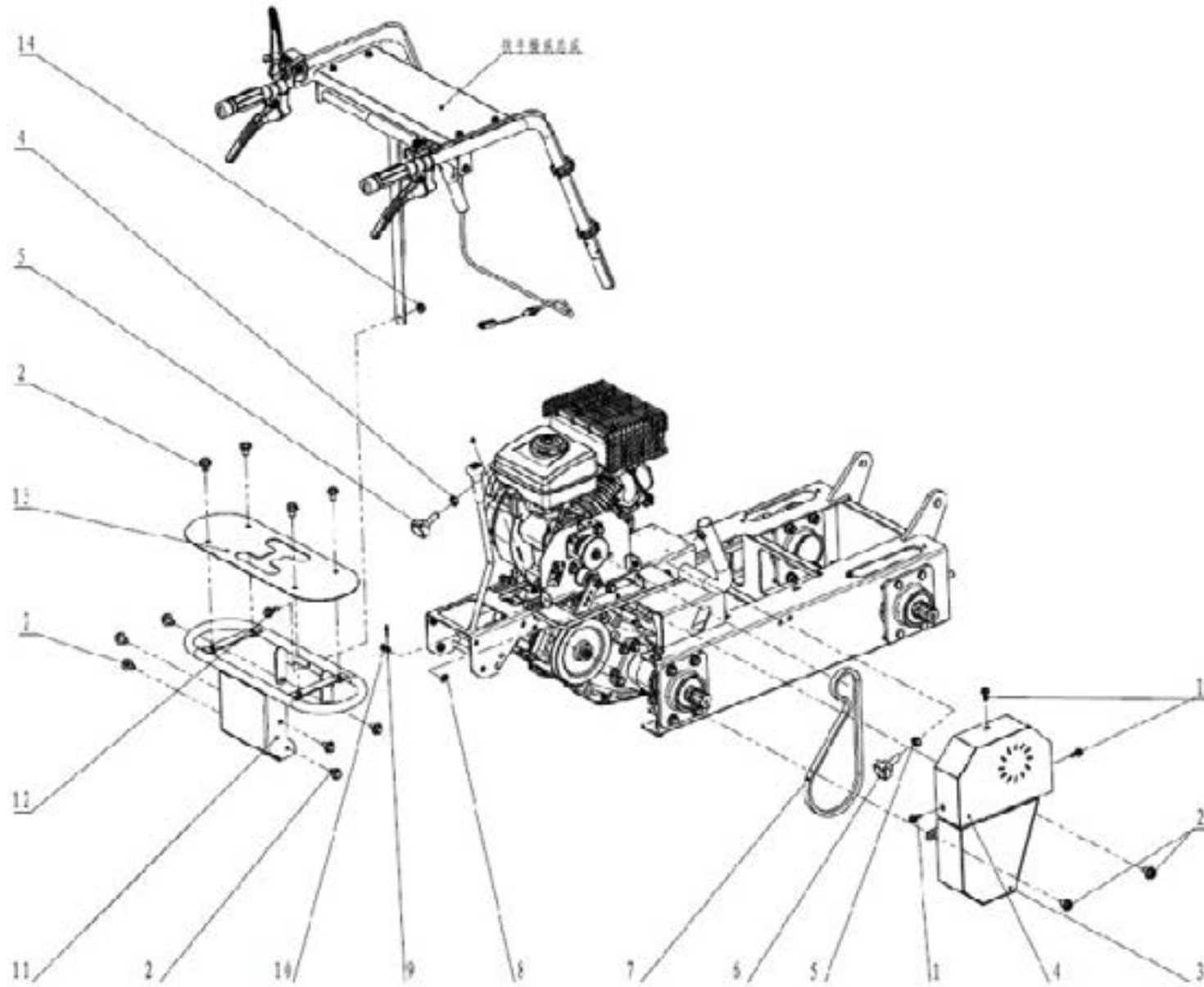
SL NO	PART NO	DESCRIPTION	SL NO	PART NO	DESCRIPTION
19	AM-MT-320M-WT-TE19	Hexagon flange bolt small series	29	AM-MT-320M-WT-TE29	Underframe assembly
20	AM-MT-320M-WT-TE20	Tension pulley comp	30	AM-MT-320M-WT-TE30	Right bracket
21	AM-MT-320M-WT-TE21	Bushing	31	AM-MT-320M-WT-TE31	Hexagon flange bolt small series
22	AM-MT-320M-WT-TE22	Hexagon flange bolt small series	32	AM-MT-320M-WT-TE32	Type 1 hex nut
23	AM-MT-320M-WT-TE23	nut	33	AM-MT-320M-WT-TE33	Hexagon head bolt
24	AM-MT-320M-WT-TE24	NA	34	AM-MT-320M-WT-TE34	Large Washer A
25	AM-MT-320M-WT-TE25	Engine	35	AM-MT-320M-WT-TE35	Type 2 hexagon flange nut
26	AM-MT-320M-WT-TE26	small pulley	36	AM-MT-320M-WT-TE36	Engine mount weldment
27	AM-MT-320M-WT-TE27	Pulley bottom plate			
28	AM-MT-320M-WT-TE28	Belt pressure lever			

CHASSIS ASSY (4) - F



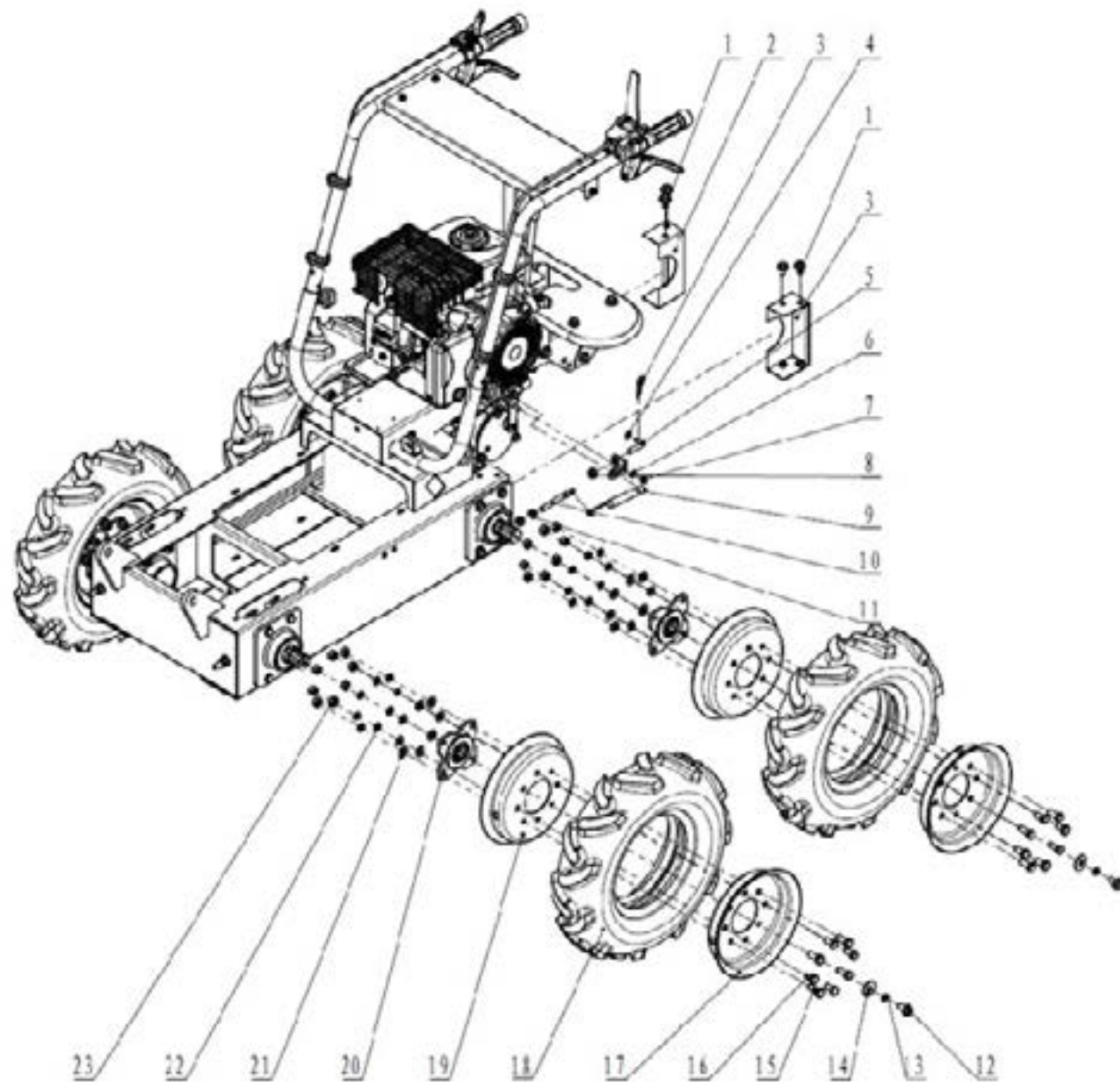
SL NO	PART NO	DESCRIPTION	SL NO	PART NO	DESCRIPTION
1	AM-MT-320M-WT-TF01	Hexagon head bolt	10	AM-MT-320M-WT-TF10	Chain
2	AM-MT-320M-WT-TF02	Oil seal	11	AM-MT-320M-WT-TF11	Flat washer A grade
3	AM-MT-320M-WT-TF03	Half shaft	12	AM-MT-320M-WT-TF12	Type 1 hexagon lock nut
4	AM-MT-320M-WT-TF04	Key	13	AM-MT-320M-WT-TF13	Tension block
5	AM-MT-320M-WT-TF05	Tapered roller bearing	14	AM-MT-320M-WT-TF14	Oil plug
6	AM-MT-320M-WT-TF06	Bearing seat	15	AM-MT-320M-WT-TF15	Small round nut
7	AM-MT-320M-WT-TF07	Oil seal	16	AM-MT-320M-WT-TF16	Stop washers
8	AM-MT-320M-WT-TF08	Wire retaining ring for shaft			
9	AM-MT-320M-WT-TF09	Drive sprocket			

CHASSIS ASSY (5) - G



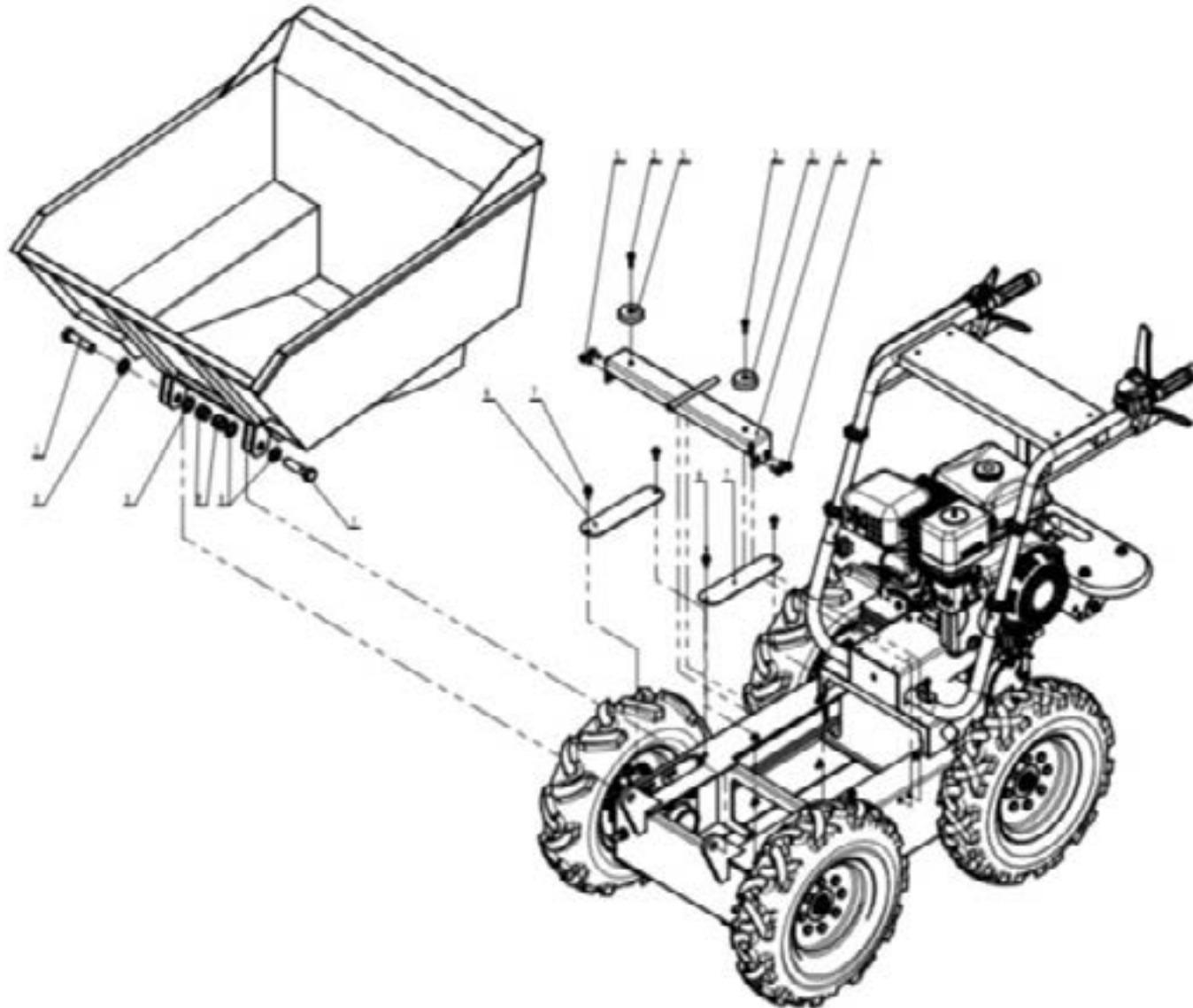
SL NO	PART NO	DESCRIPTION	SL NO	PART NO	DESCRIPTION
1	AM-MT-320M-WT-TG01	Hexagon flange boltse	10	AM-MT-320M-WT-TG10	Pin
2	AM-MT-320M-WT-TG02	Hexagon flange bolt small series	11	AM-MT-320M-WT-TG11	Bumper
3	AM-MT-320M-WT-TG03	Lower belt guard	12	AM-MT-320M-WT-TG12	Hexagon flange bolt small series
4	AM-MT-320M-WT-TG04	Upper belt guard	13	AM-MT-320M-WT-TG13	Cover plate
5	AM-MT-320M-WT-TG05	Hexagon Thin Nut	14	AM-MT-320M-WT-TG14	Type 2 hexagon flange nut
6	AM-MT-320M-WT-TG06	Star handle			
7	AM-MT-320M-WT-TG07	V belt			
8	AM-MT-320M-WT-TG08	Flat washer A grade			
9	AM-MT-320M-WT-TG09	Split pin			

CHASSIS ASSY (6) - H



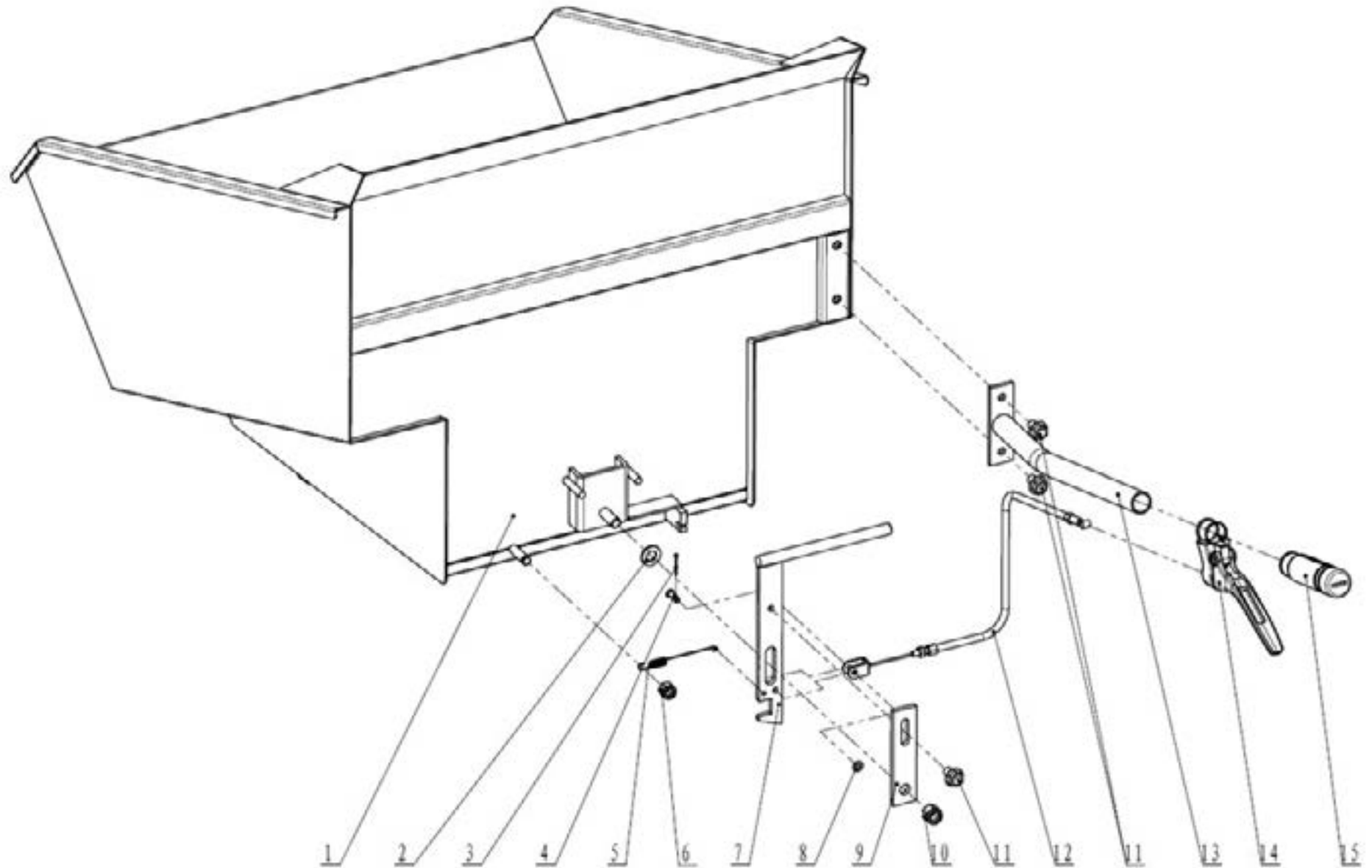
SL NO	PART NO	DESCRIPTION	SL NO	PART NO	DESCRIPTION
1	AM-MT-320M-WT-TH01	Hexagon flange bolt small series	13	AM-MT-320M-WT-TH13	Standard spring washer
2	AM-MT-320M-WT-TH02	Rear cover (right)	14	AM-MT-320M-WT-TH14	Extra Large Washer Class C
3	AM-MT-320M-WT-TH03	Rear cover (left)	15	AM-MT-320M-WT-TH15	Hexagon flange bolt small series
4	AM-MT-320M-WT-TH04	Flat washer A grade	16	AM-MT-320M-WT-TH16	Hexagon flange bolt small series
5	AM-MT-320M-WT-TH05	Hook screw	17	AM-MT-320M-WT-TH17	Outer spokes/holes/4.00-8
6	AM-MT-320M-WT-TH06	Flat washer A grade	18	AM-MT-320M-WT-TH18	inner tube/tire/4.00-8
7	AM-MT-320M-WT-TH07	Type 1 hexagon lock nut	19	AM-MT-320M-WT-TH19	Inner spokes/4.00-8
8	AM-MT-320M-WT-TH08	Type 1 hexagon lock nut	20	AM-MT-320M-WT-TH20	Connecting plate
9	AM-MT-320M-WT-TH09	Brake return spring	21	AM-MT-320M-WT-TH21	Flat washer A grade
10	AM-MT-320M-WT-TH10	Adjustable short rod	22	AM-MT-320M-WT-TH22	Standard spring washer
11	AM-MT-320M-WT-TH11	Type 2 hexagon flange nut	23	AM-MT-320M-WT-TH23	Type 1 hexagon lock nut
12	AM-MT-320M-WT-TH12	Hexagon flange bolt small series			

CARGO COMPARTMENTS ASSY (1) -J



SL NO	PART NO	DESCRIPTION	SL NO	PART NO	DESCRIPTION
1	AM-MT-320M-WT-TJ01	Hexagon flange bolt small series			
2	AM-MT-320M-WT-TJ02	Cross recessed pan head screws			
3	AM-MT-320M-WT-TJ03	Cushion			
4	AM-MT-320M-WT-TJ04	Cargo compartment lock plate			
5	AM-MT-320M-WT-TJ05	Hex head bolt			
6	AM-MT-320M-WT-TJ06	Hexagon flange bolt			
7	AM-MT-320M-WT-TJ07	Cover			
8	AM-MT-320M-WT-TJ08	Flat washer A grade			
9	AM-MT-320M-WT-TJ09	non-metallic insert hex lock nuts			






CARGO COMPARTMENTS ASSY (2) - K



SL NO	PART NO	DESCRIPTION	SL NO	PART NO	DESCRIPTION
1	AM-MT-320M-WT-TK01	Cargo	11	AM-MT-320M-WT-TK11	Hexagon flange bolt small series
2	AM-MT-320M-WT-TK02	Flat washer A grade	12	AM-MT-320M-WT-TK12	Cargo lock hook cable assembly
3	AM-MT-320M-WT-TK03	Split pin	13	AM-MT-320M-WT-TK13	Cargo handle weldment
4	AM-MT-320M-WT-TK04	Pin	14	AM-MT-320M-WT-TK14	Clutch handle
5	AM-MT-320M-WT-TK05	Lock hook return tension spring	15	AM-MT-320M-WT-TK15	Shock absorption grip
6	AM-MT-320M-WT-TK06	Type 1 hexagon lock nut			
7	AM-MT-320M-WT-TK07	Cargo compartment lock hook			
8	AM-MT-320M-WT-TK08	Flat washer A grade			
9	AM-MT-320M-WT-TK09	Lock hook pressure plate			
10	AM-MT-320M-WT-TK10	Type 1 hexagon lock nut			






WARRANTY CARD

CUSTOMER COPY

DATE _____	DATE OF DELIVERY _____	DEALERS OFFICIAL SEAL	DEALERS SIGN _____
PURCHASERS NAME & ADDRESS _____ _____	 CUSTOMER SIGN		
PRODUCT NAME	PRODUCT SERIAL NO.	INVOICE/DN NO.	
			






I/Will accept the terms and conditions of warranty as in the warranty card

DEALERS COPY

DATE _____	DATE OF DELIVERY _____	DEALERS OFFICIAL SEAL	DEALERS SIGN _____
PURCHASERS NAME & ADDRESS _____ _____	 CUSTOMER SIGN		
PRODUCT NAME	PRODUCT SERIAL NO.	INVOICE/DN NO.	
			

I/Will accept the terms and conditions of warranty as in the warranty card

COMPANY COPY

DATE _____	DATE OF DELIVERY _____	DEALERS OFFICIAL SEAL	DEALERS SIGN _____
PURCHASERS NAME & ADDRESS _____ _____	 CUSTOMER SIGN		
PRODUCT NAME	PRODUCT SERIAL NO.	INVOICE/DN NO.	
			

I/Will accept the terms and conditions of warranty as in the warranty card

1. LIMITED WARRANTY PERIOD : For a period of six months from the date of Sale / delivery of the product which ever is earlier. 2. LIMITED WARRANTY OBLIGATION : Replacement of defective part(s) by authorized dealer are free of charges. If found defective by reasons of defective material / poor workmanship, parts will be replaced and there will be no value re-imburement. 3. TERMS & CONDITIONS : a. Claims under warranty will be accepted on submission of Warranty Card duly filled and stamped by authorized dealer together with the original purchase document. : b. Shipping / transportation / Incidental charges incurred in replacing defective parts under warranty shall be borne by the purchaser

WARRANTY null & void if

- (i) Lack of maintenance, (ii) Incorrect use of the machine or tampering, (iii) Use of non-genuine spare parts, (iv) Usage of acids, solvents, or any flammable materials, (v) Non-usage of filter water / clear water / soft water & using water above 40°C temperature, (vi) While using the pressure washers to draw water which is contaminated with dust & solvents (eg. paint thinners, gasoline, oil, etc.), (vii) Repair done by unauthorized service people, (viii) Those parts subject to wear & tear due to normal operations and plastic parts, rubber items etc, (ix) Loose connections, faulty electrical fixtures & fluctuations in power supply.
- 4. Should any failure occur during or after the warranty period, customer does not have the right to interrupt payment / price discount.
- 5. Incidental or consequential damages like inconvenience commercial loss, loss of tie, mental agony etc.
- 6. Loss of any nature due to operation or non-operation is not covered under warranty.
- 7. All free service are at Dealer's service point only.
- 8. Warranty ceases if service is not done periodically.
- 9. The attached card should be completed and returned to Ratnagiri Impex Pvt. Ltd. for registration immediately after sale / delivery.
- 10. The warranty is void unless you register the warranty card with Ratnagiri Impex Pvt. Ltd.
- 11. The decision of Ratnagiri Impex Pvt. Ltd., in settling the warranty is final in all respects.
- 12. All disputes are subject to Bangalore Courts Jurisdiction

1. LIMITED WARRANTY PERIOD : For a period of six months from the date of Sale / delivery of the product which ever is earlier. 2. LIMITED WARRANTY OBLIGATION : Replacement of defective part(s) by authorized dealer are free of charges. If found defective by reasons of defective material / poor workmanship, parts will be replaced and there will be no value re-imburement. 3. TERMS & CONDITIONS : a. Claims under warranty will be accepted on submission of Warranty Card duly filled and stamped by authorized dealer together with the original purchase document. : b. Shipping / transportation / Incidental charges incurred in replacing defective parts under warranty shall be borne by the purchaser.

WARRANTY null & void if

- (i) Lack of maintenance, (ii) Incorrect use of the machine or tampering, (iii) Use of non-genuine spare parts, (iv) Usage of acids, solvents, or any flammable materials, (v) Non-usage of filter water / clear water / soft water & using water above 40°C temperature, (vi) While using the pressure washers to draw water which is contaminated with dust & solvents (eg. paint thinners, gasoline, oil, etc.), (vii) Repair done by unauthorized service people, (viii) Those parts subject to wear & tear due to normal operations and plastic parts, rubber items etc, (ix) Loose connections, faulty electrical fixtures & fluctuations in power supply.
- 4. Should any failure occur during or after the warranty period, customer does not have the right to interrupt payment / price discount.
- 5. Incidental or consequential damages like inconvenience commercial loss, loss of tie, mental agony etc.
- 6. Loss of any nature due to operation or non-operation is not covered under warranty.
- 7. All free service are at Dealer's service point only.
- 8. Warranty ceases if service is not done periodically.
- 9. The attached card should be completed and returned to Ratnagiri Impex Pvt. Ltd. for registration immediately after sale / delivery.
- 10. The warranty is void unless you register the warranty card with Ratnagiri Impex Pvt. Ltd.
- 11. The decision of Ratnagiri Impex Pvt. Ltd., in settling the warranty is final in all respects.
- 12. All disputes are subject to Bangalore Courts Jurisdiction

1. LIMITED WARRANTY PERIOD : For a period of six months from the date of Sale / delivery of the product which ever is earlier. 2. LIMITED WARRANTY OBLIGATION : Replacement of defective part(s) by authorized dealer are free of charges. If found defective by reasons of defective material / poor workmanship, parts will be replaced and there will be no value re-imburement. 3. TERMS & CONDITIONS : a. Claims under warranty will be accepted on submission of Warranty Card duly filled and stamped by authorized dealer together with the original purchase document. : b. Shipping / transportation / Incidental charges incurred in replacing defective parts under warranty shall be borne by the purchaser.

WARRANTY null & void if

- (i) Lack of maintenance, (ii) Incorrect use of the machine or tampering, (iii) Use of non-genuine spare parts, (iv) Usage of acids, solvents, or any flammable materials, (v) Non-usage of filter water / clear water / soft water & using water above 40°C temperature, (vi) While using the pressure washers to draw water which is contaminated with dust & solvents (eg. paint thinners, gasoline, oil, etc.), (vii) Repair done by unauthorized service people, (viii) Those parts subject to wear & tear due to normal operations and plastic parts, rubber items etc, (ix) Loose connections, faulty electrical fixtures & fluctuations in power supply.
- 4. Should any failure occur during or after the warranty period, customer does not have the right to interrupt payment / price discount.
- 5. Incidental or consequential damages like inconvenience commercial loss, loss of tie, mental agony etc.
- 6. Loss of any nature due to operation or non-operation is not covered under warranty.
- 7. All free service are at Dealer's service point only.
- 8. Warranty ceases if service is not done periodically.
- 9. The attached card should be completed and returned to Ratnagiri Impex Pvt. Ltd. for registration immediately after sale / delivery.
- 10. The warranty is void unless you register the warranty card with Ratnagiri Impex Pvt. Ltd.
- 11. The decision of Ratnagiri Impex Pvt. Ltd., in settling the warranty is final in all respects.
- 12. All disputes are subject to Bangalore Courts Jurisdiction



FREE SERVICE COUPON (30DAYS/30HRS. WHICHEVER IS EARLIER)

MODEL

SERIAL NUMBER

PDI DATE

SERVICE NO.

PURCHASE BILL NO.

DATE

DEALERS OFFICE SEAL

- 1. Check and test the fuel mixture
- 3. Check , clean and adjust the spark plug
- 5. Check and sparken the cutting tools
- 7. Start and check the noise, vibration, loosen etc..

OPERATIONS

- 2. check and clean the air filter
- 4. Check and adjust the carburetor tuning
- 6. Product familirisation on usage
- 8. Routine maintenance and shortage.

FREE SERVICE COUPON (30DAYS/30HRS. WHICHEVER IS EARLIER)

MODEL

SERIAL NUMBER

PDI DATE

SERVICE NO.

PURCHASE BILL NO.

DATE

DEALERS OFFICE SEAL

- 1. Check and test the fuel mixture
- 3. Check , clean and adjust the spark plug
- 5. Check and sparken the cutting tools
- 7. Start and check the noise, vibration, loosen etc..

OPERATIONS

- 2. check and clean the air filter
- 4. Check and adjust the carburetor tuning
- 6. Product familirisation on usage
- 8. Routine maintenance and shortage.

FREE SERVICE COUPON (30DAYS/30HRS. WHICHEVER IS EARLIER)

MODEL

SERIAL NUMBER

PDI DATE

SERVICE NO.

PURCHASE BILL NO.

DATE

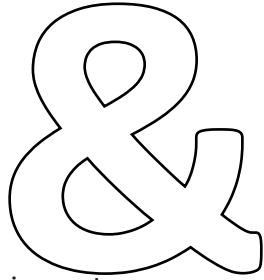
DEALERS OFFICE SEAL

- 1. Check and test the fuel mixture
- 3. Check , clean and adjust the spark plug
- 5. Check and sparken the cutting tools
- 7. Start and check the noise, vibration, loosen etc..

OPERATIONS

- 2. check and clean the air filter
- 4. Check and adjust the carburetor tuning
- 6. Product familirisation on usage
- 8. Routine maintenance and shortage.

DOS



DONT'S

attempting to use the equipments.

1. Always read the instruction manual supplied along with the equipments and understand the correct installation and operating procedures before

trousers and jackets while operating potentially dangerous machines
2. It is important to use the personal protection equipments such as head helmet with visor, ear defenders, goggles, safety gloves, cut resistant shoes,
3. Avoid untrained persons using the equipments. Children must not be allowed to handle these equipments
4. Always use genuine spares and accessories in repairs and usage to derive maximum life of the equipments.
5. Always keep the equipments in good working condition to minimize loss of output as well as to reduce the pollution and save the environment
6. Do not use the machine within range of persons unless they wear protective clothing
7. Do not operate the machine when fatigued or under the influence of alcohol or drugs
8. For more query kindly contact for our Service Center/Dealer/ franchise

NO. 1 CHOICE OF FARMERS SINCE 1999



Marketed by.
**ratnagiri
impex**
BRINGING YOU THE FUTURE... NOW

RATNAGIRI IMPEX PVT., LTD.,

Annapurna House, #1 / 1G, 7th Cross, New
Guddadahalli

Mysore Road, Bangalore - 560 026

Missed Call : 7393 938 938

Email: ask@agrimart.in