

INTERCULTIVATOR/POWER WEEDER

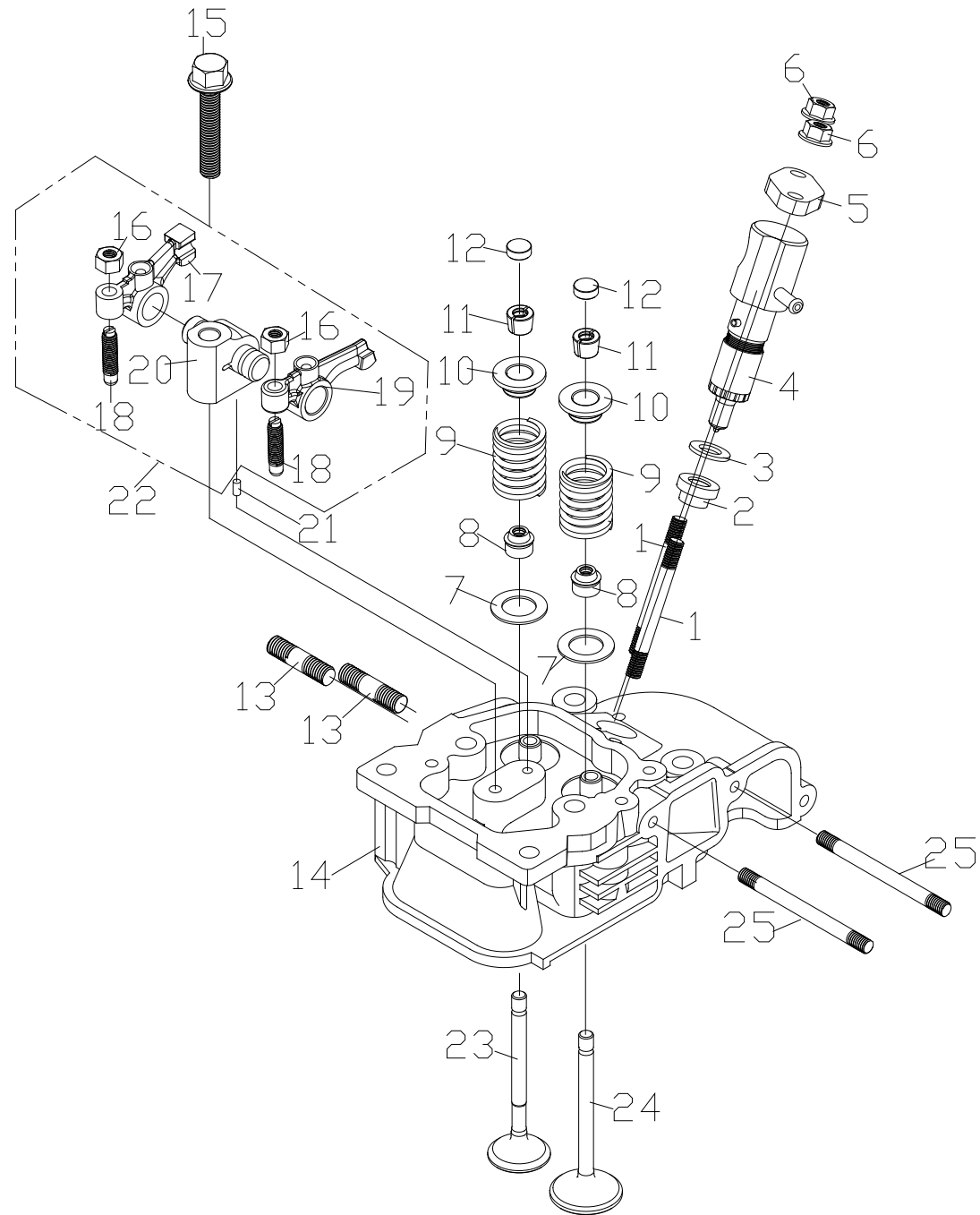
AM-5D- 173FD ENGINE PART LIST



Disclaimer : Before operating this machine please read instruction manual carefully

Engine diagram & spare parts list of AM-5D-173FD

CYLINDER HEAD ASSY - A

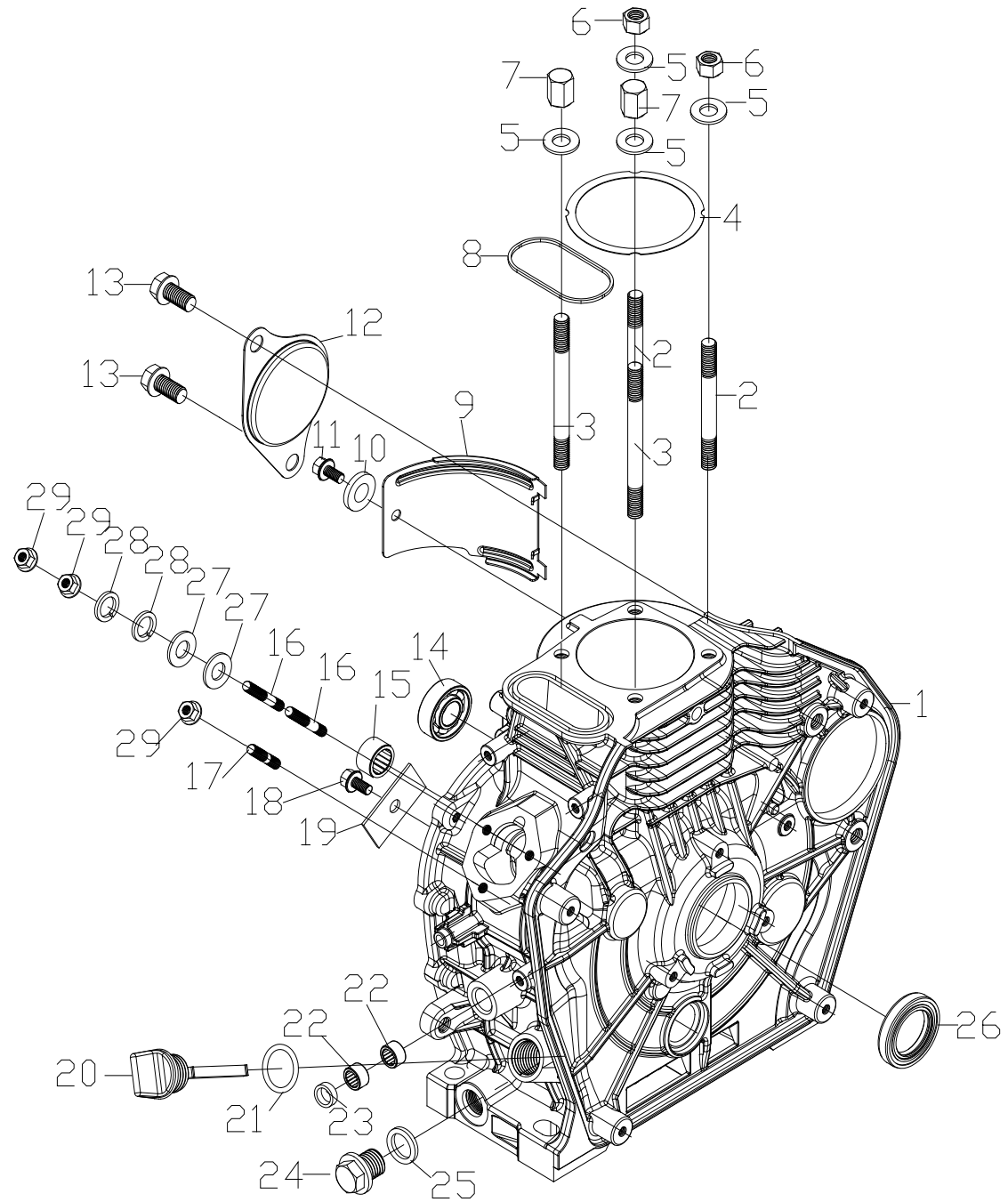


Engine diagram & spare parts list of AM-5D-173FD

SL NO	PART NO	DESCRIPTION	SL NO	PART NO	DESCRIPTION
1	AM-173FD-A01	Bolt Stud	14	AM-173FD-A14	Flange Bolt -cylinder head
2	AM-173FD-A02	Adjusting Gasket Cover	15	AM-173FD-A15	Lock Nut
3	AM-173FD-A03	Adjusting Gasket	16	AM-173FD-A16	Valve ExhaustArm
4	AM-173FD-A04	Fuel Injection Assy	17	AM-173FD-A17	Arm Base
5	AM-173FD-A05	Fuel Injection Clamp	18	AM-173FD-A18	Valve InletArm
6	AM-173FD-A06	Flange Nut	19	AM-173FD-A19	Valve Rock Arm Inlet
7	AM-173FD-A07	Valve Spring Washer	20	AM-173FD-A20	Rock Arm Seat
8	AM-173FD-A08	Valve Seal	21	AM-173FD-A21	Pin
9	AM-173FD-A09	Spring Valve	22	AM-173FD-A22	Arm Assy
10	AM-173FD-A10	Rock Arm Assy	23	AM-173FD-A23	ValveExhaust
11	AM-173FD-A11	Cotter	24	AM-173FD-A24	Valve Inlet
12	AM-173FD-A12	Valve Adjusting Plate	25	AM-173FD-A25	Bolt Stud
13	AM-173FD-A13	Bol Stud,			

Engine diagram & spare parts list of AM-5D-173FD

CRANKCASE ASSY - B



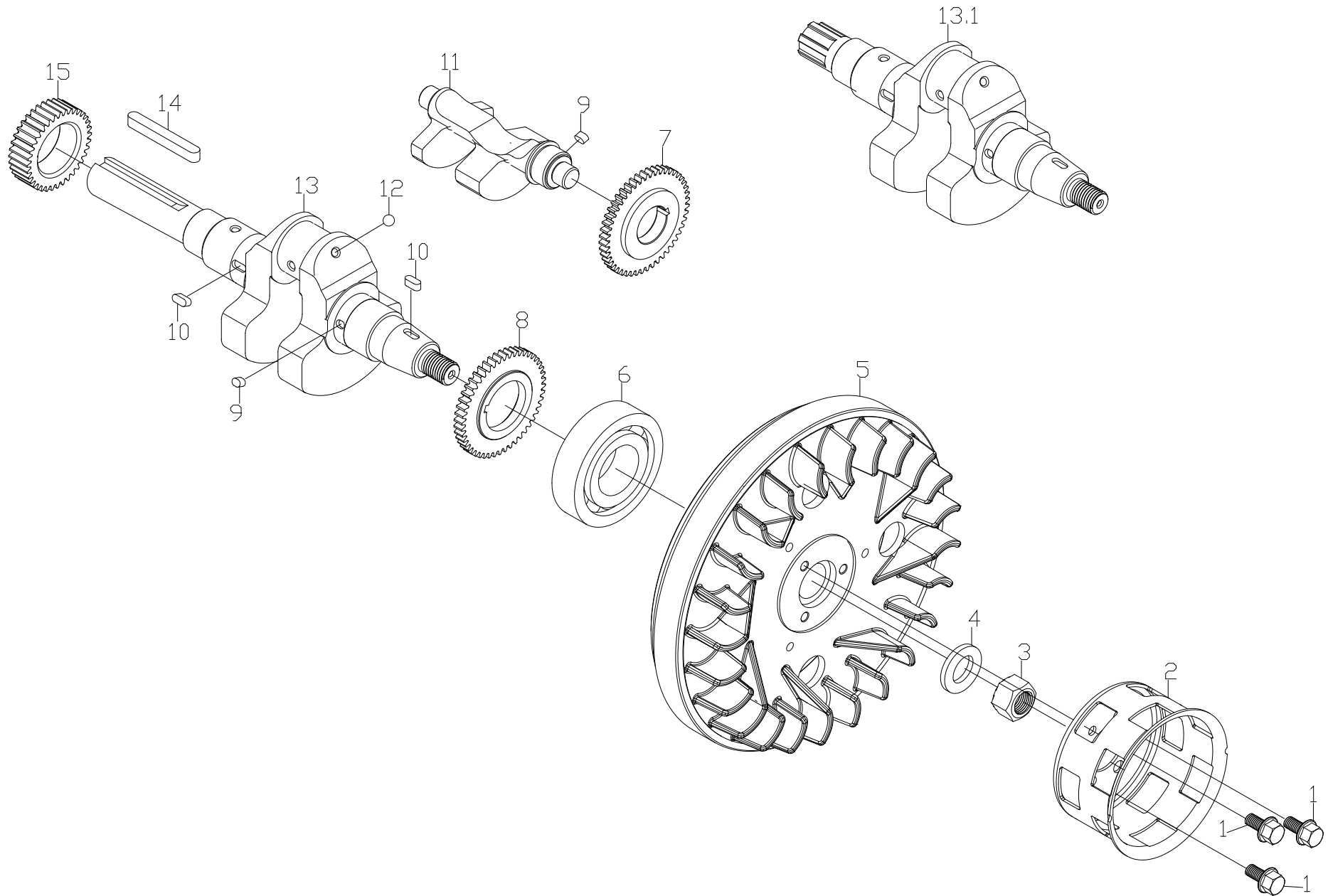
Engine diagram & spare parts list of AM-5D-173FD

SL NO	PART NO	DESCRIPTION	SL NO	PART NO	DESCRIPTION
1	AM-173FD-B01	Crankcase Complete	16	AM-173FD-B16	Bolt Stud
2	AM-173FD-B02	Cylinder Head Stud	17	AM-173FD-B17	Bolt Stud
3	AM-173FD-B03	Cylinder Head Stud	18	AM-173FD-B18	Bolt
4	AM-173FD-B04	Cylinder Head Shim	19	AM-173FD-B19	Retainer
5	AM-173FD-B05	Washer	20	AM-173FD-B20	Oil Filler Gap
6	AM-173FD-B06	Cylinder Head Nut	21	AM-173FD-B21	O-Ring
7	AM-173FD-B07	Cylinder Head Nut(Thick)	22	AM-173FD-B22	Needle Bearing
8	AM-173FD-B08	Rectangle Seal Ring	23	AM-173FD-B23	Oil Seal
9	AM-173FD-B09	Wind Guide Plate	24	AM-173FD-B24	Drain Plug
10	AM-173FD-B10	Washer	25	AM-173FD-B25	Oil Plug Seal
11	AM-173FD-B11	Flange Bolt	26	AM-173FD-B26	Oil Seal
12	AM-173FD-B12	Starter Seat Cover	27	AM-173FD-B27	Washer
13	AM-173FD-B13	Flange Bolt	28	AM-173FD-B28	Spring Washer
14	AM-173FD-B14	Ball Bearing	29	AM-173FD-B29	Flange Bolt
15	AM-173FD-B15	Needle Bearing			

Engine diagram & spare parts list of AM-5D-173FD

SL NO	PART NO	DESCRIPTION	SL NO	PART NO	DESCRIPTION
1	AM-173FD-C01	Gasket Case Cover	11	AM-173FD-C11	Flange Bolt
2	AM-173FD-C02	Pin	11.1	AM-173FD-C11.1	Flange Bolt
3	AM-173FD-C03	Bearing	12	AM-173FD-C12	Flange Bolt
4	AM-173FD-C04	Main Bearing	13	AM-173FD-C13	Oil Pump Cover
5	AM-173FD-C05	Ball Bearing	14	AM-173FD-C14	Oil Pump Assy
6	AM-173FD-C06	Oil Indicator	15	AM-173FD-C15	Sealing Ring
7	AM-173FD-C07	Governor Kit Comp	16	AM-173FD-C16	Block Bolt
8	AM-173FD-C08	Dipstick	17	AM-173FD-C17	Flange Bolt
9	AM-173FD-C09	O-Ring	18	AM-173FD-C18	Engine Oil Filter Element
10	AM-173FD-C10	Oil Seal	19	AM-173FD-C19	Seal Ring
			20	AM-173FD-C20	Cover Crankcase

CRANK FLY WHEEL ASSY- D

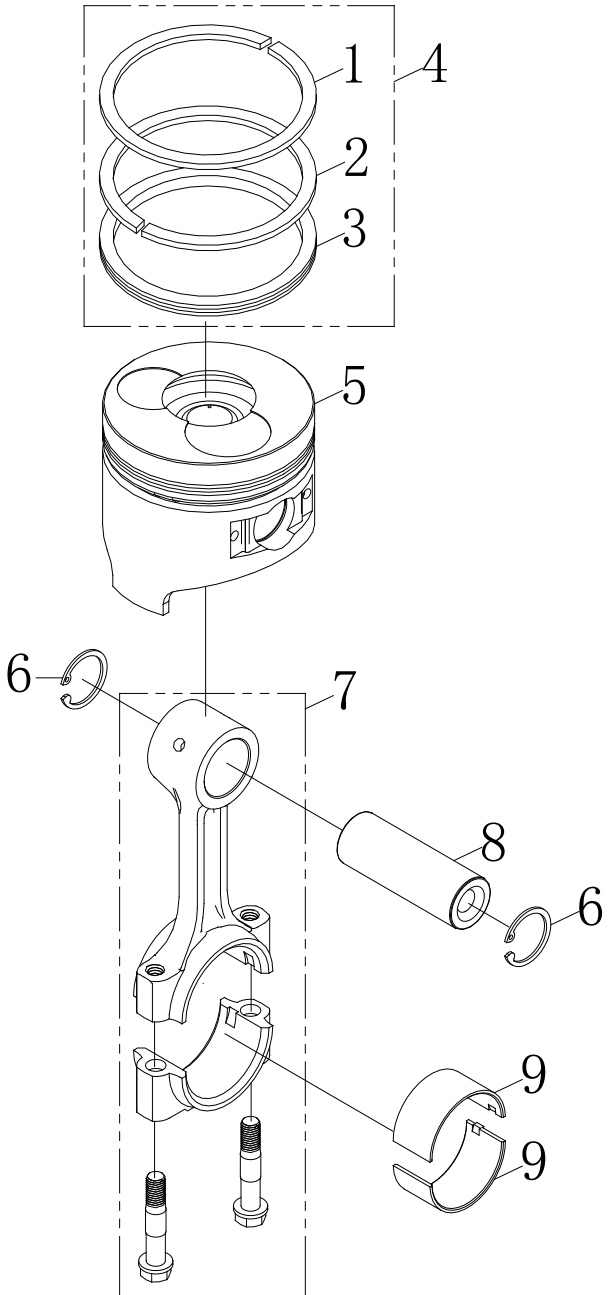


Engine diagram & spare parts list of AM-5D-173FD

SL NO	PART NO	DESCRIPTION	SL NO	PART NO	DESCRIPTION
1	AM-173FD-D01	Flange Bolt			
2	AM-173FD-D02	Starter Pulley			
3	AM-173FD-D03	Flange Nut			
4	AM-173FD-D04	Washer			
5	AM-173FD-D05	Fly Wheel			
6	AM-173FD-D06	Ball Bearing			
7	AM-173FD-D07	Timing Gear Of Balance Shaft			
8	AM-173FD-D08	Drive Gear Of Balance Shsft			
9	AM-173FD-D09	Key			
10	AM-173FD-D10	Key			
11	AM-173FD-D11	Balancer Shaft			
12	AM-173FD-D12	Steel Ball			
13	AM-173FD-D13	Crank Shaft Assy - NA			
13.1	AM-173FD-D13.1	Crank Shaft Assy			
14	AM-173FD-D14	Key			
15	AM-173FD-D15	Crankshaft Timing Gear			

Engine diagram & spare parts list of AM-5D-173FD

PISTON-CONNECTING ROD ASSY - E

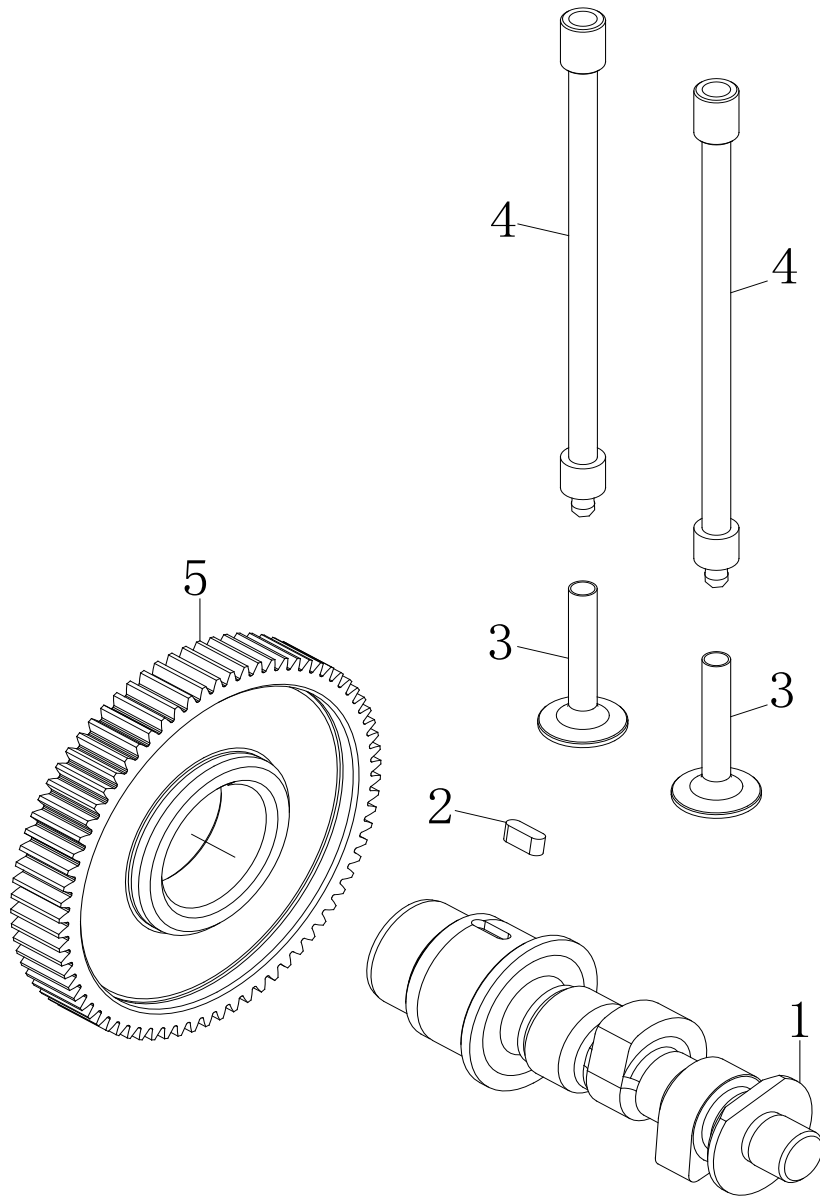


Engine diagram & spare parts list of AM-5D-173FD

SL NO	PART NO	DESCRIPTION	SL NO	PART NO	DESCRIPTION
1	AM-173FD-E01	Gas Ring 1			
2	AM-173FD-E02	Gas Ring 2			
3	AM-173FD-E03	Oil Ring			
4	AM-173FD-E04	Piston Ring Assy			
5	AM-173FD-E05	Piston			
6	AM-173FD-E06	Clip Piston Pin			
7	AM-173FD-E07	Connecting Rod Assy			
8	AM-173FD-E08	Pin Piston			
9	AM-173FD-E09	Crank Pin Bearing			

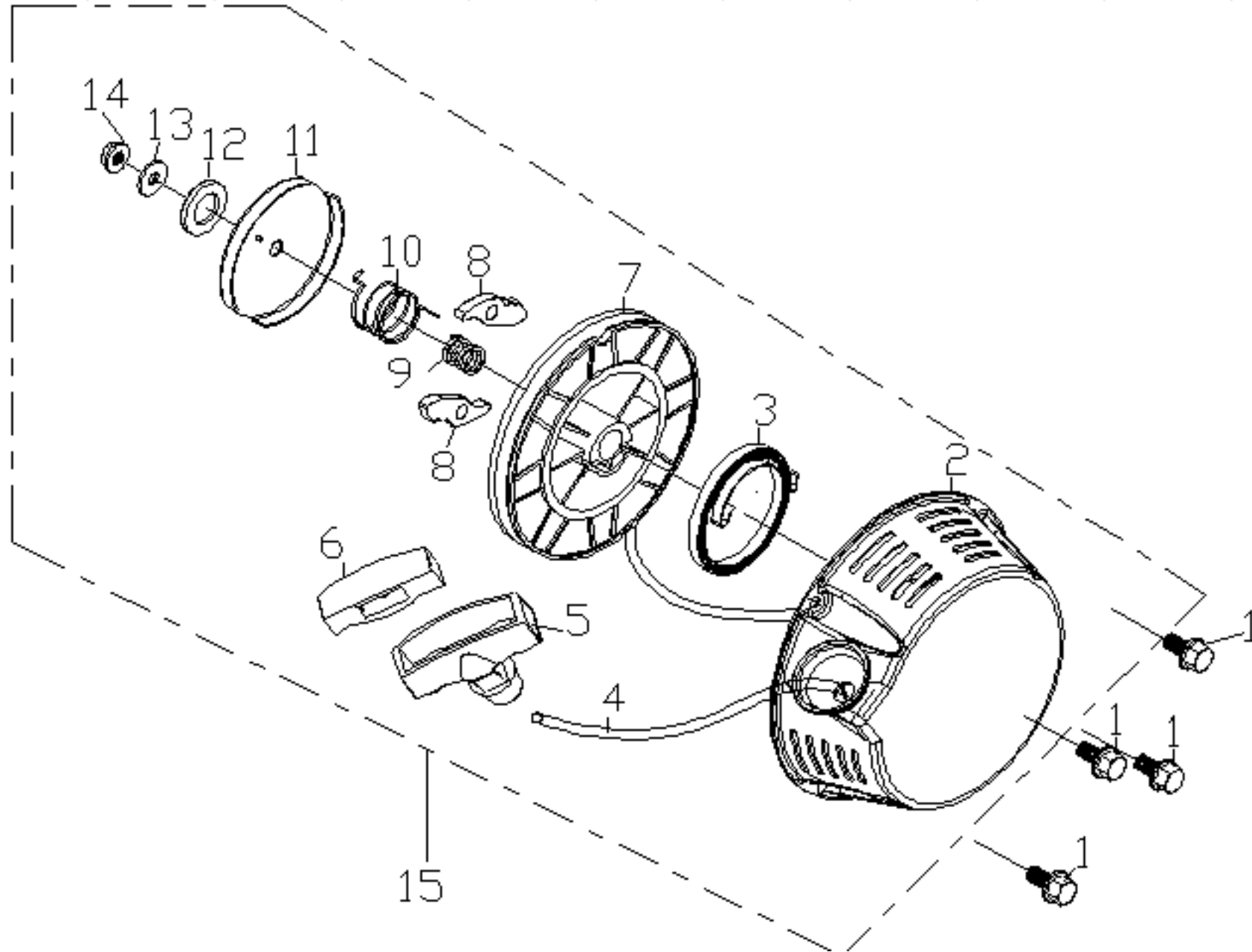
Engine diagram & spareparts list of AM-5D-173FD

CAMSHAFT ASSY- F



SL NO	PART NO	DESCRIPTION
1	AM-173FD-F01	Camshaft
2	AM-173FD-F02	Key
3	AM-173FD-F03	Lifter,Valve
4	AM-173FD-F04	Rod Push
5	AM-173FD-F05	Camshaft Timing Gear

START COVER ASSY -G

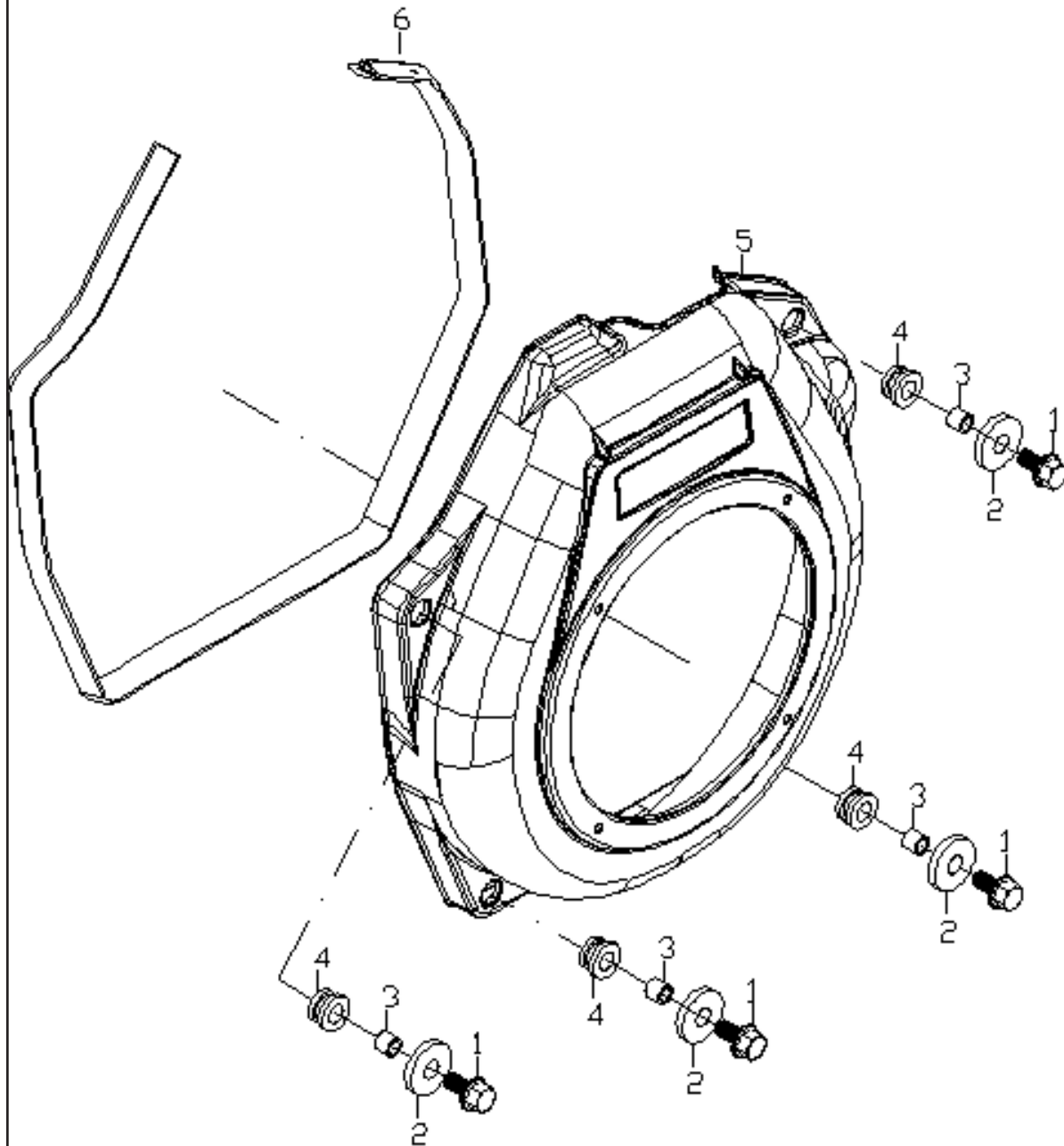


Engine diagram & spare parts list of AM-5D-173FD

SL NO	PART NO	DESCRIPTION	SL NO	PART NO	DESCRIPTION
1	AM-173FD-G01	Flange Bolt			
2	AM-173FD-G02	Stater Cover Comp Recoil			
3	AM-173FD-G03	Spiral Spring			
4	AM-173FD-G04	Rope Recoil Starter			
5	AM-173FD-G05	Handle Starter			
6	AM-173FD-G06	Cover Handle Starter			
7	AM-173FD-G07	Starter Reel			
8	AM-173FD-G08	Patchet Starter			
9	AM-173FD-G09	Compress Spring			
10	AM-173FD-G10	Spring Return			
11	AM-173FD-G11	Spring Cover			
12	AM-173FD-G12	Rubber Washer			
13	AM-173FD-G13	Washer			
14	AM-173FD-G14	Nut			
15	AM-173FD-G15	Starter COVER ASSY			

Engine diagram & spare parts list of AM-5D-173FD

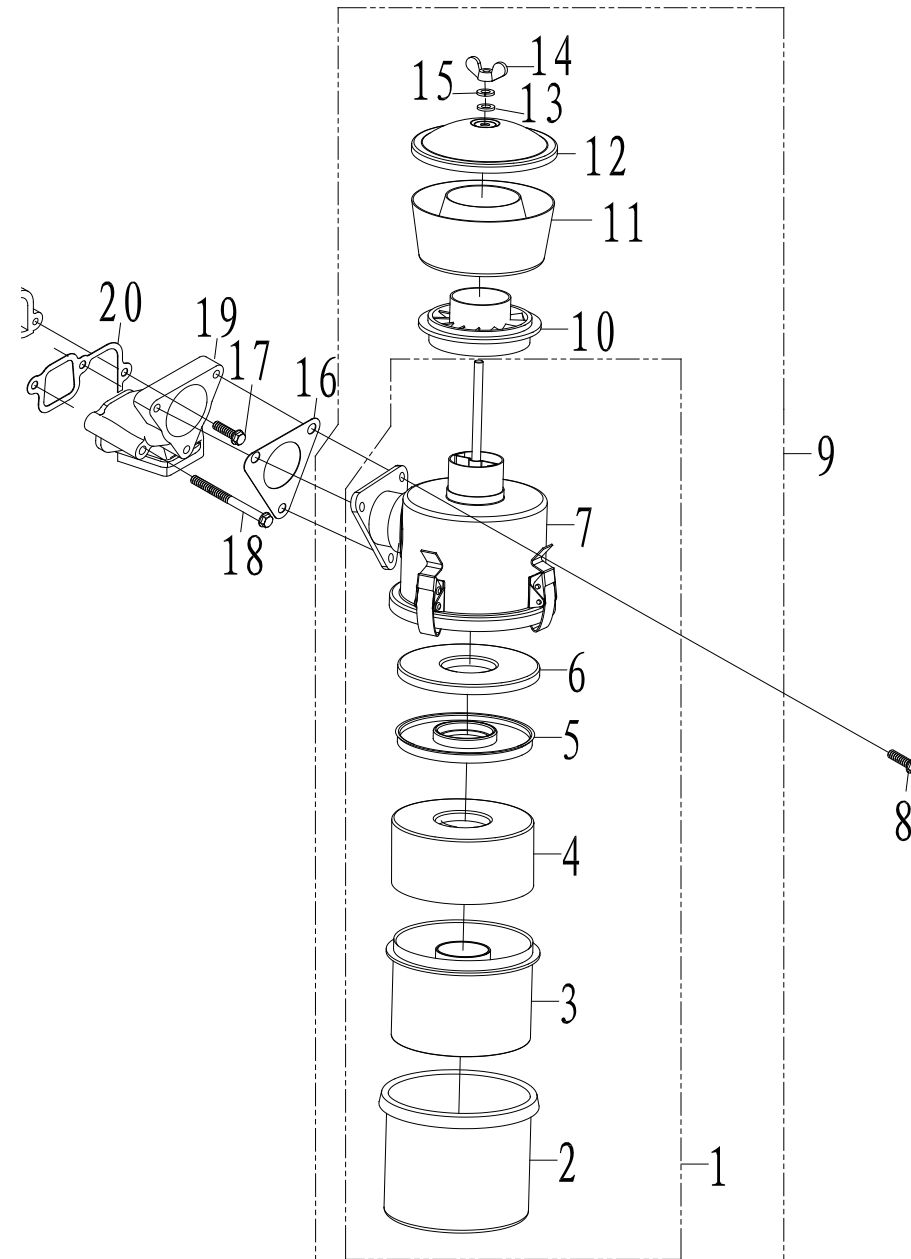
WIND SCOOPER ASSY- H



SL NO	PART NO	DESCRIPTION
1	AM-173FD-H01	Bolt
2	AM-173FD-H02	Washer
3	AM-173FD-H03	Collar
4	AM-173FD-H04	Shock Absorber
5	AM-173FD-H05	Wind Scooper Assy
6	AM-173FD-H06	Shock Absorber Seat

Engine diagram & spare parts list of AM-5D-173FD

AIR FILTER ASSY - J

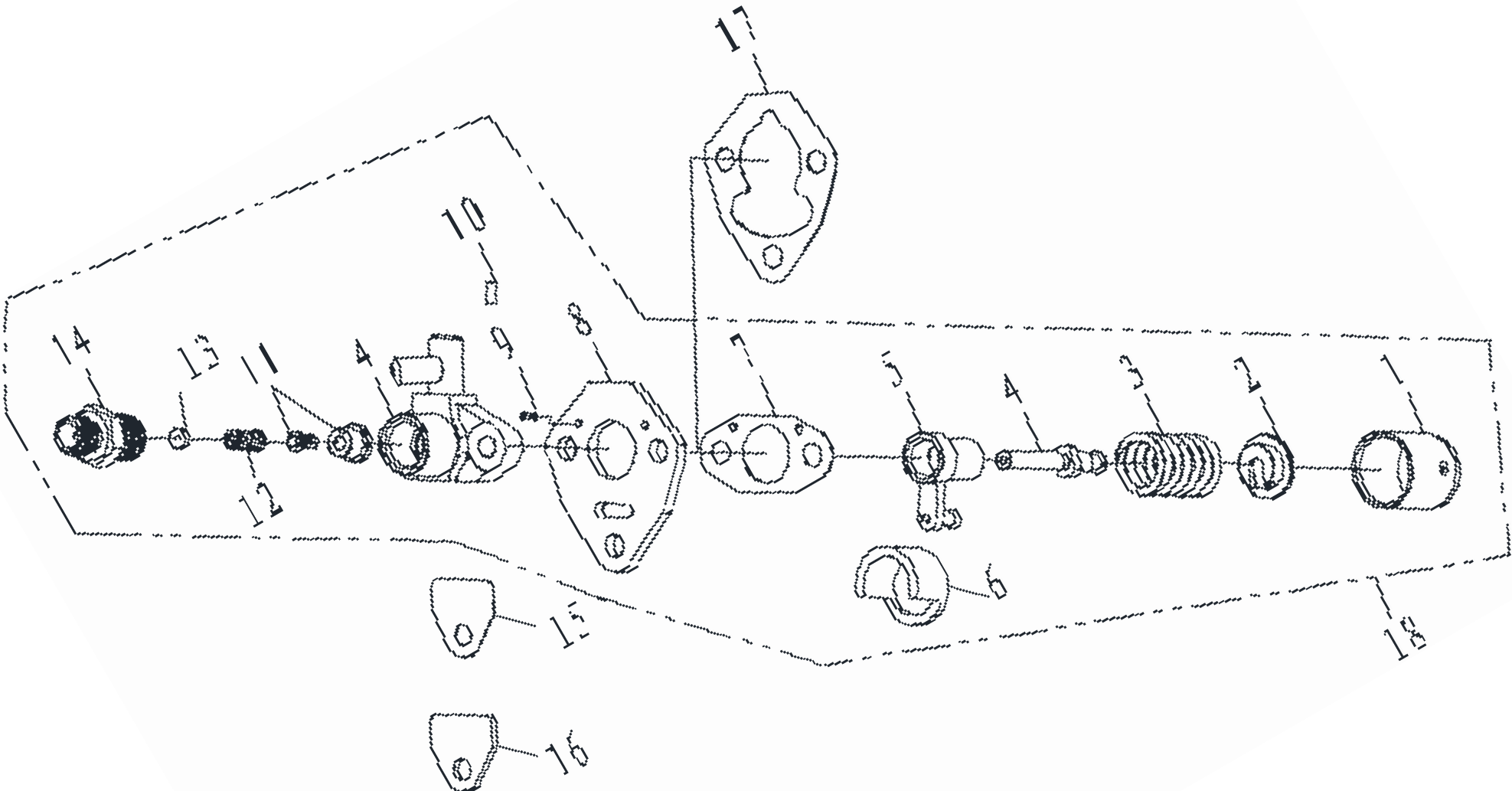


Engine diagram & spare parts list of AM-5D-173FD

SL NO	PART NO	DESCRIPTION	SL NO	PART NO	DESCRIPTION
1	AM-173FD-J01	Cyclone Air Cleaner	11	AM-173FD-J11	Air Cleaner Detached Body
2	AM-173FD-J02	Air Flter Sump	12	AM-173FD-J12	Cyclone,Filter Cover
3	AM-173FD-J03	Filter Case	13	AM-173FD-J13	Spring Washer
4	AM-173FD-J04	Steel Wire Filter	14	AM-173FD-J14	Washer
5	AM-173FD-J05	Filter Case,Cover	15	AM-173FD-J15	Butterfly Nut
6	AM-173FD-J06	Foam Filter	16	AM-173FD-J16	Air Cleaner Gasket
7	AM-173FD-J07	Air Filter Connecting Disc	17	AM-173FD-J17	Flange Bolt
8	AM-173FD-J08	Flange Bolt	18	AM-173FD-J18	Flange Nut
9	AM-173FD-J09	Air Cleaner Assy	19	AM-173FD-J19	Intake Pipe
10	AM-173FD-J10	Air Cleaner Blade Base	20	AM-173FD-J20	Intake Pipe Gasket

Engine diagram & spare parts list of AM-5D-173FD

FUEL PUMP ASSY -K

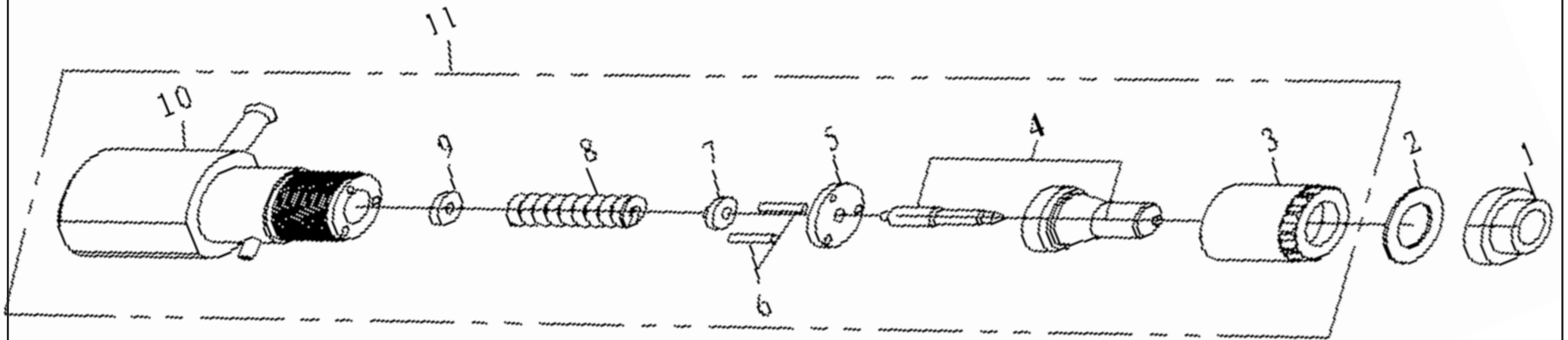


Engine diagram & spare parts list of AM-5D-173FD

SL NO	PART NO	DESCRIPTION	SL NO	PART NO	DESCRIPTION
1	AM-173FD-K01	Tappet			
2	AM-173FD-K02	Spring Holder			
3	AM-173FD-K03	Spring			
4	AM-173FD-K04	Plunger- NOZZEL			
5	AM-173FD-K05	Fuel Limiting Sheath Weld- mentl Assy			
6	AM-173FD-K06	Support			
7	AM-173FD-K07	Fuel Pump Gasket			
8	AM-173FD-K08	Washer			
9	AM-173FD-K09	Fip Connecting Plate			
10	AM-173FD-K10	Pin			
11	AM-173FD-K11	Fip Block			
12	AM-173FD-K12	Fuel Delivery Valve Core			
13	AM-173FD-K13	Fuel Delivery Valve Seat			
14	AM-173FD-K14	Fuel Delivery Valve Spring			
15	AM-173FD-K15	Fuel Delhrery Washer			
16	AM-173FD-K16	Fuel Delvery Valve Forcing Holder			
17	AM-173FD-K17	Fuel Pump Gasket			
18	AM-173FD-K18	Fuel Pump ASSY			

Engine diagram & spare parts list of AM-5D-173FD

FUEL INJECTION ASSY- L

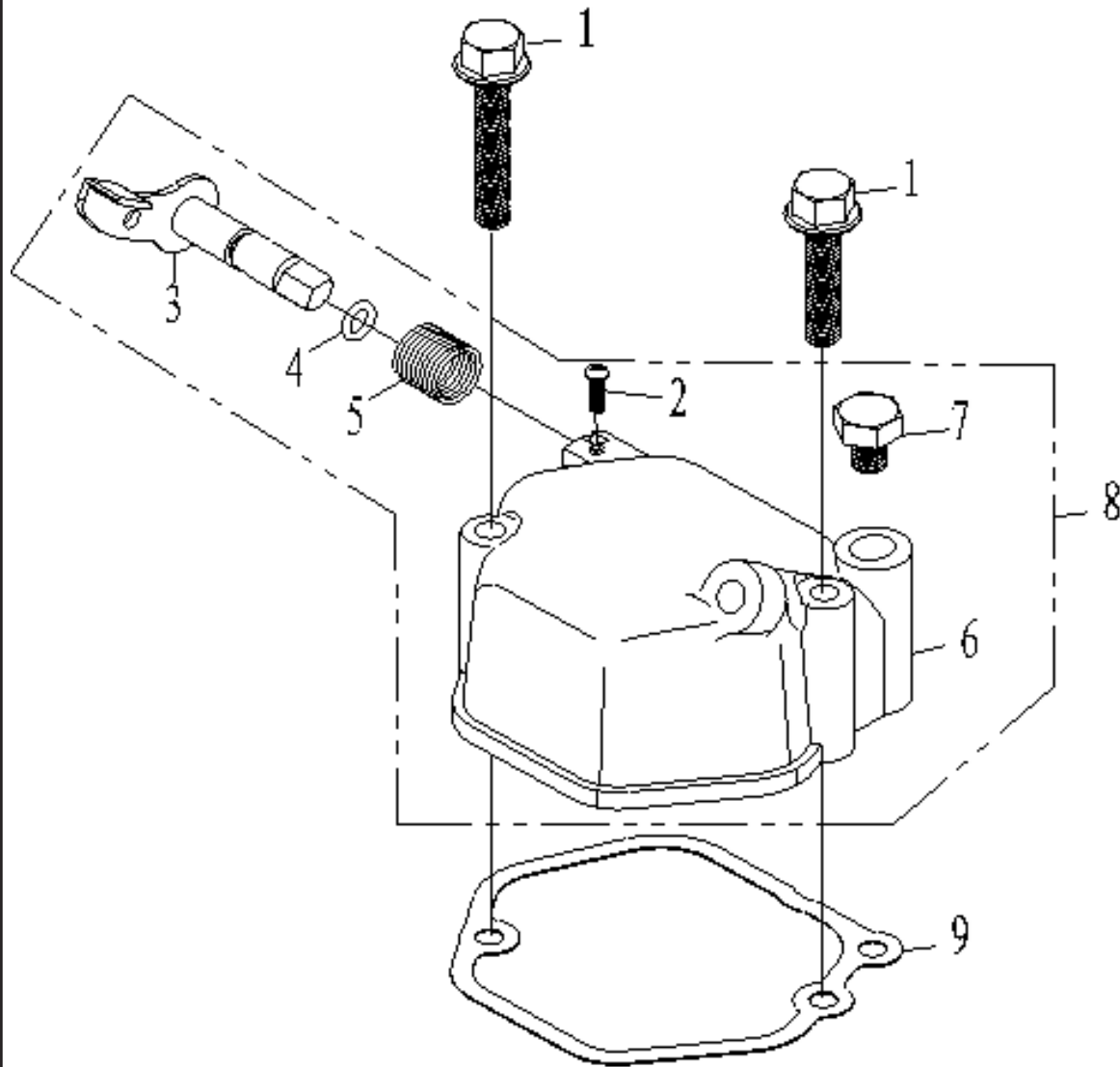


Engine diagram & spare parts list of AM-5D-173FD

SL NO	PART NO	DESCRIPTION	SL NO	PART NO	DESCRIPTION
1	AM-173FD-L01	Adjusting Gasket Cover			
2	AM-173FD-L02	Adjusting Gasket			
3	AM-173FD-L03	Injection Nozzle Nut			
4	AM-173FD-L04	Injection Matching Parts			
5	AM-173FD-L05	Intermediate Block			
6	AM-173FD-L06	Locating Pin			
7	AM-173FD-L07	Mandril			
8	AM-173FD-L08	Volt-Adjustment Spring			
9	AM-173FD-L09	Washer			
10	AM-173FD-L10	Fuel Iniection Vaive Block			
11	AM-173FD-L11	Fuel Injector Assy			

Engine diagram & spare parts list of AM-5D-173FD

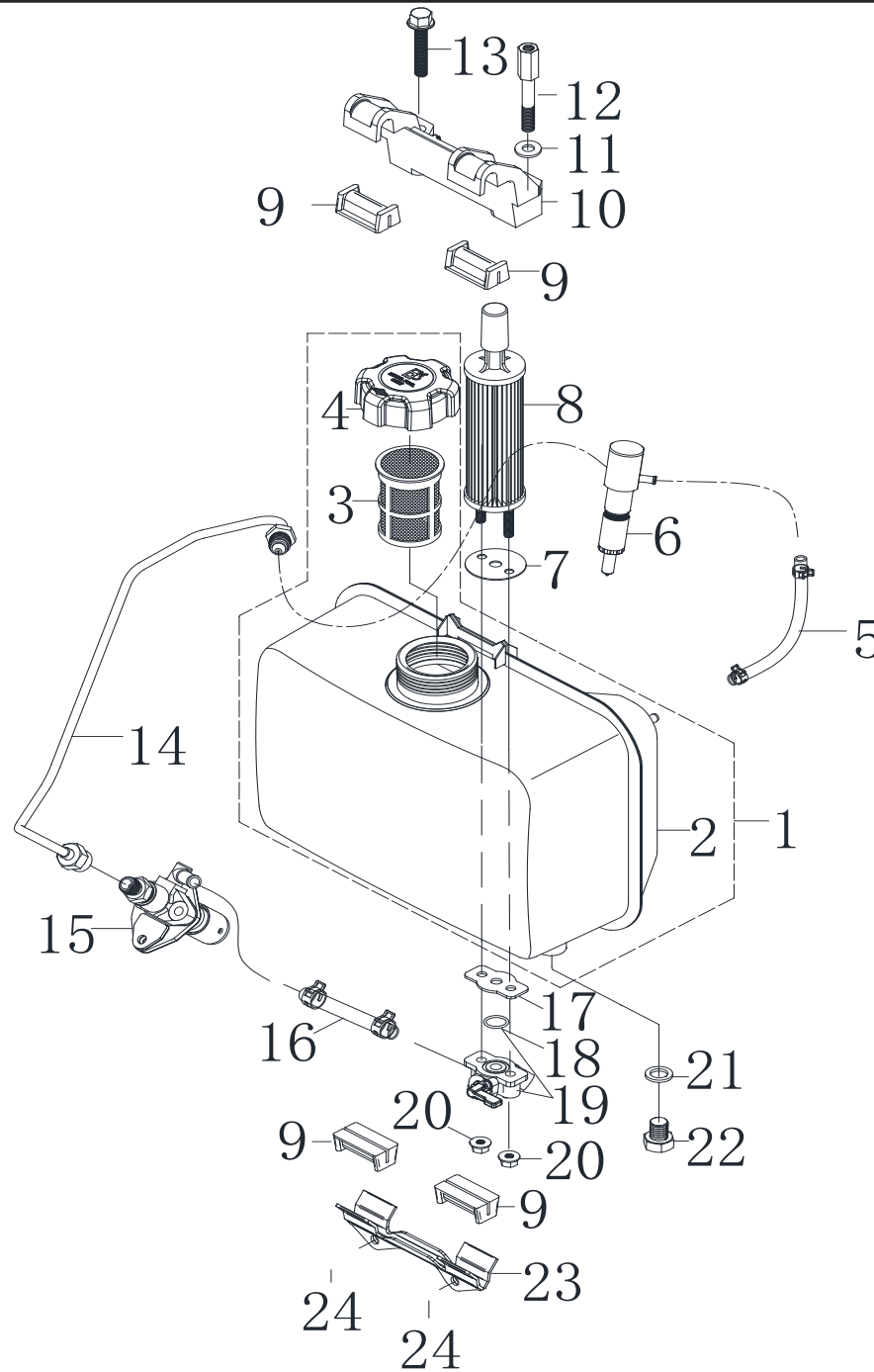
BONNET ASSY- M



SL NO	PART NO	DESCRIPTION
1	AM-173FD-M01	Flange Bolt
2	AM-173FD-M02	Roller Install Bolt
3	AM-173FD-M03	Decompress Roller
4	AM-173FD-M04	O-ring, Decompress Shaft
5	AM-173FD-M05	Decompress Spring
6	AM-173FD-M06	Bonnet
7	AM-173FD-M07	Bolt
8	AM-173FD-M08	Bonnet Assy
9	AM-173FD-M09	Bonner Gasket

Engine diagram & spare parts list of AM-5D-173FD

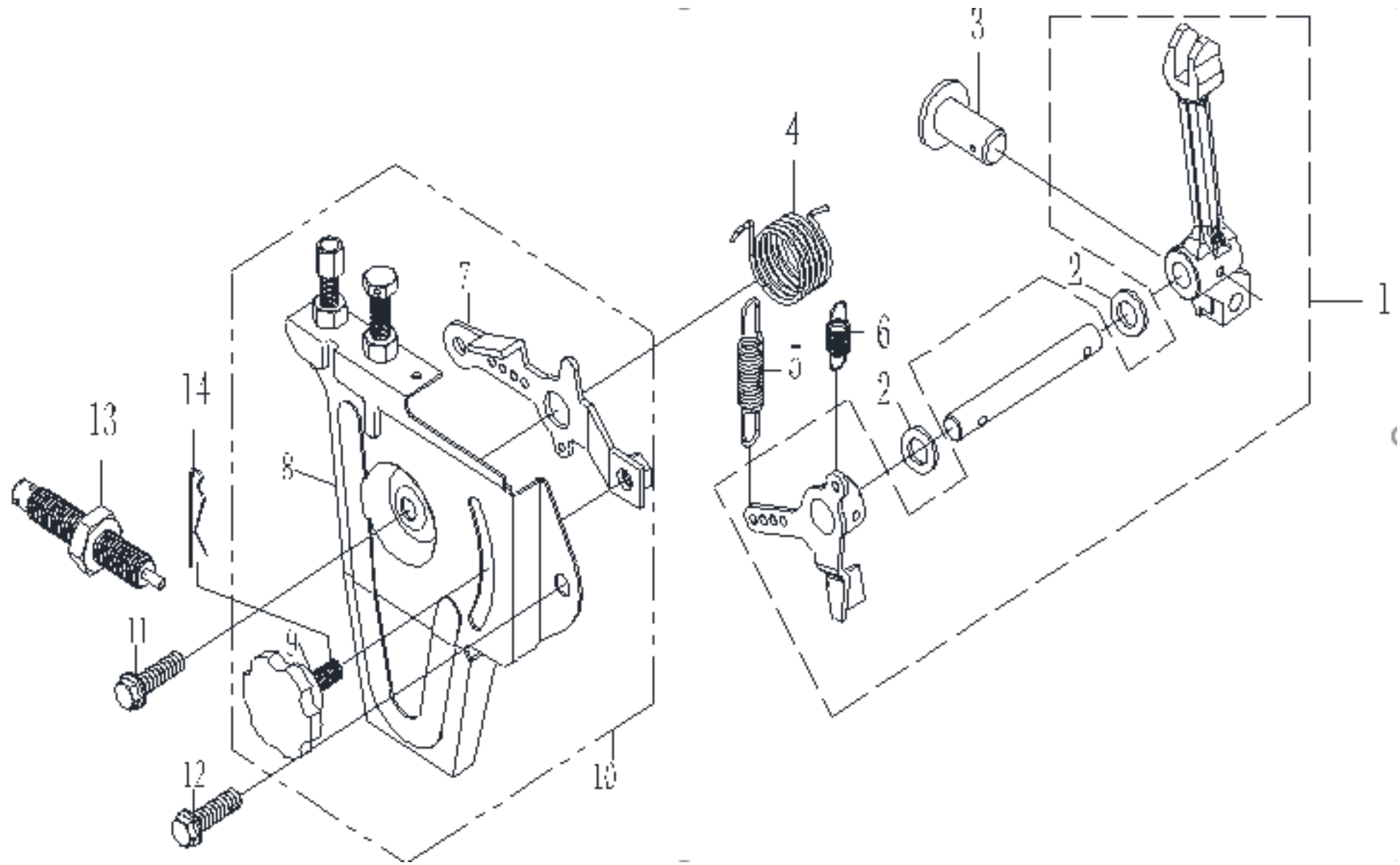
FULE OIL ASSY- N



Engine diagram & spare parts list of AM-5D-173FD

SL NO	PART NO	DESCRIPTION	SL NO	PART NO	DESCRIPTION
1	AM-173FD-N01	Fuel Tank Assy	13	AM-173FD-N13	Washer
2	AM-173FD-N02	Fuel Tank	14	AM-173FD-N14	Upper Stay Bolt
3	AM-173FD-N03	Fuel Filter	15	AM-173FD-N15	bolt - fuel pump
4	AM-173FD-N04	Fuel Tank Cap	16	AM-173FD-N16	Fuel Injection Pipe Assy
5	AM-173FD-N05	Fuel Return Pipe	17	AM-173FD-N17	Oil Pump Assy
6	AM-173FD-N06	Oil Return Pipe	18	AM-173FD-N18	Oil Pipe
7	AM-173FD-N07	Oil Return Pipe Clip	19	AM-173FD-N19	Fuel Pipe
8	AM-173FD-N08	Fuel Iniection Assy	20	AM-173FD-N20	Fuel Pipe Clip
9	AM-173FD-N09	Fuel Filter Gasket	21	AM-173FD-N21	Fuel Switch Gasket
10	AM-173FD-N10	Fuel Filter Assy	22	AM-173FD-N22	O-Ring
11	AM-173FD-N11	Fuel Tank Damper	23	AM-173FD-N23	Fuel Tank Gock Assy
12	AM-173FD-N12	Upper Stay	24	AM-173FD-N24	Flange Nut

THROTTLE CONTROL ASSY - P

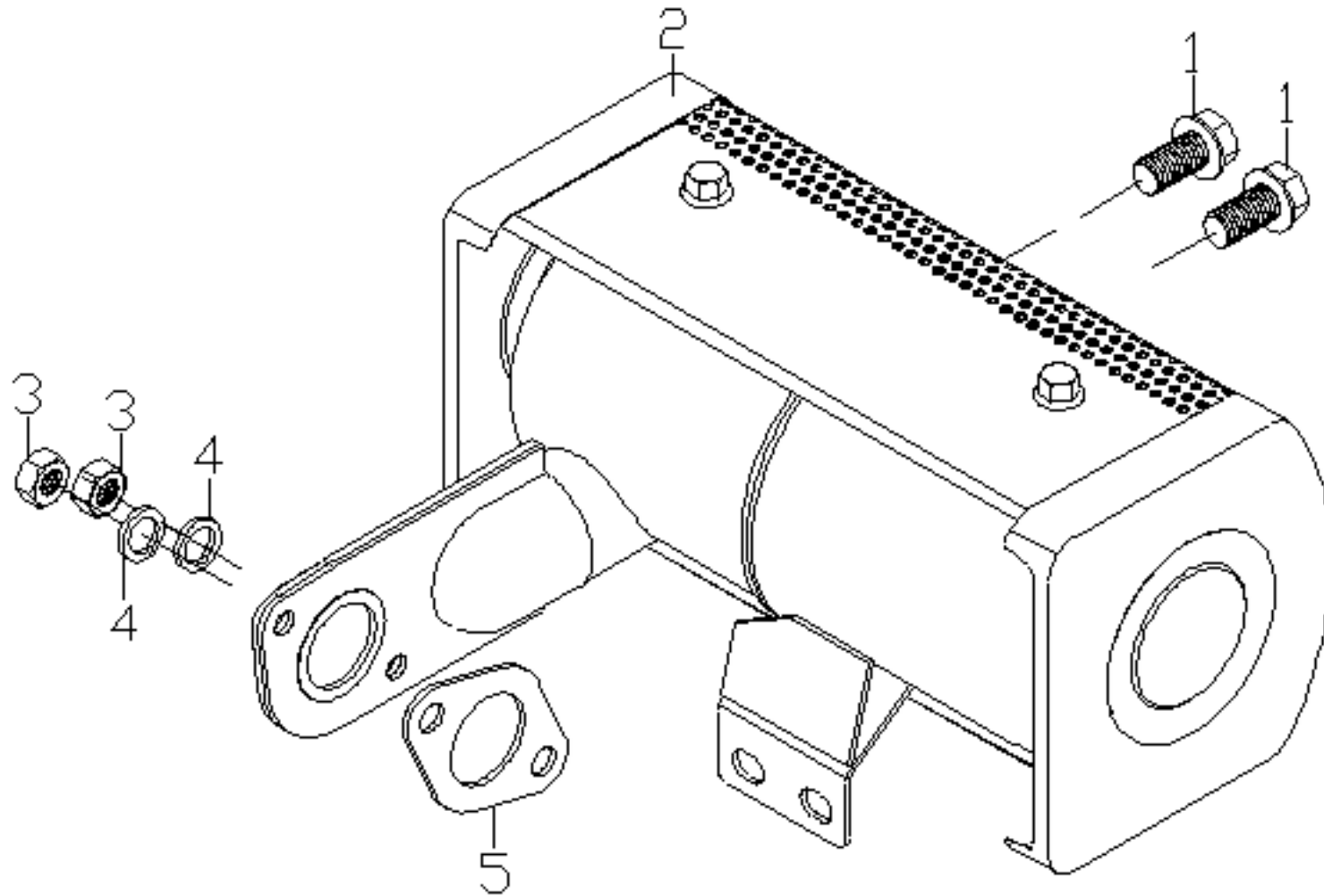


Engine diagram & spare parts list of AM-5D-173FD

SL NO	PART NO	DESCRIPTION	SL NO	PART NO	DESCRIPTION
1	AM-173FD-P01	Lever Fork			
2	AM-173FD-P02	Adjusting washer			
3	AM-173FD-P03	Speed control cap			
4	AM-173FD-P04	Reset Spring			
5	AM-173FD-P05	Governor Spring			
6	AM-173FD-P06	Fine Tuning Spring			
7	AM-173FD-P07	Speed control arm			
8	AM-173FD-P08	Speed control panel			
9	AM-173FD-P09	Control Panel			
10	AM-173FD-P10	Control Panel			
11	AM-173FD-P11	Flange Bolt			
12	AM-173FD-P12	Flange Bolt			
13	AM-173FD-P13	Control Lever Assy			
14	AM-173FD-P14	Adjusting Rod Clip			






Engine diagram & spare parts list of AM-5D-173FD

EXHAUST ASSY - Q



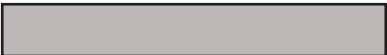




WARRANTY CARD

CUSTOMER COPY

DATE _____	DATE OF DELIVERY _____	DEALERS OFFICIAL SEAL	DEALERS SIGN _____
PURCHASERS NAME & ADDRESS _____ _____	 CUSTOMER SIGN		
PRODUCT NAME	PRODUCT SERIAL NO.	INVOICE/DN NO.	
			






I/Will accept the terms and conditions of warranty as in the warranty card

DEALERS COPY

DATE _____	DATE OF DELIVERY _____	DEALERS OFFICIAL SEAL	DEALERS SIGN _____
PURCHASERS NAME & ADDRESS _____ _____	 CUSTOMER SIGN		
PRODUCT NAME	PRODUCT SERIAL NO.	INVOICE/DN NO.	
			

I/Will accept the terms and conditions of warranty as in the warranty card

COMPANY COPY

DATE _____	DATE OF DELIVERY _____	DEALERS OFFICIAL SEAL	DEALERS SIGN _____
PURCHASERS NAME & ADDRESS _____ _____	 CUSTOMER SIGN		
PRODUCT NAME	PRODUCT SERIAL NO.	INVOICE/DN NO.	
			

I/Will accept the terms and conditions of warranty as in the warranty card

1. LIMITED WARRANTY PERIOD : For a period of six months from the date of Sale / delivery of the product which ever is earlier. 2. LIMITED WARRANTY OBLIGATION : Replacement of defective part(s) by authorized dealer are free of charges. If found defective by reasons of defective material / poor workmanship, parts will be replaced and there will be no value re-imburement. 3. TERMS & CONDITIONS : a. Claims under warranty will be accepted on submission of Warranty Card duly filled and stamped by authorized dealer together with the original purchase document. : b. Shipping / transportation / Incidental charges incurred in replacing defective parts under warranty shall be borne by the purchaser

WARRANTY null & void if

- (i) Lack of maintenance, (ii) Incorrect use of the machine or tampering, (iii) Use of non-genuine spare parts, (iv) Usage of acids, solvents, or any flammable materials, (v) Non-usage of filter water / clear water / soft water & using water above 40°C temperature, (vi) While using the pressure washers to draw water which is contaminated with dust & solvents (eg. paint thinners, gasoline, oil, etc.), (vii) Repair done by unauthorized service people, (viii) Those parts subject to wear & tear due to normal operations and plastic parts, rubber items etc, (ix) Loose connections, faulty electrical fixtures & fluctuations in power supply.
- 4. Should any failure occur during or after the warranty period, customer does not have the right to interrupt payment / price discount.
- 5. Incidental or consequential damages like inconvenience commercial loss, loss of tie, mental agony etc.
- 6. Loss of any nature due to operation or non-operation is not covered under warranty.
- 7. All free service are at Dealer's service point only.
- 8. Warranty ceases if service is not done periodically.
- 9. The attached card should be completed and returned to Ratnagiri Impex Pvt. Ltd. for registration immediately after sale / delivery.
- 10. The warranty is void unless you register the warranty card with Ratnagiri Impex Pvt. Ltd.
- 11. The decision of Ratnagiri Impex Pvt. Ltd., in settling the warranty is final in all respects.
- 12. All disputes are subject to Bangalore Courts Jurisdiction

1. LIMITED WARRANTY PERIOD : For a period of six months from the date of Sale / delivery of the product which ever is earlier. 2. LIMITED WARRANTY OBLIGATION : Replacement of defective part(s) by authorized dealer are free of charges. If found defective by reasons of defective material / poor workmanship, parts will be replaced and there will be no value re-imburement. 3. TERMS & CONDITIONS : a. Claims under warranty will be accepted on submission of Warranty Card duly filled and stamped by authorized dealer together with the original purchase document. : b. Shipping / transportation / Incidental charges incurred in replacing defective parts under warranty shall be borne by the purchaser.

WARRANTY null & void if

- (i) Lack of maintenance, (ii) Incorrect use of the machine or tampering, (iii) Use of non-genuine spare parts, (iv) Usage of acids, solvents, or any flammable materials, (v) Non-usage of filter water / clear water / soft water & using water above 40°C temperature, (vi) While using the pressure washers to draw water which is contaminated with dust & solvents (eg. paint thinners, gasoline, oil, etc.), (vii) Repair done by unauthorized service people, (viii) Those parts subject to wear & tear due to normal operations and plastic parts, rubber items etc, (ix) Loose connections, faulty electrical fixtures & fluctuations in power supply.
- 4. Should any failure occur during or after the warranty period, customer does not have the right to interrupt payment / price discount.
- 5. Incidental or consequential damages like inconvenience commercial loss, loss of tie, mental agony etc.
- 6. Loss of any nature due to operation or non-operation is not covered under warranty.
- 7. All free service are at Dealer's service point only.
- 8. Warranty ceases if service is not done periodically.
- 9. The attached card should be completed and returned to Ratnagiri Impex Pvt. Ltd. for registration immediately after sale / delivery.
- 10. The warranty is void unless you register the warranty card with Ratnagiri Impex Pvt. Ltd.
- 11. The decision of Ratnagiri Impex Pvt. Ltd., in settling the warranty is final in all respects.
- 12. All disputes are subject to Bangalore Courts Jurisdiction

1. LIMITED WARRANTY PERIOD : For a period of six months from the date of Sale / delivery of the product which ever is earlier. 2. LIMITED WARRANTY OBLIGATION : Replacement of defective part(s) by authorized dealer are free of charges. If found defective by reasons of defective material / poor workmanship, parts will be replaced and there will be no value re-imburement. 3. TERMS & CONDITIONS : a. Claims under warranty will be accepted on submission of Warranty Card duly filled and stamped by authorized dealer together with the original purchase document. : b. Shipping / transportation / Incidental charges incurred in replacing defective parts under warranty shall be borne by the purchaser.

WARRANTY null & void if

- (i) Lack of maintenance, (ii) Incorrect use of the machine or tampering, (iii) Use of non-genuine spare parts, (iv) Usage of acids, solvents, or any flammable materials, (v) Non-usage of filter water / clear water / soft water & using water above 40°C temperature, (vi) While using the pressure washers to draw water which is contaminated with dust & solvents (eg. paint thinners, gasoline, oil, etc.), (vii) Repair done by unauthorized service people, (viii) Those parts subject to wear & tear due to normal operations and plastic parts, rubber items etc, (ix) Loose connections, faulty electrical fixtures & fluctuations in power supply.
- 4. Should any failure occur during or after the warranty period, customer does not have the right to interrupt payment / price discount.
- 5. Incidental or consequential damages like inconvenience commercial loss, loss of tie, mental agony etc.
- 6. Loss of any nature due to operation or non-operation is not covered under warranty.
- 7. All free service are at Dealer's service point only.
- 8. Warranty ceases if service is not done periodically.
- 9. The attached card should be completed and returned to Ratnagiri Impex Pvt. Ltd. for registration immediately after sale / delivery.
- 10. The warranty is void unless you register the warranty card with Ratnagiri Impex Pvt. Ltd.
- 11. The decision of Ratnagiri Impex Pvt. Ltd., in settling the warranty is final in all respects.
- 12. All disputes are subject to Bangalore Courts Jurisdiction



FREE SERVICE COUPON (30DAYS/30HRS. WHICHEVER IS EARLIER)

MODEL

SERIAL NUMBER

PDI DATE

SERVICE NO.

PURCHASE BILL NO.

DATE

DEALERS OFFICE SEAL

- 1. Check and test the fuel mixture
- 3. Check , clean and adjust the spark plug
- 5. Check and sparken the cutting tools
- 7. Start and check the noise, vibration, loosen etc..

OPERATIONS

- 2. check and clean the air filter
- 4. Check and adjust the carburetor tuning
- 6. Product familirisation on usage
- 8. Routine maintenance and shortage.

FREE SERVICE COUPON (30DAYS/30HRS. WHICHEVER IS EARLIER)

MODEL

SERIAL NUMBER

PDI DATE

SERVICE NO.

PURCHASE BILL NO.

DATE

DEALERS OFFICE SEAL

- 1. Check and test the fuel mixture
- 3. Check , clean and adjust the spark plug
- 5. Check and sparken the cutting tools
- 7. Start and check the noise, vibration, loosen etc..

OPERATIONS

- 2. check and clean the air filter
- 4. Check and adjust the carburetor tuning
- 6. Product familirisation on usage
- 8. Routine maintenance and shortage.

FREE SERVICE COUPON (30DAYS/30HRS. WHICHEVER IS EARLIER)

MODEL

SERIAL NUMBER

PDI DATE

SERVICE NO.

PURCHASE BILL NO.

DATE

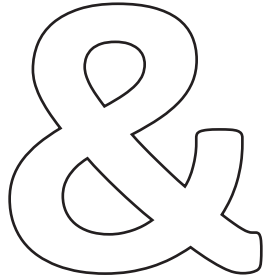
DEALERS OFFICE SEAL

- 1. Check and test the fuel mixture
- 3. Check , clean and adjust the spark plug
- 5. Check and sparken the cutting tools
- 7. Start and check the noise, vibration, loosen etc..

OPERATIONS

- 2. check and clean the air filter
- 4. Check and adjust the carburetor tuning
- 6. Product familirisation on usage
- 8. Routine maintenance and shortage.

DOS

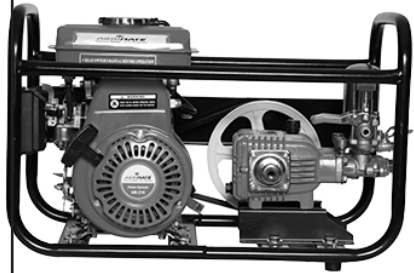
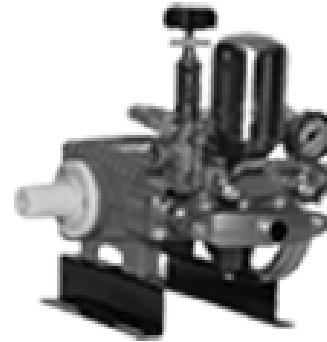


DONT'S

1. Always read the instruction manual supplied along with the equipments and understand the correct installation and operating procedures before attempting to use the equipments.
2. It is important to use the personal protection equipments such as head helmet with visor, ear defenders, goggles, safety gloves, cut resistant shoes, trousers and jackets while operating potentially dangerous machines
3. Avoid untrained persons using the equipments. Children must not be allowed to handle these equipments
4. Always use genuine spares and accessories in repairs and usage to derive maximum life of the equipments.
5. Always keep the equipments in good working condition to minimize loss of output as well as to reduce the pollution and save the environment
6. Do not use the machine within range of persons unless they wear protective clothing
7. Do not operate the machine when fatigued or under the influence of alcohol or drugs
8. When the machine is running, please maintain a constant water supply. Without water circulation will damage the sealing rings of the machine.
9. For more query kindly contact for our Service Center/Dealer/ franchise

Agrimate Army For Pest Control

ANY WHERE - ANY TIME - ANY CROP



Marketed by:
**ratnagiri
impex**
BRINGING YOU THE FUTURE... NOW

RATNAGIRI IMPEX PVT., LTD.,

Annapurna House, #1 / 1G, 7th Cross, New
Guddadahalli

Mysore Road, Bangalore - 560 026

Missed Call : 7393 938 938

Email: ask@agrimart.in