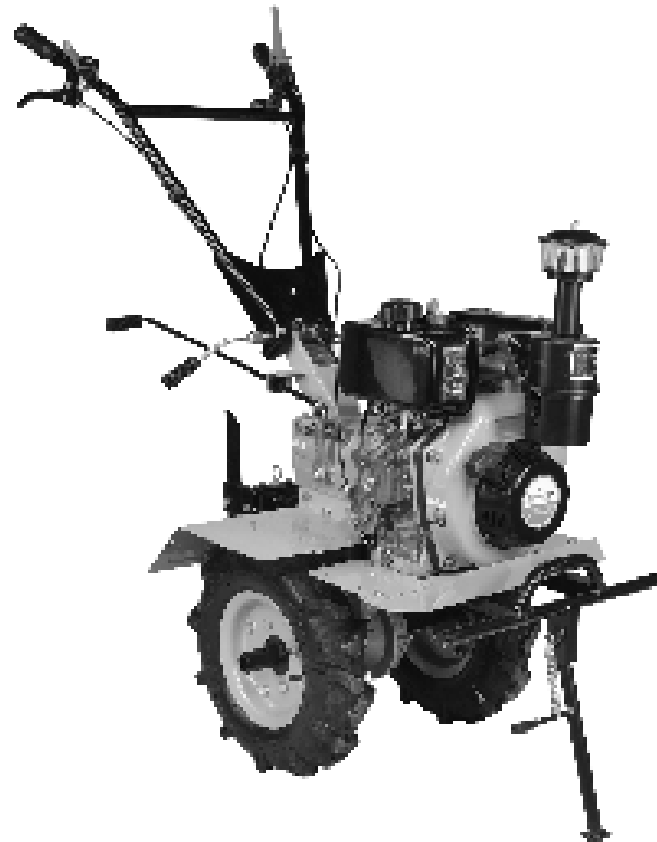
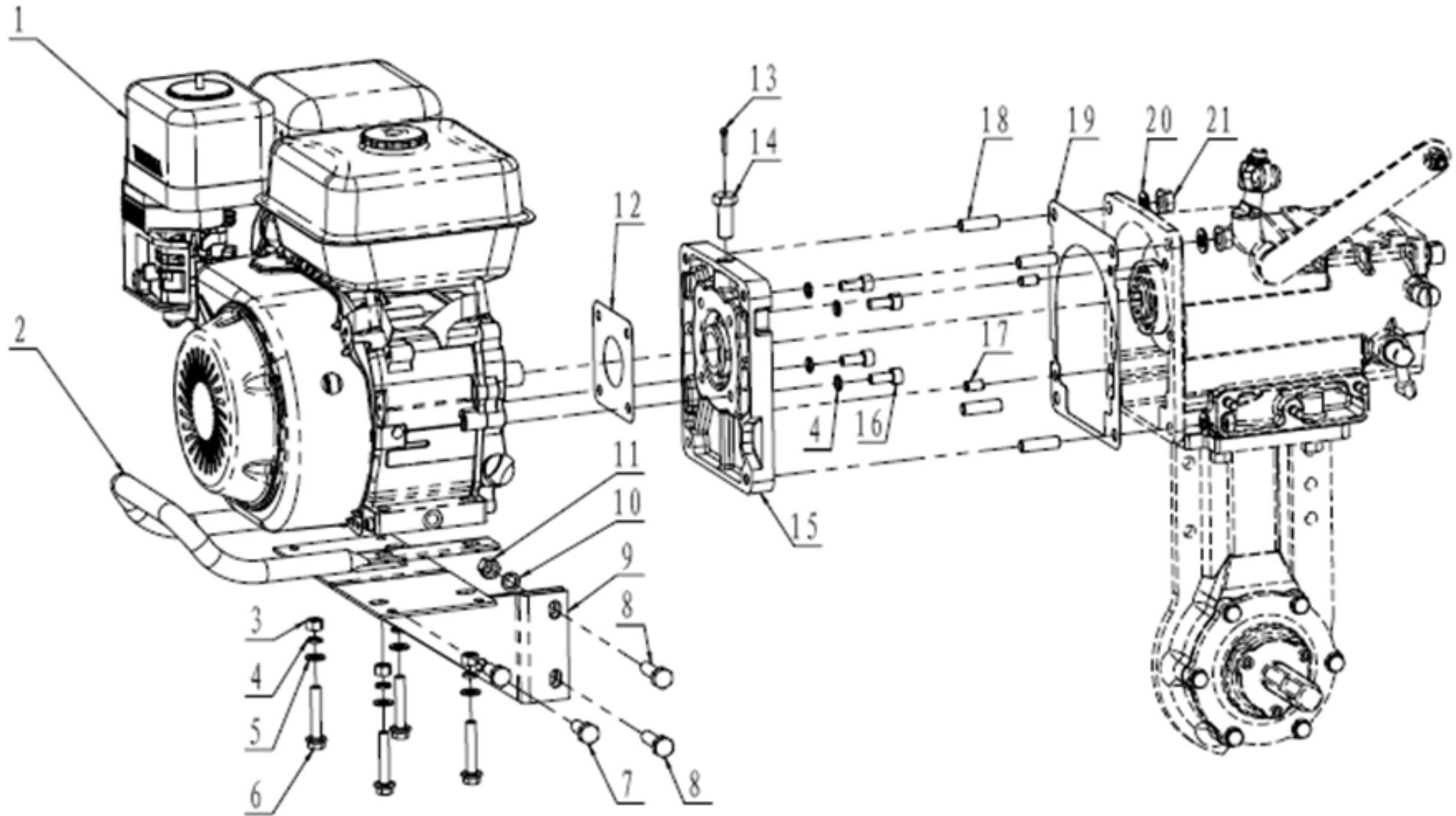


INTERCULTIVATOR/POWER WEEDER TRANSMISSION DIAGRAM 5D/6D ELITE/5P /212



TRANSMISSION DIAGRAM & PART LIST OF 5D/6D/5P & 212 INTERCULTIVATOR

Bumper, Engine Support Frame and Flange Parts - A

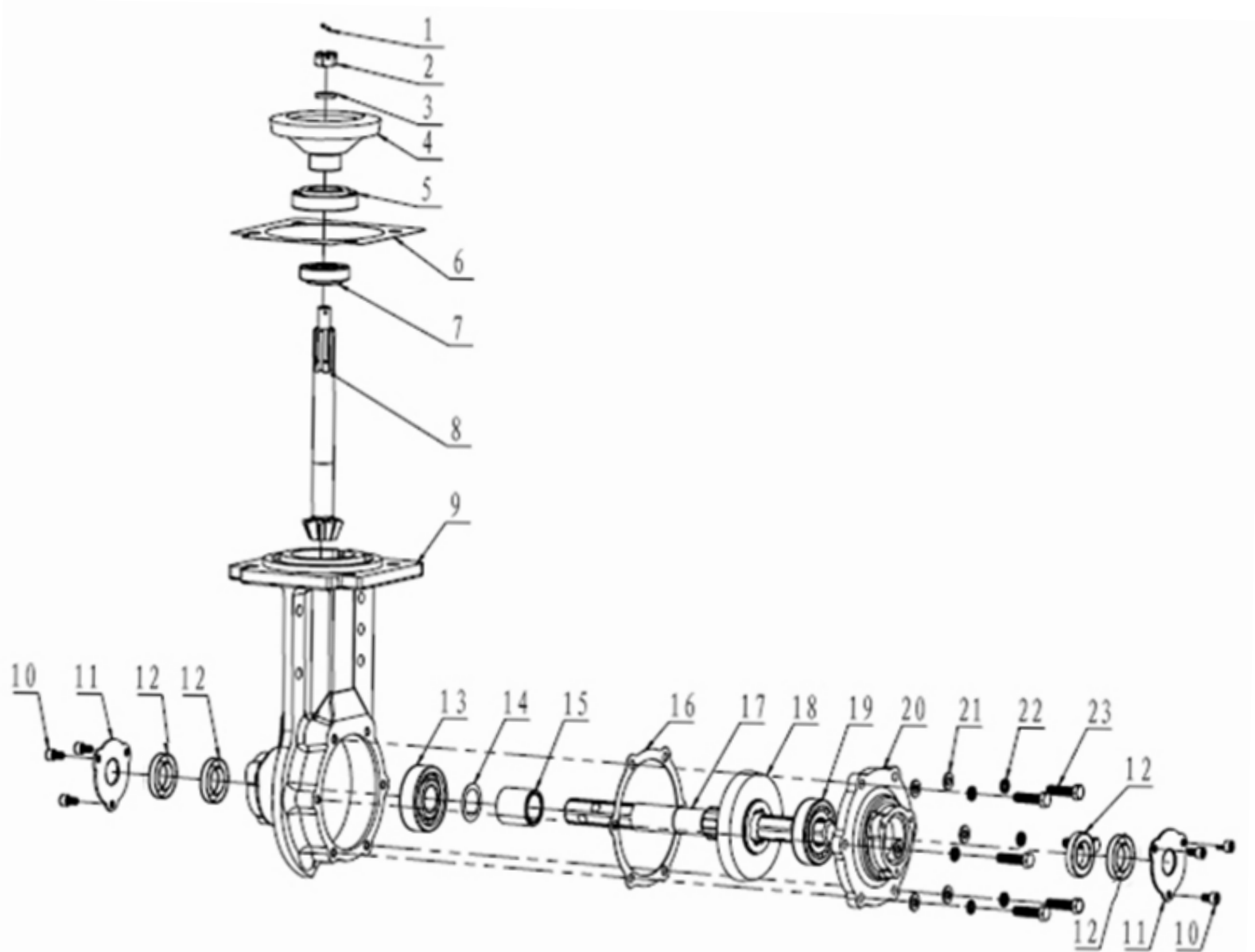


TRANSMISSION DIAGRAM & PART LIST OF 5D/6D/5P & 212 INTERCULTIVATOR

SL NO	PART NO	DESCRIPTION	SL NO	PART NO	DESCRIPTION
1	AM-RTD-5D/6DE-TA01	AM 178F ENGINE	17	AM-RTD-5D/6DE-TA17	Pin
2	AM-RTD-5D/6DE-TA02	Bumper comp	18	AM-RTD-5D/6DE-TA18	double end studs
3	AM-RTD-5D/6DE-TA03	Hex nut M8(C grade 1 type)	19	AM-RTD-5D/6DE-TA19	Aiproof gasket,gear box
4	AM-RTD-5D/6DE-TA04	spring washer 8	20	AM-RTD-5D/6DE-TA20	Washer
5	AM-RTD-5D/6DE-TA05	Washer	21	AM-RTD-5D/6DE-TA21	Hex bolt with flange
6	AM-RTD-5D/6DE-TA06	Hex bolt with flange			
7	AM-RTD-5D/6DE-TA07	Hexagon head bolts-full thread			
8	AM-RTD-5D/6DE-TA08	Hexagon head bolts-full thread			
9	AM-RTD-5D/6DE-TA09	Support frame, engine			
10	AM-RTD-5D/6DE-TA10	spring washer			
11	AM-RTD-5D/6DE-TA11	Hex nut			
12	AM-RTD-5D/6DE-TA12	Flange gasket			
13	AM-RTD-5D/6DE-TA13	Splitpin			
14	AM-RTD-5D/6DE-TA14	Bolt			
15	AM-RTD-5D/6DE-TA15	Flange			
16	AM-RTD-5D/6DE-TA16	screw			

TRANSMISSION DIAGRAM & PART LIST OF 5D/6D/5P & 212 INTERCULTIVATOR

Walking Case Assy - B

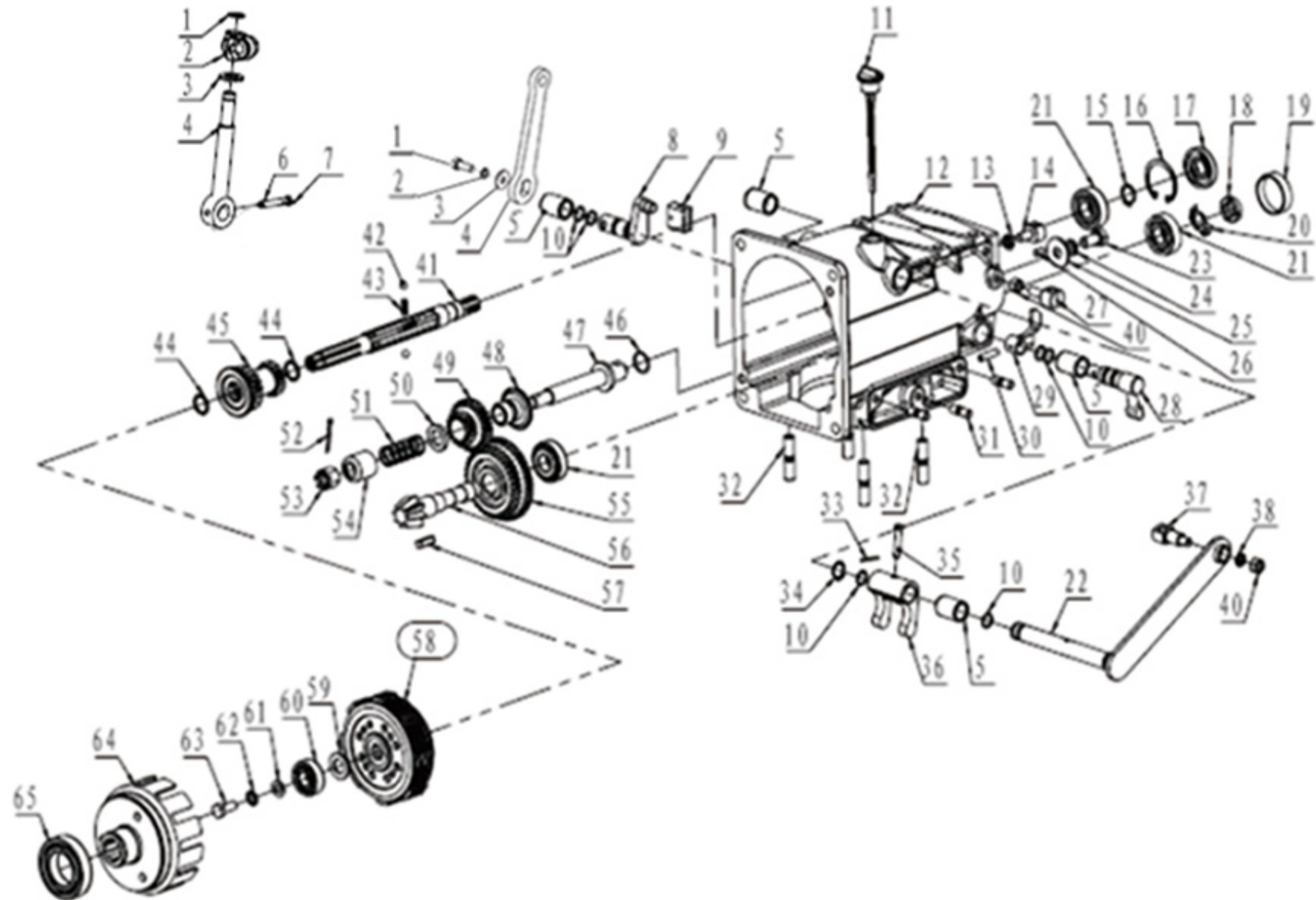


TRANSMISSION DIAGRAM & PART LIST OF 5D/6D/5P & 212 INTERCULTIVATOR

SL NO	PART NO	DESCRIPTION	SL NO	PART NO	DESCRIPTION
1	AM-RTD-5D/6DE-TB01	Splitpin	17	AM-RTD-5D/6DE-TB17	Hex output axes
2	AM-RTD-5D/6DE-TB02	Hex Nut	18	AM-RTD-5D/6DE-TB18	Walking umbrella gear
3	AM-RTD-5D/6DE-TB03	spring washer	19	AM-RTD-5D/6DE-TB19	Taper ball bearing
4	AM-RTD-5D/6DE-TB04	Driven umbrella gear	20	AM-RTD-5D/6DE-TB20	Side cover
5	AM-RTD-5D/6DE-TB05	Taper ball bearing	21	AM-RTD-5D/6DE-TB21	Washer
6	AM-RTD-5D/6DE-TB06	gasket	22	AM-RTD-5D/6DE-TB22	spring washer
7	AM-RTD-5D/6DE-TB07	Taper ball bearing	23	AM-RTD-5D/6DE-TB23	Hexagon head bolts
8	AM-RTD-5D/6DE-TB08	Umbrella gear axes			
9	AM-RTD-5D/6DE-TB09	Walking case			
10	AM-RTD-5D/6DE-TB10	screw			
11	AM-RTD-5D/6DE-TB11	oil seal block,output axes			
12	AM-RTD-5D/6DE-TB12	Oil seal			
13	AM-RTD-5D/6DE-TB13	bearing			
14	AM-RTD-5D/6DE-TB14	Adjusting gasket			
15	AM-RTD-5D/6DE-TB15	Cover,output axes			
16	AM-RTD-5D/6DE-TB16	Side cover gasket			

TRANSMISSION DIAGRAM & PART LIST OF 5D/6D/5P & 212 INTERCULTIVATOR

Gear Box Assy -D



TRANSMISSION DIAGRAM & PART LIST OF 5D/6D/5P & 212 INTERCULTIVATOR

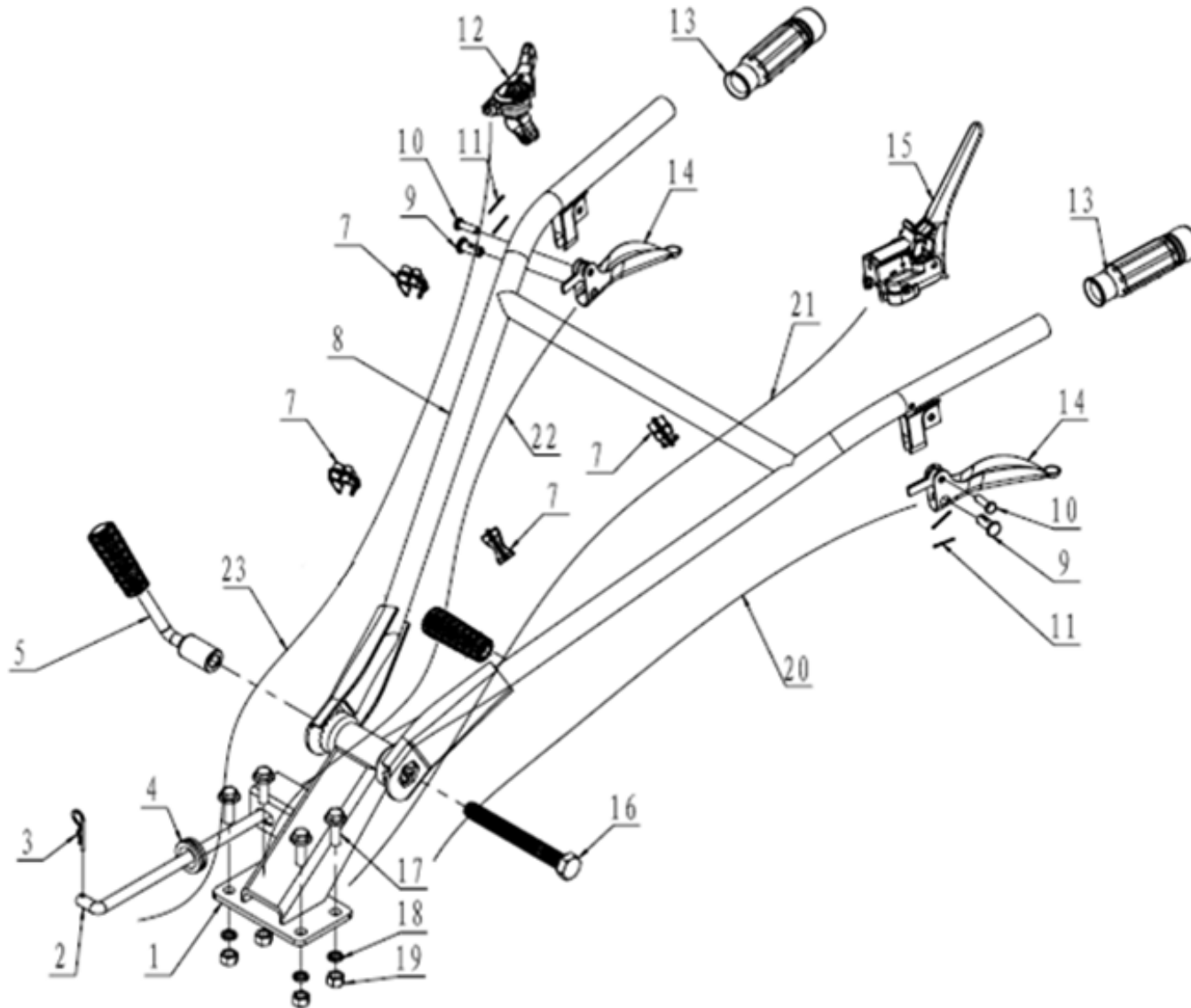
SL NO	PART NO	DESCRIPTION	SL NO	PART NO	DESCRIPTION
1	AM-RTD-5D/6DE-TD01	Hexagon flange bolt	17	AM-RTD-5D/6DE-TD17	oil seal
2	AM-RTD-5D/6DE-TD02	Spring clip	18	AM-RTD-5D/6DE-TD18	Nut
3	AM-RTD-5D/6DE-TD03	Extraordinary	19	AM-RTD-5D/6DE-TD19	oil plug
4	AM-RTD-5D/6DE-TD04	Sheath,Shift Rod	20	AM-RTD-5D/6DE-TD20	Washer
5	AM-RTD-5D/6DE-TD05	sheath,cluth fork axes	21	AM-RTD-5D/6DE-TD21	bearing
6	AM-RTD-5D/6DE-TD06	N/A	22	AM-RTD-5D/6DE-TD22	Axes,cluth fork
7	AM-RTD-5D/6DE-TD07	N/A	23	AM-RTD-5D/6DE-TD23	Hexagon head bolts-full thread
8	AM-RTD-5D/6DE-TD08	Shift Axes	24	AM-RTD-5D/6DE-TD24	spring washer
9	AM-RTD-5D/6DE-TD09	Shift fork	25	AM-RTD-5D/6DE-TD25	Washer
10	AM-RTD-5D/6DE-TD10	O-ring	26	AM-RTD-5D/6DE-TD26	round pin
11	AM-RTD-5D/6DE-TD11	Oil stick	27	AM-RTD-5D/6DE-TD27	Seat,reverse gear cable
12	AM-RTD-5D/6DE-TD12	Gear box	28	AM-RTD-5D/6DE-TD28	Axes,reverse gear fork
13	AM-RTD-5D/6DE-TD13	Nut	29	AM-RTD-5D/6DE-TD29	Rever gear fork
14	AM-RTD-5D/6DE-TD14	Seat,cluth cable	30	AM-RTD-5D/6DE-TD30	Hex bolt with flange
15	AM-RTD-5D/6DE-TD15	Washer	31	AM-RTD-5D/6DE-TD31	Double end studs
16	AM-RTD-5D/6DE-TD16	Washer	32	AM-RTD-5D/6DE-TD32	Double end studs

TRANSMISSION DIAGRAM & PART LIST OF 5D/6D/5P & 212 INTERCULTIVATOR

SL NO	PART NO	DESCRIPTION	SL NO	PART NO	DESCRIPTION
33	AM-RTD-5D/6DE-TD33	Splitpin	49	AM-RTD-5D/6DE-TD49	Spring seat,reverse gear
34	AM-RTD-5D/6DE-TD34	spring washer	50	AM-RTD-5D/6DE-TD50	Spring seat,reverse gear
35	AM-RTD-5D/6DE-TD35	Pin	51	AM-RTD-5D/6DE-TD51	Splitpin
36	AM-RTD-5D/6DE-TD36	Cluth fork	52	AM-RTD-5D/6DE-TD52	Hex nut
37	AM-RTD-5D/6DE-TD37	Seat,cluth cable	53	AM-RTD-5D/6DE-TD53	Restrict cover,reverse gear
38	AM-RTD-5D/6DE-TD38	spring washer	54	AM-RTD-5D/6DE-TD54	2nd generation Double gear,countershaft
39	AM-RTD-5D/6DE-TD39	Hex nut	55	AM-RTD-5D/6DE-TD55	Countershaft
40	AM-RTD-5D/6DE-TD40	Principal axes(with output)	56	AM-RTD-5D/6DE-TD56	Key
41	AM-RTD-5D/6DE-TD41	Steel ball	57	AM-RTD-5D/6DE-TD57	Core comp, clutch
42	AM-RTD-5D/6DE-TD42	Spring ,shift lever	58	AM-RTD-5D/6DE-TD58	Clutch washer
43	AM-RTD-5D/6DE-TD43	Ring	59	AM-RTD-5D/6DE-TD59	bearing
44	AM-RTD-5D/6DE-TD44	2nd generation Iniative gear	60	AM-RTD-5D/6DE-TD60	Washer
45	AM-RTD-5D/6DE-TD45	O-ring	61	AM-RTD-5D/6DE-TD61	Sawtooh loched gasket
46	AM-RTD-5D/6DE-TD46	Axes,reverse gear	62	AM-RTD-5D/6DE-TD62	Hexagon head bolts-full thread
47	AM-RTD-5D/6DE-TD47	Pushing plate,reverse gear	63	AM-RTD-5D/6DE-TD63	Cover,clutch
48	AM-RTD-5D/6DE-TD48	Double gear,reverse gear	64	AM-RTD-5D/6DE-TD64	bearing

TRANSMISSION DIAGRAM & PART LIST OF 5D/6D/5P & 212 INTERCULTIVATOR

Handle Control Parts - E

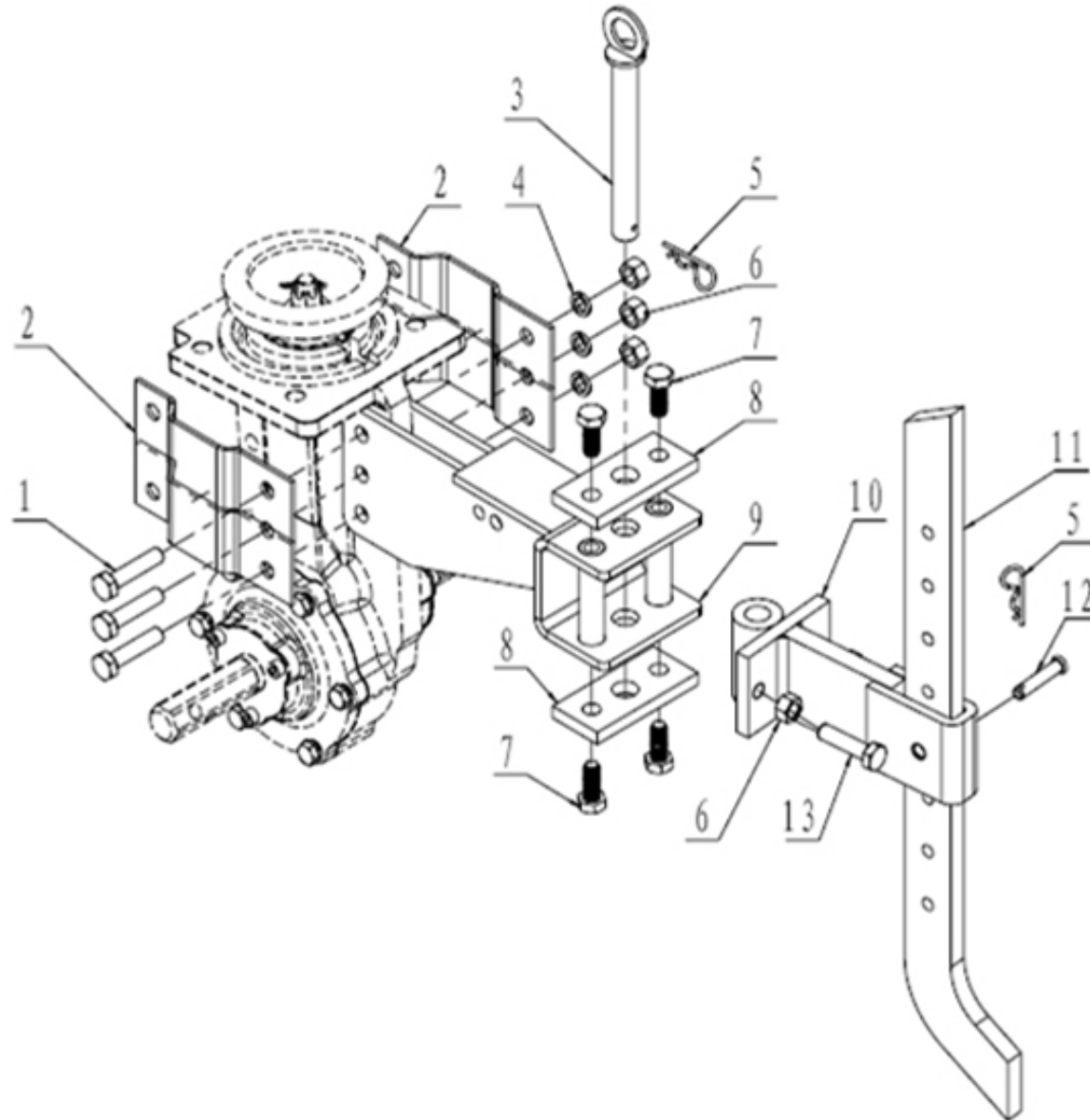


TRANSMISSION DIAGRAM & PART LIST OF 5D/6D/5P & 212 INTERCULTIVATOR

SL NO	PART NO	DESCRIPTION	SL NO	PART NO	DESCRIPTION
1	AM-RTD-5D/6DE-TE01	Handle seat	17	AM-RTD-5D/6DE-TE16	Hex bolt with flange
2	AM-RTD-5D/6DE-TE02	shift lever	18	AM-RTD-5D/6DE-TE17	spring washer
3	AM-RTD-5D/6DE-TE03	Clip	19	AM-RTD-5D/6DE-TE18	Hex nut
4	AM-RTD-5D/6DE-TE04	Handle seat wear-sleeve	20	AM-RTD-5D/6DE-TE19	Clutch Cable
5	AM-RTD-5D/6DE-TE05	High And Low Lock Comp	21	AM-RTD-5D/6DE-TE20	Flameout Switch Cable Comp
7	AM-RTD-5D/6DE-TE06	Clip	22	AM-RTD-5D/6DE-TE21	Reverse Gear Cable
8	AM-RTD-5D/6DE-TE07	Handle bar	23	AM-RTD-5D/6DE-TE22	Throttle Cable Comp
9	AM-RTD-5D/6DE-TE08	lacking cord connector			
10	AM-RTD-5D/6DE-TE09	Pin			
11	AM-RTD-5D/6DE-TE10	Splitpin			
12	AM-RTD-5D/6DE-TE11	Shut Down Switch Comp			
13	AM-RTD-5D/6DE-TE12	Grip			
14	AM-RTD-5D/6DE-TE13	Reverse Gear/Clutch Grip			
15	AM-RTD-5D/6DE-TE14	Emergency stop handlebar			
16	AM-RTD-5D/6DE-TE15	Hexagon head bolts-full thread			

TRANSMISSION DIAGRAM & PART LIST OF 5D/6D/5P & 212 INTERCULTIVATOR

Dragging Assy, Connection Frame & Resistance- F

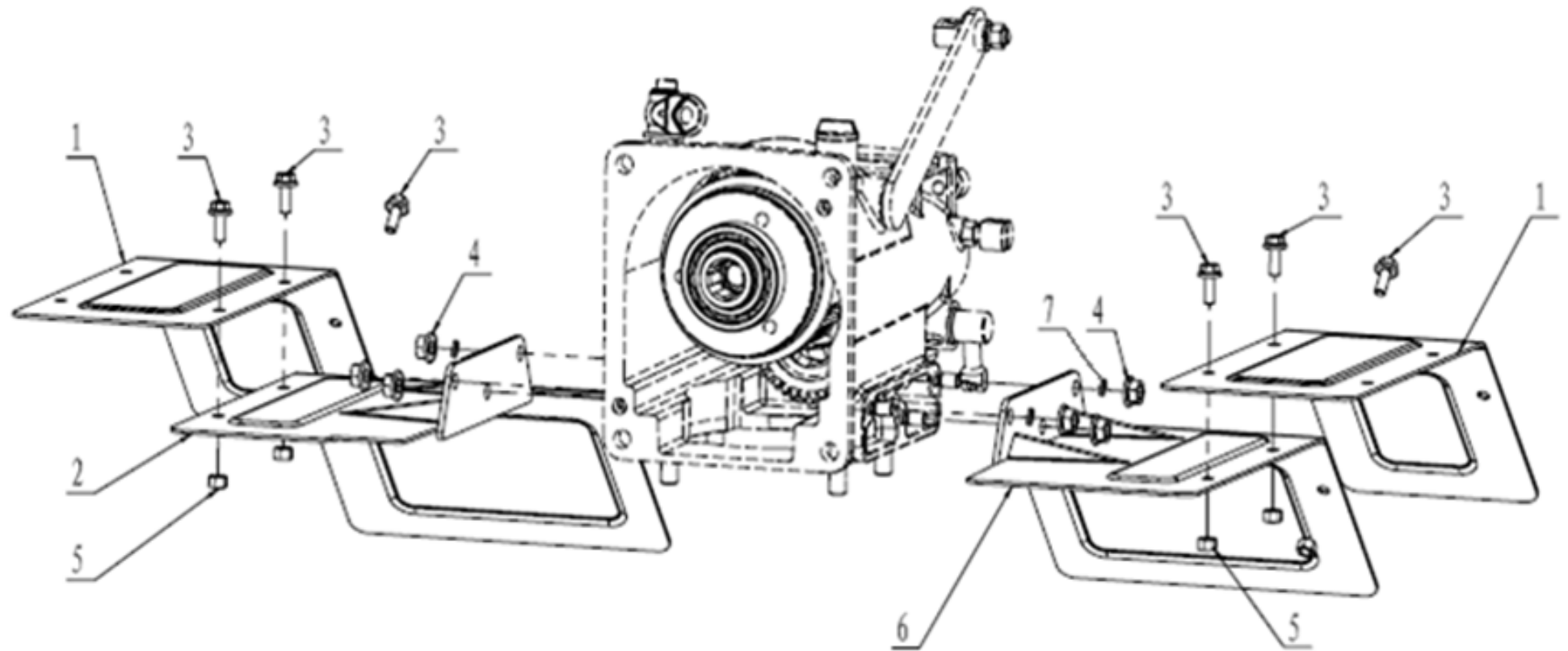


TRANSMISSION DIAGRAM & PART LIST OF 5D/6D/5P & 212 INTERCULTIVATOR

SL NO	PART NO	DESCRIPTION	SL NO	PART NO	DESCRIPTION
1	AM-RTD-5D/6DE-TF01	Hexagon head bolts-full thread			
2	AM-RTD-5D/6DE-TF02	connection plate, dragging assy			
3	AM-RTD-5D/6DE-TF03	Pin with ring			
4	AM-RTD-5D/6DE-TF04	spring washer			
5	AM-RTD-5D/6DE-TF05	Clip B			
6	AM-RTD-5D/6DE-TF06	Hex nut			
7	AM-RTD-5D/6DE-TF07	Hexagon head bolts-full thread			
8	AM-RTD-5D/6DE-TF08	reinforced plate,dragging assy			
9	AM-RTD-5D/6DE-TF09	Dragging assy			
10	AM-RTD-5D/6DE-TF10	Connection frame			
11	AM-RTD-5D/6DE-TF11	Resistance rod			
12	AM-RTD-5D/6DE-TF12	Pin			
13	AM-RTD-5D/6DE-TF13	Hexagon head bolts-full thread			

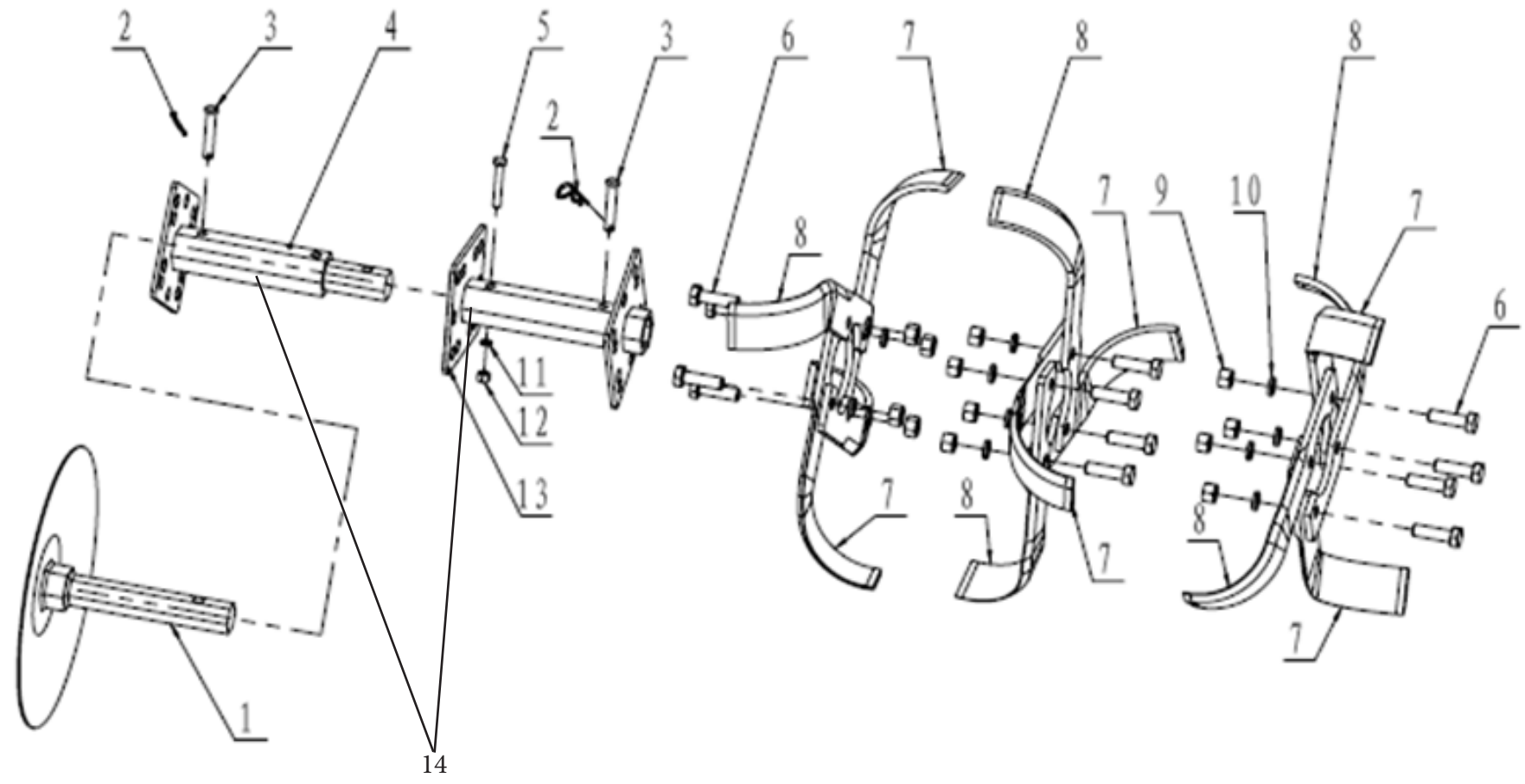
TRANSMISSION DIAGRAM & PART LIST OF 5D/6D/5P & 212 INTERCULTIVATOR

Fender Parts - G



TRANSMISSION DIAGRAM & PART LIST OF 5D/6D/5P & 212 INTERCULTIVATOR

Rotary Blades Parts- H

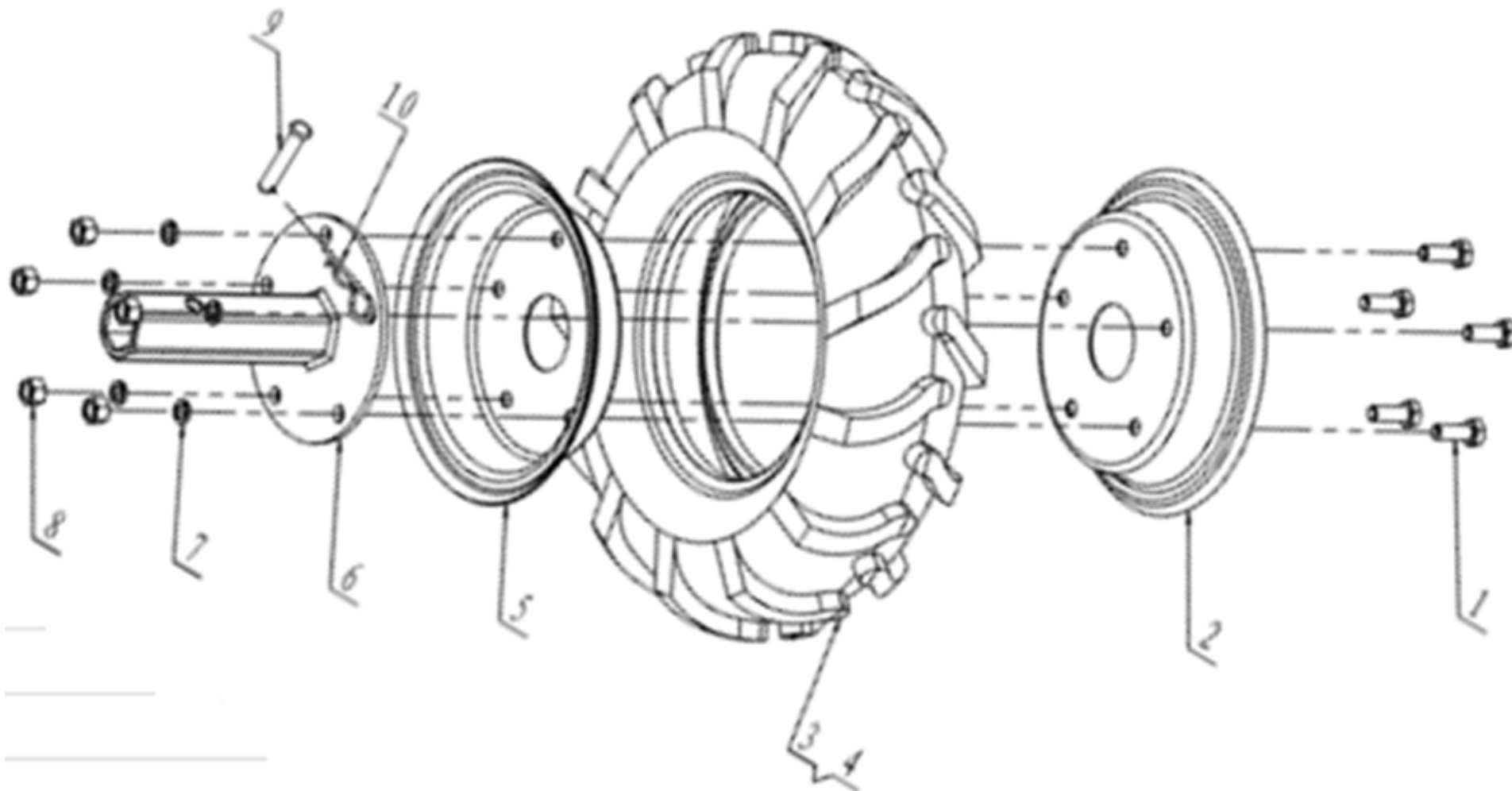


TRANSMISSION DIAGRAM & PART LIST OF 5D/6D/5P & 212 INTERCULTIVATOR

SL NO	PART NO	DESCRIPTION	SL NO	PART NO	DESCRIPTION
1	AM-RTD-5D/6DE-TH01	Discs (Optional)			
2	AM-RTD-5D/6DE-TH02	Clip B			
3	AM-RTD-5D/6DE-TH03	Pin			
4	AM-RTD-5D/6DE-TH04	Blade tube			
5	AM-RTD-5D/6DE-TH05	Hexagon head bolts-full thread			
6	AM-RTD-5D/6DE-TH06	Hexagon head bolts-full thread			
7	AM-RTD-5D/6DE-TH07	Blade (R)			
8	AM-RTD-5D/6DE-TH08	Blade (L)			
9	AM-RTD-5D/6DE-TH09	Hex nut			
10	AM-RTD-5D/6DE-TH10	spring washer			
11	AM-RTD-5D/6DE-TH11	spring washer			
12	AM-RTD-5D/6DE-TH12	Hex nut			
13	AM-RTD-5D/6DE-TH13	Main tube			
14	AM-RTD-5D/6DE-TH14	Blade Tube 2+1			

TRANSMISSION DIAGRAM & PART LIST OF 5D/6D/5P & 212 INTERCULTIVATOR

Wheels Parts - J



TRANSMISSION DIAGRAM & PART LIST OF 5D/6D/5P & 212 INTERCULTIVATOR

SL NO	PART NO	DESCRIPTION	SL NO	PART NO	DESCRIPTION
1	AM-RTD-5D/6DE-TJ01	Hexagon head bolts-full thread			
2	AM-RTD-5D/6DE-TJ02	Spoke (outer side with hole),4.0-8 wheel			
3	AM-RTD-5D/6DE-TJ03	Tire & TUBE 1SET			
4					
5	AM-RTD-5D/6DE-TJ05	Spoke (inner side),4.0-8 wheel			
6	AM-RTD-5D/6DE-TJ06	Wheel axle			
7	AM-RTD-5D/6DE-TJ07	spring washer 10(standard)			
8	AM-RTD-5D/6DE-TJ08	Hex nut M8(C grade,1 type)			
9	AM-RTD-5D/6DE-TJ09	Pin			
10	AM-RTD-5D/6DE-TJ10	Clip B			

INSPECTION & MAINTAINANCE

For safety use, make sure the machine is cleaned every three months. Before working, make sure to inspect the filter and the nozzle and ensure there is no impurity. After working, make sure there is no water in the pump and the hose.

If the machine needs to be repaired in the guarantee period, please return the machine to the shop. You need to provide the certificate of purchase on order to repair or get the substitute.

Before packing, the machine should be cleaned, then use closed packaging, packaging should be firm. Store the machine in dry place.

For transportation safety. The machine should comply with ISTA.






Do not dispose of electrical machines as unsorted municipal waste, use separate collection facilities.

If electrical machines are disposed of in landfills or dumps, hazardous substances can leak into the ground water and get into the food chain, damaging your health and well being.

When replacing old machines with new ones, the retailer is legally obligated to take back your old machine for disposals at least free of charge.

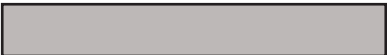




WARRANTY CARD

CUSTOMER COPY

DATE _____	DATE OF DELIVERY _____	DEALERS OFFICIAL SEAL	DEALERS SIGN _____
PURCHASERS NAME & ADDRESS _____ _____	 CUSTOMER SIGN		
PRODUCT NAME	PRODUCT SERIAL NO.	INVOICE/DN NO.	
			






I/Will accept the terms and conditions of warranty as in the warranty card

DEALERS COPY

DATE _____	DATE OF DELIVERY _____	DEALERS OFFICIAL SEAL	DEALERS SIGN _____
PURCHASERS NAME & ADDRESS _____ _____	 CUSTOMER SIGN		
PRODUCT NAME	PRODUCT SERIAL NO.	INVOICE/DN NO.	
			

I/Will accept the terms and conditions of warranty as in the warranty card

COMPANY COPY

DATE _____	DATE OF DELIVERY _____	DEALERS OFFICIAL SEAL	DEALERS SIGN _____
PURCHASERS NAME & ADDRESS _____ _____	 CUSTOMER SIGN		
PRODUCT NAME	PRODUCT SERIAL NO.	INVOICE/DN NO.	
			

I/Will accept the terms and conditions of warranty as in the warranty card

1. LIMITED WARRANTY PERIOD : For a period of six months from the date of Sale / delivery of the product which ever is earlier. 2. LIMITED WARRANTY OBLIGATION : Replacement of defective part(s) by authorized dealer are free of charges. If found defective by reasons of defective material / poor workmanship, parts will be replaced and there will be no value re-imburement. 3. TERMS & CONDITIONS : a. Claims under warranty will be accepted on submission of Warranty Card duly filled and stamped by authorized dealer together with the original purchase document. : b. Shipping / transportation / Incidental charges incurred in replacing defective parts under warranty shall be borne by the purchaser

WARRANTY null & void if

- (i) Lack of maintenance, (ii) Incorrect use of the machine or tampering, (iii) Use of non-genuine spare parts, (iv) Usage of acids, solvents, or any flammable materials, (v) Non-usage of filter water / clear water / soft water & using water above 40°C temperature, (vi) While using the pressure washers to draw water which is contaminated with dust & solvents (eg. paint thinners, gasoline, oil, etc.), (vii) Repair done by unauthorized service people, (viii) Those parts subject to wear & tear due to normal operations and plastic parts, rubber items etc, (ix) Loose connections, faulty electrical fixtures & fluctuations in power supply.
- 4. Should any failure occur during or after the warranty period, customer does not have the right to interrupt payment / price discount.
- 5. Incidental or consequential damages like inconvenience commercial loss, loss of tie, mental agony etc.
- 6. Loss of any nature due to operation or non-operation is not covered under warranty.
- 7. All free service are at Dealer's service point only.
- 8. Warranty ceases if service is not done periodically.
- 9. The attached card should be completed and returned to Ratnagiri Impex Pvt. Ltd. for registration immediately after sale / delivery.
- 10. The warranty is void unless you register the warranty card with Ratnagiri Impex Pvt. Ltd.
- 11. The decision of Ratnagiri Impex Pvt. Ltd., in settling the warranty is final in all respects.
- 12. All disputes are subject to Bangalore Courts Jurisdiction

1. LIMITED WARRANTY PERIOD : For a period of six months from the date of Sale / delivery of the product which ever is earlier. 2. LIMITED WARRANTY OBLIGATION : Replacement of defective part(s) by authorized dealer are free of charges. If found defective by reasons of defective material / poor workmanship, parts will be replaced and there will be no value re-imburement. 3. TERMS & CONDITIONS : a. Claims under warranty will be accepted on submission of Warranty Card duly filled and stamped by authorized dealer together with the original purchase document. : b. Shipping / transportation / Incidental charges incurred in replacing defective parts under warranty shall be borne by the purchaser.

WARRANTY null & void if

- (i) Lack of maintenance, (ii) Incorrect use of the machine or tampering, (iii) Use of non-genuine spare parts, (iv) Usage of acids, solvents, or any flammable materials, (v) Non-usage of filter water / clear water / soft water & using water above 40°C temperature, (vi) While using the pressure washers to draw water which is contaminated with dust & solvents (eg. paint thinners, gasoline, oil, etc.), (vii) Repair done by unauthorized service people, (viii) Those parts subject to wear & tear due to normal operations and plastic parts, rubber items etc, (ix) Loose connections, faulty electrical fixtures & fluctuations in power supply.
- 4. Should any failure occur during or after the warranty period, customer does not have the right to interrupt payment / price discount.
- 5. Incidental or consequential damages like inconvenience commercial loss, loss of tie, mental agony etc.
- 6. Loss of any nature due to operation or non-operation is not covered under warranty.
- 7. All free service are at Dealer's service point only.
- 8. Warranty ceases if service is not done periodically.
- 9. The attached card should be completed and returned to Ratnagiri Impex Pvt. Ltd. for registration immediately after sale / delivery.
- 10. The warranty is void unless you register the warranty card with Ratnagiri Impex Pvt. Ltd.
- 11. The decision of Ratnagiri Impex Pvt. Ltd., in settling the warranty is final in all respects.
- 12. All disputes are subject to Bangalore Courts Jurisdiction

1. LIMITED WARRANTY PERIOD : For a period of six months from the date of Sale / delivery of the product which ever is earlier. 2. LIMITED WARRANTY OBLIGATION : Replacement of defective part(s) by authorized dealer are free of charges. If found defective by reasons of defective material / poor workmanship, parts will be replaced and there will be no value re-imburement. 3. TERMS & CONDITIONS : a. Claims under warranty will be accepted on submission of Warranty Card duly filled and stamped by authorized dealer together with the original purchase document. : b. Shipping / transportation / Incidental charges incurred in replacing defective parts under warranty shall be borne by the purchaser.

WARRANTY null & void if

- (i) Lack of maintenance, (ii) Incorrect use of the machine or tampering, (iii) Use of non-genuine spare parts, (iv) Usage of acids, solvents, or any flammable materials, (v) Non-usage of filter water / clear water / soft water & using water above 40°C temperature, (vi) While using the pressure washers to draw water which is contaminated with dust & solvents (eg. paint thinners, gasoline, oil, etc.), (vii) Repair done by unauthorized service people, (viii) Those parts subject to wear & tear due to normal operations and plastic parts, rubber items etc, (ix) Loose connections, faulty electrical fixtures & fluctuations in power supply.
- 4. Should any failure occur during or after the warranty period, customer does not have the right to interrupt payment / price discount.
- 5. Incidental or consequential damages like inconvenience commercial loss, loss of tie, mental agony etc.
- 6. Loss of any nature due to operation or non-operation is not covered under warranty.
- 7. All free service are at Dealer's service point only.
- 8. Warranty ceases if service is not done periodically.
- 9. The attached card should be completed and returned to Ratnagiri Impex Pvt. Ltd. for registration immediately after sale / delivery.
- 10. The warranty is void unless you register the warranty card with Ratnagiri Impex Pvt. Ltd.
- 11. The decision of Ratnagiri Impex Pvt. Ltd., in settling the warranty is final in all respects.
- 12. All disputes are subject to Bangalore Courts Jurisdiction



FREE SERVICE COUPON (30DAYS/30HRS. WHICHEVER IS EARLIER)

MODEL

SERIAL NUMBER

PDI DATE

SERVICE NO.

PURCHASE BILL NO.

DATE

DEALERS OFFICE SEAL

- 1. Check and test the fuel mixture
- 3. Check , clean and adjust the spark plug
- 5. Check and sparken the cutting tools
- 7. Start and check the noise, vibration, loosen etc..

OPERATIONS

- 2. check and clean the air filter
- 4. Check and adjust the carburetor tuning
- 6. Product familirisation on usage
- 8. Routine maintenance and shortage.

FREE SERVICE COUPON (30DAYS/30HRS. WHICHEVER IS EARLIER)

MODEL

SERIAL NUMBER

PDI DATE

SERVICE NO.

PURCHASE BILL NO.

DATE

DEALERS OFFICE SEAL

- 1. Check and test the fuel mixture
- 3. Check , clean and adjust the spark plug
- 5. Check and sparken the cutting tools
- 7. Start and check the noise, vibration, loosen etc..

OPERATIONS

- 2. check and clean the air filter
- 4. Check and adjust the carburetor tuning
- 6. Product familirisation on usage
- 8. Routine maintenance and shortage.

FREE SERVICE COUPON (30DAYS/30HRS. WHICHEVER IS EARLIER)

MODEL

SERIAL NUMBER

PDI DATE

SERVICE NO.

PURCHASE BILL NO.

DATE

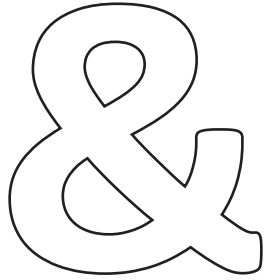
DEALERS OFFICE SEAL

- 1. Check and test the fuel mixture
- 3. Check , clean and adjust the spark plug
- 5. Check and sparken the cutting tools
- 7. Start and check the noise, vibration, loosen etc..

OPERATIONS

- 2. check and clean the air filter
- 4. Check and adjust the carburetor tuning
- 6. Product familirisation on usage
- 8. Routine maintenance and shortage.

DOS

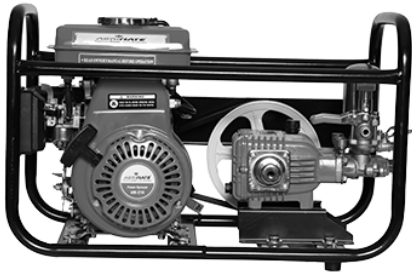
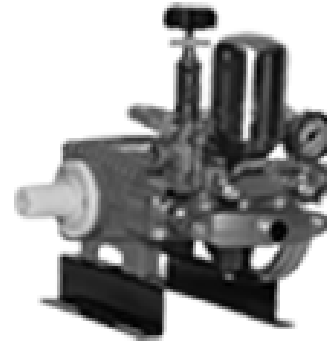


DONT'S

1. Always read the instruction manual supplied along with the equipments and understand the correct installation and operating procedures before attempting to use the equipments.
2. It is important to use the personal protection equipments such as head helmet with visor, ear defenders, goggles, safety gloves, cut resistant shoes, trousers and jackets while operating potentially dangerous machines
3. Avoid untrained persons using the equipments. Children must not be allowed to handle these equipments
4. Always use genuine spares and accessories in repairs and usage to derive maximum life of the equipments.
5. Always keep the equipments in good working condition to minimize loss of output as well as to reduce the pollution and save the environment
6. Do not use the machine within range of persons unless they wear protective clothing
7. Do not operate the machine when fatigued or under the influence of alcohol or drugs
8. When the machine is running, please maintain a constant water supply. Without water circulation will damage the sealing rings of the machine.
9. For more query kindly contact for our Service Center/Dealer/ franchise

Agrimate Army For Pest Control

ANY WHERE - ANY TIME - ANY CROP



Marketed by:
**ratnagiri
impex**
BRINGING YOU THE FUTURE... NOW

IMPORTED & MARKETING BY,
RATNAGIRI IMPEX PVT., LTD.,

Annapurna House, #1 / 1G, 7th Cross, New
Guddadahalli Mysore Road, Bangalore - 560 026

Missed Call : 7393 938 938 Email: ask@agrimart.in