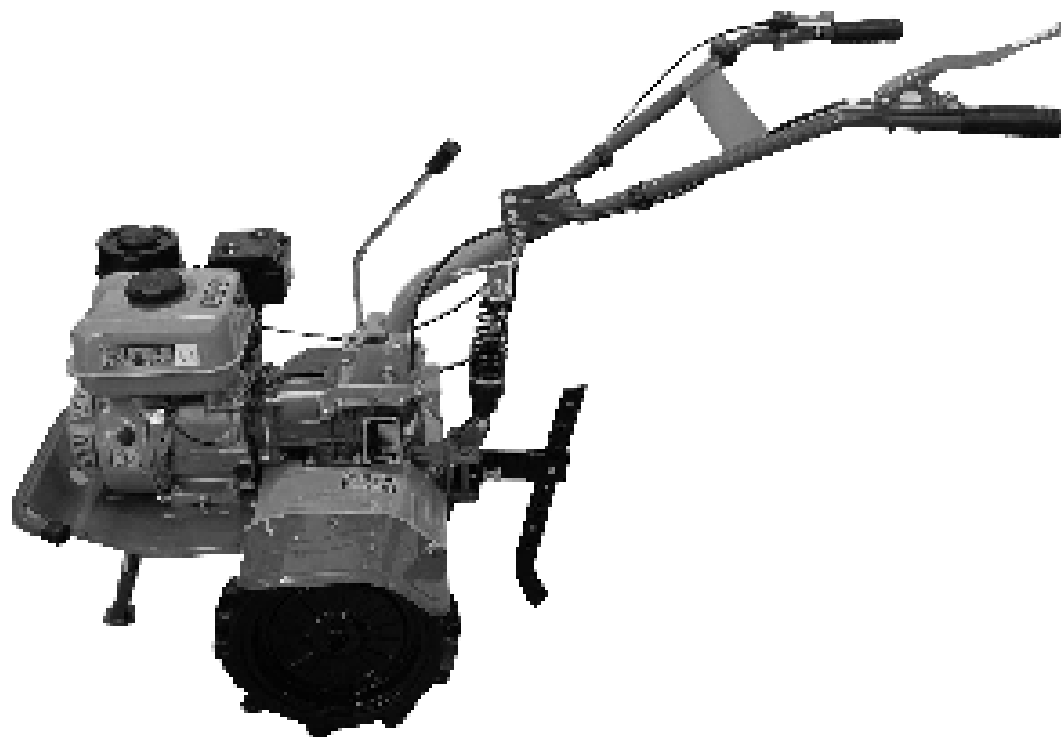


USER MANUAL


AGRIMATE[®]
Maximum Power - Super Economy

INTERCULTIVATOR/POWER WEEDER AM-RTP-7P-CHAMPION-NEW ELITE



INTRODUCTION

Dear Sir/ Madam,

Thank you for choosing Agrimate product. You are the proud owner of high technology & durable machine. Trust that our Franchisee/Dealer installed the product & installed the product and explained you about the usage & service instructions. Please visit our autorised dealer for your future requirement of our other equipments, genuine spares, accessories and services. Service coupons are attached with this manual and you can avail free service to keep your machine fit always to use on demand.

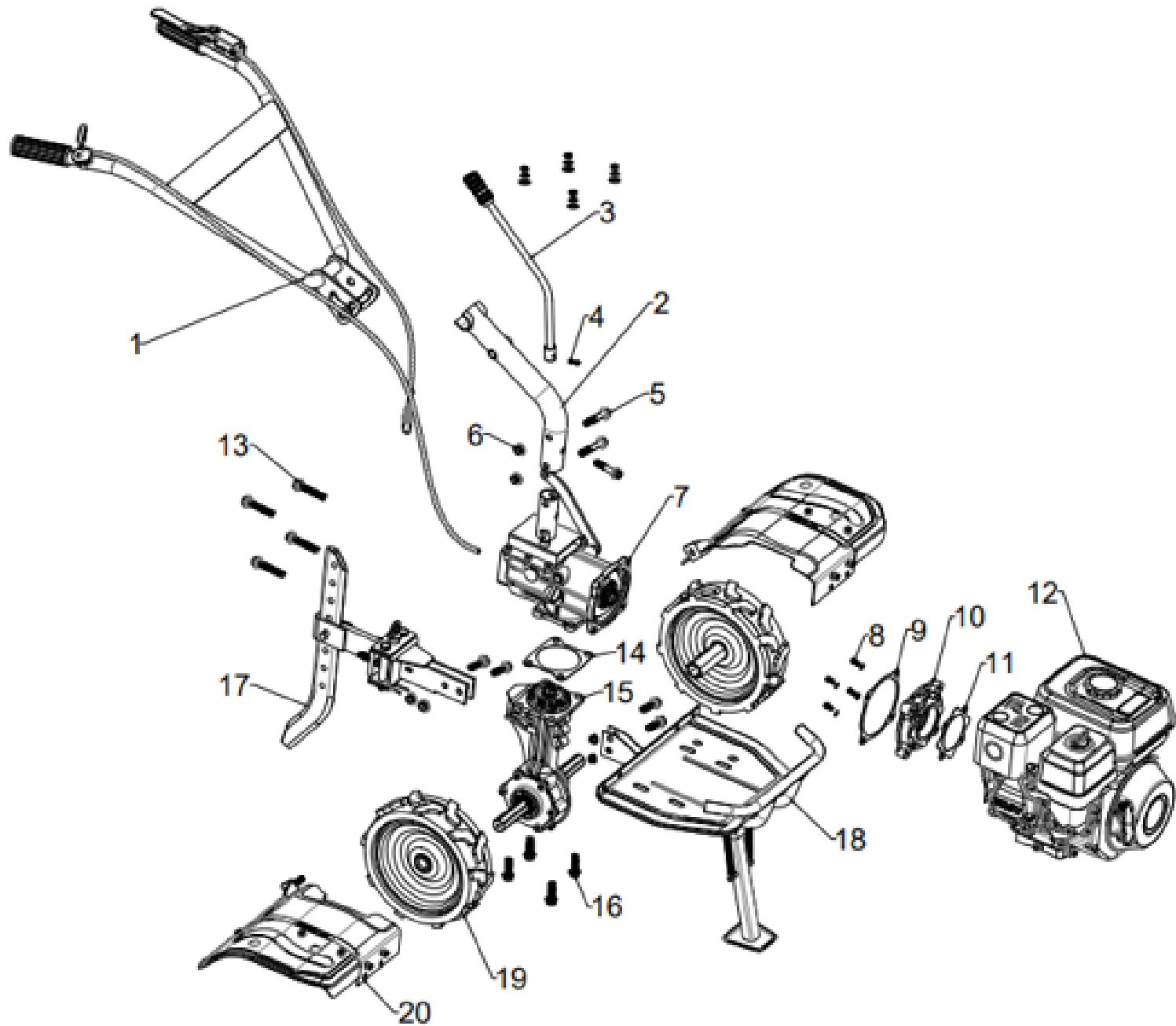
About Ratnagiri,

We import and market of high quality of agriculture wide range of equipments which we are selling through our authorised franchisee or dealer network. We are in this field from past years service the farmer. community. For further details, Please visit our website www.agrimart.in. & Give a missed call to 7393 938 938.

TECHNICAL SPECIFICATIONS

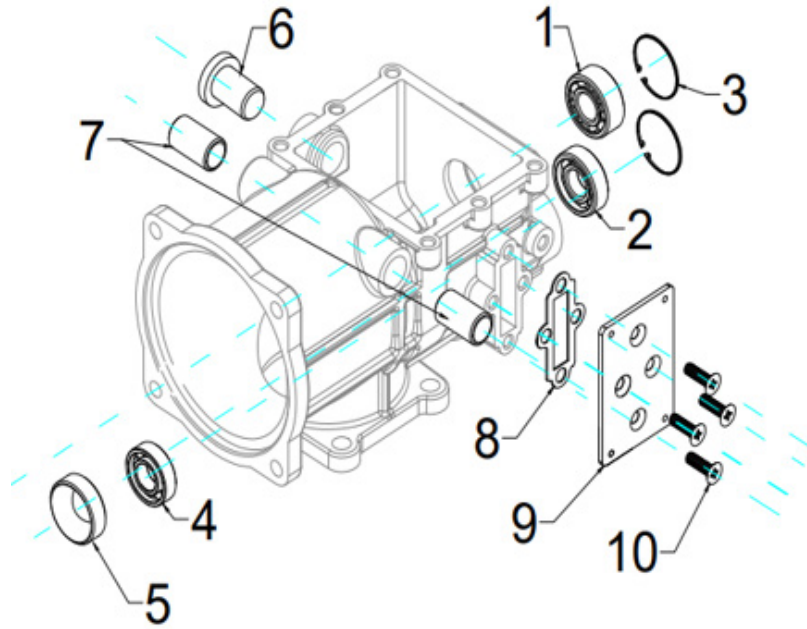
MODEL	AM-RTP-7P-CHAMPION-ELITE
DISPLACEMENT	212CC
POWER	7HP
SPEED	2FORWARD, 1 REVERSE
FULE TANK CAPACITY	3.6Ltr
NO. OF BLADES	24BLADES, SIDE DISC
TILLING WIDTH	600 - 1000MM
TILLING DEPTH	150MM
NET WEIGHT (APPROX)	65KG

MACHINE PARTS



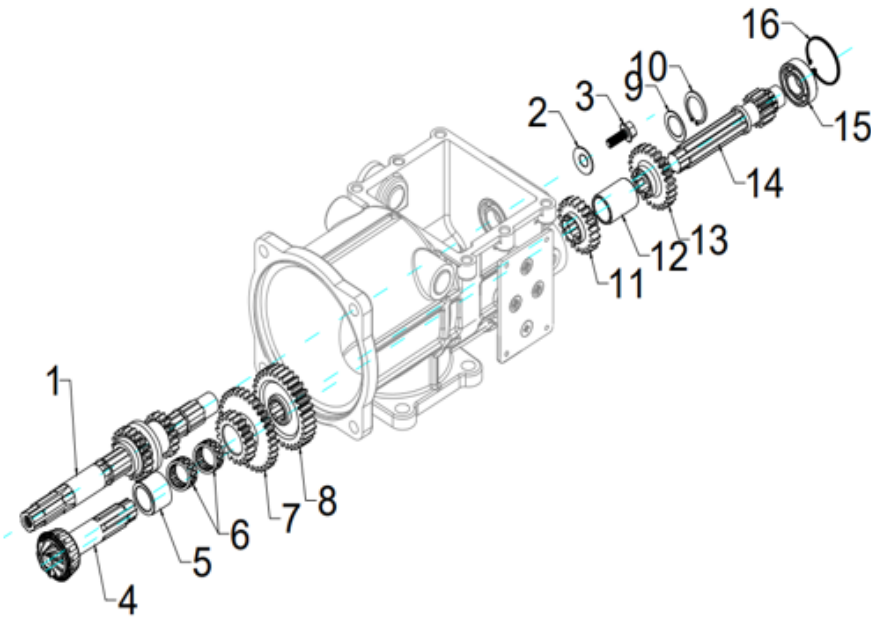
SL NO	PART NO	DESCRIPTION	SL NO	PART NO	DESCRIPTION
1	AM-RTP-7PMPE-TA01	Handle assy	13	AM-RTP-7PMPE-TA13	Bolt
2	AM-RTP-7PMPE-TA02	Handle middle part	14	AM-RTP-7PMPE-TA14	up and down gear box gasket
3	AM-RTP-7PMPE-TA03	Gear shifting lever	15	AM-RTP-7PMPE-TA15	down gear box assy
4	AM-RTP-7PMPE-TA04	Bolt	16	AM-RTP-7PMPE-TA16	Bolt
5	AM-RTP-7PMPE-TA05	Bolt	17	AM-RTP-7PMPE-TA17	Trailer connector
6	AM-RTP-7PMPE-TA06	NUT	18	AM-RTP-7PMPE-TA18	front stand
7	AM-RTP-7PMPE-TA07	Upper gear box assy	19	AM-RTP-7PMPE-TA19	walking wheels
8	AM-RTP-7PMPE-TA08	Bolt	20		
9	AM-RTP-7PMPE-TA09	Frange back gasket	21		
10	AM-RTP-7PMPE-TA10	Frange plate	22		
11	AM-RTP-7PMPE-TA11	Frange front gasket	23		
12	AM-RTP-7PMPE-TA12	Engine assy	24		

TRANSMISSION BOX - B



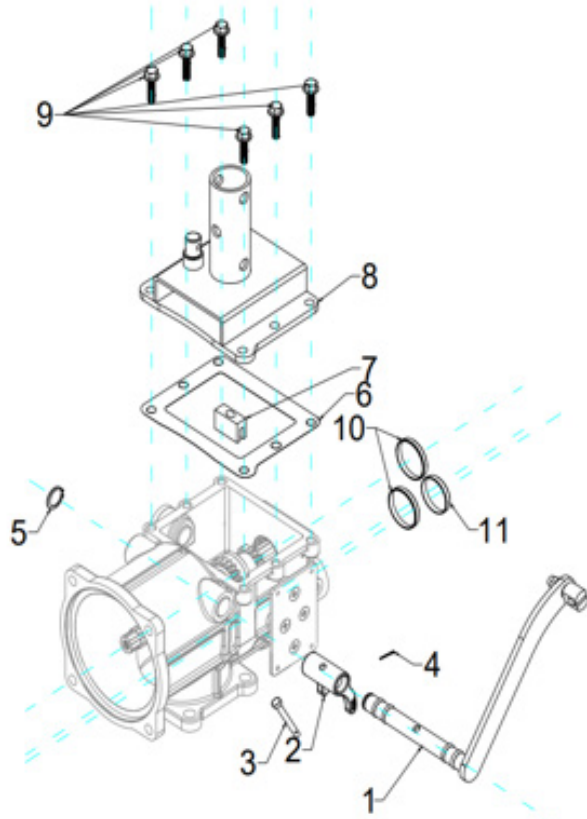
SL NO	PART NO	DESCRIPTION	SL NO	PART NO	DESCRIPTION
1	AM-RTP-7PMPE-TB01	Bearing	6	AM-RTP-7PMPE-TB06	Ruber plug
2	AM-RTP-7PMPE-TB02	Bearing	7	AM-RTP-7PMPE-TB07	Bush for clutch fork shaft
3	AM-RTP-7PMPE-TB03	Circlip	8	AM-RTP-7PMPE-TB08	Rubber gasket
4	AM-RTP-7PMPE-TB04	Bering	9	AM-RTP-7PMPE-TB09	Name plate
5	AM-RTP-7PMPE-TB05	Bearing cover	10	AM-RTP-7PMPE-TB10	Flat head bolt

TRANSMISSION BOX ASSY - C



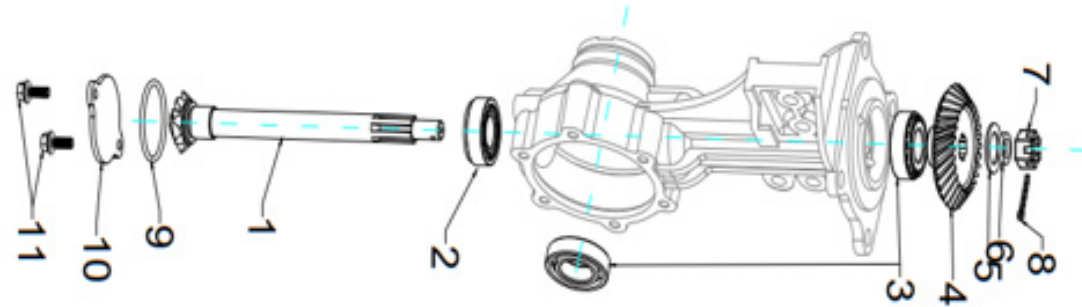
SL NO	PART NO	DESCRIPTION
1	AM-RTP-7PMPE-TC01	Main Shaft Assy
2	AM-RTP-7PMPE-TC02	Flat Washer
3	AM-RTP-7PMPE-TC03	Bolt With Reel
4	AM-RTP-7PMPE-TC04	Driving Umbrella Gear I(9Teeth)
5	AM-RTP-7PMPE-TC05	Spacer
6	AM-RTP-7PMPE-TC06	Needle Bearing
7	AM-RTP-7PMPE-TC07	Reverse Double Gear
8	AM-RTP-7PMPE-TC08	Driving Gear
9	AM-RTP-7PMPE-TC09	Steel Washer
10	AM-RTP-7PMPE-TC10	Circlip
11	AM-RTP-7PMPE-TC11	Gear
12	AM-RTP-7PMPE-TC12	Spacer
13	AM-RTP-7PMPE-TC13	Gear
14	AM-RTP-7PMPE-TC14	Counter Shaft
15	AM-RTP-7PMPE-TC15	Bearing
16	AM-RTP-7PMPE-TC16	Circlip

HANDLE CLUTCH LEVER ASSY - D



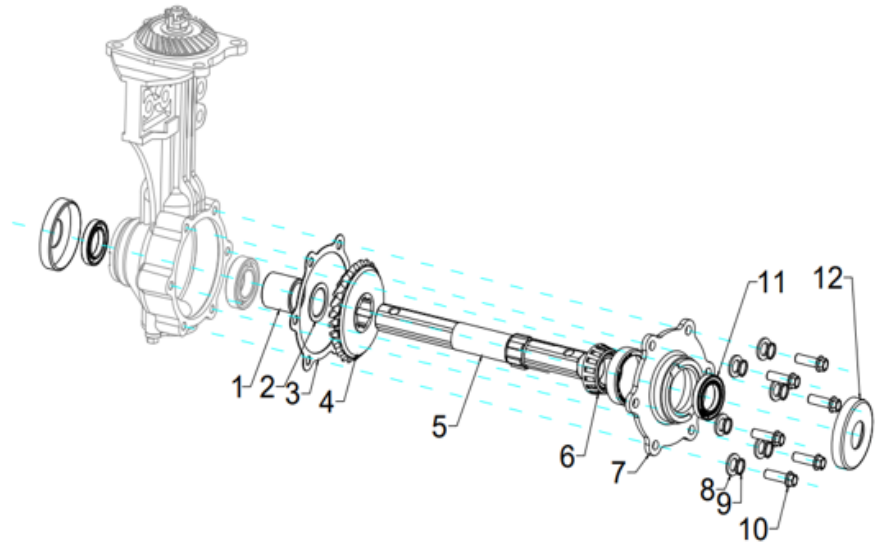
SL NO	PART NO	DESCRIPTION
1	AM-RTP-7PMPE-TD01	Clutch Fork Shaft
2	AM-RTP-7PMPE-TD02	Clutch Fork
3	AM-RTP-7PMPE-TD03	Pin
4	AM-RTP-7PMPE-TD04	Split Pin
5	AM-RTP-7PMPE-TD05	Circlip
6	AM-RTP-7PMPE-TD06	Top Cover Gasket
7	AM-RTP-7PMPE-TD07	Shifting Blcok
8	AM-RTP-7PMPE-TD08	Handle Seat
9	AM-RTP-7PMPE-TD09	Bolt With Reel
10	AM-RTP-7PMPE-TD10	Ruber Plug
11	AM-RTP-7PMPE-TD11	Ruber Plug

WALKING CASE - D



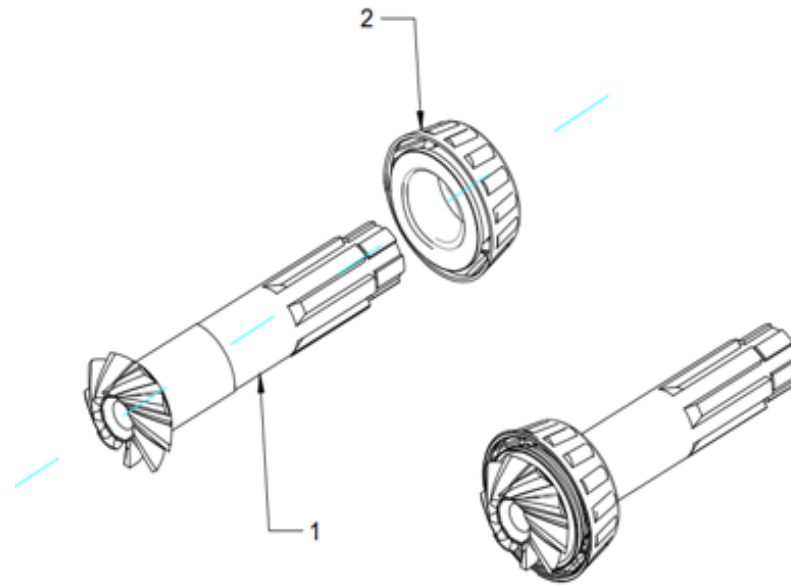
SL NO	PART NO	DESCRIPTION	SL NO	PART NO	DESCRIPTION
1	AM-RTP-7PMPE-TD01	Driving Umbrella Gear II (8 Teeth)	7	AM-RTP-7PMPE-TD07	Slotted Nut
2	AM-RTP-7PMPE-TD02	Bearing	8	AM-RTP-7PMPE-TD08	Split Pin
3	AM-RTP-7PMPE-TD03	Bearing	9	AM-RTP-7PMPE-TD09	O Ring
4	AM-RTP-7PMPE-TD04	Driven Umbrella Gear I (28 Teeth)	10	AM-RTP-7PMPE-TD10	Bottom Cover
5	AM-RTP-7PMPE-TD05	Flat Washer	11	AM-RTP-7PMPE-TD11	Bolt With Reel
6	AM-RTP-7PMPE-TD06	Spring Washer			

WALKING CASE COMPLETE - E



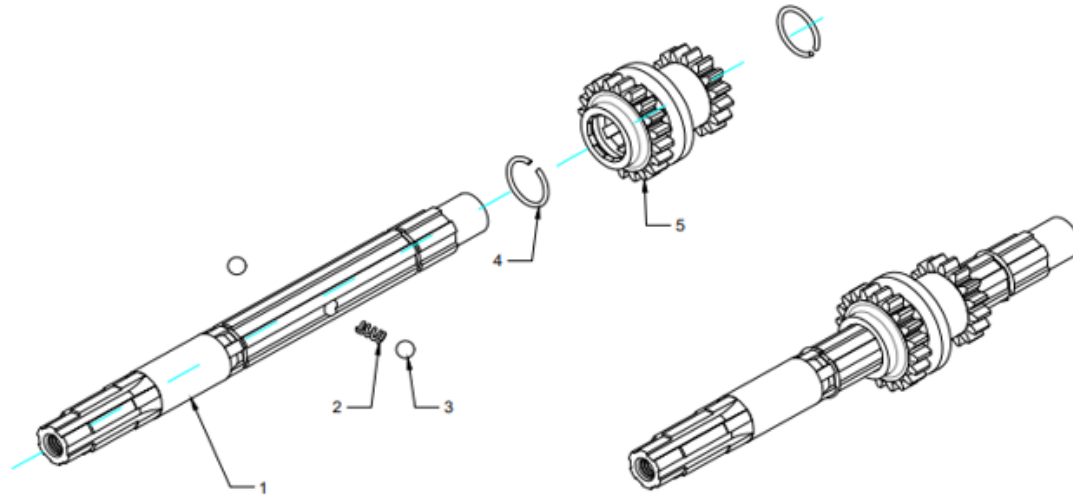
SL NO	PART NO	DESCRIPTION	SL NO	PART NO	DESCRIPTION
1	AM-RTP-7PMPE-TE01	Hex Axle Spacer	7	AM-RTP-7PMPE-TE07	Side Cover
2	AM-RTP-7PMPE-TE02	Adjusting Washer	8	AM-RTP-7PMPE-TE08	Flat Washer
3	AM-RTP-7PMPE-TE03	Paper Gasket, Side Cover	9	AM-RTP-7PMPE-TE09	Spring Washer
4	AM-RTP-7PMPE-TE04	Driven Umbrella Gear (23 Teeth)	10	AM-RTP-7PMPE-TE10	Slotted Nut
5	AM-RTP-7PMPE-TE05	Hex Axle	11	AM-RTP-7PMPE-TE11	Oil Seal
6	AM-RTP-7PMPE-TE06	Bearing	12	AM-RTP-7PMPE-TE12	Anti-Dust Cover

BEVEL GEAR SET - F



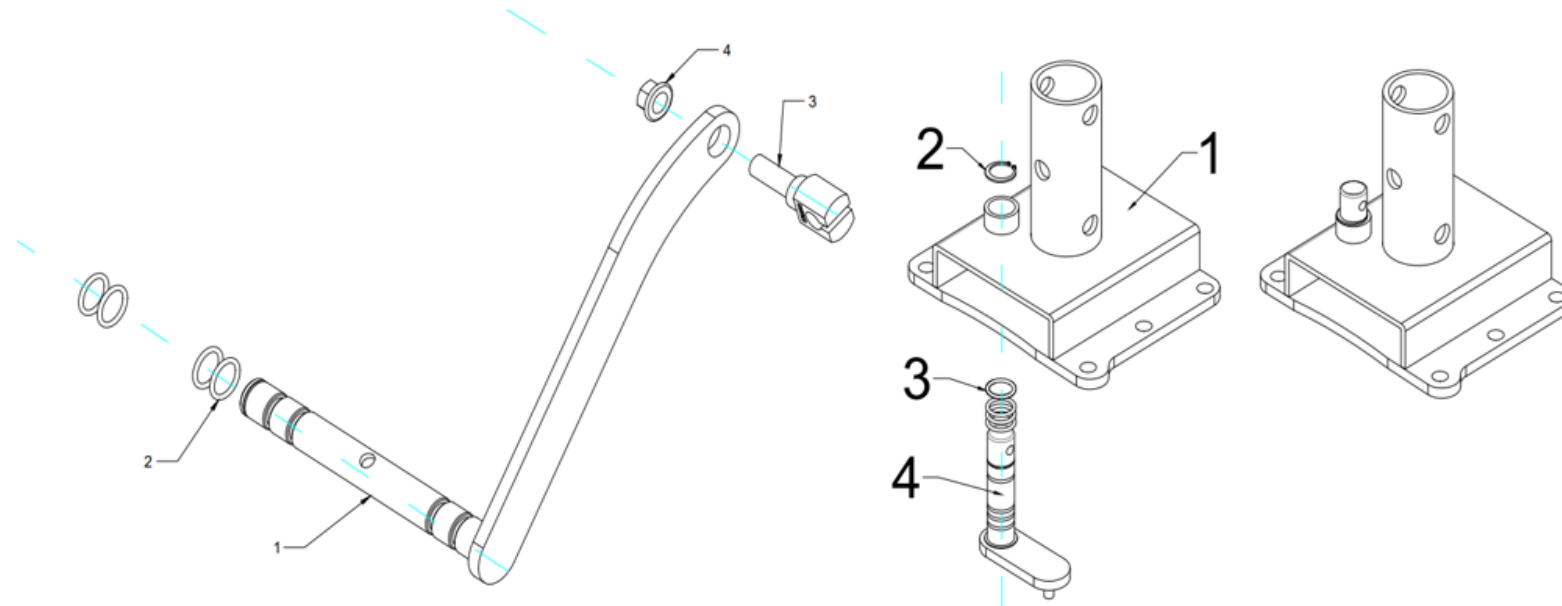
SL NO	PART NO	DESCRIPTION
1	AM-RTP-7PMPE-TF01	Driving Umbrella Gear I (9Teeth)
2	AM-RTP-7PMPE-TF02	Bearing Inner Sleeve

SHAFT ASSY - G



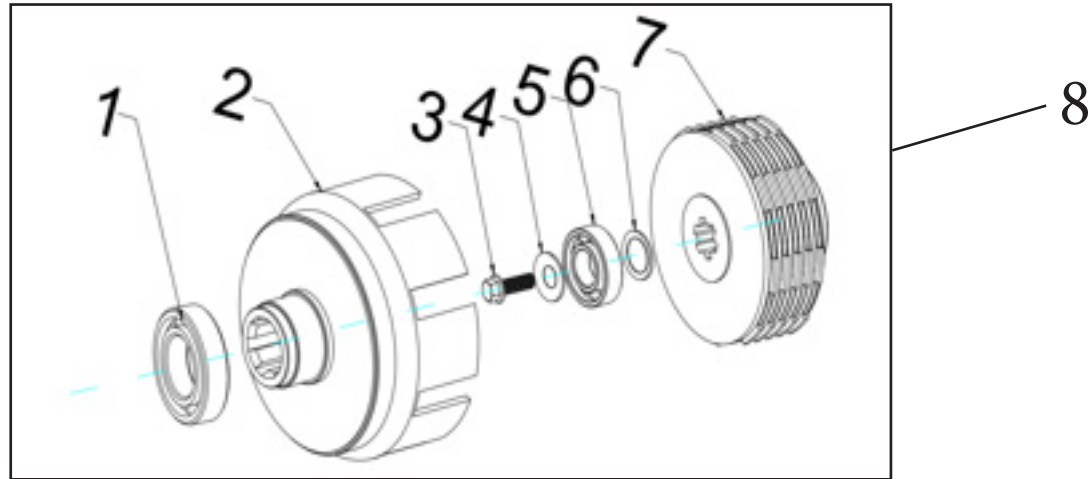
SL NO	PART NO	DESCRIPTION
1	AM-RTP-7PMPE-TG01	Main shaft
2	AM-RTP-7PMPE-TG02	small spring
3	AM-RTP-7PMPE-TG03	steel ball
4	AM-RTP-7PMPE-TG04	circlip
5	AM-RTP-7PMPE-TG05	Gear

CLUTCH FORK ASSY - H



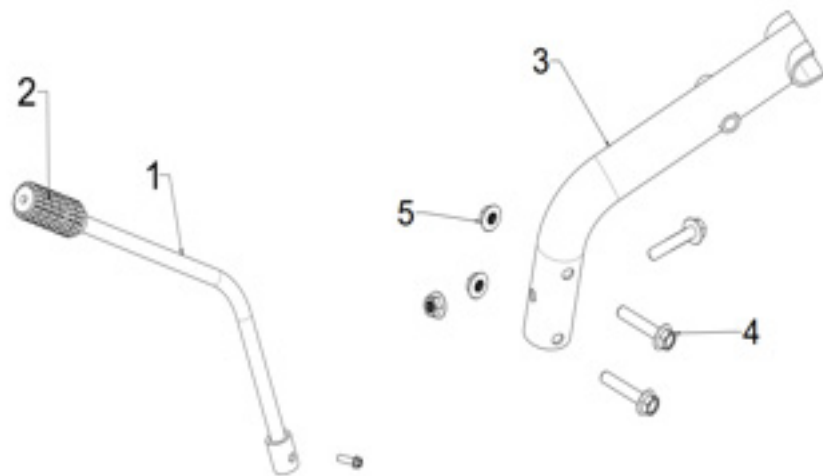
SL NO	PART NO	DESCRIPTION
1	AM-RTP-7PMPE-TH01	Clutch fork shaft
2	AM-RTP-7PMPE-TH02	O ring
3	AM-RTP-7PMPE-TH03	Clutch cable seat
4	AM-RTP-7PMPE-TH04	Slotted nut

CLUTCH ASSY - J



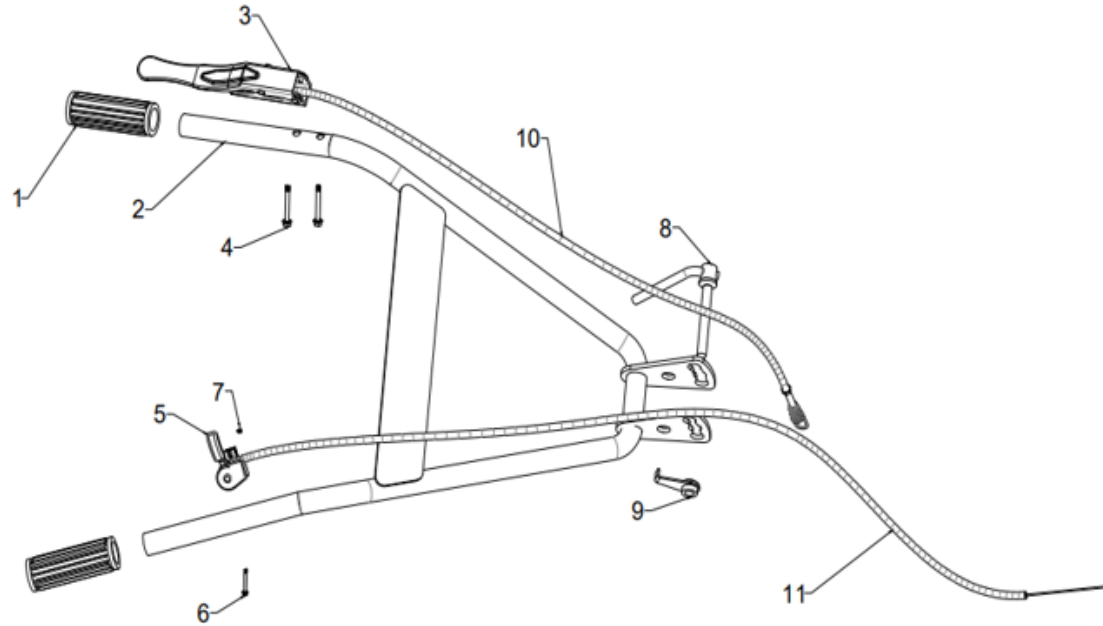
SL NO	PART NO	DESCRIPTION
1	AM-RTP-7PMPE-TJ01	Bearing
2	AM-RTP-7PMPE-TJ02	Clutch Cover(8 Teetch)
3	AM-RTP-7PMPE-TJ03	Bolt With Reel
4	AM-RTP-7PMPE-TJ04	Flat Washer
5	AM-RTP-7PMPE-TJ05	Bearing
6	AM-RTP-7PMPE-TJ06	wear pad
7	AM-RTP-7PMPE-TJ07	Clutch Core
8	AM-RTP-7PMPE-TJ08	complete Clutch Assy

HANDLE GEAR LEVEL ASSY - K



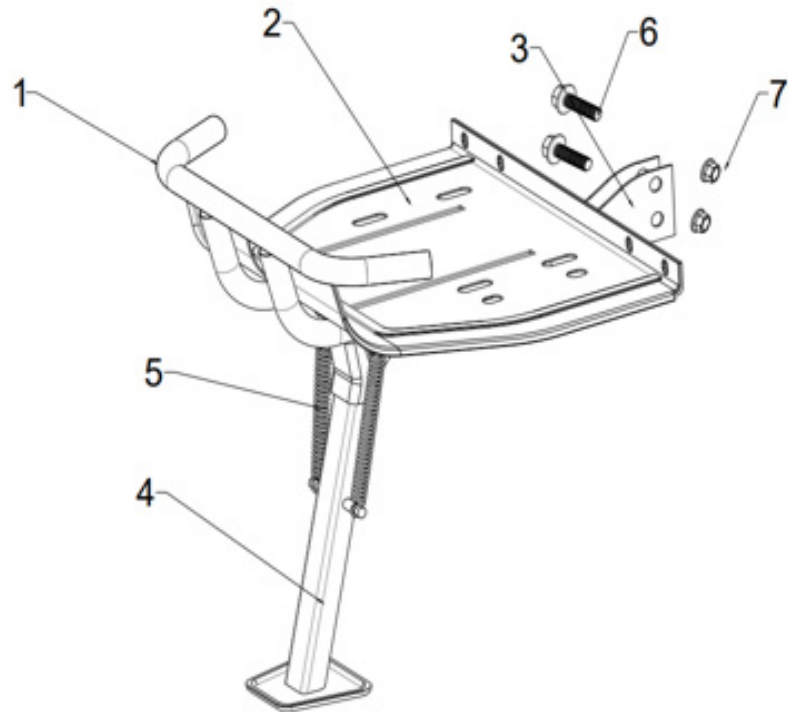
SL NO	PART NO	DESCRIPTION
1	AM-RTP-7PMPE-TK01	Gear Shifting Lever
2	AM-RTP-7PMPE-TK02	Ruber Grip
3	AM-RTP-7PMPE-TK03	Handle Middle Part
4	AM-RTP-7PMPE-TK04	Hexagon Socket Bolt
5	AM-RTP-7PMPE-TK05	Nut

HANDLE ASSY - L



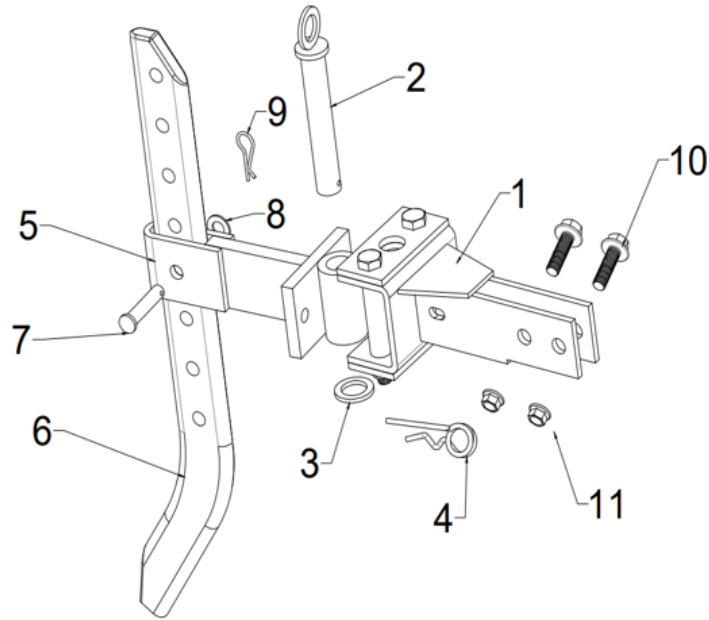
SL NO	RIPL CODE	DESCRIPTION	SL NO	RIPL CODE	DESCRIPTION
1	AM-RTP-7PMPE-TL01	Rubber Grip	7	AM-RTP-7PMPE-TL07	M5 Hex Head Nut
2	AM-RTP-7PMPE-TL02	Handle	8	AM-RTP-7PMPE-TL08	Locking Bolt
3	AM-RTP-7PMPE-TL03	Clutch Handle	9	AM-RTP-7PMPE-TL09	Adjusting Nut
4	AM-RTP-7PMPE-TL04	Bolt With Reel	10	AM-RTP-7PMPE-TL10	Clutch Cable
5	AM-RTP-7PMPE-TL05	Accelarator Switch	11	AM-RTP-7PMPE-TL11	Fuel Cable
6	AM-RTP-7PMPE-TL06	M5 Round Head Bolt			

BUMPER ASSY - M



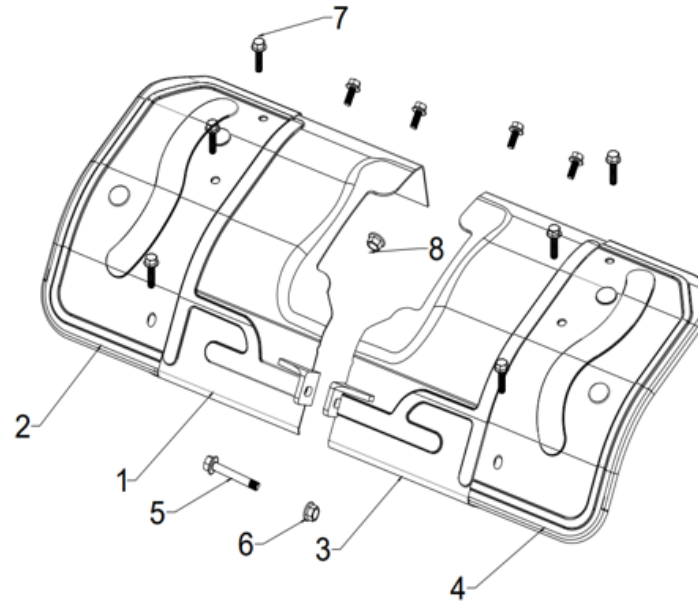
SL NO	RIPL CODE	DESCRIPTION
1	AM-RTP-7PMPE-TM01	Bumper
2	AM-RTP-7PMPE-TM02	Engine Protetion Plate
3	AM-RTP-7PMPE-TM03	Connecting Block
4	AM-RTP-7PMPE-TM04	Front Stand
5	AM-RTP-7PMPE-TM05	Spring
6	AM-RTP-7PMPE-TM06	Hex Bolt
7	AM-RTP-7PMPE-TM07	Nut With Reel

CONNECTING FRAME ASSY - N



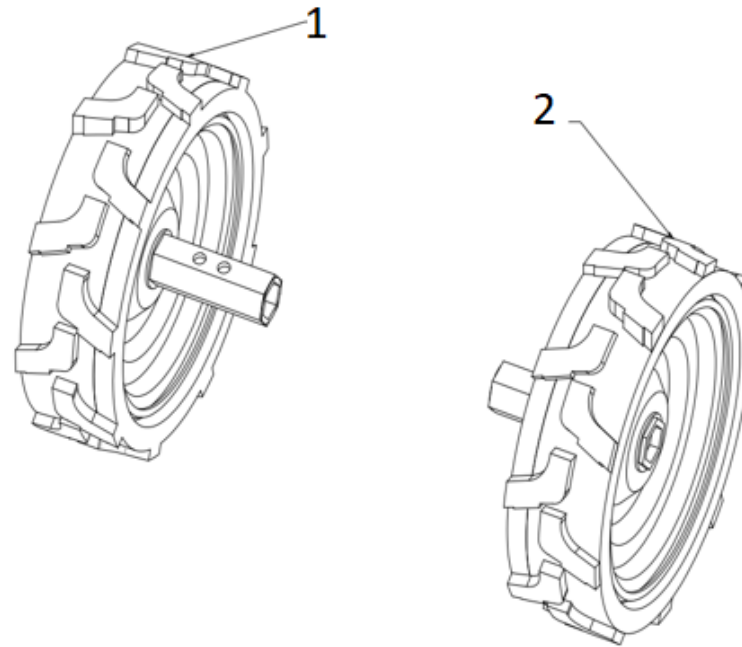
SL NO	RIPL CODE	DESCRIPTION
1	AM-RTP-7PMPE-TN01	Trailer Body
2	AM-RTP-7PMPE-TN02	Connector Pin
3	AM-RTP-7PMPE-TN03	Flat Washer
4	AM-RTP-7PMPE-TN04	R Pin
5	AM-RTP-7PMPE-TN05	Connector
6	AM-RTP-7PMPE-TN06	Resistance Blade
7	AM-RTP-7PMPE-TN07	Pin For Resistance Blade
8	AM-RTP-7PMPE-TN08	Flat Wahser
9	AM-RTP-7PMPE-TN09	R Pin
10	AM-RTP-7PMPE-TN10	Hex Bolt
11	AM-RTP-7PMPE-TN11	Nut With Reel

FENDER ASSY - P



SL NO	RIPL CODE	DESCRIPTION	SL NO	RIPL CODE	DESCRIPTION
1	AM-RTP-7PMPE-TP01	Left Inner Fender	5	AM-RTP-7PMPE-TP05	Bolt With Reel
2	AM-RTP-7PMPE-TP02	Left Outer Fender	6	AM-RTP-7PMPE-TP06	Bolt With Reel
3	AM-RTP-7PMPE-TP03	Right Inner Fender	7	AM-RTP-7PMPE-TP07	Bolt With Reel
4	AM-RTP-7PMPE-TP04	Right Outer Fender	8	AM-RTP-7PMPE-TP08	Nut With Reel






WHEELS - Q



SL NO	RIPL CODE	DESCRIPTION
1	AM-RTP-7PMPE-TQ01	Left Solid Rubber
2	AM-RTP-7PMPE-TQ02	Right Solid Rubber






WARRANTY CARD

CUSTOMER COPY

DATE _____	DATE OF DELIVERY _____	DEALERS OFFICIAL SEAL	DEALERS SIGN _____
PURCHASERS NAME & ADDRESS _____ _____	 CUSTOMER SIGN		
PRODUCT NAME	PRODUCT SERIAL NO.	INVOICE/DN NO.	
			






I/Will accept the terms and conditions of warranty as in the warranty card

DEALERS COPY

DATE _____	DATE OF DELIVERY _____	DEALERS OFFICIAL SEAL	DEALERS SIGN _____
PURCHASERS NAME & ADDRESS _____ _____	 CUSTOMER SIGN		
PRODUCT NAME	PRODUCT SERIAL NO.	INVOICE/DN NO.	
			

I/Will accept the terms and conditions of warranty as in the warranty card

COMPANY COPY

DATE _____	DATE OF DELIVERY _____	DEALERS OFFICIAL SEAL	DEALERS SIGN _____
PURCHASERS NAME & ADDRESS _____ _____	 CUSTOMER SIGN		
PRODUCT NAME	PRODUCT SERIAL NO.	INVOICE/DN NO.	
			

I/Will accept the terms and conditions of warranty as in the warranty card

1. LIMITED WARRANTY PERIOD : For a period of six months from the date of Sale / delivery of the product which ever is earlier. 2. LIMITED WARRANTY OBLIGATION : Replacement of defective part(s) by authorized dealer are free of charges. If found defective by reasons of defective material / poor workmanship, parts will be replaced and there will be no value re-imburement. 3. TERMS & CONDITIONS : a. Claims under warranty will be accepted on submission of Warranty Card duly filled and stamped by authorized dealer together with the original purchase document. : b. Shipping / transportation / Incidental charges incurred in replacing defective parts under warranty shall be borne by the purchaser

WARRANTY null & void if

- (i) Lack of maintenance, (ii) Incorrect use of the machine or tampering, (iii) Use of non-genuine spare parts, (iv) Usage of acids, solvents, or any flammable materials, (v) Non-usage of filter water / clear water / soft water & using water above 40°C temperature, (vi) While using the pressure washers to draw water which is contaminated with dust & solvents (eg. paint thinners, gasoline, oil, etc.), (vii) Repair done by unauthorized service people, (viii) Those parts subject to wear & tear due to normal operations and plastic parts, rubber items etc, (ix) Loose connections, faulty electrical fixtures & fluctuations in power supply.
- 4. Should any failure occur during or after the warranty period, customer does not have the right to interrupt payment / price discount.
- 5. Incidental or consequential damages like inconvenience commercial loss, loss of tie, mental agony etc.
- 6. Loss of any nature due to operation or non-operation is not covered under warranty.
- 7. All free service are at Dealer's service point only.
- 8. Warranty ceases if service is not done periodically.
- 9. The attached card should be completed and returned to Ratnagiri Impex Pvt. Ltd. for registration immediately after sale / delivery.
- 10. The warranty is void unless you register the warranty card with Ratnagiri Impex Pvt. Ltd.
- 11. The decision of Ratnagiri Impex Pvt. Ltd., in settling the warranty is final in all respects.
- 12. All disputes are subject to Bangalore Courts Jurisdiction

1. LIMITED WARRANTY PERIOD : For a period of six months from the date of Sale / delivery of the product which ever is earlier. 2. LIMITED WARRANTY OBLIGATION : Replacement of defective part(s) by authorized dealer are free of charges. If found defective by reasons of defective material / poor workmanship, parts will be replaced and there will be no value re-imburement. 3. TERMS & CONDITIONS : a. Claims under warranty will be accepted on submission of Warranty Card duly filled and stamped by authorized dealer together with the original purchase document. : b. Shipping / transportation / Incidental charges incurred in replacing defective parts under warranty shall be borne by the purchaser.

WARRANTY null & void if

- (i) Lack of maintenance, (ii) Incorrect use of the machine or tampering, (iii) Use of non-genuine spare parts, (iv) Usage of acids, solvents, or any flammable materials, (v) Non-usage of filter water / clear water / soft water & using water above 40°C temperature, (vi) While using the pressure washers to draw water which is contaminated with dust & solvents (eg. paint thinners, gasoline, oil, etc.), (vii) Repair done by unauthorized service people, (viii) Those parts subject to wear & tear due to normal operations and plastic parts, rubber items etc, (ix) Loose connections, faulty electrical fixtures & fluctuations in power supply.
- 4. Should any failure occur during or after the warranty period, customer does not have the right to interrupt payment / price discount.
- 5. Incidental or consequential damages like inconvenience commercial loss, loss of tie, mental agony etc.
- 6. Loss of any nature due to operation or non-operation is not covered under warranty.
- 7. All free service are at Dealer's service point only.
- 8. Warranty ceases if service is not done periodically.
- 9. The attached card should be completed and returned to Ratnagiri Impex Pvt. Ltd. for registration immediately after sale / delivery.
- 10. The warranty is void unless you register the warranty card with Ratnagiri Impex Pvt. Ltd.
- 11. The decision of Ratnagiri Impex Pvt. Ltd., in settling the warranty is final in all respects.
- 12. All disputes are subject to Bangalore Courts Jurisdiction

1. LIMITED WARRANTY PERIOD : For a period of six months from the date of Sale / delivery of the product which ever is earlier. 2. LIMITED WARRANTY OBLIGATION : Replacement of defective part(s) by authorized dealer are free of charges. If found defective by reasons of defective material / poor workmanship, parts will be replaced and there will be no value re-imburement. 3. TERMS & CONDITIONS : a. Claims under warranty will be accepted on submission of Warranty Card duly filled and stamped by authorized dealer together with the original purchase document. : b. Shipping / transportation / Incidental charges incurred in replacing defective parts under warranty shall be borne by the purchaser.

WARRANTY null & void if

- (i) Lack of maintenance, (ii) Incorrect use of the machine or tampering, (iii) Use of non-genuine spare parts, (iv) Usage of acids, solvents, or any flammable materials, (v) Non-usage of filter water / clear water / soft water & using water above 40°C temperature, (vi) While using the pressure washers to draw water which is contaminated with dust & solvents (eg. paint thinners, gasoline, oil, etc.), (vii) Repair done by unauthorized service people, (viii) Those parts subject to wear & tear due to normal operations and plastic parts, rubber items etc, (ix) Loose connections, faulty electrical fixtures & fluctuations in power supply.
- 4. Should any failure occur during or after the warranty period, customer does not have the right to interrupt payment / price discount.
- 5. Incidental or consequential damages like inconvenience commercial loss, loss of tie, mental agony etc.
- 6. Loss of any nature due to operation or non-operation is not covered under warranty.
- 7. All free service are at Dealer's service point only.
- 8. Warranty ceases if service is not done periodically.
- 9. The attached card should be completed and returned to Ratnagiri Impex Pvt. Ltd. for registration immediately after sale / delivery.
- 10. The warranty is void unless you register the warranty card with Ratnagiri Impex Pvt. Ltd.
- 11. The decision of Ratnagiri Impex Pvt. Ltd., in settling the warranty is final in all respects.
- 12. All disputes are subject to Bangalore Courts Jurisdiction



FREE SERVICE COUPON (30DAYS/30HRS. WHICHEVER IS EARLIER)

MODEL

SERIAL NUMBER

PDI DATE

SERVICE NO.

PURCHASE BILL NO.

DATE

DEALERS OFFICE SEAL

- 1. Check and test the fuel mixture
- 3. Check , clean and adjust the spark plug
- 5. Check and sparken the cutting tools
- 7. Start and check the noise, vibration, loosen etc..

OPERATIONS

- 2. check and clean the air filter
- 4. Check and adjust the carburetor tuning
- 6. Product familirisation on usage
- 8. Routine maintenance and shortage.

FREE SERVICE COUPON (30DAYS/30HRS. WHICHEVER IS EARLIER)

MODEL

SERIAL NUMBER

PDI DATE

SERVICE NO.

PURCHASE BILL NO.

DATE

DEALERS OFFICE SEAL

- 1. Check and test the fuel mixture
- 3. Check , clean and adjust the spark plug
- 5. Check and sparken the cutting tools
- 7. Start and check the noise, vibration, loosen etc..

OPERATIONS

- 2. check and clean the air filter
- 4. Check and adjust the carburetor tuning
- 6. Product familirisation on usage
- 8. Routine maintenance and shortage.

FREE SERVICE COUPON (30DAYS/30HRS. WHICHEVER IS EARLIER)

MODEL

SERIAL NUMBER

PDI DATE

SERVICE NO.

PURCHASE BILL NO.

DATE

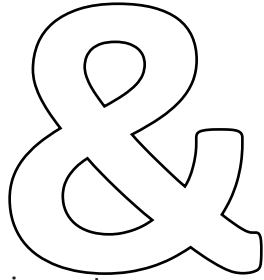
DEALERS OFFICE SEAL

- 1. Check and test the fuel mixture
- 3. Check , clean and adjust the spark plug
- 5. Check and sparken the cutting tools
- 7. Start and check the noise, vibration, loosen etc..

OPERATIONS

- 2. check and clean the air filter
- 4. Check and adjust the carburetor tuning
- 6. Product familirisation on usage
- 8. Routine maintenance and shortage.

DOS



DONT'S

attempting to use the equipments.

1. Always read the instruction manual supplied along with the equipments and understand the correct installation and operating procedures before

trousers and jackets while operating potentially dangerous machines
2. It is important to use the personal protection equipments such as head helmet with visor, ear defenders, goggles, safety gloves, cut resistant shoes,
3. Avoid untrained persons using the equipments. Children must not be allowed to handle these equipments
4. Always use genuine spares and accessories in repairs and usage to derive maximum life of the equipments.
5. Always keep the equipments in good working condition to minimize loss of output as well as to reduce the pollution and save the environment
6. Do not use the machine within range of persons unless they wear protective clothing
7. Do not operate the machine when fatigued or under the influence of alcohol or drugs
8. For more query kindly contact for our Service Center/Dealer/ franchise

NO. 1 CHOICE OF FARMERS SINCE 1999



Marketed by.
**ratnagiri
impex**
BRINGING YOU THE FUTURE... NOW

RATNAGIRI IMPEX PVT., LTD.,

Annapurna House, #1 / 1G, 7th Cross, New
Guddadahalli

Mysore Road, Bangalore - 560 026

Missed Call : 7393 938 938

Email: ask@agrimart.in