

INTERCULTIVATOR/POWER WEEDER AM-RTP-7P CHAMPION

ENGINE DIAGRAM WITH PART LIST



DISCLAIMER : DUE TO CONTANT UPGRADATION FEATURES & SPECIFICATIONS ARE SELECT TO CHANGE WITHOUT NOTICE
BEFORE OPERATING THIS MACHINE PLEASE READ THIS INSTRUCTIONS MANUAL CAREFULLY

INTRODUCTION

Dear Sir/ Madam,

Thank you for choosing Agrimate product. You are the proud owner of high technology & durable machine. Trust that our Franchisee/Dealer installed the product & installed the product and explained you about the usage & service instructions. Please visit our authorised dealer for your future requirement of our other equipments, genuine spares, accessories and services. Service coupons are attached with this manual and you can avail free service to keep your machine fit always to use on demand.

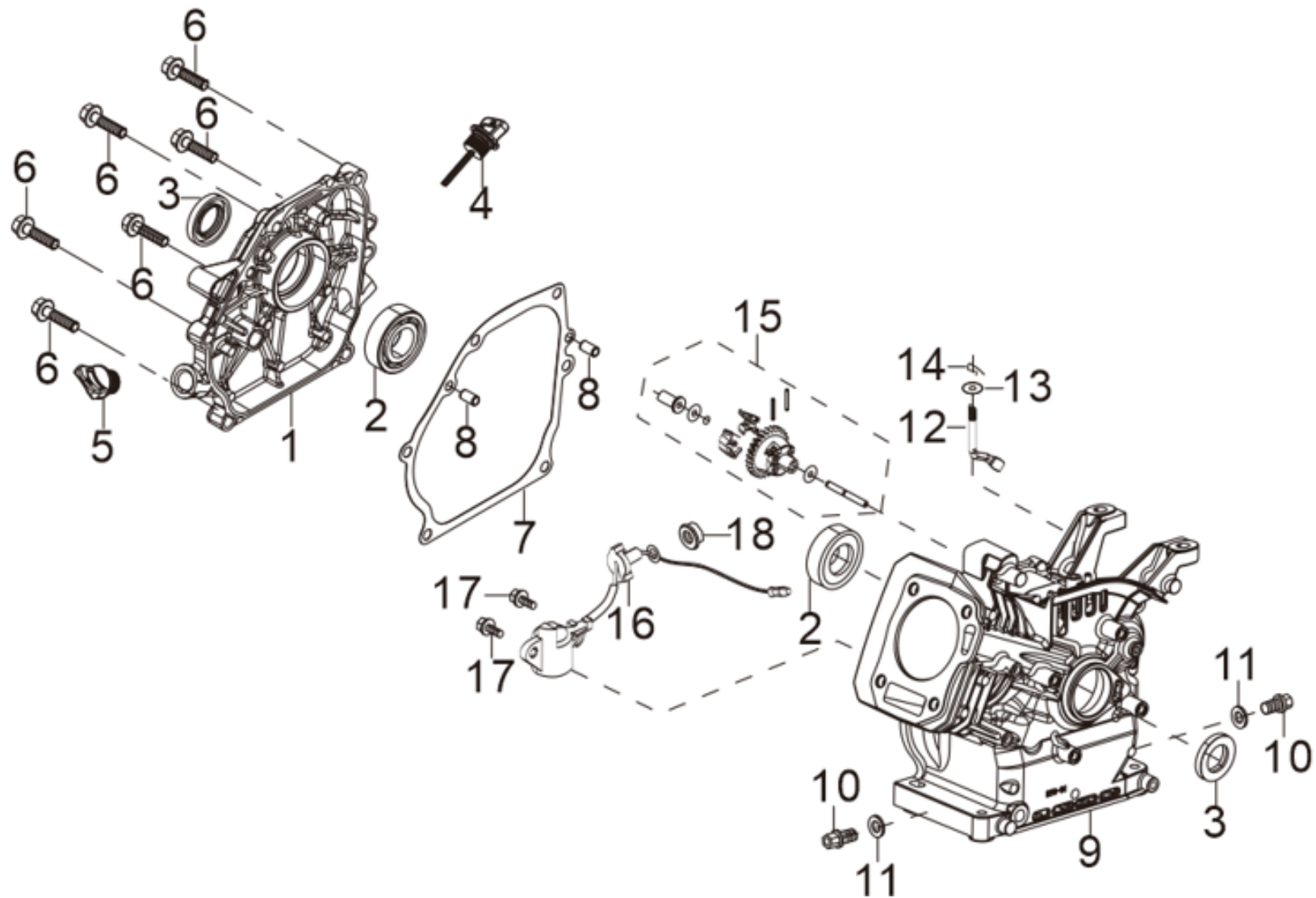
About Ratnagiri,

We import and market of high quality of agriculture wide range of equipments which we are selling through our authorised franchisee or dealer network. We are in this field from past years service the farmer. community. For further details, Please visit our website www.agrimart.in.
& Give a missed call to 7393 938 938.

TECHNICAL PARAMETERS

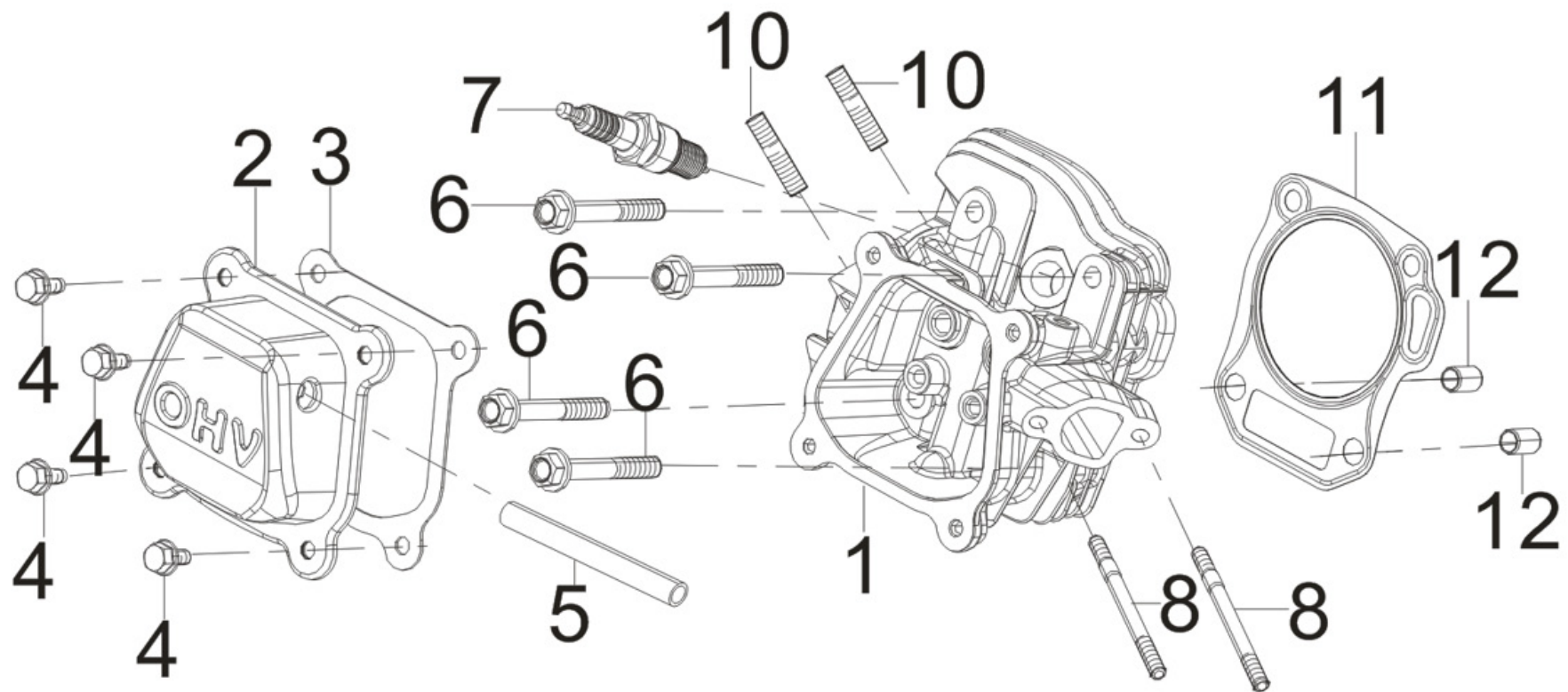
MODEL	AM-RTP-7P CHAMPION
STARTING	RECOIL
DISPLACEMENT	212 CC
FUEL TANK CAPACITY	3.6L
TRANSMISSION OIL CAPACITY	1.7L
GEAR	2 FORWARD + 1 REVERSE
TILLING DEPTH	≥100MM
TILLING DEPTH	850-1100 MM
NW/GROSS	80/90KG

CRANKCASE COVER SUBASSEMBLY-A



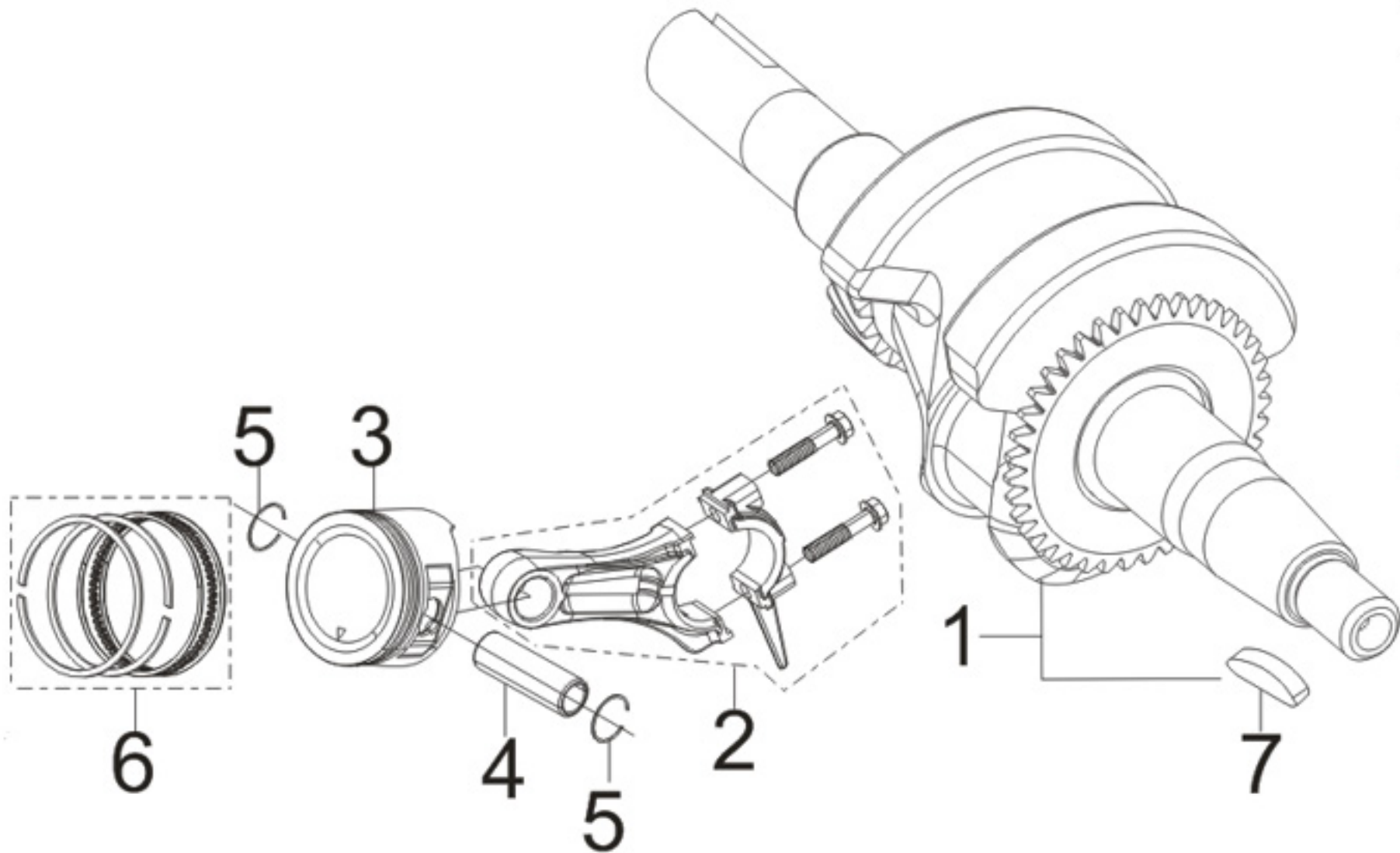
SL NO	PART NO	DESCRIPTION	SL NO	PART NO	DESCRIPTION
1	AM-170FPR-EA01	CRANKCASE COVER	17	AM-170FPR-EA17	BOLT
2	AM-170FPR-EA02	DEEP GROOVE BALL BEARING	18	AM-170FPR-EA18	HEXAGON NUT WITH FLANGE
3	AM-170FPR-EA03	OIL SEAL			
4	AM-170FPR-EA04	OIL DIPSTICK SUBASSEMBLY,			
5	AM-170FPR-EA05	ENGINE OIL PLUG SUBASSEMBLY			
6	AM-170FPR-EA06	HEXAGON SOCKET FLANGE FACE BOLT			
7	AM-170FPR-EA07	CRANKCASE GASKET			
8	AM-170FPR-EA08	POSITION PIN - TYPE A			
9	AM-170FPR-EA09	CRANKCASE SUBASSEMBLY			
10	AM-170FPR-EA10	DRAIN PLUG BOLT			
11	AM-170FPR-EA11	FLAT WASHER			
12	AM-170FPR-EA12	GOVERNOR ARM			
13	AM-170FPR-EA13	FLAT WASHER			
14	AM-170FPR-EA14	COTTER PIN			
15	AM-170FPR-EA15	GOVERNOR GEAR ASSY			
16	AM-170FPR-EA16	ENGINE OIL SENSOR			

HEAD SUBASSEMBLY, CYLINDER / SPARK PLUG - B



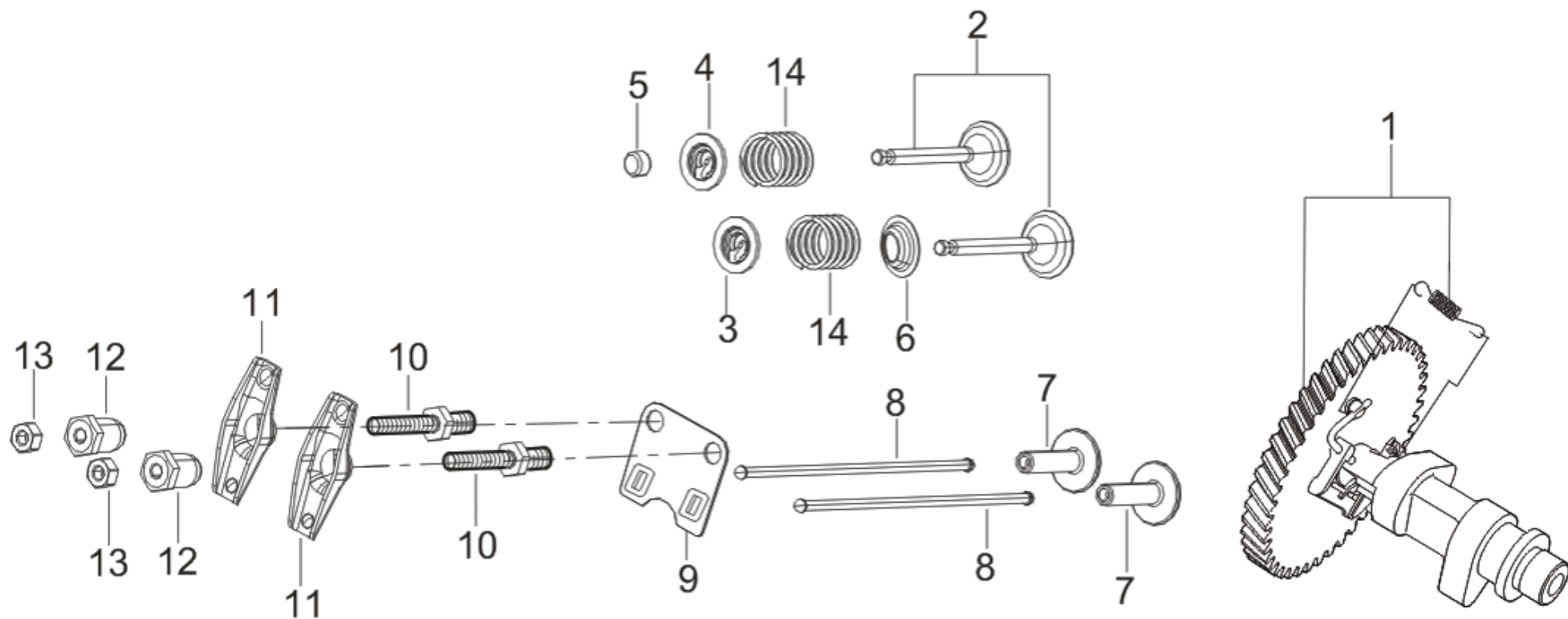
SL NO	PART NO	DESCRIPTION	SL NO	PART NO	DESCRIPTION
1	AM-170FPR-EB01	CYLINDER HEAD SUBASSEMBLY			
2	AM-170FPR-EB02	CYLINDER HEAD COVER SUBASSEMBLY			
3	AM-170FPR-EB03	CYLINDER HEAD COVER GASKET			
4	AM-170FPR-EB04	HEXAGON BOLT			
5	AM-170FPR-EB05	BREATHER TUBE			
6	AM-170FPR-EB06	CYLINDER HEAD BOLT			
7	AM-170FPR-EB07	SPARK PLUG			
8	AM-170FPR-EB08	STUD BOLT			
9	AM-170FPR-EB09	STUD BOLT			
10	AM-170FPR-EB10	CYLINDER HEAD GASKET			
11	AM-170FPR-EB-11	POSITION PIN - TYPE A			
12					
13					
14					
15					
16					

ROD,CRANKSHAFT CONNETING - C



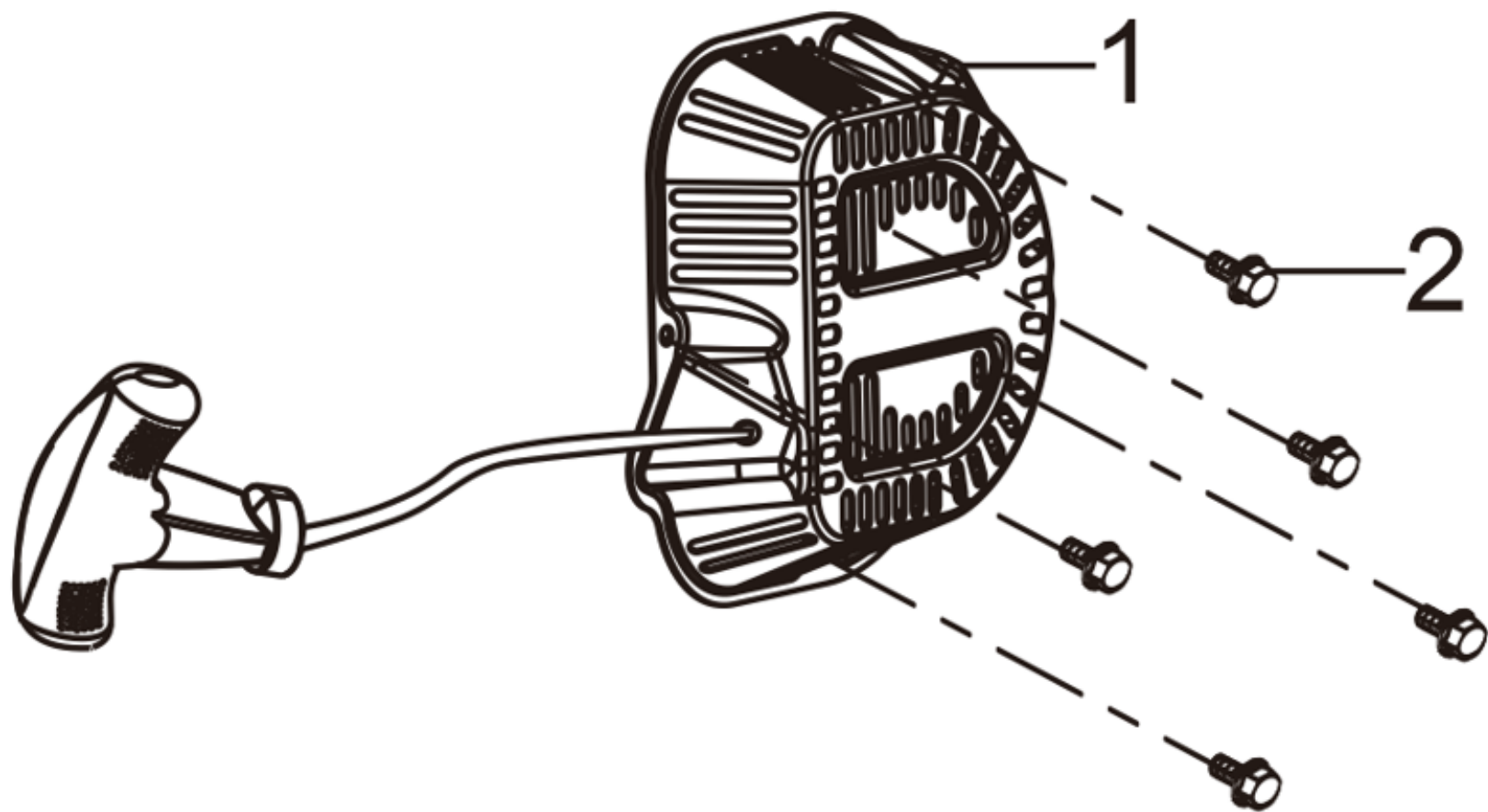
SL NO	PART NO	DESCRIPTION	SL NO	PART NO	DESCRIPTION
1	AM-170FPR-EC01	CRANKSHAFT ASSY			
2	AM-170FPR-EC02	CONNECTING ROD			
3	AM-170FPR-EC03	PISTON			
4	AM-170FPR-EC04	PISTON PIN			
5	AM-170FPR--EC05	PISTON PIN CLIP			
6	AM-170FPR-EC06	PISTON RING ASSY			
7					
8					
9					
10					
11					
12					
13					
14					
15					
16					

TRAIN VALVE / CAMSHAFT SUBASSEMBLY - D



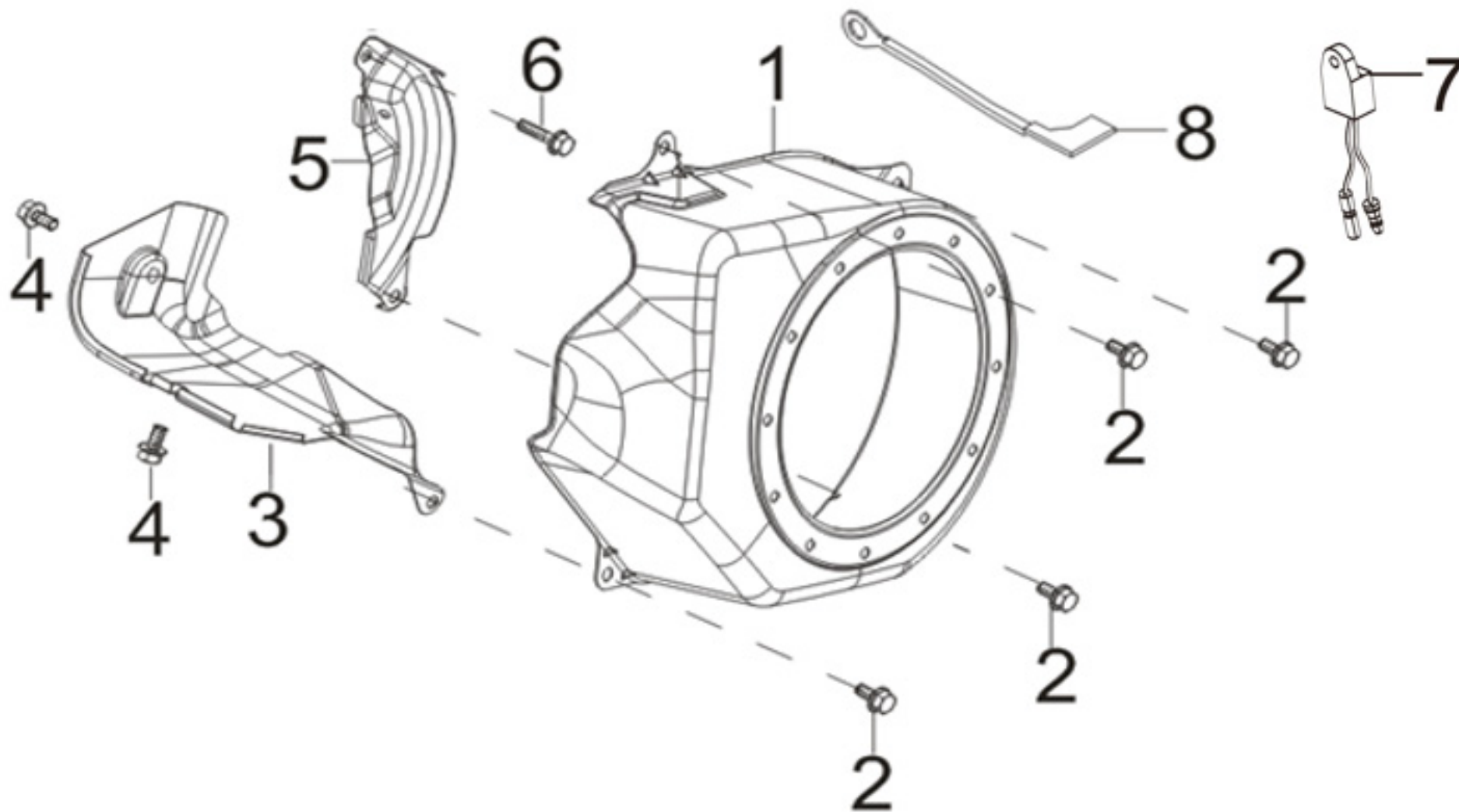
SL NO	PART NO	DESCRIPTION	SL NO	PART NO	DESCRIPTION
1	AM-170FPR-ED01	CAMSHAFT ASSY			
2	AM-170FPR-ED02	VALVES SET			
3	AM-170FPR-ED03	VALVE SPRING SEAT			
4	AM-170FPR-ED04	EXHAUST VALVE RETAINER			
5	AM-170FPR-ED05	VALVE ROTATOR			
6	AM-170FPR-ED06	SEAL GUIDE			
7	AM-170FPR-ED07	VALVE TAPPET			
8	AM-170FPR-ED08	VALVE LIFTER			
9	AM-170FPR-ED09	LIFTER STOPPER PLATE SUBASSEMBLY			
10	AM-170FPR-ED09	ROCKSHAFT BOLT			
11	AM-170FPR-ED10	VALVE ROCKER			
12	AM-170FPR-ED11	VALVE ADJUSTING NUT			
13	AM-170FPR-ED12	VALVE LOCK NUT			
14	AM-170FPR-ED13	VALVE SPRING			
15					
16					

RECOIL STARTER - E



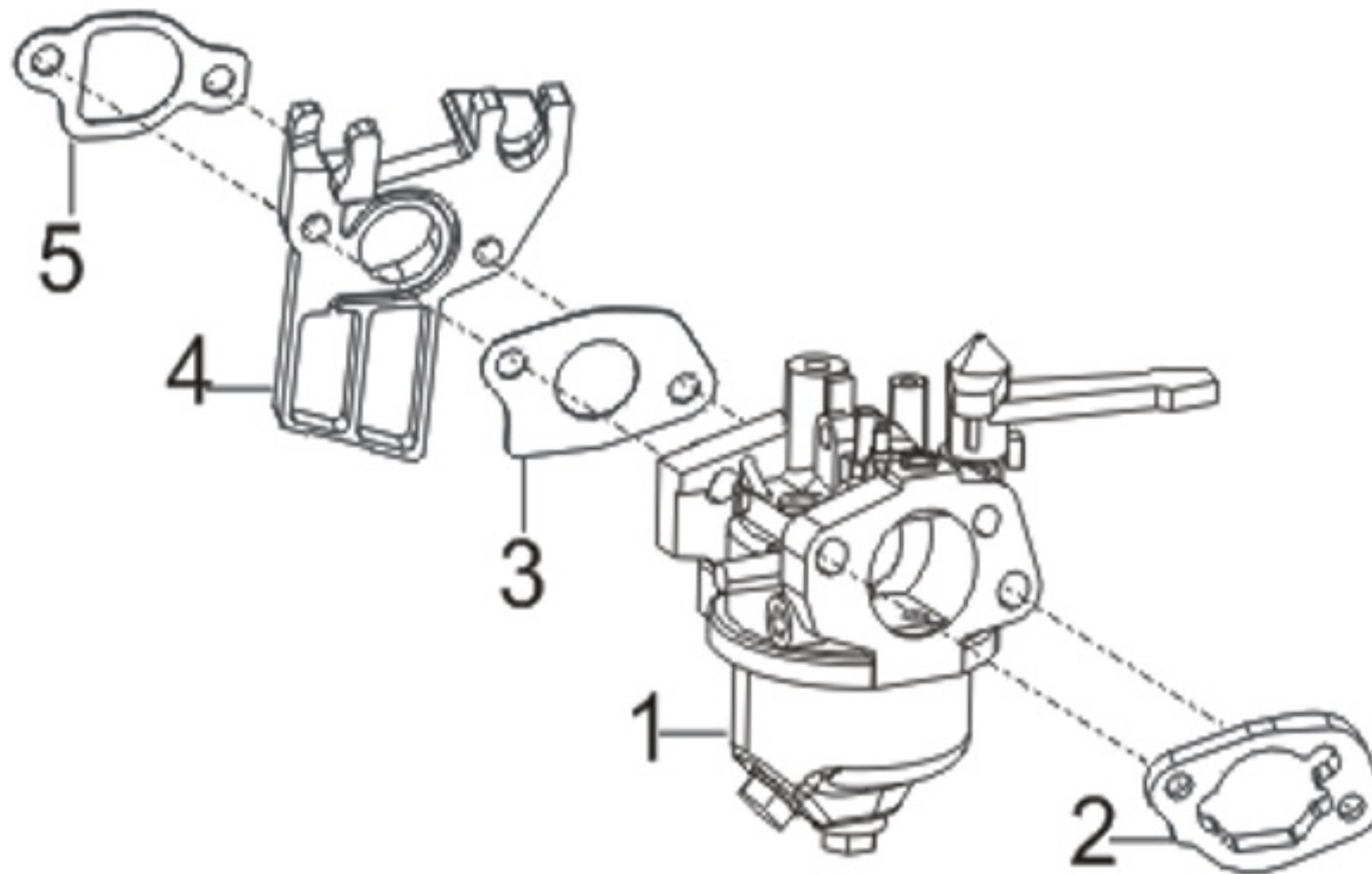
SL NO	PART NO	DESCRIPTION
1	AM-170FPR-EE01	RECOIL STARTER ASSY
2	AM-170FPR-EE02	HEXAGON FACE BOLT

SHROUD / LOWER SHIELD - F



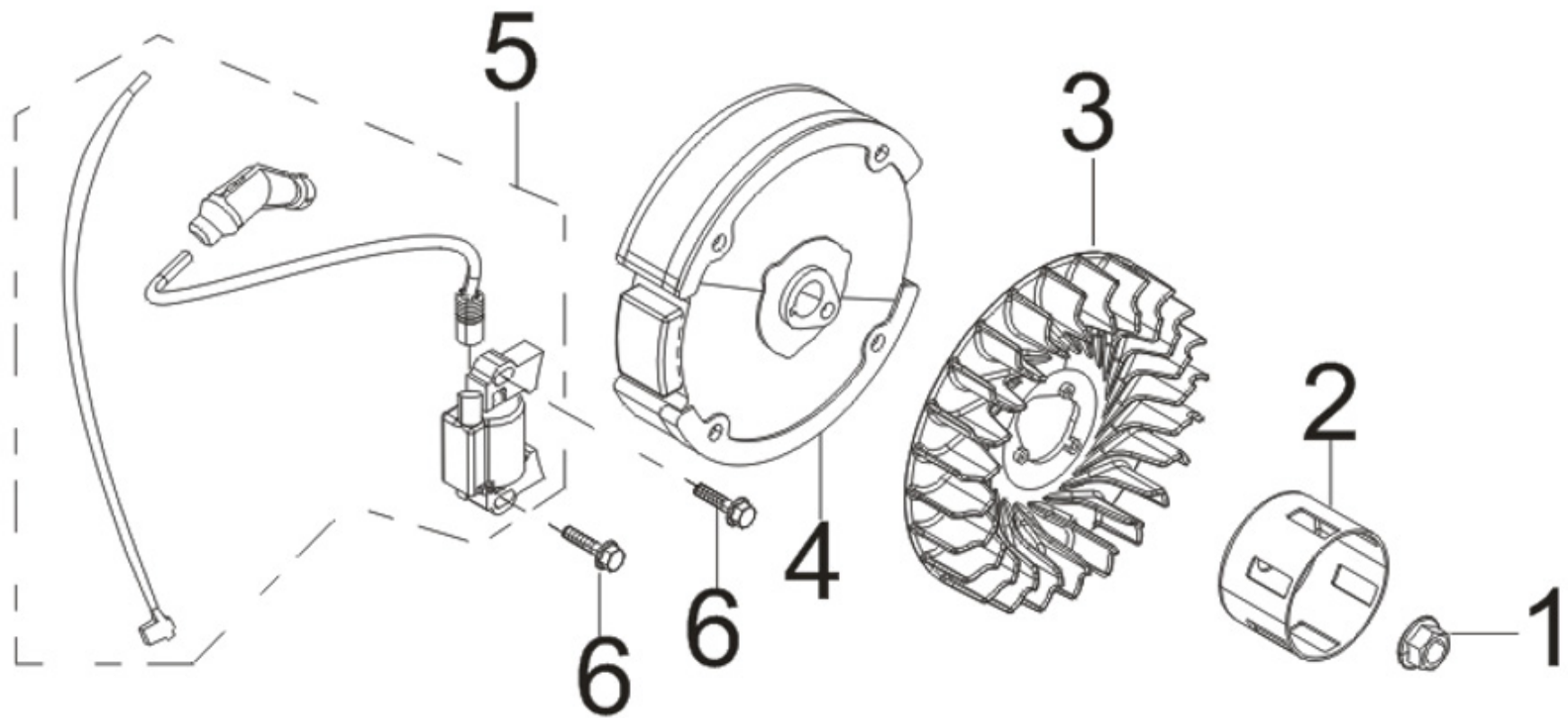
SL NO	PART NO	DESCRIPTION	SL NO	PART NO	DESCRIPTION
1	AM-170FPR-EF01	SHROUD			
2	AM-170FPR-EF02	HEXAGON BOLT			
3	AM-170FPR-EF03	CYLINDER BODY SHROUD			
4	AM-170FPR-EF04	HEXAGON SOCKET BOLT			
5	AM-170FPR-EF05	LOWER SHIELD			
6	AM-170FPR-EF06	BOLT			
7	AM-170FPR-EF07	OIL PROTECTOR			
8	AM-170FPR-EF08	STOP ENGINE SWITCH GROUNDING WIRE			
9					
10					
11					
12					
13					
14					
15					
16					

CARBURETOR ASSY. - G



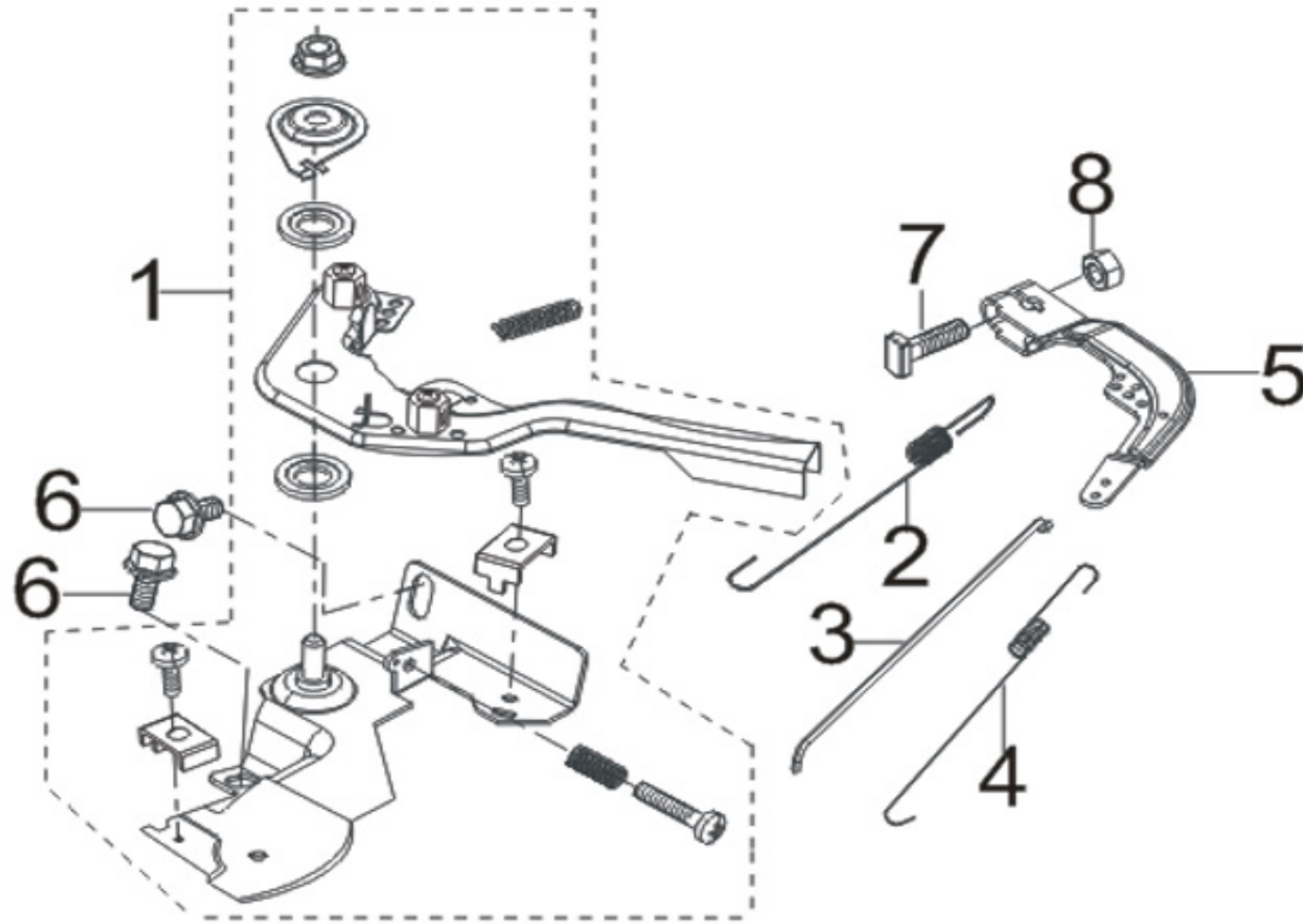
SL NO	PART NO	DESCRIPTION	SL NO	PART NO	DESCRIPTION
1	AM-170FPR-EG01	CARBURETOR ASSY.			
2	AM-170FPR-EF02	AIR CLEANER SEAL GASKET			
3	AM-170FPR-EF03	CARBURETOR SEAL GASKET			
4	AM-170FPR-EF04	CARBURETOR INSULATOR PLATE,			
5	AM-170FPR-EF05	CARBURETOR INSULATOR GASKET			
6					
7					
8					
9					
10					
11					
12					
13					
14					
15					
16					

FLYWHEEL / IMPELLER / STARTER PULLEY / IGNITION COIL - H



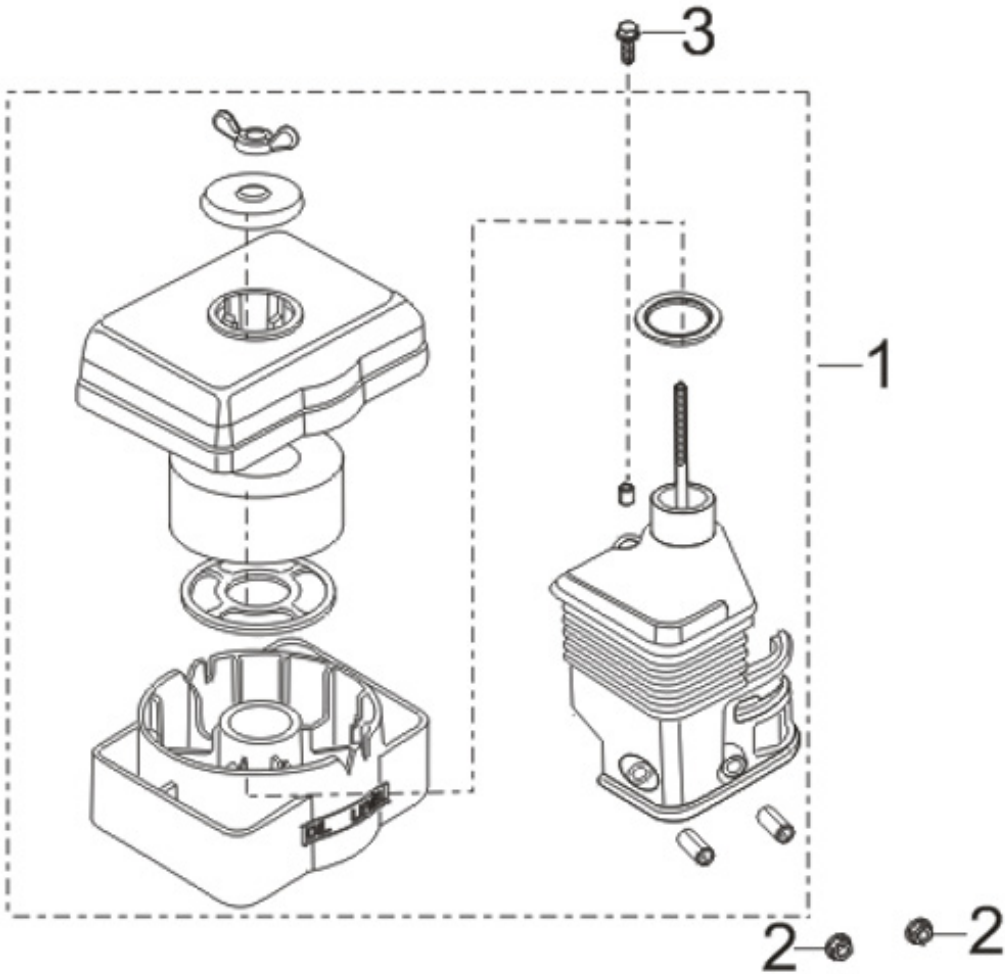
SL NO	PART NO	DESCRIPTION	SL NO	PART NO	DESCRIPTION
1	AM-10FPR-EH01	FLYWHEEL NUT			
2	AM-170FPR-EH02	STARTER PULLEY			
3	AM-170FPR-EH03	IMPELLER			
4	AM-170FPR-EH04	FLYWHEEL SUBASSEMBLY			
5	AM-170FPR-EH05	IGNITION COIL			
6	AM-170FPR-EH06	BOLT			
7					
8					
9					
10					
11					
12					
13					
14					
15					
16					

THROTTLE CONTROL ASSY - J



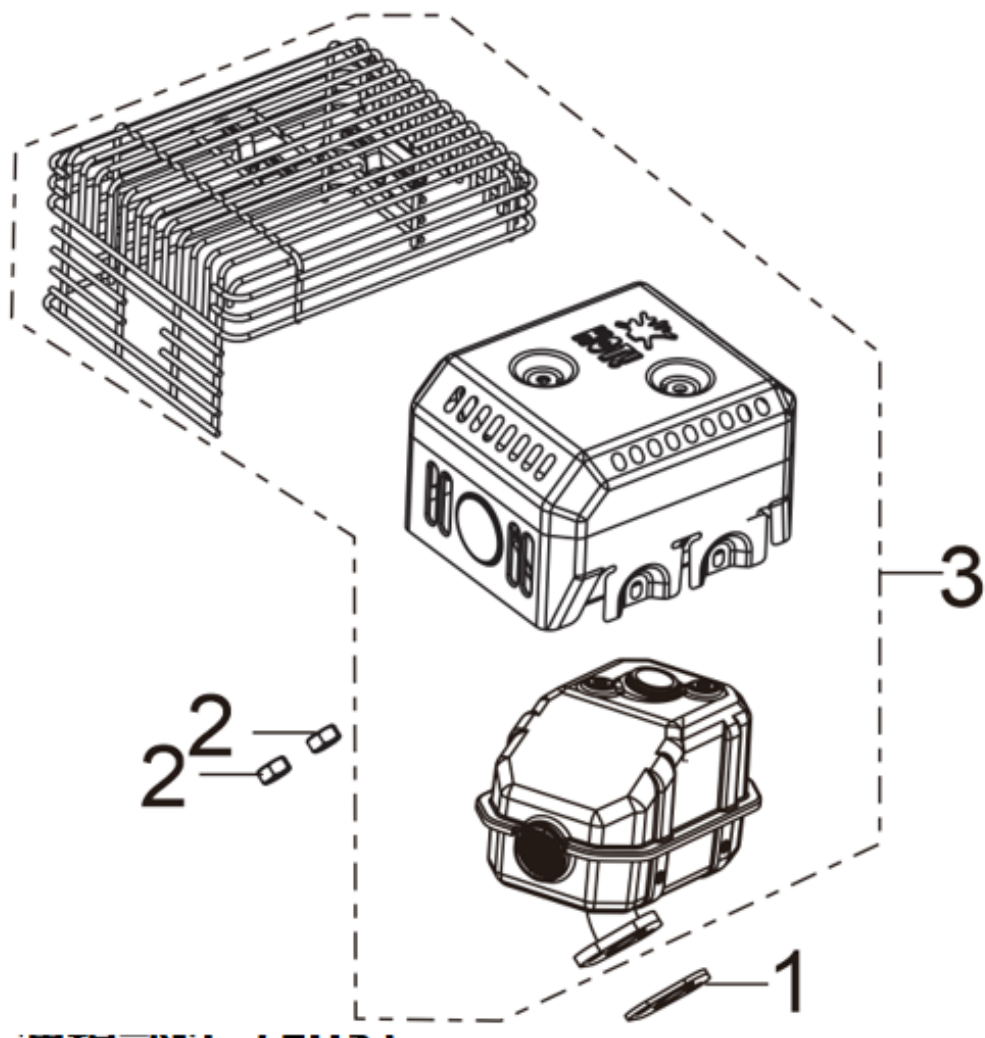
SL NO	PART NO	DESCRIPTION	SL NO	PART NO	DESCRIPTION
1	AM-170FPR-EJ01	THROTTLE CONTROL ASSY			
2	AM-170FPR-EJ02	GOVERNOR SPRING			
3	AM-170FPR-EJ03	GOVERNEOR ROD			
4	AM-170FPR-EJ04	THROTTLE VALVE RETURNING SPRING			
5	AM-170FPR-EJ05	GOVERNOR BRACKET SUBASSEMBLY			
6	AM-170FPR-EJ06	BOLT			
7	AM-170FPR-EJ07	GOVERNOR SUPPORT BOLT			
8	AM-170FPR-EJ08	HEXAGON NUT WITH FLANGE			
9					
10					
11					
12					
13					
14					
15					
16					

AIR CLEANER - K



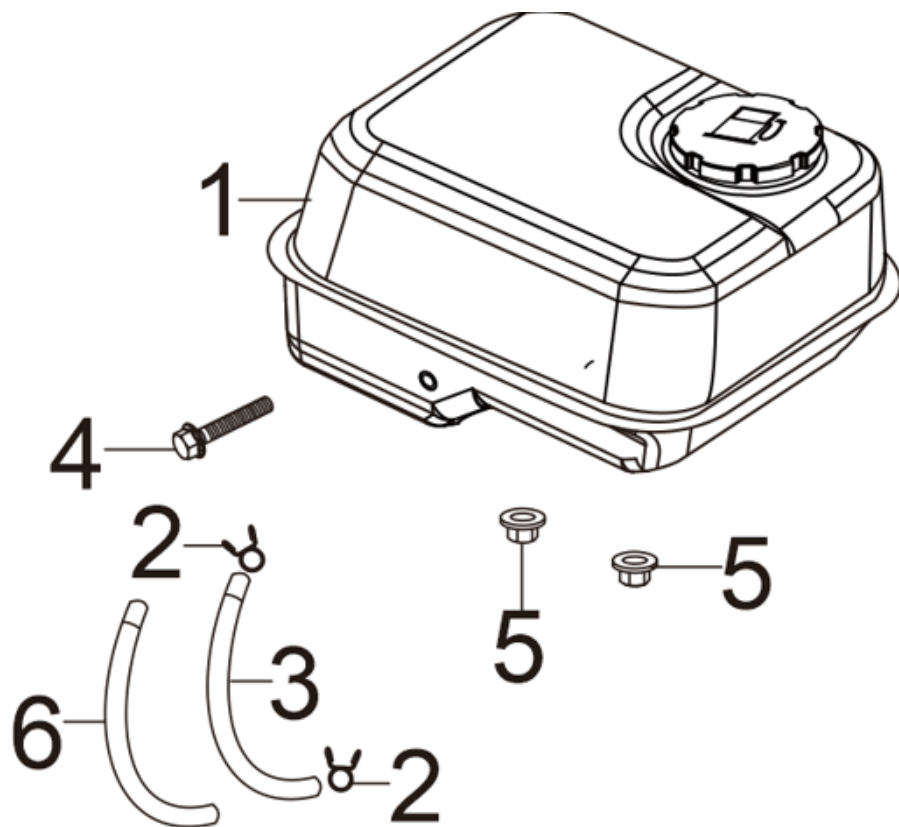
SL NO	PART NO	DESCRIPTION
1	AM-170FPR-EK01	AIR CLEANER
2	AM-170FPR-EK02	HEXAGON NUT WITH FLANGE
3	AM-170FPR-EK03	BOLT
4		
5		
6		
7		
8		
9		
10		
11		
12		
13		
14		
15		
16		

MUFFLER ASSY - L



SL NO	PART NO	DESCRIPTION
1	AM-170FPR-EL01	AIR CLEANER
2	AM-170FPR-EL02	HEXAGON NUT WITH FLANGE
3	AM-170FPR-EL03	BOLT
4		
5		
6		
7		
8		
9		
10		
11		
12		
13		
14		
15		
16		

FUEL TANK ASSY - M



SL NO	PART NO	DESCRIPTION
1	AM-170FPR-EM01	EXHAUST OUTLET GASKET
2	AM-170FPR-EM02	TYPE 1 HEXAGON NUT
3	AM-170FPR-EM03	MUFFLER ASSY.
4		
5		
6		
7		
8		
9		
10		
11		
12		
13		
14		
15		
16		

WARRANTY CARD

CUSTOMER COPY

DATE _____	DATE OF DELIVERY _____	DEALERS OFFICIAL SEAL	DEALERS SIGN _____
PURCHASERS NAME & ADDRESS _____ _____ _____	<div>CUSTOMER SIGN</div>	<div></div>	
PRODUCT NAME	PRODUCT SERIAL NO.	INVOICE/DN NO.	
<div></div>	<div></div>	<div></div>	
I/Will accept the terms and conditions of warranty as in the warranty card			

DEALERS COPY

DATE _____	DATE OF DELIVERY _____	DEALERS OFFICIAL SEAL	DEALERS SIGN _____
PURCHASERS NAME & ADDRESS _____ _____ _____	<div>CUSTOMER SIGN</div>	<div></div>	
PRODUCT NAME	PRODUCT SERIAL NO.	INVOICE/DN NO.	
<div></div>	<div></div>	<div></div>	
I/Will accept the terms and conditions of warranty as in the warranty card			

COMPANY COPY

DATE _____	DATE OF DELIVERY _____	DEALERS OFFICIAL SEAL	DEALERS SIGN _____
PURCHASERS NAME & ADDRESS _____ _____ _____	<div>CUSTOMER SIGN</div>	<div></div>	
PRODUCT NAME	PRODUCT SERIAL NO.	INVOICE/DN NO.	
<div></div>	<div></div>	<div></div>	
I/Will accept the terms and conditions of warranty as in the warranty card			

1. LIMITED WARRANTY PERIOD : For a period of six months from the date of Sale / delivery of the product which ever is earlier. 2. LIMITED WARRANTY OBLIGATION : Replacement of defective part(s) by authorized dealer are free of charges. If found defective by reasons of defective material / poor workmanship, parts will be replaced and there will be no value re-imbursement. 3. TERMS & CONDITIONS : a. Claims under warranty will be accepted on submission of Warranty Card duly filled and stamped by authorized dealer together with the original purchase document. : b. Shipping / transportation / Incidental charges incurred in replacing defective parts under warranty shall be borne by the purchaser

WARRANTY null & void if
(i) Lack of maintenance, (ii) Incorrect use of the machine or tampering, (iii) Use of non-genuine spare parts, (iv) Usage of acids, solvents, or any flammable materials, (v) Non-usage of filter water / clear water / soft water & using water above 40°C temperature, (vi) While using the pressure washers to draw water which is contaminated with dust & solvents (eg. paint thinners, gasoline, oil, etc.), (vii) Repair done by unauthorized service people, (viii) Those parts subject to wear & tear due to normal operations and plastic parts, rubber items etc, (ix) Loose connections, faulty electrical fixtures & fluctuations in power supply.
4. Should any failure occur during or after the warranty period, customer does not have the right to interrupt payment / price discount.
5. Incidental or consequential damages like inconvenience commercial loss, loss of tie, mental agony etc.
6. Loss of any nature due to operation or non-operation is not covered under warranty.
7. All free service are at Dealer's service point only.
8. Warranty ceases if service is not done periodically.
9. The attached card should be completed and returned to Ratnagiri Impex Pvt. Ltd. for registration immediately after sale / delivery.
10. The warranty is void unless you register the warranty card with Ratnagiri Impex Pvt. Ltd.
11. The decision of Ratnagiri Impex Pvt. Ltd., in settling the warranty is final in all respects.
12. All disputes are subject to Bangalore Courts Jurisdiction

1. LIMITED WARRANTY PERIOD : For a period of six months from the date of Sale / delivery of the product which ever is earlier. 2. LIMITED WARRANTY OBLIGATION : Replacement of defective part(s) by authorized dealer are free of charges. If found defective by reasons of defective material / poor workmanship, parts will be replaced and there will be no value re-imbursement. 3. TERMS & CONDITIONS : a. Claims under warranty will be accepted on submission of Warranty Card duly filled and stamped by authorized dealer together with the original purchase document. : b. Shipping / transportation / Incidental charges incurred in replacing defective parts under warranty shall be borne by the purchaser.
WARRANTY null & void if
(i) Lack of maintenance, (ii) Incorrect use of the machine or tampering, (iii) Use of non-genuine spare parts, (iv) Usage of acids, solvents, or any flammable materials, (v) Non-usage of filter water / clear water / soft water & using water above 40°C temperature, (vi) While using the pressure washers to draw water which is contaminated with dust & solvents (eg. paint thinners, gasoline, oil, etc.), (vii) Repair done by unauthorized service people, (viii) Those parts subject to wear & tear due to normal operations and plastic parts, rubber items etc, (ix) Loose connections, faulty electrical fixtures & fluctuations in power supply.
4. Should any failure occur during or after the warranty period, customer does not have the right to interrupt payment / price discount.
5. Incidental or consequential damages like inconvenience commercial loss, loss of tie, mental agony etc.
6. Loss of any nature due to operation or non-operation is not covered under warranty.
7. All free service are at Dealer's service point only.
8. Warranty ceases if service is not done periodically.
9. The attached card should be completed and returned to Ratnagiri Impex Pvt. Ltd. for registration immediately after sale / delivery.
10. The warranty is void unless you register the warranty card with Ratnagiri Impex Pvt. Ltd.
11. The decision of Ratnagiri Impex Pvt. Ltd., in settling the warranty is final in all respects.
12. All disputes are subject to Bangalore Courts Jurisdiction

1. LIMITED WARRANTY PERIOD : For a period of six months from the date of Sale / delivery of the product which ever is earlier. 2. LIMITED WARRANTY OBLIGATION : Replacement of defective part(s) by authorized dealer are free of charges. If found defective by reasons of defective material / poor workmanship, parts will be replaced and there will be no value re-imbursement. 3. TERMS & CONDITIONS : a. Claims under warranty will be accepted on submission of Warranty Card duly filled and stamped by authorized dealer together with the original purchase document. : b. Shipping / transportation / Incidental charges incurred in replacing defective parts under warranty shall be borne by the purchaser.
WARRANTY null & void if
(i) Lack of maintenance, (ii) Incorrect use of the machine or tampering, (iii) Use of non-genuine spare parts, (iv) Usage of acids, solvents, or any flammable materials, (v) Non-usage of filter water / clear water / soft water & using water above 40°C temperature, (vi) While using the pressure washers to draw water which is contaminated with dust & solvents (eg. paint thinners, gasoline, oil, etc.), (vii) Repair done by unauthorized service people, (viii) Those parts subject to wear & tear due to normal operations and plastic parts, rubber items etc, (ix) Loose connections, faulty electrical fixtures & fluctuations in power supply.
4. Should any failure occur during or after the warranty period, customer does not have the right to interrupt payment / price discount.
5. Incidental or consequential damages like inconvenience commercial loss, loss of tie, mental agony etc.
6. Loss of any nature due to operation or non-operation is not covered under warranty.
7. All free service are at Dealer's service point only.
8. Warranty ceases if service is not done periodically.
9. The attached card should be completed and returned to Ratnagiri Impex Pvt. Ltd. for registration immediately after sale / delivery.
10. The warranty is void unless you register the warranty card with Ratnagiri Impex Pvt. Ltd.
11. The decision of Ratnagiri Impex Pvt. Ltd., in settling the warranty is final in all respects.
12. All disputes are subject to Bangalore Courts Jurisdiction

FREE SERVICE COUPON (30DAYS/30HRS. WHICHEVER IS EARLIER)

MODEL

SERIAL NUMBER

PDI DATE

SERVICE NO.

PURCHASE BILL NO.

DATE

DEALERS OFFICE SEAL

1. Check and test the fuel mixture
3. Check , clean and adjust the spark plug
5. Check and sparken the cutting tools
7. Start and check the noise, vibration, loosen etc..

OPERATIONS

2. check and clean the air filter
4. Check and adjust the carburetor tuning
6. Product familiarisation on usage
8. Routine maintenance and shortage.

FREE SERVICE COUPON (30DAYS/30HRS. WHICHEVER IS EARLIER)

MODEL

SERIAL NUMBER

PDI DATE

SERVICE NO.

PURCHASE BILL NO.

DATE

DEALERS OFFICE SEAL

1. Check and test the fuel mixture
3. Check , clean and adjust the spark plug
5. Check and sparken the cutting tools
7. Start and check the noise, vibration, loosen etc..

OPERATIONS

2. check and clean the air filter
4. Check and adjust the carburetor tuning
6. Product familiarisation on usage
8. Routine maintenance and shortage.

FREE SERVICE COUPON (30DAYS/30HRS. WHICHEVER IS EARLIER)

MODEL

SERIAL NUMBER

PDI DATE

SERVICE NO.

PURCHASE BILL NO.

DATE

DEALERS OFFICE SEAL

1. Check and test the fuel mixture
3. Check , clean and adjust the spark plug
5. Check and sparken the cutting tools
7. Start and check the noise, vibration, loosen etc..

OPERATIONS

2. check and clean the air filter
4. Check and adjust the carburetor tuning
6. Product familiarisation on usage
8. Routine maintenance and shortage.

DOS & DONTs

1. Always read the instruction manual supplied along with the equipments and understand the correct installation and operating procedures before attempting to use the equipments.
2. It is important to use the personal protection equipments such as head helmet with visor, ear defenders, goggles, safety gloves, cut resistant shoes, trousers and jackets while operating potentially dangerous machines
3. Avoid untrained persons using the equipments. Children must not be allowed to handle these equipments
4. Always use genuine spares and accessories in repairs and usage to derive maximum life of the equipments.
5. Always keep the equipments in good working condition to minimize loss of output as well as to reduce the pollution and save the environment
6. Do not use the machine within range of persons unless they wear protective clothing
7. Do not operate the machine when fatigued or under the influence of alcohol or drugs
8. When the machine is running, please maintain a constant water supply. Without water circulation will damage the sealing rings of the machine.
9. For more query kindly contact for our Service Center/Dealer/ franchise

Agrimate Army For Pest Control

ANY WHERE - ANY TIME - ANY CROP



Marketed by:

**ratnagiri
impex**

BRINGING YOU THE FUTURE... NOW

RATNAGIRI IMPEX PVT., LTD.,

Annapurna House, #1 / 1G, 7th Cross, New
Guddadahalli

Mysore Road, Bangalore - 560 026

Missed Call : 7393 938 938

Email: ask@agrimart.in