

INTERCULTIVATOR/POWER WEEDER AM-RTP-9P CHAMPION

TRANSMISSION DIGRAM WITH PART LIST



DISCLAIMER : DUE TO CONTANT UPGRADATION FEATURES & SPECIFICATIONS ARE SELECT TO CHANGE WITHOUT NOTICE
BEFORE OPERATING THIS MACHINE PLEASE READ THIS INSTRUCTIONS MANUAL CAREFULLY

INTRODUCTION

Dear Sir/ Madam,

Thank you for choosing Agrimate product. You are the proud owner of high technology & durable machine. Trust that our Franchisee/Dealer installed the product & installed the product and explained you about the usage & service instructions. Please visit our authorised dealer for your future requirement of our other equipments, genuine spares, accessories and services. Service coupons are attached with this manual and you can avail free service to keep your machine fit always to use on demand.

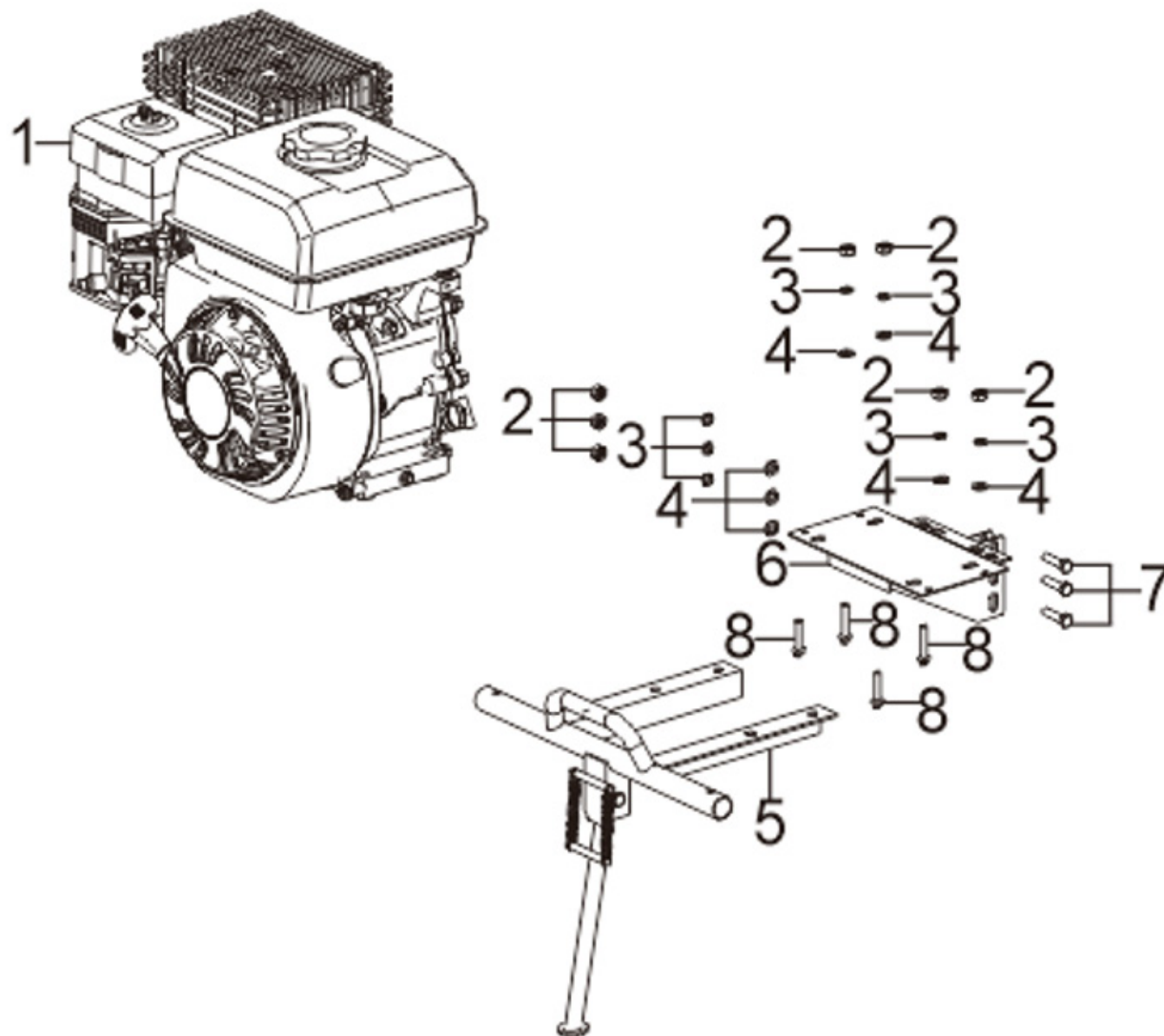
About Ratnagiri,

We import and market of high quality of agriculture wide range of equipments which we are selling through our authorised franchisee or dealer network. We are in this field from past years service the farmer. community. For further details, Please visit our website www.agrimart.in.
& Give a missed call to 7393 938 938.

TECHNICAL PARAMETERS

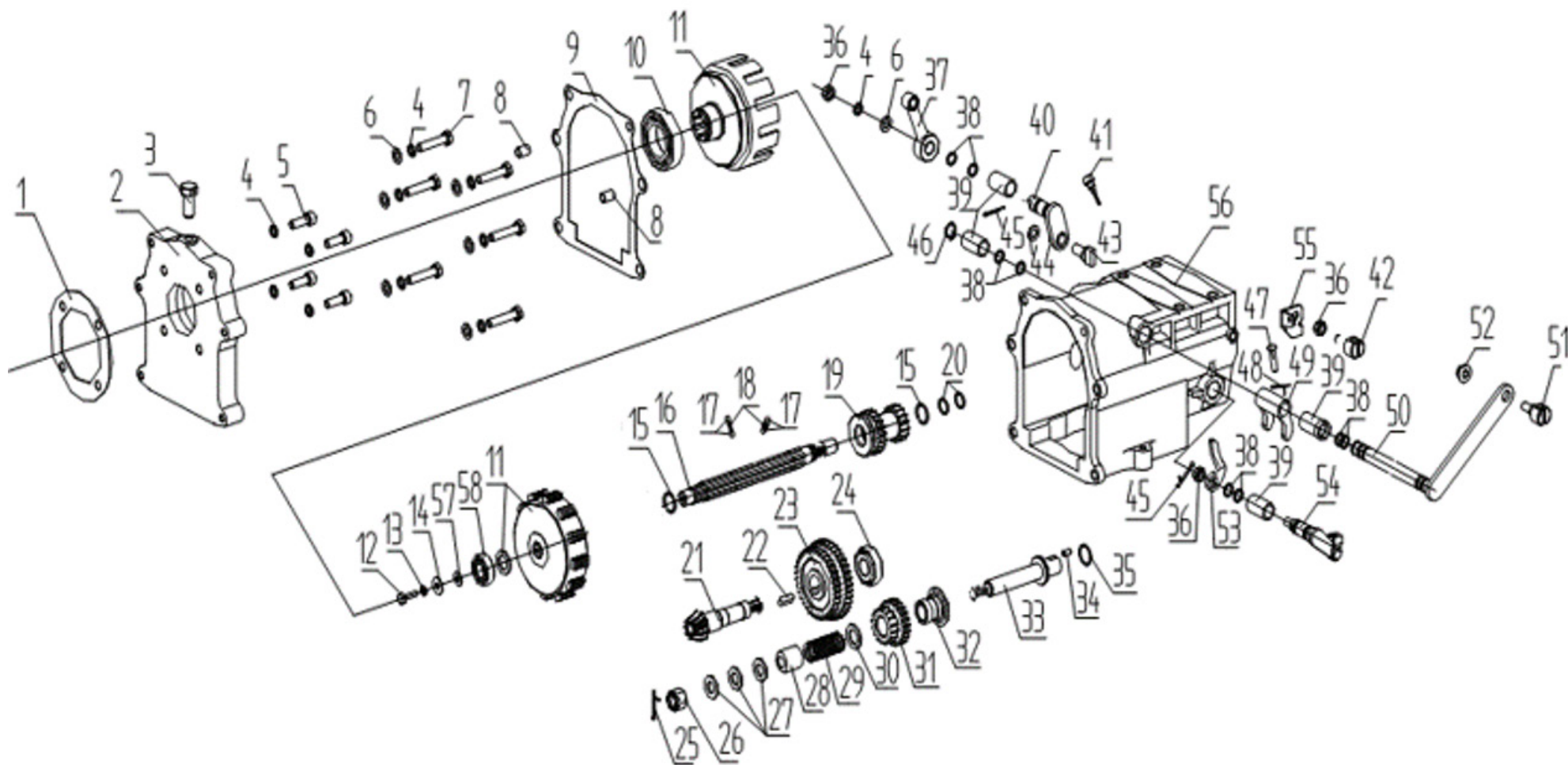
MODEL	AM-RTP-9P CHAMPION
STARTING	RECOIL
MAX. POWER	6/3600(KW/RPM)
DISPLACEMENT	301CC
FUEL TANK CAPACITY	5.4L
ENGINE OIL CAPACITY	1.1L
DRIVING MODEL	GEAR
GEAR	2 FORWARD + 1 REVERSE
TILLING DEPTH	≥100MM
TILLING DEPTH	1100MM
NW	115KG

ENGINE SUPPORT - A



SL NO	PART NO	DESCRIPTION	SL NO	PART NO	DESCRIPTION
1	AM-RTP-9P-TA01	PETROL ENGINE			
2	AM-RTP-9P-TA02	HEXAGON NUT			
3	AM-RTP-9P-TA03	FLAT WASHER			
4	AM-RTP-9P-TA04	FLAT WASHER			
5	AM-RTP-9P-TA05	GUARD			
6	AM-RTP-9P-TA06	ENGINE CONNETING SEAT			
7	AM-RTP-9P-TA07	HEXAGONAL HEAD BOLT			
8	AM-RTP-9P-TA08	HEXAGONAL HEAD BOLT			
9					
10					
11					
12					
13					
14					
15					
16					

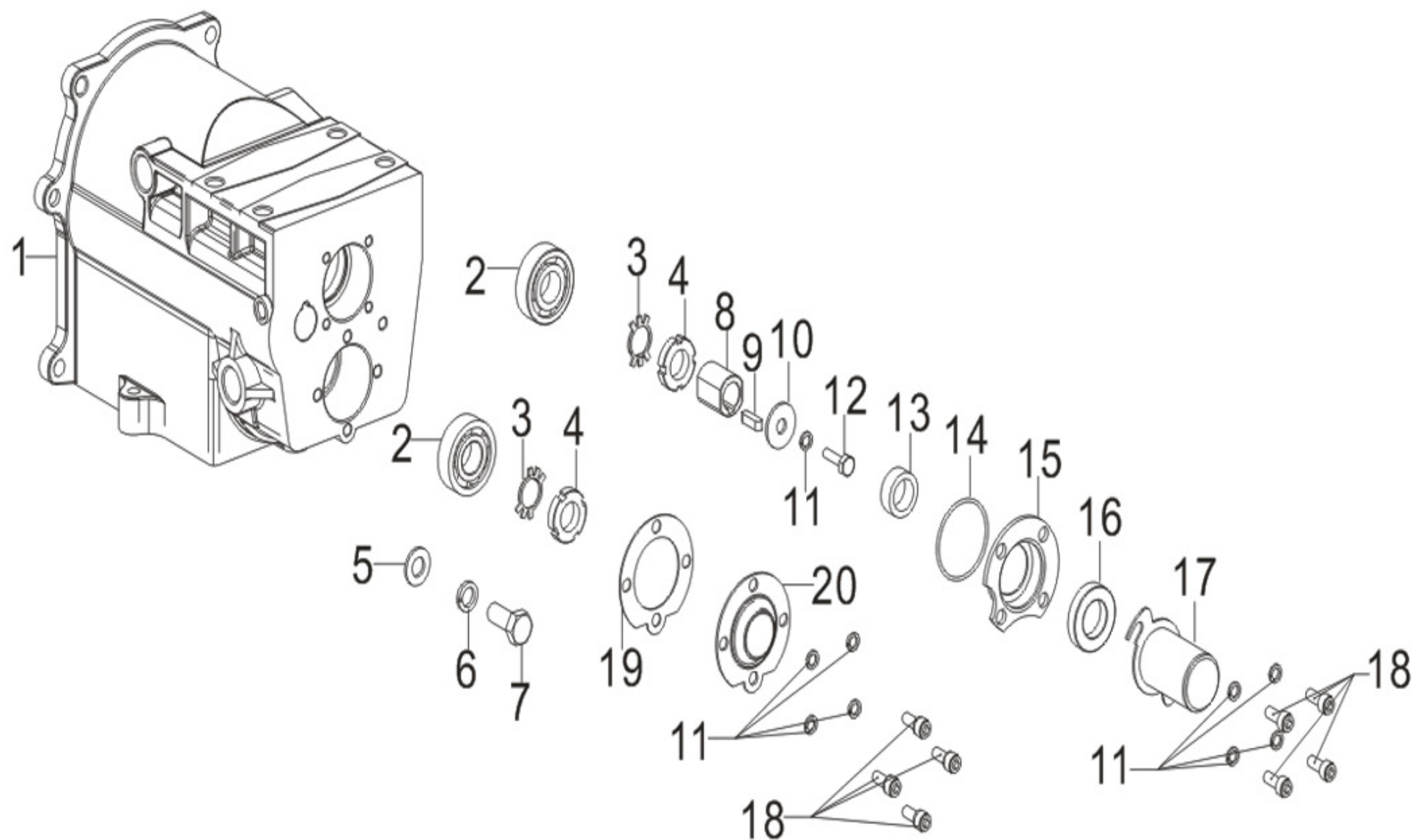
UPPER GEAR BOX - B



SL NO	PART NO	DESCRIPTION	SL NO	PART NO	DESCRIPTION
1	AM-RTP-9P-TB01	ENGINE SEAL GASKET	17	AM-RTP-9P-TB17	STEEL BALL
2	AM-RTP-9P-TB02	FLANGE	18	AM-RTP-9P-TB18	STOPPER SPRING
3	AM-RTP-9P-TB03	PRESSURE RELIEF BOLT	19	AM-RTP-9P-TB19	D GEAR
4	AM-RTP-9P-TB04	EXHAUST OUTLET GASKET	20	AM-RTP-9P-TB20	RUBBER SEAL RING
5	AM-RTP-9P-TB05	HEXAGON SCREW	21	AM-RTP-9P-TB21	COUNTERSHAFT
6	AM-RTP-9P-TB06	FLAT WASHER	22	AM-RTP-9P-TB22	Flat key
7	AM-RTP-9P-TB07	HEXAGONAL HEAD BOLT	23	AM-RTP-9P-TB23	D GEAR
8	AM-RTP-9P-TB08	PISITON PIN	24	AM-RTP-9P-TB24	TAPERED ROLLER BEARINGS
9	AM-RTP-9P-TB09	FLANGE SEAL GASKET	25	AM-RTP-9P-TB25	COTTER PIN
10	AM-RTP-9P-TB10	BALL BEARING	26	AM-RTP-9P-TB26	HEXAGON SLOTTED NUT
11	AM-RTP-9P-TB11	CLUTCH	27	AM-RTP-9P-TB27	FLAT WASHER
12	AM-RTP-9P-TB12	HEXAGONAL HEAD BOLT	28	AM-RTP-9P-TB28	REVERSE GEAR STOP COLLAR
13	AM-RTP-9P-TB13	FLAT WASHER	29	AM-RTP-9P-TB29	REVERSE GEAR SPRING
14	AM-RTP-9P-TB14	EXTRA LARGE GASKET	30	AM-RTP-9P-TB30	FLAT WASHER
15	AM-RTP-9P-TB15	STILL RING	31	AM-RTP-9P-TB31	D GEAR
16	AM-RTP-9P-TB16	MAIN AXLE	32	AM-RTP-9P-TB32	REVERSE GEAR COLLAR

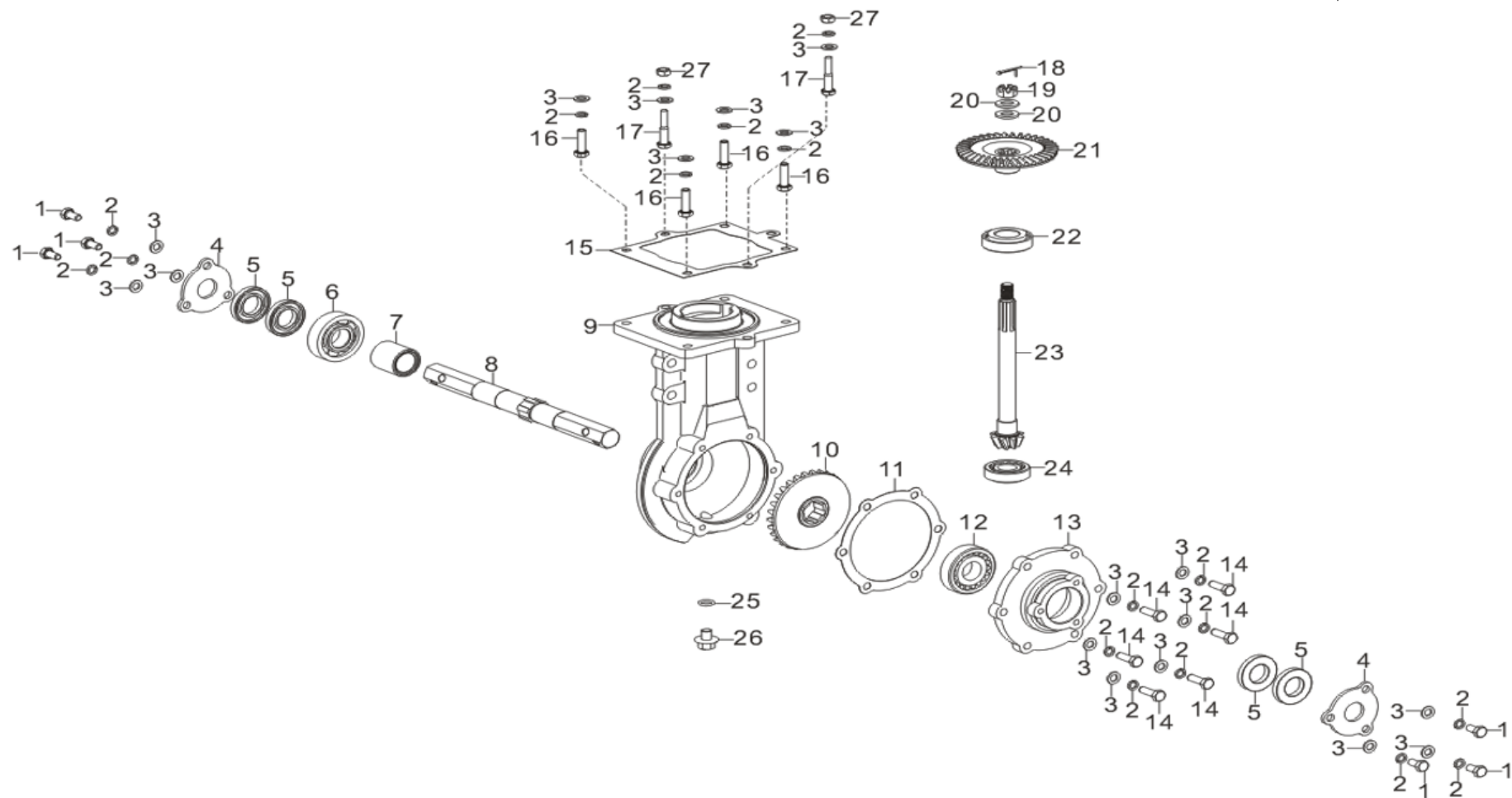
SL NO	PART NO	DESCRIPTION	SL NO	PART NO	DESCRIPTION
33	AM-RTP-9P-TB33	REVERSE GEAR SHAFT	49	AM-RTP-9P-TB49	SHIFTS FORK
34	AM-RTP-9P-TB34	PIN	50	AM-RTP-9P-TB50	SHIFTS FORK SUBASSEMBLY
35	AM-RTP-9P-TB35	RUBBER SEAL RING	51	AM-RTP-9P-TB51	INHAUL CABLE BASE
36	AM-RTP-9P-TB36	HEXAGON NUT	52	AM-RTP-9P-TB52	HEXAGON NUT WITH FLANGE
37	AM-RTP-9P-TB37	SHIFT ARM	53	AM-RTP-9P-TB53	SHIFTS FORK
38	AM-RTP-9P-TB38	O-TYPE RUBBER SEAL RING	54	AM-RTP-9P-TB54	SHIFTS FORK SUBASSEMBLY
39	AM-RTP-9P-TB39	BUSH	55	AM-RTP-9P-TB55	INHAUL CABLE BASE
40	AM-RTP-9P-TB40	FORK SUBASSEMBLY	56	AM-RTP-9P-TB56	TRANSMISSION BOX BODY
41	AM-RTP-9P-TB41	OIL DIPSTICK SUBASSEMBLY	57	AM-RTP-9P-TB57	FLAT WASHER
42	AM-RTP-9P-TB42	INHAUL CABLE BASE	58	AM-RTP-9P-TB58	DEEP GROOVE BALL BEARING
43	AM-RTP-9P-TB43	SHIFTS FORK			
44	AM-RTP-9P-TB44	FLAT WASHER			
45	AM-RTP-9P-TB45	COTTER PIN			
46	AM-RTP-9P-TB46	CIRCLIP FOR SHAFT			
47	AM-RTP-9P-TB47	PIN SHAFT			
48	AM-RTP-9P-TB48	COTTER PIN			

REAR UPPER GEAR BOX - C



SL NO	PART NO	DESCRIPTION	SL NO	PART NO	DESCRIPTION
1	AM-RTP-9P-TC01	TRANSMISSION BOX BODY	17	AM-RTP-9P-TC17	MAIN SHAFT SAFETY GUARD
2	AM-RTP-9P-TC02	DEEP GROOVE BALL BEARING	18	AM-RTP-9P-TC18	HEXAGON SCREW
3	AM-RTP-9P-TC03	LOCK WASHER FOR ROUND NUTS	19	AM-RTP-9P-TC19	COUNTERSHAFTGASKET
4	AM-RTP-9P-TC04	ROUND NUT	20	AM-RTP-9P-TC20	COUNTERSHAFT END COVER
5	AM-RTP-9P-TC05	FLAT WASHER			
6	AM-RTP-9P-TC06	STANDARD SPRING WASHER			
7	AM-RTP-9P-TC07	HEXAGONAL HEAD BOLT			
8	AM-RTP-9P-TC08	FLAT KEY SET			
9	AM-RTP-9P-TC09	FLAT KEY			
10	AM-RTP-9P-TC10	EXTRA LARGE GASKET			
11	AM-RTP-9P-TC11	FLAT WASHER			
12	AM-RTP-9P-TC12	HEXAGONAL HEAD BOLT			
13	AM-RTP-9P-TC13	BUSH			
14	AM-RTP-9P-TC14	O-TYPE RUBBER SEAL RING			
15	AM-RTP-9P-TC15	MAIN SHAFT GLAND			
16	AM-RTP-9P-TC16	OIL SEAL			

LOWER GEAR BOX - D



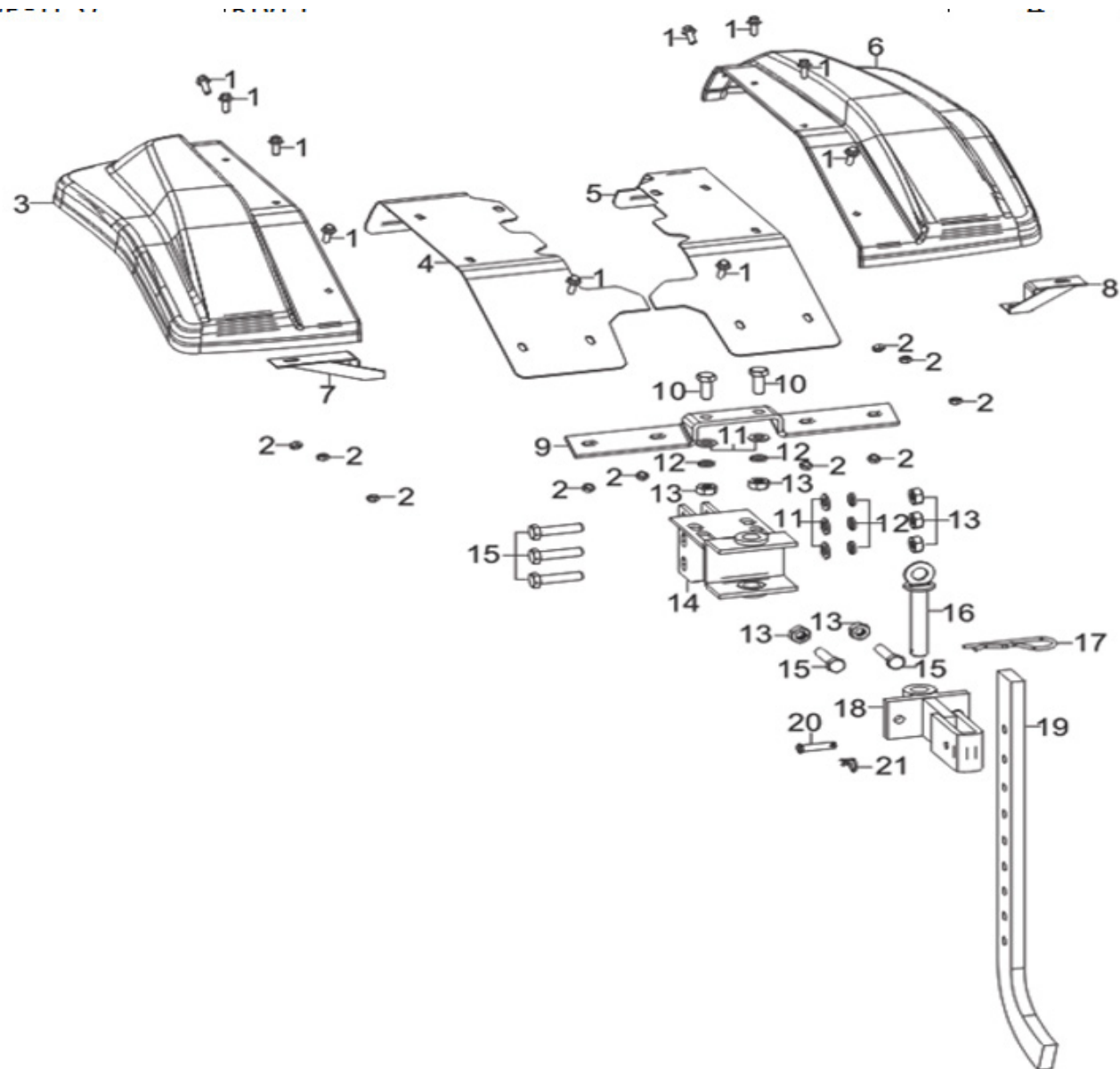
SL NO	PART NO	DESCRIPTION	SL NO	PART NO	DESCRIPTION
1	AM-RTP-9P-TD01	HEXAGONAL HEAD BOLT	17	AM-RTP-9P-TD17	HEXAGONAL HEAD BOLT
2	AM-RTP-9P-TD02	FLAT WASHER	18	AM-RTP-9P-TD18	COTTER PIN
3	AM-RTP-9P-TD03	FLAT WASHER	19	AM-RTP-9P-TD19	HEXAGON SLOTTED NUT
4	AM-RTP-9P-TD04	OUTPUT SHAFT DUST-PROOF COVER	20	AM-RTP-9P-TD20	FLAT WASHER
5	AM-RTP-9P-TD05	OIL SEAL	21	AM-RTP-9P-TD21	DRIVEN BEVEL GEAR
6	AM-RTP-9P-TD06	DEEP GROOVE BALL BEARING	22	AM-RTP-9P-TD22	TAPERED ROLLER BEARINGS
7	AM-RTP-9P-TD07	BUSH	23	AM-RTP-9P-TD23	TRANSPORTATION BEVEL GEAR SHAFT
8	AM-RTP-9P-TD08	OUTPUT SHAFT	24	AM-RTP-9P-TD24	TAPERED ROLLER BEARINGS
9	AM-RTP-9P-TD09	TRANSMISSION BOX BODY	25	AM-RTP-9P-TD25	O-TYPE RUBBER SEAL RING
10	AM-RTP-9P-TD10	TRANSPORTATION BEVEL GEAR	26	AM-RTP-9P-TD26	DRAIN PLUG BOLT
11	AM-RTP-9P-TD11	SEALING GASKET			
12	AM-RTP-9P-TD12	TAPERED ROLLER BEARINGS			
13	AM-RTP-9P-TD13	TRANSPORTATION BOX END COVER			
14	AM-RTP-9P-TD14	HEXAGONAL HEAD BOLT			
15	AM-RTP-9P-TD15	MOULD ASSEMBLING SEAL GASKET			
16	AM-RTP-9P-TD16	HEXAGONAL HEAD BOLT			

HANDLE - E

SL NO	PART NO	DESCRIPTION	SL NO	PART NO	DESCRIPTION
1	AM-RTP-9PR-TE01	R PIN	17	AM-RTP-9PR-TE17	FLAT WASHER
2	AM-RTP-9PR-TE02	GEAR LEVER	18	AM-RTP-9PR-TE18	HEXAGONAL HEAD BOLT
3	AM-RTP-9PR-TE03	LOCK HANDLE	19	AM-RTP-9PR-TE19	HANDLE TUBE ASSY
4	AM-RTP-9PR-TE04	WIRE CLIP	20	AM-RTP-9PR-TE20	FORWARD CLUTCH HANDLE ASSEMBLY
5	AM-RTP-9PR-TE05	FLAT WASHER	21	AM-RTP-9PR-TE21	HEXAGONAL HEAD BOLT
6	AM-RTP-9PR-TE06	FLAT WASHER	22	AM-RTP-9PR-TE22	ARMREST ASSEMBLY
7	AM-RTP-9PR-TE07	HANDLE TUBE ASSY	23	AM-RTP-9PR-TE23	HEXAGONAL HEAD BOLT
8	AM-RTP-9PR-TE08	SWITCH SUBASSEMBLY, STOP ENGINE	24	AM-RTP-9PR-TE24	FLAT WASHER
9	AM-RTP-9PR-TE09	LOCK HANDLE	25	AM-RTP-9PR-TE25	CROSS-RECESSED PAN HEAD SELF- TAPPING SCREW
10	AM-RTP-9PR-TE10	FLAT WASHER	26	AM-RTP-9PR-TE26	FLAT WASHER
11	AM-RTP-9PR-TE11	TOOTH DISK PLATE	27	AM-RTP-9PR-TE27	FLAT WASHER
12	AM-RTP-9PR-TE12	THROTILE COCK ASSEMBLY	28	AM-RTP-9PR-TE28	HEXAGON NUT
13	AM-RTP-9PR-TE13	HANDLE RUBBER SLEEVE	29	AM-RTP-9PR-TE29	REVERSE GEAR CABLE
14	AM-RTP-9PR-TE14	PANEL	30	AM-RTP-9PR-TE30	REVERSE CLUTCH HANDLE
15	AM-RTP-9PR-TE15	HEXAGON LOCK NUT	31	AM-RTP-9PR-TE31	PIN SHAFT
16	AM-RTP-9PR-TE16	STANDARD SPRING WASHER	32	AM-RTP-9PR-TE32	PIN SHAFT

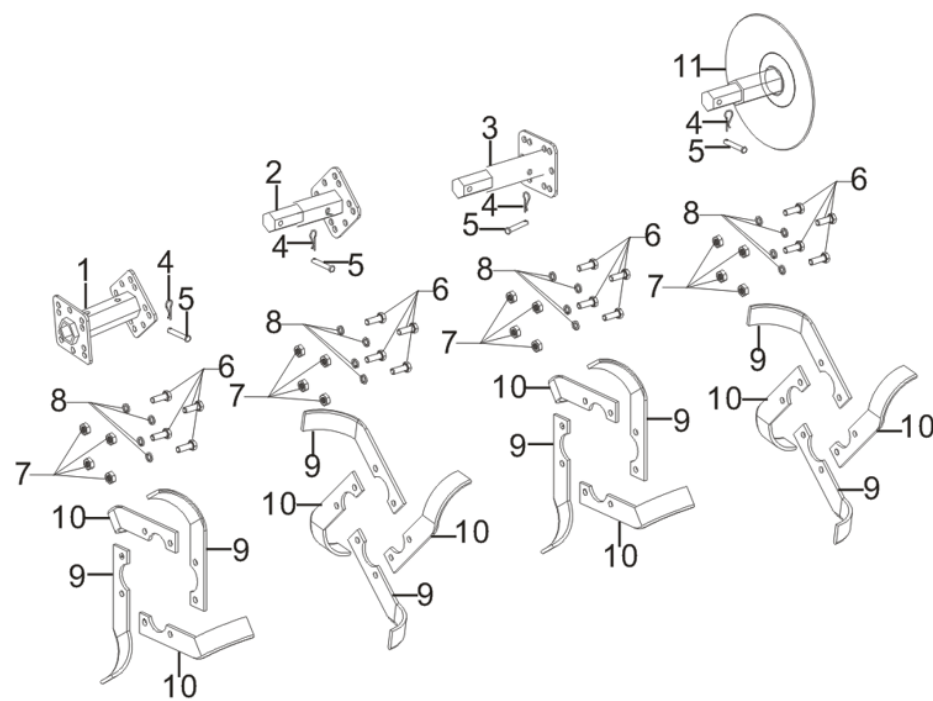
[illegible]

FENDER- F



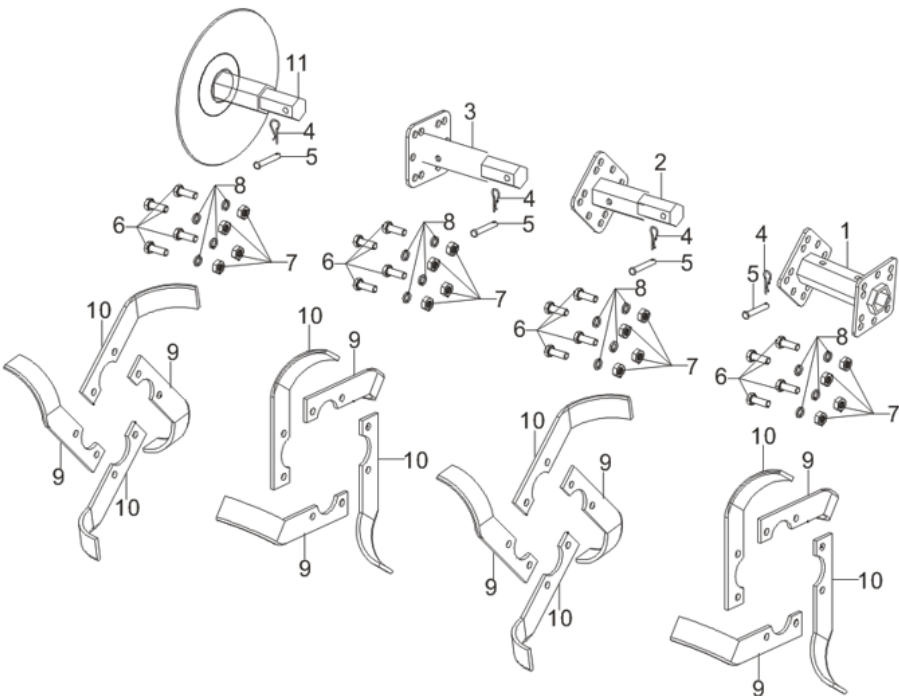
SL NO	PART NO	DESCRIPTION	SL NO	PART NO	DESCRIPTION
1	AM-RTP-9P-TF01	BOLT	17	AM-RTP-9P-TF17	R PIN
2	AM-RTP-9P-TF02	LOCKING NUT	18	AM-RTP-9P-TF18	CONNECTION FRAME
3	AM-RTP-9P-TF03	MINI-TILLER FENDER- LEFT	19	AM-RTP-9P-TF19	DAMPING ARM
4	AM-RTP-9P-TF04	MINI-TILLER FENDER- LEFT	20	AM-RTP-9P-TF20	PIN SHAFT
5	AM-RTP-9P-TF05	MINI-TILLER FENDER-RIGHT	21	AM-RTP-9P-TF21	R PIN
6	AM-RTP-9P-TF06	MINI-TILLER FENDER-RIGHT	22	AM-RTP-9P-TF22	LARGE WASHER - GRADE A
7	AM-RTP-9P-TF07	FRONT FENDER SUPPORT			
8	AM-RTP-9P-TF08	FRONT FENDER SUPPORT			
9	AM-RTP-9P-TF09	FRONT FENDER SUPPORT			
10	AM-RTP-9P-TF10	HEXAGONAL HEAD BOLT			
11	AM-RTP-9P-TF11	FLAT WASHER			
12	AM-RTP-9P-TF12	STANDARD SPRING WASHER			
13	AM-RTP-9P-TF13	HEXAGON NUT			
14	AM-RTP-9P-TF14	TRAILING BODY			
15	AM-RTP-9P-TF15	HEXAGONAL HEAD BOLT			
16	AM-RTP-9P-TF16	PIN SHAFT			

LEFT BLADES - G



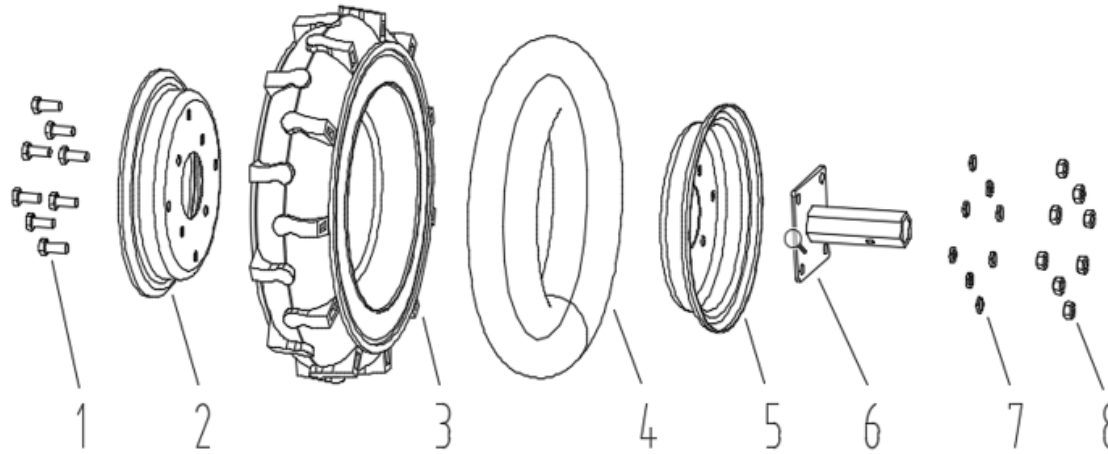
SL NO	PART NO	DESCRIPTION
1	AM-RTP-9P-TG01	CYLINDER
2	AM-RTP-9P-TG02	CYLINDER
3	AM-RTP-9P-TG03	CYLINDER
4	AM-RTP-9P-TG04	PIN SHAFT
5	AM-RTP-9P-TG05	R PIN
6	AM-RTP-9P-TG06	HEXAGONAL HEAD BOLT
7	AM-RTP-9P-TG07	HEXAGON NUT
8	AM-RTP-9P-TG08	FLAT WASHER
9	AM-RTP-9P-TG09	LEFT ROTARY BLADE
10	AM-RTP-9P-TG10	LEFT ROTARY BLADE
11	AM-RTP-9P-TG11	TRIMMING WHEEL

RIGHT BLADES



SL NO	PART NO	DESCRIPTION
1	AM-RTP-9P-TH01	CYLINDER
2	AM-RTP-9P-TH02	CYLINDER
3	AM-RTP-9P-TH03	CYLINDER
4	AM-RTP-9P-TH04	PIN SHAFT
5	AM-RTP-9P-TH05	R PIN
6	AM-RTP-9P-TH06	HEXAGONAL HEAD BOLT
7	AM-RTP-9P-TH07	HEXAGON NUT
8	AM-RTP-9P-TH08	FLAT WASHER
9	AM-RTP-9P-TH09	RIGHT ROTARY BLADE
10	AM-RTP-9P-TH10	RIGHT ROTARY BLADE
11	AM-RTP-9P-TH11	TRIMMING WHEEL

RIGHT & LEFT WHEEL ASSY - J



SL NO	PART NO	DESCRIPTION
1	AM-RTP-9P-TJ01	HEXAGONAL HEAD BOLT
2	AM-RTP-9P-TJ02	WHEEL HUB
3	AM-RTP-9P-TJ03	OUTER TUBE
4	AM-RTP-9P-TJ04	INNER TUBE
5	AM-RTP-9P-TJ05	WHEEL HUB
6	AM-RTP-9P-TJ06	REAR WHEEL SHAFT
7	AM-RTP-9P-TJ07	FLAT WASHER
8	AM-RTP-9P-TJ08	HEXAGON NUT

WARRANTY CARD

CUSTOMER COPY

DATE _____	DATE OF DELIVERY _____	DEALERS OFFICIAL SEAL	DEALERS SIGN _____
PURCHASERS NAME & ADDRESS _____ _____ _____	<div>CUSTOMER SIGN</div>	<div></div>	
PRODUCT NAME	PRODUCT SERIAL NO.	INVOICE/DN NO.	
<div></div>	<div></div>	<div></div>	
I/Will accept the terms and conditions of warranty as in the warranty card			

DEALERS COPY

DATE _____	DATE OF DELIVERY _____	DEALERS OFFICIAL SEAL	DEALERS SIGN _____
PURCHASERS NAME & ADDRESS _____ _____ _____	<div>CUSTOMER SIGN</div>	<div></div>	
PRODUCT NAME	PRODUCT SERIAL NO.	INVOICE/DN NO.	
<div></div>	<div></div>	<div></div>	
I/Will accept the terms and conditions of warranty as in the warranty card			

COMPANY COPY

DATE _____	DATE OF DELIVERY _____	DEALERS OFFICIAL SEAL	DEALERS SIGN _____
PURCHASERS NAME & ADDRESS _____ _____ _____	<div>CUSTOMER SIGN</div>	<div></div>	
PRODUCT NAME	PRODUCT SERIAL NO.	INVOICE/DN NO.	
<div></div>	<div></div>	<div></div>	
I/Will accept the terms and conditions of warranty as in the warranty card			

1. LIMITED WARRANTY PERIOD : For a period of six months from the date of Sale / delivery of the product which ever is earlier. 2. LIMITED WARRANTY OBLIGATION : Replacement of defective part(s) by authorized dealer are free of charges. If found defective by reasons of defective material / poor workmanship, parts will be replaced and there will be no value re-imbursement. 3. TERMS & CONDITIONS : a. Claims under warranty will be accepted on submission of Warranty Card duly filled and stamped by authorized dealer together with the original purchase document. : b. Shipping / transportation / Incidental charges incurred in replacing defective parts under warranty shall be borne by the purchaser

WARRANTY null & void if
(i) Lack of maintenance, (ii) Incorrect use of the machine or tampering, (iii) Use of non-genuine spare parts, (iv) Usage of acids, solvents, or any flammable materials, (v) Non-usage of filter water / clear water / soft water & using water above 40°C temperature, (vi) While using the pressure washers to draw water which is contaminated with dust & solvents (eg. paint thinners, gasoline, oil, etc.), (vii) Repair done by unauthorized service people, (viii) Those parts subject to wear & tear due to normal operations and plastic parts, rubber items etc, (ix) Loose connections, faulty electrical fixtures & fluctuations in power supply.
4. Should any failure occur during or after the warranty period, customer does not have the right to interrupt payment / price discount.
5. Incidental or consequential damages like inconvenience commercial loss, loss of tie, mental agony etc.
6. Loss of any nature due to operation or non-operation is not covered under warranty.
7. All free service are at Dealer's service point only.
8. Warranty ceases if service is not done periodically.
9. The attached card should be completed and returned to Ratnagiri Impex Pvt. Ltd. for registration immediately after sale / delivery.
10. The warranty is void unless you register the warranty card with Ratnagiri Impex Pvt. Ltd.
11. The decision of Ratnagiri Impex Pvt. Ltd., in settling the warranty is final in all respects.
12. All disputes are subject to Bangalore Courts Jurisdiction

1. LIMITED WARRANTY PERIOD : For a period of six months from the date of Sale / delivery of the product which ever is earlier. 2. LIMITED WARRANTY OBLIGATION : Replacement of defective part(s) by authorized dealer are free of charges. If found defective by reasons of defective material / poor workmanship, parts will be replaced and there will be no value re-imbursement. 3. TERMS & CONDITIONS : a. Claims under warranty will be accepted on submission of Warranty Card duly filled and stamped by authorized dealer together with the original purchase document. : b. Shipping / transportation / Incidental charges incurred in replacing defective parts under warranty shall be borne by the purchaser.

WARRANTY null & void if
(i) Lack of maintenance, (ii) Incorrect use of the machine or tampering, (iii) Use of non-genuine spare parts, (iv) Usage of acids, solvents, or any flammable materials, (v) Non-usage of filter water / clear water / soft water & using water above 40°C temperature, (vi) While using the pressure washers to draw water which is contaminated with dust & solvents (eg. paint thinners, gasoline, oil, etc.), (vii) Repair done by unauthorized service people, (viii) Those parts subject to wear & tear due to normal operations and plastic parts, rubber items etc, (ix) Loose connections, faulty electrical fixtures & fluctuations in power supply.
4. Should any failure occur during or after the warranty period, customer does not have the right to interrupt payment / price discount.
5. Incidental or consequential damages like inconvenience commercial loss, loss of tie, mental agony etc.
6. Loss of any nature due to operation or non-operation is not covered under warranty.
7. All free service are at Dealer's service point only.
8. Warranty ceases if service is not done periodically.
9. The attached card should be completed and returned to Ratnagiri Impex Pvt. Ltd. for registration immediately after sale / delivery.
10. The warranty is void unless you register the warranty card with Ratnagiri Impex Pvt. Ltd.
11. The decision of Ratnagiri Impex Pvt. Ltd., in settling the warranty is final in all respects.
12. All disputes are subject to Bangalore Courts Jurisdiction

1. LIMITED WARRANTY PERIOD : For a period of six months from the date of Sale / delivery of the product which ever is earlier. 2. LIMITED WARRANTY OBLIGATION : Replacement of defective part(s) by authorized dealer are free of charges. If found defective by reasons of defective material / poor workmanship, parts will be replaced and there will be no value re-imbursement. 3. TERMS & CONDITIONS : a. Claims under warranty will be accepted on submission of Warranty Card duly filled and stamped by authorized dealer together with the original purchase document. : b. Shipping / transportation / Incidental charges incurred in replacing defective parts under warranty shall be borne by the purchaser.

WARRANTY null & void if
(i) Lack of maintenance, (ii) Incorrect use of the machine or tampering, (iii) Use of non-genuine spare parts, (iv) Usage of acids, solvents, or any flammable materials, (v) Non-usage of filter water / clear water / soft water & using water above 40°C temperature, (vi) While using the pressure washers to draw water which is contaminated with dust & solvents (eg. paint thinners, gasoline, oil, etc.), (vii) Repair done by unauthorized service people, (viii) Those parts subject to wear & tear due to normal operations and plastic parts, rubber items etc, (ix) Loose connections, faulty electrical fixtures & fluctuations in power supply.
4. Should any failure occur during or after the warranty period, customer does not have the right to interrupt payment / price discount.
5. Incidental or consequential damages like inconvenience commercial loss, loss of tie, mental agony etc.
6. Loss of any nature due to operation or non-operation is not covered under warranty.
7. All free service are at Dealer's service point only.
8. Warranty ceases if service is not done periodically.
9. The attached card should be completed and returned to Ratnagiri Impex Pvt. Ltd. for registration immediately after sale / delivery.
10. The warranty is void unless you register the warranty card with Ratnagiri Impex Pvt. Ltd.
11. The decision of Ratnagiri Impex Pvt. Ltd., in settling the warranty is final in all respects.
12. All disputes are subject to Bangalore Courts Jurisdiction

FREE SERVICE COUPON (30DAYS/30HRS. WHICHEVER IS EARLIER)

MODEL	<input type="text"/>	SERIAL NUMBER	<input type="text"/>
PDI DATE	SERVICE NO.	PURCHASE BILL NO.	DATE
<input type="text"/>	<input type="text"/>	<input type="text"/>	<input type="text"/>
DEALERS OFFICE SEAL	OPERATIONS		
<input type="text"/>	<div> <div> 1. Check and test the fuel mixture 3. Check , clean and adjust the spark plug 5. Check and sparken the cutting tools 7. Start and check the noise, vibration, loosen etc.. </div> <div> 2. check and clean the air filter 4. Check and adjust the carburetor tuning 6. Product familiarisation on usage 8. Routine maintenance and shortage. </div> </div>		

FREE SERVICE COUPON (30DAYS/30HRS. WHICHEVER IS EARLIER)

MODEL	<input type="text"/>	SERIAL NUMBER	<input type="text"/>
PDI DATE	SERVICE NO.	PURCHASE BILL NO.	DATE
<input type="text"/>	<input type="text"/>	<input type="text"/>	<input type="text"/>
DEALERS OFFICE SEAL	OPERATIONS		
<input type="text"/>	<div> <div> 1. Check and test the fuel mixture 3. Check , clean and adjust the spark plug 5. Check and sparken the cutting tools 7. Start and check the noise, vibration, loosen etc.. </div> <div> 2. check and clean the air filter 4. Check and adjust the carburetor tuning 6. Product familiarisation on usage 8. Routine maintenance and shortage. </div> </div>		

FREE SERVICE COUPON (30DAYS/30HRS. WHICHEVER IS EARLIER)

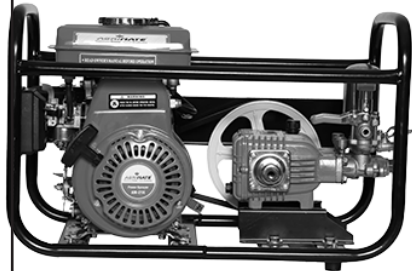
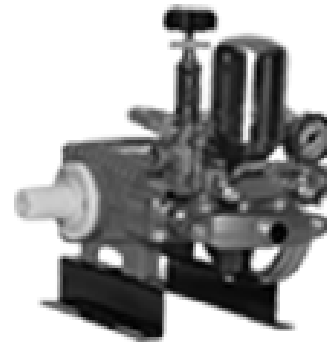
MODEL	<input type="text"/>	SERIAL NUMBER	<input type="text"/>
PDI DATE	SERVICE NO.	PURCHASE BILL NO.	DATE
<input type="text"/>	<input type="text"/>	<input type="text"/>	<input type="text"/>
DEALERS OFFICE SEAL	OPERATIONS		
<input type="text"/>	<div> <div> 1. Check and test the fuel mixture 3. Check , clean and adjust the spark plug 5. Check and sparken the cutting tools 7. Start and check the noise, vibration, loosen etc.. </div> <div> 2. check and clean the air filter 4. Check and adjust the carburetor tuning 6. Product familiarisation on usage 8. Routine maintenance and shortage. </div> </div>		

DOS & DONTs

1. Always read the instruction manual supplied along with the equipments and understand the correct installation and operating procedures before attempting to use the equipments.
2. It is important to use the personal protection equipments such as head helmet with visor, ear defenders, goggles, safety gloves, cut resistant shoes, trousers and jackets while operating potentially dangerous machines
3. Avoid untrained persons using the equipments. Children must not be allowed to handle these equipments
4. Always use genuine spares and accessories in repairs and usage to derive maximum life of the equipments.
5. Always keep the equipments in good working condition to minimize loss of output as well as to reduce the pollution and save the environment
6. Do not use the machine within range of persons unless they wear protective clothing
7. Do not operate the machine when fatigued or under the influence of alcohol or drugs
8. When the machine is running, please maintain a constant water supply. Without water circulation will damage the sealing rings of the machine.
9. For more query kindly contact for our Service Center/Dealer/ franchise

Agrimate Army For Pest Control

ANY WHERE - ANY TIME - ANY CROP



Marketed by:

**ratnagiri
impex**

BRINGING YOU THE FUTURE... NOW

RATNAGIRI IMPEX PVT., LTD.,

Annapurna House, #1 / 1G, 7th Cross, New
Guddadahalli

Mysore Road, Bangalore - 560 026

Missed Call : 7393 938 938

Email: ask@agrimart.in