

INTERCULTIVATOR/POWER WEEDER AM-RTP-9P CHAMPION

ENGINE DIAGRAM WITH PART LIST



DISCLAIMER : DUE TO CONTANT UPGRADATION FEATURES & SPECIFICATIONS ARE SELECT TO CHANGE WITHOUT NOTICE
BEFORE OPERATING THIS MACHINE PLEASE READ THIS INSTRUCTIONS MANUAL CAREFULLY

INTRODUCTION

Dear Sir/ Madam,

Thank you for choosing Agrimate product. You are the proud owner of high technology & durable machine. Trust that our Franchisee/Dealer installed the product & installed the product and explained you about the usage & service instructions. Please visit our authorised dealer for your future requirement of our other equipments, genuine spares, accessories and services. Service coupons are attached with this manual and you can avail free service to keep your machine fit always to use on demand.

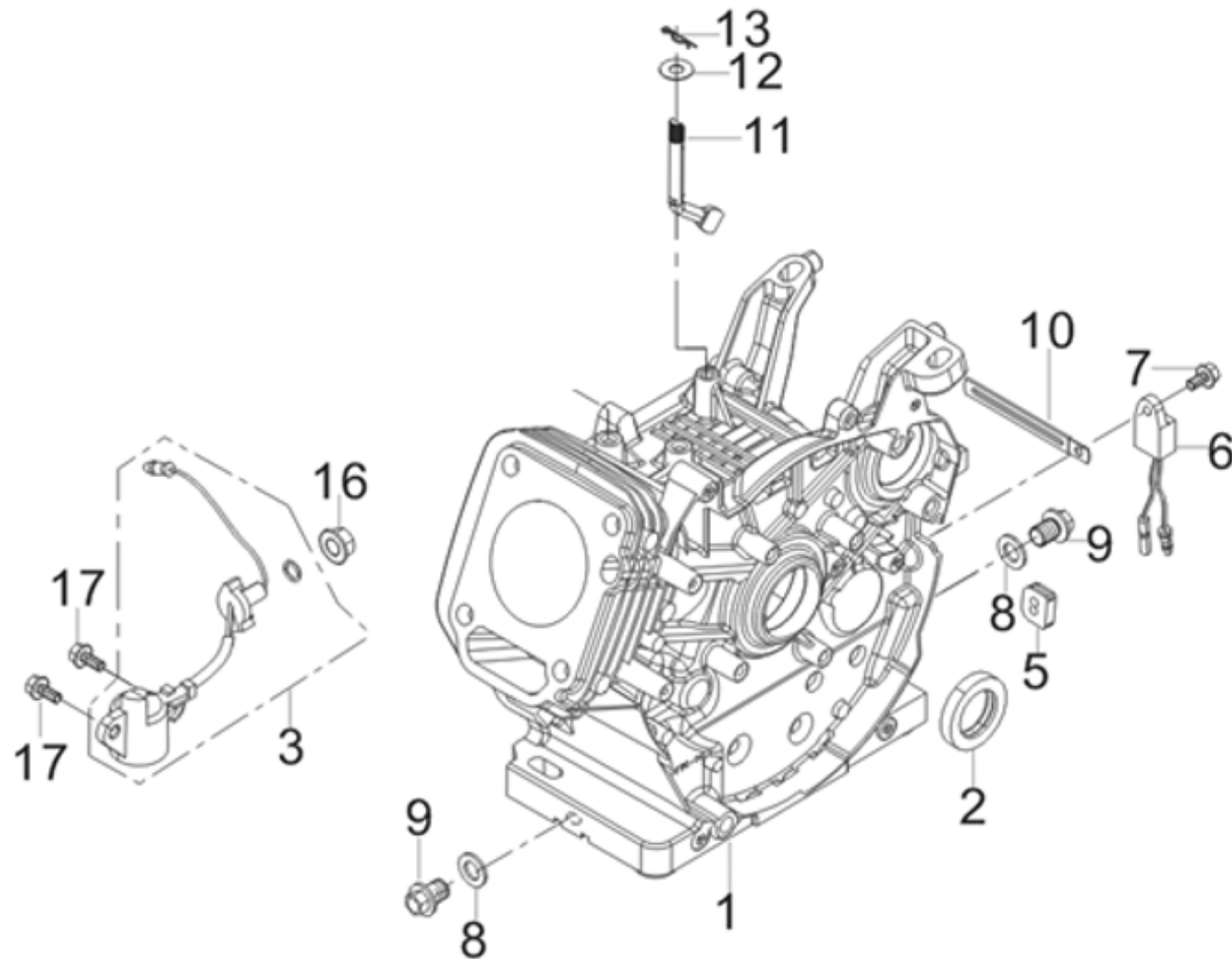
About Ratnagiri,

We import and market of high quality of agriculture wide range of equipments which we are selling through our authorised franchisee or dealer network. We are in this field from past years service the farmer. community. For further details, Please visit our website www.agrimart.in.
& Give a missed call to 7393 938 938.

TECHNICAL PARAMETERS

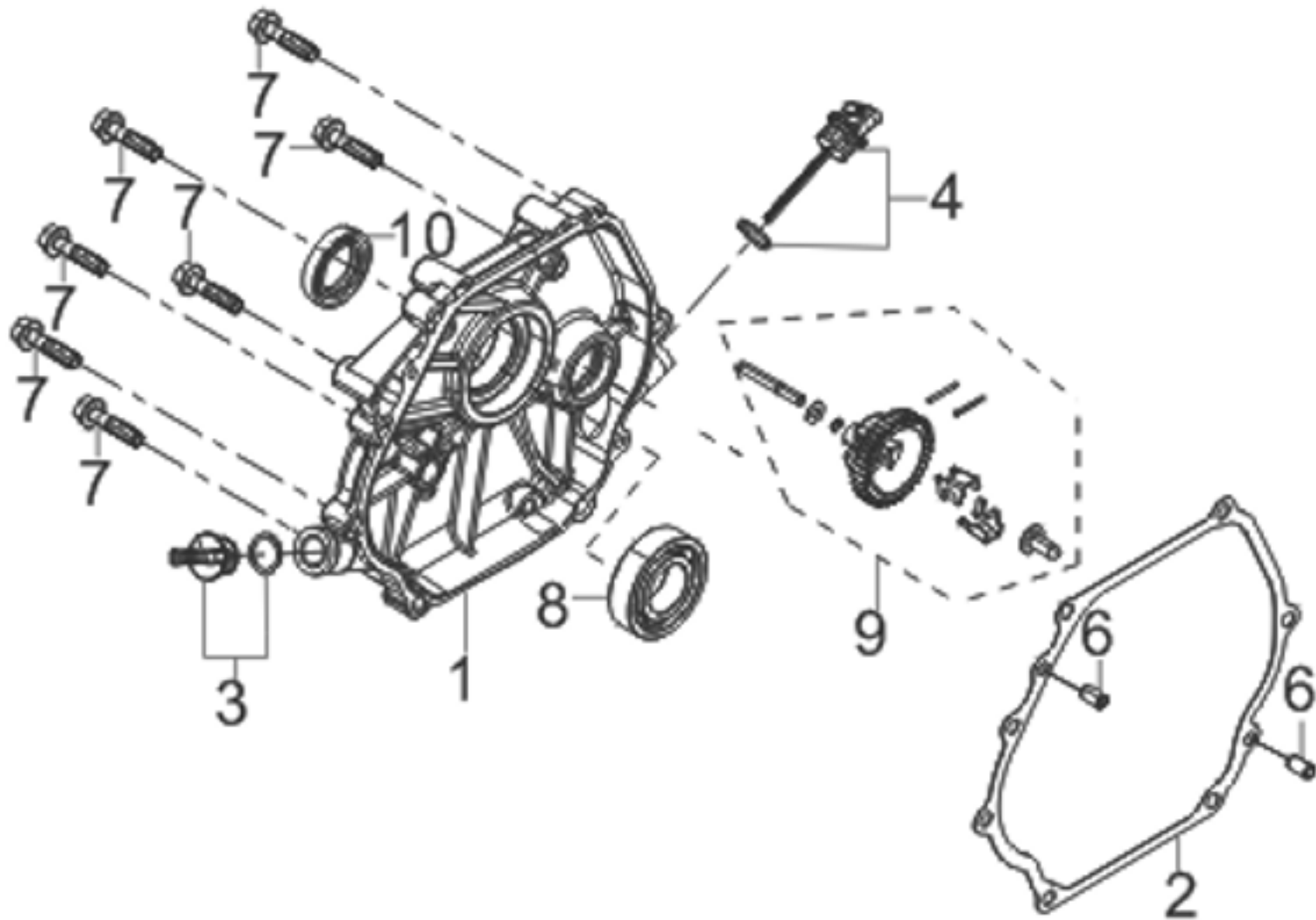
MODEL	AM-RTP-9P CHAMPION
STARTING	RECOIL
MAX. POWER	6/3600(KW/RPM)
DISPLACEMENT	301CC
FUEL TANK CAPACITY	5.4L
ENGINE OIL CAPACITY	1.1L
DRIVING MODEL	GEAR
GEAR	2 FORWARD + 1 REVERSE
TILLING DEPTH	≥100MM
TILLING WIDTH	1100MM
NW	115KG

CRANKCASE. / GEAR ASSY, GOVERNOR.-A



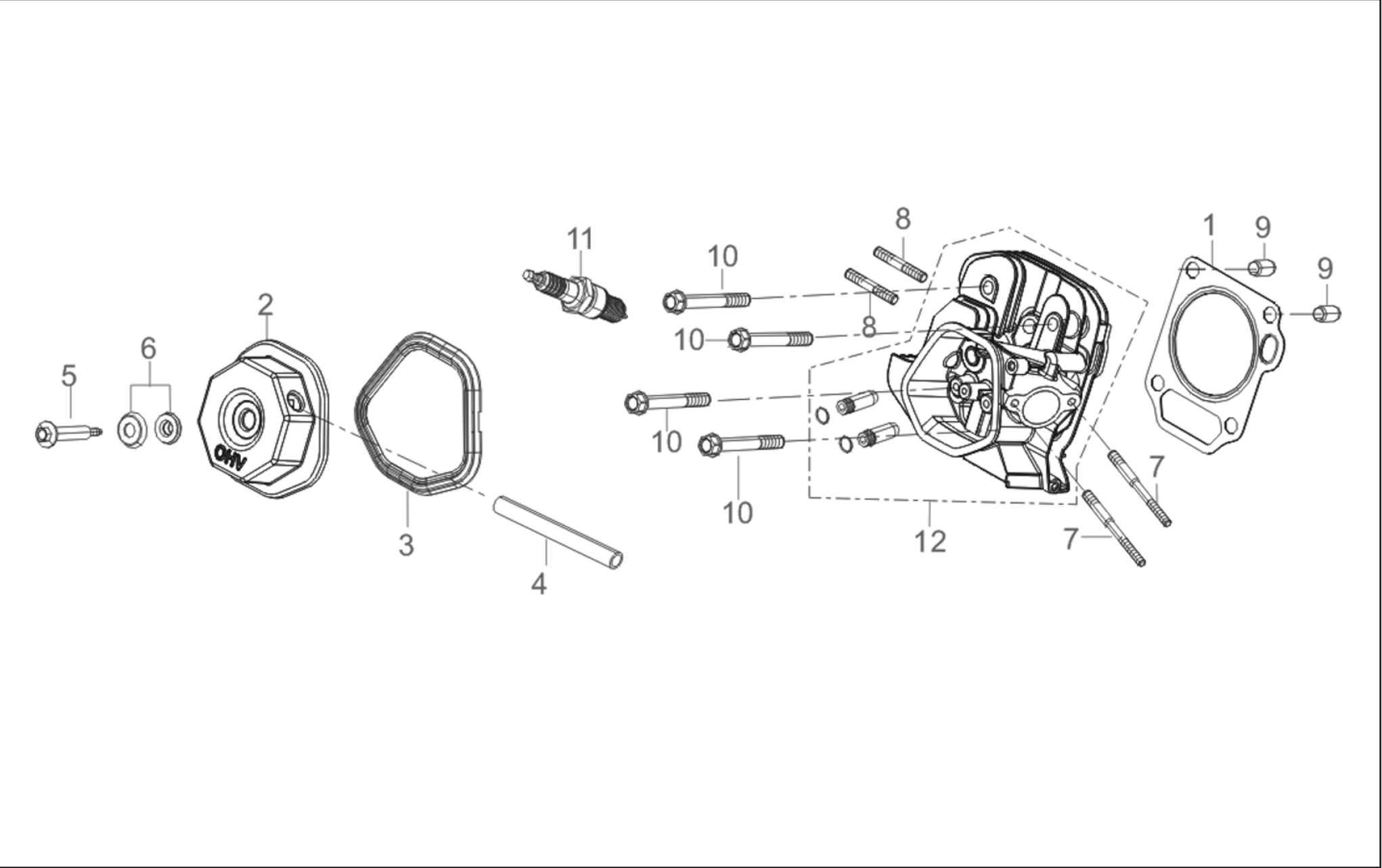
SL NO	PART NO	DESCRIPITON	SL NO	PART NO	DESCRIPITON
1	AM-R300-EA01	CRANKCASE SUBASSEMBLY	11	AM-R300-EA11	GOVERNOR ARM
2	AM-R300-EA02	OIL SEAL	12	AM-R300-EA12	FLAT WASHER
3	AM-R300-EA03	ENGINE OIL SENDOR	13	AM-R300-EA13	COTTER PIN
4	AM-R300-EA04	NA	14	AM-R300-EA14	NA
5	AM-R300-EA05	RUBBER PLUG	15	AM-R300-EA15	NA
6	AM-R300-EA06	OIL PROTECTOR	16	AM-R300-EA16	HEXAGON NUT WITH FLANGE
7	AM-R300-EA07	BOLT	17	AM-R300-EA17	BOLT
8	AM-R300-EA08	FLAT WASHER			
9	AM-R300-EA09	DRAIN PLU BOLT			
10	AM-R300-EA10	WIRE CLIP			

COVER SUBASSEMBLY, CRANKCASE - B



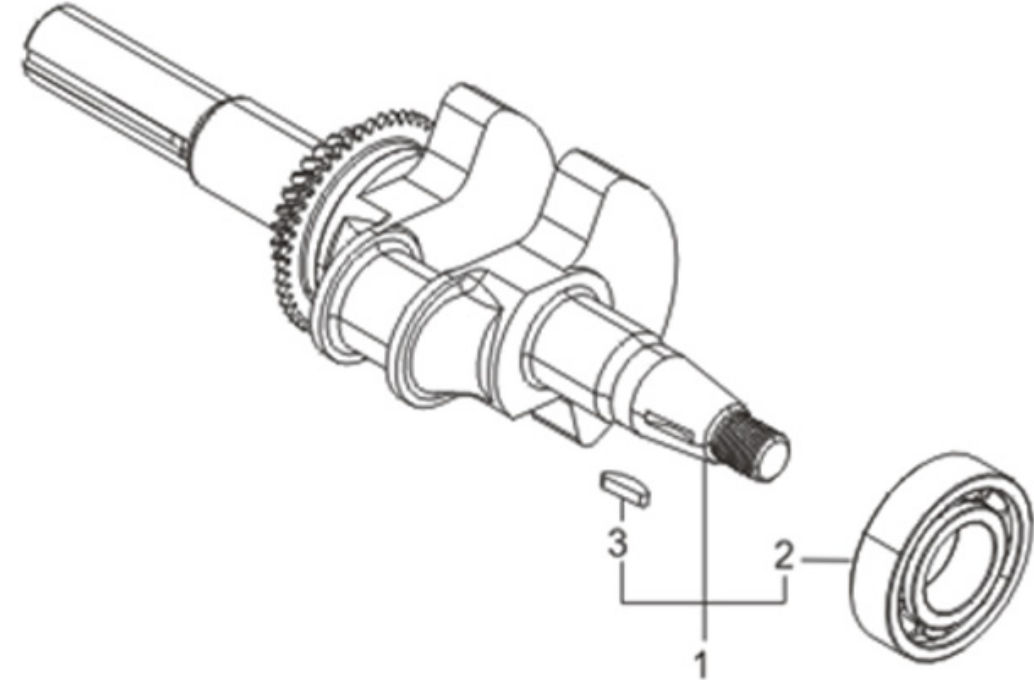
SL NO	PART NO	DESCRIPITON
1	AM-R300-EB01	CRANKCASE COVER
2	AM-R300-EB02	CRANKCASE GASKET
3	AM-R300-EB03	ENGINE OIL PLUG ASSAMBLY
4	AM-R300-EB04	OIL DIPSTICK SUBASSAMBLY
5	AM-R300-EB05	NA
6	AM-R300-EB06	PISTON PIN
7	AM-R300-EB07	BOLT
8	AM-R300-EB08	DEEP GROOVE BALL BEARING
9	AM-R300-EB09	GOVERNOR GEAR ASSY
10	AM-R300-EB10	OIL SEAL

HEAD SUBASSEMBLY, CYLINDER / PLUG,SPARK- C



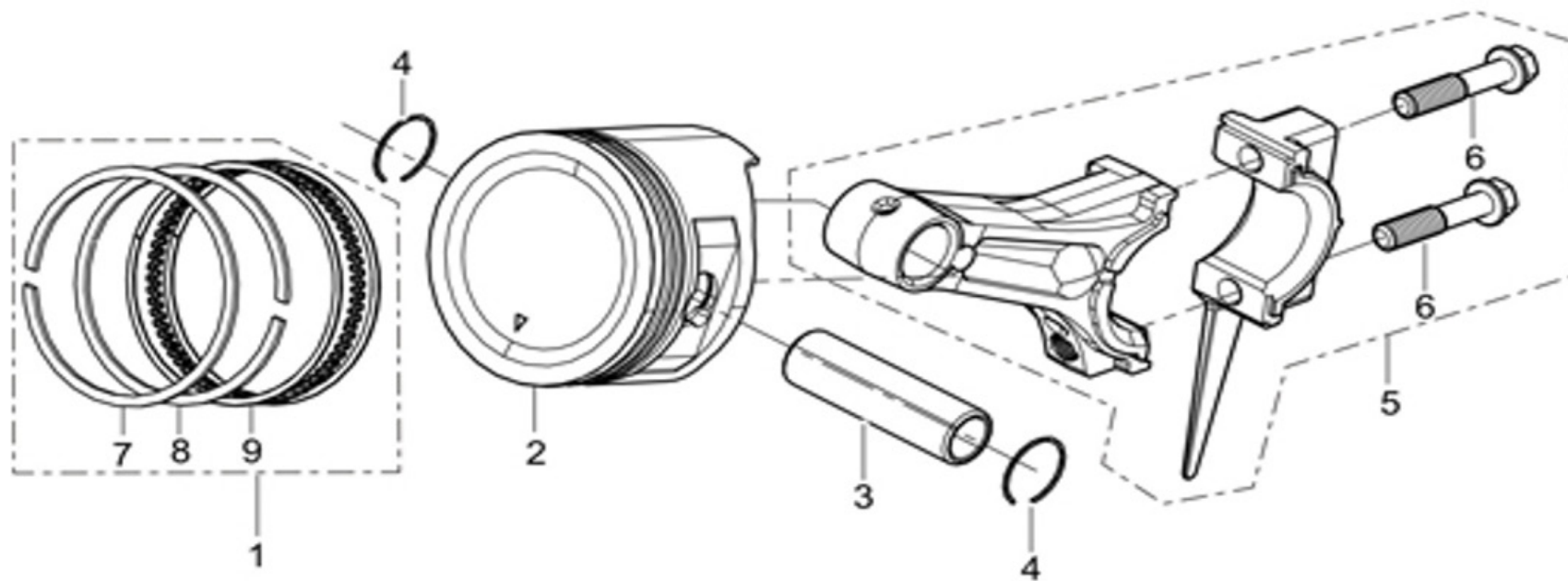
SL NO	PART NO	DESCRIPTION	SL NO	PART NO	DESCRIPTION
1	AM-R300-EC01	CYLINDER HEAD GASKET			
2	AM-R300-EC02	CYLINDER HEAD COVER SUBASSEMBLY			
3	AM-R300-EC03	CYLINDER HEAD COVER GASKET			
4	AM-R300-EC04	BREATHER TUBE			
5	AM-R300-EC05	CYLINDER HEAD COVER BOLT			
6	AM-R300-EC06	WASHER SET			
7	AM-R300-EC07	STUD BOLT			
8	AM-R300-EC08	STUD BOLT			
9	AM-R300-EC09	PISTON PIN			
10	AM-R300-EC10	CYLINDER HEAD BOLT			
11	AM-R300-EC11	SPARK PLUG			
12	AM-R300-EC12	CYLINDER HEAD SUBASSEMBLY			
13					
14					
15					
16					

ROD,CRANKSHAFT CONNETING - D



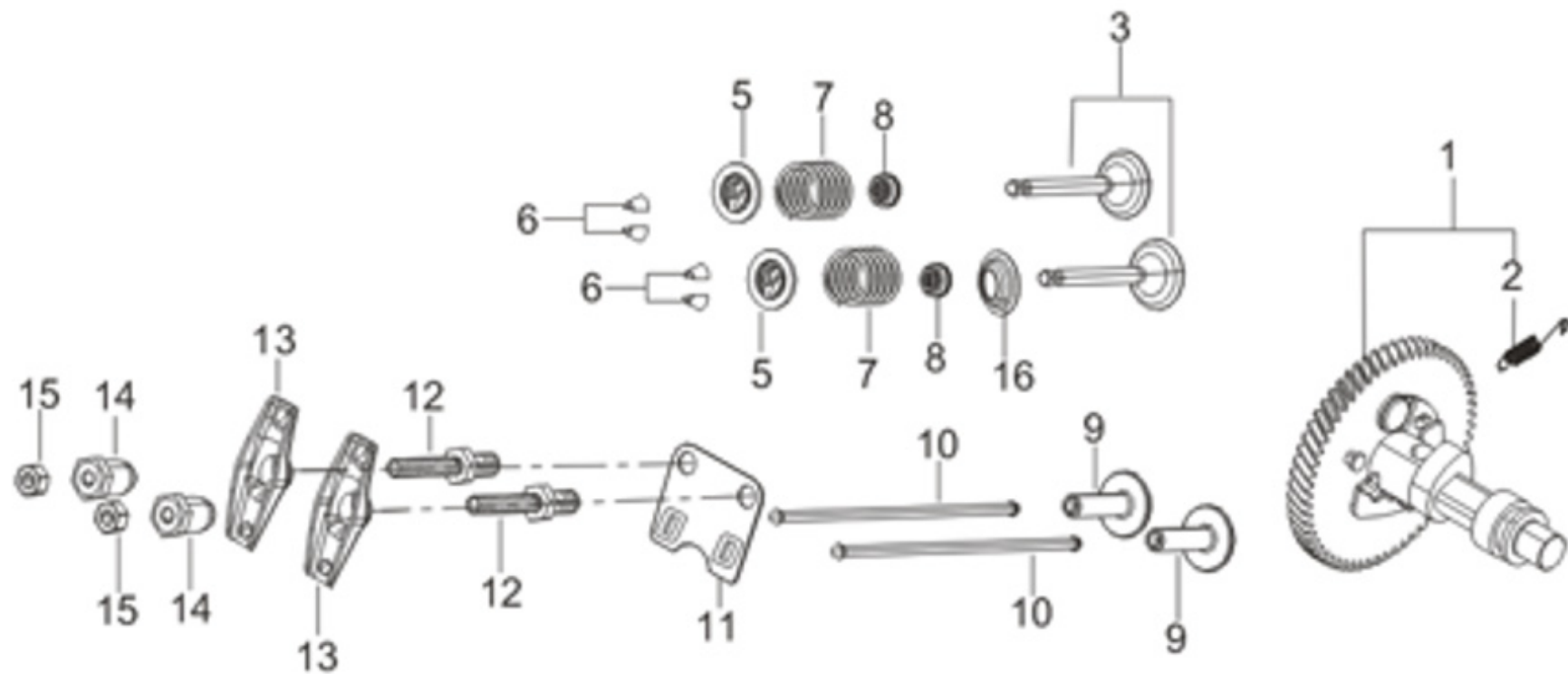
SL NO	PART NO	DESCRIPTION
1	AM-R300-ED01	CRANKSHAFT ASSY
2		
3		
4		
5		
6		
7		
8		
9		
10		
11		
12		
13		
14		
15		
16		

RING SET,OIL / ROD,CRANKSHAFT CONNETING - E



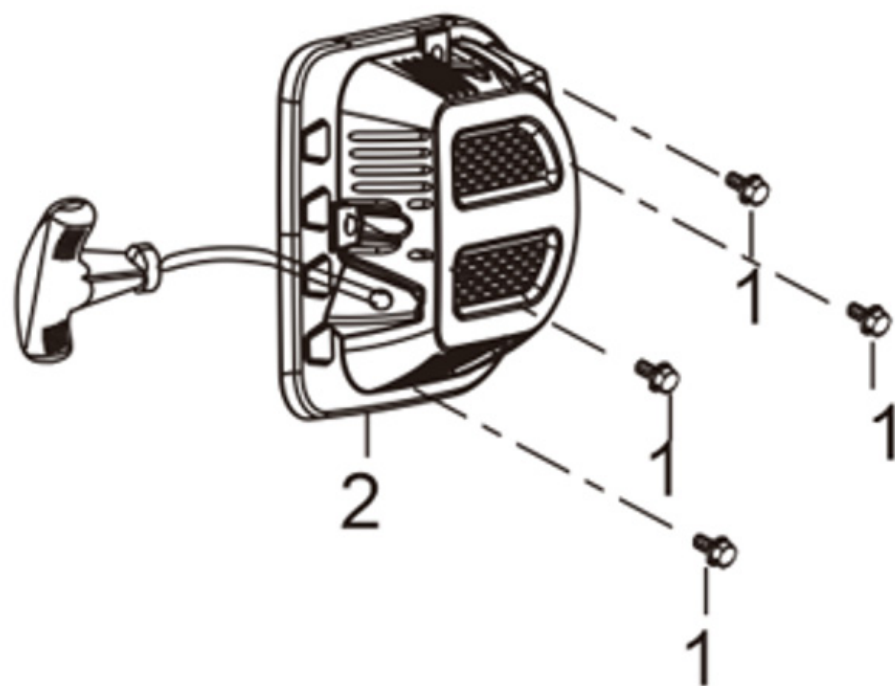
SL NO	PART NO	DESCRIPTION	SL NO	PART NO	DESCRIPTION
1	AM-R300-EE01	PISTON RING ASSY			
2	AM-R300-EE02	PISTON			
3	AM-R300-EE03	PISTON PIN			
4	AM-R300-EE04	PISTON PIN CLIP			
5	AM-R300-EE05	CONNECTING ROD			
6					
7					
8					
9					
10					
11					
12					
13					
14					
15					
16					

TRAIN, VALVE / CAMSHAFT SUBASSEMBLY - F



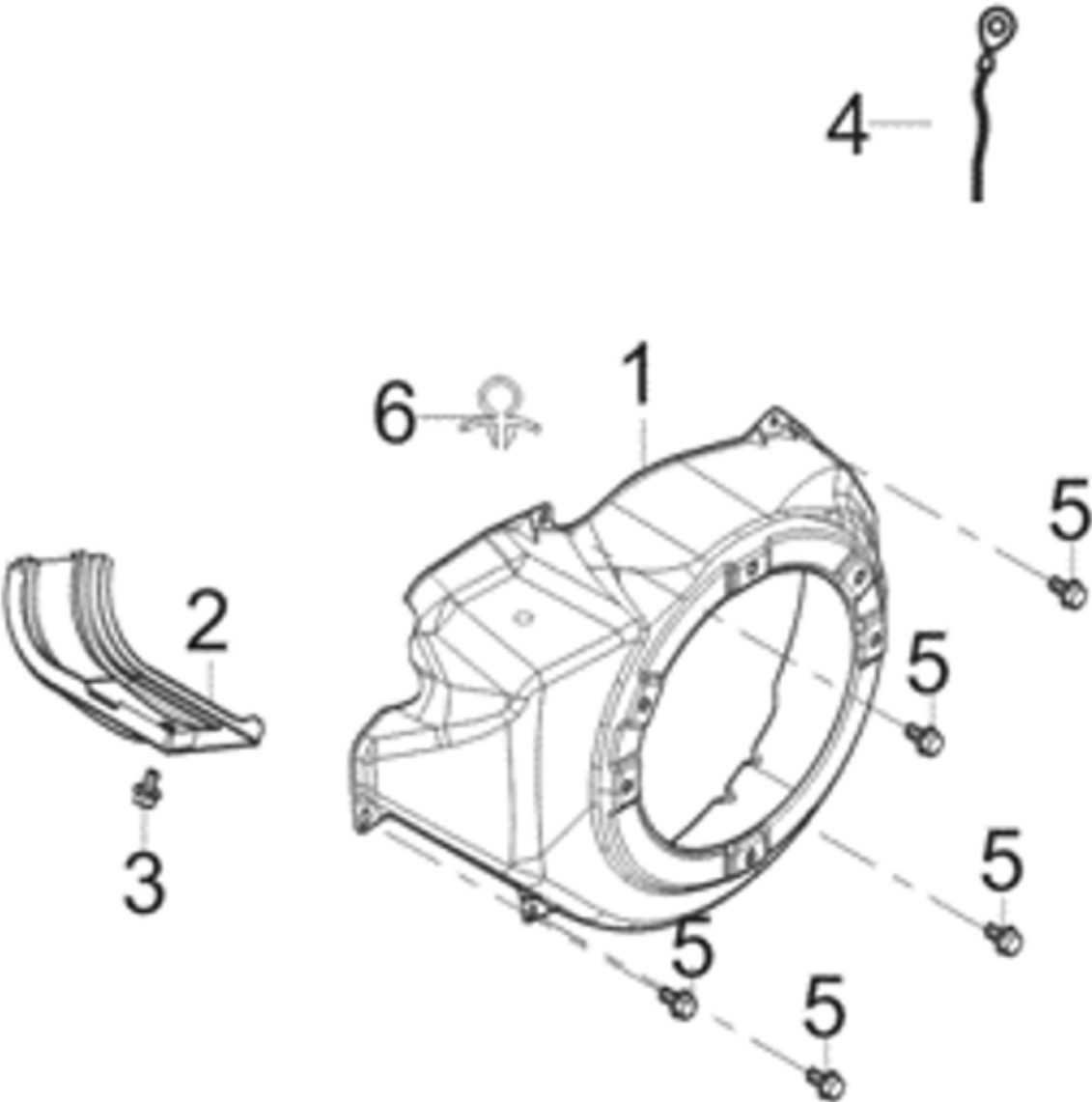
SL NO	PART NO	DESCRIPITON	SL NO	PART NO	DESCRIPITON
1	AM-R300-EF01	CAMSHAFT ASSY.	9	AM-R300-EF09	TAPPET VALVE
2	AM-R300-EF02	NA	10	AM-R300-EF10	VALVE LIFTER SUBASSEMBLY
3	AM-R300-EF03	VALVES SET	11	AM-R300-EF11	LIFTER STOPPER PLATE SUBASSEMBLY
4	AM-R300-EF04	NA	12	AM-R300-EF12	ROCKSHAFT BOLT
5	AM-R300-EF05	VALVE SPRING SEAT	13	AM-R300-EF13	VALVE ROCKER
6	AM-R300-EF06	VALVE LOCK CLAMP	14	AM-R300-EF14	VALVE ADJUSTING NUT
7	AM-R300-EF07	VALVE SPRING	15	AM-R300-EF15	VALVE LOCK NUT
8	AM-R300-EF08	SEAL GUIDE	16	AM-R300-EF16	VALVE SPRING RETAINER

STARTER,RECOIL - G



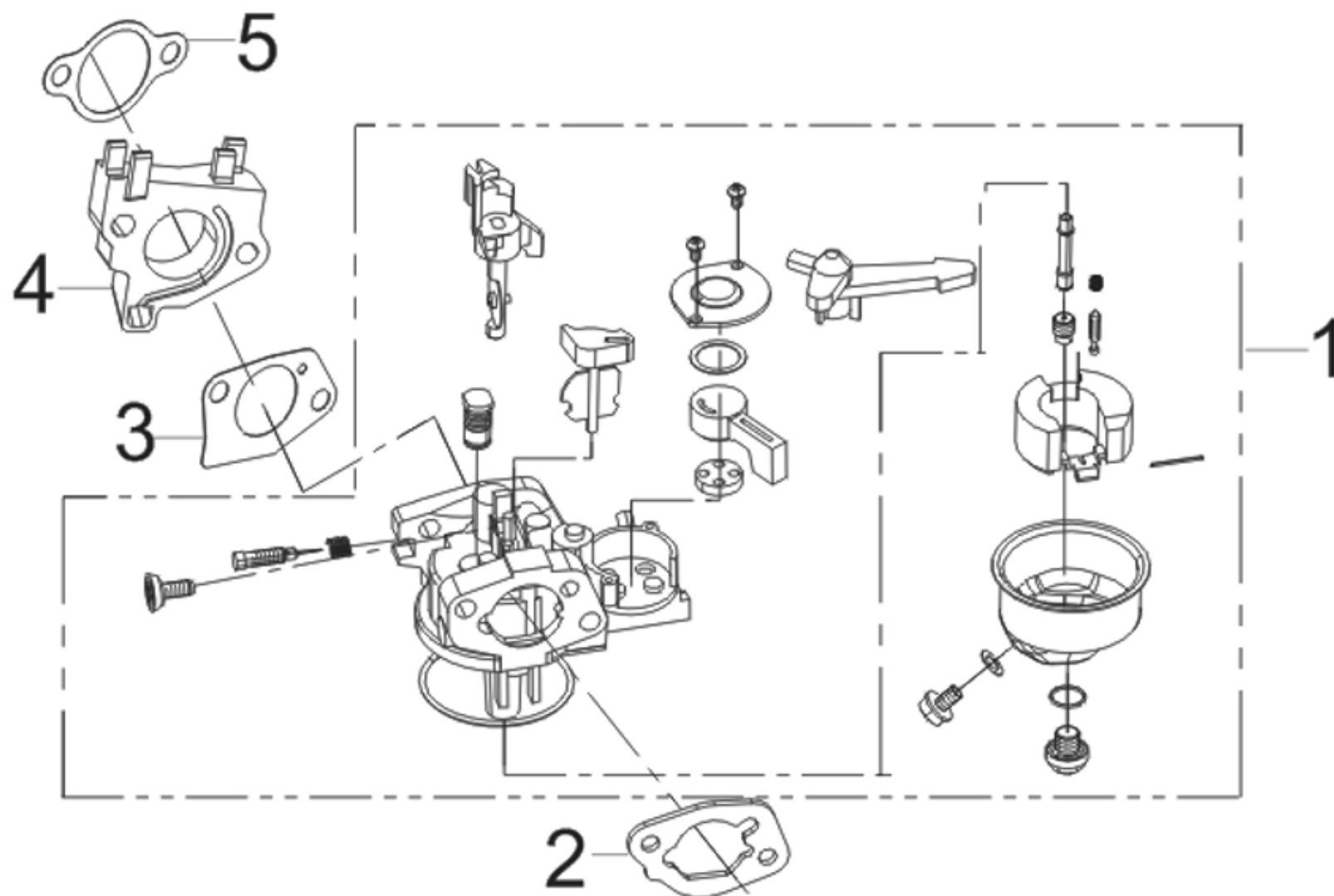
SL NO	PART NO	DESCRIPTION
1	AM-R300-EG01	BOLT
2	AM-R300-EG02	RECOIL STARTER ASSY
3		
4		
5		
6		
7		
8		
9		
10		
11		
12		
13		
14		
15		
16		

SHROUD / SHIELD,LOWER - H



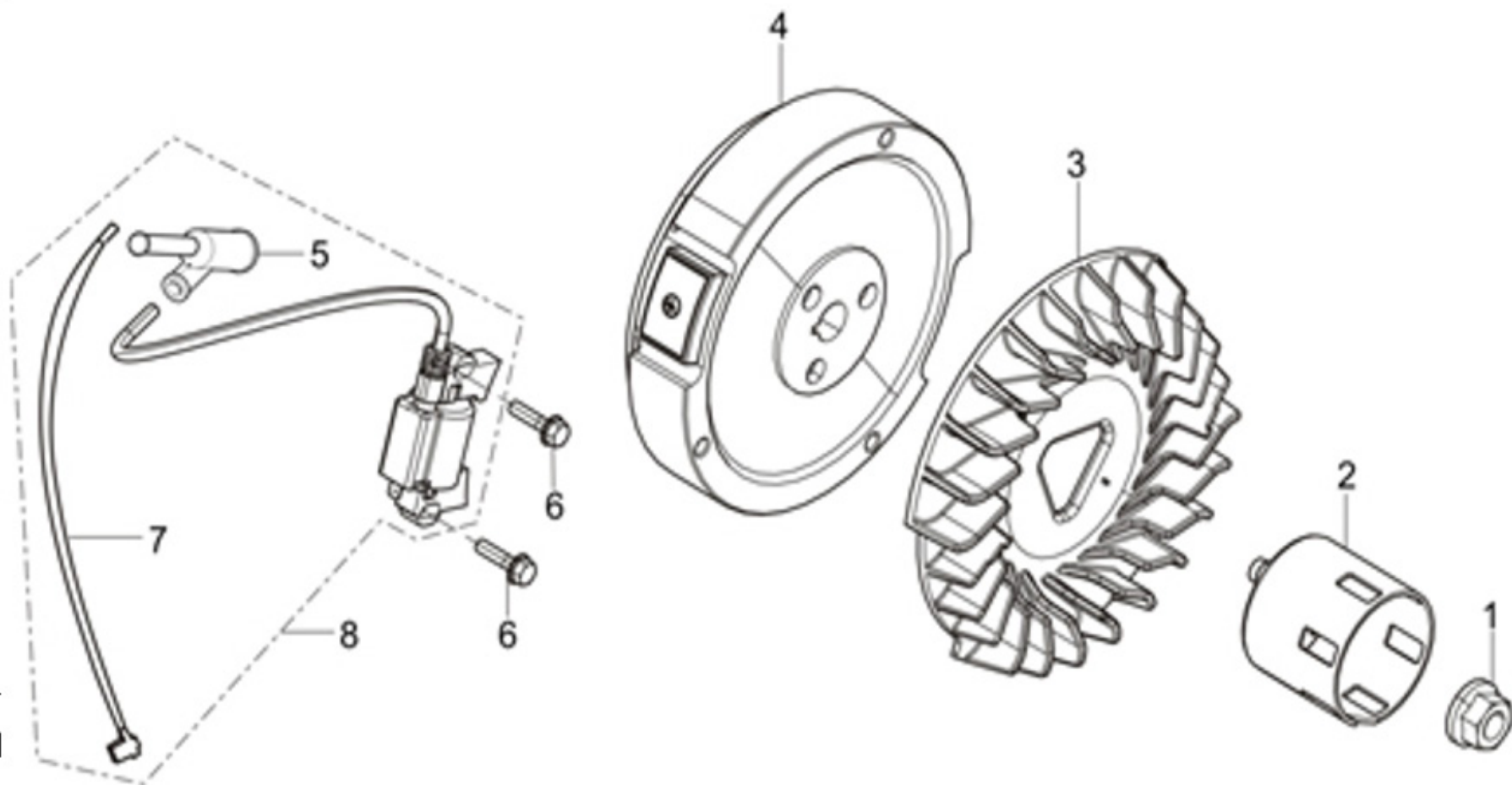
SL NO	PART NO	DESCRIPTION	SL NO	PART NO	DESCRIPTION
1	AM-R300-EH01	SHROUD			
2	AM-R300-EH02	CYLINDER BODY SHROUD			
3	AM-R300-EH03	BOLT			
4	AM-R300-EH04	STOP ENGINE SWITCH GROUNDING WIRE			
5	AM-R300-EH05	BOLT			
6	AM-R300-EH06	WIRE CLIP			
7					
8					
9					
10					
11					
12					
13					
14					
15					
16					

CARBURETOR ASSY. - J



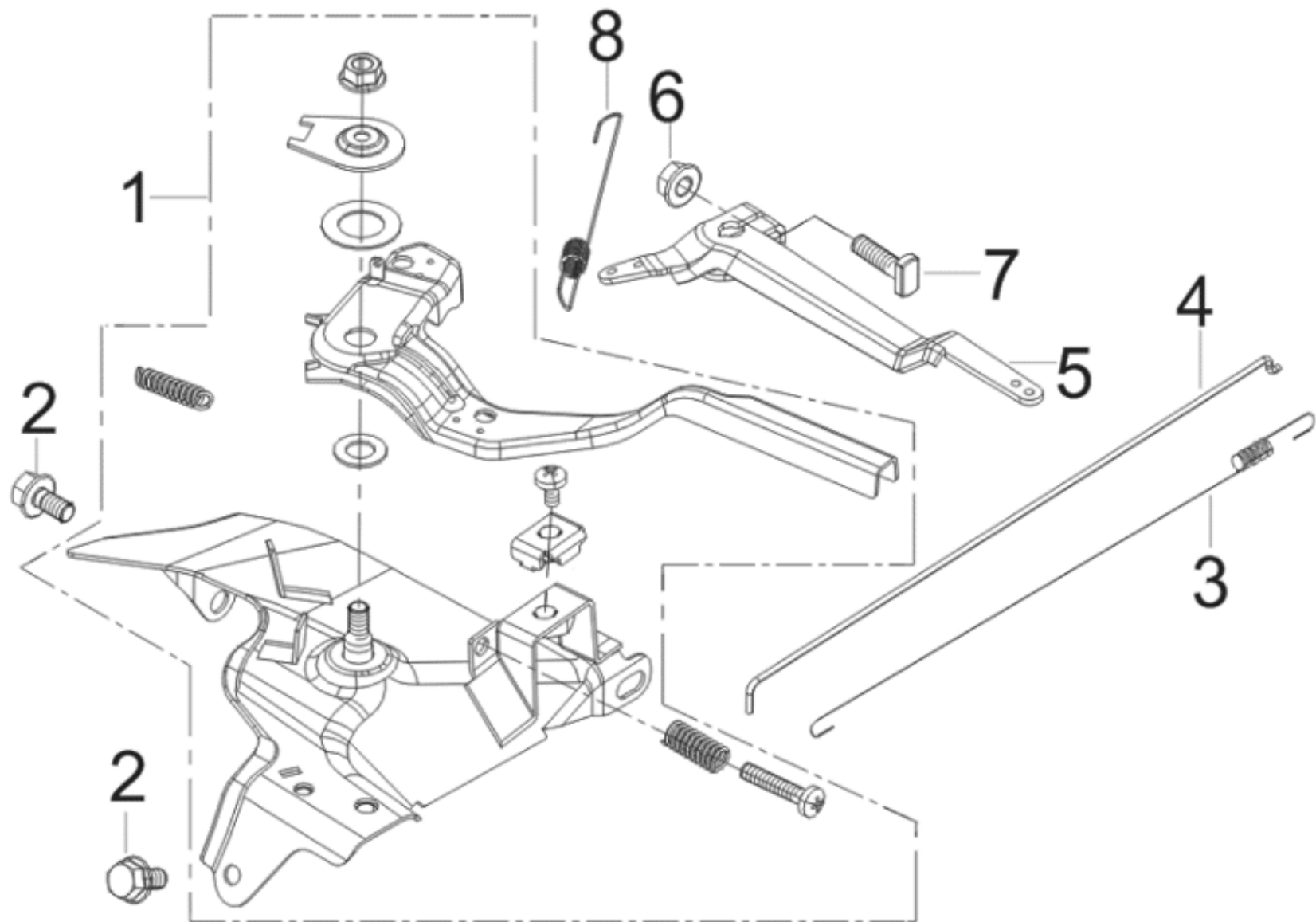
SL NO	PART NO	DESCRIPTION	SL NO	PART NO	DESCRIPTION
1	AM-R300-EJ01	CARBURETOR ASSY.			
2	AM-R300-EJ02	AIR CLEANER SEAL GASKET			
3	AM-R300-EJ03	CARBURETOR SEAL GASKET			
4	AM-R300-EJ04	CARBURETOR INSULATOR PLATE			
5	AM-R300-EJ05	INLET GASKET			
6					
7					
8					
9					
10					
11					
12					
13					
14					
15					
16					

FLYWHEEL / IMPELLER / STARTER PULLEY / IGNITION COIL - K



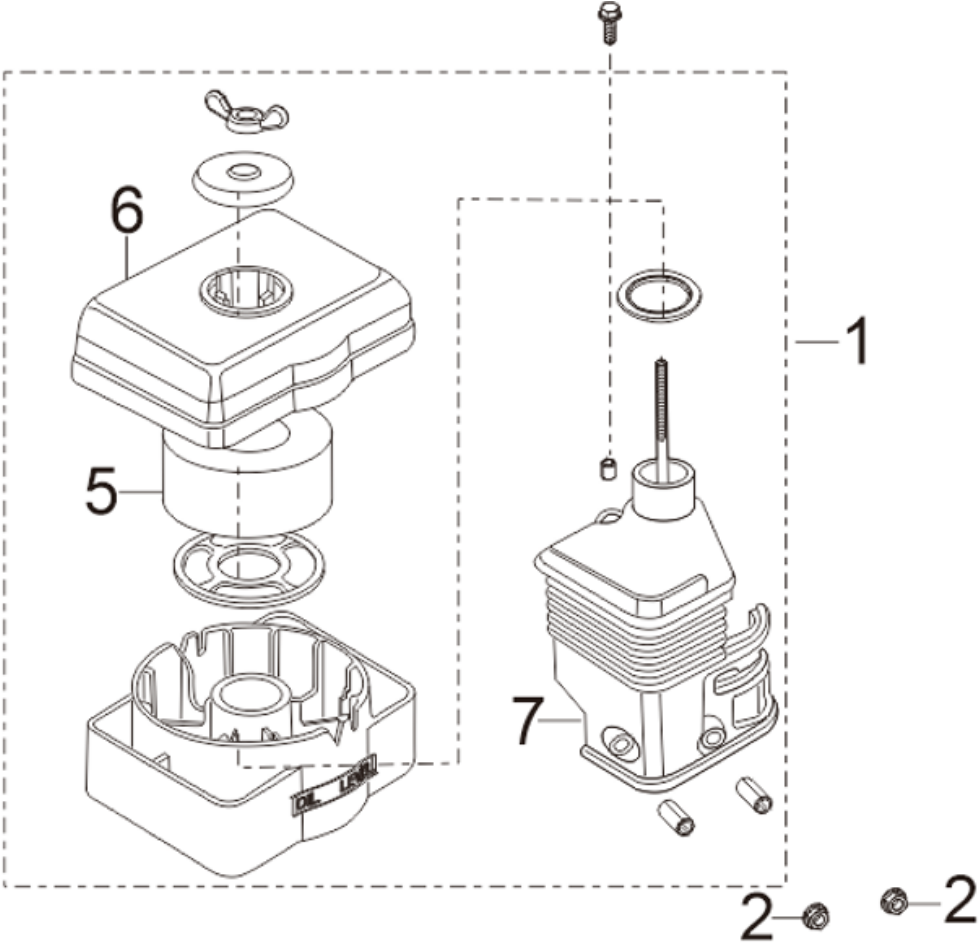
SL NO	PART NO	DESCRIPTION	SL NO	PART NO	DESCRIPTION
1	AM-R300-EK01	FLYWHEEL NUT			
2	AM-R300-EK02	STARTER PULLEY			
3	AM-R300-EK03	IMPELLER			
4	AM-R300-EK04	FLYWHEEL SUBASSEMBLY			
5	AM-R300-EK05	IGNITION COIL CAP			
6	AM-R300-EK06	BOLT			
7	AM-R300-EK07	IGNITION COIL CABLE			
8	AM-R300-EK08	IGNITION COIL			
9					
10					
11					
12					
13					
14					
15					
16					

CONTROL ASSY, THROTTLE - L



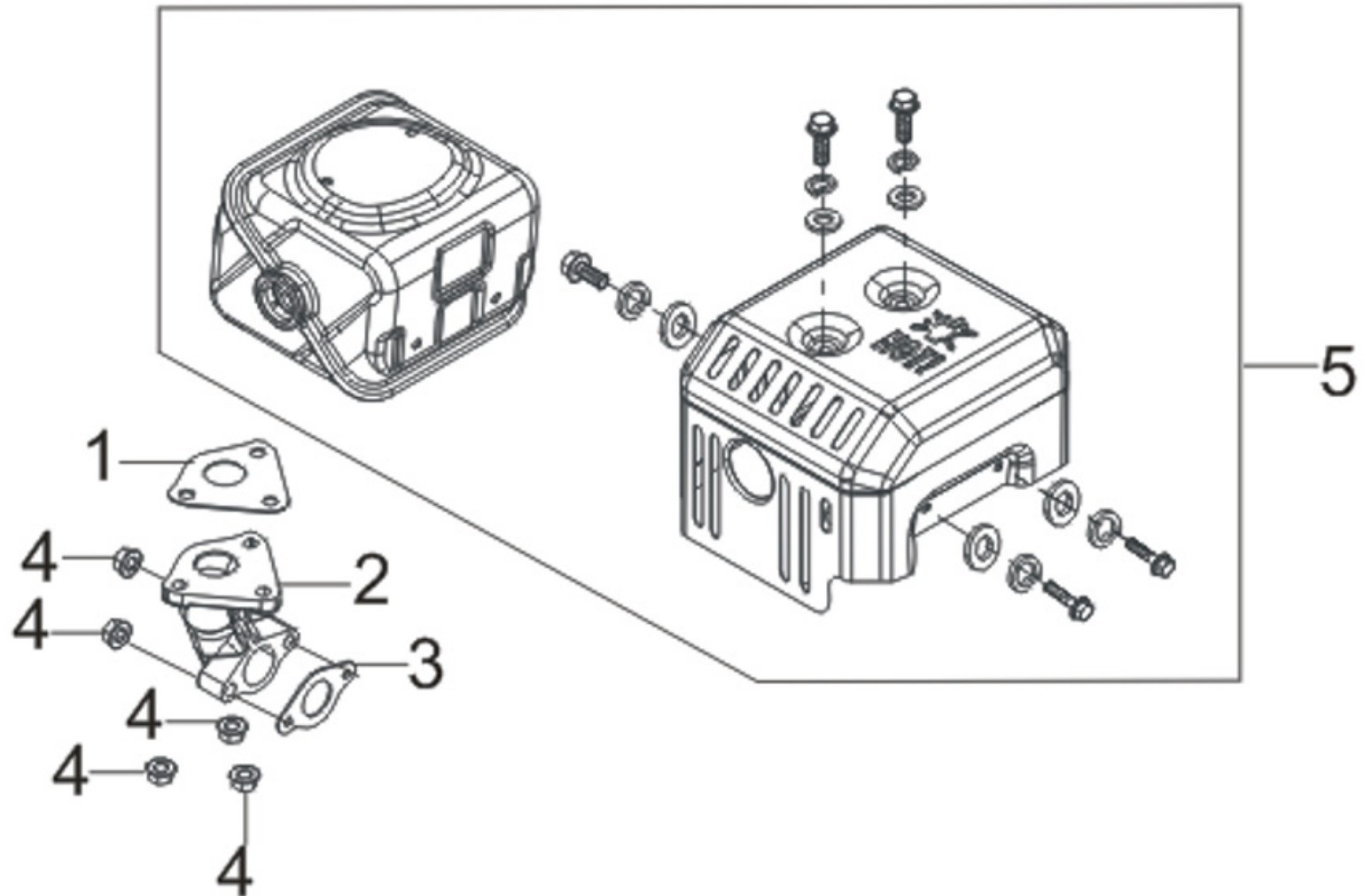
SL NO	PART NO	DESCRIPTION	SL NO	PART NO	DESCRIPTION
1	AM-R300-EL01	THROTTLE CONTROL ASSY			
2	AM-R300-EL02	BOLT			
3	AM-R300-EL03	THROTTLE VALVE RETURNING SPRING			
4	AM-R300-EL04	GOVERNEOR ROD			
5	AM-R300-EL05	GOVERNOR BRACKET SUBASSEMBLY			
6	AM-R300-EL06	HEXAGON NUT WITH FLANGE			
7	AM-R300-EL07	GOVERNOR SUPPORT BOLT			
8	AM-R300-EL08	GOVERNOR SPRING			
9					
10					
11					
12					
13					
14					
15					
16					

AIR CLEANER - M



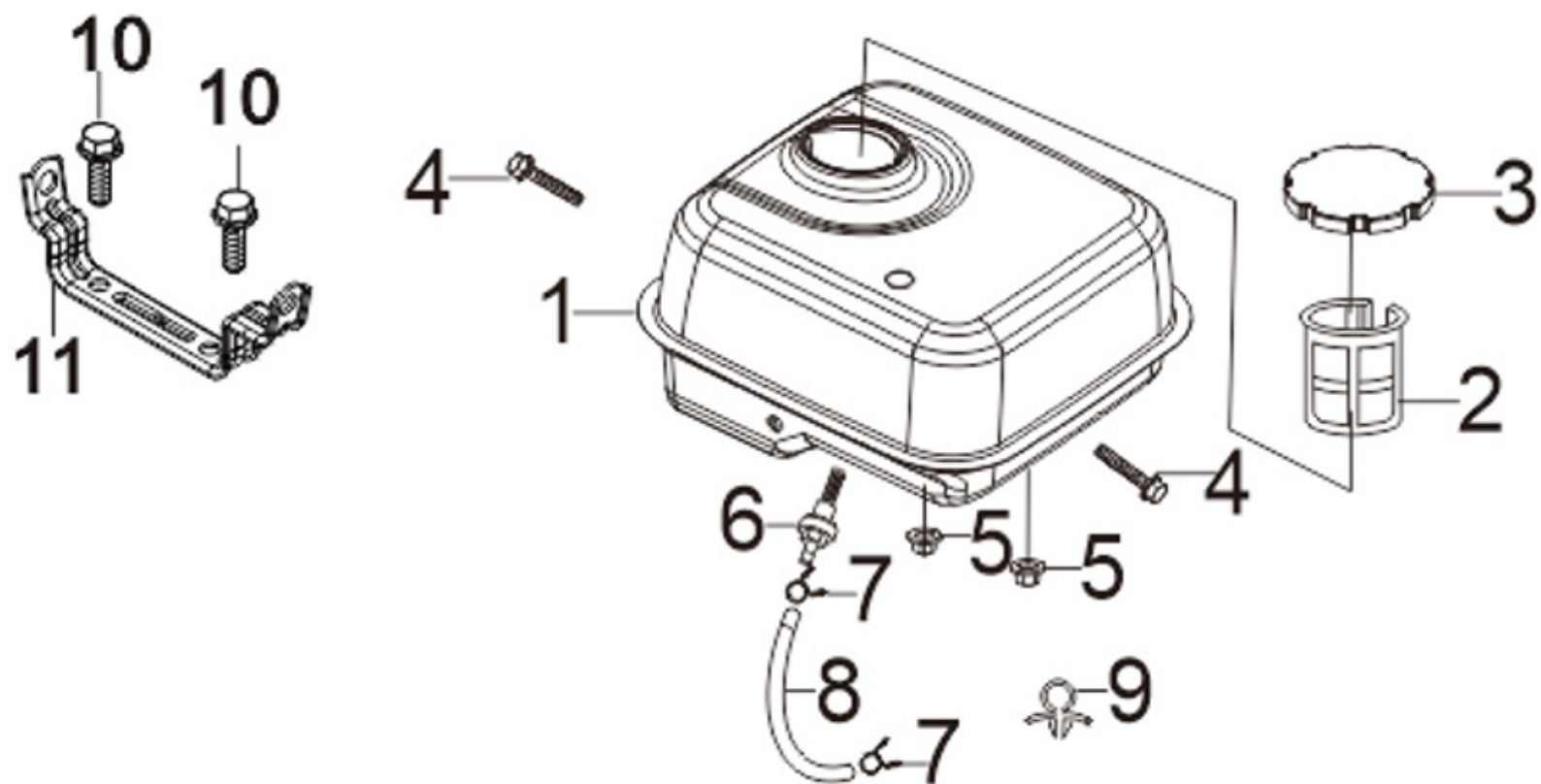
SL NO	PART NO	DESCRIPTION
1	AM-R300-EM01	AIR CLEANER
2	AM-R300-EM02	HEXAGON NUT WITH FLANGE
3		
4		
5		
6		
7		
8		
9		
10		
11		
12		
13		
14		
15		
16		

MUFFLER ASSY -N



SL NO	PART NO	DESCRIPTION	SL NO	PART NO	DESCRIPTION
1	AM-R300-EN01	MUFFLER GASKET			
2	AM-R300-EN02	EXHAUST PIPE			
3	AM-R300-EN03	EXHAUST OUTLET GASKET			
4	AM-R300-EN04	HEXAGON NUT WITH FLANGE			
5	AM-R300-EN05	MUFFLER ASSY.			
6					
7					
8					
9					
10					
11					
12					
13					
14					
15					
16					

FUEL TANK ASSY P



SL NO	PART NO	DESCRIPTION	SL NO	PART NO	DESCRIPTION
1	AM-R300-EP01	FUEL TANK			
2	AM-R300-EP02	FUEL STRAINER			
3	AM-R300-EP03	FUEL TANK COVER			
4	AM-R300-EP04	BOLT			
5	AM-R300-EP05	HEXAGON NUT WITH FLANGE			
6	AM-R300-EP06	FUEL TANK OIL OUTLET SUBASSEMBLY			
7	AM-R300-EP07	COLLAR			
8	AM-R300-EP08	FUEL TUBE			
9	AM-R300-EP09	WIRE CLIP			
10	AM-R300-EP10	HEXAGON BOLT			
11	AM-R300-EP11	FUEL TANK INSTALLTION FRAME			
12					
13					
14					
15					
16					

WARRANTY CARD

CUSTOMER COPY

DATE _____	DATE OF DELIVERY _____	DEALERS OFFICIAL SEAL	DEALERS SIGN _____
PURCHASERS NAME & ADDRESS _____ _____ _____	<div>CUSTOMER SIGN</div>	<div></div>	
PRODUCT NAME	PRODUCT SERIAL NO.	INVOICE/DN NO.	
<div></div>	<div></div>	<div></div>	
I/Will accept the terms and conditions of warranty as in the warranty card			

DEALERS COPY

DATE _____	DATE OF DELIVERY _____	DEALERS OFFICIAL SEAL	DEALERS SIGN _____
PURCHASERS NAME & ADDRESS _____ _____ _____	<div>CUSTOMER SIGN</div>	<div></div>	
PRODUCT NAME	PRODUCT SERIAL NO.	INVOICE/DN NO.	
<div></div>	<div></div>	<div></div>	
I/Will accept the terms and conditions of warranty as in the warranty card			

COMPANY COPY

DATE _____	DATE OF DELIVERY _____	DEALERS OFFICIAL SEAL	DEALERS SIGN _____
PURCHASERS NAME & ADDRESS _____ _____ _____	<div>CUSTOMER SIGN</div>	<div></div>	
PRODUCT NAME	PRODUCT SERIAL NO.	INVOICE/DN NO.	
<div></div>	<div></div>	<div></div>	
I/Will accept the terms and conditions of warranty as in the warranty card			

1. LIMITED WARRANTY PERIOD : For a period of six months from the date of Sale / delivery of the product which ever is earlier. 2. LIMITED WARRANTY OBLIGATION : Replacement of defective part(s) by authorized dealer are free of charges. If found defective by reasons of defective material / poor workmanship, parts will be replaced and there will be no value re-imbursement. 3. TERMS & CONDITIONS : a. Claims under warranty will be accepted on submission of Warranty Card duly filled and stamped by authorized dealer together with the original purchase document. : b. Shipping / transportation / Incidental charges incurred in replacing defective parts under warranty shall be borne by the purchaser

WARRANTY null & void if
(i) Lack of maintenance, (ii) Incorrect use of the machine or tampering, (iii) Use of non-genuine spare parts, (iv) Usage of acids, solvents, or any flammable materials, (v) Non-usage of filter water / clear water / soft water & using water above 40°C temperature, (vi) While using the pressure washers to draw water which is contaminated with dust & solvents (eg. paint thinners, gasoline, oil, etc.), (vii) Repair done by unauthorized service people, (viii) Those parts subject to wear & tear due to normal operations and plastic parts, rubber items etc, (ix) Loose connections, faulty electrical fixtures & fluctuations in power supply.
4. Should any failure occur during or after the warranty period, customer does not have the right to interrupt payment / price discount.
5. Incidental or consequential damages like inconvenience commercial loss, loss of tie, mental agony etc.
6. Loss of any nature due to operation or non-operation is not covered under warranty.
7. All free service are at Dealer's service point only.
8. Warranty ceases if service is not done periodically.
9. The attached card should be completed and returned to Ratnagiri Impex Pvt. Ltd. for registration immediately after sale / delivery.
10. The warranty is void unless you register the warranty card with Ratnagiri Impex Pvt. Ltd.
11. The decision of Ratnagiri Impex Pvt. Ltd., in settling the warranty is final in all respects.
12. All disputes are subject to Bangalore Courts Jurisdiction

1. LIMITED WARRANTY PERIOD : For a period of six months from the date of Sale / delivery of the product which ever is earlier. 2. LIMITED WARRANTY OBLIGATION : Replacement of defective part(s) by authorized dealer are free of charges. If found defective by reasons of defective material / poor workmanship, parts will be replaced and there will be no value re-imbursement. 3. TERMS & CONDITIONS : a. Claims under warranty will be accepted on submission of Warranty Card duly filled and stamped by authorized dealer together with the original purchase document. : b. Shipping / transportation / Incidental charges incurred in replacing defective parts under warranty shall be borne by the purchaser.
WARRANTY null & void if
(i) Lack of maintenance, (ii) Incorrect use of the machine or tampering, (iii) Use of non-genuine spare parts, (iv) Usage of acids, solvents, or any flammable materials, (v) Non-usage of filter water / clear water / soft water & using water above 40°C temperature, (vi) While using the pressure washers to draw water which is contaminated with dust & solvents (eg. paint thinners, gasoline, oil, etc.), (vii) Repair done by unauthorized service people, (viii) Those parts subject to wear & tear due to normal operations and plastic parts, rubber items etc, (ix) Loose connections, faulty electrical fixtures & fluctuations in power supply.
4. Should any failure occur during or after the warranty period, customer does not have the right to interrupt payment / price discount.
5. Incidental or consequential damages like inconvenience commercial loss, loss of tie, mental agony etc.
6. Loss of any nature due to operation or non-operation is not covered under warranty.
7. All free service are at Dealer's service point only.
8. Warranty ceases if service is not done periodically.
9. The attached card should be completed and returned to Ratnagiri Impex Pvt. Ltd. for registration immediately after sale / delivery.
10. The warranty is void unless you register the warranty card with Ratnagiri Impex Pvt. Ltd.
11. The decision of Ratnagiri Impex Pvt. Ltd., in settling the warranty is final in all respects.
12. All disputes are subject to Bangalore Courts Jurisdiction

1. LIMITED WARRANTY PERIOD : For a period of six months from the date of Sale / delivery of the product which ever is earlier. 2. LIMITED WARRANTY OBLIGATION : Replacement of defective part(s) by authorized dealer are free of charges. If found defective by reasons of defective material / poor workmanship, parts will be replaced and there will be no value re-imbursement. 3. TERMS & CONDITIONS : a. Claims under warranty will be accepted on submission of Warranty Card duly filled and stamped by authorized dealer together with the original purchase document. : b. Shipping / transportation / Incidental charges incurred in replacing defective parts under warranty shall be borne by the purchaser.
WARRANTY null & void if
(i) Lack of maintenance, (ii) Incorrect use of the machine or tampering, (iii) Use of non-genuine spare parts, (iv) Usage of acids, solvents, or any flammable materials, (v) Non-usage of filter water / clear water / soft water & using water above 40°C temperature, (vi) While using the pressure washers to draw water which is contaminated with dust & solvents (eg. paint thinners, gasoline, oil, etc.), (vii) Repair done by unauthorized service people, (viii) Those parts subject to wear & tear due to normal operations and plastic parts, rubber items etc, (ix) Loose connections, faulty electrical fixtures & fluctuations in power supply.
4. Should any failure occur during or after the warranty period, customer does not have the right to interrupt payment / price discount.
5. Incidental or consequential damages like inconvenience commercial loss, loss of tie, mental agony etc.
6. Loss of any nature due to operation or non-operation is not covered under warranty.
7. All free service are at Dealer's service point only.
8. Warranty ceases if service is not done periodically.
9. The attached card should be completed and returned to Ratnagiri Impex Pvt. Ltd. for registration immediately after sale / delivery.
10. The warranty is void unless you register the warranty card with Ratnagiri Impex Pvt. Ltd.
11. The decision of Ratnagiri Impex Pvt. Ltd., in settling the warranty is final in all respects.
12. All disputes are subject to Bangalore Courts Jurisdiction

FREE SERVICE COUPON (30DAYS/30HRS. WHICHEVER IS EARLIER)

MODEL	<input type="text"/>	SERIAL NUMBER	<input type="text"/>
PDI DATE	SERVICE NO.	PURCHASE BILL NO.	DATE
<input type="text"/>	<input type="text"/>	<input type="text"/>	<input type="text"/>
DEALERS OFFICE SEAL	OPERATIONS		
<input type="text"/>	<div> <div> 1. Check and test the fuel mixture 3. Check , clean and adjust the spark plug 5. Check and sparken the cutting tools 7. Start and check the noise, vibration, loosen etc.. </div> <div> 2. check and clean the air filter 4. Check and adjust the carburetor tuning 6. Product familiarisation on usage 8. Routine maintenance and shortage. </div> </div>		

FREE SERVICE COUPON (30DAYS/30HRS. WHICHEVER IS EARLIER)

MODEL	<input type="text"/>	SERIAL NUMBER	<input type="text"/>
PDI DATE	SERVICE NO.	PURCHASE BILL NO.	DATE
<input type="text"/>	<input type="text"/>	<input type="text"/>	<input type="text"/>
DEALERS OFFICE SEAL	OPERATIONS		
<input type="text"/>	<div> <div> 1. Check and test the fuel mixture 3. Check , clean and adjust the spark plug 5. Check and sparken the cutting tools 7. Start and check the noise, vibration, loosen etc.. </div> <div> 2. check and clean the air filter 4. Check and adjust the carburetor tuning 6. Product familiarisation on usage 8. Routine maintenance and shortage. </div> </div>		

FREE SERVICE COUPON (30DAYS/30HRS. WHICHEVER IS EARLIER)

MODEL	<input type="text"/>	SERIAL NUMBER	<input type="text"/>
PDI DATE	SERVICE NO.	PURCHASE BILL NO.	DATE
<input type="text"/>	<input type="text"/>	<input type="text"/>	<input type="text"/>
DEALERS OFFICE SEAL	OPERATIONS		
<input type="text"/>	<div> <div> 1. Check and test the fuel mixture 3. Check , clean and adjust the spark plug 5. Check and sparken the cutting tools 7. Start and check the noise, vibration, loosen etc.. </div> <div> 2. check and clean the air filter 4. Check and adjust the carburetor tuning 6. Product familiarisation on usage 8. Routine maintenance and shortage. </div> </div>		

DOS & DONTs

1. Always read the instruction manual supplied along with the equipments and understand the correct installation and operating procedures before attempting to use the equipments.
2. It is important to use the personal protection equipments such as head helmet with visor, ear defenders, goggles, safety gloves, cut resistant shoes, trousers and jackets while operating potentially dangerous machines
3. Avoid untrained persons using the equipments. Children must not be allowed to handle these equipments
4. Always use genuine spares and accessories in repairs and usage to derive maximum life of the equipments.
5. Always keep the equipments in good working condition to minimize loss of output as well as to reduce the pollution and save the environment
6. Do not use the machine within range of persons unless they wear protective clothing
7. Do not operate the machine when fatigued or under the influence of alcohol or drugs
8. When the machine is running, please maintain a constant water supply. Without water circulation will damage the sealing rings of the machine.
9. For more query kindly contact for our Service Center/Dealer/ franchise

Agrimate Army For Pest Control

ANY WHERE - ANY TIME - ANY CROP



Marketed by:

**ratnagiri
impex**

BRINGING YOU THE FUTURE... NOW

RATNAGIRI IMPEX PVT., LTD.,

Annapurna House, #1 / 1G, 7th Cross, New
Guddadahalli

Mysore Road, Bangalore - 560 026

Missed Call : 7393 938 938

Email: ask@agrimart.in