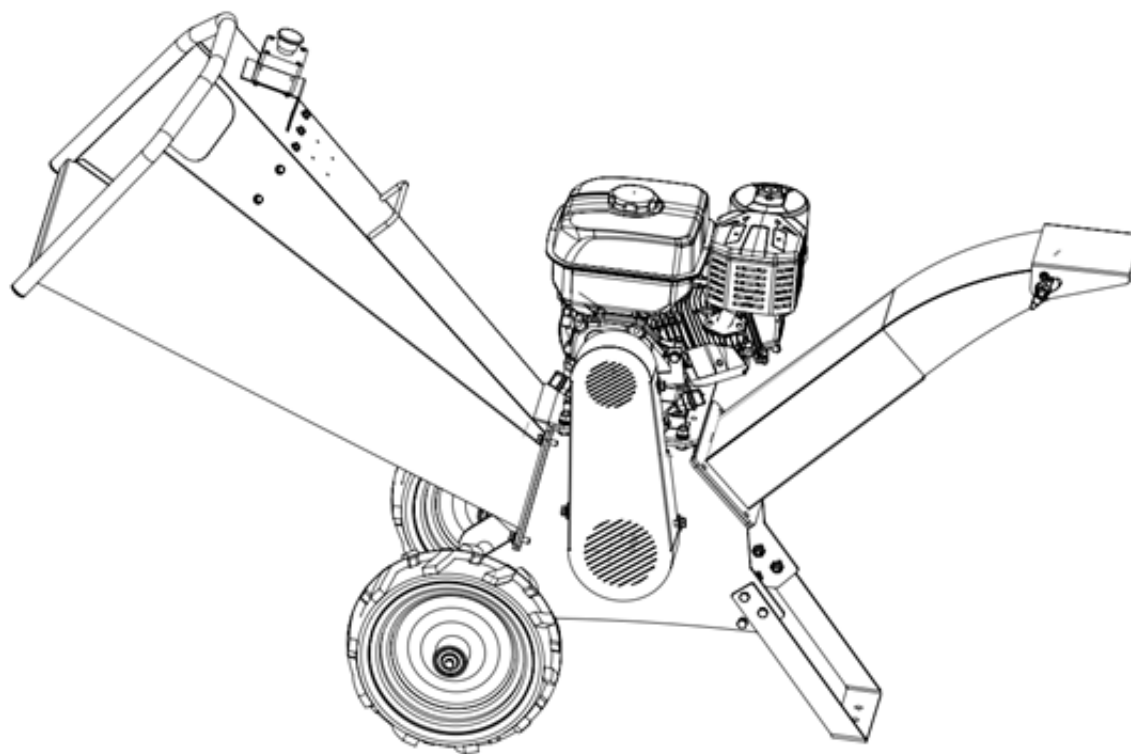


Wood Chipper/Shredder AM-WCS-170FP



I. Safety precautions

1. Training

- a. Read the operating instructions carefully before operating the machine. Fully familiar with all the operating mechanisms and the machine to use correctly, master how to shut down and quickly separate the operating mechanism.
- b. Children shall not be allowed to operate the machine. Adults without reading the instructions are never allowed to use the machine.
- c. It is strictly prohibited to operate the machine when there are onlookers nearby. Keep the work area empty, especially for childlessness and pets.
- d. Carbon monoxide can be very dangerous in a closed space! Run the machine in an enclosed space as the engine exhaust contains colorless, tasteless carbon monoxide gases.
- e. Hand or body parts or clothing shall not enter the feeding tank, discharge port or near any moving parts.
- f. Turn off the engine before inspecting or repairing any parts of the machine, and be sure that all moving parts have stopped running.
- g. Do not store clothes and tools on the machine.
- h. When crushing dry branches, the maximum should not exceed 40mm.
- i. If the branches and leaves are too thick, please trim them first, and then crush them separately. When crushing a branch near the maximum diameter, hold the feed with your hand to avoid the danger of swinging back and forth.
- j. The emergency stop switch is only used for emergency situations. For normal shutdown, first reduce the gasoline engine speed.

2. Prepare

- a. This branch grinder shall not be used for other purposes than those stated in the use manual.
- b. During any manipulation, such as: preparation, operation and maintenance, durable gloves, protective glasses, ear muffs and protective masks must be worn.
- c. In the flat and open, with smooth air circulation, and has a solid flat operation machine. Check the area where the machine will be used and remove all debris.
- d. Before starting the machine, check that all the screws, nuts, bolts and other fasteners are properly fastened and that the guards and screen are in the correct position. Replace the damaged or unclear safety signs and operation labels.
- e. Before operation, check whether the emergency stop button can work normally.
 - . If it fails, it should be replaced immediately.
- f. Fuel is flammable and explosive, and special care should be taken when disposing of fuel.
 - 1) Can only be stored in special containers.
 - 2) Never open the fuel tank or fill fuel during engine operation. Let the engine cool adequately before adding fuel.
 - 3) Smoking is strictly prohibited.
 - 4) Never fuel the machine indoors.
 - 5) It is strictly prohibited to store machines or fuel containers where there are open fires, such as where there are hot water heaters.
 - 6) If fuel overflows, do not start the engine and remove the machine out of the fuel overflow area before starting.
 - 7) Fill the rear refueling cover and tighten the fuel tank cover.










3. Operation

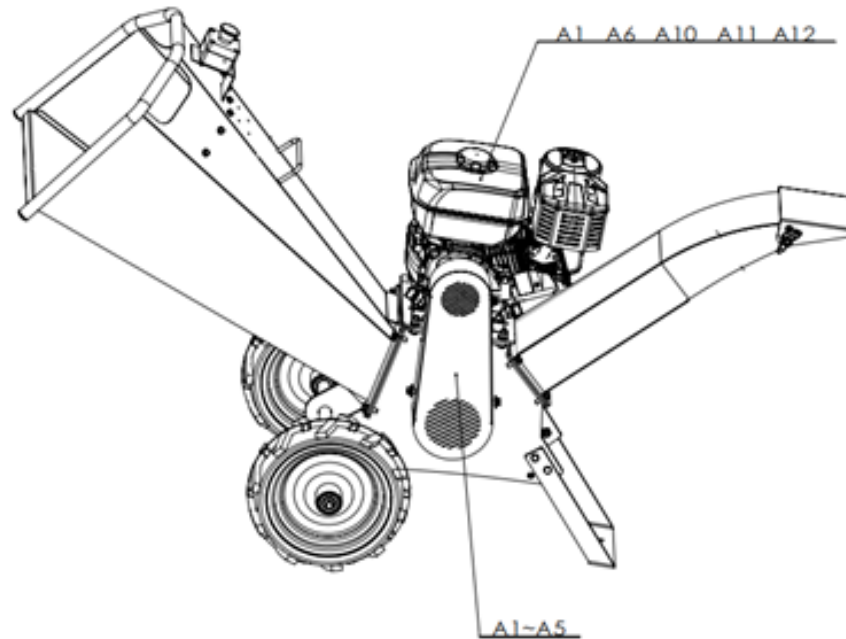
- a. Before starting the machine, be sure that the machine feeding box is empty.
- b. Keep your face and body away from the feeding mouth and stand on both sides of the feeding mouth.
- c. Always keep your balance and stand steadily. Do not step too big, do not stand on the plane higher than the machine base surface when feeding.
- d. Always keep a safe distance from the discharge area when operating the machine.
- e. When adding materials to the machine, special attention should be paid not to include metal parts, stones, bottles, jars or other foreign materials.
- f. If the cutting mechanism touches a foreign body or the machine starts, causing abnormal sound or vibration, turn off the engine immediately and stop the machine working. And perform the following treatment:
 - 1) Check the damage condition.
 - 2) How to replace or repair the damaged parts.
 - 3) Check and tighten any loose parts.
 - 4) No attempt to repair the machine unless you are qualified.
- g. Do not let the processed materials accumulate in the discharge area, which will hinder the normal discharge area and cause the material to recoil from the feeding port.
- h. If the machine is blocked, close the engine and disconnect the spark plug wire before clearing the plug.
- i. Ensure that all protective devices and conductors are in normal position and in good working condition.
- j. Do not adjust the engine governor of the machine; the governor controls the maximum safe running speed and protects the engine and all motor components from damage caused by overspeed. If there is a problem, please seek the authority for repair.
- k. Keep the engine free of debris and other accumulation to prevent engine damage or possible fire.
- l. Do not transport the machine when the engine is running.
- m. Turn off the engine whenever you leave the working position.
- n. In case of an emergency, please take the emergency stop button in time.

4. Maintenance and storage

- a. Keep the machine, additional devices, and equipment in a safe working condition.
- b. At regular intervals, check for the proper tightening of the shear bolts, the engine fixing bolts, and other bolts to ensure that the machine is in a safe working condition.
- c. Check and check whether the emergency stop switch can work normally and replace it immediately if it fails.
- d. Turn off the engine before checking or repairing any parts of the machine and be sure that all moving parts have stopped running.
- e. The machine shall be stored indoors and away from fire, and the engine shall be cooled before the machine is stored indoors.
- f. If the machine is to be stored for a long time, the user manual should always be kept as an important information.
- g. Fix the knife roller before cleaning or maintaining the roller to ensure it cannot turn itself.

Safety warning mark

| | |
|---|---|
| <p>A1 warning!The wood chipper is a dangerous tool.Careless or incorrect use can cause serious or fatal injuries to users or others.Please read the instructions carefully and make sure you understand the instructions before using them.</p> |   |
| <p>A2 throws may cause serious injury, and non-operators should stay away from the machine at work.Operation is more than 10 meters away from the bystander.</p> |   |
| <p>A3 Always wear goggles and earmuffs.Always wear protective gloves.</p> |   |
| <p>A4 Do not open or remove the protection device while the engine is running.</p> |   |
| <p>A5 No stampede is allowed.</p> |  |



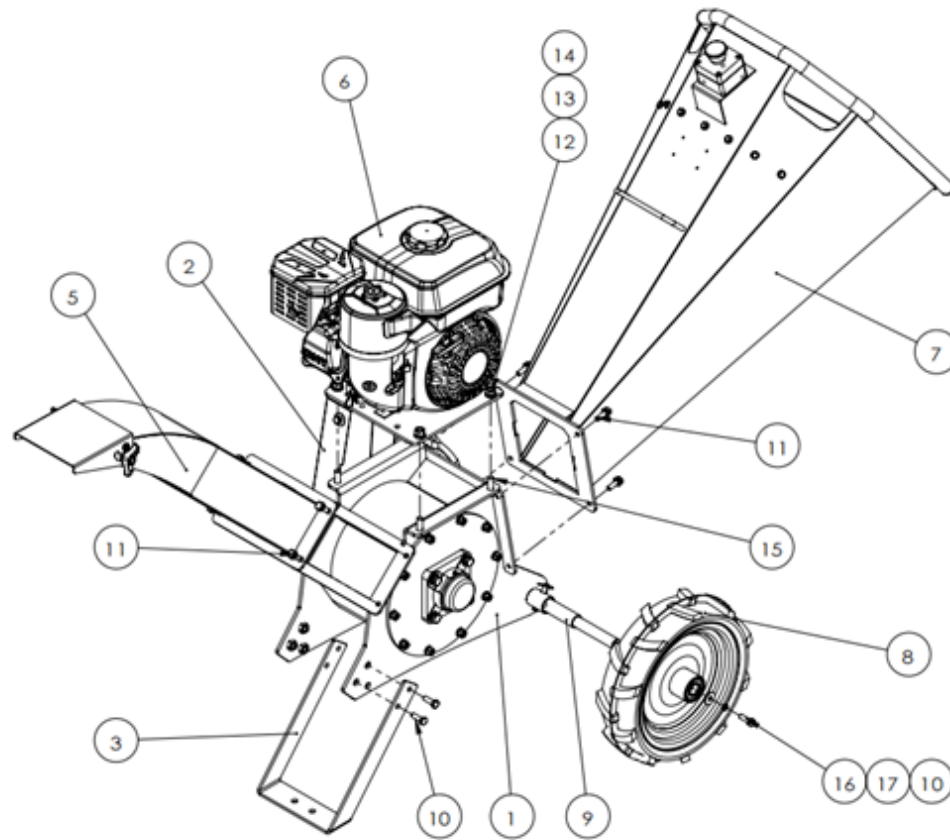
TECHNICAL SPECIFICATIONS

| | |
|------------------------|---------------|
| MODEL | AM-WCS-170FP |
| ENGINE | AM-170FP |
| DISPLACEMENT | 212CC |
| MAX. POWER | 4.3KW/3600RPM |
| MAX. CHIPPING CAPACITY | 65MM |
| MAX, BLADE SPEED | 2450RPM |
| WALKING WHEEL | 5.00 -9 |

Installation Instructions

Assembly after unpacking

The main parts of the branch mill have been installed before leaving the factory. Remove the split parts in the packing box before use, and fill the machine oil and fuel oil according to the installation diagram. Note: Because some machine parts are relatively heavy, please contact the seller or someone with certain professional knowledge and ability to guide the machine to ensure safety.



Installation steps:

- a. Install the support foot of No.3 on the No.1 crushing room and lock firmly.
- b. Install the wheel shaft of serial number 9 and the tire of serial number 8 on the crushing room and lock and secure.
- c. Install the incoming hopper of No.7 and the outgoing hopper of No.5 on the crushing chamber and secure by the bolt cushion assembly of No.11.

Tip: due to the variety of models, the power configuration, the product is constantly improved, the appearance may be inconsistent with the manual, the specific product shall prevail

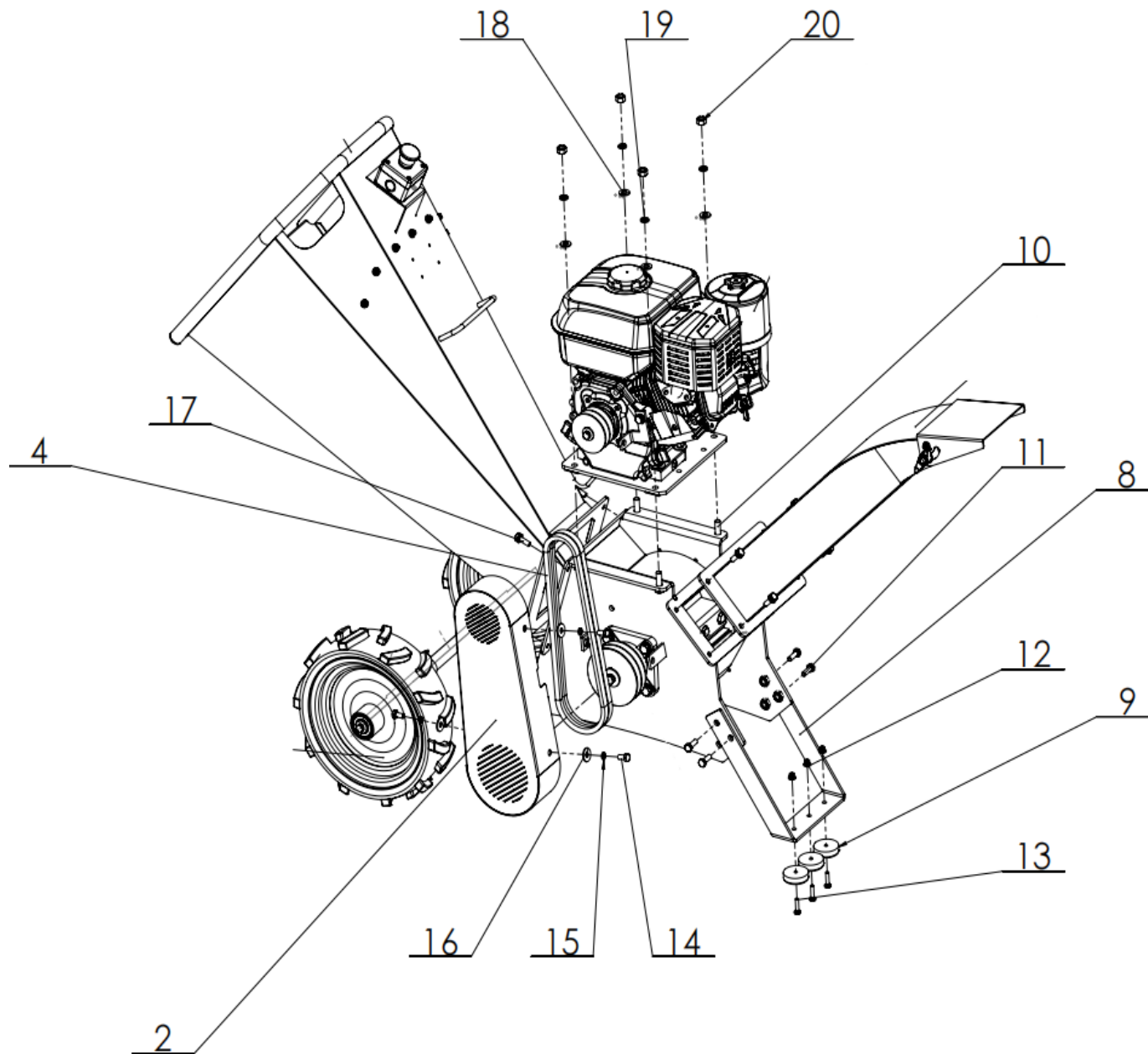
Operating instructions

Before the factory, but users should check and adjust the machine so that the shredder can be better used.

1. Gasoline machine**1.1 Check and refueling****(1) Check the engine oil**

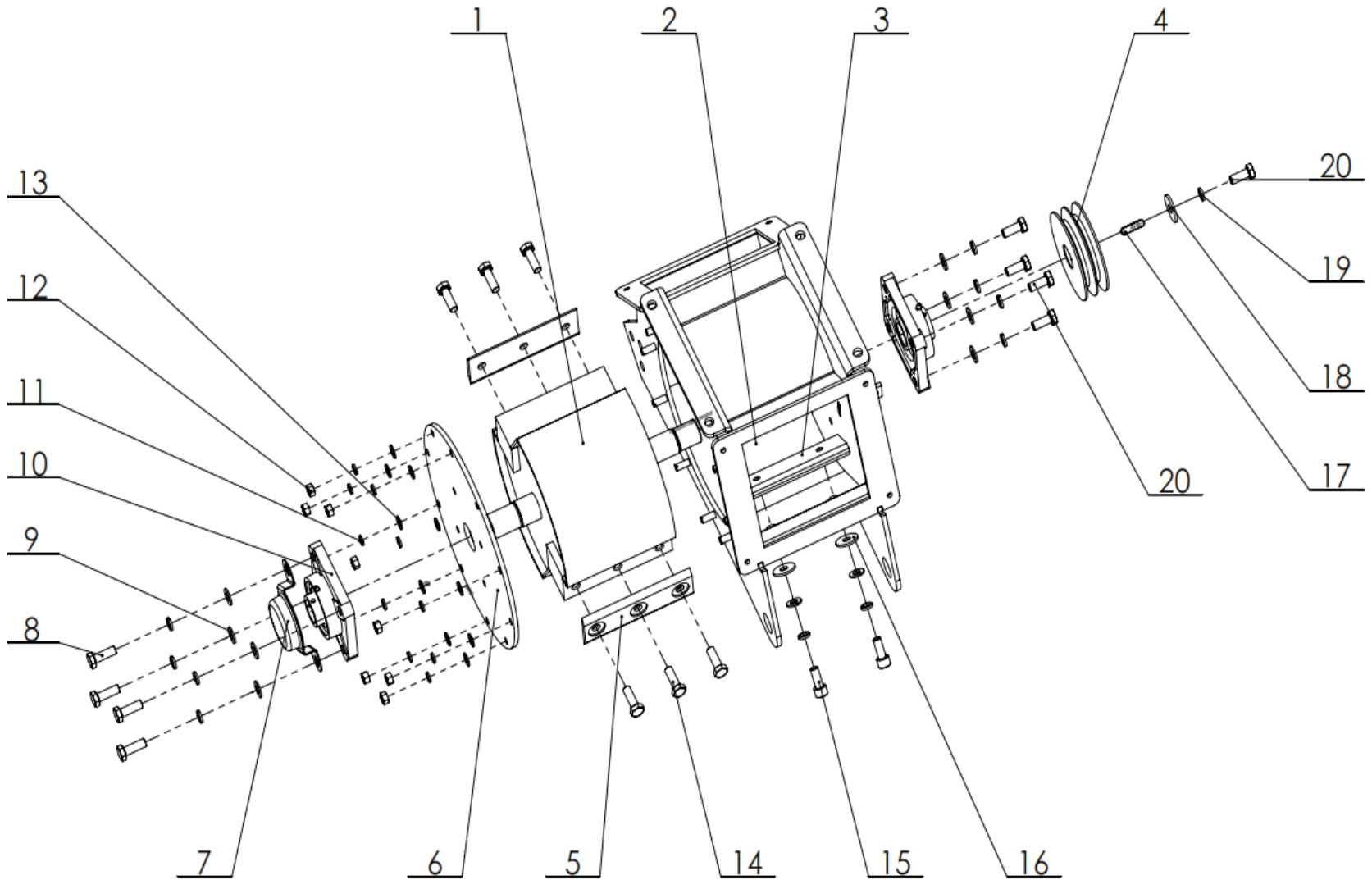
Engine filling engine oil, 170 engine oil capacity of 0.6L, 177 and 192 engine oil capacity of 1.1L, when the engine oil level is below the normal state, using the engine, will seriously damage the engine. Gasoline engine oil is recommended to use SAE10W-30 lubricating oil, it is suitable for the general ambient temperature, when your area average temperature in the range shown in the chart can use other viscosity of lubricating oil.

WHOLE MACHINE PARTS - A



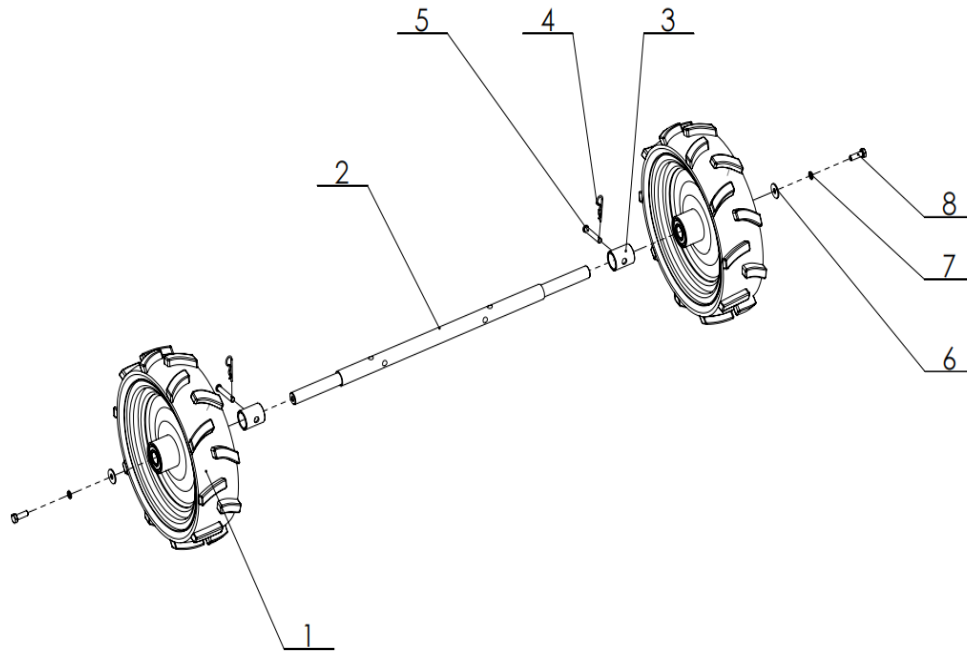
| SL NO | PART NO | DESCRIPTION | SL NO | PART NO | DESCRIPTION |
|-------|------------------|--|-------|------------------|---|
| 1 | AM-WCS-170FP-A01 | NA | 13 | AM-WCS-170FP-A13 | Pan head screws with cruciform slots |
| 2 | AM-WCS-170FP-A02 | Belt guard | 14 | AM-WCS-170FP-A14 | Hexagon head bolt full thread |
| 3 | AM-WCS-170FP-A03 | NA | 15 | AM-WCS-170FP-A15 | Standard elastic washer |
| 4 | AM-WCS-170FP-A04 | V-belt for agricultural machinery | 16 | AM-WCS-170FP-A16 | Large gasket Class A |
| 5 | AM-WCS-170FP-A05 | NA | 17 | AM-WCS-170FP-A17 | Hexagon head bolt, elastic washer, flat washer assembly |
| 6 | AM-WCS-170FP-A06 | NA | 18 | AM-WCS-170FP-A18 | Flat washer Class A |
| 7 | AM-WCS-170FP-A07 | NA | 19 | AM-WCS-170FP-A19 | Standard elastic washer |
| 8 | AM-WCS-170FP-A08 | Supporting leg | 20 | AM-WCS-170FP-A20 | Type 1 hexagon nuts Class A and Class B |
| 9 | AM-WCS-170FP-A09 | cushion | | | |
| 10 | AM-WCS-170FP-A10 | Hexagon head bolt full thread | | | |
| 11 | AM-WCS-170FP-A11 | Hexagon head bolt full thread | | | |
| 12 | AM-WCS-170FP-A12 | Type 2 non-metal insert hexagon flange locking nut | | | |

Crushing chamber and its components - B



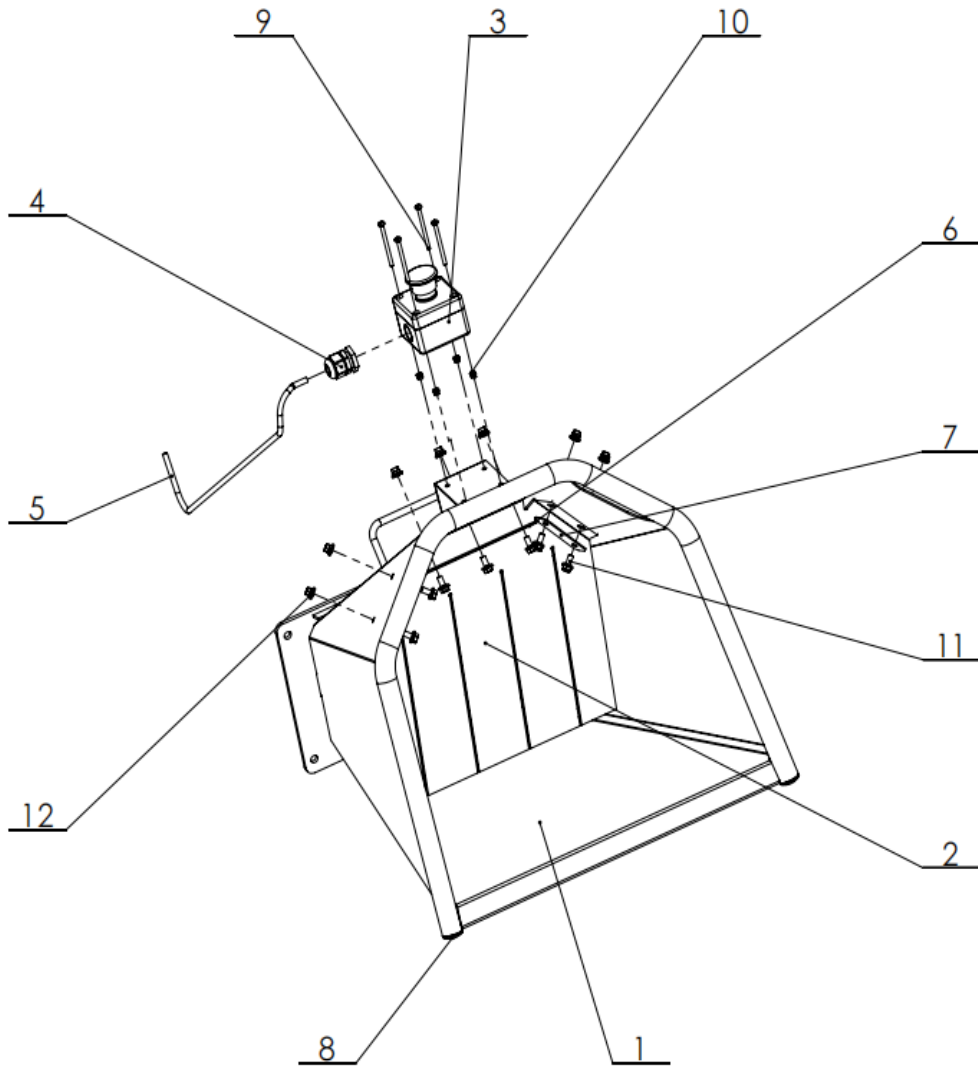
| SL NO | PART NO | DESCRIPTION | SL NO | PART NO | DESCRIPTION |
|-------|------------------|--|-------|------------------|-------------------------------|
| 1 | AM-WCS-170FP-B01 | Tool barrel | 13 | AM-WCS-170FP-B13 | Flat washer Class A |
| 2 | AM-WCS-170FP-B02 | Grinding chamber | 14 | AM-WCS-170FP-B14 | Hexagon head bolt full thread |
| 3 | AM-WCS-170FP-B03 | Fixed blade | 15 | AM-WCS-170FP-B15 | Hexagon head bolt |
| 4 | AM-WCS-170FP-B04 | Driven pulley | 16 | AM-WCS-170FP-B16 | Large gasket Class A |
| 5 | AM-WCS-170FP-B05 | Cutter blade | 17 | AM-WCS-170FP-B17 | Plain flat key Type A key |
| 6 | AM-WCS-170FP-B06 | Cover plate | 18 | AM-WCS-170FP-B18 | Extra large gasket Class C |
| 7 | AM-WCS-170FP-B07 | Bearing cap | 19 | AM-WCS-170FP-B19 | Standard elastic washer |
| 8 | AM-WCS-170FP-B08 | "Hexagon head bolt full thread " | 20 | AM-WCS-170FP-B20 | Hexagon head bolt full thread |
| 9 | AM-WCS-170FP-B09 | Flat washer Class A | | | |
| 10 | AM-WCS-170FP-B10 | Bearing with square seat | | | |
| 11 | AM-WCS-170FP-B11 | Standard elastic washer | | | |
| 12 | AM-WCS-170FP-B12 | Type 1 hexagon nuts Class A and B | | | |

wheel assembly - C



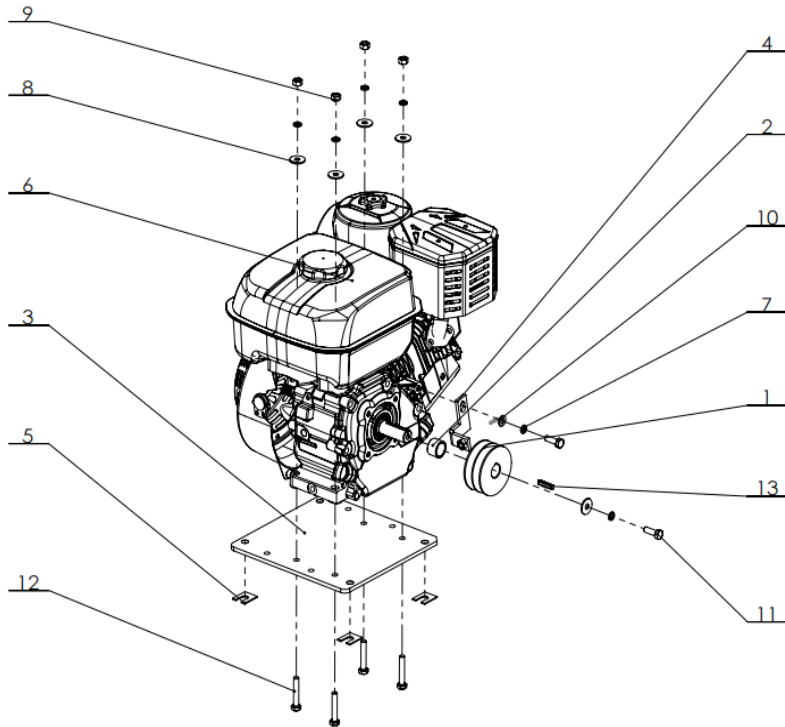
| SL NO | PART NO | DESCRIPTION |
|-------|------------------|-------------------------------|
| 1 | AM-WCS-170FP-C01 | Wheel assembly |
| 2 | AM-WCS-170FP-C02 | axletree |
| 3 | AM-WCS-170FP-C03 | retainer |
| 4 | AM-WCS-170FP-C04 | Circlip B |
| 5 | AM-WCS-170FP-C05 | Pin shaft |
| 6 | AM-WCS-170FP-C06 | Large gasket Class A |
| 7 | AM-WCS-170FP-C07 | Standard elastic washer |
| 8 | AM-WCS-170FP-C08 | Hexagon head bolt full thread |

Feed Hopper Assembly - D



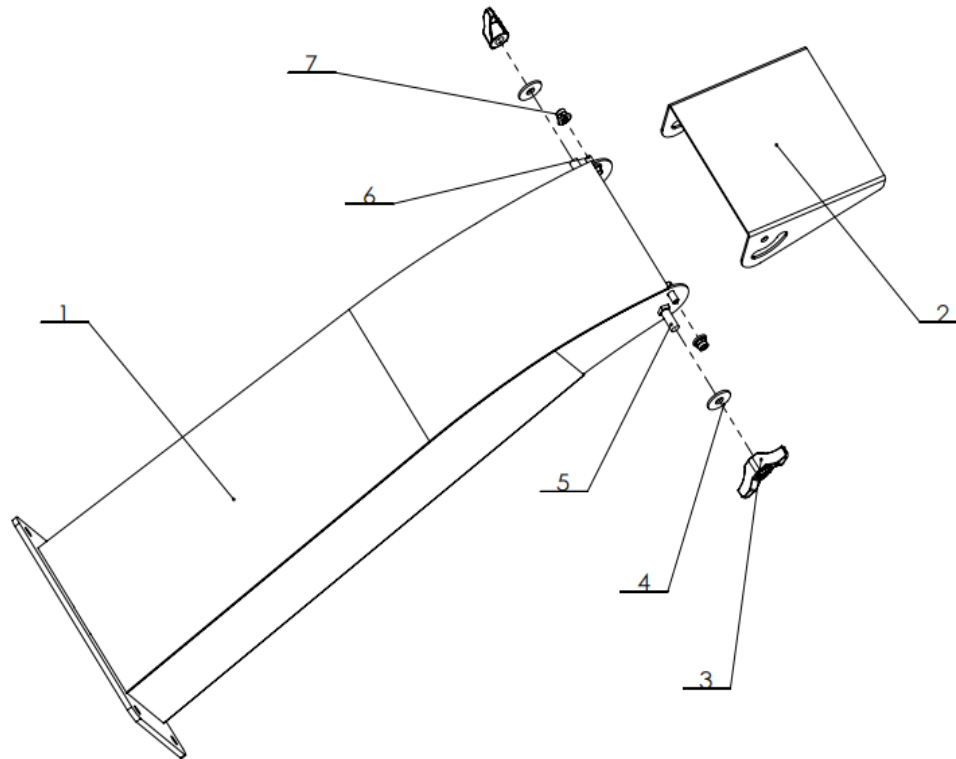
| SL NO | PART NO | DESCRIPTION |
|-------|------------------|------------------------------------|
| 1 | AM-WCS-170FP-D01 | Feed hopper |
| 2 | AM-WCS-170FP-D02 | Mud blocking rubber |
| 3 | AM-WCS-170FP-D03 | Scram switch |
| 4 | AM-WCS-170FP-D04 | Waterproof connector PG |
| 5 | AM-WCS-170FP-D05 | Harness assembly |
| 6 | AM-WCS-170FP-D06 | Fender batten (long) |
| 7 | AM-WCS-170FP-D07 | Fender batten (short) |
| 8 | AM-WCS-170FP-D08 | Handrail plug |
| 9 | AM-WCS-170FP-D09 | Pan head screw with cross slot |
| 10 | AM-WCS-170FP-D10 | " hexagon lock Nut" |
| 11 | AM-WCS-170FP-D11 | Hexagon head bolt with full thread |
| 12 | AM-WCS-170FP-D12 | " Hex flange Face lock nut " |

Engine and its components - E



| SL NO | PART NO | DESCRIPTION |
|-------|------------------|---|
| 1 | AM-WCS-170FP-E01 | Driving pulley |
| 2 | AM-WCS-170FP-E02 | Bushing |
| 3 | AM-WCS-170FP-E03 | Bottom plate |
| 4 | AM-WCS-170FP-E04 | Link block |
| 5 | AM-WCS-170FP-E05 | Adjusting gasket |
| 6 | AM-WCS-170FP-E06 | 170F/P-2 agricultural machinery power |
| 7 | AM-WCS-170FP-E07 | Standard elastic washer |
| 8 | AM-WCS-170FP-E08 | Large gasket Class A |
| 9 | AM-WCS-170FP-E09 | "Type 1 hexagon nuts Class A and B " |
| 10 | AM-WCS-170FP-E10 | Flat washer Class A |
| 11 | AM-WCS-170FP-E11 | "Hexagon head bolt full thread " |
| 12 | AM-WCS-170FP-E12 | "Hexagon head bolt full thread " |
| 13 | AM-WCS-170FP-E13 | Plain flat key Type A |






Discharge hopper assembly -F



| SL NO | PART NO | DESCRIPTION | SL NO | PART NO | DESCRIPTION |
|-------|------------------|------------------------------|-------|------------------|-----------------------------|
| 1 | AM-WCS-170FP-F01 | Discharge hopper | 5 | AM-WCS-170FP-F05 | "Bolt Class B " |
| 2 | AM-WCS-170FP-F02 | Discharge gate baffle | 6 | AM-WCS-170FP-F06 | Hexagon head bolt |
| 3 | AM-WCS-170FP-F03 | The armrest locks the handle | 7 | AM-WCS-170FP-F07 | " flange Face lock nut " |
| 4 | AM-WCS-170FP-F04 | Large gasket Class A | | | |






WARRANTY CARD

CUSTOMER COPY

| | | | |
|---|---|---|--------------------|
| DATE _____ | DATE OF DELIVERY _____ | DEALERS OFFICIAL SEAL | DEALERS SIGN _____ |
| PURCHASERS NAME & ADDRESS _____ _____ |  CUSTOMER SIGN |  | |
| PRODUCT NAME | PRODUCT SERIAL NO. | INVOICE/DN NO. | |
|  |  |  | |






I/Will accept the terms and conditions of warranty as in the warranty card

DEALERS COPY

| | | | |
|---|---|---|--------------------|
| DATE _____ | DATE OF DELIVERY _____ | DEALERS OFFICIAL SEAL | DEALERS SIGN _____ |
| PURCHASERS NAME & ADDRESS _____ _____ |  CUSTOMER SIGN |  | |
| PRODUCT NAME | PRODUCT SERIAL NO. | INVOICE/DN NO. | |
|  |  |  | |

I/Will accept the terms and conditions of warranty as in the warranty card

COMPANY COPY

| | | | |
|---|---|---|--------------------|
| DATE _____ | DATE OF DELIVERY _____ | DEALERS OFFICIAL SEAL | DEALERS SIGN _____ |
| PURCHASERS NAME & ADDRESS _____ _____ |  CUSTOMER SIGN |  | |
| PRODUCT NAME | PRODUCT SERIAL NO. | INVOICE/DN NO. | |
|  |  |  | |

I/Will accept the terms and conditions of warranty as in the warranty card

1. LIMITED WARRANTY PERIOD : For a period of six months from the date of Sale / delivery of the product which ever is earlier. 2. LIMITED WARRANTY OBLIGATION : Replacement of defective part(s) by authorized dealer are free of charges. If found defective by reasons of defective material / poor workmanship, parts will be replaced and there will be no value re-imburement. 3. TERMS & CONDITIONS : a. Claims under warranty will be accepted on submission of Warranty Card duly filled and stamped by authorized dealer together with the original purchase document. : b. Shipping / transportation / Incidental charges incurred in replacing defective parts under warranty shall be borne by the purchaser

WARRANTY null & void if

- (i) Lack of maintenance, (ii) Incorrect use of the machine or tampering, (iii) Use of non-genuine spare parts, (iv) Usage of acids, solvents, or any flammable materials, (v) Non-usage of filter water / clear water / soft water & using water above 40°C temperature, (vi) While using the pressure washers to draw water which is contaminated with dust & solvents (eg. paint thinners, gasoline, oil, etc.), (vii) Repair done by unauthorized service people, (viii) Those parts subject to wear & tear due to normal operations and plastic parts, rubber items etc, (ix) Loose connections, faulty electrical fixtures & fluctuations in power supply.
- 4. Should any failure occur during or after the warranty period, customer does not have the right to interrupt payment / price discount.
- 5. Incidental or consequential damages like inconvenience commercial loss, loss of tie, mental agony etc.
- 6. Loss of any nature due to operation or non-operation is not covered under warranty.
- 7. All free service are at Dealer's service point only.
- 8. Warranty ceases if service is not done periodically.
- 9. The attached card should be completed and returned to Ratnagiri Impex Pvt. Ltd. for registration immediately after sale / delivery.
- 10. The warranty is void unless you register the warranty card with Ratnagiri Impex Pvt. Ltd.
- 11. The decision of Ratnagiri Impex Pvt. Ltd., in settling the warranty is final in all respects.
- 12. All disputes are subject to Bangalore Courts Jurisdiction

1. LIMITED WARRANTY PERIOD : For a period of six months from the date of Sale / delivery of the product which ever is earlier. 2. LIMITED WARRANTY OBLIGATION : Replacement of defective part(s) by authorized dealer are free of charges. If found defective by reasons of defective material / poor workmanship, parts will be replaced and there will be no value re-imburement. 3. TERMS & CONDITIONS : a. Claims under warranty will be accepted on submission of Warranty Card duly filled and stamped by authorized dealer together with the original purchase document. : b. Shipping / transportation / Incidental charges incurred in replacing defective parts under warranty shall be borne by the purchaser.

WARRANTY null & void if

- (i) Lack of maintenance, (ii) Incorrect use of the machine or tampering, (iii) Use of non-genuine spare parts, (iv) Usage of acids, solvents, or any flammable materials, (v) Non-usage of filter water / clear water / soft water & using water above 40°C temperature, (vi) While using the pressure washers to draw water which is contaminated with dust & solvents (eg. paint thinners, gasoline, oil, etc.), (vii) Repair done by unauthorized service people, (viii) Those parts subject to wear & tear due to normal operations and plastic parts, rubber items etc, (ix) Loose connections, faulty electrical fixtures & fluctuations in power supply.
- 4. Should any failure occur during or after the warranty period, customer does not have the right to interrupt payment / price discount.
- 5. Incidental or consequential damages like inconvenience commercial loss, loss of tie, mental agony etc.
- 6. Loss of any nature due to operation or non-operation is not covered under warranty.
- 7. All free service are at Dealer's service point only.
- 8. Warranty ceases if service is not done periodically.
- 9. The attached card should be completed and returned to Ratnagiri Impex Pvt. Ltd. for registration immediately after sale / delivery.
- 10. The warranty is void unless you register the warranty card with Ratnagiri Impex Pvt. Ltd.
- 11. The decision of Ratnagiri Impex Pvt. Ltd., in settling the warranty is final in all respects.
- 12. All disputes are subject to Bangalore Courts Jurisdiction

1. LIMITED WARRANTY PERIOD : For a period of six months from the date of Sale / delivery of the product which ever is earlier. 2. LIMITED WARRANTY OBLIGATION : Replacement of defective part(s) by authorized dealer are free of charges. If found defective by reasons of defective material / poor workmanship, parts will be replaced and there will be no value re-imburement. 3. TERMS & CONDITIONS : a. Claims under warranty will be accepted on submission of Warranty Card duly filled and stamped by authorized dealer together with the original purchase document. : b. Shipping / transportation / Incidental charges incurred in replacing defective parts under warranty shall be borne by the purchaser.

WARRANTY null & void if

- (i) Lack of maintenance, (ii) Incorrect use of the machine or tampering, (iii) Use of non-genuine spare parts, (iv) Usage of acids, solvents, or any flammable materials, (v) Non-usage of filter water / clear water / soft water & using water above 40°C temperature, (vi) While using the pressure washers to draw water which is contaminated with dust & solvents (eg. paint thinners, gasoline, oil, etc.), (vii) Repair done by unauthorized service people, (viii) Those parts subject to wear & tear due to normal operations and plastic parts, rubber items etc, (ix) Loose connections, faulty electrical fixtures & fluctuations in power supply.
- 4. Should any failure occur during or after the warranty period, customer does not have the right to interrupt payment / price discount.
- 5. Incidental or consequential damages like inconvenience commercial loss, loss of tie, mental agony etc.
- 6. Loss of any nature due to operation or non-operation is not covered under warranty.
- 7. All free service are at Dealer's service point only.
- 8. Warranty ceases if service is not done periodically.
- 9. The attached card should be completed and returned to Ratnagiri Impex Pvt. Ltd. for registration immediately after sale / delivery.
- 10. The warranty is void unless you register the warranty card with Ratnagiri Impex Pvt. Ltd.
- 11. The decision of Ratnagiri Impex Pvt. Ltd., in settling the warranty is final in all respects.
- 12. All disputes are subject to Bangalore Courts Jurisdiction



FREE SERVICE COUPON (30DAYS/30HRS. WHICHEVER IS EARLIER)

MODEL

SERIAL NUMBER

PDI DATE

SERVICE NO.

PURCHASE BILL NO.

DATE

DEALERS OFFICE SEAL

- 1. Check and test the fuel mixture
- 3. Check , clean and adjust the spark plug
- 5. Check and sparken the cutting tools
- 7. Start and check the noise, vibration, loosen etc..

OPERATIONS

- 2. check and clean the air filter
- 4. Check and adjust the carburetor tuning
- 6. Product familirisation on usage
- 8. Routine maintenance and shortage.

FREE SERVICE COUPON (30DAYS/30HRS. WHICHEVER IS EARLIER)

MODEL

SERIAL NUMBER

PDI DATE

SERVICE NO.

PURCHASE BILL NO.

DATE

DEALERS OFFICE SEAL

- 1. Check and test the fuel mixture
- 3. Check , clean and adjust the spark plug
- 5. Check and sparken the cutting tools
- 7. Start and check the noise, vibration, loosen etc..

OPERATIONS

- 2. check and clean the air filter
- 4. Check and adjust the carburetor tuning
- 6. Product familirisation on usage
- 8. Routine maintenance and shortage.

FREE SERVICE COUPON (30DAYS/30HRS. WHICHEVER IS EARLIER)

MODEL

SERIAL NUMBER

PDI DATE

SERVICE NO.

PURCHASE BILL NO.

DATE

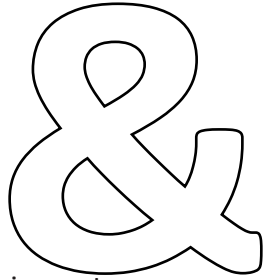
DEALERS OFFICE SEAL

- 1. Check and test the fuel mixture
- 3. Check , clean and adjust the spark plug
- 5. Check and sparken the cutting tools
- 7. Start and check the noise, vibration, loosen etc..

OPERATIONS

- 2. check and clean the air filter
- 4. Check and adjust the carburetor tuning
- 6. Product familirisation on usage
- 8. Routine maintenance and shortage.

DOS



DONTs

attempting to use the equipments.

1. Always read the instruction manual supplied along with the equipments and understand the correct installation and operating procedures before

trousers and jackets while operating potentially dangerous machines
2. It is important to use the personal protection equipments such as head helmet with visor, ear defenders, goggles, safety gloves, cut resistant shoes,
3. Avoid untrained persons using the equipments. Children must not be allowed to handle these equipments
4. Always use genuine spares and accessories in repairs and usage to derive maximum life of the equipments.
5. Always keep the equipments in good working condition to minimize loss of output as well as to reduce the pollution and save the environment
6. Do not use the machine within range of persons unless they wear protective clothing
7. Do not operate the machine when fatigued or under the influence of alcohol or drugs
8. For more query kindly contact for our Service Center/Dealer/ franchise

NO. 1 CHOICE OF FARMERS SINCE 1999



Marketed by.
**ratnagiri
impex**
BRINGING YOU THE FUTURE... NOW

RATNAGIRI IMPEX PVT., LTD.,

Annapurna House, #1 / 1G, 7th Cross, New
Guddadahalli

Mysore Road, Bangalore - 560 026

Missed Call : 7393 938 938

Email: ask@agrimart.in