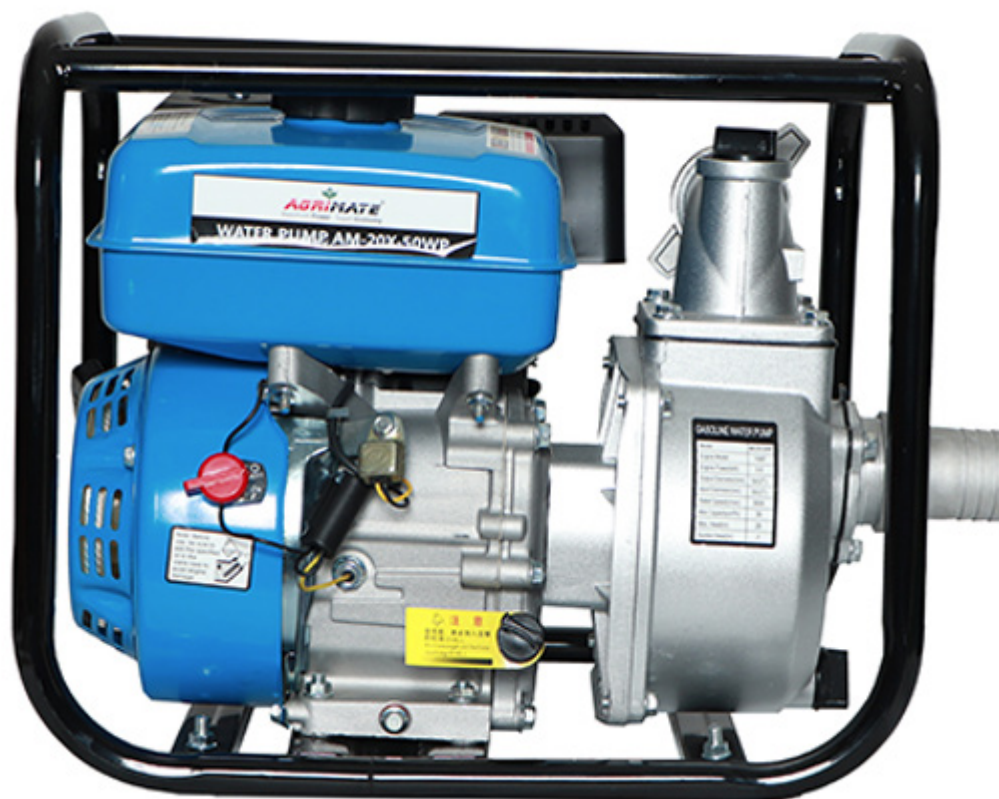


AGRIMATE WATER PUMP -GASOLINE

AM-WPS-20P-NT



AM-WPS-30P-NT



DISCLAIMER : DUE TO CONTANT UPGRADATION FEATURES & SPECIFICATIONS ARE SELECT TO CHANGE WITHOUT NOTICE
BEFORE OPERATING THIS MACHINE PLEASE READ THIS INSTRUCTIONS MANUAL CAREFULLY

INTRODUCTION

Thank you for choosing the Agrimate Product , You are the proud owner of high technology & durable machine. trust that our Franchisee/Dealer installed the product and explained you about the usage & service instructions. Please visit our authorised dealer for your future requirement of our other equipments., genuine spares, accessories & service. Service coupons are attached with this manual & you can avail free service.

About Ratnagiri

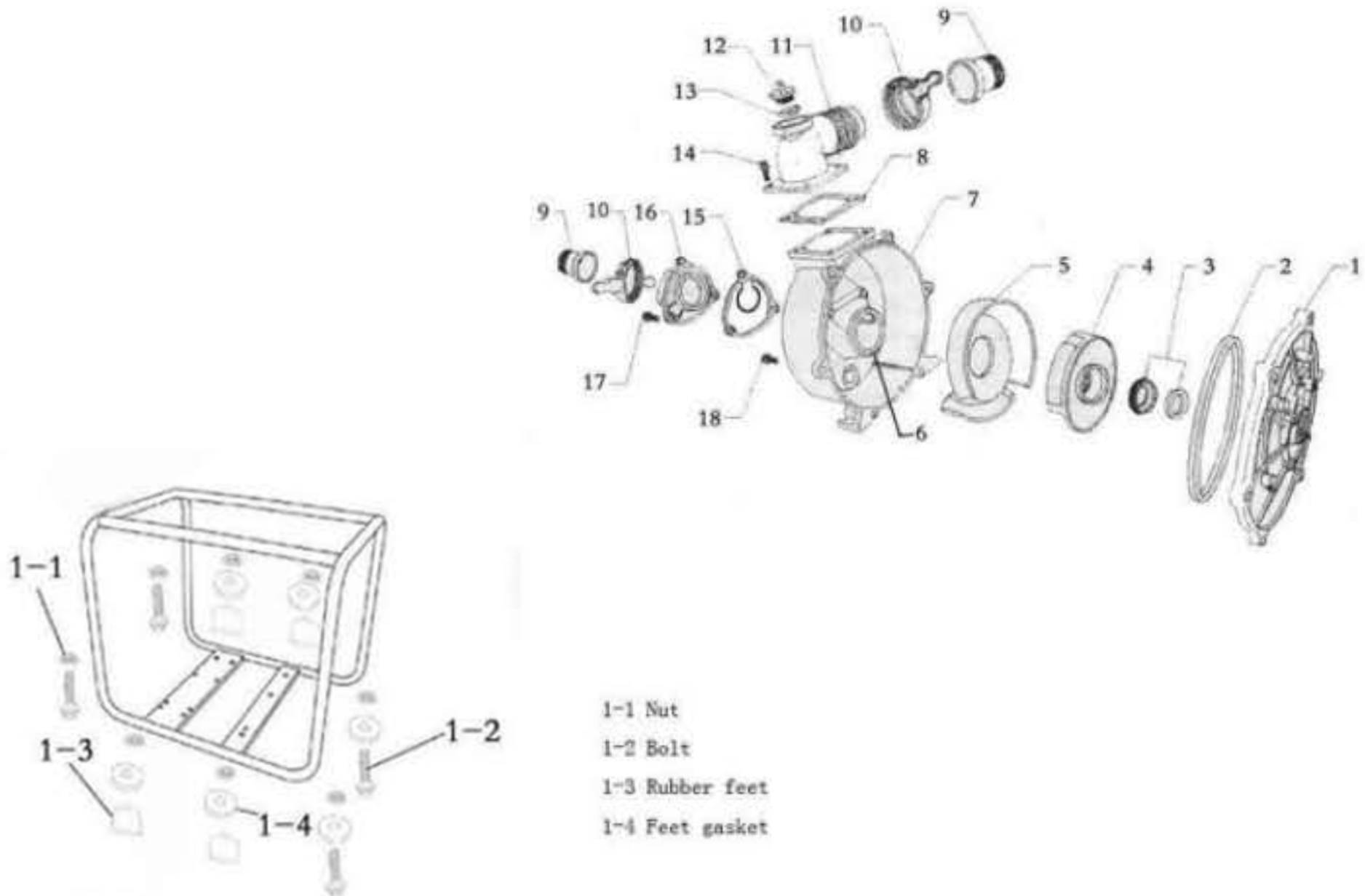
We Import & market of high quality of agriculture wide range of equipments which we are selling through our authorised franchisee or dealer network. we are in this feild from past 20years serving the former community. For further details you may visit our website : www.agrimart.in.

TECHNICAL SPECIFICATIONS

Model	AM-WPS-20P-NT	AM-WPS-20P-NT
Engine	AM-170-4S	AM-170-4S
Power	212cc/3600RPM	212cc/3600RPM
Pump - Suction/Delivery	2" x 2" - Self priming	3" x 3" - Self priming
Max. Discharge	36(m3/H)/9500GPH	70(m3/H)/15850GPH
Max. Delivery Head	26 mtr	26 mtr
Max. Suction Head	7 mtr	7 mtr

SPARE PART LIST OF AM-WPS-20P-NT & AM-WPS-30P-NT WATER PUMP - GASOLINE

PUMP DIAGRAM



SPARE PART LIST OF AM-WPS-20P-NT WATER PUMP

SL NO.	PART NO	DESCRIPTION	SL NO.	PART NO	DESCRIPTION
1	AM-WP2-P01	PUMP COVER	17	AM-WP2-P17	BOLT
2	AM-WP2-P02	COVER GASKET	18	AM-WP2-P18	BOLT
3	AM-WP2-P03	MECHANICAL GASKET			
4	AM-WP2-P04	IMPELLER			
5	AM-WP2-P05	VOLUTE CASING			
6	AM-WP2-P06	VOLUTE CASING GASKET			
7	AM-WP2-P07	PUMP HOUSING			
8	AM-WP2-P08	DISCHARGE FLAGE GASKET			
9	AM-WP2-P09	PIP CONNECTOR			
10	AM-WP2-P10	NUT CONNETCOR			
11	AM-WP2-P11	DISCHRG FLANGE			
12	AM-WP2-P12	PRIMING PLUG			
13	AM-WP2-P13	O RING - PLUG			
14	AM-WP2-P14	BOLT			
15	AM-WP2-P15	INLET VALVE GASKET			
16	AM-WP2-P16	INLET FLANGE			

SPARE PART LIST OF AM-WPS-30P-NT WATER PUMP

SL NO.	PART NO	DESCRIPTION	SL NO.	PART NO	DESCRIPTION
1	AM-WP3-P01	PUMP COVER	17	AM-WP3-P17	BOLT
2	AM-WP3-P02	COVER GASKET	18	AM-WP3-P18	BOLT
3	AM-WP3-P03	MECHANICAL GASKET			
4	AM-WP3-P04	IMPELLER			
5	AM-WP3-P05	VOLUTE CASING			
6	AM-WP3-P06	VOLUTE CASING GASKET			
7	AM-WP3-P07	PUMP HOUSING			
8	AM-WP3-P08	DISCHARGE FLAGE GASKET			
9	AM-WP3-P09	PIP CONNECTOR			
10	AM-WP3-P10	NUT CONNETCOR			
11	AM-WP3-P11	DISCHRG FLANGE			
12	AM-WP3-P12	PRIMING PLUG			
13	AM-WP3-P13	O RING - PLUG			
14	AM-WP3-P14	BOLT			
15	AM-WP3-P15	INLET VALVE GASKET			
16	AM-WP3-P16	INLET FLANGE			

INSPECTION & MAINTAINANCE

For safety use, make sure the machine is cleaned every three months. Before working, make sure to inspect the filter and the nozzle and ensure there is no impurity. After working, make sure there is no water in the pump and the hose.

If the machine needs to be repaired in the guarantee period, please return the machine to the shop. You need to provide the certificate of purchase on order to repair or get the substitute.

Before packing, the machine should be cleaned, then use closed packaging, packaging should be firm. Store the machine in dry place.

For transportation safety. The machine should comply with ISTA.

Do not dispose of electrical machines as unsorted municipal waste, use separate collection facilities.

If electrical machines are disposed of in landfills or dumps, hazardous substances can leak into the ground water and get into the food chain, damaging your health and well being.

When replacing old machines with new ones, the retailer is legally obligated to take back your old machine for disposals at least free of charge.

WARRANTY CARD

CUSTOMER COPY

DATE _____	DATE OF DELIVERY _____	DEALERS OFFICIAL SEAL _____	DEALERS SIGN _____
PURCHASERS NAME & ADDRESS _____ _____ _____	<div>CUSTOMER SIGN</div>	<div></div>	
PRODUCT NAME	PRODUCT SERIAL NO.	INVOICE/DN NO.	
<div></div>	<div></div>	<div></div>	
I/Will accept the terms and conditions of warranty as in the warranty card			

DEALERS COPY

DATE _____	DATE OF DELIVERY _____	DEALERS OFFICIAL SEAL _____	DEALERS SIGN _____
PURCHASERS NAME & ADDRESS _____ _____ _____	<div>CUSTOMER SIGN</div>	<div></div>	
PRODUCT NAME	PRODUCT SERIAL NO.	INVOICE/DN NO.	
<div></div>	<div></div>	<div></div>	
I/Will accept the terms and conditions of warranty as in the warranty card			

COMPANY COPY

DATE _____	DATE OF DELIVERY _____	DEALERS OFFICIAL SEAL _____	DEALERS SIGN _____
PURCHASERS NAME & ADDRESS _____ _____ _____	<div>CUSTOMER SIGN</div>	<div></div>	
PRODUCT NAME	PRODUCT SERIAL NO.	INVOICE/DN NO.	
<div></div>	<div></div>	<div></div>	
I/Will accept the terms and conditions of warranty as in the warranty card			

1. LIMITED WARRANTY PERIOD : For a period of six months from the date of Sale / delivery of the product which ever is earlier. 2. LIMITED WARRANTY OBLIGATION : Replacement of defective part(s) by authorized dealer are free of charges. If found defective by reasons of defective material / poor workmanship, parts will be replaced and there will be no value re-imbursement. 3. TERMS & CONDITIONS : a. Claims under warranty will be accepted on submission of Warranty Card duly filled and stamped by authorized dealer together with the original purchase document. : b. Shipping / transportation / Incidental charges incurred in replacing defective parts under warranty shall be borne by the purchaser

WARRANTY null & void if
(i) Lack of maintenance, (ii) Incorrect use of the machine or tampering, (iii) Use of non-genuine spare parts, (iv) Usage of acids, solvents, or any flammable materials, (v) Non-usage of filter water / clear water / soft water & using water above 40°C temperature, (vi) While using the pressure washers to draw water which is contaminated with dust & solvents (eg. paint thinners, gasoline, oil, etc.), (vii) Repair done by unauthorized service people, (viii) Those parts subject to wear & tear due to normal operations and plastic parts, rubber items etc, (ix) Loose connections, faulty electrical fixtures & fluctuations in power supply.
4. Should any failure occur during or after the warranty period, customer does not have the right to interrupt payment / price discount.
5. Incidental or consequential damages like inconvenience commercial loss, loss of tie, mental agony etc.
6. Loss of any nature due to operation or non-operation is not covered under warranty.
7. All free service are at Dealer's service point only.
8. Warranty ceases if service is not done periodically.
9. The attached card should be completed and returned to Ratnagiri Impex Pvt. Ltd. for registration immediately after sale / delivery.
10. The warranty is void unless you register the warranty card with Ratnagiri Impex Pvt. Ltd.
11. The decision of Ratnagiri Impex Pvt. Ltd., in settling the warranty is final in all respects.
12. All disputes are subject to Bangalore Courts Jurisdiction

1. LIMITED WARRANTY PERIOD : For a period of six months from the date of Sale / delivery of the product which ever is earlier. 2. LIMITED WARRANTY OBLIGATION : Replacement of defective part(s) by authorized dealer are free of charges. If found defective by reasons of defective material / poor workmanship, parts will be replaced and there will be no value re-imbursement. 3. TERMS & CONDITIONS : a. Claims under warranty will be accepted on submission of Warranty Card duly filled and stamped by authorized dealer together with the original purchase document. : b. Shipping / transportation / Incidental charges incurred in replacing defective parts under warranty shall be borne by the purchaser.
WARRANTY null & void if
(i) Lack of maintenance, (ii) Incorrect use of the machine or tampering, (iii) Use of non-genuine spare parts, (iv) Usage of acids, solvents, or any flammable materials, (v) Non-usage of filter water / clear water / soft water & using water above 40°C temperature, (vi) While using the pressure washers to draw water which is contaminated with dust & solvents (eg. paint thinners, gasoline, oil, etc.), (vii) Repair done by unauthorized service people, (viii) Those parts subject to wear & tear due to normal operations and plastic parts, rubber items etc, (ix) Loose connections, faulty electrical fixtures & fluctuations in power supply.
4. Should any failure occur during or after the warranty period, customer does not have the right to interrupt payment / price discount.
5. Incidental or consequential damages like inconvenience commercial loss, loss of tie, mental agony etc.
6. Loss of any nature due to operation or non-operation is not covered under warranty.
7. All free service are at Dealer's service point only.
8. Warranty ceases if service is not done periodically.
9. The attached card should be completed and returned to Ratnagiri Impex Pvt. Ltd. for registration immediately after sale / delivery.
10. The warranty is void unless you register the warranty card with Ratnagiri Impex Pvt. Ltd.
11. The decision of Ratnagiri Impex Pvt. Ltd., in settling the warranty is final in all respects.
12. All disputes are subject to Bangalore Courts Jurisdiction

1. LIMITED WARRANTY PERIOD : For a period of six months from the date of Sale / delivery of the product which ever is earlier. 2. LIMITED WARRANTY OBLIGATION : Replacement of defective part(s) by authorized dealer are free of charges. If found defective by reasons of defective material / poor workmanship, parts will be replaced and there will be no value re-imbursement. 3. TERMS & CONDITIONS : a. Claims under warranty will be accepted on submission of Warranty Card duly filled and stamped by authorized dealer together with the original purchase document. : b. Shipping / transportation / Incidental charges incurred in replacing defective parts under warranty shall be borne by the purchaser.
WARRANTY null & void if
(i) Lack of maintenance, (ii) Incorrect use of the machine or tampering, (iii) Use of non-genuine spare parts, (iv) Usage of acids, solvents, or any flammable materials, (v) Non-usage of filter water / clear water / soft water & using water above 40°C temperature, (vi) While using the pressure washers to draw water which is contaminated with dust & solvents (eg. paint thinners, gasoline, oil, etc.), (vii) Repair done by unauthorized service people, (viii) Those parts subject to wear & tear due to normal operations and plastic parts, rubber items etc, (ix) Loose connections, faulty electrical fixtures & fluctuations in power supply.
4. Should any failure occur during or after the warranty period, customer does not have the right to interrupt payment / price discount.
5. Incidental or consequential damages like inconvenience commercial loss, loss of tie, mental agony etc.
6. Loss of any nature due to operation or non-operation is not covered under warranty.
7. All free service are at Dealer's service point only.
8. Warranty ceases if service is not done periodically.
9. The attached card should be completed and returned to Ratnagiri Impex Pvt. Ltd. for registration immediately after sale / delivery.
10. The warranty is void unless you register the warranty card with Ratnagiri Impex Pvt. Ltd.
11. The decision of Ratnagiri Impex Pvt. Ltd., in settling the warranty is final in all respects.
12. All disputes are subject to Bangalore Courts Jurisdiction

FREE SERVICE COUPON (30DAYS/30HRS. WHICHEVER IS EARLIER)

MODEL		SERIAL NUMBER	
PDI DATE	SERVICE NO.	PURCHASE BILL NO.	DATE
DEALERS OFFICE SEAL	OPERATIONS		
	<div> 1. Check and test the fuel mixture 3. Check , clean and adjust the spark plug 5. Check and sparken the cutting tools 7. Start and check the noise, vibration, loosen etc.. </div> <div> 2. check and clean the air filter 4. Check and adjust the carburetor tuning 6. Product familiarisation on usage 8. Routine maintenance and shortage. </div>		

FREE SERVICE COUPON (30DAYS/30HRS. WHICHEVER IS EARLIER)

MODEL		SERIAL NUMBER	
PDI DATE	SERVICE NO.	PURCHASE BILL NO.	DATE
DEALERS OFFICE SEAL	OPERATIONS		
	<div> 1. Check and test the fuel mixture 3. Check , clean and adjust the spark plug 5. Check and sparken the cutting tools 7. Start and check the noise, vibration, loosen etc.. </div> <div> 2. check and clean the air filter 4. Check and adjust the carburetor tuning 6. Product familiarisation on usage 8. Routine maintenance and shortage. </div>		

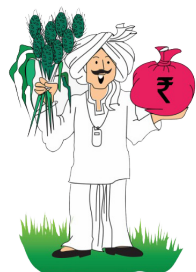
FREE SERVICE COUPON (30DAYS/30HRS. WHICHEVER IS EARLIER)

MODEL		SERIAL NUMBER	
PDI DATE	SERVICE NO.	PURCHASE BILL NO.	DATE
DEALERS OFFICE SEAL	OPERATIONS		
	<div> 1. Check and test the fuel mixture 3. Check , clean and adjust the spark plug 5. Check and sparken the cutting tools 7. Start and check the noise, vibration, loosen etc.. </div> <div> 2. check and clean the air filter 4. Check and adjust the carburetor tuning 6. Product familiarisation on usage 8. Routine maintenance and shortage. </div>		

DOS & DONTs

1. Always read the instruction manual supplied along with the equipments and understand the correct installation and operating procedures before attempting to use the equipments.
2. It is important to use the personal protection equipments such as head helmet with visor, ear defenders, goggles, safety gloves, cut resistant shoes, trousers and jackets while operating potentially dangerous machines
3. Avoid untrained persons using the equipments. Children must not be allowed to handle these equipments
4. Always use genuine spares and accessories in repairs and usage to derive maximum life of the equipments.
5. Always keep the equipments in good working condition to minimize loss of output as well as to reduce the pollution and save the environment
6. Do not use the machine within range of persons unless they wear protective clothing
7. Do not operate the machine when fatigued or under the influence of alcohol or drugs
8. When the machine is running, please maintain a constant water supply. Without water circulation will damage the sealing rings of the machine.
9. For more query kindly contact for our Service Center/Dealer/ franchise

AGRIMATE MULTI PURPOSE EQUIPMENT ANYWHERE - ANYTIME - ANY CROP



**ratnagiri
implex**

BRINGING YOU THE FUTURE... NOW

IMPORTED & MARKETING BY,
RATNAGIRI IMPEX PVT., LTD.,

**Annapurna House, #1 / 1G, 7th Cross, New
Guddadahalli Mysore Road, Bangalore - 560 026
Missed Call : 7393 938 938 Email: ask@agrimart.in**