

User Manual


AGRIMATE®
Maximum Power - Super Economy

AMH-P888-WITH GX-35-FF Portable Motorised Sprayer



DISCLAIMER: DUE TO CONSTANT UPGRADATION, FEATURES AND SPECIFICATIONS ARE SUBJECT TO CHANGE WITHOUT NOTICE



**BEFORE OPERATING THIS MACHINE,
PLEASE READ THESE INSTRUCTIONS CAREFULLY**

OPERATION PROCEDURE

1. Check the power source.
2. Fasten a high pressure outlet pipe.
3. Turn on the power of motor and switch on a sprayer immediately to release the residual air from inside the pump, make sure that the water fluid from an outlet is normal (if it is abnormal, then remove the high pressure outlet pipe so as to accelerate the air releasing from the pump).
4. Adjust the pressure by turning a pressure releasing valve clockwise to obtain a normal pressure.

The lubrication of the Pump:

1. Originally change the oil after the machine running about 30-50hours and subsequently, in an interval of about 70-100hours (made sure whether or not the oil is deteriorated)
2. Unfasten an outlet screw and release the discarded oil.
3. Fasten the outlet screw and unfasten an inlet cover then replenish 30#-40# clean oil. The right amount of the oil indicates at a two third portion in an oil glass
4. Always fill the grease cups with grease, screw on the grease cups 2-3cycles every 2 hours of spraying.
5. Be sure to clear the interior of pump by pouring clear water into the tank and restarting the motor immediately after finishing the application of chemical

The Precaution During Pump Application:

A. Regard to the Valve:

1. Disassemble the valve plug from the valve and clean it if they are stuck up
2. Clean the residues accumulated over the Valve Plug
3. Change the valve spring if it is broken or worn out

B. Regard to an Unloaded Valve

1. Change a new one if the pressure gate or the valve seat is found worn out
2. Clean the residues on the valve seat
3. Change new ones if the oil ring is worn out.

C. Regard to the Crank Case:

1. If the oil inside the crankcase is insufficient, the connecting rod, the crank and the bearings will be worn cut, then remove the back cover from the crankcase and change the components.
2. If the oil inside the crankcase is deteriorated. Make Sure the reason why it is deteriorated and then change the oil or the piston oil seal.
3. If the plunger can not operate, make sure that the bearing is broken in crankcase and change the bearing.

D. Regard To The Piston

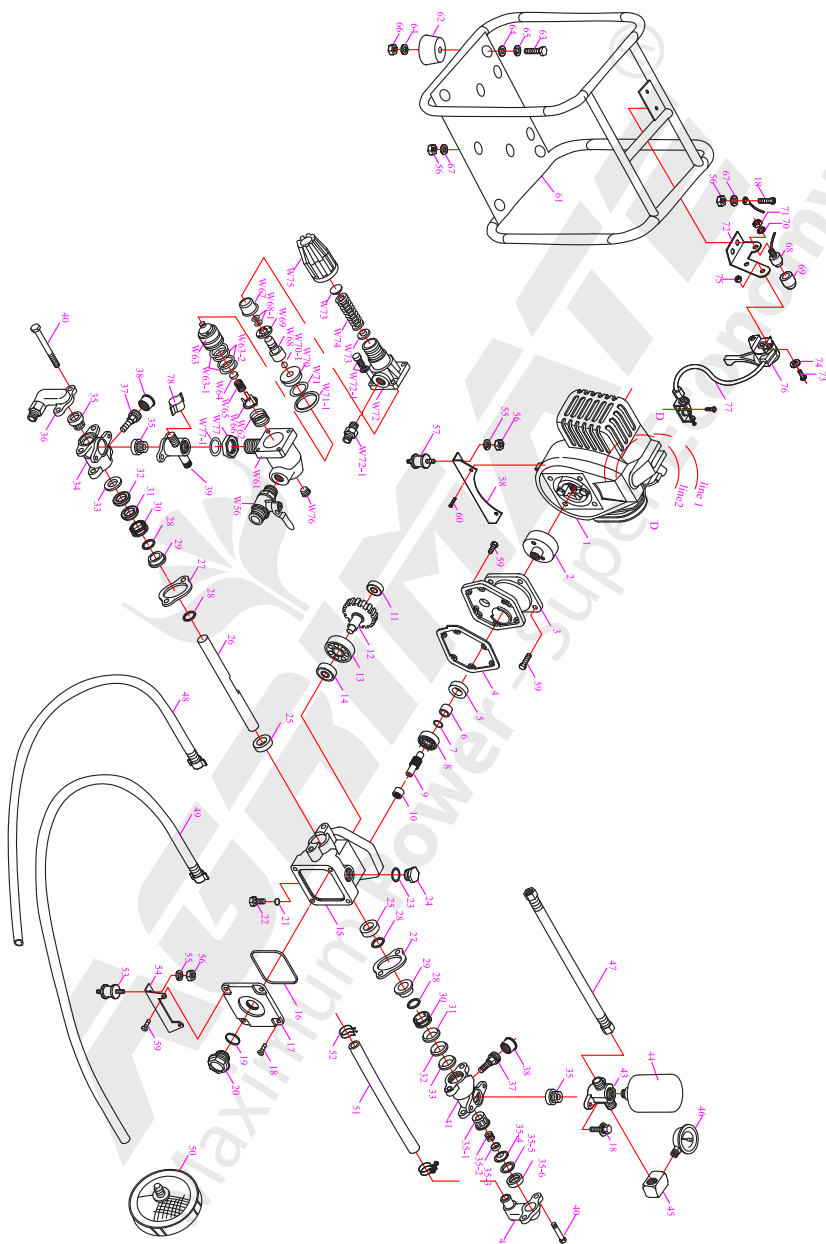
1. Change a new one if the V-packing is worn out
2. Change a new piston if it is worn out (a crack occurred along the axis of the piston is the one of the consequences causing a pressure decreasing or a water leakage)

E. Other

1. Change a new nozzle if it is broken causing a pressure decreasing.
2. Change a new high pressure pipe or a new connecting packing if they are found broken.

Model	AMH-P888/FF
Engine	HONDA GX35
Max. power output	1.2kw (1.6PS) / 7000rpm
Air consumption	35 cc
Oil capacity	100 cc
Fuel tank capacity	0.65 Liter
Pump	Horizontal gear driving type
Plunger	1 Piece (two-way operation)
Cylinder	2 Pieces
Dia. Of plunger	18mm
Stroke	9 mm
Spraying Volume	8 Liter / Min
Pressure	3.0 – 3.5 Mpa
L x W x L	31 x 34 x 33 cm
Weight	10.82 kgs

PUMP DIAGRAM OF PORTABLE MOTORISED SPRAYER AMH-P888 /FF



PUMP PART LISTS OF PORTABLE MOTORISED SPRAYER AMH-P888/FF

Part No.	Part name
AMH-P888-01	Engine
AMH-P888-02	Drum clutch
AMH-P888-03	Drum case
AMH-P888-04	Gasket
AMH-P888-05	Oil seal
AMH-P888-06	Steel pipe
AMH-P888-07	O-ring
AMH-P888-08	Bearing
AMH-P888-09	Shaft
AMH-P888-10	Bearing
AMH-P888-11	Bearing
AMH-P888-12	Gear shaft
AMH-P888-13	Bearing
AMH-P888-14	Bearing
AMH-P888-15	Crank case
AMH-P888-16	O-ring
AMH-P888-17	Crank case cover
AMH-P888-18	Screw
AMH-P888-19	O-ring
AMH-P888-20	Oil glass
AMH-P888-21	O-ring
AMH-P888-22	Drain plug
AMH-P888-23	O-ring
AMH-P888-24	Oil inlet cup
AMH-P888-25	Oil seal
AMH-P888-26	Plunger
AMH-P888-27	Fixed plate
AMH-P888-28	O-ring
AMH-P888-29	Adjusting ring
AMH-P888-30	V-packing upper seal
AMH-P888-31	V-packing
AMH-P888-32	V-packing (Viton)
AMH-P888-33	Packing seat
AMH-P888-34	Cylinder
AMH-P888-35	Valve Ass'y
AMH-P888-36	Suction chamber
AMH-P888-37	Grease cup seat
AMH-P888-38	Grease cup cover
AMH-P888-39	Outlet chamber
AMH-P888-40	Screw
AMH-P888-41	Cylinder
AMH-P888-42	Suction chamber
AMH-P888-43	Outlet chamber
AMH-P888-44	Air chamber
AMH-P888-45	Connector
AMH-P888-46	Pressure gauge
AMH-P888-47	High pressure hose
AMH-P888-48	Overflow hose
AMH-P888-49	Suction hose
AMH-P888-50	filter
AMH-P888-51	Suction hose
AMH-P888-52	Clip
AMH-P888-53	Joint
AMH-P888-54	Pump stand

Part No.	Part name
AMH-P888- 55	Spring washer
AMH-P888- 56	Nut
AMH-P888- 57	Joint
AMH-P888- 58	Engine stand
AMH-P888- 59	Screw
AMH-P888- 60	Tapping screw
AMH-P888- 61	Frame
AMH-P888- 62	Rubber stand
AMH-P888- 63	Screw
AMH-P888- 64	Washer
AMH-P888- 65	Spring washer
AMH-P888- 66	Nut
AMH-P888- 67	Washer
AMH-P888- 68	Stop switch (INCL.79 – 82)
AMH-P888- 69	Rubber sheath
AMH-P888- 70	Nut
AMH-P888- 71	Washer
AMH-P888- 72	Fixed plate
AMH-P888- 73	Screw
	Washer
AMH-P888- 74	
AMH-P888- 75	Nut
AMH-P888- 76	Throttle lever
AMH-P888- 77	Cable comp
AMH-P888- 78	Pipe cover
Auto pressure relief	
AMH-P888- W56	Ball cock
AMH-P888- W61	Unloading cylinder body
AMH-P888- W62	Spring
AMH-P888- W63	Piston valve body
AMH-P888- W63-1	O-ring
AMH-P888- W63-2	Backup ring
AMH-P888- W64	Valve seat
AMH-P888- W65	Ball valve spring
AMH-P888- W66	Ball valve case
AMH-P888- W67	Sleeve
AMH-P888- W68	Valve rod
AMH-P888- W68-1	O-ring
AMH-P888- W69	Damper plate
AMH-P888- W70	Valve sheath
AMH-P888- W70-1	Ball valve
AMH-P888- W71	O-ring
AMH-P888- W71-1	Square ring
AMH-P888- W72	Regulating spring case
AMH-P888- W72-1	Screw
AMH-P888- W73	Spring bottom seal
AMH-P888- W74	Regulating spring
AMH-P888- W75	Regulating nut
AMH-P888- W76	plug
AMH-P888- W77	Set nut
AMH-P888- W77-1	O-ring
AMH-P888- W78	Nut

For Engine Spare Parts Refer GX35 Engine Manual

INSPECTION & MAINTENANCE

For safety use, make sure the machine is cleaned every three-months. Before working, make sure to inspect the filter and the nozzle, and ensure there is no impurity. After working, make sure there is no water in the pump and the hose.

If the machine needs to be repaired in the guarantee period, please return the machine to the shop. You need to provide the certificate of purchase in order to repair or get the substitute.

Before Packing, the machine should be cleaned, then use closed packaging, packaging should be firm. Store the machine in dry place.

For transportation safety. The machine should comply with ISTA.



Meaning of crossed - out wheeled dustbin:

Do not dispose of electrical machines as unsorted municipal waste, use separate collection facilities.

If electrical machines are disposed of in landfills or dumps, hazardous substances can leak into the groundwater and get into the food chain, damaging your health and well-being.

When replacing old machines with new ones, the retailer is legally obligated to take back your old machine for disposals at least free of charge.

Warranty Card

CUSTOMER COPY



Purchaser's Name & Address

Product Name

AMH-P888- WITH GX-35-FF **Portable Motorised Sprayer**

Product Serial No.

Invoice / DN No.

Date of Delivery

Dealer's Office Seal

Dealer Sign

Customer Sign.

I/We accept the terms and conditions of Warranty as in the Warranty Card.

Warranty Card

DEALER'S COPY



Purchaser's Name & Address

Product Name

AMH-P888- WITH GX-35-FF **Portable Motorised Sprayer**

Product Serial No.

Invoice / DN No.

Date of Delivery

Dealer's Office Seal

Dealer Sign

Customer Sign.

I/We accept the terms and conditions of Warranty as in the Warranty Card.

Warranty Card

COMPANY COPY



Purchaser's Name & Address

Product Name

AMH-P888- WITH GX-35-FF **Portable Motorised Sprayer**

Product Serial No.

Invoice / DN No.

Date of Delivery

Dealer's Office Seal

Dealer Sign

Customer Sign.

I/We accept the terms and conditions of Warranty as in the Warranty Card.

1. **LIMITED WARRANTY PERIOD** : For a period of six months from the date of Sale / delivery of the product which ever is earlier. 2. **LIMITED WARRANTY OBLIGATION** : Replacement of defective part(s) by authorized dealer are free of charges. If found defective by reasons of defective material / poor workmanship, parts will be replaced and there will be no value re-imbursement. 3. **TERMS & CONDITIONS** : a. Claims under warranty will be accepted on submission of Warranty Card duly filled and stamped by authorized dealer together with the original purchase document. : b. Shipping / transportation / Incidental charges incurred in replacing defective parts under warranty shall be borne by the purchaser.

WARRANTY null & void if

- (i) Lack of maintenance, (ii) Incorrect use of the machine or tampering, (iii) Use of non-genuine spare parts, (iv) Usage of acids, solvents, or any flammable materials, (v) Non-usage of filter water / clear water / soft water & using water above 40°C temperature, (vi) While using the pressure washers to draw water which is contaminated with dust & solvents (eg. paint thinners, gasoline, oil, etc.), (vii) Repair done by unauthorized service people, (viii) Those parts subject to wear & tear due to normal operations and plastic parts, rubber items etc, (ix) Loose connections, faulty electrical fixtures & fluctuations in power supply.
4. Should any failure occur during or after the warranty period, customer does not have the right to interrupt payment / price discount.
5. Incidental or consequential damages like inconvenience commercial loss, loss of tie, mental agony etc.
6. Loss of any nature due to operation or non-operation is not covered under warranty.
7. All free service are at Dealer's service point only.
8. Warranty ceases if service is not done periodically.
9. The attached card should be completed and returned to Ratnagiri Impex Pvt. Ltd. for registration immediately after sale / delivery.
10. The warranty is void unless you register the warranty card with Ratnagiri Impex Pvt. Ltd.
11. The decision of Ratnagiri Impex Pvt. Ltd., in settling the warranty is final in all respects.
12. All disputes are subject to Bangalore Courts Jurisdiction

1. **LIMITED WARRANTY PERIOD** : For a period of six months from the date of Sale / delivery of the product which ever is earlier. 2. **LIMITED WARRANTY OBLIGATION** : Replacement of defective part(s) by authorized dealer are free of charges. If found defective by reasons of defective material / poor workmanship, parts will be replaced and there will be no value re-imbursement. 3. **TERMS & CONDITIONS** : a. Claims under warranty will be accepted on submission of Warranty Card duly filled and stamped by authorized dealer together with the original purchase document. : b. Shipping / transportation / Incidental charges incurred in replacing defective parts under warranty shall be borne by the purchaser.

WARRANTY null & void if

- (i) Lack of maintenance, (ii) Incorrect use of the machine or tampering, (iii) Use of non-genuine spare parts, (iv) Usage of acids, solvents, or any flammable materials, (v) Non-usage of filter water / clear water / soft water & using water above 40°C temperature, (vi) While using the pressure washers to draw water which is contaminated with dust & solvents (eg. paint thinners, gasoline, oil, etc.), (vii) Repair done by unauthorized service people, (viii) Those parts subject to wear & tear due to normal operations and plastic parts, rubber items etc, (ix) Loose connections, faulty electrical fixtures & fluctuations in power supply.
4. Should any failure occur during or after the warranty period, customer does not have the right to interrupt payment / price discount.
5. Incidental or consequential damages like inconvenience commercial loss, loss of tie, mental agony etc.
6. Loss of any nature due to operation or non-operation is not covered under warranty.
7. All free service are at Dealer's service point only.
8. Warranty ceases if service is not done periodically.
9. The attached card should be completed and returned to Ratnagiri Impex Pvt. Ltd. for registration immediately after sale / delivery.
10. The warranty is void unless you register the warranty card with Ratnagiri Impex Pvt. Ltd.
11. The decision of Ratnagiri Impex Pvt. Ltd., in settling the warranty is final in all respects.
12. All disputes are subject to Bangalore Courts Jurisdiction

1. **LIMITED WARRANTY PERIOD** : For a period of six months from the date of Sale / delivery of the product which ever is earlier. 2. **LIMITED WARRANTY OBLIGATION** : Replacement of defective part(s) by authorized dealer are free of charges. If found defective by reasons of defective material / poor workmanship, parts will be replaced and there will be no value re-imbursement. 3. **TERMS & CONDITIONS** : a. Claims under warranty will be accepted on submission of Warranty Card duly filled and stamped by authorized dealer together with the original purchase document. : b. Shipping / transportation / Incidental charges incurred in replacing defective parts under warranty shall be borne by the purchaser.

WARRANTY null & void if

- (i) Lack of maintenance, (ii) Incorrect use of the machine or tampering, (iii) Use of non-genuine spare parts, (iv) Usage of acids, solvents, or any flammable materials, (v) Non-usage of filter water / clear water / soft water & using water above 40°C temperature, (vi) While using the pressure washers to draw water which is contaminated with dust & solvents (eg. paint thinners, gasoline, oil, etc.), (vii) Repair done by unauthorized service people, (viii) Those parts subject to wear & tear due to normal operations and plastic parts, rubber items etc, (ix) Loose connections, faulty electrical fixtures & fluctuations in power supply.
4. Should any failure occur during or after the warranty period, customer does not have the right to interrupt payment / price discount.
5. Incidental or consequential damages like inconvenience commercial loss, loss of tie, mental agony etc.
6. Loss of any nature due to operation or non-operation is not covered under warranty.
7. All free service are at Dealer's service point only.
8. Warranty ceases if service is not done periodically.
9. The attached card should be completed and returned to Ratnagiri Impex Pvt. Ltd. for registration immediately after sale / delivery.
10. The warranty is void unless you register the warranty card with Ratnagiri Impex Pvt. Ltd.
11. The decision of Ratnagiri Impex Pvt. Ltd., in settling the warranty is final in all respects.
12. All disputes are subject to Bangalore Courts Jurisdiction



ratnagiri
impex
BRINGING THE BEST TO THE FUTURE - 2008

1st Free Service Coupon

ISO 9001-2008
CERTIFIED COMPANY

FREE SERVICE COUPON (30 Days / 20 hrs (Which ever is earlier))

Model

AMH-P888- WITH GX-35-FF

Portable MotorisedSprayer

PDI Date

Service No.

Purchase bill no.

Date

Dealer's Office Seal & Signature

Serial Number

Operations:

- Check and Test the Fuel Mixture.
- Check and Clean the Air Filter
- Check, Clean and Adjust the Spark plug
- Check and Adjust the Carburetor Tuning
- Check and Sharpen the cutting Tools
- Start and Check the Noise, Vibration, Loosen / Fasteners etc.
- Product familiarization on Usage
- Routine maintenance and Storage

Customer Signature.....

Conditions: Operations listed have been performed to my entire satisfaction without any labour charges. Only consumables were charged.



agriculture | horticulture | sericulture | plantations | forestry | garden | health care

WARRANTY AND FREE SERVICE COUPON



ratnagiri
impex
BRINGING THE BEST TO THE FUTURE - 2008

2nd Free Service Coupon

ISO 9001-2008
CERTIFIED COMPANY

FREE SERVICE COUPON (30 Days / 20 hrs (Which ever is earlier))

Model

AMH-P888- WITH GX-35-FF

Portable MotorisedSprayer

PDI Date

Service No.

Purchase bill no.

Date

Dealer's Office Seal & Signature

Serial Number

Operations:

- Check and Test the Fuel Mixture.
- Check and Clean the Air Filter
- Check, Clean and Adjust the Spark plug
- Check and Adjust the Carburetor Tuning
- Check and Sharpen the cutting Tools
- Start and Check the Noise, Vibration, Loosen / Fasteners etc.
- Product familiarization on Usage
- Routine maintenance and Storage

Customer Signature.....

Conditions: Operations listed have been performed to my entire satisfaction without any labour charges. Only consumables were charged.



agriculture | horticulture | sericulture | plantations | forestry | garden | health care

WARRANTY AND FREE SERVICE COUPON



ratnagiri
impex
BRINGING THE BEST TO THE FUTURE - 2008

3rd Free Service Coupon

ISO 9001-2008
CERTIFIED COMPANY

FREE SERVICE COUPON (30 Days / 20 hrs (Which ever is earlier))

Model

AMH-P888- WITH GX-35-FF

Portable MotorisedSprayer

PDI Date

Service No.

Purchase bill no.

Date

Dealer's Office Seal & Signature

Serial Number

Operations:

- Check and Test the Fuel Mixture.
- Check and Clean the Air Filter
- Check, Clean and Adjust the Spark plug
- Check and Adjust the Carburetor Tuning
- Check and Sharpen the cutting Tools
- Start and Check the Noise, Vibration, Loosen / Fasteners etc.
- Product familiarization on Usage
- Routine maintenance and Storage

Customer Signature.....

Conditions: Operations listed have been performed to my entire satisfaction without any labour charges. Only consumables were charged.



agriculture | horticulture | sericulture | plantations | forestry | garden | health care

WARRANTY AND FREE SERVICE COUPON



Small Maintenance. Big Savings.



Small Maintenance. Big Savings.



Small Maintenance. Big Savings.

Do's & Don'ts

- Always read the instruction manual supplied along with the equipments and understand the correct installation and operating procedures before attempting to use the equipments.
- It is important to use the personal protection equipments such as head helmet with visor, ear defenders, goggles, safety gloves, cut resistant shoes, trousers and jackets while operating potentially dangerous machines.
- Avoid untrained persons using the equipments. Children must not be allowed to handle these equipments.
- Always use genuine spares and accessories in repairs and usage to derive maximum life of the equipments.
- Always keep the equipments in good working condition to minimise loss of output as well as to reduce the pollution and save the environment.
- Do not use the machine within range of persons unless they wear protective clothing.
- Do not operate the machine when fatigued or under the influence of alcohol or drugs.
- When the machine is running, please maintain a constant water supply. Without water circulation will damage the sealing rings of the machine.
- For more query kindly contact for our Service Center/Dealer/ franchise

Agrimate Army For Pest Control

ANY WHERE - ANY TIME - ANY CROP




AGRIMATE®
Maximum Power - Super Economy

RATNAGIRI IMPEX PVT LTD
Annapurna House, #1/1G, 7th Cross, New Guddadahalli
Mysore Road, Bangalore-560 026
Customer Care: 1800-425-3036
email: marketing@ratnagiriimpex.com



Marketed by:

**ratnagiri
impex**
BRINGING YOU THE FUTURE... NOW

www.ratnagiriimpex.com

AN ISO 9001:2008 CERTIFIED COMPANY