

AGRIMATE PORTABLE POWER SPRAYER AMP-435S-15DH-4S-PRO

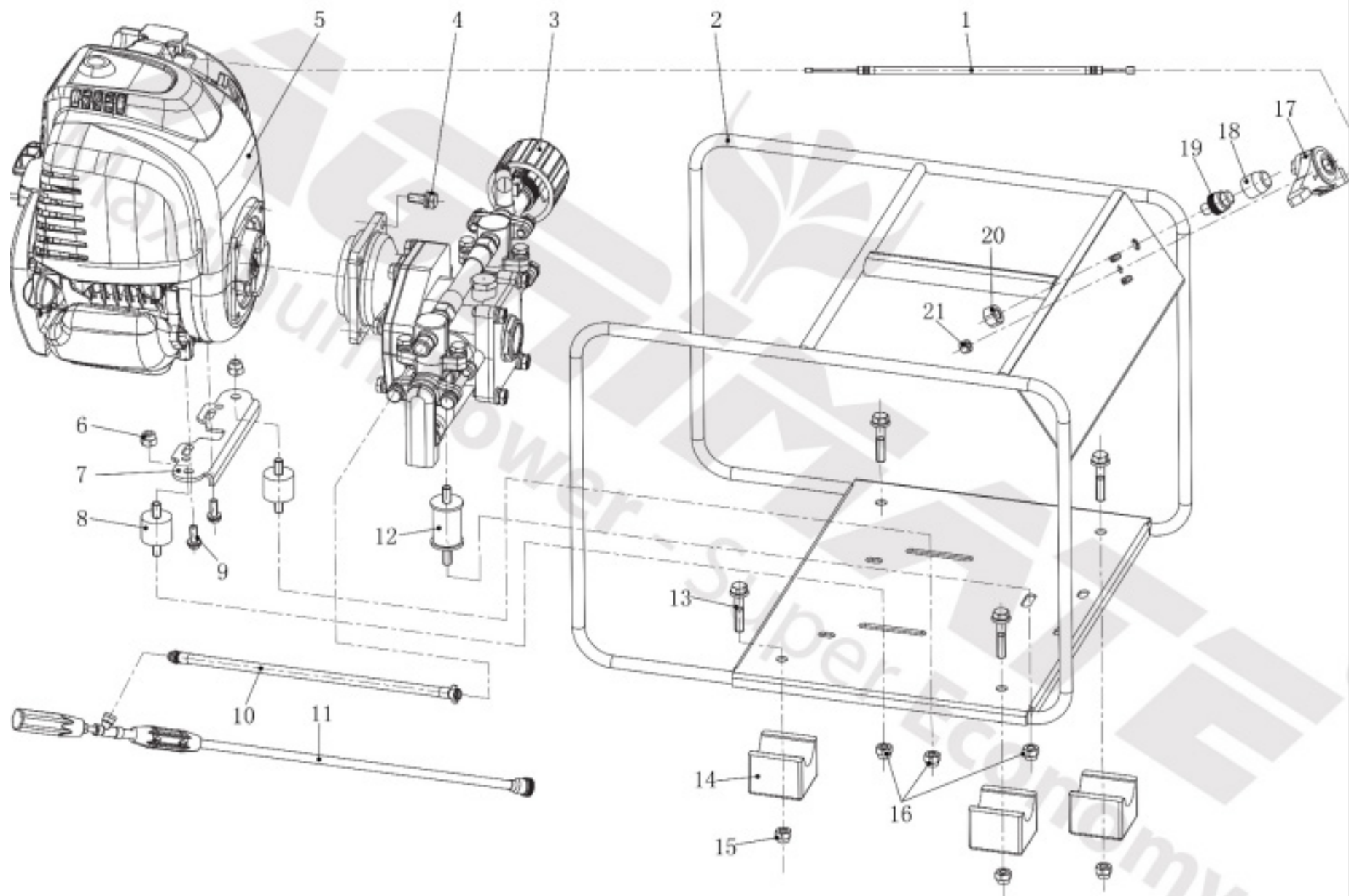


AN ISO 9001 : 2015 CERTIFIED COMPANY

TECHNICAL SPECIFICATIONS

MODEL	AMP-435S-15DH-4S-PRO
ENGINE MODEL	AX-35
ENGINE TYPE	AIR COOLED , 4S SINGLE CYLINDER
DISPLACEMENT	35.8CC
POWER	1.0KW/6500RPM/1.3HP
Carburetor	Diaphragm type
Start system	Recoil starter
Fuel tank capacity	0.75L

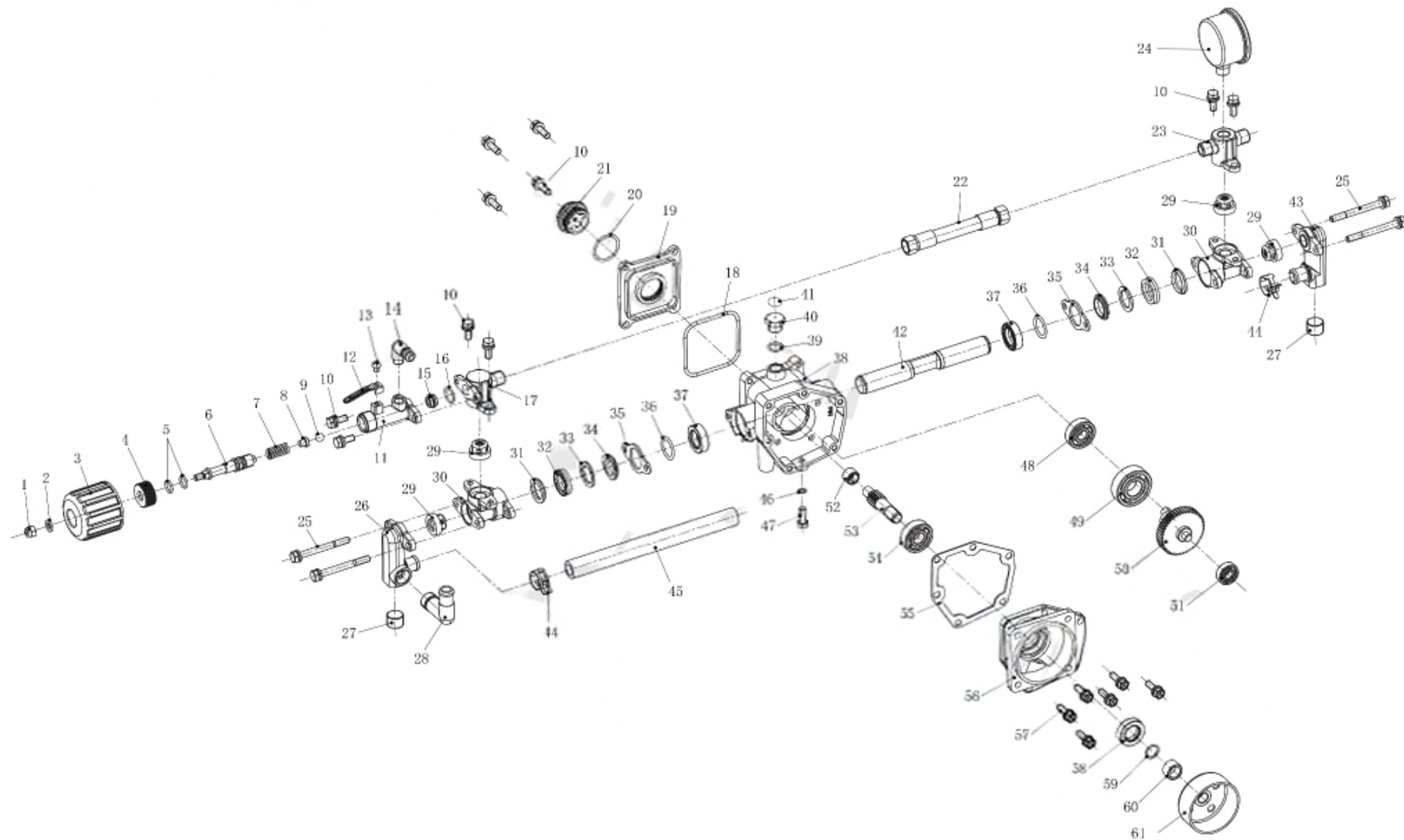
STAND DIAGRAM & PARTS LIST OF AM-K435S-25TG-4S-PRO



STAND DIAGRAM & PARTS LIST OF AM-K435S-25TG-4S-PRO

SL NO.	PART NUMBER	DESCRIPTION	SL NO.	PART NUMBER	DESCRIPTION
1	AMP-435F-4SS01	Cable	17	AMP-435F-4SS17	Flex Accelator
2	AMP-435F-4SS02	Frame	18	AMP-435F-4SS18	Engine Stop Protector
3	AMP-435F-4SS03	Pump with ceramic plunger	19	AMP-435F-4SS19	Engine Stop Switch
4	AMP-435F-4SS04	Bolt	20	AMP-435F-4SS20	Nut
5	AMP-435F-4SS05	Engine	21	AMP-435F-4SS21	Nut
6	AMP-435F-4SS06	Screw			
7	AMP-435F-4SS07	Engine Stand			
8	AMP-435F-4SS08	Joint (Engine)			
9	AMP-435F-4SS09	Bolt			
10	AMP-435F-4SS10	Hose			
11	AMP-435F-4SS11	Straight Gun			
12	AMP-435F-4SS12	Joint (Pump)			
13	AMP-435F-4SS13	Joint			
14	AMP-435F-4SS14	Joint			
15	AMP-435F-4SS15	Nut			
16	AMP-435F-4SS16	Nut			

PUMP DIAGRAM & PARTS LIST OF AM-K435S-25TG-4S-PRO



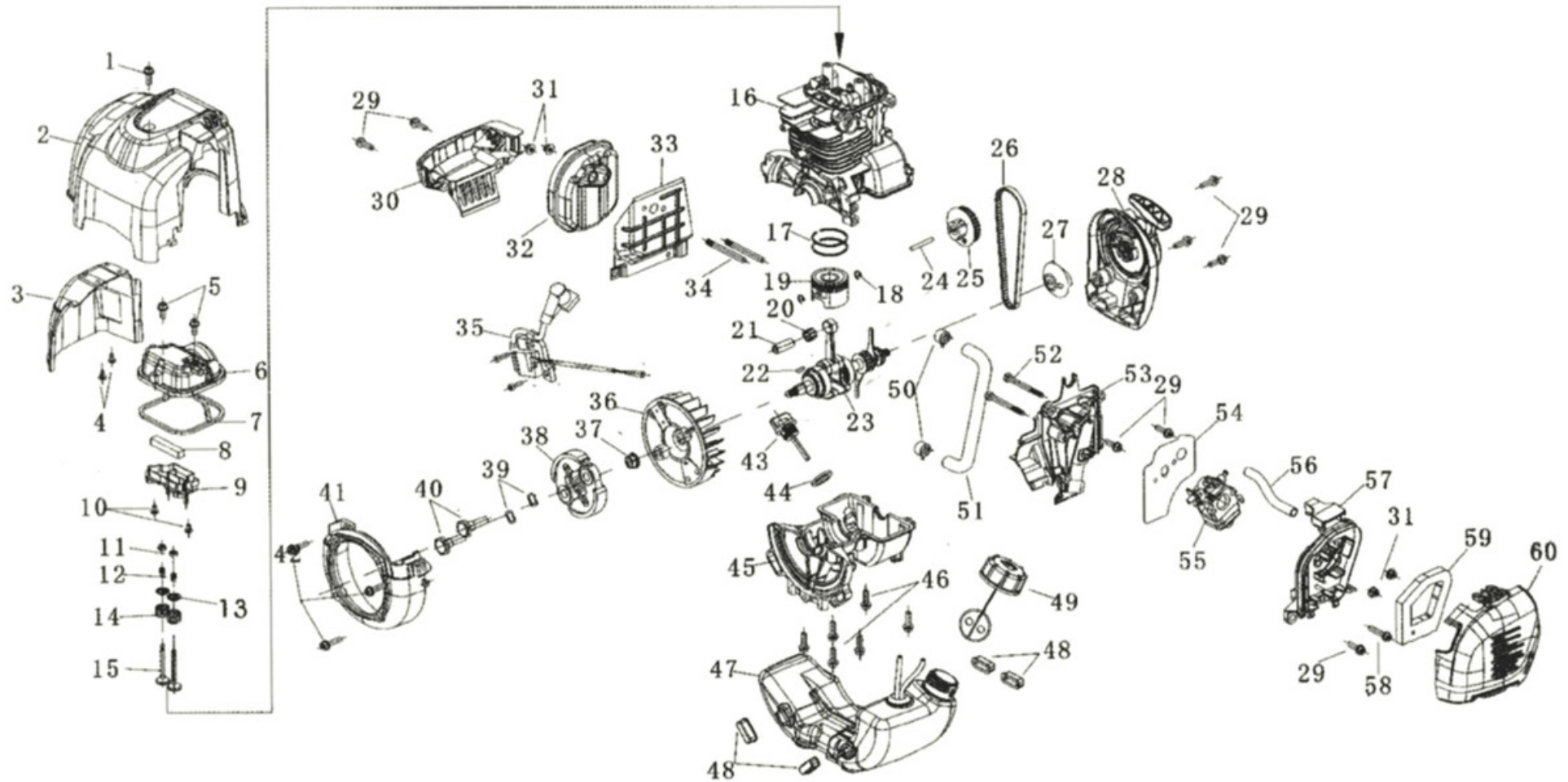
PUMP DIAGRAM & PARTS LIST OF AM-K435S-25TG-4S-PRO

SL NO.	PART NUMBER	DESCRIPTION	SL NO.	PART NUMBER	DESCRIPTION
1	AMP-435F-4SP01	Nut	17	AMP-435F-4SP17	Bolt
2	AMP-435F-4SP02	Washer	18	AMP-435F-4SP18	Outletpressure hose
3	AMP-435F-4SP03	Pressre Adjusting	19	AMP-435F-4SP19	Outlet chamber double Hole
4	AMP-435F-4SP04	Lock Handle	20	AMP-435F-4SP20	Valve Assy
5	AMP-435F-4SP05	Nut	21	AMP-435F-4SP21	Bolt
6	AMP-435F-4SP06	Ring	22	AMP-435F-4SP22	Suction pipe double hole
7	AMP-435F-4SP07	Pressure valve Spring	23	AMP-435F-4SP23	Nut
8	AMP-435F-4SP08	Spring	24	AMP-435F-4SP24	Suction pipe
9	AMP-435F-4SP09	Valve Rod	25	AMP-435F-4SP25	Cylinder
10	AMP-435F-4SP10	Bolt	26	AMP-435F-4SP26	Gease Seat
11	AMP-435F-4SP11	Valve ball	27	AMP-435F-4SP27	packing Seat
12	AMP-435F-4SP12	Pressure valve case	28	AMP-435F-4SP28	V Packing
13	AMP-435F-4SP13	Valve seat	29	AMP-435F-4SP29	Gease Seat
14	AMP-435F-4SP14	Pipe	30	AMP-435F-4SP30	Grease Packing
15	AMP-435F-4SP15	O- Ring	31	AMP-435F-4SP31	Adjusting Ring
16	AMP-435F-4SP16	Outlet Chamber	32	AMP-435F-4SP32	Fixed Seat

PUMP DIAGRAM & PARTS LIST OF AM-K435S-25TG-4S-PRO

SL NO.	PART NUMBER	DESCRIPTION	SL NO.	PART NUMBER	DESCRIPTION
33	AMP-435F-4SP33	O- Ring	49	AMP-435F-4SP49	Drum Case
34	AMP-435F-4SP34	Oil Seal	50	AMP-435F-4SP50	O Ring
35	AMP-435F-4SP35	Paster	51	AMP-435F-4SP51	Pipe
36	AMP-435F-4SP36	Bolt	52	AMP-435F-4SP52	Clutch Drum
37	AMP-435F-4SP37	Plunger	53	AMP-435F-4SP53	Bearing
38	AMP-435F-4SP38	Cylinder Double Hole	54	AMP-435F-4SP54	Bearing
39	AMP-435F-4SP39	Suction Pipe	55	AMP-435F-4SP55	Gear
40	AMP-435F-4SP40	Oil Glass	56	AMP-435F-4SP56	Bearing
41	AMP-435F-4SP41	O-Ring	57	AMP-435F-4SP57	Clip
42	AMP-435F-4SP42	Lid	58	AMP-435F-4SP58	Cylinder
43	AMP-435F-4SP43	O-Ring	59	AMP-435F-4SP59	O-Ring
44	AMP-435F-4SP44	Crank case	60	AMP-435F-4SP60	Bolt
45	AMP-435F-4SP45	Bearing			
46	AMP-435F-4SP46	Gear Shaft			
47	AMP-435F-4SP47	Bearing			
48	AMP-435F-4SP48	Gasket			

ENGINE DIAGRAM & PARTS LIST OF AMP-435S-15DH-4S-PRO



ENGINE DIAGRAM & PARTS LIST OF AMP-435S-15DH-4S-PRO

SL NO.	PART NO.	DESCRIPTION	SL NO.	PART NO.	DESCRIPTION
1	AMP-435F-4S-E01	Screw	17	AMP-435F-4S-E17	Piston Ring
2	AMP-435F-4S-E02	Cylinder Cover	18	AMP-435F-4S-E18	Piston
3	AMP-435F-4S-E03	Muffler Cover	19	AMP-435F-4S-E19	Piston Ring
4	AMP-435F-4S-E04	Screws	20	AMP-435F-4S-E20	Needle Valve
5	AMP-435F-4S-E05	Screw	21	AMP-435F-4S-E21	Piston Pin
6	AMP-435F-4S-E06	Cylinder Head	22	AMP-435F-4S-E22	Semi-Key
7	AMP-435F-4S-E07	Sealing For Cylinder Head	23	AMP-435F-4S-E23	Crankshaft
8	AMP-435F-4S-E08	Filter	24	AMP-435F-4S-E24	Gear Shaft
9	AMP-435F-4S-E09	Oil Return Plate	25	AMP-435F-4S-E25	Cam Wheel
10	AMP-435F-4S-E10	Screw	26	AMP-435F-4S-E26	Timing Belt
11	AMP-435F-4S-E11	Adjusting Nut	27	AMP-435F-4S-E27	Oil Pump
12	AMP-435F-4S-E12	Adjusting Screw	28	AMP-435F-4S-E28	Recoil Starter
13	AMP-435F-4S-E13	Valve Lock	29	AMP-435F-4S-E29	Screw
14	AMP-435F-4S-E14	Valve Cover	30	AMP-435F-4S-E30	Baffle
15	AMP-435F-4S-E15	Valve	31	AMP-435F-4S-E31	Nut
16	AMP-435F-4S-E16	Cylinder	32	AMP-435F-4S-E32	Muffler

ENGINE DIAGRAM & PARTS LIST OF AMP-435S-15DH-4S-PRO

SL NO.	PART NO.	DESCRIPTION	SL NO.	PART NO.	DESCRIPTION
33	AMP-435F-4S-E33	Heat Insulation	48	AMP-435F-4S-E48	Anti-Vibration Gasket
34	AMP-435F-4S-E34	Screws	49	AMP-435F-4S-E49	Fuel Tank Cap
35	AMP-435F-4S-E35	Ignition Coil	50	AMP-435F-4S-E50	Clip
36	AMP-435F-4S-E36	Flywheel	51	AMP-435F-4S-E51	Oil Pipe
37	AMP-435F-4S-E37	Nut	52	AMP-435F-4S-E52	Screw
38	AMP-435F-4S-E38	Clutch	53	AMP-435F-4S-E53	Gasket
39	AMP-435F-4S-E39	Washer	54	AMP-435F-4S-E54	Carburetor
40	AMP-435F-4S-E40	Clutch Screw	55	AMP-435F-4S-E55	Exhaust Pipe
41	AMP-435F-4S-E41	Side Cover	56	AMP-435F-4S-E56	Air Filter Base
42	AMP-435F-4S-E42	Screw	57	AMP-435F-4S-E57	Screw
43	AMP-435F-4S-E43	Oil Dipsticks	58	AMP-435F-4S-E58	Air Element
44	AMP-435F-4S-E44	O-Ring	59	AMP-435F-4S-E59	Air Filter Cover
45	AMP-435F-4S-E45	Crankcase			
46	AMP-435F-4S-E46	Screw			
47	AMP-435F-4S-E47	Fuel Tank			

Safety and Maintenance Guidelines

- Pre-Use Inspection: Before operation, check the filter and nozzle for impurities and ensure they are clean.
 - Regular Cleaning: Clean the machine every three months to ensure optimal performance and safety.
 - Post-Use Maintenance: After use, remove any remaining water from the pump and hose to prevent damage.
 - Repairs and Warranty: If repairs are required during the warranty period, return the machine to the service centre along with the invoice copy for servicing or replacement.
 - Storage and Packaging: Before storing, clean the machine thoroughly. Use secure, closed packaging and store it in a dry place.
 - Transportation Compliance: Ensure the machine meets ISTA (International Safe Transit Association) standards for safe transport.
- Proper Disposal:**
- o Do not dispose of electrical machines as unsorted municipal waste. Use designated collection facilities.
 - o Improper disposal in landfills or dumps may release hazardous substances into groundwater, contaminating the environment and posing health risks.
 - o When replacing an old machine, retailers are legally required to accept and dispose of it free of charge.

INSPECTION & MAINTAINANCE

For safety use, make sure the machine is cleaned every three months. Before working, make sure to inspect the filter and the nozzle and ensure there is no impurity. After working, make sure there is no water in the pump and the hose.

If the machine needs to be repaired in the guarantee period, please return the machine to the shop. You need to provide the certificate of purchase on order to repair or get the substitute.

Before packing, the machine should be cleaned, then use closed packaging, packaging should be firm. Store the machine in dry place.

For transportation safety. The machine should comply with ISTA.

Do not dispose of electrical machines as unsorted municipal waste, use separate collection facilities.

If electrical machines are disposed of in landfills or dumps, hazardous substances can leak into the ground water and get into the food chain, damaging your health and well being.

When replacing old machines with new ones, the retailer is legally obligated to take back your old machine for disposals at least free of charge.

WARRANTY CARD

CUSTOMER COPY

DATE _____	DATE OF DELIVERY _____	DEALERS OFFICIAL SEAL	DEALERS SIGN _____
PURCHASERS NAME & ADDRESS _____ _____ _____	<div>CUSTOMER SIGN</div>	<div></div>	
PRODUCT NAME	PRODUCT SERIAL NO.	INVOICE/DN NO.	
<div></div>	<div></div>	<div></div>	
I/Will accept the terms and conditions of warranty as in the warranty card			

DEALERS COPY

DATE _____	DATE OF DELIVERY _____	DEALERS OFFICIAL SEAL	DEALERS SIGN _____
PURCHASERS NAME & ADDRESS _____ _____ _____	<div>CUSTOMER SIGN</div>	<div></div>	
PRODUCT NAME	PRODUCT SERIAL NO.	INVOICE/DN NO.	
<div></div>	<div></div>	<div></div>	
I/Will accept the terms and conditions of warranty as in the warranty card			

COMPANY COPY

DATE _____	DATE OF DELIVERY _____	DEALERS OFFICIAL SEAL	DEALERS SIGN _____
PURCHASERS NAME & ADDRESS _____ _____ _____	<div>CUSTOMER SIGN</div>	<div></div>	
PRODUCT NAME	PRODUCT SERIAL NO.	INVOICE/DN NO.	
<div></div>	<div></div>	<div></div>	
I/Will accept the terms and conditions of warranty as in the warranty card			

1. LIMITED WARRANTY PERIOD : For a period of six months from the date of Sale / delivery of the product which ever is earlier. 2. LIMITED WARRANTY OBLIGATION : Replacement of defective part(s) by authorized dealer are free of charges. If found defective by reasons of defective material / poor workmanship, parts will be replaced and there will be no value re-imbursement. 3. TERMS & CONDITIONS : a. Claims under warranty will be accepted on submission of Warranty Card duly filled and stamped by authorized dealer together with the original purchase document. : b. Shipping / transportation / Incidental charges incurred in replacing defective parts under warranty shall be borne by the purchaser

WARRANTY null & void if
(i) Lack of maintenance, (ii) Incorrect use of the machine or tampering, (iii) Use of non-genuine spare parts, (iv) Usage of acids, solvents, or any flammable materials, (v) Non-usage of filter water / clear water / soft water & using water above 40°C temperature, (vi) While using the pressure washers to draw water which is contaminated with dust & solvents (eg. paint thinners, gasoline, oil, etc.), (vii) Repair done by unauthorized service people, (viii) Those parts subject to wear & tear due to normal operations and plastic parts, rubber items etc, (ix) Loose connections, faulty electrical fixtures & fluctuations in power supply.
4. Should any failure occur during or after the warranty period, customer does not have the right to interrupt payment / price discount.
5. Incidental or consequential damages like inconvenience commercial loss, loss of tie, mental agony etc.
6. Loss of any nature due to operation or non-operation is not covered under warranty.
7. All free service are at Dealer's service point only.
8. Warranty ceases if service is not done periodically.
9. The attached card should be completed and returned to Ratnagiri Impex Pvt. Ltd. for registration immediately after sale / delivery.
10. The warranty is void unless you register the warranty card with Ratnagiri Impex Pvt. Ltd.
11. The decision of Ratnagiri Impex Pvt. Ltd., in settling the warranty is final in all respects.
12. All disputes are subject to Bangalore Courts Jurisdiction

1. LIMITED WARRANTY PERIOD : For a period of six months from the date of Sale / delivery of the product which ever is earlier. 2. LIMITED WARRANTY OBLIGATION : Replacement of defective part(s) by authorized dealer are free of charges. If found defective by reasons of defective material / poor workmanship, parts will be replaced and there will be no value re-imbursement. 3. TERMS & CONDITIONS : a. Claims under warranty will be accepted on submission of Warranty Card duly filled and stamped by authorized dealer together with the original purchase document. : b. Shipping / transportation / Incidental charges incurred in replacing defective parts under warranty shall be borne by the purchaser.
WARRANTY null & void if
(i) Lack of maintenance, (ii) Incorrect use of the machine or tampering, (iii) Use of non-genuine spare parts, (iv) Usage of acids, solvents, or any flammable materials, (v) Non-usage of filter water / clear water / soft water & using water above 40°C temperature, (vi) While using the pressure washers to draw water which is contaminated with dust & solvents (eg. paint thinners, gasoline, oil, etc.), (vii) Repair done by unauthorized service people, (viii) Those parts subject to wear & tear due to normal operations and plastic parts, rubber items etc, (ix) Loose connections, faulty electrical fixtures & fluctuations in power supply.
4. Should any failure occur during or after the warranty period, customer does not have the right to interrupt payment / price discount.
5. Incidental or consequential damages like inconvenience commercial loss, loss of tie, mental agony etc.
6. Loss of any nature due to operation or non-operation is not covered under warranty.
7. All free service are at Dealer's service point only.
8. Warranty ceases if service is not done periodically.
9. The attached card should be completed and returned to Ratnagiri Impex Pvt. Ltd. for registration immediately after sale / delivery.
10. The warranty is void unless you register the warranty card with Ratnagiri Impex Pvt. Ltd.
11. The decision of Ratnagiri Impex Pvt. Ltd., in settling the warranty is final in all respects.
12. All disputes are subject to Bangalore Courts Jurisdiction

1. LIMITED WARRANTY PERIOD : For a period of six months from the date of Sale / delivery of the product which ever is earlier. 2. LIMITED WARRANTY OBLIGATION : Replacement of defective part(s) by authorized dealer are free of charges. If found defective by reasons of defective material / poor workmanship, parts will be replaced and there will be no value re-imbursement. 3. TERMS & CONDITIONS : a. Claims under warranty will be accepted on submission of Warranty Card duly filled and stamped by authorized dealer together with the original purchase document. : b. Shipping / transportation / Incidental charges incurred in replacing defective parts under warranty shall be borne by the purchaser.
WARRANTY null & void if
(i) Lack of maintenance, (ii) Incorrect use of the machine or tampering, (iii) Use of non-genuine spare parts, (iv) Usage of acids, solvents, or any flammable materials, (v) Non-usage of filter water / clear water / soft water & using water above 40°C temperature, (vi) While using the pressure washers to draw water which is contaminated with dust & solvents (eg. paint thinners, gasoline, oil, etc.), (vii) Repair done by unauthorized service people, (viii) Those parts subject to wear & tear due to normal operations and plastic parts, rubber items etc, (ix) Loose connections, faulty electrical fixtures & fluctuations in power supply.
4. Should any failure occur during or after the warranty period, customer does not have the right to interrupt payment / price discount.
5. Incidental or consequential damages like inconvenience commercial loss, loss of tie, mental agony etc.
6. Loss of any nature due to operation or non-operation is not covered under warranty.
7. All free service are at Dealer's service point only.
8. Warranty ceases if service is not done periodically.
9. The attached card should be completed and returned to Ratnagiri Impex Pvt. Ltd. for registration immediately after sale / delivery.
10. The warranty is void unless you register the warranty card with Ratnagiri Impex Pvt. Ltd.
11. The decision of Ratnagiri Impex Pvt. Ltd., in settling the warranty is final in all respects.
12. All disputes are subject to Bangalore Courts Jurisdiction

FREE SERVICE COUPON (30DAYS/30HRS. WHICHEVER IS EARLIER)

MODEL

SERIAL NUMBER

PDI DATE

SERVICE NO.

PURCHASE BILL NO.

DATE

DEALERS OFFICE SEAL

1. Check and test the fuel mixture
3. Check , clean and adjust the spark plug
5. Check and sparken the cutting tools
7. Start and check the noise, vibration, loosen etc..

OPERATIONS

2. check and clean the air filter
4. Check and adjust the carburetor tuning
6. Product familiarisation on usage
8. Routine maintenance and shortage.

FREE SERVICE COUPON (30DAYS/30HRS. WHICHEVER IS EARLIER)

MODEL

SERIAL NUMBER

PDI DATE

SERVICE NO.

PURCHASE BILL NO.

DATE

DEALERS OFFICE SEAL

1. Check and test the fuel mixture
3. Check , clean and adjust the spark plug
5. Check and sparken the cutting tools
7. Start and check the noise, vibration, loosen etc..

OPERATIONS

2. check and clean the air filter
4. Check and adjust the carburetor tuning
6. Product familiarisation on usage
8. Routine maintenance and shortage.

FREE SERVICE COUPON (30DAYS/30HRS. WHICHEVER IS EARLIER)

MODEL

SERIAL NUMBER

PDI DATE

SERVICE NO.

PURCHASE BILL NO.

DATE

DEALERS OFFICE SEAL

1. Check and test the fuel mixture
3. Check , clean and adjust the spark plug
5. Check and sparken the cutting tools
7. Start and check the noise, vibration, loosen etc..

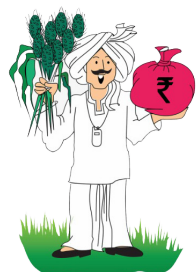
OPERATIONS

2. check and clean the air filter
4. Check and adjust the carburetor tuning
6. Product familiarisation on usage
8. Routine maintenance and shortage.

DOS & DONTs

1. Always read the instruction manual supplied along with the equipments and understand the correct installation and operating procedures before attempting to use the equipments.
2. It is important to use the personal protection equipments such as head helmet with visor, ear defenders, goggles, safety gloves, cut resistant shoes, trousers and jackets while operating potentially dangerous machines
3. Avoid untrained persons using the equipments. Children must not be allowed to handle these equipments
4. Always use genuine spares and accessories in repairs and usage to derive maximum life of the equipments.
5. Always keep the equipments in good working condition to minimize loss of output as well as to reduce the pollution and save the environment
6. Do not use the machine within range of persons unless they wear protective clothing
7. Do not operate the machine when fatigued or under the influence of alcohol or drugs
8. When the machine is running, please maintain a constant water supply. Without water circulation will damage the sealing rings of the machine.
9. For more query kindly contact for our Service Center/Dealer/ franchise

AGRIMATE MULTI PURPOSE EQUIPMENT ANYWHERE - ANYTIME - ANY CROP



**ratnagiri[®]
impex**

BRINGING YOU THE FUTURE... NOW

IMPORTED & MARKETING BY,

RATNAGIRI IMPEX PVT., LTD.,

Annapurna House, #1 / 1G, 7th Cross, New

Guddadahalli Mysore Road, Bangalore - 560 026

Missed Call : 7393 938 938 Email: ask@agrimart.in