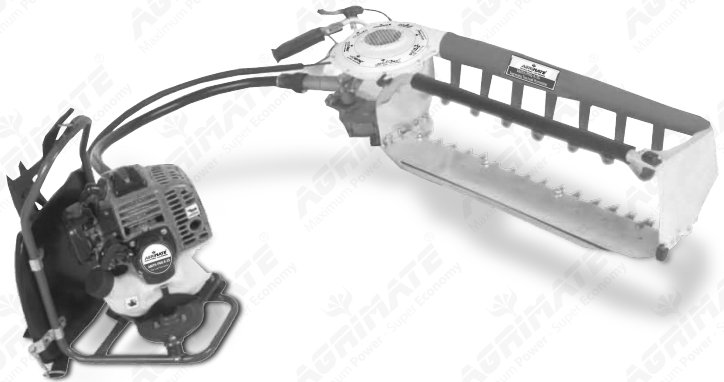


AMTH-PRO-K-2S

Agrimate

Kawasaki Tea leaf Harvester



OPERATION AND MAINTENANCE MANUAL

DISCLAIMER: DUE TO CONSTANT UPGRADATION, FEATURES AND SPECIFICATIONS ARE SUBJECT TO CHANGE WITHOUT NOTICE



BEFORE OPERATING THIS MACHINE,
PLEASE READ THESE INSTRUCTIONS CAREFULLY

INTRODUCTION

Notes on safety

I. Preface

Thank you for your purchase and use of our products. In order to avoid accidents or injury, please read this instruction and the instruction of gasoline engine carefully before using. After reading, please keep the instruction carefully for further reference.

II. Notes on safety

1. Any one who borrows the machine or is unclear on its operation shall accept instruction on safe job before operating the machine.
2. The following persons shall not be allowed to operate the machine:
(1) the drunk; (2) mental patient; (3) children, pregnant woman; (4) the tired, the sick and the drug anaphylactic.
3. Operation's apparel
(1) Please wear long-sleeve clothing and long trousers. Do not wear wide-sleeve clothing or wide trousers.
(2) Please wear brimmed cap and protection glasses.
(3) Wear the gloves during inspection and maintenance.
(4) Please wear anti-slip shoes.
4. No Firing or smoking
(1) Don't store the fuel at ignitable places.
(2) Don't smoke when starting the engine or replenishing oil.
(3) Stop the engine when replenishing oil, in case of turning over of machine or spattering fuel onto machine body. Please wipe out the fuel on the machine body with dry cloth.

III. Connection of AMTH-PRO-K-2S tea plucker

1. Pull the flexible pin on the power take-off pore. Insert the flexible shaft-blanket's with a hole into the hole.
2. Turning round the flexible shaft-blanket, insert the flexible pin into the hole so this end has been fixed.
3. At the end of the flexible shaft-blanket with the slot, turning round the quadrate flexible shaft synchronously, insert the hole of the power.
4. Adjust the flexible shaft to meet the quadrate hole. Put the flexible shaft-blanket with slot into the socket.
5. Insert the flexible shaft-pin and put the split pin on. So the installation of the flexible shaft is over.

IV. Notes before operation

1. Before operation, please make inspection and necessary adjustment and apply for repair in case of abnormalities. If there are any abnormalities, please repair the machine in the authorized store.
2. Inspection before operation

Location	Check content	Correction
Appearance	Wearing-out or loosing	Reinforcing
Fasteners	Loosing	Reinforcing
Gearbox	Sufficient grease	Replenishing every 20 to 30 hours
Blades	Rounding, breaking or deformation of blades	Replacing the components
	Lubricating of blades	Lubricating
Air filter	Contamination	Cleaning
Oil tank	Sufficient fuel and loosing of tank cover	Replenishing or reinforcing
Throttle Switch	Smooth operation	Adjusting or replacing components
Gasoline engine switch	Proper on/off operation	Replacing components
Nut handle	Proper adjustment of gap between blades	Adjusting
	Proper fixation of handle	Adjusting

V. Notes during operation

1. Inspection of fuel must use the mixture of 92# ordinary gasoline and 2-stroke machine oil. The mixing ratio shall be correct. At the first 20 hours, 92# gasoline: 2-stroke machine oil = 20:1 (by volume), and then change into 25:1.
2. The gasoline engine can't suddenly stop. The speed has been adjusted to 2300-2700 round/min. Don't change it freely.
3. Every hour the blades worked, it should be oiled with HG-10# lubricating oil. The space between the blades should be adjusted correctly.
4. Every 8~10 hours fill the gearbox with ZFG-2 lubricating oil once a time.
5. Avoid great impacts when moving the machine.
6. This machine can not be used as cropper.
7. When the gasoline engine is working, don't touch the blades even when the clutch is apart.

8. When finishing working or moving even for a short distance, do shut off the gasoline engine.
9. When working, do not touch the spark plug.
10. The banding angular magnitude of flexible shaft can't be too big to break. Before working, insert the flexible shaft with grease on it into the flexible duct and pull it for several times.

VI. Starting and stopping of the gasoline engine

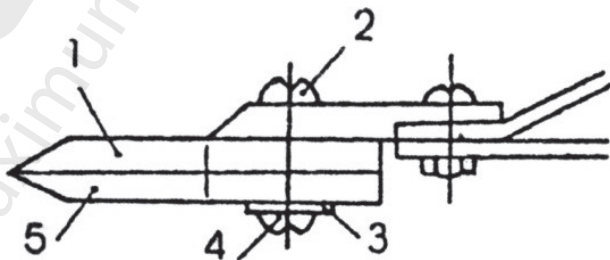
1. Press the oil pump for several times before working. The fuel goes into the carburetor. All the throttles should be shut off.
2. When the gasoline engine is under cool state or in winter, close the red chocker of carburetor when open the electric circuit.
3. Fix the machine and pull the starting rope.
4. After starting, add the throttle for a little and run free for 2~3 minutes to warm-up. Later, add the throttle and work normally.
5. Stopping: Switch the throttle to low-speed to slow it down. Work 2~3 minutes for cold running and then switch off the machine.

VII. Maintenance and adjustment

1. Because the blades work at a high speed, it should be oiled once per hour during working. Please use HG-10# lubricating oil.
2. Inspect and adjust the space between blades. After some time of working, blades are worn and screws are loose. These can change the normal space (about 0.05 mm), so please pay regular attention to their working condition.

Inspect the firmness of the screws and the space between the blades. Improper space may reduce the working ability of machine. Too large space may let the blades easy to be broken. It does not only reduce the quality of tea, but also make the surface of tea tree unsmooth. Too small space may lead to a large load and hardship of working or scathe the blades.

1. Upper blade
2. Nut;
3. Washer;
4. M6 screw;
5. bottom blade



The space between the edges can be adjusted as following:

- Unscrew the nut
- Use the plus driver to screw the screw to the end lightly and then turn back 3/8 round
- Screw the nut tightly. The adjusting washer should be flexible.
- Add the lubricating oil on the blades.
- Start the gasoline engine and let the blades work at high speed for 1 minute.
- Switch off the gasoline engine and touch the nut. If hands can undergo the temperature, it means the adjustment is successful. If hands feel hot, loosen the crew for a little, and adjust it until it is OK. (Notice: Please adjust it when the machine is shut off. The screw should be in the narrow hole. If there is dirt in it, please clean it.)

3. Keep the air-feed system clean

4. Cleaning of the carbon in the spark plug and adjustment of the space. Every 25 hours after working, please take off the spark plug and clean it. Adjust the space between the electrodes (0.5–0.6 mm).

5. Dismantle the air cleaner after 15 hours' work. Use the gasoline to clean it thoroughly. Then dry and reinstall it. Dismantle the casing lid: clean the carbon and the dirt.

6. Cleaning of carburetor. When working on the bad conditions, carbon powder and dusts on the tree may contaminate the machine, so besides cleanings after work every time, cleanings after every 100 hours' work are necessary. (Cleanings must be held when the oil box is switch off.)

(Note: The inside parts has matched the machine, please do not adjust it freely.)

7. No use for long time

- When the machine is cool off, let the fuel go out and press the oil pump so the fuel remaining in the pump goes back to the oil tank. At last, empty the fuel in the oil tank.
- Take off the spark plug, and drop the oil into the hole. Pull the starter so the oil covers the inner well. Put the spark plug back.
- Clean outside parts, blades and blade edge press-pieces of the machine. Put it in a dry room.

Problematic parts need repair. Necessary repairs must be committed to the appointed repairer in the authorized shop.

VIII. Problems solving

1. Starting problems

Difference	Cause	Correction	
Lighting a fire without a spark	Spark plug	<ol style="list-style-type: none"> 1)The electrodes are damped. 1)The electrodes are damped. 2)The deposited carbon in the electrodes of spark plug. 3)The rimous insulator of the electrode or insulate bad. 4)Space between electrodes is too small or too large. 5)The electrodes are overheated 	<ol style="list-style-type: none"> 1) Drying 2) Cleaning 3) Replacing 4) Adjust it to 0.5–0.6mm 5) Replacing it
Lighting a fire with a spark	Good compression	<ol style="list-style-type: none"> 1)High density of the fuel 2)Bad quality of the fuel 	<ol style="list-style-type: none"> 1)Adjusting carburetor 2)Use better fuel
	Bad compression	The casing, piston and the piston ring has been badly worn and torn	Replacing
	Carburetor	<ol style="list-style-type: none"> 1)Lack of fuel 2)Measuring hole jammed 3)Cleaner-net jammed 	<ol style="list-style-type: none"> 1) Fill the fuel 2) Clearing 3) Clearing
	Fail to supply the fuel	Fasteners' loosing	Reinforcing

2. Power lacking

Difference	Cause	Correction
Good compression but fail to burn	1) Air goes into the seam of the fuel pump 2) Air goes into the carburetor 3) Water mixed into the fuel 4) Burn smell in the piston 5) Surround some carbon	1) Reinforcing 2) Changing the seal or reinforcing 3) Use the good quality fuel 4) Clean every components carefully 5) Decompounding and clearing
Overheated	1) Low density of the fuel 2) Dusts on the fan guard and the cylinder fin	1) Adjust the carburetor 2) Clearing
Having the tendency to have noise	1) Quality of the fuel is not so good 2) Carbon in the fuel room	1) Change into good fuel 2) Clearing
Others	1) Air-cleaner is blocked 2) Overload	1) Clean the block 2) Limit the load

3. Stopping during working

Difference	Cause	Correction
Stop abruptly when working	1) Piston sintering 2) Short circuit of the electrode due to the carbon 3) Problems of the inner part of the magneto electric 4) Sparking cap jumps out	1) Use a file to clean the piston and casing. The damaged ring should be changed 2) Cleaning 3) Dismantle and inspect it 4) Embed it as before
Stop with running speed descend	1) Lacking fuel 2) Blocking in the inner part of the carburetor 3) Water mixed into fuel	1) Fill the fuel 2) Inspection and clearing 3) Empty it and refill the fuel

4. Stopping hardship

Difference	Cause	Correction
Gasoline engine	Overheat of casing and piston, spontaneous combustion	Clearing carbon of casing and piston
Others	1) Heating top of spark plug 2) Dropping connecting wire	1) Clearing electrode and adjusting gap 0.5~0.6 mm 2) Reconnecting

IX. Appendix

1. Technical parameter

Model	AMTH-PRO-K-2S
Plucking Width (mm)	600
Transmission Ratio	4.214
Implementation Standard	Q/ZCQ 001-2012
Weight (Kg)	9.5
Dimension L × W × H mm	800 x 280 x 200

2. Gasoline engine data

Displacement (cc)	25.6
Maximum power (KW/r/min)	0.67/7500
Capacity of oil tank (L)	0.6
Mixing ratio (By volume)	20:1
	25:1

3. Accessory list

No.	Description	Format
1	Tea collecting bag	Small
2	Oil tank	
3	Oil tank for mixing	
4	Spark plug box (socket) spanner	Specialized
5	Operation instruction	

SPARE PARTS DIAGRAM OF AMTH-PRO-K-2S - BLOWER



AMTH-K-2S-B1
Fan Seating



AMTH-K-2S-B2
Flexible Shaft Seating



AMTH-K-2S-B3
Drive shaft



AMTH-K-2S-B4
Fastening ring



AMTH-K-2S-B5
Bush



AMTH-K-2S-B6
Left handle



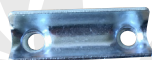
AMTH-K-2S-B7
Cover plate



AMTH-K-2S-B8
Clamp cover



AMTH-K-2S-B9
Gearbox upper



AMTH-K-2S-B10
Left handle fastening plate



AMTH-K-2S-B11
Gearbox lower



AMTH-K-2S-B12
Pinion



AMTH-K-2S-B13
Clamp Cover



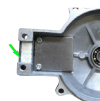
AMTH-K-2S-B14
Cam



AMTH-K-2S-B15
Connecting Lever



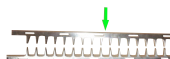
AMTH-K-2S-B16
Base Plate - Seating



AMTH-K-2S-B17
felt



AMTH-K-2S-B18
Blade-compression sheet



AMTH-K-2S-B19
Blade (upper)



AMTH-K-2S-B20
Blade (lower)



AMTH-K-2S-B21
Bottom plate(upper)



AMTH-K-2S-B22
Bottom plate(lower)



AMTH-K-2S-B23
BLADE ADJUSTMENT Bolt



AMTH K-2S-24
BLADE ADJUSTMENT Pad

SPARE PARTS DIAGRAM OF AMTH-PRO-K-2S - BLOWER



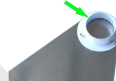
AMTH-K-2S-B25
Blade Adjustment Pad



AMTH-K-2S-B26
Bag hook(right)



AMTH-K-2S-B27
Side plate (right)



AMTH-K-2S-B28
Bracket of air supply duct



AMTH-K-2S-B29
Air supply duct



AMTH-K-2S-B30
Bag hook (middle)



AMTH-K-2S-B31
Fan guard (upper)



AMTH-K-2S-B32
Fan Seating



AMTH-K-2S-B33
Air Intake Filter



AMTH-K-2S-B34
Segment Bevel Gear 1



AMTH-K-2S-B35
Segment Bevel Gear 2



AMTH-K-2S-B36
Fan guard (lower)



AMTH-K-2S-B37
Rubber handle



AMTH-K-2S-B38
Frame cover



AMTH-K-2S-B39
Guide plate (right)



AMTH-K-2S-B40
Guide plate (left)



AMTH-K-2S-B41
Soft shaft assembly



AMTH-K-2S-B42
Engine seating



AMTH-K-2S-B43
wire lock



AMTH-K-2S-B44
Torsion spring



AMTH-K-2S-B45
Bearing 6001



AMTH-K-2S-B46
Bearing 6200

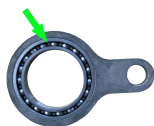


AMTH-K-2S-B47
Bearing 608



AMTH-K-2S-B48
Bearing 6000

SPARE PARTS DIAGRAM OF AMTH-PRO-K-2S - BLOWER



AMTH-K-2S-B49
Connecting Lever Bearing
6806



AMTH-K-2S-B50
Back-bearing unit



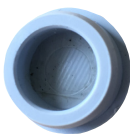
AMTH-K-2S-B51
Throttle lever



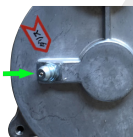
AMTH-K-2S-B52
Throttle wire



AMTH-K-2S-B53
Side plate (left)



AMTH-K-2S-B54
Frame beam end cover



AMTH-K-2S-B55
Grease nipple



AMTH-K-2S-B56
R Pad



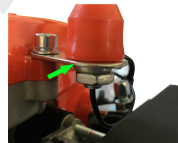
AMTH-K-2S-B57
Oil can



AMTH-K-2S-B58
Ratio Oil can



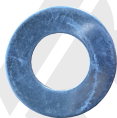
AMTH-K-2S-B59
tea collecting bag



AMTH-K-2S-B60
stop switch



AMTH-K-2S-B61
Clutch Drum Assy

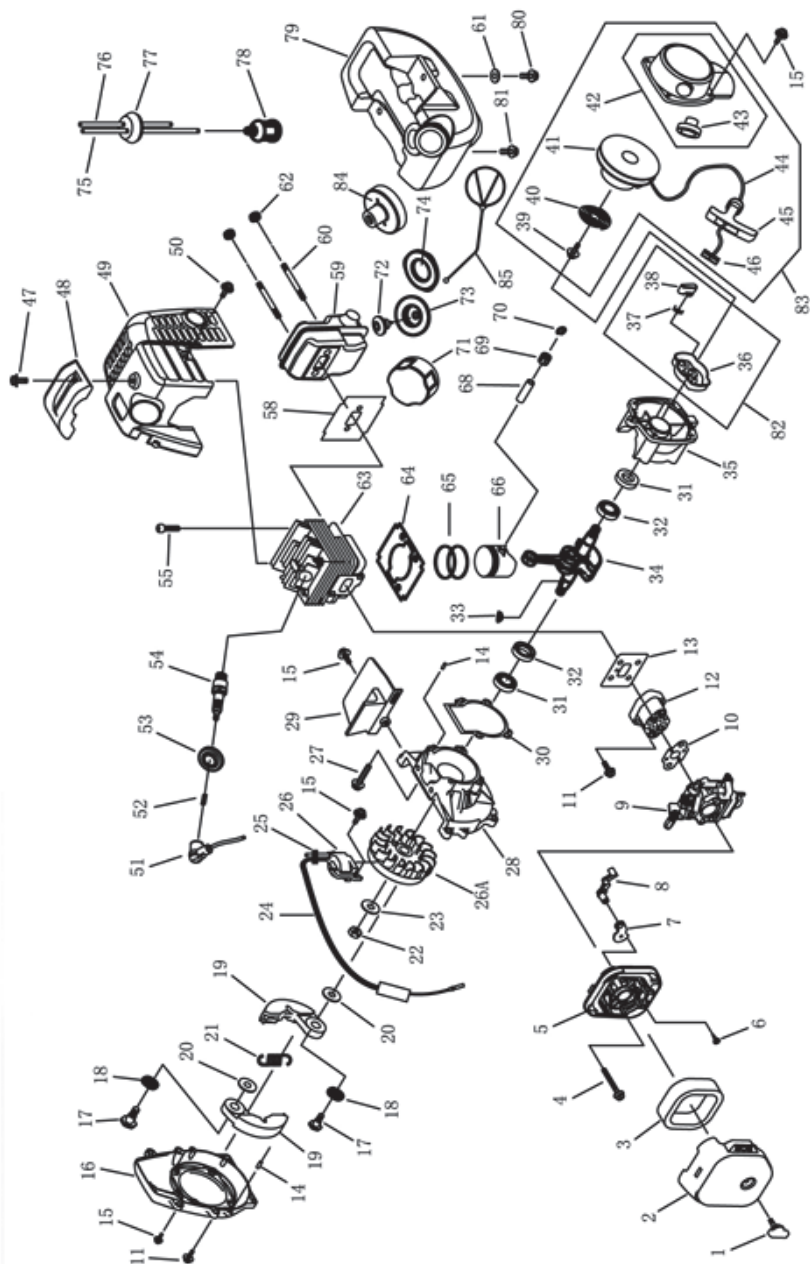


AMTH-K-2S-B62
fan pad



AMTH-K-2S-B63
R pad(long)

SPARE PARTS DIAGRAM OF AMTH-PRO-K-2S - ENGINE



SPARE PARTS LIST OF AMTH-PRO-K-2S - ENGINE

Part No.	Description
AMTH-K-2S-E 1	SCREW
AMTH-K-2S-E 2	CLEANER OUTSIDE COVER
AMTH-K-2S-E 3	CLEANER ELEMENT
AMTH-K-2S-E 4	SCREW M5×55
AMTH-K-2S-E 5	CLEANER INSIDE COVER
AMTH-K-2S-E 6	SCREW ST4.2×12-F-H
AMTH-K-2S-E 7	CHOKE
AMTH-K-2S-E 8	CHOKE HANDLE
AMTH-K-2S-E 9	CARBURETOR
AMTH-K-2S-E10	GASKET
AMTH-K-2S-E11	SCREW M5×20
AMTH-K-2S-E12	INLET MANIFOLD
AMTH-K-2S-E13	CYLINDER WASHER
AMTH-K-2S-E14	ANNUL B3×10
AMTH-K-2S-E15	SCREW M4×16
AMTH-K-2S-E16	FAN COVER
AMTH-K-2S-E17	CLUTCH STEP SCREW
AMTH-K-2S-E18	WASHER
AMTH-K-2S-E19	CLUTCH SHOE COMP.
AMTH-K-2S-E20	WASHER
AMTH-K-2S-E21	CLUTCH SPRING
AMTH-K-2S-E22	NUT M8×1
AMTH-K-2S-E23	WASHER 8
AMTH-K-2S-E24	STOP CORD COMP
AMTH-K-2S-E25	PRIMARY CORD GROMMET
AMTH-K-2S-E26	MAGNETO STATOR
AMTH-K-2S-E26A	MAGNETO ROTOR
AMTH-K-2S-E27	SCREW M5×25
AMTH-K-2S-E28	FRONT HALF CRANK CASE
AMTH-K-2S-E29	GUIDE PLATE
AMTH-K-2S-E30	CRANK CASE GASKET
AMTH-K-2S-E31	OIL SEAL
AMTH-K-2S-E32	BALL BEARING 6001/P5
AMTH-K-2S-E33	KEY
AMTH-K-2S-E34	CRANK SHAFT COMP.
AMTH-K-2S-E35	REAR HALF CRANK CASE
AMTH-K-2S-E36	STARTER PULLEY ASS'Y
AMTH-K-2S-E37	STARTER PAWL SPRING
AMTH-K-2S-E38	STARTER PAWL
AMTH-K-2S-E39	SCREW M5×10
AMTH-K-2S-E40	RECOIL SPRING
AMTH-K-2S-E41	STARTER ROPE REEL

Part No.	Description
AMTH-K-2S-E42	RECOIL STARTER BODY
AMTH-K-2S-E43	ROPE GUIDE
AMTH-K-2S-E44	ROPE
AMTH-K-2S-E45	STARTER HANDLE
AMTH-K-2S-E46	GASKET
AMTH-K-2S-E47	SCREW M5×14
AMTH-K-2S-E48	COVER
AMTH-K-2S-E49	COVER
AMTH-K-2S-E50	SCREW M4×12
AMTH-K-2S-E51	PLUG CAP
AMTH-K-2S-E52	CLICK SPRING
AMTH-K-2S-E53	PLUG COVER
AMTH-K-2S-E54	SPARK PLUG
AMTH-K-2S-E55	SCREW M5×18
AMTH-K-2S-E58	GASKET
AMTH-K-2S-E59	MUFFLER COMP.
AMTH-K-2S-E60	BOLT
AMTH-K-2S-E61	WASHER 5
AMTH-K-2S-E62	NUT M5
AMTH-K-2S-E63	CYLINDER
AMTH-K-2S-E64	CYLINDER WASHER
AMTH-K-2S-E65	PISTON RING
AMTH-K-2S-E66	PISTON
AMTH-K-2S-E68	PISTON PIN
AMTH-K-2S-E69	NEEDLE BEARING
AMTH-K-2S-E70	PISTON PIN CIRCLET
AMTH-K-2S-E71	FUEL TANK LID
AMTH-K-2S-E72	AIRINLET MOUTH
AMTH-K-2S-E73	FRAME
AMTH-K-2S-E74	GASKET
AMTH-K-2S-E75	INLET FUEL PIPE
AMTH-K-2S-E76	OUTLET FUEL PIPE
AMTH-K-2S-E77	PRIMARY CORD GROMMET
AMTH-K-2S-E78	CLEANER
AMTH-K-2S-E79	FUEL TANK
AMTH-K-2S-E80	SCREW M5×16
AMTH-K-2S-E81	SCREW M5×16
AMTH-K-2S-E82	STARTER PULLEY ASS'Y
AMTH-K-2S-E83	STARTER
AMTH-K-2S-E84	CAP
AMTH-K-2S-E85	STOP RING

INSPECTION & MAINTENANCE

For safety use, make sure the machine is cleaned every three-months. Before working, make sure to inspect the filter and the nozzle, and ensure there is no impurity. After working, make sure there is no water in the pump and the hose.

If the machine needs to be repaired in the guarantee period, please return the machine to the shop. You need to provide the certificate of purchase in order to repair or get the substitute.

Before Packing, the machine should be cleaned, then use closed packaging, packaging should be firm. Store the machine in dry place.

For transportation safety. The machine should comply with ISTA.



Meaning of crossed - out wheeled dustbin:

Do not dispose of electrical machines as unsorted municipal waste, use separate collection facilities.

If electrical machines are disposed of in landfills or dumps, hazardous substances can leak into the groundwater and get into the food chain, damaging your health and well-being.

When replacing old machines with new ones, the retailer is legally obligated to take back your old machine for disposals at least free of charge.

Warranty Card

CUSTOMER COPY



Purchaser's Name & Address

Date of Delivery

Product Name

AMTH-PRO-K-2S Agrimate Kawasaki Tea leaf Harvester

Dealer's Office Seal

Product Serial No.

Dealer Sign _____

Customer Sign. _____

Invoice / DN No.

I/We accept the terms and conditions of Warranty as in the Warranty Card.

Warranty Card

DEALER'S COPY



Purchaser's Name & Address

Date of Delivery

Product Name

AMTH-PRO-K-2S Agrimate Kawasaki Tea leaf Harvester

Dealer's Office Seal

Product Serial No.

Dealer Sign _____

Customer Sign. _____

Invoice / DN No.

I/We accept the terms and conditions of Warranty as in the Warranty Card.

Warranty Card

COMPANY COPY



Purchaser's Name & Address

Date of Delivery

Product Name

AMTH-PRO-K-2S Agrimate Kawasaki Tea leaf Harvester

Dealer's Office Seal

Product Serial No.

Dealer Sign _____

Customer Sign. _____

Invoice / DN No.

I/We accept the terms and conditions of Warranty as in the Warranty Card.

1. **LIMITED WARRANTY PERIOD** : For a period of six months from the date of Sale / delivery of the product which ever is earlier. 2. **LIMITED WARRANTY OBLIGATION** : Replacement of defective part(s) by authorized dealer are free of charges. If found defective by reasons of defective material / poor workmanship, parts will be replaced and there will be no value re-imbursalment. 3. **TERMS & CONDITIONS** : a. Claims under warranty will be accepted on submission of Warranty Card duly filled and stamped by authorized dealer together with the original purchase document . : b. Shipping / transportation / Incidental charges incurred in replacing defective parts under warranty shall be borne by the purchaser.

WARRANTY null & void if

- (i) Lack of maintenance, (ii) Incorrect use of the machine or tampering, (iii) Use of non-genuine spare parts, (iv) Usage of acids, solvents, or any flammable materials, (v) Non-usage of filter water / clear water / soft water & using water above 40°C temperature, (vi) While using the pressure washers to draw water which is contaminated with dust & solvents (eg. paint thinners, gasoline, oil, etc.), (vii) Repair done by unauthorized service people, (viii) Those parts subject to wear & tear due to normal operations and plastic parts, rubber items etc, (ix) Loose connections, faulty electrical fixtures & fluctuations in power supply.
4. Should any failure occur during or after the warranty period, customer does not have the right to interrupt payment / price discount.
5. Incidental or consequential damages like inconvenience commercial loss, loss of tie, mental agony etc.
6. Loss of any nature due to operation or non-operation is not covered under warranty.
7. All free service are at Dealer's service point only.
8. Warranty ceases if service is not done periodically.
9. The attached card should be completed and returned to Ratnagiri Impex Pvt. Ltd. for registration immediately after sale / delivery.
10. The warranty is void unless you register the warranty card with Ratnagiri Impex Pvt. Ltd.
11. The decision of Ratnagiri Impex Pvt. Ltd., in settling the warranty is final in all respects.
12. All disputes are subject to Bangalore Courts Jurisdiction

1. **LIMITED WARRANTY PERIOD** : For a period of six months from the date of Sale / delivery of the product which ever is earlier. 2. **LIMITED WARRANTY OBLIGATION** : Replacement of defective part(s) by authorized dealer are free of charges. If found defective by reasons of defective material / poor workmanship, parts will be replaced and there will be no value re-imbursalment. 3. **TERMS & CONDITIONS** : a. Claims under warranty will be accepted on submission of Warranty Card duly filled and stamped by authorized dealer together with the original purchase document . : b. Shipping / transportation / Incidental charges incurred in replacing defective parts under warranty shall be borne by the purchaser.

WARRANTY null & void if

- (i) Lack of maintenance, (ii) Incorrect use of the machine or tampering, (iii) Use of non-genuine spare parts, (iv) Usage of acids, solvents, or any flammable materials, (v) Non-usage of filter water / clear water / soft water & using water above 40°C temperature, (vi) While using the pressure washers to draw water which is contaminated with dust & solvents (eg. paint thinners, gasoline, oil, etc.), (vii) Repair done by unauthorized service people, (viii) Those parts subject to wear & tear due to normal operations and plastic parts, rubber items etc, (ix) Loose connections, faulty electrical fixtures & fluctuations in power supply.
4. Should any failure occur during or after the warranty period, customer does not have the right to interrupt payment / price discount.
5. Incidental or consequential damages like inconvenience commercial loss, loss of tie, mental agony etc.
6. Loss of any nature due to operation or non-operation is not covered under warranty.
7. All free service are at Dealer's service point only.
8. Warranty ceases if service is not done periodically.
9. The attached card should be completed and returned to Ratnagiri Impex Pvt. Ltd. for registration immediately after sale / delivery.
10. The warranty is void unless you register the warranty card with Ratnagiri Impex Pvt. Ltd.
11. The decision of Ratnagiri Impex Pvt. Ltd., in settling the warranty is final in all respects.
12. All disputes are subject to Bangalore Courts Jurisdiction

1. **LIMITED WARRANTY PERIOD** : For a period of six months from the date of Sale / delivery of the product which ever is earlier. 2. **LIMITED WARRANTY OBLIGATION** : Replacement of defective part(s) by authorized dealer are free of charges. If found defective by reasons of defective material / poor workmanship, parts will be replaced and there will be no value re-imbursalment. 3. **TERMS & CONDITIONS** : a. Claims under warranty will be accepted on submission of Warranty Card duly filled and stamped by authorized dealer together with the original purchase document . : b. Shipping / transportation / Incidental charges incurred in replacing defective parts under warranty shall be borne by the purchaser.

WARRANTY null & void if

- (i) Lack of maintenance, (ii) Incorrect use of the machine or tampering, (iii) Use of non-genuine spare parts, (iv) Usage of acids, solvents, or any flammable materials, (v) Non-usage of filter water / clear water / soft water & using water above 40°C temperature, (vi) While using the pressure washers to draw water which is contaminated with dust & solvents (eg. paint thinners, gasoline, oil, etc.), (vii) Repair done by unauthorized service people, (viii) Those parts subject to wear & tear due to normal operations and plastic parts, rubber items etc, (ix) Loose connections, faulty electrical fixtures & fluctuations in power supply.
4. Should any failure occur during or after the warranty period, customer does not have the right to interrupt payment / price discount.
5. Incidental or consequential damages like inconvenience commercial loss, loss of tie, mental agony etc.
6. Loss of any nature due to operation or non-operation is not covered under warranty.
7. All free service are at Dealer's service point only.
8. Warranty ceases if service is not done periodically.
9. The attached card should be completed and returned to Ratnagiri Impex Pvt. Ltd. for registration immediately after sale / delivery.
10. The warranty is void unless you register the warranty card with Ratnagiri Impex Pvt. Ltd.
11. The decision of Ratnagiri Impex Pvt. Ltd., in settling the warranty is final in all respects.
12. All disputes are subject to Bangalore Courts Jurisdiction



**ratnagiri
impex**
BRINGING THE BEST TO YOU

1st Free Service Coupon

ISO 9001:2008
CERTIFIED COMPANY

FREE SERVICE COUPON (30 Days / 20 hrs (Which ever is earlier))

Model

AMTH-PRO-K-2S Agrimate Kawasaki Tea leaf Harvester

PDI Date

Service No.

Purchase bill no.

Date

Dealer's Office Seal & Signature

[Signature area]

Serial Number

[Serial Number box]

Operations:

- Check and Test the Fuel Mixture.
- Check and Clean the Air Filter
- Check, Clean and Adjust the Spark plug
- Check and Adjust the Carburetor Tuning
- Check and Sharpen the cutting Tools
- Start and Check the Noise, Vibration, Loosen / Fasteners etc.
- Product familiarization on Usage
- Routine maintenance and Storage

Customer Signature.....

Conditions: Operations listed have been performed to my entire satisfaction without any labour charges. Only consumables were charged.



agriculture | horticulture | sericulture | plantations | forestry | garden | health care

WARRANTY AND FREE SERVICE COUPON



**ratnagiri
impex**
BRINGING THE BEST TO YOU

2nd Free Service Coupon

ISO 9001:2008
CERTIFIED COMPANY

FREE SERVICE COUPON (30 Days / 20 hrs (Which ever is earlier))

Model

AMTH-PRO-K-2S Agrimate Kawasaki Tea leaf Harvester

PDI Date

Service No.

Purchase bill no.

Date

Dealer's Office Seal & Signature

[Signature area]

Serial Number

[Serial Number box]

Operations:

- Check and Test the Fuel Mixture.
- Check and Clean the Air Filter
- Check, Clean and Adjust the Spark plug
- Check and Adjust the Carburetor Tuning
- Check and Sharpen the cutting Tools
- Start and Check the Noise, Vibration, Loosen / Fasteners etc.
- Product familiarization on Usage
- Routine maintenance and Storage

Customer Signature.....

Conditions: Operations listed have been performed to my entire satisfaction without any labour charges. Only consumables were charged.



agriculture | horticulture | sericulture | plantations | forestry | garden | health care

WARRANTY AND FREE SERVICE COUPON



**ratnagiri
impex**
BRINGING THE BEST TO YOU

3rd Free Service Coupon

ISO 9001:2008
CERTIFIED COMPANY

FREE SERVICE COUPON (30 Days / 20 hrs (Which ever is earlier))

Model

AMTH-PRO-K-2S Agrimate Kawasaki Tea leaf Harvester

PDI Date

Service No.

Purchase bill no.

Date

Dealer's Office Seal & Signature

[Signature area]

Serial Number

[Serial Number box]

Operations:

- Check and Test the Fuel Mixture.
- Check and Clean the Air Filter
- Check, Clean and Adjust the Spark plug
- Check and Adjust the Carburetor Tuning
- Check and Sharpen the cutting Tools
- Start and Check the Noise, Vibration, Loosen / Fasteners etc.
- Product familiarization on Usage
- Routine maintenance and Storage

Customer Signature.....

Conditions: Operations listed have been performed to my entire satisfaction without any labour charges. Only consumables were charged.



agriculture | horticulture | sericulture | plantations | forestry | garden | health care

WARRANTY AND FREE SERVICE COUPON



Small Maintenance. Big Savings.



Small Maintenance. Big Savings.



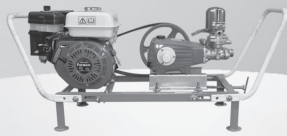
Small Maintenance. Big Savings.

Do's & Don'ts

- Always read the instruction manual supplied along with the equipments and understand the correct installation and operating procedures before attempting to use the equipments.
- It is important to use the personal protection equipments such as head helmet with visor, ear defenders, goggles, safety gloves, cut resistant shoes, trousers and jackets while operating potentially dangerous machines.
- Avoid untrained persons using the equipments. Children must not be allowed to handle these equipments.
- Always use genuine spares and accessories in repairs and usage to derive maximum life of the equipments.
- Always keep the equipments in good working condition to minimize loss of output as well as to reduce the pollution and save the environment.
- Do not use the machine within range of persons unless they wear protective clothing.
- Do not operate the machine when fatigued or under the influence of alcohol or drugs.
- When the machine is running, please maintain a constant water supply. Without water circulation will damage the sealing rings of the machine.
- For more query kindly contact for our Service Center/Dealer/ franchise

Agrimate Army For Pest Control

ANY WHERE - ANY TIME - ANY CROP




AGRIMATE[®]
Maximum Power - Super Economy

RATNAGIRI IMPEX PVT., LTD.,
Annapurna House, #1/1G, 7th Cross, New Guddadahalli
Mysore Road, Bangalore - 560 026
Customer Care: 1800-425-3036
Email: info@ratnagiriimpex.com



Marketed by:
ratnagiri[®]
impex
BRINGING YOU THE FUTURE... NOW

www.ratnagiriimpex.com

AN ISO 9001:2008 CERTIFIED COMPANY