

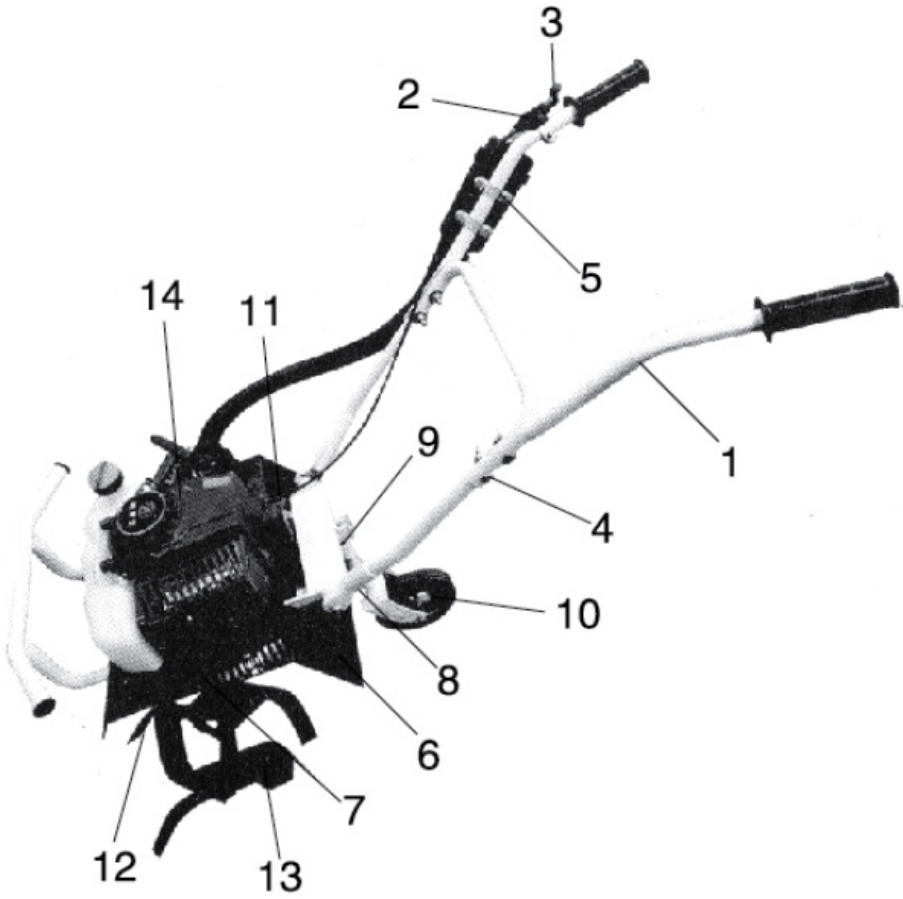
AGRIMATE MINI POWER WEEDER APW-63-MPG-PRO



TECHNICAL SPECIFICATIONS

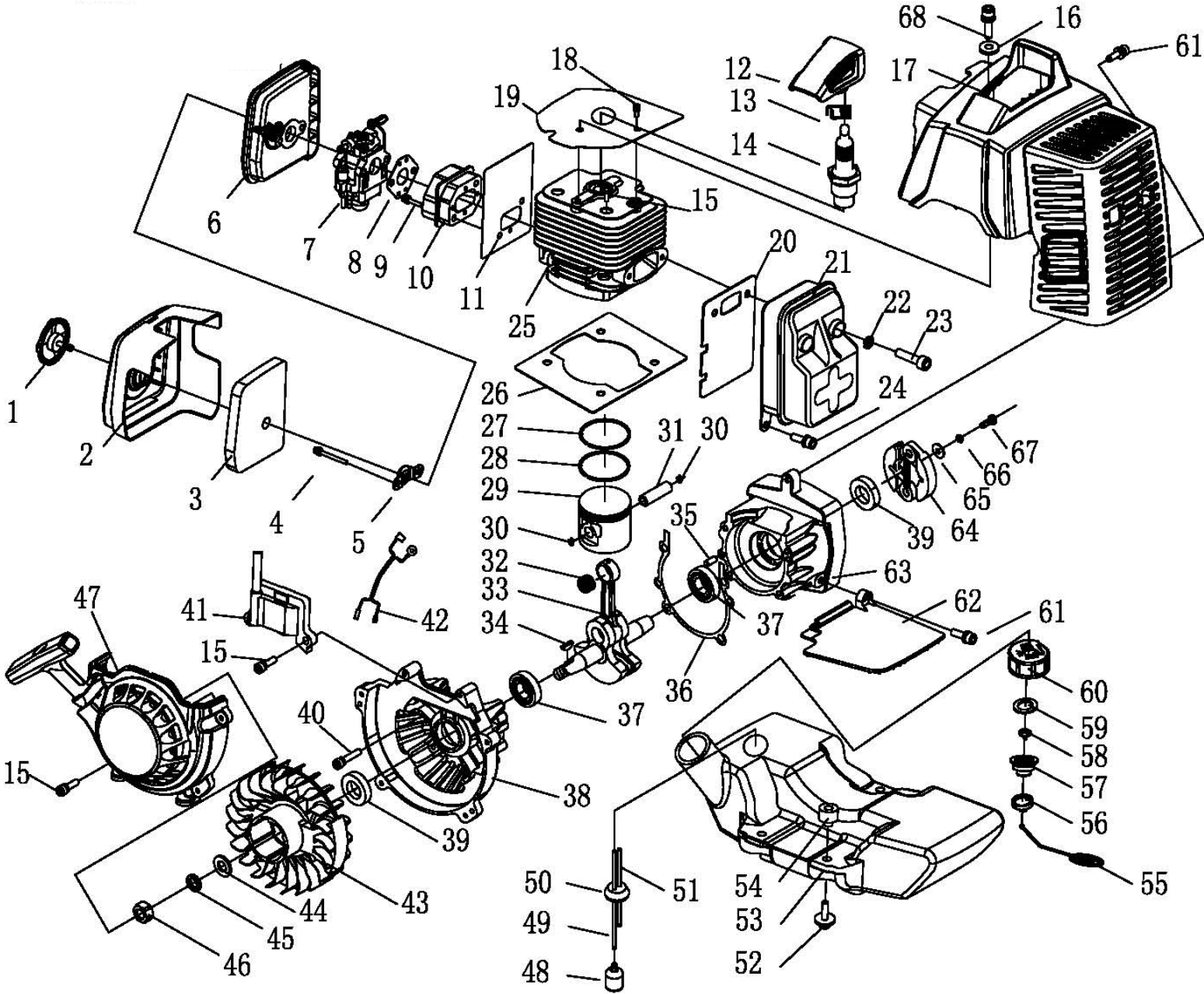
MODEL	APW-63-MPG-PRO
ENGINE	SINGLE CYLINDER -2S
DISPLACEMENT	63CC
POWER	3HP
WEEDING WIDTH	43cm
WEEDING DEPTH	20-25CM

STRUCTURE



1	HANDLE
2	SWITCH KEY
3	THROTTLE LEVER
4	HANDLE BRACKET
5	CLIP
6	SHIELD
7	WHEEL BRACKET
8	DEPTH ADJUST PLATE
9	DEPTH ADJUST PLATE BRACKET
10	WHEEL
11	SUPPORT BAT
12	WORM ASSEMBLY
13	BLADE ASSEMBLY
14	ENGINE

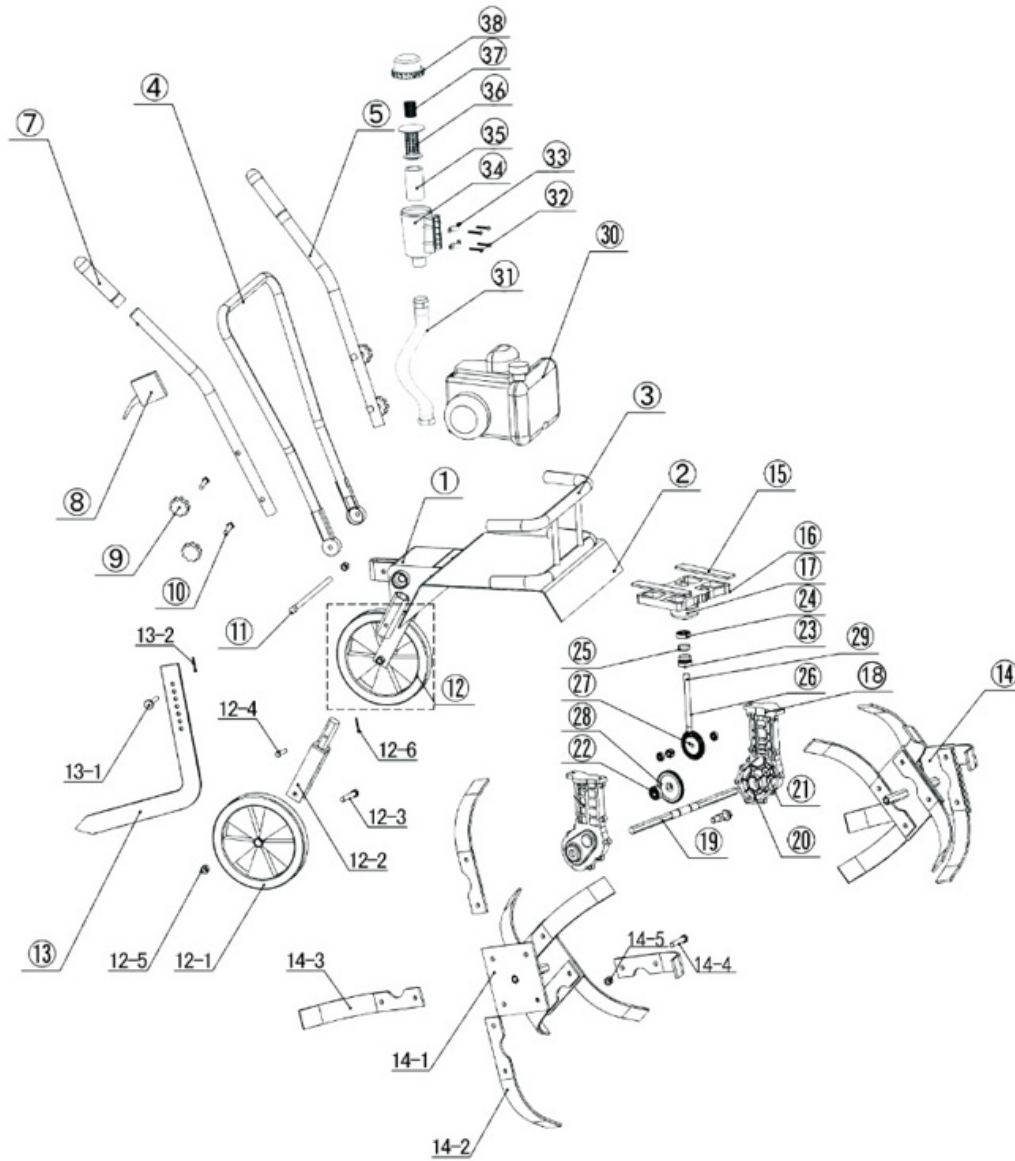
ENGINE DIAGRAM & PART LIST



SL NO	PART NO	DESCRIPTION	SL NO	PART NO	DESCRIPTION
1	APW-MPG-E01	SCREW	17	APW-MPG-E17	GUIDE COVER ASS'Y
2	APW-MPG-E02	CLEANER OUTSIDE COVER	18	APW-MPG-E18	SCREW
3	APW-MPG-E03	FILTER NET	19	APW-MPG-E19	CLAPBOARD
4	APW-MPG-E04	SCREW	20	APW-MPG-E20	GASKET
5	APW-MPG-E05	BAFFLE	21	APW-MPG-E21	MUFFLER
6	APW-MPG-E06	CLEANER INSIDE COVER	22	APW-MPG-E22	WASHER
7	APW-MPG-E07	CARBURETOR	23	APW-MPG-E23	SCREW
8	APW-MPG-E08	GASKET	24	APW-MPG-E24	SCREW
9	APW-MPG-E09	SCREW	25	APW-MPG-E25	CYLINDER
10	APW-MPG-E10	ADMITTING PIPE	26	APW-MPG-E26	GASKET
11	APW-MPG-E11	GASKET	27	APW-MPG-E27	PISTON RING
12	APW-MPG-E12	CAP	28	APW-MPG-E28	PISTON RING
13	APW-MPG-E13	SPRING	29	APW-MPG-E29	PISTON
14	APW-MPG-E14	PLUG	30	APW-MPG-E30	RING
15	APW-MPG-E15	SCREW	31	APW-MPG-E31	PISTON PIN
16	APW-MPG-E16	GASKET	32	APW-MPG-E32	BEARING

SL NO	PART NO	DESCRIPTION	SL NO	PART NO	DESCRIPTION
33	APW-MPG-E33	CRANK SHAFT ASS'Y	52	APW-MPG-E52	SCREW
34	APW-MPG-E34	KEY	53	APW-MPG-E53	FUEL TANK
35	APW-MPG-E35	PIN	54	APW-MPG-E54	GASKET
36	APW-MPG-E36	GASKET	55	APW-MPG-E55	CHAIN
37	APW-MPG-E37	BEARING	56	APW-MPG-E56	COVER
38	APW-MPG-E38	CRANK CASE	57	APW-MPG-E57	INSIDE COVER
39	APW-MPG-E39	SEAL	58	APW-MPG-E58	INLET
40	APW-MPG-E40	SCREW	59	APW-MPG-E59	GASKET
41	APW-MPG-E41	COIL	60	APW-MPG-E60	FUEL TANK LID
42	APW-MPG-E42	CORD COMP.	61	APW-MPG-E61	SCREW
43	APW-MPG-E43	FLY WHEEL	62	APW-MPG-E62	CLAPBOARD
44	APW-MPG-E44	WASHER	63	APW-MPG-E63	CRANK CASE
45	APW-MPG-E45	WASHER	64	APW-MPG-E64	CLUTCH
46	APW-MPG-E46	NUT	65	APW-MPG-E65	WASHER
47	APW-MPG-E47	STARTER	66	APW-MPG-E66	WASHER
48	APW-MPG-E48	FILTER	67	APW-MPG-E67	BOLT
49	APW-MPG-E49	FUEL PIPE	68	APW-MPG-E68	SCREW
50	APW-MPG-E50	PLUG	69	APW-MPG-E69	BOLT
51	APW-MPG-E51	FUEL PIPE	70	APW-MPG-E70	SCREW

TRANSMISSION DIAGRAM








SL NO.	PART NO.	DESCRIPTION	SL NO.	PART NO.	DESCRIPTION
1	APW-MPG-PRO-T01	Rack Assy	13	APW-MPG-PRO-T13	Drag Strut
2	APW-MPG-PRO-T02	Mudguard	13.1	APW-MPG-PRO-T13.1	Catch Pin
3	APW-MPG-PRO-T03	Protection Bracket	13.2	APW-MPG-PRO-T13.2	R Shaped Pin
4	APW-MPG-PRO-T04	Middle handle	14	APW-MPG-PRO-T14	Cutter Assy
5	APW-MPG-PRO-T05	Handle	14.1	APW-MPG-PRO-T14.1	Cutter bracket
6	APW-MPG-PRO-T06	NA	14.2	APW-MPG-PRO-T14.2	Blade
7	APW-MPG-PRO-T07	Rubber handle sleeve	14.3	APW-MPG-PRO-T14.3	Blade
8	APW-MPG-PRO-T08	Accelator Switch	14.4	APW-MPG-PRO-T14.4	Screw
9	APW-MPG-PRO-T09	Plastic Nut	14.5	APW-MPG-PRO-T14.5	Cap nut
10	APW-MPG-PRO-T10	Flat Head Screw	15	APW-MPG-PRO-T15	Rubber Cyshion
11	APW-MPG-PRO-T11	Long Screw	16	APW-MPG-PRO-T16	Aluminium Connector
12	APW-MPG-PRO-T12	Rear Wheel Unit	17	APW-MPG-PRO-T17	Clutch Drum
12.1	APW-MPG-PRO-T12.1	Wheel	18	APW-MPG-PRO-T18	Gear box Casing
12.2	APW-MPG-PRO-T12.2	Wheel Bracket	19	APW-MPG-PRO-T19	Cutter Shaft
12.3	APW-MPG-PRO-T12.3	Screw	20	APW-MPG-PRO-T20	Body Oil Seal
12.4	APW-MPG-PRO-T12.4	Catch Pin	21	APW-MPG-PRO-T21	Body Bearung
12.5	APW-MPG-PRO-T12.5	Cap nut	22	APW-MPG-PRO-T22	Cutter shaft bearing
12.6	APW-MPG-NEO-T12.6	R Shaped Pin			

SL NO.	PART NO.	DESCRIPTION	SL NO.	PART NO.	DESCRIPTION
23	APW-MPG-PRO-T23	Bearing	32	APW-MPG-PRO-T32	Bolt
24	APW-MPG-PRO-T24	Bearing	33	APW-MPG-PRO-T33	Fixed Bracket
25	APW-MPG-PRO-T25	Oil seal	34	APW-MPG-PRO-T34	Filter Housing
26	APW-MPG-PRO-T26	Worm	35	APW-MPG-PRO-T35	Sponge Filter Element
27	APW-MPG-PRO-T27	sector gear	36	APW-MPG-PRO-T36	Filter Housing Bracket
28	APW-MPG-PRO-T28	Secondary Gear	37	APW-MPG-PRO-T37	Spring
29	APW-MPG-PRO-T29	Outer Clamp Ring	38	APW-MPG-PRO-T38	Filter Housing
30	APW-MPG-PRO-T30	Gasoline Engine			
31	APW-MPG-PRO-T31	Filter Tube			






WARRANTY CARD

CUSTOMER COPY

DATE _____	DATE OF DELIVERY _____	DEALERS OFFICIAL SEAL	DEALERS SIGN _____
PURCHASERS NAME & ADDRESS _____ _____	 CUSTOMER SIGN		
PRODUCT NAME	PRODUCT SERIAL NO.	INVOICE/DN NO.	
			






I/Will accept the terms and conditions of warranty as in the warranty card

DEALERS COPY

DATE _____	DATE OF DELIVERY _____	DEALERS OFFICIAL SEAL	DEALERS SIGN _____
PURCHASERS NAME & ADDRESS _____ _____	 CUSTOMER SIGN		
PRODUCT NAME	PRODUCT SERIAL NO.	INVOICE/DN NO.	
			

I/Will accept the terms and conditions of warranty as in the warranty card

COMPANY COPY

DATE _____	DATE OF DELIVERY _____	DEALERS OFFICIAL SEAL	DEALERS SIGN _____
PURCHASERS NAME & ADDRESS _____ _____	 CUSTOMER SIGN		
PRODUCT NAME	PRODUCT SERIAL NO.	INVOICE/DN NO.	
			

I/Will accept the terms and conditions of warranty as in the warranty card

1. LIMITED WARRANTY PERIOD : For a period of six months from the date of Sale / delivery of the product which ever is earlier. 2. LIMITED WARRANTY OBLIGATION : Replacement of defective part(s) by authorized dealer are free of charges. If found defective by reasons of defective material / poor workmanship, parts will be replaced and there will be no value re-imburement. 3. TERMS & CONDITIONS : a. Claims under warranty will be accepted on submission of Warranty Card duly filled and stamped by authorized dealer together with the original purchase document. : b. Shipping / transportation / Incidental charges incurred in replacing defective parts under warranty shall be borne by the purchaser

WARRANTY null & void if

- (i) Lack of maintenance, (ii) Incorrect use of the machine or tampering, (iii) Use of non-genuine spare parts, (iv) Usage of acids, solvents, or any flammable materials, (v) Non-usage of filter water / clear water / soft water & using water above 40°C temperature, (vi) While using the pressure washers to draw water which is contaminated with dust & solvents (eg. paint thinners, gasoline, oil, etc.), (vii) Repair done by unauthorized service people, (viii) Those parts subject to wear & tear due to normal operations and plastic parts, rubber items etc, (ix) Loose connections, faulty electrical fixtures & fluctuations in power supply.
- 4. Should any failure occur during or after the warranty period, customer does not have the right to interrupt payment / price discount.
- 5. Incidental or consequential damages like inconvenience commercial loss, loss of tie, mental agony etc.
- 6. Loss of any nature due to operation or non-operation is not covered under warranty.
- 7. All free service are at Dealer's service point only.
- 8. Warranty ceases if service is not done periodically.
- 9. The attached card should be completed and returned to Ratnagiri Impex Pvt. Ltd. for registration immediately after sale / delivery.
- 10. The warranty is void unless you register the warranty card with Ratnagiri Impex Pvt. Ltd.
- 11. The decision of Ratnagiri Impex Pvt. Ltd., in settling the warranty is final in all respects.
- 12. All disputes are subject to Bangalore Courts Jurisdiction

1. LIMITED WARRANTY PERIOD : For a period of six months from the date of Sale / delivery of the product which ever is earlier. 2. LIMITED WARRANTY OBLIGATION : Replacement of defective part(s) by authorized dealer are free of charges. If found defective by reasons of defective material / poor workmanship, parts will be replaced and there will be no value re-imburement. 3. TERMS & CONDITIONS : a. Claims under warranty will be accepted on submission of Warranty Card duly filled and stamped by authorized dealer together with the original purchase document. : b. Shipping / transportation / Incidental charges incurred in replacing defective parts under warranty shall be borne by the purchaser.

WARRANTY null & void if

- (i) Lack of maintenance, (ii) Incorrect use of the machine or tampering, (iii) Use of non-genuine spare parts, (iv) Usage of acids, solvents, or any flammable materials, (v) Non-usage of filter water / clear water / soft water & using water above 40°C temperature, (vi) While using the pressure washers to draw water which is contaminated with dust & solvents (eg. paint thinners, gasoline, oil, etc.), (vii) Repair done by unauthorized service people, (viii) Those parts subject to wear & tear due to normal operations and plastic parts, rubber items etc, (ix) Loose connections, faulty electrical fixtures & fluctuations in power supply.
- 4. Should any failure occur during or after the warranty period, customer does not have the right to interrupt payment / price discount.
- 5. Incidental or consequential damages like inconvenience commercial loss, loss of tie, mental agony etc.
- 6. Loss of any nature due to operation or non-operation is not covered under warranty.
- 7. All free service are at Dealer's service point only.
- 8. Warranty ceases if service is not done periodically.
- 9. The attached card should be completed and returned to Ratnagiri Impex Pvt. Ltd. for registration immediately after sale / delivery.
- 10. The warranty is void unless you register the warranty card with Ratnagiri Impex Pvt. Ltd.
- 11. The decision of Ratnagiri Impex Pvt. Ltd., in settling the warranty is final in all respects.
- 12. All disputes are subject to Bangalore Courts Jurisdiction

1. LIMITED WARRANTY PERIOD : For a period of six months from the date of Sale / delivery of the product which ever is earlier. 2. LIMITED WARRANTY OBLIGATION : Replacement of defective part(s) by authorized dealer are free of charges. If found defective by reasons of defective material / poor workmanship, parts will be replaced and there will be no value re-imburement. 3. TERMS & CONDITIONS : a. Claims under warranty will be accepted on submission of Warranty Card duly filled and stamped by authorized dealer together with the original purchase document. : b. Shipping / transportation / Incidental charges incurred in replacing defective parts under warranty shall be borne by the purchaser.

WARRANTY null & void if

- (i) Lack of maintenance, (ii) Incorrect use of the machine or tampering, (iii) Use of non-genuine spare parts, (iv) Usage of acids, solvents, or any flammable materials, (v) Non-usage of filter water / clear water / soft water & using water above 40°C temperature, (vi) While using the pressure washers to draw water which is contaminated with dust & solvents (eg. paint thinners, gasoline, oil, etc.), (vii) Repair done by unauthorized service people, (viii) Those parts subject to wear & tear due to normal operations and plastic parts, rubber items etc, (ix) Loose connections, faulty electrical fixtures & fluctuations in power supply.
- 4. Should any failure occur during or after the warranty period, customer does not have the right to interrupt payment / price discount.
- 5. Incidental or consequential damages like inconvenience commercial loss, loss of tie, mental agony etc.
- 6. Loss of any nature due to operation or non-operation is not covered under warranty.
- 7. All free service are at Dealer's service point only.
- 8. Warranty ceases if service is not done periodically.
- 9. The attached card should be completed and returned to Ratnagiri Impex Pvt. Ltd. for registration immediately after sale / delivery.
- 10. The warranty is void unless you register the warranty card with Ratnagiri Impex Pvt. Ltd.
- 11. The decision of Ratnagiri Impex Pvt. Ltd., in settling the warranty is final in all respects.
- 12. All disputes are subject to Bangalore Courts Jurisdiction



FREE SERVICE COUPON (30DAYS/30HRS. WHICHEVER IS EARLIER)

MODEL	<input type="text"/>	SERIAL NUMBER	<input type="text"/>
PDI DATE	SERVICE NO.	PURCHASE BILL NO.	DATE
<input type="text"/>	<input type="text"/>	<input type="text"/>	<input type="text"/>
DEALERS OFFICE SEAL	OPERATIONS		
<input type="text"/>	<ol style="list-style-type: none"> 1. Check and test the fuel mixture 3. Check , clean and adjust the spark plug 5. Check and sparken the cutting tools 7. Start and check the noise, vibration, loosen etc.. 	<ol style="list-style-type: none"> 2. check and clean the air filter 4. Check and adjust the carburetor tuning 6. Product familirisation on usage 8. Routine maintenance and shortage. 	

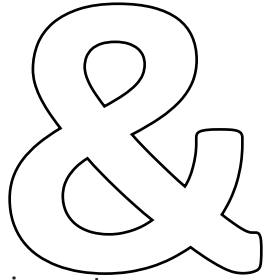
FREE SERVICE COUPON (30DAYS/30HRS. WHICHEVER IS EARLIER)

MODEL	<input type="text"/>	SERIAL NUMBER	<input type="text"/>
PDI DATE	SERVICE NO.	PURCHASE BILL NO.	DATE
<input type="text"/>	<input type="text"/>	<input type="text"/>	<input type="text"/>
DEALERS OFFICE SEAL	OPERATIONS		
<input type="text"/>	<ol style="list-style-type: none"> 1. Check and test the fuel mixture 3. Check , clean and adjust the spark plug 5. Check and sparken the cutting tools 7. Start and check the noise, vibration, loosen etc.. 	<ol style="list-style-type: none"> 2. check and clean the air filter 4. Check and adjust the carburetor tuning 6. Product familirisation on usage 8. Routine maintenance and shortage. 	

FREE SERVICE COUPON (30DAYS/30HRS. WHICHEVER IS EARLIER)

MODEL	<input type="text"/>	SERIAL NUMBER	<input type="text"/>
PDI DATE	SERVICE NO.	PURCHASE BILL NO.	DATE
<input type="text"/>	<input type="text"/>	<input type="text"/>	<input type="text"/>
DEALERS OFFICE SEAL	OPERATIONS		
<input type="text"/>	<ol style="list-style-type: none"> 1. Check and test the fuel mixture 3. Check , clean and adjust the spark plug 5. Check and sparken the cutting tools 7. Start and check the noise, vibration, loosen etc.. 	<ol style="list-style-type: none"> 2. check and clean the air filter 4. Check and adjust the carburetor tuning 6. Product familirisation on usage 8. Routine maintenance and shortage. 	

DOS



DONT'S

attempting to use the equipments.

1. Always read the instruction manual supplied along with the equipments and understand the correct installation and operating procedures before

trousers and jackets while operating potentially dangerous machines
2. It is important to use the personal protection equipments such as head helmet with visor, ear defenders, goggles, safety gloves, cut resistant shoes,
3. Avoid untrained persons using the equipments. Children must not be allowed to handle these equipments
4. Always use genuine spares and accessories in repairs and usage to derive maximum life of the equipments.
5. Always keep the equipments in good working condition to minimize loss of output as well as to reduce the pollution and save the environment
6. Do not use the machine within range of persons unless they wear protective clothing
7. Do not operate the machine when fatigued or under the influence of alcohol or drugs
8. For more query kindly contact for our Service Center/Dealer/ franchise

NO. 1 CHOICE OF FARMERS SINCE 1999



Marketed by.
**ratnagiri
impex**
BRINGING YOU THE FUTURE... NOW

RATNAGIRI IMPEX PVT., LTD.,

Annapurna House, #1 / 1G, 7th Cross, New
Guddadahalli

Mysore Road, Bangalore - 560 026

Missed Call : 7393 938 938

Email: ask@agrimart.in