

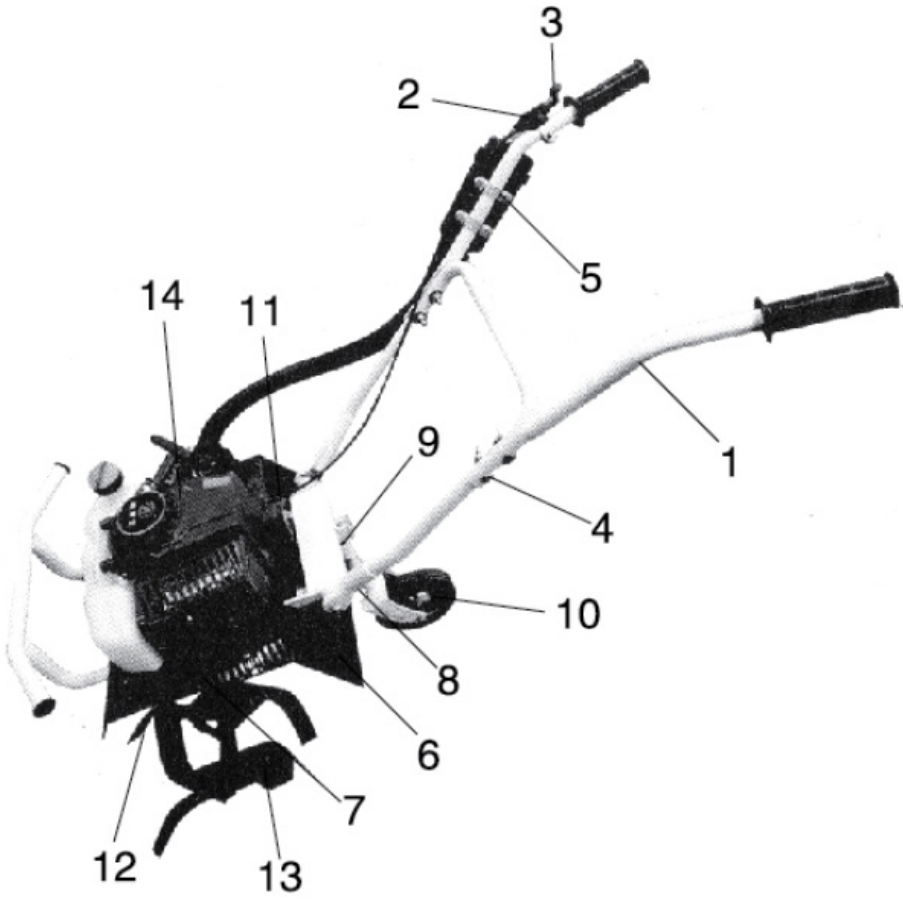
## AGRIMATE MINI POWER WEEDER APW-63-MPJ-Mini



## TECHNICAL SPECIFICATIONS

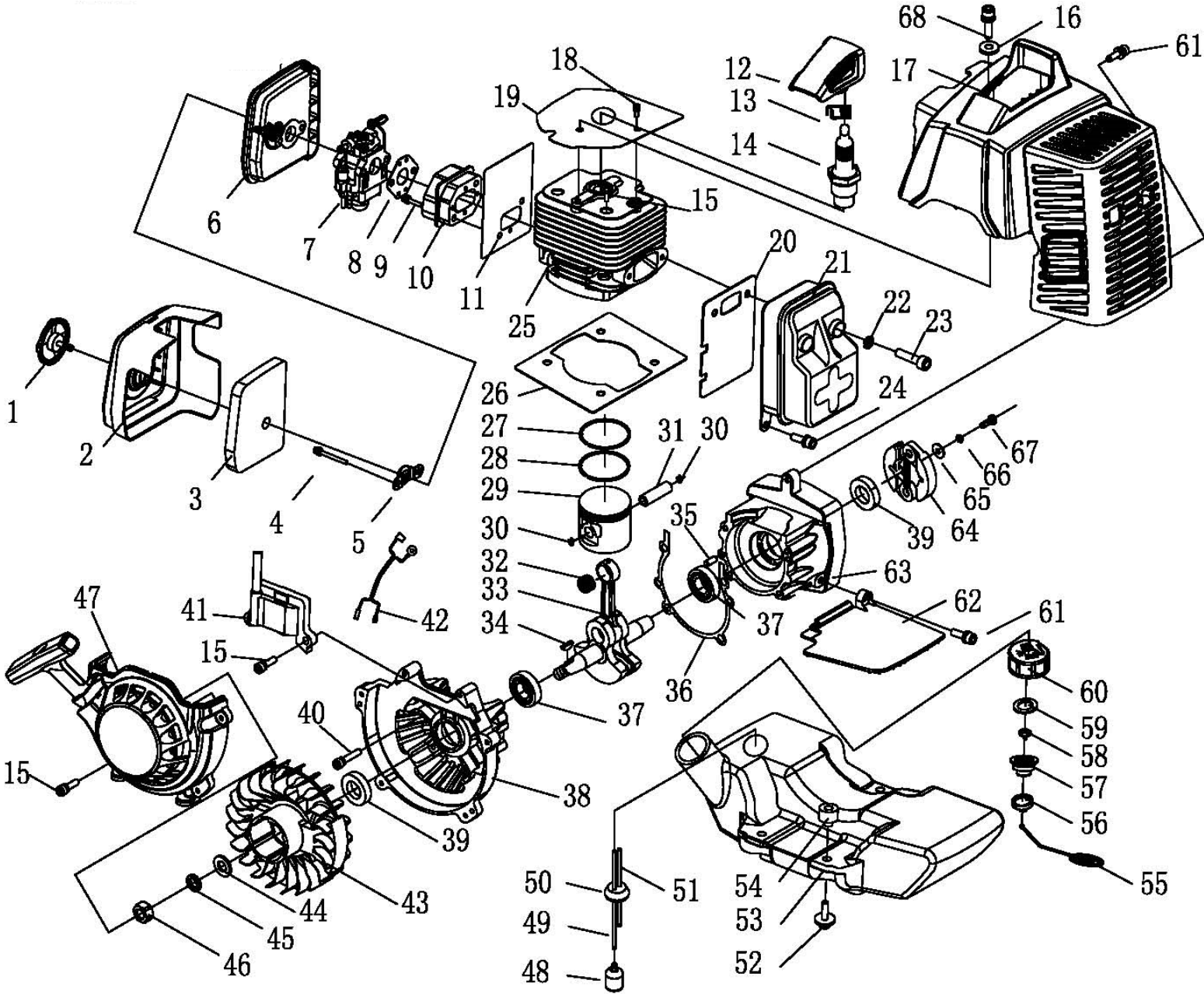
MODEL	APW-MPJ-63
ENGINE	SINGLE CYLINDER -2S
DISPLACEMENT	63CC
POWER	3HP
WEEDING WIDTH	43cm
WEEDING DEPTH	20-25CM

# STRUCTURE



1	HANDLE
2	SWITCH KEY
3	THROTTLE LEVER
4	HANDLE BRACKET
5	CLIP
6	SHIELD
7	WHEEL BRACKET
8	DEPTH ADJUST PLATE
9	DEPTH ADJUST PLATE BRACKET
10	WHEEL
11	SUPPORT BAT
12	WORM ASSEMBLY
13	BLADE ASSEMBLY
14	ENGINE

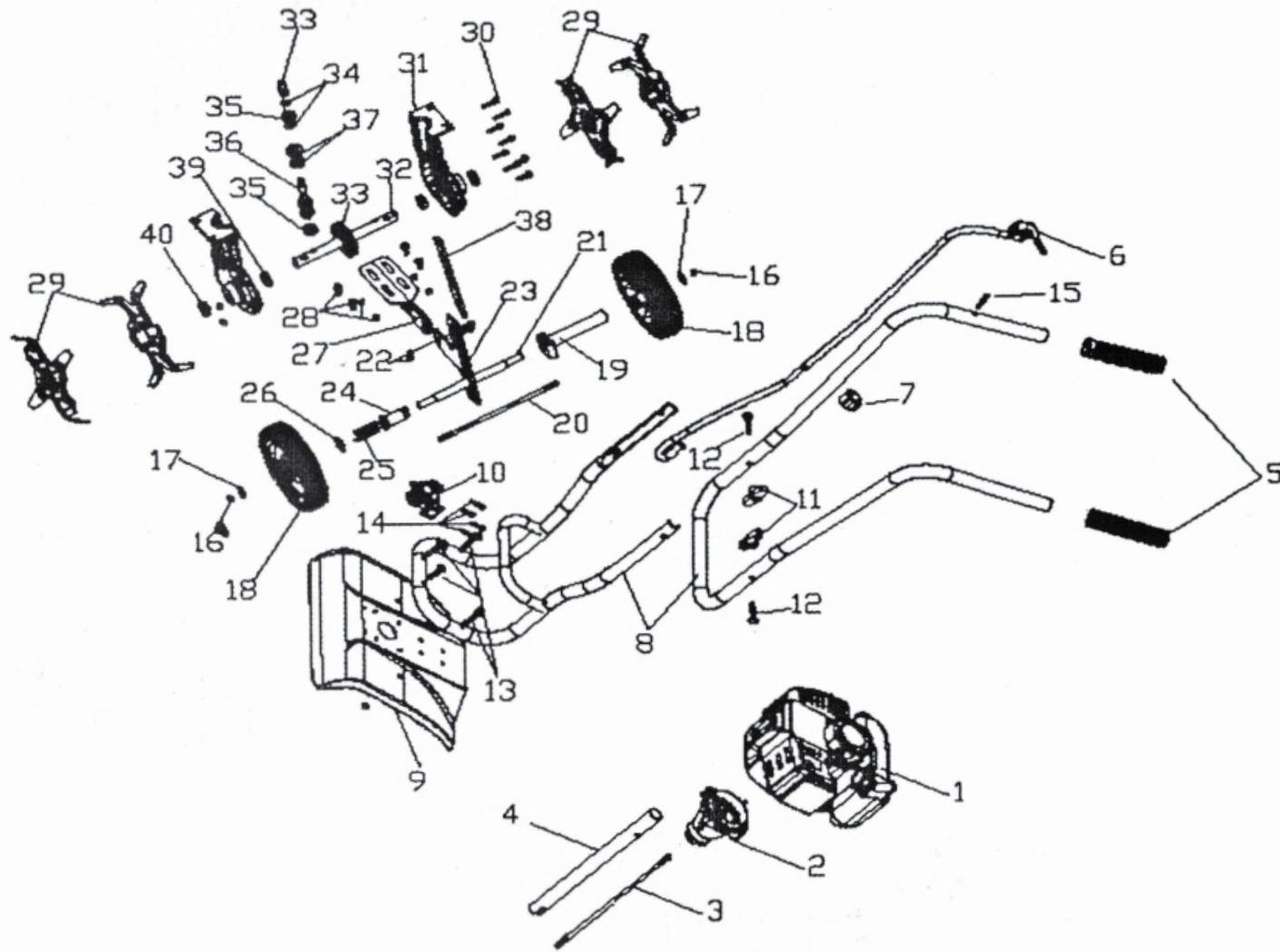
# ENGINE DIAGRAM & PART LIST



SL NO	PART NO	DESCRIPTION	SL NO	PART NO	DESCRIPTION
1	APW-MPJ-E01	SCREW	17	APW-MPJ-E17	GUIDE COVER ASS'Y
2	APW-MPJ-E02	CLEANER OUTSIDE COVER	18	APW-MPJ-E18	SCREW
3	APW-MPJ-E03	FILTER NET	19	APW-MPJ-E19	CLAPBOARD
4	APW-MPJ-E04	SCREW	20	APW-MPJ-E20	GASKET
5	APW-MPJ-E05	BAFFLE	21	APW-MPJ-E21	MUFFLER
6	APW-MPJ-E06	CLEANER INSIDE COVER	22	APW-MPJ-E22	WASHER
7	APW-MPJ-E07	CARBURETOR	23	APW-MPJ-E23	SCREW
8	APW-MPJ-E08	GASKET	24	APW-MPJ-E24	SCREW
9	APW-MPJ-E09	SCREW	25	APW-MPJ-E25	CYLINDER
10	APW-MPJ-E10	ADMITTING PIPE	26	APW-MPJ-E26	GASKET
11	APW-MPJ-E11	GASKET	27	APW-MPJ-E27	PISTON RING
12	APW-MPJ-E12	CAP	28	APW-MPJ-E28	PISTON RING
13	APW-MPJ-E13	SPRING	29	APW-MPJ-E29	PISTON
14	APW-MPJ-E14	PLUG	30	APW-MPJ-E30	RING
15	APW-MPJ-E15	SCREW	31	APW-MPJ-E31	PISTON PIN
16	APW-MPJ-E16	GASKET	32	APW-MPJ-E32	BEARING

SL NO	PART NO	DESCRIPTION	SL NO	PART NO	DESCRIPTION
33	APW-MPJ-E33	CRANK SHAFT ASS'Y	52	APW-MPJ-E52	SCREW
34	APW-MPJ-E34	KEY	53	APW-MPJ-E53	FUEL TANK
35	APW-MPJ-E35	PIN	54	APW-MPJ-E54	GASKET
36	APW-MPJ-E36	GASKET	55	APW-MPJ-E55	CHAIN
37	APW-MPJ-E37	BEARING	56	APW-MPJ-E56	COVER
38	APW-MPJ-E38	CRANK CASE	57	APW-MPJ-E57	INSIDE COVER
39	APW-MPJ-E39	SEAL	58	APW-MPJ-E58	INLET
40	APW-MPJ-E40	SCREW	59	APW-MPJ-E59	GASKET
41	APW-MPJ-E41	COIL	60	APW-MPJ-E60	FUEL TANK LID
42	APW-MPJ-E42	CORD COMP.	61	APW-MPJ-E61	SCREW
43	APW-MPJ-E43	FLY WHEEL	62	APW-MPJ-E62	CLAPBOARD
44	APW-MPJ-E44	WASHER	63	APW-MPJ-E63	CRANK CASE
45	APW-MPJ-E45	WASHER	64	APW-MPJ-E64	CLUTCH
46	APW-MPJ-E46	NUT	65	APW-MPJ-E65	WASHER
47	APW-MPJ-E47	STARTER	66	APW-MPJ-E66	WASHER
48	APW-MPJ-E48	FILTER	67	APW-MPJ-E67	BOLT
49	APW-MPJ-E49	FUEL PIPE	68	APW-MPJ-E68	SCREW
50	APW-MPJ-E50	PLUG	69	APW-MPJ-E69	BOLT
51	APW-MPJ-E51	FUEL PIPE	70	APW-MPJ-E70	SCREW

# TRANSMISSION DIAGRAM








SL NO	PART NO	DESCRIPTION	SL NO	PART NO	DESCRIPTION
1	APW-MPJ-T01	Engine	11	APW-MPJ-T11	plastic nut
2	APW-MPJ-T02	Connect	12	APW-MPJ-T12	Bolt
3	APW-MPJ-T03	Transmission Shaft	13	APW-MPJ-T13	Bolt
4	APW-MPJ-T04	Aluminium pipe	14	APW-MPJ-T14	Bolt
5	APW-MPJ-T05	Handle Cover	15	APW-MPJ-T15	Bolt
6	APW-MPJ-T06	Throttle lever	16	APW-MPJ-T16	Nut
7	APW-MPJ-T07	Wire Clip	17	APW-MPJ-T17	Washer
8	APW-MPJ-T08	Handle Cover	18	APW-MPJ-T18	Wheel
9	APW-MPJ-T09	Shield	19	APW-MPJ-T19	Up & Down adjustment
10	APW-MPJ-T10	Alumium base	20	APW-MPJ-T20	Screw rod



SL NO	PART NO	DESCRIPTION	SL NO	PART NO	DESCRIPTION
21	APW-MPJ-T21	Wheel Sleeve	31	APW-MPJ-T31	Worm gear box house
22	APW-MPJ-T22	Bolt/Nut	32	APW-MPJ-T32	Rotate shaft
23	APW-MPJ-T23	Up/Down Adjustment plate	33	APW-MPJ-T33	Copper gear
24	APW-MPJ-T24	Sleeve	34	APW-MPJ-T34	Clip Spring
25	APW-MPJ-T25	Spring	35	APW-MPJ-T35	bearing
26	APW-MPJ-T26	Washer	36	APW-MPJ-T36	Worm Shaft
27	APW-MPJ-T27	Back Bracket	37	APW-MPJ-T37	Bearing
28	APW-MPJ-T28	Bolt/Nut	38	APW-MPJ-T38	Support pole
29	APW-MPJ-T29	Blade	39	APW-MPJ-T39	Bearing
30	APW-MPJ-T30	Blot/Nut	40	APW-MPJ-T40	Oil seal






# WARRANTY CARD

## CUSTOMER COPY

DATE _____	DATE OF DELIVERY _____	DEALERS OFFICIAL SEAL	DEALERS SIGN _____
PURCHASERS NAME & ADDRESS _____ _____	 CUSTOMER SIGN		
PRODUCT NAME	PRODUCT SERIAL NO.	INVOICE/DN NO.	
			






I/Will accept the terms and conditions of warranty as in the warranty card

## DEALERS COPY

DATE _____	DATE OF DELIVERY _____	DEALERS OFFICIAL SEAL	DEALERS SIGN _____
PURCHASERS NAME & ADDRESS _____ _____	 CUSTOMER SIGN		
PRODUCT NAME	PRODUCT SERIAL NO.	INVOICE/DN NO.	
			

I/Will accept the terms and conditions of warranty as in the warranty card

## COMPANY COPY

DATE _____	DATE OF DELIVERY _____	DEALERS OFFICIAL SEAL	DEALERS SIGN _____
PURCHASERS NAME & ADDRESS _____ _____	 CUSTOMER SIGN		
PRODUCT NAME	PRODUCT SERIAL NO.	INVOICE/DN NO.	
			

I/Will accept the terms and conditions of warranty as in the warranty card

1. LIMITED WARRANTY PERIOD : For a period of six months from the date of Sale / delivery of the product which ever is earlier. 2. LIMITED WARRANTY OBLIGATION : Replacement of defective part(s) by authorized dealer are free of charges. If found defective by reasons of defective material / poor workmanship, parts will be replaced and there will be no value re-imburement. 3. TERMS & CONDITIONS : a. Claims under warranty will be accepted on submission of Warranty Card duly filled and stamped by authorized dealer together with the original purchase document. : b. Shipping / transportation / Incidental charges incurred in replacing defective parts under warranty shall be borne by the purchaser

WARRANTY null & void if

- (i) Lack of maintenance, (ii) Incorrect use of the machine or tampering, (iii) Use of non-genuine spare parts, (iv) Usage of acids, solvents, or any flammable materials, (v) Non-usage of filter water / clear water / soft water & using water above 40°C temperature, (vi) While using the pressure washers to draw water which is contaminated with dust & solvents (eg. paint thinners, gasoline, oil, etc.), (vii) Repair done by unauthorized service people, (viii) Those parts subject to wear & tear due to normal operations and plastic parts, rubber items etc, (ix) Loose connections, faulty electrical fixtures & fluctuations in power supply.
- 4. Should any failure occur during or after the warranty period, customer does not have the right to interrupt payment / price discount.
- 5. Incidental or consequential damages like inconvenience commercial loss, loss of tie, mental agony etc.
- 6. Loss of any nature due to operation or non-operation is not covered under warranty.
- 7. All free service are at Dealer's service point only.
- 8. Warranty ceases if service is not done periodically.
- 9. The attached card should be completed and returned to Ratnagiri Impex Pvt. Ltd. for registration immediately after sale / delivery.
- 10. The warranty is void unless you register the warranty card with Ratnagiri Impex Pvt. Ltd.
- 11. The decision of Ratnagiri Impex Pvt. Ltd., in settling the warranty is final in all respects.
- 12. All disputes are subject to Bangalore Courts Jurisdiction

1. LIMITED WARRANTY PERIOD : For a period of six months from the date of Sale / delivery of the product which ever is earlier. 2. LIMITED WARRANTY OBLIGATION : Replacement of defective part(s) by authorized dealer are free of charges. If found defective by reasons of defective material / poor workmanship, parts will be replaced and there will be no value re-imburement. 3. TERMS & CONDITIONS : a. Claims under warranty will be accepted on submission of Warranty Card duly filled and stamped by authorized dealer together with the original purchase document. : b. Shipping / transportation / Incidental charges incurred in replacing defective parts under warranty shall be borne by the purchaser.

WARRANTY null & void if

- (i) Lack of maintenance, (ii) Incorrect use of the machine or tampering, (iii) Use of non-genuine spare parts, (iv) Usage of acids, solvents, or any flammable materials, (v) Non-usage of filter water / clear water / soft water & using water above 40°C temperature, (vi) While using the pressure washers to draw water which is contaminated with dust & solvents (eg. paint thinners, gasoline, oil, etc.), (vii) Repair done by unauthorized service people, (viii) Those parts subject to wear & tear due to normal operations and plastic parts, rubber items etc, (ix) Loose connections, faulty electrical fixtures & fluctuations in power supply.
- 4. Should any failure occur during or after the warranty period, customer does not have the right to interrupt payment / price discount.
- 5. Incidental or consequential damages like inconvenience commercial loss, loss of tie, mental agony etc.
- 6. Loss of any nature due to operation or non-operation is not covered under warranty.
- 7. All free service are at Dealer's service point only.
- 8. Warranty ceases if service is not done periodically.
- 9. The attached card should be completed and returned to Ratnagiri Impex Pvt. Ltd. for registration immediately after sale / delivery.
- 10. The warranty is void unless you register the warranty card with Ratnagiri Impex Pvt. Ltd.
- 11. The decision of Ratnagiri Impex Pvt. Ltd., in settling the warranty is final in all respects.
- 12. All disputes are subject to Bangalore Courts Jurisdiction

1. LIMITED WARRANTY PERIOD : For a period of six months from the date of Sale / delivery of the product which ever is earlier. 2. LIMITED WARRANTY OBLIGATION : Replacement of defective part(s) by authorized dealer are free of charges. If found defective by reasons of defective material / poor workmanship, parts will be replaced and there will be no value re-imburement. 3. TERMS & CONDITIONS : a. Claims under warranty will be accepted on submission of Warranty Card duly filled and stamped by authorized dealer together with the original purchase document. : b. Shipping / transportation / Incidental charges incurred in replacing defective parts under warranty shall be borne by the purchaser.

WARRANTY null & void if

- (i) Lack of maintenance, (ii) Incorrect use of the machine or tampering, (iii) Use of non-genuine spare parts, (iv) Usage of acids, solvents, or any flammable materials, (v) Non-usage of filter water / clear water / soft water & using water above 40°C temperature, (vi) While using the pressure washers to draw water which is contaminated with dust & solvents (eg. paint thinners, gasoline, oil, etc.), (vii) Repair done by unauthorized service people, (viii) Those parts subject to wear & tear due to normal operations and plastic parts, rubber items etc, (ix) Loose connections, faulty electrical fixtures & fluctuations in power supply.
- 4. Should any failure occur during or after the warranty period, customer does not have the right to interrupt payment / price discount.
- 5. Incidental or consequential damages like inconvenience commercial loss, loss of tie, mental agony etc.
- 6. Loss of any nature due to operation or non-operation is not covered under warranty.
- 7. All free service are at Dealer's service point only.
- 8. Warranty ceases if service is not done periodically.
- 9. The attached card should be completed and returned to Ratnagiri Impex Pvt. Ltd. for registration immediately after sale / delivery.
- 10. The warranty is void unless you register the warranty card with Ratnagiri Impex Pvt. Ltd.
- 11. The decision of Ratnagiri Impex Pvt. Ltd., in settling the warranty is final in all respects.
- 12. All disputes are subject to Bangalore Courts Jurisdiction



**FREE SERVICE COUPON (30DAYS/30HRS. WHICHEVER IS EARLIER)**

MODEL

SERIAL NUMBER

PDI DATE

SERVICE NO.

PURCHASE BILL NO.

DATE

DEALERS OFFICE SEAL

- 1. Check and test the fuel mixture
- 3. Check , clean and adjust the spark plug
- 5. Check and sparken the cutting tools
- 7. Start and check the noise, vibration, loosen etc..

OPERATIONS

- 2. check and clean the air filter
- 4. Check and adjust the carburetor tuning
- 6. Product familirisation on usage
- 8. Routine maintenance and shortage.

**FREE SERVICE COUPON (30DAYS/30HRS. WHICHEVER IS EARLIER)**

MODEL

SERIAL NUMBER

PDI DATE

SERVICE NO.

PURCHASE BILL NO.

DATE

DEALERS OFFICE SEAL

- 1. Check and test the fuel mixture
- 3. Check , clean and adjust the spark plug
- 5. Check and sparken the cutting tools
- 7. Start and check the noise, vibration, loosen etc..

OPERATIONS

- 2. check and clean the air filter
- 4. Check and adjust the carburetor tuning
- 6. Product familirisation on usage
- 8. Routine maintenance and shortage.

**FREE SERVICE COUPON (30DAYS/30HRS. WHICHEVER IS EARLIER)**

MODEL

SERIAL NUMBER

PDI DATE

SERVICE NO.

PURCHASE BILL NO.

DATE

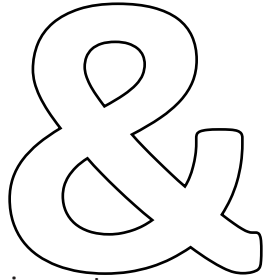
DEALERS OFFICE SEAL

- 1. Check and test the fuel mixture
- 3. Check , clean and adjust the spark plug
- 5. Check and sparken the cutting tools
- 7. Start and check the noise, vibration, loosen etc..

OPERATIONS

- 2. check and clean the air filter
- 4. Check and adjust the carburetor tuning
- 6. Product familirisation on usage
- 8. Routine maintenance and shortage.

# DOS



# DONT'S

attempting to use the equipments.

1. Always read the instruction manual supplied along with the equipments and understand the correct installation and operating procedures before  
  
trousers and jackets while operating potentially dangerous machines
2. It is important to use the personal protection equipments such as head helmet with visor, ear defenders, goggles, safety gloves, cut resistant shoes,
3. Avoid untrained persons using the equipments. Children must not be allowed to handle these equipments
4. Always use genuine spares and accessories in repairs and usage to derive maximum life of the equipments.
5. Always keep the equipments in good working condition to minimize loss of output as well as to reduce the pollution and save the environment
6. Do not use the machine within range of persons unless they wear protective clothing
7. Do not operate the machine when fatigued or under the influence of alcohol or drugs
8. For more query kindly contact for our Service Center/Dealer/ franchise

# NO. 1 CHOICE OF FARMERS SINCE 1999



Marketed by.  
**ratnagiri  
impex**  
BRINGING YOU THE FUTURE... NOW

**RATNAGIRI IMPEX PVT., LTD.,**

Annapurna House, #1 / 1G, 7th Cross, New  
Guddadahalli

Mysore Road, Bangalore - 560 026

Missed Call : 7393 938 938

Email: [ask@agrimart.in](mailto:ask@agrimart.in)