



USER MANUAL

INTERCULTIVATOR/POWER WEEDER

GP-5DE-ICT SELF START

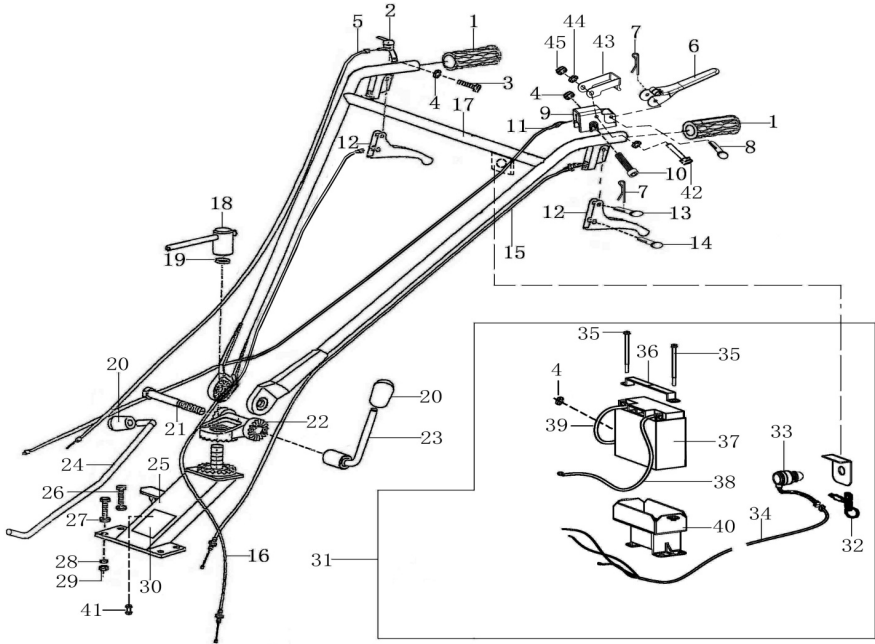
GP-5D-ICT RECOIL START



BEFORE OPERATING THIS MACHINE PLEASE READ
INSTRUCTION MANUAL CAREFULLY

TRANSMISSION DIGRAM & PART LIST OF GP-5D-ICT

HANDLE CONTROL PARTS



SL NO	PART NO	DESCRIPTION
1	GP-ICT-TA01	Handle Grip
2	GP-ICT-TA02	Shut Down Switch Comp
3	GP-ICT-TA03	Bolt
4	GP-ICT-TA04	Nut
5	GP-ICT-TA05	Throttle Cable Comp
6	GP-ICT-TA06	Flameout switch
7	GP-ICT-TA07	Clip
8	GP-ICT-TA08	Pin
9	GP-ICT-TA09	Flameout switch Seat
10	GP-ICT-TA10	Bolt

TRANSMISSION DIGRAM & PART LIST OF GP-5D-ICT

SL NO	PART NO	DESCRIPTION
1	GP-ICT-TB01	Sheath, Shift rod
2	GP-ICT-TB02	Pin , Shift rod
3	GP-ICT-TB03	Splitpin
4	GP-ICT-TB04	Bush Shift axes
5	GP-ICT-TB05	O-ring
6	GP-ICT-TB06	Shift axes
7	GP-ICT-TB07	Shift fork
8	GP-ICT-TB08	Shift gear box
9	GP-ICT-TB09	Oil stick
10	GP-ICT-TB10	O-ring, oil stick
11	GP-ICT-TB11	Principal axes
12	GP-ICT-TB12	Ring GB/T
13	GP-ICT-TB13	Steel ball GB/T
14	GP-ICT-TB14	Spring, Principal axes
15	GP-ICT-TB15	Iniative gear
16	GP-ICT-TB16	Axletree
17	GP-ICT-TB17	O-ring
18	GP-ICT-TB18	Pushing panel
19	GP-ICT-TB19	Oil seal B

TRANSMISSION DIGRAM & PART LIST OF GP-5D-ICT

SL NO	PART NO	DESCRIPTION
20	GP-ICT-TB20	O-ring
21	GP-ICT-TB21	Sheath, principal axes
22	GP-ICT-TB22	Gasket
23	GP-ICT-TB23	Nut
24	GP-ICT-TB24	Key
25	GP-ICT-TB25	Sheath, Key
26	GP-ICT-TB26	Gasket
27	GP-ICT-TB27	Spring washer
28	GP-ICT-TB28	Hex bolts
29	GP-ICT-TB29	Protec cover, principal axes
30	GP-ICT-TB30	Screw
31	GP-ICT-TB31	Splitpin
32	GP-ICT-TB32	Nut
33	GP-ICT-TB33	Washer
34	GP-ICT-TB34	Restrict cover, reverse gear
35	GP-ICT-TB35	Spring
36	GP-ICT-TB36	Spring seat, reverse gear
37	GP-ICT-TB37	Double gear, reverse gear

TRANSMISSION DIGRAM & PART LIST OF GP-5D-ICT

SL NO	PART NO	DESCRIPTION
38	GP-ICT-TB38	Pushing plate, reverse gear
39	GP-ICT-TB39	Axes, reverse gear
40	GP-ICT-TB40	Washer
41	GP-ICT-TB41	Spring washer
42	GP-ICT-TB42	Bolt
43	GP-ICT-TB43	Splitpin GB/T
44	GP-ICT-TB44	Nut GB/T
45	GP-ICT-TB45	Gasket
46	GP-ICT-TB46	Iniative umbrella gear
47	GP-ICT-TB47	Countershaft
48	GP-ICT-TB48	Key
49	GP-ICT-TB49	Ball bearing
50	GP-ICT-TB50	Double gear, counter-shaft
51	GP-ICT-TB51	Gasket, countershaft
52	GP-ICT-TB52	Sheath, countershaft
53	GP-ICT-TB53	Thrust ball bearing
54	GP-ICT-TB54	O-ring
55	GP-ICT-TB55	Column pin

TRANSMISSION DIGRAM & PART LIST OF GP-5D-ICT

SL NO	PART NO	DESCRIPTION
56	GP-ICT-TB56	Gasket
57	GP-ICT-TB57	Spring washer
58	GP-ICT-TB58	Bolt
59	GP-ICT-TB59	Sheath
60	GP-ICT-TB60	Worm column pin
61	GP-ICT-TB61	Reverse gear fork
62	GP-ICT-TB62	Axes, reverse gear fork
63	GP-ICT-TB63	Nut
64	GP-ICT-TB64	Seat, reverse gear cable
65	GP-ICT-TB65	Seat, clutch cable
66	GP-ICT-TB66	Seat, clutch cable
67	GP-ICT-TB67	Spring washer
68	GP-ICT-TB68	Pin ,clutch fork
69	GP-ICT-TB69	Axes, clutch fork
70	GP-ICT-TB70	Clutch fork
71	GP-ICT-TB71	Ring
72	GP-ICT-TB72	Clutch washer
73	GP-ICT-TB73	Axletree

TRANSMISSION DIGRAM & PART LIST OF GP-5D-ICT

SL NO	PART NO	DESCRIPTION
74	GP-ICT-TB74	Gasket
75	GP-ICT-TB75	Sawtooth locked gasket
76	GP-ICT-TB76	Flange bolt
77	GP-ICT-TB77	Axletree
78	GP-ICT-TB78	Core comp, clutch
79	GP-ICT-TB79	Screw
80	GP-ICT-TB80	Cover, cushion
81	GP-ICT-TB81	Spline plate, clutch
82	GP-ICT-TB82	Cushion
83	GP-ICT-TB83	Cover, clutch
84	GP-ICT-TB84	Core comp, clutch
85	GP-ICT-TB85	Platen
86	GP-ICT-TB86	Friction piece
87	GP-ICT-TB87	Driven piece
88	GP-ICT-TB88	Driven plate assy
89	GP-ICT-TB89	Spring
90	GP-ICT-TB90	Lift slab assy
91	GP-ICT-TB91	Screw

TRANSMISSION DIGRAM & PART LIST OF GP-5D-ICT

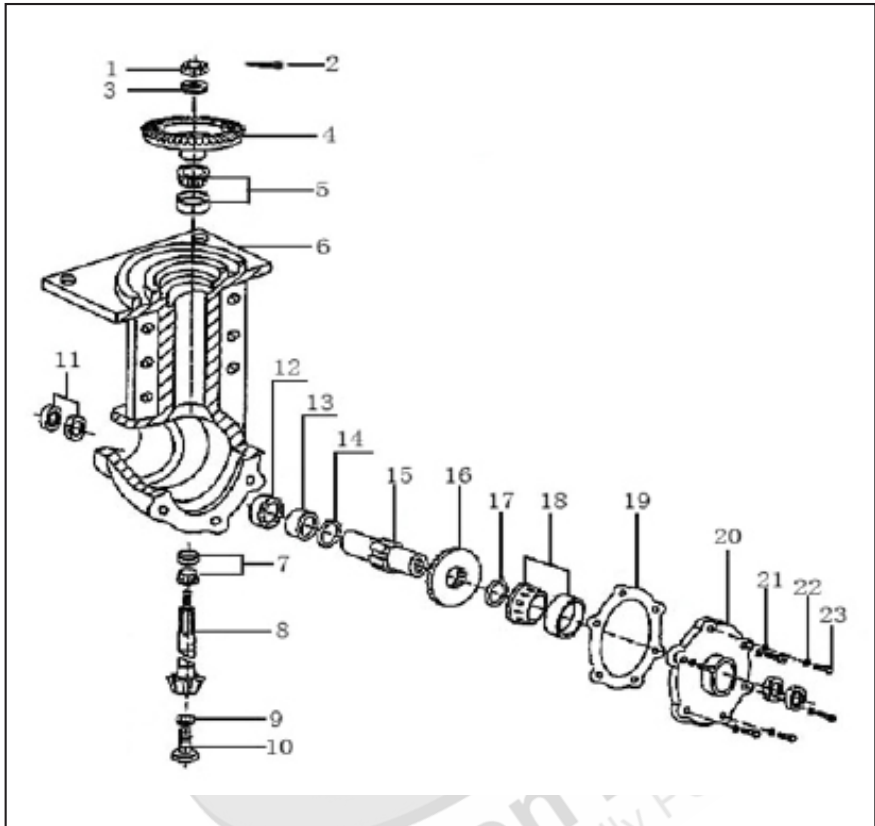
SL NO	PART NO	DESCRIPTION
92	GP-ICT-TB92	Steel ring
93	GP-ICT-TB93	Fixed sheath
94	GP-ICT-TB94	Ball bearing
95	GP-ICT-TB95	Active Pushing cover
96	GP-ICT-TB96	Gasket
97	GP-ICT-TB97	O-ring
98	GP-ICT-TB98	Washer



Green Panther
Naturally Powerful

TRANSMISSION DIGRAM & PART LIST OF GP-5D-ICT

Transmission Case Parts



SL NO	PART NO	DESCRIPTION
1	GP-ICT-TC01	Nut
2	GP-ICT-TC02	Splitpin
3	GP-ICT-TC03	Spring washer
4	GP-ICT-TC04	Driven umbrella gear
5	GP-ICT-TC05	Taper ball bearing
6	GP-ICT-TC06	Walking case

TRANSMISSION DIGRAM & PART LIST OF GP-5D-ICT

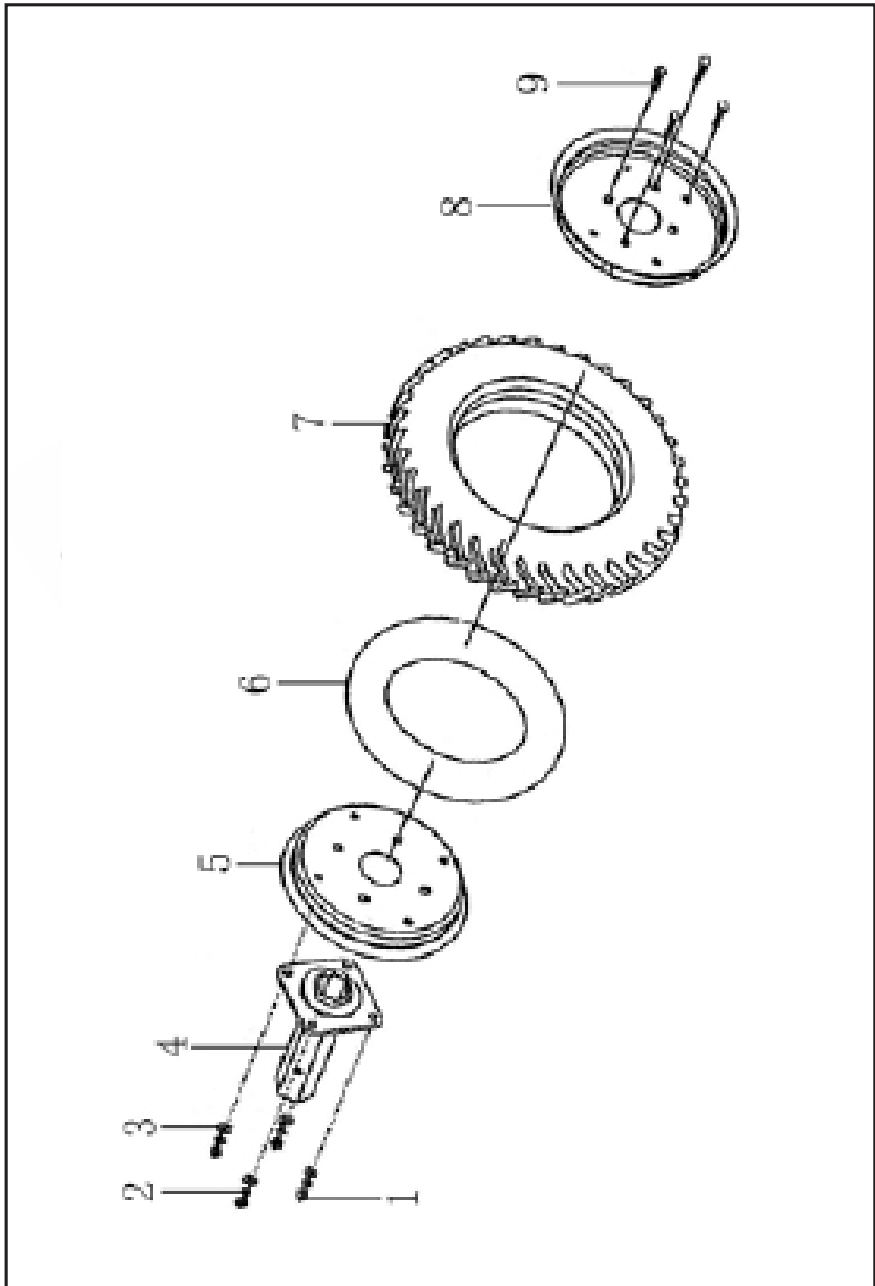
SL NO	PART NO	DESCRIPTION
1	GP-ICT-TC01	Nut
2	GP-ICT-TC02	Splitpin
3	GP-ICT-TC03	Spring washer
4	GP-ICT-TC04	Driven umbrella gear
5	GP-ICT-TC05	Taper ball bearing
6	GP-ICT-TC06	Walking case
14	GP-ICT-TC14	Gasket
15	GP-ICT-TC15	Cover, flange axes
16	GP-ICT-TC16	Walking umbrella gear
17	GP-ICT-TC17	Gasket
18	GP-ICT-TC18	Taper ball bearing
19	GP-ICT-TC19	Gasket
20	GP-ICT-TC20	Side cover, walking case
21	GP-ICT-TC21	Washer
22	GP-ICT-TC22	Spring washer
23	GP-ICT-TC23	Hex bolt

TRANSMISSION DIGRAM & PART LIST OF GP-5D-ICT

SL NO	PART NO	DESCRIPTION
1	GP-ICT-TD01	Round plate(optional)
2	GP-ICT-TD02	Counter tube
3	GP-ICT-TD03	Bolt
4	GP-ICT-TD04	Spring washer
5	GP-ICT-TD05	Nut
6	GP-ICT-TD06	Main tube
7	GP-ICT-TD07	Blade(L)
8	GP-ICT-TD08	Blade(R)
9	GP-ICT-TD09	Hex bolt
10	GP-ICT-TD10	Nut
11	GP-ICT-TD11	Washer
12	GP-ICT-TD12	Spring washer

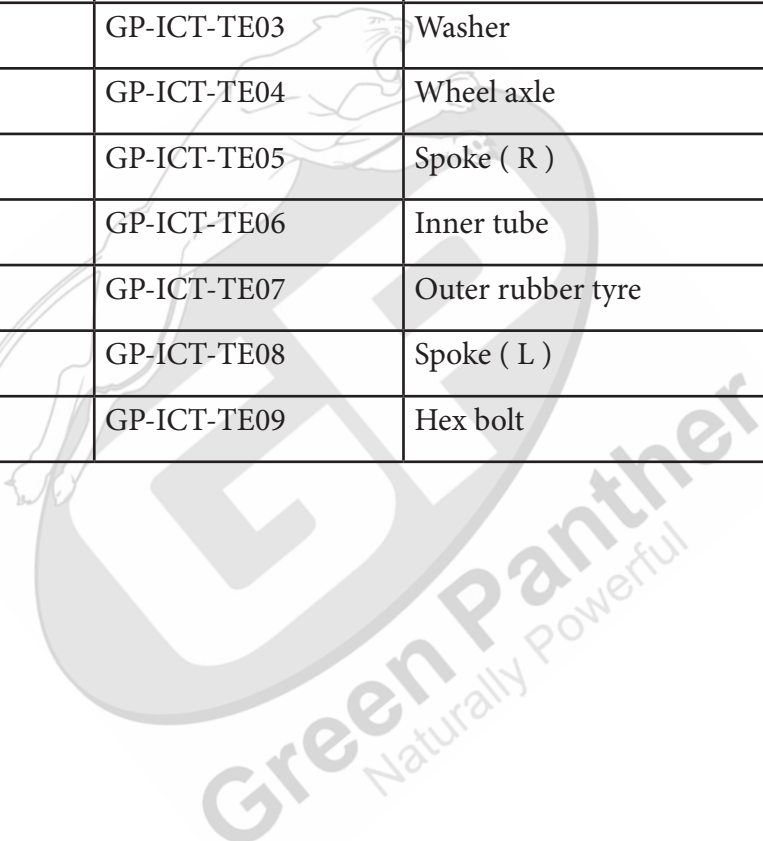
TRANSMISSION DIGRAM & PART LIST OF GP-5D-ICT

LAMBODIAL WHEEL PARTS



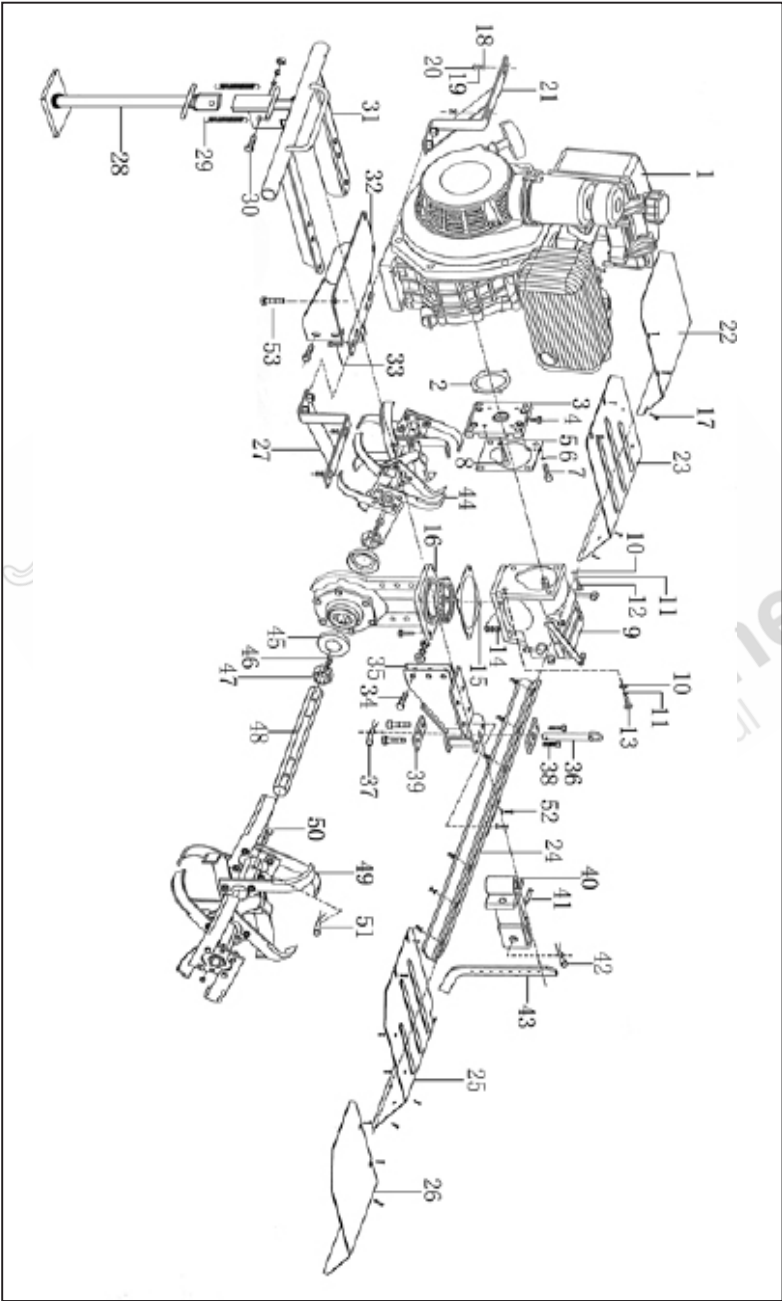
TRANSMISSION DIGRAM & PART LIST OF GP-5D-ICT

SL NO	PART NO	DESCRIPTION
1	GP-ICT-TE01	Nut
2	GP-ICT-TE02	Spring washer
3	GP-ICT-TE03	Washer
4	GP-ICT-TE04	Wheel axle
5	GP-ICT-TE05	Spoke (R)
6	GP-ICT-TE06	Inner tube
7	GP-ICT-TE07	Outer rubber tyre
8	GP-ICT-TE08	Spoke (L)
9	GP-ICT-TE09	Hex bolt

**Green Panther**
Naturally Powerful

TRANSMISSION DIGRAM & PART LIST OF GP-5D-ICT

Joint Part



TRANSMISSION DIGRAM & PART LIST OF GP-5D-ICT

SL NO	PART NO	DESCRIPTION
1	GP-ICT-TF01	Diesel engine comp
1.1	GP-ICT-TF1.1	Diesel engine comp (Electric start)
2	GP-ICT-TF02	Flange gasket
3	GP-ICT-TF03	Flange
4	GP-ICT-TF04	Bolt
5	GP-ICT-TF05	Airproof gasket, gear box
6	GP-ICT-TF06	Spring washer
7	GP-ICT-TF07	Screw
8	GP-ICT-TF08	Screw
9	GP-ICT-TF09	Gear box comp
10	GP-ICT-TF10	Washer
11	GP-ICT-TF11	Spring washer
12	GP-ICT-TF12	Bolts
13	GP-ICT-TF13	Bolts
14	GP-ICT-TF14	Nut
15	GP-ICT-TF15	Core comp, clutch
16	GP-ICT-TF16	Gear box comp

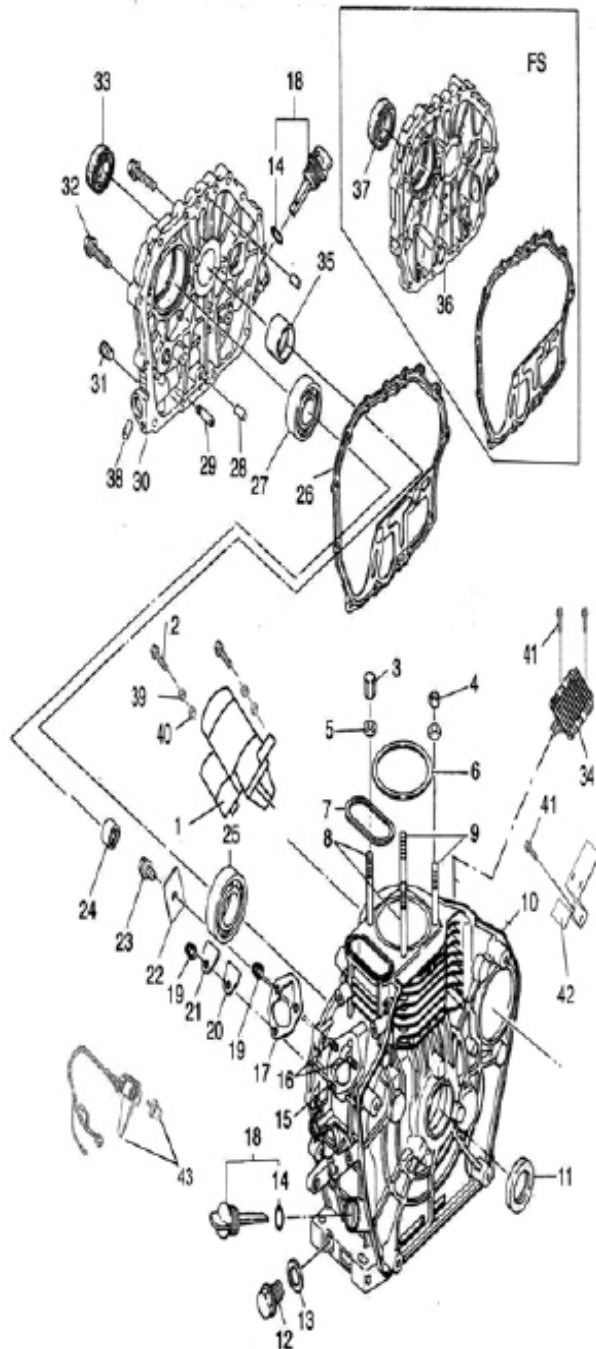
TRANSMISSION DIGRAM & PART LIST OF GP-5D-ICT

SL NO	PART NO	DESCRIPTION
17	GP-ICT-TF17	Bolts
18	GP-ICT-TF18	Washer
19	GP-ICT-TF19	Spring washer
20	GP-ICT-TF20	Nut
21	GP-ICT-TF21	Frame(R)
22	GP-ICT-TF22	Vice Dust cover(R)
23	GP-ICT-TF23	Bust cover (R)
24	GP-ICT-TF24	Frame, Dust cover (Back)
25	GP-ICT-TF25	Dust cover(L)
26	GP-ICT-TF26	Vice Dust cover(L)
27	GP-ICT-TF27	Frame(L)
28	GP-ICT-TF28	Bumper support
29	GP-ICT-TF29	Spring
30	GP-ICT-TF30	Falnge bolt
31	GP-ICT-TF31	Bumper comp
32	GP-ICT-TF32	Support frame, engine
33	GP-ICT-TF33	Bolts,

TRANSMISSION DIGRAM & PART LIST OF GP-5D-ICT

34	GP-ICT-TF34	Bolts,
35	GP-ICT-TF35	Dragging assy
36	GP-ICT-TF36	Pin with ring
37	GP-ICT-TF37	Clip
38	GP-ICT-TF38	Bolts
39	GP-ICT-TF39	Connection plate
40	GP-ICT-TF40	Connection frame
41	GP-ICT-TF41	Pin
42	GP-ICT-TF42	Clip
43	GP-ICT-TF43	Resistance rod
44	GP-ICT-TF44	Dry land blade comp(R)
45	GP-ICT-TF45	Dust protect cover
46	GP-ICT-TF46	Bolts
47	GP-ICT-TF47	Flange fix sheath
48	GP-ICT-TF48	Flange output axes
49	GP-ICT-TF49	Dry land blade comp(L)
50	GP-ICT-TF50	Pin
51	GP-ICT-TF51	Clip
52	GP-ICT-TF52	Flange bolt
53	GP-ICT-TF53	Flange bolt

ENGINE DIAGRAM & PART LIST OF GP-5D-ICT



ENGINE DIAGRAM & PART LIST OF GP-5D-ICT

SL NO	PART NO	DESCRIPTION
1	GP-5D-ICT-EA01	Start motor
2	GP-5D-ICT-EA02	Bolt
3	GP-5D-ICT-EA03	Cylinder head nuts (long)
4	GP-5D-ICT-EA04	Cylinder head nuts (short)
5	GP-5D-ICT-EA05	Cylinder head nut gasket
6	GP-5D-ICT-EA06	Cylinder head gasket
7	GP-5D-ICT-EA07	Rectangle ring gasket
8	GP-5D-ICT-EA08	Cylinder head bolts (long)
9	GP-5D-ICT-EA09	Cylinder head bolts (short)
10	GP-5D-ICT-EA10	Cylinder block
11	GP-5D-ICT-EA11	Rear oil seal
12	GP-5D-ICT-EA12	Oil drain plug
13	GP-5D-ICT-EA13	Oil drain plug gasket
14	GP-5D-ICT-EA14	O ring for oil dipstick
15	GP-5D-ICT-EA15	Fuel injection pump fastening bolt (short)
16	GP-5D-ICT-EA16	Fuel injection pump fastening bolt (long)
17	GP-5D-ICT-EA17	Fuel injector adjusting gasket

ENGINE DIAGRAM & PART LIST OF GP-5D-ICT

18	GP-5D-ICT-EA18	Oil dipstick
19	GP-5D-ICT-EA19	Heterotypic nut
20	GP-5D-ICT-EA20	Sealing plate gasket
21	GP-5D-ICT-EA21	Sealing plate
22	GP-5D-ICT-EA22	Thrust piece
23	GP-5D-ICT-EA23	bolts
24	GP-5D-ICT-EA24	Needle bearing
25	GP-5D-ICT-EA25	Ball bearing
26	GP-5D-ICT-EA26	Crankcase cover gasket
27	GP-5D-ICT-EA27	Bearing
28	GP-5D-ICT-EA28	Retaining pin
29	GP-5D-ICT-EA29	oil guide
30	GP-5D-ICT-EA30	Crankcase cover
31	GP-5D-ICT-EA31	Inner Hexagon Plug
32	GP-5D-ICT-EA32	Hexagon flange bolts
33	GP-5D-ICT-EA33	Front oil seal
34	GP-5D-ICT-EA34	Regulator
35	GP-5D-ICT-EA35	Main Bushing
36	GP-5D-ICT-EA36	Front side crankcase cover

ENGINE DIAGRAM & PART LIST OF GP-5D-ICT

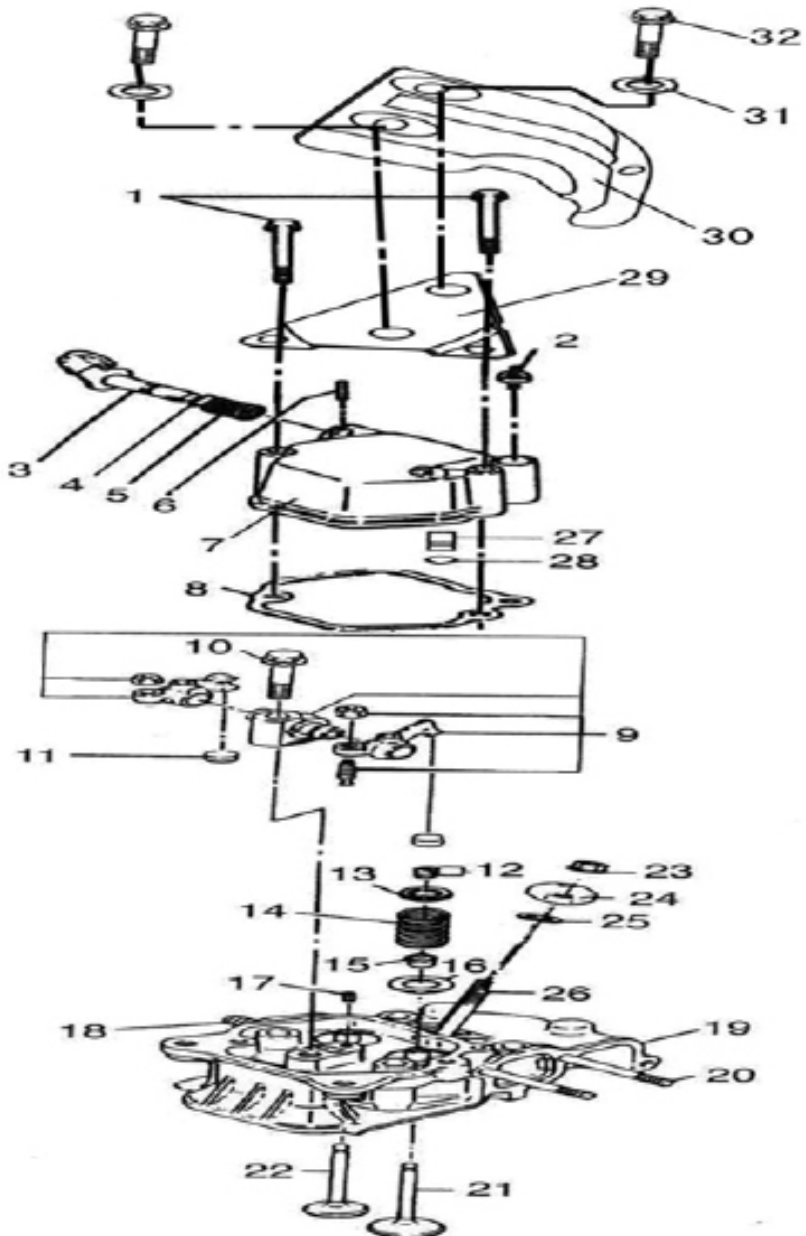
37	GP-5D-ICT-EA37	Front side oil seal
38	GP-5D-ICT-EA38	Aluminum Plug
39	GP-5D-ICT-EA39	flat washer
40	GP-5D-ICT-EA40	spring washer
41	GP-5D-ICT-EA41	Heterotypic bolt
42	GP-5D-ICT-EA42	Support of regulator
43	GP-5D-ICT-EA43	Start switch assembly



Green Panther
Naturally Powerful

ENGINE DIAGRAM & PART LIST OF GP-5D-ICT

Cylinder head

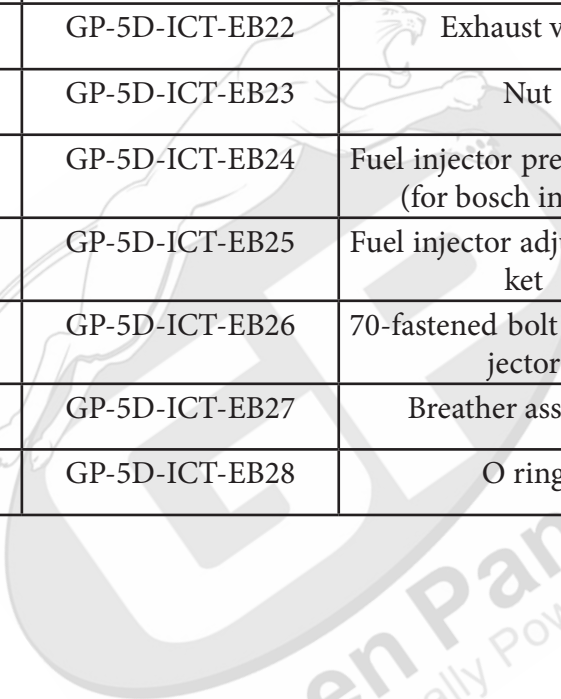


ENGINE DIAGRAM & PART LIST OF GP-5D-ICT

SL NO	PART NO	DESCRIPTION
1	GP-5D-ICT-EB01	Flanged Bolt
2	GP-5D-ICT-EB02	Oiling screw plug
3	GP-5D-ICT-EB03	Decompression shaft
4	GP-5D-ICT-EB04	O ring
5	GP-5D-ICT-EB05	Decompression shaft spring
6	GP-5D-ICT-EB06	Retaining pin
7	GP-5D-ICT-EB07	Cylinder head cover
8	GP-5D-ICT-EB08	Cylinder head cover gasket
9	GP-5D-ICT-EB09	Rocker arm
10	GP-5D-ICT-EB10	Rocker arm shaft fastening bolt
11	GP-5D-ICT-EB11	Adjusting valve spacer
12	GP-5D-ICT-EB12	Valve clip
13	GP-5D-ICT-EB13	Valve spring seat
14	GP-5D-ICT-EB14	Valve spring
15	GP-5D-ICT-EB15	GP-5D-ICT-EB15
16	GP-5D-ICT-EB16	Valve spring washer
17	GP-5D-ICT-EB17	GP-5D-ICT-EB17
18	GP-5D-ICT-EB18	Double ended stud

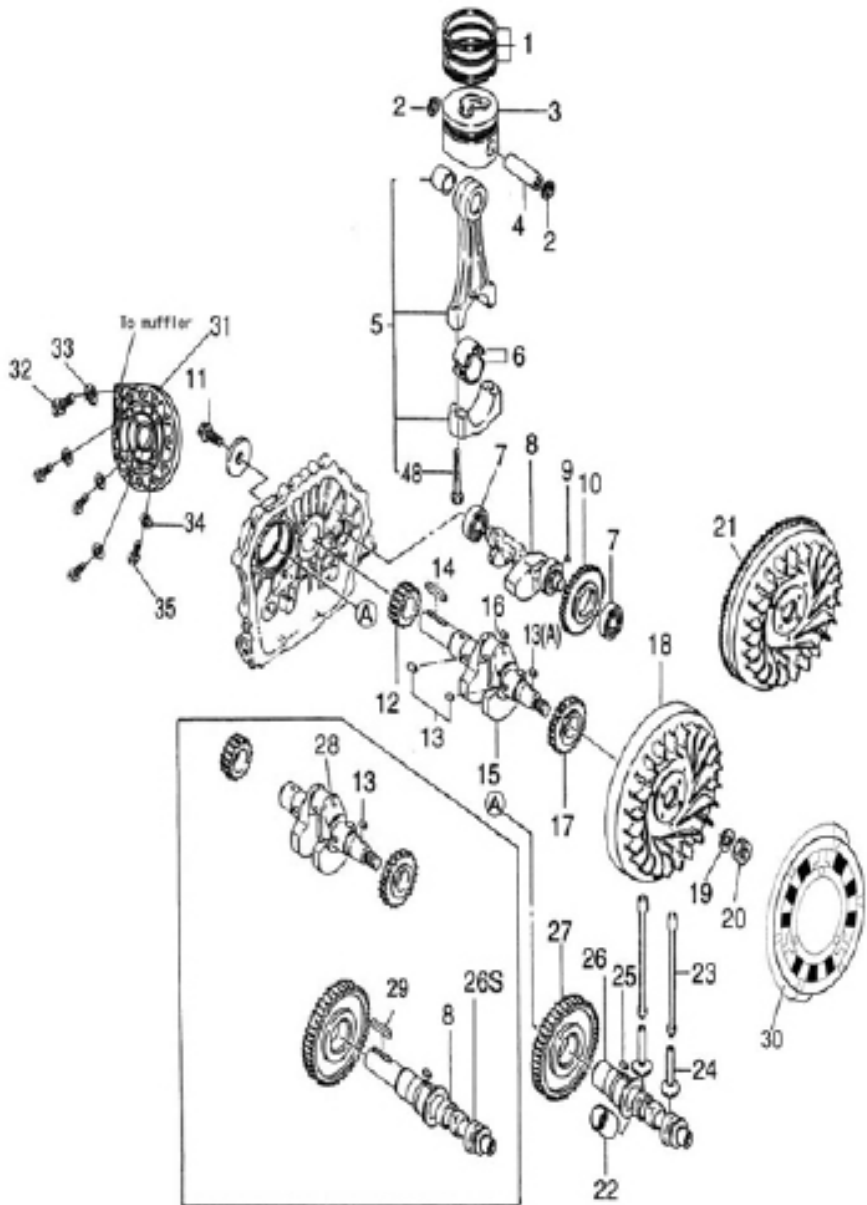
ENGINE DIAGRAM & PART LIST OF GP-5D-ICT

19	GP-5D-ICT-EB19	Cylinder Head
20	GP-5D-ICT-EB20	Double ended bolt
21	GP-5D-ICT-EB21	Intake valve
22	GP-5D-ICT-EB22	Exhaust valve
23	GP-5D-ICT-EB23	Nut
24	GP-5D-ICT-EB24	Fuel injector pressure plate (for bosch injector)
25	GP-5D-ICT-EB25	Fuel injector adjusting gas- ket
26	GP-5D-ICT-EB26	70-fastened bolt of fuel in- jector
27	GP-5D-ICT-EB27	Breather assembly
28	GP-5D-ICT-EB28	O ring


Green Panther
Naturally Powerful

ENGINE DIAGRAM & PART LIST OF GP-5D-ICT

CYLINDER HEAD

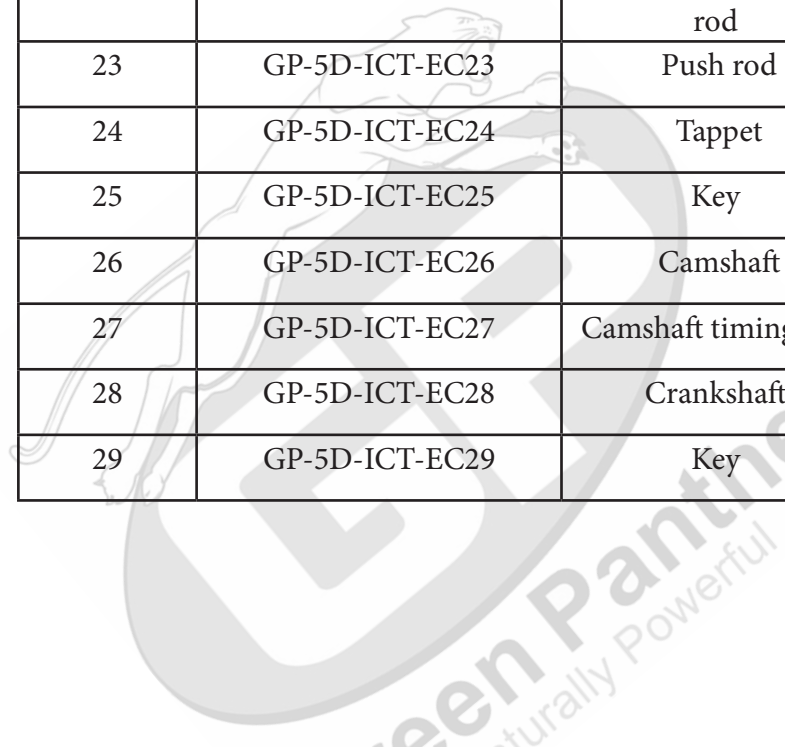


ENGINE DIAGRAM & PART LIST OF GP-5D-ICT

SL NO	PART NO	DESCRIPTION
1	GP-5D-ICT-EC01	Piston Ring group (standard)
2	GP-5D-ICT-EC02	Retainer clip of Piston pin
3	GP-5D-ICT-EC03	Piston
4	GP-5D-ICT-EC04	Piston pin
5	GP-5D-ICT-EC05	Connecting rod body
6	GP-5D-ICT-EC06	Connecting rod bush
7	GP-5D-ICT-EC07	Bearing
8	GP-5D-ICT-EC08	Balancing Shaft
9	GP-5D-ICT-EC09	Key
10	GP-5D-ICT-EC10	Balancing Shaft Timing Gear
11	GP-5D-ICT-EC11	Bolt
12	GP-5D-ICT-EC12	Crankshaft timing gear
13	GP-5D-ICT-EC13	Key
14	GP-5D-ICT-EC14	Key
15	GP-5D-ICT-EC15	Crankshaft
16	GP-5D-ICT-EC16	steel ball
17	GP-5D-ICT-EC17	Balancing Shaft Driving Gear
18	GP-5D-ICT-EC18	Flywheel

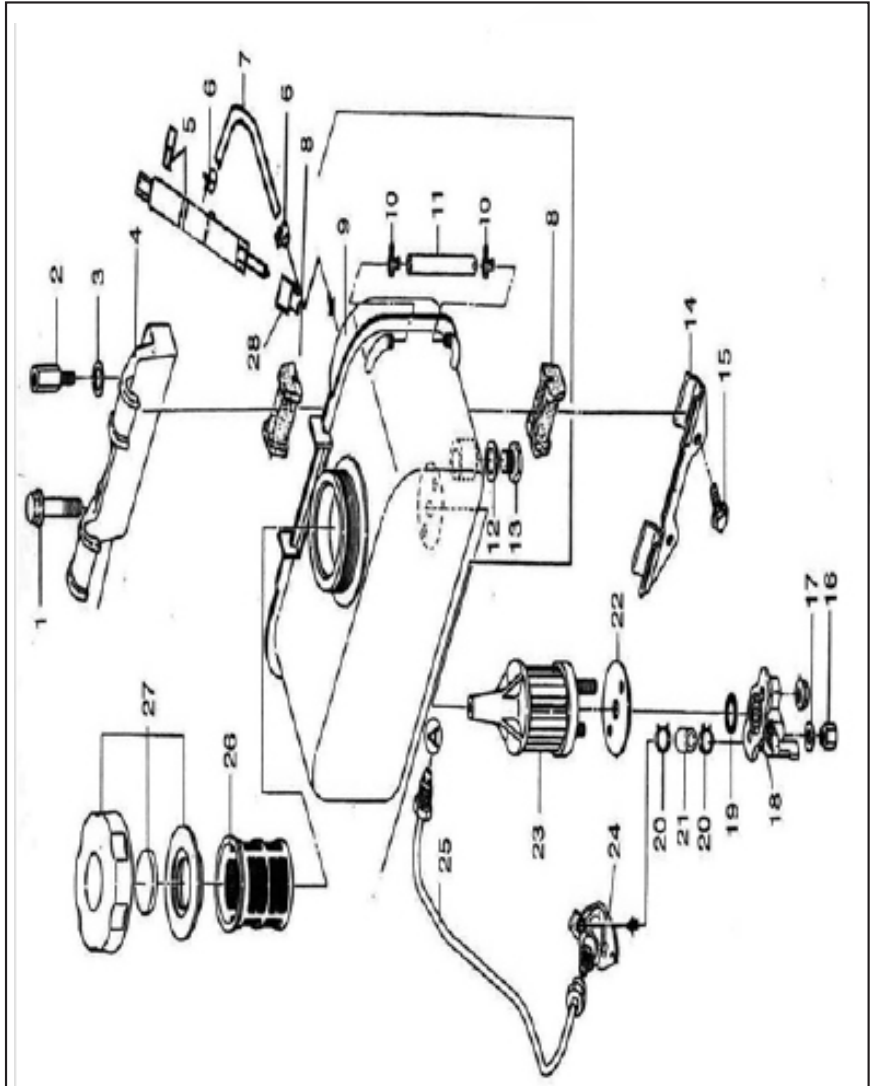
ENGINE DIAGRAM & PART LIST OF GP-5D-ICT

19	GP-5D-ICT-EC19	Flywheel nut gasket
20	GP-5D-ICT-EC20	flywheel Nut
21	GP-5D-ICT-EC21	Flywheel gear ring
22	GP-5D-ICT-EC22	Sleeve of fuel pump rod
23	GP-5D-ICT-EC23	Push rod
24	GP-5D-ICT-EC24	Tappet
25	GP-5D-ICT-EC25	Key
26	GP-5D-ICT-EC26	Camshaft
27	GP-5D-ICT-EC27	Camshaft timing gear
28	GP-5D-ICT-EC28	Crankshaft
29	GP-5D-ICT-EC29	Key


Green Panther
Naturally Powerful

ENGINE DIAGRAM & PART LIST OF GP-5D-ICT

FUEL TANK PARTS



ENGINE DIAGRAM & PART LIST OF GP-5D-ICT

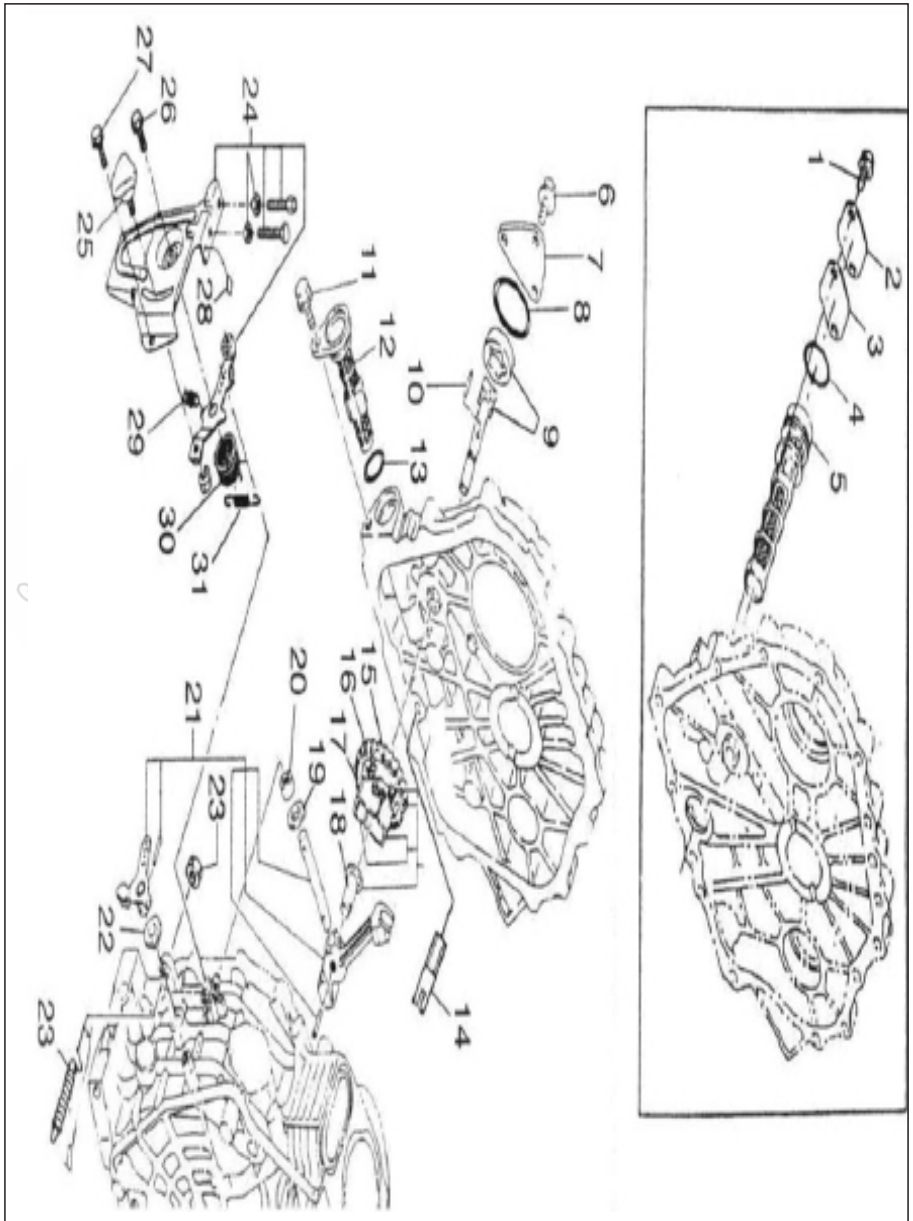
SL NO	PART NO	DESCRIPTION
1	GP-5D-ICT-ED01	Bolt
2	GP-5D-ICT-ED02	Upper fuel tank bracket fastening bolt
3	GP-5D-ICT-ED03	Flat washer
4	GP-5D-ICT-ED04	Upper fuel tank bracket
5	GP-5D-ICT-ED05	Injector(china type)
6	GP-5D-ICT-ED06	Fuel leak-off pipe connecting
7	GP-5D-ICT-ED07	Fuel leak-off Pipe
8	GP-5D-ICT-ED08	Shock absorbing pad of fuel tank
9	GP-5D-ICT-ED09	Fuel Tank
10	GP-5D-ICT-ED10	Fuel Pipe connecting
11	GP-5D-ICT-ED11	Fuel Pipe
12	GP-5D-ICT-ED12	Fuel drain gasket
13	GP-5D-ICT-ED13	Fuel drain plug(in the fuel tank)
14	GP-5D-ICT-ED14	Lower fuel tank bracket
15	GP-5D-ICT-ED15	Bolt
16	GP-5D-ICT-ED16	Nut
17	GP-5D-ICT-ED17	Flat washer
18	GP-5D-ICT-ED18	Fuel tank cock assembly

ENGINE DIAGRAM & PART LIST OF GP-5D-ICT

19	GP-5D-ICT-ED19	Gasket of fuel tank cock
20	GP-5D-ICT-ED20	Fuel pipe clamp
21	GP-5D-ICT-ED21	Fuel oil pipe
22	GP-5D-ICT-ED22	Fuel filter gasket
23	GP-5D-ICT-ED23	Fuel filter element
24	GP-5D-ICT-ED24	Fuel injector pump
25	GP-5D-ICT-ED25	High pressure fuel pipe (bosch injector)
26	GP-5D-ICT-ED26	Fuel oil filter
27	GP-5D-ICT-ED27	Fuel tank cap assembly
28	GP-5D-ICT-ED28	Fuel injector cap(china type only)

ENGINE DIAGRAM & PART LIST OF GP-5D-ICT

Lubrication and speed control system



ENGINE DIAGRAM & PART LIST OF GP-5D-ICT

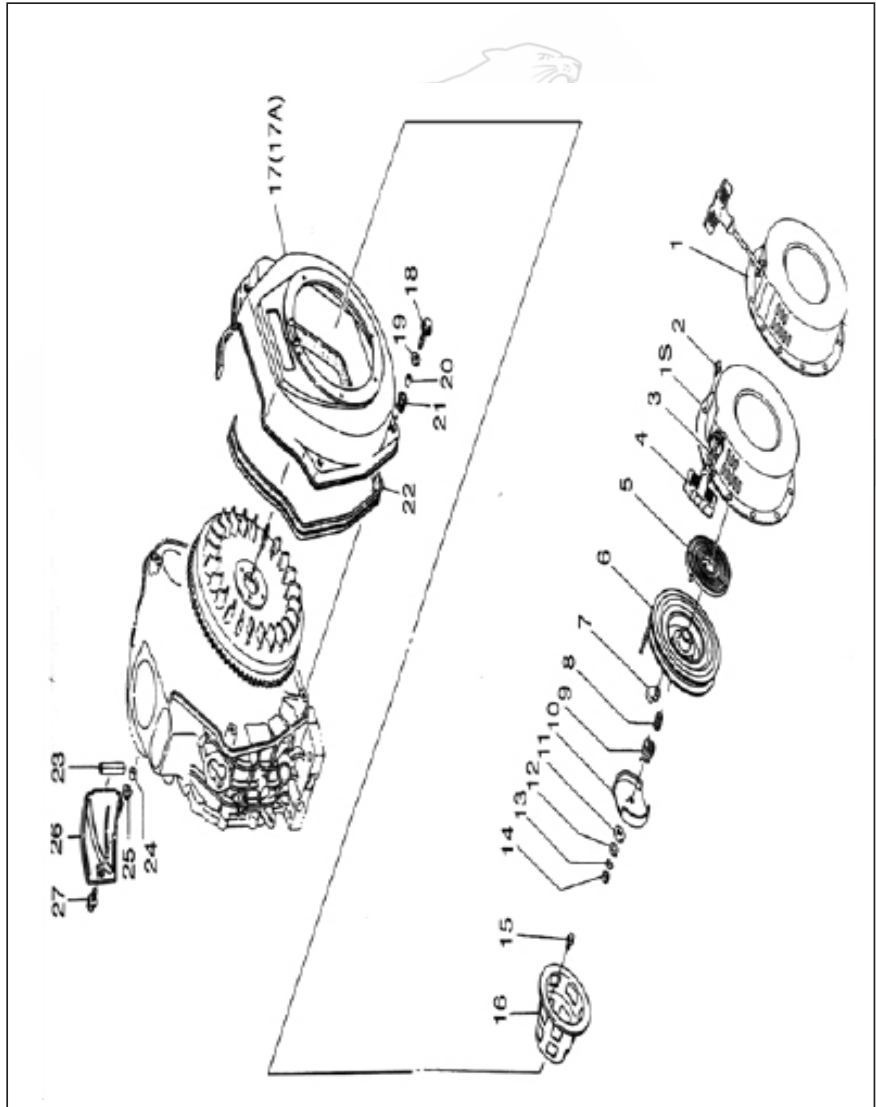
SL NO	PART NO	DESCRIPTION
1	GP-5D-ICT-EE01	Oil seal
2	GP-5D-ICT-EE02	Oil seal
3	GP-5D-ICT-EE03	Oil seal
4	GP-5D-ICT-EE04	Oil seal
5	GP-5D-ICT-EE05	Oil seal
6	GP-5D-ICT-EE06	Heterotypic Bolt
7	GP-5D-ICT-EE07	Oil pump cover
8	GP-5D-ICT-EE08	O ring
9	GP-5D-ICT-EE09	Oil Pump
10	GP-5D-ICT-EE10	pin
11	GP-5D-ICT-EE11	heterotypic Bolt
12	GP-5D-ICT-EE12	Oil filter cleaning element
13	GP-5D-ICT-EE13	Seal ring
14	GP-5D-ICT-EE14	Oil Guide
15	GP-5D-ICT-EE15	Oil pump driving gear
16	GP-5D-ICT-EE16	Fly block pin
17	GP-5D-ICT-EE17	Fly block
18	GP-5D-ICT-EE18	Governor fork tappet

ENGINE DIAGRAM & PART LIST OF GP-5D-ICT

19	GP-5D-ICT-EE19	Lever shaft gasket
20	GP-5D-ICT-EE20	Bearing
21	GP-5D-ICT-EE21	Fork lever assembly
22	GP-5D-ICT-EE22	Washer
23	GP-5D-ICT-EE23	Fuel controller
24	GP-5D-ICT-EE24	Handle bracket
25	GP-5D-ICT-EE25	Speed-control lever
26	GP-5D-ICT-EE26	Heterotypic Bolt
27	GP-5D-ICT-EE27	Heterotypic Bolt
28	GP-5D-ICT-EE28	included in the handel assembly,could not supply separately
29	GP-5D-ICT-EE29	Return spring
30	GP-5D-ICT-EE30	Return spring
31	GP-5D-ICT-EE31	Speed-control spring

ENGINE DIAGRAM & PART LIST OF GP-5D-ICT

Cooling and recoil starting system.

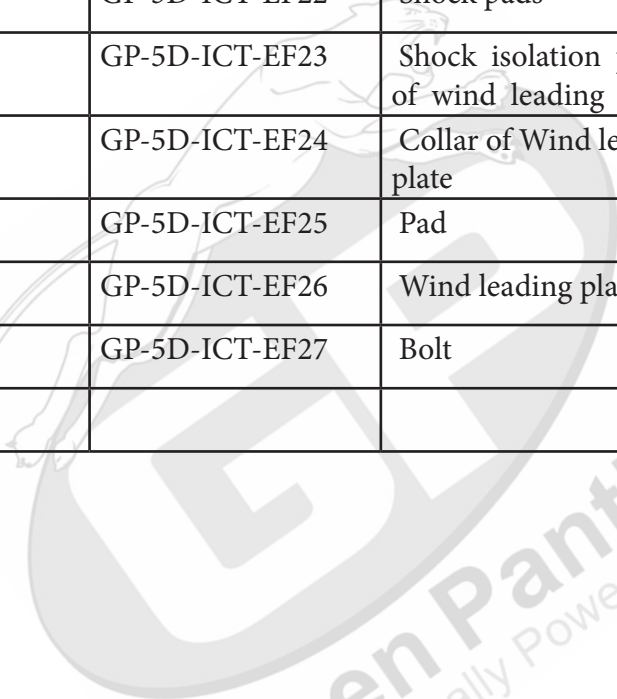


ENGINE DIAGRAM & PART LIST OF GP-5D-ICT

SL NO	PART NO	DESCRIPTION
1	GP-5D-ICT-EF01	Recoil case assembly
2	GP-5D-ICT-EF02	Bolt
3	GP-5D-ICT-EF03	Recoil starter rope
4	GP-5D-ICT-EF04	Recoil starter handle
5	GP-5D-ICT-EF05	Flat spiracle spring
6	GP-5D-ICT-EF06	Recoil reel
7	GP-5D-ICT-EF07	Starting claw
8	GP-5D-ICT-EF08	Helical spring
9	GP-5D-ICT-EF09	Torsional spring
10	GP-5D-ICT-EF10	Starting claw plate
11	GP-5D-ICT-EF11	Friction plate
12	GP-5D-ICT-EF12	Friction plate gasket
13	GP-5D-ICT-EF13	Spring washer
14	GP-5D-ICT-EF14	Nut
15	GP-5D-ICT-EF15	Bolt
16	GP-5D-ICT-EF16	Starter
17	GP-5D-ICT-EF17	Wind leading case welded
18	GP-5D-ICT-EF18	Bolt
19	GP-5D-ICT-EF19	washer

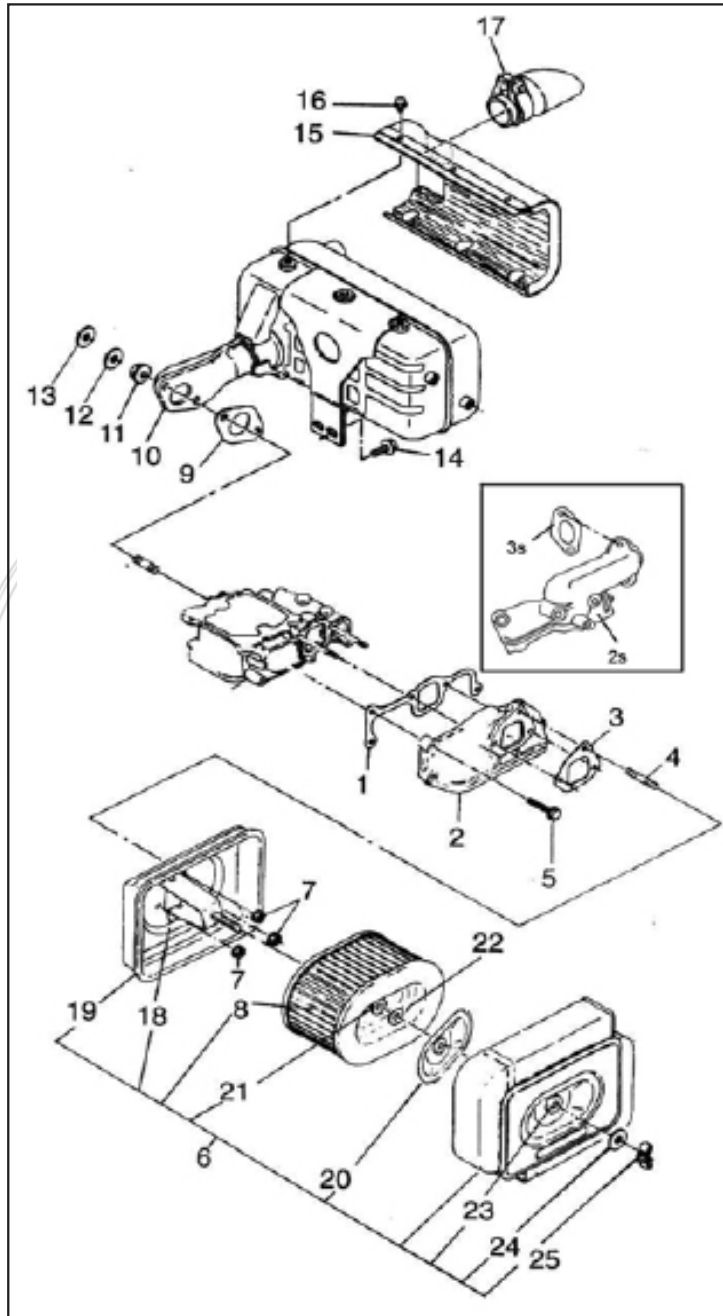
ENGINE DIAGRAM & PART LIST OF GP-5D-ICT

20	GP-5D-ICT-EF20	Collar of Wind leading case welded
21	GP-5D-ICT-EF21	Shock absorber
22	GP-5D-ICT-EF22	Shock pads
23	GP-5D-ICT-EF23	Shock isolation piece of wind leading plate
24	GP-5D-ICT-EF24	Collar of Wind leading plate
25	GP-5D-ICT-EF25	Pad
26	GP-5D-ICT-EF26	Wind leading plate
27	GP-5D-ICT-EF27	Bolt


Green Panther
Naturally Powerful

ENGINE DIAGRAM & PART LIST OF GP-5D-ICT

SUB PART OF ENGINE



ENGINE DIAGRAM & PART LIST OF GP-5D-ICT

SL NO	PART NO	DESCRIPTION
1	GP-5D-ICT-EG01	Intake pipe gasket
2	GP-5D-ICT-EG02	Intake pipe
3	GP-5D-ICT-EG03	Air cleaner gasket
4	GP-5D-ICT-EG04	fasten bolt for air cleaner
5	GP-5D-ICT-EG05	Heterotypic bolt
6	GP-5D-ICT-EG06	Air filter assembly
7	GP-5D-ICT-EG07	Heterotypic Nut
8	GP-5D-ICT-EG08	Air filter element
9	GP-5D-ICT-EG09	Muffler gasket
10	GP-5D-ICT-EG10	Muffler assembly
11	GP-5D-ICT-EG11	Flat washer
12	GP-5D-ICT-EG12	Spring washer
13	GP-5D-ICT-EG13	Nut
14	GP-5D-ICT-EG14	heterotypic Bolt
15	GP-5D-ICT-EG15	Muffler screen cover
16	GP-5D-ICT-EG16	Bolt
17	GP-5D-ICT-EG17	Muffler tail pipe
18	GP-5D-ICT-EG18	Sealing ring II of shock proof

ENGINE DIAGRAM & PART LIST OF GP-5D-ICT

19	GP-5D-ICT-EG19	Bottom case assembly of Air Cleaner
20	GP-5D-ICT-EG20	Sealing ring II of shock proof
21	GP-5D-ICT-EG21	Air filter shock absorber
22	GP-5D-ICT-EG22	Heterotypic nut
23	GP-5D-ICT-EG23	NA
24	GP-5D-ICT-EG24	Washer
25	GP-5D-ICT-EG25	butterfly nut



Green Panther
Naturally Powerful

1st Free Service Coupon

ISO 9001-2015
CERTIFIED COMPANY

FREE SERVICE COUPON (30 Days / 30 hrs (Which ever is earlier))

Model
GP-5D-ICT INTERCULTIVATOR/POWER WEEDER

Serial Number

PDI Date

Service No.

Purchase bill no. Date

Dealer's Office Seal & Signature

Customer Signature.....

Conditions: Operations listed have been performed to my entire satisfaction without any labour charges. Only consumables were charged.

WARRANTY AND FREE SERVICE COUPON

agriculture | horticulture | sericulture | plantations | forest | garden | healthcare

2nd Free Service Coupon

ISO 9001-2015
CERTIFIED COMPANY

FREE SERVICE COUPON (60 Days / 60 hrs (Which ever is earlier))

Model
GP-5D-ICT INTERCULTIVATOR/POWER WEEDER

Serial Number

PDI Date

Service No.

Purchase bill no. Date

Dealer's Office Seal & Signature

Customer Signature.....

Conditions: Operations listed have been performed to my entire satisfaction without any labour charges. Only consumables were charged.

WARRANTY AND FREE SERVICE COUPON

agriculture | horticulture | sericulture | plantations | forest | garden | healthcare

3rd Free Service Coupon

ISO 9001-2015
CERTIFIED COMPANY

FREE SERVICE COUPON (90 Days / 120 hrs (Which ever is earlier))

Model
GP-5D-ICT INTERCULTIVATOR/POWER WEEDER

Serial Number

PDI Date

Service No.

Purchase bill no. Date

Dealer's Office Seal & Signature

Customer Signature.....

Conditions: Operations listed have been performed to my entire satisfaction without any labour charges. Only consumables were charged.

WARRANTY AND FREE SERVICE COUPON

agriculture | horticulture | sericulture | plantations | forest | garden | healthcare

1. **LIMITED WARRANTY PERIOD** : For a period of six months from the date of Sale / delivery of the product which ever is earlier. 2. **LIMITED WARRANTY OBLIGATION** : Replacement of defective part(s) by authorized dealer are free of charges. If found defective by reasons of defective material / poor workmanship, parts will be replaced and there will be no value re-imbusement. 3. **TERMS & CONDITIONS** : a. Claims under warranty will be accepted on submission of Warranty Card duly filled and stamped by authorized dealer together with the original purchase document. : b. Shipping / transportation / Incidental charges incurred in replacing defective parts under warranty shall be borne by the purchaser.

WARRANTY null & void if

- (i) Lack of maintenance, (ii) Incorrect use of the machine or tampering, (iii) Use of non-genuine spare parts, (iv) Usage of acids, solvents, or any flammable materials, (v) Non-usage of filter water / clear water / soft water & using water above 40°C temperature, (vi) While using the pressure washers to draw water which is contaminated with dust & solvents (eg. paint thinners, gasoline, oil, etc.), (vii) Repair done by unauthorized service people, (viii) Those parts subject to wear & tear due to normal operations and plastic parts, rubber items etc, (ix) Loose connections, faulty electrical fixtures & fluctuations in power supply.
- Should any failure occur during or after the warranty period, customer does not have the right to interrupt payment / price discount.
 - Incidental or consequential damages like inconvenience commercial loss, loss of tie, mental agony etc.
 - Loss of any nature due to operation or non-operation is not covered under warranty.
 - All free service are at Dealer's service point only.
 - Warranty ceases if service is not done periodically.
 - The attached card should be completed and returned to Ratnagiri Impex Pvt. Ltd. for registration immediately after sale / delivery.
 - The warranty is void unless you register the warranty card with Ratnagiri Impex Pvt. Ltd.
 - The decision of Ratnagiri Impex Pvt. Ltd., in settling the warranty is final in all respects.
 - All disputes are subject to Bangalore Courts Jurisdiction

1. **LIMITED WARRANTY PERIOD** : For a period of six months from the date of Sale / delivery of the product which ever is earlier. 2. **LIMITED WARRANTY OBLIGATION** : Replacement of defective part(s) by authorized dealer are free of charges. If found defective by reasons of defective material / poor workmanship, parts will be replaced and there will be no value re-imbusement. 3. **TERMS & CONDITIONS** : a. Claims under warranty will be accepted on submission of Warranty Card duly filled and stamped by authorized dealer together with the original purchase document. : b. Shipping / transportation / Incidental charges incurred in replacing defective parts under warranty shall be borne by the purchaser.

WARRANTY null & void if

- (i) Lack of maintenance, (ii) Incorrect use of the machine or tampering, (iii) Use of non-genuine spare parts, (iv) Usage of acids, solvents, or any flammable materials, (v) Non-usage of filter water / clear water / soft water & using water above 40°C temperature, (vi) While using the pressure washers to draw water which is contaminated with dust & solvents (eg. paint thinners, gasoline, oil, etc.), (vii) Repair done by unauthorized service people, (viii) Those parts subject to wear & tear due to normal operations and plastic parts, rubber items etc, (ix) Loose connections, faulty electrical fixtures & fluctuations in power supply.
- Should any failure occur during or after the warranty period, customer does not have the right to interrupt payment / price discount.
 - Incidental or consequential damages like inconvenience commercial loss, loss of tie, mental agony etc.
 - Loss of any nature due to operation or non-operation is not covered under warranty.
 - All free service are at Dealer's service point only.
 - Warranty ceases if service is not done periodically.
 - The attached card should be completed and returned to Ratnagiri Impex Pvt. Ltd. for registration immediately after sale / delivery.
 - The warranty is void unless you register the warranty card with Ratnagiri Impex Pvt. Ltd.
 - The decision of Ratnagiri Impex Pvt. Ltd., in settling the warranty is final in all respects.
 - All disputes are subject to Bangalore Courts Jurisdiction

1. **LIMITED WARRANTY PERIOD** : For a period of six months from the date of Sale / delivery of the product which ever is earlier. 2. **LIMITED WARRANTY OBLIGATION** : Replacement of defective part(s) by authorized dealer are free of charges. If found defective by reasons of defective material / poor workmanship, parts will be replaced and there will be no value re-imbusement. 3. **TERMS & CONDITIONS** : a. Claims under warranty will be accepted on submission of Warranty Card duly filled and stamped by authorized dealer together with the original purchase document. : b. Shipping / transportation / Incidental charges incurred in replacing defective parts under warranty shall be borne by the purchaser.

WARRANTY null & void if

- (i) Lack of maintenance, (ii) Incorrect use of the machine or tampering, (iii) Use of non-genuine spare parts, (iv) Usage of acids, solvents, or any flammable materials, (v) Non-usage of filter water / clear water / soft water & using water above 40°C temperature, (vi) While using the pressure washers to draw water which is contaminated with dust & solvents (eg. paint thinners, gasoline, oil, etc.), (vii) Repair done by unauthorized service people, (viii) Those parts subject to wear & tear due to normal operations and plastic parts, rubber items etc, (ix) Loose connections, faulty electrical fixtures & fluctuations in power supply.
- Should any failure occur during or after the warranty period, customer does not have the right to interrupt payment / price discount.
 - Incidental or consequential damages like inconvenience commercial loss, loss of tie, mental agony etc.
 - Loss of any nature due to operation or non-operation is not covered under warranty.
 - All free service are at Dealer's service point only.
 - Warranty ceases if service is not done periodically.
 - The attached card should be completed and returned to Ratnagiri Impex Pvt. Ltd. for registration immediately after sale / delivery.
 - The warranty is void unless you register the warranty card with Ratnagiri Impex Pvt. Ltd.
 - The decision of Ratnagiri Impex Pvt. Ltd., in settling the warranty is final in all respects.
 - All disputes are subject to Bangalore Courts Jurisdiction

Warranty Card

CUSTOMER COPY



Purchaser's Name & Address

Date of Delivery

Product Name

GP-5D-ICT INTERCULTIVATOR/POWER WEEDER

Dealer's Office Seal

Product Serial No.

Dealer Sign _____

Customer Sign. _____

Invoice / DN No.

I/We accept the terms and conditions of Warranty as in the Warranty Card.

Warranty Card

DEALER'S COPY

Purchaser's Name & Address

Date of Delivery

Product Name

GP-5D-ICT INTERCULTIVATOR/POWER WEEDER

Dealer's Office Seal

Product Serial No.

Dealer Sign _____

Customer Sign. _____

Invoice / DN No.

I/We accept the terms and conditions of Warranty as in the Warranty Card.

Warranty Card

COMPANY COPY

Purchaser's Name & Address

Date of Delivery

Product Name

GP-5D-ICT INTERCULTIVATOR/POWER WEEDER

Dealer's Office Seal

Product Serial No.

Dealer Sign _____

Customer Sign. _____

Invoice / DN No.

I/We accept the terms and conditions of Warranty as in the Warranty Card.

Do's & Don'ts

- Always read the instruction manual supplied along with the equipments and understand the correct installation and operating procedures before attempting to use the equipments.
- It is important to use the personal protection equipments such as head helmet with visor, ear defenders, goggles, safety gloves, cut resistant shoes, trousers and jackets while operating potentially dangerous machines.
- Avoid untrained persons using the equipments. Children must not be allowed to handle these equipments.
- Always use genuine spares and accessories in repairs and usage to derive maximum life of the equipments.
- Always keep the equipments in good working condition to minimise loss of output as well as to reduce the pollution and save the environment.
- Do not use the machine within range of persons unless they wear protective clothing.
- Do not operate the machine when fatigued or under the influence of alcohol or drugs.
- For more query kindly contact for our Service Center/Dealer/ franchise



Green Panther
Naturally Powerful

GREEN PANTHER

GP-5D-ICT

INTERCULTIVATOR/POWER WEEDER

Imported & Marketed by:
RATNAGIRI IMPEX PVT LTD
Annapurna House, #1/1G, 7th Cross, New Guddadahalli
Mysore Road, Bangalore-560 026
Customer Care: 1800-425-3036
email: info@ratnagiriimpex.com



Marketed by:
**ratnagiri
impex**
BRINGING YOU THE FUTURE... NOW

www.ratnagiriimpex.com

AN ISO 9001:2015 CERTIFIED COMPANY