



GP-2TFF **Mini Fogger**



USER MANUAL



Professional Fogger

Note: Please read the following instructions before use. This book contains important information on SAFETY, ASSEMBLY, OPERATION & DISCLAIMER: DUE TO CONSTANT UPGRADATION, FEATURES AND SPECIFICATIONS ARE SUBJECT TO CHANGE WITHOUT NOTICE

MINI FOGGING MACHINE

1. Fill the chemical tank-① with 2L diesel and 30-50cc pesticide and then dilute them.
2. Put the full of water in the coil-cooling water tank-② and fix the liquefied butane gas-④ onto the screen smoke gadget.
3. Check the coil for smoke screen-⑨ which is available (coilclogging) by turning the smoke screen & cooling control lever-⑧ at the cooling position and then operating the cooling water pump-③.
4. After opening the gas control lever-⑤, checking its gas ignition and pushing the ignition switch-⑥ for its ignition, turn the Smoke screen & cooling control lever-⑧ at the smoke screen position and then clench and unclench the smoke screen pump lever-⑦ with hand continuously. After that, the smoke screen is activated.

(The coil will be clogged if you does not operating the smoke screen pump lever and you leave it in the condition of the ignition.)

5. After finishing the smoke screen work, turn the Smoke screen & cooling control lever-⑧ at the cooling position and close the gas control lever-⑤ immediately. When the heat remains on the coil for smoking screen-⑨, you should operate the cooling water pump-③ to clean the coil for smoking screen-⑨ that prevent the coil from being clogged and guarantee its long-term use.

Caution:

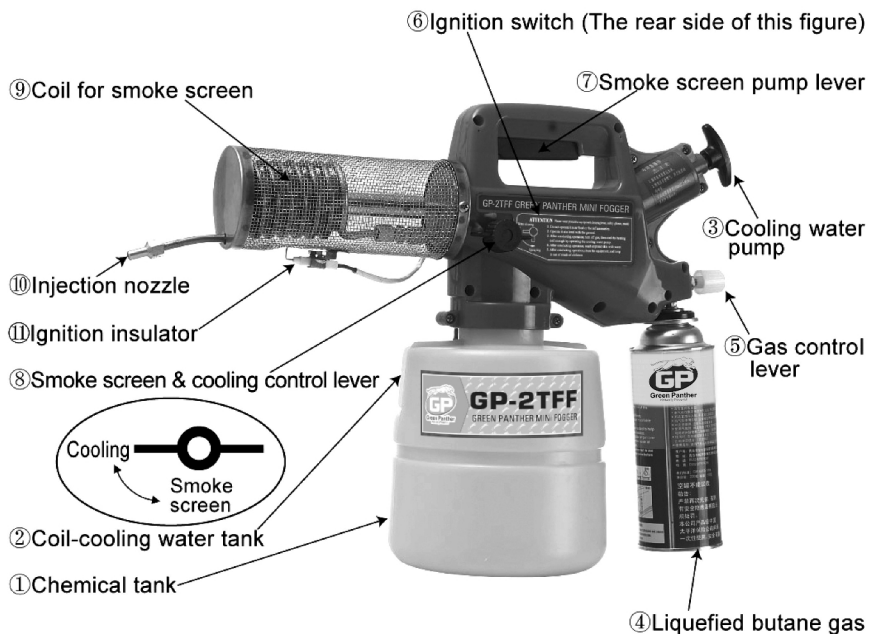
- After use, remove the liquefied butane gas from the gadget.
- After use, remove the chemical tank from the gadget in case of long-term keeping.
- Maintain the interval as 8mm against the ignition insulator.
- When fixing the butane gas onto the screen smoke gadget, fit the gas holder into the gas fixation bracket projection and tum it right to fix it strongly.

Warning!:

- When the coil is clogged, you must stop working.
- Overuse causes damage on any other parts.
- Use diesel only. (Never use kerosene or gasoline.)



GP-2TFF MINI FOGGER DIAGRAM

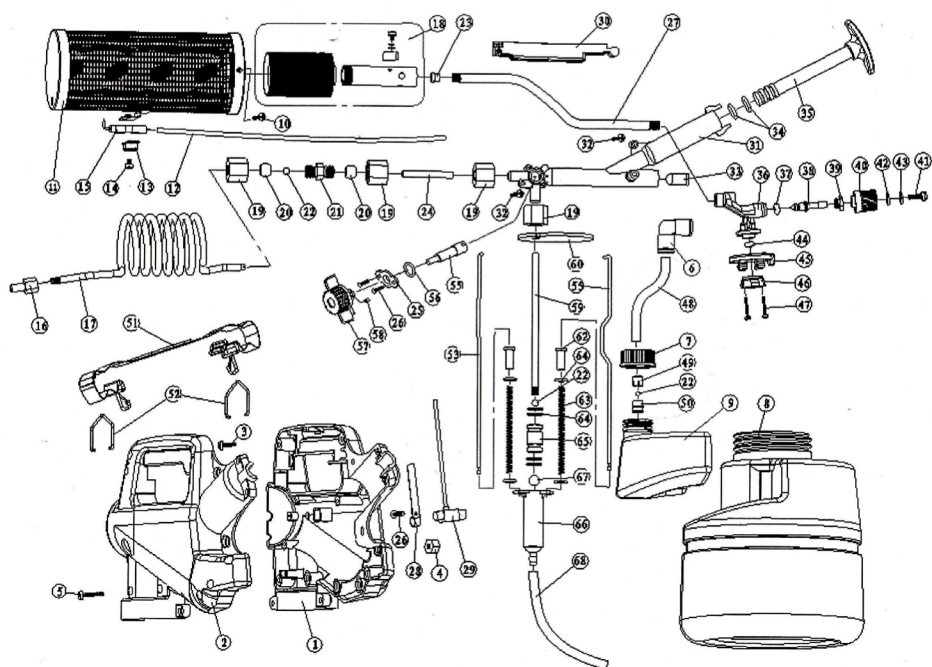


TECHNICAL SPECIFICATION

Model	GP-2TFF
Tank Capacity	2L
Fuel	Butane Gas
Particle	5-30 μ m
Starting Method	Piezoelectric ceramic ignitor
Net weight	1.4 kg
Packing Dimension	50x19x36cm



SPARE PARTS DIAGRAM & LIST OF GP-2TFF MINI FOGGER



NO:	Part No.	Description
1	GP-2TFF-M01	right cover
2	GP-2TFF-M02	left cover
3	GP-2TFF-M03	cross recessed pan head screw
4	GP-2TFF-M04	hex head nut
5	GP-2TFF-M05	cross recessed pan head screw
6	GP-2TFF-M06	90degree bend section header
7	GP-2TFF-M07	CAP
8	GP-2TFF-M08	medicine chest
9	GP-2TFF-M09	cleaning bottle
10	GP-2TFF-M10	cross recessed tapping screws

NO:	Part No.	Description
11	GP-2TFF-M11	shroud assembly/guard assy
12	GP-2TFF-M12	insulating tube
13	GP-2TFF-M13	porcelain pin platen
14	GP-2TFF-M14	cross slot bulk of screw
15	GP-2TFF-M15	porcelain neddle assmbly
16	GP-2TFF-M16	sprinkler head
17	GP-2TFF-M17	spout/nozzle
18	GP-2TFF-M18	the burner assmbly
19	GP-2TFF-M19	nozzle joints
20	GP-2TFF-M20	oil so that the head
21	GP-2TFF-M21	seat
22	GP-2TFF-M22	stainless steel ball
23	GP-2TFF-M23	GAS NOZZLE
24	GP-2TFF-M24	connecting pipe
25	GP-2TFF-M25	platen
26	GP-2TFF-M26	head tapping screws
27	GP-2TFF-M27	trachea
28	GP-2TFF-M28	copper skin
29	GP-2TFF-M29	ignition
30	GP-2TFF-M30	handle
31	GP-2TFF-M31	valve
32	GP-2TFF-M32	cross recessed pan head tappingscrews
33	GP-2TFF-M33	plug
34	GP-2TFF-M34	o-ring outer
35	GP-2TFF-M35	piston rod
36	GP-2TFF-M36	valve body
37	GP-2TFF-M37	o-ring
38	GP-2TFF-M38	stem
39	GP-2TFF-M39	pressed cap



NO:	Part No.	Description
40	GP-2TFF-M40	Inob
41	GP-2TFF-M41	cross recessed pan head screw
42	GP-2TFF-M42	spring washer
43	GP-2TFF-M43	plat washer
44	GP-2TFF-M44	O-ring
45	GP-2TFF-M45	locking cover
46	GP-2TFF-M46	holder
47	GP-2TFF-M47	cross recessed pan head screw
48	GP-2TFF-M48	cleaning tube
49	GP-2TFF-M49	cleaning tube gear block
50	GP-2TFF-M50	cleaning tube set
51	GP-2TFF-M51	strap group
52	GP-2TFF-M52	strap hook
53	GP-2TFF-M53	right rod
54	GP-2TFF-M54	left rod
55	GP-2TFF-M55	spool
56	GP-2TFF-M56	o-ring outer
57	GP-2TFF-M57	commutation knob
58	GP-2TFF-M58	hexagon socket set screw
59	GP-2TFF-M59	suction drug possession
60	GP-2TFF-M60	medcine cabinet gasket
61	GP-2TFF-M61	push tube
62	GP-2TFF-M62	return spring
63	GP-2TFF-M63	flat washer 3
64	GP-2TFF-M64	sealing ring
65	GP-2TFF-M65	piston
66	GP-2TFF-M66	bottom valve
67	GP-2TFF-M67	9.52 stainless steel ball
68	GP-2TFF-M68	into drug pipe



1st Free Service Coupon

AN ISO 9001:2015 CERTIFIED COMPANY

FREE SERVICE COUPON (30 Days / 20 hrs (Which ever is earlier))

Model
GP-2TFF MINI FOGGER

PDI Date

Service No.

Purchase bill no. Date

Dealer's Office Seal & Signature

Serial Number

Customer Signature.....

Conditions: Operations listed have been performed to my entire satisfaction without any labour charges. Only consumables were charged.

WARRANTY AND FREE SERVICE COUPON

Bungalow | Hotels | Gardens | Stadium | Resorts | Lawns | Parks | Golf Course

2nd Free Service Coupon

AN ISO 9001:2015 CERTIFIED COMPANY

FREE SERVICE COUPON (30 Days / 20 hrs (Which ever is earlier))

Model
GP-2TFF MINI FOGGER

PDI Date

Service No.

Purchase bill no. Date

Dealer's Office Seal & Signature

Serial Number

Customer Signature.....

Conditions: Operations listed have been performed to my entire satisfaction without any labour charges. Only consumables were charged.

WARRANTY AND FREE SERVICE COUPON

Bungalow | Hotels | Gardens | Stadium | Resorts | Lawns | Parks | Golf Course

3rd Free Service Coupon

AN ISO 9001:2015 CERTIFIED COMPANY

FREE SERVICE COUPON (30 Days / 20 hrs (Which ever is earlier))

Model
GP-2TFF MINI FOGGER

PDI Date

Service No.

Purchase bill no. Date

Dealer's Office Seal & Signature

Serial Number

Customer Signature.....

Conditions: Operations listed have been performed to my entire satisfaction without any labour charges. Only consumables were charged.

WARRANTY AND FREE SERVICE COUPON

Bungalow | Hotels | Gardens | Stadium | Resorts | Lawns | Parks | Golf Course

1. **LIMITED WARRANTY PERIOD** : For a period of six months from the date of Sale / delivery of the product which ever is earlier. 2. **LIMITED WARRANTY OBLIGATION** : Replacement of defective part(s) by authorized dealer are free of charges. If found defective by reasons of defective material / poor workmanship, parts will be replaced and there will be no value re-imbursement. 3. **TERMS & CONDITIONS** : a. Claims under warranty will be accepted on submission of Warranty Card duly filled and stamped by authorized dealer together with the original purchase document. : b. Shipping / transportation / Incidental charges incurred in replacing defective parts under warranty shall be borne by the purchaser.

WARRANTY null & void if

- (i) Lack of maintenance, (ii) Incorrect use of the machine or tampering, (iii) Use of non-genuine spare parts, (iv) Usage of acids, solvents, or any flammable materials, (v) Non-usage of filter water / clear water / soft water & using water above 40°C temperature, (vi) While using the pressure washers to draw water which is contaminated with dust & solvents (eg. paint thinners, gasoline, oil, etc.), (vii) Repair done by unauthorized service people, (viii) Those parts subject to wear & tear due to normal operations and plastic parts, rubber items etc, (ix) Loose connections, faulty electrical fixtures & fluctuations in power supply.
- 4. Should any failure occur during or after the warranty period, customer does not have the right to interrupt payment / price discount.
- 5. Incidental or consequential damages like inconvenience commercial loss, loss of tie, mental agony etc.
- 6. Loss of any nature due to operation or non-operation is not covered under warranty.
- 7. All free service are at Dealer's service point only.
- 8. Warranty ceases if service is not done periodically.
- 9. The attached card should be completed and returned to Ratnagiri Impex Pvt. Ltd. for registration immediately after sale / delivery.
- 10. The warranty is void unless you register the warranty card with Ratnagiri Impex Pvt. Ltd.
- 11. The decision of Ratnagiri Impex Pvt. Ltd., in settling the warranty is final in all respects.
- 12. All disputes are subject to Bangalore Courts Jurisdiction

1. **LIMITED WARRANTY PERIOD** : For a period of six months from the date of Sale / delivery of the product which ever is earlier. 2. **LIMITED WARRANTY OBLIGATION** : Replacement of defective part(s) by authorized dealer are free of charges. If found defective by reasons of defective material / poor workmanship, parts will be replaced and there will be no value re-imbursement. 3. **TERMS & CONDITIONS** : a. Claims under warranty will be accepted on submission of Warranty Card duly filled and stamped by authorized dealer together with the original purchase document. : b. Shipping / transportation / Incidental charges incurred in replacing defective parts under warranty shall be borne by the purchaser.

WARRANTY null & void if

- (i) Lack of maintenance, (ii) Incorrect use of the machine or tampering, (iii) Use of non-genuine spare parts, (iv) Usage of acids, solvents, or any flammable materials, (v) Non-usage of filter water / clear water / soft water & using water above 40°C temperature, (vi) While using the pressure washers to draw water which is contaminated with dust & solvents (eg. paint thinners, gasoline, oil, etc.), (vii) Repair done by unauthorized service people, (viii) Those parts subject to wear & tear due to normal operations and plastic parts, rubber items etc, (ix) Loose connections, faulty electrical fixtures & fluctuations in power supply.
- 4. Should any failure occur during or after the warranty period, customer does not have the right to interrupt payment / price discount.
- 5. Incidental or consequential damages like inconvenience commercial loss, loss of tie, mental agony etc.
- 6. Loss of any nature due to operation or non-operation is not covered under warranty.
- 7. All free service are at Dealer's service point only.
- 8. Warranty ceases if service is not done periodically.
- 9. The attached card should be completed and returned to Ratnagiri Impex Pvt. Ltd. for registration immediately after sale / delivery.
- 10. The warranty is void unless you register the warranty card with Ratnagiri Impex Pvt. Ltd.
- 11. The decision of Ratnagiri Impex Pvt. Ltd., in settling the warranty is final in all respects.
- 12. All disputes are subject to Bangalore Courts Jurisdiction

1. **LIMITED WARRANTY PERIOD** : For a period of six months from the date of Sale / delivery of the product which ever is earlier. 2. **LIMITED WARRANTY OBLIGATION** : Replacement of defective part(s) by authorized dealer are free of charges. If found defective by reasons of defective material / poor workmanship, parts will be replaced and there will be no value re-imbursement. 3. **TERMS & CONDITIONS** : a. Claims under warranty will be accepted on submission of Warranty Card duly filled and stamped by authorized dealer together with the original purchase document. : b. Shipping / transportation / Incidental charges incurred in replacing defective parts under warranty shall be borne by the purchaser.

WARRANTY null & void if

- (i) Lack of maintenance, (ii) Incorrect use of the machine or tampering, (iii) Use of non-genuine spare parts, (iv) Usage of acids, solvents, or any flammable materials, (v) Non-usage of filter water / clear water / soft water & using water above 40°C temperature, (vi) While using the pressure washers to draw water which is contaminated with dust & solvents (eg. paint thinners, gasoline, oil, etc.), (vii) Repair done by unauthorized service people, (viii) Those parts subject to wear & tear due to normal operations and plastic parts, rubber items etc, (ix) Loose connections, faulty electrical fixtures & fluctuations in power supply.
- 4. Should any failure occur during or after the warranty period, customer does not have the right to interrupt payment / price discount.
- 5. Incidental or consequential damages like inconvenience commercial loss, loss of tie, mental agony etc.
- 6. Loss of any nature due to operation or non-operation is not covered under warranty.
- 7. All free service are at Dealer's service point only.
- 8. Warranty ceases if service is not done periodically.
- 9. The attached card should be completed and returned to Ratnagiri Impex Pvt. Ltd. for registration immediately after sale / delivery.
- 10. The warranty is void unless you register the warranty card with Ratnagiri Impex Pvt. Ltd.
- 11. The decision of Ratnagiri Impex Pvt. Ltd., in settling the warranty is final in all respects.
- 12. All disputes are subject to Bangalore Courts Jurisdiction

Warranty Card

CUSTOMER COPY



Purchaser's Name & Address

Product Name

GP-2TFF MINI FOGGER

Product Serial No.

Invoice / DN No.

Date of Delivery

Dealer's Office Seal

Dealer Sign _____

Customer Sign. _____

I/We accept the terms and conditions of Warranty as in the Warranty Card.



Warranty Card

DEALER'S COPY

Purchaser's Name & Address

Product Name

GP-2TFF MINI FOGGER

Product Serial No.

Invoice / DN No.

Date of Delivery

Dealer's Office Seal

Dealer Sign _____

Customer Sign. _____

I/We accept the terms and conditions of Warranty as in the Warranty Card.



Warranty Card

COMPANY COPY

Purchaser's Name & Address

Product Name

GP-2TFF MINI FOGGER

Product Serial No.

Invoice / DN No.

Date of Delivery

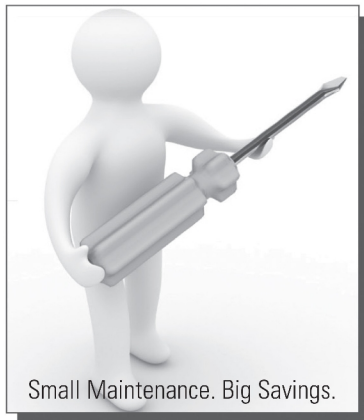
Dealer's Office Seal

Dealer Sign _____

Customer Sign. _____

I/We accept the terms and conditions of Warranty as in the Warranty Card.





Do's & Don'ts

- Always read the instruction manual supplied along with the equipments and understand the correct installation and operating procedures before attempting to use the equipments.
- It is important to use the personal protection equipments such as head helmet with visor, ear defenders, goggles, safety gloves, cut resistant shoes, trousers and jackets while operating potentially dangerous machines.
- Avoid untrained persons using the equipments. Children must not be allowed to handle these equipments.
- Always use genuine spares and accessories in repairs and usage to derive maximum life of the equipments.
- Always keep the equipments in good working condition to minimise loss of output as well as to reduce the pollution and save the environment.
- Do not use the machine within range of persons unless they wear protective clothing.
- Do not operate the machine when fatigued or under the influence of alcohol or drugs.
- For more query kindly contact for our Service Center/Dealer/ franchise





IMPORTED AND MARKETING BY:

RATNAGIRI IMPEX PVT LTD

Annapurna House, #1/1G, 7th Cross, New Guddadahalli

Mysore Road, Bangalore-560 026

Customer Care: 1800-425-3036

email: info@ratnagiriimpex.com

www.ratnagiriimpex.com



**ratnagiri[®]
impex**

BRINGING YOU THE FUTURE... NOW

AN ISO 9001:2015 CERTIFIED COMPANY