

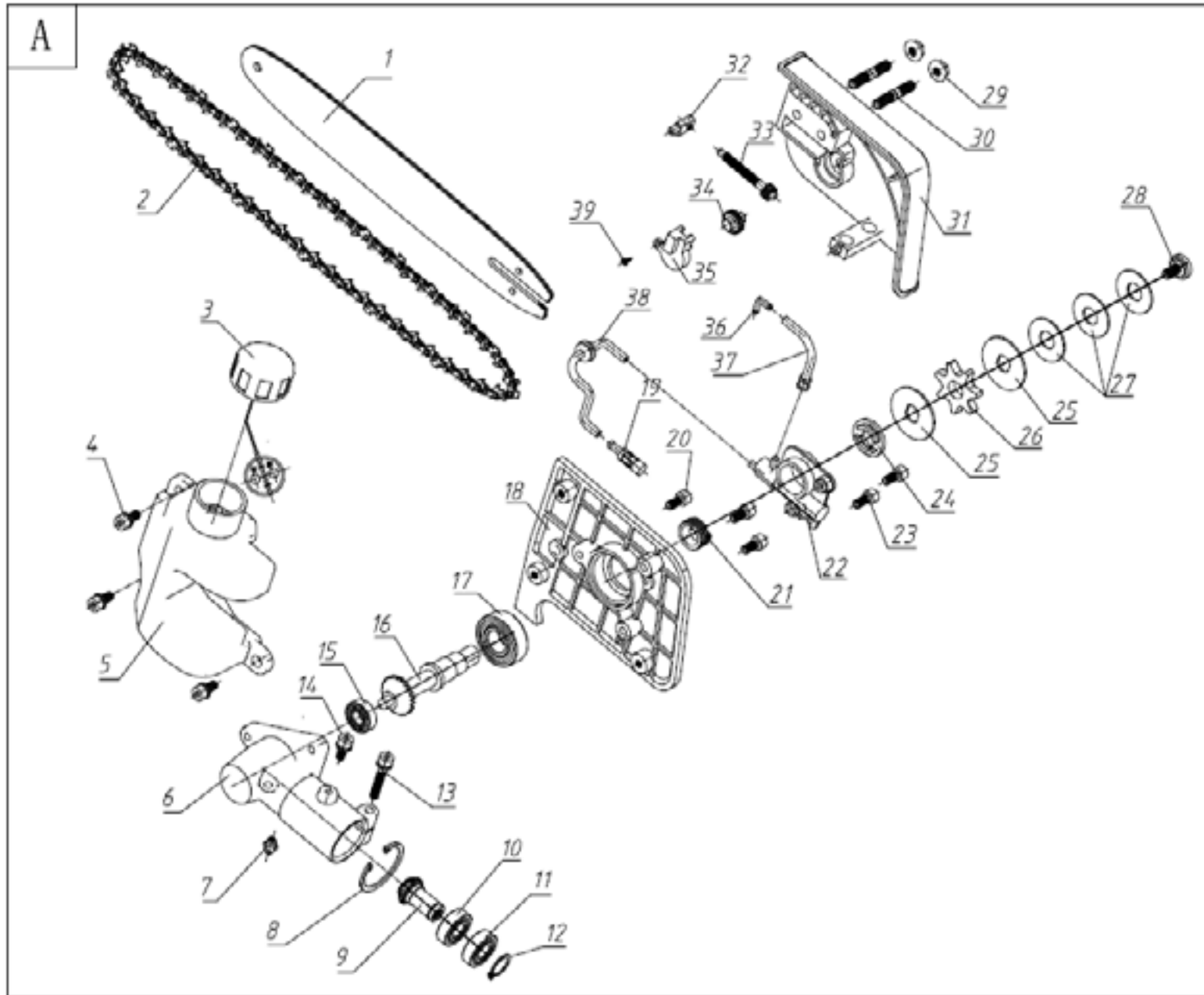
***KASEI***

Advanced Technology

**KASEI POLE PRUNER  
KZ-2700PPH**

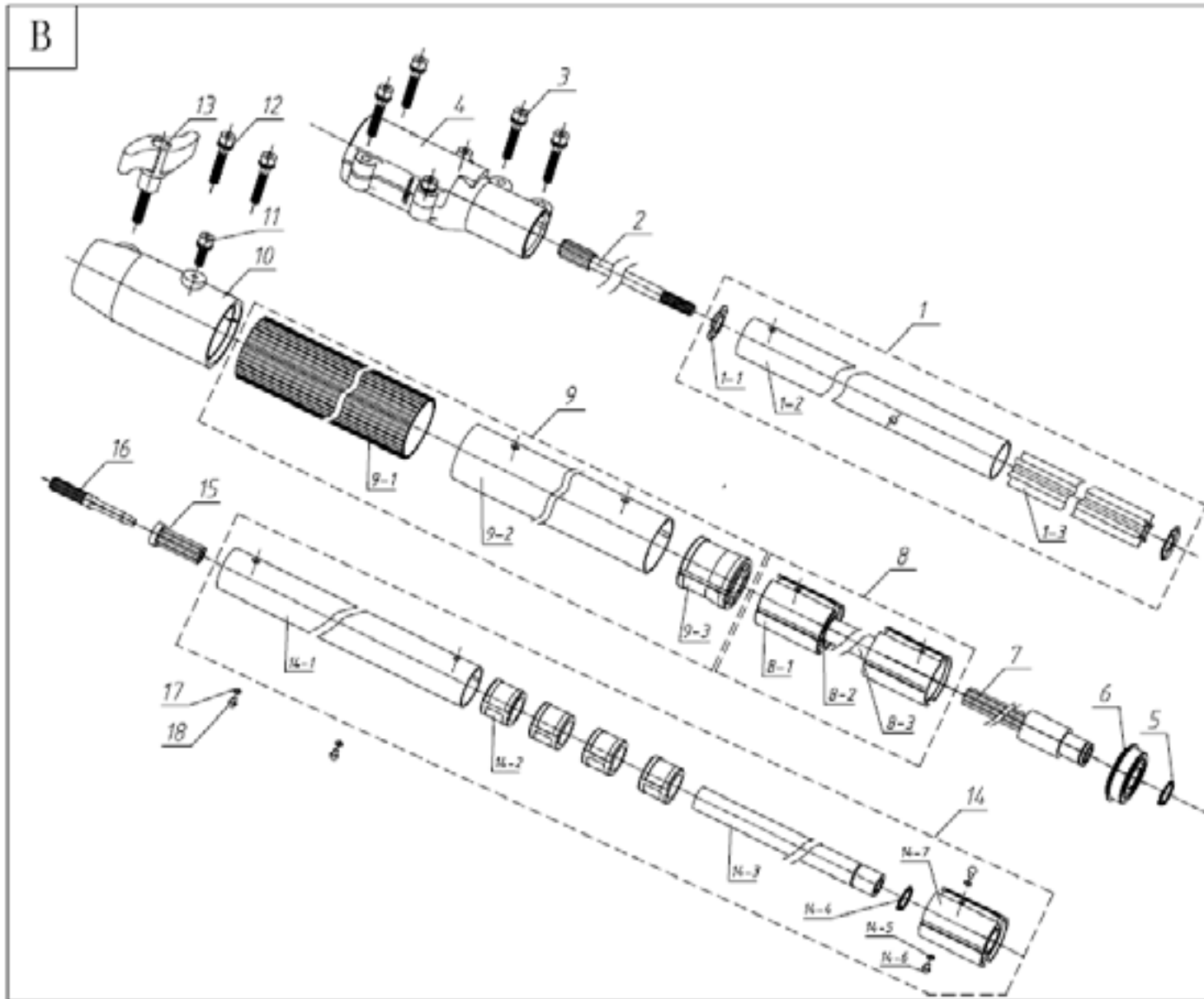


# CUTTER HEAD - A



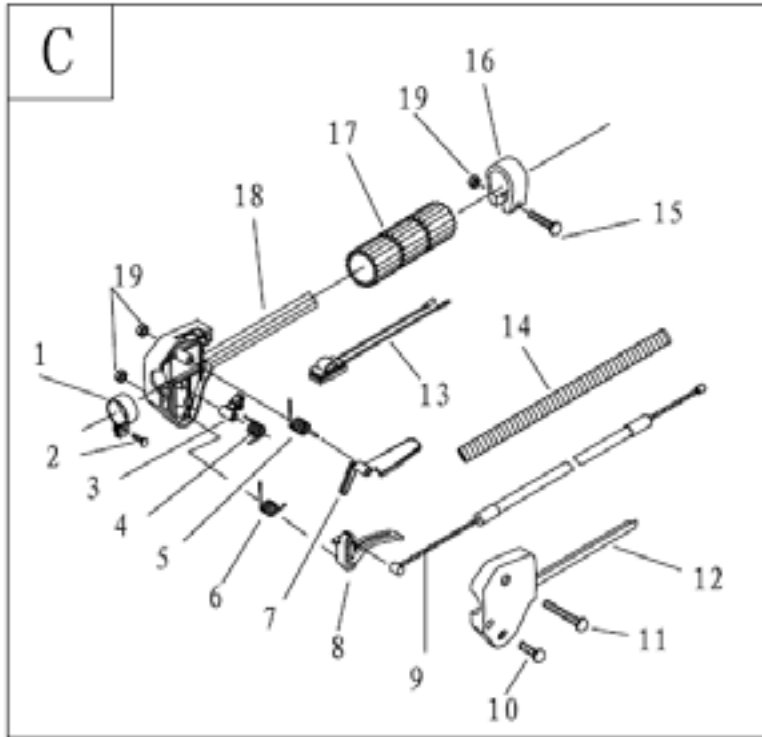
SL NO	PART NO	DESCRIPTION	SL NO	PART NO	DESCRIPTION
A	KZ-2700PPH-TA	CUTTER HEAD			
1	KZ-2700PPH-TA01	10" Guide Board	21	KZ-2700PPH-TA21	Worm
2	KZ-2700PPH-TA02	Chain	22	KZ-2700PPH-TA22	Worn thee1 ass' y
3	KZ-2700PPH-TA03	Tank Cap Ass' Y	23	KZ-2700PPH-TA23	Screw
4	KZ-2700PPH-TA04	Bolt	24	KZ-2700PPH-TA24	Pusher
5	KZ-2700PPH-TA05	Oil Tank	25	KZ-2700PPH-TA25	Baffle
6	KZ-2700PPH-TA06	Gear Case	26	KZ-2700PPH-TA26	Chain wheel
7	KZ-2700PPH-TA07	Oil Cup	27	KZ-2700PPH-TA27	Washer
8	KZ-2700PPH-TA08	Stop Ring	28	KZ-2700PPH-TA28	Screw
9	KZ-2700PPH-TA09	Left Pinion	29	KZ-2700PPH-TA29	Nut
10	KZ-2700PPH-TA10	Bearing	30	KZ-2700PPH-TA30	Bolt
11	KZ-2700PPH-TA11	Bearing	31	KZ-2700PPH-TA31	Cover Borad Corp
12	KZ-2700PPH-TA12	Stop Ring	32	KZ-2700PPH-TA32	Adjust pin
13	KZ-2700PPH-TA13	Bolt	33	KZ-2700PPH-TA33	Driven gear
14	KZ-2700PPH-TA14	BOLT	34	KZ-2700PPH-TA34	Driving gear
15	KZ-2700PPH-TA15	Bearing	35	KZ-2700PPH-TA35	Gear cover
16	KZ-2700PPH-TA16	Right pinion	36	KZ-2700PPH-TA36	Connect ing pipe
17	KZ-2700PPH-TA17	Bearing	37	KZ-2700PPH-TA37	Lube pipe (out)
18	KZ-2700PPH-TA18	Gear case cover	38	KZ-2700PPH-TA38	Lube pipe (in)
19	KZ-2700PPH-TA19	Filter	39	KZ-2700PPH-TA39	ST
20	KZ-2700PPH-TA20	Screw			

# Drive shaft ass'y - B



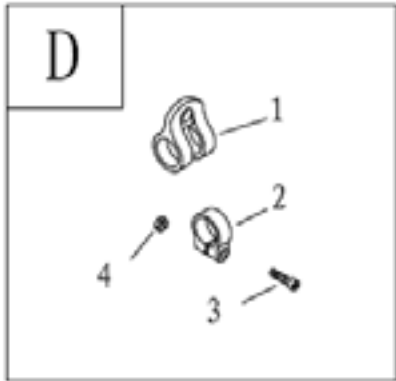
SL NO	PART NO	DESCRIPTION	SL NO	PART NO	DESCRIPTION
B	KZ-2700PPH-TB	DRIVE SHAFT ASSY			
1	KZ-2700PPH-TB01	Thin Pipe Ass' Y	13	KZ-2700PPH-TB13	Handle
1—1	KZ-2700PPH-TB1.1	Stop Collar	14	KZ-2700PPH-TB14	Front shaft ass' y
1—2	KZ-2700PPH-TB1.2	Thin Pipe	14.1	KZ-2700PPH-TB14.1	Front pipe
1—3	KZ-2700PPH-TB1.3	Hard Shaft SuPPHort	14.2	KZ-2700PPH-TB14.2	Front shaft Support
2	KZ-2700PPH-TB02	Hard Shaft	14.3	KZ-2700PPH-TB14.3	Front shaft
3	KZ-2700PPH-TB03	Bolt	14.4	KZ-2700PPH-TB14.4	Stop ring
4	KZ-2700PPH-TB04	Adaptor Sleeve	14.5	KZ-2700PPH-TB14.5	Washer
5	KZ-2700PPH-TB05	Stop Ring	14.6	KZ-2700PPH-TB14.6	Rivet
6	KZ-2700PPH-TB06	Bearing	14.7	KZ-2700PPH-TB14.7	Bearing ass' y
7	KZ-2700PPH-TB07	Back Shaft Ass' Y	15	KZ-2700PPH-TB15	P1astic joint
8	KZ-2700PPH-TB08	Damping Shaft Ass' Y	16	KZ-2700PPH-TB16	Hard drive joint
8.1	KZ-2700PPH-TB8.1	Bearing Ass' Y	17	KZ-2700PPH-TB17	Washer
8.2	KZ-2700PPH-TB8.2	Stop ring	18	KZ-2700PPH-TB18	Rivet
8.3	KZ-2700PPH-TB8.3	Damping shaft			
9	KZ-2700PPH-TB09	Thick pipe ass' y			
9.1	KZ-2700PPH-TB9.1	Rubber cover			
9.2	KZ-2700PPH-TB9.2	Thick pipe			
9.3	KZ-2700PPH-TB9.3	Back shaft suPPHort			
10	KZ-2700PPH-TB10	Connection Sleeve			
11	KZ-2700PPH-TB11	Screw			
12	KZ-2700PPH-TB12	Screw			

## Level Ass'y -C



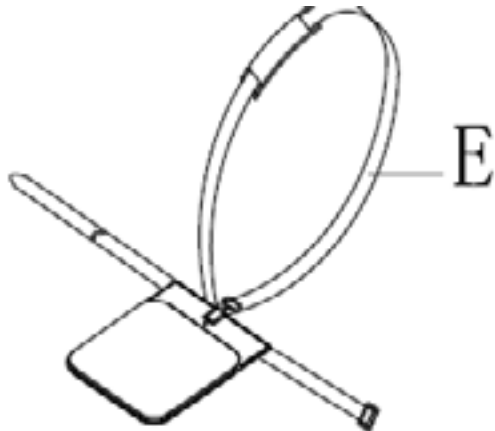
SL NO	PART NO	DESCRIPTION
C	KZ-2700PPH-TC	LEVEL ASSY
1	KZ-2700PPH-TC01	Clamp
2	KZ-2700PPH-TC02	Screw
3	KZ-2700PPH-TC03	Tine
4	KZ-2700PPH-TC04	Spring
6	KZ-2700PPH-TC05	Spring
7	KZ-2700PPH-TC06	Safety Lever
8	KZ-2700PPH-TC07	Throttle Lever
S	KZ-2700PPH-TC08	Cable Comp.
10	KZ-2700PPH-TC09	Screw
11	KZ-2700PPH-TC10	Screw
12	KZ-2700PPH-TC11	Box, Left
13	KZ-2700PPH-TC12	Stop Switch
14	KZ-2700PPH-TC13	Tube
15	KZ-2700PPH-TC14	Screw
16	KZ-2700PPH-TC15	Clamp
17	KZ-2700PPH-TC16	Rubber Cover
18	KZ-2700PPH-TC17	Box Right
19	KZ-2700PPH-TC18	Nut

## Holder Ass' y -D



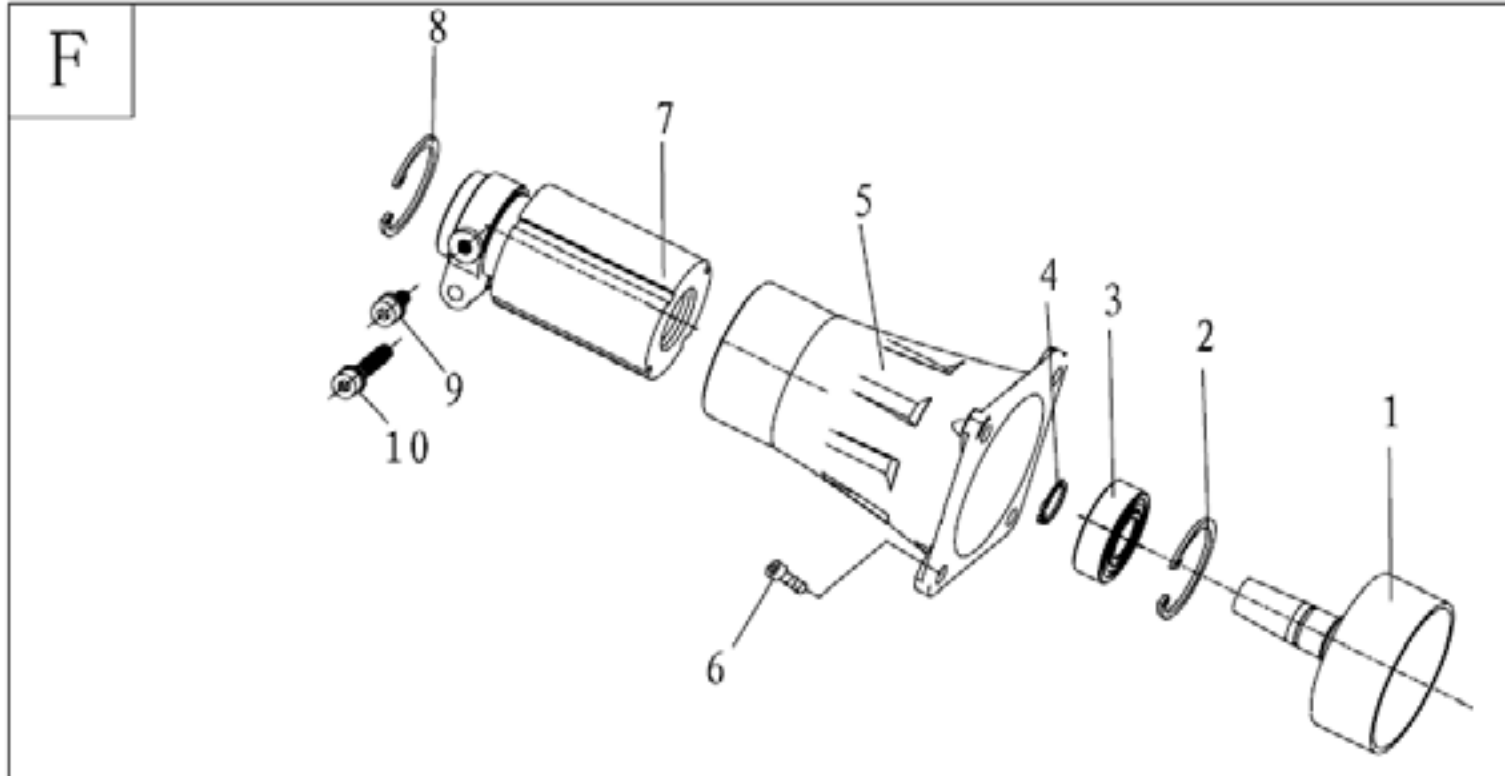
SL NO	PART NO	DESCRIPTION
D	KZ-2700PPH-TD	HOLDER ASSY
1	KZ-2700PPH-TD01	Harness Clamp
2	KZ-2700PPH-TD02	Clamp
3	KZ-2700PPH-TD03	Screw
4	KZ-2700PPH-TD04	Nut

## Harness Assy - E



E	KZ-2700PPH-TE	Harness Ass' y
---	---------------	----------------

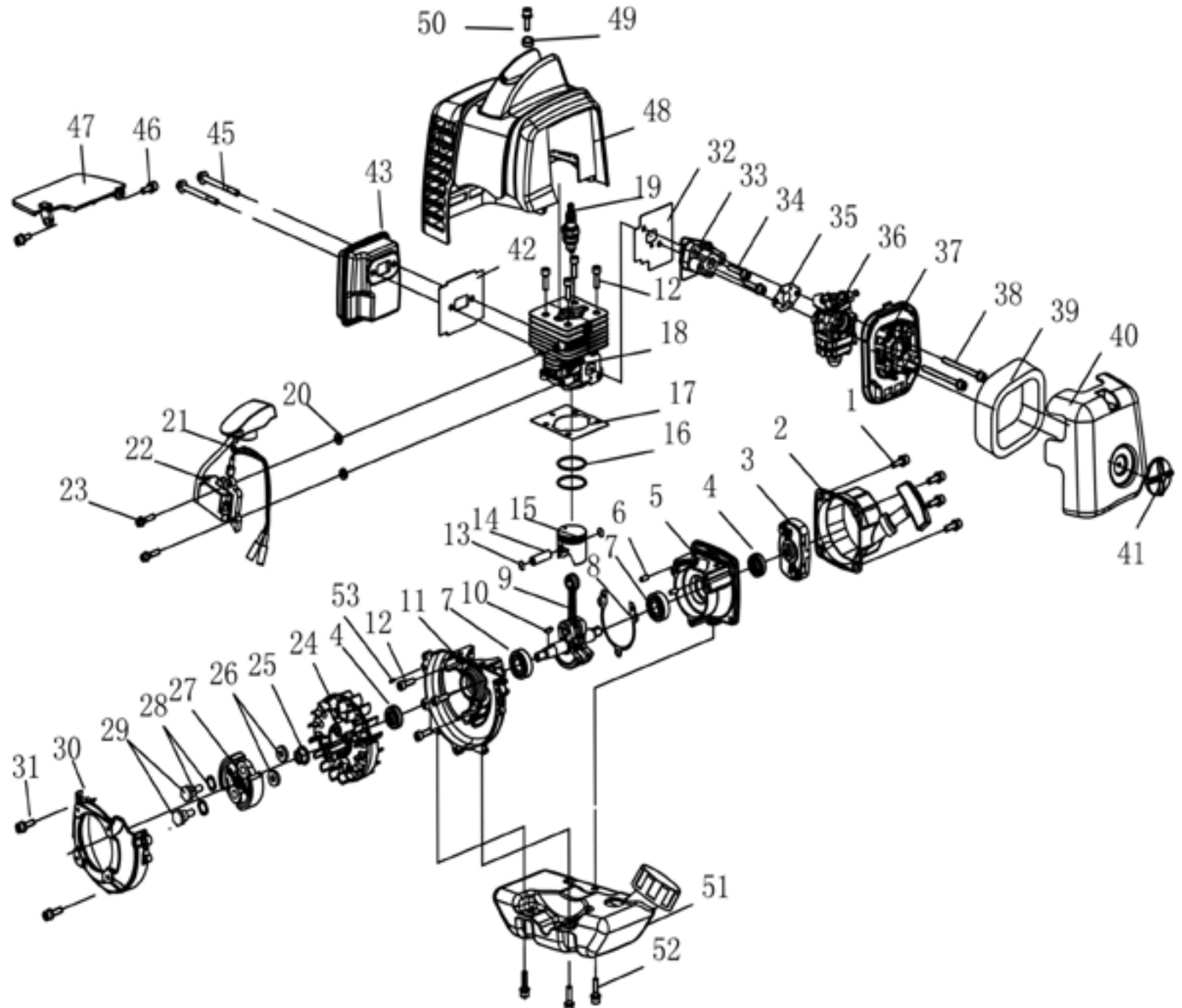
# Clutch Comp. -F



SL NO	PART NO	DESCRIPTION	SL NO	PART NO	DESCRIPTION
F	KZ-2700PPH-TF	CLUTCH COMP.			
1	KZ-2700PPH-TF01	Clutch Drum Coup.	6	KZ-2700PPH-TF06	Bolt
2	KZ-2700PPH-TF02	Stop Ring	7	KZ-2700PPH-TF07	Linker
3	KZ-2700PPH-TF03	Bearing	8	KZ-2700PPH-TF08	Stop Ring
4	KZ-2700PPH-TF04	Stop Ring	9	KZ-2700PPH-TF09	Screw
5	KZ-2700PPH-TF05	Clutch Case	10	KZ-2700PPH-TF10	Bolt



# ENGINE DIAGRAM & PART LIST OF KZ-2700-PP-POLEPRUNER








SL NO	PART NO	DESCRIPTION	SL NO	PART NO	DESCRIPTION
1	KZ-2700PPH-EN01	Screw	17	KZ-2700PPH-EN17	Gasket cylinder
2	KZ-2700PPH-EN02	Starter	18	KZ-2700PPH-EN18	Cylinder
3	KZ-2700PPH-EN03	Guide Cover Ass'y	19	KZ-2700PPH-EN19	Spark plug
4	KZ-2700PPH-EN04	Oil seal	20	KZ-2700PPH-EN20	Spacer Ig coil
5	KZ-2700PPH-EN05	Crank case R	21	KZ-2700PPH-EN21	Wire lead assy
6	KZ-2700PPH-EN06	Pin	22	KZ-2700PPH-EN22	IG coil
7	KZ-2700PPH-EN07	Bearing	23	KZ-2700PPH-EN23	Screw
8	KZ-2700PPH-EN08	Gasket crank case	24	KZ-2700PPH-EN24	Rotor magnet
9	KZ-2700PPH-EN09	Crank shaft assy	25	KZ-2700PPH-EN25	Nut
10	KZ-2700PPH-EN10	Key	26	KZ-2700PPH-EN26	Wave washer
11	KZ-2700PPH-EN11	Crank case F	27	KZ-2700PPH-EN27	Clutch assy
12	KZ-2700PPH-EN12	Screw	28	KZ-2700PPH-EN28	Washer
13	KZ-2700PPH-EN13	Ring snap	29	KZ-2700PPH-EN29	Clutch bolt
14	KZ-2700PPH-EN14	Piston pin	30	KZ-2700PPH-EN30	Fan Cover
15	KZ-2700PPH-EN15	Piston	31	KZ-2700PPH-EN31	Screw
16	KZ-2700PPH-EN16	Ring piston	32	KZ-2700PPH-EN32	Gasket insulator

SL NO	PART NO	DESCRIPTION	SL NO	PART NO	DESCRIPTION
33	KZ-2700PPH-EN33	Insulator	49	KZ-2700PPH-EN49	Spacer IG coil
34	KZ-2700PPH-EN34	Screw	50	KZ-2700PPH-EN50	Screw
35	KZ-2700PPH-EN35	Gasket carburetor	51	KZ-2700PPH-EN51	Fuel tank
36	KZ-2700PPH-EN36	Carburetor	52	KZ-2700PPH-EN52	Screw
37	KZ-2700PPH-EN37	Cleaner base assy	53	KZ-2700PPH-EN53	Pin
38	KZ-2700PPH-EN38	Screw			
39	KZ-2700PPH-EN39	Air filter element			
40	KZ-2700PPH-EN40	Cover Cleaner			
41	KZ-2700PPH-EN41	Knob cover			
42	KZ-2700PPH-EN42	Gasket muffler			
43	KZ-2700PPH-EN43	Muffler			
44	KZ-2700PPH-EN44	NA			
45	KZ-2700PPH-EN45	Screw			
46	KZ-2700PPH-EN46	Screw			
47	KZ-2700PPH-EN47	Clapboard			
48	KZ-2700PPH-EN48	Top cover			






# WARRANTY CARD

## CUSTOMER COPY

DATE _____	DATE OF DELIVERY _____	DEALERS OFFICIAL SEAL	DEALERS SIGN _____
PURCHASERS NAME & ADDRESS _____ _____	 CUSTOMER SIGN		
PRODUCT NAME	PRODUCT SERIAL NO.	INVOICE/DN NO.	
			






I/Will accept the terms and conditions of warranty as in the warranty card

## DEALERS COPY

DATE _____	DATE OF DELIVERY _____	DEALERS OFFICIAL SEAL	DEALERS SIGN _____
PURCHASERS NAME & ADDRESS _____ _____	 CUSTOMER SIGN		
PRODUCT NAME	PRODUCT SERIAL NO.	INVOICE/DN NO.	
			

I/Will accept the terms and conditions of warranty as in the warranty card

## COMPANY COPY

DATE _____	DATE OF DELIVERY _____	DEALERS OFFICIAL SEAL	DEALERS SIGN _____
PURCHASERS NAME & ADDRESS _____ _____	 CUSTOMER SIGN		
PRODUCT NAME	PRODUCT SERIAL NO.	INVOICE/DN NO.	
			

I/Will accept the terms and conditions of warranty as in the warranty card

1. LIMITED WARRANTY PERIOD : For a period of six months from the date of Sale / delivery of the product which ever is earlier. 2. LIMITED WARRANTY OBLIGATION : Replacement of defective part(s) by authorized dealer are free of charges. If found defective by reasons of defective material / poor workmanship, parts will be replaced and there will be no value re-imburement. 3. TERMS & CONDITIONS : a. Claims under warranty will be accepted on submission of Warranty Card duly filled and stamped by authorized dealer together with the original purchase document. : b. Shipping / transportation / Incidental charges incurred in replacing defective parts under warranty shall be borne by the purchaser

WARRANTY null & void if

- (i) Lack of maintenance, (ii) Incorrect use of the machine or tampering, (iii) Use of non-genuine spare parts, (iv) Usage of acids, solvents, or any flammable materials, (v) Non-usage of filter water / clear water / soft water & using water above 40°C temperature, (vi) While using the pressure washers to draw water which is contaminated with dust & solvents (eg. paint thinners, gasoline, oil, etc.), (vii) Repair done by unauthorized service people, (viii) Those parts subject to wear & tear due to normal operations and plastic parts, rubber items etc, (ix) Loose connections, faulty electrical fixtures & fluctuations in power supply.
- 4. Should any failure occur during or after the warranty period, customer does not have the right to interrupt payment / price discount.
- 5. Incidental or consequential damages like inconvenience commercial loss, loss of tie, mental agony etc.
- 6. Loss of any nature due to operation or non-operation is not covered under warranty.
- 7. All free service are at Dealer's service point only.
- 8. Warranty ceases if service is not done periodically.
- 9. The attached card should be completed and returned to Ratnagiri Impex Pvt. Ltd. for registration immediately after sale / delivery.
- 10. The warranty is void unless you register the warranty card with Ratnagiri Impex Pvt. Ltd.
- 11. The decision of Ratnagiri Impex Pvt. Ltd., in settling the warranty is final in all respects.
- 12. All disputes are subject to Bangalore Courts Jurisdiction

1. LIMITED WARRANTY PERIOD : For a period of six months from the date of Sale / delivery of the product which ever is earlier. 2. LIMITED WARRANTY OBLIGATION : Replacement of defective part(s) by authorized dealer are free of charges. If found defective by reasons of defective material / poor workmanship, parts will be replaced and there will be no value re-imburement. 3. TERMS & CONDITIONS : a. Claims under warranty will be accepted on submission of Warranty Card duly filled and stamped by authorized dealer together with the original purchase document. : b. Shipping / transportation / Incidental charges incurred in replacing defective parts under warranty shall be borne by the purchaser.

WARRANTY null & void if

- (i) Lack of maintenance, (ii) Incorrect use of the machine or tampering, (iii) Use of non-genuine spare parts, (iv) Usage of acids, solvents, or any flammable materials, (v) Non-usage of filter water / clear water / soft water & using water above 40°C temperature, (vi) While using the pressure washers to draw water which is contaminated with dust & solvents (eg. paint thinners, gasoline, oil, etc.), (vii) Repair done by unauthorized service people, (viii) Those parts subject to wear & tear due to normal operations and plastic parts, rubber items etc, (ix) Loose connections, faulty electrical fixtures & fluctuations in power supply.
- 4. Should any failure occur during or after the warranty period, customer does not have the right to interrupt payment / price discount.
- 5. Incidental or consequential damages like inconvenience commercial loss, loss of tie, mental agony etc.
- 6. Loss of any nature due to operation or non-operation is not covered under warranty.
- 7. All free service are at Dealer's service point only.
- 8. Warranty ceases if service is not done periodically.
- 9. The attached card should be completed and returned to Ratnagiri Impex Pvt. Ltd. for registration immediately after sale / delivery.
- 10. The warranty is void unless you register the warranty card with Ratnagiri Impex Pvt. Ltd.
- 11. The decision of Ratnagiri Impex Pvt. Ltd., in settling the warranty is final in all respects.
- 12. All disputes are subject to Bangalore Courts Jurisdiction

1. LIMITED WARRANTY PERIOD : For a period of six months from the date of Sale / delivery of the product which ever is earlier. 2. LIMITED WARRANTY OBLIGATION : Replacement of defective part(s) by authorized dealer are free of charges. If found defective by reasons of defective material / poor workmanship, parts will be replaced and there will be no value re-imburement. 3. TERMS & CONDITIONS : a. Claims under warranty will be accepted on submission of Warranty Card duly filled and stamped by authorized dealer together with the original purchase document. : b. Shipping / transportation / Incidental charges incurred in replacing defective parts under warranty shall be borne by the purchaser.

WARRANTY null & void if

- (i) Lack of maintenance, (ii) Incorrect use of the machine or tampering, (iii) Use of non-genuine spare parts, (iv) Usage of acids, solvents, or any flammable materials, (v) Non-usage of filter water / clear water / soft water & using water above 40°C temperature, (vi) While using the pressure washers to draw water which is contaminated with dust & solvents (eg. paint thinners, gasoline, oil, etc.), (vii) Repair done by unauthorized service people, (viii) Those parts subject to wear & tear due to normal operations and plastic parts, rubber items etc, (ix) Loose connections, faulty electrical fixtures & fluctuations in power supply.
- 4. Should any failure occur during or after the warranty period, customer does not have the right to interrupt payment / price discount.
- 5. Incidental or consequential damages like inconvenience commercial loss, loss of tie, mental agony etc.
- 6. Loss of any nature due to operation or non-operation is not covered under warranty.
- 7. All free service are at Dealer's service point only.
- 8. Warranty ceases if service is not done periodically.
- 9. The attached card should be completed and returned to Ratnagiri Impex Pvt. Ltd. for registration immediately after sale / delivery.
- 10. The warranty is void unless you register the warranty card with Ratnagiri Impex Pvt. Ltd.
- 11. The decision of Ratnagiri Impex Pvt. Ltd., in settling the warranty is final in all respects.
- 12. All disputes are subject to Bangalore Courts Jurisdiction



**FREE SERVICE COUPON (30DAYS/30HRS. WHICHEVER IS EARLIER)**

MODEL

SERIAL NUMBER

PDI DATE

SERVICE NO.

PURCHASE BILL NO.

DATE

DEALERS OFFICE SEAL

- 1. Check and test the fuel mixture
- 3. Check , clean and adjust the spark plug
- 5. Check and sparken the cutting tools
- 7. Start and check the noise, vibration, loosen etc..

OPERATIONS

- 2. check and clean the air filter
- 4. Check and adjust the carburetor tuning
- 6. Product familirisation on usage
- 8. Routine maintenance and shortage.

**FREE SERVICE COUPON (30DAYS/30HRS. WHICHEVER IS EARLIER)**

MODEL

SERIAL NUMBER

PDI DATE

SERVICE NO.

PURCHASE BILL NO.

DATE

DEALERS OFFICE SEAL

- 1. Check and test the fuel mixture
- 3. Check , clean and adjust the spark plug
- 5. Check and sparken the cutting tools
- 7. Start and check the noise, vibration, loosen etc..

OPERATIONS

- 2. check and clean the air filter
- 4. Check and adjust the carburetor tuning
- 6. Product familirisation on usage
- 8. Routine maintenance and shortage.

**FREE SERVICE COUPON (30DAYS/30HRS. WHICHEVER IS EARLIER)**

MODEL

SERIAL NUMBER

PDI DATE

SERVICE NO.

PURCHASE BILL NO.

DATE

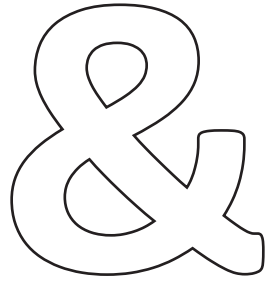
DEALERS OFFICE SEAL

- 1. Check and test the fuel mixture
- 3. Check , clean and adjust the spark plug
- 5. Check and sparken the cutting tools
- 7. Start and check the noise, vibration, loosen etc..

OPERATIONS

- 2. check and clean the air filter
- 4. Check and adjust the carburetor tuning
- 6. Product familirisation on usage
- 8. Routine maintenance and shortage.

# DOS



# DONT'S

1. Always read the instruction manual supplied along with the equipments and understand the correct installation and operating procedures before attempting to use the equipments.
2. It is important to use the personal protection equipments such as head helmet with visor, ear defenders, goggles, safety gloves, cut resistant shoes, trousers and jackets while operating potentially dangerous machines
3. Avoid untrained persons using the equipments. Children must not be allowed to handle these equipments
4. Always use genuine spares and accessories in repairs and usage to derive maximum life of the equipments.
5. Always keep the equipments in good working condition to minimize loss of output as well as to reduce the pollution and save the environment
6. Do not use the machine within range of persons unless they wear protective clothing
7. Do not operate the machine when fatigued or under the influence of alcohol or drugs
8. When the machine is running, please maintain a constant water supply. Without water circulation will damage the sealing rings of the machine.
9. For more query kindly contact for our Service Center/Dealer/ franchise

# KASEI POLE PRUNER



Marketed by:  
**ratnagiri  
impex**  
BRINGING YOU THE FUTURE... NOW

**RATNAGIRI IMPEX PVT., LTD.,**

Annapurna House, #1 / 1G, 7th Cross, New  
Guddadahalli

Mysore Road, Bangalore - 560 026

Missed Call : 7393 938 938

Email: [ask@agrimart.in](mailto:ask@agrimart.in)