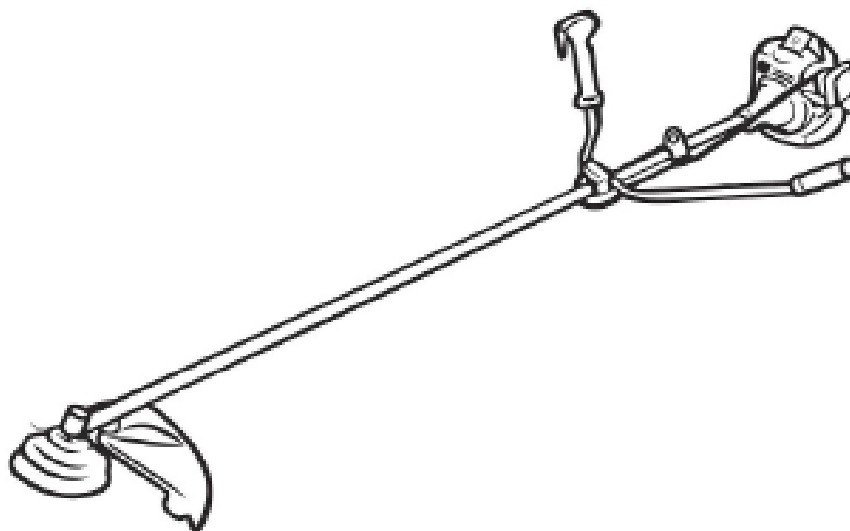


USER MANUAL



KASEI BRUSH CUTTER KZ-4000BC-PRO-2S

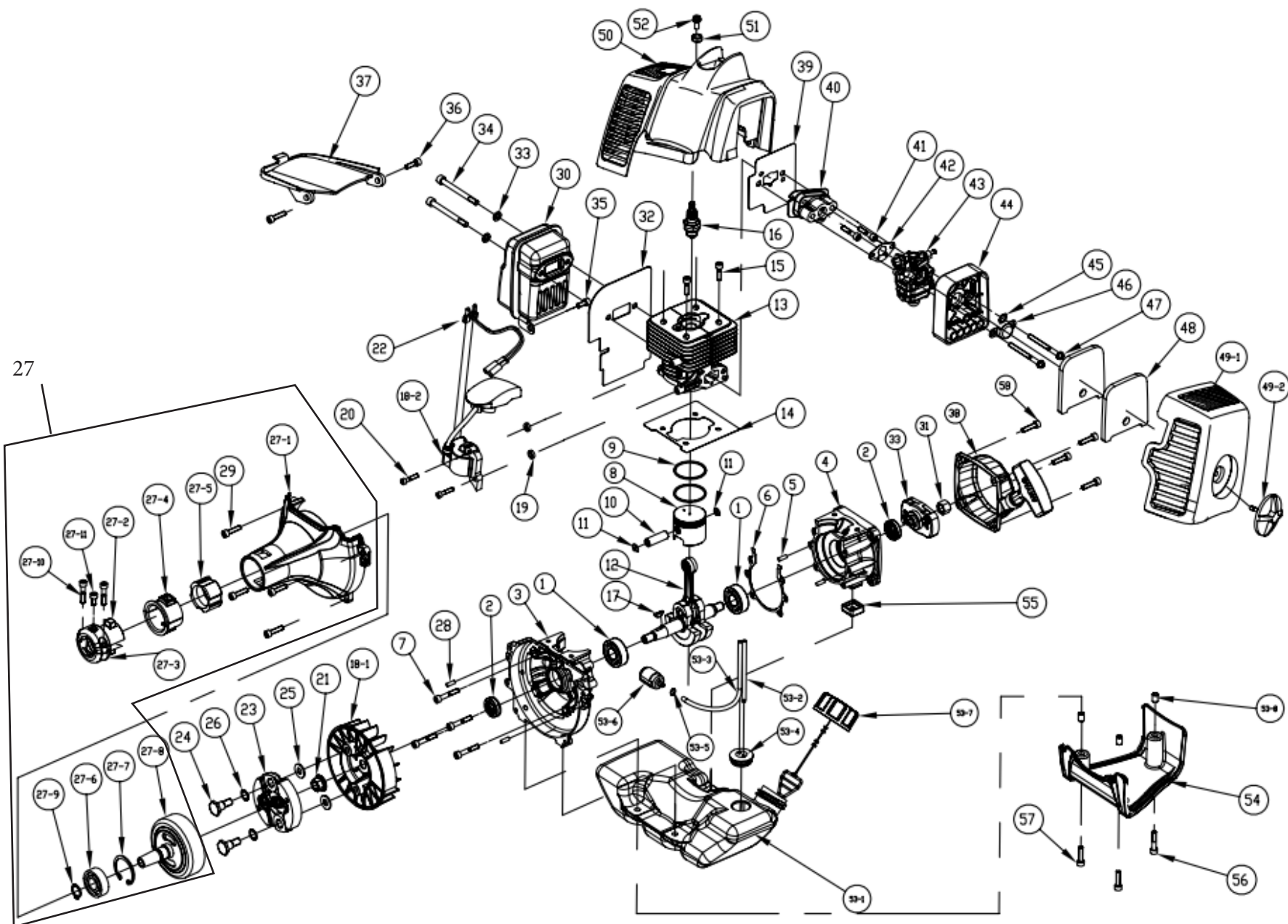


AN ISO 9001: 2015 CERTIFIES COMPANY

TECHNICAL SPECIFICATIONS

MODEL	KZ-4000BC-PRO-2S
TYPE	2STROKE
METHOD OF STARTING	RECOIL START
DISPLACEMENT	40CC
POWER	7500RPM
FUEL TANK CAPACITY	0.7LTR
WEIGHT	3.1KG

ENGINE DIAGRAM OF KZ-4000BC-PRO-2S - BRUSH CUTTER

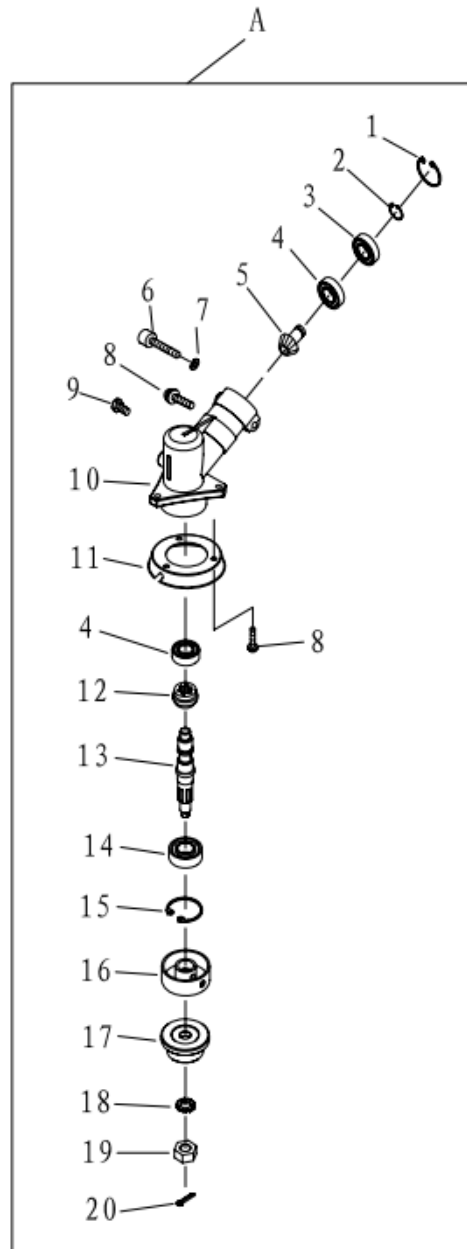


SL NO.	PART NO.	DESCRIPTION	SL NO.	PART NO.	DESCRIPTION
1	KZ-4000BC-E01	Bearing	20	KZ-4000BC-E20	Screw
2	KZ-4000BC-E02	Oil Seal	21	KZ-4000BC-E21	Nut
3	KZ-4000BC-E03	Crankcase	22	KZ-4000BC-E22	Wire Lead Assy
4	KZ-4000BC-E04	Crankcase	23	KZ-4000BC-E23	Clutch Assy
5	KZ-4000BC-E05	Pin	24	KZ-4000BC-E24	Clutch bolt
6	KZ-4000BC-E06	Gasket crankcase	25	KZ-4000BC-E25	Clutch Washer
7	KZ-4000BC-E07	Screw	26	KZ-4000BC-E26	Wave Washer
8	KZ-4000BC-E08	Piston	27	KZ-4000BC-E27	Fan Cover Assy
9	KZ-4000BC-E09	Ring piston	27.1	KZ-4000BC-E27.1	Fan Cover
10	KZ-4000BC-E10	Pin Piston	27.2	KZ-4000BC-E27.2	Semi-circular Clamp Plate A
11	KZ-4000BC-E11	Ring snap	27.3	KZ-4000BC-E27.3	Semi-circular Clamp Plate B
12	KZ-4000BC-E12	Crankshaft Assy	27.4	KZ-4000BC-E27.4	Damping Sleeve A
13	KZ-4000BC-E13	Cylinder	27.5	KZ-4000BC-E27.5	Damping Sleeve B
14	KZ-4000BC-E14	Gasket Cyliner	27.6	KZ-4000BC-E27.6	Bearing
15	KZ-4000BC-E15	Screw	27.7	KZ-4000BC-E27.7	Ring
16	KZ-4000BC-E16	Spark Plug	27.8	KZ-4000BC-E27.8	Clutch Bell
17	KZ-4000BC-E17	Key	27.9	KZ-4000BC-E27.9	Block up Ring
18.1	KZ-4000BC-E18.1	Rotor Magnet	27.1	KZ-4000BC-E27.10	Screw
18.2	KZ-4000BC-E18.2	IG coil	27.11	KZ-4000BC-E27.11	Screw
19	KZ-4000BC-E19	Spacer IG coil	28	KZ-4000BC-E28	Pin

SL NO.	PART NO.	DESCRIPTION	SL NO.	PART NO.	DESCRIPTION
29	KZ-4000BC-E29	Screw	48	KZ-4000BC-E48	Air filter element
30	KZ-4000BC-E30	Muffler Assy	49.1	KZ-4000BC-E49.1	Cover cleaner
31	KZ-4000BC-E31	Nut	49.2	KZ-4000BC-E49.2	Knob cover
32	KZ-4000BC-E32	Gasket Muffler	50	KZ-4000BC-E50	Top cover
33	KZ-4000BC-E33	Guide Cover Assy	51	KZ-4000BC-E51	Gasket
34	KZ-4000BC-E34	Screw	52	KZ-4000BC-E52	Screw
35	KZ-4000BC-E35	Screw	53.1	KZ-4000BC-E53.1	Fuel Tank
36	KZ-4000BC-E36	Screw	53.2	KZ-4000BC-E53.2	Pipe Return
37	KZ-4000BC-E37	Clapboard	53.3	KZ-4000BC-E53.3	Pipe Intake
38	KZ-4000BC-E38	Starter	53.4	KZ-4000BC-E53.4	Grommet
39	KZ-4000BC-E39	Gaket insulator	53.5	KZ-4000BC-E53.5	Clip Pipe
40	KZ-4000BC-E40	Insulator	53.6	KZ-4000BC-E53.6	Filter Assy
41	KZ-4000BC-E41	Screw	53.7	KZ-4000BC-E53.7	Tank Cap Assy
42	KZ-4000BC-E42	Gasket carburetor	53.8	KZ-4000BC-E53.8	Collar C
43	KZ-4000BC-E43	Carburetor	54	KZ-4000BC-E54	Engine Stand
44	KZ-4000BC-E44	Cleaner body	55	KZ-4000BC-E55	Spacer Fuel Tank
45	KZ-4000BC-E45	Wave washer	56	KZ-4000BC-E56	Screw
46	KZ-4000BC-E46	Spit back shield	57	KZ-4000BC-E57	Screw
47	KZ-4000BC-E47	Screw	58	KZ-4000BC-E58	Screw

TRANSMISSION DIAGRAM OF KZ-4000BC-PRO-2S - BRUSH CUTTER

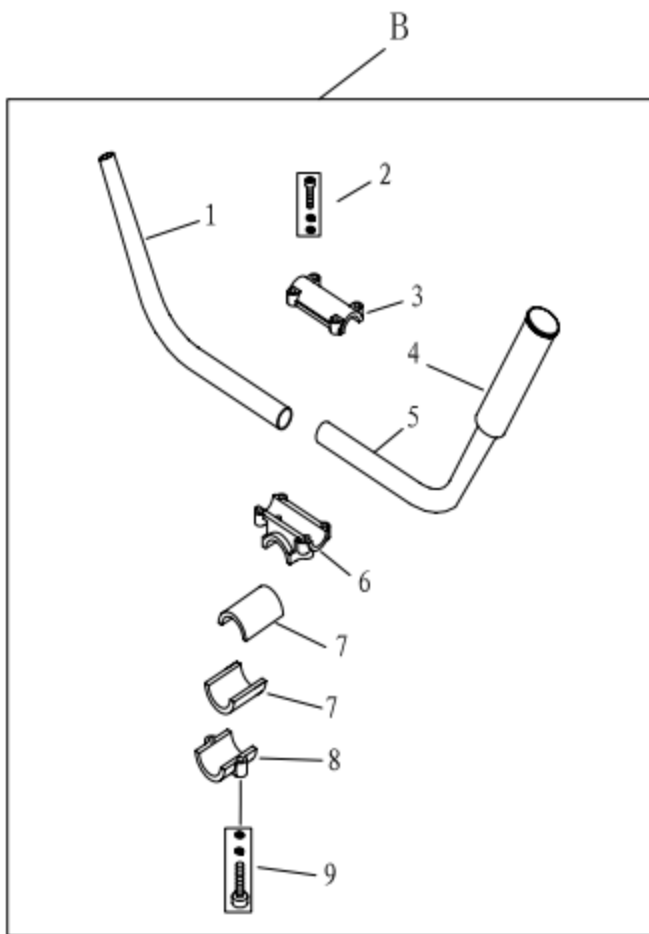
GEAR CASE ASSY - A



SL NO.	PART NO	DESCRIPTION
A	KZ-4000BC-A	Gear Case Ass'y
1	KZ-4000BC-TA01	Stop Ring
2	KZ-4000BC-TA02	Stop Ring
3	KZ-4000BC-TA03	Bearing
4	KZ-4000BC-TA04	Bearing
5	KZ-4000BC-TA05	Pinion
6	KZ-4000BC-TA06	Screw
7	KZ-4000BC-TA07	Washer
8	KZ-4000BC-TA08	Screw
9	KZ-4000BC-TA09	Bolt
10	KZ-4000BC-TA10	Clear Case
11	KZ-4000BC-TA11	Safety Guard
12	KZ-4000BC-TA12	Swear
13	KZ-4000BC-TA13	Swear Shaft
14	KZ-4000BC-TA14	Bearing
15	KZ-4000BC-TA15	Stop Ring
16	KZ-4000BC-TA16	Holder A
17	KZ-4000BC-TA17	Holder B
18	KZ-4000BC-TA18	Washer
19	KZ-4000BC-TA19	Left Nut
20	KZ-4000BC-TA20	Pin

TRANSMISSION DIAGRAM OF KZ-4000BC-PRO-2S - BRUSH CUTTER

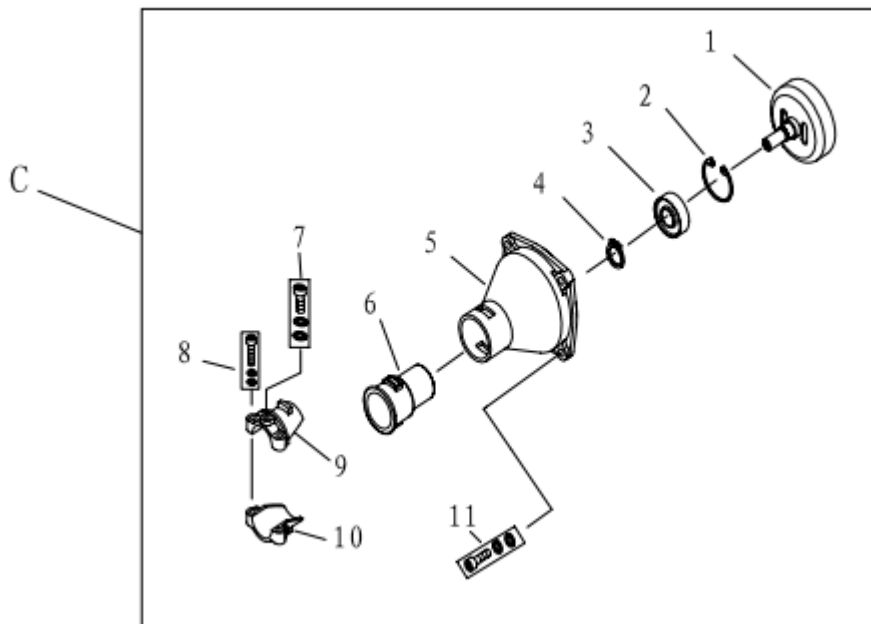
HANDLE ASSY - B



SL NO.	PART NO	DESCRIPTION
1	KZ-4000BC-TB01	Handle
2	KZ-4000BC-TB02	Bolt
3	KZ-4000BC-TB03	Cap, Upper
4	KZ-4000BC-TB04	Grip Left
5	KZ-4000BC-TB05	Handle
6	KZ-4000BC-TB06	Bracket
7	KZ-4000BC-TB07	Rubber Washer
8	KZ-4000BC-TB08	Cap Lower
9	KZ-4000BC-TB09	Screw

TRANSMISSION DIAGRAM OF KZ-4000BC-PRO-2S - BRUSH CUTTER

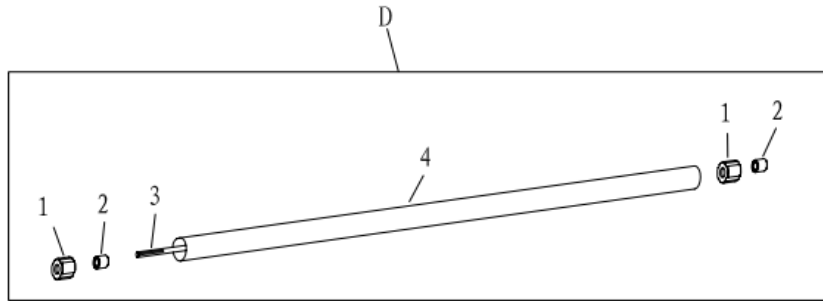
CLUTCH DRUM COMPONENT - C



SL NO.	PART NO	DESCRIPTION
1	KZ-4000BC-TC01	Clutch Drum Comp.
2	KZ-4000BC-TC02	Stop Ring
3	KZ-4000BC-TC03	Bearing
4	KZ-4000BC-TC04	Stop Ring
5	KZ-4000BC-TC05	Linker
6	KZ-4000BC-TC06	Rubber Cover
7	KZ-4000BC-TC07	Screw
8	KZ-4000BC-TC08	Screw
9	KZ-4000BC-TC09	ClKZp A
10	KZ-4000BC-TC10	ClKZp B
11	KZ-4000BC-TC11	Screw

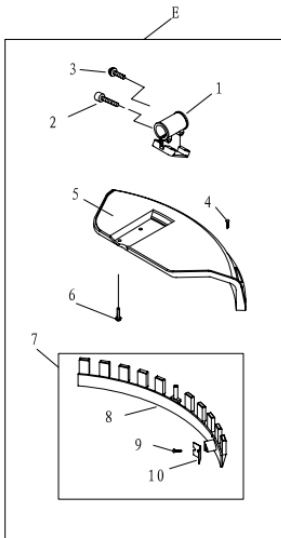
TRANSMISSION DIAGRAM OF KZ-4000BC-PRO-2S - BRUSH CUTTER

SHAFT COMPONENT - D



SL NO.	PART NO	DESCRIPTION
1	KZ-4000BC-TD01	Rubber Cover
2	KZ-4000BC-TD02	oil Bearing
3	KZ-4000BC-TD03	Drive Shaft
4	KZ-4000BC-TD04	Pipe

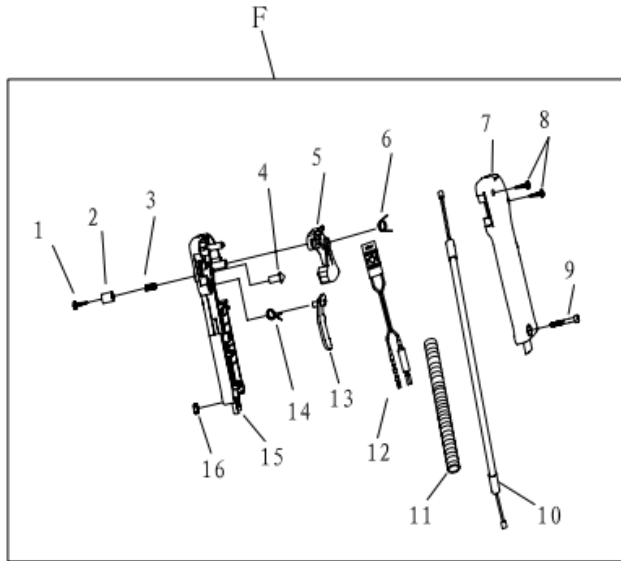
GUARD ASSY - E



SL NO.	PART NO	DESCRIPTION
1	KZ-4000BC-TE01	Bracket
2	KZ-4000BC-TE02	Screw
3	KZ-4000BC-TE03	Screw
4	KZ-4000BC-TE04	Screw
5	KZ-4000BC-TE05	Safety Guard
6	KZ-4000BC-TE06	screw
7	KZ-4000BC-TE07	Guard Assy
8	KZ-4000BC-TE08	Guard
9	KZ-4000BC-TE09	Screw
10	KZ-4000BC-TE10	Blade

TRANSMISSION DIAGRAM OF KZ-4000BC-PRO-2S - BRUSH CUTTER

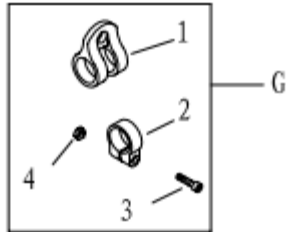
LEVER ASSY - F



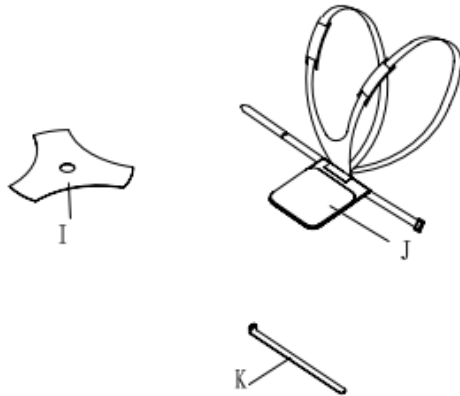
SL NO.	PART NO	DESCRIPTION
1	KZ-4000BC-TF01	Screw
2	KZ-4000BC-TF02	Button
3	KZ-4000BC-TF03	spring
4	KZ-4000BC-TF04	Lock pin
5	KZ-4000BC-TF05	Hand grip
6	KZ-4000BC-TF06	Spring
7	KZ-4000BC-TF07	Box right
8	KZ-4000BC-TF08	Screw
9	KZ-4000BC-TF09	Screw
10	KZ-4000BC-TF10	Cable Comp
11	KZ-4000BC-TF11	Tube
12	KZ-4000BC-TF12	Stop Button comp
13	KZ-4000BC-TF13	Hand Grip
14	KZ-4000BC-TF14	Spring
15	KZ-4000BC-TF15	Box, Left
16	KZ-4000BC-TF16	Nut

TRANSMISSION DIAGRAM OF KZ-4000BC-PRO-2S - BRUSH CUTTER

HOLDER ASSY - G



SL NO.	PART NO	DESCRIPTION
1	KZ-4000BC-TG01	Harness Clmp
2	KZ-4000BC-TG02	CLKZp
3	KZ-4000BC-TG03	Screw
4	KZ-4000BC-TG04	Nut



SL NO.	PART NO	DESCRIPTION
I	KZ-4000BC-TI04	Blade
J	KZ-4000BC-TJ04	Harness Ass'y
K	KZ-4000BC-TK04	fire CLKZp Band

WARRANTY CARD

CUSTOMER COPY

DATE _____	DATE OF DELIVERY _____	DEALERS OFFICIAL SEAL _____	DEALERS SIGN _____
PURCHASERS NAME & ADDRESS _____ _____ _____	<div>CUSTOMER SIGN</div>	<div></div>	
PRODUCT NAME	PRODUCT SERIAL NO.	INVOICE/DN NO.	
<div></div>	<div></div>	<div></div>	
I/Will accept the terms and conditions of warranty as in the warranty card			

DEALERS COPY

DATE _____	DATE OF DELIVERY _____	DEALERS OFFICIAL SEAL _____	DEALERS SIGN _____
PURCHASERS NAME & ADDRESS _____ _____ _____	<div>CUSTOMER SIGN</div>	<div></div>	
PRODUCT NAME	PRODUCT SERIAL NO.	INVOICE/DN NO.	
<div></div>	<div></div>	<div></div>	
I/Will accept the terms and conditions of warranty as in the warranty card			

COMPANY COPY

DATE _____	DATE OF DELIVERY _____	DEALERS OFFICIAL SEAL _____	DEALERS SIGN _____
PURCHASERS NAME & ADDRESS _____ _____ _____	<div>CUSTOMER SIGN</div>	<div></div>	
PRODUCT NAME	PRODUCT SERIAL NO.	INVOICE/DN NO.	
<div></div>	<div></div>	<div></div>	
I/Will accept the terms and conditions of warranty as in the warranty card			

1. LIMITED WARRANTY PERIOD : For a period of six months from the date of Sale / delivery of the product which ever is earlier. 2. LIMITED WARRANTY OBLIGATION : Replacement of defective part(s) by authorized dealer are free of charges. If found defective by reasons of defective material / poor workmanship, parts will be replaced and there will be no value re-imbursement. 3. TERMS & CONDITIONS : a. Claims under warranty will be accepted on submission of Warranty Card duly filled and stamped by authorized dealer together with the original purchase document. : b. Shipping / transportation / Incidental charges incurred in replacing defective parts under warranty shall be borne by the purchaser

WARRANTY null & void if
(i) Lack of maintenance, (ii) Incorrect use of the machine or tampering, (iii) Use of non-genuine spare parts, (iv) Usage of acids, solvents, or any flammable materials, (v) Non-usage of filter water / clear water / soft water & using water above 40°C temperature, (vi) While using the pressure washers to draw water which is contaminated with dust & solvents (eg. paint thinners, gasoline, oil, etc.), (vii) Repair done by unauthorized service people, (viii) Those parts subject to wear & tear due to normal operations and plastic parts, rubber items etc, (ix) Loose connections, faulty electrical fixtures & fluctuations in power supply.
4. Should any failure occur during or after the warranty period, customer does not have the right to interrupt payment / price discount.
5. Incidental or consequential damages like inconvenience commercial loss, loss of tie, mental agony etc.
6. Loss of any nature due to operation or non-operation is not covered under warranty.
7. All free service are at Dealer's service point only.
8. Warranty ceases if service is not done periodically.
9. The attached card should be completed and returned to Ratnagiri Impex Pvt. Ltd. for registration immediately after sale / delivery.
10. The warranty is void unless you register the warranty card with Ratnagiri Impex Pvt. Ltd.
11. The decision of Ratnagiri Impex Pvt. Ltd., in settling the warranty is final in all respects.
12. All disputes are subject to Bangalore Courts Jurisdiction

1. LIMITED WARRANTY PERIOD : For a period of six months from the date of Sale / delivery of the product which ever is earlier. 2. LIMITED WARRANTY OBLIGATION : Replacement of defective part(s) by authorized dealer are free of charges. If found defective by reasons of defective material / poor workmanship, parts will be replaced and there will be no value re-imbursement. 3. TERMS & CONDITIONS : a. Claims under warranty will be accepted on submission of Warranty Card duly filled and stamped by authorized dealer together with the original purchase document. : b. Shipping / transportation / Incidental charges incurred in replacing defective parts under warranty shall be borne by the purchaser.
WARRANTY null & void if
(i) Lack of maintenance, (ii) Incorrect use of the machine or tampering, (iii) Use of non-genuine spare parts, (iv) Usage of acids, solvents, or any flammable materials, (v) Non-usage of filter water / clear water / soft water & using water above 40°C temperature, (vi) While using the pressure washers to draw water which is contaminated with dust & solvents (eg. paint thinners, gasoline, oil, etc.), (vii) Repair done by unauthorized service people, (viii) Those parts subject to wear & tear due to normal operations and plastic parts, rubber items etc, (ix) Loose connections, faulty electrical fixtures & fluctuations in power supply.
4. Should any failure occur during or after the warranty period, customer does not have the right to interrupt payment / price discount.
5. Incidental or consequential damages like inconvenience commercial loss, loss of tie, mental agony etc.
6. Loss of any nature due to operation or non-operation is not covered under warranty.
7. All free service are at Dealer's service point only.
8. Warranty ceases if service is not done periodically.
9. The attached card should be completed and returned to Ratnagiri Impex Pvt. Ltd. for registration immediately after sale / delivery.
10. The warranty is void unless you register the warranty card with Ratnagiri Impex Pvt. Ltd.
11. The decision of Ratnagiri Impex Pvt. Ltd., in settling the warranty is final in all respects.
12. All disputes are subject to Bangalore Courts Jurisdiction

1. LIMITED WARRANTY PERIOD : For a period of six months from the date of Sale / delivery of the product which ever is earlier. 2. LIMITED WARRANTY OBLIGATION : Replacement of defective part(s) by authorized dealer are free of charges. If found defective by reasons of defective material / poor workmanship, parts will be replaced and there will be no value re-imbursement. 3. TERMS & CONDITIONS : a. Claims under warranty will be accepted on submission of Warranty Card duly filled and stamped by authorized dealer together with the original purchase document. : b. Shipping / transportation / Incidental charges incurred in replacing defective parts under warranty shall be borne by the purchaser.
WARRANTY null & void if
(i) Lack of maintenance, (ii) Incorrect use of the machine or tampering, (iii) Use of non-genuine spare parts, (iv) Usage of acids, solvents, or any flammable materials, (v) Non-usage of filter water / clear water / soft water & using water above 40°C temperature, (vi) While using the pressure washers to draw water which is contaminated with dust & solvents (eg. paint thinners, gasoline, oil, etc.), (vii) Repair done by unauthorized service people, (viii) Those parts subject to wear & tear due to normal operations and plastic parts, rubber items etc, (ix) Loose connections, faulty electrical fixtures & fluctuations in power supply.
4. Should any failure occur during or after the warranty period, customer does not have the right to interrupt payment / price discount.
5. Incidental or consequential damages like inconvenience commercial loss, loss of tie, mental agony etc.
6. Loss of any nature due to operation or non-operation is not covered under warranty.
7. All free service are at Dealer's service point only.
8. Warranty ceases if service is not done periodically.
9. The attached card should be completed and returned to Ratnagiri Impex Pvt. Ltd. for registration immediately after sale / delivery.
10. The warranty is void unless you register the warranty card with Ratnagiri Impex Pvt. Ltd.
11. The decision of Ratnagiri Impex Pvt. Ltd., in settling the warranty is final in all respects.
12. All disputes are subject to Bangalore Courts Jurisdiction

FREE SERVICE COUPON (30DAYS/30HRS. WHICHEVER IS EARLIER)

MODEL	<input type="text"/>	SERIAL NUMBER	<input type="text"/>
PDI DATE	SERVICE NO.	PURCHASE BILL NO.	DATE
<input type="text"/>	<input type="text"/>	<input type="text"/>	<input type="text"/>
DEALERS OFFICE SEAL	OPERATIONS		
<input type="text"/>	<div> 1. Check and test the fuel mixture 3. Check , clean and adjust the spark plug 5. Check and sparken the cutting tools 7. Start and check the noise, vibration, loosen etc.. </div> <div> 2. check and clean the air filter 4. Check and adjust the carburetor tuning 6. Product familiarisation on usage 8. Routine maintenance and shortage. </div>		

FREE SERVICE COUPON (30DAYS/30HRS. WHICHEVER IS EARLIER)

MODEL	<input type="text"/>	SERIAL NUMBER	<input type="text"/>
PDI DATE	SERVICE NO.	PURCHASE BILL NO.	DATE
<input type="text"/>	<input type="text"/>	<input type="text"/>	<input type="text"/>
DEALERS OFFICE SEAL	OPERATIONS		
<input type="text"/>	<div> 1. Check and test the fuel mixture 3. Check , clean and adjust the spark plug 5. Check and sparken the cutting tools 7. Start and check the noise, vibration, loosen etc.. </div> <div> 2. check and clean the air filter 4. Check and adjust the carburetor tuning 6. Product familiarisation on usage 8. Routine maintenance and shortage. </div>		

FREE SERVICE COUPON (30DAYS/30HRS. WHICHEVER IS EARLIER)

MODEL	<input type="text"/>	SERIAL NUMBER	<input type="text"/>
PDI DATE	SERVICE NO.	PURCHASE BILL NO.	DATE
<input type="text"/>	<input type="text"/>	<input type="text"/>	<input type="text"/>
DEALERS OFFICE SEAL	OPERATIONS		
<input type="text"/>	<div> 1. Check and test the fuel mixture 3. Check , clean and adjust the spark plug 5. Check and sparken the cutting tools 7. Start and check the noise, vibration, loosen etc.. </div> <div> 2. check and clean the air filter 4. Check and adjust the carburetor tuning 6. Product familiarisation on usage 8. Routine maintenance and shortage. </div>		

DOS & DONTs

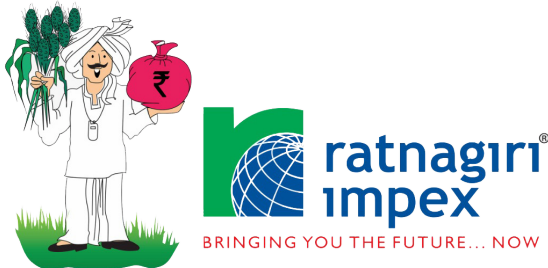
1. Always read the instruction manual supplied along with the equipments and understand the correct installation and operating procedures before attempting to use the equipments.
2. It is important to use the personal protection equipments such as head helmet with visor, ear defenders, goggles, safety gloves, cut resistant shoes, trousers and jackets while operating potentially dangerous machines
3. Avoid untrained persons using the equipments. Children must not be allowed to handle these equipments
4. Always use genuine spares and accessories in repairs and usage to derive maximum life of the equipments.
5. Always keep the equipments in good working condition to minimize loss of output as well as to reduce the pollution and save the environment
6. Do not use the machine within range of persons unless they wear protective clothing
7. Do not operate the machine when fatigued or under the influence of alcohol or drugs
8. When the machine is running, please maintain a constant water supply. Without water circulation will damage the sealing rings of the machine.
9. For more query kindly contact for our Service Center/Dealer/ franchise

KASEI

Advanced Technology

RANGE OF PRODUCTS

DESIGNED BY JAPANESE



IMPORTED & MARKETING BY,

RATNAGIRI IMPEX PVT., LTD.,

**Annapurna House, #1 / 1G, 7th Cross, New
Guddadahalli Mysore Road, Bangalore - 560 026
Missed Call : 7393 938 938 Email: ask@agrimart.in**